



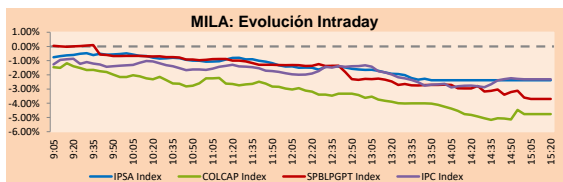
PULSO BURSÁTIL

Lima, March 11, 2020

MILA

Main Indexes	Close	1 D	5 D	1 M	YTD	Cap. Burs. (US\$ bill)
▼ IPISA (Chile)	3,979.67	-2.23%	-8.86%	-14.60%	-14.78%	98.43
▼ IGPA (Chile)	19,949.90	-2.17%	-8.52%	-14.58%	-14.72%	126.85
▼ COLSC (Colombia)	914.32	-2.75%	-7.79%	-8.88%	-6.52%	8.38
▼ COLCAP (Colombia)	1,295.46	-4.76%	-16.13%	-21.26%	-22.07%	74.53
▼ S&P/BVL (Perú)*	17,094.47	-3.70%	-9.25%	-14.35%	-16.72%	81.06
▼ S&P/BVL SEL (Perú)	450.22	-4.96%	-9.42%	-14.03%	-15.28%	64.58
▼ S&P/BVL LIMA 25	22,210.62	-2.93%	-8.43%	-14.01%	-13.76%	75.40
▼ IPC (México)	38,678.55	-2.24%	-10.89%	-14.10%	-11.17%	234.39
▲ S&P MILA 40	454.16	2.32%	-12.76%	-20.35%	-24.69%	190.37

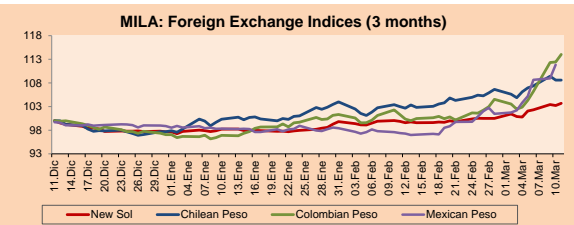
*Legend: Variation 1D: 1 day; 5D: 5 days; 1M: 1 Month; YTD: Var% 12/31/19 to date



Source: Bloomberg

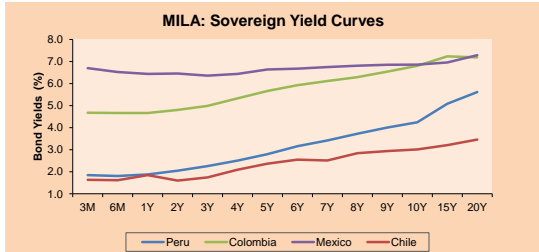
Currency	Price	1D*	5D*	30 D*	YTD*
▲ New Sol (PEN)	3,517.3	0.46%	2.87%	3.64%	6.19%
▲ Chilean Peso (CLP)	835.80	-0.01%	2.33%	5.02%	11.18%
▲ Colombian Peso (COP)	3,849.96	1.42%	10.83%	11.47%	17.45%
▲ Mexican Peso (MXN)	21.38	2.84%	9.45%	14.37%	12.98%

*Legend: Variation 1D: 1 day; 5D: 5 days; 1M: 1 Month; YTD: Var% 12/31/19 to date



Base: 11/12/19=100
Source: Bloomberg

Fixed Income	Bid Yield (%)	Ask Yield (%)	Duration
PERU 4.125 08/25/2027	USD 113.546	2.17	2.13 6.51
PERU 7.35 07/21/25	USD 127.187	1.99	1.96 4.57
PERU 8.75 11/21/33	USD 167.86	2.79	2.74 9.34
PERU 6.55 03/14/37	USD 149.297	2.87	2.87 11.06
PERU 5.625 11/18/2050	USD 151.373	3.05	3.03 17.93
CHILE 2.25 10/30/22	USD 100.971	1.90	1.84 2.53
CHILE 3.875 08/05/20	USD 100.971	1.57	1.22 0.40
CHILE 3.625 10/30/2042	USD 109.896	3.03	3.01 15.95
COLOM 11.75 02/25/20	USD 100.763	-28.56	-93.83 0.01
COLOM 11.85 03/09/28	USD 162.928	2.99	2.92 5.92
COLOM 10.375 01/28/33	USD 160.025	4.35	4.18 8.37
COLOM 7.375 09/18/37	USD 139.203	4.22	4.17 10.98
COLOM 6.125 01/18/41	USD 125.89	4.26	4.21 13.02
MEX 4 10/02/23	USD 104.683	2.61	2.61 3.27
MEX5.55 01/45	USD 120.565	4.218	4.197 14.77



Source: Bloomberg

Equity

Largest gains	Exchange	Amt.	Price	▲%	Largest losses	Exchange	Amt.	Price	▼%
CONCHATORO	Santia.	CLP	1255.00	2.44	PML	Lima	USD	0.1	-12.50
BOGOTA	Colomb.	COP	82000.00	2.35	GRUPOSURA	Lima	COP	24,220.00	-9.492
SECURITY	Santia.	CLP	167.92	1.38	BVN	Lima	USD	8.58	-9.21
CENCOSUD	Santia.	CLP	939.00	1.29	TELEFBC1	Lima	PEN	0.91	-8.081

Per Turnover

Exchange	Amount (US\$)	
SQM-B	Santia.	10,726,566
BAP	Lima	8375302
PFBCOLOM	Colomb.	8,233,124
ECOPETROL	Colomb.	7581408,638
BSANTANDER	Santia.	7,280,321

Per Volume

Exchange	Volume	
BSANTANDER	Santia.	173,292,912
CHILE	Santia.	69777282
ORO BLANCO	Santia.	61,651,990
COLBUN	Santia.	28934893
VAPORES	Santia.	25,733,887

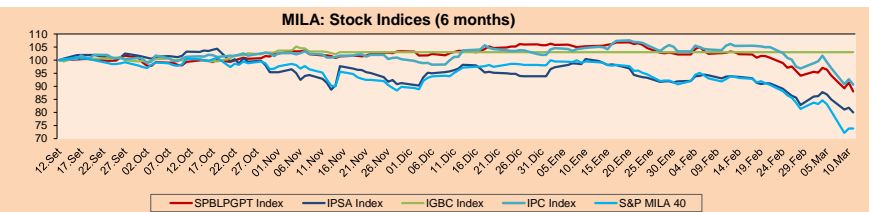
MILA

Peru: The BVL General Index ended today's session with a negative result of -3.70%. The index maintains a cumulative annual negative trend of -16.72% in local currency, while the adjusted yield in dollars amounts to -20.99%. Then, the S&P / BVL Peru SEL varied by -4.96% while the S&P / BVL LIMA 25 by -2.93%. The PEN spot reached \$ / 3.5167. Holder: Trade Balance registered a surplus of US \$ 283 million in January.

Chile: The IPISA index ended the day with a negative return -2.11%. The sectors most affected in the day were Materials (-3.44%) and Industrial (-3.06%). The shares with the worst performance were Sociedad Química y Minera de C (-4.84%) and Enel Americas SA (-4.42%). Headline: Chile loses flight: expectations of low GDP growth extends until 2022.

Colombia: The COLCAP index had a negative result of -4.76%. The sectors most affected in the day were Industrial (-13.21%) and Finance (-5.77%). The values with the worst results were Avianca Holdings SA (-13.21%) and Grupo de Inversiones Suramerica (-9.49%). Owner: Grupo ISA wins a renewable energy transmission project in Colombia.

Mexico: The MEXBOL index closed the session with a negative result of -2.24%. The sectors with the worst returns for the day were Health (-6.09%) and Industrial (-3.96%). The worst performing stocks were Fomento Economico Mexicano SAB (-7.11%) and Alfa SAB de CV (-7.06%). Headline: Car production in Mexico is at risk from the coronavirus.

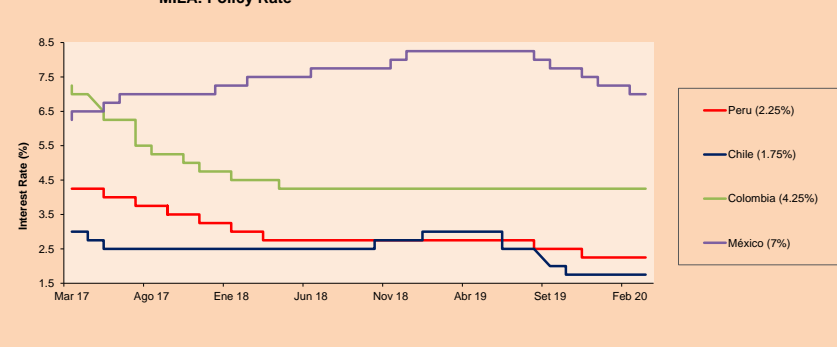


Base: 13/09/19=100
Source: Bloomberg

ETFs

ETFs	Curr.	Close	1D	5D	30 D	YTD	Exchange
▼ iShares MSCI All Peru Caped Index Fund	USD	28.19	-6.13%	-13.49%	-17.84%	-23.91%	NYSE Arca
▼ iShares MSCI All Chile Caped Index Fund	USD	25.05	-4.86%	-12.93%	-19.76%	-24.84%	Cboe BZX
▼ Global X MSCI Colombia	USD	9	-8.26%	-24.81%	-31.61%	-35.25%	NYSE Arca
▼ iShares MSCI Mexico Capped	USD	35.82	-5.04%	-18.39%	-22.45%	-20.45%	NYSE Arca
▼ iShares MSCI Emerging Markets	USD	37.46	-4.66%	-10.49%	-14.08%	-16.51%	NYSE Arca
▼ Vanguard FTSE Emerging Markets	USD	37.3	-4.33%	-10.51%	-13.70%	-16.12%	NYSE Arca
▼ iShares Core MSCI Emerging Markets	USD	44.9	-4.61%	-10.40%	-14.15%	-16.48%	NYSE Arca
▼ iShares JP Morgan Emerging Markets Bonds	USD	50.92	-2.82%	-6.96%	-10.05%	-13.19%	Cboe BZX
▼ Morgan Stanley Emerging Markets Domestic	USD	6.08	-2.41%	-9.66%	-11.63%	-13.02%	New York

MILA: Policy Rate



Source: Bloomberg

Capital Market Laboratory Codinador: Economist Bruno Bellido Anicama
Collaboration: Alonso Butters, Luis Davila and Jeanfranco Tineo.
e-mail: pulsobursatil@ulima.edu.pe
facebook: www.facebook.com/pulsobursatil.ul
Phone number : 4376767 Annex: 35340

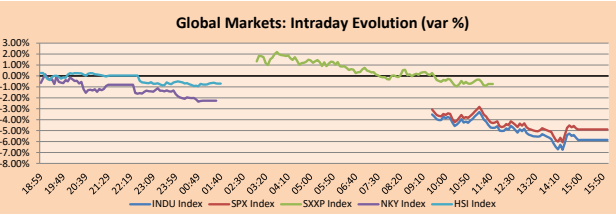


PULSO BURSÁTIL

WORLD

Main Indices	Close	1 D*	5 D*	1 M*	YTD*	Market Cap. (US\$ Mill.)
▼ Dow Jones (USA)	914.32	-5.86%	-13.06%	-19.55%	-17.47%	7,420,166
▼ Standard & Poor's 500 (EEUU)	2,741.38	-4.89%	-12.42%	-18.36%	-15.15%	24,817,166
▼ NASDAQ Composite (USA)	7,952.05	-4.70%	-11.82%	-17.50%	-11.37%	12,932,064
▼ Stoxx EUROPE 600 (Europe)	333.17	-0.74%	-13.75%	-22.24%	-19.88%	7,932,747
▼ DAX (Germany)	10,438.68	-0.35%	-13.93%	-23.40%	-21.21%	858,172
▼ FTSE 100 (United Kingdom)	5,878.52	-1.40%	-13.78%	-21.64%	-22.09%	1,221,969
▼ CAC 40 (France)	4,610.25	-0.57%	-16.64%	-23.86%	-22.88%	1,265,015
▼ IBEX 35 (Spain)	7,436.40	-0.34%	-16.54%	-24.75%	-22.13%	413,168
▲ MSCI AC Asia Pacific Index	150.99	0.86%	-4.37%	-11.13%	-11.53%	18,786,842
▲ HANG SENG (Hong Kong)	25,231.61	-0.53%	-3.78%	-9.32%	-10.49%	2,384,584
▼ SHANGHAI SE Comp. (China)	2,968.52	-0.94%	-1.43%	1.42%	-2.68%	4,945,070
▼ NIKKEI 225 (Japan)	19,416.06	-2.27%	-7.98%	-18.63%	-17.93%	3,019,417
▼ S&P / ASX 200 (Australia)	5,725.87	-3.60%	-9.48%	-19.22%	-14.34%	1,119,677
▼ KOSPI (South Korea)	1,908.27	-2.78%	-7.34%	-14.75%	-13.17%	1,034,888

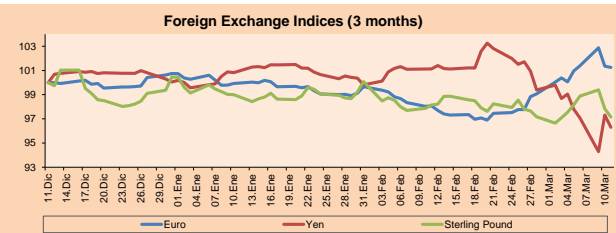
*Legend: Variation 1D: 1 Day; 5D: 5 Days; 1M: 1 Month; YTD: Var. % 12/31/19 to date



Source: Bloomberg

Currency	Price	1 D*	5 D*	1 M*	YTD*
▼ Euro	1.1270	-0.10%	1.20%	3.29%	0.51%
▼ Yen	104.5400	-1.04%	-2.78%	-4.76%	-3.75%
▼ Sterling Pound	1.2820	-0.70%	-0.40%	-0.74%	-3.30%
▲ Yuan	6.9606	0.04%	0.52%	-0.34%	-0.04%
▲ Hong Kong Dollar	7.7892	0.01%	-0.04%	0.04%	-0.28%
▲ Brazilian Real	4.8152	3.71%	5.15%	11.32%	19.47%
▲ Argentine Peso	62.6682	0.13%	0.59%	2.77%	4.67%

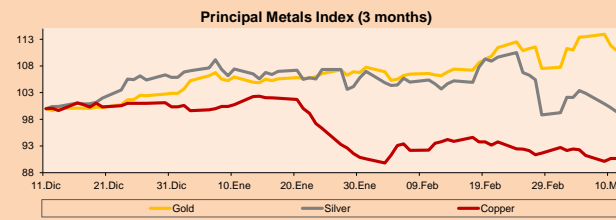
*Legend: Variation 1D: 1 Day; 5D: 5 Days; 1M: 1 Month; YTD: Var. % 12/31/19 to date



Base: 11/12/19=100
Source: Bloomberg

Commodities	Close	1 D*	5 D*	1 M*	YTD*
▼ Oro (US\$ Oz. T) (LME)	1,835.04	-0.87%	-0.12%	-4.00%	7.70%
▼ Plata (US\$ Oz. T) (LME)	16.75	-0.82%	-2.68%	-5.70%	-6.15%
- Cobres (US\$ TM) (LME)	5,565.75	0.00%	-1.90%	-1.70%	-9.65%
- Zinc (US\$ TM) (LME)	1,961.75	0.00%	0.01%	-7.73%	-13.94%
▼ Petróleo WTI (US\$ Barril) (NYM)	33.12	-3.61%	-29.20%	-33.47%	-45.17%
- Estano (US\$ TM) (LME)	16,880.00	0.00%	-0.32%	3.31%	-1.85%
- Plomo (US\$ TM) (LME)	1,817.25	0.00%	-2.36%	-1.17%	-5.03%
▼ Acaúcar #11 (US\$ Libra) (NYB-ICE)	12.26	-2.62%	-8.98%	-16.82%	-9.45%
▲ Cacao (US\$ TM) (NYB-ICE)	2,625.00	1.86%	-0.04%	-8.79%	3.31%
▼ Café Arabica (US\$ TM) (NYB-ICE)	112.05	-2.01%	-5.36%	9.75%	-15.05%

*Legend: Variación 1D: 1 Día; 5D: 5 Días; 1M: 1 Mes; YTD: Var. % 31/12/19 a la fecha



Base: 11/12/19=100
Source: Bloomberg

Equity

CONCHATORO	Price	▲%	Exchange	Largest losses	Curr.	Price	▼%	Exchange
1COV GY	EUR 29.74	1.85	Xetra	MTX GY	EUR 182.05	-3.01	Xetra	
DBK GY	EUR 5.972	1.53	Xetra	BEI GY	EUR 90.86	-2.43	Xetra	
EOAN GY	EUR 9.677	1.09	Xetra	LHA GY	EUR 10.195	-2.25	Xetra	
RWE GY	EUR 27.75	0.91	Xetra	FME GY	EUR 63.68	-2.21	Xetra	

Europe (Stocks from STOXX EUROPE 600)	Price	▲%	Exchange	Largest losses	Curr.	Price	▼%	Exchange
TLW LN	GBP 18.12	10.79	Londres	AMS SE	CHF 22.59	-10.64	SIX Swiss Ex	
DIA IM	EUR 113	8.24	Borsa Italiana	TGS NO	NOK 118.55	-10.53	Oslo	
BAM IM	EUR 1.3235	7.65	Borsa Italiana	PKN PW	PLN 46.47	-9.63	Warsaw	
UBI IM	EUR 2.756	6.08	Borsa Italiana	SUBC NO	NOK 54.14	-9.62	Oslo	

Global Overview:

United States:

The American markets ended today's session with a strong decline, influenced by the increase in coronavirus cases in the country, which has already reached 1107 cases and 36 deaths. In this way, the Federal Reserve (FED) has injected money into the economy through open market operations to banks, which already exceeds the figure of US \$ 175 million as of the date of the report. Similarly, the New York Fed promises more than US \$ 500,000 million to keep the financial markets calm and avoid capital outflows that affect the economy and specifically the stock market. In other corporate news, Wall Street joins Trump in calling for calm amid an atmosphere of market tension. Similarly, they ensure that a financial crisis is not happening. Among the Dow Jones companies that fell the most in this session were BoeingCo (-18.15%), Dow Inc (-10.86%), United Technologies Corp. (-9.94%) and American Express (-7.67%). Finally, the most representative indices S&P 500 (-4.89%), DJIA (-5.86%) and Nasdaq (-4.7%).

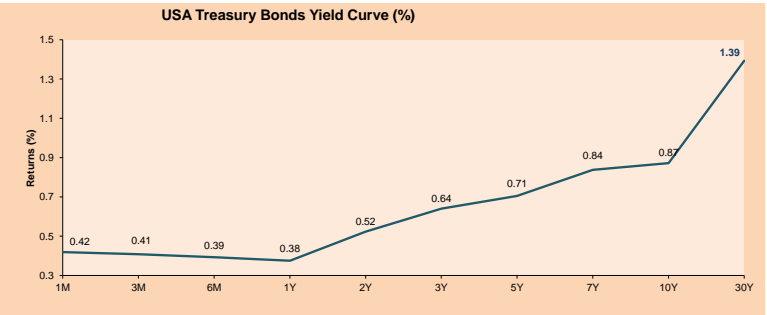
Europe:

European markets ended the day lower, influenced to a great extent by the high sales of shares in the US market amid this juncture of uncertainty. On the other hand, one of the countries most affected by the virus, Italy, closes all non-essential services as fear increases; consequently, the economy and especially the service and manufacturing industry will be highly affected. In addition, the death toll has increased to 827 as of the date of this edition. On the other hand, a manager at Goldman Sachs says that the virus could be worse than the market expects and have more damaging effects, that is, it could face greater falls than those presented. Similarly, the United Kingdom announces a £ 30 billion fiscal stimulus to stimulate the economy in the face of the damaging effects of the virus. In other corporate news, the companies that were most affected in this session are Adidas (-9.14%), HelloFresh (-6.98%), Aeroports Paris (-6.17%) and Valeo SA (-5.60%). Furthermore, sports events, concerts and others will be canceled and will have detrimental effects on the economy of Europe in general. Finally, the most representative indices Euro Stoxx (+0.37%), FTSE 100 (-1.40%), CAC 40 (-0.57) and DAX (-0.35%).

Asia:

Asian markets closed today's session lower as bankers evaluate an emergency rate cut in response to stimuli to the Asian economy. Within weeks of policy decision meetings for India, South Korea and Malaysia, analysts see these countries as the top candidates for making decisions about any possible rate cut ahead of schedule. In China, credit growth fell for the month of February as domestic demand weakens due to the same effects of COVID-19. The drop was seen by the growth in loans in February, being 855.4 billion yuan this month, compared to the expected 1.6 trillion yuan. On the commodities side, Saudi Arabia announced an increase in its share in oil production, contrary to the position of Russia, who expressed their rejection of OPEC's joint request to influence oil prices by reducing quotas. per barrel production per day. In this way, Saudi Aramco stated that it received a directive from the Ministry of Energy to increase its oil production capacity from 12.3 to 13 million barrels per day. Thus, the main Nikkei 225 (-2.27%), Hang Seng (-0.63%), CSI 300 (-1.33%), ASX 200 (-3.60%) and Shanghai Composite (-0.94%) indices closed downwards.

ETFs	Curr.	Close	1D	5D	30 D	YTD	Exchange
SPDR S&P 500 ETF TRUST	USD	274.36	-4.87%	-12.31%	-18.02%	-14.76%	NYSE Arca
ISHARES MSCI EMERGING MARKET	USD	37.46	-4.66%	-10.49%	-14.08%	-16.51%	NYSE Arca
ISHARES IBOXX HIGH YLD CORP	USD	80.84	-2.18%	-7.81%	-7.82%	-7.28%	NYSE Arca
FINANCIAL SELECT SECTOR SPDR	USD	22.84	-5.42%	-17.81%	-26.35%	-25.80%	NYSE Arca
VANECK GOLD MINERS	USD	25.17	-8.44%	-13.59%	-11.34%	-14.04%	NYSE Arca
ISHARES RUSSELL 2000 ETF	USD	125.88	-6.38%	-17.27%	-24.08%	-24.02%	NYSE Arca
SPDR GOLD SHARES	USD	153.93	-0.36%	-0.15%	3.89%	7.72%	NYSE Arca
ISHARES 20+ YEAR TREASURY BO	USD	156.53	-3.68%	1.20%	8.24%	15.90%	NASDAQ GM
INVESCO QQQ TRUST SERIES 1	USD	195.22	-4.36%	-10.54%	-15.84%	-8.18%	NASDAQ GM
ISHARES NASDAQ BIOTECHNOLOGY	USD	106.97	-4.75%	-12.09%	-12.84%	-11.24%	NASDAQ GM
ENERGY SELECT SECTOR SPDR	USD	33.67	-5.25%	-27.96%	-37.31%	-43.92%	NYSE Arca
PROSHARES ULTRA VIX ST FUTUR	USD	48.22	19.21%	107.40%	32.18%	274.03%	NYSE Arca
UNITED STATES OIL FUND LP	USD	6.94	-4.14%	-29.61%	-33.40%	-45.82%	NYSE Arca
ISHARES MSCI BRAZIL ETF	USD	29.68	-9.54%	-23.47%	-30.96%	-37.45%	NYSE Arca
SPDR S&P OIL & GAS EXP & PR	USD	9.32	-6.14%	-37.45%	-50.24%	-60.68%	NYSE Arca
UTILITIES SELECT SECTOR SPDR	USD	60.83	-5.03%	-11.48%	-11.65%	-5.87%	NYSE Arca
ISHARES US REAL ESTATE ETF	USD	82.84	-5.82%	-12.91%	-14.72%	-11.00%	NYSE Arca
SPDR S&P BIOTECH ETF	USD	79.24	-8.98%	-15.97%	-18.21%	-16.69%	NYSE Arca
ISHARES IBOXX INVESTMENT GRA	USD	123.85	-3.29%	-7.15%	-5.21%	-2.71%	NYSE Arca
ISHARES JP MORGAN USD EMERGI	USD	102.34	-4.52%	-12.39%	-11.25%	-10.02%	NASDAQ GM
REAL ESTATE SELECT SECT SPDR	USD	35.51	-5.36%	-11.42%	-12.10%	-8.17%	NYSE Arca
ISHARES CHINA LARGE-CAP ETF	USD	38.80	-3.41%	-5.96%	-6.51%	-11.07%	NYSE Arca
CONSUMER STAPLES SPDR	USD	57.58	-4.91%	-8.92%	-10.77%	-8.57%	NYSE Arca
VANECK JR GOLD MINERS	USD	33.46	-10.53%	-16.75%	-18.29%	-20.82%	NYSE Arca
SPDR BBG BARC HIGH YIELD BND	USD	100.15	-2.21%	-7.61%	-8.33%	-7.75%	NYSE Arca
VANGUARD REAL ESTATE ETF	USD	81.34	-6.01%	-13.05%	-15.18%	-11.66%	NYSE Arca
GRAYSACLE BITCOIN TRUST BTC	USD	8.61	-7.02%	-14.24%	-29.31%	5.13%	OTC US



Source: Bloomberg

Capital Market Laboratory Coordinator: Economist Bruno Bellido Anicama

Collaboration: Alonso Butters, Luis Davila and Jeanfranco Tineo

e-mail: pulsoburstatil@ulima.edu.pe

facebook: www.facebook.com/pulsoburstatil

Phone number: 4376767 Annex: 35340

PULSO BURSÁTIL

LIMA

Stocks

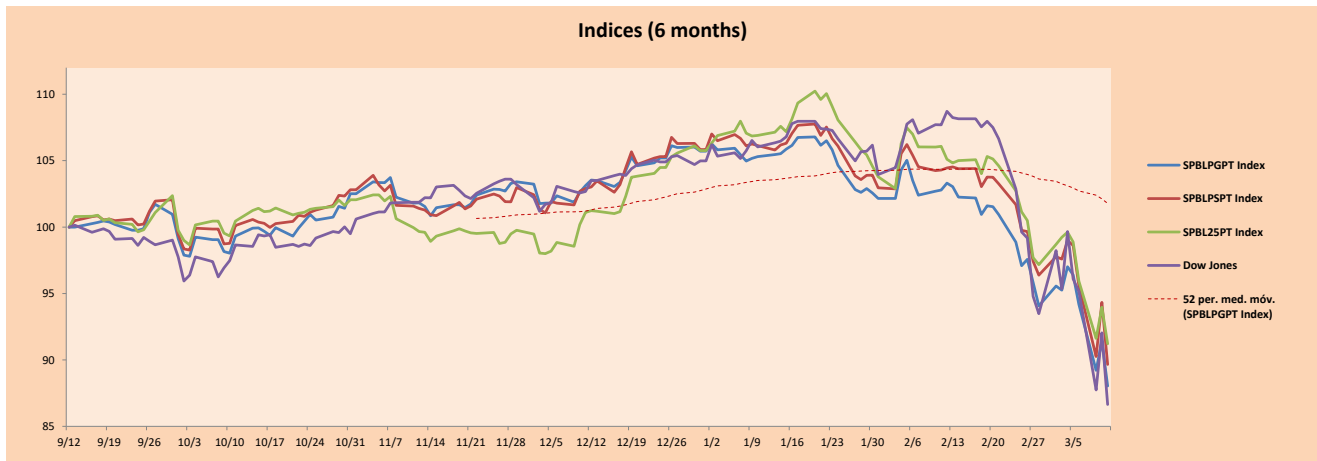
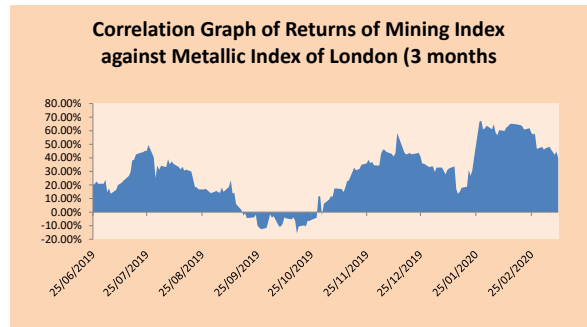
Ticker	Currency	Price	1D*	5D*	30D*	YTD*	Frequency	Volume (US\$)	Beta	CONCH Dividend Yield (%)	Price Earning	Market Cap. (M US\$)	Economic Sector*	Index Weight
COLSC (Colombia)	S/.	8.23	-2.75%	-7.79%	-8.88%	-6.52%	100.00%	201,542	0.70	2.92	14.75	1,995.55	Industrial	3.53%
ATACOB1 PE**	S/.	0.15	0.00%	-6.25%	-19.79%	-9.09%	80.00%	7,165	1.23	0.00	-	92.13	Mining	1.02%
BACKUS1 PE**	S/.	27.10	-0.33%	0.37%	-15.29%	-4.91%	85.00%	31,077	0.53	5.49	7.99	10,489.18	Industrial	0.82%
BAP PE**	US\$	171.55	-4.38%	-13.39%	-16.07%	-19.34%	100.00%	8,375,302	1.27	4.89	-	13,683.08	Diverse	5.82%
BVN PE**	US\$	8.58	-9.21%	-22.00%	-31.90%	-43.92%	95.00%	40,884	1.20	0.97	-	2,364.94	Mining	5.88%
CASAGRC1 PE**	S/.	2.57	0.00%	-12.88%	-11.68%	-15.18%	90.00%	5,626	0.89	0.49	11.99	61.55	Agricultural	1.31%
BBVAC1 PE**	S/.	3.15	-1.56%	-4.55%	-8.43%	-8.16%	100.00%	104,641	0.51	4.38	12.02	5,270.64	Finance	2.85%
CORARE1 PE**	S/.	0.83	-2.35%	-2.35%	-8.79%	-8.79%	85.00%	4,363	0.69	7.92	4.03	328.59	Industrial	1.72%
CPACASC1 PE**	S/.	5.90	-1.67%	-3.28%	-5.45%	-4.07%	95.00%	832,083	0.71	6.10	19.03	715.87	Industrial	2.38%
CVERDEC1 PE**	US\$	15.95	-0.31%	-6.18%	-16.05%	-17.36%	95.00%	42,076	0.82	2.69	-	5,583.39	Mining	5.25%
ENGEPEC1 PE**	S/.	2.18	-0.91%	-1.80%	-8.79%	-5.22%	50.00%	1,859	0.59	4.09	11.28	1,759.44	Public Services	1.44%
ENDISPC1**	S/.	6.65	0.00%	-2.06%	-1.19%	-9.52%	80.00%	3,379	0.47	3.46	10.42	1,207.30	Public Services	0.98%
FERREYC1 PE**	S/.	1.89	-2.07%	-10.00%	-10.00%	-13.70%	100.00%	677,604	0.85	5.42	7.47	524.28	Diverse	4.90%
GRAMONC1 PE**	S/.	1.56	-5.45%	-10.86%	-9.83%	-8.24%	100.00%	130,129	1.20	0.00	-	386.71	Diverse	4.05%
IFS PE**	US\$	34.00	-5.56%	-13.71%	-17.68%	-16.87%	95.00%	465,510	1.30	5.15	9.36	3,925.22	Diverse	7.22%
INRET1 PE**	US\$	31.50	-1.56%	-7.89%	-17.11%	-12.50%	95.00%	760,761	0.70	1.08	26.97	3,238.43	Diverse	5.28%
LUSURC1 PE**	S/.	25.50	-1.92%	-1.89%	0.04%	-0.97%	100.00%	195,157	0.65	4.71	20.41	3,530.34	Public Services	1.81%
MINSUR1 PE**	S/.	1.48	0.00%	-2.63%	-10.30%	-5.13%	95.00%	12,546	1.13	5.12	6.16	1,213.10	Mining	3.09%
PML PE**	US\$	0.06	-12.50%	-25.33%	-17.65%	0.00%	75.00%	8,280	1.40	0.00	-	14.77	Mining	2.12%
RELAPAC1 PE**	S/.	0.08	1.27%	-11.11%	-30.43%	-34.96%	90.00%	1,394	1.26	0.00	-	189.22	Industrial	2.12%
SCCO PE**	US\$	31.78	-4.48%	-10.08%	-15.80%	-24.23%	90.00%	25,150	1.53	5.03	16.55	24,567.81	Mining	2.14%
SIDERC1 PE**	S/.	0.74	-5.13%	-11.06%	-9.09%	-10.09%	100.00%	60,842	1.28	22.63	8.41	258.34	Industrial	1.43%
TV PE**	US\$	0.07	0.00%	-25.25%	-45.19%	-57.23%	95.00%	43,637	2.07	0.00	-	59.71	Mining	2.93%
UNACEMC1 PE**	S/.	1.70	-5.56%	-12.82%	-13.13%	-14.44%	90.00%	51,633	0.65	3.06	8.55	878.75	Industrial	3.00%
VOLCABC1 PE**	S/.	0.41	-6.82%	-13.68%	-24.07%	-7.87%	100.00%	290,389	1.59	0.00	-	1,863.73	Mining	5.90%
NEXAPEC1 PE**	S/.	2.88	-4.00%	-10.00%	-17.71%	-16.52%	40.00%	7,912	0.80	18.02	57.54	1,085.31	Mining	1.56%

Quantity of shares: 26
Source: Bloomberg, Económática
* Bloomberg Industry Classification System
** PER is used in the stock market and original currency of the instrument
*Legend: Variation 1D: 1 Day; 5D: 5 Days; 1M: 1 Month; YTD: Var.% 12/31/18 to date

Sectorial Indices

	Close	1D*	5D*	30D*	YTD*	Beta
Mining Index	222.23	-5.40%	-12.04%	-19.97%	-27.06%	1.34
Consumer Index	1,047.01	-1.33%	-4.64%	-12.88%	-8.17%	0.41
Industrial Index	188.28	-3.38%	-8.90%	-9.70%	-10.82%	0.64
Banking and Financial Index	1,016.31	-3.92%	-10.67%	-12.93%	-13.84%	1.20
Construction Index	205.93	-3.97%	-8.41%	-9.25%	-9.13%	0.57
Services Index	625.23	-0.88%	-1.47%	-3.04%	-4.03%	0.26
Juniors Index	12.93	-4.43%	-11.20%	-12.64%	-10.64%	0.40
Electric Index	610.38	-0.88%	-1.47%	-3.04%	-4.03%	0.26

*Legend: Variation 1D: 1 Day; 5D: 5 Days; 1M: 1 Month; YTD: Var.% 12/31/19 to date



Source: Bloomberg

Capital Market Laboratory Coodinator: Economist Bruno Bellido Anicama
Collaboration: Alonso Butter, Luis Davila and Jeanfranco Tineo.
e-mail: pulsobursatil@ulima.edu.pe
facebook: www.facebook.com/pulsobursatil.ul
Phone number : 4376767 Annex: 35340

The content of this document is just for informational purposes. The information and opinions expressed should not be consider as recommendations for future decisions. Under any circumstances, the Capital Market Laboratory of University of Lima will be responsible for the use of the statements in this document.

PULSO BURSÁTIL

SOVEREIGN RATING

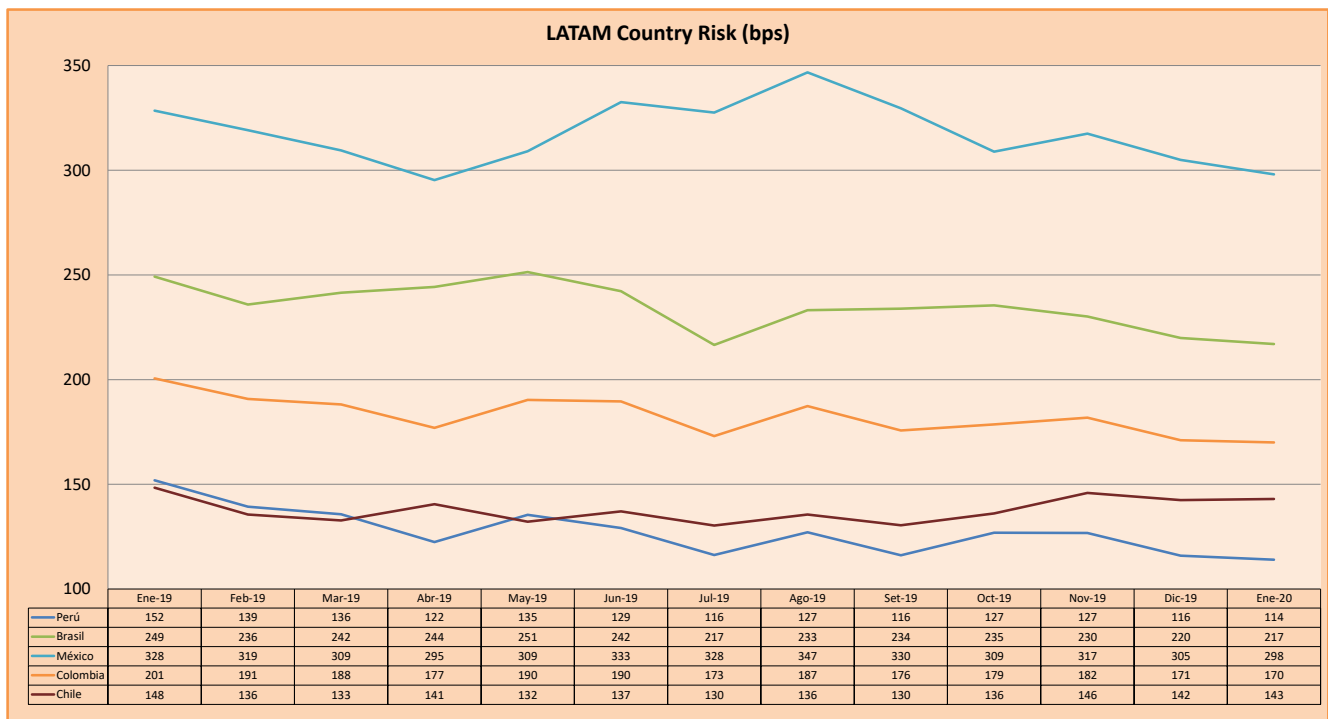
RISK RATINGS

Moody's	S&P	Fitch		
Aaa	AAA	AAA	Prime	
Aa1	AA+	AA+	High credit quality	
Aa2	AA	AA		
Aa3	AA-	AA-		
A1	A+	A+	Medium-high grade, with low credit risk	
A2	A	A		
A3	A-	A-		
Baa1	BBB+	BBB+	Moderate Credit Risk	
Baa2	BBB	BBB		
Baa3	BBB-	BBB-		
Ba1	BB+	BB+	It has speculative elements and it is subject to substantial credit risk	
Ba2	BB	BB		
Ba3	BB-	BB-		
B1	B+	B+	It is considered speculative and it has high credit risk	
B2	B	B		
B3	B-	B-		
Caa1	CCC+	CCC	Bad credit conditions and it is subject to high credit risk	
Caa2	CCC			
Caa3	CCC-			
Ca	C	DDD	Very close to default or in default	
C	D			DD
				D

Source: Bloomberg

Latin America Credit Rating			
Clasificadora de riesgo			
Country	Moody's	Fitch	S&P
Peru	A3	BBB+	BBB+
México	Ba2	BB-	BB-
Venezuela	C	WD	SD
Brazil	Ba2	BB-	BB-
Colombia	Baa2	BBB	BBB-
Chile	A1	A	A+
Argentine	Caa2 *	CC	CCC-
Panama	Baa1	BBB	BBB+

Source: Bloomberg



Source: BCRP

Capital Market Laboratory Coordinator: Economist Bruno Bellido Anicama
 Support: Alonso Butters, Luis Davila and Jeanfranco Tineo.
 e-mail: pulsobursatil@ulima.edu.pe
 facebook: www.facebook.com/pulsobursatil.ul
 Phone number : 4376767 Annex: 35340

The content of this document is just for informational purposes. The information and opinions expressed should not be considered as recommendations for future decisions. Under any circumstances, the Capital Market Laboratory of University of Lima will be responsible for the use of the statements in this document.