

PULSO BURSÁTIL

FACULTAD DE CIENCIAS EMPRESARIALES Y ECONÓMICAS
CARRERA DE ECONOMÍA
LABORATORIO DE MERCADO DE CAPITALES



MILA

Lima, May 14, 2021

Main Indexes	Close	1 D	5 D	1 M	YTD	Cap. Burs. (US\$ bill)
▲ IPSA (Chile)	4,574.69	2.95%	-0.96%	-8.29%	9.52%	133.19
▲ IGPA (Chile)	23,054.59	2.69%	-1.03%	-8.35%	9.74%	159.67
▲ COLSC (Colombia)	996.60	0.94%	3.25%	-2.61%	-5.89%	4.59
▲ COLCAP (Colombia)	1,289.75	2.18%	0.61%	-2.08%	-10.30%	76.52
▲ S&P/BVL (Perú)*	21,880.50	1.70%	8.44%	3.24%	5.08%	110.79
▲ S&P/BVL SEL (Perú)	580.09	1.14%	7.95%	2.43%	5.20%	99.81
▲ S&P/BVL LIMA 25	28,610.16	0.73%	7.55%	1.24%	13.54%	109.87
▲ IPC (México)	49,219.26	0.80%	-0.06%	1.01%	11.69%	308.81
▲ S&P MILA 40	537.81	3.22%	1.87%	-4.97%	0.59%	6,134.60

*Legend: Variation 1D: 1 day; 5D: 5 days; 1M: 1 Month; YTD: Var% 12/31/20 to date

Equity

Largest gains	Exchange	Currency	Price	▲%
EMPRESAS COPEC	Chile	CLP	8,000.00	6.24
BUENAVENTURA-ADR	Peru	USD	11.69	6.08
FALABELLA SA	Chile	CLP	3,400.00	5.26
CMPC	Chile	CLP	2,004.80	4.96
ENEL CHILE SA	Chile	CLP	50.99	4.47

Per Turnover

	Exchange	Amount (US\$)
FALABELLA SA	Chile	44,789,843
WALMART DE MEXIC	Mexico	38,135,834
GRUPO F BANORT-O	Mexico	37,410,201
SOQUIMICH-B	Chile	27,005,882
BANCO DE CHILE	Chile	25,874,777

Largest losses	Exchange	Currency	Price	▼%
GRUPO MEXICO-B	Mexico	MXN	100.58	-2.92
ENGIE ENERGIA CH	Chile	CLP	705.00	-2.76
VOLCAN CIA MIN-B	Peru	PEN	0.75	-2.60
SOUTHERN COPPER	Peru	USD	75.50	-2.20
GRUPO BIMBO-A	Mexico	MXN	39.01	-1.94

Per Volume

	Exchange	Volume
ITAU CORPBANCA	Chile	1,100,349,532
BANCO SANTANDER	Chile	408,331,919
BANCO DE CHILE	Chile	239,838,412
ENEL CHILE SA	Chile	145,973,668
ENEL AMERICAS SA	Chile	125,699,986

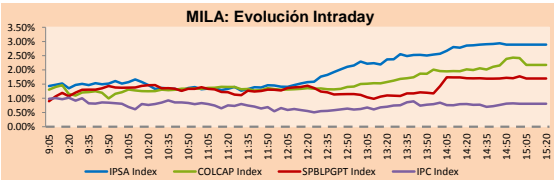
MILA

Peru: The General Index of BVL ended today's session with a positive performance of +1.70%. The index maintains a positive annual cumulative trend of +5.08% in local currency, while the dollar-adjusted performance amounted to +3.35%. Then, the S&P / BVL Peru SEL varied by +1.14% while the S&P / BVL LIMA 25 by +0.73%. The spot PEN reached S / 3.6788. Headline: Central Reserve Bank: GDP would have grown 3% in the first quarter, above the projected 1.5%.

Chile: The IPSA index ended the day with a positive return of +2.90%. The most benefited sectors of the day were Energy (+6.24%) and Consumer Staples (+4.80%). The best performing stocks were Empresas COPEC (+6.24%) and SACI Falabella (+5.26%). Headline: Bice and 4Life join Penta in claim against CMF for annuity withdrawals.

Colombia: The COLCAP index closed today with a positive return of +2.18%. The sectors that benefited the most during the day were Energy (+3.16%) and Utilities (+2.25%). The best performing stocks were Bancolombia SA (+7.40%) and Ecopetrol SA (+6.34%). Headline: Colombian economy grew 1.1% in the first quarter.

Mexico: The IPC index closed the day with a positive performance of +0.80%. The sectors that benefited the most during the day were Financials (+2.63%) and Industrials (+2.25%). The best performing stocks were Grupo Financiero Banorte SA de CV (+4.36%) and Grupo Aeroportuario del Centro (+3.99%). Headline: Mexico surpasses 22 million COVID vaccines administered

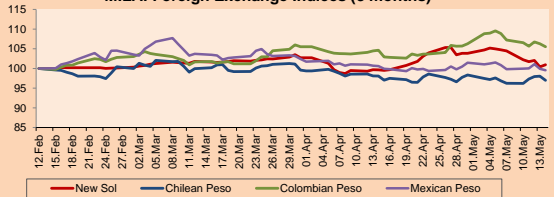


Source: Bloomberg

Currency	Price	1D*	5D*	30 D*	YTD*
▲ Sol (PEN)	3.6788	0.55%	-3.39%	1.28%	1.68%
▲ Chilean Peso (CLP)	700.43	-1.06%	0.79%	-1.10%	-1.59%
▲ Colombian Peso (COP)	3,704.54	-0.68%	-1.57%	0.88%	8.01%
▼ Mexican Peso (MXN)	19.87	-0.36%	-0.26%	-1.02%	-0.25%

*Legend: Variation 1D: 1 day; 5D: 5 days; 1M: 1 Month; YTD: Var% 12/31/20 to date

MILA: Foreign Exchange Indices (3 months)

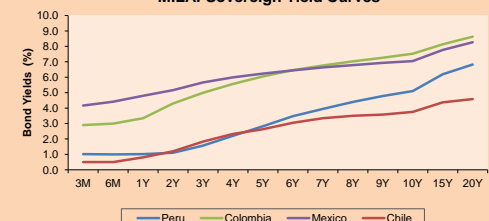


Base: 12/02/21=100
Source: Bloomberg

Fixed Income

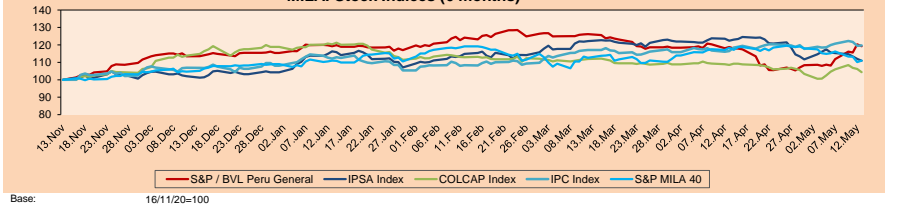
	Currency	Price	Bid Yield (%)	Ask Yield (%)	Duration
PERU 7.35 07/21/25	USD	123.293	1.63	1.50	3.65
PERU 4.125 08/25/27	USD	111.514	2.20	2.10	5.60
PERU 8.75 11/21/33	USD	156.264	3.28	3.21	8.59
PERU 6.55 03/14/37	USD	135.739	3.60	3.55	10.42
PERU 5.625 11/18/2050	USD	134.556	3.71	3.67	16.71
CHILE 2.25 10/30/22	USD	102.624	0.56	0.31	1.43
CHILE 3.125 01/21/26	USD	108.123	1.38	1.28	4.37
CHILE 3.625 10/30/42	USD	104.81	3.33	3.29	15.47
COLOM 11.85 03/09/28	USD	159.912	2.45	2.14	5.22
COLOM 10.375 01/28/33	USD	149.694	4.88	4.67	7.69
COLOM 7.375 09/18/37	USD	131.649	4.64	4.55	10.49
COLOM 6.125 01/18/41	USD	118.776	4.68	4.63	12.17
MEX 4 10/02/23	USD	118.776	4.684	4.629	12.17
MEX5.55 01/45	USD	117.845	4.36	4.31	14.05

MILA: Sovereign Yield Curves



Source: Bloomberg

MILA: Stock Indices (6 months)

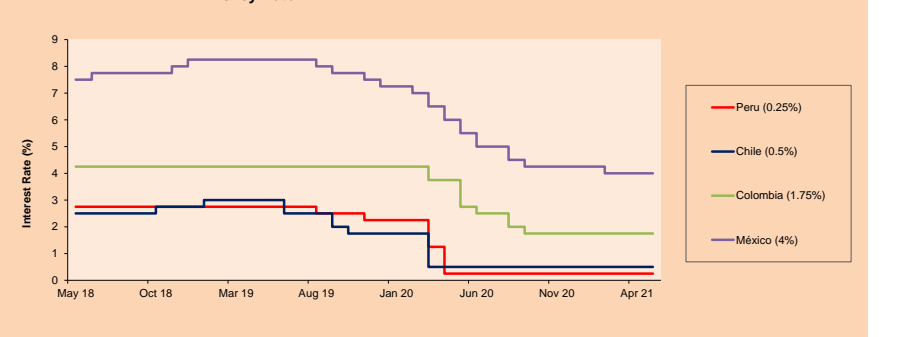


Base: 16/11/20=100
Source: Bloomberg

ETFs

	Curr.	Close	1D	5D	30 D	YTD	Exchange
▲ iShares MSCI All Peru Caped Index Fund	USD	35.38	1.03%	6.99%	0.58%	2.02%	NYSE Arca
▲ iShares MSCI All Chile Caped Index Fund	USD	32.55	3.79%	-2.19%	-6.28%	7.75%	Cboe BZX
▲ Global X MSCI Colombia	USD	10.2	2.62%	3.56%	-1.46%	-10.21%	NYSE Arca
▲ iShares MSCI Mexico Capped	USD	47.11	1.01%	0.13%	2.44%	9.58%	NYSE Arca
▲ iShares MSCI Emerging Markets	USD	52.95	1.81%	-3.18%	-1.43%	2.48%	NYSE Arca
▲ Vanguard FTSE Emerging Markets	USD	51.8	1.65%	-3.18%	-0.67%	3.37%	NYSE Arca
▲ iShares Core MSCI Emerging Markets	USD	64.2	1.63%	-3.28%	-1.15%	3.48%	NYSE Arca
▲ iShares JP Morgan Emerging Markets Bonds	USD	62.89	1.19%	-1.80%	-0.02%	2.96%	Cboe BZX
▲ Morgan Stanley Emerging Markets Domestic	USD	6.12	0.66%	-0.33%	2.00%	-2.70%	New York

MILA: Policy Rate



Source: Bloomberg

Capital Market Laboratory Coordinator: Economist Bruno Bellido
Collaboration: Maria Camarena, Alonso García, Adrian Paredes y Jairo Valverde
email: pulso@ulima.edu.pe
facebook: www.facebook.com/pulso@ulima.edu.pe

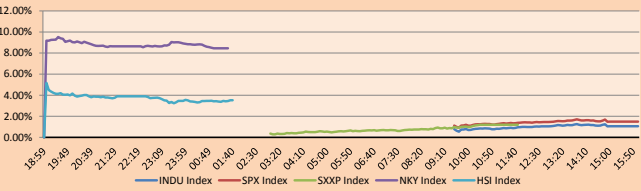
The content of this document is just for informational purposes. The information and opinions expressed should not be consider as recommendations for future decisions. Under any circumstances, the Capital Market Laboratory of University of Lima will be responsible for the use of the statements in this document.

WORLD

Main Indices	Close	1 D*	5 D*	1 M*	YTD*	Market Cap. (US\$ Mill.)
▲ Dow Jones (USA)	34,382.13	1.06%	-1.14%	0.53%	12.34%	10,194,853
▲ Standard & Poor's 500 (EUUU)	4,173.85	1.49%	-1.39%	-0.28%	11.12%	36,863,930
▲ NASDAQ Composite (USA)	13,429.98	2.32%	-2.34%	-4.43%	4.20%	22,324,096
▲ Stoxx EUROPE 600 (Europe)	442.53	1.19%	-0.54%	0.01%	10.90%	10,029,838
▲ DAX (Germany)	15,416.64	1.43%	0.11%	-0.28%	12.38%	1,136,714
▲ FTSE 100 (United Kingdom)	7,043.61	1.15%	-1.21%	0.34%	9.03%	1,446,202
▲ CAC 40 (France)	6,385.14	1.54%	-0.01%	1.56%	15.02%	1,726,287
▲ IBEX 35 (Spain)	9,145.60	2.00%	0.95%	6.18%	13.28%	505,504
▲ MSCI AC Asia Pacific Index	200.80	1.44%	-3.24%	-3.75%	0.44%	25,728,531
▲ HANG SENG (Hong Kong)	28,027.57	1.11%	-2.04%	-3.25%	2.92%	4,252,439
▲ SHANGHAI SE Comp. (China)	3,490.38	1.77%	2.09%	1.86%	0.50%	6,712,252
▲ NIKKEI 225 (Japan)	28,084.47	2.32%	-4.34%	-5.39%	2.33%	3,848,853
▲ S&P / ASX 200 (Australia)	7,014.24	0.45%	-0.94%	-0.70%	6.48%	1,728,041
▲ KOSPI (South Korea)	3,153.32	0.80%	-0.06%	-1.42%	9.74%	1,879,627

*Legend: Variation 1D: 1 Day; 5D: 5 Days; 1M: 1 Month; YTD: Var.% 12/31/20 to date

Global Markets: Intraday Evolution (var %)

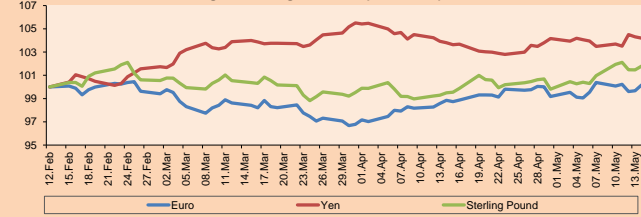


Source: Bloomberg

Currency	Price	1 D*	5 D*	1 M*	YTD*
▲ Euro	1.2141	0.50%	-0.21%	1.34%	-0.61%
▼ Yen	109.5007	-0.11%	0.69%	0.39%	5.91%
▲ Sterling Pound	1.4097	0.32%	0.81%	2.31%	3.12%
▼ Yuan	6.4371	-0.23%	0.06%	-1.42%	-1.38%
▼ Hong Kong Dollar	7.7677	-0.01%	0.02%	0.02%	0.19%
▼ Brazilian Real	5.2734	-0.69%	0.69%	-6.72%	1.44%
▼ Argentine Peso	94.027	0.03%	0.22%	1.47%	11.76%

*Legend: Variation 1D: 1 Day; 5D: 5 Days; 1M: 1 Month; YTD: Var.% 12/31/20 to date

Foreign Exchange Indices (3 months)



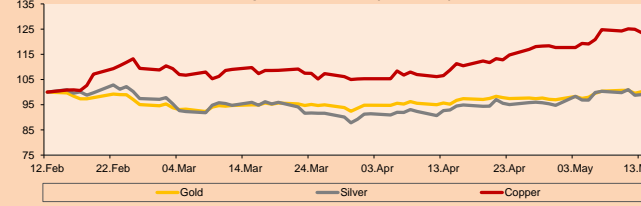
Base: 12/02/21=100

Source: Bloomberg

Commodities	Close	1 D*	5 D*	1 M*	YTD*
▲ Oro (US\$ Oz. T) (LME)	1,843.43	0.91%	0.67%	6.16%	-2.89%
▲ Plata (US\$ Oz. T) (LME)	27.42	1.22%	-0.10%	7.87%	3.87%
▼ Cobre (US\$ TM) (LME)	10,214.50	-1.09%	-1.97%	12.49%	31.82%
▲ Zinc (US\$ TM) (LME)	2,919.75	0.53%	-2.73%	4.25%	6.98%
▲ Petróleo WTI (US\$ Barril) (NYM)	65.37	2.43%	0.72%	3.40%	34.42%
▲ Estañol (US\$ TM) (LME)	31,300.00	0.79%	-4.31%	12.72%	52.35%
▲ Plomo (US\$ TM) (LME)	2,137.80	0.33%	-3.71%	8.31%	8.20%
▼ Azúcar #11 (US\$ Libra) (NYB-ICE)	16.96	-0.88%	-3.03%	6.80%	19.52%
▼ Cacao (US\$ TM) (NYB-ICE)	2,474.00	-1.12%	0.45%	0.61%	-1.47%
▼ Café Arábica (US\$ TM) (NYB-ICE)	145.00	-0.96%	-5.17%	8.17%	9.97%

*Leyenda: Variación 1D: 1 Día; 5D: 5 Días; 1M: 1 Mes; YTD: Var.% 31/12/20 a la fecha

Principal Metals Index (3 months)



Base: 12/02/21=100

Source: Bloomberg

Equity

Germany (Stocks from DAX Index)

Largest gains	Curr.	Price	▲ %	Exchange	Largest losses	Curr.	Price	▼ %	Exchange
ENR GY	EUR	25.2	3.87	Xetra	DBER GY	EUR	104.75	-1.83	Xetra
IFX GY	EUR	31.62	3.25	Xetra	BAYN GY	EUR	57.06	-0.04	Xetra
SIE GY	EUR	144.48	2.96	Xetra	EOAN GY	EUR	10.592	0.09	Xetra
VOW3 GY	EUR	210.85	2.53	Xetra	BAS GY	EUR	69.13	0.32	Xetra

Europe (Stocks from STOXX EUROPE 600)

Largest gains	Curr.	Price	▲ %	Exchange	Largest losses	Curr.	Price	▼ %	Exchange
ROSE SE	CHF	325	5.52	SIX Swiss Ex	NIBES SB	SEK	314	-3.65	Stockholm
EMG LN	GBP	171.4	4.96	Londres	EPIA SS	SEK	194.6	-3.57	Stockholm
AMS SQ	EUR	61.66	4.94	Soc.Bol SIBE	INW IM	EUR	9.4	-2.97	Borsa Italiana
TRN LN	GBP	439.8	4.91	Londres	SALM NO	NOK	576.2	-2.83	Oslo

Global Overview:

United States:

The main US indexes closed the session with positive returns today, as investors put aside concerns about inflation and a possible rise in interest rates and bought stocks hit by the volatility of the week. The S&P 500 closed higher, obtaining profitability in all its sectors, leading the energy sector with a rise of 3.25%, thanks to the increase in the price of raw materials, especially crude oil. On the other hand, technology shares ended up on the rise, among the most representative are Tesla Inc, Apple Inc, Amazon Inc, Alphabet Inc and Microsoft Corp. On the other hand, the price of the dollar fell, due to the recovery of appetite due to risk, it raises international currencies, with the euro being the most benefited. Likewise, crude oil was boosted by a fall in the dollar, which made the commodity more attractive. As for cryptocurrencies, bitcoin had a slight recovery, after Elon Musk said that they would stop accepting the token as a means of payment, due to environmental concerns. In summary, DOW JONES + 1.06%, Nasdaq + 2.32% and S&P 500 + 1.49% ended the day higher.

Europe:

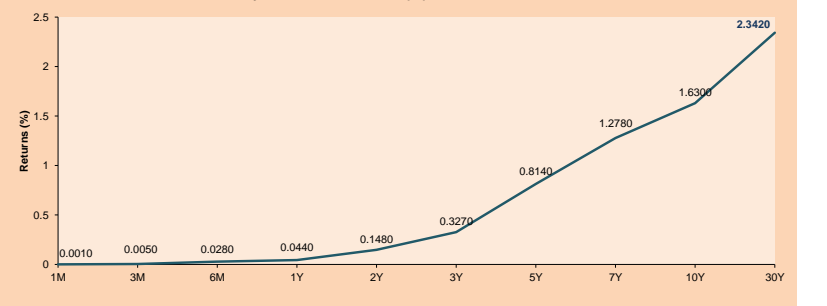
The main European market indices ended the session with positive returns due to an increase in earnings in the energy and retail sectors after the FED revealed that it will not tighten monetary policy. In the case of the STOXX 600, although it closed the day with a positive return of 1.1%, it closed the week with a 0.5% due to the increase in the price of raw materials. In the British market it closed with positive returns despite the fact that the "footsie" returned to above 7,000. The French market closed with positive returns after gains in the Food and Pharmacy sectors; Gas and Water; and Finance. In turn, this market was also driven by the rise of Wall Street. Finally, the German market closed higher, driven by increases in the Industrial, Technology and Transport and Logistics sectors. The companies with the best performance of the day were MTU Aero Engines + 3.96% and Siemens Energy AG + 3.87%, which also benefited from the rise in crude oil. Thus, FTSE 100 + 1.15%; DAX + 1.43%; STOXX 600 + 1.21%, CAC 40 + 1.54% closed the day with gains

Asia:

Major Asian indices ended the week with gains following Wall Street's recovery last session. In Hong Kong, China's State Administration of Market Regulation continues to promote regulatory rectification for all companies. In individual stocks, Alibaba posted its first operating loss since it went public in 2014 after an antitrust fine was imposed. Similarly, in Japan, the Nikkei posted its biggest weekly loss -4.30% in nine months following the resurgence of COVID-19 cases and low vaccination rates curbing investors' risk appetite. The main Australian index hit a 14-month high driven by the energy +1.70% and utilities +1.44% sectors. Taiwan stocks rose 1% to snap four sessions of losses after Prime Minister Su Tseng-chang said the COVID-19 alert level would not be raised and that there were enough stocks in Taiwan. would not be raised and that there were sufficient resources to fight the pandemic. Thus, NIKKEI +2.32%; HANG SENG +1.11%; CSI 300 +2.36%; S&P/ASX 200 +0.45%; KOSPI +1.00%; SHANGHAI COMPOSITE +1.77% closed higher.

ETFs	Curr.	Close	1D	5D	30 D	YTD	Exchange
SPDR S&P 500 ETF TRUST	USD	416.58	1.54%	-1.31%	1.25%	11.42%	NYSE Arca
ISHARES MSCI EMERGING MARKET	USD	52.95	1.81%	-3.18%	-1.43%	2.48%	NYSE Arca
ISHARES IBOXX HIGH YLD CORP	USD	87.21	0.32%	-0.14%	0.09%	-0.10%	NYSE Arca
FINANCIAL SELECT SECTOR SPDR	USD	37.88	1.58%	0.26%	7.67%	28.49%	NYSE Arca
VANECK GOLD MINERS	USD	37.84	2.46%	1.12%	10.35%	5.05%	NYSE Arca
ISHARES RUSSELL 2000 ETF	USD	221.02	2.44%	-1.94%	-1.03%	12.73%	NYSE Arca
SPDR GOLD SHARES	USD	172.69	0.91%	0.64%	6.13%	-3.18%	NYSE Arca
ISHARES 20+ YEAR TREASURY BO	USD	137.08	0.94%	-1.54%	-0.70%	-13.09%	NASDAQ GM
INVESCO QQQ TRUST SERIES 1	USD	326.39	2.21%	-2.34%	-3.01%	4.03%	NASDAQ GM
ISHARES NASDAQ BIOTECHNOLOGY	USD	149.68	2.43%	-0.02%	-1.10%	-1.19%	NYSE Arca
ENERGY SELECT SECTOR SPDR	USD	53.49	3.10%	-0.26%	8.74%	41.13%	NYSE Arca
PROSHARES ULTRA VIX ST FUTUR	USD	4.25	-17.95%	4.68%	-12.19%	-60.09%	Cboe BZX
UNITED STATES OIL FUND LP	USD	44.71	2.05%	0.63%	3.88%	35.44%	NYSE Arca
ISHARES MSCI BRAZIL ETF	USD	37.49	1.38%	-1.37%	9.17%	1.13%	NYSE Arca
SPDR S&P OIL & GAS EXP & PR	USD	86.36	5.85%	-0.33%	7.90%	47.62%	NYSE Arca
UTILITIES SELECT SECTOR SPDR	USD	65.91	0.49%	-0.20%	-0.05%	5.12%	NYSE Arca
ISHARES US REAL ESTATE ETF	USD	97.33	1.11%	-1.28%	3.04%	13.64%	NYSE Arca
SPDR S&P BIOTECH ETF	USD	126.92	3.63%	-0.64%	-4.08%	-9.85%	NYSE Arca
ISHARES IBOXX INVESTMENT GRA	USD	131.05	0.54%	-0.53%	-0.08%	-5.13%	NYSE Arca
ISHARES JP MORGAN USD EMERGI	USD	111.23	0.52%	-0.33%	0.90%	-0.40%	NASDAQ GM
REAL ESTATE SELECT SECT SPDR	USD	41.95	0.94%	-0.99%	3.40%	14.74%	NYSE Arca
ISHARES CHINA LARGE-CAP ETF	USD	44.21	1.52%	-4.00%	-5.11%	-4.78%	NYSE Arca
CONSUMER STAPLES SPDR	USD	70.91	0.44%	0.38%	2.98%	5.13%	NYSE Arca
VANECK JR GOLD MINERS	USD	51.11	3.29%	-0.70%	6.90%	-5.77%	NYSE Arca
SPDR BBG BARC HIGH YIELD BND	USD	108.82	0.30%	-0.18%	0.05%	-0.11%	NYSE Arca
VANGUARD REAL ESTATE ETF	USD	97.08	1.19%	-1.38%	2.99%	14.31%	NYSE Arca
GRAYSCALE BITCOIN TRUST BTC	USD	39.43	6.05%	-15.89%	-23.44%	23.22%	OTC US

USA Treasury Bonds Yield Curve (%)



Source: Bloomberg

LIMA

Stocks

	Ticker	Currency	Price	1D*	5D*	30D*	YTD*	Frequency	Volume (US\$)	Beta	Dividend Yield (%)	Price Earning	Market Cap. (M US\$)	Economic Sector*	Index Weight
▲	ALICORC1 PE**	S/.	7.45	0.94%	3.25%	-2.61%	-5.89%	100.00%	588,656	0.69	3.36	19.45	1,730.62	Industrial	3.53%
▼	ATACOBC1 PE**	S/.	0.14	-1.43%	9.52%	-8.00%	0.00%	80.00%	10,558	1.16	0.00	-	35.44	Mining	1.02%
▲	BACKUSI1 PE**	S/.	20.32	1.04%	1.60%	-11.65%	0.84%	100.00%	16,250	0.69	1.73	9.75	7,619.21	Industrial	0.82%
▲	BAP PE**	US\$	146.00	2.82%	20.26%	1.74%	-9.09%	100.00%	1,296,783	1.25	6.03	-	13,779.82	Diverse	5.82%
▲	BVN PE**	US\$	11.69	6.08%	13.39%	10.81%	-2.58%	100.00%	726,076	1.17	0.00	-	3,216.64	Mining	5.88%
▲	CASAGRC1 PE**	S/.	6.19	1.48%	5.81%	0.65%	30.32%	95.00%	35,772	0.81	3.65	5.87	141.73	Agricultural	1.31%
-	BBVAC1 PE**	S/.	2.23	0.00%	8.78%	-7.47%	2.76%	95.00%	601	0.87	0.00	23.34	3,957.83	Finance	2.85%
▼	CORAREI1 PE**	S/.	1.23	-0.81%	8.85%	4.24%	38.20%	100.00%	199,272	1.04	7.85	3.94	406.63	Industrial	1.72%
▲	CPACASC1 PE**	S/.	5.85	0.69%	6.56%	5.41%	10.38%	100.00%	139,881	0.64	3.93	41.79	726.59	Industrial	2.38%
▼	CVERDEC1 PE**	US\$	24.00	-3.61%	1.69%	3.45%	14.72%	100.00%	90,776	1.26	2.38	30.60	8,401.34	Mining	5.25%
-	ENGEPEC1 PE**	S/.	2.38	0.00%	7.21%	-5.56%	19.00%	100.00%	15,804	0.68	11.98	14.55	1,836.53	Public Services	1.44%
-	ENDISPC1**	S/.	5.20	0.00%	4.00%	-12.61%	-3.70%	90.00%	8,104	0.77	3.28	11.70	902.61	Public Services	0.98%
▲	FERREYC1 PE**	S/.	1.99	0.51%	4.19%	-5.24%	14.37%	100.00%	148,019	0.82	9.15	13.24	527.78	Diverse	4.90%
▲	AENZAC1 PE**	S/.	1.32	2.33%	7.32%	-20.00%	-24.14%	100.00%	152,779	0.70	0.00	-	312.86	Diverse	4.05%
▲	IFS PE**	US\$	30.00	1.08%	20.10%	-4.97%	-3.04%	100.00%	383,741	1.22	2.57	16.61	3,463.43	Diverse	7.22%
▲	INRETC1 PE**	US\$	41.00	1.21%	16.81%	2.50%	4.59%	100.00%	618,478	0.79	1.66	51.19	4,215.10	Diverse	5.28%
▼	LUSURC1 PE**	S/.	12.50	-3.85%	1.63%	-12.28%	-50.98%	85.00%	28,011	0.96	6.88	12.59	1,654.59	Public Services	1.81%
▲	MINSUR1 PE**	S/.	3.22	-0.62%	6.98%	17.09%	74.05%	100.00%	1,388,114	0.97	0.00	86.52	2,523.45	Mining	3.09%
-	PML PE**	US\$	0.14	0.00%	0.75%	-11.18%	27.36%	85.00%	6,750	1.51	0.00	-	35.67	Mining	2.12%
▲	RELAPAC1 PE**	S/.	0.13	5.83%	10.43%	-1.55%	84.06%	100.00%	129,620	0.97	0.00	3.51	287.20	Industrial	2.12%
▲	SCCO PE**	US\$	75.50	-2.20%	-1.91%	2.40%	14.57%	100.00%	107,685	1.09	2.91	26.23	58,367.03	Mining	2.14%
▼	SIDERC1 PE**	S/.	1.09	-3.54%	6.86%	-2.68%	28.24%	100.00%	57,160	0.97	20.60	8.73	263.08	Industrial	1.43%
▼	TV PE**	US\$	0.20	-1.98%	-6.60%	27.74%	34.69%	100.00%	37,730	1.47	0.00	-	195.84	Mining	2.93%
-	UNACEMC1 PE**	S/.	1.60	0.00%	6.67%	-4.19%	3.23%	100.00%	20,572	0.97	1.63	35.05	790.75	Industrial	3.00%
▼	VOLCABC1 PE**	S/.	0.75	-2.60%	5.63%	-5.06%	44.23%	100.00%	124,260	1.39	0.00	-	831.09	Mining	5.90%
▼	NEXAPEC1 PE**	S/.	3.55	-2.74%	1.43%	3.50%	25.44%	75.00%	4,866	1.21	0.00	-	1,274.37	Mining	1.56%

Quantity of shares: 26

Source: Bloomberg, Economática

* Bloomberg Industry Classification System

** PER is used in the stock market and original currency of the instrument

*Legend: Variation 1D: 1 Day; 5D: 5 Days; 1M: 1 Month; YTD: Var.% 12/31/20 to date

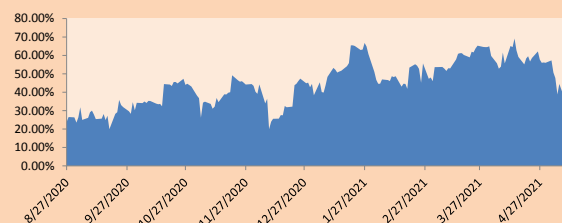
Sectorial Indices

		Close	1D*	5D*	30D*	YTD*	Beta
▲	S&P/BVLMining	452.76	0.14%	-0.33%	6.60%	16.11%	1.12
▲	S&P/BVLConsumer	1,171.11	0.62%	10.83%	0.98%	7.58%	0.57
▲	S&P/BVLIndustrials	204.56	1.22%	6.39%	-2.75%	7.35%	0.63
▲	S&P/BVLFinancials	968.89	3.06%	15.61%	2.20%	-6.29%	1.26
▲	S&P/BVLConstruction	212.35	1.45%	7.33%	-3.80%	1.54%	0.63
▲	S&P/BVLPublicSvcs	602.91	0.14%	6.37%	-6.72%	-1.82%	0.42
▲	S&P/BVLElectricUtil	588.59	0.14%	6.37%	-6.72%	-1.82%	0.42

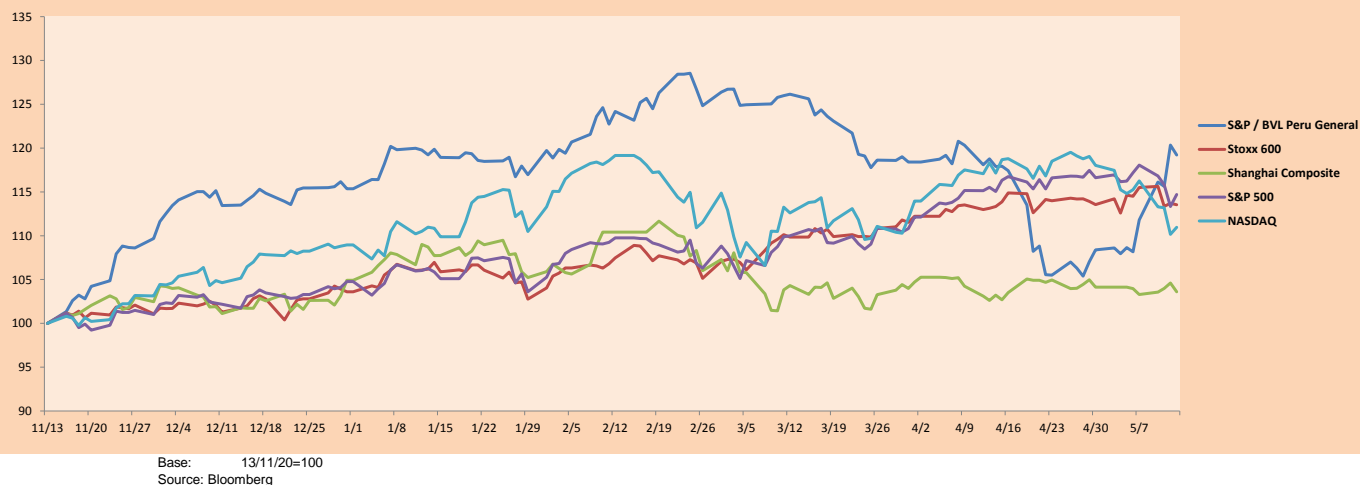
S&P/BVLConstructionTRPEN

*Legend: Variation 1D: 1 Day; 5D: 5 Days; 1M: 1 Month; YTD: Var.% 12/31/20 to date

Correlation Graph of Returns of Mining Index against Metallic Index of London (3 months)



Indices (6 months)



Capital Market Laboratory Coordinator: Economist Bruno Bellido
Collaboration: María Camarena, Alonso García, Adrian Paredes y Jairo Valverde
email: pulsobursatil@ulima.edu.pe
facebook: www.facebook.com/pulsobursatil.ul

SOVEREIGN RATING

RISK RATINGS

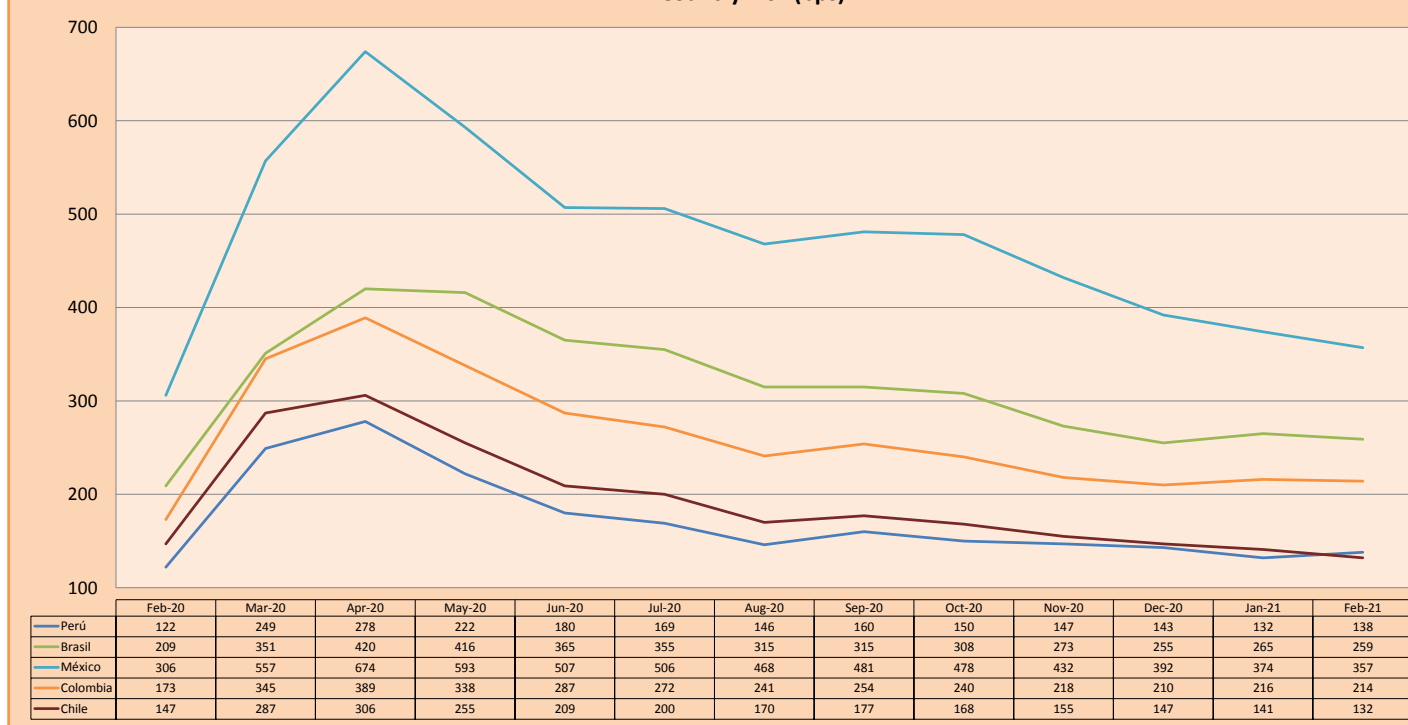
Moody's	S&P	Fitch	
Aaa	AAA	AAA	Prime
Aa1	AA+	AA+	High credit quality
Aa2	AA	AA	
Aa3	AA-	AA-	
A1	A+	A+	Medium-high grade, with low credit risk
A2	A	A	
A3	A-	A-	
Baa1	BBB+	BBB+	Moderate Credit Risk
Baa2	BBB	BBB	
Baa3	BBB-	BBB-	
Ba1	BB+	BB+	It has speculative elements and it is subject to substantial credit risk
Ba2	BB	BB	
Ba3	BB-	BB-	
B1	B+	B+	It is considered speculative and it has high credit risk
B2	B	B	
B3	B-	B-	
Caa1	CCC+		Bad credit conditions and it is subject to high credit risk
Caa2	CCC		
Caa3	CCC-		
Ca	CC		
	C		
C	D	DD	Very close to default or in default
		D	

Source: Bloomberg

Latin America Credit Rating			
Clasificadora de riesgo			
Country	Moody's	Fitch	S&P
Peru	A3	BBB+	BBB+
México	Ba2	BB-	BB-
Venezuela	C	WD	SD
Brazil	Ba2	BB-	BB-
Colombia	Baa2	BBB-	BBB-
Chile	A1	A-	A
Argentina	Ca	WD	CCC+
Panama	Baa2	BBB-	BBB

Source: Bloomberg

LATAM Country Risk (bps)



Source: BCRP

Capital Market Laboratory Coordinator: Economist Bruno Bellido
Collaboration: Maria Camarena, Alonso García, Adrian Paredes y Jairo Valverde
email: pulsobursatil@ulima.edu.pe
facebook: www.facebook.com/pulsobursatil.ul