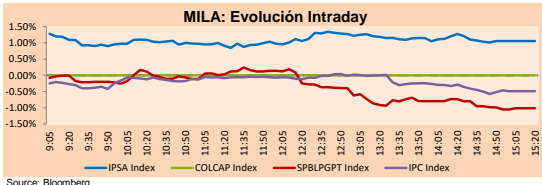


MILA

Lima, June 14, 2021

Main Indexes	Close	1 D	5 D	1 M	YTD	Cap. Burs. (US\$ bill)
▲ IPSA (Chile)	4,344.92	0.80%	5.17%	-5.02%	4.01%	122.80
▲ IGPA (Chile)	21,829.16	0.78%	4.67%	-5.32%	3.91%	146.51
▲ COLSC (Colombia)	980.86	0.56%	-0.40%	-1.58%	-7.38%	4.63
▲ COLCAP (Colombia)	1,261.61	0.11%	0.27%	-2.18%	-12.26%	77.44
▼ S&P/BVL (Perú)*	19,608.94	-1.01%	-4.34%	-10.38%	-5.83%	93.80
▼ S&P/BVL SEL (Perú)	516.80	-0.75%	-3.49%	-10.91%	-6.28%	84.41
▼ S&P/BVL LIMA 25	25,000.71	-0.79%	-1.92%	-12.62%	-0.79%	92.99
▼ IPC (México)	51,029.54	-0.50%	-0.77%	3.68%	15.80%	312.42
▲ S&P MILA 40	496.53	0.22%	0.86%	-7.68%	-7.13%	6,237.30

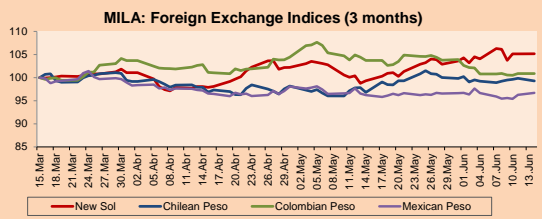
*Legend: Variation 1D: 1 day; 5D: 5 days; 1M: 1 Month; YTD: Var% 12/31/20 to date



Source: Bloomberg

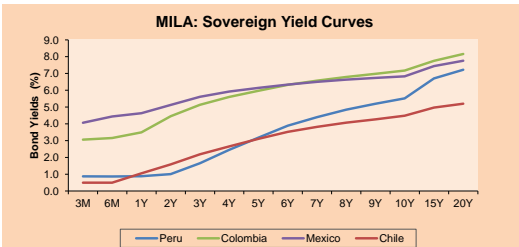
Currency	Price	1D*	5D*	30 D*	YTD*
▲ Sol (PEN)	3,895.3	0.02%	-1.07%	5.89%	7.66%
▼ Chilean Peso (CLP)	718.26	-0.59%	0.38%	2.55%	0.91%
- Colombian Peso (COP)	3,603.44	0.00%	0.10%	-2.73%	5.06%
▲ Mexican Peso (MXN)	19.96	0.44%	0.80%	0.50%	0.25%

*Legend: Variation 1D: 1 day; 5D: 5 days; 1M: 1 Month; YTD: Var% 12/31/20 to date



Base: 15/03/21=100
Source: Bloomberg

Fixed Income	Currency	Price	Bid Yield (%)	Ask Yield (%)	Duration
PERU 7.35 07/21/25	USD	122.863	1.62	1.51	3.57
PERU 4.125 08/25/27	USD	111.653	2.16	2.06	5.51
PERU 8.75 11/21/33	USD	155.966	3.28	3.20	8.75
PERU 6.55 03/14/37	USD	135.927	3.58	3.52	10.34
PERU 5.625 11/18/2050	USD	132.487	3.81	3.78	16.48
CHILE 2.25 10/30/22	USD	102.53	0.58	0.22	1.35
CHILE 3.125 01/21/26	USD	108.396	1.30	1.18	4.29
CHILE 3.625 10/30/42	USD	104.554	3.36	3.29	15.35
COLOM 11.85 03/09/28	USD	160.093	2.35	2.04	5.14
COLOM 10.375 01/28/33	USD	149.994	4.84	4.63	7.61
COLOM 7.375 09/18/37	USD	132.081	4.60	4.52	10.41
COLOM 6.125 01/18/41	USD	118.978	4.67	4.61	12.08
MEX 4 10/02/23	USD	118.978	4.668	4.611	12.08
MEX5.55 01/45	USD	120.305	4.21	4.17	14.07



Source: Bloomberg

Equity	Exchange	Currency	Price	▲ %
Largest gains				
PARQUE ARAUCO	Chile	CLP	983.50	3.52
SONDA SA	Chile	CLP	419.09	3.48
EMPRESAS COPEC	Chile	CLP	7,450.00	3.37
CAP	Chile	CLP	13,241.00	3.12
ENGIE ENERGIA CH	Chile	CLP	644.00	3.04
Per Turnover	Exchange	Amount (US\$)		
GRUPO F BANORT-O	Mexico	23,885,751		
WALMART DE MEXIC	Mexico	23,149,913		
GRUPO MEXICO-B	Mexico	17,576,394		
FALABELLA SA	Chile	16,236,488		
ENEL AMERICAS SA	Chile	15,773,564		

Largest losses	Exchange	Currency	Price	▼ %
VOLCAN CIA MIN-B	Peru	PEN	0.57	-5.00
CEMEX SAB-CPO	Mexico	MXN	16.10	-3.13
CREDICORP LTD	Peru	USD	122.29	-2.17
SOUTHERN COPPER	Peru	USD	65.60	-2.09
SOQUIMICH-B	Chile	CLP	33,873.00	-2.06
Per Volume	Exchange	Volume		
ITAU CORPBANCA	Chile	1,100,349,532		
BANCO SANTANDER	Chile	408,331,919		
BANCO DE CHILE	Chile	239,838,412		
ENEL CHILE SA	Chile	145,973,668		
ENEL AMERICAS SA	Chile	125,699,986		

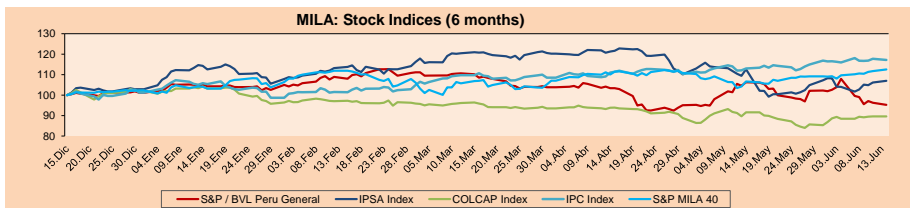
MILA

Peru: The BVL General Index ended today's session with a negative result of -1.01%. The index maintains a negative annual cumulative trend of -5.83% in local currency, while the dollar-adjusted performance declined to -12.53%. Then, the S&P / BVL Peru SEL varied by -1.79% while the S&P / BVL LIMA 25 by -0.79%. The spot PEN reached S / 3.9374. Headline: Sol extends 3-day decline as election uncertainty persists

Chile: The IPSA index ended the day with a positive return of +0.80%. The most benefited sectors of the day were Information Technology (+3.48%) and Energy (+3.37%). The best performing stocks were Plaza SA (+4.82%) and Ripley Corporación SA (+4.57%). Headline: Chile to update bond issuance plans next month

Colombia: The COLCAP index did not open operations due to a national holiday

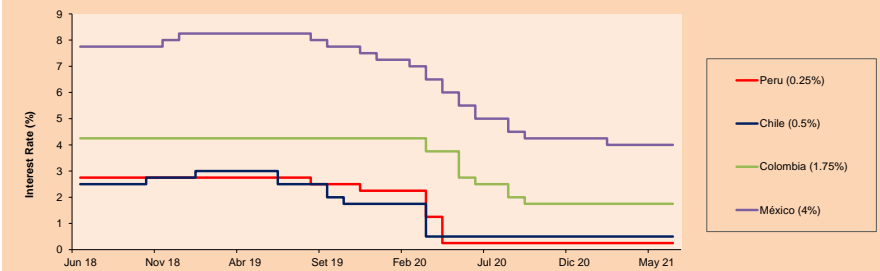
Mexico: The IPC index closed the day with a negative return of -0.50%. The least benefited sectors of the day were Consumer Products (-1.33%) and Materials (-1.30%). The worst performing stocks were Cemex SAB de CV (-3.13%) and Qualitas Controladora SAB de CV (-2.72%). Headline: COVID Deaths in Mexico increased to a total of 230,185



Base: 16/12/20=100
Source: Bloomberg

ETFs	Curr.	Close	1D	5D	30 D	YTD	Exchange
▲ iShares MSCI All Peru Caped Index Fund	USD	30.05	-2.75%	-5.44%	-15.07%	-13.35%	NYSE Arca
▲ iShares MSCI All Chile Caped Index Fund	USD	29.91	1.53%	3.10%	-8.11%	-0.99%	Cboe BZX
▼ Global X MSCI Colombia	USD	10.27	-1.25%	-1.06%	0.69%	-9.60%	NYSE Arca
▲ iShares MSCI Mexico Capped	USD	48.97	-0.75%	-1.94%	3.95%	13.91%	NYSE Arca
▲ iShares MSCI Emerging Markets	USD	55.44	0.27%	-0.48%	4.70%	7.30%	NYSE Arca
▲ Vanguard FTSE Emerging Markets	USD	54.88	0.40%	0.16%	5.95%	9.52%	NYSE Arca
▲ iShares Core MSCI Emerging Markets	USD	67.32	0.38%	-0.62%	4.86%	8.51%	NYSE Arca
▲ iShares JP Moran Emerging Markets Bonds	USD	64.95	0.34%	-0.25%	3.28%	6.34%	Cboe BZX
▼ Morgan Stanley Emerging Markets Domestic	USD	6.25	-0.64%	-0.16%	2.12%	-0.64%	New York

MILA: Policy Rate



Source: Bloomberg

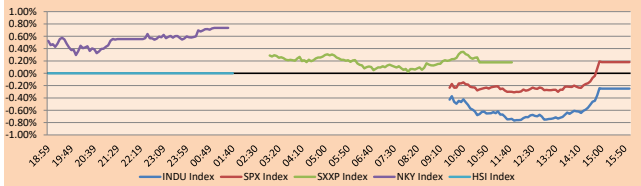
Capital Market Laboratory Coordinator: Economist Bruno Bellido
Collaboration: María Camarena, Alonso García, Adrian Paredes y Jairo Valverde
email: pulsobursatil@ulima.edu.pe
facebook: www.facebook.com/pulsobursatil.ul

WORLD

Main Indices	Close	1 D*	5 D*	1 M*	YTD*	Market Cap. (US\$ Mill.)
▼ Dow Jones (USA)	34,993.75	-0.25%	-0.68%	0.03%	12.37%	10,309,782
▲ Standard & Poor's 500 (EQU)	4,255.15	0.18%	0.68%	1.95%	13.29%	37,595,538
▲ NASDAQ Composite (USA)	14,174.14	0.74%	2.11%	5.54%	9.98%	23,690,425
▲ Stoxx EUROPE 600 (Europe)	458.32	0.18%	1.05%	3.57%	14.86%	10,407,618
▼ DAX (Germany)	15,673.64	-0.13%	-0.02%	1.67%	14.25%	1,161,298
▼ FTSE 100 (United Kingdom)	7,146.68	0.18%	0.98%	1.46%	10.62%	1,461,443
▲ CAC 40 (France)	6,616.35	0.24%	1.11%	3.62%	19.18%	1,806,198
▲ IBEX 35 (Spain)	9,281.10	0.83%	1.28%	1.48%	14.95%	513,301
▲ MSCI AC Asia Pacific Index	209.92	0.05%	-0.15%	4.54%	5.00%	27,246,240
▲ HANG SENG (Hong Kong)	28,842.13	0.30%	-0.26%	2.28%	5.27%	4,491,759
▼ SHANGHAI SE Comp. (China)	3,589.75	-0.59%	-0.06%	2.13%	2.63%	6,977,990
▲ NIKKEI 225 (Japan)	29,161.80	0.74%	0.49%	4.94%	7.38%	3,991,047
▲ S&P / ASX 200 (Australia)	7,312.33	0.14%	0.23%	5.21%	12.03%	1,793,877
▼ KOSPI (South Korea)	3,252.13	-0.50%	-0.77%	3.29%	13.35%	1,956,710

*Legend: Variation 1D: 1 Day; 5D: 5 Days; 1M: 1 Month; YTD: Var. % 12/31/20 to date

Global Markets: Intraday Evolution (var %)

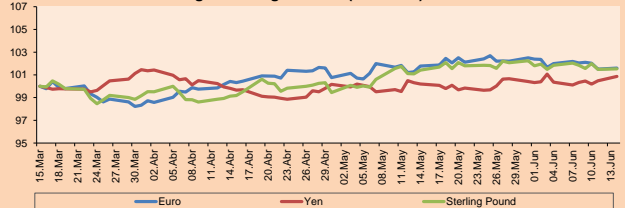


Source: Bloomberg

Currency	Price	1 D*	5 D*	1 M*	YTD*
▲ Euro	1,212.00	0.09%	-0.57%	-0.17%	-0.79%
▲ Yen	110.0700	0.37%	0.75%	0.66%	6.51%
▲ Sterling Pound	1,411.12	0.04%	-0.50%	0.11%	3.23%
- Dollar	6,398.7	0.00%	0.02%	-0.60%	-1.97%
▲ Hong Kong Dollar	7,761.8	0.00%	0.03%	-0.08%	0.11%
▼ Brazilian Real	5,062.0	-1.10%	0.32%	-4.01%	-2.63%
▼ Argentine Peso	95,252.0	0.13%	0.30%	1.29%	13.20%

*Legend: Variation 1D: 1 Day; 5D: 5 Days; 1M: 1 Month; YTD: Var. % 12/31/20 to date

Foreign Exchange Indices (3 months)

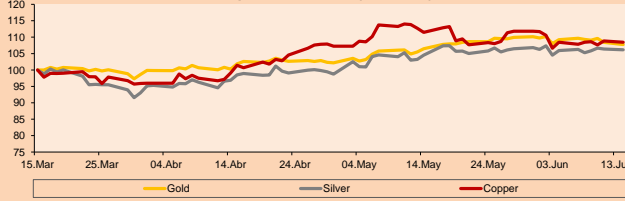


Base: 15/03/21=100
Source: Bloomberg

Commodities	Close	1 D*	5 D*	1 M*	YTD*
▼ Oro (US\$ Oz. T) (LME)	1,866.18	-0.60%	-1.74%	1.23%	-1.70%
▼ Plata (US\$ Oz. T) (LME)	27.86	-0.22%	-0.12%	1.58%	5.51%
▲ Cobre (US\$ TM) (LME)	9,938.25	-0.37%	0.58%	-2.70%	28.25%
▲ Zinc (US\$ TM) (LME)	3,027.75	0.02%	1.69%	3.70%	10.93%
▼ Petróleo WTI (US\$ Barril) (NYM)	70.88	-0.04%	2.38%	8.45%	48.08%
▼ Estiércol (US\$ TM) (LME)	32,856.00	-0.12%	3.35%	4.97%	59.93%
▼ Plomo (US\$ TM) (LME)	2,192.25	-0.40%	2.23%	2.55%	10.96%
▲ Azúcar #11 (US\$ Libra) (NYB-ICE)	17.39	-1.58%	-0.46%	1.93%	23.86%
▲ Cacao (US\$ TM) (NYB-ICE)	2,447.00	1.87%	1.79%	-2.67%	-2.35%
▼ Café Arábica (US\$ TM) (NYB-ICE)	156.20	-2.13%	-3.70%	6.29%	17.18%

*Legend: Variación 1D: 1 Día; 5D: 5 Días; 1M: 1 Mes; YTD: Var. % 31/12/20 a la fecha

Principal Metals Index (3 months)



Base: 15/03/21=100
Source: Bloomberg

Equity

Germany (Stocks from DAX Index)

Largest gains	Curr.	Price	▲%	Exchange	Largest losses	Curr.	Price	▼%	Exchange
ENR GY	EUR	25.43	4.26	Xetra	DHER GY	EUR	111.15	0.09	Xetra
IFX GY	EUR	34.215	0.72	Xetra	BAYN GY	EUR	53.21	-0.49	Xetra
SIE GY	EUR	135.74	-0.72	Xetra	EOAN GY	EUR	10.168	0.89	Xetra
VOW3 GY	EUR	230.1	-1.37	Xetra	BAS GY	EUR	67.24	-0.40	Xetra

Europe (Stocks from STOXX EUROPE 600)

Largest gains	Curr.	Price	▲%	Exchange	Largest losses	Curr.	Price	▼%	Exchange
ROR LN	Gbp	337.2	-1.11	London	NHY NO	NOK	54.32	0.41	Oslo
EMG LN	Gbp	187.35	1.35	London	EPIA SS	SEK	180.05	-0.52	Stockholm
AMS SQ	EUR	65.5	-0.30	Soc Bol SIBE	INVEV SS	SEK	195.8	-0.05	Stockholm
TRYG DC	DKK	152	1.13	Copenhagen	SALM NO	NOK	601	-0.10	Oslo

Global Overview:

United States:

The main US indices closed the day with mixed returns as investors are anxious about the future decision of the FED on the purchase of assets to control the inflationary level. The DOW JONES -0.25% closed lower with more than half of its values closing in negative territory, the biggest losses were in the Materials -1.53%, Finance -1.14% and Industrial -0.81% sectors. On the other hand, the S&P 500 index +0.18 closed with positive returns thanks to the fact that the gains in the Information Technology +1.04% and Communication Services +0.74% sectors offset the losses generated by the other sectors. This is also reflected in the NASDAQ +0.74% which closed higher after strong gains in tech stocks. In the case of individual stocks, we have that the earnings were led by Resmed Inc. +6.00% and Marketmax Holdings Inc. +3.14%, while the losses are led by Baker Hughes Co. -4.52% and Mosaic Co. -4.22%. Thus, DOW JONES -0.25%; S&P 500 +0.18%; NASDAQ +0.74% ended the day with mixed returns.

Europe:

The main European indices ended the session with positive performances, due to the positive results of energy stocks. Eurozone markets closed the day Monday with new records. The pan-European STOXX 600 rose to a new closing high of 458.32 points, even touching 460.51 earlier in the session. Energy stocks were the best performers today, rising 2% as oil prices climbed to a more than two-year high on expectations of strong demand for the commodity. In the UK, the FTSE 100 climbed to its highest level since February 2020. Investors expect Prime Minister Boris Johnson to announce an extension of COVID-19 restrictions as his country struggles with rising cases of the Indian variant. In equities, Reuters highlights TeamViewer +5.85%, after announcing a new partnership with SAP. In turn, Philips -4.16%, after recalling some CPAP breathing devices and ventilators worldwide because it produced toxic foam. Thus, FTSE 100 +0.18%, DAX -0.13%, CAC 40 +0.24% and STOXX 600 +0.18% closed the day with positive returns.

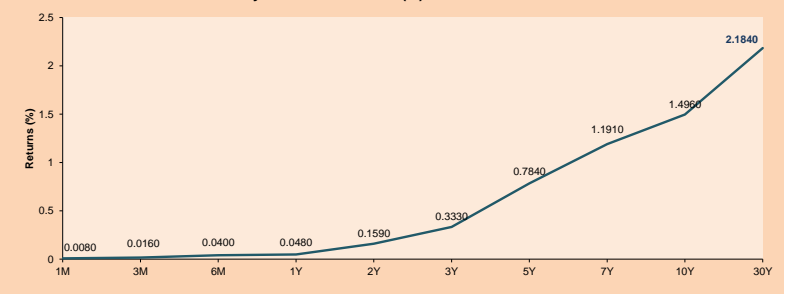
Asia:

The main Asian indices obtained positive returns, thanks to the increase of hopes in the global recovery, however, investors continue to await the political meeting of the US Federal Reserve. The markets of China, Hong Kong and Australia are closed for different holidays. On the other hand, Japanese stocks ended higher, due to cyclical increases in tire manufacturers and carriers, which were driven by the global recovery. Additionally, Toshiba rose 2.7% after the company said two of its directors will retire amid its governance crisis. On the other hand, South Korean shares ended slightly higher, due to the momentum of net foreign sellers, however, their rise was mitigated by investors waiting for the FED meeting. Finally, Indian shares end slightly higher, despite the fall of Adani group shares, due to the freezing of accounts of three foreign funds that have an investment of Rs 435 billion in their companies. Likewise, the fall of rupees is expected due to the increase in COVID19 cases in the country, affecting its expected growth. In this way, KOSPI +0.09%, Nikkei +0.74%, NIFTY 50 +0.08% ended the session with positive returns.

ETFs

ETFs	Curr.	Close	1D	5D	30 D	YTD	Exchange
SPDR S&P 500 ETF TRUST	USD	425.26	0.22%	0.73%	2.06%	13.74%	NYSE Arca
ISHARES MSCI EMERGING MARKET	USD	55.44	0.27%	-0.48%	4.70%	7.30%	NYSE Arca
ISHARES IBOXX HIGH YLD CORP	USD	87.54	-0.09%	0.27%	0.38%	0.27%	NYSE Arca
FINANCIAL SELECT SECTOR SPDR	USD	37.17	-1.04%	-2.75%	-1.87%	26.09%	NYSE Arca
VANECK GOLD MINERS	USD	38.03	-0.65%	-1.60%	0.50%	5.58%	NYSE Arca
ISHARES RUSSELL 2000 ETF	USD	231.02	-0.23%	0.25%	4.52%	17.83%	NYSE Arca
SPDR GOLD SHARES	USD	174.71	-0.59%	-1.78%	1.17%	-2.05%	NYSE Arca
ISHARES 20+ YEAR TREASURY BO	USD	141.22	-0.77%	1.25%	3.02%	-10.47%	NASDAQ GM
INVESCO QQQ TRUST SERIES 1	USD	344.51	0.96%	2.35%	5.55%	9.81%	NASDAQ GM
ISHARES NASDAQ BIOTECHNOLOGY	USD	161.84	-0.17%	2.25%	8.12%	6.83%	NASDAQ GM
ENERGY SELECT SECTOR SPDR	USD	55.14	-0.43%	-0.67%	3.08%	45.49%	NYSE Arca
PROSHARES ULTRA VIX ST FUTUR	USD	30.48	1.46%	-7.83%	-23.28%	-71.38%	Close BXZ
UNITED STATES OIL FUND LP	USD	48.32	0.52%	2.22%	8.07%	46.38%	NYSE Arca
ISHARES MSCI BRAZIL ETF	USD	40.84	1.34%	-2.41%	8.94%	10.17%	NYSE Arca
SPDR S&P OIL & GAS EXP & PR	USD	96.29	-1.10%	-1.09%	11.50%	64.60%	NYSE Arca
UTILITIES SELECT SECTOR SPDR	USD	66.25	0.21%	1.13%	0.52%	5.66%	NYSE Arca
ISHARES US REAL ESTATE ETF	USD	104.91	0.44%	1.06%	7.79%	22.49%	NYSE Arca
SPDR S&P BIOTECH ETF	USD	136.68	0.63%	3.07%	7.69%	-2.91%	NYSE Arca
ISHARES RUSSELL INVESTMENT GRA	USD	133.18	-0.37%	0.91%	1.63%	-3.58%	NYSE Arca
ISHARES JP MORGAN USD EMERGI	USD	112.22	-0.60%	0.41%	0.89%	-3.18%	NASDAQ GM
REAL ESTATE SELECT SECT SPDR	USD	45.70	0.57%	1.60%	8.94%	25.00%	NYSE Arca
ISHARES CHINA LARGE-CAP ETF	USD	46.21	0.30%	-0.19%	4.52%	-0.47%	NYSE Arca
CONSUMER STAPLES SPDR	USD	70.90	-0.06%	-0.70%	-0.01%	5.11%	NYSE Arca
VANECK JR GOLD MINERS	USD	52.99	-0.41%	-1.16%	3.69%	-2.30%	NYSE Arca
SPDR BBO HIGH YIELD BND	USD	109.41	-0.07%	0.31%	0.54%	0.43%	NYSE Arca
VANGUARD REAL ESTATE ETF	USD	105.49	0.35%	1.68%	8.68%	24.21%	NYSE Arca
GRAYSCALE BITCOIN TRUST BTC	USD	33.08	7.47%	11.88%	-16.10%	3.37%	OTC US

USA Treasury Bonds Yield Curve (%)



Source: Bloomberg

Capital Market Laboratory Coordinator: Economist Bruno Bellido
Collaboration: Maria Camarena, Alonso García, Adrian Paredes y Jairo Valverde
email: pulsobursatil@ulima.edu.pe
facebook: www.facebook.com/pulsobursatil.ull

LIMA

Stocks

Ticker	Currency	Price	1D*	5D*	30D*	YTD*	Frequency	Volume (US\$)	Beta	Dividend Yield (%)	Price Earning	Market Cap. (M US\$)	Economic Sector*	Index Weight
▲ ALICORC1 PE**	S/.	6.50	0.56%	-0.40%	-1.58%	-7.38%	100.00%	104,603	1.01	3.85	12.26	1,423.27	Industrial	3.53%
▼ ATACOCB1 PE**	S/.	0.10	-3.85%	-9.09%	-27.54%	-27.54%	65.00%	3,002	1.19	0.00	-	24.26	Mining	1.02%
▲ BACKUS1 PE**	S/.	17.90	1.13%	-0.61%	-11.91%	-11.17%	95.00%	9,843	0.73	7.19	8.64	7,364.28	Industrial	0.82%
▼ BAP PE**	US\$	122.29	-2.17%	-8.74%	-16.24%	-23.85%	100.00%	823,958	1.15	0.00	-	11,542.01	Diverse	5.82%
▼ BVN PE**	US\$	10.70	-1.02%	-5.39%	-8.47%	-10.83%	100.00%	61,538	1.10	0.00	-	2,944.23	Mining	5.88%
▼ CASAGRC1 PE**	S/.	3.95	-1.25%	-5.73%	-36.19%	-16.84%	90.00%	3,861	1.27	18.93	2.91	85.42	Agricultural	1.31%
- BVVAC1 PE**	S/.	1.98	0.00%	7.03%	-11.21%	-8.76%	90.00%	2,516	1.10	0.00	28.27	3,318.81	Finance	2.85%
- CORARE1 PE**	S/.	0.98	0.00%	5.38%	-20.33%	10.11%	100.00%	10,710	1.33	20.76	3.14	377.15	Industrial	1.72%
▼ CPACASC1 PE**	S/.	6.03	-0.33%	7.10%	3.08%	13.77%	100.00%	339,569	0.73	3.81	43.07	713.03	Industrial	2.38%
▼ CVERDEC1 PE**	US\$	16.10	-3.59%	-11.68%	-32.92%	-23.04%	100.00%	434,942	1.47	3.55	9.22	5,635.90	Mining	5.25%
▼ ENGEPEC1 PE**	S/.	2.03	-0.98%	-0.98%	-14.71%	1.50%	90.00%	42,855	0.69	9.73	12.41	1,479.39	Public Services	1.44%
- ENDISPC1**	S/.	4.15	0.00%	-1.19%	-20.19%	-23.15%	75.00%	1,117	0.77	0.00	9.34	680.32	Public Services	0.98%
▲ FERREYC1 PE**	S/.	1.52	0.66%	1.33%	-23.62%	-12.64%	100.00%	36,962	1.11	11.98	6.72	380.73	Diverse	4.90%
▲ AENZAC1 PE**	S/.	1.07	-2.73%	-14.40%	-18.94%	-38.51%	100.00%	148,477	0.83	0.00	-	239.51	Diverse	4.05%
▼ IFS PE**	US\$	25.70	-0.31%	-5.72%	-14.33%	-16.94%	95.00%	78,793	1.21	3.00	15.08	2,967.01	Diverse	7.22%
▲ INRETC1 PE**	US\$	35.29	1.41%	1.15%	-13.93%	-9.97%	100.00%	166,886	0.83	1.93	75.29	3,628.07	Diverse	5.28%
- LUSURC1 PE**	S/.	11.71	0.00%	-2.34%	-6.32%	-54.08%	85.00%	9,771	0.73	0.00	12.69	1,463.87	Public Services	1.81%
- MINSUR1 PE**	S/.	2.64	0.00%	1.54%	-18.01%	42.70%	95.00%	81,497	0.97	12.65	5.16	1,953.93	Mining	3.09%
▼ PML PE**	US\$	0.10	-2.91%	-3.85%	-25.93%	-5.66%	90.00%	22,442	1.42	0.00	-	26.44	Mining	2.12%
▲ RELAPAC1 PE**	S/.	0.13	1.63%	15.74%	-1.57%	81.16%	100.00%	15,616	1.15	0.00	3.26	266.96	Industrial	2.12%
▲ SCCO PE**	US\$	65.60	-2.09%	-3.81%	-13.11%	-0.46%	95.00%	31,384	0.95	3.35	22.79	50,713.61	Mining	2.14%
- SIDERC1 PE**	S/.	0.97	0.00%	10.23%	-11.01%	14.12%	100.00%	3,735	0.93	23.14	4.85	221.11	Industrial	1.43%
▼ TV PE**	US\$	0.19	-2.06%	-2.06%	-4.04%	29.25%	100.00%	82,840	1.22	0.00	-	187.93	Mining	2.93%
▼ UNACEMC1 PE**	S/.	1.29	-1.53%	-1.53%	-19.38%	-16.77%	100.00%	57,965	1.17	2.02	10.19	602.11	Industrial	3.00%
▼ VOLCABC1 PE**	S/.	0.57	-5.00%	-8.06%	-24.00%	9.62%	100.00%	133,380	1.56	0.00	-	596.53	Mining	5.90%
- NEXAPEC1 PE**	S/.	3.30	0.00%	6.45%	-7.04%	16.61%	80.00%	17,215	1.12	0.00	25.33	1,119.54	Mining	1.56%

Quantity of shares: 26
Source: Bloomberg, Economatika
* Bloomberg Industry Classification System
** PER is used in the stock market and original currency of the instrument
*Legend: Variation 1D: 1 Day; 5D: 5 Days, 1M: 1 Month; YTD: Var.% 12/31/20 to date

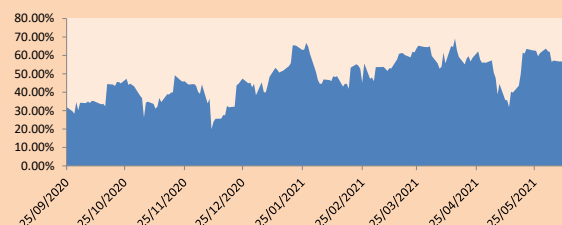
Sectorial Indices

	Close	1D*	5D*	30D*	YTD*	Beta
▼ S&P/BVLMining	414.58	-1.84%	-5.21%	-8.43%	6.32%	0.95
▲ S&P/BVLConsumer	1,048.32	1.70%	4.86%	-10.48%	-3.70%	0.79
▼ S&P/BVLIndustrials	176.01	-0.56%	-0.02%	-13.96%	-7.64%	0.90
▼ S&P/BVLFinancials	861.98	-1.87%	-8.88%	-11.03%	-16.63%	1.11
▼ S&P/BVLConstruction	191.39	-1.06%	-0.82%	-9.87%	-8.48%	0.83
▼ S&P/BVLPublicSvcs	530.36	-0.33%	-1.57%	-12.03%	-13.64%	0.44
▼ S&P/BVLElectricUtil	517.76	-0.33%	-1.57%	-12.03%	-13.64%	0.44

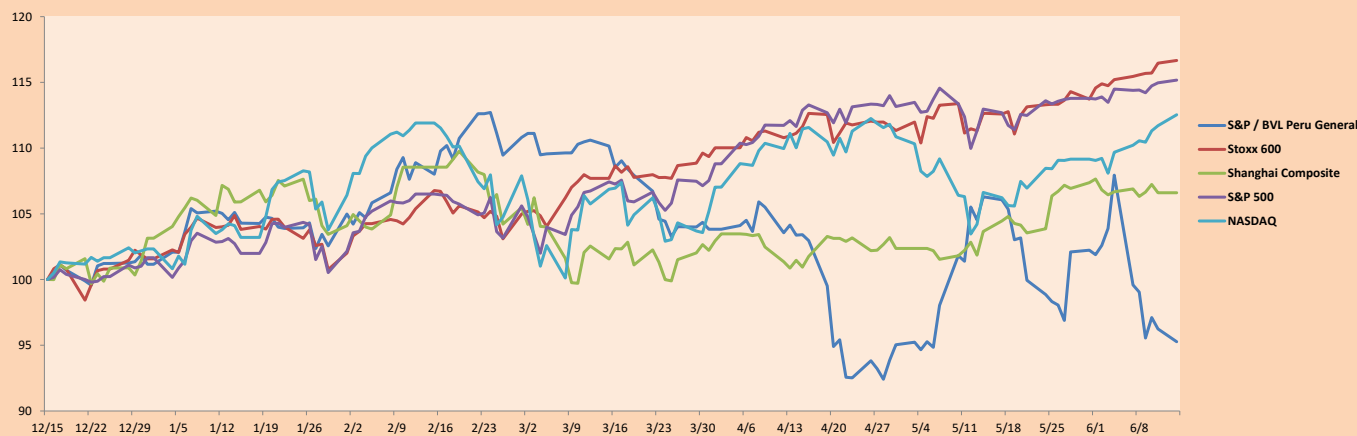
S&P/BVLConstructionTRPEN

*Legend: Variation 1D: 1 Day; 5D: 5 Days, 1M: 1 Month; YTD: Var.% 12/31/20 to date

Correlation Graph of Returns of Mining Index against Metallic Index of London (3 months)



Indices (6 months)



Base: 15/12/20=100
Source: Bloomberg

Capital Market Laboratory Coordinator: Economist Bruno Bellido
Collaboration: María Camarena, Alonso García, Adrian Paredes y Jairo Valverde
email: pulsobursatil@ulima.edu.pe
facebook: www.facebook.com/pulsobursatil.ul

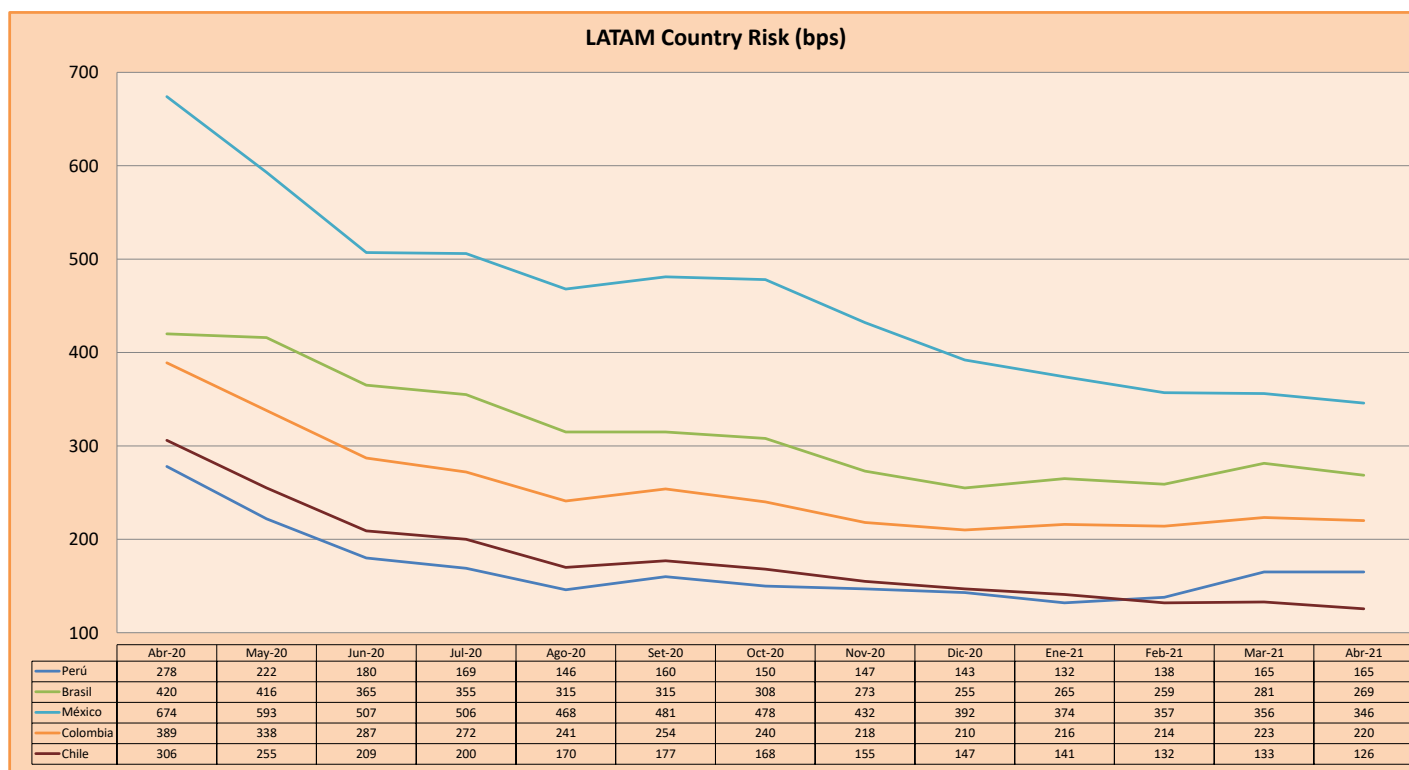
SOVEREIGN RATING

RISK RATINGS			
Moody's	S&P	Fitch	
Aaa	AAA	AAA	Prime
Aa1	AA+	AA+	High credit quality
Aa2	AA	AA	
Aa3	AA-	AA-	
A1	A+	A+	Medium-high grade, with low credit risk
A2	A	A	
A3	A-	A-	
Baa1	BBB+	BBB+	Moderate Credit Risk
Baa2	BBB	BBB	
Baa3	BBB-	BBB-	
Ba1	BB+	BB+	It has speculative elements and it is subject to substantial credit risk
Ba2	BB	BB	
Ba3	BB-	BB-	
B1	B+	B+	It is considered speculative and it has high credit risk
B2	B	B	
B3	B-	B-	
Caa1	CCC+		Bad credit conditions and it is subject to high credit risk
Caa2	CCC		
Caa3	CCC-	CCC	
Ca	C		Very close to default or in default
		DDD	
C	D	DD D	

Source: Bloomberg

Latin America Credit Rating			
Clasificadora de riesgo			
Country	Moody's	Fitch	S&P
Peru	A3	BBB+	BBB+
México	Ba2	BB-	BB-
Venezuela	C	WD	SD
Brazil	Ba2	BB-	BB-
Colombia	Baa2	BBB-	BB+
Chile	A1	A-	A
Argentine	Ca	WD	CCC+
Panama	Baa2	BBB-	BBB

Source: Bloomberg



Source: BCRP

Capital Market Laboratory Coordinator: Economist Bruno Bellido
Collaboration: Maria Camarena, Alonso García, Adrian Paredes y Jairo Valverde
email: pulsobursatil@ulima.edu.pe
facebook: www.facebook.com/pulsobursatil.ul