

# PULSO BURSÁTIL

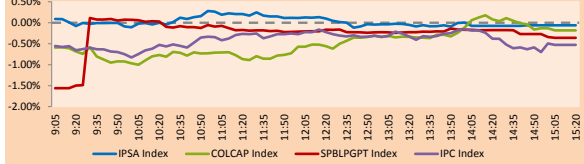
Lima, October 17, 2018

## MILA

Main Indices	Close	1 D	5 D	1 M	YTD	Market Cap. (US\$ bill)
▼ IPSA (Chile)	5,141.19	-0.06%	-3.14%	-3.98%	-7.61%	166.23
▼ IGPA (Chile)	26,223.97	-0.11%	-2.80%	-3.25%	-6.28%	223.96
▲ IGBC (Colombia)	12,601.01	1.25%	0.75%	1.96%	9.78%	114.05
▼ COLCAP (Colombia)	1,476.33	-0.18%	-1.42%	-2.21%	-2.47%	117.59
▼ S&P/BVL (Perú)*	19,290.61	-0.36%	0.41%	2.15%	-3.42%	107.53
▼ S&P/BVL SEL (Perú)	353.94	-0.54%	0.63%	2.31%	-3.83%	83.21
▼ S&P/BVL LIMA 25	26,198.73	-0.84%	-1.46%	0.19%	-14.85%	89.57
▼ IPC (México)	47,887.95	-0.63%	-0.52%	-3.57%	-2.97%	306.31
▼ S&P MILA 40	653.13	-0.60%	1.16%	-1.12%	-10.42%	296.09

\* Market Cap. Of the last price Legend: Variation 1D: 1 day; 5D: 5 days; 1M: 1 Month; YTD: Var%12/31/17 to date

MILA: Evolución Intraday

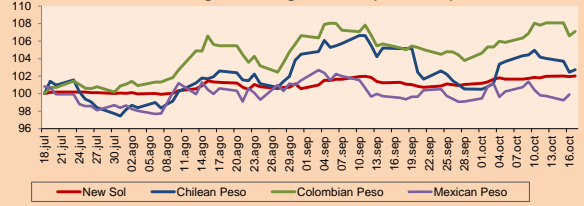


Source: Bloomberg

Currency	Price	1D*	5D*	30 D*	YTD*
▲ New Sol (PEN)	3,3353	0.04%	0.22%	0.72%	3.01%
▲ Chilean Peso (CLP)	671.26	0.29%	-2.11%	-2.29%	9.07%
▲ Colombian Peso (COP)	3,067.10	0.48%	-0.87%	1.79%	2.69%
▲ Mexican Peso (MXN)	18.88	0.67%	-1.45%	0.20%	-3.97%

\* Legend: Variation 1D: 1 day; 5D: 5 days; 1M: 1 Month; YTD: Var%12/31/17 to date

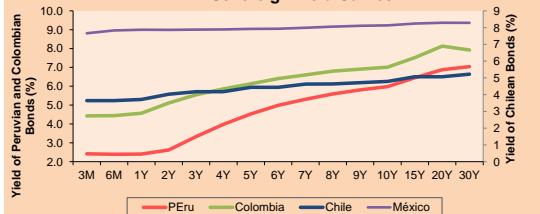
MILA: Foreign Exchange Indices (3 months)



Base: 18/07/18=100 Source: Bloomberg

Instrument	Currency	Price	Bid Yield (%)	Ask Yield (%)	Duration
PERU 4.125 08/25/2027	USD	101.447	3.95	3.91	7.35
PERU 7.125 03/30/19	USD	102.192	2.25	2.08	0.44
PERU 7.35 07/21/25	USD	121.301	3.78	3.72	5.42
PERU 8.75 11/21/33	USD	144.931	4.61	4.57	9.36
PERU 6.55 03/14/37	USD	123.733	4.63	4.61	11.10
PERU 5.625 11/18/2050	USD	114.2	4.77	4.74	15.63
CHILE 2.25 10/30/22	USD	95.594	3.48	3.38	3.77
CHILE 3.875 08/05/20	USD	101.466	3.11	2.95	1.72
CHILE 3.625 10/30/2042	USD	90.612	4.27	4.24	15.28
COLOM 11.75 02/25/20	USD	111.131	3.33	3.17	1.26
COLOM 11.85 03/09/28	USD	153.34	4.78	4.71	6.42
COLOM 10.375 01/28/33	USD	151.516	5.21	5.21	8.63
COLOM 7.375 09/18/37	USD	123.301	5.41	5.38	11.02
COLOM 6.125 01/18/41	USD	110.059	5.36	5.33	12.45
MEX 4 10/02/23	USD	100.141	3.99	3.94	4.46
MEX5.5 01/14/5	USD	103.385	5.316	5.302	13.84

MILA: Sovereign Yield Curves



Source: Bloomberg

## Equity

Largest gains	Exchange	Amt.	Price	▲%
ENLASA	Santia.	CLP	750.00	7.14
CRUZADOS	Santia.	CLP	150.00	7.14
CAMANCHACA	Santia.	CLP	70.00	6.06
CAP	Santia.	CLP	7311.40	4.42

Per Turnover	Exchange	Amount (US\$)
ECOPETROL	Colomb.	18,397,320
SQM-B	Santia.	11,294,177
BSANTANDER	Santia.	10,571,174
FALABELLA	Santia.	7,351,342
CHILE	Santia.	6,371,781

Largest losses	Exchange	Amt.	Price	▼%
CALICHERAA	Santia.	CLP	510.00	-19.67
UNITEX1	Lima	PEN	0.22	-4.35
SCHWAGER	Santia.	CLP	0.58	-4.17
PML	Lima	USD	0.21	-4.11

Per Volume	Exchange	Volume
BSANTANDER	Santia.	136,987,560
CHILE	Santia.	43,679,065
VAPORES	Santia.	28,898,561
ECOPETROL	Colomb.	14,355,175
CRUZADOS	Santia.	7,671,228

## MILA

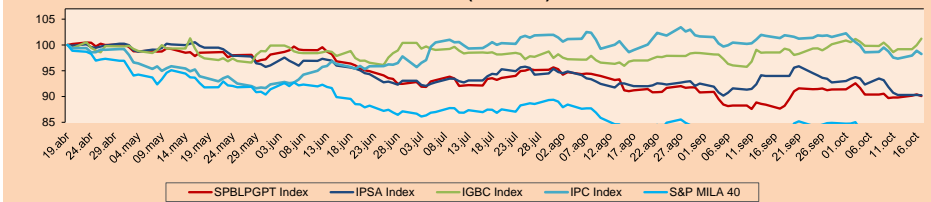
**Peru:** The General Index of the BVL of Peru ended today's session with a negative result of -0.36%. The index maintains an accumulated positive annual trend of -3.42% in local currency, while the adjusted yield in dollars amounts to -6.25%. Then, the S&P/BVL Peru SEL obtained a negative yield of -0.54%, while the S&P/BVL LIMA 25 decreased by -0.84%. The spot PEN reached S/3.3353. **Headline:** The scape of the former Supreme Judge of the Nation was confirmed despite having an order to prevent him from leaving the country.

**Chile:** The IPSA index ended the day with a negative return of -0.06%. The sectors of the index with the most negative results were Energy (-1.29%) and Industrial (-0.99%). On the other hand, the values with the lowest results were Salfacorp SA (-2.30%) and Compañía Sud Americana de Vapores SA (-2.07%).

**Colombia:** The COLCAP index closed the session with negative results of -0.18%. The sectors with downward results were Telecommunications Services (-2.26%) and Finance (-0.85%). In addition, the shares with the worst yields were Constructora Concreto SA (-2.94%) and Empresa de Telecomunicaciones (-2.26%).

**Mexico:** Mexico's IPC index closed today's session with a negative yield of -0.63%. The sectors of the index that generated the most negative results were Telecommunications Services (-2.93%) and Materials (-2.14%). Finally, the stocks with the lowest yields were America Movil SAB de CV (-4.24%) and Industrias Peñoles SAB (-3.24%).

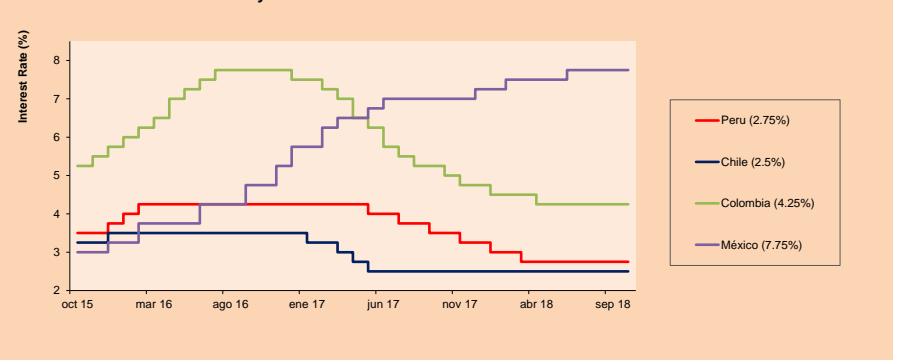
MILA: Stock Indices (6 months)



Base: 20/04/18=100 Source: Bloomberg

ETFs	Curr.	Close	1D	5D	30 D	YTD	Exchange
▼ iShares MSCI All Peru Caped Index Fund	USD	36.54	-0.54%	1.30%	3.45%	-10.83%	NYSE Arca
▼ iShares MSCI Chile Capped	USD	43.25	-1.05%	1.67%	-3.16%	-17.08%	Cboe BZX
▼ Global X MSCI Colombia	USD	13.36	-0.52%	1.14%	-1.98%	-7.46%	NYSE Arca
▼ iShares MSCI Mexico Capped	USD	49.15	-1.29%	1.01%	-3.42%	-0.28%	NYSE Arca
▼ iShares MSCI Emerging Markets	USD	40.36	-1.22%	2.07%	-2.93%	-14.35%	NYSE Arca
▼ Vanguard FTSE Emerging Markets	USD	38.75	-1.20%	1.71%	-4.13%	-15.00%	NYSE Arca
▼ iShares Core MSCI Emerging Markets	USD	48.71	-1.22%	1.84%	-3.28%	-14.39%	NYSE Arca
▼ iShares JP Morgan Emerging Markets Bonds	USD	55.96	-0.62%	1.05%	-3.08%	-7.90%	Cboe BZX
▲ Morgan Stanley Emerging Markets Domestic	USD	6.71	0.30%	3.39%	2.91%	-12.86%	New York

MILA: Policy Rate



Source: Bloomberg



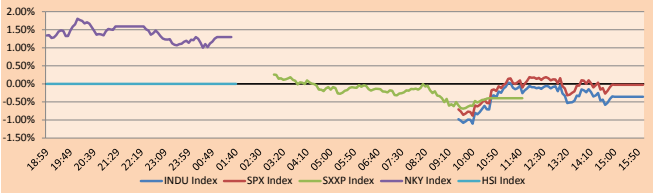
# PULSO BURSÁTIL

## WORLD

Main Indices	Close	1 D*	5 D*	1 M*	YTD*	Market Cap. (US\$ Mill.)
▼ Dow Jones (USA)	25,706.68	-0.36%	0.42%	-2.06%	3.99%	7,198,203
▼ Standard & Poor's 500 (USA)	2,809.21	-0.03%	0.84%	-3.27%	5.07%	24,622,864
▼ NASDAQ Composite (USA)	7,642.70	-0.04%	2.97%	-3.94%	10.71%	11,958,439
▼ Stoxx EUROPE 600 (Europe)	363.54	-0.40%	-0.92%	-4.01%	-6.59%	8,527,377
▼ DAX (Germany)	11,715.03	-0.52%	0.02%	-3.64%	-9.31%	942,748
▼ FTSE 100 (United Kingdom)	7,054.60	-0.07%	-1.29%	-3.36%	-8.24%	1,481,945
▼ CAC 40 (France)	5,144.95	-0.54%	-1.18%	-4.08%	-3.15%	1,327,360
▼ IBEX 35 (Spain)	8,997.20	-0.85%	-1.81%	-4.77%	-10.42%	487,258
▲ MSCI AC Asia Pacific Index	154.55	0.77%	1.64%	-4.55%	-11.08%	16,674,720
▲ HANG SENG (Hong Kong)	25,462.26	0.07%	-2.72%	-5.46%	-14.90%	2,391,958
▲ SHANGHAI SE Comp. (China)	2,561.81	0.60%	-6.02%	-5.12%	-22.54%	3,956,001
▲ NIKKEI 225 (Japan)	22,841.12	1.29%	-2.83%	-2.47%	0.33%	3,437,443
▲ BOVESPA (Brazil)	88,763.95	0.05%	-0.38%	9.51%	12.25%	706,904
▼ Merval (Argentina)	28,721.37	-2.41%	-3.01%	-10.54%	-4.47%	103,531

\*Legend: Variation 1D: 1 Day; 5D: 5 Days; 1M: 1 Month; YTD: Var.% 12/31/17 to date

Global Markets: Intraday Evolution (var %)

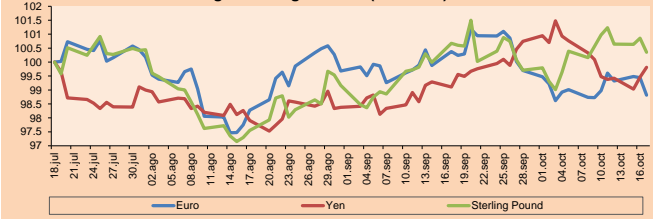


Source: Bloomberg

Currency	Price	1 D*	5 D*	1 M*	YTD*
▼ Euro	1.1501	-0.63%	-0.16%	-1.56%	-4.20%
▲ Yen	112.6500	0.36%	0.34%	0.72%	-0.04%
▼ Sterling Pound	1.3115	-0.50%	-0.61%	-0.32%	-2.95%
▲ Yuan	6.9275	0.22%	0.05%	1.03%	6.47%
▲ Hong Kong Dollar	7.8394	0.04%	0.03%	-0.07%	0.33%
▼ Brazilian Real	3.6876	-1.00%	-1.83%	-10.80%	11.46%
▼ Argentine Peso	36.2182	0.84%	-2.67%	-8.42%	94.48%

\*Legend: Variation 1D: 1 Day; 5D: 5 Days; 1M: 1 Month; YTD: Var.% 12/31/17 to date

Foreign Exchange Indices (3 months)



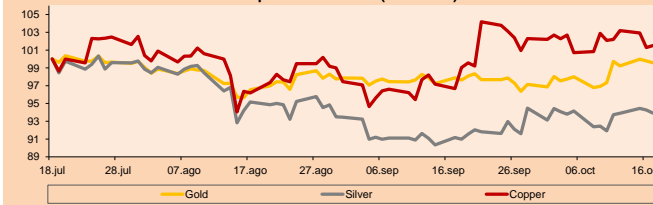
Base: 18/07/18=100

Source: Bloomberg

Commodities	Close	1 D*	5 D*	1 M*	YTD*
▼ Oro (US\$ Oz. T) (LME)	1,222.31	-0.21%	2.30%	1.73%	-6.20%
▼ Plata (US\$ Oz. T) (LME)	14.61	-0.38%	2.17%	3.00%	-13.75%
▲ Cobre (US\$ TM) (LME)	6,216.00	0.22%	-0.56%	5.00%	-13.75%
▲ Zinc (US\$ TM) (LME)	2,710.50	2.73%	2.83%	17.87%	-18.79%
▼ Petróleo WTI (US\$ Barril) (NYM)	69.75	-3.02%	-4.67%	1.56%	19.48%
▼ Estaño (US\$ TM) (LME)	19,088.00	-0.66%	0.49%	0.23%	-5.02%
▼ Plomo (US\$ TM) (LME)	2,031.50	-0.97%	7.15%	-1.62%	-18.24%
- Molibdeno (US\$ TM) (LME)	24,881.00	0.00%	-0.01%	-0.04%	59.11%
▲ Azúcar #11 (US\$ Libra) (NYB-ICE)	13.73	3.62%	6.85%	18.57%	-12.49%
▲ Cacao (US\$ TM) (NYB-ICE)	2,226.00	1.46%	6.61%	-0.45%	14.68%
▲ Café Arábica (US\$ TM) (NYB-ICE)	122.55	4.16%	9.52%	25.95%	-10.35%

\*Legend: Variación 1D: 1 Día; 5D: 5 Días; 1M: 1 Mes; YTD: Var.% 31/12/17 a la fecha

Principal Metals Index (3 months)



Base: 18/07/18=100

Source: Bloomberg

## Equity

Alemania (Acciones del DAX Index)

Largest gains	Curr.	Price	▲%	Exchange	Largest losses	Curr.	Price	▼%	Exchange
VNA GY	EUR	40.68	2.73	Xetra	FRE GY	EUR	62.82	-8.90	Xetra
DBK GY	EUR	9.781	1.68	Xetra	1COV GY	EUR	61	-2.93	Xetra
WDI GY	EUR	177	1.64	Xetra	CON GY	EUR	138.95	-1.17	Xetra
TKA GY	EUR	20.33	1.19	Xetra	BAVN GY	EUR	77.38	-1.15	Xetra

Europe (Stocks from STOXX EUROPE 600)

Largest gains	Curr.	Price	▲%	Exchange	Largest losses	Curr.	Price	▼%	Exchange
ASML NA	EUR	160.38	3.47	EN Amsterdam	INCH LN	Gbp	536.5	-12.98	Londres
CAST SS	SEK	156.6	3.43	Stockholm	FRE GY	EUR	62.82	-8.90	Xetra
LEG GY	EUR	99.8	3.40	Xetra	ECM LN	Gbp	622.6	-5.25	Londres
BATS LN	Gbp	3284	3.38	Londres	SMWH LN	Gbp	1788	-5.05	Londres

## Global Overview:

### United States:

The US market ended the day with slightly negative results in most of its indices. Treasury yield rates reached 3.19% after the majority of FED officials were in favor of raising the reference rate considered neutral for the economy in the long term. As a result of this, the S&P500 closed at -0.03%, the Nasdaq at -0.04% and the DJI at -0.36 as higher interest rates cause people to save their money at a bank or invest it in bonds, considered safer instruments. On the other hand, Donald Trump plans to withdraw his country from 192 agreements that give Chinese companies discounts on their transportation costs for small packages to the United States, the latest step in the trade war with China. In business news, Tesla shares rose before the market opening after they announced the issuance of shares valued at \$20 million to be purchased by its founder, Elon Musk, however, fell -1.7% during the day. Additionally, it was announced that the company had already reached an agreement with the SEC regarding the false announcements of making Tesla a private company.

### Europe:

The European stock market closed the session with negative results among its main indices, while negotiations continue between the European Union and the United Kingdom for a Brexit with trade agreement. The Stoxx Europe 600 index (-0.40%) fell after reaching its highest daily jump since April, similar to the rest of the Eurozone indices such as the FTSE 100 (-0.07%), DAX 30 (-0.52%), CAC 40 (-0.54%). The euro went from \$ 1.1577 to \$ 1.1538 last Thursday in New York. Sterling fell after the reading of inflation in the United Kingdom showed an increase of 2.4% last month, lower than expected and lower than the previous month. On the other hand, the Italian budget bill will be sent to the Italian parliament before Saturday, and must be approved by the legislators before the end of the year. Among the events that have shaken the markets during the week highlights the positive confrontation between the Italian government and the EU, as well as the increasing probability of a Brexit without agreement. In corporate news, Fresenius Medical Care AG & Co fell -16.40% after it cut its 2018 targets due to an 8% drop in third-quarter net revenue.

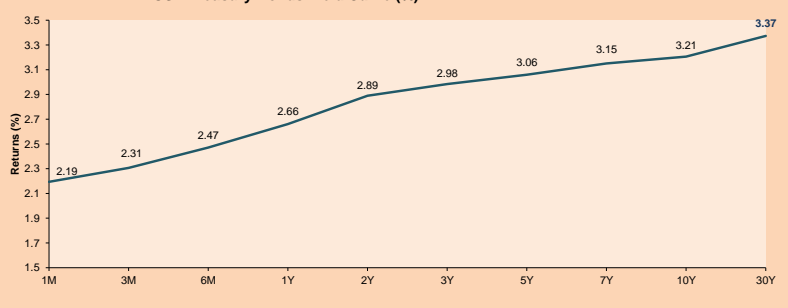
### Asia:

The Asian market ended the day with positive results among its main indices. The Nikkei 225 (+1.29%) closed 22841.12 points, the variation of the last session brings the benchmark to its highest level since October 11. The index remains on the rise for two consecutive sessions, which have occurred after past week price contraction and the decline on Monday, which brought the index to its lowest level in 5 weeks. Exporting companies such as Toyota Motor Corp (+1.38%) and Panasonic Corp (+1.26%) benefited from the depreciation of the yen, then reached a peak of 5 weeks against the dollar recently. The Shanghai (+0.60%) and the Shenzhen Composite (+0.81) closed up, both driven by the performance of the Information Technology sectors that increased by +2.09% and +2.02%, respectively. The Hong Kong market was closed today for the "Chung Yeung Festival" holiday. In other news, the Changsheng Bio-Technology unit, Changchun Changsheng Life Sciences Ltd., has been fined with \$1.31 million in an incident related to tampering of rabies vaccine results.

## ETFs

ETFs	Curr.	Close	1D	5D	30 D	YTD	Exchange
SPDR S&P 500 ETF TRUST	USD	280.45	0.02%	0.77%	-3.07%	5.09%	NYSE Arca
ISHARES MSCI EMERGING MARKET	USD	40.36	-1.22%	2.07%	-2.93%	-14.35%	NYSE Arca
ISHARES IBOXX HIGH YLD CORP	USD	85.21	-0.20%	0.69%	-1.23%	-2.35%	NYSE Arca
FINANCIAL SELECT SECTOR SPDR	USD	27.02	1.01%	-0.70%	-3.88%	-3.19%	NYSE Arca
VANECK VECTORS GOLD MINERS E	USD	19.91	-0.40%	6.87%	8.68%	-14.33%	NYSE Arca
ISHARES RUSSELL 2000 ETF	USD	157.96	-0.43%	0.89%	-6.84%	3.81%	NYSE Arca
SPDR GOLD SHARES	USD	115.79	-0.01%	2.58%	1.92%	-6.36%	NYSE Arca
ISHARES 20+ YEAR TREASURY BO	USD	114.00	-0.59%	0.45%	-3.84%	-10.14%	NASDAQ GM
INVESCO QQQ TRUST SERIES 1	USD	177.29	0.04%	3.24%	-2.23%	13.82%	NASDAQ GM
ISHARES NASDAQ BIOTECHNOLOGY	USD	114.69	-0.05%	3.04%	-1.31%	7.42%	NASDAQ GM
ENERGY SELECT SECTOR SPDR	USD	72.53	-0.63%	-3.74%	-2.49%	0.37%	NYSE Arca
PROSHARES ULTRA VIX ST FUTUR	USD	48.73	1.80%	-6.84%	21.98%	-4.54%	NYSE Arca
UNITED STATES OIL FUND LP	USD	14.82	-2.44%	-3.64%	2.42%	23.40%	NYSE Arca
ISHARES MSCI BRAZIL ETF	USD	39.89	1.12%	4.64%	24.15%	-1.38%	NYSE Arca
SPDR S&P OIL & GAS EXP & PR	USD	41.15	-1.74%	-1.93%	-0.22%	10.68%	NYSE Arca
UTILITIES SELECT SECTOR SPDR	USD	53.65	-0.19%	-0.65%	-1.52%	1.84%	NYSE Arca
ISHARES US REAL ESTATE ETF	USD	77.23	-0.49%	-0.76%	-6.41%	-4.67%	NYSE Arca
SPDR S&P BIOTECH ETF	USD	89.30	-0.17%	4.52%	-5.30%	5.22%	NYSE Arca
ISHARES IBOXX INVESTMENT GRA	USD	112.84	-0.49%	0.01%	-1.90%	-7.17%	NYSE Arca
ISHARES JPM MORGAN USD EMERGI	USD	105.98	-0.24%	0.54%	-0.36%	-8.72%	NASDAQ GM
REAL ESTATE SELECT SECT SPDR	USD	31.49	-0.28%	-0.85%	-6.75%	-4.40%	NYSE Arca
ISHARES CHINA LARGE-CAP ETF	USD	39.75	-1.22%	0.81%	-3.24%	-13.91%	NYSE Arca
CONSUMER STAPLES SPDR	USD	53.54	0.47%	0.24%	-2.58%	-5.89%	NYSE Arca
VANECK VECTORS JUNIOR GOLD M	USD	29.45	-0.98%	6.90%	7.01%	-13.71%	NYSE Arca
SPDR BBG BARG HIGH YIELD BND	USD	35.53	-0.11%	0.85%	-1.25%	-3.24%	NYSE Arca
VANGUARD REAL ESTATE ETF	USD	77.60	-0.39%	-0.84%	-6.97%	-6.48%	NYSE Arca

USA Treasury Bonds Yield Curve (%)



Source: Bloomberg

Capital Market Laboratory Coordinator: Economist Bruno Bellido Anicama  
 Support: Lith Fernandez, Samuel Machacuay, Maria Pia Quijano, Jorge Retamozo  
 e-mail: pulsobursatil@ulima.edu.pe  
 facebook: www.facebook.com/pulsobursatil.ulima  
 Phone number : 4376767 Annexes: 35340 - 35310

# PULSO BURSÁTIL

## LIMA

### Stocks

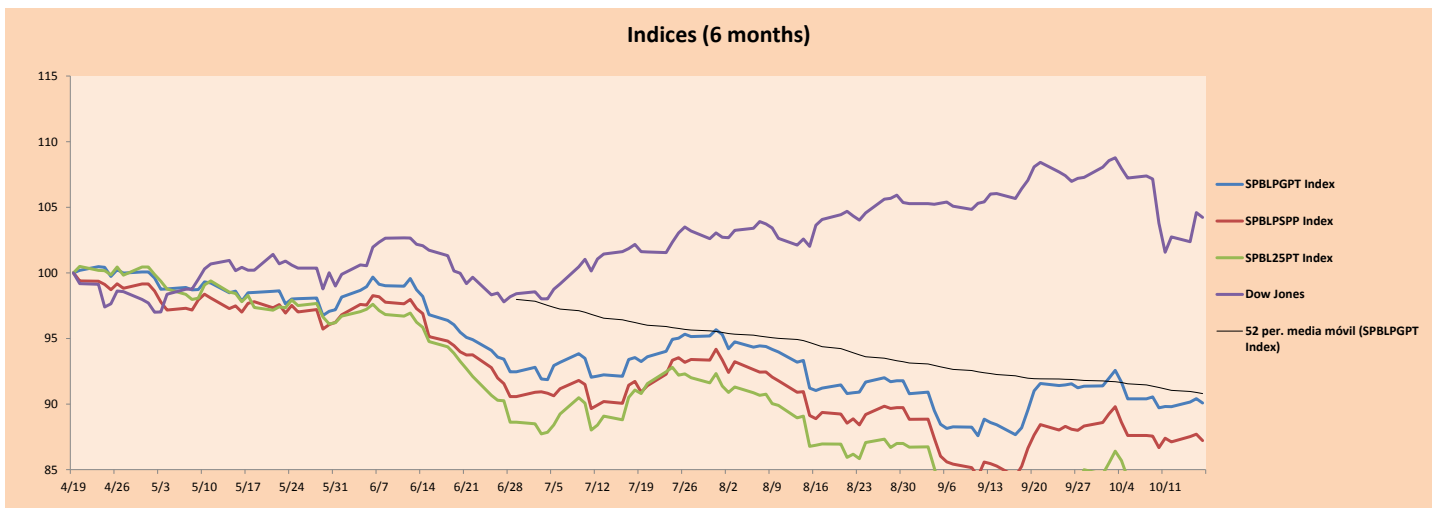
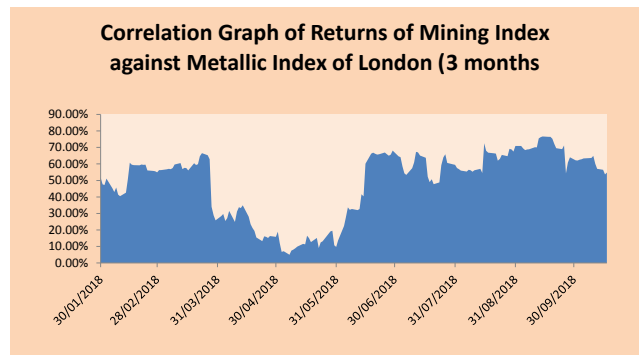
Ticker	Currency	Price	1D*	5D*	30D*	YTD*	Frequency	Volume (US\$)	Beta	Dividend Yield (%)	Price Earning	Market Cap. (M US\$)	Economic Sector*	Index Weight
▼ ALICORC1 PE**	S/.	10.00	-0.50%	-2.44%	-1.09%	-5.66%	100.00%	2,928,858	0.70	2.40	18.02	2,558.46	Industrial	3.53%
▼ ATACOCB1 PE**	S/.	0.43	-1.16%	-1.16%	8.97%	-37.50%	100.00%	1,529	1.54	0.00	-	120.39	Mining	1.02%
- BACKUS11 PE**	S/.	22.00	0.00%	0.00%	1.15%	19.50%	78.95%	992,384	0.41	5.37	8.96	8,441.82	Industrial	0.82%
▼ BAP PE**	US\$	223.15	-0.38%	1.66%	4.03%	7.28%	100.00%	478,043	1.07	4.10	-	17,798.77	Diverse	5.82%
▼ BVN PE**	US\$	14.02	-0.92%	6.21%	14.92%	-0.71%	100.00%	72,768	1.69	0.41	-	3,858.37	Mining	5.88%
▼ CASAGRC1 PE**	S/.	3.95	-1.25%	1.28%	8.22%	-36.19%	100.00%	5,329	1.04	0.48	171.63	99.76	Agricultural	1.31%
- CONTINC1 PE**	S/.	3.98	0.00%	0.76%	-0.50%	5.43%	84.21%	28,004	0.41	3.57	15.12	6,406.33	Finance	2.85%
▼ CORARE1 PE**	S/.	0.65	-1.52%	-1.52%	-2.99%	-9.72%	100.00%	3,212	0.88	7.13	3.78	298.96	Industrial	1.72%
- CPACASC1 PE**	S/.	7.27	0.00%	-1.22%	12.54%	-10.80%	100.00%	69,281	0.78	4.81	34.30	931.35	Industrial	2.38%
▼ CVERDEC1 PE**	US\$	22.00	-1.35%	-2.22%	2.33%	-25.93%	84.21%	97,460	1.15	2.60	19.80	7,701.23	Mining	5.25%
▲ ENGEPEC1 PE**	S/.	2.00	1.01%	0.00%	-6.54%	1.01%	57.89%	5,983	0.72	7.73	9.54	1,734.86	Public Services	1.44%
▲ ENDISPC1**	S/.	5.50	0.55%	0.00%	-2.83%	-2.48%	36.84%	7,849	0.76	3.89	10.33	1,053.01	Public Services	0.98%
▼ FERREYC1 PE**	S/.	2.20	-1.35%	-5.58%	0.46%	-13.73%	100.00%	1,622,183	0.84	6.16	8.75	643.57	Diverse	4.90%
▼ GRAMONC1 PE**	S/.	1.82	-0.55%	2.82%	4.60%	-2.67%	100.00%	41,172	1.04	0.00	-	360.18	Diverse	4.05%
- IFS PE**	US\$	39.60	0.00%	-0.13%	2.06%	2.86%	78.95%	48,708	0.64	3.54	15.12	4,479.19	Diverse	7.22%
- INRETC1 PE**	US\$	25.70	0.00%	-1.15%	1.58%	22.38%	89.47%	182,778	1.00	0.00	54.39	2,642.15	Diverse	5.28%
- LUSURC1 PE**	S/.	11.61	0.00%	-2.11%	0.96%	-3.65%	94.74%	2,499	0.47	5.94	12.32	1,695.05	Public Services	1.81%
▲ MINSUR11 PE**	S/.	1.38	0.73%	-3.50%	-1.43%	-23.33%	89.47%	6,814	1.38	4.99	0.15	1,192.86	Mining	3.09%
▲ PML PE**	US\$	0.21	-4.11%	-8.70%	28.83%	-34.38%	78.95%	13,915	1.79	0.00	-	55.41	Mining	2.12%
▼ RELAPAC1 PE**	S/.	0.15	-2.60%	-4.46%	-5.06%	-51.61%	100.00%	31,055	1.28	0.00	2.91	158.98	Industrial	2.12%
▲ SCCO PE**	US\$	41.85	0.38%	1.28%	1.33%	-12.01%	73.68%	37,719	0.29	2.99	18.16	32,351.91	Mining	2.14%
▼ SIDERC1 PE**	S/.	0.53	-3.64%	-1.85%	8.16%	10.42%	89.47%	25,459	1.44	0.00	4.83	195.12	Industrial	1.43%
- TV PE**	US\$	0.55	0.00%	0.00%	3.77%	-54.17%	94.74%	11,000	1.58	0.00	-	457.14	Mining	2.93%
▼ UNACEMC1 PE**	S/.	2.11	-4.52%	-3.65%	-9.44%	-29.67%	78.95%	45,675	0.68	2.46	19.01	1,041.62	Industrial	3.00%
▼ VOLCABC1 PE**	S/.	0.67	-1.47%	-4.29%	-6.94%	-49.24%	100.00%	91,385	1.72	4.07	-	2,244.04	Mining	5.90%

Quantity of shares: 25  
 Source: Bloomberg, Económica  
 \* Bloomberg Industry Classification System  
 \*\* PER is used in the stock market and original currency of the instrument  
 \*Legend: Variation 1D: 1 Day; 5D: 5 Days, 1M: 1 Month; YTD: Var.% 12/31/17 to date

### Sectorial Indices

	Close	1D*	5D*	30D*	YTD*	Beta
▼ Mining Index	303.84	-0.35%	2.25%	5.53%	-14.53%	1.71
▼ Consumer Index	978.50	-0.04%	-1.29%	0.69%	8.52%	0.42
▼ Industrial Index	208.31	-1.42%	-2.66%	1.26%	-11.72%	0.73
▼ Banking and Financial Index	1,189.60	-0.29%	1.47%	4.10%	11.27%	1.00
▼ Construction Index	231.02	-1.48%	-1.19%	1.78%	-12.87%	0.69
▲ Services Index	414.83	0.03%	-2.21%	-4.14%	-0.42%	0.14
▼ Juniors Index	32.59	-4.12%	-3.67%	13.40%	-25.64%	1.07
▲ Electric Index	404.98	0.03%	-2.21%	-4.14%	-0.42%	0.14

\*Legend: Variation 1D: 1 Day; 5D: 5 Days, 1M: 1 Month; YTD: Var.% 12/31/17 to date



Source: Bloomberg

Capital Market Laboratory. Coordinator: Economist Bruno Bellido Anicama  
 Support: Lith Fernandez, Samuel Machacuay, María Pia Quijano, Jorge Retamozo  
 e-mail: pulsobursatil@ulima.edu.pe  
 facebook: www.facebook.com/pulsobursatil.ul  
 Phone number : 4376767 Annexes: 35340 - 35310

# PULSO BURSÁTIL

## SOVEREIGN RATING

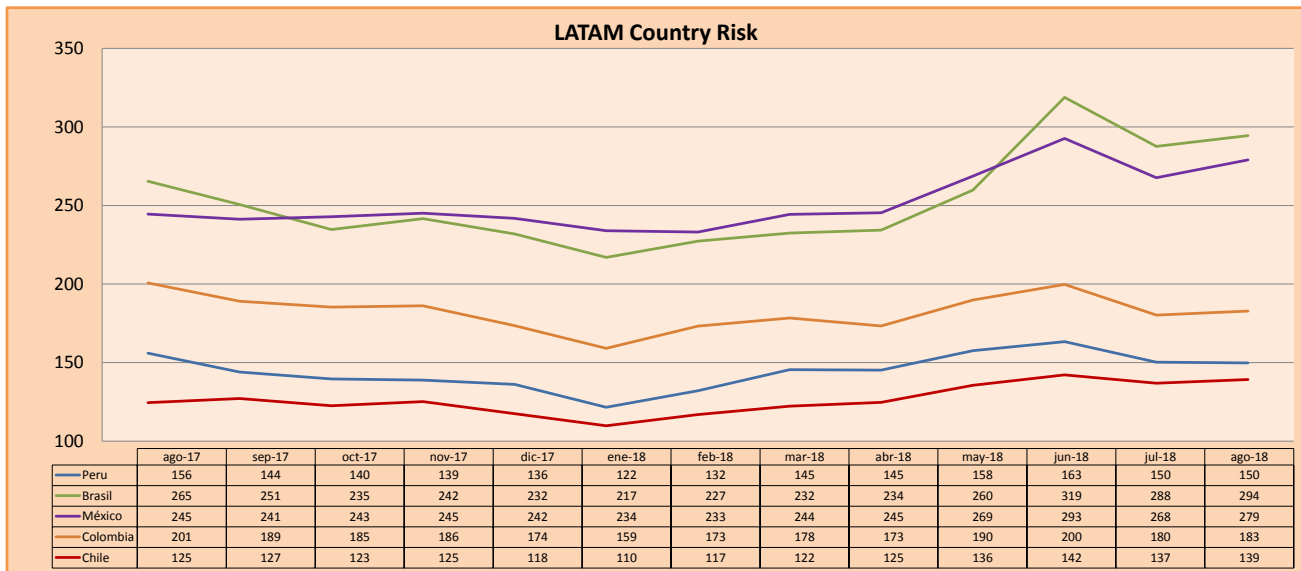
### RISK RATINGS

Moody's	S&P	Fitch	
Aaa	AAA	AAA	Prime
Aa1	AA+	AA+	High credit quality
Aa2	AA	AA	
Aa3	AA-	AA-	
A1	A+	A+	Medium-high grade, with low credit risk
A2	A	A	
A3	A-	A-	
Baa1	BBB+	BBB+	Moderate Credit Risk
Baa2	BBB	BBB	
Baa3	BBB-	BBB-	
Ba1	BB+	BB+	It has speculative elements and it is subject to substantial credit risk
Ba2	BB	BB	
Ba3	BB-	BB-	
B1	B+	B+	It is considered speculative and it has high credit risk
B2	B	B	
B3	B-	B-	
Caa1	CCC+		Bad credit conditions and it is subject to high credit risk
Caa2	CCC		
Caa3	CCC-	CCC	
Ca	CC		Very close to default or in default
	C		
C	D	DDD DD D	

Source: Bloomberg

Latin America Credit Rating			
Clasificadora de riesgo			
Country	Moody's	Fitch	S&P
Peru	A3	BBB+	BBB+
Mexico	A3	BBB+	BBB+
Venezuela	C	C	SD
Brazil	Ba2	BB-	BB-
Colombia	Baa2	BBB	BBB-
Chile	A1	A	A+
Argentine	B2	B	B+ *-
Panama	Baa2	BBB	BBB

Source: Bloomberg



Source: Bloomberg

Capital Market Laboratory Coordinator: Economist Bruno Bellido Anicama  
 Support: Lith Fernandez, Samuel Machacuay, Maria Pia Quijano, Jorge Retamozo  
 e-mail: pulsobursatil@ulima.edu.pe  
 facebook: www.facebook.com/pulsobursatil.ul  
 Phone number : 4376767 Annexes: 35340 - 35310