



PULSO BURSÁTIL

Lima, March 19, 2019

MILA

Main Indices table with columns: Index Name, Close, 1 D, 5 D, 1 M, YTD, Market Cap. (US\$ bill)

Equity Largest gains table with columns: Largest gains, Exchange, Amt., Price, %

Equity Largest losses table with columns: Largest losses, Exchange, Amt., Price, %

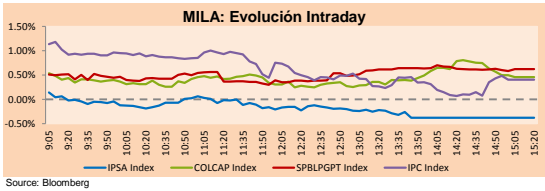
MILA

Peru: The General Index of the BVL ended today's session with a positive result of + 0.62%. The index maintains a cumulative positive annual trend of + 9.22% in local currency...

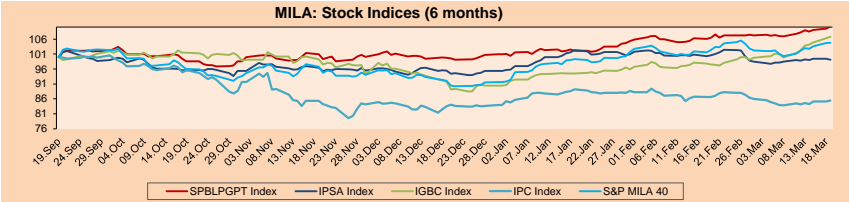
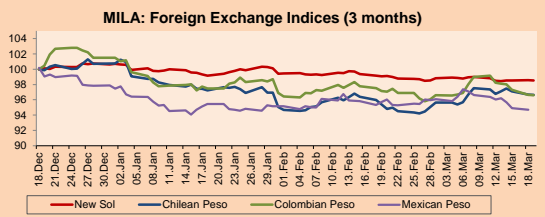
Chile: The IPSA index ended the day with a negative yield of -0.35%. The sectors of the index with the most negative results were Materials (-0.63%) and Utilities (-0.63%).

Colombia: The COLCAP index closed the session with a positive result of + 0.46%. The sectors with the highest yields were Industrial (+ 1.74%) and Financials (+ 0.76%).

Mexico: The IPC index closed the session with a positive result of + 0.40%. The sectors with the highest yields were Utilities (+ 0.85%) and Financials (+ 1.39%).

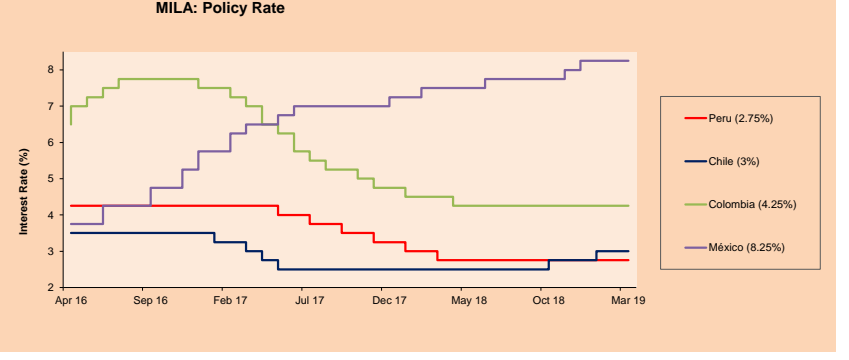
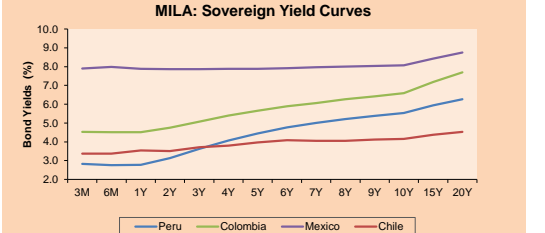


Currency table with columns: Currency, Price, 1D*, 5D*, 30D*, YTD*



Fixed Income table with columns: Instrument, Currency, Price, Bid Yield (%), Ask Yield (%), Duration

ETFs table with columns: ETFs, Curr., Close, 1D, 5D, 30 D, YTD, Exchange



Capital Market Laboratory Coordinator: Economist Bruno Bellido Anicama
Collaboration: Pablo Llanos, Samuel Machacay, Jorge Retamozo, Marcia Rojas.
e-mail: pulsobursatil@ulima.edu.pe
facebook: www.facebook.com/pulsobursatil.ul
Phone number : 4376767 Annex: 35340

PULSO BURSÁTIL

LIMA

Stocks

Ticker	Currency	Price	1D*	5D*	30D*	YTD*	Frequency	Volume (US\$)	Beta	Dividend Yield (%)	Price Earning	Market Cap. (M US\$)	Economic Sector*	Index Weight
▼ ALICORC1 PE**	S/.	11.24	-0.09%	0.36%	-0.97%	12.96%	100.00%	215,184	0.64	2.14	21.13	2,905.99	Industrial	3.53%
▼ ATACOCB1 PE**	S/.	0.32	-3.89%	0.31%	-8.29%	-0.31%	100.00%	16,593	0.56	0.00	8.85	91.94	Mining	1.02%
▲ BACKUSH1 PE**	S/.	22.25	1.14%	1.14%	11.25%	8.27%	80.00%	12,276	0.45	5.27	8.51	9,040.68	Industrial	0.82%
▼ BAP PE**	US\$	250.40	-0.04%	4.38%	4.77%	13.15%	100.00%	555,959	1.08	1.72	-	19,972.27	Diverse	5.82%
▲ BVN PE**	US\$	16.89	0.84%	0.48%	2.30%	4.91%	95.00%	175,351	1.02	0.51	-	4,646.68	Mining	5.88%
- CASAGRC1 PE**	S/.	3.99	0.00%	0.25%	1.01%	-1.72%	100.00%	14,033	0.68	0.48	-	101.89	Agricultural	1.31%
▲ CONTINC1 PE**	S/.	4.04	1.00%	3.86%	6.04%	2.28%	100.00%	111,134	0.70	3.52	15.08	6,575.06	Finance	2.85%
- CORAREH1 PE**	S/.	0.79	0.00%	0.00%	1.28%	12.86%	100.00%	57,300	1.07	6.65	4.81	345.07	Industrial	1.72%
- CPACASC1 PE**	S/.	6.50	0.00%	0.15%	-0.91%	0.78%	90.00%	91,877	0.65	5.80	36.11	841.26	Industrial	2.38%
▼ CVERDEC1 PE**	US\$	23.85	-0.21%	0.25%	10.93%	14.66%	100.00%	57,572	0.93	2.40	13.08	8,348.84	Mining	5.25%
▲ ENGEPEC1 PE**	S/.	2.10	0.48%	0.96%	-0.47%	8.25%	70.00%	4,782	0.65	8.30	9.10	1,807.19	Public Services	1.44%
▼ ENDISPC1**	S/.	5.50	-0.18%	0.00%	4.76%	3.19%	70.00%	28,518	0.80	3.89	10.32	1,064.69	Public Services	0.98%
- FERREYC1 PE**	S/.	2.47	0.00%	0.00%	-7.14%	-2.76%	100.00%	235,338	0.91	5.48	10.74	730.57	Diverse	4.90%
▲ GRAMONC1 PE**	S/.	2.03	1.50%	-0.49%	9.14%	2.01%	80.00%	99,396	0.45	0.00	19.32	406.19	Diverse	4.05%
▲ IFS PE**	US\$	46.50	2.09%	2.22%	-1.06%	10.71%	90.00%	157,847	0.56	3.01	15.48	5,259.66	Diverse	7.22%
▼ INRETC1 PE**	US\$	35.90	-0.28%	1.84%	7.16%	26.86%	100.00%	249,463	1.00	0.00	58.58	3,690.78	Diverse	5.28%
▲ LUSURC1 PE**	S/.	12.25	1.24%	-0.81%	8.89%	11.87%	100.00%	74,071	0.53	6.04	9.78	1,808.33	Public Services	1.81%
▲ MINSUR1 PE**	S/.	1.76	1.73%	0.57%	11.39%	27.54%	85.00%	98,085	1.39	4.30	1.00	1,538.21	Mining	3.09%
- PML PE**	US\$	0.16	0.00%	-0.61%	-4.12%	-6.86%	75.00%	4,890	1.55	0.00	-	43.01	Mining	2.12%
▲ RELAPAC1 PE**	S/.	0.17	1.21%	0.00%	18.44%	32.54%	100.00%	48,911	0.45	0.00	556.45	178.96	Industrial	2.12%
▲ SCCO PE**	US\$	38.85	2.08%	3.05%	19.17%	28.67%	95.00%	1,203,313	5.00	19.42	30,032.78	Mining	2.14%	
- SIDERC1 PE**	S/.	0.71	0.00%	0.00%	4.41%	29.09%	100.00%	29,413	1.39	0.00	6.61	264.29	Industrial	1.43%
▲ TV PE**	US\$	0.27	3.03%	1.87%	0.74%	-8.42%	95.00%	23,124	1.81	0.00	-	222.63	Mining	2.93%
▼ UNACEMC1 PE**	S/.	2.73	-2.50%	-3.19%	1.87%	5.00%	90.00%	532,529	0.84	1.90	23.61	1,362.64	Industrial	3.00%
- VOLCABC1 PE**	S/.	0.65	0.00%	3.17%	-9.72%	-8.45%	100.00%	333,484	1.24	2.10	25.57	803.28	Mining	5.90%

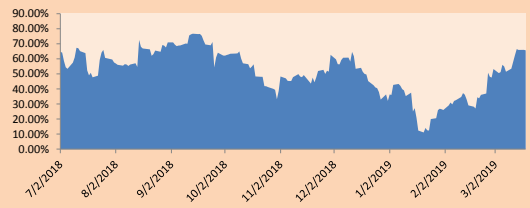
Quantity of shares: 25
Source: Bloomberg, Económica
* Bloomberg Industry Classification System
** PER is used in the stock market and original currency of the instrument
*Legend: Variation 1D: 1 Day; 5D: 5 Days, 1M: 1 Month; YTD: Var.% 12/31/18 to date

Sectorial Indices

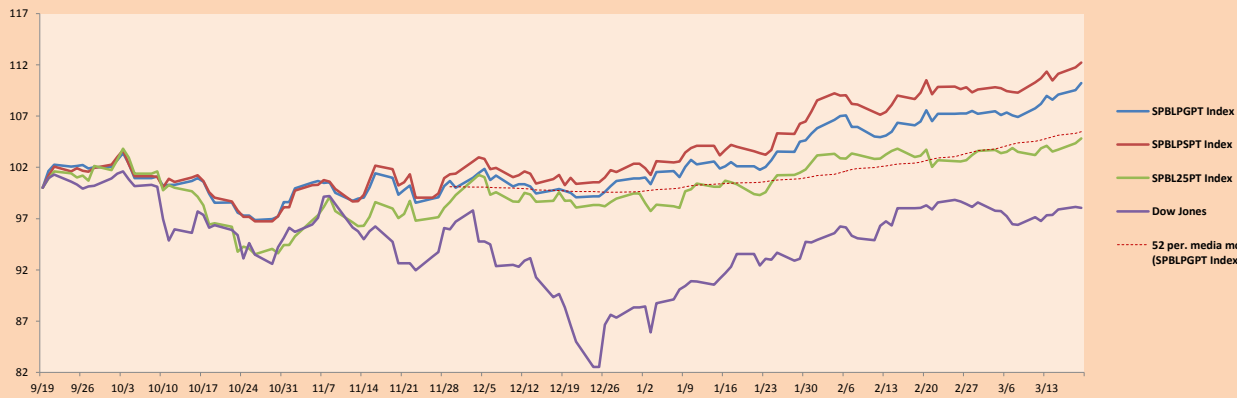
	Close	1D*	5D*	30D*	YTD*	Beta
▲ Mining Index	314.45	1.19%	1.33%	6.84%	10.40%	1.62
▼ Consumer Index	1,164.81	0.00%	0.95%	3.10%	15.83%	0.36
▼ Industrial Index	231.14	-0.34%	-0.70%	-0.43%	1.87%	0.74
▲ Banking and Financial Index	1,315.66	0.14%	3.83%	2.94%	9.64%	1.21
▼ Construction Index	255.95	-0.56%	-1.10%	3.07%	4.10%	0.67
▲ Services Index	430.46	2.43%	2.01%	6.73%	8.26%	0.14
- Juniors Index	26.85	0.00%	-0.44%	-4.45%	-8.80%	0.81
▲ Electric Index	420.24	2.44%	2.01%	6.74%	8.26%	0.14

*Legend: Variation 1D: 1 Day; 5D: 5 Days, 1M: 1 Month; YTD: Var.% 12/31/18 to date

Correlation Graph of Returns of Mining Index against Metallic Index of London (3 months)



Indices (6 months)



Source: Bloomberg

Capital Market Laboratory Coordinator: Economist Bruno Bellido Anicama
Collaboration: Pablo Llanos, Samuel Machacuay, Jorge Retamozo, Marcia Rojas.
e-mail: pulsobursatil@ulima.edu.pe
facebook: www.facebook.com/pulsobursatil.ul
Phone number : 4376767 Annex: 35340

The content of this document is just for informational purposes. The information and opinions expressed should not be considered as recommendations for future decisions. Under any circumstances, the Capital Market Laboratory of University of Lima will be responsible for the use of the statements in this document.

PULSO BURSÁTIL

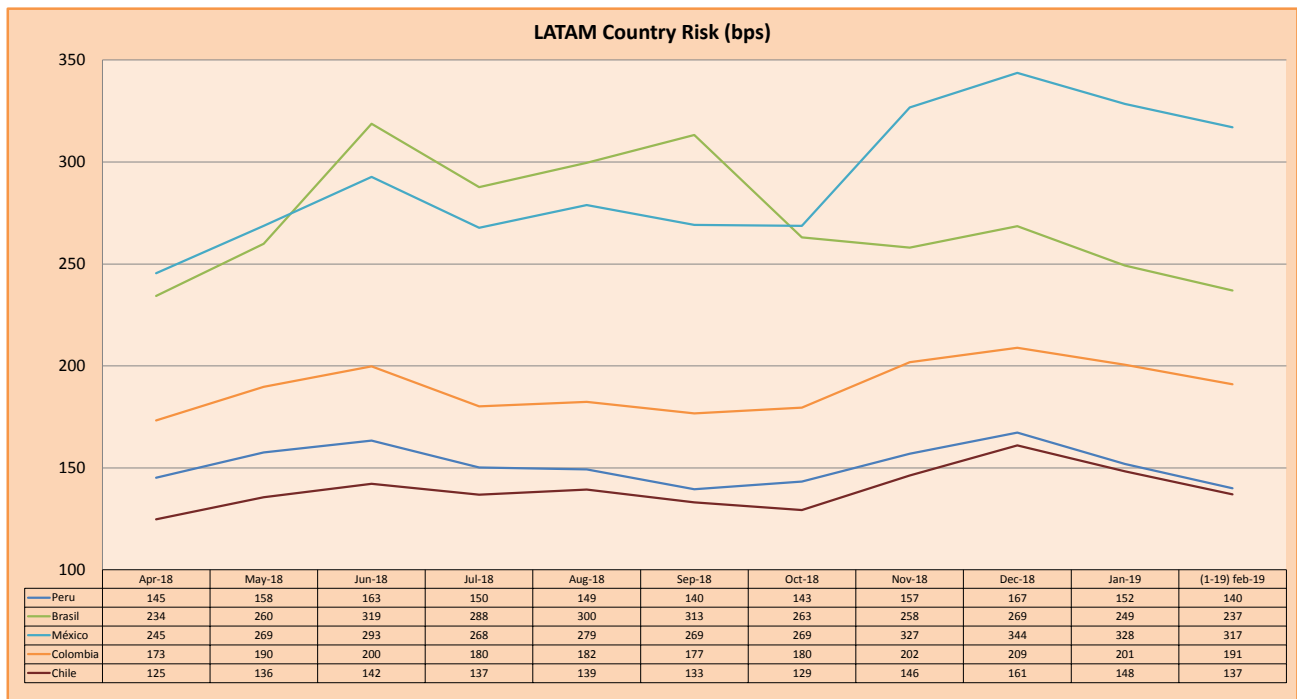
SOVEREIGN RATING

RISK RATINGS			
Moody's	S&P	Fitch	
Aaa	AAA	AAA	Prime
Aa1	AA+	AA+	High credit quality
Aa2	AA	AA	
Aa3	AA-	AA-	
A1	A+	A+	Medium-high grade, with low credit risk
A2	A	A	
A3	A-	A-	
Baa1	BBB+	BBB+	Moderate Credit Risk
Baa2	BBB	BBB	
Baa3	BBB-	BBB-	
Ba1	BB+	BB+	It has speculative elements and it is subject to substantial credit risk
Ba2	BB	BB	
Ba3	BB-	BB-	
B1	B+	B+	It is considered speculative and it has high credit risk
B2	B	B	
B3	B-	B-	
Caa1	CCC+	CCC	Bad credit conditions and it is subject to high credit risk
Caa2	CCC		
Caa3	CCC-		
Ca	CC	DDD	Very close to default or in default
	C		
C	D		

Source: Bloomberg

Latin America Credit Rating			
Clasificadora de riesgo			
Country	Moody's	Fitch	S&P
Peru	A3	BBB+	BBB+
Mexico	A3	BBB+	BBB+
Venezuela	C	C	SD
Brazil	Ba2	BB-	BB-
Colombia	Baa2	BBB	BBB-
Chile	A1	A	A+
Argentina	B2	B	B
Panama	Baa1	BBB	BBB

Source: Bloomberg



Source: BCRP

Capital Market Laboratory Coordinator: Economist Bruno Bellido Anicama
Support: Pablo Llanos, Samuel Machacuy, Jorge Retamozo, Marcia Rojas.
e-mail: pulsobursatil@ulima.edu.pe
facebook: www.facebook.com/pulsobursatil.ul
Phone number : 4376767 Annex: 35340

The content of this document is just for informational purposes. The information and opinions expressed should not be considered as recommendations for future decisions. Under any circumstances, the Capital Market Laboratory of University of Lima will be responsible for the use of the statements in this document.