



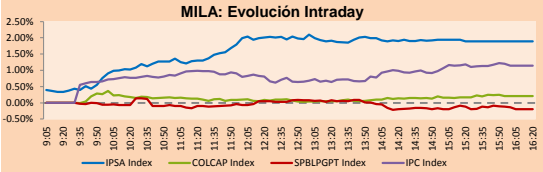
PULSO BURSÁTIL

Lima, december 13, 2017

MILA

Main Indices	Close	1 D	5 D	1 M	YTD	Market Cap. (US\$ bill)
▲ IPISA (Chile)	5,135.19	1.89%	4.26%	-3.78%	23.70%	188.74
▲ IGPA (Chile)	25,780.68	1.76%	3.92%	-4.16%	24.34%	217.16
▲ IGBC (Colombia)	11,098.35	0.23%	2.40%	3.13%	9.82%	97.76
▲ COLCAP (Colombia)	1,472.75	0.18%	1.75%	2.68%	9.93%	99.53
▼ S&P/BVL (Perú)*	19,251.16	-0.20%	0.04%	-1.75%	23.67%	100.10
▼ S&P/BVL SEL (Perú)	354.80	0.27%	0.87%	-2.36%	19.07%	79.06
▼ S&P/BVL LIMA 25	29,670.12	-0.93%	-0.91%	-4.16%	25.84%	92.38
▲ IPC (México)	48,242.23	1.14%	1.64%	0.45%	5.69%	298.96
▲ S&P MILA 40	671.58	1.77%	3.70%	-2.17%	20.86%	275.32

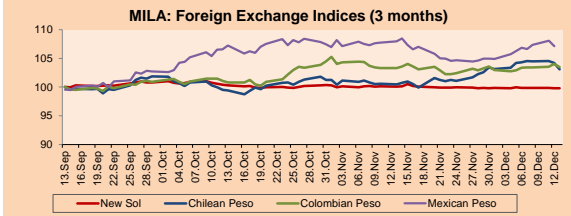
* Market Cap. Of the last price Legend: Variation 1D: 1 day; 5D: 5 days; 1M: 1 Month; YTD: Var%12/31/16 to date



Source: Bloomberg

Currency	Price	1D*	5D*	30 D*	YTD*
▲ New Sol (PEN)	3,2335	0.03%	-0.05%	-0.25%	-3.65%
▼ Chilean Peso (CLP)	646.63	-1.11%	-1.19%	2.59%	-3.55%
▼ Colombian Peso (COP)	3,013.21	-0.53%	0.10%	0.18%	0.37%
▼ Mexican Peso (MXN)	19.01	-0.94%	0.73%	-0.64%	-8.30%

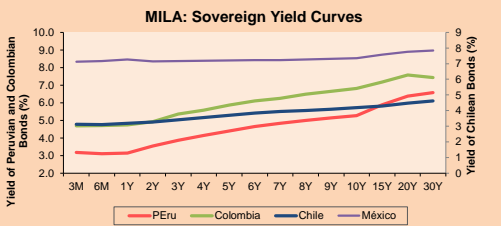
*Legend: Variation 1D: 1 day; 5D: 5 days; 1M: 1 Month; YTD: Var%12/31/16 to date



Base: 13/09/17=100
Source: Bloomberg

Fixed Income

Instrument	Currency	Price	Bid Yield (%)	Ask Yield (%)	Duration
PERU 4.125 08/25/2027	USD	109.702	2.98	2.95	8.02
PERU 7.125 03/30/19	USD	107.05	1.73	1.45	1.23
PERU 7.35 07/21/25	USD	130.66	2.86	2.81	6.00
PERU 8.75 11/21/33	USD	158.602	3.83	3.79	10.19
PERU 6.55 03/14/37	USD	136.517	3.86	3.83	11.74
PERU 5.625 11/19/2050	USD	128.563	4.06	4.03	17.08
CHILE 2.25 10/30/22	USD	98.978	2.52	2.43	4.59
CHILE 3.875 08/05/20	USD	104.545	2.15	2.04	2.48
CHILE 3.625 10/30/2042	USD	101.103	3.58	3.54	16.49
COLOM 11.75 02/25/20	USD	119.788	2.49	2.37	1.94
COLOM 11.85 03/09/28	USD	170.389	3.61	3.55	6.94
COLOM 10.375 01/28/33	USD	159	4.93	4.73	9.02
COLOM 7.375 09/18/37	USD	134.475	4.70	4.66	11.59
COLOM 6.125 01/18/41	USD	120.253	4.70	4.67	13.10
MEX 4 10/02/23	USD	104.942	3.08	3.04	5.16
MEX5.55 01/45	USD	112.88	4.717	4.69	14.53



Source: Bloomberg

Equity

Largest gains	Exchange	Amt.	Price	▲%
FORUS	Santia.	CLP	2300.00	10.08
SALFACORP	Santia.	CLP	970.48	9.81
TV	Lima	USD	1.12	9.80
AUSTRALIS	Santia.	CLP	39.99	9.56

Per Turnover	Exchange	Amount (US\$)
CENCOSUD	Santia.	40,954,982
PFBOLOM	Colomb.	14,760,222
FALABELLA	Santia.	14,286,696
BSANTANDER	Santia.	13,296,225
SOM-B	Colomb.	11,023,892

Largest losses	Exchange	Amt.	Price	▼%
BLUMAR	Santia.	CLP	155.97	-7.71
POMALCC1	Lima	PEN	0.15	-7.41
SPORTING	Santia.	CLP	6500000.00	-7.14
MINSUR1	Lima	PEN	1.62	-5.26

Per Volume	Exchange	Volume
BSANTANDER	Santia.	188,233,898
VAPORES	Santia.	74,661,680
ORO BLANCO	Santia.	63,488,213
CHILE	Santia.	59,415,575
NORTEGRAN	Santia.	35,364,323

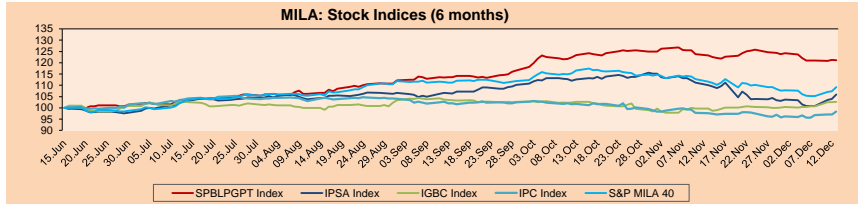
MILA

Peru: The General Index of the BVL of Peru ended today's session with a negative return of -0.20%. The index maintains a cumulative positive annual trend of +23.67% in local currency, while the yield adjusted to foreign currency is +28.35%. Then, the S&P/BVL Peru SEL obtained a negative result of -0.05%, while the S&P/BVL LIMA 25 decreased -0.93%. The spot PEN reached S/3.2335.

Chile: The IPISA index ended the day with a positive result of +1.89%. The sectors of the index with the most positive results were Real estate (+6.00%) and Non-basic consumer products (+3.88%). On the other hand, the values with the most bullish results were Forus SA (+10.08%) and Salfacorp SA (+9.81%).

Colombia: The COLCAP index closed the session with positive results of +0.25%. The sectors with higher yields were Energy (+1.25%) and Telecommunications Services (+0.82%). In addition, the stocks with the highest yields were CEMEX Latam Holdings SA (+1.50%) and Ecopetrol SA (+1.05%).

Mexico: Mexico's IPC index closed today's session with a positive return of +1.14%. The sectors of the index that generated the most positive returns were Material (+2.24%) and Industrial (+1.82%). Finally, the stocks with the highest yields were Mexichem SAB de CV (+4.14%) and Coca-Cola Femsa SAB de CV (+4.12%).

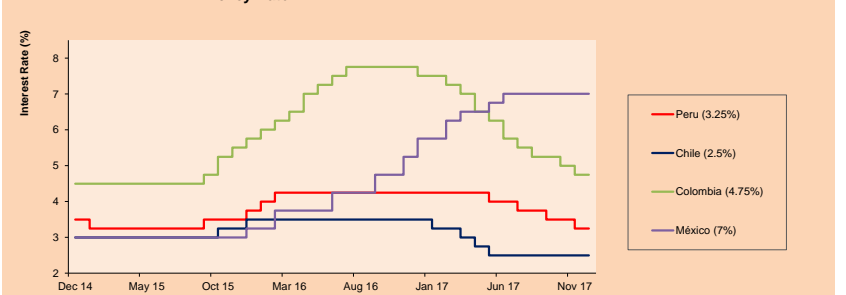


Base: 16/06/17=100
Source: Bloomberg

ETFs

	Curr.	Close	1D	5D	30 D	YTD	Exchange
▲ iShares MSCI All Peru Capped Index Fund	USD	39.89	0.58%	0.83%	-2.80%	21.62%	NYSE Arca
▲ iShares MSCI Chile Capped	USD	46.21	3.74%	6.75%	-5.89%	23.49%	BATS
▲ Global X MSCI Colombia	USD	13.97	0.72%	0.87%	1.67%	7.96%	NYSE Arca
▲ iShares MSCI Mexico Capped	USD	50.39	1.90%	1.65%	1.31%	14.60%	NYSE Arca
▲ iShares MSCI Emerging Markets	USD	46.41	1.20%	2.50%	0.48%	32.56%	NYSE Arca
▲ Vanguard FTSE Emerging Markets	USD	44.59	1.09%	2.32%	0.20%	24.62%	NYSE Arca
▲ iShares Core MSCI Emerging Markets	USD	56.04	1.08%	2.23%	0.47%	32.01%	NYSE Arca
▲ iShares JP Morgan Emerging Markets Bonds	USD	60.21	1.11%	2.57%	1.41%	23.10%	BATS
▲ Morgan Stanley Emerging Markets Domestic	USD	7.78	1.30%	0.39%	1.57%	8.51%	New York

MILA: Policy Rate



Source: Bloomberg

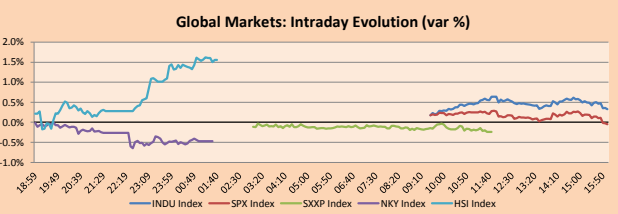
Capital Market Laboratory Coordinator: Economist Bruno Bellido Anicama
Support: Sebastián Butters, Kaori Olulú, Jairo Trujillo, Mario Villar
e-mail: pulsobursatil@ulima.edu.pe
facebook: www.facebook.com/pulsobursatil.ul
Phone number : 4376767 Anexes: 35340 - 35310

PULSO BURSÁTIL

WORLD

Main Indices	Close	1 D*	5 D*	1 M*	YTD*	Market Cap. (US\$ Mill.)
▲ Dow Jones (USA)	24,585.43	0.33%	1.84%	4.89%	24.40%	6,759,373
▼ Standard & Poor's 500 (USA)	2,662.85	-0.05%	1.28%	3.02%	18.94%	23,621,014
▲ NASDAQ Composite (USA)	6,875.80	0.20%	1.47%	1.75%	27.73%	10,602,220
▼ Stoxx EUROPE 600 (Europe)	390.70	-0.24%	1.13%	1.18%	8.10%	8,793,875
▼ DAX (Germany)	13,125.64	-0.44%	0.98%	0.39%	14.32%	1,036,201
▼ FTSE 100 (United Kingdom)	7,486.51	-0.05%	2.02%	1.10%	4.95%	1,537,519
▼ CAC 40 (France)	5,399.45	-0.51%	0.47%	1.08%	11.05%	1,291,593
▼ IBEX 35 (Spain)	10,260.50	-0.27%	0.75%	2.10%	9.71%	551,011
▼ MSCI AC Asia Pacific Index	169.86	-0.34%	1.53%	-0.16%	25.78%	14,506,123
▲ HANG SENG (Hong Kong)	29,222.10	1.49%	3.53%	0.24%	32.82%	2,889,511
▲ SHANGHAI SE Comp. (China)	3,305.04	0.68%	0.28%	-3.66%	8.42%	4,972,429
▼ NIKKEI 225 (Japan)	22,758.07	-0.47%	2.62%	1.69%	19.06%	3,607,233
▼ BOVESPA (Brazil)	72,914.34	-1.22%	-0.48%	0.61%	21.07%	686,710
▼ MERVAL (Argentina)	27,034.57	-1.12%	2.08%	1.20%	59.80%	109,747

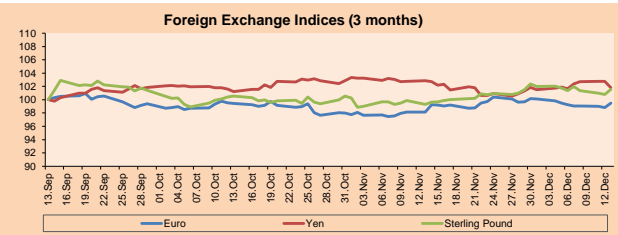
*Legend: Variation 1D: 1 Day; 5D: 5 Days; 1M: 1 Month; YTD: Var.% 12/31/16 to date



Source: Bloomberg

Currency	Price	1 D*	5 D*	1 M*	YTD*
▲ Euro	1.1826	0.72%	0.25%	1.36%	12.45%
▼ Yen	112.5300	-0.90%	0.21%	-0.96%	-3.79%
▲ Sterling Pound	1.3417	0.74%	0.18%	2.29%	8.73%
▲ Yuan	6.6195	-0.03%	0.07%	-0.32%	-4.69%
▲ Hong Kong Dollar	7.8041	-0.04%	-0.12%	0.03%	0.62%
▲ Brazilian Real	3.3174	-0.05%	2.54%	1.16%	1.91%
▲ Argentine Peso	17.3037	-0.27%	0.28%	-1.14%	8.97%

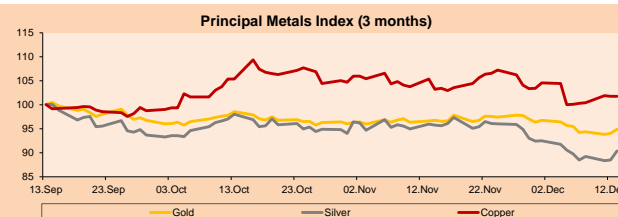
*Legend: Variation 1D: 1 Day; 5D: 5 Days; 1M: 1 Month; YTD: Var.% 12/31/16 to date



Base: 13/09/17=100
Source: Bloomberg

Commodities	Close	1 D*	5 D*	1 M*	YTD*
▲ Oro (US\$ Oz. T) (LME)	1,255.63	0.89%	-0.61%	-1.78%	8.97%
▲ Plata (US\$ Oz. T) (LME)	16.08	2.12%	0.62%	-5.84%	0.91%
▲ Cobre (US\$ TM) (LME)	6,626.50	0.00%	1.67%	-3.41%	19.98%
▲ Zinc (US\$ TM) (LME)	3,154.00	0.00%	1.76%	-2.71%	23.31%
▼ Petroleo WTI (US\$ Barril) (NYM)	56.74	-0.70%	1.39%	-0.40%	-0.44%
▼ Estano (US\$ TM) (LME)	19,232.00	0.00%	-1.65%	-1.91%	-9.30%
▼ Plomo (US\$ TM) (LME)	2,520.25	0.00%	0.47%	0.25%	26.04%
▼ Molibdeno (US\$ TM) (LME)	15,637.00	0.00%	0.01%	-0.02%	5.02%
▲ Azúcar #11 (US\$ Libra) (NYB-ICE)	13.85	0.58%	-4.15%	-8.46%	-25.46%
▲ Cacao (US\$ TM) (NYB-ICE)	1,888.00	1.12%	-0.94%	-14.22%	-13.51%
▲ Café Arábica (US\$ TM) (NYB-ICE)	120.10	1.39%	-4.76%	-8.15%	-19.72%

*Lenda: Variación 1D: 1 Día; 5D: 5 Días; 1M: 1 Mes; YTD: Var.% 31/12/15 a la fecha



Base: 13/09/17=100
Source: Bloomberg

Equity

Wall Street (Stocks from S&P 500)

Largest gains	Curr.	Price	▲ %	Exchange	Largest losses	Curr.	Price	▼ %	Exchange
MAT UW	USD	15.59	6.63	NASDAQ GS	FOXA UW	USD	32.75	-3.96	NASDAQ GS
COTY UN	USD	19.42	4.30	New York	RLX UN	USD	96.22	-3.91	New York
FCX UN	USD	16.32	3.88	New York	AYI UN	USD	167.44	-3.90	New York
HAS UW	USD	95.45	3.73	NASDAQ GS	NFX UN	USD	29.07	-3.87	New York

Europe (Stocks from STOXX EUROPE 600)

Largest gains	Curr.	Price	▲ %	Exchange	Largest losses	Curr.	Price	▼ %	Exchange
KGX GY	EUR	70.4	6.07	Xetra	RWE GY	EUR	18.07	-13.06	Xetra
PFGL LN	GBP	840.5	4.93	Londres	SNH GY	EUR	0.662	-11.73	Xetra
HLI LN	GBP	1693	4.44	Londres	NCCS SS	SEK	180.9	-8.89	Stockholm
ERICB SS	SEK	55.9	3.90	Stockholm	ATC NA	EUR	8.124	-7.99	EN Amsterdam

Global Overview

United States:

The US stock market ended the session with positive results, driven by the industrial sector and consumer goods. The expected news from the Federal Reserve, which increased its reference rate of federal funds by a quarter of a percentage point to between 1.25% and 1.5%, the fourth increase in a year. Senior officials also stuck to their previous projections of three rate increases in 2018. In other news, the Alabama Senate election took place Tuesday night, where Democrat Doug Jones defeated controversial Republican Roy Moore. The victory will reduce the majority of the Republican Senate, leaving the balance at 51-49. That has raised concerns that it will be more difficult for Republicans to carry out major revisions, such as the tax reform, and that the ruling party will have difficulties in the mid-term elections of 2018. However, the fiscal review cannot be threatened, since that Republican leaders in Congress are quick to pass fiscal legislation early next week before Jones arrives in Washington. Finally, the consumer price index rose 0.4% in November, emphasizing that three quarters of the index reflected higher gas prices.

Europe:

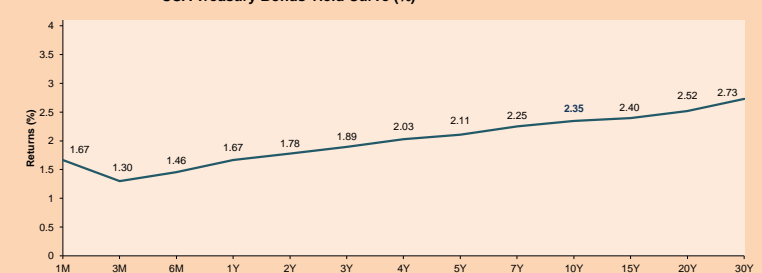
The European stock market closed with negative results, with the exception of the English reference index "FTSE 100". European shares fell after reaching a maximum of five weeks. Italian stocks had the worst performance in the region, as the country begins to prepare for next year's national elections. The Italian authorities said that general elections will be held on March 4. The Italian benchmark index "FTSE MIB" fell close to -1.30%. On the other hand, the European benchmark "Stoxx 600" fell by -0.20%, with losses in the public services, oil and gas, and telecommunications sectors. However, the technology sector, consumer services, basic and financial materials won. European investors are acting with caution, since in the afternoon will be known about the decision on interest rates of the Federal Reserve, which is likely to announce a quarter percentage point increase in interest rates. The outgoing president of the Fed, Janet Yellen, will hold a press conference at the conclusion of the bank's two-day meeting. The decision will be known at 7 p.m. approximately. On the other hand, the European Central Bank and the Bank of England will issue their policy decisions on Thursday. In addition, data on inflation and economic growth will be reported. In the United Kingdom, data on consumer prices reached 3.1%, one percentage point more than the central bank's target.

Asia:

The Asian stock market ended the session with mixed results. The Japanese benchmark index fell -0.5% after technology stocks followed the declines of their counterparts in the United States. Likewise, it was influenced by an appreciation of the yen against the US dollar, which negatively affects Japanese exports. On the other hand, Hong Kong shares rebounded today according to the Hang Seng index, which increased by +1.49% due to the growth in the shares of firms in the services and financial sectors. On the other hand, the shares of China ended positively, with the Shanghai Composite index growing by +0.7%, helped by the strong gains in the shares of consumer and transport companies. Finally, in news about the conflict with North Korea, the Secretary of State of the United States, Rex Tillerson, said on Tuesday that they are ready to hold exploratory talks without preconditions, but for that to happen, North Korea must postpone its tests of nuclear weapons. He added that it is unrealistic for the United States to demand that North Korea arrive at the negotiating table ready to abandon its program of weapons of mass destruction due to the heavy investment that has already been made in it.

ETFs	Curr.	Close	1D	5D	30 D	YTD	Exchange
SPDR S&P 500 ETF TRUST	USD	266.75	-0.01%	1.33%	3.25%	19.34%	NYSE Arca
ISHARES MSCI EMERGING MARKET	USD	46.41	1.20%	2.50%	0.48%	32.56%	NYSE Arca
ISHARES IBOXX USD HIGH YIELD	USD	87.38	0.06%	0.18%	0.38%	0.96%	NYSE Arca
FINANCIAL SELECT SECTOR SPDR	USD	27.87	-1.24%	0.43%	6.70%	19.87%	NYSE Arca
VANECK VECTORS GOLD MINERS E	USD	22.16	3.45%	2.17%	-1.77%	5.93%	NYSE Arca
ISHARES RUSSELL 2000 ETF	USD	151.78	0.63%	1.04%	3.53%	12.55%	NYSE Arca
SPDR GOLD SHARES	USD	119.17	0.86%	-0.75%	-1.76%	8.72%	NYSE Arca
ISHARES 20+ YEAR TREASURY BO	USD	127.33	0.75%	-0.27%	2.39%	6.88%	NASDAQ GM
POWERSHARES QQQ TRUST SERIES	USD	155.99	0.19%	1.62%	1.38%	31.66%	NASDAQ GM
ISHARES NASDAQ BIOTECHNOLOGY	USD	106.72	0.91%	4.04%	3.25%	20.64%	NASDAQ GM
ENERGY SELECT SECTOR SPDR	USD	69.49	-0.14%	1.52%	0.33%	-7.74%	NYSE Arca
PROSHARES ULTRA VIX ST FUTUR	USD	11.25	-0.44%	-18.48%	-30.64%	-93.57%	NYSE Arca
UNITED STATES OIL FUND LP	USD	11.33	-0.96%	1.16%	-0.44%	-3.33%	NYSE Arca
ISHARES MSCI BRAZIL CAPPED E	USD	38.73	-3.39%	-3.25%	-0.56%	16.17%	NYSE Arca
SPDR S&P OIL & GAS EXP & PR	USD	34.83	-0.99%	0.81%	-2.93%	-15.91%	NYSE Arca
UTILITIES SELECT SECTOR SPDR	USD	55.40	0.27%	-0.34%	-1.37%	14.06%	NYSE Arca
ISHARES US REAL ESTATE ETF	USD	82.17	1.51%	1.47%	-0.77%	6.80%	NYSE Arca
SPDR S&P BIOTECH ETF	USD	82.82	1.51%	3.71%	1.52%	40.09%	NYSE Arca
ISHARES IBOXX INVESTMENT GRA	USD	121.40	0.35%	0.02%	1.24%	3.60%	NYSE Arca
ISHARES JPM MORGAN USD EMERGI	USD	115.84	0.29%	0.08%	1.10%	5.10%	NASDAQ GM
REAL ESTATE SELECT SECT SPDR	USD	33.42	-0.03%	1.30%	-1.45%	8.68%	NYSE Arca
ISHARES CHINA LARGE-CAP ETF	USD	46.44	2.18%	3.52%	-1.11%	33.79%	NYSE Arca
CONSUMER STAPLES SPDR	USD	56.91	0.57%	-0.14%	4.25%	10.06%	NYSE Arca
VANECK VECTORS JUNIOR GOLD M	USD	31.58	3.81%	3.78%	-0.97%	0.10%	NYSE Arca
SPDR Bbg HIGH YIELD BND	USD	36.78	0.00%	0.19%	0.38%	0.91%	NYSE Arca
VANGUARD REIT ETF	USD	84.57	0.17%	1.42%	-0.93%	2.47%	NYSE Arca

USA Treasury Bonds Yield Curve (%)



Source: Bloomberg

Capital Market Laboratory Coordinator: Economist Bruno Bellido Anicama
Support: Sebastián Butters, Kaori Olulio, Jairo Trujillo, Mario Villar
e-mail: pulsobursatil@ulima.edu.pe
facebook: www.facebook.com/pulsobursatil
Phone number : 4376767 Anexos: 35340 - 35310

PULSO BURSÁTIL

LIMA

Stocks

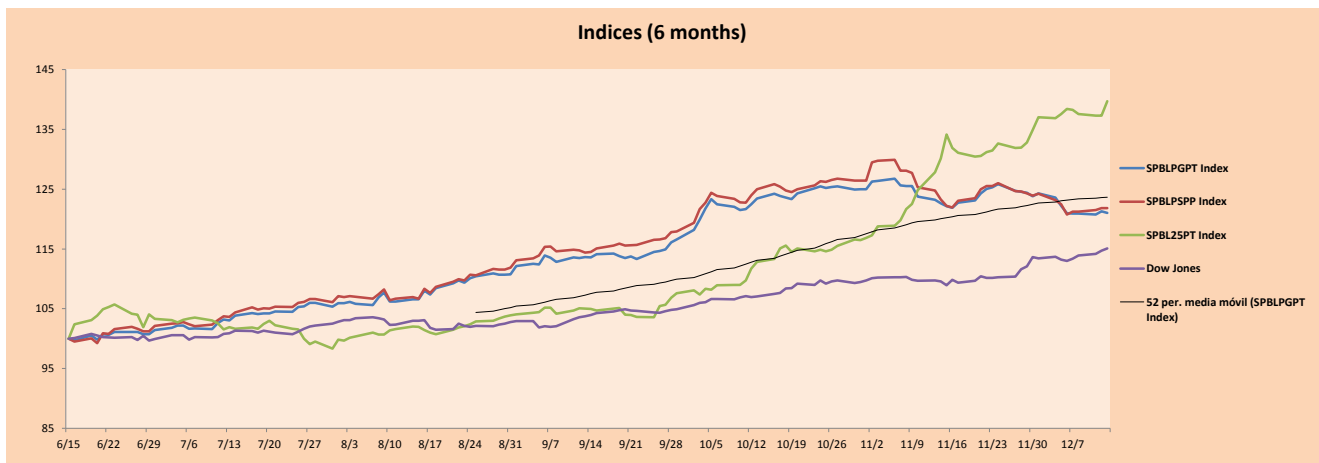
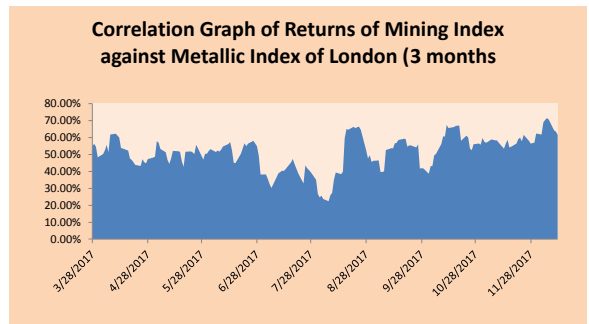
Ticker	Currency	Price	1D*	5D*	30D*	YTD*	Frequency	Volume (US\$)	Beta	Dividend Yield (%)	Price Earning	Market Cap. (M US\$)	Economic Sector*	Index Weight
▲ ALICORC1 PE**	S/.	10.64	0.85%	4.21%	4.31%	45.75%	105.26%	2,887,059	0.71	1.32	22.32	2,808.98	Industrial	3.53%
▼ ATACOCB1 PE**	S/.	0.63	-3.08%	0.00%	10.53%	57.50%	105.26%	108,344	2.21	0.00	-	213.08	Mining	1.02%
- BACKUSH1 PE**	S/.	18.40	0.00%	-0.54%	2.79%	15.00%	84.21%	358	0.40	0.00	2.58	9,004.84	Industrial	0.82%
▼ BAP PE**	US\$	207.95	-1.21%	1.09%	3.86%	34.60%	105.26%	1,755,596	1.04	4.13	-	16,525.12	Diverse	5.82%
▲ BVN PE**	US\$	13.21	1.23%	-0.38%	-4.07%	14.87%	105.26%	358,019	1.32	0.63	-	3,641.13	Mining	5.88%
- CASAGRC1 PE**	S/.	5.80	0.00%	-5.54%	-10.77%	-15.20%	105.26%	128,160	0.53	6.96	15.49	151.09	Agricultural	1.31%
▼ CONTINC1 PE**	S/.	4.00	-1.23%	-2.91%	-8.68%	10.96%	105.26%	270,453	0.77	3.70	14.70	6,040.66	Finance	2.85%
▼ CORAREH1 PE**	S/.	0.73	-3.95%	-2.67%	-7.59%	48.98%	105.26%	221,586	1.31	5.12	9.75	281.31	Industrial	1.72%
▼ CPACASC1 PE**	S/.	7.98	-2.56%	-1.48%	-3.27%	27.72%	105.26%	334,962	0.51	4.39	30.17	1,054.36	Industrial	2.38%
- CVERDEC1 PE**	US\$	27.30	0.00%	-1.27%	-8.70%	42.86%	105.26%	638,029	1.34	0.00	38.66	9,556.53	Mining	5.25%
- ENGEPEC1 PE**	S/.	2.00	0.00%	-2.44%	-2.91%	-23.08%	84.21%	1,237	0.79	0.00	19.17	1,789.48	Public Services	1.44%
▼ ENDISPC1**	S/.	5.40	-2.70%	-6.57%	-9.24%	-12.34%	73.68%	93,094	0.93	3.52	11.66	1,066.41	Public Services	0.98%
▼ FERREYC1 PE**	S/.	2.44	-2.01%	-1.61%	-3.94%	44.38%	105.26%	3,468,597	1.11	5.26	8.83	765.41	Diverse	4.90%
▼ GRAMONC1 PE**	S/.	1.95	-1.02%	4.84%	-15.22%	-58.51%	105.26%	745,094	1.61	0.00	11.80	398.05	Diverse	4.05%
▼ IFS PE**	US\$	36.70	-1.34%	-2.96%	-3.42%	14.69%	100.00%	2,353,055	0.54	3.54	13.02	4,151.17	Diverse	7.22%
- INRETC1 PE**	US\$	20.30	0.00%	-1.46%	-5.58%	4.75%	105.26%	1,269,447	1.00	0.96	24.59	2,086.99	Diverse	5.28%
- LUSURC1 PE**	S/.	11.90	0.00%	-3.09%	-5.56%	-9.09%	105.26%	300,873	0.65	5.21	13.94	1,792.09	Public Services	1.81%
▼ MILPOC1 PE**	S/.	4.35	-1.58%	-4.81%	-7.45%	27.19%	94.74%	203,481	1.10	19.70	9.79	1,782.67	Mining	1.56%
▼ MINSURH1 PE**	S/.	1.62	-5.26%	-10.50%	-19.00%	11.72%	100.00%	269,461	1.59	4.25	5.63	1,444.40	Mining	3.09%
▼ PML PE**	US\$	0.28	-1.77%	1.09%	-6.40%	101.45%	105.26%	38,504	1.19	0.00	-	72.21	Mining	2.12%
- RELAPAC1 PE**	S/.	0.29	0.00%	1.05%	-8.23%	24.46%	105.26%	345,950	1.33	0.00	4.44	317.03	Industrial	2.12%
▲ SCCO PE**	US\$	43.10	1.41%	1.87%	-2.16%	33.48%	94.74%	79,837	1.37	27.99	33,317.53	Mining	2.14%	
▲ SIDERC1 PE**	S/.	0.48	2.13%	2.56%	0.00%	45.45%	100.00%	49,376	1.65	0.00	4.37	182.28	Industrial	1.43%
▲ TV PE**	US\$	1.12	9.80%	8.74%	-4.27%	31.76%	105.26%	362,607	1.71	0.00	-	924.67	Mining	2.93%
▼ UNACEMC1 PE**	S/.	2.85	-3.06%	-4.04%	-5.00%	11.33%	105.26%	563,630	0.71	1.82	30.59	1,451.22	Industrial	3.00%
▼ VOLCABC1 PE**	S/.	1.30	-0.76%	0.78%	0.00%	80.56%	105.26%	1,768,438	1.94	1.99	16.77	2,851.32	Mining	5.90%

Quantity of shares: 26
Source: Bloomberg, Economática
* Bloomberg Industry Classification System
** PER is used in the stock market and original currency of the instrument
*Legend: Variation 1D: 1 Day; 5D: 5 Days, 1M: 1 Month; YTD: Var.% 12/31/16 to date

Sectorial Indices

	Close	1D*	5D*	30D*	YTD*	Beta
▲ Mining Index	329.41	1.21%	0.70%	-3.58%	32.63%	1.60
▲ Consumer Index	893.98	0.41%	1.51%	0.59%	31.27%	0.42
▼ Industrial Index	229.65	-2.06%	-1.26%	-4.82%	3.87%	0.96
▼ Banking and Financial Index	1,063.41	-1.17%	0.67%	2.90%	30.29%	0.88
▼ Construction Index	260.45	-2.20%	-1.28%	-5.09%	-11.92%	0.84
▼ Services Index	399.00	-0.95%	-3.70%	-6.66%	-17.53%	0.29
▲ Juniors Index	38.84	0.34%	-0.87%	-6.27%	38.42%	1.47
▼ Electric Index	389.52	-0.95%	-3.71%	-6.66%	-17.53%	0.29

*Legend: Variation 1D: 1 Day; 5D: 5 Days, 1M: 1 Month; YTD: Var.% 12/31/16 to date



Source: Bloomberg

Capital Market Laboratory Coodinator: Economist Bruno Bellido Anicama
Support: Sebastián Butters, Kaori Olulo, Jairo Trujillo, Mario Villar
e-mail: pulsoborsatil@ulima.edu.pe
facebook: www.facebook.com/pulsoborsatil.ul
Phone number : 4376767 Anexes: 35340 - 35310

The content of this document is just for informational purposes . The information and opinions expressed should not be consider as recommendations for future decisions .Under any circumstances, the Capital Market Laboratory of University of Lima will be responsible for the use of the statements in this document.

PULSO BURSÁTIL

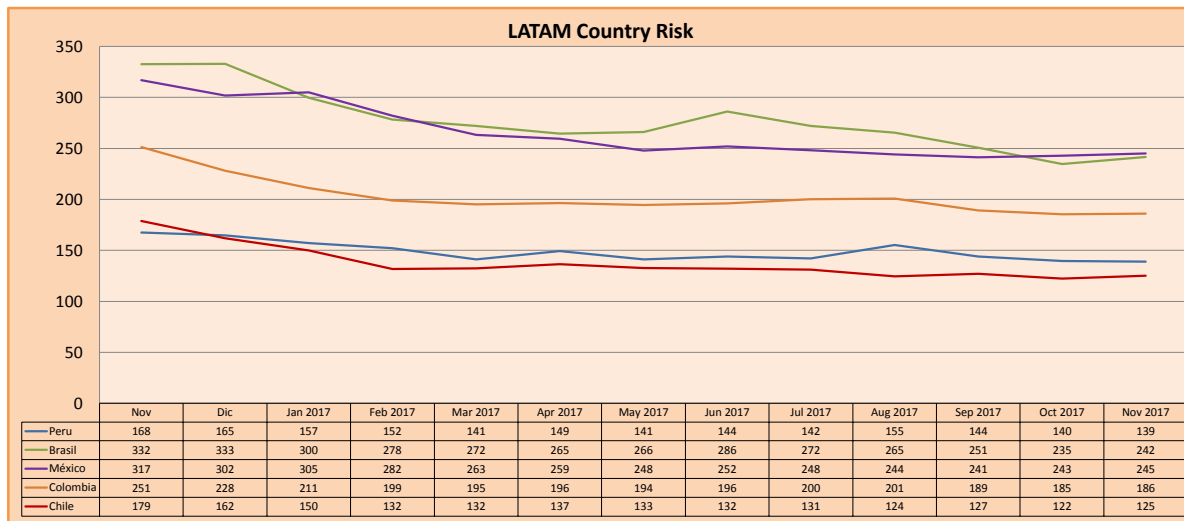
SOVEREIGN RATING

RISK RATINGS			
Moody's	S&P	Fitch	
Aaa	AAA	AAA	Prime
Aa1	AA+	AA+	High credit quality
Aa2	AA	AA	
Aa3	AA-	AA-	
A1	A+	A+	Medium-high grade, with low credit risk
A2	A	A	
A3	A-	A-	
Baa1	BBB+	BBB+	Moderate Credit Risk
Baa2	BBB	BBB	
Baa3	BBB-	BBB-	
Ba1	BB+	BB+	It has speculative elements and it is subject to substantial credit risk
Ba2	BB	BB	
Ba3	BB-	BB-	
B1	B+	B+	It is considered speculative and it has high credit risk
B2	B	B	
B3	B-	B-	
Caa1	CCC+	CCC	Bad credit conditions and it is subject to high credit risk
Caa2	CCC		
Caa3	CCC-		
Ca	CC	DDD	Very close to default or in default
	C		
C	D		

Source: Bloomberg

Latin America Credit Rating			
Clasificadora de riesgo			
Country	Moody's	Fitch	S&P
Peru	A3	BBB+	BBB+
Mexico	A3	BBB+	BBB+
Venezuela	Caa3	RD	SD
Brazil	Ba2	BB	BB
Colombia	Baa2	BBB	BBB-
Chile	Aa3	A	A+
Argentina	B2	B	B+
Panama	Baa2	BBB	BBB

Source: Bloomberg



Source: Bloomberg

Capital Market Laboratory Coordinator: Economist Bruno Bellido Anicama
 Support: Sebastián Butters, Kaori Olulo, Jairo Trujillo, Mario Villar
 e-mail: pulsobursatil@ulima.edu.pe
 facebook: www.facebook.com/pulsobursatil.ul
 Phone number : 4376767 Anexos: 35340 - 35310

The content of this document is just for informational purposes. The information and opinions expressed should not be considered as recommendations for future decisions. Under any circumstances, the Capital Market Laboratory of University of Lima will be responsible for the use of the statements in this document.