



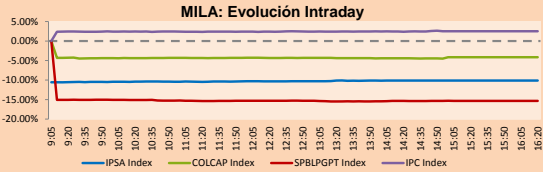
PULSO BURSÁTIL

Lima, January 8, 2018

MILA

Main Indices	Close	1 D	5 D	1 M	YTD	Market Cap. (US\$ bill)
▲ IPSA (Chile)	5,705.61	0.18%	2.53%	16.75%	2.53%	227.61
▲ IGPA (Chile)	28,696.76	0.21%	2.56%	16.58%	2.56%	261.99
- IGBC (Colombia)	11,853.55	0.00%	3.27%	9.03%	3.27%	111.12
- COLCAP (Colombia)	1,545.57	0.00%	2.11%	6.84%	2.11%	112.91
▼ S&P/BVL (Perú)*	20,548.08	-0.45%	2.87%	6.84%	2.87%	109.96
▼ S&P/BVL SEL (Perú)	377.86	-0.19%	2.67%	7.03%	2.67%	87.82
▼ S&P/BVL LIMA 25	31,669.22	0.28%	2.93%	5.43%	2.93%	101.98
▲ IPC (México)	49,995.57	0.22%	1.30%	5.09%	1.30%	309.75
▲ S&P MILA 40	763.29	0.60%	4.69%	17.93%	4.69%	326.25

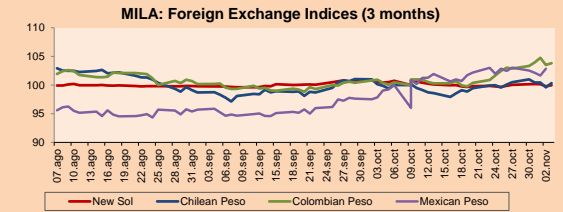
* Market Cap. Of the last price Legend: Variation 1D: 1 day; 5D: 5 days; 1M: 1 Month; YTD: Var%12/31/16 to date



Source: Bloomberg

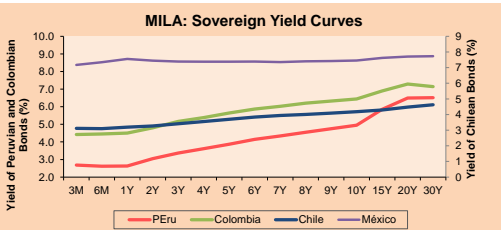
Currency	Price	1D*	5D*	30 D*	YTD*
▲ New Sol (PEN)	3,215.8	0.12%	-0.68%	-0.61%	-0.68%
▼ Chilean Peso (CLP)	605.38	-0.06%	-1.63%	-7.54%	-1.63%
▲ Colombian Peso (COP)	2,905.65	0.00%	-2.72%	-3.49%	-2.72%
▲ Mexican Peso (MXN)	19.23	0.24%	-2.20%	1.57%	-2.20%

*Legend: Variation 1D: 1 day; 5D: 5 days; 1M: 1 Month; YTD: Var%12/31/16 to date



Base: 09/10/17=100
Source: Bloomberg

Instrument	Currency	Price	Bid Yield (%)	Ask Yield (%)	Duration
PERU 4.125 08/25/2027	USD	109.628	2.99	2.95	7.94
PERU 7.125 03/30/19	USD	106.4	1.93	1.68	1.16
PERU 7.35 07/21/25	USD	130.158	2.89	2.84	5.93
PERU 8.75 11/21/33	USD	159.087	3.79	3.75	10.13
PERU 6.55 03/14/37	USD	137.075	3.83	3.79	11.68
PERU 5.625 11/18/2050	USD	130.2	3.98	3.96	17.11
CHILE 2.25 10/30/22	USD	98.537	2.61	2.54	4.52
CHILE 3.875 08/05/20	USD	104.16	2.26	2.14	2.41
CHILE 3.625 10/30/2042	USD	101.305	3.56	3.53	16.42
COLOM 11.75 02/25/20	USD	119.337	2.42	2.30	1.87
COLOM 11.85 03/09/28	USD	170.273	3.58	3.52	6.88
COLOM 10.375 01/28/33	USD	158	4.99	4.78	8.95
COLOM 7.375 09/18/37	USD	135.055	4.66	4.62	11.56
COLOM 6.125 01/18/41	USD	121.38	4.62	4.59	13.08
MEX 4 10/02/23	USD	104.863	3.09	3.05	5.09
MEX5.55 01/45	USD	112.723	4.727	4.698	14.49



Source: Bloomberg

Equity	Exchange	Amt.	Price	▲%
Largest gains				
CALICHERAB	Santia.	CLP	545.01	6.45
AUSTRALIS	Santia.	CLP	56.00	4.48
PASUR	Santia.	CLP	8000.00	3.90
CONCHATORO	Santia.	CLP	1213.50	3.86

Largest losses	Exchange	Amt.	Price	▼%
SOPROCAL	Santia.	CLP	550.00	-8.33
ANDINA-B	Santia.	CLP	2952.20	-4.77
SCHWAGER	Santia.	CLP	0.75	-3.85
BVN	Lima	USD	14.31	-3.77

Per Turnover	Exchange	Amount (US\$)
SQM-B	Santia.	21,285,953
FALABELLA	Santia.	17,596,435
BSANTANDER	Santia.	13,085,351
CENCOSUD	Santia.	11,897,497
VAPORES	Santia.	11,745,591

Per Volume	Exchange	Volume
VAPORES	Santia.	210,842,015
BSANTANDER	Santia.	157,921,020
ORO BLANCO	Santia.	104,552,871
CHILE	Santia.	27,746,540
VOLCABC1	Lima	27,711,450

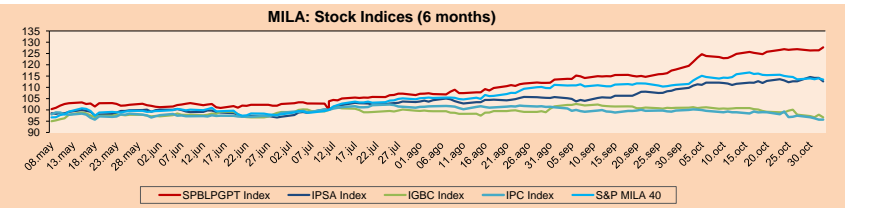
MILA

Peru: The General Index of the BVL of Peru ended today's session with a negative result of -0.45%. The index maintains a cumulative positive annual trend of +2.87% in local currency, while the adjusted return on foreign currency is +3.58%. Then, the S&P/BVL Peru SEL obtained a negative return of -0.19%, while the S&P/BVL LIMA 25 grew +0.28%. The spot PEN reached S/3.2143.

Chile: The IPSA index ended the day with a positive result of +0.18%. The sectors of the index with the upward results were Industrial (+1.20%) and Non-basic consumer products (+1.19%). On the other hand, the values with the most positive results were Viña Concha y Toro SA (+3.86%) and Inversiones La Construcción SA (+2.44%).

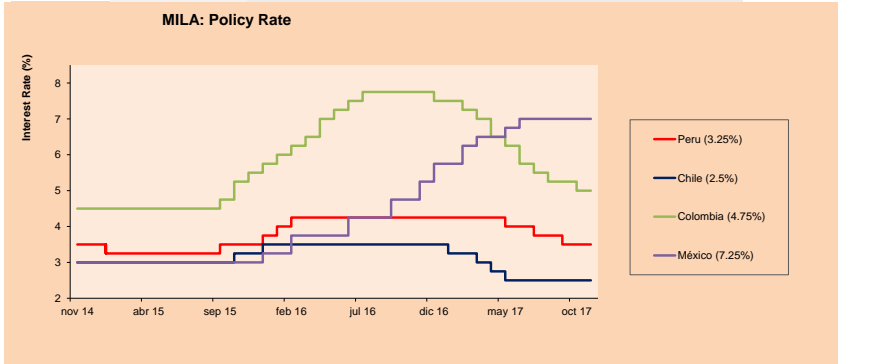
Colombia: Non-Stock Exchange Day.

Mexico: Mexico's IPC index closed today's session with a positive result of +0.22%. The sectors of the index that generated the highest results were Health (+1.66%) and Telecommunications Services (+1.13%). Finally, the stocks with the highest yields were Nemark SAB de CV (+1.95%) and Genomma Lab Internacional SAB de CV (+1.66%)



Base: 08/05/17=100
Source: Bloomberg

ETFs	Curr.	Close	1D	5D	30 D	YTD	Exchange
▼ iShares MSCI All Peru Caped Index Fund	USD	42.24	-1.08%	3.07%	6.86%	3.07%	NYSE Arca
▲ iShares MSCI Chile Capped	USD	54.63	0.32%	4.74%	25.01%	4.74%	BATS
▲ Global X MSCI Colombia	USD	15.07	0.52%	4.38%	8.65%	4.38%	NYSE Arca
- iShares MSCI Mexico Capped	USD	50.98	0.00%	3.43%	1.90%	3.43%	NYSE Arca
- iShares MSCI Emerging Markets	USD	49.13	0.00%	4.27%	6.94%	4.27%	NYSE Arca
▲ Vanguard FTSE Emerging Markets	USD	47.67	0.02%	4.27%	8.45%	4.27%	NYSE Arca
▲ iShares Core MSCI Emerging Markets	USD	59.29	0.07%	4.20%	6.91%	4.20%	NYSE Arca
▲ iShares JP Morgan Emerging Markets Bonds	USD	62.66	0.13%	3.13%	5.36%	3.13%	BATS
▼ Morgan Stanley Emerging Markets Domestic	USD	7.93	-0.13%	2.99%	2.85%	2.99%	New York



Source: Bloomberg

Capital Market Laboratory Coordinator: Economist Bruno Bellido Anicama
Support: Sebastián Butters, Kaori Olulio, Jairo Trujillo, Mario Villar
e-mail: pulsobursatil@ulima.edu.pe
facebook: www.facebook.com/pulsobursatil.ul
Phone number : 4376767 Anexx: 35340 - 35310

PULSO BURSÁTIL

WORLD

Main Indices	Close	1 D*	5 D*	1 M*	YTD*	Market Cap. (US\$ Mill.)
▼ Dow Jones (USA)	25,283.00	-0.05%	2.28%	3.92%	2.28%	6,944,642
▲ Standard & Poor's 500 (USA)	2,747.71	0.17%	2.77%	3.63%	2.77%	24,313,618
▲ NASDAQ Composite (USA)	7,157.39	0.29%	3.68%	4.64%	3.68%	11,239,146
▲ Stoxx EUROPE 600 (Europe)	398.41	0.27%	2.37%	2.35%	2.37%	8,869,893
▲ DAX (Germany)	13,367.78	0.36%	3.48%	1.63%	3.48%	1,043,537
▼ FTSE 100 (United Kingdom)	7,696.51	-0.38%	0.11%	4.09%	0.11%	1,566,201
▲ CAC 40 (France)	5,487.42	0.30%	3.29%	1.64%	3.29%	1,288,839
▼ IBEX 35 (Spain)	10,398.40	-0.12%	3.53%	0.75%	3.53%	550,586
▲ MSCI AC Asia Pacific Index	179.88	0.35%	2.47%	6.36%	3.49%	15,325,707
▲ HANG SENG (Hong Kong)	30,899.53	0.28%	3.29%	7.89%	3.29%	3,127,825
▲ SHANGHAI SE Comp. (China)	3,408.48	0.52%	3.00%	3.93%	3.00%	5,270,471
▲ NIKKEI 225 (Japan)	23,714.53	0.89%	3.59%	3.96%	4.17%	3,719,776
▲ BOVESPA (Brazil)	79,378.53	0.39%	3.90%	9.14%	3.90%	758,980
▲ MERVAL (Argentina)	32,351.20	0.50%	7.60%	20.53%	7.60%	124,289

*Legend: Variation 1D: 1 Day; 5D: 5 Days; 1M: 1 Month; YTD: Var.% 12/31/16 to date

Equity

Wall Street (Stocks from S&P 500)

Largest gains	Curr.	Price	▲ %	Exchange	Largest losses	Curr.	Price	▼ %	Exchange
KSS UN	USD	56.9	4.67	New York	LB UN	USD	48.64	-3.42	New York
ALB UN	USD	137.45	4.35	New York	REGN UW	USD	372.52	-3.27	NASDAQ GS
WU UN	USD	21.49	4.32	New York	ULTA UW	USD	231.14	-2.87	NASDAQ GS
ISRG UW	USD	391.86	3.39	NASDAQ GS	MAT UW	USD	15.81	-2.77	NASDAQ GS

Europe (Stocks from STOXX EUROPE 600)

Largest gains	Curr.	Price	▲ %	Exchange	Largest losses	Curr.	Price	▼ %	Exchange
GEN DC	DKK	1151.5	4.68	Copenhagen	SNH GY	EUR	0.5336	-10.68	Xetra
GLPG NA	EUR	84.98	4.53	EN Amsterdam	HIK LN	EUR	1079	-4.43	Londres
BBA LN	Gbp	358.4	4.13	Londres	FINGB SS	Gbp	16.542	-4.30	Stockholm
NESTE FH	EUR	54.72	4.07	Helsinki	CPI LN	Gbp	408.3	-3.57	Londres

Global Overview

United States:

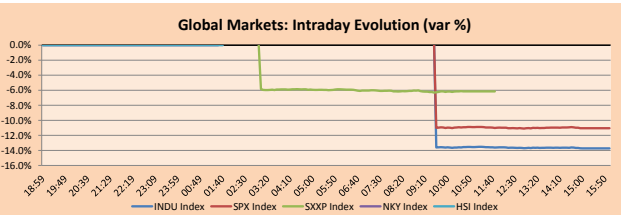
The US stock market ended the day with mixed results, due to the delivery of profits and dividends, boosting companies in the health sector. On the corporate side, the price of GoPro shares fell, after the revenue reports fell untimely. The camera company was forced to lower the price of their products to motivate their sales, despite this measure sales were low. In greater detail, the company fell -11.20%, hours before the price had fallen to -33%, being a reaction to the report, which also dealt with a decrease of more than 20% of the workforce. On the other hand, the company Western Union Co. like Seagate Technology Plc. They obtained high profits, due to speculation that both companies have links to one of the most popular digital currencies called Ripple. Finally, the price of Brent crude rose +0.34%, reaching a price of 67.845, climbing to a maximum of almost three years, following the anti-government protests in Iran, the reduction of crude reserves and the freezing of winter weather in the northeast of the United States and the high levels of compliance with the OPEC plan.

Europe:

The European stock market finished the day today with mixed results among its main indices. UK stocks were negatively affected by falls in the shares of retailers and home builders. This led the FTSE 100 index to close at -0.36%, eliminating some of the gains of last week, when the index closed at +0.5%. Retail sales were under pressure after Mothercare PLC, a baby care retailer, announced that comparable sales for a 12-week period through December 30, 2017 fell both in the UK and internationally. Also, a report by the British Retail Consortium showed that British store prices fell by 0.6% in December 2017 compared to the previous year, as retailers offered discounts at the beginning of the month. On the other hand, the shares of construction companies fell after it was announced that housing prices fell by 0.6% in December 2017 compared to the previous month, marking the first fall since June. In Eurozone news, the indicator of economic sentiment, which contains business and consumer confidence, rose in December to 116 from 114.6 reached in November, reaching its highest level since October 2000.

Asia:

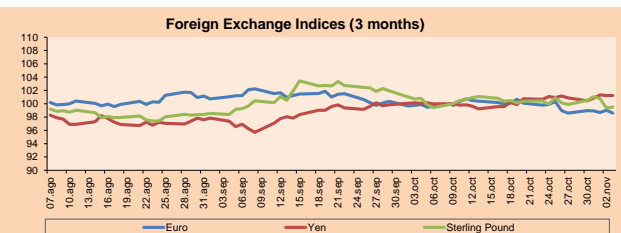
The Asian stock market with positive results among its main indices. In the first place, the Japanese market closed today for the "Adult Day" holiday. On the other hand, the indexes in Hong Kong, China and Taiwan ended up in positive territory despite opening low, affected by the new regulatory permits in China. The Taiwan index "Taiex 19999" closed with a maximum of almost 28 years, while the Shanghai composite index (SHCOMP) ended its seventh consecutive session of gains. And the Hang Seng index "HSI" of Hong Kong won thanks to a jump in the Chinese real estate developers. Regarding China, regulators have sent a clear message about the fundamentals and transparency that commercial banks should follow this year. Which caused a fall in stocks in the main Chinese banks. Regarding South Korea, the stock market closed with the best results in the region. The Korean reference index Kospi closed higher than the Korean won, which depreciated by 1% against the dollar. Traders attributed the weakness of the currency to central bank intervention, as the won had been at its strongest against the dollar since 2014. On the other hand, in Australia, the Australian benchmark "S & P / ASX 200" reached a new maximum of 10 years helped by profits from banks.



Source: Bloomberg

Currency	Price	1 D*	5 D*	1 M*	YTD*
▼ Euro	1.1967	-0.52%	-0.37%	1.65%	-0.32%
▼ Yen	113.0900	0.04%	0.41%	-0.34%	0.35%
▼ Sterling Pound	1.3568	-0.02%	0.48%	1.33%	0.41%
▼ Yuan	6.4998	0.18%	-0.11%	-1.83%	-0.11%
▲ Hong Kong Dollar	7.8209	0.02%	0.09%	0.19%	0.09%
▲ Brazilian Real	3.2369	0.24%	-2.16%	-1.73%	-2.16%
▲ Argentine Peso	18.0186	0.72%	2.12%	10.05%	2.12%

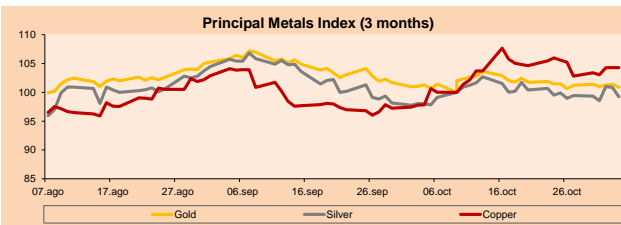
*Legend: Variation 1D: 1 Day; 5D: 5 Days; 1M: 1 Month; YTD: Var.% 12/31/16 to date



Base: 09/10/17=100
Source: Bloomberg

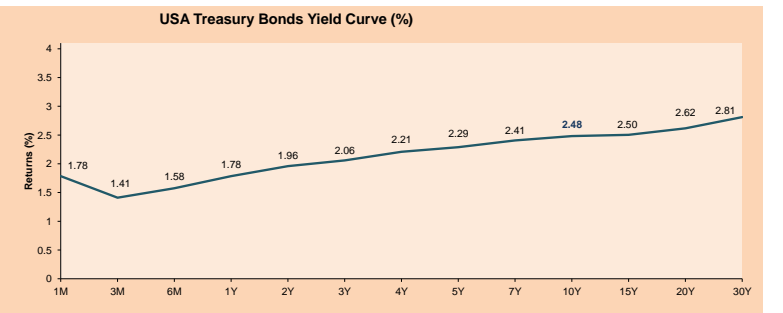
Commodities	Close	1 D*	5 D*	1 M*	YTD*
▲ Oro (US\$ Oz. T) (LME)	1,320.47	0.06%	1.38%	5.76%	1.34%
▲ Plata (US\$ Oz. T) (LME)	17.14	0.02%	1.10%	8.06%	1.16%
▲ Cobre (US\$ TM) (LME)	7,078.50	0.00%	-1.78%	8.29%	-1.78%
▲ Zinc (US\$ TM) (LME)	3,380.00	0.00%	1.27%	9.39%	1.27%
▲ Petroleo WTI (US\$ Barril) (NYM)	61.90	0.75%	2.45%	7.76%	2.45%
▲ Estano (US\$ TM) (LME)	20,015.00	0.00%	-0.40%	2.53%	-0.40%
▲ Plomo (US\$ TM) (LME)	2,546.75	0.00%	2.50%	4.07%	2.50%
▲ Molibdeno (US\$ TM) (LME)	15,638.00	0.00%	0.00%	-0.01%	0.00%
▼ Azúcar #11 (US\$ Libra) (NYB-ICE)	14.78	-1.99%	-2.51%	5.20%	-2.51%
▼ Cacao (US\$ TM) (NYB-ICE)	1,914.00	1.00%	1.16%	1.43%	1.16%
▼ Café Arábica (US\$ TM) (NYB-ICE)	125.15	-2.57%	-0.83%	2.08%	-0.83%

*Lenda: Variación 1D: 1 Día; 5D: 5 Días; 1M: 1 Mes; YTD: Var.% 31/12/15 a la fecha



Base: 09/10/17=100
Source: Bloomberg

ETFs	Curr.	Close	1D	5D	30 D	YTD	Exchange
SPDR S&P 500 ETF TRUST	USD	273.92	0.18%	2.65%	3.17%	2.65%	NYSE Arca
ISHARES MSCI EMERGING MARKET	USD	49.13	0.00%	4.27%	6.94%	4.27%	NYSE Arca
ISHARES IBOXX USD HIGH YIELD	USD	87.90	-0.08%	0.73%	0.63%	0.73%	NYSE Arca
FINANCIAL SELECT SECTOR SPDR	USD	28.37	-0.14%	1.65%	1.29%	1.65%	NYSE Arca
VANECK VECTORS GOLD MINERS E	USD	23.42	-1.06%	0.77%	8.03%	0.77%	NYSE Arca
ISHARES RUSSELL 2000 ETF	USD	155.03	0.16%	1.69%	2.39%	1.69%	NYSE Arca
SPDR GOLD SHARES	USD	125.31	-0.02%	1.34%	5.76%	1.34%	NYSE Arca
ISHARES 20+ YEAR TREASURY BO	USD	125.63	-0.06%	-0.97%	-0.84%	-0.97%	NASDAQ GM
POWERSHARES QQQ TRUST SERIES	USD	162.55	0.39%	4.36%	5.07%	4.36%	NASDAQ GM
ISHARES NASDAQ BIOTECHNOLOGY	USD	108.37	-1.33%	1.50%	2.17%	1.50%	NASDAQ GM
ENERGY SELECT SECTOR SPDR	USD	75.42	0.60%	4.37%	8.95%	4.37%	NYSE Arca
PROSHARES ULTRA VIX ST FUTUR	USD	8.77	-2.45%	-14.10%	-27.28%	-14.10%	NYSE Arca
UNITED STATES OIL FUND LP	USD	12.38	0.57%	3.08%	7.75%	3.08%	NYSE Arca
ISHARES MSCI BRAZIL ETF	USD	42.67	-0.40%	5.49%	9.38%	5.49%	NYSE Arca
SPDR S&P OIL & GAS EXP & PR	USD	38.77	0.60%	4.28%	9.83%	4.28%	NYSE Arca
UTILITIES SELECT SECTOR SPDR	USD	51.81	0.94%	-1.65%	-7.27%	-1.65%	NYSE Arca
ISHARES US REAL ESTATE ETF	USD	79.74	0.57%	-1.57%	-2.26%	-1.57%	NYSE Arca
SPDR S&P BIOTECH ETF	USD	85.31	-1.99%	0.52%	1.64%	0.52%	NYSE Arca
ISHARES IBOXX INVESTMENT GRA	USD	120.88	-0.01%	-0.56%	-0.08%	-0.56%	NYSE Arca
ISHARES JP MORGAN US EMERGI	USD	116.51	-0.18%	0.35%	0.85%	0.35%	NASDAQ GM
REAL ESTATE SELECT SECT SPDR	USD	32.49	0.68%	-1.37%	-2.14%	-1.37%	NYSE Arca
ISHARES CHINA LARGE-CAP ETF	USD	48.71	0.35%	5.50%	6.96%	5.50%	NYSE Arca
CONSUMER STAPLES SPDR	USD	57.07	0.25%	0.32%	0.85%	0.32%	NYSE Arca
VANECK VECTORS JUNIOR GOLD M	USD	33.95	-1.54%	-0.53%	11.94%	-0.53%	NYSE Arca
SPDR BBG BARC HIGH YIELD BND	USD	36.99	-0.11%	0.74%	0.63%	0.74%	NYSE Arca
VANGUARD REIT ETF	USD	81.47	0.52%	-1.82%	-3.05%	-1.82%	NYSE Arca



Source: Bloomberg

Capital Market Laboratory Coordinator: Economist Bruno Bellido Anicama
Support: Sebastián Butters, Kaori Olulio, Jairo Trujillo, Mario Villar
e-mail: pulsobursatil@ulima.edu.pe
facebook: www.facebook.com/pulsobursatil.ul
Phone number : 4376767 Anexos: 35340 - 35310

PULSO BURSÁTIL

LIMA

Stocks

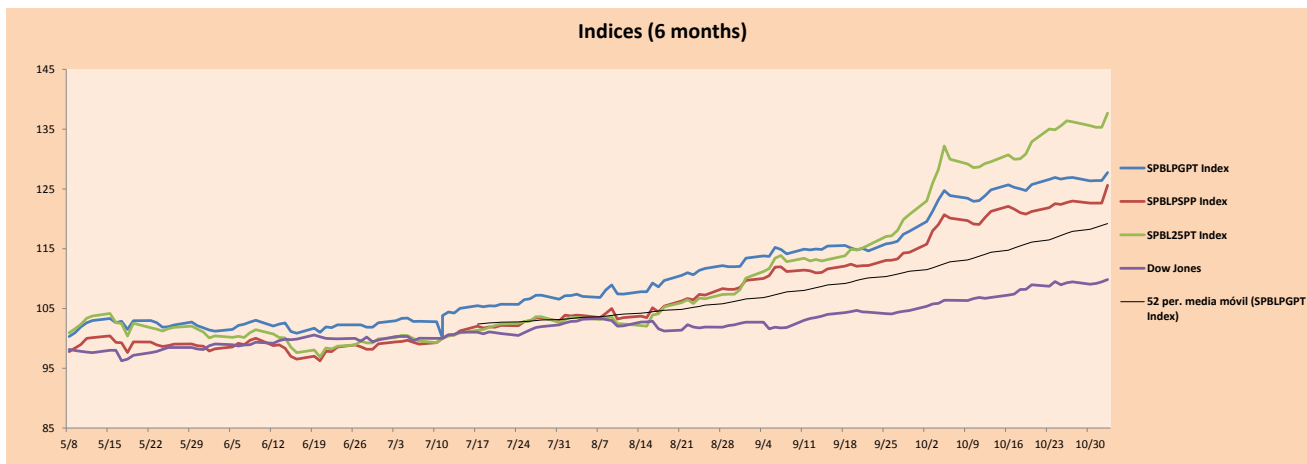
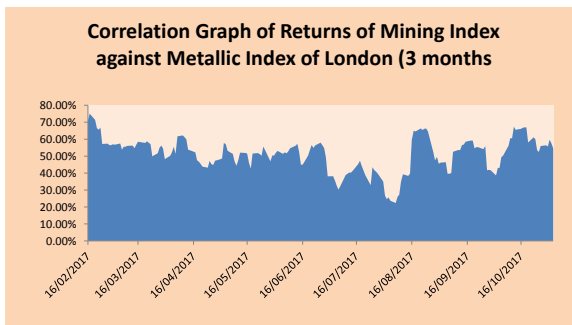
Ticker	Currency	Price	1D*	5D*	30D*	YTD*	Frequency	Volume (US\$)	Beta	Dividend Yield (%)	Price Earning	Market Cap. (M US\$)	Economic Sector*	Index Weight
▲ ALICORC1 PE**	S/.	11.20	0.45%	5.66%	9.59%	5.66%	105.26%	1,264,482	0.94	1.25	23.49	2,972.43	Industrial	3.53%
▲ ATACOBC1 PE**	S/.	0.71	1.43%	4.41%	9.23%	4.41%	105.26%	117,197	2.38	0.00	-	213.46	Mining	1.02%
- BACKUSI1 PE**	S/.	18.30	0.00%	-0.60%	-1.08%	-0.60%	84.21%	9,115	0.42	0.00	5.31	9,049.60	Industrial	0.82%
▼ BAP PE**	US\$	220.30	-1.21%	5.91%	6.90%	5.91%	105.26%	784,808	1.04	3.90	-	17,506.53	Diverse	5.82%
▼ BVN PE**	US\$	14.31	-3.77%	1.35%	8.66%	1.35%	105.26%	386,811	1.14	0.58	-	3,938.78	Mining	5.88%
▼ CASAGRC1 PE**	S/.	6.10	0.00%	-1.45%	-0.49%	-1.45%	105.26%	31,325	0.73	6.62	16.29	159.78	Agricultural	1.31%
▼ CONTINC1 PE**	S/.	4.35	-0.68%	4.82%	8.48%	4.82%	105.26%	109,155	0.82	3.40	15.99	6,605.38	Finance	2.85%
▲ CORAREI1 PE**	S/.	0.74	1.37%	2.78%	-2.63%	2.78%	105.26%	33,625	1.56	5.05	9.89	292.27	Industrial	1.72%
▼ CPACASC1 PE**	S/.	8.05	-0.62%	-1.23%	0.00%	-1.23%	105.26%	262,804	0.64	4.35	30.44	1,068.96	Industrial	2.38%
- CVERDEC1 PE**	US\$	30.80	0.00%	3.70%	11.59%	3.70%	105.26%	223,402	1.37	0.00	43.62	10,781.72	Mining	5.25%
- ENGEPEC1 PE**	S/.	2.00	0.00%	1.01%	-4.76%	1.01%	84.21%	8,073	0.90	3.19	19.17	1,799.33	Public Services	1.44%
▼ ENDISPC1**	S/.	5.60	-0.71%	-0.71%	0.90%	-0.71%	73.68%	226,271	0.97	3.40	12.09	1,112.00	Public Services	0.98%
▼ FERREYC1 PE**	S/.	2.58	-0.39%	1.18%	3.20%	1.18%	105.26%	272,704	1.17	4.98	9.33	813.78	Diverse	4.90%
▲ GRAMONC1 PE**	S/.	1.86	0.54%	-0.53%	-5.10%	-0.53%	105.26%	219,721	1.57	0.00	11.25	381.77	Diverse	4.05%
▲ IFS PE**	US\$	39.50	1.28%	2.60%	5.61%	2.60%	100.00%	1,153,214	0.59	3.29	13.94	4,467.88	Diverse	7.22%
▲ INRETC1 PE**	US\$	21.00	0.96%	0.00%	2.44%	0.00%	105.26%	518,300	1.00	0.93	25.29	2,158.95	Diverse	5.28%
▲ LUSURC1 PE**	S/.	12.10	0.58%	0.41%	0.41%	0.41%	105.26%	98,422	0.52	5.12	14.17	1,832.24	Public Services	1.81%
- MILPOC1 PE**	S/.	4.86	0.00%	5.65%	6.35%	5.65%	94.74%	455,973	1.14	17.63	10.99	2,002.34	Mining	1.56%
▼ MINSUR1 PE**	S/.	1.96	0.51%	8.89%	13.29%	8.89%	100.00%	257,407	1.68	3.52	6.85	1,757.16	Mining	3.09%
▼ PML PE**	US\$	0.32	-0.62%	0.00%	9.22%	0.00%	105.26%	47,334	1.26	0.00	-	83.21	Mining	2.12%
▲ RELAPAC1 PE**	S/.	0.35	1.47%	11.29%	19.79%	11.29%	105.26%	100,918	1.40	0.00	5.31	379.23	Industrial	2.12%
▲ SCCO PE**	US\$	49.39	0.37%	3.85%	17.12%	3.85%	94.74%	6,819	1.19	32.07	38,179.88	Mining	2.14%	
▼ SIDERC1 PE**	S/.	0.49	-2.02%	1.04%	3.63%	1.04%	100.00%	23,172	1.72	0.00	4.42	185.19	Industrial	1.43%
▼ TV PE**	US\$	1.24	-1.59%	3.33%	21.57%	3.33%	105.26%	112,799	1.46	0.00	-	1,023.90	Mining	2.93%
- UNACEMC1 PE**	S/.	2.94	0.00%	-2.00%	1.03%	-2.00%	105.26%	136,762	0.74	1.77	31.56	1,505.29	Industrial	3.00%
▲ VOLCABC1 PE**	S/.	1.39	2.21%	5.30%	4.51%	5.30%	105.26%	11,826,615	1.83	1.87	18.03	3,087.77	Mining	5.90%

Quantity of shares: 26
 Source: Bloomberg, Economática
 * Bloomberg Industry Classification System
 ** PER is used in the stock market and original currency of the instrument
 *Legend: Variation 1D: 1 Day; 5D: 5 Days, 1M: 1 Month; YTD: Var.% 12/31/16 to date

Sectorial Indices

	Close	1D*	5D*	30D*	YTD*	Beta
▼ Mining Index	365.13	-0.65%	2.71%	11.72%	2.71%	1.67
▲ Consumer Index	928.67	0.52%	3.00%	5.53%	3.00%	0.41
▼ Industrial Index	236.07	-0.16%	0.05%	1.12%	0.05%	0.90
▼ Banking and Financial Index	1,120.50	-0.88%	4.80%	6.03%	4.80%	0.88
▼ Construction Index	262.38	-0.11%	-1.04%	-0.70%	-1.04%	0.85
- Services Index	418.36	0.00%	0.43%	1.39%	0.43%	0.28
▼ Juniors Index	43.73	-2.41%	-0.23%	7.74%	-0.23%	1.22
- Electric Index	408.43	0.00%	0.43%	1.39%	0.43%	0.28

*Legend: Variation 1D: 1 Day; 5D: 5 Days, 1M: 1 Month; YTD: Var.% 12/31/16 to date



Source: Bloomberg

Capital Market Laboratory Coordinator: Economist Bruno Bellido Anicama
 Support: Sebastián Butters, Kaori Olulo, Jairo Trujillo, Mario Villar
 e-mail: pulsohorsatil@ulima.edu.pe
 facebook: www.facebook.com/pulsohorsatil.ul
 Phone number : 4376767 Anexxes: 35340 - 35310

The content of this document is just for informational purposes . The information and opinions expressed should not be consider as recommendations for future decisions . Under any circumstances, the Capital Market Laboratory of University of Lima will be responsible for the use of the statements in this document.

PULSO BURSÁTIL

SOVEREIGN RATING

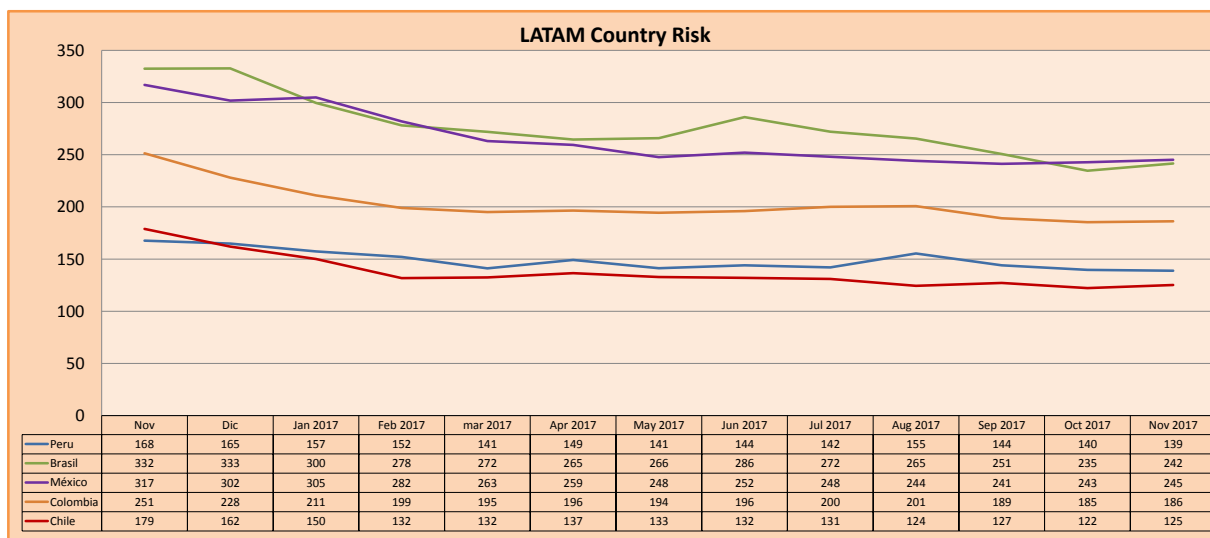
RISK RATINGS

Moody's	S&P	Fitch	
Aaa	AAA	AAA	Prime
Aa1	AA+	AA+	High credit quality
Aa2	AA	AA	
Aa3	AA-	AA-	
A1	A+	A+	Medium-high grade, with low credit risk
A2	A	A	
A3	A-	A-	
Baa1	BBB+	BBB+	Moderate Credit Risk
Baa2	BBB	BBB	
Baa3	BBB-	BBB-	
Ba1	BB+	BB+	It has speculative elements and it is subject to substantial credit risk
Ba2	BB	BB	
Ba3	BB-	BB-	
B1	B+	B+	It is considered speculative and it has high credit risk
B2	B	B	
B3	B-	B-	
Caa1	CCC+	CCC	Bad credit conditions and it is subject to high credit risk
Caa2	CCC	CCC	
Caa3	CCC-	CCC	
Ca	CC	C	Very close to default or in default
C	D	DD	
		D	

Source: Bloomberg

Latin America Credit Rating			
Clasificadora de riesgo			
Country	Moody's	Fitch	S&P
Peru	A3	BBB+	BBB+
Mexico	A3	BBB+	BBB+
Venezuela	Caa3	RD	SD
Brazil	Ba2	BB	BB
Colombia	Baa2	BBB	BBB-
Chile	Aa3	A	A+
Argentina	B2	B	B+
Panama	Baa2	BBB	BBB

Source: Bloomberg



Source: Bloomberg

Capital Market Laboratory Coordinator: Economist Bruno Bellido Anicama
 Support: Sebastián Butters, Kaori Olulo, Jairo Trujillo, Mario Villar
 e-mail: pulsobursatil@ulima.edu.pe
 facebook: www.facebook.com/pulsobursatil.ul
 Phone number : 4376767 Anexes: 35340 - 35310

The content of this document is just for informational purposes. The information and opinions expressed should not be considered as recommendations for future decisions. Under any circumstances, the Capital Market Laboratory of University of Lima will be responsible for the use of the statements in this document