



# PULSO BURSÁTIL

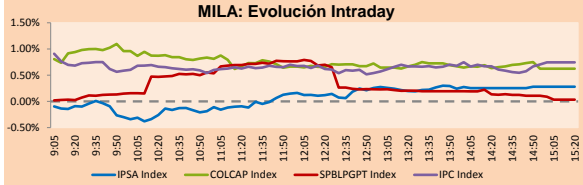
Lima, October 1, 2018

## MILA

Main Indices	Close	1 D	5 D	1 M	YTD	Market Cap. (US\$ bill)
▲ IPSA (Chile)	5,298.38	0.28%	-1.62%	0.53%	-4.78%	174.52
▲ IGPA (Chile)	26,949.41	0.24%	-1.26%	1.35%	-3.69%	234.80
▲ IGBC (Colombia)	12,556.99	0.75%	1.56%	2.47%	9.40%	118.70
▲ COLCAP (Colombia)	1,512.97	0.46%	1.38%	-1.93%	-0.04%	122.28
▲ S&P/BVL (Perú)*	19,570.45	0.03%	-0.02%	0.65%	-2.02%	110.97
▲ S&P/BVL SEL (Perú)	359.53	0.31%	0.65%	-0.26%	-2.31%	84.72
▼ S&P/BVL LIMA 25	27,111.26	-0.39%	0.32%	-2.37%	-11.88%	92.48
▲ IPC (México)	49,841.47	0.68%	0.86%	0.59%	0.99%	317.22
▼ S&P MILA 40	680.23	-0.21%	0.50%	2.64%	-6.70%	309.86

\* Market Cap. Of the last price

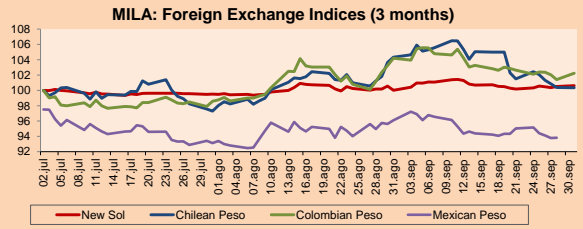
\*Legend: Variation 1D: 1 day; 5D: 5 days; 1M: 1 Month; YTD: Var%12/31/17 to date



Source: Bloomberg

Currency	Price	1D*	5D*	30 D*	YTD*
▲ New Sol (PEN)	3,3081	0.12%	0.25%	0.62%	2.17%
▼ Chilean Peso (CLP)	656.65	-0.03%	-2.04%	-3.82%	6.70%
▲ Colombian Peso (COP)	2,996.13	0.81%	0.13%	-1.88%	0.31%
▲ Mexican Peso (MXN)	18.72	0.03%	-1.28%	-1.89%	-4.75%

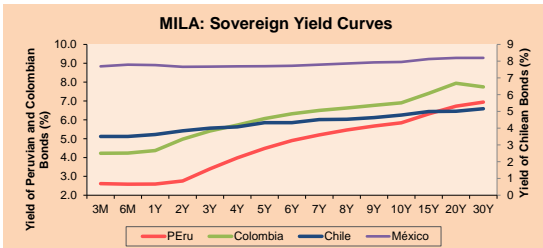
\*Legend: Variation 1D: 1 day; 5D: 5 days; 1M: 1 Month; YTD: Var%12/31/17 to date



Base: 02/07/18=100

Source: Bloomberg

Instrument	Currency	Price	Bid Yield (%)	Ask Yield (%)	Duration
PERU 4.125 08/25/2027	USD	103.052	3.74	3.69	7.42
PERU 7.125 03/30/19	USD	102.459	2.08	2.06	0.48
PERU 7.35 07/21/25	USD	122.563	3.61	3.55	5.47
PERU 8.75 11/21/33	USD	148.001	4.40	4.36	9.46
PERU 6.55 03/14/37	USD	126.344	4.46	4.43	11.21
PERU 5.625 11/18/2050	USD	118.441	4.55	4.52	15.94
CHILE 2.25 10/30/22	USD	96.092	3.33	3.24	3.82
CHILE 3.875 08/05/20	USD	101.593	3.06	2.89	1.76
CHILE 3.625 10/30/2042	USD	93.037	4.10	4.06	15.45
COLOM 11.75 02/25/20	USD	111.478	3.35	3.17	1.30
COLOM 11.85 03/09/28	USD	155.103	4.62	4.55	6.48
COLOM 10.375 01/28/33	USD	152.472	5.19	5.11	8.68
COLOM 7.375 09/18/37	USD	126.203	5.20	5.17	11.16
COLOM 6.125 01/18/41	USD	113.146	5.15	5.11	12.64
MEX 4 10/02/23	USD	100.725	3.87	3.81	4.50
MEX5.55 01/45	USD	106.101	5.137	5.112	14.05



Source: Bloomberg

## Equity

Largest gains	Exchange	Amt.	Price	▲%
ESVAL-C	Santia.	CLP	0.02	15.00
BANMEDICA	Santia.	CLP	2127.20	12.08
CAUCHO11	Lima	PEN	1.10	6.80
DNT	Lima	USD	0.05	4.00

Per Turnover	Exchange	Amount (US\$)
ECOPETROL	Colomb.	15,048,886
SQM-B	Santia.	10,610,470
COPEC	Santia.	10,152,028
BSANTANDER	Santia.	7,599,569
CMPC	Santia.	6,315,518

Largest losses	Exchange	Amt.	Price	▼%
COLO COLO	Santia.	CLP	290.00	-7.64
ATACOCB1	Lima	PEN	0.42	-6.25
SCCO	Lima	USD	42.85	-3.71
ETB	Colomb.	COP	323.00	-3.29

Per Volume	Exchange	Volume
ESVAL-C	Santia.	250,085,192
VAPORES	Santia.	97,990,306
BSANTANDER	Santia.	94,938,717
CHILE	Santia.	33,980,940
COLBUN	Santia.	22,908,646

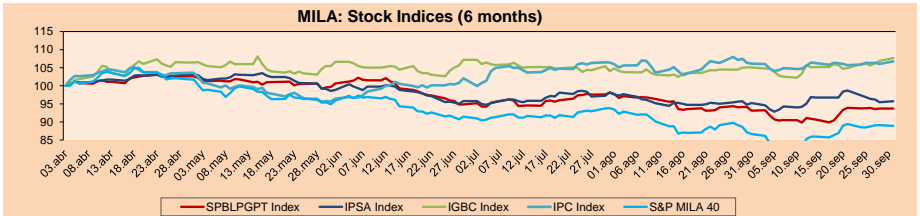
## MILA

**Peru:** The General Index of the BVL of Peru ended today's session with a positive result of +0.03%. The index maintains an accumulated annual negative trend of -2.02% in local currency, while the adjusted yield in dollars amounts to -4.10%. Then, the S&P/BVL Peru SEL obtained a positive return of +0.31%, while the S&P/BVL LIMA 25 decreased by -0.39%. The spot PEN reached S/3.3081.

**Chile:** The IPSA index ended the day with a positive return of +0.28%. The sectors of the index with the most positive results were Materials (+1.24%) and Real Estate (+0.75%). On the other hand, the values with the highest results were Embotelladora Andina SA (+2.89%) and CAP SA (+2.10%).

**Colombia:** The COLCAP index closed the session with positive results of +0.46%. The sectors with the highest performance were Energy (+2.98%) and Industrial (+0.21%). In addition, stocks with higher yields Canacol Energy Ltd (+3.05%) and Ecopetrol SA (+2.98%).

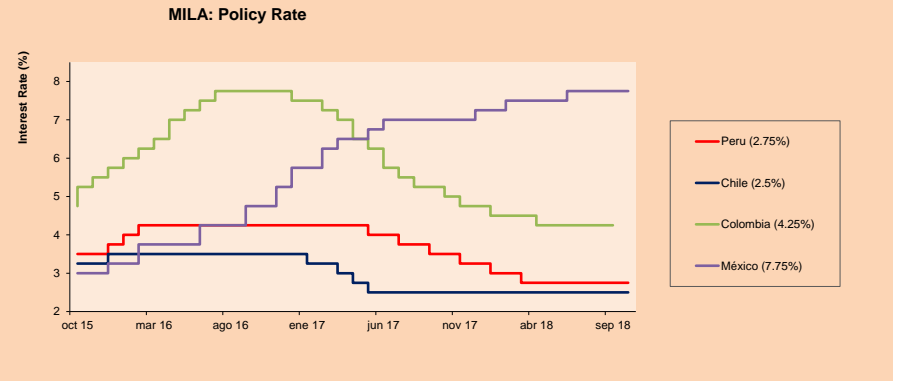
**Mexico:** Mexico's IPC index closed today's session with a positive return of +0.68%. The sectors of the index that generated the most positive results were Telecommunications Services (+1.12%) and Financial Services (+0.96%). Finally, the stocks with the highest yields were Banco Santander México SA (+4.87%) and Promotora and Infra Operator (+2.88%).



Base: 04/04/18=100

Source: Bloomberg

ETFs	Curr.	Close	1D	5D	30 D	YTD	Exchange
▲ iShares MSCI All Peru Caped Index Fund	USD	37.1	0.49%	0.35%	0.38%	-9.47%	NYSE Arca
- iShares MSCI Chile Capped	USD	45.31	0.00%	-0.74%	4.55%	-13.13%	Cboe BZX
▲ Global X MSCI Colombia	USD	13.94	0.80%	1.38%	-0.57%	-3.44%	NYSE Arca
▲ iShares MSCI Mexico Capped	USD	51.61	0.74%	2.20%	2.52%	4.71%	NYSE Arca
▲ iShares MSCI Emerging Markets	USD	42.93	0.02%	0.44%	-0.56%	-8.59%	NYSE Arca
▲ Vanguard FTSE Emerging Markets	USD	41.1	0.24%	-0.44%	-2.24%	-10.48%	NYSE Arca
▼ iShares Core MSCI Emerging Markets	USD	51.77	-0.02%	0.47%	-1.03%	-9.02%	NYSE Arca
▲ iShares JP Morgan Emerging Markets Bonds	USD	59.31	0.02%	0.99%	0.24%	-2.39%	Cboe BZX
▲ Morgan Stanley Emerging Markets Domestic	USD	6.77	0.45%	0.15%	0.15%	-12.08%	New York



Source: Bloomberg

Capital Market Laboratory Coordinator: Economist Bruno Bellido Anicama  
 Support: Lith Fernandez, Samuel Machacuy, Maria Pia Quijano, Jorge Retamozo  
 e-mail: pulsobursatil@ulima.edu.pe  
 facebook: www.facebook.com/pulsobursatil.ul  
 Phone number : 4376767 Annexes: 35340 - 35310

# PULSO BURSÁTIL

## WORLD

Main Indices	Close	1 D*	5 D*	1 M*	YTD*	Market Cap. (US\$ Mill.)
▲ Dow Jones (USA)	26,651.21	0.73%	0.34%	2.64%	7.82%	7,379,716
▲ Standard & Poor's 500 (USA)	2,924.59	0.36%	0.18%	0.80%	9.39%	25,540,478
▲ NASDAQ Composite (USA)	8,037.30	-0.11%	0.55%	-0.89%	16.43%	12,584,274
▲ Stoxx EUROPE 600 (Europe)	383.94	0.20%	0.47%	0.44%	-1.35%	8,978,615
▲ DAX (Germany)	12,339.03	0.75%	-0.10%	-0.20%	-4.48%	986,990
▲ FTSE 100 (United Kingdom)	7,495.67	-0.19%	0.50%	0.85%	-2.50%	1,602,805
▲ CAC 40 (France)	5,506.82	0.24%	0.56%	1.85%	3.66%	1,405,367
▲ IBEX 35 (Spain)	9,407.00	0.19%	-1.11%	0.08%	-6.34%	507,483
▲ MSCI AC Asia Pacific Index	164.96	-0.23%	-0.37%	-0.38%	-5.09%	17,952,368
▲ HANG SENG (Hong Kong)	27,788.52	0.26%	1.13%	-0.36%	-7.12%	2,628,236
▲ SHANGHAI SE Comp. (China)	2,821.35	1.06%	3.37%	3.53%	-14.69%	4,386,758
▲ NIKKEI 225 (Japan)	24,245.76	0.52%	1.57%	6.04%	6.50%	3,588,089
▲ BOVESPA (Brazil)	78,623.66	-0.91%	0.82%	2.54%	2.91%	602,834
▲ Merval (Argentina)	32,584.94	-2.62%	-1.74%	11.24%	8.38%	96,697

\*Legend: Variation 1D: 1 Day; 5D: 5 Days; 1M: 1 Month; YTD: Var.% 12/31/17 to date

## Equity

Alemania (Acciones del DAX Index)

Largest gains	Curr.	Price	▲ %	Exchange	Largest losses	Curr.	Price	▼ %	Exchange
LINU GY	EUR	216.4	6.23	Xetra	LHA GY	EUR	20.74	-1.98	Xetra
FME GY	EUR	91.42	3.21	Xetra	RWE GY	EUR	20.96	-1.36	Xetra
WDI GY	EUR	192.45	3.08	Xetra	DBK GY	EUR	9.713	-1.17	Xetra
IFX GY	EUR	19.99	2.15	Xetra	BAYN GY	EUR	75.84	-0.88	Xetra

Europe (Stocks from STOXX EUROPE 600)

Largest gains	Curr.	Price	▲ %	Exchange	Largest losses	Curr.	Price	▼ %	Exchange
LINU GY	EUR	216.4	6.23	Xetra	RYA ID	EUR	11.48	-12.50	Dublin
INDV LN	GBP	193.25	4.94	Londres	EZJ LN	GBP	1222	-7.00	Londres
MONC IM	EUR	38.8	4.59	Borsa Italiana	BAMI IM	EUR	2.001	-5.75	Borsa Italiana
WAF GY	EUR	110.1	4.41	Xetra	TIT IM	EUR	0.4953	-5.30	Borsa Italiana

## Global Overview:

### United States:

The US stock market ended the day with positive results, after the US and Canada reached a pact to delimit the new trilateral trade agreement called "United States-Mexico-Canada Agreement" (USMCA) will replace NAFTA. The market reacted positively to the news, considering that the new agreement does not have as many negative impacts as it was taken for granted. The Canadian government maintained a firm negotiating position until the end, which generated its exclusion for 5 weeks from the talks between the 3 countries. As part of the final agreement, signed just before the deadline, Canada agreed to grant limited access to the Canadian dairy market to the US, an access similar to the one Canada had committed to in the failed TPP. The S&P 500 closed with a variation of +0.36% in a session in which 241 companies that make up the index saw the prices of their shares fall. Regarding the DJIA index, it advanced 0.73%, driven by the shares of industrial giant Boeing (+2.79%) that is less than a dollar from its maximum price in a year and the stock has yielded 53% over that period.

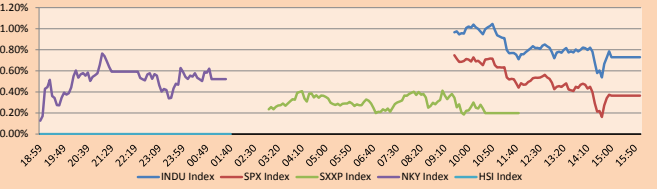
### Europe:

The European stock market ended the day today with positive results among its main indices. The market was boosted by the new trilateral trade agreement between Mexico, the US and Canada, which helped alleviate pessimism about the world trade scene, while Italian stocks continued their decline on Friday, after senior EU officials gave their opinion on the budget proposed by Italy. In other news, shares of Ryanair, the largest low-cost airline, fell 12.81% after reporting that the increase in oil prices and strikes in five European countries have had a greater than expected impact on earnings. Other airlines also performed poorly, including: Easyjet (-4.1%), Air France-KLM (-2.6%) and IAG (-1.4%), the company that owns British Airways. The vice president of the European Commission, Valdis Dombrovskis, said that his initial perspective is that the Italian budget plan contravenes the EU rules. This position had an impact on the FTSE MIB (-0.49%), which at the beginning of the session was one of the best performing European indices. The government's decision to expand its deficit also caused a rise on the yield of Italian bonds.

### Asia:

The Asian market closed the session with mixed results among its main indices, in a day marked by the holiday "National Day" in China. The Shanghai Stock Exchange and Shenzhen Stock Exchange will be closed from October 1st to October 5th for the celebrations. The Japanese market ended the session upward, the Japanese benchmark, the Nikkei 225 (+0.52%), closed at 24,245.76 points, which puts the benchmark at its highest level in 27 years. The market was positively impacted by the weakening of the yen, which helped to improve the prospects of export companies' income, and the news of the agreement between Canada and the US, which will keep NAFTA as a trilateral pact. The Japanese currency is at its lowest level in 11 months, at a price of 113.94 yen per dollar at the close of the Japanese market. The quarterly survey of business sentiment, "tankan", prepared by the Bank of Japan and published on Monday, indicates that the big manufacturers estimated an exchange rate of 107.4 yen per dollar, for the financial period 2018/2019. The revision of the exchange rate estimate would allow companies that repatriate their income to update their earnings estimates upwards.

Global Markets: Intraday Evolution (var %)



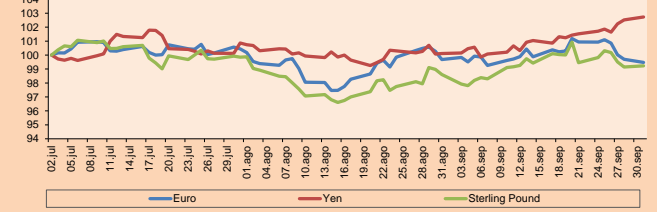
Source: Bloomberg

## Currency

	Price	1 D*	5 D*	1 M*	YTD*
▼ Euro	1.1578	-0.22%	-1.45%	-0.21%	-3.56%
▲ Yen	113.9300	0.20%	1.00%	2.61%	1.10%
▲ Sterling Pound	1.3042	0.08%	-0.59%	0.63%	-3.49%
- Yuan	6.8688	0.00%	0.17%	0.55%	5.57%
▼ Hong Kong Dollar	7.8271	-0.01%	0.20%	-0.28%	0.17%
▼ Brazilian Real	4.0187	-0.76%	-1.75%	-0.87%	21.47%
▼ Argentine Peso	39.4798	-4.42%	5.83%	7.04%	111.99%

\*Legend: Variation 1D: 1 Day; 5D: 5 Days; 1M: 1 Month; YTD: Var.% 12/31/17 to date

Foreign Exchange Indices (3 months)



Base: 02/07/18-100

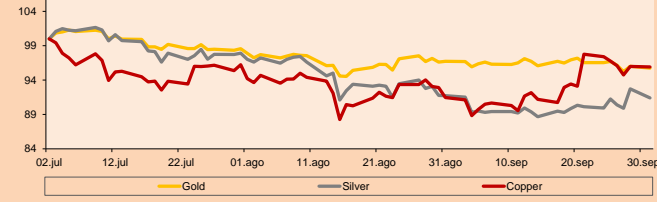
Source: Bloomberg

## Commodities

	Close	1 D*	5 D*	1 M*	YTD*
▼ Oro (US\$ Oz. T) (LME)	1,189.03	-0.29%	-0.84%	-1.03%	-8.75%
▼ Plata (US\$ Oz. T) (LME)	14.49	-1.42%	1.64%	-0.35%	-14.47%
▼ Cobre (US\$ TM) (LME)	6,258.50	-0.08%	-1.52%	4.87%	-13.16%
▲ Zinc (US\$ TM) (LME)	2,699.50	1.54%	5.37%	9.66%	-19.12%
▲ Petróleo WTI (US\$ Barril) (NYM)	75.30	2.80%	4.47%	8.55%	28.98%
▲ Estañó (US\$ TM) (LME)	18,970.00	0.58%	-0.10%	-0.43%	-5.60%
▼ Plomo (US\$ TM) (LME)	2,016.00	-0.33%	-0.93%	-2.02%	-18.87%
▼ Molibdeno (US\$ TM) (LME)	24,886.00	-0.02%	-0.02%	-0.05%	-59.14%
▲ Azúcar #11 (US\$ Libra) (NYB-ICE)	11.61	3.66%	3.38%	1.66%	-26.00%
▲ Cacao (US\$ TM) (NYB-ICE)	1,990.00	-3.26%	-10.96%	-14.81%	2.52%
▼ Café Arábica (US\$ TM) (NYB-ICE)	102.20	-0.24%	3.76%	0.39%	-25.24%

\*Legend: Variación 1D: 1 Día; 5D: 5 Días; 1M: 1 Mes; YTD: Var.% 31/12/17 a la fecha

Principal Metals Index (3 months)



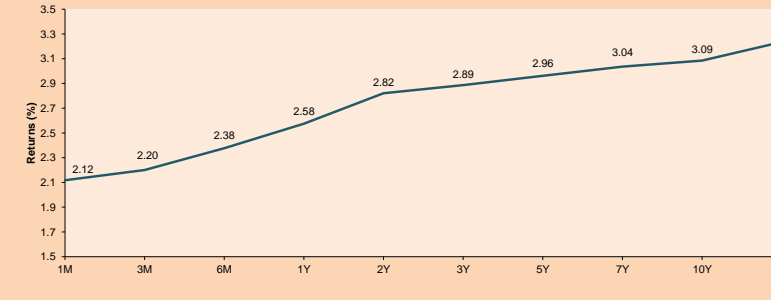
Base: 02/07/18-100

Source: Bloomberg

ETFs

	Curr.	Close	1D	5D	30 D	YTD	Exchange
SPDR S&P 500 ETF TRUST	USD	291.73	0.35%	0.24%	0.49%	9.32%	NYSE Arca
ISHARES MSCI EMERGING MARKET	USD	42.93	0.02%	0.44%	-0.56%	-8.89%	NYSE Arca
ISHARES IBOXX HIGH YLD CORP	USD	86.30	-0.16%	0.12%	-0.07%	-1.10%	NYSE Arca
FINANCIAL SELECT SECTOR SPDR	USD	27.69	0.40%	-2.57%	-2.26%	-0.79%	NYSE Arca
VANECK VECTORS GOLD MINERS E	USD	18.55	0.16%	-1.33%	0.00%	-20.18%	NYSE Arca
ISHARES RUSSELL 2000 ETF	USD	166.33	-1.32%	-2.03%	-3.87%	9.10%	NYSE Arca
SPDR GOLD SHARES	USD	112.57	-0.17%	-0.79%	-0.83%	-8.96%	NYSE Arca
ISHARES 20+ YEAR TREASURY BO	USD	116.15	-0.96%	-0.56%	-4.00%	-8.44%	NASDAQ GM
INVESCO QQQ TRUST SERIES 1	USD	186.17	0.20%	1.24%	-0.26%	19.52%	NASDAQ GM
ISHARES NASDAQ BIOTECHNOLOGY	USD	121.17	-0.63%	1.01%	-0.83%	13.49%	NASDAQ GM
ENERGY SELECT SECTOR SPDR	USD	76.79	1.39%	0.77%	3.16%	6.27%	NYSE Arca
PROSHARES ULTRA VIX ST FUTUR	USD	36.12	-1.85%	-1.90%	-14.10%	-29.25%	NYSE Arca
UNITED STATES OIL FUND LP	USD	15.95	2.77%	4.59%	8.43%	32.81%	NYSE Arca
ISHARES MSCI BRAZIL ETF	USD	33.71	-0.06%	2.81%	3.98%	-16.65%	NYSE Arca
SPDR S&P OIL & GAS EXP & PR	USD	43.74	1.04%	0.85%	3.31%	17.64%	NYSE Arca
UTILITIES SELECT SECTOR SPDR	USD	52.47	-0.34%	-0.23%	-1.87%	-0.40%	NYSE Arca
ISHARES US REAL ESTATE ETF	USD	79.36	-0.82%	-1.38%	-4.59%	-2.04%	NYSE Arca
SPDR S&P BIOTECH ETF	USD	94.59	-1.34%	-2.10%	-5.54%	11.45%	NYSE Arca
ISHARES IBOXX INVESTMENT GRA	USD	114.42	-0.44%	-0.03%	-0.88%	-5.87%	NYSE Arca
ISHARES JP MORGAN USD EMERGI	USD	107.36	-0.42%	0.21%	1.19%	-7.53%	NASDAQ GM
REAL ESTATE SELECT SECT SPDR	USD	32.36	-0.77%	-0.43%	-4.40%	-1.76%	NYSE Arca
ISHARES CHINA LARGE-CAP ETF	USD	43.02	0.47%	0.89%	1.49%	-6.82%	NYSE Arca
CONSUMER STAPLES SPDR	USD	53.89	-0.07%	-0.54%	2.00%	-5.27%	NYSE Arca
VANECK VECTORS JUNIOR GOLD M	USD	27.39	0.11%	-1.86%	-0.90%	-19.75%	NYSE Arca
SPDR BBG BARG HIGH YIELD BND	USD	35.99	-0.17%	0.14%	-0.03%	-1.99%	NYSE Arca
VANGUARD REAL ESTATE ETF	USD	79.93	-0.93%	-0.30%	-4.90%	-3.68%	NYSE Arca

USA Treasury Bonds Yield Curve (%)



Source: Bloomberg

Capital Market Laboratory Coordinator: Economist Bruno Bellido Anicama  
Support: Lith Fernandez, Samuel Machacuay, Maria Pia Quijano, Jorge Retamozo  
e-mail: pulsohorsatil@ulima.edu.pe  
facebook: www.facebook.com/pulsohorsatil  
Phone number : 4376767 Annexes: 35340 - 35310

# PULSO BURSÁTIL

## LIMA

### Stocks

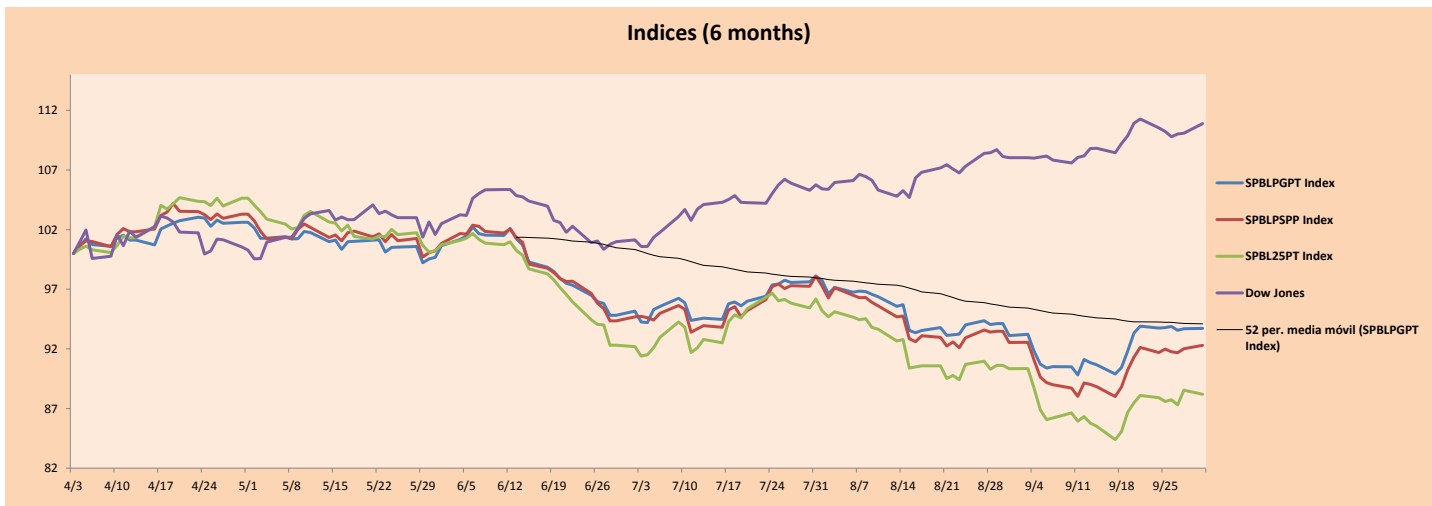
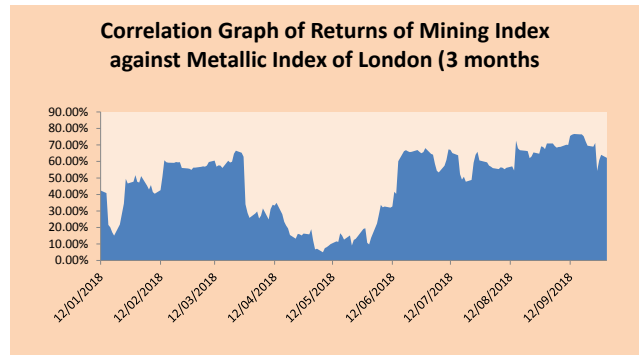
	Ticker	Currency	Price	1D*	5D*	30D*	YTD*	Frequency	Volume (US\$)	Beta	Dividend Yield (%)	Price Earning	Market Cap. (M US\$)	Economic Sector*	Index Weight	
-	ALICORC1 PE**	S/.	10.55	0.00%	2.83%	-3.21%	-0.47%	100.00%	512,262	0.69	2.27	19.01	2,721.25	Industrial	3.53%	
▼	ATACOCB1 PE**	S/.	0.42	-6.25%	0.24%	7.69%	-38.24%	100.00%	4,334	1.62	0.00	-	119.95	Mining	1.02%	
▼	BACKUS1 PE**	S/.	22.49	-0.04%	0.18%	2.13%	22.16%	70.00%	2,189	0.39	4.94	9.16	8,993.10	Industrial	0.82%	
▲	BAP PE**	US\$	226.51	1.57%	0.90%	4.45%	8.90%	100.00%	163,412	1.07	4.04	-	18,066.77	Diverse	5.82%	
▲	BVN PE**	US\$	13.44	1.05%	-0.07%	7.52%	-4.82%	95.00%	5,367	1.65	0.43	-	3,698.94	Mining	5.88%	
▲	CASAGRC1 PE**	S/.	4.00	3.90%	5.26%	2.56%	-35.38%	100.00%	2,747	0.97	0.47	173.80	101.85	Agricultural	1.31%	
-	CONTINC1 PE**	S/.	3.98	0.00%	-0.50%	-5.24%	5.43%	85.00%	101,499	0.46	3.57	15.12	6,459.00	Finance	2.85%	
-	CORARE1 PE**	S/.	0.68	0.00%	-1.45%	-1.45%	-5.56%	100.00%	1,542	0.91	6.82	5.83	311.79	Industrial	1.72%	
-	CPACASC1 PE**	S/.	7.25	0.00%	4.92%	3.57%	-11.04%	95.00%	5,917	0.78	4.83	34.21	936.57	Industrial	2.38%	
-	CVERDEC1 PE**	US\$	22.80	0.00%	0.00%	-1.38%	-23.23%	85.00%	29,510	1.28	0.00	20.52	7,981.28	Mining	5.25%	
▼	ENGPEPC1 PE**	S/.	2.08	-0.95%	-2.35%	0.97%	5.05%	40.00%	291,666	0.71	7.43	9.93	1,819.09	Public Services	1.44%	
▼	ENDISPC1**	S/.	5.61	-0.88%	-0.88%	-3.61%	-0.53%	40.00%	52,773	0.75	3.82	10.53	1,082.90	Public Services	0.98%	
▲	FERREYC1 PE**	S/.	2.37	0.85%	-1.66%	3.04%	-7.06%	100.00%	76,780	0.90	5.72	9.42	699.00	Diverse	4.90%	
-	GRAMONC1 PE**	S/.	1.83	0.00%	8.28%	-12.86%	-2.14%	95.00%	35,426	0.62	0.00	-	365.13	Diverse	4.05%	
-	IFS PE**	US\$	40.00	0.00%	1.78%	0.50%	3.90%	95.00%	140,000	0.64	3.50	15.14	4,524.43	Diverse	7.22%	
-	INRETC1 PE**	US\$	26.10	0.00%	-0.19%	0.00%	24.29%	90.00%	274,990	1.00	0.00	54.79	2,683.27	Diverse	5.28%	
▼	LUSURC1 PE**	S/.	11.84	-0.08%	1.63%	-1.33%	-1.74%	100.00%	5,722	0.51	5.83	12.57	1,742.84	Public Services	1.81%	
#####	MILPOC1 PE**	S/.	#N/A	N/A	#VALOR!	#VALOR!	#VALOR!	0.00%	#VALOR!	#N/A	N/A	0.00	field Not Ap	#VALOR!	Mining	1.56%
-	MINSURI1 PE**	S/.	1.45	0.00%	-3.33%	-5.23%	-19.44%	80.00%	35,942	1.38	4.75	17.64	1,263.67	Mining	3.09%	
▲	PML PE**	US\$	0.22	1.82%	24.44%	24.44%	-30.00%	85.00%	69,844	1.81	0.00	-	59.10	Mining	2.12%	
▲	RELAPAC1 PE**	S/.	0.16	3.23%	0.63%	-14.44%	-48.39%	100.00%	54,678	1.40	0.00	3.13	170.97	Industrial	2.12%	
▼	SCOO PE**	US\$	42.85	-3.71%	-3.10%	-1.27%	-9.90%	75.00%	2,143	2.92	2.92	18.59	33,124.95	Mining	2.14%	
-	SIDERC1 PE**	S/.	0.55	0.00%	3.77%	-8.33%	14.58%	95.00%	1,481	1.44	0.00	5.01	204.15	Industrial	1.43%	
▼	TV PE**	US\$	0.58	-1.69%	-3.33%	-1.69%	-51.67%	90.00%	11,076	1.60	0.00	-	482.08	Mining	2.93%	
▼	UNACEMC1 PE**	S/.	2.18	-5.22%	-8.40%	-12.80%	-27.33%	65.00%	270,839	0.59	2.39	19.64	1,085.03	Industrial	3.00%	
▼	VOLCABC1 PE**	S/.	0.75	-2.60%	-2.60%	-8.54%	-43.18%	100.00%	180,557	1.68	3.64	-	2,321.57	Mining	5.90%	

Quantity of shares: 25  
 Source: Bloomberg, Económica  
 \* Bloomberg Industry Classification System  
 \*\* PER is used in the stock market and original currency of the instrument  
 \*Legend: Variation 1D: 1 Day; 5D: 5 Days, 1M: 1 Month; YTD: Var.% 12/31/17 to date

### Sectorial Indices

	Close	1D*	5D*	30D*	YTD*	Beta
▲ Mining Index	304.52	-1.30%	-1.46%	0.68%	-14.34%	1.69
▲ Consumer Index	1,007.61	0.09%	1.43%	-1.21%	11.75%	0.42
▼ Industrial Index	215.69	-0.67%	-0.12%	-2.82%	-8.59%	0.66
▲ Banking and Financial Index	1,198.35	1.46%	0.86%	3.86%	12.08%	1.03
▼ Construction Index	234.32	-1.60%	0.48%	-5.76%	-11.62%	0.52
▼ Services Index	427.91	-0.65%	-1.00%	-0.80%	2.72%	0.14
▲ Juniors Index	33.63	1.54%	12.59%	7.17%	-23.27%	0.87
▼ Electric Index	417.75	-0.65%	-1.00%	-0.80%	2.72%	0.14

\*Legend: Variation 1D: 1 Day; 5D: 5 Days, 1M: 1 Month; YTD: Var.% 12/31/17 to date



Source: Bloomberg

Capital Market Laboratory Coordinator: Economist Bruno Bellido Anicama  
 Support: Lith Fernandez, Samuel Machacuy, Maria Pia Quijano, Jorge Retamozo  
 e-mail: pulsobursatil@ulima.edu.pe  
 facebook: www.facebook.com/pulsobursatil.ul  
 Phone number : 4376767 Annexes: 35340 - 35310

# PULSO BURSÁTIL

## SOVEREIGN RATING

**RISK RATINGS**

Moody's	S&P	Fitch	
Aaa	AAA	AAA	Prime
Aa1	AA+	AA+	High credit quality
Aa2	AA	AA	
Aa3	AA-	AA-	
A1	A+	A+	Medium-high grade, with low credit risk
A2	A	A	
A3	A-	A-	
Baa1	BBB+	BBB+	Moderate Credit Risk
Baa2	BBB	BBB	
Baa3	BBB-	BBB-	
Ba1	BB+	BB+	It has speculative elements and it is subject to substantial credit risk
Ba2	BB	BB	
Ba3	BB-	BB-	
B1	B+	B+	It is considered speculative and it has high credit risk
B2	B	B	
B3	B-	B-	
Caa1	CCC+	CCC	Bad credit conditions and it is subject to high credit risk
Caa2	CCC		
Caa3	CCC-		
Ca	CC	DDD	Very close to default or in default
	C		
C	D		

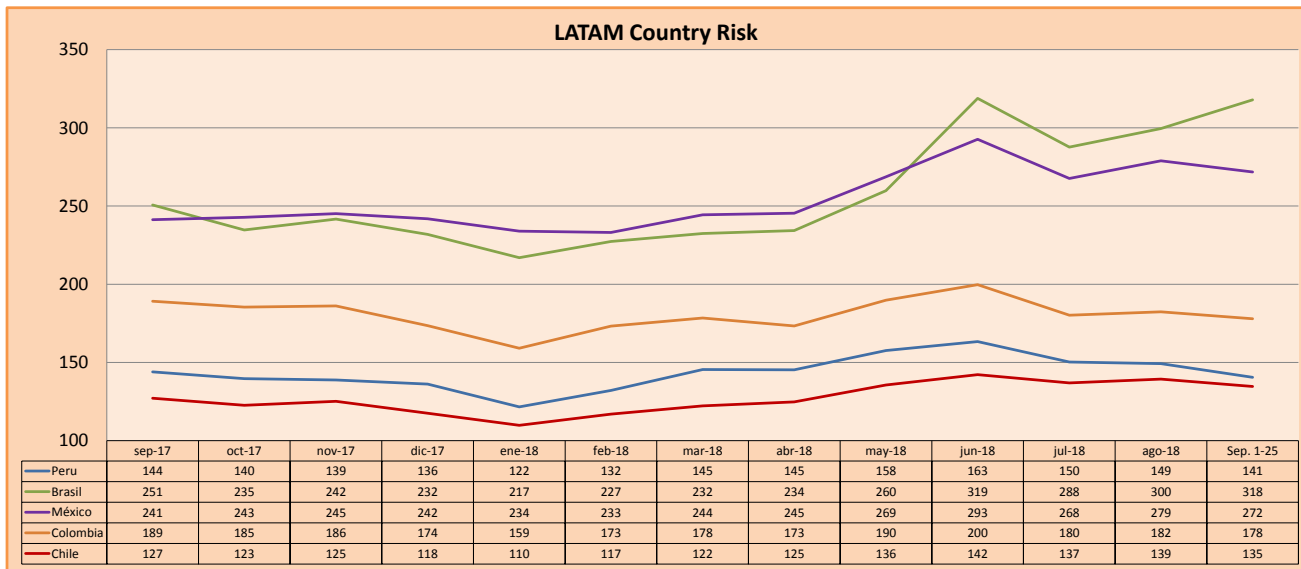
Source: Bloomberg

**Latin America Credit Rating**

Clasificadora de riesgo

Country	Moody's	Fitch	S&P
Peru	A3	BBB+	BBB+
Mexico	A3	BBB+	BBB+
Venezuela	C	C	SD
Brazil	Ba2	BB-	BB-
Colombia	Baa2	BBB	BBB-
Chile	A1	A	A+
Argentine	B2	B	B+ *-
Panama	Baa2	BBB	BBB

Source: Bloomberg



Source: Bloomberg

Capital Market Laboratory Coordinator: Economist Bruno Bellido Anicama  
 Support: Lith Fernandez, Samuel Machacuay, Maria Pia Quijano, Jorge Retamozo  
 e-mail: pulsobursatil@ulima.edu.pe  
 facebook: www.facebook.com/pulsobursatil.ul  
 Phone number : 4376767 Annexes: 35340 - 35310