



PULSO BURSÁTIL

Lima, January 10, 2019

MILA

Main Indices	Close	1 D	5 D	1 M	YTD	Market Cap. (US\$ bill)
▲ IPSA (Chile)	5,297.95	0.64%	3.29%	5.22%	3.77%	166.52
▲ IGPA (Chile)	26,795.77	0.62%	2.93%	2.93%	3.26%	227.58
▲ IGBC (Colombia)	11,628.48	0.34%	4.00%	-0.70%	4.35%	96.42
▲ COLCAP (Colombia)	1,384.07	0.47%	3.85%	0.51%	4.38%	96.67
▲ S&P/BVL (Perú)*	19,699.12	0.68%	2.37%	2.59%	1.80%	100.54
▲ S&P/BVL SEL (Perú)	362.41	0.83%	2.15%	2.36%	1.04%	76.18
▲ S&P/BVL LIMA 25	26,617.56	0.19%	2.20%	1.21%	0.41%	82.49
▲ IPC (México)	43,668.95	0.14%	3.96%	5.69%	4.97%	278.21
▲ S&P MILA 40	643.76	1.34%	4.87%	4.09%	5.77%	274.71

* Market Cap. Of the last price Legend: Variation 1D: 1 day; 5D: 5 days; 1M: 1 Month; YTD: Var%12/31/17 to date

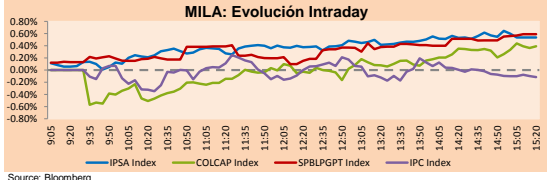
Equity

Largest gains	Exchange	Amt.	Price	▲ %
CGE	Santia.	CLP	560.00	9.80
GRAMONC1	Lima	PEN	1.95	8.33
IANSA	Santia.	CLP	14.00	7.69
PFCORFICOL	Colomb.	COP	16500.00	4.43

Largest losses	Exchange	Amt.	Price	▼ %
ESVAL-C	Santia.	CLP	0.02	-4.76
MINSUR1	Lima	PEN	1.41	-4.73
HIPERMARC	Santia.	CLP	3.15	-4.55
VOLCABC1	Lima	PEN	0.67	-4.29

Per Turnover	Exchange	Amount (US\$)
QUINENCO	Santia.	17,717,704
COPEC	Santia.	15,020,436
COM-B	Santia.	14,170,806
FALABELLA	Santia.	13,536,750
BSANTANDER	Santia.	10,572,194

Per Volume	Exchange	Volume
ESVAL-C	Santia.	339,680,370
BSANTANDER	Santia.	138,374,098
CHILE	Santia.	26,505,021
VAPORES	Santia.	10,217,722
ECOPETROL	Colomb.	8,057,694



Currency	Price	1D*	5D*	30D*	YTD*
▲ New Sol (PEN)	3,342.00	0.09%	-0.77%	-0.57%	-0.80%
▼ Chilean Peso (CLP)	675.78	-0.18%	-2.84%	-1.03%	-2.57%
▲ Colombian Peso (COP)	3,136.25	0.27%	-3.32%	-1.58%	-3.49%
▼ Mexican Peso (MXN)	19.13	-0.49%	-2.54%	-5.29%	-2.65%

*Legend: Variation 1D: 1 day; 5D: 5 days; 1M: 1 Month; YTD: Var%12/31/17 to date

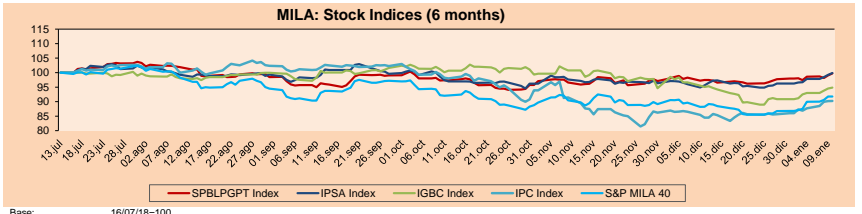
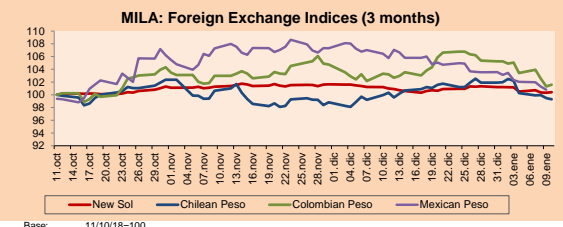
MILA

Peru: The General Index of the BVL of Peru ended today's session with a positive result of +0.68%. The index maintains a positive cumulative annual trend of +1.80% in local currency, while the adjusted yield in dollars amounts to +2.62%. Then, the S&P/BVL Peru SEL obtained a positive return of +0.42%, while the S&P/BVL LIMA 25 increased by +0.19%. The spot PEN reached S/3,342.00. **Highlight:** Peruvian stock market closes on the rise driven by Credicorp and Buenaventura.

Chile: The IPSA index ended the day with a positive return of +0.64%. The sectors of the index with the most positive results Real Estate (+3.06%) and Energy (+2.94%). On the other hand, the securities with the highest results were Parque Arauco SA (+3.06%) and Empresas COPEC SA (+2.94%). **Highlight:** Chilean stock exchange scored its tenth consecutive increase on Thursday.

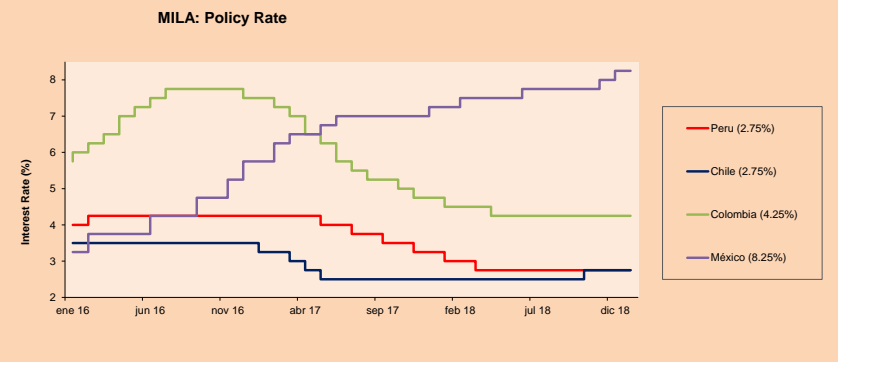
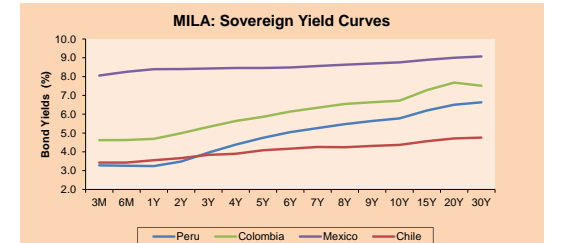
Colombia: The COLCAP index closed the session with a positive result of +0.47%. The sectors with the highest upward performance were Finance (+0.77%) and Public Services (+0.62%). In addition, the stocks with the highest yields were Grupo Aval Acciones y Valores (+3.88%) and Grupo Davivienda SA (+1.75%). **Highlight:** Tax collection in Colombia rises 6% in 2018, exceeds target.

Mexico: Mexico's IPC index closed today's session with a positive return of +0.05%. The sectors of the index that generated the most positive results were Finance (+1.94%) and Industrial (+1.43%). Finally, the stocks with the highest yields were Grupo Financiero Banorte SAB de CV (+3.92%) and Alfa SAB de CV. **Highlight:** Automotive industry fears plant suspension due to lack of fuel.



Instrument	Currency	Price	Bid Yield (%)	Ask Yield (%)	Duration
PERU 4.125 08/25/2027	USD	104.568	3.53	3.48	7.16
PERU 7.125 03/30/19	USD	101.394	0.84	0.17	0.21
PERU 7.35 07/21/25	USD	122.641	3.47	3.41	5.20
PERU 8.75 11/21/33	USD	148.584	4.23	4.21	9.53
PERU 6.55 03/14/37	USD	128.199	4.32	4.28	11.02
PERU 5.625 11/19/2050	USD	119.596	4.48	4.46	16.19
CHILE 2.25 10/30/22	USD	96.914	3.17	3.07	3.59
CHILE 3.875 08/05/20	USD	101.316	3.12	2.89	1.49
CHILE 3.625 10/30/2042	USD	93.607	4.06	4.03	15.58
COLOM 11.75 02/25/20	USD	109.506	3.13	2.88	1.03
COLOM 11.85 03/09/28	USD	155.32	4.47	4.39	6.23
COLOM 10.375 01/28/33	USD	151.782	5.16	5.14	8.43
COLOM 7.375 09/18/37	USD	124.871	5.28	5.25	10.88
COLOM 6.125 01/18/41	USD	112.211	5.20	5.17	12.35
MEX 4 10/02/23	USD	100.399	3.93	3.88	4.22
MEX5.55 01/45	USD	104.13	5.264	5.25	13.74

ETFs	Curr.	Close	1D	5D	30 D	YTD	Exchange
▲ iShares MSCI All Peru Capped Index Fund	USD	36.51	0.44%	2.58%	3.02%	2.85%	NYSE Arca
▲ iShares MSCI Chile Capped	USD	44.53	1.30%	7.40%	5.87%	7.53%	Cboe BZX
▼ Global X MSCI Colombia	USD	12.21	-0.13%	6.91%	1.69%	9.41%	NYSE Arca
▲ iShares MSCI Mexico Capped	USD	44.45	0.23%	6.37%	10.90%	7.94%	NYSE Arca
▲ iShares MSCI Emerging Markets	USD	40.93	0.71%	6.45%	2.94%	4.79%	NYSE Arca
▲ Vanguard FTSE Emerging Markets	USD	40.03	0.78%	6.26%	3.81%	5.07%	NYSE Arca
▲ iShares Core MSCI Emerging Markets	USD	49.27	0.67%	6.18%	2.62%	4.50%	NYSE Arca
▲ iShares JP Morgan Emerging Markets Bonds	USD	57.34	0.67%	4.05%	1.38%	2.63%	Cboe BZX
▲ Morgan Stanley Emerging Markets Domestic	USD	6.47	0.62%	5.55%	2.21%	6.77%	New York



Capital Market Laboratory Coordinator: Economist Bruno Bellido Anicam
Support: Samuel Machucauy, Jorge Retamozo.
e-mail: pulsobursatil@ulima.edu.pe
facebook: www.facebook.com/pulsobursatil.ul
Phone number : 4376767 Annex: 35340

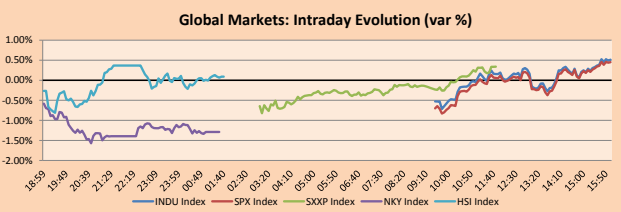


PULSO BURSÁTIL

WORLD

Main Indices	Close	1 D*	5 D*	1 M*	YTD*	Market Cap. (US\$ Mill.)
▲ Dow Jones (USA)	24,001.92	0.51%	5.80%	-1.73%	2.89%	6,579,620
▲ Standard & Poor's 500 (USA)	2,596.64	0.45%	6.08%	-1.56%	3.58%	22,548,412
▲ NASDAQ Composite (USA)	6,986.07	0.42%	8.08%	-0.49%	5.29%	10,878,588
▲ Stoxx EUROPE 600 (Europe)	348.88	0.34%	4.48%	2.92%	3.33%	8,156,506
▲ DAX (Germany)	10,921.59	0.26%	4.85%	2.62%	3.43%	910,393
▲ FTSE 100 (United Kingdom)	6,942.87	0.52%	3.74%	3.29%	3.19%	1,485,827
▼ CAC 40 (France)	4,805.66	-0.16%	4.21%	1.33%	1.58%	1,254,847
▲ IBEX 35 (Spain)	8,856.80	0.38%	3.91%	2.27%	3.71%	477,636
▲ MSCI AC Asia Pacific Index	151.13	1.75%	3.87%	1.85%	3.02%	16,665,543
▲ HANG SENG (Hong Kong)	26,521.43	0.22%	5.81%	2.91%	2,668,320	
▼ SHANGHAI SE Comp. (China)	2,538.10	-0.36%	2.87%	-2.27%	1.65%	4,038,984
▼ NIKKEI 225 (Japan)	20,163.80	-1.29%	0.74%	-4.65%	0.74%	3,218,775
▲ BOVESPA (Brazil)	93,805.93	0.21%	2.45%	9.18%	6.73%	749,185
▲ Merval (Argentina)	34,167.45	1.18%	9.99%	11.10%	12.79%	100,748

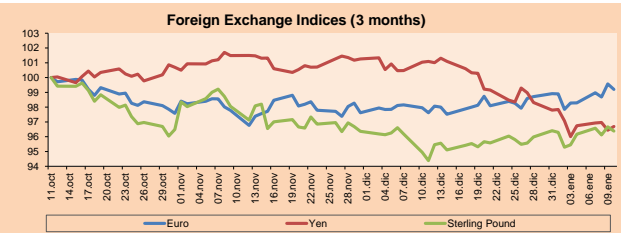
*Legend: Variation 1D: 1 Day; 5D: 5 Days; 1M: 1 Month; YTD: Var.% 12/31/17 to date



Source: Bloomberg

Currency	Price	1 D*	5 D*	1 M*	YTD*
▼ Euro	1.1500	-0.37%	0.93%	1.62%	0.29%
▼ Yen	108.4500	0.26%	0.72%	-4.35%	-1.13%
▼ Sterling Pound	1.2748	-0.32%	0.95%	2.09%	-0.05%
▼ Yuan	6.7885	-0.40%	-1.22%	-1.62%	-1.31%
▲ Hong Kong Dollar	7.8396	0.01%	0.09%	0.27%	0.09%
▲ Brazilian Real	3.7118	0.84%	-1.27%	-4.83%	-4.20%
▼ Argentine Peso	37.0920	-0.72%	-0.86%	-1.91%	-1.53%

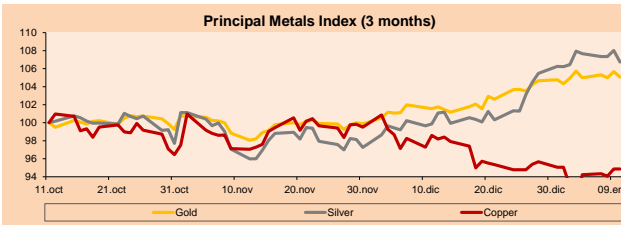
*Legend: Variation 1D: 1 Day; 5D: 5 Days; 1M: 1 Month; YTD: Var.% 12/31/17 to date



Base: 11/10/18=100
Source: Bloomberg

Commodities	Close	1 D*	5 D*	1 M*	YTD*
▼ Oro (US\$ Oz. T) (LME)	1,286.30	-0.56%	-0.62%	3.47%	0.30%
▼ Plata (US\$ Oz. T) (LME)	15.58	-1.20%	-1.12%	6.87%	0.45%
▼ Cobre (US\$ T) (LME)	5,936.75	0.00%	3.90%	-3.79%	-0.21%
- Zinc (US\$ T) (LME)	2,513.50	0.00%	2.42%	-5.76%	-0.20%
- Petróleo WTI (US\$ Barril) (NYM)	52.36	0.00%	11.19%	1.00%	15.30%
- Estano (US\$ T) (LME)	20,095.00	0.00%	2.52%	-4.95%	2.95%
- Plomo (US\$ T) (LME)	1,959.75	0.00%	2.02%	-0.28%	-2.35%
- Molibdeno (US\$ T) (LME)	24,885.00	0.00%	-0.01%	0.00%	-0.02%
▼ Azúcar #11 (US\$ Libra) (NYB-ICE)	12.67	-1.55%	8.38%	-1.25%	5.32%
▲ Cacao (US\$ T) (NYB-ICE)	2,369.00	0.77%	-1.29%	11.96%	-1.95%
▼ Café Arábica (US\$ T) (NYB-ICE)	104.25	-1.00%	2.06%	1.86%	2.36%

*Lenda: Variación 1D: 1 Día; 5D: 5 Días; 1M: 1 Mes; YTD: Var.% 31/12/17 a la fecha



Base: 11/10/18=100
Source: Bloomberg

Equity

Alemania (Acciones del DAX Index)				Largest gains				Largest losses						
Symbol	Curr.	Price	▲ %	Exchange	Symbol	Curr.	Price	▼ %	Exchange	Symbol	Curr.	Price	▼ %	Exchange
LIN GY	EUR	139	1.65	Xetra	1COV GY	EUR	45.55	-2.63	Xetra	CON GY	EUR	129.15	-2.38	Xetra
RWE GY	EUR	20.26	1.43	Xetra	IFX GY	EUR	17.93	-1.40	Xetra	FME GY	EUR	59.58	-1.23	Xetra
MUV2 GY	EUR	190.15	1.33	Xetra										
EOAN GY	EUR	9.02	0.96	Xetra										

Europe (Stocks from STOXX EUROPE 600)				Largest gains				Largest losses						
Symbol	STOX	Price	▲ %	Exchange	Symbol	Curr.	Price	▼ %	Exchange	Symbol	Curr.	Price	▼ %	Exchange
EMG LN	Gbp	141.85	3.88	Londres	OSR GY	EUR	35.5	-6.01	Xetra	EO FP	EUR	35.09	-5.70	EN Paris
LXS GY	EUR	46.38	3.87	Xetra	OTDI GY	EUR	37.2	-5.49	Xetra	UTDI GY	EUR	37.2	-5.49	Xetra
CDR PLN	PLN	171	3.64	Warsaw	BHP LN	Gbp	1616.6	-5.32	Londres					
SCR FP	EUR	40.98	3.54	EN Paris										

Global Overview:

United States:

The US market closed up for the fifth consecutive session, with the Dow Jones being the most advanced (+0.51%), followed by the S & P 500 (+0.45%) and Nasdaq (+0.42%). The markets remained optimistic after Donald Trump mentioned that the United States was succeeding in its trade negotiations with China, adding that China is in many ways much more honorable than the Democratic Party, after the rejection of the Democrats at the request of \$5.7 billion, for the construction of the wall on the US-Mexico border. On the other hand, the president of the FED, Jerome Powell, said that the central bank has the ability to be patient with the policy since inflation is stable, and this allows assessing whether the economy will slow down this year. In business news, Amazon shares (-0.19%) were affected after the divorce of the company's founder, Jeff Bezos, would disrupt his control of the company, as he questions how the couple will divide their fortune, which includes a 16% share, equivalent to \$81.4 billion of market capitalization. In other news, the increasing oil exports of the United States have caused to build ports to handle more than 3 million barrels per day (bpd) in new supplies since it is projected that the US production will reach 12 million bpd this year, with respect to the 9.35 million in 2017.

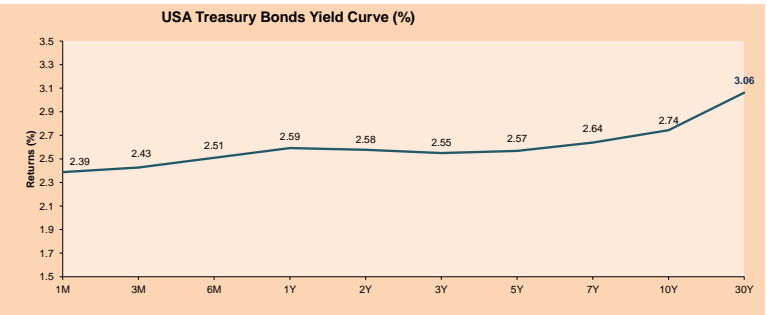
Europe:

The European market closed with positive returns, with the exception of the CAC 40 (-0.16%) after the French companies revealed this week some 60 million businesses lost due to anti-government protests that shook the country, in addition, consumer confidence fell to its lowest level in four years in December. The FTSE 100 rose +0.52%, noting that the British Secretary of State, Greg Clark, warned that breaking the European trade bloc would be a disaster for the United Kingdom; On the other hand, the lower confidence of consumers, the impact of discount stores and the change to the purchase of items online, leaving stores empty faces are the causes of another quarter of falling underlying sales in commerce retailer. Lastly, the DAX and the FTSE MIB advanced +0.26% and +0.63%, respectively. In business news, Ford and Jaguar Land Rover signaled large job cuts in Europe as part of a review that would result in the plant closing and discontinuation of some models, while automakers are struggling with a decline in demand for diesel vehicles, stricter emission standards and a global economic slowdown led by China. This is in the midst of Ford having been losing money for years and the pressure to restructure its operations increased since his rival, General Motors, extended its profits by selling its European brands Opel and Vauxhall to French Peugeot.

Asia:

The Asian market ended with negative results among its main indices. The Nikkei 225 (-1.29%) closed lower ending the three-day winning streak as a result of the investors taking profits. The index in this period accumulated a yield of +4.37% but even with the decline of today is above the psychological barrier of 20,000 points. The yen appreciated against the dollar during the trading hours of the Asian market even trading at 107.78 yen per dollar. The US currency is under pressure as the probability that the FED raises the interest rate as it fears a late resolution of the Sino-American conflict. The exporters such as Sony Corp (-3.09%), TDK (-2.52%) and Daikin (-1.94%) were affected by the appreciation of the yen. In other news, the Yaskawa company, very exposed to the Chinese market, reported a cut in its projections from 59B yen to 53B, lower than what analysts estimate (56.82 B), the company cites weakness of the Chinese market. In Mainland China, the Shanghai Composite (-0.36%) closed down after it was announced that in December in producer prices rose at a low level not seen since September 2016, the slowdown was expected but the magnitude surprised investors.

ETFs	Curr.	Close	1D	5D	30 D	YTD	Exchange
SPDR S&P 500 ETF TRUST	USD	258.88	0.35%	6.01%	-1.99%	3.59%	NYSE Arca
ISHARES MSCI EMERGING MARKET	USD	40.93	0.71%	6.45%	2.94%	4.79%	NYSE Arca
ISHARES IBOXX HIGH YLD CORP	USD	84.16	0.39%	3.86%	1.35%	3.77%	NYSE Arca
FINANCIAL SELECT SECTOR SPDR	USD	24.44	0.04%	-4.09%	-0.33%	2.60%	NYSE Arca
VANECK VECTORS GOLD MINERS E	USD	21.00	-1.50%	-2.23%	4.95%	-0.43%	NYSE Arca
ISHARES RUSSELL 2000 ETF	USD	143.64	0.52%	8.61%	0.13%	7.27%	NYSE Arca
SPDR GOLD SHARES	USD	121.59	-0.59%	-0.69%	3.45%	0.28%	NYSE Arca
ISHARES 20+ YEAR TREASURY BO	USD	120.46	-0.64%	-2.49%	1.33%	-0.86%	NASDAQ GM
INVESCO QQQ TRUST SERIES 1	USD	161.28	0.29%	7.65%	-1.42%	4.55%	NASDAQ GM
ISHARES NASDAQ BIOTECHNOLOGY	USD	108.90	1.30%	11.53%	4.54%	12.93%	NASDAQ GM
ENERGY SELECT SECTOR SPDR	USD	62.38	0.29%	7.74%	-1.13%	8.77%	NYSE Arca
PROSHARES ULTRA VIX ST FUTUR	USD	65.42	-1.65%	-21.46%	1.44%	-19.96%	NYSE Arca
UNITED STATES OIL FUND LP	USD	11.10	1.56%	11.45%	1.37%	14.91%	NYSE Arca
ISHARES MSCI BRAZIL ETF	USD	42.90	-0.14%	4.89%	12.75%	12.30%	NYSE Arca
SPDR S&P OIL & GAS EXP & PR	USD	30.74	0.62%	13.43%	0.92%	15.87%	NYSE Arca
UTILITIES SELECT SECTOR SPDR	USD	53.43	1.31%	2.75%	-5.93%	0.96%	NYSE Arca
ISHARES US REAL ESTATE ETF	USD	77.66	1.38%	5.24%	-4.54%	3.63%	NYSE Arca
SPDR S&P BIOTECH ETF	USD	82.16	1.68%	15.38%	4.17%	14.51%	NYSE Arca
ISHARES IBOXX INVESTMENT GRA	USD	113.54	-0.28%	0.28%	0.99%	0.64%	NYSE Arca
ISHARES JPM MORGAN USD EMERGI	USD	105.51	-0.18%	1.11%	1.32%	1.54%	NASDAQ GM
REAL ESTATE SELECT SECT SPDR	USD	31.91	1.59%	4.86%	-5.84%	2.94%	NYSE Arca
ISHARES CHINA LARGE-CAP ETF	USD	40.57	0.60%	6.51%	-0.25%	3.81%	NYSE Arca
CONSUMER STAPLES SPDR	USD	51.48	0.60%	2.57%	-6.69%	1.38%	NYSE Arca
VANECK VECTORS JUNIOR GOLD M	USD	30.70	-2.35%	-2.38%	9.84%	1.59%	NYSE Arca
SPDR BBG BARC HIGH YIELD BND	USD	34.95	0.49%	4.14%	1.27%	4.05%	NYSE Arca
VANGUARD REAL ESTATE ETF	USD	77.53	1.36%	5.54%	-5.02%	3.97%	NYSE Arca



Source: Bloomberg

Capital Market Laboratory Coordinator: Economist Bruno Bellido Anicama
Support: Samuel Machacuy, Jorge Retamozo
e-mail: pulsobursatil@ulima.edu.pe
facebook: www.facebook.com/pulsobursatil.ul
Phone number: 4376767 Annex: 35340



PULSO BURSÁTIL

LIMA

Stocks

Ticker	Currency	Price	1D*	5D*	30D*	YTD*	Frequency	Volume (US\$)	Beta	Dividend Yield (%)	Price Earning	Market Cap. (M US\$)	Economic Sector*	Index Weight
▲ ALICORC1 PE**	S/.	10.15	0.50%	2.53%	0.20%	2.01%	94.44%	179,357	0.66	2.36	17.65	2,595.45	Industrial	3.53%
▼ ATACOCB1 PE**	S/.	0.32	-3.03%	0.00%	-4.48%	-0.62%	83.33%	5,289	1.26	0.00	8.71	90.47	Mining	1.02%
- BACKUSH1 PE**	S/.	20.60	0.00%	1.73%	-6.36%	0.24%	88.89%	18,646	0.45	5.69	8.39	8,322.82	Industrial	0.82%
▲ BAP PE**	US\$	230.50	1.45%	3.63%	4.13%	4.16%	100.00%	2,397,986	1.09	1.87	-	18,385.02	Diverse	5.82%
▲ BVN PE**	US\$	16.60	2.28%	-0.72%	10.67%	3.11%	100.00%	7,434	1.43	0.52	-	4,224.13	Mining	5.88%
- CASAGRC1 PE**	S/.	4.11	0.00%	1.23%	2.75%	1.23%	100.00%	1,599	0.97	0.46	178.58	103.59	Agricultural	1.31%
▲ CONTINC1 PE**	S/.	3.85	1.32%	0.00%	-1.28%	-2.53%	88.89%	123,792	0.63	3.69	14.91	6,184.65	Finance	2.85%
- CORAREI1 PE**	S/.	0.68	0.00%	-2.86%	0.00%	-2.86%	100.00%	1,925	1.07	7.72	4.14	305.80	Industrial	1.72%
▲ CPACASC1 PE**	S/.	6.55	0.77%	1.87%	3.15%	1.55%	100.00%	18,059	0.80	5.76	30.91	837.08	Industrial	2.38%
▼ CVERDEC1 PE**	US\$	20.45	-0.73%	-0.73%	-3.67%	-1.68%	100.00%	254,833	1.04	2.79	18.40	7,158.65	Mining	5.25%
▲ ENGEPEC1 PE**	S/.	1.91	0.53%	0.00%	-4.50%	-1.55%	61.11%	30,566	0.77	9.13	8.60	1,622.39	Public Services	1.44%
- ENDISPC1**	S/.	5.27	0.00%	-1.13%	-2.04%	-1.13%	27.78%	1,182,182	0.80	0.00	9.89	1,006.95	Public Services	0.98%
▲ FERREYC1 PE**	S/.	2.55	0.79%	6.25%	10.87%	0.39%	100.00%	263,242	0.95	5.31	11.02	744.46	Diverse	4.90%
▲ GRAMONC1 PE**	S/.	1.95	8.33%	2.09%	-6.25%	-2.01%	77.78%	5,835	0.67	0.00	-	385.13	Diverse	4.05%
▲ IFS PE**	US\$	42.01	0.02%	1.23%	1.50%	0.02%	83.33%	342,129	0.61	3.33	14.27	4,751.79	Diverse	7.22%
▲ INRETC1 PE**	US\$	32.00	0.63%	9.59%	10.34%	13.07%	100.00%	4,195,589	1.00	0.00	57.90	3,289.83	Diverse	5.28%
▲ LUSURC1 PE**	S/.	10.90	0.83%	-0.46%	3.81%	-0.46%	77.78%	3,620	0.50	6.79	10.66	1,588.20	Public Services	1.81%
▼ MINSUR1 PE**	S/.	1.41	-4.73%	2.17%	3.68%	2.17%	77.78%	38,914	1.32	0.00	0.79	1,216.35	Mining	3.09%
▲ PML PE**	US\$	0.17	-1.16%	-7.07%	-0.58%	-2.29%	61.11%	17,068	1.61	0.00	-	45.12	Mining	2.12%
- RELAPAC1 PE**	S/.	0.13	0.00%	4.00%	0.78%	3.17%	100.00%	6,209	0.97	0.00	427.50	137.50	Industrial	2.12%
▼ SCCO PE**	US\$	31.63	-1.71%	8.32%	-1.16%	3.37%	83.33%	30,141	1.42	4.43	13.97	24,451.40	Mining	2.14%
- SIDERC1 PE**	S/.	0.55	0.00%	-1.79%	-3.51%	0.00%	83.33%	5,760	1.42	0.00	5.98	202.08	Industrial	1.43%
▲ TV PE**	US\$	0.33	0.31%	16.07%	1.25%	9.43%	94.44%	136,675	1.76	0.00	-	269.65	Mining	2.93%
- UNACEMC1 PE**	S/.	2.60	0.00%	1.96%	-1.52%	0.00%	72.22%	216,995	0.82	0.00	20.18	1,280.94	Industrial	3.00%
▼ VOLCABC1 PE**	S/.	0.67	-4.29%	3.08%	-8.22%	-5.63%	100.00%	241,660	1.75	2.04	-	817.27	Mining	5.90%

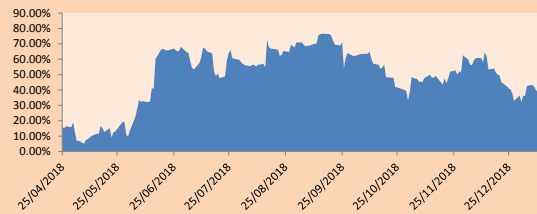
Quantity of shares: 25
 Source: Bloomberg, Económica
 * Bloomberg Industry Classification System
 ** PER is used in the stock market and original currency of the instrument
 *Legend: Variation 1D: 1 Day; 5D: 5 Days, 1M: 1 Month; YTD: Var.% 12/31/17 to date

Sectorial Indices

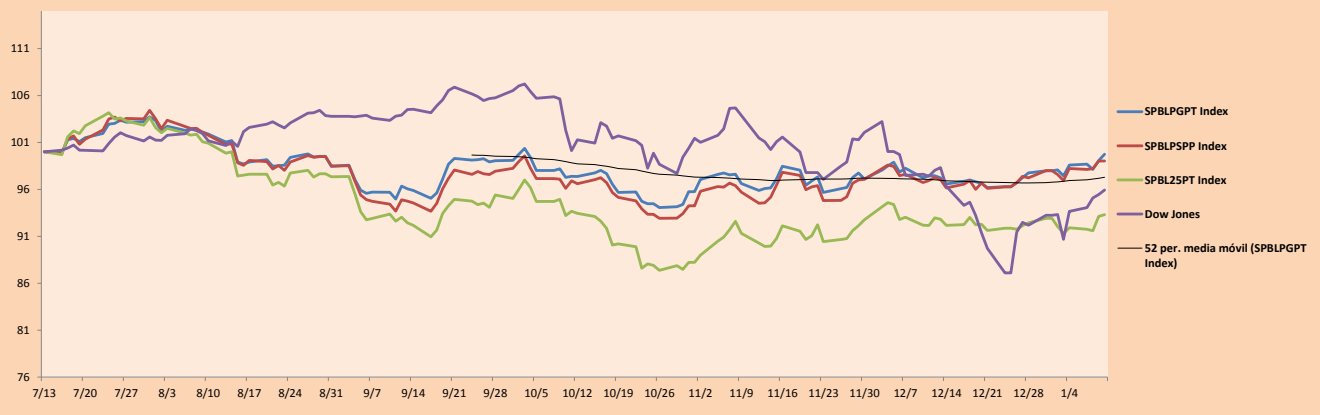
	Close	1D*	5D*	30D*	YTD*	Beta
▲ Mining Index	288.87	0.11%	2.00%	2.94%	1.42%	1.74
▲ Consumer Index	1,059.01	0.51%	4.59%	2.73%	5.31%	0.40
▲ Industrial Index	227.06	1.75%	3.16%	2.70%	0.07%	0.84
▲ Banking and Financial Index	1,231.84	1.39%	2.40%	2.91%	2.66%	1.03
▲ Construction Index	245.50	2.35%	1.61%	-1.15%	-0.15%	0.84
▲ Services Index	395.01	0.33%	-0.29%	-0.35%	-0.65%	0.12
▼ Juniors Index	28.20	-0.42%	-6.47%	-1.43%	-4.21%	1.04
▲ Electric Index	385.63	0.34%	-0.29%	-0.34%	-0.65%	0.12

*Legend: Variation 1D: 1 Day; 5D: 5 Days, 1M: 1 Month; YTD: Var.% 12/31/17 to date

Correlation Graph of Returns of Mining Index against Metallic Index of London (3 months)



Indices (6 months)



Source: Bloomberg

Capital Market Laboratory Coordinator: Economist Bruno Bellido Anicama
 Support: Samuel Machacuy, Jorge Retamozo.
 e-mail: pulsobursatil@ulima.edu.pe
 facebook: www.facebook.com/pulsobursatil.ul
 Phone number : 4376767 Annex: 35340

The content of this document is just for informational purposes. The information and opinions expressed should not be considered as recommendations for future decisions. Under any circumstances, the Capital Market Laboratory of University of Lima will be responsible for the use of the statements in this document.

PULSO BURSÁTIL

SOVEREIGN RATING

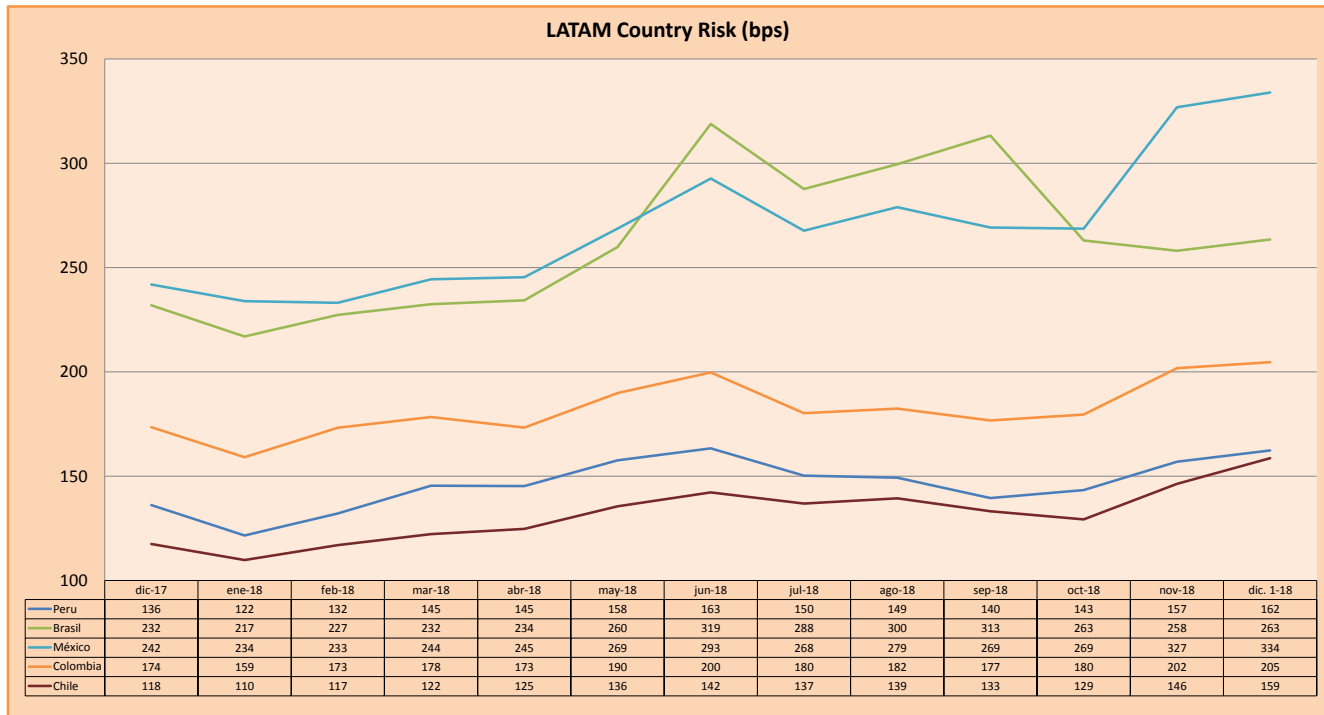
RISK RATINGS

Moody's	S&P	Fitch	
Aaa	AAA	AAA	Prime
Aa1	AA+	AA+	High credit quality
Aa2	AA	AA	
Aa3	AA-	AA-	
A1	A+	A+	Medium-high grade, with low credit risk
A2	A	A	
A3	A-	A-	
Baa1	BBB+	BBB+	Moderate Credit Risk
Baa2	BBB	BBB	
Baa3	BBB-	BBB-	
Ba1	BB+	BB+	It has speculative elements and it is subject to substantial credit risk
Ba2	BB	BB	
Ba3	BB-	BB-	
B1	B+	B+	It is considered speculative and it has high credit risk
B2	B	B	
B3	B-	B-	
Caa1	CCC+		Bad credit conditions and it is subject to high credit risk
Caa2	CCC		
Caa3	CCC-	CCC	
Ca	C		Very close to default or in default
		DDD	
C	D	DD D	

Source: Bloomberg

Latin America Credit Rating			
Clasificadora de riesgo			
Country	Moody's	Fitch	S&P
Peru	A3	BBB+	BBB+
Mexico	A3	BBB+	BBB+
Venezuela	C	C	SD
Brazil	Ba2	BB-	BB-
Colombia	Baa2	BBB	BBB-
Chile	A1	A	A+
Argentina	B2	B	B
Panama	Baa2	BBB	BBB

Source: Bloomberg



Source: BCRP

Capital Market Laboratory Coordinator: Economist Bruno Bellido Anicama
Support: Samuel Machacuay, Jorge Retamozo.
e-mail: pulsobursatil@ulima.edu.pe
facebook: www.facebook.com/pulsobursatil.ul
Phone number : 4376767 Annex: 35340

The content of this document is just for informational purposes. The information and opinions expressed should not be considered as recommendations for future decisions. Under any circumstances, the Capital Market Laboratory of University of Lima will be responsible for the use of the statements in this document.