



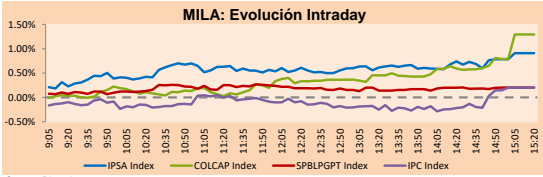
PULSO BURSÁTIL

Lima, July 3, 2019

MILA

Main Indices	Close	1 D	5 D	1 M	YTD	Market Cap. (US\$ bill)
▲ IPSA (Chile)	5,055.24	0.91%	-0.56%	0.83%	-0.98%	149.16
▲ IGPA (Chile)	25,702.24	0.73%	-0.52%	0.70%	-0.95%	193.71
▲ IGBC (Colombia)	12,732.35	1.38%	0.64%	5.62%	14.25%	102.52
▲ COLCAP (Colombia)	1,563.72	1.29%	0.38%	5.16%	17.93%	104.34
▲ S&P/BVL (Perú)*	20,771.11	0.23%	0.78%	3.95%	7.34%	110.14
▲ S&P/BVL SEL (Perú)	549.94	0.23%	0.35%	3.56%	7.34%	81.83
▲ S&P/BVL LIMA 25	26,297.90	0.13%	0.90%	4.41%	-0.79%	90.39
▲ IPC (México)	43,529.01	0.20%	-0.60%	0.98%	4.54%	282.47
▼ S&P MILA 40	644.69	-0.69%	-1.01%	5.90%	5.92%	267.48

* Market Cap. Of the last price Legend: Variation 1D: 1 day; 5D: 5 days; 1M: 1 Month; YTD: Var%12/31/18 to date

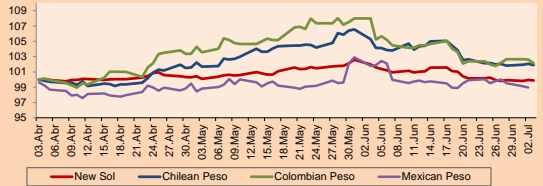


Source: Bloomberg

Currency	Price	1D*	5D*	30 D*	YTD*
▼ New Sol (PEN)	3,291.7	-0.07%	-0.07%	-2.06%	-2.29%
▼ Chilean Peso (CLP)	679.21	-0.17%	-0.10%	-3.23%	-2.07%
▼ Colombian Peso (COP)	3,195.35	-0.45%	0.36%	-5.44%	-1.67%
▼ Mexican Peso (MXN)	19.02	-0.17%	-0.57%	-3.85%	-3.22%

*Legend: Variation 1D: 1 day; 5D: 5 days; 1M: 1 Month; YTD: Var%12/31/18 to date

MILA: Foreign Exchange Indices (3 months)

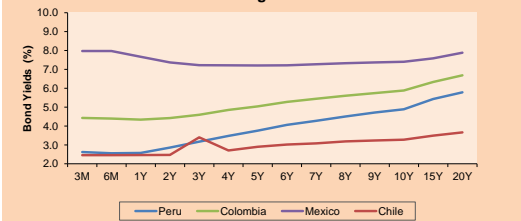


Base: 03/04/19=100 Source: Bloomberg

Fixed Income

Instrument	Currency	Price	Bid Yield (%)	Ask Yield (%)	Duration
PERU 4.125 08/25/2027	USD	112.014	2.50	2.47	6.92
PERU 7.35 07/21/25	USD	128.122	2.35	2.31	4.95
PERU 8.75 11/21/33	USD	163.222	3.23	3.21	9.62
PERU 6.55 03/14/37	USD	142.564	3.35	3.34	11.24
PERU 5.625 11/18/2050	USD	139.317	3.54	3.54	17.38
CHILE 2.25 10/30/22	USD	100.517	2.14	2.03	3.17
CHILE 3.875 08/05/20	USD	102.098	2.06	1.73	1.05
CHILE 3.625 10/30/2042	USD	105.768	3.28	3.26	16.07
COLOM 11.75 02/25/20	USD	106.028	2.22	1.92	0.61
COLOM 11.85 03/09/28	USD	159.671	3.77	3.69	6.07
COLOM 10.375 01/28/33	USD	157.738	4.67	4.54	8.43
COLOM 7.375 09/18/37	USD	137.898	4.36	4.33	11.16
COLOM 6.125 01/18/41	USD	125.524	4.31	4.28	12.82
MEX 4 10/02/23	USD	104.69	2.85	2.78	3.86
MEX5.55 01/45	USD	117.751	4.389	4.385	14.41

MILA: Sovereign Yield Curves



Source: Bloomberg

Equity

Largest gains	Exchange	Amt.	Price	▲%
GASCO	Santia.	CLP	2446.10	5.15
ENTEL	Santia.	CLP	6949.00	3.39
ECOPETROL	Colomb.	COP	3010.00	2.91
CAMANCHACA	Santia.	CLP	69.30	2.77

Per Turnover

Exchange	Amount (US\$)
CMPC	12,680,577
CAP	10,859,148
SQM-B	10,819,380
BSANTANDER	8,425,618
COPEC	8,395,477

Largest losses	Exchange	Amt.	Price	▼%
POMALCC1	Lima	PEN	0.06	-7.69
MOROCOI1	Lima	PEN	1.71	-7.07
HIPICO	Santia.	CLP	17000000.00	-4.49
CONCRET	Colomb.	COP	491.00	-2.77

Per Volume

Exchange	Volume
BSANTANDER	111,822,866
VAPORES	41,783,341
CHILE	32,083,141
AGUAS-A	9,937,827
NORTEGRAN	8,202,702

SOUTH AMERICA

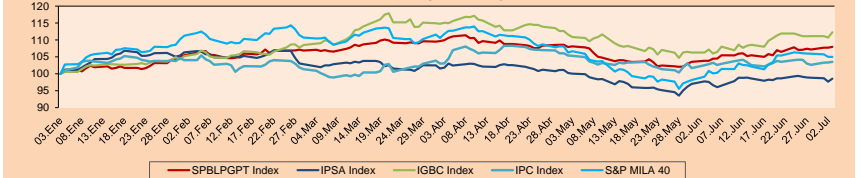
Peru: The General Index of the BVL ended today's session with a positive result of + 0.20%. The index maintains a cumulative positive annual trend of + 7.34% in local currency, while the adjusted yield in dollars amounts to + 9.86%. Then, the S&P/BVL Peru SEL advanced + 0.23%, just as the S&P/BVL LIMA 25 had gains of + 0.13%. Highlight: Peruvian currency rises slightly due to foreign currency offers.

Chile: The IPSA index ended the day with a positive return of + 0.91%. The sectors of the index with the most positive results were Communication services (+ 3.39%) and Products of first necessity (+ 1.82%). On the other hand, the values with the highest results were Empresas ENTEL Chile SA (+ 3.39%) and Cencosud SA (+ 2.70%). Highlight: Chilean retail sales in May rebounded three times more than economists' estimates.

Colombia: The COLCAP index ended the day with a positive return of + 1.29%. The sectors of the index with the most positive results were Energy (+ 2.86%) and Industrial (+ 2.00%). On the other hand, the securities with the highest results were Avianca Holdings SA (+ 3.39%) and Ecopetrol SA (+ 2.91%). Highlight: The Bank of the Republic of Colombia will reduce its monetary policy rate to 4% by the end of 2019.

Brazil: The IBOVESPA index closed today's session with a positive return of + 1.43%. The sectors of the index that generated the most positive results were Information Technology (+ 5.34%) and Products of first necessity (+ 2.26%). Finally, the stocks with the best yields were Gol Linhas Aéreas Inteligentes (+ 9.59%) and Globex Utilidades SA (+ 8.81%). Highlight: Petrobras seeks to raise \$ 1,900 million in the chain of gas stations.

MILA: Stock Indices (6 months)

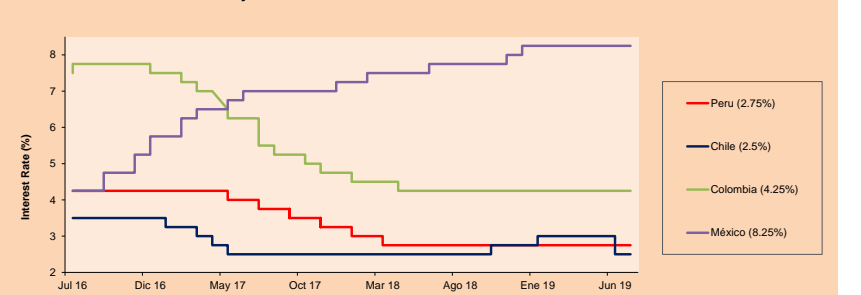


Base: 04/01/19=100 Source: Bloomberg

ETFs

	Curr.	Close	1D	5D	30 D	YTD	Exchange
▲ iShares MSCI All Peru Caped Index Fund	USD	37.2257	0.04%	0.58%	7.21%	6.81%	NYSE Arca
▲ iShares MSCI Chile Capped	USD	40.44	0.02%	-0.91%	3.92%	-0.47%	Cboe BZX
▼ Global X MSCI Colombia	USD	13.1	-0.30%	-0.91%	9.12%	19.61%	NYSE Arca
▲ iShares MSCI Mexico Capped	USD	43.98	0.21%	-0.54%	5.16%	8.97%	NYSE Arca
▼ iShares MSCI Emerging Markets	USD	43.23	-0.18%	1.31%	6.04%	11.52%	NYSE Arca
▲ Vanquard FTSE Emerging Markets	USD	43.13	0.12%	1.91%	6.23%	14.21%	NYSE Arca
▼ iShares Core MSCI Emerging Markets	USD	51.97	-0.25%	1.17%	5.86%	11.11%	NYSE Arca
▲ iShares JP Morgan Emerging Markets Bonds	USD	59.2	0.10%	0.01%	3.85%	7.12%	Cboe BZX
▼ Morgan Stanley Emerging Markets Domestic	USD	6.91	-0.29%	0.14%	7.79%	19.14%	New York

MILA: Policy Rate



Source: Bloomberg

Capital Market Laboratory Coordinador: Economist Bruno Bellido Anicam
Collaboration: Juan Carlos Figueroa, Pablo Llanos, Jorge Retamozo y Marcia Rojas.
e-mail: pulsoburstil@ulima.edu.pe
facebook: www.facebook.com/pulsoburstil.ul
Phone number : 4376767 Annex: 35340

PULSO BURSÁTIL

WORLD

Main Indices	Close	1 D*	5 D*	1 M*	YTD*	Market Cap. (US\$ Mill.)
▲ Dow Jones (USA)	26,966.00	0.67%	1.62%	8.65%	15.60%	7,468,701
▲ Standard & Poor's 500 (USA)	2,995.82	0.77%	2.82%	9.16%	19.51%	25,672,180
▲ NASDAQ Composite (USA)	8,170.23	0.75%	3.29%	11.42%	23.13%	12,528,895
▲ Stoxx EUROPE 600 (Europe)	392.58	0.85%	2.72%	5.96%	16.27%	9,362,101
▲ DAX (Germany)	12,616.24	0.71%	3.03%	6.98%	19.48%	1,039,598
▲ FTSE 100 (United Kingdom)	7,609.32	0.68%	2.60%	5.91%	13.10%	1,626,256
▲ CAC 40 (France)	5,618.81	0.75%	2.15%	7.20%	18.77%	1,534,751
▲ IBEX 35 (Spain)	9,394.40	1.22%	2.59%	4.12%	10.01%	519,097
▲ MSCI AC Asia Pacific Index	162.23	0.43%	2.17%	6.32%	10.58%	18,698,548
▲ HANG SENG (Hong Kong)	28,855.14	-0.07%	2.37%	7.62%	11.64%	2,718,202
▲ SHANGHAI SEC Comp. (China)	3,015.26	-0.94%	1.31%	5.34%	20.91%	4,819,022
▲ NIKKEI 225 (Japan)	21,638.16	-0.53%	2.62%	6.03%	8.11%	3,314,972
▲ BOVESPA (Brazil)	102,043.10	1.44%	1.35%	5.19%	16.12%	784,148
▲ Merval (Argentina)	41,261.95	-1.27%	3.37%	22.20%	36.21%	32,297

*Legend: Variation 1D: 1 Day; 5D: 5 Days; 1M: 1 Month; YTD: Var.% 12/31/18 to date

Equity

Alemania (Acciones del DAX Index)

Largest gains	Curr.	Price	▲%	Exchange	Largest losses	Curr.	Price	▼%	Exchange
DBK GY	EUR	6.932	2.67	Xetra	IFX GY	EUR	15.972	-0.89	Xetra
BMW GY	EUR	66.61	1.96	Xetra	1COV GY	EUR	43.81	-0.73	Xetra
ADS GY	EUR	278.65	1.77	Xetra	BAS GY	EUR	62.58	-0.24	Xetra
RWE GY	EUR	22.65	1.75	Xetra	FRE GY	EUR	48.155	0.16	Xetra

Europe (Stocks from STOXX EUROPE 600)

Largest gains	Curr.	Price	▲%	Exchange	Largest losses	Curr.	Price	▼%	Exchange
OSR GY	EUR	32.25	11.51	Xetra	UMI BB	EUR	27.52	-3.44	EN Brussels
UBI IM	EUR	2.473	6.78	Borsa Italiana	WRT1V FH	EUR	12.5	-2.95	Helsinki
BAMI IM	EUR	1.894	6.56	Borsa Italiana	EO FP	EUR	38.45	-2.93	EN Paris
PKN FW	PLN	95.96	5.99	Warsaw	ISS DC	DKK	195.6	-2.78	Copenhagen

Global Overview:

United States:

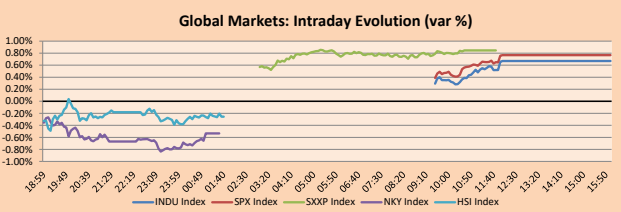
US shares closed at record highs on Wednesday as investors bet on a possible Federal Reserve rate cut later this month despite weaker-than-expected economic data. "The first time we get there, you're likely to see profit taking," said Scott Redler, a partner at T3live.com. "If the technology is still strong and the semiconductor gets some kind of bounce, it could probably push the S & P 500 through the 3,000." The shares of Facebook (+1.12%), Amazon (-0.09%), Netflix (+0.01%) and Google-parent, Alphabet (+0.01%), remained stable during the day, disappointing data strengthens the case of the Federal Reserve to reduce rates at its monetary policy meeting at the end of July, the central bank opened the door to an easier monetary policy by stating that "it will act as appropriate" to maintain the current economic expansion. "Looking around the world, the general business indicators are showing some deceleration and it seems that we are now starting to see a certain deceleration in the United States," said Scott Colyer, director of investments at Advisors Asset Management, but also commented: "In this recovery we have central banks very involved, and truly global central banks, which apply quantitative easing".

Europe:

Europe's main markets closed the day with positive returns, due to investors enthusiasm about the announcement that IMF president Christine Lagarde would have everything to succeed Mario Draghi as head of the European Central Bank and that, in addition, it would maintain the monetary policy "dovish". By country, Italy's MIB index rose +2.4%, after the European Union Commission ruled out sanctions against the country for violating the limits and the trajectory of the debt and fiscal deficit, which caused that the yields of Italian bonds sank and end with a spread of 201 basis points over the bonds. Regarding the shares, after the US Department of Commerce reported that Huawei will remain on the blacklist, shares of STMICROelectronics (-0.6%) and Infineon (-0.9%) fell, similarly, Siltronic stock fell -5.36% after the Deutsche Bank cut the price target per action. On the contrary, the shares of the electric Osram gave a jump of +11.5% after it was announced rumors that the board of directors would be scheduling an emergency meeting to discuss the purchase of the company by the companies Bain and Carlyle.

Asia:

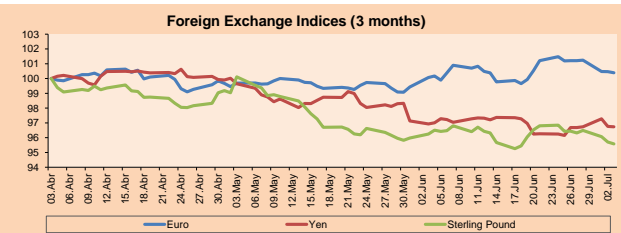
The Asian market ended the day with its main indexes downward. In Japan, stocks retreated, pressured by a stronger yen and profit taking between the shares of exporters and other cyclical names before the next holiday and employment data in the United States. While in China, shares fell amid weakening investor optimism about progress in US-China trade negotiations and new data from the services sector added to the signs of an internal slowdown. In other news, the Hong Kong securities regulator will be able to see audit work documents when companies based in mainland China are investigated, after it signed an agreement with Chinese authorities on Wednesday. At the corporate level, Samsung Electronics is likely to say that second-quarter earnings will be cut in half when Friday's preliminary earnings are reported, according to the data, as a drop in shipments of memory chips to the beleaguered Huawei, of China exacerbated the excess supply.



Source: Bloomberg

Currency	Price	1 D*	5 D*	1 M*	YTD*
▼ Euro	1.1277	-0.07%	-0.81%	0.32%	-1.66%
▼ Yen	107.8500	-0.03%	0.06%	-0.20%	-1.68%
▼ Sterling Pound	1.2576	-0.13%	-0.90%	-0.69%	-1.40%
▲ Yuan	6.8812	0.11%	0.02%	-0.33%	0.04%
▼ Hong Kong Dollar	7.7982	-0.01%	-0.13%	-0.48%	-0.43%
▼ Brazilian Real	3.8242	-0.62%	-0.52%	-1.60%	-1.30%
▼ Argentine Peso	42.0385	-0.32%	-1.53%	-6.32%	11.60%

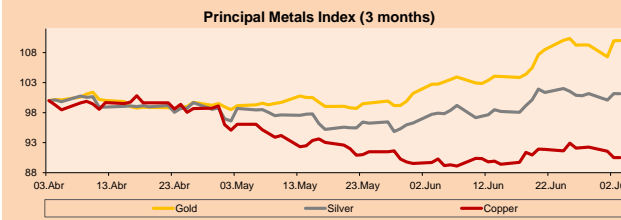
*Legend: Variation 1D: 1 Day; 5D: 5 Days; 1M: 1 Month; YTD: Var.% 12/31/18 to date



Base: 03/04/19=100
Source: Bloomberg

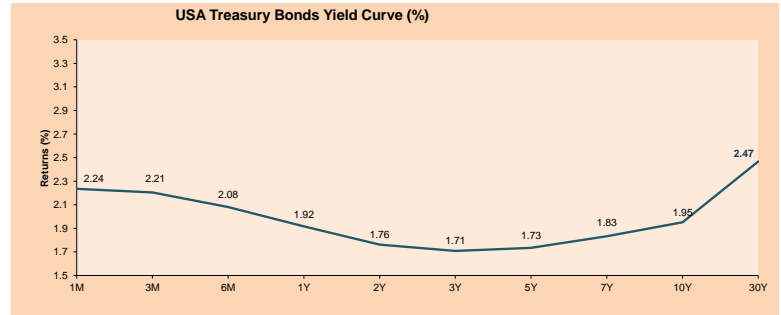
Commodities	Close	1 D*	5 D*	1 M*	YTD*
▲ Oro (US\$ Oz. T) (LME)	1,419.22	0.04%	0.72%	7.09%	10.66%
▼ Plata (US\$ Oz. T) (LME)	15.31	-0.03%	0.25%	3.50%	-1.20%
▼ Cobres (US\$ TM) (LME)	5,868.50	0.00%	-1.72%	0.90%	-1.35%
▼ Zinc (US\$ TM) (LME)	2,537.00	0.00%	-2.24%	-2.87%	0.73%
▲ Petróleo WTI (US\$ Barril) (NYM)	57.40	2.04%	-3.33%	7.53%	20.59%
▼ Estano (US\$ TM) (LME)	17,684.00	0.00%	-5.90%	-8.71%	-9.51%
▼ Plomo (US\$ TM) (LME)	1,879.50	0.00%	-2.11%	3.87%	-6.35%
▲ Acaúcar #11 (US\$ Libra) (NYB-ICE)	12.54	1.54%	1.79%	0.32%	0.08%
▼ Cacao (US\$ TM) (NYB-ICE)	2,433.00	-1.58%	-1.14%	3.22%	-1.34%
▲ Café Arábica (US\$ TM) (NYB-ICE)	113.65	3.65%	7.17%	6.91%	2.76%

*Lenda: Variación 1D: 1 Día; 5D: 5 Días; 1M: 1 Mes; YTD: Var.% 31/12/17 a la fecha



Base: 03/04/19=100
Source: Bloomberg

ETFs	Curr.	Close	1D	5D	30 D	YTD	Exchange
SPDR S&P 500 ETF TRUST	USD	298.80	0.80%	2.67%	9.35%	20.67%	NYSE Arca
ISHARES MSCI EMERGING MARKET	USD	43.23	-0.18%	1.31%	6.04%	11.52%	NYSE Arca
ISHARES IBOXX HIGH YLD CORP	USD	87.34	0.38%	0.94%	3.64%	10.60%	NYSE Arca
FINANCIAL SELECT SECTOR SPDR	USD	28.08	0.79%	4.12%	7.81%	19.09%	NYSE Arca
VANECK VECTORS GOLD MINERS E	USD	25.65	0.39%	0.51%	14.05%	21.62%	NYSE Arca
ISHARES RUSSELL 2000 ETF	USD	156.26	0.72%	3.62%	7.13%	17.42%	NYSE Arca
SPDR GOLD SHARES	USD	133.63	0.16%	0.50%	6.81%	10.21%	NYSE Arca
ISHARES 20+ YEAR TREASURY BO	USD	134.21	0.71%	1.90%	1.54%	11.86%	NASDAQ GM
INVECO QQQ TRUST SERIES 1	USD	191.44	0.75%	3.04%	12.78%	24.60%	NASDAQ GM
ISHARES NASDAQ BIOTECHNOLOGY	USD	110.93	1.17%	4.83%	9.85%	15.13%	NASDAQ GM
ENERGY SELECT SECTOR SPDR	USD	63.00	0.40%	-0.71%	6.81%	11.72%	NYSE Arca
PROSHARES ULTRA VIX ST FUTUR	USD	27.00	-1.10%	-18.16%	-33.43%	-68.98%	NYSE Arca
UNITED STATES OIL FUND LP	USD	11.77	0.60%	-4.23%	7.10%	21.84%	NYSE Arca
ISHARES MSCI BRAZIL ETF	USD	43.88	0.92%	0.76%	5.91%	16.33%	NYSE Arca
SPDR S&P OIL & GAS EXP & PR	USD	26.18	-0.23%	-2.46%	1.63%	-0.74%	NYSE Arca
UTILITIES SELECT SECTOR SPDR	USD	60.71	0.70%	2.34%	4.02%	16.50%	NYSE Arca
ISHARES US REAL ESTATE ETF	USD	90.16	1.33%	4.40%	4.18%	22.10%	NYSE Arca
SPDR S&P BIOTECH ETF	USD	88.89	1.45%	6.07%	10.61%	23.89%	NYSE Arca
ISHARES IBOXX INVESTMENT GRA	USD	124.03	0.27%	1.59%	3.69%	12.73%	NYSE Arca
ISHARES JP MORGAN USD EMERGI	USD	113.94	0.27%	1.53%	4.56%	12.36%	NASDAQ GM
REAL ESTATE SELECT SECT SPDR	USD	37.92	1.44%	4.32%	4.40%	24.00%	NYSE Arca
ISHARES CHINA LARGE-CAP ETF	USD	43.13	-0.37%	1.91%	7.47%	11.49%	NYSE Arca
CONSUMER STAPLES SPDR	USD	59.66	1.24%	2.86%	6.76%	19.03%	NYSE Arca
VANECK VECTORS JUNIOR GOLD M	USD	34.92	0.00%	0.23%	12.43%	15.55%	NYSE Arca
SPDR BBG BARC HIGH YIELD BND	USD	109.01	0.35%	0.84%	3.55%	11.29%	NYSE Arca
VANGUARD REAL ESTATE ETF	USD	89.94	1.19%	4.59%	4.25%	22.64%	NYSE Arca



Source: Bloomberg

Capital Market Laboratory Coordinator: Economist Bruno Bellido Anicama
Colaboration: Juan Carlos Figueroa, Pablo Llanos, Jorge Retamozo y Marcia Rojas
e-mail: pulsobursatil@ulima.edu.pe
facebook: www.facebook.com/pulsobursatilul
Phone number: 4376767 Annex: 35340

PULSO BURSÁTIL

LIMA

Stocks

Ticker	Currency	Price	1D*	5D*	30D*	YTD*	Frequency	Volume (US\$)	Beta	Dividend Yield (%)	Price Earning	Market Cap. (M US\$)	Economic Sector*	Index Weight
▼ ALICORC1 PE**	S/.	10.34	-0.10%	0.58%	-2.91%	6.24%	100.00%	1,366,069	0.63	2.32	19.96	2,676.94	Industrial	3.53%
▼ ATACOCB1 PE**	S/.	0.20	-1.46%	-3.81%	-1.46%	-37.27%	100.00%	4,115	0.49	0.00	5.58	57.98	Mining	1.02%
▲ BACKUSH1 PE**	S/.	23.90	0.42%	8.64%	6.46%	18.42%	80.00%	24,618	0.35	5.64	7.79	8,892.19	Industrial	0.82%
▲ BAP PE**	US\$	234.20	0.71%	2.49%	5.69%	8.54%	100.00%	498,275	1.11	2.58	-	18,680.14	Diverse	5.82%
▼ BVN PE**	US\$	16.58	-0.30%	0.42%	5.74%	3.36%	95.00%	124,560	1.72	0.69	-	4,561.28	Mining	5.88%
▼ CASAGRC1 PE**	S/.	3.29	-0.60%	0.00%	1.23%	-18.97%	100.00%	5,449	0.51	0.58	11.64	84.19	Agricultural	1.31%
▲ BBVAC1 PE**	S/.	3.75	0.54%	0.81%	1.35%	-1.42%	100.00%	64,846	0.61	4.03	14.05	6,116.07	Finance	2.85%
- CORAREH1 PE**	S/.	0.74	0.00%	1.37%	10.45%	9.14%	100.00%	4,451	0.86	7.56	3.96	331.31	Industrial	1.72%
▲ CPACASC1 PE**	S/.	5.79	1.76%	3.21%	-0.17%	-10.23%	95.00%	75,579	0.42	6.51	32.17	753.03	Industrial	2.38%
▲ CVERDEC1 PE**	US\$	21.56	0.28%	-2.40%	7.80%	5.51%	95.00%	19,382	0.90	1.99	41.54	7,547.21	Mining	5.25%
- ENDEPEC1 PE**	S/.	2.35	0.00%	3.07%	4.44%	24.34%	70.00%	2,574	0.67	0.00	10.46	2,026.63	Public Services	1.44%
▲ ENDISPC1**	S/.	5.50	2.04%	1.85%	3.58%	6.75%	50.00%	1,671	0.69	4.02	9.52	1,066.96	Public Services	0.98%
▼ FERREYC1 PE**	S/.	2.30	-1.71%	2.22%	9.06%	-2.38%	100.00%	384,223	0.74	2.23	8.91	681.74	Diverse	4.90%
▼ GRAMONC1 PE**	S/.	1.94	-0.51%	-5.37%	-6.73%	-2.51%	80.00%	17,623	0.82	0.00	-	429.90	Diverse	4.05%
▲ IFS PE**	US\$	46.30	0.63%	3.46%	6.41%	14.48%	90.00%	16,395	0.65	3.78	14.60	5,237.03	Diverse	7.22%
- INRETC1 PE**	US\$	39.00	0.00%	0.00%	7.14%	39.04%	95.00%	5,850	1.00	0.87	40.67	4,009.49	Diverse	5.28%
▲ LUSURC1 PE**	S/.	14.27	0.63%	5.70%	17.90%	34.32%	90.00%	375,665	0.39	5.54	11.96	2,111.01	Public Services	1.81%
▲ MINSUR1 PE**	S/.	1.68	0.60%	0.00%	8.39%	27.27%	85.00%	26,096	1.43	4.51	-	1,471.41	Mining	3.09%
▼ PML PE**	US\$	0.12	-0.83%	-0.83%	2.56%	-31.43%	45.00%	4,397	1.62	0.00	-	31.66	Mining	2.12%
- RELAPAC1 PE**	S/.	0.12	0.00%	2.54%	5.22%	-3.97%	100.00%	20,454	0.59	0.00	-	305.81	Industrial	2.12%
- SCCO PE**	US\$	37.97	0.00%	-2.64%	10.25%	28.67%	85.00%	1,519	1.78	5.38	20.09	29,352.50	Mining	2.14%
- SIDERC1 PE**	S/.	0.71	0.00%	0.00%	12.70%	47.00%	100.00%	11,382	1.40	14.38	0.09	264.85	Industrial	1.43%
▲ TV PE**	US\$	0.21	0.95%	-3.64%	0.00%	-28.62%	100.00%	6,914	1.84	0.00	-	172.60	Mining	2.93%
▼ UNACEMC1 PE**	S/.	2.40	-0.83%	-2.04%	-3.23%	-6.76%	80.00%	8,649	0.71	2.17	12.85	1,325.61	Industrial	3.00%
- VOLCABC1 PE**	S/.	0.55	0.00%	3.77%	18.28%	-22.54%	100.00%	87,701	1.16	2.48	41.35	2,145.00	Mining	5.90%
- NEXAPEC1 PE**	S/.	3.35	0.00%	0.00%	0.30%	-8.74%	35.00%	38,255	1.11	0.00	11.76	1,346.06	Mining	1.56%

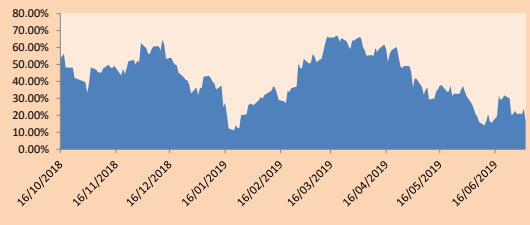
Quantity of shares: 26
 Source: Bloomberg, Económica
 * Bloomberg Industry Classification System
 ** PER is used in the stock market and original currency of the instrument
 *Legend: Variation 1D: 1 Day; 5D: 5 Days, 1M: 1 Month; YTD: Var.% 12/31/18 to date

Sectorial Indices

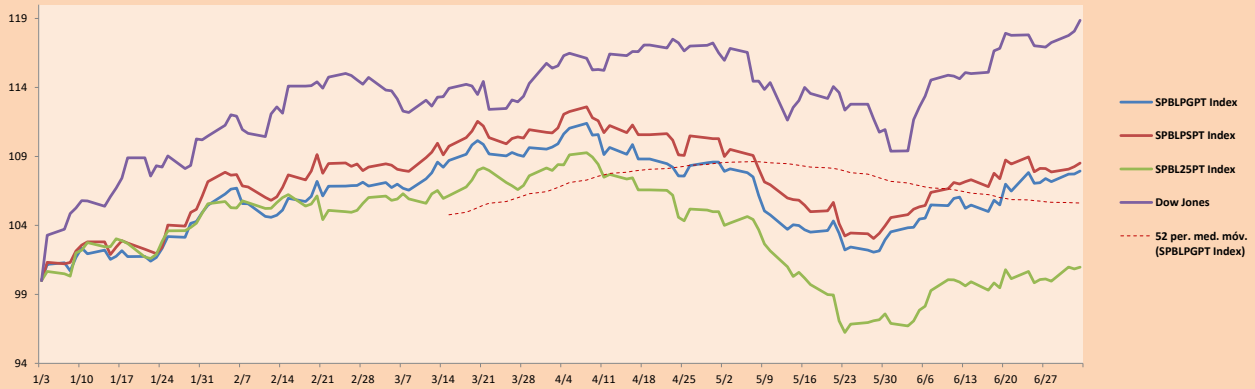
	Close	1D*	5D*	30D*	YTD*	Beta
▼ Mining Index	303.32	-0.04%	-1.04%	5.84%	6.49%	1.68
▲ Consumer Index	1,190.13	0.03%	1.22%	1.57%	18.35%	0.35
▼ Industrial Index	217.99	-0.51%	-0.07%	1.19%	-3.93%	0.43
▲ Banking and Financial Index	1,272.06	0.66%	2.18%	3.29%	6.01%	1.10
▲ Construction Index	235.16	0.10%	-1.26%	-2.49%	-4.36%	0.38
▲ Services Index	482.02	0.78%	4.01%	8.94%	21.23%	0.11
▼ Juniors Index	19.98	-0.35%	-0.60%	1.06%	-32.13%	0.31
▲ Electric Index	470.57	0.78%	4.01%	8.94%	21.23%	0.11

*Legend: Variation 1D: 1 Day; 5D: 5 Days, 1M: 1 Month; YTD: Var.% 12/31/18 to date

Correlation Graph of Returns of Mining Index against Metallic Index of London (3 months)



Indices (6 months)



Source: Bloomberg

Capital Market Laboratory Coordinator: Economist Bruno Bellido Anicama
 Collaboration: Juan Carlos Figueroa, Pablo Llanos, Jorge Retamozo y Marcia Rojas.
 e-mail: pulsobursatil@ulima.edu.pe
 facebook: www.facebook.com/pulsobursatil.ul
 Phone number : 4376767 Annex: 35340

The content of this document is just for informational purposes. The information and opinions expressed should not be considered as recommendations for future decisions. Under any circumstances, the Capital Market Laboratory of University of Lima will be responsible for the use of the statements in this document.

PULSO BURSÁTIL

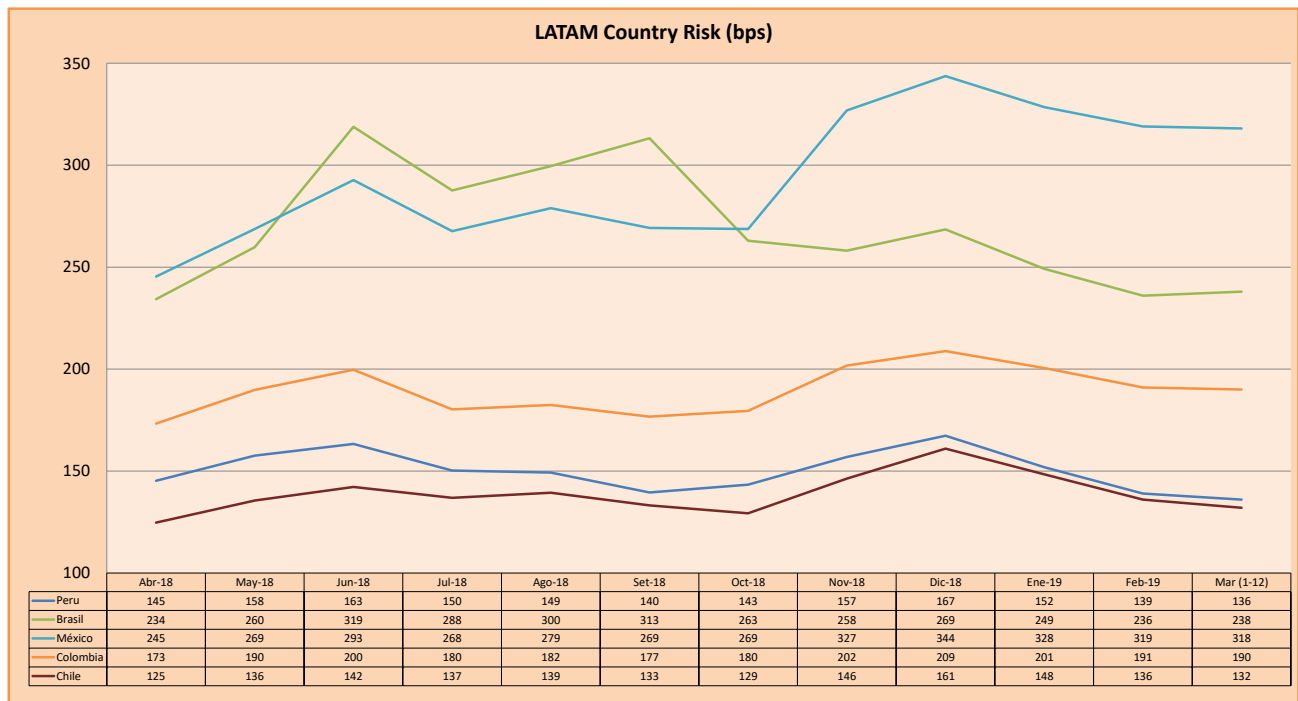
SOVEREIGN RATING

RISK RATINGS			
Moody's	S&P	Fitch	
Aaa	AAA	AAA	Prime
Aa1	AA+	AA+	High credit quality
Aa2	AA	AA	
Aa3	AA-	AA-	
A1	A+	A+	Medium-high grade, with low credit risk
A2	A	A	
A3	A-	A-	
Baa1	BBB+	BBB+	Moderate Credit Risk
Baa2	BBB	BBB	
Baa3	BBB-	BBB-	
Ba1	BB+	BB+	It has speculative elements and it is subject to substantial credit risk
Ba2	BB	BB	
Ba3	BB-	BB-	
B1	B+	B+	It is considered speculative and it has high credit risk
B2	B	B	
B3	B-	B-	
Caa1	CCC+	CCC	Bad credit conditions and it is subject to high credit risk
Caa2	CCC		
Caa3	CCC-		
Ca	CC	DDD	Very close to default or in default
C	C		
	D		

Source: Bloomberg

Latin America Credit Rating			
Clasificadora de riesgo			
Country	Moody's	Fitch	S&P
Peru	A3	BBB+	BBB+
Mexico	A3	BBB	BBB+
Venezuela	C	WD	SD
Brazil	Ba2	BB-	BB-
Colombia	Baa2	BBB	BBB-
Chile	A1	A	A+
Argentina	B2	B	B
Panama	Baa1	BBB	BBB+

Source: Bloomberg



Source: BCRP

Capital Market Laboratory Coordinator: Economist Bruno Bellido Anicama
Support: Juan Carlos Figueroa, Pablo Llanos, Jorge Retamozo y Marcia Rojas.
e-mail: pulsobursatil@ulima.edu.pe
facebook: www.facebook.com/pulsobursatil.ul
Phone number : 4376767 Annex: 35340

The content of this document is just for informational purposes. The information and opinions expressed should not be consider as recommendations for future decisions. Under any circumstances, the Capital Market Laboratory of University of Lima will be responsible for the use of the statements in this document.