



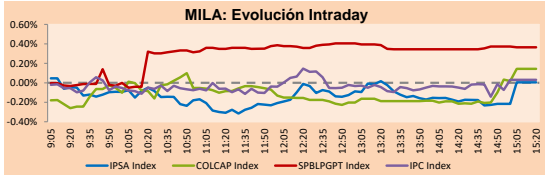
PULSO BURSÁTIL

Lima, July 4, 2019

MILA

Main Indices	Close	1 D	5 D	1 M	YTD	Market Cap. (US\$ bill)
▼ IPSA (Chile)	5,054.87	0.00%	-0.38%	0.99%	-0.99%	150.52
▼ IGPA (Chile)	25,701.58	0.00%	-0.39%	0.86%	-0.96%	195.06
▲ IGBC (Colombia)	12,743.96	0.09%	1.10%	4.82%	14.36%	104.21
▲ COLCAP (Colombia)	1,565.96	0.14%	1.05%	4.58%	18.10%	105.99
▲ S&P/BVL (Perú)*	20,846.10	0.36%	0.87%	4.30%	7.73%	110.40
▲ S&P/BVL SEL (Perú)	553.73	0.69%	1.05%	3.89%	8.08%	82.44
▲ S&P/BVL LIMA 25	26,396.61	0.38%	1.23%	4.41%	-0.42%	90.70
▲ IPC (México)	43,461.48	-0.05%	0.33%	0.51%	4.37%	282.58
▼ S&P MILA 40	652.30	1.18%	0.27%	5.34%	7.18%	270.65

* Market Cap. Of the last price Legend: Variation 1D: 1 day; 5D: 5 days; 1M: 1 Month; YTD: Var%12/31/18 to date

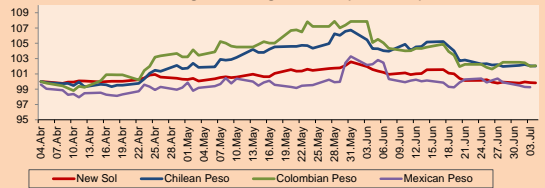


Source: Bloomberg

Currency	Price	1D*	5D*	30 D*	YTD*
▼ New Sol (PEN)	3,291.11	-0.02%	0.01%	-1.72%	-2.31%
▼ Chilean Peso (CLP)	679.05	-0.02%	-0.17%	-2.19%	-2.10%
▲ Colombian Peso (COP)	3,198.11	0.09%	0.01%	-2.86%	-1.59%
▼ Mexican Peso (MXN)	19.01	-0.05%	-0.90%	-2.85%	-3.28%

*Legend: Variation 1D: 1 day; 5D: 5 days; 1M: 1 Month; YTD: Var%12/31/18 to date

MILA: Foreign Exchange Indices (3 months)

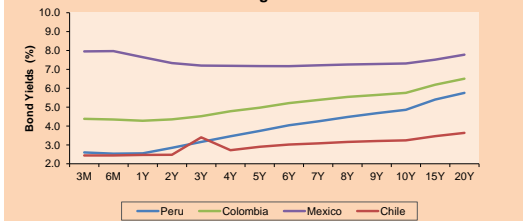


Base: 04/04/19=100
Source: Bloomberg

Fixed Income

Instrument	Currency	Price	Bid Yield (%)	Ask Yield (%)	Duration
PERU 4.125 08/25/2027	USD	112.013	2.50	2.47	6.91
PERU 7.35 07/21/25	USD	128.122	2.35	2.31	4.94
PERU 8.75 11/21/33	USD	163.222	3.23	3.21	9.62
PERU 6.55 03/14/37	USD	142.564	3.35	3.34	11.25
PERU 5.625 11/18/2050	USD	139.317	3.54	3.54	17.40
CHILE 2.25 10/30/22	USD	100.517	2.14	2.03	3.16
CHILE 3.875 08/05/20	USD	102.098	2.06	1.73	1.04
CHILE 3.625 10/30/2042	USD	105.768	3.28	3.26	16.06
COLOM 11.75 02/25/20	USD	106.028	2.22	1.92	0.60
COLOM 11.85 03/09/28	USD	159.671	3.77	3.69	6.07
COLOM 10.375 01/28/33	USD	157.738	4.67	4.54	8.41
COLOM 7.375 09/18/37	USD	137.898	4.36	4.33	11.16
COLOM 6.125 01/18/41	USD	125.524	4.31	4.28	12.83
MEX 4 10/02/23	USD	104.69	2.85	2.78	3.85
MEX5.55 01/45	USD	117.751	4.389	4.385	14.43

MILA: Sovereign Yield Curves



Source: Bloomberg

Equity

Largest gains	Exchange	Amt.	Price	▲ %
MELON	Santia.	CLP	0.55	11.81
IFS	Lima	USD	50.00	7.99
POMALCC1	Lima	PEN	0.06	6.67
DUNCANFOX	Santia.	CLP	1100.00	4.76

Largest losses	Exchange	Amt.	Price	▼ %
CAMPOS	Santia.	CLP	25.10	-13.45
COLOSO	Santia.	CLP	38.00	-5.00
MINSUR1	Lima	PEN	1.65	-1.79
COLBUN	Santia.	CLP	137.00	-1.72

Per Turnover

Exchange	Amount (US\$)
CHILE	Santia. 6,641,670
CAP	Santia. 4,832,221
AGUAS-A	Santia. 4,615,628
VAPORES	Santia. 4,050,415
FALABELLA	Santia. 3,963,966

Per Volume

Exchange	Volume
CHILE	Santia. 112,105,727
ESVAL-C	Santia. 60,000,000
CHILE	Santia. 45,166,163
BSANTANDER	Santia. 42,895,197
NORTEGRAN	Santia. 10,000,000

South America

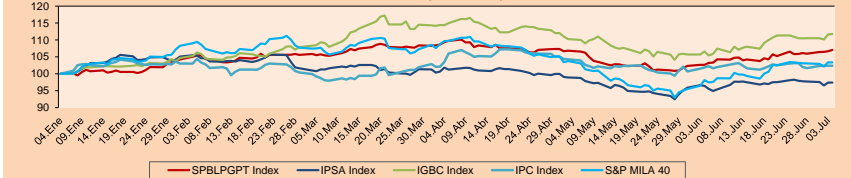
Peru: The General Index of the BVL ended today's session with a positive result of +0.36%. The index maintains a cumulative positive annual trend of +7.73% in local currency, while the adjusted yield in dollars amounts to +10.07%. Then, the S&P/BVL Peru SEL grew by +0.69% while the S&P/BVL LIMA 25 increased by +0.34%. The spot PEN reached S / 3.2911. **Highlights:** Intercorp plans to do an IPO in New York.

Chile: The IPSA index ended the day with a positive return of +0.00%. The sectors of the index with the most positive returns were Real Estate (+0.71%) and Materials (+0.40%). On the other hand, the securities with the highest results were Engie Energia Chile SA (+1.56%) and Cia Sud America de Vapores S (+1.22%). **Highlights:** Dollar crosses stable in a day of low turnover for holiday in USA.

Colombia: The COLCAP index closed the session with a positive result of +0.14%. The sectors with the highest yields were Industrials (+1.66%) and Consumer Staples (+0.69%). In addition, the best performers were Constructora Concreto SA (+1.83%) and Avianca Holdings SA (+1.62%). **Highlights:** Until June, car sales still accelerating.

Brazil: The IBOVESPA index closed the session with a positive result of +1.56%. The best performing sectors were Industrials (+2.11%) and Consumer Discretionary (+1.83%). In addition, the stocks with the best performance Gol Linhas Aereas Inteligentes (+7.31%) and B2W Cia Digital (+6.10%). **Highlights:** Brazil markets rally due to pension reform clears key hurdle.

MILA: Stock Indices (6 months)

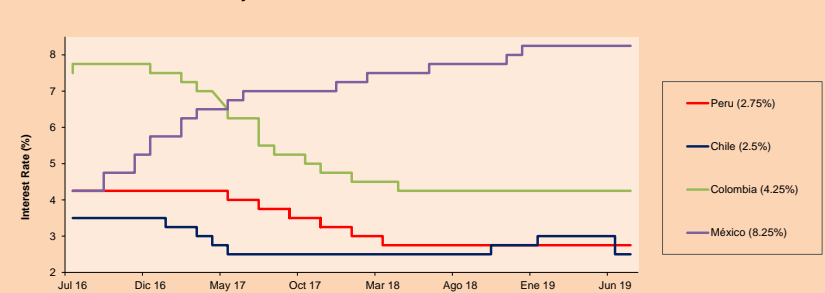


Base: 07/01/19=100
Source: Bloomberg

ETFs

	Curr.	Close	1D	5D	30 D	YTD	Exchange
- iShares MSCI All Peru Caped Index Fund	USD	37.2257	0.00%	0.50%	6.99%	#N/A	NYSE Arca
- iShares MSCI Chile Capped	USD	40.44	0.00%	-0.47%	2.70%	#N/A	Cboe BZX
- Global X MSCI Colombia	USD	13.1	0.00%	-1.28%	6.68%	#N/A	NYSE Arca
- iShares MSCI Mexico Capped	USD	43.98	0.00%	0.99%	3.25%	#N/A	NYSE Arca
- iShares MSCI Emerging Markets	USD	43.23	0.00%	0.61%	5.81%	#N/A	NYSE Arca
- Vanguard FTSE Emerging Markets	USD	43.13	0.00%	1.34%	6.21%	#N/A	NYSE Arca
- iShares Core MSCI Emerging Markets	USD	51.97	0.00%	0.80%	5.65%	#N/A	NYSE Arca
- iShares JP Morgan Emerging Markets Bonds	USD	59.2	0.00%	0.51%	3.56%	#N/A	Cboe BZX
- Morgan Stanley Emerging Markets Domestic	USD	6.91	0.00%	0.00%	6.97%	#N/A	New York

MILA: Policy Rate



Source: Bloomberg

Capital Market Laboratory Coordinador: Economist Bruno Bellido Anicama
Collaboration: Juan Carlos Figueroa, Pablo Llanos, Jorge Retamozo y Marcia Rojas.
e-mail: pulsohorsatil@ulima.edu.pe
facebook: www.facebook.com/pulsohorsatil.ul
Phone number : 4376767 Annex: 35340

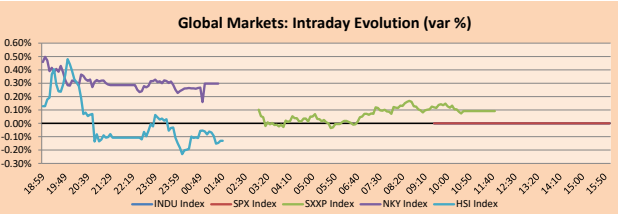


PULSO BURSÁTIL

WORLD

Main Indices	Close	1 D*	5 D*	1 M*	YTD*	Market Cap. (US\$ Mill.)
▲ Dow Jones (USA)	26,966.00	0.67%	1.62%	6.45%	15.60%	7,522,549
▲ Standard & Poor's 500 (USA)	2,995.82	0.77%	2.82%	6.87%	19.51%	25,869,311
▲ NASDAQ Composite (USA)	8,170.23	0.75%	3.29%	8.54%	23.13%	12,622,729
▲ Stoxx EUROPE 600 (Europe)	392.94	0.09%	2.81%	5.44%	16.37%	9,362,973
▲ DAX (Germany)	12,629.90	0.11%	2.92%	5.50%	19.61%	1,040,084
▼ FTSE 100 (United Kingdom)	7,603.58	-0.08%	2.72%	5.40%	13.01%	1,623,361
▲ CAC 40 (France)	5,620.73	0.03%	2.31%	6.69%	18.81%	1,533,692
▲ IBEX 35 (Spain)	9,401.00	0.07%	2.77%	3.11%	10.08%	518,387
▼ MSCI AC Asia Pacific Index	161.69	-0.33%	0.84%	6.08%	10.21%	18,600,190
▼ HANG SENG (Hong Kong)	28,795.77	-0.21%	2.03%	7.07%	11.41%	2,717,868
▼ SHANGHAI SEC Comp. (China)	3,005.25	-0.33%	0.28%	5.03%	20.50%	4,810,563
▲ NIKKEI 225 (Japan)	21,702.45	0.30%	1.71%	4.46%	8.43%	3,335,437
▲ BOVESPA (Brazil)	103,636.20	1.56%	2.89%	6.42%	17.92%	800,946
▼ MERVAL (Argentina)	41,380.38	0.18%	0.61%	19.25%	36.60%	32,149

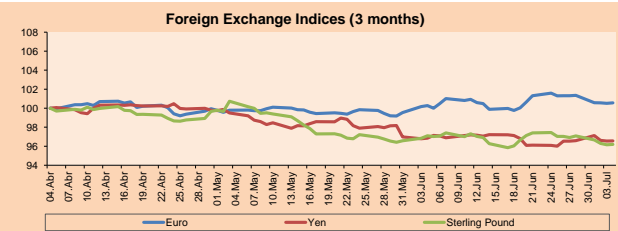
*Legend: Variation 1D: 1 Day; 5D: 5 Days; 1M: 1 Month; YTD: Var.% 12/31/18 to date



Source: Bloomberg

Currency	Price	1 D*	5 D*	1 M*	YTD*
▲ Euro	1.1285	0.06%	-0.74%	0.29%	-1.59%
▲ Yen	107.8200	0.01%	0.03%	-0.31%	-1.70%
▲ Sterling Pound	1.2579	0.04%	-0.75%	-0.94%	-1.37%
▼ Yuan	6.8716	-0.14%	-0.08%	-0.53%	-0.10%
▼ Hong Kong Dollar	7.7869	-0.14%	-0.36%	-0.70%	-0.57%
▼ Brazilian Real	3.8021	-0.72%	-0.46%	-1.42%	-1.87%
▼ Argentine Peso	41.8150	-0.53%	-2.07%	-6.49%	11.01%

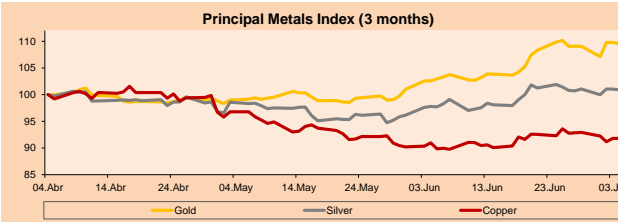
*Legend: Variation 1D: 1 Day; 5D: 5 Days; 1M: 1 Month; YTD: Var.% 12/31/18 to date



Base: 04/04/19=100
Source: Bloomberg

Commodities	Close	1 D*	5 D*	1 M*	YTD*
▼ Oro (US\$ Oz. T) (LME)	1,416.09	-0.18%	0.49%	6.83%	10.42%
▼ Plata (US\$ Oz. T) (LME)	15.29	-0.11%	0.19%	3.19%	-1.32%
▼ Cobres (US\$ TM) (LME)	5,908.75	0.00%	-1.13%	0.93%	-0.68%
▼ Zinc (US\$ TM) (LME)	2,493.00	0.00%	-2.35%	-4.46%	-1.01%
▼ Petroleo WTI (US\$ Barril) (NYM)	57.34	0.00%	-3.52%	6.92%	20.46%
▼ Estano (US\$ TM) (LME)	18,303.00	0.00%	-2.87%	-4.94%	-6.23%
▼ Plomo (US\$ TM) (LME)	1,864.75	0.00%	-3.44%	0.88%	-7.09%
▼ Añúcar #11 (US\$ Libra) (NYB-ICE)	12.54	0.00%	-1.88%	-0.79%	0.08%
▼ Cacao (US\$ TM) (NYB-ICE)	2,433.00	0.00%	-0.82%	2.57%	-1.34%
▼ Café Arabica (US\$ TM) (NYB-ICE)	113.65	0.00%	6.51%	5.04%	2.76%

*Lenda: Variación 1D: 1 Día; 5D: 5 Días; 1M: 1 Mes; YTD: Var.% 31/12/17 a la fecha



Base: 04/04/19=100
Source: Bloomberg

Equity

Alemania (Acciones del DAX Index)

Largest gains	Curr.	Price	▲%	Exchange	Largest losses	Curr.	Price	▼%	Exchange
IFX GY	EUR	16.154	1.14	Xetra	HEI GY	EUR	70.54	-1.29	Xetra
VNA GY	EUR	44.79	1.08	Xetra	EOAN GY	EUR	9.8	-0.57	Xetra
DBK GY	EUR	7.002	1.01	Xetra	LIN GY	EUR	178.75	-0.53	Xetra
DTE GY	EUR	15.52	1.00	Xetra	SAP GY	EUR	123.76	-0.50	Xetra

Europe (Stocks from STOXX EUROPE 600)

Largest gains	Curr.	Price	▲%	Exchange	Largest losses	Curr.	Price	▼%	Exchange
SALM NO	NOK	426.3	5.21	Oslo	NTGY SQ	EUR	24.05	-3.37	Soc.Bol SIBE
UCG IM	EUR	11.69	4.96	Borsa Italiana	EVN LN	Gbp	653	-2.89	Londres
EZJ LN	Gbp	1013.5	4.08	Londres	DOM SS	SEK	90.66	-2.73	Stockholm
IAG LN	Gbp	457.7	3.86	Londres	SESG FP	EUR	13.65	-2.29	EN Paris

Global Overview:

United States:

Today was a holiday due to Independence Day.

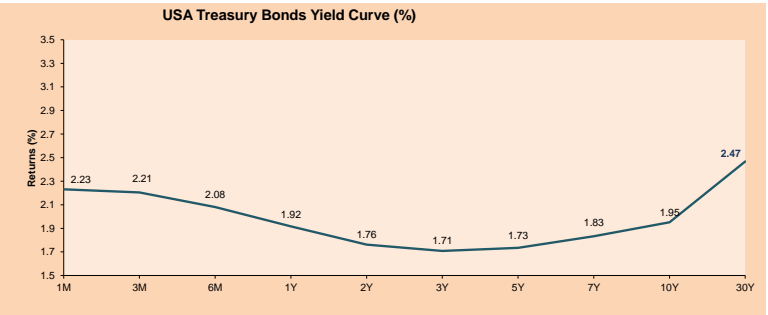
Europe:

The European market closed at its highest level in more than a year. The Stoxx 600 rose 0.1%, extending its positive streak, the sixth consecutive session with the optimism that Christine Lagarde will maintain the moderate stance of the European Central Bank (ECB) as the next head of that entity. Likewise, expectations of lower borrowing costs have helped European stocks recover from May losses and their rally in 2019, with STOXX increasing by more than 16% this year. The Italian FTSE MIB index rose 1%, which highlights that Italy has dodged the threat of EU disciplinary measures on its public finances after these new measures would help its growing debt in line with fiscal rules. In other news, the eurozone's economic slowdown is no longer temporary, and the ECB must provide more monetary stimulus until there is a better economic and inflation outlook, according to Olli Rehn, head of the Finnish central bank. In addition, he noted that the political action could include a combination of rate cuts, a revised interest rate guide or the resumption of bond purchases.

Asia:

The Asian market closed the day higher supported by the hope that the US Federal Reserve cut interest rates, after the latest data indicated a slowdown in the country's economy. On the other hand, in China, stocks closed lower due to a fall in the main consumer stocks, even when investors were waiting for the events around the trade negotiations. In other news, South Korea said on Thursday it could retaliate against Japan's latest export limits on high-tech materials, as a dispute over forced labor during the war threatened to disrupt the world's supply of chips, memory and smart phones. In corporate news, Budweiser APAC will not rely on merger and acquisition (M & A) agreements to expand after the Asian-Pacific business of brewing giant Anheuser-Busch InBev (AB InBev) is in Hong Kong, according to the findings of the executive director of the Asian company. Meanwhile, China's leading search engine operator, Baidu Inc., joined Zhejiang Geely Holding Group and Japan's Toyota Motor Corp. to cooperate in areas related to artificial intelligence (AI) in the form of a boost for cars that drive by themselves.

ETFs	Curr.	Close	1D	5D	30 D	YTD	Exchange
SPDR S&P 500 ETF TRUST	USD	298.80	0.00%	2.65%	7.03%	20.67%	NYSE Arca
ISHARES MSCI EMERGING MARKET	USD	43.23	0.00%	0.61%	5.61%	11.52%	NYSE Arca
ISHARES IBOXX HIGH YLD CORP	USD	87.34	0.00%	0.66%	2.61%	10.60%	NYSE Arca
FINANCIAL SELECT SECTOR SPDR	USD	28.08	0.00%	3.20%	4.96%	19.09%	NYSE Arca
VANECK VECTORS GOLD MINERS E	USD	25.65	0.00%	1.28%	13.55%	21.62%	NYSE Arca
ISHARES RUSSELL 2000 ETF	USD	156.26	0.00%	1.71%	4.43%	17.42%	NYSE Arca
SPDR GOLD SHARES	USD	133.63	0.00%	0.59%	6.78%	10.21%	NYSE Arca
ISHARES 20+ YEAR TREASURY BO	USD	134.21	0.00%	1.18%	2.71%	11.86%	NASDAQ GM
INVESCO QQQ TRUST SERIES 1	USD	191.44	0.00%	2.65%	9.69%	24.60%	NASDAQ GM
ISHARES NASDAQ BIOTECHNOLOGY	USD	110.93	0.00%	3.40%	7.77%	15.13%	NASDAQ GM
ENERGY SELECT SECTOR SPDR	USD	63.00	0.00%	0.03%	5.00%	11.72%	NYSE Arca
PROSHARES ULTRA VIX ST FUTUR	USD	27.00	0.00%	-16.12%	-27.77%	-68.98%	NYSE Arca
UNITED STATES OIL FUND LP	USD	11.77	0.00%	-4.23%	5.47%	21.84%	NYSE Arca
ISHARES MSCI BRAZIL ETF	USD	43.88	0.00%	0.43%	4.41%	16.33%	NYSE Arca
SPDR S&P OIL & GAS EXP & PR	USD	26.18	0.00%	-2.20%	-0.94%	-0.74%	NYSE Arca
UTILITIES SELECT SECTOR SPDR	USD	60.71	0.00%	2.21%	3.93%	16.50%	NYSE Arca
ISHARES US REAL ESTATE ETF	USD	90.16	0.00%	3.21%	4.51%	22.10%	NYSE Arca
SPDR S&P BIOTECH ETF	USD	88.89	0.00%	3.42%	7.69%	23.89%	NYSE Arca
ISHARES IBOXX INVESTMENT GRA	USD	124.93	0.00%	1.00%	3.65%	12.75%	NYSE Arca
ISHARES JP MORGAN USD EMERGI	USD	113.94	0.00%	1.12%	3.94%	12.36%	NASDAQ GM
REAL ESTATE SELECT SECT SPDR	USD	37.92	0.00%	3.47%	4.97%	24.00%	NYSE Arca
ISHARES CHINA LARGE-CAP ETF	USD	43.13	0.00%	0.79%	7.87%	11.45%	NYSE Arca
CONSUMER STAPLES SPDR	USD	59.66	0.00%	2.67%	5.80%	19.03%	NYSE Arca
VANECK VECTORS JUNIOR GOLD M	USD	34.92	0.00%	0.75%	12.36%	15.55%	NYSE Arca
SPDR BBG BARC HIGH YIELD BND	USD	109.01	0.00%	0.59%	2.62%	11.29%	NYSE Arca
VANGUARD REAL ESTATE ETF	USD	89.94	0.00%	3.26%	4.72%	22.64%	NYSE Arca



Source: Bloomberg

Capital Market Laboratory Coordinator: Economist Bruno Bellido Anicama
Collaboration: Juan Carlos Figueroa, Pablo Llanos, Jorge Retamozo y Marcia Rojas
e-mail: pulsoBursatil@ulima.edu.pe
facebook: www.facebook.com/pulsoBursatil.ul
Phone number: 4376767 Annex: 35340

PULSO BURSÁTIL

LIMA

Stocks

Ticker	Currency	Price	1D*	5D*	30D*	YTD*	Frequency	Volume (US\$)	Beta	Dividend Yield (%)	Price Earning	Market Cap. (M US\$)	Economic Sector*	Index Weight
▲ ALICORC1 PE**	S/.	10.35	0.10%	0.29%	-2.82%	6.34%	100.00%	1,667,873	0.62	2.32	19.98	2,680.00	Industrial	3.53%
▲ ATACOCB1 PE**	S/.	0.20	0.00%	-1.94%	-1.46%	-37.27%	95.00%	4,116	0.55	0.00	5.58	57.99	Mining	1.02%
- BACKUSH1 PE**	S/.	23.90	0.00%	8.64%	6.55%	18.42%	80.00%	1,816	0.35	5.64	7.79	8,893.81	Industrial	0.82%
- BAP PE**	US\$	234.20	0.00%	1.41%	4.79%	8.54%	95.00%	498,275	1.11	0.00	-	18,680.14	Diverse	5.82%
- BVN PE**	US\$	16.58	0.00%	0.06%	6.42%	3.36%	90.00%	124,560	1.78	0.00	-	4,561.28	Mining	5.88%
- CASAGRC1 PE**	S/.	3.29	0.00%	-0.30%	7.87%	-18.97%	100.00%	62,798	0.51	0.58	11.64	84.21	Agricultural	1.31%
▼ BBVAC1 PE**	S/.	3.42	-0.03%	-0.81%	1.33%	-1.44%	100.00%	3,286	0.62	4.03	14.05	6,115.71	Finance	2.85%
- CORAREH1 PE**	S/.	0.74	0.00%	1.37%	8.82%	9.14%	100.00%	5,441	0.91	7.56	3.96	331.37	Industrial	1.72%
▼ CPACASC1 PE**	S/.	5.74	-0.86%	2.32%	-1.88%	-11.01%	95.00%	28,024	0.43	6.57	31.89	746.66	Industrial	2.38%
▼ CVERDEC1 PE**	US\$	21.50	-0.28%	-2.27%	9.14%	5.22%	100.00%	87,814	0.91	1.99	41.43	7,526.20	Mining	5.25%
▲ ENGEPEC1 PE**	S/.	2.38	1.28%	2.59%	5.78%	25.93%	75.00%	11,492	0.67	4.47	10.60	2,052.88	Public Services	1.44%
▲ ENDISPC1**	S/.	5.53	0.55%	2.79%	4.14%	7.34%	50.00%	100,911	0.69	4.00	9.57	1,072.97	Public Services	0.98%
- FERREYC1 PE**	S/.	2.30	0.00%	2.68%	6.48%	-2.38%	100.00%	75,820	0.75	2.23	8.91	681.86	Diverse	4.90%
- GRAMONC1 PE**	S/.	1.94	0.00%	-3.00%	-9.77%	-2.51%	75.00%	17,626	0.82	0.00	-	429.98	Diverse	4.05%
▲ IFS PE**	US\$	50.00	7.99%	10.86%	14.92%	23.63%	90.00%	1,448,721	0.64	3.50	15.75	5,655.54	Diverse	7.22%
- INRETC1 PE**	US\$	39.00	0.00%	0.00%	6.85%	39.04%	100.00%	6,513	1.00	0.87	40.64	4,009.49	Diverse	5.28%
- LUSURC1 PE**	S/.	14.27	0.00%	4.93%	17.90%	34.32%	90.00%	44,340	0.40	5.54	11.96	2,111.39	Public Services	1.81%
▼ MINSUR1 PE**	S/.	1.65	-1.79%	-4.07%	4.43%	25.00%	90.00%	32,204	1.43	4.59	-	1,445.40	Mining	3.09%
- PML PE**	US\$	0.12	0.00%	-0.83%	2.56%	-31.43%	40.00%	4,397	1.62	0.00	-	31.66	Mining	2.12%
▼ RELAPAC1 PE**	S/.	0.12	-0.83%	0.84%	2.56%	-4.76%	100.00%	1,823	0.62	0.00	-	303.33	Industrial	2.12%
- SCCO PE**	US\$	37.97	0.00%	-2.64%	10.25%	28.67%	80.00%	1,519	1.70	0.00	20.09	29,352.50	Mining	2.14%
- SIDERC1 PE**	S/.	0.71	0.00%	0.00%	10.94%	47.00%	100.00%	1,510	1.40	14.38	0.09	264.90	Industrial	1.43%
▼ TV PE**	US\$	0.21	-0.94%	-1.87%	-2.33%	-29.29%	100.00%	7,365	1.84	0.00	-	170.97	Mining	2.93%
- UNACEMC1 PE**	S/.	2.40	0.00%	-2.04%	-3.23%	-6.76%	80.00%	4,417	0.69	2.17	12.85	1,325.85	Industrial	3.00%
- VOLCABC1 PE**	S/.	0.55	0.00%	3.77%	18.28%	-22.54%	100.00%	19,036	1.06	2.48	41.37	2,145.39	Mining	5.90%
- NEXAPEC1 PE**	S/.	3.35	0.00%	0.00%	0.30%	-8.74%	40.00%	32,008	1.11	15.49	11.77	1,346.31	Mining	1.56%

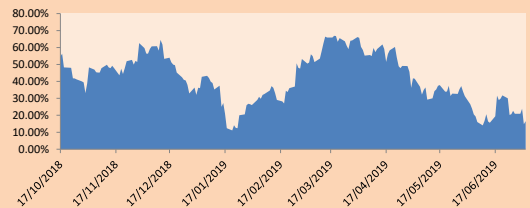
Quantity of shares: 26
Source: Bloomberg, Económica
* Bloomberg Industry Classification System
** PER is used in the stock market and original currency of the instrument
*Legend: Variation 1D: 1 Day; 5D: 5 Days, 1M: 1 Month; YTD: Var.% 12/31/18 to date

Sectorial Indices

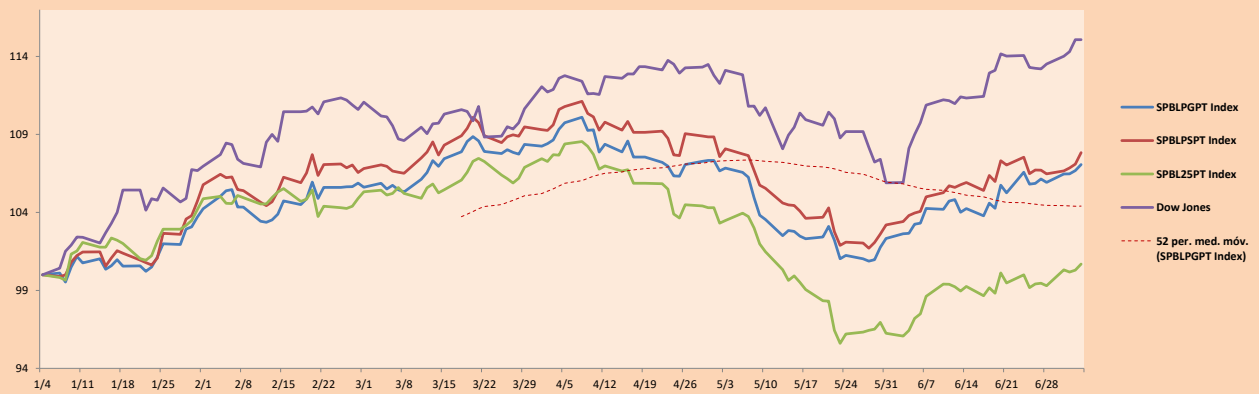
	Close	1D*	5D*	30D*	YTD*	Beta
▼ Mining Index	303.03	-0.10%	-1.06%	6.38%	6.39%	1.70
▲ Consumer Index	1,190.45	0.03%	1.18%	1.69%	18.38%	0.36
▼ Industrial Index	217.62	-0.17%	0.36%	-0.60%	-4.09%	0.42
▲ Banking and Financial Index	1,278.02	0.47%	1.89%	3.35%	6.50%	1.09
▼ Construction Index	234.59	-0.24%	-0.80%	-3.96%	-4.59%	0.37
▲ Services Index	484.83	0.64%	2.91%	9.57%	21.94%	0.11
- Juniors Index	19.98	0.00%	-0.35%	1.37%	-32.13%	0.36
▲ Electric Index	473.31	0.64%	2.91%	9.57%	21.93%	0.11

*Legend: Variation 1D: 1 Day; 5D: 5 Days, 1M: 1 Month; YTD: Var.% 12/31/18 to date

Correlation Graph of Returns of Mining Index against Metallic Index of London (3 months)



Indices (6 months)



Source: Bloomberg

Capital Market Laboratory Coordinator: Economist Bruno Bellido Anicama
Collaboration: Juan Carlos Figueroa, Pablo Llanos, Jorge Retamozo y Marcia Rojas.
e-mail: pulsoBursatil@ulima.edu.pe
facebook: www.facebook.com/pulsoBursatil.ul
Phone number : 4376767 Annex: 35340

The content of this document is just for informational purposes. The information and opinions expressed should not be considered as recommendations for future decisions. Under any circumstances, the Capital Market Laboratory of University of Lima will be responsible for the use of the statements in this document.

PULSO BURSÁTIL

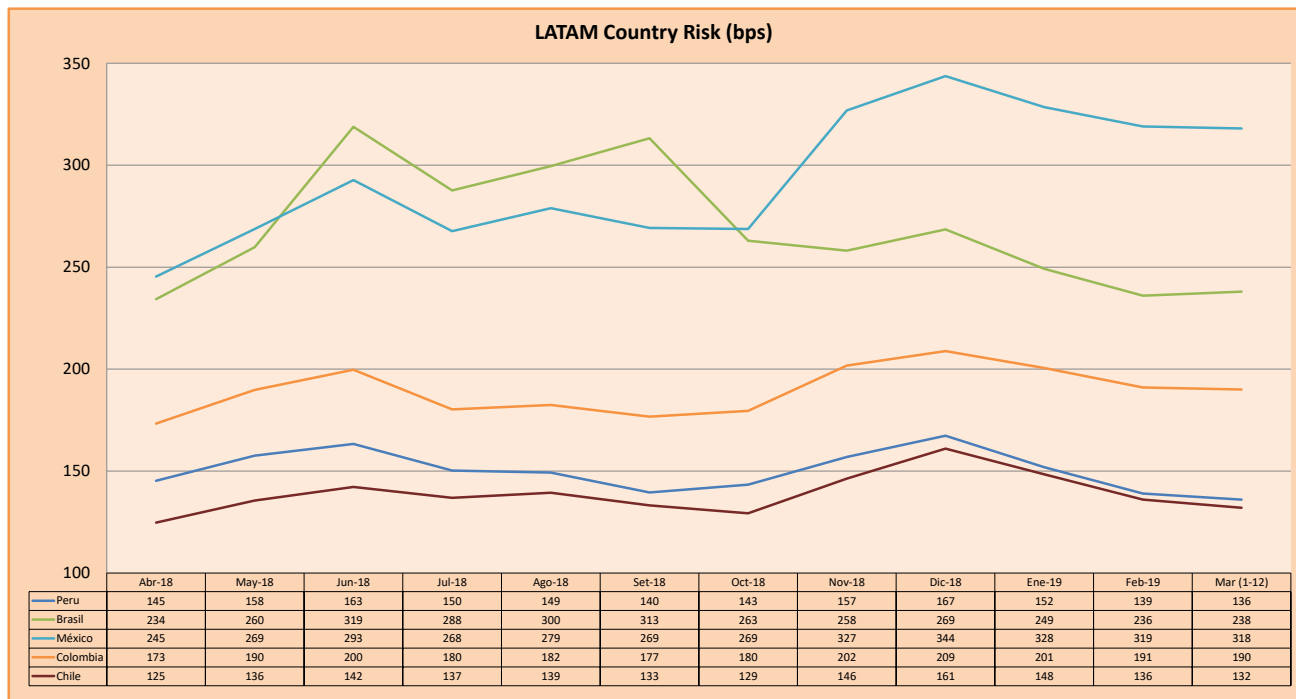
SOVEREIGN RATING

RISK RATINGS			
Moody's	S&P	Fitch	
Aaa	AAA	AAA	Prime
Aa1	AA+	AA+	High credit quality
Aa2	AA	AA	
Aa3	AA-	AA-	
A1	A+	A+	Medium-high grade, with low credit risk
A2	A	A	
A3	A-	A-	
Baa1	BBB+	BBB+	Moderate Credit Risk
Baa2	BBB	BBB	
Baa3	BBB-	BBB-	
Ba1	BB+	BB+	It has speculative elements and it is subject to substantial credit risk
Ba2	BB	BB	
Ba3	BB-	BB-	
B1	B+	B+	It is considered speculative and it has high credit risk
B2	B	B	
B3	B-	B-	
Caa1	CCC+	CCC	Bad credit conditions and it is subject to high credit risk
Caa2	CCC		
Caa3	CCC-		
Ca	CC	DDD	Very close to default or in default
	C		
C	D		

Source: Bloomberg

Latin America Credit Rating			
Clasificadora de riesgo			
Country	Moody's	Fitch	S&P
Peru	A3	BBB+	BBB+
Mexico	A3	BBB	BBB+
Venezuela	C	WD	SD
Brazil	Ba2	BB-	BB-
Colombia	Baa2	BBB	BBB-
Chile	A1	A	A+
Argentina	B2	B	B
Panama	Baa1	BBB	BBB+

Source: Bloomberg



Source: BCRP

Capital Market Laboratory Coordinator: Economist Bruno Bellido Anicama
Support: Juan Carlos Figueroa, Pablo Llanos, Jorge Retamozo y Marcia Rojas.
e-mail: pulsobursatil@ulima.edu.pe
facebook: www.facebook.com/pulsobursatil.ul
Phone number : 4376767 Annex: 35340

The content of this document is just for informational purposes. The information and opinions expressed should not be consider as recommendations for future decisions. Under any circumstances, the Capital Market Laboratory of University of Lima will be responsible for the use of the statements in this document.