

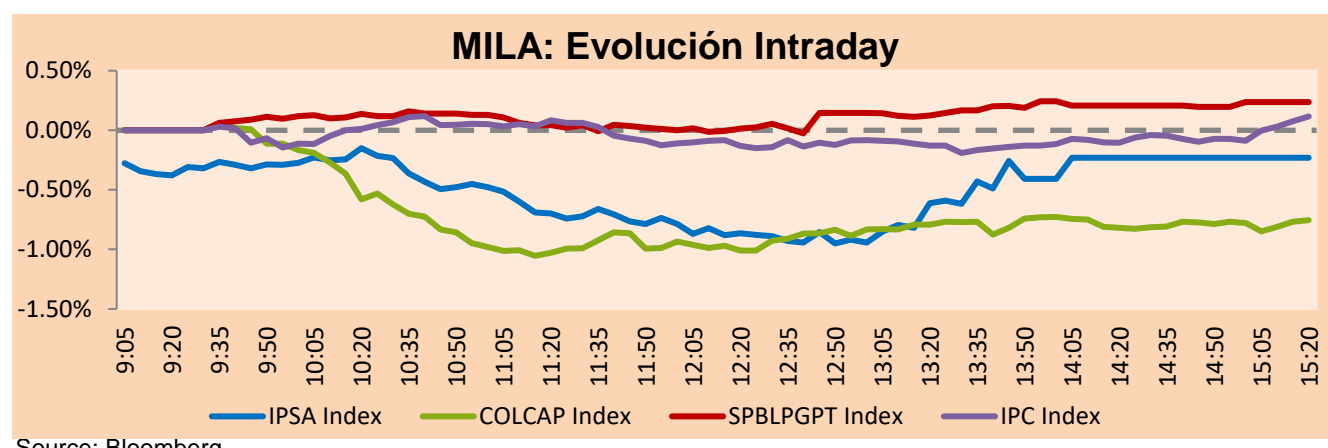


# PULSO BURSÁTIL

Lima, January 9, 2020

## MILA

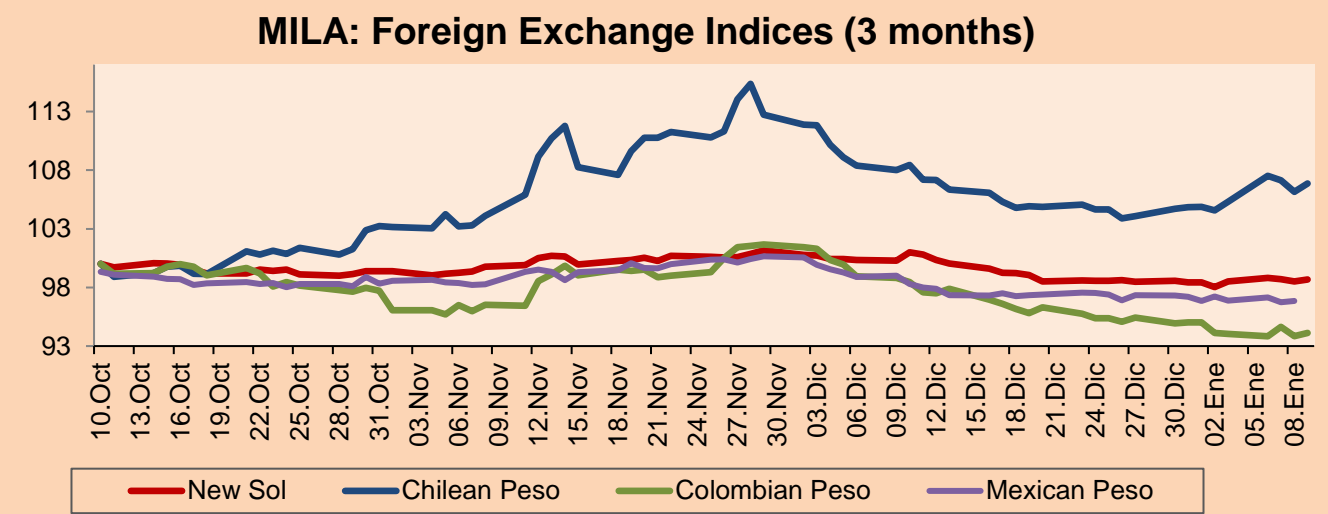
Main Indexes	Close	1 D	5 D	1 M	YTD	Cap. Burs. (US\$ bill)
▼ IPSA (Chile)	4,898.43	-0.23%	1.95%	3.16%	4.89%	131.02
▼ IGPA (Chile)	24,429.78	-0.25%	1.85%	3.23%	4.43%	167.23
▼ COLCAP (Colombia)	1,653.54	-0.21%	-0.53%	3.00%	-0.53%	109.26
▲ S&P/BVL (Perú)*	20,420.17	0.17%	-1.06%	3.22%	-0.54%	97.94
▲ S&P/BVL SEL (Perú)	533.56	0.11%	-0.72%	4.49%	0.38%	76.43
▼ S&P/BVL LIMA 25	26,020.10	-0.20%	0.48%	8.42%	1.03%	91.41
▲ IPC (México)	44,572.17	0.23%	0.30%	6.25%	2.37%	292.67
▲ S&P MILA 40	614.59	0.69%	-0.01%	6.29%	1.91%	259.87



Source: Bloomberg

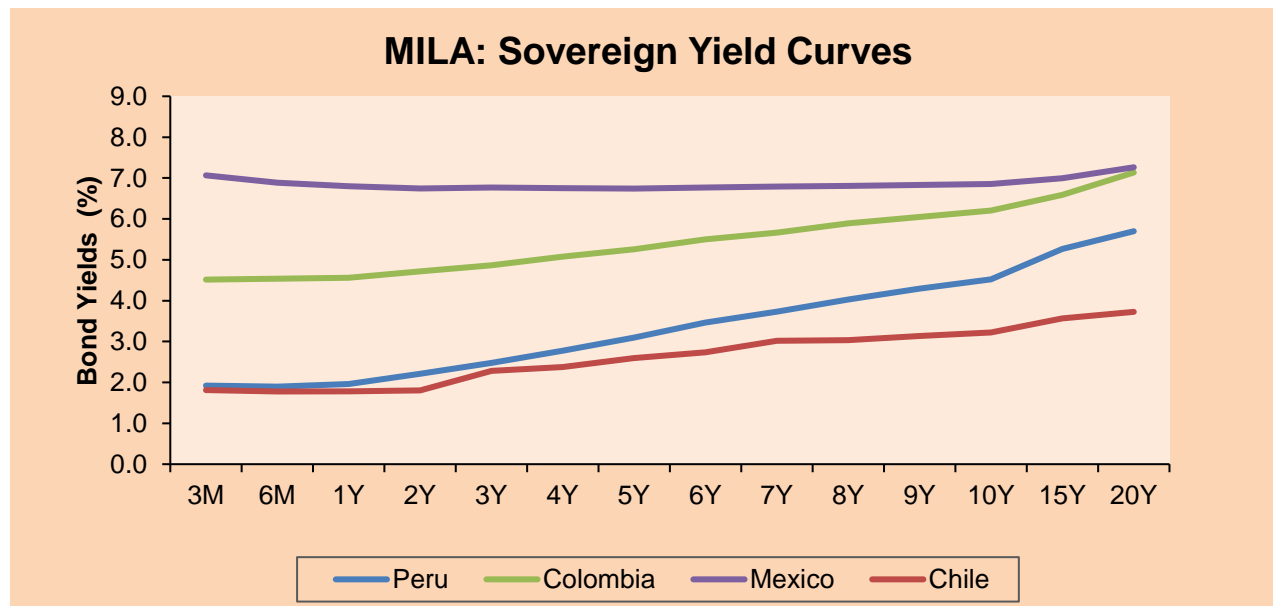
Currency	Price	1D*	5D*	30 D*	YTD*
▲ New Sol (PEN)	3.3205	0.16%	0.64%	-2.32%	0.25%
▲ Chilean Peso (CLP)	767.42	0.69%	2.21%	-1.46%	1.93%
▲ Colombian Peso (COP)	3,256.27	0.29%	0.01%	-4.40%	-0.94%
▲ Mexican Peso (MXN)	18.84	0.12%	0.00%	-2.17%	-0.46%

\*Legend: Variation 1D: 1 day; 5D: 5 days; 1M: 1 Month; YTD: Var%12/31/18 to date



Base: 10/10/19=100  
Source: Bloomberg

Fixed Income	Bid Yield (%)	Ask Yield (%)	Duration
PERU 4.125 08/25/2027	2.35	2.30	6.55
PERU 7.35 07/21/25	2.25	2.20	4.58
PERU 8.75 11/21/33	2.98	2.94	9.43
PERU 6.55 03/14/37	3.04	3.01	11.10
PERU 5.625 11/18/2050	3.25	3.22	17.57
CHILE 2.25 10/30/22	2.07	1.95	2.70
CHILE 3.875 08/05/20	2.05	1.51	0.55
CHILE 3.625 10/30/2042	3.15	3.12	15.90
COLOM 11.75 02/25/20	1.33	-0.59	0.13
COLOM 11.85 03/09/28	3.16	3.09	5.85
COLOM 10.375 01/28/33	4.26	4.16	8.26
COLOM 7.375 09/18/37	4.02	3.99	11.08
MEX 4 10/02/23	2.35	2.27	3.43
MEX 5.55 01/45	4.04	4.017	14.54



Source: Bloomberg

Equity					Largest losses				
Largest gains	Exchange	Amt.	Price	▲%	Exchange	Amt.	Price	▼%	
ETB	Colomb.	COP	274.00	5.38	BESALCO	Santia.	CLP	436.44	-2.99
ELCONDOR	Colomb.	COP	1355.00	3.83	PROMIGAS	Colomb.	COP	8000.00	-2.91
GRUPOAVAL	Colomb.	COP	1470.00	3.16	SALFACORP	Santia.	CLP	487.00	-2.84
CCU	Santia.	CLP	7497.90	1.74	BVLAC1	Lima	PEN	2.10	-2.78

Per Turnover			Per Volume		
Exchange	Amount (US\$)	Volume	Exchange	Volume	
RIPLEY	Santia.	23,638,620	BSANTANDER	Santia.	92,848,763
PFBICOLOM	Colomb.	9,984,473	CHILE	Santia.	51,558,225
BCI	Santia.	8,154,398	VAPORES	Santia.	44,768,945
	Santia.	7,362,215	RIPLEY	Santia.	43,784,640
FALABELLA	Santia.	6,924,693	COLBUN	Santia.	12,411,818

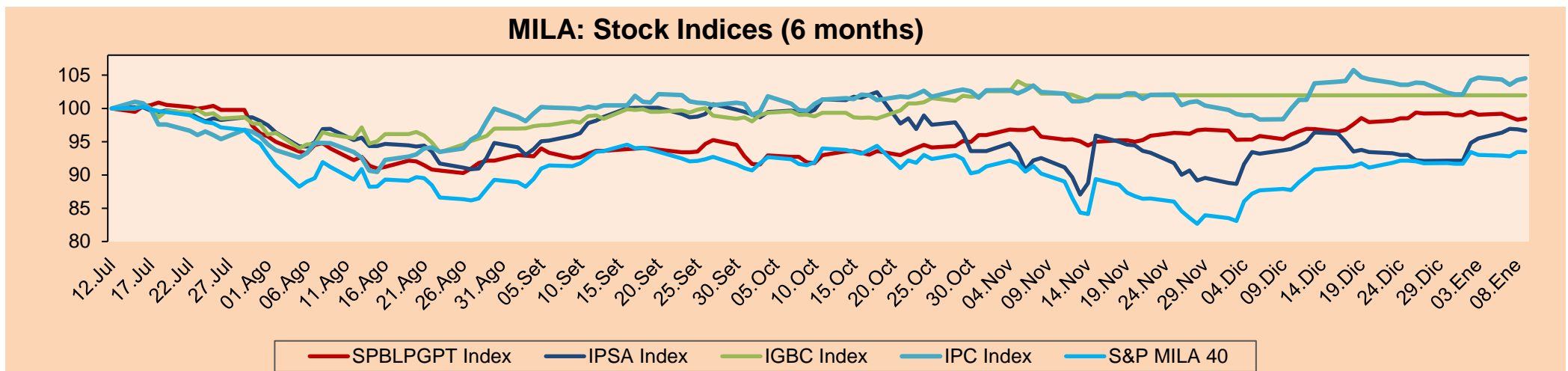
## MILA

**Peru:** The general BVL index ended today's session with a positive result of + 0.17%. The index maintains a negative trend in local currency of -0.54%, while the adjusted yield in dollars amounts to -0.61%. Then, the S&P / BVL Peru SEL varied by + 0.11%, while the S&P / BVL LIMA 25 varied by -0.20%. The affected PEN spot S / 3.3170. Headline: The increase in public and private investment will be essential for the expansion of GDP.

**Chile:** The IPSA index closed today with a negative yield of -0.23%. The sectors with the worst results were Real Estate (-1.34%) and Energy (-0.80%). On the other hand, the values that fell the most were Salfacorp SA (-2.84%) and Sociedad Química y Minera (-1.77%). Headline: The crisis in Chile reaches 3% in 2019, below market expectations

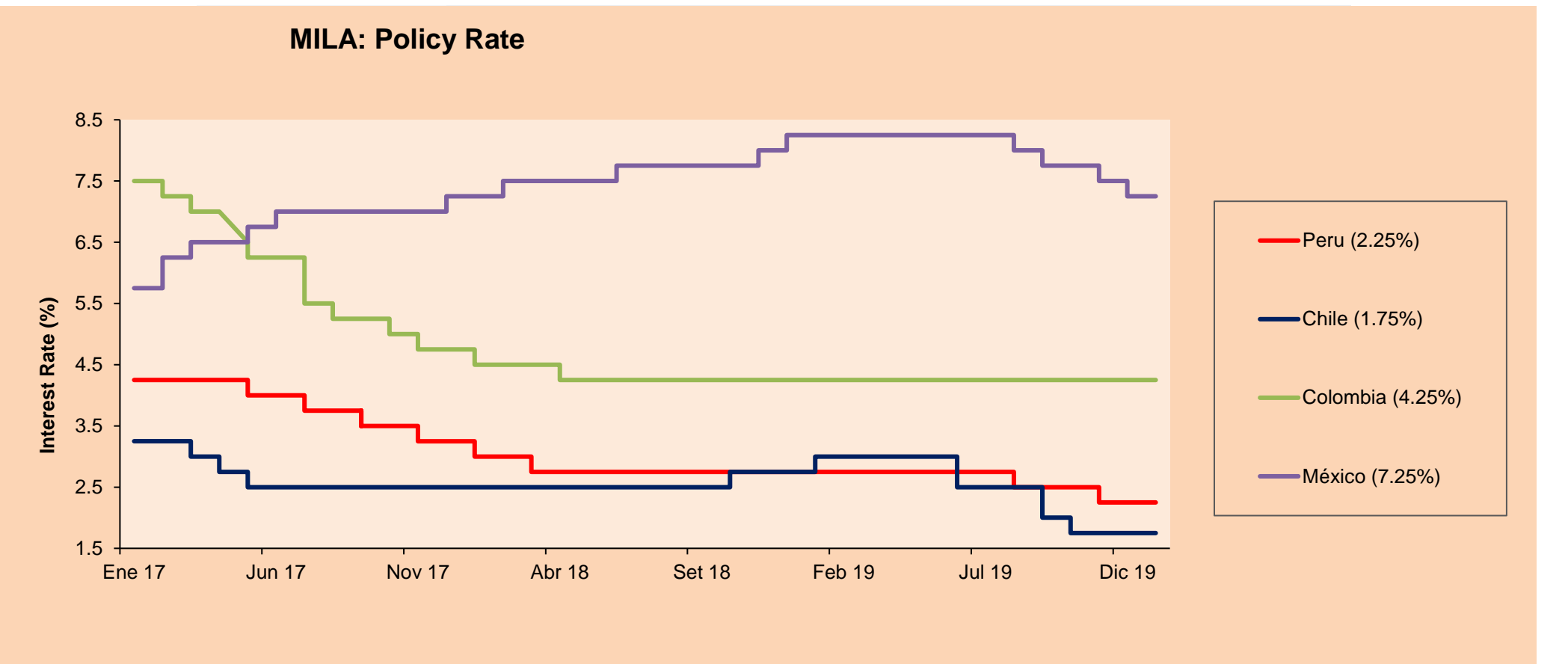
**Colombia:** The COLCAP index closed the day today with a negative return of -0.21%. The sectors with the worst results were Materials (-0.90%) and Finance (-0.64%). On the other hand, the values with the results of the producers were Promigas SA (-2.91%) and BanColombia (-2.32%). Headline: Colombia decreases the minimum wage increase of 6% to US \$ 265.5 per month by 2020.

**Mexico:** The MEXBOL index closed today with a positive yield of + 0.23%. The sectors with the best results were Finance (+ 2.07%) and Health (+ 0.43%). On the other hand, the values with the best yields were Grupo Financiero Banorte SAB (+ 3.70%) and Grupo Bimbo Sab de CV (+ 2.68%). Headline: The Government of Mexico places bonds in the international markets for US \$ 2,300M



Base: 15/07/19=100  
Source: Bloomberg

ETFs	Curr.	Close	1D	5D	30 D	YTD	Exchange
▼ iShares MSCI All Peru Caped Index Fund	USD	36.57	-0.35%	-1.80%	6.22%	-1.30%	NYSE Arca
▼ iShares MSCI All Chile Caped Index Fund	USD	34.09	-0.50%	-0.03%	4.44%	2.28%	Cboe BZX
▼ Global X MSCI Colombia	USD	13.91	-0.72%	-0.60%	6.47%	0.07%	NYSE Arca
▲ iShares MSCI Mexico Capped	USD	46.14	0.07%	-0.26%	5.22%	2.47%	NYSE Arca
▲ iShares MSCI Emerging Markets	USD	45.35	0.67%	-0.94%	5.34%	1.07%	NYSE Arca
▲ Vanguard FTSE Emerging Markets	USD	45.05	0.51%	-1.05%	5.80%	1.30%	NYSE Arca
▲ iShares Core MSCI Emerging Markets	USD	54.32	0.74%	-1.00%	5.07%	1.04%	NYSE Arca
▲ iShares JP Morgan Emerging Markets Bonds	USD	58.71	0.26%	-0.91%	2.24%	0.09%	Cboe BZX
- Morgan Stanley Emerging Markets Domestic	USD	6.97	0.00%	-0.85%	1.46%	-0.29%	New York



Source: Bloomberg

Capital Market Laboratory Coordinator: Economist Bruno Bellido Anicama  
Collaboration: Alonso Butters, Jeanpierre León y Manuel Muñoz Najar  
e-mail: pulsobursatil@ulima.edu.pe  
facebook: www.facebook.com/pulsobursatil.ul  
Phone number : 4376767 Annex: 35340

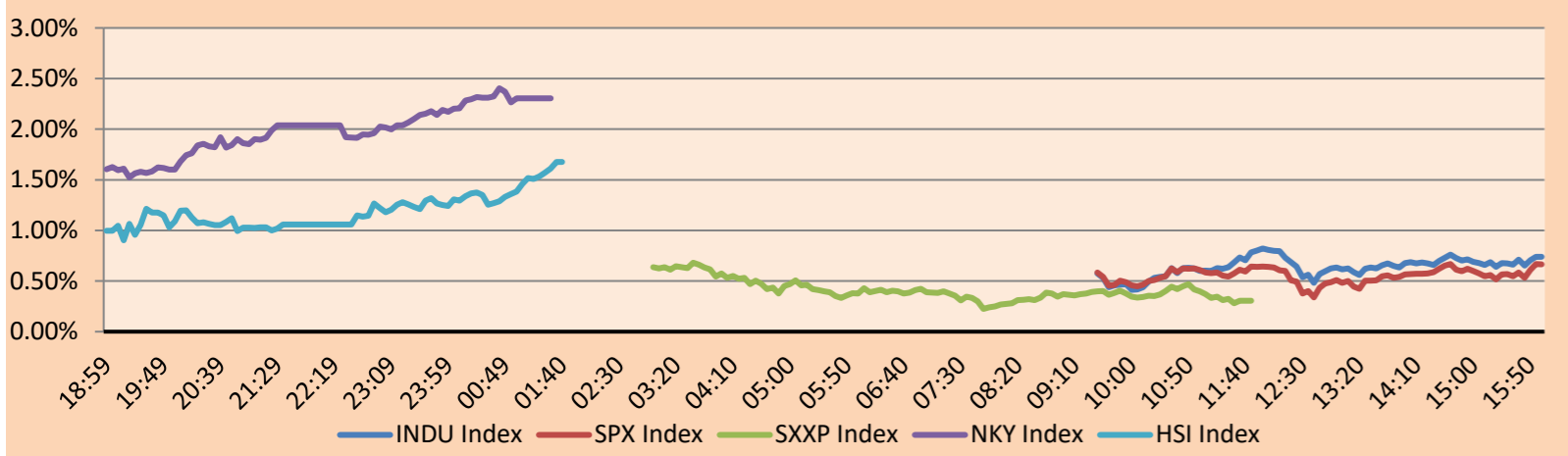
# PULSO BURSÁTIL

## WORLD

Main Indices	Close	1 D*	5 D*	1 M*	YTD*	Market Cap. (US\$ Mill.)
▲ Dow Jones (USA)	28,956.90	0.74%	0.31%	3.75%	1.47%	8,220,923
▲ Standard & Poor's 500 (USA)	3,274.70	0.67%	0.52%	4.42%	1.36%	28,056,072
▲ NASDAQ Composite (USA)	9,203.43	0.81%	1.22%	6.75%	2.57%	14,134,268
▲ Stoxx EUROPE 600 (Europe)	419.64	0.31%	-0.02%	3.26%	0.91%	10,185,679
▲ DAX (Germany)	13,495.06	1.31%	0.82%	2.97%	1.86%	1,129,956
▲ FTSE 100 (United Kingdom)	7,598.12	0.31%	-0.08%	5.03%	0.74%	1,551,667
▲ CAC 40 (France)	6,042.55	0.19%	0.02%	3.52%	1.08%	1,669,906
▼ IBEX 35 (Spain)	9,581.80	-0.10%	-1.13%	2.43%	0.34%	541,675
▼ MSCI AC Asia Pacific Index	172.12	-0.85%	-1.24%	2.64%	-0.51%	20,515,424
▲ HANG SENG (Hong Kong)	28,561.00	1.68%	0.06%	8.04%	1.32%	2,681,392
▲ SHANGHAI SE Comp. (China)	3,094.88	0.91%	0.31%	6.09%	1.47%	5,081,129
▲ NIKKEI 225 (Japan)	23,739.87	2.31%	-0.41%	1.41%	0.35%	3,554,343
▼ BOVESPA (Brazil)	115,947.10	-0.26%	-2.21%	4.48%	0.26%	897,710
▲ Merval (Argentina)	42,035.70	2.49%	2.26%	15.45%	0.87%	23,527

\*Legend: Variation 1D: 1 Day; 5D: 5 Days; 1M: 1 Month; YTD: Var.% 12/31/18 to date

Global Markets: Intraday Evolution (var %)

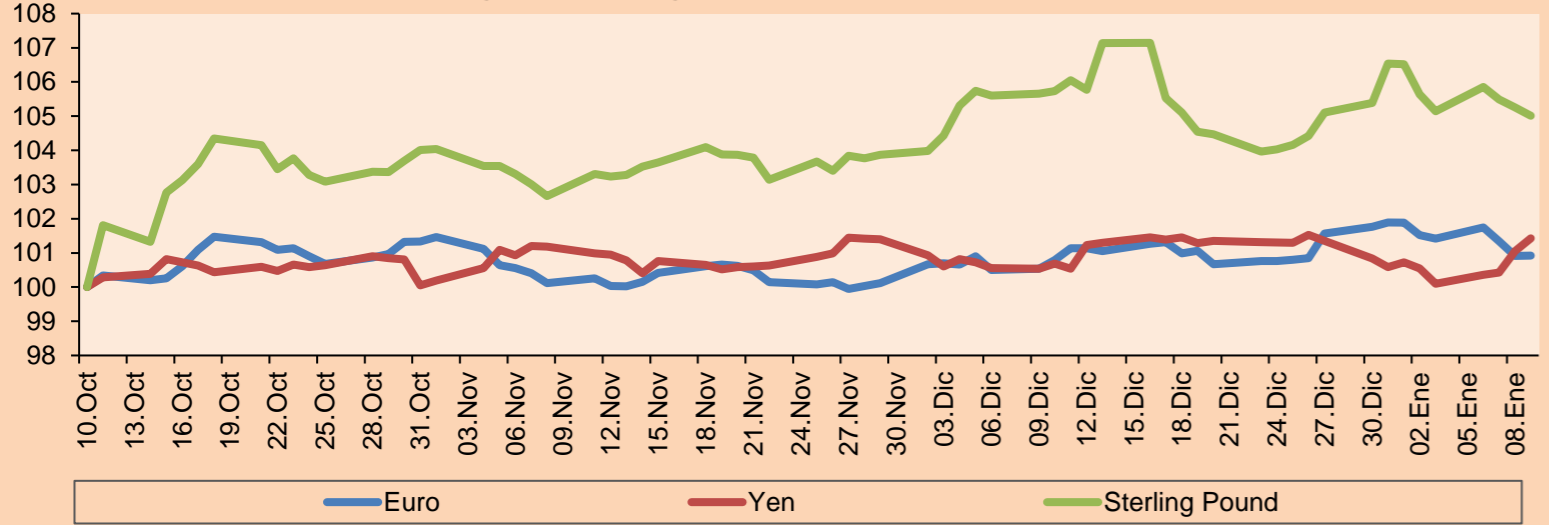


Source: Bloomberg

Currency	Price	1 D*	5 D*	1 M*	YTD*
▲ Euro	1.1106	0.01%	-0.59%	0.13%	-0.95%
▲ Yen	109.5200	0.37%	0.88%	0.74%	0.84%
▼ Sterling Pound	1.3067	-0.23%	-0.59%	-0.68%	-1.43%
▼ Yuan	6.9322	-0.20%	-0.46%	-1.45%	-0.45%
▼ Hong Kong Dollar	7.7672	-0.11%	-0.29%	-0.76%	-0.31%
▲ Brazilian Real	4.0891	0.62%	1.61%	-1.37%	1.60%
▲ Argentine Peso	59.8186	0.00%	0.00%	-0.01%	-0.09%

\*Legend: Variation 1D: 1 Day; 5D: 5 Days; 1M: 1 Month; YTD: Var.% 12/31/18 to date

Foreign Exchange Indices (3 months)

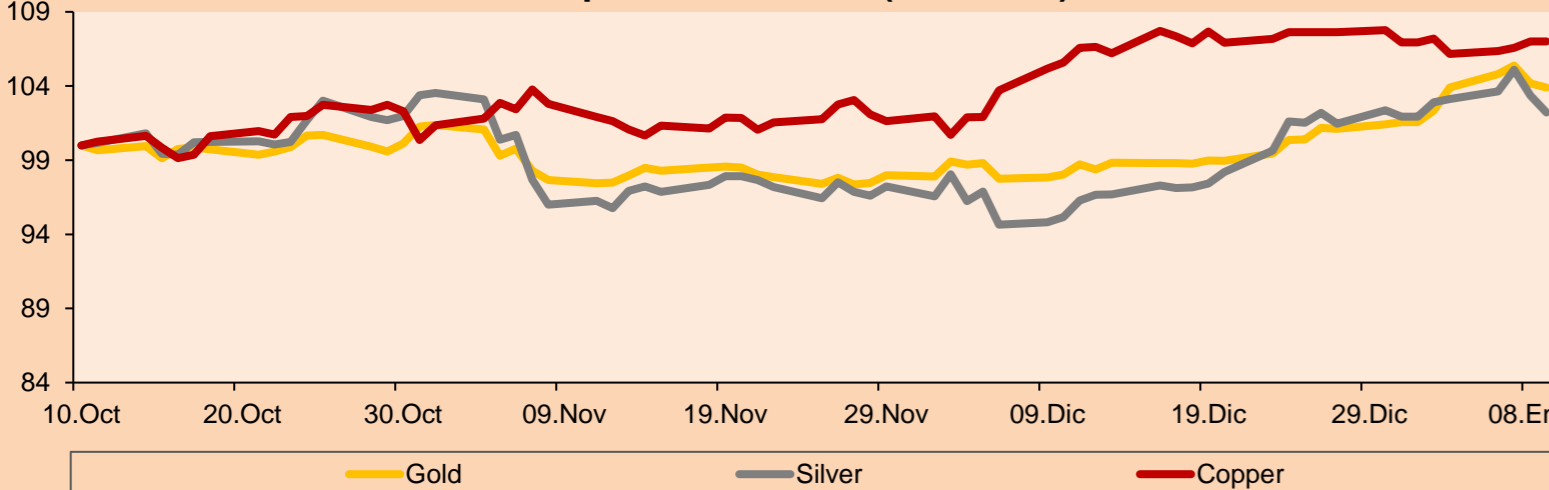


Base: 10/10/19=100  
Source: Bloomberg

Commodities	Close	1 D*	5 D*	1 M*	YTD*
▼ Oro (US\$ Oz. T) (LME)	1,552.32	-0.26%	1.52%	6.00%	2.31%
▼ Plata (US\$ Oz. T) (LME)	17.90	-1.11%	-0.67%	7.42%	0.28%
- Cobre (US\$ TM) (LME)	6,152.35	0.00%	-0.18%	1.36%	0.05%
- Zinc (US\$ TM) (LME)	2,419.00	0.00%	4.14%	8.74%	6.12%
▼ Petróleo WTI (US\$ Barril) (NYM)	59.59	-0.03%	-2.60%	0.76%	-2.41%
- Estaño (US\$ TM) (LME)	17,121.00	0.00%	-0.40%	-1.83%	-0.33%
- Plomo (US\$ TM) (LME)	1,885.25	0.00%	-1.17%	-0.40%	-1.48%
▲ Azúcar #11 (US\$ Libra) (NYB-ICE)	13.71	1.78%	4.42%	1.86%	2.16%
▲ Cacao (US\$ TM) (NYB-ICE)	2,554.00	2.12%	0.87%	-1.20%	0.55%
▼ Café Arábica (US\$ TM) (NYB-ICE)	117.35	-1.51%	-7.67%	-11.97%	-9.52%

\*Leyenda: Variación 1D: 1 Día; 5D: 5 Días; 1M: 1 Mes; YTD: Var.% 31/12/17 a la fecha

Principal Metals Index (3 months)



Base: 10/10/19=100  
Source: Bloomberg

## Equity

Alemania (Acciones del DAX Index)

Largest gains	Curr.	Price	▲ %	Exchange	Largest losses	Curr.	Price	▼ %	Exchange
MTX GY	EUR	270.3	2.78	Xetra	HEI GY	EUR	65.4	-0.55	Xetra
VOW3 GY	EUR	181.72	2.77	Xetra	BMW GY	EUR	74.36	-0.07	Xetra
CON GY	EUR	120.12	2.37	Xetra	VNA GY	EUR	49.1	0.27	Xetra
ADS GY	EUR	310	2.36	Xetra	EOAN GY	EUR	9.459	0.30	Xetra

Europe (Stocks from STOXX EUROPE 600)

Largest gains	Curr.	Price	▲ %	Exchange	Largest losses	Curr.	Price	▼ %	Exchange
ARGX BB	EUR	150.7	6.28	EN Brussels	SW FP	EUR	100.5	-6.29	EN Paris
BAMI IM	EUR	2.087	5.43	Borsa Italiana	TLW LN	GBp	54.8	-5.06	Londres
MOR GY	EUR	135.3	4.80	Xetra	CINE LN	GBp	200.7	-4.52	Londres
AF FP	EUR	9.82	4.03	EN Paris	IPN FP	EUR	78.6	-4.50	EN Paris

## Global Overview:

### United States:

US markets ended today's session on the rise, amid lower tensions between the US and Iran, which allowed the main indexes to reach record levels. The current situation seems to have calmed down and is expected not to escalate to higher levels. This caused the shares to change course and return to their uptrend. In addition, it allowed investors to focus on solid employment data, since the Department of Labor announced that weekly unemployment applications decreased by 9,000, currently 214,000. Likewise, the signing of the "Phase One" trade agreement between the US and China next week increased optimism on Wall Street. This better panorama will be maintained only if there is no new negative event between US and Iran, making the actions continue in record territory. In corporate shares, Apple rose 2.12%, reaching a new all-time high. Also, Goldman Sachs and AMD increased by 2.04% and 2.38%, respectively, after better standards by analysts. In this way, S&P 500 + 0.67%, Dow Jones Industrial + 0.74% and NASDAQ Composite + 0.81%.

### Europe:

European markets closed today with a positive variation of its index, Stoxx (+ 0.71%). Among the sectors with the best variations were information technology (+ 1.38%), health (+ 1.20%) and non-basic consumer products (+ 1.12%). On the other hand, Boris Johnson is preparing to achieve an event that seemed impossible. After years of divisions, British deputies must approve this Thursday in a historic vote, the agreement to remove the United Kingdom from the European Union on January 31. This event is due to the overwhelming majority that the conservative leader (Boris Johnson) in the December legislative elections, the bill that translates the divorce agreement with Brussels into British law must be approved without difficulty. "Achieving the adoption of legislation in the House of Commons will be a significant step," said the Johnson spokesman. "We will have fulfilled the prime minister's commitment to make Brexit," he added. On January 31, after three and a half years after the 2016 referendum, which had 52% of Britons who voted for Brexit. The United Kingdom will end after 47 years of a complicated relationship with the EU. The block will lose a member country and win a powerful commercial competitor.

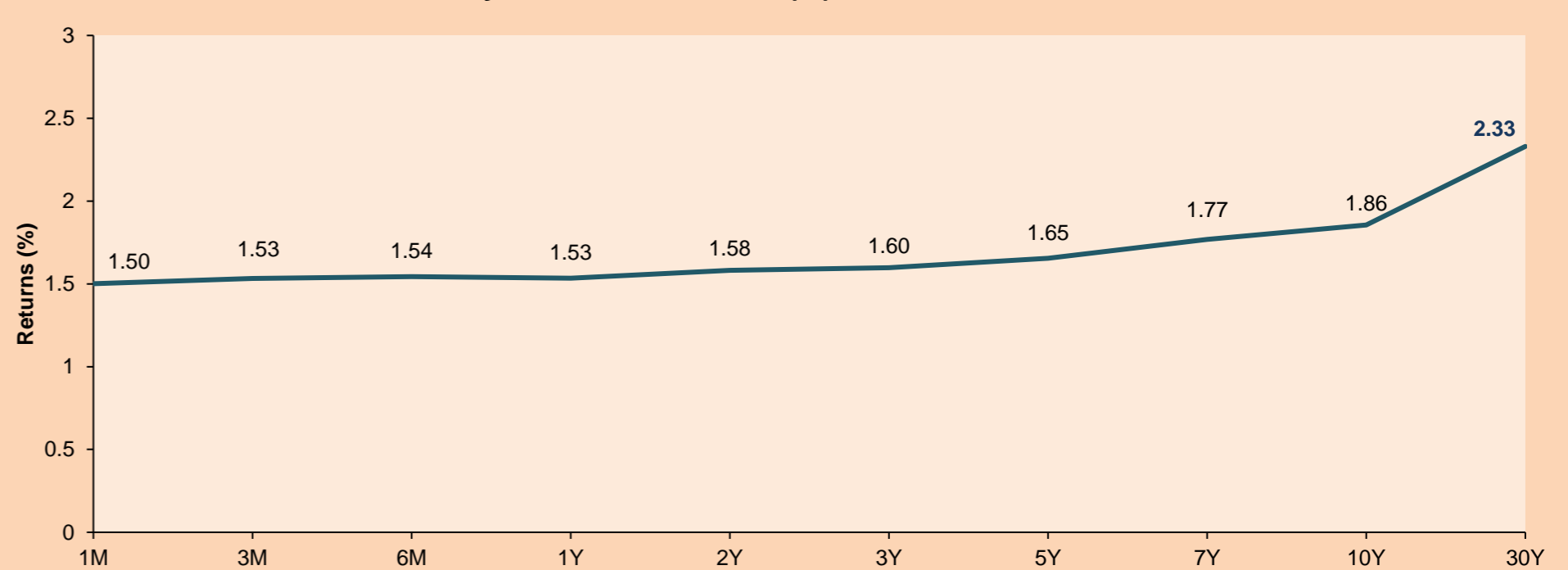
### Asia:

Asian markets closed today with positive variations in their main indexes. The Nikkei 225 index (+ 2.31%), Hang Seng (+ 1.68%), S & P / ASX200 (+ 0.83%), Nifty (+ 1.58%) and IDX Composite (+ 0.78%). On the other hand, Chinese Vice Premier Liu He will travel to Washington from January 13 to 15 to sign the preliminary agreement between the economic potentials, China and the US. "In response to the invitation from the US, Liu He, head of the Chinese side in the economic negotiations, will lead the delegation that will visit Washington between the 13th and 15th of this month to sign the first phase of the trade agreement with the US", Gao Feng, spokesman for the Ministry of Commerce reported in a press conference. What will establish a truce in the trade war between China and the United States, which confirmed the Chinese Minister of Commerce. US President Donald Trump announced on December 31 of last year that on January 15, the partial agreement concluded with China will be signed at the White House. This agreement includes advances in technology transfer for foreign companies established in China. In addition, it is stipulated that China will acquire US agricultural products for an amount of USD 200,000 million for two years. In exchange for this disbursement, the US government renounces to impose new tariffs on Chinese products.

## ETFs

	Curr.	Close	1D	5D	30 D	YTD	Exchange
SPDR S&P 500 ETF TRUST	USD	326.65	0.68%	0.55%	4.18%	1.49%	NYSE Arca
ISHARES MSCI EMERGING MARKET	USD	45.35	0.67%	-0.94%	5.34%	1.07%	NYSE Arca
ISHARES IBOXX HIGH YLD CORP	USD	88.36	0.26%	0.06%	1.40%	0.48%	NYSE Arca
FINANCIAL SELECT SECTOR SPDR	USD	30.92	0.62%	-0.51%	2.05%	0.45%	NYSE Arca
VANECK GOLD MINERS	USD	28.04	-1.09%	-4.46%	3.35%	-4.23%	NYSE Arca
ISHARES RUSSELL 2000 ETF	USD	165.51	0.12%	-0.16%	1.78%	-0.10%	NYSE Arca
SPDR GOLD SHARES	USD	146.03	-0.57%	1.44%	5.84%	2.19%	NYSE Arca
ISHARES 20+ YEAR TREASURY BO	USD	137.22	0.35%	0.15%	-1.04%	1.28%	NASDAQ GM
INVECO QQQ TRUST SERIES 1	USD	218.99	0.85%	1.31%	7.40%	3.00%	NASDAQ GM
ISHARES NASDAQ BIOTECHNOLOGY	USD	121.04	0.68%	0.96%	0.78%	0.44%	NASDAQ GM
ENERGY SELECT SECTOR SPDR	USD	60.15	0.74%	-0.71%	0.64%	0.18%	NYSE Arca
PROSHARES ULTRA VIX ST FUTUR	USD	11.68	-5.58%	-3.71%	-28.21%	-9.39%	NYSE Arca
UNITED STATES OIL FUND LP	USD	12.49	-1.34%	-2.50%	0.81%	-2.50%	NYSE Arca
ISHARES MSCI BRAZIL ETF	USD	46.65	-0.77%	-3.64%	5.04%	-1.69%	NYSE Arca
SPDR S&P OIL & GAS EXP & PR	USD	23.44	-0.47%	-0.93%	8.92%	-1.10%	NYSE Arca
UTILITIES SELECT SECTOR SPDR	USD	64.23	0.55%	0.66%	1.98%	-0.60%	NYSE Arca
ISHARES US REAL ESTATE ETF	USD	92.12	0.05%	0.08%	-0.53%	-1.03%	NYSE Arca
SPDR S&P BIOTECH ETF	USD	95.82	0.22%	1.20%	0.30%	0.75%	NYSE Arca
ISHARES IBOXX INVESTMENT GRA	USD	128.34	0.48%	0.09%	0.54%	0.30%	NYSE Arca
ISHARES JP MORGAN USD EMERGI	USD	114.58	-0.07%	-0.10%	1.76%	0.02%	NASDAQ GM
REAL ESTATE SELECT SECT SPDR	USD	38.27	-0.03%	0.13%	-0.08%	-1.03%	NYSE Arca
ISHARES CHINA LARGE-CAP ETF	USD	44.38	0.91%	-1.11%	7.69%	1.72%	NYSE Arca
CONSUMER STAPLES SPDR	USD	62.70	0.71%	0.35%	0.29%	-0.44%	NYSE Arca
VANECK JR GOLD MINERS	USD	40.23	-1.49%	-5.10%	5.15%	-4.80%	NYSE Arca
SPDR BBG BARC HIGH YIELD BND	USD	110.09	0.23%	0.10%	1.41%	0.50%	NYSE Arca
VANGUARD REAL ESTATE ETF	USD	91.58	-0.05%	-0.13%	-1.01%	-1.30%	NYSE Arca
GRAYSCALE BITCOIN TRUST BTC	USD	9.30	-0.23%	16.54%	7.51%	13.55%	OTC US

USA Treasury Bonds Yield Curve (%)



Source: Bloomberg

Capital Market Laboratory Coordinator: Economist Bruno Bellido Anicama  
 Collaboration: Alonso Butters, Jeanpierre León y Manuel Muñoz Najar  
 e-mail: pulsobursatil@ulima.edu.pe  
 facebook: www.facebook.com/pulsobursatil.ul  
 Phone number: 4376767 Annex: 35340

# PULSO BURSÁTIL

## LIMA

### Stocks

Ticker	Currency	Price	1D*	5D*	30D*	YTD*	Frequency	Volume (US\$)	Beta	Dividend Yield (%)	Price Earning	Market Cap. (M US\$)	Economic Sector*	Index Weight
▼ ALICORC1 PE**	S/.	9.00	-0.88%	-2.07%	0.56%	-2.17%	100.00%	1,420,301	0.73	2.67	17.30	2,310.72	Industrial	3.53%
▼ ATACOCB1 PE**	S/.	0.18	-2.20%	4.71%	34.85%	7.88%	100.00%	8,131	#N/A N/A	0.00	-	50.65	Mining	1.02%
▲ BACKUS1 PE**	S/.	30.30	0.80%	5.94%	10.91%	6.32%	66.67%	3,194	0.33	4.91	8.94	12,321.09	Industrial	0.82%
▲ BAP PE**	US\$	211.90	0.55%	-3.24%	4.13%	-0.37%	94.44%	15,844	1.29	3.96	-	16,901.46	Diverse	5.82%
▼ BVN PE**	US\$	14.13	-0.49%	-5.48%	-4.40%	-7.65%	83.33%	175,940	1.31	0.59	-	3,894.72	Mining	5.88%
- CASAGRC1 PE**	S/.	3.00	0.00%	-0.99%	11.11%	-0.99%	100.00%	6,887	0.66	0.42	17.61	76.10	Agricultural	1.31%
- BBVAC1 PE**	S/.	3.45	0.00%	0.00%	1.47%	0.58%	100.00%	179,555	0.50	4.00	12.66	6,114.73	Finance	2.85%
- CORAREI1 PE**	S/.	0.89	0.00%	-1.11%	2.30%	-2.20%	100.00%	15,814	0.87	7.39	4.33	365.88	Industrial	1.72%
- CPACASC1 PE**	S/.	6.05	0.00%	-1.63%	0.00%	-1.63%	94.44%	100,223	0.68	5.95	33.61	780.02	Industrial	2.38%
- CVERDEC1 PE**	US\$	19.50	0.00%	1.04%	7.14%	1.04%	88.89%	344,370	1.00	2.20	-	6,826.09	Mining	5.25%
- ENGEPEC1 PE**	S/.	2.30	0.00%	0.00%	-0.86%	0.00%	44.44%	16,039	0.54	3.88	12.51	1,966.31	Public Services	1.44%
- ENDISPC1**	S/.	7.15	0.00%	-0.69%	3.92%	-2.72%	44.44%	1,184	0.49	0.00	11.21	1,375.01	Public Services	0.98%
- FERREYC1 PE**	S/.	2.12	0.00%	-2.75%	2.91%	-3.20%	100.00%	104,414	0.92	4.83	7.96	622.93	Diverse	4.90%
- GRAMONC1 PE**	S/.	1.70	0.00%	0.59%	13.33%	0.00%	94.44%	161,016	1.02	0.00	-	446.40	Diverse	4.05%
▼ IFS PE**	US\$	41.20	-0.77%	-2.74%	5.24%	0.73%	88.89%	222,130	0.94	4.25	11.89	4,756.45	Diverse	7.22%
▲ INRETC1 PE**	US\$	39.30	0.77%	4.80%	11.97%	9.17%	94.44%	5,405,930	0.70	0.87	31.76	4,040.33	Diverse	5.28%
- LUSURC1 PE**	S/.	26.00	0.00%	0.97%	10.17%	0.97%	100.00%	3,524	0.73	4.62	20.81	3,812.90	Public Services	1.81%
▲ MINSURI1 PE**	S/.	1.57	1.29%	0.64%	8.28%	0.64%	50.00%	4,174	1.08	4.82	6.92	1,363.14	Mining	3.09%
- PML PE**	US\$	0.07	0.00%	9.09%	-4.00%	28.57%	61.11%	796	1.18	0.00	-	19.00	Mining	2.12%
▼ RELAPAC1 PE**	S/.	0.12	-1.65%	-1.65%	21.43%	-3.25%	100.00%	17,316	0.88	0.00	-	298.14	Industrial	2.12%
▲ SCCO PE**	US\$	42.02	0.36%	-1.18%	6.19%	-0.97%	94.44%	72,210	1.29	4.87	22.12	32,483.93	Mining	2.14%
▼ SIDERC1 PE**	S/.	0.89	-1.11%	2.30%	30.88%	0.00%	100.00%	24,763	1.40	11.47	10.11	329.12	Industrial	1.43%
- TV PE**	US\$	0.18	0.00%	1.12%	22.45%	4.05%	83.33%	14,867	1.97	0.00	-	146.54	Mining	2.93%
▼ UNACEMC1 PE**	S/.	1.98	-1.00%	-1.00%	-1.00%	-1.00%	88.89%	101,169	0.69	2.63	10.06	1,084.14	Industrial	3.00%
▼ VOLCABC1 PE**	S/.	0.50	-1.96%	12.11%	28.21%	12.36%	100.00%	85,633	1.46	0.00	-	2,084.68	Mining	5.90%
- NEXAPEC1 PE**	S/.	3.45	0.00%	0.00%	9.52%	0.00%	55.56%	1,764	0.89	15.04	33.58	1,373.90	Mining	1.56%

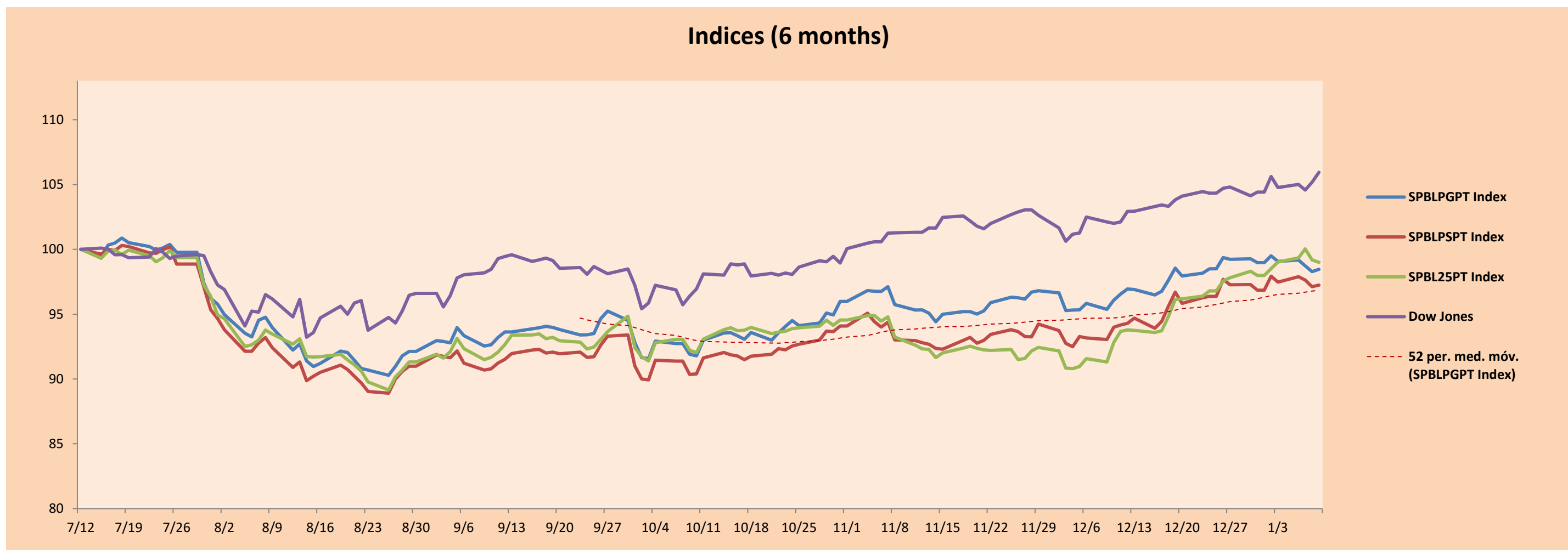
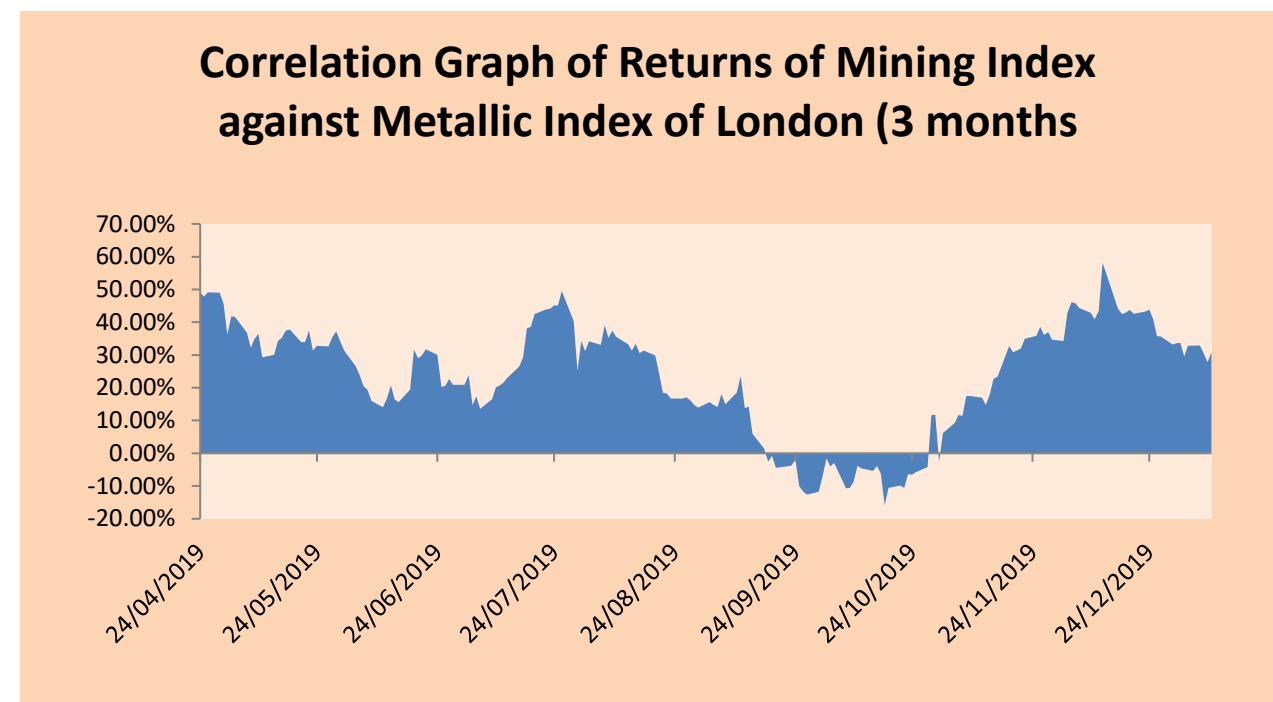
Quantity of shares: 26  
 Source: Bloomberg, Economática  
 \* Bloomberg Industry Classification System  
 \*\* PER is used in the stock market and original currency of the instrument  
 \*Legend: Variation 1D: 1 Day; 5D: 5 Days, 1M: 1 Month; YTD: Var.% 12/31/18 to date

Up 5  
 Down 8  
 Hold 13

### Sectorial Indices

	Close	1D*	5D*	30D*	YTD*	Beta
▲ Mining Index	296.51	0.06%	-1.56%	0.81%	-2.68%	1.31
▲ Consumer Index	1,186.76	0.21%	2.53%	6.08%	4.08%	0.44
▼ Industrial Index	207.60	-0.29%	-1.19%	3.27%	-1.67%	0.65
▲ Banking and Financial Index	1,178.96	0.58%	-2.50%	1.83%	-0.06%	1.27
▼ Construction Index	224.45	-0.39%	-0.49%	3.17%	-0.96%	0.53
▲ Services Index	654.95	0.36%	0.82%	5.51%	0.53%	0.30
▼ Juniors Index	15.22	-0.98%	0.20%	-3.61%	5.18%	0.12
▲ Electric Index	639.39	0.36%	0.82%	5.51%	0.53%	0.30

\*Legend: Variation 1D: 1 Day; 5D: 5 Days, 1M: 1 Month; YTD: Var.% 12/31/18 to date



Source: Bloomberg

Capital Market Laboratory Coordinator: Economist Bruno Bellido Anicama  
 Collaboration: Alonso Butter, Jeanpere León y Manuel Muñoz Najar  
 e-mail: pulsobursatil@ulima.edu.pe  
 facebook: www.facebook.com/pulsobursatil.ul  
 Phone number : 4376767 Annex: 35340

# PULSO BURSÁTIL

## SOVEREIGN RATING

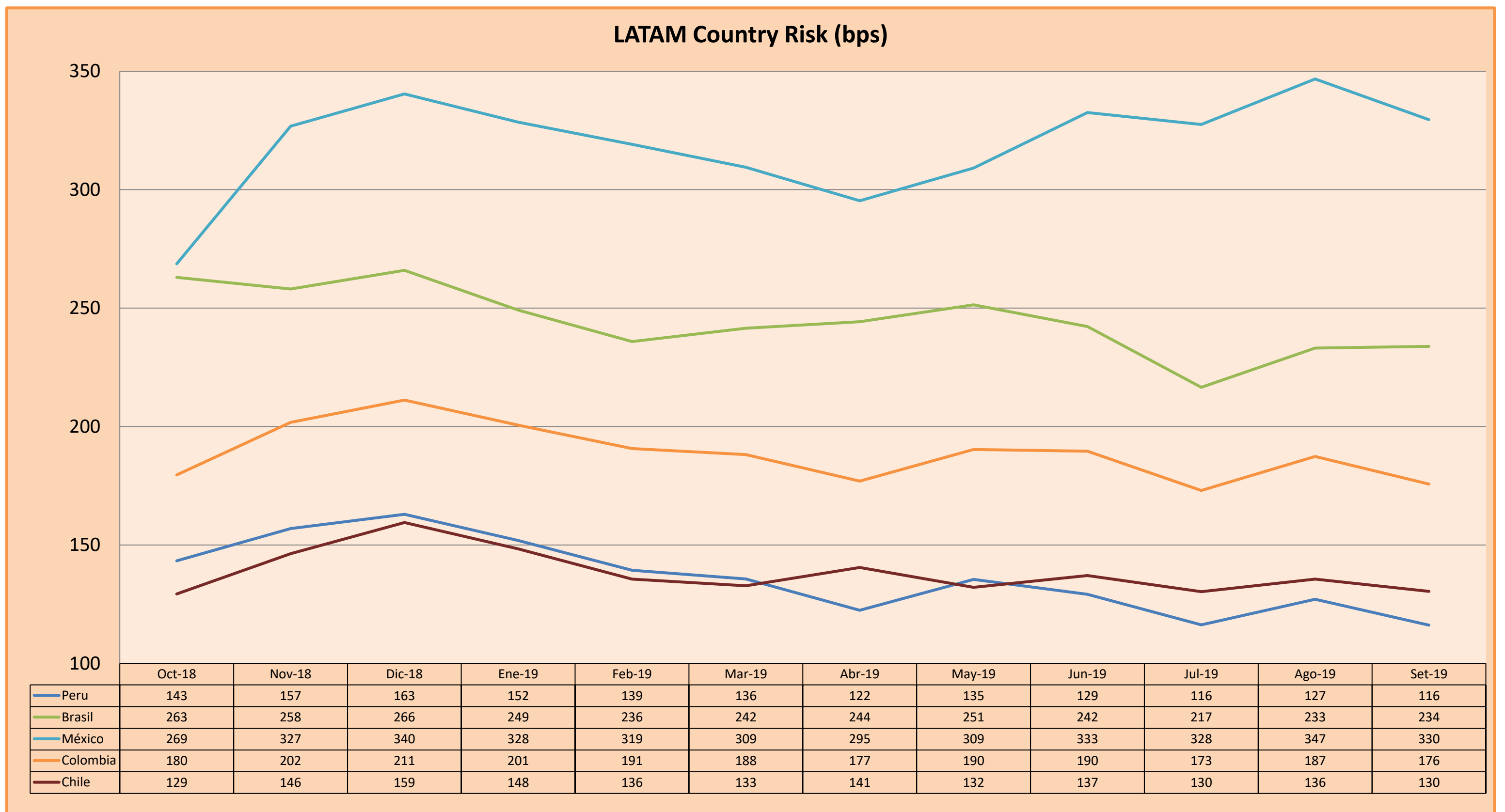
### RISK RATINGS

Moody's	S&P	Fitch	
Aaa	AAA	AAA	Prime
Aa1	AA+	AA+	High credit quality
Aa2	AA	AA	
Aa3	AA-	AA-	
A1	A+	A+	Medium-high grade, with low credit risk
A2	A	A	
A3	A-	A-	
Baa1	BBB+	BBB+	Moderate Credit Risk
Baa2	BBB	BBB	
Baa3	BBB-	BBB-	
Ba1	BB+	BB+	It has speculative elements and it is subject to substantial credit risk
Ba2	BB	BB	
Ba3	BB-	BB-	
B1	B+	B+	It is considered speculative and it has high credit risk
B2	B	B	
B3	B-	B-	
Caa1	CCC+	CCC	
Caa2	CCC	CCC	
Caa3	CCC-	CCC	
Ca	CC	CC	Very close to default or in default
	C	CC	
C	D	DD	

Source: Bloomberg

Latin America Credit Rating			
Clasificadora de riesgo			
Country	Moody's	Fitch	S&P
Peru	A3	BBB+	BBB+
Mexico	A3	BBB	BBB+
Venezuela	C	WD	SD
Brazil	Ba2	BB-	BB-
Colombia	Baa2	BBB	BBB-
Chile	A1	A	A+
Argentine	Caa2 *-	CC	CCC-
Panama	Baa1	BBB	BBB+

Source: Bloomberg



Source: BCRP

Capital Market Laboratory Coordinator: Economist Bruno Bellido Anicama  
 Support: Alonso Butters, Jeanpiere León y Manuel Muñoz Najar  
 e-mail: [pulsobursatil@ulima.edu.pe](mailto:pulsobursatil@ulima.edu.pe)  
 facebook: [www.facebook.com/pulsobursatil.ul](https://www.facebook.com/pulsobursatil.ul)  
 Phone number : 4376767 Annex: 35340