



PULSO BURSÁTIL

Lima, January 14, 2020

MILA

Main Indexes	Close	1 D	5 D	1 M	YTD	Cap. Burs. (US\$ bill)
▼ IPISA (Chile)	4,922.18	-0.74%	0.18%	0.76%	5.40%	131.40
▼ IGPA (Chile)	24,565.22	-0.63%	0.27%	0.88%	5.01%	167.97
▼ COLSC (Colombia)	996.74	-0.58%	0.93%	4.35%	1.91%	7.01
▲ COLCAP (Colombia)	1,653.18	0.08%	-0.64%	1.37%	-0.56%	108.99
▲ S&P/BVL (Perú)*	20,489.66	0.07%	0.07%	1.96%	-0.18%	100.29
▲ S&P/BVL SEL (Perú)	533.17	0.36%	-0.47%	2.61%	0.33%	78.04
▲ S&P/BVL LIMA 25	26,197.21	0.41%	-0.36%	6.32%	1.73%	93.38
▲ IPC (México)	44,773.24	-0.17%	1.39%	1.17%	2.83%	296.43
▼ S&P MILA 40	609.80	-0.34%	-0.09%	2.10%	1.12%	260.45

Equity

Largest gains	Exchange	Amt.	Price	▲ %	Largest losses	Exchange	Amt.	Price	▼ %
ENKA	Colomb.	COP	10.50	5.95	GOLF	Santia.	CLP	1800000.00	-5.26
ENTEL	Santia.	CLP	5918.00	5.68	Fabricato	Colomb.	COP	5.25	-4.55
BVLAC1	Lima	PEN	2.18	3.81	ATACOCB1	Lima	PEN	0.17	-4.52
SQM-B	Santia.	CLP	24048.00	3.67	PML	Lima	USD	0.07	-4.41

Per Turnover

	Exchange	Amount (US\$)
SQM-B	Santia.	17,441,780
ECOPETROL	Colomb.	10,700,647
BSANTANDER	Santia.	9,627,731
	Santia.	7,489,855
FALABELLA	Santia.	7,301,250

Per Volume

	Exchange	Volume
BSANTANDER	Santia.	165,739,147
VAPORES	Santia.	86,573,519
ORO BLANCO	Santia.	71,398,100
CHILE	Santia.	67,602,091
NORTEGRAN	Santia.	28,045,850

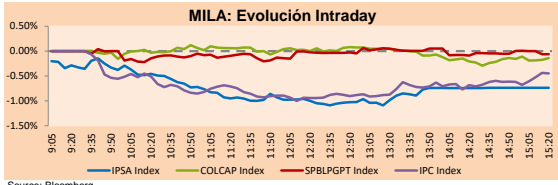
MILA

Peru: The General Index of the BVL ended today's session with a positive result of + 0.07%. The index maintains a cumulative annual negative trend of -0.18% in local currency, while the adjusted yield in dollars amounts to -0.73%. Then, the S&P / BVL Peru SEL increased by 0.39% while the S&P / BVL LIMA 25 by + 0.41%. The PEN spot reached \$ / 3.3200. Headline: Ministry of Economy and Finance and municipalities aim to achieve 85% of budget execution by the end of 2020.

Chile: The IPSA index ended the day with a negative return -0.74%. The sectors most affected in the day were Non-basic consumer products (-2.42%) and Finance (-2.28%). The actions with the worst performance were Banco Santander Chile (-3.58%) and Corbanca (-3.22%). Headline: Tourism contracted 25% in October and November: Santiago and Valparaíso, the most affected areas

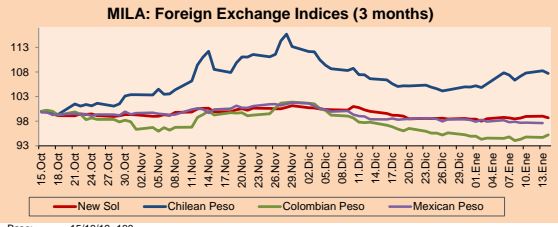
Colombia: The Colombian market had a negative result today of -0.17%. The sectors most affected in the day were Energy (-1.14%) and Public Services (-1.14%). The values with the lowest results were Promigas SA (-3.39%) and Cementos Argos SA (-2.59%). Headline: Tax collection grew 9.3% last year

Mexico: The MEXBOL index closed the session with a negative result of -0.17%. The sectors most affected in the day were Health (-0.81%) and Products of first necessity (-0.43%). The actions with the worst performance were Fomento Economía Mexicano SAB (1.73%) and Alfa SAB de CV (-1.68%). Headline: Mexico starts the design of the energy transition program to reach the goal of 35% clean energy.

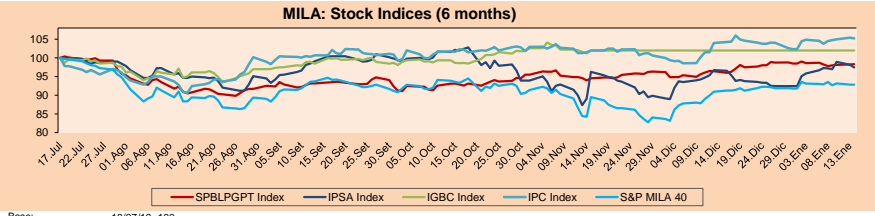
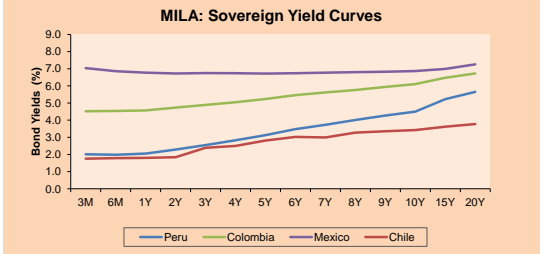


Currency	Price	1D*	5D*	30 D*	YTD*
▼ New Sol (PEN)	3,3234	-0.30%	0.05%	-1.28%	0.34%
▼ Chilean Peso (CLP)	771.38	-0.51%	0.30%	1.00%	2.61%
▲ Colombian Peso (COP)	3,286.52	0.52%	0.41%	-2.65%	0.29%
▼ Mexican Peso (MXN)	18.79	-0.04%	-0.56%	-1.31%	-0.72%

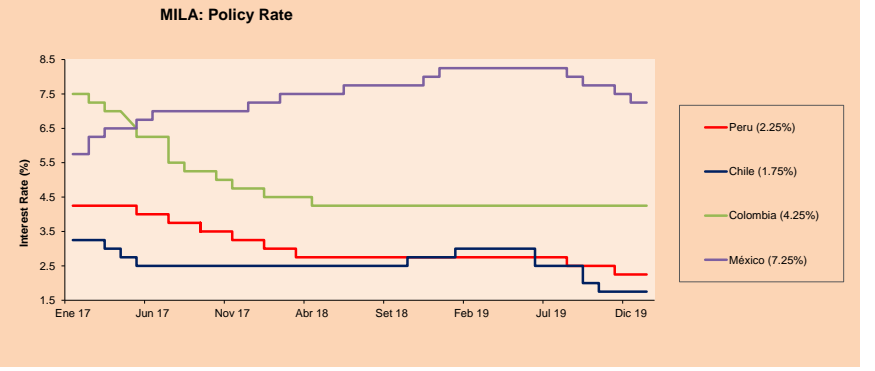
*Legend: Variation 1D: 1 day; 5D: 5 days; 1M: 1 Month; YTD: Var%12/31/18 to date



Fixed Income	Bid Yield (%)	Ask Yield (%)	Duration	
PERU 4.125 08/25/2027	USD 112,547	2.34	2.29	6.53
PERU 7.35 07/21/25	USD 126,506	2.25	2.19	4.57
PERU 8.75 11/21/33	USD 165,62	2.96	2.93	9.41
PERU 6.55 03/14/37	USD 147,113	3.03	3.00	11.08
PERU 5.625 11/18/2050	USD 146,835	3.23	3.21	17.54
CHILE 2.25 10/30/22	USD 100,778	2.02	1.91	2.68
CHILE 3.875 08/05/20	USD 101,107	2.11	1.59	0.54
CHILE 3.625 10/30/2042	USD 107,993	3.15	3.12	15.86
COLOM 11.75 02/25/20	USD 101,318	0.64	-1.41	0.11
COLOM 11.85 03/09/28	USD 162,191	3.17	3.10	5.83
COLOM 10.375 01/28/33	USD 161,889	4.22	4.12	8.25
COLOM 7.375 09/18/37	USD 142,593	4.01	3.98	11.08
MEX 4 10/02/23	USD 105,889	2.38	2.29	3.42
MEX5.55 01/45	USD 123,585	4.045	4.04	14.52



ETFs	Curr.	Close	1D	5D	30 D	YTD	Exchange
▲ iShares MSCI All Peru Caped Index Fund	USD	36.64	0.30%	-0.52%	4.09%	-1.11%	NYSE Arca
▲ iShares MSCI All Chile Caped Index Fund	USD	34.14	-0.58%	0.16%	0.59%	2.43%	Cboe BZX
▼ Global X MSCI Colombia	USD	13.84	-0.36%	-1.18%	3.31%	-0.43%	NYSE Arca
▲ iShares MSCI Mexico Capped	USD	46.42	-0.62%	1.58%	1.46%	3.09%	NYSE Arca
▼ iShares MSCI Emerging Markets	USD	46.04	-0.56%	2.79%	3.65%	2.61%	NYSE Arca
▼ Vanguard FTSE Emerging Markets	USD	45.68	-0.46%	2.38%	4.55%	2.72%	NYSE Arca
▲ iShares Core MSCI Emerging Markets	USD	55.15	-0.52%	2.70%	3.41%	2.59%	NYSE Arca
▼ iShares JP Morgan Emerging Markets Bonds	USD	59.43	-0.18%	1.78%	1.68%	1.31%	Cboe BZX
- Morgan Stanley Emerging Markets Domestic	USD	7.01	0.00%	-0.43%	0.14%	0.29%	New York



Capital Market Laboratory Codinator: Economist Bruno Bellido Anicama
Collaboration: Alonso Butters, Jeanpiere León y Manuel Muñoz Najar
e-mail: pulsobursatil@ulima.edu.pe
facebook: www.facebook.com/pulsobursatil.ul
Phone number : 4376767 Annex: 35340

The content of this document is just for informational purposes. The information and opinions expressed should not be considered as recommendations for future decisions. Under any circumstances, the Capital Market Laboratory of University of Lima will be responsible for the use of the statements in this document.

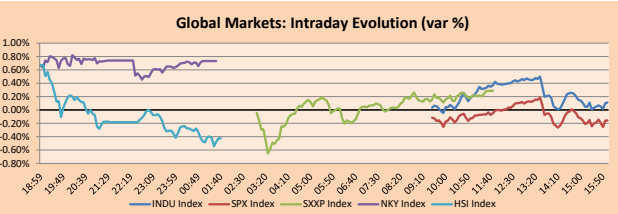


PULSO BURSÁTIL

WORLD

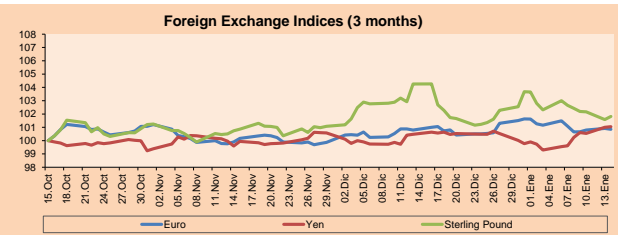
Main Indices	Close	1 D*	5 D*	1 M*	YTD*	Market Cap. (US\$ Mill.)
▲ Dow Jones (USA)	996.74	0.11%	1.25%	2.86%	1.41%	8,326,754
▼ Standard & Poor's 500 (USA)	3283.15	-0.0057952	0.0142007	0.036086	0.0162097	28,361,133
▼ NASDAQ Composite (USA)	9,251.33	-0.24%	2.02%	5.91%	3.11%	14,358,233
▲ Stoxx EUROPE 600 (Europe)	419.59	0.29%	0.46%	1.84%	0.90%	10,142,240
▲ DAX (Germany)	13,456.49	0.04%	1.74%	1.31%	1.57%	1,123,711
▲ FTSE 100 (United Kingdom)	7,622.35	0.06%	0.64%	3.68%	1.06%	1,561,765
▲ CAC 40 (France)	6,040.89	0.08%	0.47%	2.06%	1.05%	1,665,557
▼ IBEX 35 (Spain)	9,528.30	-0.16%	-0.54%	-0.37%	-0.22%	539,041
▲ MSCI AC Asia Pacific Index	173.87	0.47%	1.54%	2.84%	1.88%	21,026,049
▼ HANG SENG (Hong Kong)	28,885.14	-0.24%	1.99%	4.32%	2.47%	2,736,238
▼ SHANGHAI SEC Comp. (China)	3,106.82	-0.28%	0.07%	4.69%	1.86%	5,137,677
▲ NIKKEI 225 (Japan)	24,025.17	0.73%	3.54%	0.01%	1.56%	3,566,451
▲ BOVESPA (Brazil)	117,632.40	0.26%	0.83%	4.50%	1.72%	896,846
▼ MERVAL (Argentina)	41,633.73	-0.91%	1.26%	13.23%	-0.09%	23,943

*Legend: Variation 1D: 1 Day; 5D: 5 Days; 1M: 1 Month; YTD: Var. % 12/31/18 to date



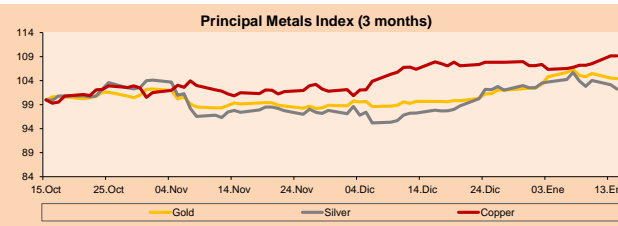
Currency	Price	1 D*	5 D*	1 M*	YTD*
▼ Euro	1.1126	-0.07%	-0.24%	0.04%	-0.78%
▲ Yen	110.0000	0.05%	1.44%	0.57%	1.28%
▲ Sterling Pound	1.3020	0.24%	-0.81%	-2.33%	-1.79%
▲ Yuan	6.8842	-0.13%	-0.88%	-1.32%	-1.13%
▲ Hong Kong Dollar	7.7763	0.06%	-0.03%	-0.27%	-0.19%
▼ Brazilian Real	4.1319	-0.26%	1.63%	0.59%	2.52%
▲ Argentine Peso	60.0575	0.16%	0.41%	0.40%	0.31%

*Legend: Variation 1D: 1 Day; 5D: 5 Days; 1M: 1 Month; YTD: Var. % 12/31/18 to date



Commodities	Close	1 D*	5 D*	1 M*	YTD*
▼ Oro (US\$ Oz. T) (LME)	1,546.28	-0.10%	-1.78%	4.74%	1.91%
▼ Plata (US\$ Oz. T) (LME)	17.80	-0.09%	-3.30%	5.11%	-0.30%
- Cobre (US\$ TM) (LME)	6,265.25	0.00%	2.25%	2.61%	1.89%
- Zinc (US\$ TM) (LME)	2,389.75	0.00%	1.77%	6.11%	4.84%
▲ Petróleo WTI (US\$ Barril) (NYM)	58.30	0.38%	-7.02%	-2.80%	-4.52%
- Estano (US\$ TM) (LME)	17,347.00	0.00%	2.01%	0.61%	0.98%
- Plomo (US\$ TM) (LME)	1,894.75	0.00%	0.30%	0.12%	-0.98%
▲ Azúcar #11 (US\$ Libra) (NYB-ICE)	14.32	1.13%	5.37%	6.07%	6.71%
▲ Cacao (US\$ TM) (NYB-ICE)	2,655.00	2.79%	4.82%	3.23%	4.53%
▲ Café Arábica (US\$ TM) (NYB-ICE)	114.90	0.31%	-6.13%	-12.22%	-11.41%

*Legenda: Variación 1D: 1 Día; 5D: 5 Días; 1M: 1 Mes; YTD: Var. % 31/12/17 a la fecha



Base: 15/10/19=100
Source: Bloomberg

Equity

Alemania (Acciones del DAX Index)				Largest gains				Largest losses			
Symbol	Curr.	Price	▲%	Symbol	Curr.	Price	▼%	Symbol	Curr.	Price	▼%
DBK GY	EUR	7.753	2.28	MRK GY	EUR	115.1	1.50	BAS GY	EUR	64.76	-1.57
CON GY	EUR	117.62	1.48	CON GY	EUR	117.62	1.48	IFX GY	EUR	21.34	-1.45
FME GY	EUR	67.24	1.42	FME GY	EUR	67.24	1.42	HEI GY	EUR	63.32	-1.19
								LHA GY	EUR	15.33	-1.10

Europe (Stocks from STOXX EUROPE 600)				Largest gains				Largest losses			
Symbol	Curr.	Price	▲%	Symbol	Curr.	Price	▼%	Symbol	Curr.	Price	▼%
WDI GY	EUR	118.9	4.67	EVR LN	Gbp	395.1	-4.22	EVK GY	EUR	25.51	-3.99
TW/LN	Gbp	209.9	3.91	PCSN LN	Gbp	605	-3.29	DHER GY	EUR	68.08	3.65
DHER GY	EUR	68.08	3.65	PIRC IM	EUR	5.09	-3.12	KBX GY	EUR	96	3.56

Global Overview:

United States:

The US market closed the day today with mixed results in its main stock indexes. The DJI had a positive variation of (+0.11%) and the S & P500 (-0.15%). The sectors that most influenced the DJI index were health (+0.52%) and communication services (+0.48%). On the other hand, the sectors that most influenced the S & P500 index were health (+0.58%) and communication services (+0.53%). In other news, China's surplus over the United States, to an important point of contention between Beijing and US President Donald Trump, decreased 8.5% in 2019. Chinese customs announced on Tuesday. This news is presumed to be welcomed by the US president, arrived shortly before both countries sign a preliminary agreement, which is expected to be ready for Wednesday, February 15. The trade surplus of China with respect to the United States in 2019 was 295.8 billion dollars, compared to 323.0 million dollars the previous year. The month of December was 23.3 billion dollars, less than in November (24.6 billion) and October (26.4 billion).

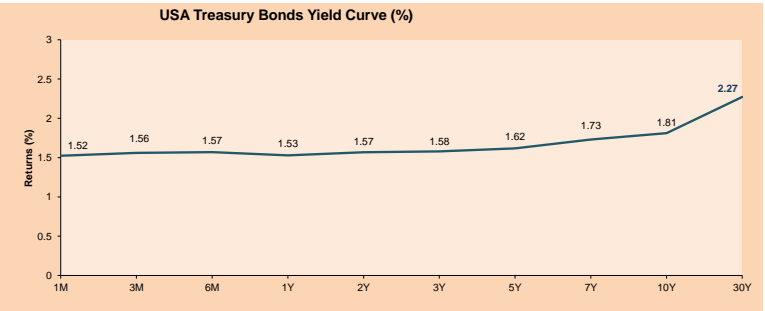
Europe:

European markets ended upwards, influenced by the arrival of Chinese negotiators in Washington, increasingly approaching the signing of the "phase one" trade agreement. It is important to remember that this preliminary agreement will be carried out after 18 months of tariff increases between the 2 world powers. In relation to Europe, the pound rose to more than \$ 1.3. This resulted after official economic data from last session reported slower UK economic growth, reaching its weakest point since November 2012. This result makes it more likely that the Bank of England will cut interest rates at the end of this month. Regarding corporate shares, NMC health increased by 10%, while the hospital chain is preparing for a legal confrontation with US activist Muddy Waters. Also, Old Mutual rose 2.7% after a South African court confirm the company's appeal against the temporary reinstatement of former CEO Peter Moyo, who was suspended for conflicts of interest last year. Thus, the STOXX 600 + 0.29%, FTSE MIB + 0.13%, BEL 20 + 0.15%, CAC + 0.08%, DAX + 0.04% and FTSE 100 + 0.06% closed upwards, among other indices.

Asia:

Asian markets closed today with mixed results in their main stock market indices. The Nikkei 225 (+0.73%), Hang Seng (-0.24%), S & P / ASX 200 (+0.85%), Nifty 50 (+0.27%) and IDX Composite (+0.46%). On the other hand, the United States took a fundamental step to achieve a trade agreement between that country and China. Washington announced that it will remove the Asian giant, China, from the list of currency handling countries. The US explained this change because after China agreed to refrain from devaluing its currency in order to lower its products for foreign buyers. In addition, it is expected that this week Washington and Beijing will sign the "phase one" of an agreement that wants to end the tariff war. "China has pledged to refrain from competitive (currency) depreciation and to promote the transparency of its accounts," said Steven Mnuchin, secretary of the US Treasury Department. In other news, Washington, Tokyo and Brussels joined forces to demand more rigid global rules against government subsidies that distort trade, accusing China mainly. The governments asked the World Trade Organization to reinforce the regulations, since according to them, these are insufficient.

ETFs	Curr.	Close	1D	5D	30D	YTD	Exchange
SPDR S&P 500 ETF TRUST	USD	327.45	-0.15%	1.46%	3.19%	1.74%	NYSE Arca
ISHARES MSCI EMERGING MARKET	USD	46.04	-0.56%	2.79%	3.65%	2.61%	NYSE Arca
ISHARES IBOXX HIGH YLD CORP	USD	88.38	-0.01%	0.37%	0.88%	0.50%	NYSE Arca
FINANCIAL SELECT SECTOR SPDR	USD	30.84	-0.19%	1.02%	0.42%	0.19%	NYSE Arca
VANECK GOLD MINERS	USD	28.26	1.79%	-4.20%	1.95%	-3.48%	NYSE Arca
ISHARES RUSSELL 2000 ETF	USD	106.57	0.37%	1.07%	1.99%	0.54%	NYSE Arca
SPDR GOLD SHARES	USD	145.69	-0.09%	-1.54%	4.78%	1.95%	NYSE Arca
ISHARES 20+ YEAR TREASURY BO	USD	138.73	0.51%	0.79%	-0.22%	2.40%	NASDAQ GM
INVESCO QQQ TRUST SERIES 1	USD	220.08	-0.39%	2.11%	6.22%	3.51%	NASDAQ GM
ISHARES NASDAQ BIOTECHNOLOGY	USD	121.11	1.64%	1.64%	0.40%	0.50%	NASDAQ GM
ENERGY SELECT SECTOR SPDR	USD	59.84	0.02%	-1.43%	-0.78%	-0.33%	NYSE Arca
PROSHARES ULTRA VIX ST FUTUR	USD	11.03	-0.90%	13.35%	-18.11%	-14.43%	NYSE Arca
UNITED STATES OIL FUND LP	USD	12.28	0.66%	-6.47%	-1.68%	-4.14%	NYSE Arca
ISHARES MSCI BRAZIL ETF	USD	46.82	1.02%	-0.85%	2.47%	-1.33%	NYSE Arca
SPDR S&P OIL & GAS EXP & PR	USD	23.14	0.39%	-5.47%	6.34%	-2.36%	NYSE Arca
UTILITIES SELECT SECTOR SPDR	USD	64.98	0.29%	1.67%	2.54%	0.56%	NYSE Arca
ISHARES US REAL ESTATE ETF	USD	93.55	-0.38%	1.85%	3.26%	0.50%	NYSE Arca
SPDR S&P BIOTECH ETF	USD	95.65	2.94%	1.41%	0.30%	0.57%	NYSE Arca
ISHARES IBOXX INVESTMENT GRA	USD	128.55	0.12%	0.50%	1.12%	0.46%	NYSE Arca
ISHARES JIP MORGAN USD EMERGI	USD	114.68	-0.03%	0.28%	0.79%	0.10%	NASDAQ GM
REAL ESTATE SELECT SECT SPDR	USD	38.92	-0.49%	2.18%	3.54%	0.65%	NYSE Arca
ISHARES CHINA LARGE-CAP ETF	USD	44.82	-1.02%	1.84%	5.21%	2.73%	NYSE Arca
CONSUMER STAPLES SPDR	USD	63.09	0.03%	1.71%	0.49%	0.17%	NYSE Arca
VANECK JR GOLD MINERS	USD	40.61	2.40%	-4.78%	3.25%	-3.90%	NYSE Arca
SPDR BBG BARC HIGH YIELD BND	USD	110.12	-0.05%	0.34%	0.87%	0.53%	NYSE Arca
VANGUARD REAL ESTATE ETF	USD	93.04	-0.37%	1.85%	2.98%	0.27%	NYSE Arca
GRAYSCALE BITCOIN TRUST BTC	USD	10.03	6.25%	-0.69%	14.11%	22.47%	OTC US



Source: Bloomberg

Capital Market Laboratory Coordinator: Economist Bruno Bellido Anicama
Collaboration: Alonso Butters, Jeanniere León y Manuel Muñoz Najer
e-mail: pulsobursatil@ulima.edu.pe
facebook: www.facebook.com/pulsobursatil.ul
Phone number: 4376767 Annex: 35340

PULSO BURSÁTIL

LIMA

Stocks

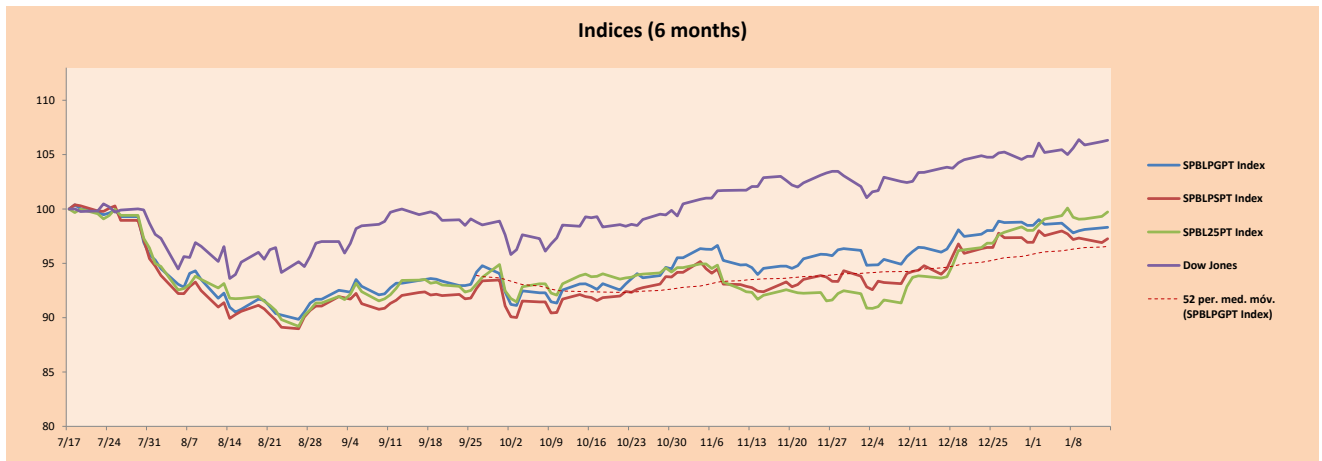
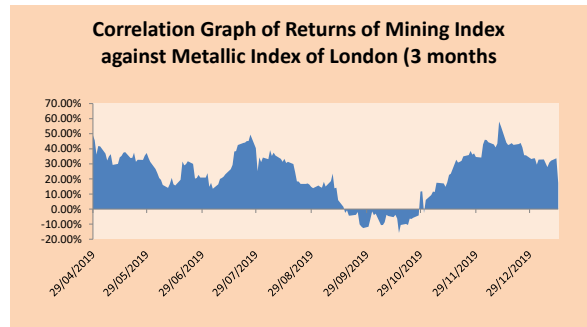
Ticker	Currency	Price	1D*	5D*	30D*	YTD*	Frequency	Volume (US\$)	Beta	Dividend Yield (%)	Price Earning	Market Cap. (M US\$)	Economic Sector*	Index Weight
▼ ALICORC1 PE**	S/.	9	0	0	0	0	100.00%	1,349,909	0.73	2.67	17.30	2,308.71	Industrial	3.53%
▲ ATACOB1 PE**	S/.	0.17	-4.52%	-11.52%	26.12%	2.42%	100.00%	29,438	#N/A N/A	0.00	-	48.04	Mining	1.02%
▲ BACKUS1 PE**	S/.	32.31	0.31%	7.66%	16.85%	13.37%	72.22%	20,324	0.33	4.60	9.53	13,126.96	Industrial	0.82%
▼ BAP PE**	US\$	210.00	-0.47%	0.23%	1.33%	-1.26%	88.89%	96,896	1.29	4.00	-	16,749.91	Diverse	5.82%
▲ BVN PE**	US\$	13.79	2.15%	-5.87%	-7.08%	-9.87%	88.89%	904,172	1.30	0.61	-	3,801.00	Mining	5.88%
▲ CASAGRC1 PE**	S/.	3.10	3.33%	3.33%	10.71%	2.31%	100.00%	7,746	0.66	0.41	18.20	78.57	Agricultural	1.31%
▲ BBVAC1 PE**	S/.	3.45	1.47%	0.88%	2.37%	0.58%	100.00%	80,845	0.48	4.00	12.66	6,109.40	Finance	2.85%
▲ CORARE1 PE**	S/.	0.93	-1.09%	3.33%	9.41%	2.20%	100.00%	40,563	0.87	7.07	4.52	365.14	Industrial	1.72%
▼ CPACASC1 PE**	S/.	6.07	-0.49%	-0.49%	1.17%	-1.30%	94.44%	1,172,698	0.69	5.93	33.72	779.40	Industrial	2.38%
▼ CVERDEC1 PE**	US\$	20.50	-2.15%	5.67%	7.89%	6.22%	88.89%	310,092	1.02	2.09	-	7,176.15	Mining	5.25%
- ENGEPEC1 PE**	S/.	2.32	0.00%	0.87%	0.87%	0.87%	38.89%	6,165	0.55	0.00	12.61	1,981.68	Public Services	1.44%
- ENDISPC1**	S/.	7.15	0.00%	0.00%	3.17%	-2.72%	50.00%	107,379	0.49	3.22	11.21	1,373.81	Public Services	0.98%
▼ FERREYC1 PE**	S/.	2.09	-0.48%	-2.79%	2.45%	-4.57%	100.00%	259,622	0.90	4.90	7.85	613.58	Diverse	4.90%
▲ GRAMONC1 PE**	S/.	1.89	-0.59%	-0.59%	14.19%	-0.59%	94.44%	190,278	1.01	0.00	-	443.38	Diverse	4.05%
▲ IFS PE**	US\$	39.91	1.04%	-4.18%	-0.35%	-2.42%	88.89%	169,325	0.94	4.38	11.54	4,607.52	Diverse	7.22%
- INRETC1 PE**	US\$	38.70	0.00%	0.52%	10.23%	7.50%	100.00%	86,572	0.69	0.88	31.35	3,978.64	Diverse	5.28%
- LUSURC1 PE**	S/.	26.00	0.00%	0.00%	10.17%	0.97%	100.00%	127,747	0.72	4.62	20.81	3,809.57	Public Services	1.81%
▲ MINSUR1 PE**	S/.	1.60	1.91%	3.23%	1.27%	2.56%	61.11%	57,659	1.09	4.73	7.04	1,387.98	Mining	3.09%
▲ PML PE**	US\$	0.07	-4.41%	-9.72%	-7.14%	16.07%	66.67%	2,600	1.19	0.00	-	17.15	Mining	2.12%
▲ RELAPAC1 PE**	S/.	0.13	2.46%	-0.79%	25.00%	1.63%	100.00%	38,658	0.90	0.00	-	312.90	Industrial	2.12%
▲ SCCO PE**	US\$	44.14	-0.20%	5.83%	6.23%	4.03%	94.44%	33,146	1.29	4.63	23.23	34,122.82	Mining	2.14%
- SIDERC1 PE**	S/.	0.90	0.00%	2.27%	8.43%	1.12%	100.00%	216,458	1.41	11.34	10.23	332.53	Industrial	1.43%
▲ TV PE**	US\$	0.19	3.31%	2.19%	19.87%	8.09%	77.78%	84,137	1.98	0.00	-	152.24	Mining	2.93%
▲ UNACEMC1 PE**	S/.	1.96	0.51%	-2.00%	0.00%	-2.00%	88.89%	123,696	0.68	2.65	9.96	1,072.25	Industrial	3.00%
▲ VOLCABC1 PE**	S/.	0.53	1.92%	0.00%	25.59%	19.10%	100.00%	1,133,644	1.45	0.00	-	2,104.92	Mining	5.90%
- NEXAPEC1 PE**	S/.	3.45	0.00%	0.00%	1.47%	0.00%	50.00%	3,114	0.88	0.00	33.51	1,373.60	Mining	1.56%

Quantity of shares: 26
 Source: Bloomberg, Economática
 * Bloomberg Industry Classification System
 ** PER is used in the stock market and original currency of the instrument
 *Legend: Variation 1D: 1 Day; 5D: 5 Days; 1M: 1 Month; YTD: Var.% 12/31/18 to date

Sectorial Indices

	Close	1D*	5D*	30D*	YTD*	Beta
▲ Mining Index	302.14	0.45%	0.51%	0.36%	-0.83%	1.32
▲ Consumer Index	1,193.00	0.28%	1.02%	7.81%	4.63%	0.43
▲ Industrial Index	206.39	-0.20%	-1.48%	3.74%	-2.24%	0.64
▼ Banking and Financial Index	1,167.86	-0.61%	-0.05%	0.07%	-1.00%	1.26
▼ Construction Index	223.73	-0.13%	-0.92%	3.98%	-1.28%	0.53
▼ Services Index	652.57	0.04%	0.00%	5.42%	0.16%	0.29
▲ Juniors Index	13.79	-7.82%	-12.44%	-9.51%	-4.70%	0.13
▲ Electric Index	637.07	0.04%	0.00%	5.42%	0.16%	0.29

*Legend: Variation 1D: 1 Day; 5D: 5 Days; 1M: 1 Month; YTD: Var.% 12/31/18 to date



Capital Market Laboratory Coodinator: Economist Bruno Bellido Anicama
 Collaboration: Alonso Butter, Jeanpierre León y Manuel Muñoz Najar
 e-mail: pulsobursatil@ulima.edu.pe
 facebook: www.facebook.com/pulsobursatil.ul
 Phone number : 4376767 Annex: 35340

The content of this document is just for informational purposes. The information and opinions expressed should not be consider as recommendations for future decisions. Under any circumstances, the Capital Market Laboratory of University of Lima will be responsible for the use of the statements in this document.

PULSO BURSÁTIL

SOVEREIGN RATING

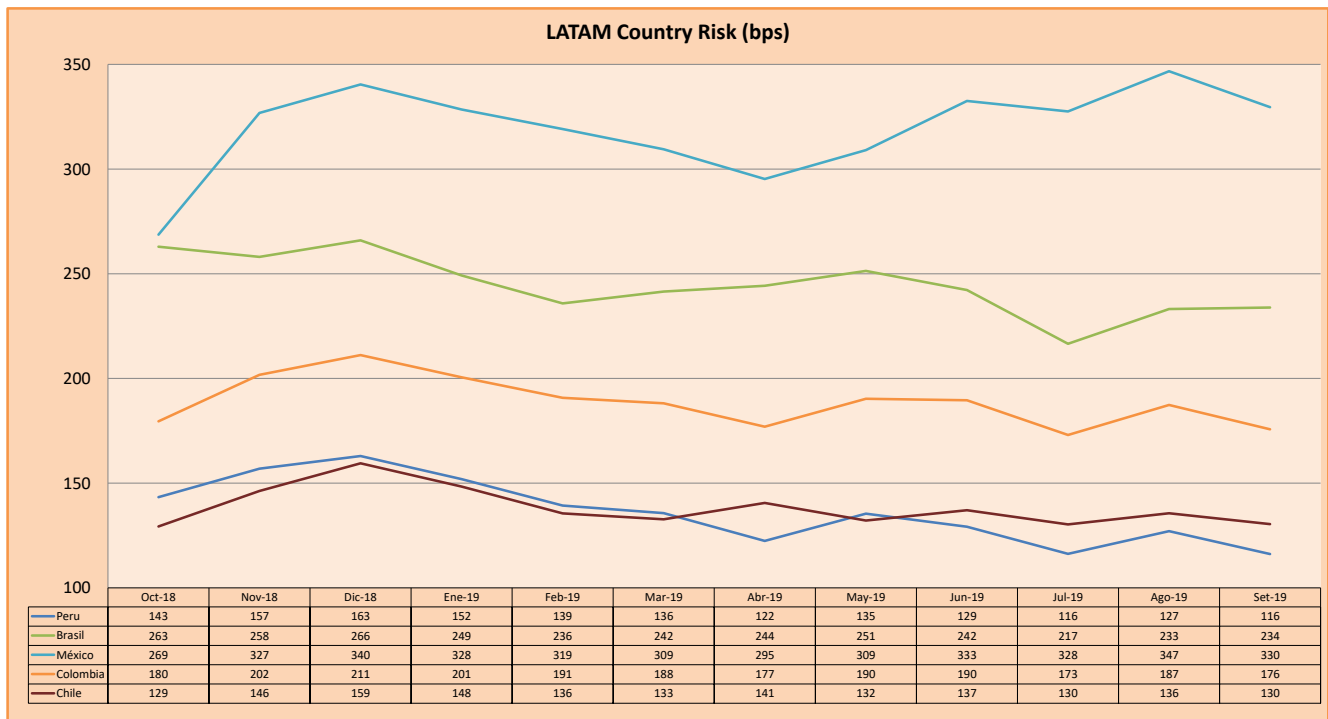
RISK RATINGS

Moody's	S&P	Fitch	
Aaa	AAA	AAA	Prime
Aa1	AA+	AA+	High credit quality
Aa2	AA	AA	
Aa3	AA-	AA-	
A1	A+	A+	Medium-high grade, with low credit risk
A2	A	A	
A3	A-	A-	
Baa1	BBB+	BBB+	Moderate Credit Risk
Baa2	BBB	BBB	
Baa3	BBB-	BBB-	
Ba1	BB+	BB+	It has speculative elements and it is subject to substantial credit risk
Ba2	BB	BB	
Ba3	BB-	BB-	
B1	B+	B+	It is considered speculative and it has high credit risk
B2	B	B	
B3	B-	B-	
Caa1	CCC+	CCC	Bad credit conditions and it is subject to high credit risk
Caa2	CCC		
Caa3	CCC-		
Ca	C	DDD DD D	Very close to default or in default
C	D		

Source: Bloomberg

Latin America Credit Rating			
Clasificadora de riesgo			
Country	Moody's	Fitch	S&P
Peru	A3	BBB+	BBB+
Mexico	A3	BBB	BBB+
Venezuela	C	WD	SD
Brazil	Ba2	BB-	BB-
Colombia	Baa2	BBB	BBB-
Chile	A1	A	A+
Argentina	Caa2 ^-	CC	CCC-
Panama	Baa1	BBB	BBB+

Source: Bloomberg



Source: BCRP

Capital Market Laboratory Coordinator: Economist Bruno Bellido Anicama
 Support: Alonso Butters, Jeanpierre León y Manuel Muñoz Najar
 e-mail: pulsobursatil@ulima.edu.pe
 facebook: www.facebook.com/pulsobursatil.ul
 Phone number : 4376767 Annex: 35340

The content of this document is just for informational purposes. The information and opinions expressed should not be consider as recommendations for future decisions. Under any circumstances, the Capital Market Laboratory of University of Lima will be responsible for the use of the statements in this document.