



PULSO BURSÁTIL

Lima, February 7, 2020

MILA

Main Indexes	Close	1 D*	5 D*	1 M*	YTD*	Market Cap. (US\$ bill)*
▼ IPISA (Chile)	4,686.83	-1.01%	1.31%	-7.14%	-0.65%	120.52
▼ IGPA (Chile)	23,469.59	-0.84%	1.31%	-6.39%	-0.52%	154.84
▲ COLSC (Colombia)	1,004.81	0.19%	1.82%	1.16%	2.93%	9.65
▲ COLCAP (Colombia)	1,654.70	0.05%	1.87%	0.04%	-0.41%	103.39
▲ S&P/BVL (Perú)*	19,883.88	0.02%	0.26%	-2.74%	-3.11%	93.72
▲ S&P/BVL SEL (Perú)	524.94	-0.03%	1.59%	-1.53%	-1.25%	72.40
▼ S&P/BVL LIMA 25	25,819.02	-0.04%	3.00%	-0.85%	0.21%	86.96
▼ IPC (México)	44,399.33	-0.32%	0.34%	-0.90%	1.64%	292.38
▼ S&P MILA 40	572.07	-1.25%	1.14%	-6.51%	-5.14%	240.04

* Market Cap. from last session * Legend: Variation 1D: 1 day; 5D: 5 days; 1M: 1 Month; YTD: Var%12/31/19 to date

Equity

Largest gains	Exchange	Curr.	Price	▲%	Largest losses	Exchange	Curr.	Price	▼%
GASNATURAL	Colomb.	COP	86800.00	4.58	CAP	Santia.	CLP	4710.00	-4.68
VILLAS	Colomb.	COP	6300.00	3.82	PROMIGAS	Colomb.	COP	7500.00	-3.72
ENKA	Colomb.	COP	11.20	3.70	BVN	Lima	USD	12.44	-3.72
CHILE	Santia.	CLP	81.38	3.26	VOLCABC1	Lima	PEN	0.54	-3.57

Per Turnover

	Exchange	Amount (US\$)
CHILE	Santia.	6,438,707
BSANTANDER	Santia.	4,831,140
SOM-B	Santia.	4,828,349
FALABELLA	Santia.	4,609,555
PFBCOLOM	Colomb.	3,875,585

Per Volume

	Exchange	Volume
BSANTANDER	Santia.	93,843,365
CHILE	Santia.	63,539,037
ORO BLANCO	Santia.	10,817,875
NORTEGRAN	Santia.	10,620,690
VAPORES	Santia.	10,114,958

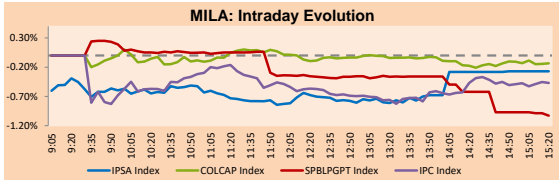
MILA

Peru: The General Index of the BVL ended today's session with a negative result of -1.08%. The actions with the worst performance were CIA de Minas Buenaventura (-3.72%) and Volcan CIA Minera (-3.57%). The PEN spot reached S / 3.3948. Headline: Peru: oil production increases 57% in January to reach 59,804 barrels per day.

Chile: The IPISA index ended the day with a negative return -0.27%. The actions with the worst performance were CAP SA (-4.68%) and Sociedad Química y Minera Chile-B (-3.32%). Headline: Real wages registered a slight acceleration and rose 1.4% last year.

Colombia: The COLCAP index had a positive result of +0.04%. The values with the best results were Grupo Nutresa SA (+1.12%) and Avianca Holding (+0.98%). Headline: Colombia will seek investors in Latin America for its public debt.

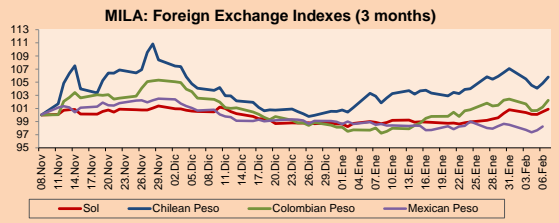
Mexico: The MEXBOL index ended the day with a negative return -0.21%. The actions with the worst performance were Genomma Lab Internacional (-4.38%) and Bece SAB de CV (-2.53%). Headline: Mexican Infrastructure would rise due to large investments, experts say.



Source: Bloomberg

Currencies	Price	1 D*	5 D*	30 D*	YTD*
▲ Sol (PEN)	3,3890	0.39%	0.12%	2.23%	2.32%
▲ Chilean Peso (CLP)	790.86	0.89%	-1.20%	3.85%	5.20%
▲ Colombian Peso (COP)	3,414.45	1.01%	-0.18%	5.16%	4.19%
▲ Mexican Peso (MXN)	18.77	0.58%	-0.42%	-0.26%	-0.85%

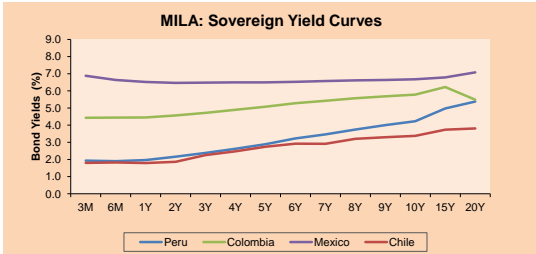
* Legend: Variation 1D: 1 day; 5D: 5 days; 1M: 1 Month; YTD: Var%12/31/19 to date



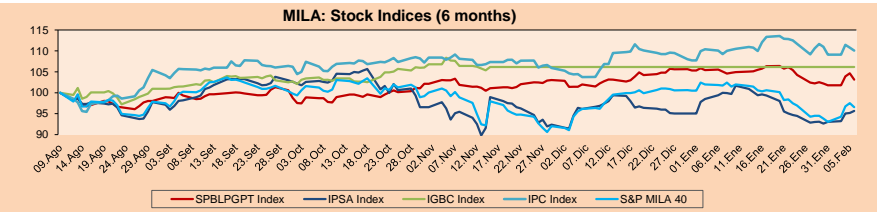
Base: 08/11/19=100
Source: Bloomberg

Fixed Income

Instrument	Currency	Price	Bid Yield (%)	Ask Yield (%)	Duration
PERU 4.125 08/25/2027	USD	113.797	2.15	2.11	6.46
PERU 7.35 07/21/25	USD	127.512	2.02	1.97	4.63
PERU 8.75 11/21/33	USD	168.418	2.77	2.74	9.39
PERU 6.55 03/14/37	USD	150.552	2.82	2.79	11.09
PERU 5.625 11/18/2050	USD	150.833	3.07	3.06	17.70
CHILE 2.25 10/30/22	USD	101.067	1.90	1.79	2.61
CHILE 3.875 08/05/20	USD	101.019	2.02	1.48	0.48
CHILE 3.625 10/30/2042	USD	110.948	2.97	2.95	15.90
COLOM 11.75 02/25/20	USD	100.475	1.42	-2.27	0.04
COLOM 11.85 03/09/28	USD	163.436	2.99	2.93	5.78
COLOM 10.375 01/28/33	USD	162.29	4.17	4.08	8.50
COLOM 7.375 09/18/37	USD	147.788	3.68	3.65	11.14
COLOM 6.125 01/18/41	USD	135.043	3.72	3.69	13.18
MEX 4 10/02/23	USD	106.585	2.16	2.06	3.35
MEX5.55 01/45	USD	127.645	3.832	3.81	14.94



Source: Bloomberg

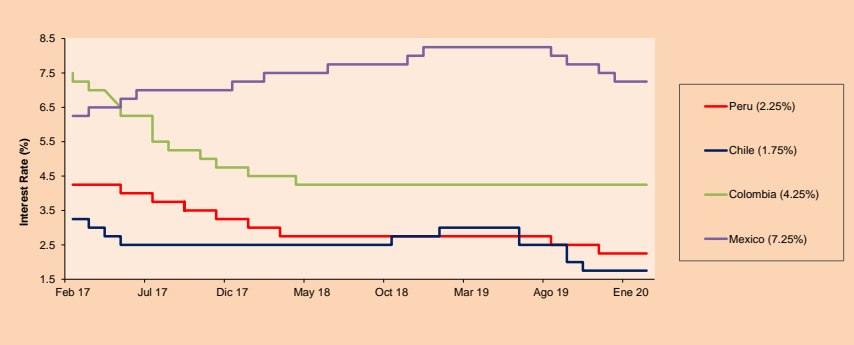


Base: 12/08/19=100
Source: Bloomberg

ETFs

	Curr.	Close	1 D	5 D	30 D	YTD	Exchange
▼ iShares MSCI All Peru Caped Index Fund	USD	34.5	-1.43%	0.17%	-5.99%	-6.88%	NYSE Arca
▼ iShares MSCI All Chile Caped Index Fund	USD	31.59	-1.56%	3.00%	-7.79%	-5.22%	Cboe BZX
▼ Global X MSCI Colombia	USD	13.335	-0.45%	2.03%	-4.82%	-4.06%	NYSE Arca
▼ iShares MSCI Mexico Capped	USD	46.23	-0.62%	0.81%	0.26%	2.66%	NYSE Arca
▼ iShares MSCI Emerging Markets	USD	43.36	-1.39%	2.97%	-3.75%	-3.37%	NYSE Arca
▼ Vanguard FTSE Emerging Markets	USD	42.95	-1.36%	2.24%	-4.17%	-3.42%	NYSE Arca
▼ iShares Core MSCI Emerging Markets	USD	52.03	-1.33%	2.85%	-3.51%	-3.22%	NYSE Arca
▼ iShares JP Morgan Emerging Markets Bonds	USD	56.37	-0.79%	1.66%	-3.74%	-3.90%	Cboe BZX
▼ Morgan Stanley Emerging Markets Domestic	USD	6.92	-0.43%	0.29%	-0.72%	-1.00%	New York

MILA: Reference Rate



Source: Bloomberg

Capital Market Laboratory Coordinador: Economist Bruno Bellido Anicama
Collaboration: Alonso Butters, Luis Davila, Jeanpiere León y Manuel Muñoz Najara
e-mail: pulsoBursatil@ulima.edu.pe
facebook: www.facebook.com/pulsoBursatil.ul
Phone number : 4376767 Annex: 35340



PULSO BURSÁTIL

WORLD

Table with 6 columns: Index Name, Close, 1 D, 5 D, 1 M, YTD, Market Cap. Lists major world indices like Dow Jones, S&P 500, etc.

Equity

Two tables showing equity performance for Germany (DAX Index) and Europe (STOXX EUROPE 600) with columns for Largest gains, Curr., Price, % change, and Exchange.

Global Overview:

United States:

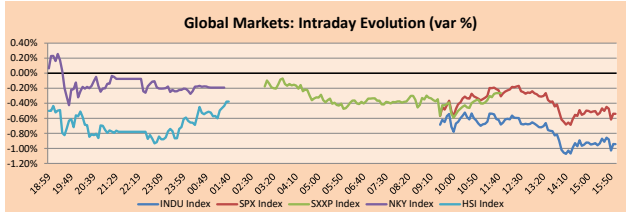
The US markets closed today's session in losses, in that way, the four-day positive return streak for major American indexes broke due to the publication of expectations of a greater impact of the coronavirus over employment in the Chinese and American economy.

Europe:

European markets ended today's session in negative territory, while investors continue to follow coronavirus developments and corporate profits. S&P Global Ratings announced in a report that it decreased growth estimates for the Chinese economy by 2020.

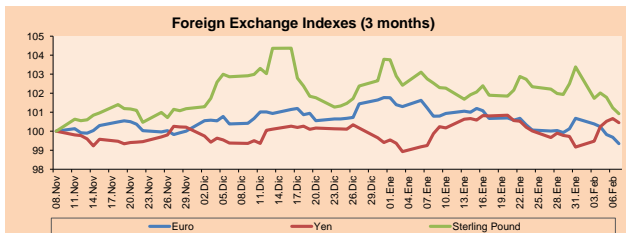
Asia:

Asian markets closed today with mostly negative variations. Its main stock indexes performed; Nikkei225 (-0.73%), Hang Seng (-0.33%), S & P / ASX 200 (-0.28%), Nifty (0.33%) and IDX Composite (+0.21%).



Source: Bloomberg

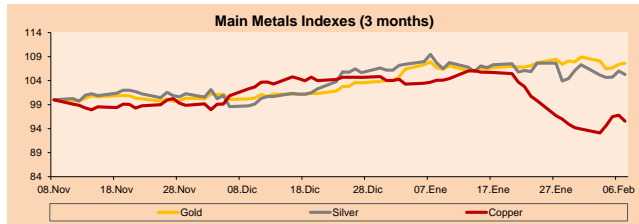
Table with 6 columns: Currency, Price, 1 D, 5 D, 1 M, YTD. Lists major currencies like Euro, Yen, Pound, etc.



Base: 08/11/19=100 Source: Bloomberg

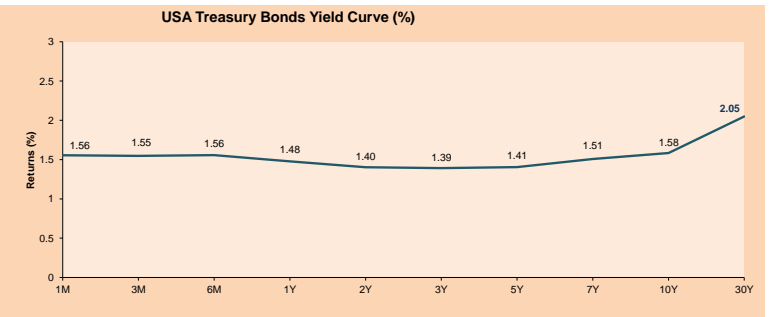
Table with 6 columns: Commodity, Close, 1 D, 5 D, 1 M, YTD. Lists commodities like Oil, Platinum, Cobalt, Zinc, etc.

*Legend: Variation 1D: 1 Day; 5D: 5 Days; 1M: 1 Month; YTD: Var. % 12/31/19 to date



Base: 08/11/19=100 Source: Bloomberg

Table of ETFs with columns: Name, Curr., Close, 1 D, 5 D, 30 D, YTD, Exchange. Lists various ETFs like SPDR S&P 500, iShares MSCI Emerging Market, etc.



Source: Bloomberg

PULSO BURSÁTIL

LIMA

Stocks

Ticker	Currency	Price	1 D*	5 D*	30 D*	YTD*	Frequency	Volume (US\$)	Beta	Dividend Yield (%)	Price Earning	Market Cap. (M US\$)	Economic Sector*	Index Weight
▲ ALICORC1 PE**	S/.	9.15	0.19%	0.55%	0.77%	-0.54%	100.00%	1,440,249	0.62	2.62	17.59	2,301.08	Industrial	3.53%
ATACOCB1 PE**	S/.	0.19	0.00%	13.33%	2.75%	13.33%	95.00%	1,962	#N/A N/#	0.00	-	52.13	Mining	1.02%
- BACKJUS1 PE**	S/.	31.99	0.00%	0.00%	6.42%	12.25%	80.00%	14,754	0.39	0.00	9.43	12,745.37	Industrial	0.82%
▼ BAP PE**	US\$	201.25	-1.01%	-2.68%	-4.51%	-5.37%	95.00%	558,303	1.27	4.17	-	16,052.00	Diverse	5.82%
▼ BVN PE**	US\$	12.44	-3.72%	-2.81%	-12.39%	-18.69%	100.00%	391,810	1.22	0.67	-	3,428.89	Mining	5.88%
- CASAGRC1 PE**	S/.	2.91	0.00%	0.00%	-3.00%	-3.96%	100.00%	3,296	0.82	0.43	17.08	72.33	Agricultural	1.31%
- BBVAC1 PE**	S/.	3.44	0.00%	1.18%	-0.29%	0.29%	100.00%	1,402	0.48	4.01	13.13	5,973.77	Finance	2.85%
▼ CORAREI1 PE**	S/.	0.91	-1.09%	0.00%	2.25%	0.00%	100.00%	21,301	0.91	7.22	4.42	359.67	Industrial	1.72%
- CPACASC1 PE**	S/.	6.18	0.00%	0.65%	2.15%	0.49%	100.00%	907	0.55	0.00	34.33	778.01	Industrial	2.38%
▼ CVERDEC1 PE**	US\$	18.90	-0.26%	2.16%	-3.08%	-2.07%	95.00%	43,961	1.07	2.27	-	6,616.06	Mining	5.25%
- ENGEPEC1 PE**	S/.	2.39	0.00%	0.42%	3.91%	3.91%	55.00%	21,580	0.55	0.00	12.99	2,001.95	Public Services	1.44%
- ENDISPC1**	S/.	6.76	0.00%	-6.11%	-5.45%	-8.03%	55.00%	15,958	0.45	0.00	10.59	1,273.74	Public Services	0.98%
▼ FERREYC1 PE**	S/.	2.09	-0.48%	4.50%	-1.42%	-4.57%	100.00%	75,667	0.95	4.90	7.85	601.70	Diverse	4.90%
▼ GRAMONC1 PE**	S/.	1.78	-1.11%	16.34%	4.71%	4.71%	100.00%	21,231	1.59	0.00	-	457.96	Diverse	4.05%
- IFS PE**	US\$	42.00	0.00%	-0.36%	1.16%	2.69%	100.00%	22,134	0.81	4.17	12.39	4,848.80	Diverse	7.22%
▼ INRETC1 PE**	US\$	38.50	-0.65%	2.39%	-1.28%	6.94%	100.00%	16,170	0.60	0.88	31.83	3,958.08	Diverse	5.28%
▼ LUSURC1 PE**	S/.	25.52	-1.85%	6.33%	-1.85%	-0.89%	100.00%	3,908	0.92	4.70	20.43	3,666.86	Public Services	1.81%
- MINSUR1 PE**	S/.	1.65	0.00%	0.00%	6.45%	5.77%	100.00%	10,224	1.11	4.59	7.11	1,403.64	Mining	3.09%
- PML PE**	US\$	0.07	0.00%	4.62%	-5.56%	21.43%	80.00%	5,289	1.12	0.00	-	17.94	Mining	2.12%
▼ RELAPAC1 PE**	S/.	0.12	0.00%	-3.36%	-4.96%	-6.50%	85.00%	85	1.04	0.00	-	282.30	Industrial	2.12%
▼ SCCO PE**	US\$	38.62	-2.60%	1.63%	-7.76%	-8.98%	90.00%	158,764	1.41	5.29	20.33	29,855.53	Mining	2.14%
▼ SIDERC1 PE**	S/.	0.90	-1.10%	2.27%	0.00%	1.12%	100.00%	11,714	1.35	11.34	10.23	326.09	Industrial	1.43%
▼ TV PE**	US\$	0.14	-2.86%	-8.72%	-24.44%	-21.39%	95.00%	32,106	2.09	0.00	-	109.73	Mining	2.93%
▼ UNACEMC1 PE**	S/.	1.98	0.00%	4.21%	-1.00%	-1.00%	100.00%	27,853	0.73	2.63	10.04	1,062.23	Industrial	3.00%
▼ VOLCABC1 PE**	S/.	0.54	-3.57%	12.03%	5.88%	21.35%	100.00%	161,033	1.81	0.00	-	2,066.56	Mining	5.90%
- NEXAPEC1 PE**	S/.	3.50	0.00%	2.94%	1.45%	1.45%	65.00%	28,619	0.78	0.00	33.31	1,366.03	Mining	1.56%

Quantity of shares: 26

Source: Bloomberg, Economía

* Bloomberg Industry Classification System

** PER is used in the stock market and original currency of the instrument

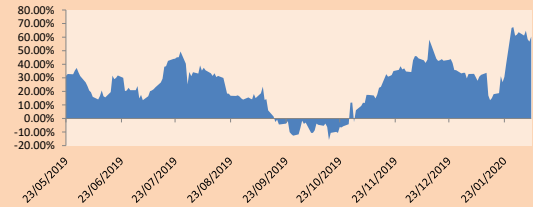
*Legend: Variation 1D: 1 Day; 5D: 5 Days; 1M: 1 Month; YTD: Var.% 12/31/19 to date

Sectorial Indexes

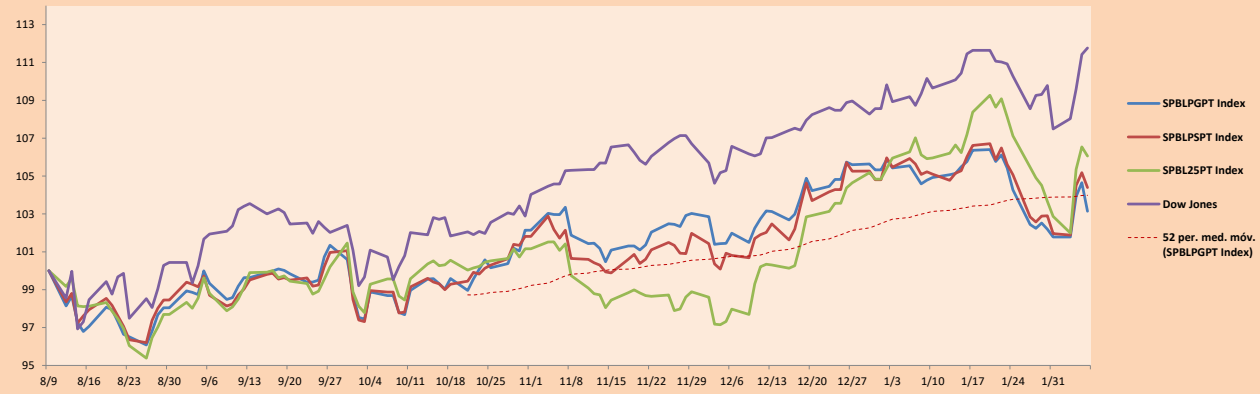
	Close	1D*	5D*	30D*	YTD*	Beta
▼ Mining Index	277.39	-2.42%	0.38%	-6.39%	-8.95%	1.34
▼ Consumer Index	1,206.50	-0.11%	1.27%	1.79%	5.73%	0.31
▼ Industrial Index	209.08	-0.36%	5.05%	0.42%	-0.97%	0.74
▼ Banking and Financial Index	1,151.49	-0.51%	-2.26%	-1.77%	-2.38%	1.27
▼ Construction Index	228.27	-0.31%	5.44%	1.30%	0.72%	0.66
▼ Services Index	645.45	-0.66%	1.36%	-1.09%	-0.93%	0.35
▲ Juniors Index	14.79	0.41%	1.79%	-3.77%	2.21%	-0.04
▼ Electric Index	630.12	-0.67%	1.36%	-1.09%	-0.93%	0.35

*Legend: Variation 1D: 1 Day; 5D: 5 Days; 1M: 1 Month; YTD: Var.% 12/31/19 to date

Correlation of Returns of Mining Index against Metallic Index of London (3 months)



Indexes (6 months)



Base: 09/08/19=100
Source: Bloomberg

Capital Market Laboratory Coordinator: Economist Bruno Bellido Anicama
Collaboration: Alonso Butter, Luis Davila, Jeanpiere León y Manuel Muñoz Najar
e-mail: pulsoBursatil@ulima.edu.pe
facebook: www.facebook.com/pulsoBursatil.ul
Phone number: 4376767 Annex: 35340

The content of this document is just for informational purposes. The information and opinions expressed should not be consider as recommendations for future decisions. Under any circumstances, the Capital Market Laboratory of University of Lima will be responsible for the use of the statements in this document.

PULSO BURSÁTIL

SOVEREIGN RATING

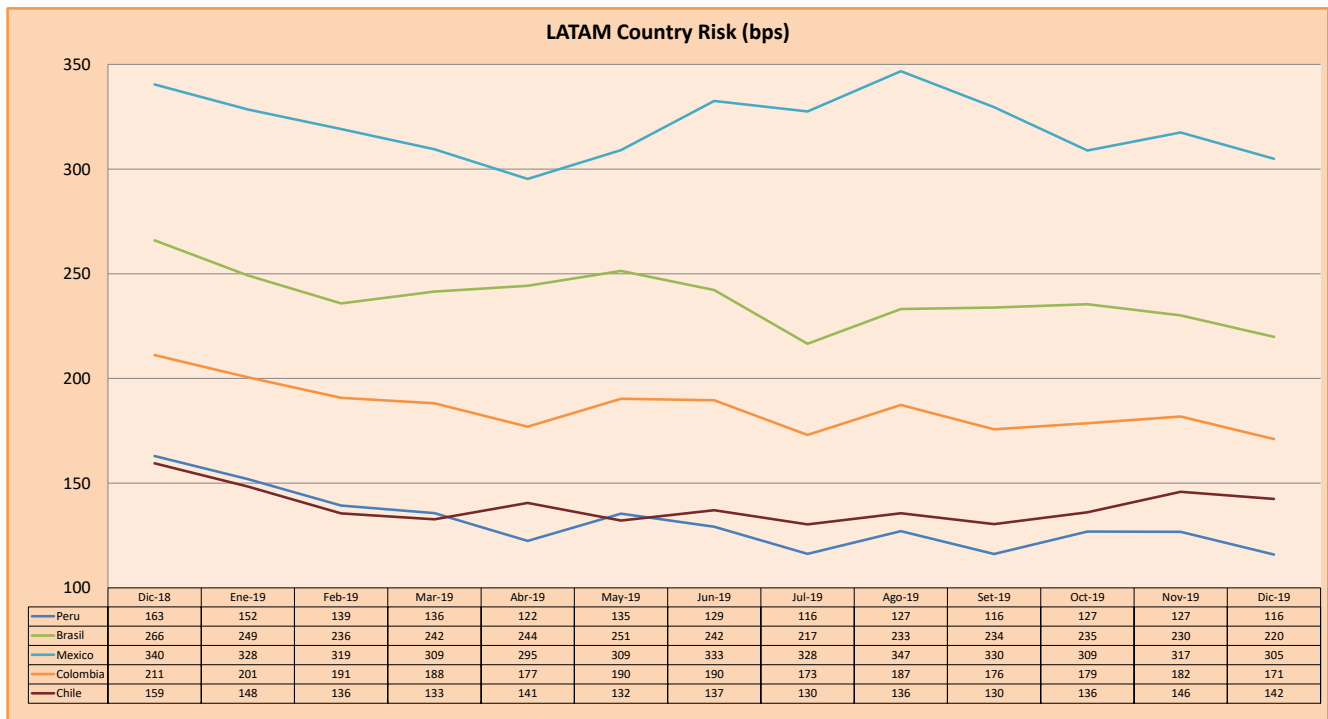
RISK RATINGS

Moody's	S&P	Fitch		
Aaa	AAA	AAA	Prime	
Aa1	AA+	AA+	High credit quality	
Aa2	AA	AA		
Aa3	AA-	AA-		
A1	A+	A+	Medium-high grade, with low credit risk	
A2	A	A		
A3	A-	A-		
Baa1	BBB+	BBB+	Moderate Credit Risk	
Baa2	BBB	BBB		
Baa3	BBB-	BBB-		
Ba1	BB+	BB+	It has speculative elements and it is subject to substantial credit risk	
Ba2	BB	BB		
Ba3	BB-	BB-		
B1	B+	B+	It is considered speculative and it has high credit risk	
B2	B	B		
B3	B-	B-		
Caa1	CCC+	Bad credit conditions and it is subject to high credit risk		
Caa2	CCC			
Caa3	CCC-			
Ca	C	Very close to default or in default		
C	D			DDD
				DD
		D		

Source: Bloomberg

Latin America Credit Rating			
Country	Rating Agency		
	Moody's	Fitch	S&P
Peru	A3	BBB+	BBB+
Mexico	A3	BBB	BBB+
Venezuela	C	WD	SD
Brazil	Ba2	BB-	BB-
Colombia	Baa2	BBB	BBB-
Chile	A1	A	A+
Argentina	Caa2 ^-	CC	CCC-
Panama	Baa1	BBB	BBB+

Source: Bloomberg



Source: BCRP

Capital Market Laboratory Coordinator: Economist Bruno Bellido Anicama
 Support: Alonso Butters, Luis Davila, Jeanpiere León y Manuel Muñoz Najar
 e-mail: pulsoborsatil@ulima.edu.pe
 facebook: www.facebook.com/pulsoborsatil.ul
 Phone number : 4376767 Annex: 35340

The content of this document is just for informational purposes. The information and opinions expressed should not be considered as recommendations for future decisions. Under any circumstances, the Capital Market Laboratory of University of Lima will be responsible for the use of the statements in this document.