

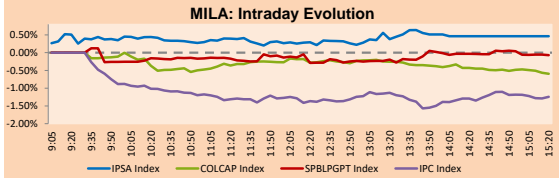
PULSO BURSÁTIL

Lima, January 31, 2020

MILA

Main Indexes	Close	1 D*	5 D*	1 M*	YTD*	Market Cap. (US\$ bill)*
▲ IPISA (Chile)	4,572.06	0.56%	0.79%	-5.00%	-1.55%	116.27
▲ IGPA (Chile)	22,958.19	0.43%	0.54%	-4.50%	-1.44%	149.85
▲ COLSC (Colombia)	981.48	0.08%	-0.99%	-0.57%	0.44%	6.70
▲ COLCAP (Colombia)	1,623.83	0.23%	0.23%	-2.91%	-2.09%	101.58
▼ S&P/BVL (Perú)*	19,834.90	-0.01%	-0.65%	-3.46%	-3.37%	93.05
▼ S&P/BVL SEL (Perú)	516.99	-0.05%	-0.91%	-3.37%	-2.76%	71.60
▼ S&P/BVL LIMA 25	25,270.72	-0.10%	-2.56%	-3.01%	-1.97%	86.31
▼ IPC (México)	44,108.31	-1.68%	-2.29%	-1.16%	1.30%	288.93
▼ S&P MILA 40	558.18	-0.85%	-1.31%	-8.76%	-7.44%	234.85

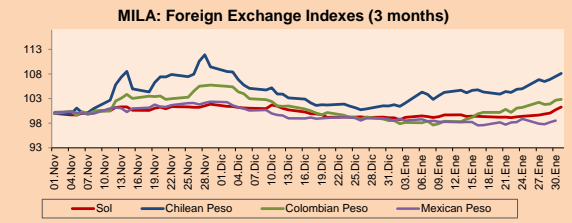
* Market Cap. from last session *Legend: Variation 1D: 1 day; 5D: 5 days; 1M: 1 Month; YTD: Var%12/31/19 to date



Source: Bloomberg

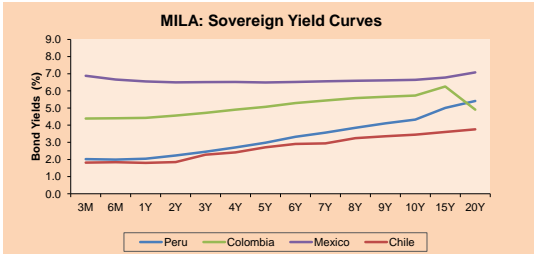
Currencies	Price	1 D*	5 D*	30 D*	YTD*
▲ Sol (PEN)	3,384.9	0.52%	1.84%	2.19%	2.19%
▲ Chilean Peso (CLP)	800.49	0.55%	2.94%	6.25%	6.48%
▲ Colombian Peso (COP)	3,420.65	0.17%	1.62%	4.38%	4.38%
▲ Mexican Peso (MXN)	18.84	0.35%	0.31%	-0.31%	-0.43%

*Legend: Variation 1D: 1 day; 5D: 5 days; 1M: 1 Month; YTD: Var%12/31/19 to date



Base: 01/11/19=100
Source: Bloomberg

Instrument	Currency	Price	Bid Yield (%)	Ask Yield (%)	Duration
PERU 4.125 08/25/2027	USD	114.194	2.10	2.07	6.49
PERU 7.35 07/21/25	USD	127.831	1.97	1.94	4.66
PERU 8.75 11/21/33	USD	169.034	2.72	2.71	9.43
PERU 6.55 03/14/37	USD	151.668	2.75	2.74	11.13
PERU 5.625 01/18/2050	USD	152.116	3.02	3.01	17.78
CHILE 2.25 10/30/22	USD	101.123	1.90	1.75	2.63
CHILE 3.875 08/05/20	USD	101.087	1.96	1.43	0.49
CHILE 3.625 10/30/2042	USD	111.564	2.94	2.91	15.95
COLOM 11.75 02/25/20	USD	100.908	-2.93	-4.26	0.06
COLOM 11.85 03/09/28	USD	163.332	3.02	2.95	6.79
COLOM 10.375 01/28/33	USD	163.676	4.06	4.00	8.54
COLOM 7.375 09/18/37	USD	147.431	3.70	3.68	11.16
COLOM 6.125 01/18/41	USD	135.147	3.71	3.69	13.21
MEX 4 10/02/23	USD	106.409	2.20	2.14	3.37
MEX5.55 01/45	USD	128.142	3.801	3.79	15



Source: Bloomberg

Equity	Exchange	Curr.	Price	▲%	Largest losses	Exchange	Curr.	Price	▼%
AMZN	Lima	USD	2028.70	10.84	BUENAVC1	Lima	PEN	42.00	-12.08
EXITO	Colomb.	COP	13800.00	9.87	ISA	Colomb.	COP	18800.00	-4.76
DNT	Lima	USD	0.03	6.67	DIS	Lima	USD	138.10	-4.76
ILC	Santia.	CLP	7299.90	5.84	TV	Lima	USD	0.15	-3.87

Per Turnover	Exchange	Amount (US\$)	Per Volume	Exchange	Volume
CHILE	Santia.	11,477,358	CHILE	Santia.	117,260,687
ECOPETROL	Colomb.	18,085,548	BSANTANDER	Santia.	109,800,847
FALABELLA	Santia.	13,030,581	VAPORES	Santia.	23,241,834
BSANTANDER	Santia.	5,414,422	ECOPETROL	Colomb.	19,502,919
CENCOSUD	Santia.	5,979,960	COLBUN	Santia.	13,820,697

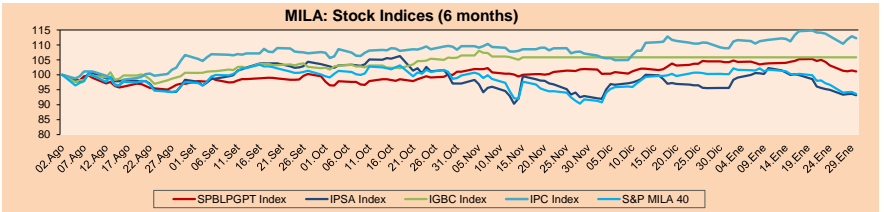
MILA

Peru: The General Index of the BVL ended today's session with a negative result of -0.40%. The actions that performed better on the day were Unión Cervecerías Perú Backus & Johnson (+ 4.20%) and Graña y Montero (+ 2.00%). Headline: Coronavirus: Minsa rules out that inpatients are infected with the virus

Chile: The IPSA index ended the day with a positive return + 0.46%. The actions with the best performance were Inversiones La Construcción (5.84%) and Engie Energía Chile SA (2.76%). Headline: Labor market deterioration: Salaried employment does not grow and own account soars.

Colombia: The COLCAP index had a negative result of 0.87%. The values with the worst results were Ecopetrol SA (-0.63%) and Bancolombia SA (-0.66%). Headline: Unemployment fell in December, but 2019 closed with an increase of 0.8 points.

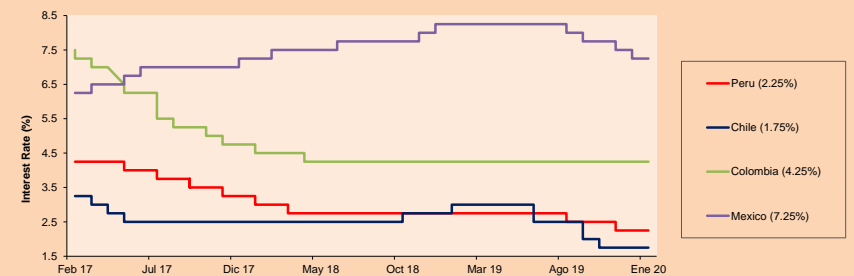
Mexico: The MEXBOL index closed the session with a negative result of -1.68%. The shares with the worst performance were América Móvil SAB (-2.24%) and Walmart de México SAB (-2.40%). Headline: Mexico's GDP contracts 0.1% in 2019; is its worst fall since 2009: Inegi



Base: 05/08/19=100
Source: Bloomberg

ETFs	Curr.	Close	1 D	5 D	30 D	YTD	Exchange
▼ iShares MSCI All Peru Caped Index Fund	USD	34.44	-1.18%	-5.70%	-7.04%	-7.04%	NYSE Arca
▼ iShares MSCI All Chile Caped Index Fund	USD	30.67	-0.52%	-4.31%	-7.98%	-7.98%	Cboe BZX
▼ Global X MSCI Colombia	USD	13.07	-0.46%	-3.26%	-5.97%	-5.97%	NYSE Arca
▼ iShares MSCI Mexico Capped	USD	45.86	-1.95%	-2.18%	1.84%	1.84%	NYSE Arca
▼ iShares MSCI Emerging Markets	USD	42.11	-2.02%	-5.58%	-6.15%	-6.15%	NYSE Arca
▼ Vanguard FTSE Emerging Markets	USD	42.01	-1.78%	-5.15%	-5.53%	-5.53%	NYSE Arca
▼ iShares Core MSCI Emerging Markets	USD	50.59	-1.98%	-5.56%	-5.90%	-5.90%	NYSE Arca
▼ iShares JP Morgan Emerging Markets Bonds	USD	55.45	-1.67%	-4.64%	-5.47%	-5.47%	Cboe BZX
▼ Morgan Stanley Emerging Markets Domestic	USD	6.9	-0.14%	-0.72%	-1.29%	-1.29%	New York

MILA: Reference Rate



Source: Bloomberg

Capital Market Laboratory Codinator: Economist Bruno Bellido Anicama
Collaboration: Alonso Butters, Jeanpiere León y Manuel Muñoz Najar
e-mail: pulsobursatil@ulima.edu.pe
facebook: www.facebook.com/pulsobursatil.ul
Phone number : 4376767 Annex: 35340



PULSO BURSÁTIL

WORLD

Main Indexes	Close	1 D*	5 D*	1 M*	YTD*	Market Cap. (US\$ Mill.)
▲ Dow Jones (USA)	981.48	1.11%	0.12%	-0.23%	0.11%	8,222,343
▲ Standard & Poor's 500 (USA)	3225.52	0.0084566	0.0061043	0.008835	0.0101059	27,795,094
▲ NASDAQ Composite (USA)	9,150.94	1.49%	1.62%	2.95%	3.51%	14,140,889
▲ STOXX EUROPE 600 (Europe)	410.71	0.33%	-0.49%	-1.50%	-0.91%	9,967,867
▲ DAX (Germany)	12,981.97	0.51%	-1.19%	-1.30%	-1.52%	1,084,397
▲ FTSE 100 (United Kingdom)	7,286.01	0.77%	-0.94%	-3.67%	-2.85%	1,471,519
▲ CAC 40 (France)	5,806.34	0.53%	0.44%	-3.43%	-2.36%	1,606,384
▲ IBEX 35 (Spain)	9,367.90	0.39%	0.41%	-2.51%	-1.51%	531,064
▼ MSCI AC Asia Pacific Index	165.78	-0.07%	-2.79%	-3.49%	-2.86%	19,935,435
▲ HANG SENG (Hong Kong)	26,312.63	0.17%	-5.56%	-7.36%	-6.50%	2,483,516
▼ SHANGHAI SEC Comp. (China)	2,976.53	-7.72%	-10.69%	-7.91%	-9.95%	4,505,563
▼ NIKKEI 225 (Japan)	23,205.18	-1.01%	-1.59%	-2.89%	-2.89%	3,500,824
▲ BOVESPA (Brazil)	113,760.60	1.08%	0.44%	-2.31%	-0.57%	836,826
▲ Merval (Argentina)	40,105.04	2.31%	3.67%	1.31%	-1.54%	22,682

*Legend: Variation 1D: 1 Day; 5D: 5 Days; 1M: 1 Month; YTD: Var. % 12/31/19 to date

Equity

Germany (Stocks from DAX Index)

Largest gains	Curr.	Price	▲%	Exchange	Largest losses	Curr.	Price	▼%	Exchange
MRK GY	EUR	115.9	-1.95	Xetra	ADS GY	EUR	285.8	-2.42	Xetra
DB1 GY	EUR	147.05	-1.04	Xetra	DAI GY	EUR	41,805	-2.30	Xetra
1COV GY	EUR	38.15	-2.28	Xetra	BMW GY	EUR	64.34	-1.86	Xetra
MTX GY	EUR	274.4	-1.44	Xetra	SIE GY	EUR	111.64	-1.85	Xetra

Europe (Stocks from STOXX EUROPE 600)

Largest gains	Curr.	Price	▲%	Exchange	Largest losses	Curr.	Price	▼%	Exchange
WRT1V FH	EUR	11,075	-3.23	Helsinki	SESG FP	EUR	11,105	5.56	EN Paris
VOLVB SS	SEK	165.3	0.85	Stockholm	GET FP	EUR	15.95	0.38	EN Paris
SCAB SS	SEK	98.52	3.63	Stockholm	SCORE SQ	EUR	14.405	0.91	Soc. Bot SIBE
NETW LN	GBP	608	1.16	Londres	HOT GY	EUR	104.6	-2.61	Xetra

Global Overview:

United States:

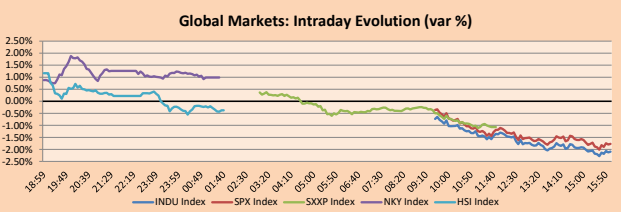
US markets ended today's session down due to concerns about the intensification of the deadly coronavirus virus. The National Health Commission of China confirmed on Friday that it had about 10,000 confirmed cases of coronavirus, and the number of deaths affected more than 210. Airlines such as American, United and Delta announced that they are slowing travel between China and the US. The main indices of the United States had the following Dow Jones Industrial results down -2.09%, NASDAQ down -1.59% and S&P 500 down -1.77%. In other corporate news, US shares fell almost 4%, while American Airlines and Delta fell 3.2% and 2.4%, respectively. Meanwhile, Amazon resisted the negative trend with a 7.4% increase after its quarterly results showed a better result than expected by analysts. Also, IBM shares increased up to 5% in the previous market after the company announced that Arvind Krishna became its tenth CEO. Companies with the best results of the day were Amazon.com Inc. (+7.38%) and Colgate-Palmolive Co. (+6.20%) by the S&P 500 index.

Europe:

The European markets ended their transactions in negative territory, amid reports on cases of coronavirus in the United Kingdom and their close departure from the European Union. Chris Whitty, medical director of England, announced that two cases of patients who had the Chinese virus in the country were confirmed and were being cared for by the National Health Service of the country. A sixth case was found in Germany, in the state of Bavaria. The death toll and infected patients rose to 213 and 9,692, respectively. On the other hand, Novartis, a French diagnostic firm, commented on the launch of a test to identify the specific strain of the coronavirus. This caused the shares of that company to rise. However, the markets in red worsened after official estimates of GDP growth reported that the eurozone economy grew below expectations in the fourth quarter of last year. In turn, core inflation slowed, which will have repercussions for the European Central Bank. Thus, the FTSE MIB -2.29%, AEX -1.58%, DAX -1.33%, FTSE 100 STOXX 600 -1.30%, CAC STOXX 600 -1.11% and STOXX 600 -1.07% ended down, among other indexes.

Asia:

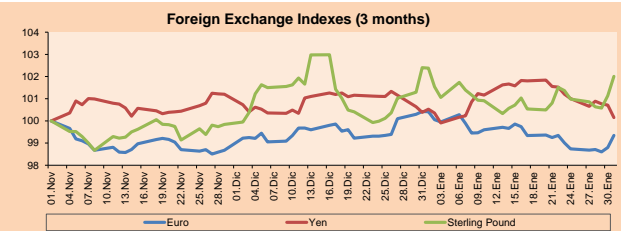
Asian markets closed today's session with mixed results, amid growing concerns about the Chinese coronavirus, which affected market sentiment. The WHO declared the spread of the Chinese virus as a global health emergency, with the number of deaths in China being 200. On the other hand, the official data regarding China's manufacturing activity was published, which remained stable in January regarding last month. The PMI index was 50, which was in line with the expectations of economists, according to Reuters. As is known, a value of 50 means that the activity was constant, neither in expansion nor in contraction. This result occurs in a context where small companies in the country have a shortage of capital and the commercial conflict between the US and China had strong effects on high-level imports, according to Andrew Collier, managing director of Orient Capital Research. He also indicated that the virus is added to this situation, so they must take into account when the consumer purchases will decrease as a result of all these. Thus, the Nikkei +0.99%, S & P / ASX 200 +0.13%, NZX 50 +0.44%; Hang Seng -0.52%, Kospi Composite -1.35% and Shenzhen -3.45%, among other indexes.



Source: Bloomberg

Currencies	Price	1 D*	5 D*	1 M*	YTD*
▲ Euro	1.1093	0.55%	0.62%	-1.06%	-1.07%
▲ Yen	108.3500	-0.56%	-0.85%	-0.38%	-0.24%
▲ Sterling Pound	1.3206	0.86%	1.02%	-0.36%	-0.38%
- Yuan	6.9426	0.00%	0.00%	-0.30%	-0.30%
▼ Hong Kong Dollar	7.7643	-0.03%	-0.10%	-0.34%	-0.35%
▲ Brazilian Real	4.2829	0.84%	2.40%	6.26%	6.26%
▲ Argentine Peso	60.3470	0.16%	0.42%	0.79%	0.79%

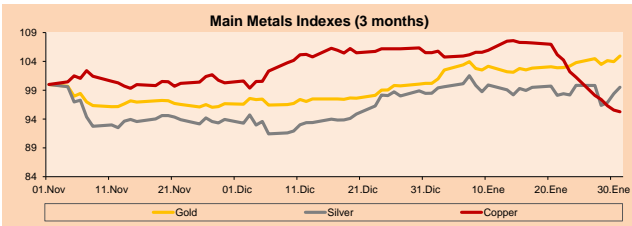
*Legend: Variation 1D: 1 Day; 5D: 5 Days; 1M: 1 Month; YTD: Var. % 12/31/19 to date



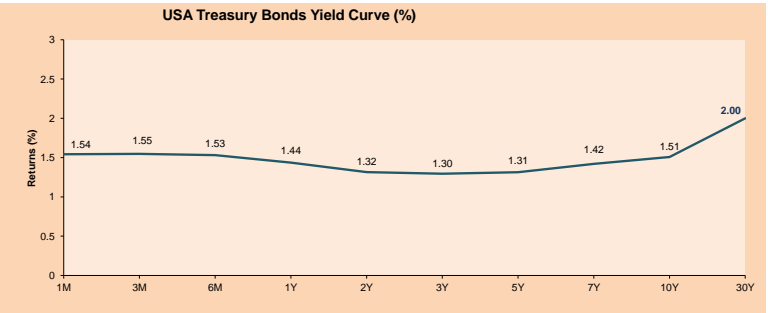
Base: 01/11/19=100
Source: Bloomberg

Commodities	Close	1 D*	5 D*	1 M*	YTD*
▲ Oro (US\$ Oz. T) (LME)	1,589.16	0.99%	1.12%	4.74%	4.74%
▲ Plata (US\$ Oz. T) (LME)	18.04	1.14%	-0.32%	1.05%	1.07%
▲ Cobres (US\$ TM) (LME)	5,551.25	-0.31%	-5.91%	-9.72%	-9.72%
▲ Zinc (US\$ TM) (LME)	2,212.00	0.33%	-5.99%	-2.96%	-2.96%
▼ Petróleo WTI (US\$ Barril) (NYM)	51.56	-1.11%	-4.85%	-15.16%	-15.16%
▲ Estano (US\$ TM) (LME)	16,425.00	2.43%	-2.29%	-4.38%	-4.38%
▲ Plomo (US\$ TM) (LME)	1,898.00	3.29%	-2.77%	-0.81%	-0.81%
▲ Azúcar #11 (US\$ Libra) (NYB-ICE)	14.61	0.14%	1.53%	8.87%	8.87%
▼ Cacao (US\$ TM) (NYB-ICE)	2,777.00	-0.86%	1.61%	9.33%	9.33%
▲ Café Arabica (US\$ TM) (NYB-ICE)	102.65	1.13%	-6.81%	-20.86%	-20.86%

*Legend: Variation 1D: 1 Day; 5D: 5 Days; 1M: 1 Month; YTD: Var. % 12/31/19 to date



Base: 01/11/19=100
Source: Bloomberg



Source: Bloomberg

Capital Market Laboratory Coordinator: Economist Bruno Bellido Anicama

Collaboration: Alonso Butters, Jeanniere León y Manuel Muñoz Najer

e-mail: pulsoburstil@ulima.edu.pe

facebook: www.facebook.com/pulsoburstilul

Phone number: 4376767 Annex: 35340

PULSO BURSÁTIL

LIMA

Stocks

Ticker	Currency	Price	1 D*	5 D*	30 D*	YTD*	Frequency	Volume (US\$)	Beta	Dividend Yield (%)	Price Earning	Market Cap. (M US\$)	Economic Sector*	Index Weight
▲ ALICORC1 PE**	S/.	9.10	0.08%	-1.30%	-1.09%	-1.09%	100.00%	2,105,680	0.66	2.64	17.50	2,291.35	Industrial	3.53%
▼ ATACOCB1 PE**	S/.	0.17	-2.37%	-17.50%	0.00%	0.00%	100.00%	8,631	#N/A N/A	0.00	-	46.06	Mining	1.02%
▲ BACKJUS1 PE**	S/.	31.99	4.20%	0.60%	12.25%	12.25%	85.00%	30,425	0.39	4.65	9.43	12,760.81	Industrial	0.82%
▼ BAP PE**	US\$	206.80	-1.71%	-4.62%	-2.76%	-2.76%	95.00%	389,620	1.26	4.06	-	16,494.67	Diverse	5.82%
▼ BVN PE**	US\$	12.80	-0.31%	-2.88%	-16.34%	-16.34%	100.00%	324,853	1.21	0.65	-	3,528.12	Mining	5.88%
▼ CASAGRC1 PE**	S/.	2.91	-3.00%	-3.00%	-3.96%	-3.96%	100.00%	9,660	0.70	0.43	17.08	72.42	Agricultural	1.31%
▼ BBVAC1 PE**	S/.	3.40	-1.45%	-1.16%	-0.87%	-0.87%	100.00%	137,460	0.46	4.06	12.98	5,911.46	Finance	2.85%
▲ CORAREI1 PE**	S/.	0.91	1.11%	1.11%	0.00%	0.00%	100.00%	34,464	0.75	7.22	4.42	348.97	Industrial	1.72%
- CPACASC1 PE**	S/.	6.14	0.00%	1.15%	-0.16%	-0.16%	100.00%	20,819	0.59	5.86	33.89	773.94	Industrial	2.38%
- CVERDEC1 PE**	US\$	18.50	0.00%	-1.60%	-4.15%	-4.15%	95.00%	51,306	1.04	0.00	-	6,476.04	Mining	5.25%
- ENGEPEC1 PE**	S/.	2.38	-0.83%	-0.83%	3.48%	3.48%	55.00%	24,138	0.58	3.75	12.94	1,995.99	Public Services	1.44%
▼ ENDISPC1**	S/.	7.20	0.00%	0.00%	-2.04%	-2.04%	50.00%	1,690	0.47	0.00	11.28	1,358.29	Public Services	0.98%
▼ FERREYC1 PE**	S/.	2.00	-2.44%	-4.76%	-8.68%	-8.68%	100.00%	502,508	0.87	5.12	7.51	576.49	Diverse	4.90%
▲ GRAMONC1 PE**	S/.	1.53	2.00%	-3.77%	-10.00%	-10.00%	100.00%	218,460	1.22	0.00	-	394.11	Diverse	4.05%
▲ IFS PE**	US\$	42.15	1.08%	-4.31%	3.06%	3.06%	100.00%	133,794	0.93	4.15	12.34	4,866.12	Diverse	7.22%
▼ INRETC1 PE**	US\$	37.60	-1.57%	-2.46%	4.44%	4.44%	100.00%	3,829,391	0.60	0.91	30.95	3,865.56	Diverse	5.28%
▼ LUSURC1 PE**	S/.	24.00	0.00%	-9.26%	-6.80%	-6.80%	100.00%	745,546	0.75	5.00	19.21	3,452.64	Public Services	1.81%
▲ MINSUR1 PE**	S/.	1.65	0.61%	-6.78%	5.77%	5.77%	100.00%	4,875	1.11	4.59	7.14	1,405.34	Mining	3.09%
▲ PML PE**	US\$	0.07	-2.99%	-8.45%	16.07%	16.07%	75.00%	8,270	1.14	0.00	-	17.15	Mining	2.12%
▼ RELAPAC1 PE**	S/.	0.12	0.00%	-0.83%	-3.25%	-3.25%	90.00%	20,039	0.89	0.00	-	292.47	Industrial	2.12%
▼ SCCO PE**	US\$	38.00	-0.26%	-4.23%	-10.44%	-10.44%	90.00%	232,339	1.41	5.38	20.00	29,376.24	Mining	2.14%
▲ SIDERC1 PE**	S/.	0.88	1.15%	0.00%	-1.12%	-1.12%	100.00%	41,259	1.33	11.60	10.00	319.23	Industrial	1.43%
▼ TV PE**	US\$	0.15	-3.87%	-6.88%	-13.87%	-13.87%	95.00%	26,199	2.12	0.00	-	120.22	Mining	2.93%
▼ UNACEMC1 PE**	S/.	1.90	-1.04%	-2.06%	-5.00%	-5.00%	100.00%	39,552	0.65	2.74	10.14	1,020.54	Industrial	3.00%
▼ VOLCABC1 PE**	S/.	0.48	-1.83%	-13.93%	8.31%	8.31%	100.00%	196,322	1.45	0.00	-	2,032.03	Mining	5.90%
- NEXAPEC1 PE**	S/.	3.40	0.00%	-3.68%	-1.45%	-1.45%	65.00%	1,708	0.84	0.00	32.50	1,328.98	Mining	1.56%

Quantity of shares: 26

Source: Bloomberg, Economía

* Bloomberg Industry Classification System

** PER is used in the stock market and original currency of the instrument

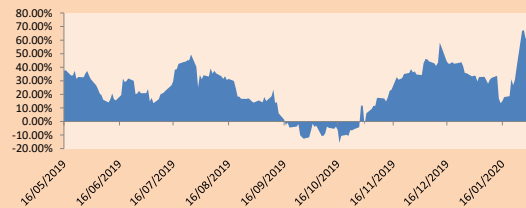
*Legend: Variation 1D: 1 Day; 5D: 5 Days; 1M: 1 Month; YTD: Var.% 12/31/19 to date

Sectorial Indexes

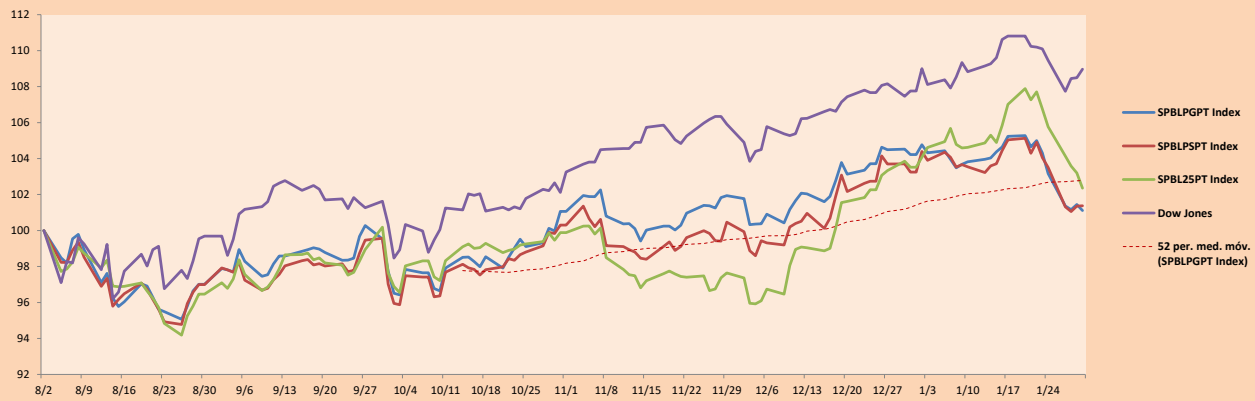
	Close	1D*	5D*	30D*	YTD*	Beta
▲ Mining Index	276.35	0.12%	-2.68%	-9.29%	-9.29%	1.37
▲ Consumer Index	1,190.35	-0.57%	-0.70%	4.40%	4.40%	0.37
▼ Industrial Index	199.02	-0.86%	-2.44%	-5.73%	-5.73%	0.64
▼ Banking and Financial Index	1,178.08	-0.98%	-2.70%	-0.13%	-0.13%	1.22
▼ Construction Index	216.50	-0.18%	-1.44%	-4.47%	-4.47%	0.55
▲ Services Index	636.77	-0.37%	-3.69%	-2.26%	-2.26%	0.31
▲ Juniors Index	14.53	0.35%	1.82%	0.41%	0.41%	0.14
▼ Electric Index	621.64	-0.37%	-3.69%	-2.26%	-2.26%	0.31

*Legend: Variation 1D: 1 Day; 5D: 5 Days; 1M: 1 Month; YTD: Var.% 12/31/19 to date

Correlation of Returns of Mining Index against Metallic Index of London (3 months)



Indexes (6 months)



Base: 02/08/19=100
Source: Bloomberg

Capital Market Laboratory Coordinator: Economist Bruno Bellido Anicama
Collaboration: Alonso Butter, Jeanpierre León y Manuel Muñoz Najar
e-mail: pulsobursatil@ulima.edu.pe
facebook: www.facebook.com/pulsobursatil.ul
Phone number : 4376767 Annex: 35340

The content of this document is just for informational purposes. The information and opinions expressed should not be consider as recommendations for future decisions. Under any circumstances, the Capital Market Laboratory of University of Lima will be responsible for the use of the statements in this document.

PULSO BURSÁTIL

SOVEREIGN RATING

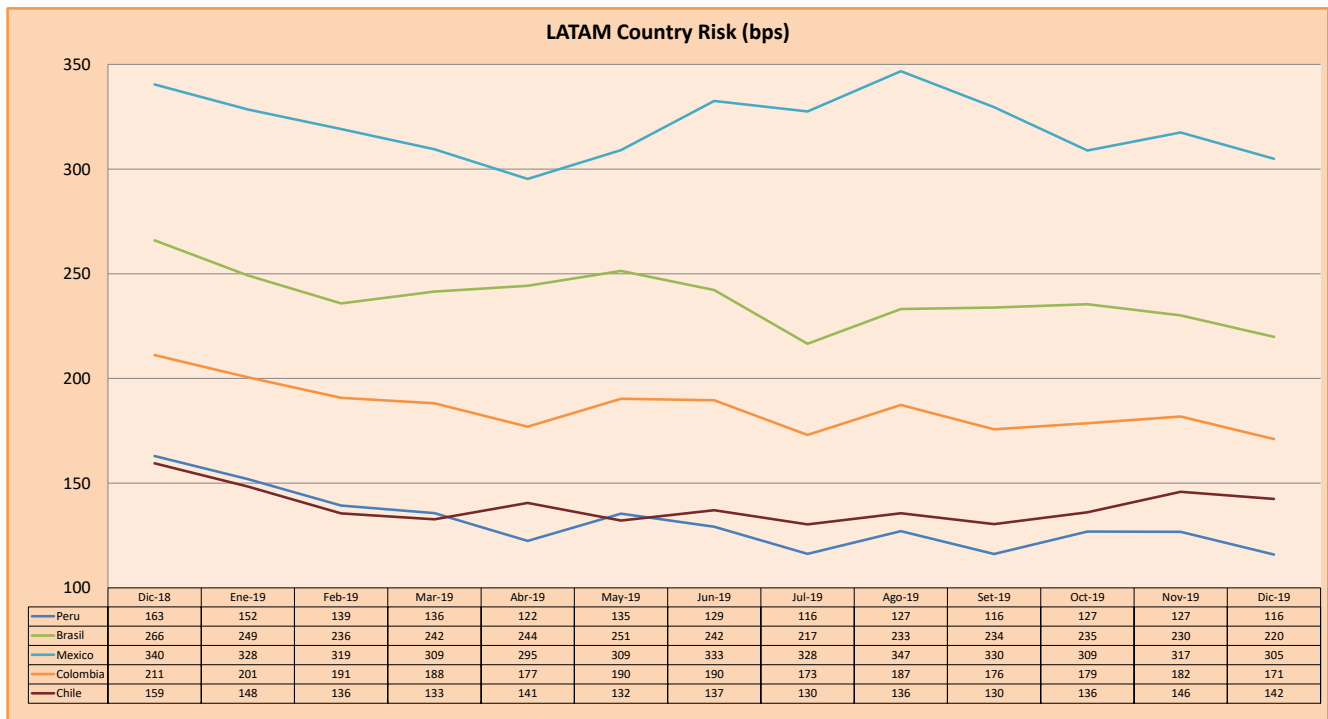
RISK RATINGS

Moody's	S&P	Fitch	
Aaa	AAA	AAA	Prime
Aa1	AA+	AA+	High credit quality
Aa2	AA	AA	
Aa3	AA-	AA-	
A1	A+	A+	Medium-high grade, with low credit risk
A2	A	A	
A3	A-	A-	
Baa1	BBB+	BBB+	Moderate Credit Risk
Baa2	BBB	BBB	
Baa3	BBB-	BBB-	
Ba1	BB+	BB+	It has speculative elements and it is subject to substantial credit risk
Ba2	BB	BB	
Ba3	BB-	BB-	
B1	B+	B+	It is considered speculative and it has high credit risk
B2	B	B	
B3	B-	B-	
Caa1	CCC+	CCC	Bad credit conditions and it is subject to high credit risk
Caa2	CCC		
Caa3	CCC-		
Ca	C	DDD DD D	Very close to default or in default
C	D		

Source: Bloomberg

Latin America Credit Rating			
Country	Rating Agency		
	Moody's	Fitch	S&P
Peru	A3	BBB+	BBB+
Mexico	A3	BBB	BBB+
Venezuela	C	WD	SD
Brazil	Ba2	BB-	BB-
Colombia	Baa2	BBB	BBB-
Chile	A1	A	A+
Argentina	Caa2 ^-	CC	CCC-
Panama	Baa1	BBB	BBB+

Source: Bloomberg



Source: BCRP

Capital Market Laboratory Coordinator: Economist Bruno Bellido Anicama
 Support: Alonso Butters, Jeanpierre León y Manuel Muñoz Najjar
 e-mail: pulsobursatil@ulima.edu.pe
 facebook: www.facebook.com/pulsobursatil.ul
 Phone number : 4376767 Annex: 35340

The content of this document is just for informational purposes. The information and opinions expressed should not be considered as recommendations for future decisions. Under any circumstances, the Capital Market Laboratory of University of Lima will be responsible for the use of the statements in this document.