

# PULSO BURSÁTIL

Lima, February 12, 2020

## MILA

Main Indexes	Close	1 D*	5 D*	1 M*	YTD*	Market Cap. (US\$ bill)*
▲ IPSA (Chile)	4,667.90	0.16%	-0.16%	-6.57%	-0.04%	119.94
▲ IGPA (Chile)	23,402.04	0.20%	-0.02%	-5.87%	0.04%	154.19
▼ COLSC (Colombia)	1,002.95	-0.04%	-0.14%	0.78%	2.55%	9.71
▲ COLCAP (Colombia)	1,662.96	1.08%	0.40%	0.49%	0.03%	104.41
▲ S&P/BVL (Perú)*	20,053.28	0.47%	-1.67%	-1.93%	-2.30%	94.46
▲ S&P/BVL SEL (Perú)	524.34	0.13%	-1.68%	-1.61%	-1.33%	72.95
▼ S&P/BVL LIMA 25	25,588.88	-0.93%	-2.23%	-1.69%	-0.64%	87.90
▲ IPC (México)	45,346.95	0.71%	1.26%	1.54%	4.15%	298.12
▲ S&P MILA 40	570.19	0.96%	-2.53%	-6.81%	-5.45%	240.26

\* Market Cap. from last session \* Legend: Variation 1D: 1 day; 5D: 5 days; 1M: 1 Month; YTD: Var%12/02/20 to date

### Equity

Largest gains	Exchange	Curr.	Price	▲%	Largest losses	Exchange	Curr.	Price	▼%
TELEFBC1	Lima	PEN	1.04	4.00	RELAPAC1	Lima	PEN	0.11	-6.96
BAP	Lima	USD	210.50	2.98	ATACOBC1	Lima	PEN	0.18	-6.42
ECL	Santia.	CLP	1132.50	2.96	VOLCABC1	Lima	PEN	0.52	-5.45
SQM-B	Santia.	CLP	24501.00	2.95	CVERDEC1	Lima	USD	18.45	-2.89

### Per Turnover

	Exchange	Amount (US\$)
CENCOSUD	Santia.	13,385,282
SQM-B	Santia.	11,160,536
BSANTANDER	Santia.	8,747,462
ECOPETROL	Colomb.	8,494,451
COPEC	Santia.	7,516,995

### Per Volume

	Exchange	Volume
BSANTANDER	Santia.	172,941,286
NORTEGRAN	Santia.	73,140,441
CHILE	Santia.	42,791,342
COLBUN	Santia.	13,335,726
CENCOSUD	Santia.	10,280,126

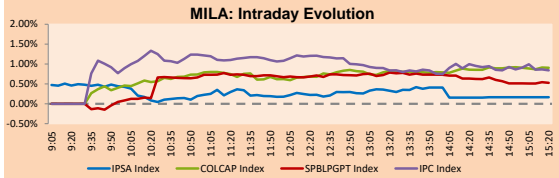
### MILA

**Peru:** The General Index of the BVL ended today's session with a positive result of +0.51%. The index maintains an annual cumulative negative trend of -2.27% in local currency, while the adjusted yield in dollars amounts to -4.35%. Then, the S&P / BVL Peru SEL varied by +0.15% while the S&P / BVL LIMA 25 by -0.92%. The PEN spot reached S/ 3.3785. Headline: OPEO reduces its forecast of oil demand by 19% for the coronavirus

**Chile:** The IPSA index ended the day with a positive return of +0.16%. The sectors with the best performances in the day were Materials (+2.48%) and Energy (+1.98%). The actions with the best performances were Engie Energía Chile SA (+2.96%) and Sociedad Química y Minera (+2.95%). Headline: Government adopts measures to facilitate trade with China and redirect shipments.

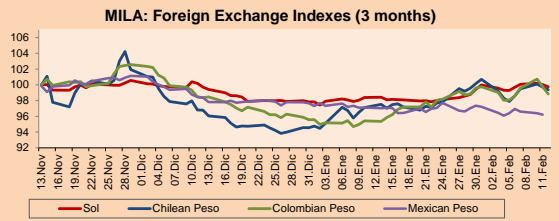
**Colombia:** The COLCAP index had a positive result of +0.87%. The sectors most affected in the day were Energy (+2.57%) and Industrial (+1.96%). The values with the best results were Ecopetrol SA (+2.58%) and Canacol Energy Ltd (+2.36%). Headline: The US withdraws Argentina, Brazil and Colombia from the list of developing countries.

**Mexico:** The MEXBOL index ended the day with a positive return +0.69%. The sectors with the best performance were Communications Services (+5.01%) and Finance (+1.35%). The actions with the best performances were América Móvil SAB (+5.92%) and Regional SAB (+2.97%). Headline: Mexican industry fell 1.8% in 2019 and construction does not leave the red numbers.



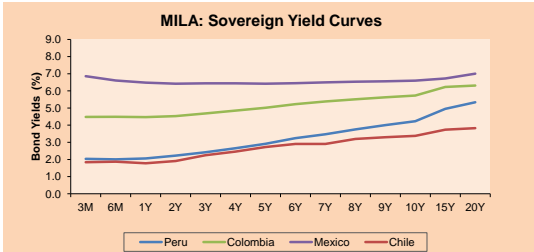
Currencies	Price	1 D*	5 D*	30 D*	YTD*
▼ Sol (PEN)	3,3786	-0.27%	0.49%	1.36%	2.00%
▼ Chilean Peso (CLP)	790.07	-0.32%	1.52%	1.90%	5.10%
▼ Colombian Peso (COP)	3,388.63	-0.93%	0.78%	3.65%	3.40%
▼ Mexican Peso (MXN)	18.62	-0.17%	0.14%	-0.92%	-1.59%

\* Legend: Variation 1D: 1 day; 5D: 5 days; 1M: 1 Month; YTD: Var%12/02/20 to date

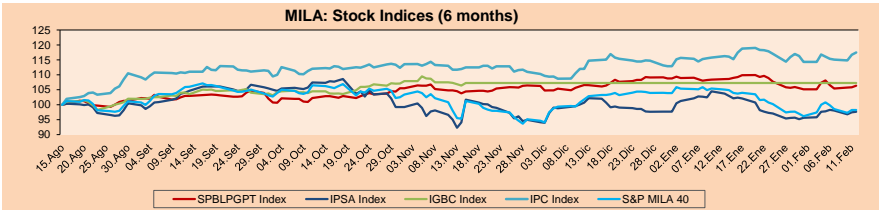


Base: 13/11/19=100  
Source: Bloomberg

Instrument	Currency	Price	Bid Yield (%)	Ask Yield (%)	Duration
PERU 4.125 08/25/2027	USD	113.799	2.15	2.11	6.46
PERU 7.35 07/21/25	USD	127.422	2.03	1.97	4.63
PERU 8.75 11/21/33	USD	168.452	2.75	2.74	9.39
PERU 6.55 03/14/37	USD	150.721	2.80	2.79	11.08
PERU 5.625 10/18/2050	USD	151.108	3.05	3.05	17.70
CHILE 2.25 10/30/22	USD	101.018	1.93	1.80	2.60
CHILE 3.875 08/05/20	USD	101.006	2.05	1.43	0.47
CHILE 3.625 10/30/2042	USD	110.216	3.01	2.99	15.89
COLOM 11.75 02/25/20	USD	100.402	2.05	-4.72	0.03
COLOM 11.85 03/09/28	USD	163.102	3.02	2.96	5.77
COLOM 10.375 01/28/33	USD	162.111	4.19	4.08	8.50
COLOM 7.375 09/18/37	USD	147.81	3.68	3.65	11.15
COLOM 6.125 01/18/41	USD	134.94	3.72	3.70	13.18
MEX 4 10/02/23	USD	106.582	2.15	2.07	3.34
MEX5.55 01/45	USD	128.452	3.783	3.773	14.98



Source: Bloomberg

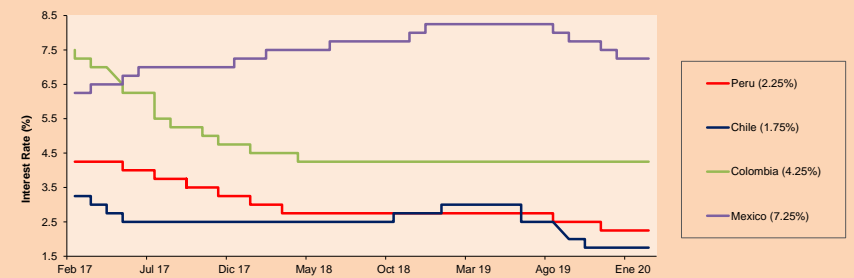


Base: 16/08/19=100  
Source: Bloomberg

### ETFs

	Curr.	Close	1 D	5 D	30 D	YTD	Exchange
▲ iShares MSCI All Peru Caped Index Fund	USD	34.78	0.67%	-1.75%	-4.79%	-6.13%	NYSE Arca
▲ iShares MSCI All Chile Caped Index Fund	USD	31.61	0.70%	-1.86%	-7.95%	-5.16%	Cboe BZX
▲ Global X MSCI Colombia	USD	13.49	1.43%	-0.07%	-2.88%	-2.95%	NYSE Arca
▲ iShares MSCI Mexico Capped	USD	47.86	1.42%	1.51%	2.46%	6.28%	NYSE Arca
▲ iShares MSCI Emerging Markets	USD	44.77	1.36%	1.91%	-3.30%	-0.22%	NYSE Arca
▲ Vanguard FTSE Emerging Markets	USD	44.33	1.28%	1.77%	-3.40%	-0.31%	NYSE Arca
▲ iShares Core MSCI Emerging Markets	USD	53.65	1.26%	1.71%	-3.23%	-0.20%	NYSE Arca
▲ iShares JP Morgan Emerging Markets Bonds	USD	57.23	0.62%	0.69%	-3.88%	-2.44%	Cboe BZX
▲ Morgan Stanley Emerging Markets Domestic	USD	6.95	0.29%	-0.14%	-0.86%	-0.57%	New York

### MILA: Reference Rate



Source: Bloomberg

Capital Market Laboratory Coordinador: Economist Bruno Bellido Anicama  
Collaboration: Alonso Butters, Luis Davila, Jeanpiere León y Manuel Muñoz Najar  
e-mail: pulsobursatil@ulima.edu.pe  
facebook: www.facebook.com/pulsobursatil.ul  
Phone number : 4376767 Annex: 35340

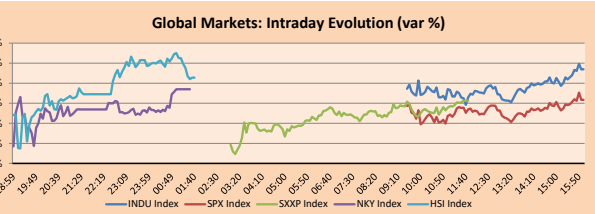
PULSO BURSÁTIL

WORLD

Main Indexes table with columns: Index Name, Close, 1D, 5D, 1M, YTD, Market Cap. Includes Dow Jones, S&P 500, NASDAQ Composite, etc.

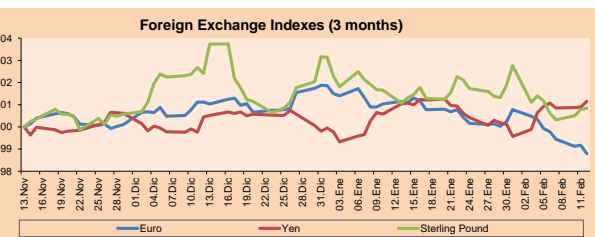
Equity

Equity performance table for Germany and Europe (STOXX EUROPE 600) with columns: Stock Name, Curr. Price, % Change, Exchange, Largest Losses, etc.



Source: Bloomberg

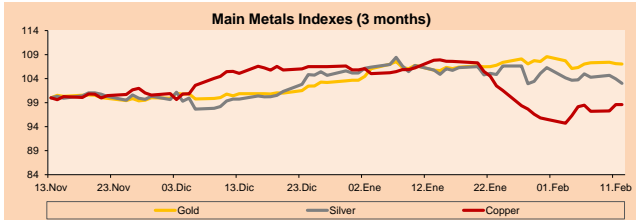
Currencies table with columns: Currency, Price, 1D, 5D, 1M, YTD. Includes Euro, Yen, Sterling Pound, Yuan, etc.



Base: 13/11/19=100

Source: Bloomberg

Commodities table with columns: Commodity, Close, 1D, 5D, 1M, YTD. Includes Oro, Plata, Cobres, Zinc, etc.



Base: 13/11/19=100

Source: Bloomberg

Global Overview:

United States:

The US markets will end today's session on the rise due to the Fed report, announced by President Jerome Powell, in which reiterated his confidence in the market and the increase in the values of technological stocks.

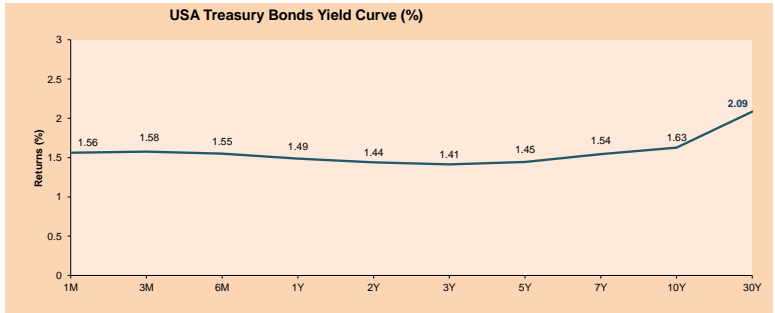
Europe:

European markets ended their transactions with positive variations, amid new corporate profits and updates on the coronavirus. The Chinese virus continues to cause concern, after the Chinese National Health Commission reported 2015 new cases.

Asia:

Asian markets closed the session with positive results. The results of the containment policy for the outbreak of the coronavirus manifested itself as an increase in confidence of investors, who reacted positively to the comments of Jerome Powell, president of the Fed, at the meeting with the US parliament last Tuesday.

ETFs table with columns: Name, Curr., Close, 1D, 5D, 30D, YTD, Exchange. Lists various funds like SPDR S&P 500, IShares MSCI Emerging Market, etc.



Source: Bloomberg

Capital Market Laboratory Coordinator: Economist Bruno Bellido Anicama
Collaboration: Alonso Butters, Luis Davila, Jeanyri León y Manuel Muñoz Najar
e-mail: pulsobursatil@ulima.edu.pe
facebook: www.facebook.com/pulsobursatil.ul
Phone number: 4376767 Anexas: 35340

# PULSO BURSÁTIL

## LIMA

### Stocks

Ticker	Currency	Price	1 D*	5 D*	30 D*	YTD*	Frequency	Volume (US\$)	Beta	Dividend Yield (%)	Price Earning	Market Cap. (M US\$)	Economic Sector*	Index Weight
▼ ALICORC1 PE**	S/.	9.15	-0.04%	0.00%	2.58%	-0.54%	100.00%	634,137	0.63	2.62	17.59	2,308.16	Industrial	3.53%
▼ ATACOCB1 PE**	S/.	0.18	-6.42%	-6.42%	-1.13%	6.06%	80.00%	19,283	#N/A N/A	0.00	-	48.94	Mining	1.02%
- BACKJUS1 PE**	S/.	30.71	0.00%	-3.12%	-4.66%	7.75%	75.00%	16,934	0.39	4.84	9.06	12,273.06	Industrial	0.82%
▲ BAP PE**	US\$	210.50	2.98%	-2.35%	-0.24%	-1.03%	95.00%	1,429,824	1.27	3.99	-	16,789.79	Diverse	5.82%
▲ BVN PE**	US\$	12.67	1.36%	-2.54%	-6.15%	-17.19%	100.00%	1,133,440	1.22	0.66	-	3,492.29	Mining	5.88%
▲ CASAGRC1 PE**	S/.	2.91	0.34%	-3.00%	-3.00%	-3.96%	100.00%	16,424	0.82	0.43	17.08	72.55	Agricultural	1.31%
▼ BBVAC1 PE**	S/.	3.35	-1.18%	-2.90%	-1.47%	-2.33%	100.00%	111,657	0.48	4.12	12.79	5,835.39	Finance	2.85%
▼ CORAREI1 PE**	S/.	0.90	-1.10%	-3.23%	-2.17%	-1.10%	100.00%	38,657	0.90	7.31	4.37	360.18	Industrial	1.72%
▼ CPACASC1 PE**	S/.	6.15	-1.13%	-0.49%	0.82%	0.00%	95.00%	85,524	0.55	5.85	34.17	776.64	Industrial	2.38%
▼ CVERDEC1 PE**	US\$	18.45	-2.89%	-2.95%	-11.93%	-4.40%	90.00%	51,142	1.07	2.32	-	6,458.53	Mining	5.25%
- ENGEPEC1 PE**	S/.	2.39	0.00%	0.00%	3.02%	3.91%	50.00%	98,111	0.55	3.73	12.99	2,008.11	Public Services	1.44%
- ENDISPC1**	S/.	6.65	-0.75%	-1.63%	-6.99%	-9.52%	60.00%	31,317	0.45	3.46	10.42	1,256.87	Public Services	0.98%
▲ FERREYC1 PE**	S/.	2.07	0.98%	-1.90%	-1.43%	-5.48%	100.00%	209,954	0.95	4.95	7.77	597.78	Diverse	4.90%
▼ GRAMONC1 PE**	S/.	1.70	-0.58%	-8.11%	0.00%	0.00%	100.00%	261,969	1.58	0.00	-	438.72	Diverse	4.05%
▲ IFS PE**	US\$	41.71	1.24%	-1.74%	5.59%	1.98%	95.00%	86,295	0.80	4.20	12.25	4,815.32	Diverse	7.22%
- INRETC1 PE**	US\$	37.90	-0.52%	-0.26%	-2.07%	5.28%	100.00%	1,409,880	0.60	0.90	31.19	3,896.40	Diverse	5.28%
- LUSURC1 PE**	S/.	25.50	0.00%	-1.92%	-1.92%	-0.97%	100.00%	72,441	0.91	4.71	20.41	3,675.27	Public Services	1.81%
- MINSUR1 PE**	S/.	1.65	0.00%	0.00%	5.10%	5.77%	100.00%	83,613	1.11	4.59	7.14	1,407.97	Mining	3.09%
- PML PE**	US\$	0.07	0.00%	3.03%	0.00%	21.43%	75.00%	5,429	1.12	0.00	-	17.94	Mining	2.12%
▼ RELAPAC1 PE**	S/.	0.11	-6.96%	-6.96%	-12.30%	-13.01%	80.00%	14,041	1.04	0.00	-	263.47	Industrial	2.12%
- SCCO PE**	US\$	39.38	0.15%	-2.16%	-10.97%	-7.19%	85.00%	18,099	1.40	4.06	20.73	30,443.06	Mining	2.14%
▲ SIDERC1 PE**	S/.	0.89	0.00%	-3.26%	-1.11%	0.00%	100.00%	22,462	1.35	11.47	10.11	323.46	Industrial	1.43%
▼ TV PE**	US\$	0.14	-1.43%	-8.00%	-23.76%	-20.23%	100.00%	31,278	2.09	0.00	-	111.35	Mining	2.93%
▼ UNACEMC1 PE**	S/.	1.97	-0.51%	-1.01%	1.03%	-1.50%	95.00%	65,589	0.73	2.64	9.99	1,060.12	Industrial	3.00%
▼ VOLCABC1 PE**	S/.	0.52	-5.45%	-3.70%	0.00%	16.85%	100.00%	659,418	1.81	0.00	-	2,058.46	Mining	5.90%
- NEXAPEC1 PE**	S/.	3.50	0.00%	0.00%	1.45%	1.45%	60.00%	1,596	0.78	14.83	33.47	1,370.23	Mining	1.56%

Quantity of shares: 26

Source: Bloomberg, Economía

\* Bloomberg Industry Classification System

\*\* PER is used in the stock market and original currency of the instrument

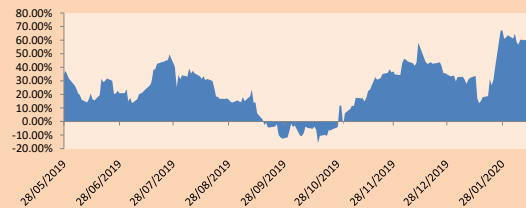
\*Legend: Variation 1D: 1 Day; 5D: 5 Days; 1M: 1 Month; YTD: Var.% 12/31/19 to date

### Sectorial Indexes

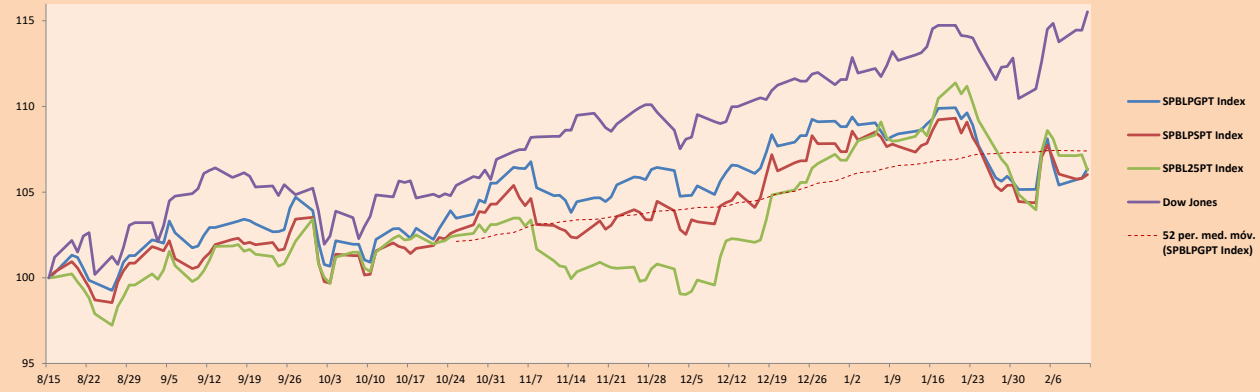
	Close	1D*	5D*	30D*	YTD*	Beta
▼ Mining Index	280.02	-0.12%	-1.92%	-6.91%	-8.09%	1.38
▼ Consumer Index	1,187.14	-0.75%	-0.49%	-0.21%	4.12%	0.30
▲ Industrial Index	206.32	-0.25%	-2.40%	-0.23%	-2.27%	0.72
▲ Banking and Financial Index	1,192.77	2.42%	-1.85%	1.51%	1.12%	1.23
▼ Construction Index	225.12	-0.65%	-2.54%	0.49%	-0.67%	0.62
▼ Services Index	641.25	-0.51%	-1.31%	-1.69%	-1.57%	0.39
▼ Juniors Index	14.74	-0.27%	1.59%	-1.47%	1.87%	-0.09
▼ Electric Index	626.02	-0.51%	-1.31%	-1.69%	-1.58%	0.39

\*Legend: Variation 1D: 1 Day; 5D: 5 Days; 1M: 1 Month; YTD: Var.% 12/31/19 to date

### Correlation of Returns of Mining Index against Metallic Index of London (3 months)



### Indexes (6 months)



Base: 15/08/19=100  
Source: Bloomberg

Capital Market Laboratory Coordinator: Economist Bruno Bellido Anicama  
Collaboration: Alonso Butter, Luis Davila, Jeanpiere León y Manuel Muñoz Najar  
e-mail: pulsobursatil@ulima.edu.pe  
facebook: www.facebook.com/pulsobursatil.ul  
Phone number : 4376767 Annex: 35340

The content of this document is just for informational purposes. The information and opinions expressed should not be consider as recommendations for future decisions. Under any circumstances, the Capital Market Laboratory of University of Lima will be responsible for the use of the statements in this document.

# PULSO BURSÁTIL

## SOVEREIGN RATING

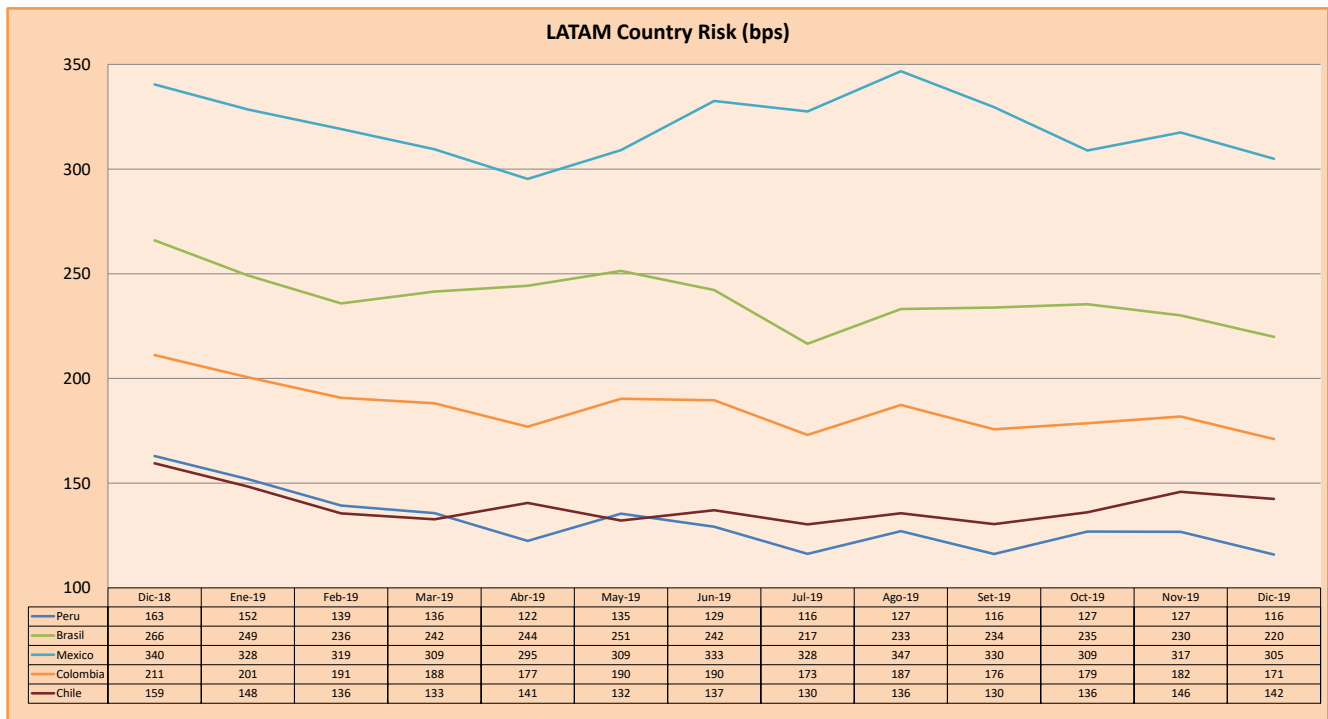
### RISK RATINGS

Moody's	S&P	Fitch	
Aaa	AAA	AAA	Prime
Aa1	AA+	AA+	High credit quality
Aa2	AA	AA	
Aa3	AA-	AA-	
A1	A+	A+	Medium-high grade, with low credit risk
A2	A	A	
A3	A-	A-	
Baa1	BBB+	BBB+	Moderate Credit Risk
Baa2	BBB	BBB	
Baa3	BBB-	BBB-	
Ba1	BB+	BB+	It has speculative elements and it is subject to substantial credit risk
Ba2	BB	BB	
Ba3	BB-	BB-	
B1	B+	B+	It is considered speculative and it has high credit risk
B2	B	B	
B3	B-	B-	
Caa1	CCC+	CCC	Bad credit conditions and it is subject to high credit risk
Caa2	CCC		
Caa3	CCC-		
Ca	C	DDD DD D	Very close to default or in default
C	D		

Source: Bloomberg

Latin America Credit Rating			
Country	Rating Agency		
	Moody's	Fitch	S&P
Peru	A3	BBB+	BBB+
Mexico	A3	BBB	BBB+
Venezuela	C	WD	SD
Brazil	Ba2	BB-	BB-
Colombia	Baa2	BBB	BBB-
Chile	A1	A	A+
Argentina	Caa2 ^-	CC	CCC-
Panama	Baa1	BBB	BBB+

Source: Bloomberg



Source: BCRP

Capital Market Laboratory Coordinator: Economist Bruno Bellido Anicama  
 Support: Alonso Butters, Luis Davila, Jeanpierre León y Manuel Muñoz Najar  
 e-mail: pulsobursatil@ulima.edu.pe  
 facebook: www.facebook.com/pulsobursatil.ul  
 Phone number : 4376767 Annex: 35340

The content of this document is just for informational purposes. The information and opinions expressed should not be considered as recommendations for future decisions. Under any circumstances, the Capital Market Laboratory of University of Lima will be responsible for the use of the statements in this document.