

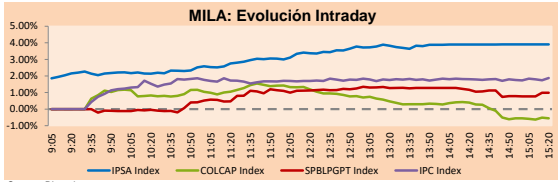
PULSO BURSÁTIL

Lima, March 2, 2020

MILA

Main Indexes	Close	1 D	5 D	1 M	YTD	Cap. Burs. (US\$ bill)
▲ IPISA (Chile)	4,283.63	3.91%	-3.32%	-6.31%	-8.27%	102.65
▲ IGPA (Chile)	21,463.73	3.45%	-3.50%	-6.51%	-8.25%	133.00
▲ COLSC (Colombia)	1,001.06	0.54%	0.62%	1.99%	2.35%	9.54
▼ COLCAP (Colombia)	1,536.48	-0.85%	-5.31%	-5.38%	-7.58%	96.27
▲ S&P/BVL (Perú)*	18,555.85	1.60%	-3.34%	-6.45%	-9.60%	83.87
▲ S&P/BVL SEL (Perú)	490.95	1.44%	-3.86%	-5.04%	-7.62%	65.14
▲ S&P/BVL LIMA 25	24,033.44	1.57%	-3.93%	-4.90%	-6.68%	78.07
▲ IPC (México)	42,167.24	2.04%	-3.77%	-4.40%	-3.16%	264.84
▼ S&P MILA 40	500.31	-2.83%	-7.67%	-10.37%	-17.04%	210.21

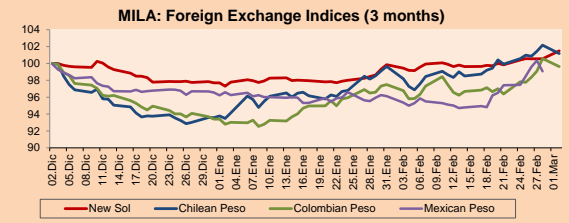
*Legend: Variation 1D: 1 day; 5D: 5 days; 1M: 1 Month; YTD: Var% 12/31/19 to date



Source: Bloomberg

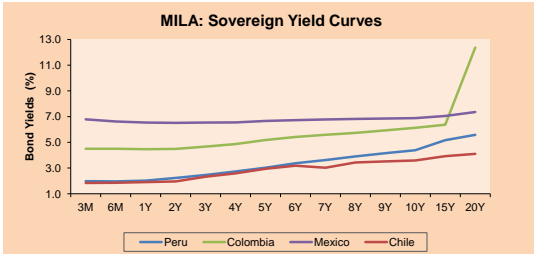
Currency	Price	1D*	5D*	30 D*	YTD*
▼ New Sol (PEN)	3,441.12	-0.36%	1.06%	1.66%	3.89%
▼ Chilean Peso (CLP)	812.78	-0.97%	0.61%	1.54%	8.12%
▼ Colombian Peso (COP)	3,495.55	-0.95%	1.84%	2.19%	6.66%
▼ Mexican Peso (MXN)	19.40	-1.26%	1.71%	2.93%	2.48%

*Legend: Variation 1D: 1 day; 5D: 5 days; 1M: 1 Month; YTD: Var% 12/31/19 to date



Base: 02/12/19=100
Source: Bloomberg

Fixed Income	Bid Yield (%)	Ask Yield (%)	Duration
PERU 4.125 08/25/2027	USD 114.69	2.00	6.53
PERU 7.35 07/21/25	USD 128.043	1.86	4.58
PERU 8.75 11/21/33	USD 170.685	2.60	9.36
PERU 6.55 03/14/37	USD 152.829	2.68	11.07
PERU 5.625 11/18/2050	USD 155.315	2.90	17.80
CHILE 2.25 10/30/22	USD 101.401	1.76	2.55
CHILE 3.875 08/05/20	USD 100.962	1.82	0.42
CHILE 3.625 10/30/2042	USD 112.723	2.87	2.84
COLOM 11.75 02/25/20	USD 100.763	-28.56	-93.83
COLOM 11.85 03/09/28	USD 162.786	3.02	2.95
COLOM 10.375 01/28/33	USD 164.924	3.92	3.91
COLOM 7.375 09/18/37	USD 149.201	3.58	3.57
COLOM 6.125 01/18/41	USD 136.435	3.631	3.613
MEX 4 10/02/23	USD 106.769	2.07	1.99
MEX5.55 01/45	USD 129.469	3.727	3.719



Source: Bloomberg

Equity

Largest gains	Exchange	Amt.	Price	▲%	Largest losses	Exchange	Amt.	Price	▼%
SQM-A	Santia.	CLP	23371.00	28.05	VOLCAN	Santia.	CLP	2000.00	-13.04
PML	Lima	USD	0.08	20.00	MOROCO1	Lima	PEN	0.72	-5.26
SQM-B	Santia.	CLP	23000.00	7.20	PROMIGAS	Colomb.	COP	7800.00	-4.29
FALABELLA	Santia.	CLP	2915.00	7.17	Enjoy	Santia.	CLP	13.77	-3.91

Per Turnover

Exchange	Amount (US\$)	
SQM-B	Santia.	13,483,612
PFBCOLOM	Colomb.	10,272,415
FALABELLA	Santia.	9,339,458
ECOPETROL	Colomb.	8,489,594
BSANTANDER	Santia.	8,301,852

Per Volume

Exchange	Volume	
BSANTANDER	Santia.	183,203,825
ORO BLANCO	Santia.	118,218,989
CHILE	Santia.	87,509,593
VAPORES	Santia.	44,531,865
COLBUN	Santia.	14,946,300

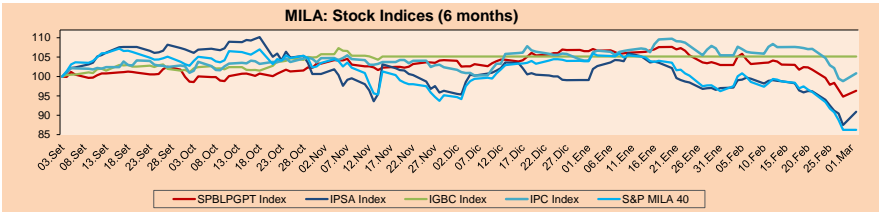
MILA

Peru: The General Index of the BVL ended today's session with a positive result of + 1.60%. The index maintains an annual cumulative negative trend of -9.60% in local currency, while the adjusted yield in dollars amounts to -13.08%. Then, the S&P / BVL Peru SEL varied by + 1.44% while the S&P / BVL LIMA 25 by + 1.57%. The PEN spot reached 5 / 3,435. Holder: Banco de la Nación goes out to compete with mortgages at rates below 7.5%.

Chile: The IPISA index ended the day with a positive return of + 3.91%. The actions with the best performance of the day were Enel Americas SA (+ 8.03%) and Corpanca (+ 7.36%). Owner: AES Gener announces investment for US \$ 1,800M in renewable energy in Chile and Colombia.

Colombia: The COLCAP index had a negative result of -0.85%. The actions with the worst performance were Avianca Holdings SA (-4.88%) and Promigas SA (-4.29%). Headline: Inflation in Colombia would have accelerated in February, but expectations remain.

Mexico: The MEXBOL index ended the day with a positive return of + 2.04%. The actions with the best performance were Mexichem SAB de CV (+ 7.27%) and Alsea SAB de CV (+ 5.09%). Owner: Mexico country risk records weekly increase due to coronavirus.

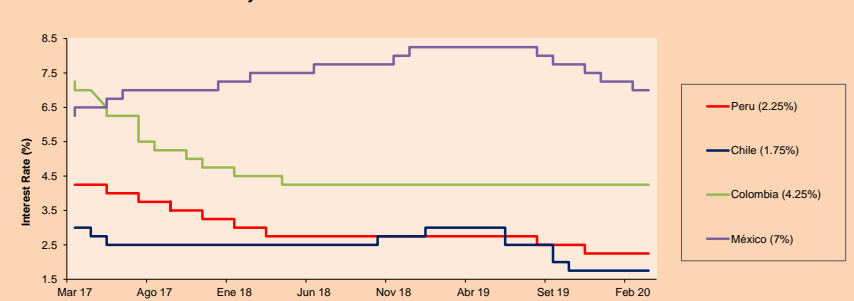


Base: 04/09/19=100
Source: Bloomberg

ETFs

ETFs	Curr.	Close	1D	5D	30 D	YTD	Exchange
▲ iShares MSCI All Peru Caped Index Fund	USD	31.89	2.08%	-6.12%	-7.40%	-13.93%	NYSE Arca
▲ iShares MSCI All Chile Caped Index Fund	USD	28.6	6.08%	-1.62%	-6.75%	-14.19%	Cboe BZX
▲ Global X MSCI Colombia	USD	12	2.52%	-6.72%	-8.19%	-13.67%	NYSE Arca
▲ iShares MSCI Mexico Capped	USD	43	3.32%	-4.51%	-6.24%	-4.51%	NYSE Arca
▲ iShares MSCI Emerging Markets	USD	41.4	2.17%	-0.65%	-1.69%	-7.73%	NYSE Arca
▲ Vanguard FTSE Emerging Markets	USD	41.3	1.92%	-0.96%	-1.69%	-7.13%	NYSE Arca
▲ iShares Core MSCI Emerging Markets	USD	49.6	1.83%	-0.72%	-1.96%	-7.74%	NYSE Arca
▲ iShares JP Morgan Emerging Markets Bonds	USD	53.81	0.84%	-1.32%	-2.96%	-8.27%	Cboe BZX
▲ Morgan Stanley Emerging Markets Domestic	USD	6.58	2.81%	-3.52%	-4.64%	-5.87%	New York

MILA: Policy Rate



Source: Bloomberg

Capital Market Laboratory Codinator: Economist Bruno Bellido Anicama
Collaboration: Alonso Butters, Luis Davila and Manuel Muñoz Najar
e-mail: pulsobursatil@ulima.edu.pe
facebook: www.facebook.com/pulsobursatil.ul
Phone number : 4376767 Annex: 35340

PULSO BURSÁTIL

LIMA

Stocks

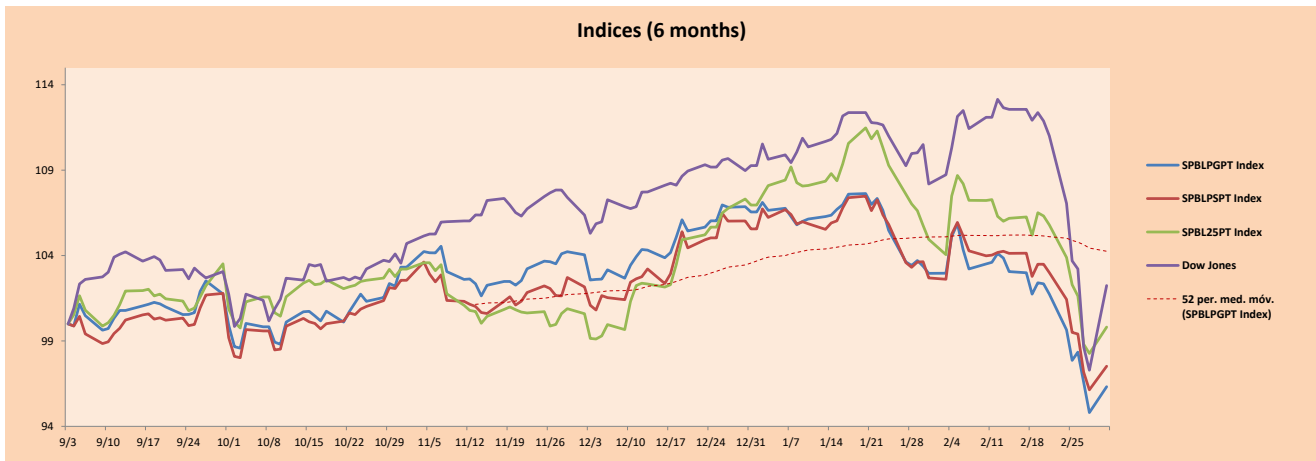
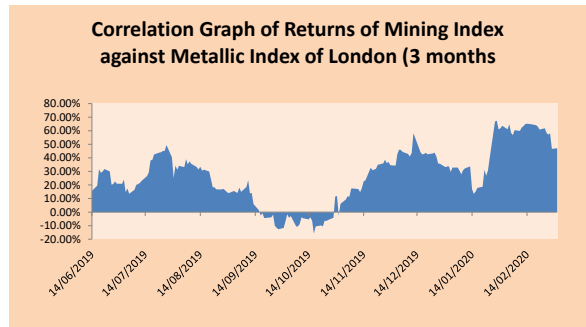
Ticker	Currency	Price	1D*	5D*	30D*	YTD*	Frequency	Volume (US\$)	Beta	Dividend Yield (%)	Price Earning	Market Cap. (M US\$)	Economic Sector*	Index Weight
▲ COLSC (Colombi	S/.	8.55	0.54%	0.62%	1.99%	2.35%	100.00%	167,403	0.67	2.81	16.44	2,117.81	Industrial	3.53%
▲ ATACOB1 PE**	S/.	0.14	2.86%	-10.00%	-12.73%	-12.73%	70.00%	2,511	1.23	0.00	-	93.43	Mining	1.02%
▼ BACKUS1 PE**	S/.	26.99	-0.04%	-3.61%	-15.63%	-5.30%	95.00%	15,463	0.53	5.51	7.96	10,804.60	Industrial	0.82%
▲ BAP PE**	US\$	190.00	4.86%	-2.12%	-8.12%	-10.66%	100.00%	2,039,412	1.26	4.42	-	15,154.68	Diverse	5.82%
▼ BVN PE**	US\$	10.82	-3.74%	-11.31%	-15.47%	-29.28%	95.00%	191,574	1.34	0.77	-	2,962.37	Mining	5.88%
▼ CASAGRC1 PE**	S/.	2.80	-2.44%	-12.50%	-3.78%	-7.59%	90.00%	17,290	0.89	0.45	13.06	68.54	Agricultural	1.31%
- BBVAC1 PE**	S/.	3.30	0.00%	-1.79%	-2.94%	-3.79%	100.00%	32,221	0.50	4.18	12.60	5,643.73	Finance	2.85%
- CORARE1 PE**	S/.	0.86	0.00%	-4.44%	-5.49%	-5.49%	90.00%	16,423	0.78	0.00	4.18	348.56	Industrial	1.72%
▲ CPACASC1 PE**	S/.	6.15	5.13%	0.82%	0.16%	0.00%	90.00%	60,650	0.53	5.85	19.84	762.50	Industrial	2.38%
▲ CVERDEC1 PE**	US\$	17.00	3.03%	-0.29%	-8.11%	-11.92%	90.00%	55,295	1.00	2.52	-	5,950.95	Mining	5.25%
- ENGEPEC1 PE**	S/.	2.22	0.00%	-3.48%	-6.72%	-3.48%	55.00%	104,956	0.59	0.00	11.49	1,831.35	Public Services	1.44%
▲ ENDISPC1**	S/.	6.65	1.22%	0.00%	-7.64%	-9.52%	75.00%	19,325	0.47	3.46	10.42	1,234.00	Public Services	0.98%
▲ FERREY1 PE**	S/.	2.00	0.50%	-2.44%	0.00%	-8.68%	100.00%	10,461	0.86	5.12	7.51	567.06	Diverse	4.90%
▲ GRAMONC1 PE**	S/.	1.72	2.99%	-7.03%	12.42%	1.18%	100.00%	59,488	1.28	0.00	-	435.81	Diverse	4.05%
▲ IFS PE**	US\$	39.50	4.44%	-3.38%	-6.29%	-3.42%	95.00%	189,652	0.86	4.43	-	4,560.18	Diverse	7.22%
▲ INRET1 PE**	US\$	34.50	0.58%	-6.12%	-8.24%	-4.17%	95.00%	764,797	0.66	0.99	28.87	3,546.85	Diverse	5.28%
▼ LUSUR1 PE**	S/.	26.00	-3.70%	2.16%	8.33%	0.97%	100.00%	885,515	0.63	4.62	20.81	3,679.16	Public Services	1.81%
▲ MINSUR1 PE**	S/.	1.50	1.35%	-6.83%	-9.09%	-3.85%	100.00%	120,477	1.14	5.05	6.39	1,256.68	Mining	3.09%
▲ PML PE**	US\$	0.08	20.00%	-13.33%	20.00%	39.29%	70.00%	24,569	1.38	0.00	-	20.58	Mining	2.12%
▲ RELAPAC1 PE**	S/.	0.09	3.53%	-11.11%	-26.05%	-28.46%	85.00%	26,999	1.25	0.00	-	212.74	Industrial	2.12%
▲ SCCO PE**	US\$	34.90	4.90%	-1.99%	-8.16%	-17.75%	90.00%	250,640	1.41	4.58	18.18	26,979.76	Mining	2.14%
▲ SIDERC1 PE**	S/.	0.88	2.33%	1.15%	0.00%	-1.12%	100.00%	20,650	1.27	11.60	10.00	314.01	Industrial	1.43%
▲ TV PE**	US\$	0.11	3.74%	-9.76%	-25.50%	-35.84%	95.00%	55,318	2.06	0.00	-	89.56	Mining	2.93%
▼ UNACEMC1 PE**	S/.	1.96	-0.51%	0.00%	3.87%	-1.36%	95.00%	284,602	0.63	2.65	9.94	1,035.55	Industrial	3.00%
▲ VOLCABC1 PE**	S/.	0.47	6.16%	-7.00%	-3.53%	4.49%	100.00%	272,575	1.79	0.00	-	1,981.97	Mining	5.90%
- NEXAPEC1 PE**	S/.	3.20	0.00%	-6.43%	-5.88%	-7.25%	40.00%	5,103	0.81	0.00	30.09	1,231.11	Mining	1.56%

Quantity of shares: 26
Source: Bloomberg, Economática
* Bloomberg Industry Classification System
** PER is used in the stock market and original currency of the instrument
*Legend: Variation 1D: 1 Day; 5D: 5 Days; 1M: 1 Month; YTD: Var.% 12/31/18 to date

Sectorial Indices

	Close	1D*	5D*	30D*	YTD*	Beta
▲ Mining Index	249.46	0.76%	-5.46%	-9.73%	-18.12%	1.38
▲ Consumer Index	1,093.89	0.22%	-5.16%	-8.10%	-4.06%	0.39
▲ Industrial Index	203.96	1.49%	-1.95%	2.48%	-3.39%	0.64
▲ Banking and Financial Index	1,102.31	4.06%	-1.34%	-6.43%	-6.55%	1.23
▲ Construction Index	225.23	1.87%	-1.62%	4.03%	-0.62%	0.55
▼ Services Index	634.20	-1.24%	-0.09%	-0.40%	-2.66%	0.21
▲ Juniors Index	14.88	6.97%	-8.49%	2.41%	2.83%	0.18
▼ Electric Index	619.13	-1.25%	-0.09%	-0.40%	-2.66%	0.21

*Legend: Variation 1D: 1 Day; 5D: 5 Days; 1M: 1 Month; YTD: Var.% 12/31/19 to date



Source: Bloomberg

Capital Market Laboratory Coordinador: Economist Bruno Bellido Anicama
Collaboration: Alonso Butter, Luis Davila and Manuel Muñoz Najar
e-mail: pulsohorsatil@ulima.edu.pe
facebook: www.facebook.com/pulsohorsatil.ul
Phone number : 4376767 Annex: 35340

The content of this document is just for informational purposes. The information and opinions expressed should not be consider as recommendations for future decisions. Under any circumstances, the Capital Market Laboratory of University of Lima will be responsible for the use of the statements in this document.

PULSO BURSÁTIL

SOVEREIGN RATING

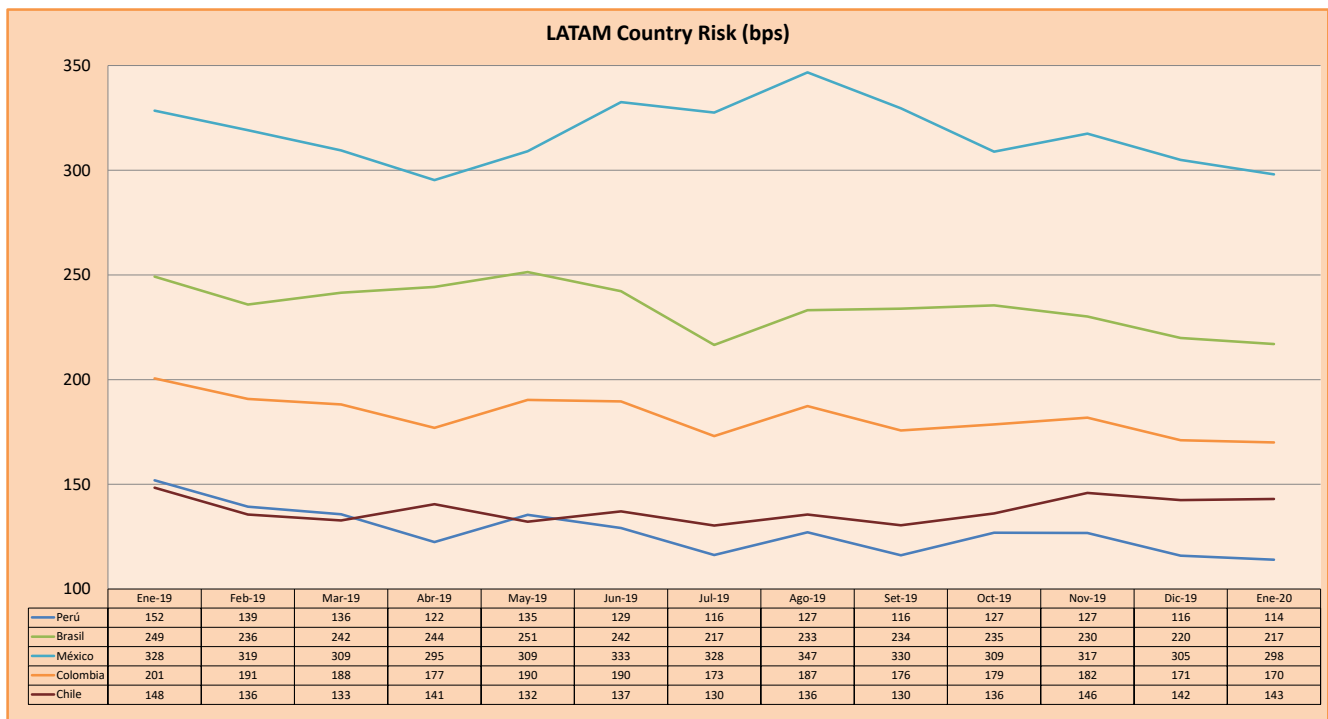
RISK RATINGS

Moody's	S&P	Fitch	
Aaa	AAA	AAA	Prime
Aa1	AA+	AA+	High credit quality
Aa2	AA	AA	
Aa3	AA-	AA-	
A1	A+	A+	Medium-high grade, with low credit risk
A2	A	A	
A3	A-	A-	
Baa1	BBB+	BBB+	Moderate Credit Risk
Baa2	BBB	BBB	
Baa3	BBB-	BBB-	
Ba1	BB+	BB+	It has speculative elements and it is subject to substantial credit risk
Ba2	BB	BB	
Ba3	BB-	BB-	
B1	B+	B+	It is considered speculative and it has high credit risk
B2	B	B	
B3	B-	B-	
Caa1	CCC+		Bad credit conditions and it is subject to high credit risk
Caa2	CCC		
Caa3	CCC-	CCC	
Ca	C		Very close to default or in default
		DDD	
C	D	DD D	

Source: Bloomberg

Latin America Credit Rating			
Clasificadora de riesgo			
Country	Moody's	Fitch	S&P
Peru	A3	BBB+	BBB+
ECOPETROL	A3	BBB	BBB+
Venezuela	C	WD	SD
Brazil	Ba2	BB-	BB-
Colombia	Baa2	BBB	BBB-
Chile	A1	A	A+
Argentina	Caa2 *	CC	CCC-
Panama	Baa1	BBB	BBB+

Source: Bloomberg



Source: BCRP

Capital Market Laboratory Coordinator: Economist Bruno Bellido Anicama
 Support: Alonso Butters, Luis Davila and Manuel Muñoz Najar
 e-mail: pulsobursatil@ulima.edu.pe
 facebook: www.facebook.com/pulsobursatil.ul
 Phone number : 4376767 Annex: 35340

The content of this document is just for informational purposes. The information and opinions expressed should not be considered as recommendations for future decisions. Under any circumstances, the Capital Market Laboratory of University of Lima will be responsible for the use of the statements in this document.