



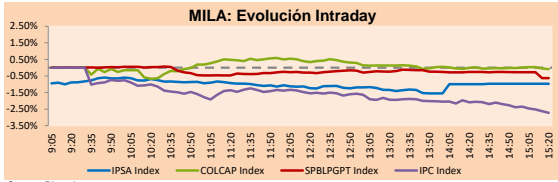
# PULSO BURSÁTIL

Lima, March 5, 2020

## MILA

Main Indexes	Close	1 D	5 D	1 M	YTD	Cap. Burs. (US\$ bill)
▼ IPISA (Chile)	4,324.09	-0.97%	1.43%	-7.51%	-7.40%	107.07
▼ IGPA (Chile)	21,607.34	-0.92%	0.92%	-7.68%	-7.64%	137.71
▲ COLSC (Colombia)	992.72	0.11%	0.34%	-1.16%	1.50%	9.40
▲ COLCAP (Colombia)	1,546.66	0.14%	-0.64%	-6.62%	-6.96%	96.00
▼ S&P/BVL (Perú)*	18,718.23	-0.63%	0.59%	-8.22%	-8.81%	86.62
▼ S&P/BVL SEL (Perú)	495.22	-0.37%	1.23%	-7.14%	-6.81%	67.71
▼ S&P/BVL LIMA 25	24,078.59	-0.73%	1.21%	-8.00%	-6.50%	80.85
▼ IPC (México)	42,344.86	-2.44%	1.77%	-5.44%	-2.75%	271.94
▲ S&P MILA 40	520.61	1.75%	1.11%	-11.01%	-13.67%	220.75

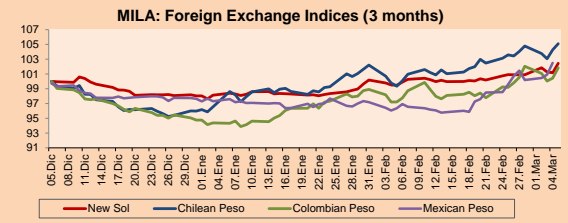
\*Legend: Variation 1D: 1 day; 5D: 5 days; 1M: 1 Month; YTD: Var% 12/31/19 to date



Source: Bloomberg

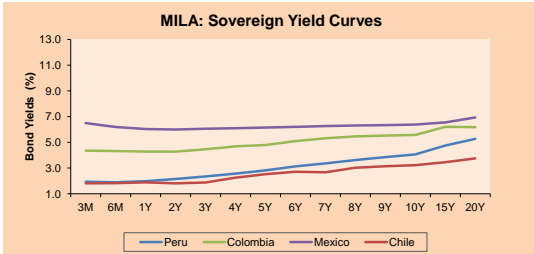
Currency	Price	1D*	5D*	30 D*	YTD*
▲ New Sol (PEN)	3,461.7	1.24%	0.76%	2.93%	4.51%
▲ Chilean Peso (CLP)	823.20	0.79%	1.01%	5.33%	9.50%
▲ Colombian Peso (COP)	3,522.00	1.39%	1.31%	4.78%	7.47%
▲ Mexican Peso (MXN)	19.85	1.58%	1.78%	6.30%	4.85%

\*Legend: Variation 1D: 1 day; 5D: 5 days; 1M: 1 Month; YTD: Var% 12/31/19 to date



Base: 05/12/19=100  
Source: Bloomberg

Fixed Income	Bid Yield (%)	Ask Yield (%)	Duration
PERU 4.125 08/25/2027	USD 116.7	1.75	1.71 6.54
PERU 7.35 07/21/25	USD 129.677	1.58	1.54 4.59
PERU 8.75 11/21/33	USD 173.721	2.41	2.39 9.40
PERU 6.55 03/14/37	USD 155.594	2.52	2.50 11.14
PERU 5.625 11/18/2050	USD 159.17	2.77	2.75 18.08
CHILE 2.25 10/30/22	USD 102.148	1.46	1.37 2.54
CHILE 3.875 08/05/20	USD 101.034	1.57	1.04 0.40
CHILE 3.625 10/30/2042	USD 114.722	2.76	2.73 16.11
COLOM 11.75 02/25/20	USD 100.763	-28.56	-93.83 0.01
COLOM 11.85 03/09/28	USD 164.431	2.84	2.77 5.93
COLOM 10.375 01/28/33	USD 160.708	4.29	4.15 8.46
COLOM 7.375 09/18/37	USD 151.578	3.44	3.43 11.21
COLOM 6.125 01/18/41	USD 138.984	3.493	3.468 13.3
MEX 4 10/02/23	USD 107.386	1.88	1.82 3.29
MEX5.55 01/45	USD 131.763	3.609	3.6 15.12



Source: Bloomberg

## Equity

Largest gains	Exchange	Amt.	Price	▲%
ANDINA-B	Santia.	CLP	2120.10	2.17
BOGOTA	Colomb.	COP	87960.00	1.62
PFCORFICOL	Colomb.	COP	27500.00	1.10
ISA	Colomb.	COP	18500.00	1.09

Per Turnover	Exchange	Amount (US\$)
CHILE	Santia.	9,896,815
PFBCOLOM	Colomb.	9425917.093
ECOPETROL	Colomb.	8,642,405
SOM-B	Santia.	7084171.526
BSANTANDER	Santia.	5,984,639

Largest losses	Exchange	Amt.	Price	▼%
ORO BLANCO	Santia.	CLP	2.4	-5.94
NAVIERA	Santia.	CLP	20.67	-3.861
CREDITC1	Santia.	PEN	5.20	-3.70
BAP	Santia.	USD	191.01	-3.569

Per Volume	Exchange	Volume
BSANTANDER	Santia.	130,042,224
CHILE	Santia.	104904213
ORO BLANCO	Santia.	102,183,550
VAPORES	Santia.	14220609
ECOPETROL	Colomb.	9,583,301

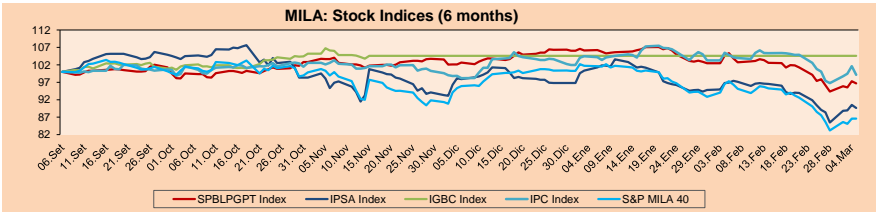
## MILA

Peru: The General Index of the BVL ended today's session with a negative result of -0.63%. The index maintains an annual cumulative negative trend of -8.81% in local currency, while the adjusted yield in dollars amounts to -11.63%. Then, the S&P / BVL Peru SEL varied by -0.37% while the S&P / BVL LIMA 25 by -0.73%. The PEN spot reached S/ 3.4587. Headline: Public investment is not going to recover significantly this year, Caepeco estimates.

Chile: The IPISA index ended the day with a negative return -0.97%. The sectors most affected in the day were Materials (-1.91%) and Industrial (-1.51%). The actions with the worst performance were CAP SA (-3.02%) and Inversiones La Construcción SA (-2.91%). Headline: Chile confirms fourth case of coronavirus in a person from Italy.

Colombia: The COLCAP index had a positive result of +0.14%. The sectors most affected in the day were First Needs Products (+0.73%) and Energy (+0.60%). The values with the best results were CEMEX Latam Holdings SA (+5.42%) and Canacol Energy Ltd (+2.68%). Headline: Energy companies have US \$ 650 million to invest in pilot fracking projects in Colombia.

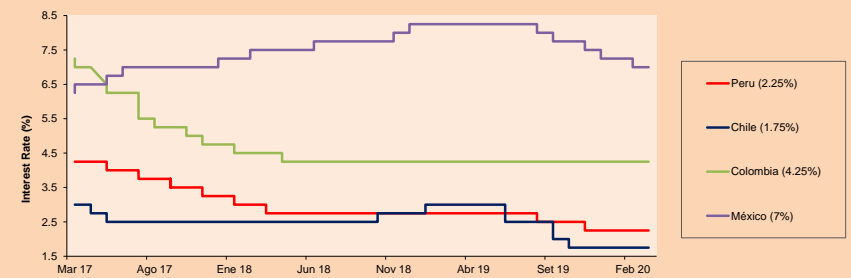
Mexico: The MEXBOL index closed the session with a negative result of -2.44%. The sectors with the worst returns of the day were Health (-4.29%) and Finance (-3.70%). The actions with the worst performance were Cemex SAB de CV (-6.98%) and Grupo Financiero Banorte SAB (-5.14%). Headline: Heineken and Enel Green Power sign 28.8 Gwh energy purchase agreement in Mexico.



Base: 09/09/19=100  
Source: Bloomberg

ETFs	Curr.	Close	1D	5D	30 D	YTD	Exchange
▼ iShares MSCI All Peru Caped Index Fund	USD	31.93	-2.02%	1.33%	-9.08%	-13.82%	NYSE Arca
▼ iShares MSCI All Chile Caped Index Fund	USD	27.33	-5.01%	-0.98%	-14.06%	-18.00%	Cboe BZX
▼ Global X MSCI Colombia	USD	11.731	-2.00%	-3.21%	-12.00%	-15.60%	NYSE Arca
▼ iShares MSCI Mexico Capped	USD	42.13	-4.01%	0.00%	-10.82%	-6.44%	NYSE Arca
▼ iShares MSCI Emerging Markets	USD	40.97	-2.10%	0.74%	-6.20%	-8.69%	NYSE Arca
▼ Vanguard FTSE Emerging Markets	USD	40.88	-1.92%	0.62%	-5.63%	-8.07%	NYSE Arca
▼ iShares Core MSCI Emerging Markets	USD	49.08	-2.06%	0.70%	-6.41%	-8.71%	NYSE Arca
▼ iShares JP Morgan Emerging Markets Bonds	USD	54.08	-1.19%	0.99%	-4.45%	-7.81%	Cboe BZX
▼ Morgan Stanley Emerging Markets Domestic	USD	6.58	-2.23%	-0.75%	-4.78%	-5.87%	New York

## MILA: Policy Rate



Source: Bloomberg

Capital Market Laboratory Codinador: Economist Bruno Bellido Anicama  
Collaboration: Alonso Butters and Luis Davila.  
e-mail: pulsobursatil@ulima.edu.pe  
facebook: www.facebook.com/pulsobursatil.ul  
Phone number : 4376767 Annex: 35340



# PULSO BURSÁTIL

## LIMA

### Stocks

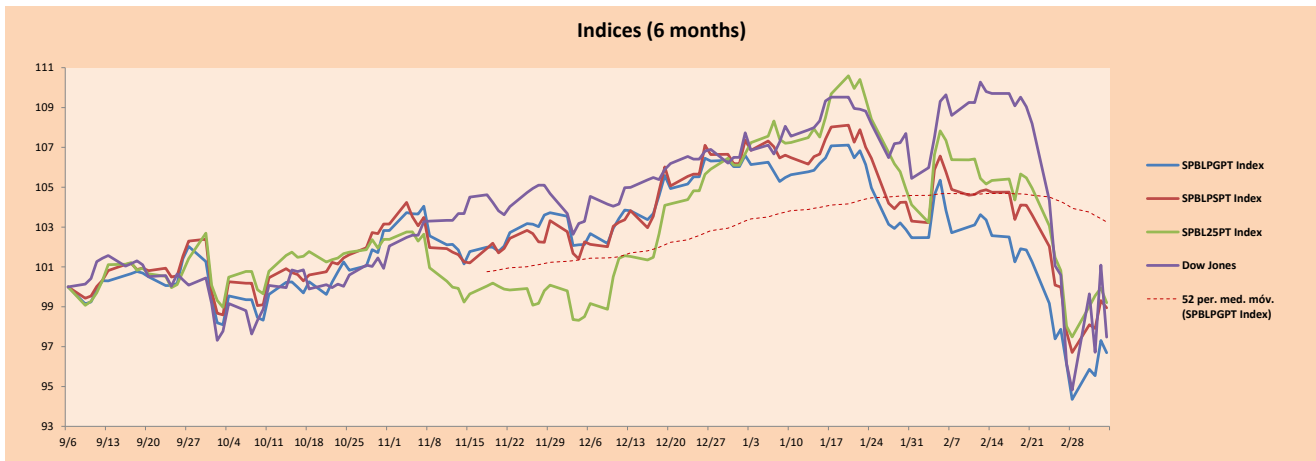
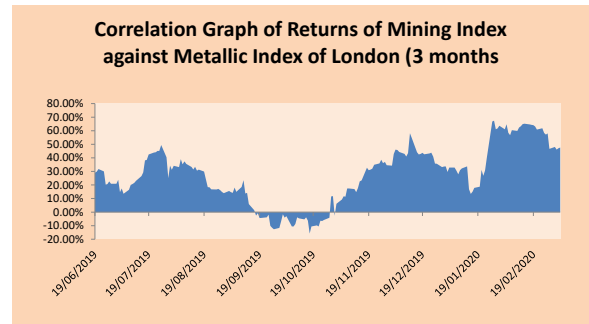
Ticker	Currency	Price	ANDINA				Frequency	Volume (US\$)	Beta	Dividend Yield (%)	Price Earning	Market Cap. (M US\$)	Economic Sector*	Index Weight
			1D*	5D*	30D*	YTD*								
▲ COLSC (Colombia)	S/.	8.79	0.11%	0.34%	-1.16%	1.50%	100.00%	265,094	0.67	2.73	15.76	2,164.01	Industrial	3.53%
▲ ATACOB1 PE**	S/.	0.16	0.00%	10.34%	-13.51%	-3.03%	75.00%	13,174	1.25	0.00	-	94.83	Mining	1.02%
- BACKUS1 PE**	S/.	27.00	0.00%	-3.54%	-15.60%	-5.26%	85.00%	19,570	0.53	0.00	7.96	10,641.19	Industrial	0.82%
▼ BAP PE**	US\$	191.01	-3.57%	3.85%	-10.11%	-10.19%	100.00%	1,337,848	1.34	4.40	-	15,235.24	Diverse	5.82%
▲ BVN PE**	US\$	11.11	1.00%	-10.26%	-15.38%	-27.39%	95.00%	136,898	1.17	0.75	-	3,062.30	Mining	5.88%
▲ CASAGRC1 PE**	S/.	2.88	-2.37%	-2.37%	-4.00%	-4.95%	90.00%	2,592	0.86	0.44	13.44	70.08	Agricultural	1.31%
- BBVAC1 PE**	S/.	3.30	0.00%	-1.49%	-2.08%	-3.79%	100.00%	68,471	0.49	4.18	12.60	5,610.30	Finance	2.85%
- CORARE1 PE**	S/.	0.85	0.00%	-4.49%	-8.60%	-6.59%	85.00%	134,245	0.74	7.73	4.13	340.47	Industrial	1.72%
- CPACASC1 PE**	S/.	6.10	0.00%	2.52%	-0.81%	-0.81%	90.00%	137,635	0.62	5.90	19.68	751.86	Industrial	2.38%
▼ CVERDEC1 PE**	US\$	16.50	-2.94%	-2.94%	-13.16%	-14.51%	90.00%	148,083	0.99	2.60	-	5,775.92	Mining	5.25%
- ENGEPEC1 PE**	S/.	2.22	0.00%	-1.33%	-7.11%	-3.48%	50.00%	276	0.59	0.00	11.49	1,820.50	Public Services	1.44%
- ENDISPC1**	S/.	6.79	0.00%	3.35%	0.59%	-7.62%	80.00%	23,636	0.47	3.39	10.64	1,252.52	Public Services	0.98%
▼ FERREYC1 PE**	S/.	2.09	-0.48%	4.50%	-0.48%	-4.57%	100.00%	420,890	0.82	4.90	8.26	589.07	Diverse	4.90%
▼ GRAMONC1 PE**	S/.	1.73	-1.14%	4.85%	-4.42%	1.76%	100.00%	67,744	1.23	0.00	-	435.74	Diverse	4.05%
▼ IFS PE**	US\$	38.50	-2.28%	0.13%	-8.33%	-5.87%	95.00%	168,802	0.93	4.55	10.43	4,444.74	Diverse	7.22%
▼ INRETC1 PE**	US\$	34.12	-0.23%	-2.79%	-9.62%	-5.22%	95.00%	143,304	0.66	1.00	28.75	3,507.79	Diverse	5.28%
▼ LUSURC1 PE**	S/.	25.90	-0.35%	5.71%	1.57%	0.58%	100.00%	145,759	0.51	4.63	20.73	3,643.31	Public Services	1.81%
▼ MINSUR1 PE**	S/.	1.50	-1.32%	-1.32%	-8.54%	-3.85%	100.00%	26,612	1.14	5.05	6.34	1,249.24	Mining	3.09%
▼ PML PE**	US\$	0.08	0.00%	7.14%	15.38%	33.93%	65.00%	650	1.38	0.00	-	19.79	Mining	2.12%
▼ RELAPAC1 PE**	S/.	0.09	-2.22%	6.02%	-23.48%	-28.46%	85.00%	42,047	1.25	0.00	-	211.48	Industrial	2.12%
▼ SCCO PE**	US\$	34.93	-2.29%	2.74%	-12.68%	-17.68%	90.00%	14,328	1.44	4.58	18.19	27,002.95	Mining	2.14%
- SIDERC1 PE**	S/.	0.90	0.00%	4.65%	0.00%	1.12%	100.00%	29,427	1.27	11.34	10.23	319.24	Industrial	1.43%
▼ TV PE**	US\$	0.10	-3.03%	-11.93%	-31.43%	-44.51%	95.00%	70,036	2.06	0.00	-	77.46	Mining	2.93%
▼ UNACEMC1 PE**	S/.	1.93	-1.03%	1.05%	-0.36%	-2.87%	95.00%	225,155	0.59	2.69	9.71	1,013.66	Industrial	3.00%
▼ VOLCABC1 PE**	S/.	0.46	-3.16%	4.55%	-13.21%	3.37%	100.00%	570,379	1.64	0.00	-	1,928.95	Mining	5.90%
- NEXAPEC1 PE**	S/.	3.20	0.00%	-1.54%	-8.57%	-7.25%	35.00%	5,073	0.81	0.00	29.88	1,223.82	Mining	1.56%

Quantity of shares: 26  
 Source: Bloomberg, Economática  
 \* Bloomberg Industry Classification System  
 \*\* PER is used in the stock market and original currency of the instrument  
 \*Legend: Variation 1D: 1 Day; 5D: 5 Days; 1M: 1 Month; YTD: Var.% 12/31/18 to date

### Sectorial Indices

	Close	1D*	5D*	30D*	YTD*	Beta
▲ Mining Index	252.77	0.04%	-2.46%	-11.39%	-17.03%	1.33
▲ Consumer Index	1,104.51	0.60%	-0.74%	-7.12%	-3.13%	0.39
▲ Industrial Index	205.45	-0.60%	2.69%	-1.72%	-2.69%	0.62
▼ Banking and Financial Index	1,113.10	-2.17%	4.10%	-7.10%	-5.64%	1.31
▼ Construction Index	223.43	-0.62%	1.89%	-1.91%	-1.41%	0.54
▼ Services Index	633.73	-0.13%	2.01%	-1.77%	-2.73%	0.19
▲ Juniors Index	14.74	1.24%	1.03%	2.15%	1.87%	0.16
▼ Electric Index	618.68	-0.13%	2.00%	-1.77%	-2.73%	0.19

\*Legend: Variation 1D: 1 Day; 5D: 5 Days; 1M: 1 Month; YTD: Var.% 12/31/19 to date



Capital Market Laboratory Coodinator: Economist Bruno Bellido Anicama  
 Collaboration: Alonso Butter and Luis Davila.  
 e-mail: pulsobursatil@ulima.edu.pe  
 facebook: www.facebook.com/pulsobursatil.ul  
 Phone number : 4376767 Annex: 35340

The content of this document is just for informational purposes. The information and opinions expressed should not be consider as recommendations for future decisions. Under any circumstances, the Capital Market Laboratory of University of Lima will be responsible for the use of the statements in this document.

# PULSO BURSÁTIL

## SOVEREIGN RATING

### RISK RATINGS

Moody's	S&P	Fitch	
Aaa	AAA	AAA	Prime
Aa1	AA+	AA+	High credit quality
Aa2	AA	AA	
Aa3	AA-	AA-	
A1	A+	A+	Medium-high grade, with low credit risk
A2	A	A	
A3	A-	A-	
Baa1	BBB+	BBB+	Moderate Credit Risk
Baa2	BBB	BBB	
Baa3	BBB-	BBB-	
Ba1	BB+	BB+	It has speculative elements and it is subject to substantial credit risk
Ba2	BB	BB	
Ba3	BB-	BB-	
B1	B+	B+	It is considered speculative and it has high credit risk
B2	B	B	
B3	B-	B-	
Caa1	CCC+		Bad credit conditions and it is subject to high credit risk
Caa2	CCC		
Caa3	CCC-	CCC	
Ca	C		Very close to default or in default
		DDD	
C	D	DD D	

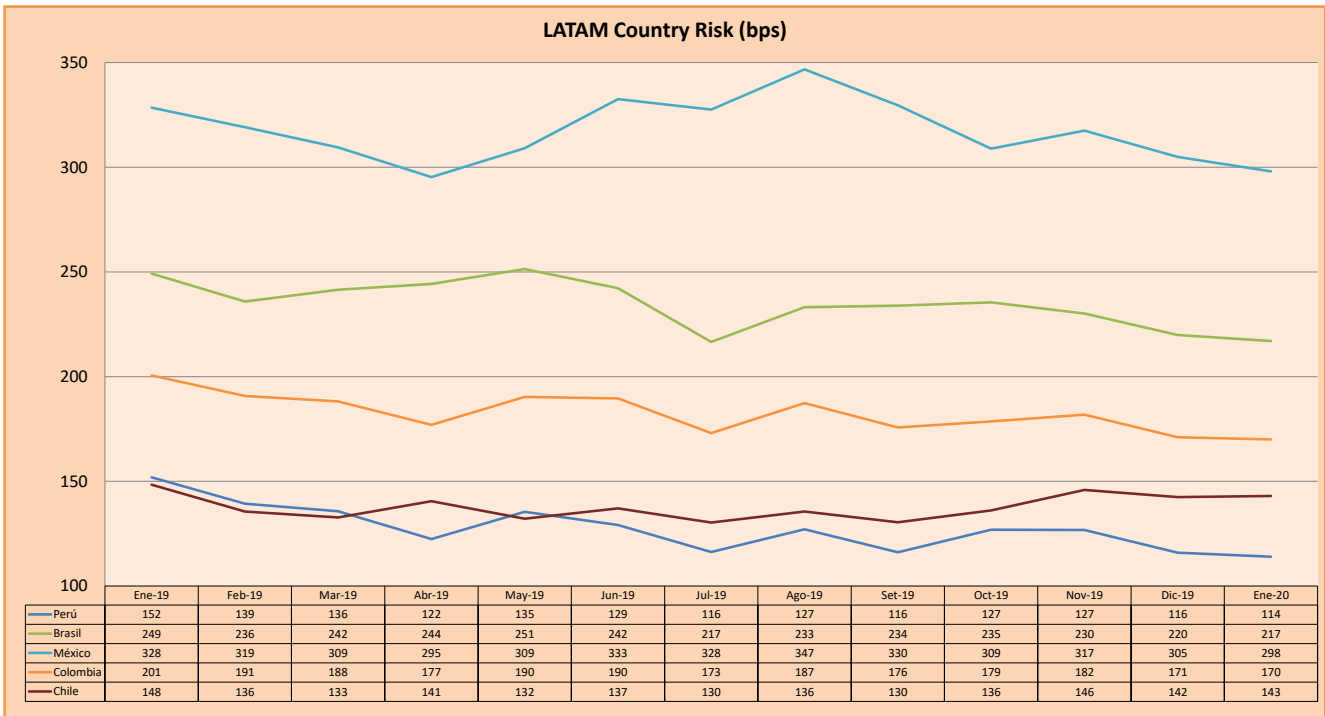
Source: Bloomberg

ANDINA-B

Latin America Credit Rating			
Clasificadora de riesgo			
Country	Moody's	Fitch	S&P
Peru	A3	BBB+	BBB+
México	Ba2	BB-	BB-
Venezuela	C	WD	SD
Brazil	Ba2	BB-	BB-
Colombia	Baa2	BBB	BBB-
Chile	A1	A	A+
Argentine	Caa2 *	CC	CCC-
Panama	Baa1	BBB	BBB+

Source: Bloomberg

### LATAM Country Risk (bps)



Source: BCRP

Capital Market Laboratory Coordinator: Economist Bruno Bellido Anicama  
 Support: Alonso Butters and Luis Davila.  
 e-mail: pulsobursatil@ulima.edu.pe  
 facebook: www.facebook.com/pulsobursatil.ul  
 Phone number : 4376767 Annex: 35340

The content of this document is just for informational purposes. The information and opinions expressed should not be considered as recommendations for future decisions. Under any circumstances, the Capital Market Laboratory of University of Lima will be responsible for the use of the statements in this document.