



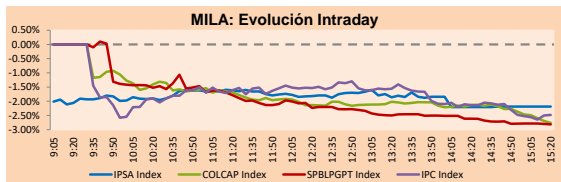
PULSO BURSÁTIL

Lima, March 6, 2020

MILA

Main Indexes	Close	1 D	5 D	1 M	YTD	Cap. Burs. (US\$ bill)
▼ IPSA (Chile)	4,229.46	-3.76%	-4.98%	-13.15%	-12.84%	103.52
▼ IGPA (Chile)	21,165.59	-3.71%	-5.05%	-13.16%	-12.88%	133.24
▼ COLSC (Colombia)	979.27	-2.95%	-5.06%	-5.42%	-2.83%	9.15
▼ COLCAP (Colombia)	1,502.84	-8.59%	-10.59%	-16.98%	-17.36%	91.23
▼ S&P/BVL (Perú)*	18,285.94	-4.75%	-6.14%	-12.41%	-15.15%	84.38
▼ S&P/BVL SEL (Perú)	479.95	-5.20%	-7.33%	-13.33%	-14.38%	65.86
▼ S&P/BVL LIMA 25	23,357.50	-3.97%	-6.67%	-13.13%	-12.91%	78.63
▼ IPC (México)	41,388.78	-5.52%	-7.26%	-11.93%	-10.19%	257.39
▼ S&P MILA 40	495.01	-3.20%	-3.87%	-13.47%	-17.92%	209.63

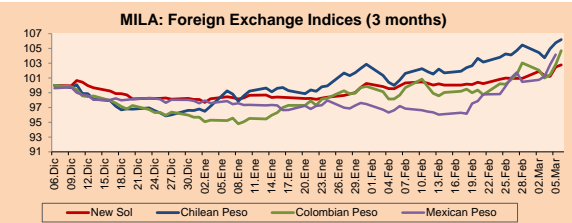
*Legend: Variation 1D: 1 day; 5D: 5 days; 1M: 1 Month; YTD: Var% 12/31/19 to date



Source: Bloomberg

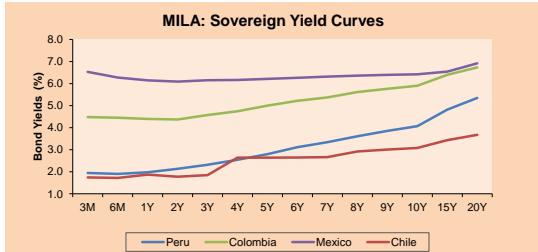
Currency	Price	1D*	5D*	30 D*	YTD*
▲ New Sol (PEN)	3,471.3	0.28%	0.51%	3.24%	4.80%
▲ Chilean Peso (CLP)	826.47	0.40%	0.69%	6.20%	9.94%
▲ Colombian Peso (COP)	3,586.14	1.82%	1.62%	6.65%	9.43%
▲ Mexican Peso (MXN)	20.11	1.33%	2.38%	8.13%	6.26%

*Legend: Variation 1D: 1 day; 5D: 5 days; 1M: 1 Month; YTD: Var% 12/31/19 to date



Base: 06/12/19=100
Source: Bloomberg

Fixed Income	Bid Yield (%)	Ask Yield (%)	Duration
PERU 4.125 08/25/2027	USD 117.642	1.63	1.58 6.54
PERU 7.35 07/21/25	USD 130.332	1.48	1.42 4.59
PERU 8.75 11/21/33	USD 175.989	2.27	2.26 9.44
PERU 6.55 03/14/37	USD 157.985	2.40	2.37 11.17
PERU 5.625 11/18/2050	USD 163.325	2.62	2.61 18.18
CHILE 2.25 10/30/22	USD 102.368	1.39	1.28 2.54
CHILE 3.875 08/05/20	USD 101.078	1.49	0.87 0.40
CHILE 3.625 10/30/2042	USD 117.572	2.60	2.59 16.13
COLOM 11.75 02/25/20	USD 100.763	-28.56	-93.83 0.01
COLOM 11.85 03/09/28	USD 164.583	2.82	2.76 5.93
COLOM 10.375 01/28/33	USD 160.708	4.29	4.15 8.42
COLOM 7.375 09/18/37	USD 153.68	3.33	3.29 11.22
COLOM 6.125 01/18/41	USD 141.425	3.363	3.335 13.33
MEX 4 10/02/23	USD 107.556	1.80	1.80 3.29
MEX5.55 01/45	USD 134.05	3.491	3.49 15.16



Source: Bloomberg

Equity					Per Turnover					Per Volume					
Largest gains	Exchange	Amt.	Price	▲%	Exchange	Amount (US\$)	Exchange	Volume	Exchange	Amt.	Price	▼%			
CREDITC1	Lima	PEN	5.24	0.77	ECOPETROL	Colomb.	20,628,397	CHILE	Santia.	104,279,836	RELAPAC1	Lima	PEN	0.1	-9.09
PARAUCCO	Santia.	CLP	1707.90	0.76	CHILE	Santia.	962703,044	BSANTANDER	Santia.	102504819	C	Lima	USD	60.20	-8.65
CAP	Santia.	CLP	4729.50	0.63	SOM-B	Santia.	7,684,733	VAPORES	Santia.	48,347,876	ECOPETROL	Lima	COP	2,965.00	-6.61
EXITO	Colomb.	COP	15540.00	0.26	PFBACOLOM	Colomb.	7073321,175	ECOPETROL	Colomb.	24604844	TV	Lima	USD	0.09	-6.25
					PFAVAL	Colomb.	6,011,544	ORO BLANCO	Santia.	17,709,971					

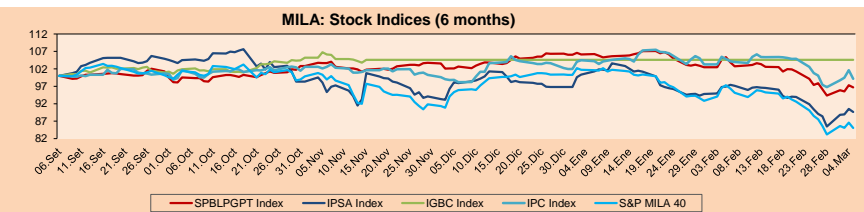
MILA

Peru: The General Index of the BVL ended today's session with a negative result of -0.63%. The index maintains an annual cumulative negative trend of -8.81% in local currency, while the adjusted yield in dollars amounts to -11.63%. Then, the S&P / BVL Peru SEL varied by -0.37% while the S&P / BVL LIMA 25 by -0.73%. The PEN spot reached S/ 3.4587. Headline: Public investment is not going to recover significantly this year, Caepeco estimates.

Chile: The IPSA index ended the day with a negative return -0.97%. The sectors most affected in the day were Materials (-1.91%) and Industrial (-1.51%). The actions with the worst performance were CAP SA (-3.02%) and Inversiones La Construcción SA (-2.91%). Headline: Chile confirms fourth case of coronavirus in a person from Italy.

Colombia: The COLCAP index had a positive result of +0.14%. The sectors most affected in the day were First Needs Products (+0.73%) and Energy (+0.60%). The values with the best results were CEMEX Latam Holdings SA (+5.42%) and Canacol Energy Ltd (+2.68%). Headline: Energy companies have US \$ 650 million to invest in pilot fracking projects in Colombia.

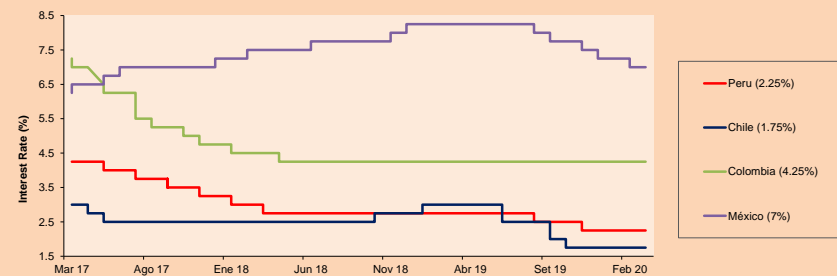
Mexico: The MEXBOL index closed the session with a negative result of -2.44%. The sectors with the worst returns of the day were Health (-4.29%) and Finance (-3.70%). The actions with the worst performance were Cemex SAB de CV (-6.98%) and Grupo Financiero Banorte SAB (-5.14%). Headline: Heineken and Enel Green Power sign 28.8 Gwh energy purchase agreement in Mexico.



Base: 09/09/19=100
Source: Bloomberg

ETFs	Curr.	Close	1D	5D	30 D	YTD	Exchange
▼ iShares MSCI All Peru Caped Index Fund	USD	30.94	-3.10%	-0.96%	-12.60%	-16.49%	NYSE Arca
▼ iShares MSCI All Chile Caped Index Fund	USD	27.29	-0.15%	1.22%	-15.27%	-18.12%	Cboe BZX
▼ Global X MSCI Colombia	USD	11.32	-3.50%	-3.29%	-16.15%	-18.56%	NYSE Arca
▼ iShares MSCI Mexico Capped	USD	40.58	-3.68%	-2.50%	-13.93%	-9.88%	NYSE Arca
▼ iShares MSCI Emerging Markets	USD	40.13	-2.05%	-0.96%	-8.65%	-10.56%	NYSE Arca
▼ Vanguard FTSE Emerging Markets	USD	40.11	-1.88%	-1.01%	-7.92%	-9.80%	NYSE Arca
▼ iShares Core MSCI Emerging Markets	USD	48.12	-1.96%	-1.21%	-8.78%	-10.49%	NYSE Arca
▼ iShares JP Morgan Emerging Markets Bonds	USD	53.63	-0.83%	0.51%	-5.65%	-8.57%	Cboe BZX
▼ Morgan Stanley Emerging Markets Domestic	USD	6.52	-0.91%	1.87%	-6.32%	-6.72%	New York

MILA: Policy Rate



Source: Bloomberg

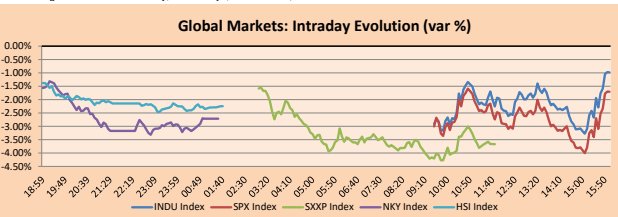
Capital Market Laboratory Codinador: Economist Bruno Bellido Anicama
Collaboration: Alonso Butters and Luis Davila.
e-mail: pulsobursatil@ulima.edu.pe
facebook: www.facebook.com/pulsobursatil.ul
Phone number : 4376767 Annex: 35340

PULSO BURSÁTIL

WORLD

Main Indices	Close	1 D*	5 D*	1 M*	YTD*	Market Cap. (US\$ Mill.)
▼ Dow Jones (USA)	979.27	-7.88%	-10.77%	-18.13%	-16.51%	7,580,979
▼ Standard & Poor's 500 (EEUU)	2,972.37	-7.22%	-10.76%	-17.13%	-14.64%	25,581,354
▼ NASDAQ Composite (USA)	8,575.62	-6.77%	-10.69%	-16.02%	-10.89%	13,296,352
▼ Stoxx EUROPE 600 (Europe)	366.80	-7.44%	-9.70%	-20.00%	-18.36%	8,743,517
▼ DAX (Germany)	11,541.87	-7.94%	-10.40%	-21.38%	-19.81%	947,092
▼ FTSE 100 (United Kingdom)	6,462.55	-7.69%	-10.36%	-20.10%	-20.30%	1,320,055
▼ CAC 40 (France)	5,139.11	-8.39%	-11.73%	-21.92%	-21.25%	1,405,667
▼ IBEX 35 (Spain)	8,375.60	-7.96%	-11.81%	-21.43%	-19.27%	466,742
▼ MSCI AC Asia Pacific Index	156.55	-2.15%	-0.19%	-7.75%	-8.27%	19,939,890
▼ HANG SENG (Hong Kong)	26,146.67	-4.23%	-4.76%	-8.08%	-11.17%	2,378,908
▼ SHANGHAI SE Comp. (China)	3,034.51	-3.01%	-0.93%	1.83%	-3.50%	4,916,403
▼ NIKKEI 225 (Japan)	20,749.75	-5.07%	-7.71%	-16.83%	-16.73%	3,016,541
▼ S&P / ASX 200 (Australia)	6,216.21	-7.33%	-9.87%	-17.85%	-13.82%	1,143,016
▼ KOSPI (South Korea)	2,040.22	-4.19%	-2.38%	-11.19%	-11.05%	1,050,222

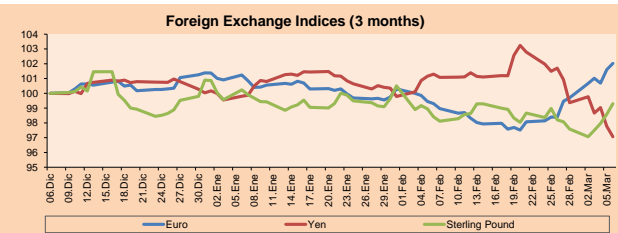
*Legend: Variation 1D: 1 Day; 5D: 5 Days; 1M: 1 Month; YTD: Var.% 12/31/19 to date



Source: Bloomberg

Currency	Price	1 D*	5 D*	1 M*	YTD*
▲ Euro	1.1284	0.42%	2.34%	2.59%	0.63%
▼ Yen	105.3900	-0.73%	-2.32%	-4.04%	-2.96%
▲ Sterling Pound	1.3048	0.73%	1.75%	0.35%	-1.58%
▼ Yuan	6.9314	-0.07%	-0.87%	-0.57%	-0.46%
▼ Hong Kong Dollar	7.7680	-0.06%	-0.33%	0.06%	-0.30%
▲ Brazilian Real	4.6274	0.23%	3.47%	9.11%	14.81%
▲ Argentine Peso	62.4770	0.09%	0.43%	3.12%	4.35%

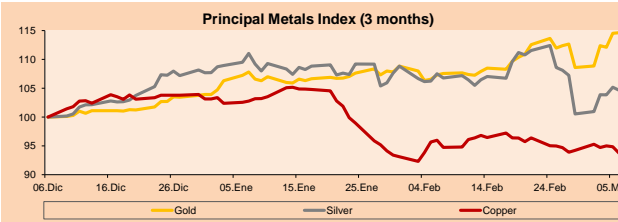
*Legend: Variation 1D: 1 Day; 5D: 5 Days; 1M: 1 Month; YTD: Var.% 12/31/19 to date



Base: 06/12/19=100
Source: Bloomberg

Commodities	Close	1 D*	5 D*	1 M*	YTD*
▲ Oro (US\$ Oz. T) (LME)	1,673.83	0.10%	5.50%	7.57%	10.32%
▼ Plata (US\$ Oz. T) (LME)	17.35	-0.50%	4.10%	-1.49%	-2.32%
▲ Cobre (US\$ TM) (LME)	5,589.00	-1.17%	-0.50%	-2.01%	-9.11%
▼ Zinc (US\$ TM) (LME)	1,965.25	-1.32%	-2.21%	-11.27%	-13.79%
▼ Petróleo WTI (US\$ Barril) (NYM)	41.28	-10.07%	-7.77%	-18.93%	-31.67%
▼ Estarío (US\$ TM) (LME)	16,855.00	-0.94%	3.61%	1.68%	-1.88%
▲ Plomo (US\$ TM) (LME)	1,887.50	0.64%	0.03%	3.37%	-1.36%
▼ Acaúcar #11 (US\$ Libra) (NYB-ICE)	13.02	-2.98%	-7.92%	-10.27%	-3.84%
▼ Cacao (US\$ TM) (NYB-ICE)	2,561.00	-1.39%	-4.15%	-9.02%	0.79%
▼ Café Arábica (US\$ TM) (NYB-ICE)	107.40	-3.55%	-3.55%	7.56%	-18.57%

*Legend: Variación 1D: 1 Día; 5D: 5 Días; 1M: 1 Mes; YTD: Var.% 31/12/19 a la fecha



Base: 06/12/19=100
Source: Bloomberg

Equity

CREDITICI									
Largest gains	Curr.	Price	▲%	Exchange	Largest losses	Curr.	Price	▼%	Exchange
LHA GY	EUR	11.475	-0.22	Xetra	LIN GY	EUR	167.2	-5.94	Xetra
BAS GY	EUR	52.67	-1.22	Xetra	IFX GY	EUR	16,858	-5.45	Xetra
BMW GY	EUR	57.22	-1.46	Xetra	MTX GY	EUR	203.6	-5.30	Xetra
FME GY	EUR	69.1	-1.54	Xetra	DPW GY	EUR	24,785	-4.40	Xetra

Europe (Stocks from STOXX EUROPE 600)									
Largest gains	Curr.	Price	▲%	Exchange	Largest losses	Curr.	Price	▼%	Exchange
AF FP	EUR	5.708	3.33	EN Paris	CPI LN	GBp	68.96	-11.48	Londres
PST IM	EUR	9.722	3.07	Borsa Italiana	B4B GY	EUR	10,635	-11.19	Xetra
IG LN	GBp	431.6	2.01	Londres	EQT SS	SEK	144.65	-9.91	Stockholm
ETL FP	EUR	10.615	1.97	EN Paris	AAL LN	GBp	1681.2	-8.70	Londres

Global Overview:

United States:

US markets ended today's session slightly downward, thus closing one of the weeks with the highest volatility of all time and generating uncertainty among investors, who increasingly withdrew their equity positions to transfer it at fixed rent. It should be noted that the performance of the 10-year treasury bill fell below 0.5% for the first time in its history. On the other hand, the S&P index closed the day at -1.71%, the DJIA at -0.98% and the Nasdaq at -1.87%. Thus, it is the first time that the S&P 500 index had a week of alternations between gains and losses of more than 2% from Monday to Thursday. In economic data, unemployment decreased 3.5%; however, wages weakened slightly, that is, below the 3% expected. In other corporate news, low capitalization companies (small caps) are experiencing their worst start of the year since the financial crisis of 2008. Also, among the DJIA companies that most increased are Walgreens Boots Alliance Inc (+3.55%), 3M Co (+1.48%) and Walt Disney Co (+1.13%). On the other hand, among the most down performance are American Express Co (-2.43%), Nike (-2.45%) and Coca Cola (-2.61%). Finally, as a result of this week of high volatility, the index that measures market volatility (VIX) has increased by 70.58%.

Europe:

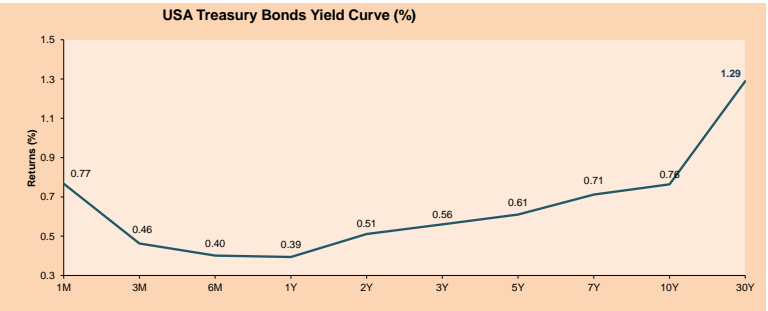
European markets closed the session downwards as the season of losses extends due to widespread panic in the markets due to the rapid expansion of COVID-19. At the date of the report, the number of infected climbed to 100,000 confirmed cases and exceed 3,300 deaths. On the commodities subject, after the announcement of Russia's negative response to the request for the oil reduction proposed by OPEC, the price of oil fell by 11.33%, reaching a minimum of \$ 30 a barrel. Among the same line, the yield curve of the german treasury bonds came to present - for all maturities- negative returns, showing a hint of a global investor career to position itself at the forefront of the stimuli of the main central banks based on risk of recession. Also, production orders for german factories grew more than expected in January due to the increased demand for aircraft and mechanical engineering, according to data revealed by the German Federal Statistics Office on Friday. Orders expanded 5.5% monthly, reversing a 2.1% decrease in December. Thus, the main Stoxx 50 (-3.91%), FTSE 100 (-3.62%), CAC 40 (-4.14%) and DAX (-3.37%) rates closed downwards.

Asia:

Asian markets closed today's session with negative returns, while volatility and uncertainty increase due to COVID-19's fears and the fall in the 10-year Treasury yield. Currently, according to the World Health Organization, there are at least 95,270 infected around the world, with deaths totaling at least 3280. Concern about the outbreak again affected the stocks of airlines. In Australia, Qantas Airway: 7.1%; Japan, ANA Holdings: -3.76%; South Korea, Korean Air Lines: -5.58% and in Hong Kong, China Eastern Airlines -4.08% fell, significantly impacting the indexes of these countries. In addition, the Australia Bureau of Statistics reported that retail turnover dropped -0.3% in January. On the other hand, the Japanese yen, considered by investors as a refuge currency, traded at 105.93 per dollar, after appreciating from a level above 108 at the beginning of the week. Thus, the S&P / ASX 200 -2.81%, Nikkei -2.72%, Kospi Composite -2.16%, Hang Seng -2.32%, Shanghai -1.21% and Jakarta Composite -2.48% ended in negative, among other indexes.

ETFs

	Curr.	Close	1D	5D	30 D	YTD	Exchange
SPDR S&P 500 ETF TRUST	USD	297.46	-1.65%	0.41%	-10.64%	-7.58%	NYSE Arca
ISHARES MSCI EMERGING MARKET	USD	40.13	-2.05%	-0.96%	-8.65%	-10.56%	NYSE Arca
ISHARES IBOXX HIGH YLD CORP	USD	85.05	-1.13%	-0.71%	-2.96%	-2.45%	NYSE Arca
FINANCIAL SELECT SECTOR SPDR	USD	25.55	-3.40%	-3.91%	-17.77%	-16.99%	NYSE Arca
VANECK GOLD MINERS	USD	29.41	-1.37%	12.17%	4.85%	0.44%	NYSE Arca
ISHARES RUSSELL 2000 ETF	USD	144.40	-1.98%	-1.32%	-13.69%	-12.84%	NYSE Arca
SPDR GOLD SHARES	USD	157.55	0.04%	6.18%	7.46%	10.25%	NYSE Arca
ISHARES 20+ YEAR TREASURY BO	USD	166.77	5.20%	7.54%	17.61%	23.48%	NASDAQ GM
INVESCO QQQ TRUST SERIES 1	USD	208.02	-1.69%	1.08%	-8.85%	-2.16%	NASDAQ GM
ISHARES NASDAQ BIOTECHNOLOGY	USD	118.03	-1.28%	3.64%	-2.90%	-2.06%	NASDAQ GM
ENERGY SELECT SECTOR SPDR	USD	42.50	-5.62%	-6.12%	-22.61%	-29.21%	NYSE Arca
PROSHARES ULTRA VIX ST FUTUR	USD	33.45	16.51%	45.94%	188.61%	150.50%	NYSE Arca
UNITED STATES OIL FUND LP	USD	8.73	-9.16%	-7.62%	-18.41%	-31.85%	NYSE Arca
ISHARES MSCI BRAZIL ETF	USD	35.10	-4.26%	-8.50%	-21.98%	-26.03%	NYSE Arca
SPDR S&P OIL & GAS EXP & PR	USD	12.91	-9.59%	-16.06%	-35.22%	-45.53%	NYSE Arca
UTILITIES SELECT SECTOR SPDR	USD	67.11	-0.81%	7.93%	-2.44%	3.85%	NYSE Arca
ISHARES US REAL ESTATE ETF	USD	91.47	-1.70%	4.66%	-4.57%	-1.73%	NYSE Arca
SPDR S&P BIOTECH ETF	USD	90.10	-2.70%	1.03%	-6.19%	-5.27%	NYSE Arca
ISHARES IBOXX HIGH YIELD GRA	USD	134.27	0.70%	1.85%	3.36%	5.48%	NYSE Arca
ISHARES JIP MORGAN USD EMERGI	USD	115.30	-0.41%	1.40%	0.24%	1.37%	NASDAQ GM
REAL ESTATE SELECT SECT SPDR	USD	38.50	-1.71%	4.65%	-3.14%	-0.44%	NYSE Arca
ISHARES CHINA LARGE-CAP ETF	USD	40.26	-2.00%	-0.98%	-2.64%	-7.72%	NYSE Arca
CONSUMER STAPLES SPDR	USD	61.54	-0.79%	6.12%	-3.95%	-2.29%	NYSE Arca
VANECK JR GOLD MINERS	USD	40.12	-1.93%	11.29%	-0.69%	-5.06%	NYSE Arca
SPDR BBG BARC HIGH YIELD BND	USD	105.64	-1.27%	-0.78%	-3.27%	-2.69%	NYSE Arca
VANGUARD REAL ESTATE ETF	USD	90.67	-1.72%	3.82%	-4.83%	-2.28%	NYSE Arca
GRAYSCALE BITCOIN TRUST BTC	USD	10.58	-3.20%	7.41%	-8.12%	29.18%	OTC US



Source: Bloomberg

Capital Market Laboratory Coordinator: Economist Bruno Bellido Anicama

Collaboration: Alonso Butters and Luis Davila

e-mail: pulso_bursatil@ulima.edu.pe

facebook: www.facebook.com/pulso_bursatil

Phone number: 4376767 Anexo: 35340

PULSO BURSÁTIL

LIMA

Stocks

Ticker	Currency	Price	1D*	5D*	30D*	YTD*	Frequency	Volume (US\$)	Beta	Dividend Yield (%)	Price Earning	Market Cap. (M US\$)	Economic Sector*	Index Weight
▼ COLSC (Colombia)	S/.	8.60	-2.95%	-5.06%	-5.42%	-2.83%	100.00%	3,405,502	0.69	2.79	14.73	2,111.65	Industrial	3.53%
▼ ATACOB1 PE**	S/.	0.15	-6.25%	7.14%	-19.79%	-9.09%	80.00%	10,579	1.25	0.00	-	93.35	Mining	1.02%
- BACKUS1 PE**	S/.	27.00	0.00%	0.00%	-14.83%	-5.26%	90.00%	23,334	0.53	5.51	7.96	10,611.77	Industrial	0.82%
▼ BAP PE**	US\$	186.70	-2.26%	3.04%	-13.39%	-12.22%	100.00%	383,916	1.34	4.50	-	14,891.47	Diverse	5.82%
▼ BVN PE**	US\$	10.46	-5.85%	-6.94%	-19.54%	-31.63%	100.00%	316,520	1.19	0.80	-	2,883.14	Mining	5.88%
▼ CASAGRC1 PE**	S/.	2.72	-5.56%	-5.23%	-9.33%	-10.23%	95.00%	23,066	0.96	0.46	12.69	66.00	Agricultural	1.31%
▼ BBVAC1 PE**	S/.	3.25	-1.52%	-1.52%	-5.80%	-5.25%	100.00%	143,437	0.51	4.24	12.21	5,510.02	Finance	2.85%
- CORARE1 PE**	S/.	0.85	0.00%	-1.16%	-8.60%	-6.59%	90.00%	37,392	0.68	7.73	4.03	339.53	Industrial	1.72%
▼ CPACASC1 PE**	S/.	6.00	-1.64%	2.56%	-2.91%	-2.44%	95.00%	92,217	0.64	6.00	18.71	737.57	Industrial	2.38%
▼ CVERDEC1 PE**	US\$	16.25	-1.52%	-1.52%	-14.52%	-15.80%	95.00%	289,926	0.97	2.64	-	5,688.41	Mining	5.25%
▼ ENGEPEC1 PE**	S/.	2.20	-0.90%	-0.90%	-7.95%	-4.35%	55.00%	2,771	0.59	4.06	11.39	1,799.11	Public Services	1.44%
▼ ENDISPC1**	S/.	6.65	-2.06%	1.22%	-1.63%	-9.52%	85.00%	60,962	0.47	3.46	10.42	1,223.30	Public Services	0.98%
▼ FERREYC1 PE**	S/.	2.00	-4.31%	0.50%	-5.21%	-8.68%	100.00%	580,328	0.89	5.12	7.59	562.14	Diverse	4.90%
▼ GRAMONC1 PE**	S/.	1.89	-2.31%	1.20%	-8.65%	-0.59%	100.00%	94,520	1.23	0.00	-	424.49	Diverse	4.05%
▼ IFS PE**	US\$	36.53	-5.12%	-3.41%	-13.95%	-10.68%	100.00%	363,346	0.99	4.79	9.37	4,217.30	Diverse	7.22%
▼ INRET1 PE**	US\$	33.00	-3.28%	-3.79%	-13.16%	-8.33%	100.00%	1,340,498	0.71	1.03	27.26	3,392.64	Diverse	5.28%
▼ LUSURC1 PE**	S/.	25.00	-3.47%	-7.41%	-3.85%	-2.91%	100.00%	197,404	0.54	4.80	19.21	3,506.98	Public Services	1.81%
- MINSUR1 PE**	S/.	1.50	0.00%	1.35%	-0.09%	-3.85%	100.00%	1,128	1.14	0.00	5.96	1,245.79	Mining	3.09%
- PML PE**	US\$	0.08	0.00%	15.38%	13.64%	33.93%	70.00%	1,414	1.39	0.00	-	19.79	Mining	2.12%
▼ RELAPAC1 PE**	S/.	0.08	-9.09%	-5.88%	-30.43%	-34.96%	90.00%	121,873	1.37	0.00	-	191.72	Industrial	2.12%
▲ SCCO PE**	US\$	34.55	0.06%	5.05%	-13.17%	-17.63%	95.00%	48,606	1.40	4.63	16.55	27,018.41	Mining	2.14%
▼ SIDERC1 PE**	S/.	0.81	-3.25%	1.26%	-5.41%	-2.19%	100.00%	106,070	1.27	12.69	8.86	307.75	Industrial	1.43%
▼ TV PE**	US\$	0.09	-6.25%	-15.89%	-40.00%	-47.98%	100.00%	4,417	2.06	0.00	-	72.62	Mining	2.93%
▼ UNACEMC1 PE**	S/.	1.89	-2.07%	-4.06%	-4.40%	-4.88%	100.00%	83,281	0.60	2.75	9.51	989.91	Industrial	3.00%
▼ VOLCABC1 PE**	S/.	0.44	-5.43%	-0.68%	-19.44%	-2.25%	100.00%	145,519	1.65	0.00	-	1,906.02	Mining	5.90%
- NEXAPEC1 PE**	S/.	3.20	0.00%	0.00%	-8.57%	-7.25%	35.00%	5,059	0.81	0.00	60.06	1,220.44	Mining	1.56%

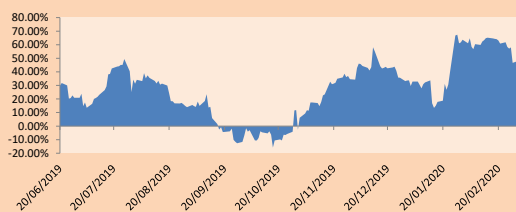
Quantity of shares: 26
Source: Bloomberg, Económica
* Bloomberg Industry Classification System
** PER is used in the stock market and original currency of the instrument
*Legend: Variation 1D: 1 Day; 5D: 5 Days; 1M: 1 Month; YTD: Var.% 12/31/18 to date

Sectorial Indices

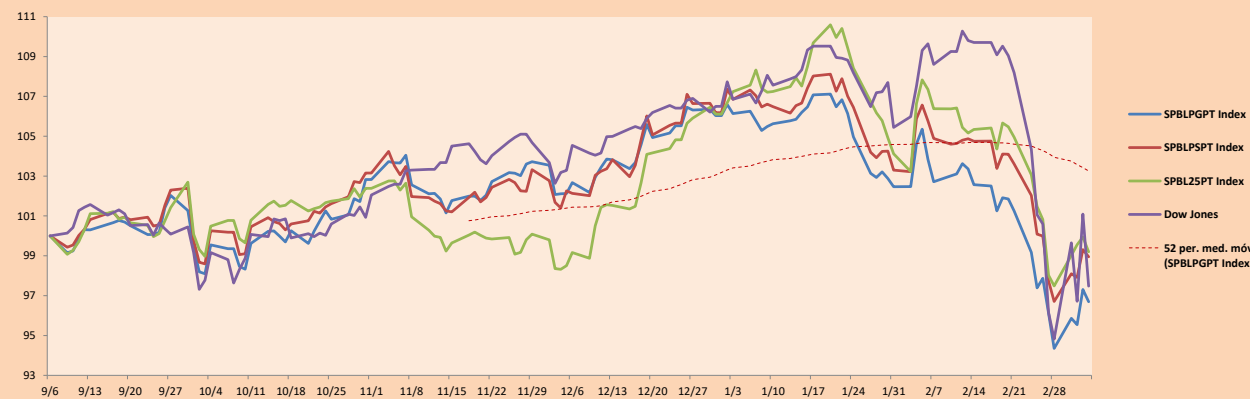
	Close	1D*	5D*	30D*	YTD*	Beta
▼ Mining Index	246.85	-2.34%	-0.29%	-13.54%	-18.98%	1.33
▼ Consumer Index	1,080.18	-2.20%	-1.04%	-9.46%	-5.26%	0.39
▼ Industrial Index	200.12	-2.59%	-0.42%	-5.33%	-5.21%	0.62
▼ Banking and Financial Index	1,088.86	-2.18%	2.79%	-10.40%	-7.69%	1.31
▼ Construction Index	219.45	-1.78%	-0.74%	-4.99%	-3.17%	0.54
▼ Services Index	622.83	-1.72%	-3.01%	-4.15%	-4.40%	0.19
▲ Juniors Index	14.78	0.27%	6.25%	1.86%	2.14%	0.16
▼ Electric Index	608.04	-1.72%	-3.01%	-4.15%	-4.40%	0.19

*Legend: Variation 1D: 1 Day; 5D: 5 Days; 1M: 1 Month; YTD: Var.% 12/31/19 to date

Correlation Graph of Returns of Mining Index against Metallic Index of London (3 months)



Indices (6 months)



Source: Bloomberg

Capital Market Laboratory Coodinator: Economist Bruno Bellido Anicama
Collaboration: Alonso Butter and Luis Davila.
e-mail: pulsobursatil@ulima.edu.pe
facebook: www.facebook.com/pulsobursatil.ul
Phone number : 4376767 Annex: 35340

The content of this document is just for informational purposes. The information and opinions expressed should not be consider as recommendations for future decisions. Under any circumstances, the Capital Market Laboratory of University of Lima will be responsible for the use of the statements in this document.

PULSO BURSÁTIL

SOVEREIGN RATING

RISK RATINGS

Moody's	S&P	Fitch	
Aaa	AAA	AAA	Prime
Aa1	AA+	AA+	High credit quality
Aa2	AA	AA	
Aa3	AA-	AA-	
A1	A+	A+	Medium-high grade, with low credit risk
A2	A	A	
A3	A-	A-	
Baa1	BBB+	BBB+	Moderate Credit Risk
Baa2	BBB	BBB	
Baa3	BBB-	BBB-	
Ba1	BB+	BB+	It has speculative elements and it is subject to substantial credit risk
Ba2	BB	BB	
Ba3	BB-	BB-	
B1	B+	B+	It is considered speculative and it has high credit risk
B2	B	B	
B3	B-	B-	
Caa1	CCC+		Bad credit conditions and it is subject to high credit risk
Caa2	CCC		
Caa3	CCC-	CCC	
Ca	C		Very close to default or in default
		DDD	
C	D	DD D	

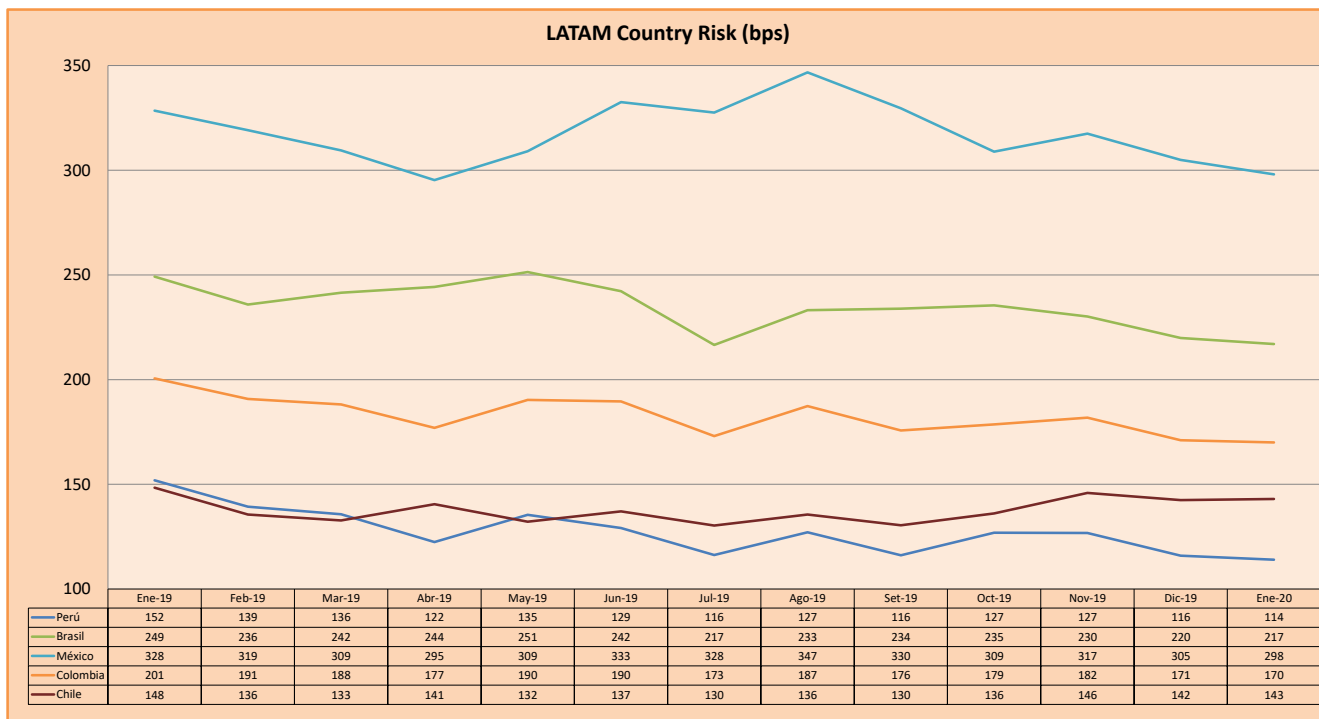
Source: Bloomberg

CREDITC1

Latin America Credit Rating

Country	Clasificadora de riesgo		
	Moody's	Fitch	S&P
Peru	A3	BBB+	BBB+
México	Ba2	BB-	BB-
Venezuela	C	WD	SD
Brazil	Ba2	BB-	BB-
Colombia	Baa2	BBB	BBB-
Chile	A1	A	A+
Argentina	Caa2 *	CC	CCC-
Panama	Baa1	BBB	BBB+

Source: Bloomberg



Source: BCRP

Capital Market Laboratory Coordinator: Economist Bruno Bellido Anicama
 Support: Alonso Butters and Luis Davila.
 e-mail: pulsobursatil@ulima.edu.pe
 facebook: www.facebook.com/pulsobursatil.ul
 Phone number : 4376767 Annex: 35340

The content of this document is just for informational purposes. The information and opinions expressed should not be considered as recommendations for future decisions. Under any circumstances, the Capital Market Laboratory of University of Lima will be responsible for the use of the statements in this document.