

PULSO BURSÁTIL

FACULTAD DE CIENCIAS EMPRESARIALES Y ECONÓMICAS
CARRERA DE ECONOMÍA
LABORATORIO DE MERCADO DE CAPITALES

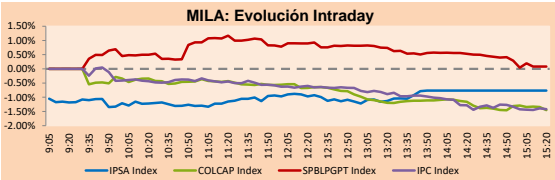


MILA

Lima, november 12, 2020

Main Indexes	Close	1 D	5 D	1 M	YTD	Cap. Burs. (US\$ bill)
▼ IPSA (Chile)	3,916.50	-1.58%	5.74%	7.16%	-16.13%	104.14
▼ IGPA (Chile)	19,601.24	-1.55%	5.26%	5.84%	-16.21%	128.21
▼ COLSC (Colombia)	908.15	-0.67%	1.69%	3.48%	-7.15%	4.97
▼ COLCAP (Colombia)	1,207.21	-1.05%	3.80%	3.12%	-27.38%	71.47
▼ S&P/BVL (Perú)*	17,804.86	-0.18%	-1.29%	-0.09%	-13.26%	89.27
▼ S&P/BVL SEL (Perú)	471.36	-0.31%	-0.57%	-0.93%	-11.30%	72.84
▲ S&P/BVL LIMA 25	22,137.94	0.21%	0.19%	0.07%	-14.04%	88.47
▲ IPC (México)	40,335.95	0.37%	9.31%	5.78%	-7.36%	251.38
▼ S&P MILA 40	457.38	-1.29%	-1.69%	9.61%	-25.41%	207.30

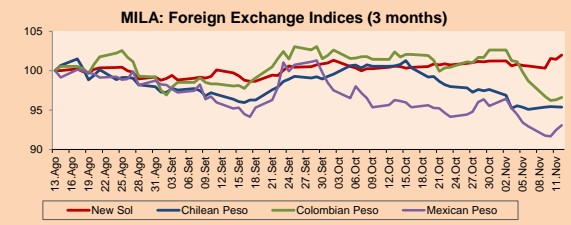
*Legend: Variation 1D: 1 day; 5D: 5 days; 1M: 1 Month; YTD: Var% 12/31/19 to date



Source: Bloomberg

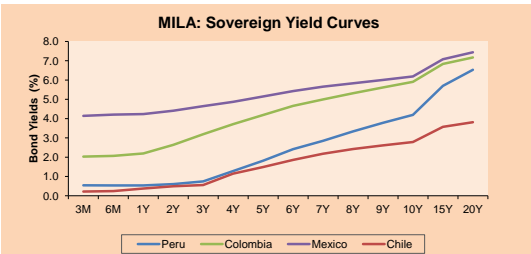
Currency	Price	1D*	5D*	30 D*	YTD*
▲ New Sol (PEN)	3,6424	0.55%	1.32%	1.40%	9.97%
▼ Chilean Peso (CLP)	756.13	-0.03%	0.02%	-5.19%	0.58%
▲ Colombian Peso (COP)	3,643.18	0.30%	-3.22%	-5.67%	11.17%
▲ Mexican Peso (MXN)	20.63	0.85%	-0.37%	-3.34%	9.00%

*Legend: Variation 1D: 1 day; 5D: 5 days; 1M: 1 Month; YTD: Var% 12/31/19 to date



Base: 13/08/20=100
Source: Bloomberg

Fixed Income	Currency	Price	Bid Yield (%)	Ask Yield (%)	Duration
PERU 7.35 07/21/25	USD	128.102	1.21	1.11	4.04
PERU 4.125 08/25/27	USD	117.058	1.50	1.44	6.00
PERU 8.75 11/21/33	USD	169.504	2.51	2.43	8.98
PERU 6.55 03/14/37	USD	152.682	2.62	2.54	10.93
PERU 5.625 11/18/2050	USD	159.971	2.72	2.68	17.65
CHILE 2.25 10/30/22	USD	103.298	0.66	0.45	1.92
CHILE 3.125 01/21/26	USD	110.719	1.04	0.96	4.80
CHILE 3.625 10/30/42	USD	116.44	2.66	2.61	16.00
COLOM 11.85 03/09/28	USD	165.406	2.25	2.04	5.52
COLOM 10.375 01/28/33	USD	160.553	4.13	3.95	8.02
COLOM 7.375 09/18/37	USD	146.939	3.67	3.58	11.02
COLOM 6.125 01/18/41	USD	135.35	3.67	3.60	12.87
MEX 4 10/02/23	USD	135.35	3.672	3.601	12.87
MEX5.55 01/45	USD	129.62	3.71	3.67	14.68



Source: Bloomberg

Equity

Largest gains	Exchange	Currency	Price	▲ %
GRUPO FIN INB-O	Mexico	MXN	18.71	4.47
BANCO SANTANDER	Chile	CLP	33.44	2.01
FALABELLA SA	Chile	CLP	2600.00	2.00
GRUPO BIMBO-A	Mexico	MXN	43.73	1.65
CENCOSUD SA	Chile	CLP	1270.00	1.60

Per Turnover	Exchange	Amount (US\$)
GRUPO F BANORT-O	Mexico	94,939,944
WALMART DE MEXIC	Mexico	34,755,123
SOQUIMICH-B	Chile	22,461,574
AMERICA MOVIL-L	Mexico	22,065,310
FOMENTO ECON-UBD	Mexico	20,851,649

Largest losses	Exchange	Currency	Price	▼ %
CENCOSUD SHOPPIN	Chile	CLP	1175	-7.84
GRUPO F BANORT-O	Mexico	MXN	101.83	-6.16
EMPRESAS COPEC	Chile	CLP	6150	-5.08
FOMENTO ECON-UBC	Mexico	MXN	137.17	-4.88
SMU SA	Chile	CLP	105.01	-4.55

Per Volume	Exchange	Volume
ITAU CORPBANCA	Chile	555,393,713
BANCO SANTANDER	Chile	269,776,593
BANCO DE CHILE	Chile	93,614,352
ENEL AMERICAS SA	Chile	80,025,845
ENEL CHILE SA	Chile	62,133,183

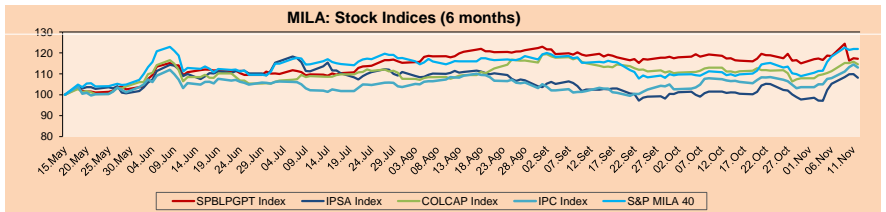
MILA

Peru: The General Index of the BVL closed today's session with a negative result of -0.18%. The index maintains an annual accumulated negative trend of -13.26% in local currency, while the adjusted return in dollars amounts to -21.12%. Then, the S&P / BVL Peru SEL varied by -0.31% while the S&P / BVL LIMA 25 by +0.21%. The PEN spot reached 5 / 3.6410. Headline: Exchange rate shoots up to 5 / 3,641 at the close, a level not seen in 18 years

Chile: The IPSA index closed the day with a negative return of -1.58%. The sectors most affected in the session were Energy (-5.08%) and Real Estate (-5.02%). The worst performing stocks were Cencosud Shopping SA (-7.84%) and Empresas COPEC SA (-5.08%). Headline: Chilean Codeco will extend the exploitation of the Chuquicamatá pit for one more year

Colombia: The COLCAP index closed the day with a negative return of -1.05%. The sectors most affected during the day were First Needs Products (-2.72%) and Energy (-1.85%). The worst performing stocks were Ecopetrol SA (-2.82%) and BanColombia SA (-2.61%). Headline: Colombia worsens its projection on economic growth for this year

Mexico: The IPC index closed the day with a negative return of -1.28%. The sectors most affected during the session were Finance (-3.59%) and Basic Products (-1.27%). The worst performing stocks were Grupo Financiero Banorte SA (-6.16%) and Fomento Economico Mexicano (-4.88%). Headline: Central Bank of Mexico maintains key rate at 4.25%, while waiting for inflation to meet target

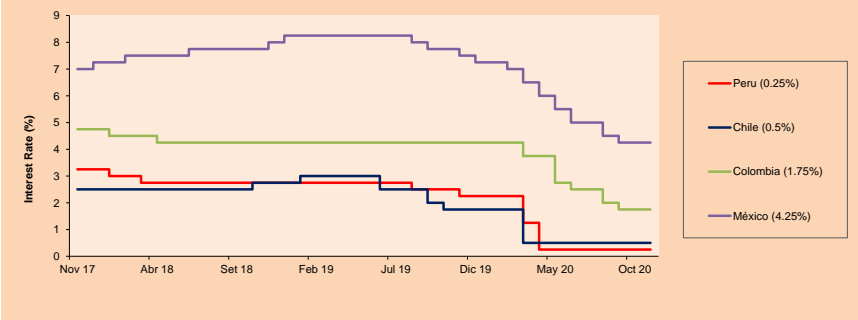


Base: 18/05/20=100
Source: Bloomberg

ETFs

ETFs	Curr.	Close	1D	5D	30 D	YTD	Exchange
▼ iShares MSCI All Peru Caped Index Fund	USD	29.93	-1.29%	-1.69%	-0.97%	-19.22%	NYSE Arca
▼ iShares MSCI All Chile Caped Index Fund	USD	26.43	-3.61%	4.34%	11.05%	-20.70%	Cboe BZX
▼ Global X MSCI Colombia	USD	9.08	-1.73%	6.26%	9.53%	-34.68%	NYSE Arca
▼ iShares MSCI Mexico Capped	USD	38.19	-2.28%	4.74%	8.83%	-15.19%	NYSE Arca
▼ iShares MSCI Emerging Markets	USD	47.66	-0.75%	-0.10%	3.52%	6.22%	NYSE Arca
▼ Vanguard FTSE Emerging Markets	USD	46.54	-0.75%	-0.34%	3.15%	4.65%	NYSE Arca
▼ iShares Core MSCI Emerging Markets	USD	57.06	-0.73%	-0.04%	3.73%	6.14%	NYSE Arca
▼ iShares JP Morgan Emerging Markets Bonds	USD	58.56	-0.44%	1.24%	3.24%	-0.17%	Cboe BZX
▲ Morgan Stanley Emerging Markets Domestic	USD	5.91	0.51%	3.14%	4.42%	-15.45%	New York

MILA: Policy Rate



Source: Bloomberg

Capital Market Laboratory Coordinator: Economist Bruno Bellido
Collaboration: Piero Best, Luis Davila, Laura Delgado and Alonso Hernández
email: pulsobursatil@ulima.edu.pe
facebook: www.facebook.com/pulsobursatil.ul

The content of this document is just for informational purposes. The information and opinions expressed should not be considered as recommendations for future decisions. Under any circumstances, the Capital Market Laboratory of University of Lima will be responsible for the use of the statements in this document.

WORLD

Main Indices	Close	1 D*	5 D*	1 M*	YTD*	Market Cap. (US\$ Mill.)
▼ Dow Jones (USA)	29,080.17	-1.08%	2.43%	1.40%	1.50%	9,058,341
▼ Standard & Poor's 500 (EEUU)	3,537.01	-1.00%	0.76%	0.71%	9.48%	30,601,977
▼ NASDAQ Composite (USA)	11,709.59	-0.65%	-1.53%	-1.30%	30.50%	18,783,410
▼ Stoxx EUROPE 600 (Europe)	385.16	-0.88%	4.91%	3.83%	-7.38%	8,916,675
▼ DAX (Germany)	13,052.95	-1.24%	3.86%	0.26%	-1.48%	1,011,539
▼ FTSE 100 (United Kingdom)	6,338.94	-0.68%	7.33%	6.19%	-15.96%	1,328,998
▼ CAC 40 (France)	5,362.57	-1.52%	7.60%	8.39%	-10.30%	1,458,572
▼ IBEX 35 (Spain)	7,726.00	-0.87%	11.58%	12.37%	-19.09%	429,205
▲ MSCI AC Asia Pacific Index	184.95	0.25%	2.11%	4.42%	8.37%	23,512,831
▲ HANG SENG (Hong Kong)	26,169.38	-0.22%	1.84%	6.04%	-7.28%	3,678,367
▲ SHANGHAI SEC Comp. (China)	3,338.68	-0.11%	0.56%	-1.34%	8.69%	6,108,414
▲ NIKKEI 225 (Japan)	25,520.88	0.68%	5.87%	6.97%	6.72%	3,675,273
▲ S&P / ASX 200 (Australia)	6,418.22	-0.49%	4.54%	3.20%	-4.34%	1,461,665
▲ KOSPI (South Korea)	2,475.62	-1.28%	5.04%	3.07%	12.71%	1,460,901

*Legend: Variation 1D: 1 Day; 5D: 5 Days; 1M: 1 Month; YTD: Var.% 12/31/19 to date

Equity

Germany (Stocks from DAX Index)	Current	Price	▲ %	Exchange	Largest losses	Current	Price	▼ %	Exchange
DHER GY	EUR	105.9	0.86	Xetra	IFX GY	EUR	26.135	-2.52	Xetra
BMW GY	EUR	70.7	0.51	Xetra	EOAN GY	EUR	9.262	-2.30	Xetra
DB1 GY	EUR	133.35	0.45	Xetra	ADS GY	EUR	274	-1.90	Xetra
RWE GY	EUR	34.31	0.41	Xetra	LIN GY	EUR	217.8	-1.89	Xetra

Europe (Stocks from STOXX EUROPE 600)	Current	Price	▲ %	Exchange	Largest losses	Current	Price	▼ %	Exchange
AMBUD DC	DKK	208.5	5.65	Copenhagen	LPP PW	PLN	7215	-5.19	Warsaw
UBI FP	EUR	78.92	4.61	EN Paris	COCL LN	Gbp	1067	-5.03	Londres
UTDI GY	EUR	32.01	4.54	Xetra	VARI GY	EUR	116	-4.61	Xetra
SINCH SS	SEK	945	4.30	Stockholm	AMS SQ	EUR	56.16	-4.49	Soc.Bol SIBE

Global Overview:

United States:

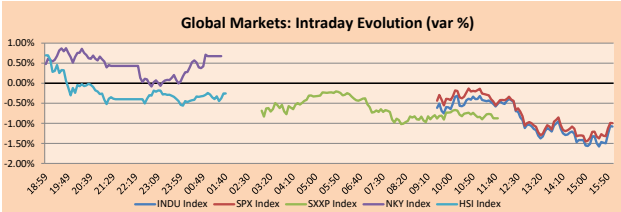
US markets closed with negative returns as fears resurfaced over the growing wave of coronavirus infections in the United States. Added to this is the new round of restrictions imposed yesterday by New York Governor, Andrew Cuomo, to curb the spread of the coronavirus, as the infection rate increased and hospitalizations skyrocketed in the state by maintaining a number of infected greater than 100,000 for the eighth consecutive day. On the other hand, the new measures, which will take effect on Friday, came a day after California and several states in the western United States tightened restrictions on residents to try to slow the rapid spread of the virus. On the other hand, jobless claims in the United States fell to a seven-month low last week, but the pace of job recovery slowed as hopes for fiscal stimulus waned. Consequently, the SPY ETF and SPRLCM materials index fell by -3.39% and -1.37%, as well as the SPCOMAIR airline index -3.1% and the cruise operators Royal Caribbean Cruises Ltd by -3.92% and Carnival Corp by -7.90% Y. In this way, the main indices S&P 500 -1.00%, DJIA -1.08% and NASDAQ -0.65% closed lower.

Europe:

European markets ended trading with negative returns, as hope for the COVID-19 vaccine deteriorates and economic data is reported. The optimism resulting from the statement from the pharmaceutical company Pfizer and BioNTech at the beginning of the week, and which generated certain profits, began to dissipate after registering an increase in confirmed cases of coronavirus in the continent. In France, the number of infected rose to 1.86 million yesterday, surpassing the levels seen in Russia and becoming the most impacted country in Europe. For its part, Italy reached levels above a million cases for the first time and the United Kingdom became the first country in Europe to exceed more than 50,000 deaths. As for economic data, preliminary numbers indicated that the UK economy grew 15.5% in the last quarter, slightly less than economists' expectations of 15.8%. So far this year, the country's GDP remains 9.7% below its December 2019 level, according to CNBC. Thus, the STOXX 600 -0.88%, CAC 40 -1.52%, DAX -1.24%, FTSE 100 -0.68% and MIB -0.83% closed in negative territory, among other indices.

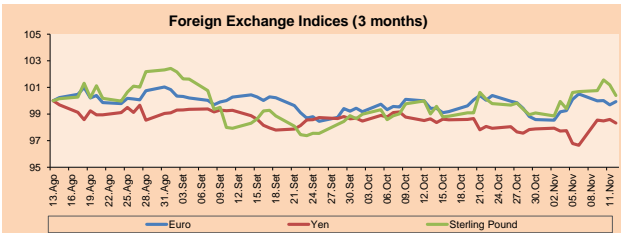
Asia:

Asian markets closed today's session mostly with mixed results as recent data reveals low growth in bank loans for the past month. In China, lenders issued just 689.8 billion yuan (\$ 104.22 billion) in new yuan loans last month, data from the People's Bank of China showed, down from 1.9 trillion yuan in September and well below analysts' expectations of 800 billion yuan. However, analysts say that while credit has started to slow, appetite for bond and equity issuance among private companies is picking up as confidence in the outlook returns. In Japan, stocks hit a nearly 29 1/2 year high as the tech sector rallied after its US peers took the Nasdaq higher. Elsewhere, Istan Mitsubishi Holdings fell -5.79% after reporting its semi-annual net loss of 36.79 billion yen (\$ 349.48 million). Thus, the main indices Nikkei 225 + 0.68%, Hang Seng -0.22%, ASX 200 -4.67%, CSI 300 + 0.07% and Shanghai Composite -0.11% closed with mixed results.



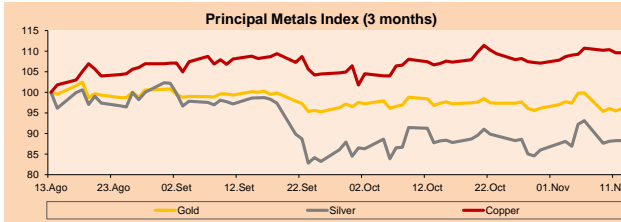
Currency	Price	1 D*	5 D*	1 M*	YTD*
▲ Euro	1.1806	0.25%	-0.17%	0.51%	5.29%
▲ Yen	105.1300	-0.28%	1.58%	-0.33%	-3.20%
▼ Sterling Pound	1.3118	-0.79%	-0.23%	1.40%	-1.05%
▼ Yuan	6.6130	-0.27%	0.10%	-1.98%	-5.03%
▼ Hong Kong Dollar	7.7541	-0.01%	0.02%	0.05%	-0.48%
▲ Brazilian Real	5.4575	1.07%	-1.49%	-2.04%	35.41%
▲ Argentine Peso	79.5629	0.09%	0.59%	2.78%	32.89%

*Legend: Variation 1D: 1 Day; 5D: 5 Days; 1M: 1 Month; YTD: Var.% 12/31/19 to date

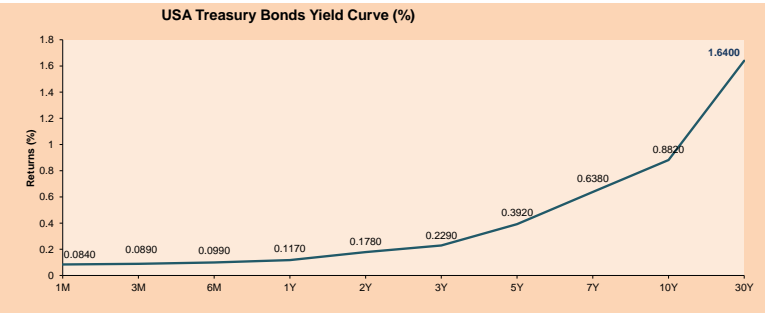


Commodities	Close	1 D*	5 D*	1 M*	YTD*
▲ Oro (US\$ Oz. T) (LME)	1,876.83	0.59%	-3.74%	-0.77%	23.70%
▲ Plata (US\$ Oz. T) (LME)	24.28	0.02%	-4.30%	0.59%	38.01%
- Cobre (US\$ TM) (LME)	6,866.00	0.00%	0.34%	2.76%	11.68%
- Zinc (US\$ TM) (LME)	2,608.00	0.00%	0.12%	8.69%	24.14%
▼ Petróleo WTI (US\$ Barril) (NYM)	41.12	-0.80%	6.01%	1.56%	-17.41%
- Etano (US\$ TM) (LME)	18,202.33	0.00%	-0.23%	-0.22%	5.96%
- Plomo (US\$ TM) (LME)	1,855.50	0.00%	1.16%	3.74%	-3.03%
▲ Azúcar #11 (US\$ Libra) (NYB-ICE)	14.92	2.97%	3.04%	6.50%	3.76%
▼ Cacao (US\$ TM) (NYB-ICE)	2,356.00	-0.76%	1.64%	-0.88%	-3.13%
▲ Café Arabica (US\$ TM) (NYB-ICE)	112.95	0.89%	4.15%	0.31%	-19.35%

*Legend: Variación 1D: 1 Día; 5D: 5 Días; 1M: 1 Mes; YTD: Var.% 31/12/19 a la fecha



ETFs	Curr.	Close	1D	5D	30 D	YTD	Exchange
SPDR S&P 500 ETF TRUST	USD	353.21	-0.97%	0.65%	0.68%	9.74%	NYSE Arca
ISHARES MSCI EMERGING MARKET	USD	47.66	-0.75%	-0.10%	3.52%	6.22%	NYSE Arca
ISHARES IBOXX HIGH YLD CORP	USD	85.15	-0.68%	-0.44%	0.18%	-3.17%	NYSE Arca
FINANCIAL SELECT SECTOR SPDR	USD	26.59	-1.66%	5.68%	6.27%	-13.61%	NYSE Arca
VANECK GOLD MINERS	USD	37.49	0.92%	-0.95%	-6.86%	28.04%	NYSE Arca
ISHARES RUSSELL 2000 ETF	USD	169.98	-1.94%	3.07%	4.47%	2.60%	NYSE Arca
SPDR GOLD SHARES	USD	175.96	0.61%	-3.81%	-0.99%	23.14%	NYSE Arca
ISHARES 20+ YEAR TREASURY BO	USD	158.37	1.70%	-1.85%	-2.09%	16.90%	NASDAQ GM
INVESTCO QQQ TRUST SERIES 1	USD	288.40	-0.47%	-2.03%	-2.08%	35.65%	NASDAQ GM
ISHARES NASDAQ BIOTECHNOLOGY	USD	139.53	0.01%	-0.78%	-3.33%	15.78%	NASDAQ GM
ENERGY SELECT SECTOR SPDR	USD	32.69	-3.23%	10.55%	7.57%	-45.55%	NYSE Arca
PROSHARES ULTRA VIX ST FUTUR	USD	14.37	10.03%	-11.35%	-13.80%	11.48%	NYSE Arca
UNITED STATES OIL FUND LP	USD	28.66	-1.31%	5.52%	0.70%	-72.03%	NYSE Arca
ISHARES MSCI BRAZIL ETF	USD	30.74	-3.24%	2.88%	5.82%	-35.22%	NYSE Arca
SPDR S&P OIL & GAS EXP & PR	USD	46.34	-4.02%	10.65%	5.61%	-51.12%	NYSE Arca
UTILITIES SELECT SECTOR SPDR	USD	66.44	-1.61%	1.82%	3.15%	1.27%	NYSE Arca
ISHARES US REAL ESTATE ETF	USD	83.75	-1.20%	2.86%	1.15%	-10.02%	NYSE Arca
SPDR S&P BIOTECH ETF	USD	123.73	0.86%	0.72%	1.25%	30.09%	NYSE Arca
ISHARES IBOXX INVESTMENT GRA	USD	135.60	0.40%	-0.75%	0.01%	5.97%	NYSE Arca
ISHARES JP MORGAN USD EMERGI	USD	113.39	-0.19%	0.11%	0.84%	-1.02%	NASDAQ GM
REAL ESTATE SELECT SECT SPDR	USD	36.67	-1.03%	2.52%	0.49%	-5.17%	NYSE Arca
ISHARES CHINA LARGE-CAP ETF	USD	47.10	-1.05%	-1.26%	6.22%	7.95%	NYSE Arca
CONSUMER STAPLES SPDR	USD	66.61	-0.27%	2.81%	0.24%	5.76%	NYSE Arca
VANECK JR GOLD MINER	USD	53.49	1.13%	-10.10%	-8.17%	28.57%	NYSE Arca
SPDR BBG BARC HIGH YIELD BND	USD	106.10	-0.56%	-0.35%	0.44%	-3.14%	NYSE Arca
VANGUARD REAL ESTATE ETF	USD	83.16	-1.31%	3.37%	1.44%	-10.38%	NYSE Arca
GRAYSACLE BITCOIN TRUST BTC	USD	18.24	4.08%	5.62%	47.33%	122.71%	OTC US



LIMA

Stocks

Ticker	Currency	Price	1D*	5D*	30D*	YTD*	Frequency	Volume (US\$)	Beta	Dividend Yield (%)	Price Earning	Market Cap. (M US\$)	Economic Sector*	Index Weight
▼ ALICORC1 PE**	S/.	7.00	-0.67%	1.69%	3.48%	-7.15%	95.00%	600,203	0.78	3.57	16.10	1,640.31	Industrial	3.53%
▲ ATACOCB1 PE**	S/.	0.12	0.00%	0.81%	-3.13%	-24.85%	40.00%	3,445	1.04	0.00	-	32.16	Mining	1.02%
▲ BACKUSI1 PE**	S/.	19.80	1.54%	-1.00%	4.21%	-30.53%	95.00%	17,886	0.51	3.30	5.84	8,226.33	Industrial	0.82%
▲ BAP PE**	US\$	119.36	0.18%	-2.20%	-2.16%	-43.88%	100.00%	1,057,894	1.49	7.37	-	11,265.47	Diverse	5.82%
▼ BVN PE**	US\$	11.50	-3.12%	-9.52%	-6.12%	-24.84%	100.00%	284,892	1.49	0.23	-	3,169.80	Mining	5.88%
▼ CASAGRC1 PE**	S/.	4.80	9.34%	0.00%	17.07%	58.42%	90.00%	53,198	0.54	2.23	8.62	111.01	Agricultural	1.31%
▼ BBVAC1 PE**	S/.	2.22	-1.33%	6.22%	5.71%	-28.20%	95.00%	147,640	0.72	3.89	11.55	3,979.45	Finance	2.85%
▼ CORAREI1 PE**	S/.	0.81	2.53%	-1.22%	14.08%	-10.99%	85.00%	23,390	0.71	8.99	5.76	316.20	Industrial	1.72%
- CPACASC1 PE**	S/.	5.53	0.00%	0.55%	0.55%	-10.08%	95.00%	140,990	0.61	6.51	17.84	649.96	Industrial	2.38%
- CVERDEC1 PE**	US\$	18.90	0.00%	0.00%	5.00%	-2.07%	100.00%	158,344	0.76	0.00	45.62	6,616.06	Mining	5.25%
- ENGEPEC1 PE**	S/.	2.00	0.00%	0.00%	0.00%	-13.04%	50.00%	3,007	0.49	0.00	10.05	1,558.73	Public Services	1.44%
▼ ENDISPC1**	S/.	5.09	-0.20%	-2.12%	0.79%	-30.75%	55.00%	79,050	0.46	0.40	9.60	892.35	Public Services	0.98%
▲ FERREYC1 PE**	S/.	1.73	1.17%	2.37%	3.59%	-21.00%	100.00%	185,292	0.75	4.43	34.73	463.41	Diverse	4.90%
▲ GRAMONC1 PE**	S/.	1.56	2.63%	9.09%	-2.50%	-8.24%	95.00%	136,958	0.73	0.00	-	373.43	Diverse	4.05%
▼ IFS PE**	US\$	20.51	-1.58%	-1.87%	-13.46%	-49.85%	95.00%	334,810	1.16	8.53	19.78	2,367.83	Diverse	7.22%
- INRETC1 PE**	US\$	33.05	0.00%	-3.11%	1.69%	-8.19%	95.00%	1,072,605	0.61	1.71	27.72	3,397.78	Diverse	5.28%
▼ LUSURC1 PE**	S/.	26.00	-0.04%	0.00%	-5.63%	0.97%	80.00%	548,493	0.51	2.50	22.05	3,475.93	Public Services	1.81%
▼ MINSUR1 PE**	S/.	1.65	-1.20%	-2.94%	-2.94%	5.77%	60.00%	3,246	0.73	0.00	-	1,305.99	Mining	3.09%
▼ PML PE**	US\$	0.08	-8.89%	-3.53%	-6.82%	46.43%	55.00%	20,967	1.26	0.00	-	21.65	Mining	2.12%
- RELAPAC1 PE**	S/.	0.07	0.00%	0.00%	0.00%	-47.15%	50.00%	18,233	0.71	0.00	-	148.46	Industrial	2.12%
▲ SCCO PE**	US\$	53.83	0.15%	-0.96%	13.81%	26.87%	95.00%	144,554	0.86	2.79	31.36	41,614.54	Mining	2.14%
▲ SIDERC1 PE**	S/.	0.77	1.32%	1.32%	14.93%	-13.48%	100.00%	10,094	0.87	44.45	9.15	259.58	Industrial	1.43%
- TV PE**	US\$	0.12	0.00%	1.69%	16.50%	-30.64%	90.00%	1,000	1.47	0.00	-	96.31	Mining	2.93%
▼ UNACEMC1 PE**	S/.	1.33	-1.48%	2.31%	-2.92%	-33.50%	95.00%	197,645	0.85	1.95	64.71	663.88	Industrial	3.00%
▼ VOLCABC1 PE**	S/.	0.38	-0.26%	-0.26%	-3.56%	-14.83%	100.00%	158,163	0.88	0.00	-	1,734.08	Mining	5.90%
- NEXAPEC1 PE**	S/.	2.57	0.00%	6.64%	-1.53%	-25.51%	45.00%	212	0.99	0.00	-	933.08	Mining	1.56%

Quantity of shares: 26

Source: Bloomberg, Economática

* Bloomberg Industry Classification System

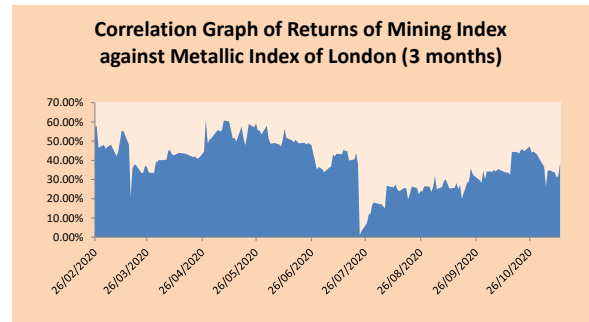
** PER is used in the stock market and original currency of the instrument

*Legend: Variation 1D: 1 Day; 5D: 5 Days; 1M: 1 Month; YTD: Var.% 12/31/18 to date

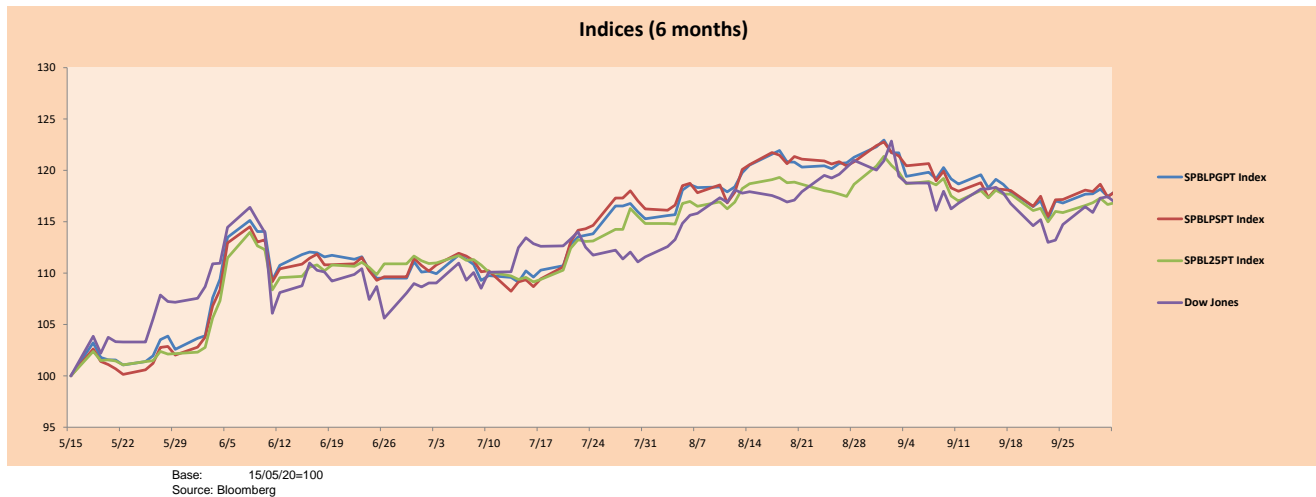
Sectorial Indices

	Close	1D*	5D*	30D*	YTD*	Beta
▼ Mining Index	337.71	-0.49%	-2.01%	6.89%	10.85%	1.06
▲ Consumer Index	1,001.93	0.62%	-0.93%	-1.86%	-12.13%	0.43
▲ Industrial Index	174.14	0.09%	2.77%	0.90%	-17.52%	0.58
▲ Banking and Financial Index	776.11	0.48%	-0.61%	-1.50%	-34.21%	1.51
▼ Construction Index	188.07	-0.35%	2.97%	-0.20%	-17.01%	0.55
▼ Services Index	608.49	-0.04%	-0.23%	-2.90%	-6.60%	0.08
▼ Electric Index	594.03	-0.04%	-0.23%	-2.90%	-6.60%	0.08

*Legend: Variation 1D: 1 Day; 5D: 5 Days; 1M: 1 Month; YTD: Var.% 12/31/19 to date



Indices (6 months)



Base: 15/05/20=100
Source: Bloomberg

Capital Market Laboratory Coordinator: Economist Bruno Bellido
Collaboration: Piero Best, Luis Davila, Laura Delgado and Alonso Hernández
email: pulsohorsatil@ulima.edu.pe
facebook: www.facebook.com/pulsohorsatil.ul

The content of this document is just for informational purposes. The information and opinions expressed should not be consider as recommendations for future decisions. Under any circumstances, the Capital Market Laboratory of University of Lima will be responsible for the use of the statements in this document.

SOVEREIGN RATING

RISK RATINGS

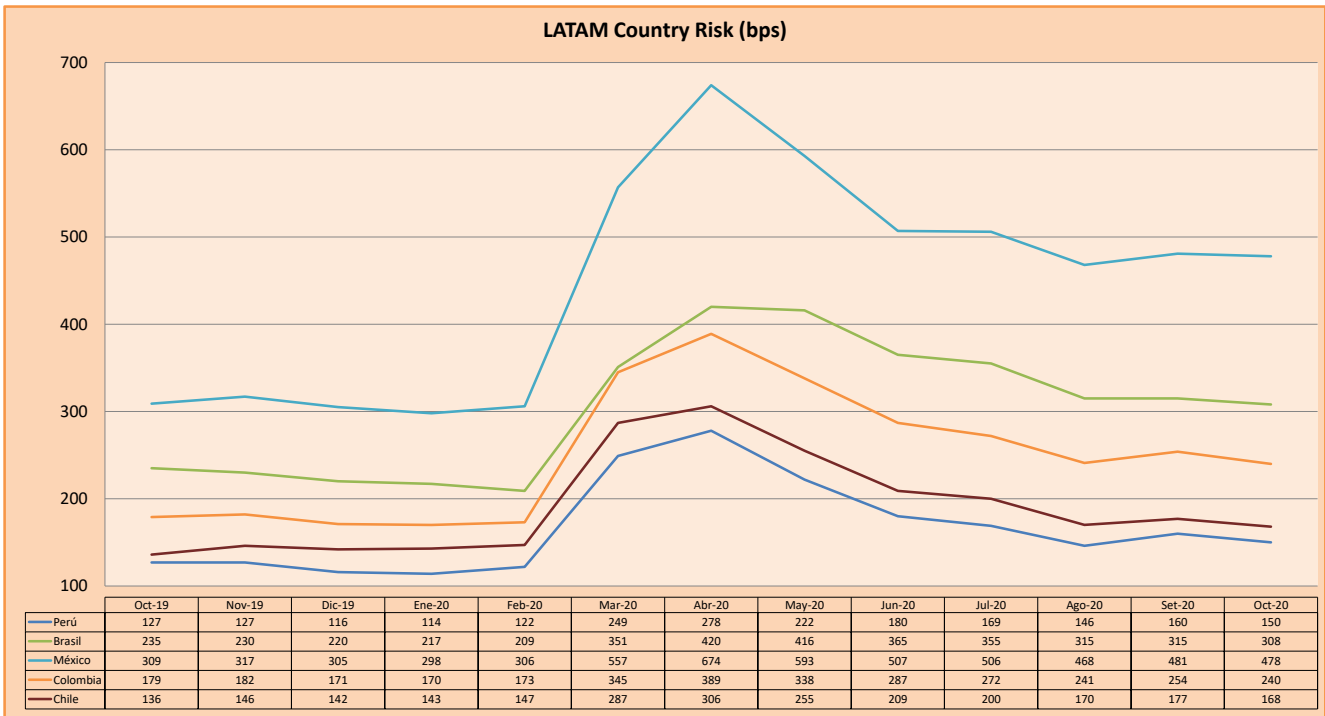
Moody's	S&P	Fitch	
Aaa	AAA	AAA	Prime
Aa1	AA+	AA+	High credit quality
Aa2	AA	AA	
Aa3	AA-	AA-	
A1	A+	A+	Medium-high grade, with low credit risk
A2	A	A	
A3	A-	A-	
Baa1	BBB+	BBB+	Moderate Credit Risk
Baa2	BBB	BBB	
Baa3	BBB-	BBB-	
Ba1	BB+	BB+	It has speculative elements and it is subject to substantial credit risk
Ba2	BB	BB	
Ba3	BB-	BB-	
B1	B+	B+	It is considered speculative and it has high credit risk
B2	B	B	
B3	B-	B-	
Caa1	CCC+		Bad credit conditions and it is subject to high credit risk
Caa2	CCC		
Caa3	CCC-	CCC	
Ca	C		Very close to default or in default
		DDD	
C	D	DD D	

Source: Bloomberg

Latin America Credit Rating			
Clasificadora de riesgo			
Country	Moody's	Fitch	S&P
Peru	A3	BBB+	BBB+
México	Ba2	BB-	BB-
Venezuela	C	WD	SD
Brazil	Ba2	BB-	BB-
Colombia	Baa2	BBB-	BBB-
Chile	A1	A-	A+
Argentine	Ca	WD	CCC+
Panama	Baa1	BBB	BBB+

Source: Bloomberg

LATAM Country Risk (bps)



Source: BCRP

Capital Market Laboratory Coordinator: Economist Bruno Bellido
Collaboration: Piero Best, Luis Davila, Laura Delgado and Alonso Hernández
email: pulsobursatil@ulima.edu.pe
facebook: www.facebook.com/pulsobursatil.ul