

PULSO BURSÁTIL

FACULTAD DE CIENCIAS EMPRESARIALES Y ECONÓMICAS
CARRERA DE ECONOMÍA
LABORATORIO DE MERCADO DE CAPITALES

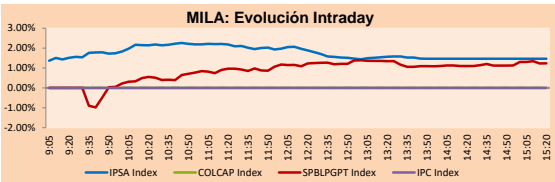


MILA

Lima, november 16, 2020

Main Indexes	Close	1 D	5 D	1 M	YTD	Cap. Burs. (US\$ bill)
▲ IPSA (Chile)	4,047.42	1.05%	3.03%	11.18%	-13.33%	103.04
▲ IGPA (Chile)	20,200.04	1.03%	2.57%	9.44%	-13.65%	127.51
▲ COLSC (Colombia)	908.93	0.09%	1.44%	3.55%	-7.07%	4.95
▲ COLCAP (Colombia)	1,209.87	0.22%	3.20%	3.25%	-27.22%	70.94
▲ S&P/BVL (Perú)*	18,290.33	1.34%	-3.21%	3.53%	-10.89%	91.29
▲ S&P/BVL SEL (Perú)	484.43	0.98%	-2.30%	3.42%	-8.84%	74.82
▲ S&P/BVL LIMA 25	22,527.34	0.73%	-1.96%	2.98%	-12.52%	90.50
▲ IPC (México)	40,791.81	0.91%	-0.25%	7.70%	-6.31%	257.79
▲ S&P MILA 40	458.76	0.20%	-4.07%	11.40%	-23.93%	208.74

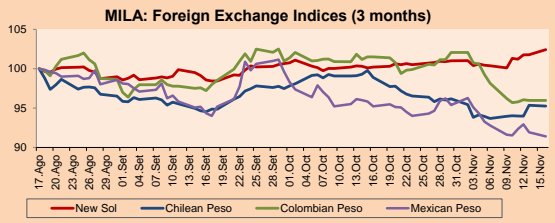
*Legend: Variation 1D: 1 day; 5D: 5 days; 1M: 1 Month; YTD: Var% 12/31/19 to date



Source: Bloomberg

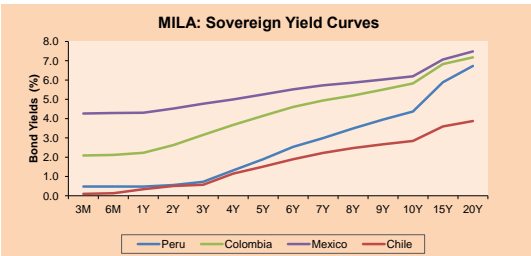
Currency	Price	1D*	5D*	30 D*	YTD*
▲ New Sol (PEN)	3,6657	0.62%	2.31%	2.20%	10.67%
▼ Chilean Peso (CLP)	766.55	-0.09%	1.39%	-3.68%	1.97%
- Colombian Peso (COP)	3,639.63	0.00%	-0.25%	-5.45%	11.06%
▼ Mexican Peso (MXN)	20.29	-0.57%	-0.23%	-4.01%	7.21%

*Legend: Variation 1D: 1 day; 5D: 5 days; 1M: 1 Month; YTD: Var% 12/31/19 to date



Base: 17/08/20=100
Source: Bloomberg

Fixed Income	Currency	Price	Bid Yield (%)	Ask Yield (%)	Duration
PERU 7.35 07/21/25	USD	127.88	1.24	1.16	4.03
PERU 4.125 08/25/27	USD	116.806	1.54	1.47	5.99
PERU 8.75 11/21/33	USD	168.882	2.55	2.48	8.99
PERU 6.55 03/14/37	USD	151.459	2.68	2.62	10.95
PERU 5.625 11/18/2050	USD	158.411	2.77	2.73	17.74
CHILE 2.25 10/30/22	USD	103.319	0.64	0.43	1.91
CHILE 3.125 01/21/26	USD	110.702	1.04	0.95	4.79
CHILE 3.625 10/30/42	USD	116.047	2.68	2.63	16.02
COLOM 11.85 03/09/28	USD	165.478	2.24	2.02	5.51
COLOM 10.375 01/28/33	USD	160.332	4.14	3.97	8.03
COLOM 7.375 08/18/37	USD	146.773	3.68	3.59	11.02
COLOM 6.125 01/18/41	USD	135.246	3.68	3.61	12.86
MEX 4 10/02/23	USD	135.246	3.675	3.609	12.86
MEX5.55 01/45	USD	129.029	3.74	3.70	14.69



Source: Bloomberg

Equity

Largest gains	Exchange	Currency	Price	▲ %
SOQUIMICH-B	Chile	CLP	34470.00	3.76
CENCOSUD SA	Chile	CLP	1345.00	3.62
SMU SA	Chile	CLP	111.56	3.30
ITAU CORPBANCA	Chile	CLP	2.10	2.94
PARQUE ARAUCO	Chile	CLP	1100.00	2.80

Per Turnover	Exchange	Amount (US\$)
CENCOSUD SA	Chile	30,634,884
SOQUIMICH-B	Chile	24,073,668
FALABELLA SA	Chile	19,981,880
BANCO DE CHILE	Chile	19,400,039
EMPRESAS COPEC	Chile	14,386,524

Largest losses	Exchange	Currency	Price	▼ %
VOLCAN CIA MIN-B	Peru	PEN	0.37	-2.12
BANCO CRED INVER	Chile	CLP	26500	-1.78
ENTEL	Chile	CLP	4680	-1.47
AGUAS ANDINAS-A	Chile	CLP	193.5	-1.28
ENEL AMERICAS SA	Chile	CLP	114.42	-0.85

Per Volume	Exchange	Volume
ITAU CORPBANCA	Chile	1,262,193,549
BANCO SANTANDER	Chile	232,850,416
BANCO DE CHILE	Chile	204,530,595
ENEL AMERICAS SA	Chile	94,169,870
ENEL CHILE SA	Chile	57,666,415

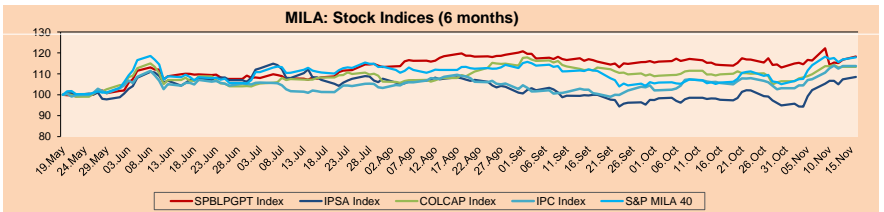
MILA

Peru: The General Index of the BVL closed today's session with a positive result of +1.34%. The index maintains an annual accumulated negative trend of -10.89% in local currency, while the adjusted return in dollars amounts to -19.48%. Then, the S&P / BVL Peru SEL varied by +0.98% while the S&P / BVL LIMA 25 by +0.73%. The PEN spot reached 5 / 3.6657. Headline: Lima Stock Exchange closes green in line with Wall Street due to optimism about COVID-19 vaccine.

Chile: The IPSA index closed the day with a positive return of +1.05%. The sectors that benefited the most during the day were Basic Products (+2.58%) and Materials (+2.52%). The stocks with the best performance were Sociedad Química y Minera de Chile (+3.76%) and Cencosud SA (+3.62%). Headline: Enel Green Power Chile will build a photovoltaic project with an investment of US \$ 130M.

Colombia: The COLCAP index did not open due to a public holiday.

Mexico: The MEXBOL index did not open due to a public holiday.

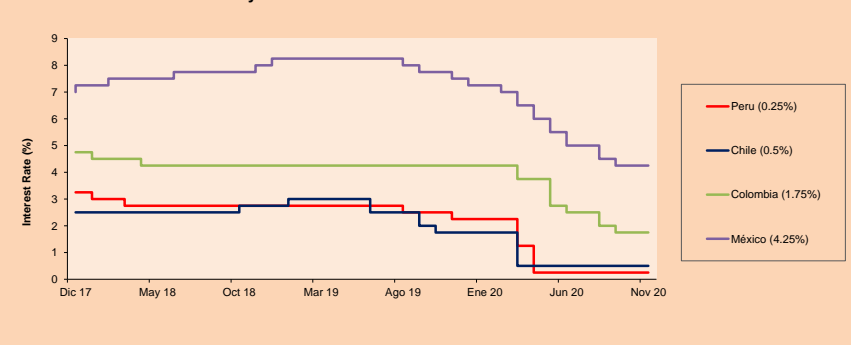


Base: 20/05/20=100
Source: Bloomberg

ETFs

ETFs	Curr.	Close	1D	5D	30 D	YTD	Exchange
▲ iShares MSCI All Peru Caped Index Fund	USD	30.65	0.20%	-4.06%	2.00%	-17.27%	NYSE Arca
▲ iShares MSCI All Chile Caped Index Fund	USD	27.55	2.11%	2.99%	15.32%	-17.34%	Cboe BZX
▲ Global X MSCI Colombia	USD	9.34	1.95%	2.32%	12.22%	-32.81%	NYSE Arca
▲ iShares MSCI Mexico Capped	USD	40.51	3.42%	6.07%	14.89%	-10.04%	NYSE Arca
▲ iShares FTSE Emerging Markets	USD	48.93	1.24%	1.39%	7.40%	9.05%	NYSE Arca
▲ Vanguard FTSE Emerging Markets	USD	47.68	1.17%	0.97%	6.57%	7.22%	NYSE Arca
▲ iShares Core MSCI Emerging Markets	USD	58.6	1.30%	1.40%	7.58%	9.00%	NYSE Arca
▲ iShares JP Morgan Emerging Markets Bonds	USD	59.6	1.00%	2.05%	5.97%	1.60%	Cboe BZX
▲ Morgan Stanley Emerging Markets Domestic	USD	6	1.01%	2.21%	6.01%	-14.16%	New York

MILA: Policy Rate



Source: Bloomberg

Capital Market Laboratory Coordinator: Economist Bruno Bellido
Collaboration: Piero Best, Luis Davila, Laura Delgado and Alonso Hernández
email: pulsobursatil@ulima.edu.pe
facebook: www.facebook.com/pulsobursatil.ul

The content of this document is just for informational purposes. The information and opinions expressed should not be considered as recommendations for future decisions. Under any circumstances, the Capital Market Laboratory of University of Lima will be responsible for the use of the statements in this document.

WORLD

Main Indices	Close	1 D*	5 D*	1 M*	YTD*	Market Cap. (US\$ Mill.)
▲ Dow Jones (USA)	29,950.44	1.60%	2.72%	4.70%	4.95%	9,144,848
▲ Standard & Poor's 500 (EEUU)	3,626.91	1.16%	2.15%	4.11%	12.26%	31,020,376
▲ NASDAQ Composite (USA)	11,924.13	0.80%	1.80%	2.16%	32.89%	18,988,835
▲ Stoxx EUROPE 600 (Europe)	389.74	1.18%	2.30%	6.06%	-6.28%	8,992,442
▲ DAX (Germany)	13,138.61	0.47%	0.33%	1.78%	-0.83%	1,013,556
▲ FTSE 100 (United Kingdom)	6,421.29	1.62%	3.80%	8.48%	-14.86%	1,337,862
▲ CAC 40 (France)	5,471.48	1.70%	2.53%	10.85%	-8.47%	1,480,710
▲ IBEX 35 (Spain)	7,986.20	2.60%	7.06%	16.59%	-16.37%	440,632
▲ MSCI AC Asia Pacific Index	187.65	1.43%	2.36%	7.46%	9.96%	23,827,627
▲ HANG SENG (Hong Kong)	26,381.67	0.86%	1.40%	8.16%	-6.41%	3,715,859
▲ SHANGHAI SEC Comp. (China)	3,346.97	1.11%	-0.79%	0.32%	9.73%	6,152,173
▲ NIKKEI 225 (Japan)	25,906.93	2.05%	4.30%	11.10%	9.94%	3,718,667
▲ S&P / ASX 200 (Australia)	6,484.33	1.24%	2.95%	5.39%	-2.61%	1,496,806
▲ KOSPI (South Korea)	2,543.03	1.13%	5.87%	8.1%	15.93%	1,513,535

*Legend: Variation 1D: 1 Day; 5D: 5 Days; 1M: 1 Month; YTD: Var.% 12/31/19 to date

Equity

Germany (Stocks from DAX Index)

Largest gains	Curr.	Price	▲%	Exchange	Largest losses	Curr.	Price	▼%	Exchange
1COV GY	EUR	46.3	5.37	Xetra	VNA GY	EUR	55.36	-3.49	Xetra
CON GY	EUR	110.5	3.56	Xetra	DHER GY	EUR	98.26	-2.77	Xetra
BMW GY	EUR	72.79	2.90	Xetra	RWE GY	EUR	34.4	-1.63	Xetra
DAI GY	EUR	53.78	2.44	Xetra	DB1 GY	EUR	135.6	-0.95	Xetra

Europe (Stocks from STOXX EUROPE 600)

Largest gains	Curr.	Price	▲%	Exchange	Largest losses	Curr.	Price	▼%	Exchange
URW NA	EUR	58.66	17.56	EN Amsterdam	HFG GY	EUR	41.8	-4.57	Xetra
BBVA SQ	EUR	3,858	15.25	Soc.Bol SIBE	OCDO LN	Gbp	2,189	-4.12	Londres
CCL LN	Gbp	1212.5	12.16	Londres	KSP ID	EUR	78.5	-4.08	EN Dublin
FTI FP	EUR	6.72	11.55	EN Paris	DWNI GY	EUR	40.79	-4.00	Xetra

Global Overview:

United States:

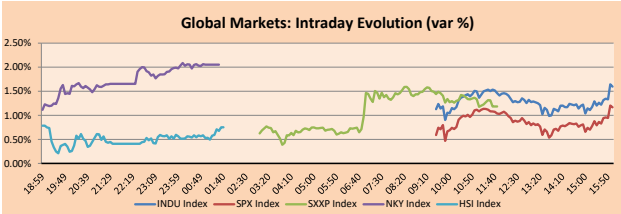
The US markets closed the day with positive returns, when optimism about the announcement of another potential vaccine against COVID-19 resurfaces in a context where outbreaks threaten once again to slow the economic recovery. The major indices closed at new highs, with the Dow being the last to return to pre-pandemic levels in February. The movements occur after the biotechnology company Moderna announced that its experimental vaccine was 94.5% effective in preventing infections. In total, the United States could have up to 60 million emergency doses available by 2020, according to Reuters. However, it should also be remembered that the situation of the pandemic in the country is increasingly serious, with cases that exceeded 11 million and record infections in 40 states, forcing states to intensify containment measures. In corporate stocks, small-cap, value, and cyclical stocks were the biggest market winners. Other stocks that enjoyed gains were travel, with American Airlines + 4.49%, United Airlines + 5.16%, Norwegian Cruise Line + 6.23% and Carnival Corp + 9.74%. Likewise, Modern + 9.6%. Thus, the S&P 500 + 1.16%, DJIA + 1.6% and NASDAQ + 0.8% finished higher.

Europe:

European markets ended today's session higher, supported by the results reported by Moderna Inc., the second pharmaceutical company to achieve an effective rate higher than expected, 94.5% in this case, and by a greater recovery of the Chinese economy. The indices that grew the most on the day were the energy sector S&P with +4.1% thanks to the increase in oil prices, while the bank index SX7P rose by +3.1%, led by the Spanish lender BBVA. Spain's largest bank closed at +15.25% and was one of the top three performing stocks in the STOXX 600 index after PNC Financial Services Group said it would buy its US business for \$ 11.6 billion in cash. Also in China, factory production data rose faster than expected in October and together with retail sales increased investor sentiment. On the other hand, the vice president of the European Central Bank asked eurozone banks to continue using their capital reserves to absorb losses without withholding credit to the real economy. For today's close, the main indices Stoxx 600 +1.18%, FTSE 100 +1.66%, CAC 40 +1.70% and DAX +0.47% culminated with higher results.

Asia:

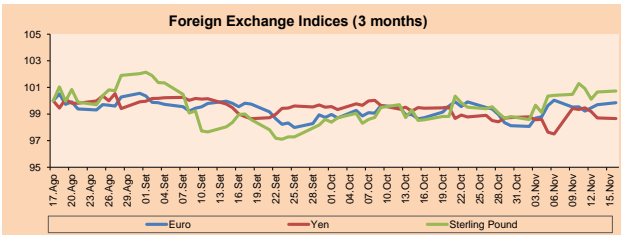
Asian markets closed today's negotiations with positive returns amid optimistic data pointing to a continued recovery in the Chinese economy and the establishment of a trade bloc that excludes the United States. On Sunday, fifteen Asia-Pacific economies formed the world's largest free trade bloc backed by China, which seeks to lower tariffs and aid in the post-pandemic economic recovery. In addition, there were positive reports on China's factory output increasing faster than expected in October and a recovery in retail sales. On the other hand, real estate investment was a key driver of broader spending, being +12.7% more than the previous year in October. Along the same line, Japanese stocks hit a 29-year high after the economy posted its first expansion in four quarters, + 21.4% in the third quarter. In Australia's case, its stock market was halted just 20 minutes after opening due to "market data issues", although its benchmark managed to hit its highest level in nine months. Thus, the Kospi Composite + 1.97%, Nikkei 225 + 2.05%, Hang Seng + 0.86%, Shanghai Composite + 1.11%, Shenzhen + 0.93% and S & P / ASX 200 + 1.24% closed higher.



Source: Bloomberg

Currency	Price	1 D*	5 D*	1 M*	YTD*
▲ Euro	1.1852	0.15%	0.33%	1.14%	5.70%
▲ Yen	104.5800	-0.05%	-0.76%	-0.78%	-3.71%
▲ Sterling Pound	1.3199	0.08%	0.25%	2.20%	-0.44%
▲ Yuan	6.5848	-0.33%	-0.67%	-1.68%	-5.43%
▲ Hong Kong Dollar	7.7532	0.00%	0.01%	0.04%	-0.49%
▲ Brazilian Real	5.4303	-0.61%	0.93%	-3.82%	34.73%
▲ Argentine Peso	79.9563	0.25%	0.77%	3.13%	33.54%

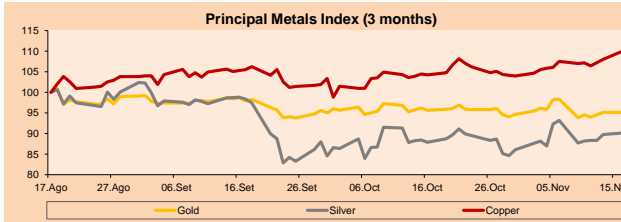
*Legend: Variation 1D: 1 Day; 5D: 5 Days; 1M: 1 Month; YTD: Var.% 12/31/19 to date



Base: 17/08/20=100
Source: Bloomberg

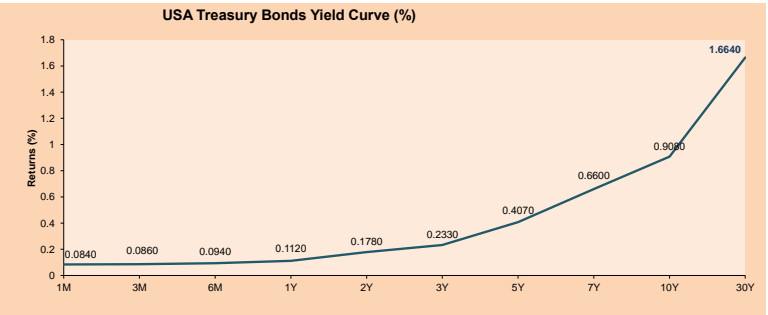
Commodities	Close	1 D*	5 D*	1 M*	YTD*
▼ Oro (US\$ Oz. T) (LME)	1,889.95	-0.01%	1.39%	-0.54%	24.50%
▲ Plata (US\$ Oz. T) (LME)	24.77	0.41%	2.76%	2.54%	38.75%
▲ Cobre (US\$ TM) (LME)	7,062.75	1.82%	2.75%	5.49%	15.35%
▲ Zinc (US\$ TM) (LME)	2,665.00	1.91%	1.41%	10.15%	16.91%
▲ Petróleo WTI (US\$ Barril) (NYM)	41.34	3.02%	2.61%	0.54%	-26.75%
▲ Estano (US\$ TM) (LME)	18,772.00	1.89%	2.69%	2.58%	9.28%
▲ Plomo (US\$ TM) (LME)	1,889.75	0.79%	4.19%	9.06%	-1.24%
▲ Açuçar #11 (US\$ Libra) (NYB-ICE)	15.47	3.41%	3.97%	7.21%	7.58%
▲ Cacao (US\$ TM) (NYB-ICE)	2,435.00	2.96%	1.84%	3.22%	0.12%
▲ Café Arabica (US\$ TM) (NYB-ICE)	118.75	5.84%	8.40%	7.95%	-15.21%

*Legend: Variación 1D: 1 Día; 5D: 5 Días; 1M: 1 Mes; YTD: Var.% 31/12/19 a la fecha



Base: 17/08/20=100
Source: Bloomberg

ETFs	Curr.	Close	1D	5D	30 D	YTD	Exchange
SPDR S&P 500 ETF TRUST	USD	382.57	1.25%	2.28%	4.40%	12.65%	NYSE Arca
ISHARES MSCI EMERGING MARKET	USD	48.93	1.24%	1.39%	7.40%	9.05%	NYSE Arca
ISHARES IBOXX HIGH YLD CORP	USD	85.92	0.56%	0.05%	1.52%	-2.30%	NYSE Arca
FINANCIAL SELECT SECTOR SPDR	USD	27.63	2.22%	2.30%	10.56%	-10.23%	NYSE Arca
VANECK GOLD MINERS	USD	37.76	-0.68%	-2.88%	-5.20%	28.96%	NYSE Arca
ISHARES RUSSELL 2000 ETF	USD	177.63	2.38%	4.77%	9.41%	7.22%	NYSE Arca
SPDR GOLD SHARES	USD	177.15	-0.01%	1.18%	-0.64%	23.97%	NYSE Arca
ISHARES 20+ YEAR TREASURY BO	USD	157.78	-0.24%	1.10%	-2.24%	16.46%	NASDAQ GM
INVESCO QQQ TRUST SERIES 1	USD	293.20	0.78%	1.60%	1.63%	37.91%	NASDAQ GM
ISHARES NASDAQ BIOTECHNOLOGY	USD	141.08	0.01%	2.51%	0.98%	17.07%	NASDAQ GM
ENERGY SELECT SECTOR SPDR	USD	36.11	6.58%	8.23%	19.61%	-39.86%	NYSE Arca
PROSHARES ULTRA VIX ST FUTUR	USD	12.60	-3.45%	-11.14%	-24.98%	-2.25%	NYSE Arca
UNITED STATES OIL FUND LP	USD	28.81	2.42%	2.64%	0.31%	-71.89%	NYSE Arca
ISHARES MSCI BRAZIL ETF	USD	32.10	2.49%	2.16%	12.00%	-32.35%	NYSE Arca
SPDR S&P OIL & GAS EXP & PR	USD	51.62	5.65%	9.46%	18.50%	-45.55%	NYSE Arca
UTILITIES SELECT SECTOR SPDR	USD	66.76	1.01%	2.20%	4.31%	3.31%	NYSE Arca
ISHARES US REAL ESTATE ETF	USD	86.64	0.81%	4.01%	6.10%	-6.92%	NYSE Arca
SPDR S&P BIOTECH ETF	USD	125.84	0.48%	4.38%	4.16%	32.10%	NYSE Arca
ISHARES IBOXX INVESTMENT GRA	USD	138.20	0.35%	0.77%	0.64%	6.44%	NYSE Arca
ISHARES JP MORGAN USD EMERGI	USD	114.08	0.22%	0.69%	1.74%	-0.42%	NASDAQ GM
REAL ESTATE SELECT SECT SPDR	USD	37.75	0.64%	3.23%	4.54%	-2.38%	NYSE Arca
ISHARES CHINA LARGE-CAP ETF	USD	47.68	0.44%	-1.14%	8.09%	9.28%	NYSE Arca
CONSUMER STAPLES SPDR	USD	68.15	0.92%	4.94%	2.99%	8.21%	NYSE Arca
VANECK JR GOLD MINERS	USD	54.21	-0.68%	-3.21%	-6.00%	28.28%	NYSE Arca
SPDR BBG BARC HIGH YIELD BND	USD	107.03	0.55%	0.13%	1.82%	-2.29%	NYSE Arca
VANGUARD REAL ESTATE ETF	USD	86.34	1.12%	4.36%	6.83%	-6.95%	NYSE Arca
GRAYSCALE BITCOIN TRUST BTC	USD	18.86	5.01%	10.36%	51.73%	130.28%	OTC US



Source: Bloomberg

Capital Market Laboratory Coordinator: Economist Bruno Bellido
Collaboration: Piero Best, Luis Davila, Laura Delgado and Alonso Hernandez
email: pulso@pulsobursatil.com, pulso@ulima.edu.pe
facebook: www.facebook.com/pulsobursatil.ulima

LIMA

Stocks

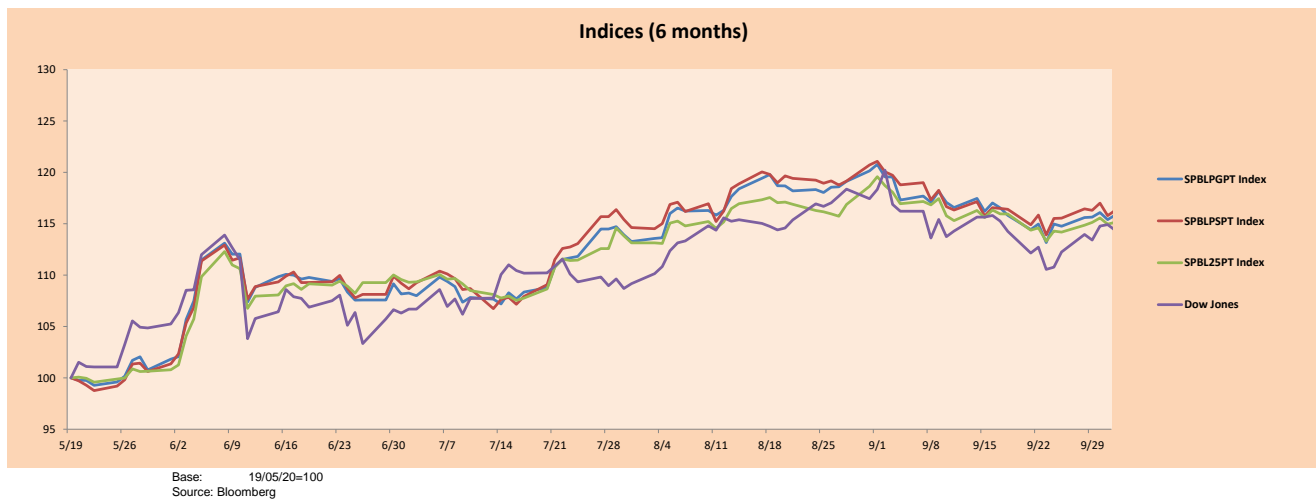
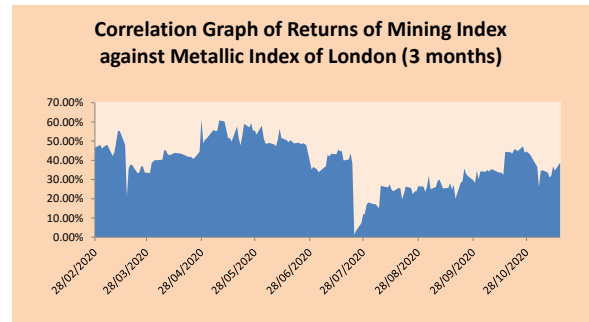
Ticker	Currency	Price	1D*	5D*	30D*	YTD*	Frequency	Volume (US\$)	Beta	Dividend Yield (%)	Price Earning	Market Cap. (M US\$)	Economic Sector*	Index Weight
▲ ALICORC1 PE**	S/.	7.00	0.09%	1.44%	3.55%	-7.07%	95.00%	1,668,611	0.75	3.57	16.10	1,629.89	Industrial	3.53%
▲ ATACOCB1 PE**	S/.	0.12	0.00%	0.00%	-3.13%	-24.85%	40.00%	2,030	1.04	0.00	-	31.96	Mining	1.02%
- BACKJUS1 PE**	S/.	19.00	0.00%	-4.95%	11.76%	-33.33%	95.00%	10,515	0.51	3.44	5.60	8,050.30	Industrial	0.82%
▲ BAP PE**	US\$	127.25	1.80%	-7.15%	5.56%	-40.17%	100.00%	3,440,378	1.53	6.92	-	12,010.15	Diverse	5.82%
▼ BVN PE**	US\$	11.28	-0.62%	-12.08%	-8.37%	-26.27%	100.00%	205,552	1.48	0.23	-	3,109.16	Mining	5.88%
▲ CASAGRC1 PE**	S/.	4.90	2.08%	6.52%	16.67%	61.72%	90.00%	75,523	0.53	2.19	8.80	112.60	Agricultural	1.31%
- BBVAC1 PE**	S/.	2.15	0.00%	-10.42%	0.66%	-30.47%	95.00%	247,753	0.71	4.01	11.19	3,829.48	Finance	2.85%
- CORARE1 PE**	S/.	0.85	3.66%	6.25%	14.86%	-6.59%	90.00%	75,411	0.70	8.56	6.04	316.38	Industrial	1.72%
- CPACASC1 PE**	S/.	5.55	0.00%	-0.89%	0.91%	-9.76%	95.00%	287,947	0.60	6.49	17.90	648.17	Industrial	2.38%
▲ CVERDEC1 PE**	US\$	18.90	0.59%	-2.48%	3.85%	-2.07%	100.00%	296,088	0.75	0.00	45.62	6,616.06	Mining	5.25%
- ENGEPEC1 PE**	S/.	2.00	0.00%	0.00%	0.00%	-13.04%	50.00%	557,680	0.49	8.56	10.05	1,548.82	Public Services	1.44%
- ENDISPC1**	S/.	5.09	0.00%	-2.12%	1.80%	-30.75%	60.00%	157,095	0.46	0.40	9.60	886.68	Public Services	0.98%
▲ FERREYC1 PE**	S/.	1.70	1.19%	-2.86%	3.03%	-22.37%	100.00%	413,768	0.72	4.51	34.13	452.48	Diverse	4.90%
▼ AENZAC1 PE**	S/.	1.52	-2.56%	-4.40%	1.33%	-10.59%	85.00%	288,629	0.74	0.00	-	361.54	Diverse	4.05%
▲ IFS PE**	US\$	23.00	4.31%	0.61%	-2.75%	-43.77%	100.00%	260,144	1.24	7.61	22.32	2,655.30	Diverse	7.22%
- INRETC1 PE**	US\$	34.20	1.18%	-0.87%	10.32%	-5.00%	95.00%	6,485,821	0.62	1.65	28.09	3,516.01	Diverse	5.28%
- LUSURC1 PE**	S/.	25.99	0.00%	-1.92%	-5.15%	0.93%	80.00%	407,706	0.51	2.50	22.04	3,452.51	Public Services	1.81%
- MINSUR1 PE**	S/.	1.65	0.00%	-2.94%	-1.20%	5.77%	60.00%	1,317	0.73	0.00	-	1,297.69	Mining	3.09%
▲ PML PE**	US\$	0.09	7.32%	7.32%	-2.22%	57.14%	60.00%	14,741	1.26	0.00	-	23.24	Mining	2.12%
▲ RELAPAC1 PE**	S/.	0.07	1.52%	4.69%	1.52%	-45.53%	55.00%	27,481	0.72	0.00	-	152.05	Industrial	2.12%
▲ SCCO PE**	US\$	55.30	2.48%	0.75%	14.42%	30.33%	95.00%	143,274	0.82	2.71	32.21	42,750.95	Mining	2.14%
▼ SIDERC1 PE**	S/.	0.75	-2.60%	-2.60%	11.94%	-15.73%	100.00%	52,566	0.87	45.63	8.91	251.23	Industrial	1.43%
▲ TV PE**	US\$	0.12	0.83%	-1.63%	16.35%	-30.06%	85.00%	114,429	1.47	0.00	-	97.11	Mining	2.93%
- UNACEMC1 PE**	S/.	1.35	0.00%	-4.93%	-3.57%	-32.50%	95.00%	218,768	0.84	1.93	65.69	669.58	Industrial	3.00%
▼ VOLCABC1 PE**	S/.	0.37	-2.12%	-3.90%	-3.90%	-16.85%	100.00%	389,455	0.84	0.00	-	1,717.06	Mining	5.90%
- NEXAPEC1 PE**	S/.	2.60	0.00%	1.17%	0.00%	-24.64%	50.00%	35,464	0.99	0.00	-	937.87	Mining	1.56%

Quantity of shares: 26
Source: Bloomberg, Economática
* Bloomberg Industry Classification System
** PER is used in the stock market and original currency of the instrument
*Legend: Variation 1D: 1 Day; 5D: 5 Days; 1M: 1 Month; YTD: Var.% 12/31/18 to date

Sectorial Indices

	Close	1D*	5D*	30D*	YTD*	Beta
▲ Mining Index	342.65	1.77%	-1.86%	7.33%	12.47%	1.02
▲ Consumer Index	1,013.34	0.76%	-1.19%	3.99%	-11.13%	0.41
▲ Industrial Index	176.40	-0.04%	-1.31%	3.13%	-16.45%	0.57
▲ Banking and Financial Index	832.24	2.55%	-4.52%	6.83%	-29.45%	1.58
▲ Construction Index	189.35	-0.56%	-2.55%	1.29%	-16.45%	0.54
- Services Index	607.04	0.00%	-1.22%	-2.61%	-6.83%	0.08
- Electric Index	592.62	0.00%	-1.22%	-2.61%	-6.83%	0.08

*Legend: Variation 1D: 1 Day; 5D: 5 Days; 1M: 1 Month; YTD: Var.% 12/31/19 to date



Capital Market Laboratory Coordinator: Economist Bruno Bellido
Collaboration: Piero Best, Luis Davila, Laura Delgado and Alonso Hernández
email: pulsohorsatil@ulima.edu.pe
facebook: www.facebook.com/pulsohorsatil.ul

The content of this document is just for informational purposes. The information and opinions expressed should not be consider as recommendations for future decisions. Under any circumstances, the Capital Market Laboratory of University of Lima will be responsible for the use of the statements in this document.

SOVEREIGN RATING

RISK RATINGS

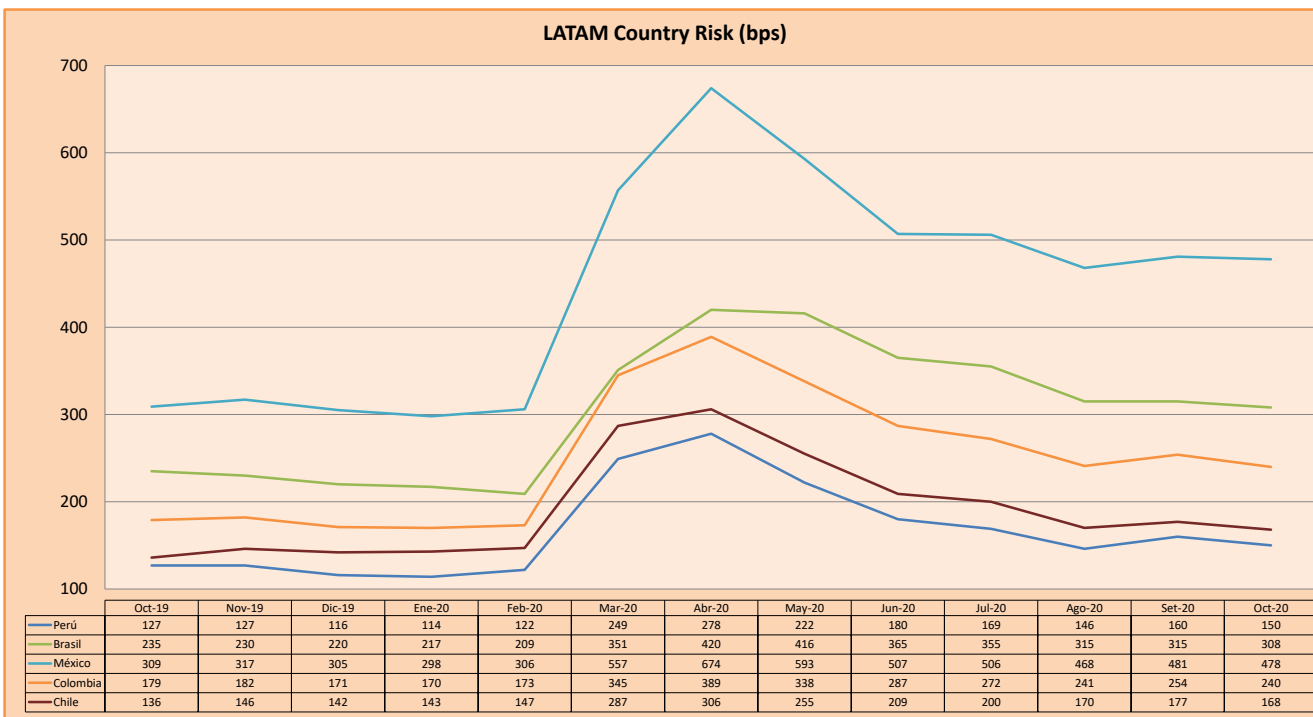
Moody's	S&P	Fitch	
Aaa	AAA	AAA	Prime
Aa1	AA+	AA+	High credit quality
Aa2	AA	AA	
Aa3	AA-	AA-	
A1	A+	A+	Medium-high grade, with low credit risk
A2	A	A	
A3	A-	A-	
Baa1	BBB+	BBB+	Moderate Credit Risk
Baa2	BBB	BBB	
Baa3	BBB-	BBB-	
Ba1	BB+	BB+	It has speculative elements and it is subject to substantial credit risk
Ba2	BB	BB	
Ba3	BB-	BB-	
B1	B+	B+	It is considered speculative and it has high credit risk
B2	B	B	
B3	B-	B-	
Caa1	CCC+		Bad credit conditions and it is subject to high credit risk
Caa2	CCC		
Caa3	CCC-	CCC	
Ca	C		Very close to default or in default
		DDD	
C	D	DD D	

Source: Bloomberg

Latin America Credit Rating			
Clasificadora de riesgo			
Country	Moody's	Fitch	S&P
Peru	A3	BBB+	BBB+
México	Ba2	BB-	BB-
Venezuela	C	WD	SD
Brazil	Ba2	BB-	BB-
Colombia	Baa2	BBB-	BBB-
Chile	A1	A-	A+
Argentine	Ca	WD	CCC+
Panama	Baa1	BBB	BBB+

Source: Bloomberg

LATAM Country Risk (bps)



Source: BCRP

Capital Market Laboratory Coordinator: Economist Bruno Bellido
Collaboration: Piero Best, Luis Davila, Laura Delgado and Alonso Hernández
email: pulsobursatil@ulima.edu.pe
facebook: www.facebook.com/pulsobursatil.ul