

PULSO BURSÁTIL

FACULTAD DE CIENCIAS EMPRESARIALES Y ECONÓMICAS
CARRERA DE ECONOMÍA
LABORATORIO DE MERCADO DE CAPITALES

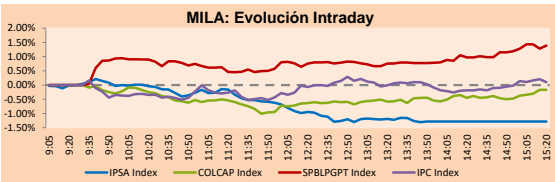


MILA

Lima, november 30, 2020

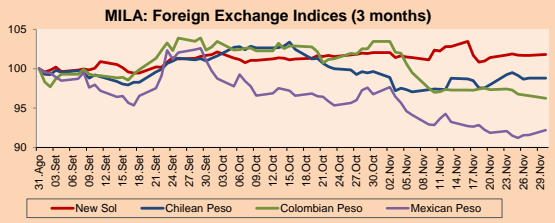
Main Indexes	Close	1 D	5 D	1 M	YTD	Cap. Burs. (US\$ bill)
▼ IPSA (Chile)	4,032.87	-2.04%	-2.38%	15.60%	-12.37%	102.54
▼ IGPA (Chile)	20,229.05	-1.77%	-1.86%	14.35%	-12.41%	126.69
▼ COLSC (Colombia)	965.85	-0.13%	1.49%	10.07%	-1.25%	5.30
▼ COLCAP (Colombia)	1,258.00	-0.30%	0.81%	10.67%	-24.33%	74.55
▲ S&P/BVL (Perú)*	19,796.51	1.00%	4.61%	13.30%	-3.55%	100.65
▲ S&P/BVL SEL (Perú)	521.78	-0.33%	3.22%	11.93%	-1.81%	81.79
▲ S&P/BVL LIMA 25	24,111.97	0.53%	2.44%	11.45%	-6.37%	99.80
▲ IPC (México)	41,778.88	-0.41%	1.36%	12.95%	-4.05%	264.28
▼ S&P MILA 40	475.50	-0.45%	4.93%	16.33%	-21.15%	216.37

*Legend: Variation 1D: 1 day; 5D: 5 days; 1M: 1 Month; YTD: Var% 12/31/19 to date

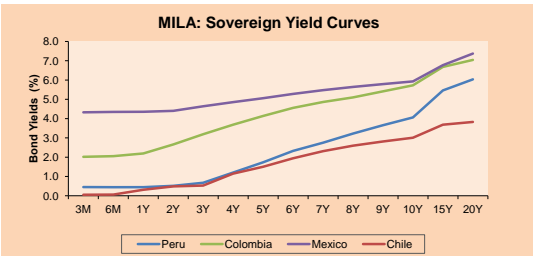


Currency	Price	1D*	5D*	30 D*	YTD*
▲ New Sol (PEN)	3,607.00	0.11%	0.06%	-0.23%	8.90%
▼ Chilean Peso (CLP)	767.35	-0.01%	-0.45%	-0.84%	2.08%
▼ Colombian Peso (COP)	3,600.75	-0.34%	-1.21%	-6.98%	9.87%
▲ Mexican Peso (MXN)	20.18	0.68%	0.13%	-4.71%	6.63%

*Legend: Variation 1D: 1 day; 5D: 5 days; 1M: 1 Month; YTD: Var% 12/31/19 to date



Fixed Income	Currency	Price	Bid Yield (%)	Ask Yield (%)	Duration
PERU 7.35 07/21/25	USD	127.66	1.25	1.15	3.99
PERU 4.125 08/25/27	USD	116.472	1.57	1.50	5.95
PERU 8.75 11/21/33	USD	167.19	2.65	2.57	9.15
PERU 6.55 03/14/37	USD	149.297	2.80	2.74	10.84
PERU 5.625 11/18/2050	USD	153.348	2.95	2.92	17.72
CHILE 2.25 10/30/22	USD	103.318	0.61	0.40	1.87
CHILE 3.125 01/21/26	USD	110.513	1.06	0.98	4.75
CHILE 3.625 10/30/42	USD	115.884	2.69	2.64	15.95
COLOM 11.85 03/09/28	USD	165.473	2.20	1.99	5.47
COLOM 10.375 01/28/33	USD	158.769	4.28	4.05	7.86
COLOM 7.375 09/18/37	USD	144.045	3.84	3.77	10.91
COLOM 6.125 01/18/41	USD	132.22	3.85	3.79	12.71
MEX 4 10/02/23	USD	132.22	3.845	3.788	12.71
MEX5.55 01/45	USD	127.807	3.81	3.76	14.56



Equity

Largest gains	Exchange	Currency	Price	▲ %
ALFA SAB-A	Mexico	MXN	15.91	4.46
CONCHATORO	Chile	CLP	1314.00	3.62
COCA-COLA FEMSA	Mexico	MXN	91.06	3.20
CREDECORP LTD	Peru	USD	154.25	2.83
GRUPO MEXICO-B	Mexico	MXN	73.34	2.83

Per Turnover	Exchange	Amount (US\$)
WALMART DE MEXIC	Mexico	192,777,186
GRUPO F BANORT-O	Mexico	138,335,225
AMERICA MOVIL-L	Mexico	113,087,535
FOMENTO ECON-UBD	Mexico	107,344,664
CEMEX SAB-CPO	Mexico	106,133,495

Largest losses	Exchange	Currency	Price	▼ %
CMPC	Chile	CLP	1650.1	-4.89
FALABELLA SA	Chile	CLP	2611	-4.71
ENEL CHILE SA	Chile	CLP	53.07	-4.38
ECOPETROL	Colombia	COP	2081	-4.19
ENEL AMERICAS SA	Chile	CLP	110.6	-4.08

Per Volume	Exchange	Volume
ITAU CORPBANCA	Chile	1,284,354,921
BANCO DE CHILE	Chile	834,219,488
BANCO SANTANDER	Chile	435,259,989
AGUAS ANDINAS-A	Chile	315,893,754
ENEL AMERICAS SA	Chile	291,865,859

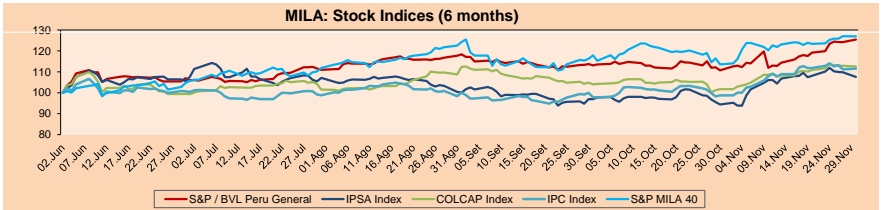
MILA

Peru: The General Index of the BVL ended today's session with a positive result of +1.00%. The index maintains an annual accumulated negative trend of -3.55% in local currency, while the adjusted return in dollars amounts to -1.43%. Then, the S&P / BVL Peru SEL varied by -0.33% while the S&P / BVL LIMA 25 by +0.53%. The PEN spot reached 5 / 3.6070. Headline: Peru's country risk fell three basis points and closed at 1.33 percentage points.

Chile: The IPSA index ended the day with a negative return of -2.04%. The sectors most affected in the day were Energy (-4.04%) and Non-basic consumer products (-4.26%). The shares with the worst performance were Empresas CMPC SA (-4.89%) and SACI Falabella (-4.71%). Owner: The Centinela mine union of Chile's Antofagasta rejects a contract offer and leads a strike.

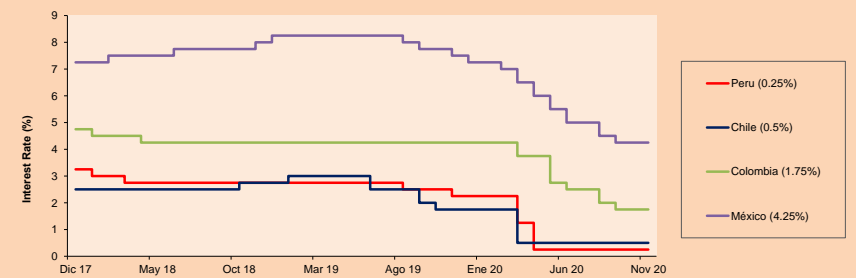
Colombia: The COLCAP Index had a negative result of -0.30%. The sectors with the best returns on the day were Energy (-3.71%) and Materials (-1.14%). The stocks with the worst results were Ecopetrol SA (-4.19%) and Grupo de Inversiones Suramerica (-2.55%). Headline: Unemployment in Colombia ceases in October amid "decoupling" of the labor market.

Mexico: The MEXBOL index closed the session with a positive result of +0.25%. The sectors with the best returns of the day were Consumer Services (+2.00%) and Materials (+1.11%). The best performing stocks were Alfa SAB de CV (+4.46%) and Coca-Cola Femsa SAB de CV (+3.20%). Headline: Foreign investment in the Mexican automotive industry registers the biggest drop in 20 years at the start of the T-MEC.



ETFs	Curr.	Close	1D	5D	30 D	YTD	Exchange
▼ iShares MSCI All Peru Caped Index Fund	USD	33.4	-0.45%	4.18%	14.01%	-9.85%	NYSE Arca
▼ iShares MSCI All Chile Caped Index Fund	USD	26.89	-3.34%	-2.57%	12.51%	-19.32%	Cboe BZX
▼ Global X MSCI Colombia	USD	9.47	-2.09%	-0.11%	16.34%	-31.87%	NYSE Arca
▼ iShares MSCI Mexico Capped	USD	40.57	-2.00%	-1.19%	18.76%	-9.90%	NYSE Arca
▼ iShares MSCI Emerging Markets	USD	48.73	-2.62%	-0.94%	8.99%	8.60%	NYSE Arca
▼ Vanguard FTSE Emerging Markets	USD	47.56	-2.46%	-0.69%	8.56%	6.95%	NYSE Arca
▼ iShares Core MSCI Emerging Markets	USD	58.62	-2.46%	-0.63%	9.63%	9.04%	NYSE Arca
▼ iShares JP Morgan Emerging Markets Bonds	USD	59.1	-1.60%	-1.05%	7.53%	0.75%	Cboe BZX
▲ Morgan Stanley Emerging Markets Domestic	USD	6.15	0.99%	1.15%	10.02%	-12.02%	New York

MILA: Policy Rate



Capital Market Laboratory Coordinator: Economist Bruno Bellido
Collaboration: Piero Best, Luis Davila, Laura Delgado and Alonso Hernández
email: pulsobursatil@ulima.edu.pe
facebook: www.facebook.com/pulsobursatil.ul

WORLD

Main Indices	Close	1 D*	5 D*	1 M*	YTD*	Market Cap. (US\$ Mill.)
▼ Dow Jones (USA)	29,638.64	-0.91%	1.28%	11.84%	3.66%	9,154,552
▼ Standard & Poor's 500 (EEUU)	3,621.63	-0.46%	1.80%	10.75%	12.10%	31,345,061
▼ NASDAQ Composite (USA)	12,198.74	-0.06%	2.90%	11.80%	35.96%	19,730,658
▼ Stoxx EUROPE 600 (Europe)	389.36	-0.98%	0.13%	14.56%	-5.68%	8,942,806
▼ DAX (Germany)	13,291.16	-0.33%	1.25%	16.09%	1.26%	1,017,143
▼ FTSE 100 (United Kingdom)	6,266.19	-1.59%	-1.07%	14.31%	-15.47%	1,344,932
▼ CAC 40 (France)	5,518.55	-1.42%	0.48%	21.31%	-6.77%	1,479,998
▼ IBEX 35 (Spain)	8,076.90	-1.39%	1.20%	26.11%	-14.79%	442,360
▼ MSCI AC Asia Pacific Index	189.22	-2.01%	-0.13%	10.18%	10.87%	23,854,467
▼ HANG SENG (Hong Kong)	26,341.49	-2.06%	-0.55%	10.21%	-5.75%	3,716,908
▼ SHANGHAI SEC Comp. (China)	3,391.76	-0.49%	-0.67%	7.05%	13.71%	6,378,591
▼ NIKKEI 225 (Japan)	26,433.62	-0.79%	3.55%	16.58%	13.23%	3,762,104
▼ S&P / ASX 200 (Australia)	6,517.81	-1.26%	-0.67%	11.15%	-1.43%	1,530,433
▲ KOSPI (South Korea)	2,591.34	0.25%	-1.16%	16.19%	19.87%	1,570,665

*Legend: Variation 1D: 1 Day; 5D: 5 Days; 1M: 1 Month; YTD: Var.% 12/31/19 to date

Equity

Germany (Stocks from DAX Index)					
Largest gains	Curr.	Price	▲%	Exchange	
DHER GY	EUR	101.25	2.27	Xetra	
DB1 GY	EUR	139.75	1.97	Xetra	
SAP GY	EUR	101.98	1.84	Xetra	
VNA GY	EUR	57.48	1.63	Xetra	
Largest losses					
VOW5 GY	EUR	141.34	-3.14	Xetra	
BAYN GY	EUR	48.27	-2.50	Xetra	
CON GY	EUR	114.2	-2.35	Xetra	
HEI GY	EUR	59.54	-1.59	Xetra	

Europe (Stocks from STOXX EUROPE 600)					
Largest gains	Curr.	Price	▲%	Exchange	
DEMANT DC	DKK	235	7.45	Copenhagen	
CDR PW	PLN	399.5	7.39	Warsaw	
EVO SS	SEK	733.2	6.23	Stockholm	
JD/LN	GBP	776.2	5.66	Londres	
Largest losses					
PHNX LN	GBP	716.8	-8.83	Londres	
KGX GY	EUR	64.44	-8.07	Xetra	
ROCKG DC	DKK	2280	-6.79	Copenhagen	
CPG LN	GBP	1324	-6.63	Londres	

Global Overview:

United States:

The US markets closed today's session with negative results, reflecting pessimism by reports from the real estate sector that did not meet investors' expectations. The negative feeling would be a reaction to a report from the National Association of Realtors showing that pending home sales in the US unexpectedly declined in October by -1.1%. Markets were also weighed by the announcement of the Trump administration which is planning to add China's top chipmaker SMIC and national offshore oil and gas producer CNOOC to a blacklist of alleged Chinese military companies. Investors, meanwhile, largely ignored the latest upbeat news about Moderna (MRNA) announcing a 94.1% efficacy result on phase 3 of its covid-19 vaccine candidate. Additionally, the biotech company said it plans to apply for an emergency use authorization from the FDA and a conditional approval from the European Medicines Agency today. In a sectoral analysis, the greatest weakness was in energy stocks; thus, the Philadelphia oil services index fell -6.4% and the NYSE Arca Oil fell -6.3%. In this way, the DJIA -0.91%, S&P 500 -0.46% and Nasdaq -0.06% closed lower.

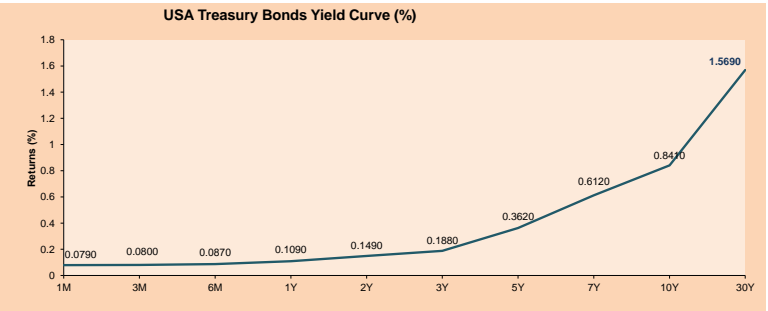
Europe:

European markets closed today's session with negative returns driven by tensions in the Brexit trade agreement negotiations, being one month away from the conclusion of the United Kingdom's departure from the European Union, which is why it seeks to establish a consensus in which a free trade valued at 1 trillion dollars is agreed. Likewise, the S&P energy sector fell by -3.4%, of which the oil companies Total SA, British Petroleum and Royal Dutch Shell fell by -5% as crude prices fell due to the uncertainty about whether OPEC + would agree to extend its production cuts in talks this week. In addition, the United Kingdom could approve the COVID-19 vaccine from the pharmaceutical company Pfizer in days and give the first immunizations from December 7. At the end of the month, the Stoxx 600 had a cumulative result of +14%, which turns out to be the best monthly gain since December 1986. In corporate stocks, the Dutch bank ABN Amro had a return of -8.93% when announcing a cut close to 3,000 jobs by 2024. By the close of today, the main indexes Stoxx 600 -0.98%, FTSE 100 -1.59%, CAC 40 -1.42% and DAX -0.33% culminated with lower results.

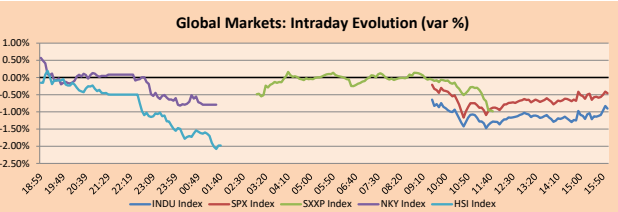
Asia:

Asian markets closed today's session in negative territory, influenced by concerns about tensions between China and the US. The Japanese market closed lower with the Nikkei -0.79%; however, it experienced an increase of +15% in November, its highest monthly gain since January 1994. Likewise, the increasing number of national cases of coronavirus, promoted losses in the aviation sector -3.59% and ground transportation -2.29%. In addition, the president of the Tokyo Stock Exchange resigned in order to assume responsibility for the technical issues that affected operators on October 1st. Similarly, Australian stocks extended their losses for the third consecutive session, given the deepening of tensions with their largest trading partner, China, due to the imposition of anti-dumping tariffs on their wine imports. On the other hand, China's shares also fell when it emerged that the Trump administration plans to add the main chipmaker, SMIC, and the national offshore oil and gas producer, CNOOC, to a blacklist of alleged Chinese military companies. Still, stocks were up +5% in November as the economic recovery accelerates. Thus, Nikkei 225 -0.79%, Hang Seng -2.06%, ASX 200 -1.26% and Shanghai -0.49% closed lower.

ETFs	Curr.	Close	1D	5D	30 D	YTD	Exchange
SPDR S&P 500 ETF TRUST	USD	382.06	-0.44%	1.29%	10.88%	12.40%	NYSE Arca
ISHARES MSCI EMERGING MARKET	USD	48.73	-2.62%	-0.94%	8.99%	8.60%	NYSE Arca
ISHARES IBOXX HIGH YLD CORP	USD	86.32	-0.10%	0.31%	2.91%	-1.84%	NYSE Arca
FINANCIAL SELECT SECTOR SPDR	USD	27.88	-2.07%	0.69%	16.85%	-9.42%	NYSE Arca
VANECK GOLD MINERS	USD	34.88	1.31%	0.93%	-7.50%	18.44%	NYSE Arca
ISHARES RUSSELL 2000 ETF	USD	181.02	-1.82%	0.11%	19.24%	9.27%	NYSE Arca
SPDR GOLD SHARES	USD	166.67	-0.67%	-3.23%	-5.41%	16.63%	NYSE Arca
ISHARES 20+ YEAR TREASURY BO	USD	160.02	-0.12%	-0.47%	1.55%	18.11%	NASDAQ GM
INVESTCO QQQ TRUST SERIES 1	USD	299.62	0.20%	3.18%	11.23%	40.92%	NASDAQ GM
ISHARES NASDAQ BIOTECHNOLOGY	USD	144.98	1.23%	4.24%	10.99%	20.31%	NASDAQ GM
ENERGY SELECT SECTOR SPDR	USD	36.76	-5.53%	-4.12%	27.99%	-38.77%	NYSE Arca
PROSHARES ULTRA VIX ST FUTUR	USD	11.15	2.53%	0.54%	-49.33%	-13.50%	NYSE Arca
UNITED STATES OIL FUND LP	USD	30.97	-0.80%	4.91%	22.65%	-69.78%	NYSE Arca
ISHARES MSCI BRAZIL ETF	USD	33.25	-2.29%	2.78%	23.79%	-29.93%	NYSE Arca
SPDR S&P OIL & GAS EXP & PR	USD	54.06	-6.60%	-4.66%	33.22%	-42.97%	NYSE Arca
UTILITIES SELECT SECTOR SPDR	USD	62.84	-1.44%	-1.12%	0.74%	-2.75%	NYSE Arca
ISHARES US REAL ESTATE ETF	USD	84.16	-0.87%	-0.81%	8.58%	-9.58%	NYSE Arca
SPDR S&P BIOTECH ETF	USD	133.20	1.32%	5.30%	18.12%	40.05%	NYSE Arca
ISHARES IBOXX INVESTMENT GRA	USD	138.48	0.35%	0.54%	3.55%	8.22%	NYSE Arca
ISHARES JPMORGAN USD EMERGI	USD	114.25	-0.19%	0.19%	3.84%	-0.27%	NASDAQ GM
REAL ESTATE SELECT SECT SPDR	USD	36.50	-0.87%	-0.87%	6.88%	-5.61%	NYSE Arca
ISHARES CHINA LARGE-CAP ETF	USD	47.00	-3.33%	-0.53%	6.58%	7.72%	NYSE Arca
CONSUMER STAPLES SPDR	USD	66.91	-0.01%	0.59%	7.47%	6.24%	NYSE Arca
VANECK JR GOLD MINERS	USD	50.03	0.85%	0.95%	-5.98%	18.39%	NYSE Arca
SPDR BBG BARC HIGH YIELD BND	USD	107.53	-0.12%	0.25%	3.10%	-1.83%	NYSE Arca
VANGUARD REAL ESTATE ETF	USD	84.00	-1.05%	-0.91%	9.67%	-9.47%	NYSE Arca
GRAYSCALE BITCOIN TRUST BTC	USD	23.19	23.14%	4.81%	50.80%	183.19%	OTC US



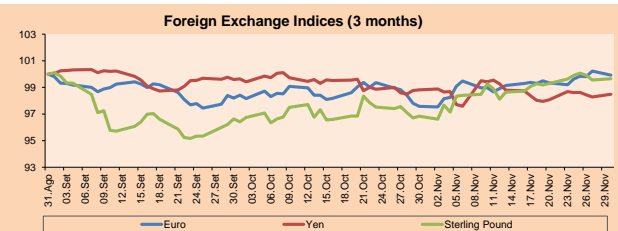
Source: Bloomberg



Source: Bloomberg

Currency	Price	1 D*	5 D*	1 M*	YTD*
▼ Euro	1.1927	-0.30%	0.73%	2.40%	6.37%
▲ Yen	104.3100	0.21%	-0.20%	-0.33%	-3.96%
▲ Sterling Pound	1.3323	0.09%	0.02%	2.90%	0.50%
▲ Yuan	6.5789	0.01%	-0.11%	-1.68%	-5.52%
▲ Hong Kong Dollar	7.7514	0.01%	-0.01%	-0.01%	-0.51%
▲ Brazilian Real	5.3594	0.41%	-1.37%	-6.71%	32.97%
▲ Argentine Peso	81.3054	0.30%	1.18%	3.81%	35.80%

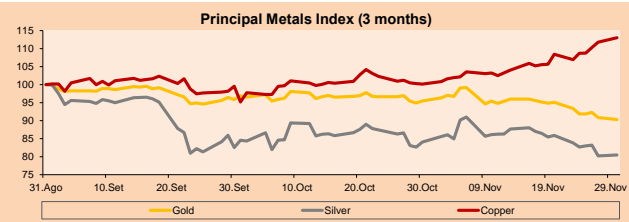
*Legend: Variation 1D: 1 Day; 5D: 5 Days; 1M: 1 Month; YTD: Var.% 12/31/19 to date



Base: 31/08/20=100
Source: Bloomberg

Commodities	Close	1 D*	5 D*	1 M*	YTD*
▼ Oro (US\$ Oz. T) (LME)	1,776.95	-0.61%	-3.31%	-5.42%	17.11%
▲ Plata (US\$ Oz. T) (LME)	22.64	0.31%	-4.03%	-4.28%	26.84%
▲ Cacao (US\$ TM) (LME)	7,569.25	1.09%	5.69%	12.85%	23.10%
▲ Zinc (US\$ TM) (LME)	2,776.20	0.01%	2.22%	10.44%	21.79%
▼ Petróleo WTI (US\$ Barril) (NYM)	45.34	-0.42%	5.29%	25.42%	-19.08%
▼ Estarío (US\$ TM) (LME)	18,642.00	-1.50%	-0.07%	5.18%	8.52%
▼ Plomo (US\$ TM) (LME)	2,061.50	-1.34%	3.31%	14.12%	7.73%
▼ Aluminio #11 (US\$ Libra) (NYB-ICE)	14.51	-2.09%	-4.22%	1.04%	0.90%
▼ Cacaó (US\$ TM) (NYB-ICE)	2,739.00	-0.98%	-0.51%	18.83%	12.62%
▼ Café Arabica (US\$ TM) (NYB-ICE)	123.30	-0.72%	5.34%	15.40%	-11.96%

*Legend: Variación 1D: 1 Día; 5D: 5 Días; 1M: 1 Mes; YTD: Var.% 31/12/19 a la fecha



Base: 31/08/20=100
Source: Bloomberg

LIMA

Stocks

Ticker	Currency	Price	1D*	5D*	30D*	YTD*	Frequency	Volume (US\$)	Beta	Dividend Yield (%)	Price Earning	Market Cap. (M US\$)	Economic Sector*	Index Weight
- ALICORC1 PE**	S/.	7.10	0.00%	0.42%	10.07%	-1.25%	100.00%	809,285	0.76	3.52	16.33	1,682.15	Industrial	3.53%
- ATACOCB1 PE**	S/.	0.15	0.00%	-0.68%	16.00%	-12.12%	45.00%	469	1.10	0.00	-	37.98	Mining	1.02%
- BACKJUS1 PE**	S/.	19.50	0.00%	-0.51%	2.63%	-31.58%	90.00%	19,138	0.52	3.35	8.82	8,259.13	Industrial	0.82%
▲ BAP PE**	US\$	154.25	2.83%	13.42%	35.19%	-27.47%	100.00%	3,948,249	1.56	5.71	-	14,558.47	Diverse	5.82%
▲ BVN PE**	US\$	10.97	0.73%	-2.49%	-8.58%	-28.30%	95.00%	2,810,552	1.34	0.24	-	3,023.71	Mining	5.88%
▲ CASAGRC1 PE**	S/.	5.51	9.11%	7.62%	10.20%	81.85%	90.00%	53,336	0.54	1.95	9.89	128.68	Agricultural	1.31%
▲ BBVAC1 PE**	S/.	2.30	1.77%	7.48%	11.65%	-25.61%	95.00%	125,840	0.73	3.75	11.97	4,163.32	Finance	2.85%
- CORARE1 PE**	S/.	0.88	0.00%	-2.22%	11.39%	-3.30%	95.00%	57,719	0.69	0.00	6.26	323.20	Industrial	1.72%
▼ CPACASC1 PE**	S/.	5.92	-1.33%	-3.74%	9.63%	-3.74%	95.00%	369,935	0.61	6.08	19.10	701.49	Industrial	2.38%
▲ CVERDEC1 PE**	US\$	20.40	2.00%	5.70%	10.33%	5.70%	100.00%	549,560	0.76	0.00	33.16	7,141.14	Mining	5.25%
- ENGEPEC1 PE**	S/.	2.00	0.00%	0.00%	0.00%	-13.04%	50.00%	7,083	0.49	0.00	10.05	1,574.02	Public Services	1.44%
▼ ENDISPC1**	S/.	5.12	-1.92%	-0.97%	-1.54%	-30.34%	70.00%	85,168	0.46	0.40	9.66	906.42	Public Services	0.98%
▼ FERREYC1 PE**	S/.	1.69	-1.74%	-1.74%	-3.43%	-22.83%	100.00%	177,385	0.70	4.54	33.93	457.14	Diverse	4.90%
▲ AENZAC1 PE**	S/.	1.73	1.76%	10.19%	33.08%	1.76%	100.00%	255,157	0.78	0.00	-	418.19	Diverse	4.05%
▲ IFS PE**	US\$	29.85	-0.17%	9.34%	43.51%	-27.02%	95.00%	4,555,865	1.30	5.86	29.72	3,446.11	Diverse	7.22%
- INRETC1 PE**	US\$	35.50	0.00%	2.16%	5.34%	-1.39%	100.00%	142,266	0.62	1.59	28.66	3,649.66	Diverse	5.28%
▼ LUSURC1 PE**	S/.	26.47	-1.96%	0.27%	1.81%	2.80%	85.00%	225,104	0.48	2.45	25.98	3,573.50	Public Services	1.81%
- MINSUR1 PE**	S/.	1.70	0.00%	0.00%	1.80%	8.97%	70.00%	40,334	0.74	0.00	-	1,358.77	Mining	3.09%
- PML PE**	US\$	0.10	0.00%	6.67%	11.63%	71.43%	65.00%	1,015	1.29	0.00	-	25.35	Mining	2.12%
▼ RELAPAC1 PE**	S/.	0.06	-3.23%	-10.45%	-3.23%	-51.22%	85.00%	118,268	0.70	0.00	-	138.38	Industrial	2.12%
▲ SCCO PE**	US\$	60.93	0.43%	5.05%	16.61%	43.60%	90.00%	9,063	0.85	2.46	35.49	47,103.35	Mining	2.14%
▲ SIDERC1 PE**	S/.	0.84	3.70%	5.00%	20.00%	-5.62%	95.00%	10,880	0.87	40.74	9.98	285.96	Industrial	1.43%
▲ TV PE**	US\$	0.15	0.67%	0.67%	51.00%	-12.72%	85.00%	13,218	1.52	0.00	-	121.19	Mining	2.93%
- UNACEMC1 PE**	S/.	1.48	0.00%	2.07%	13.85%	-26.00%	95.00%	875,395	0.90	1.76	72.01	746.00	Industrial	3.00%
▲ VOLCABC1 PE**	S/.	0.41	0.74%	-0.49%	7.98%	-8.76%	100.00%	150,568	0.90	0.00	-	1,769.39	Mining	5.90%
- NEXAPEC1 PE**	S/.	2.72	0.00%	2.26%	13.33%	-21.16%	60.00%	3,982	0.99	0.00	-	996.77	Mining	1.56%

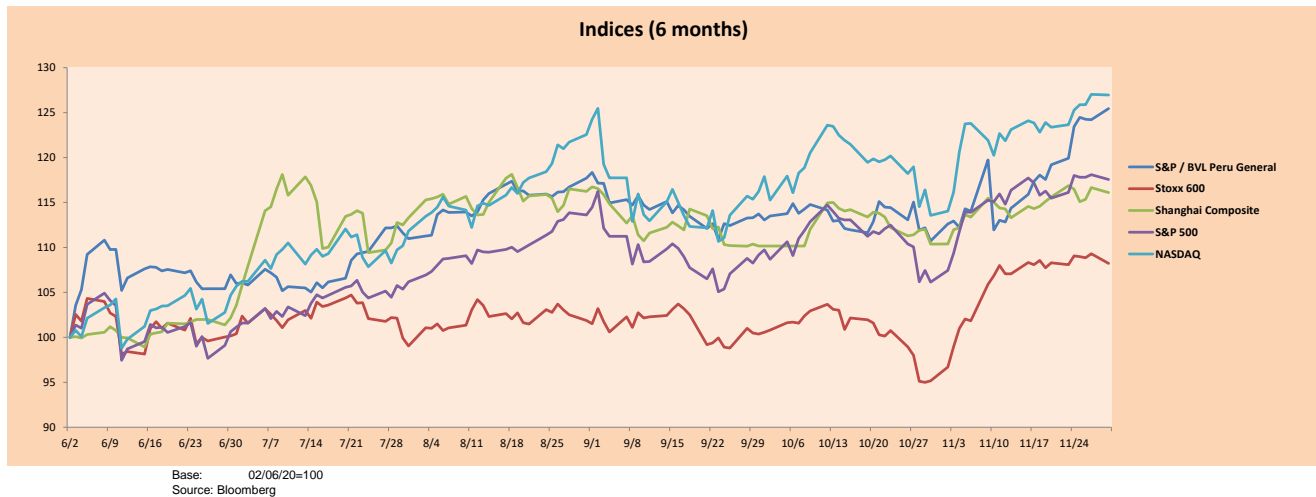
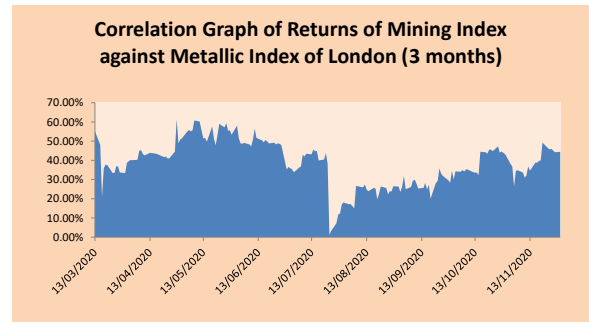
Quantity of shares: 26
 Source: Bloomberg, Economatica
 * Bloomberg Industry Classification System
 ** PER is used in the stock market and original currency of the instrument
 *Legend: Variation 1D: 1 Day; 5D: 5 Days; 1M: 1 Month; YTD: Var.% 12/31/19 to date

Sectorial Indices

	Close	1D*	5D*	30D*	YTD*	Beta
▲ S&P/BVLMining	357.70	0.68%	2.50%	7.81%	17.41%	0.98
▲ S&P/BVLConsumer	1,034.79	0.22%	-0.13%	3.33%	-9.24%	0.41
▲ S&P/BVLIndustrials	186.57	-0.43%	0.78%	11.25%	-11.63%	0.60
▲ S&P/BVLFinancials	993.53	2.60%	12.74%	34.27%	-15.77%	1.61
▲ S&P/BVLConstruction	205.61	0.11%	1.90%	15.99%	-9.28%	0.59
▲ S&P/BVLPublicSvcs	617.14	-1.00%	0.09%	1.19%	-5.28%	0.07
▼ S&P/BVLElectricUtil	602.48	-1.00%	0.09%	1.19%	-5.28%	0.07

S&P/BVLConstructionTRPEN

*Legend: Variation 1D: 1 Day; 5D: 5 Days; 1M: 1 Month; YTD: Var.% 12/31/19 to date



Base: 02/06/20=100
 Source: Bloomberg

Capital Market Laboratory Coordinator: Economist Bruno Bellido
 Collaboration: Piero Best, Luis Davila, Laura Delgado and Alonso Hernández
 email: pulsohorsatil@ulima.edu.pe
 facebook: www.facebook.com/pulsohorsatil.ul

The content of this document is just for informational purposes. The information and opinions expressed should not be considered as recommendations for future decisions. Under any circumstances, the Capital Market Laboratory of University of Lima will be responsible for the use of the statements in this document.

SOVEREIGN RATING

RISK RATINGS

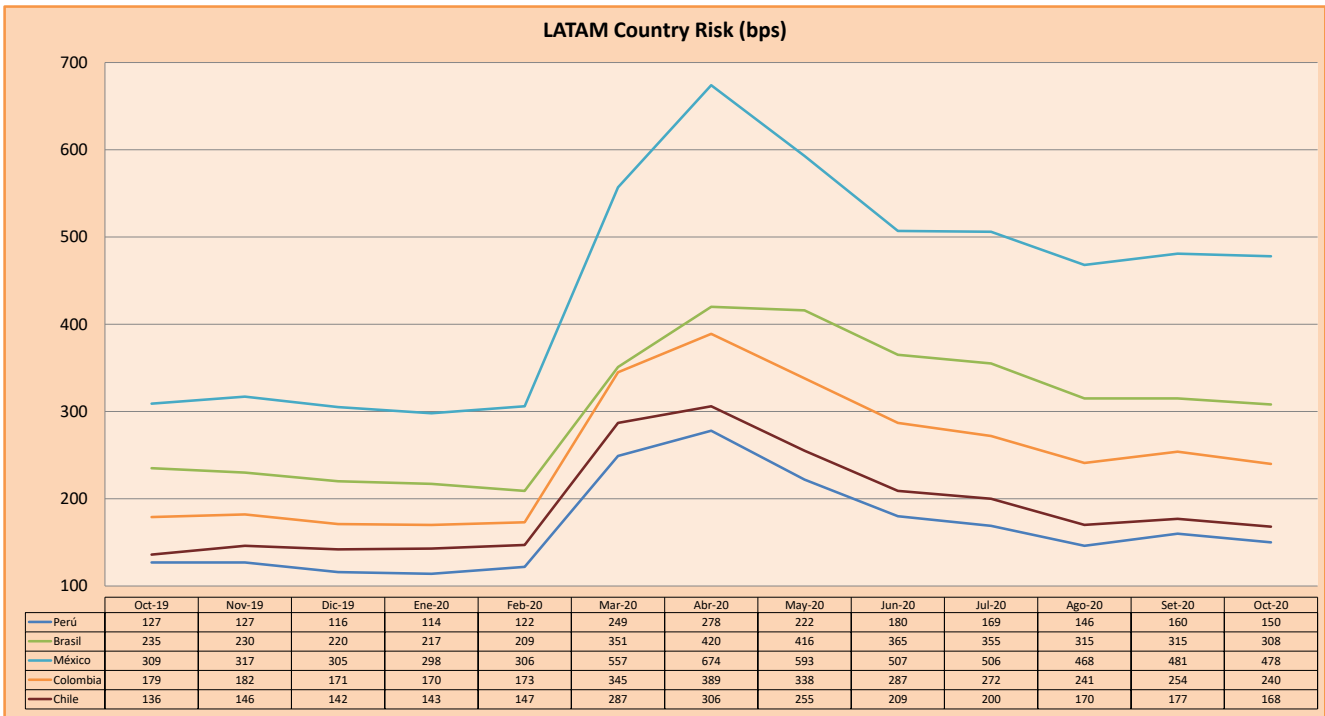
Moody's	S&P	Fitch	
Aaa	AAA	AAA	Prime
Aa1	AA+	AA+	High credit quality
Aa2	AA	AA	
Aa3	AA-	AA-	
A1	A+	A+	Medium-high grade, with low credit risk
A2	A	A	
A3	A-	A-	
Baa1	BBB+	BBB+	Moderate Credit Risk
Baa2	BBB	BBB	
Baa3	BBB-	BBB-	
Ba1	BB+	BB+	It has speculative elements and it is subject to substantial credit risk
Ba2	BB	BB	
Ba3	BB-	BB-	
B1	B+	B+	It is considered speculative and it has high credit risk
B2	B	B	
B3	B-	B-	
Caa1	CCC+		Bad credit conditions and it is subject to high credit risk
Caa2	CCC		
Caa3	CCC-	CCC	
Ca	C		Very close to default or in default
		DDD	
C	D	DD D	

Source: Bloomberg

Latin America Credit Rating			
Clasificadora de riesgo			
Country	Moody's	Fitch	S&P
Peru	A3	BBB+	BBB+
México	Ba2	BB-	BB-
Venezuela	C	WD	SD
Brazil	Ba2	BB-	BB-
Colombia	Baa2	BBB-	BBB-
Chile	A1	A-	A+
Argentina	Ca	WD	CCC+
Panama	Baa1	BBB	BBB

Source: Bloomberg

LATAM Country Risk (bps)



Source: BCRP

Capital Market Laboratory Coordinator: Economist Bruno Bellido
Collaboration: Piero Best, Luis Davila, Laura Delgado and Alonso Hernández
email: pulsobursatil@ulima.edu.pe
facebook: www.facebook.com/pulsobursatil.ul