

# PULSO BURSÁTIL

FACULTAD DE CIENCIAS EMPRESARIALES Y ECONÓMICAS  
CARRERA DE ECONOMÍA  
LABORATORIO DE MERCADO DE CAPITALES

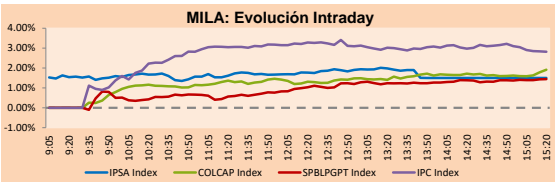


## MILA

Lima, december 1, 2020

Main Indexes	Close	1 D	5 D	1 M	YTD	Cap. Burs. (US\$ bill)
▲ IPSA (Chile)	4,110.59	1.93%	-2.07%	15.11%	-11.98%	105.71
▲ IGPA (Chile)	20,567.70	1.67%	-1.72%	13.93%	-12.08%	130.11
▲ COLCAP (Colombia)	978.65	1.33%	1.75%	11.53%	0.06%	5.44
▲ COLCAP (Colombia)	1,285.12	2.16%	1.14%	13.05%	-22.70%	76.87
▲ S&P/BVL (Perú)*	20,146.31	1.77%	3.42%	13.35%	-1.85%	100.96
▲ S&P/BVL SEL (Perú)	530.54	1.68%	2.23%	12.56%	-0.17%	83.02
▲ S&P/BVL LIMA 25	24,385.53	1.13%	1.11%	11.78%	-5.31%	100.11
▲ IPC (México)	42,895.63	2.47%	1.76%	15.97%	-1.48%	272.11
▲ S&P MILA 40	487.25	1.77%	6.02%	17.46%	-19.20%	221.69

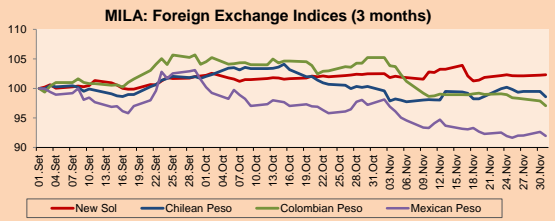
\*Legend: Variation 1D: 1 day; 5D: 5 days; 1M: 1 Month; YTD: Var% 12/31/19 to date



Source: Bloomberg

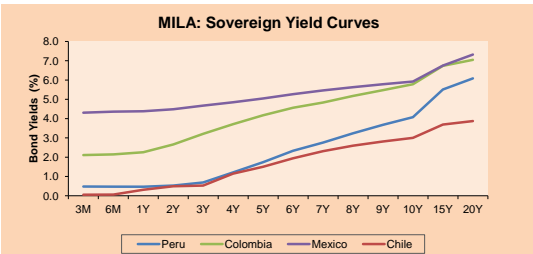
Currency	Price	1D*	5D*	30 D*	YTD*
▲ New Sol (PEN)	3,6093	0.06%	-0.01%	-0.17%	8.97%
▲ Chilean Peso (CLP)	760.35	-0.91%	-1.62%	-1.75%	1.14%
▲ Colombian Peso (COP)	3,570.65	-0.84%	-1.90%	-7.76%	8.96%
▲ Mexican Peso (MXN)	20.03	-0.73%	0.03%	-5.41%	5.84%

\*Legend: Variation 1D: 1 day; 5D: 5 days; 1M: 1 Month; YTD: Var% 12/31/19 to date



Base: 01/09/20=100  
Source: Bloomberg

Fixed Income	Currency	Price	Bid Yield (%)	Ask Yield (%)	Duration
PERU 7.35 07/21/25	USD	127.599	1.26	1.15	3.99
PERU 4.125 08/25/27	USD	116.406	1.59	1.51	5.95
PERU 8.75 11/21/33	USD	166.967	2.67	2.57	9.15
PERU 6.55 03/14/37	USD	149.023	2.83	2.74	10.84
PERU 5.625 11/18/2050	USD	153.43	2.95	2.91	17.72
CHILE 2.25 10/30/22	USD	103.333	0.62	0.37	1.87
CHILE 3.125 01/21/26	USD	110.417	1.08	0.99	4.75
CHILE 3.625 10/30/42	USD	115.04	2.74	2.68	15.95
COLOM 11.85 03/09/28	USD	165.478	2.20	1.98	5.47
COLOM 10.375 01/28/33	USD	159.073	4.24	4.04	7.86
COLOM 7.375 05/19/37	USD	144.062	3.85	3.75	10.91
COLOM 6.125 01/18/41	USD	132.264	3.85	3.78	12.71
MEX 4 10/02/23	USD	132.264	3.847	3.781	12.71
MEX5.55 01/45	USD	127.973	3.79	3.76	14.56



Source: Bloomberg

### Equity

Largest gains	Exchange	Currency	Price	▲%
GRUPO AEROPORTUA	Mexico	MXN	132.22	12.65
CEMEX SAB-CPO	Mexico	MXN	10.02	8.91
CERVEZAS	Chile	CLP	5752.10	6.72
BUENAVENTURA-ADR	Peru	USD	11.68	6.47
INDUSTRIAS PENOL	Mexico	MXN	315.49	6.37

Per Turnover	Exchange	Amount (US\$)
GRUPO F BANORT-O	Mexico	88,704,318
WALMART DE MEXIC	Mexico	54,878,673
GRUPO MEXICO-B	Mexico	48,533,133
AMERICA MOVIL-L	Mexico	44,985,619
ENEL AMERICAS SA	Chile	39,545,985

Largest losses	Exchange	Currency	Price	▼%
BOLSA MEXICANA	Mexico	MXN	44.9	-1.79
SONDA SA	Chile	CLP	497	-1.68
ENGIE ENERGIA CH	Chile	CLP	905	-1.63
AMERICA MOVIL-L	Mexico	MXN	14.89	-1.52
CENCOSUD SHOPPIN	Chile	CLP	1249.8	-1.43

Per Volume	Exchange	Volume
BANCO SANTANDER	Chile	327,278,504
ENEL AMERICAS SA	Chile	266,490,158
ITAU CORPBANCA	Chile	260,499,424
BANCO DE CHILE	Chile	153,979,723
ENEL CHILE SA	Chile	113,830,338

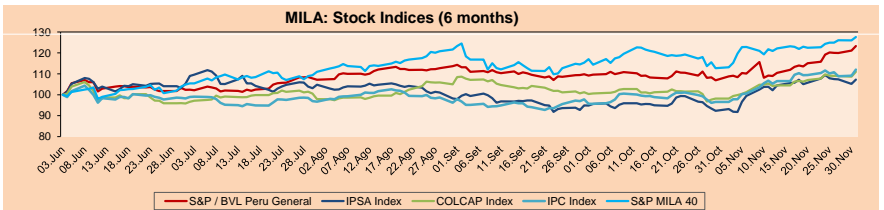
### MILA

Peru: The General Index of the BVL ended today's session with a positive result of +1.77%. The index maintains an annual accumulated negative trend of -1.85% in local currency, while the adjusted yield in dollars amounts to -9.93%. Then, the S&P / BVL Peru SEL varied by +1.68% while the S&P / BVL LIMA 25 by +1.13%. The PEN spot reached \$ / 3.6093. Headline: Mining and Hydrocarbons fell 2.83% in October, Fishing grew 12.35%.

Chile: The IPSA index ended the day with a positive return of +1.93%. The sectors that benefited the most during the session were Non-Basic Consumer Products (+3.86%) and Finance (+3.25%). The stocks with the best performance were Compañía Cervecerías Unidas SA (+6.72%) and Empresa CMPC SA (+6.36%). Headline: The Chilean economy disappoints in October and records its eighth consecutive decline.

Colombia: The COLCAP index ended the day with a positive return of +2.16%. The sectors that benefited the most during the session were Materials (+2.80%) and Public Services (+2.38%). The stocks with the best performance were Promigas SA (+4.00%) and Empresa de Energía de Bogotá (+3.52%). Headline: Value of Colombia's exports falls 21% in October due to less oil and coal sales.

Mexico: The IPC index closed the day with a positive return of +2.67%. The sectors that benefited the most during the session were Materials (+4.65%) and Industrial (+4.24%). The stocks with the best performance were Grupo Aeroportuario del Centro (+12.65%) and Cemex SAB de CV (+8.91%). Headline: Mexican Grupo Lala announces the closure of its operations in Costa Rica.

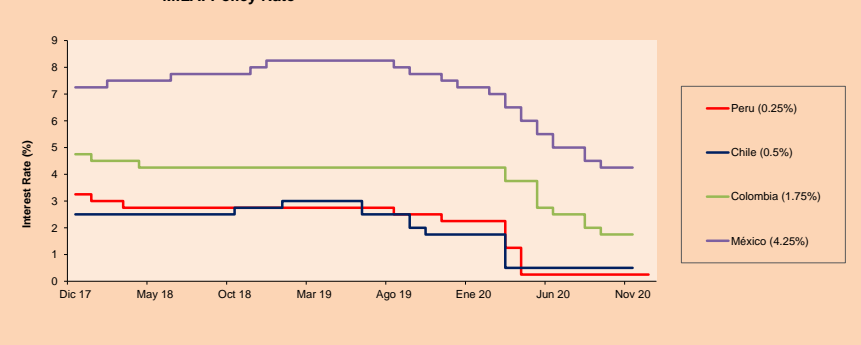


Base: 04/06/20=100  
Source: Bloomberg

### ETFs

ETFs	Curr.	Close	1D	5D	30 D	YTD	Exchange
▲ iShares MSCI All Peru Caped Index Fund	USD	33.99	1.77%	3.22%	16.02%	-8.26%	NYSE Arca
▲ iShares MSCI All Chile Caped Index Fund	USD	28.2	4.87%	-0.04%	17.99%	-15.39%	Cboe BZX
▲ Global X MSCI Colombia	USD	9.8538	4.05%	1.27%	21.05%	-29.11%	NYSE Arca
▲ iShares MSCI Mexico Capped	USD	42.05	3.65%	0.48%	23.10%	-6.62%	NYSE Arca
▲ iShares FTSE Emerging Markets	USD	49.69	1.97%	-0.32%	11.14%	10.74%	NYSE Arca
▲ Vanguard FTSE Emerging Markets	USD	48.55	2.08%	0.04%	10.82%	9.17%	NYSE Arca
▲ iShares Core MSCI Emerging Markets	USD	59.76	1.94%	-0.10%	11.76%	11.16%	NYSE Arca
▲ iShares JP Morgan Emerging Markets Bonds	USD	59.96	1.46%	-0.05%	9.10%	2.22%	Cboe BZX
▲ Morgan Stanley Emerging Markets Domestic	USD	6.2	0.81%	1.81%	10.91%	-11.30%	New York

### MILA: Policy Rate



Source: Bloomberg

Capital Market Laboratory Coordinator: Economist Bruno Bellido  
Collaboration: Piero Best, Luis Davila, Laura Delgado and Alonso Hernández  
email: pulsobursatil@ulima.edu.pe  
facebook: www.facebook.com/pulsobursatil.ul

The content of this document is just for informational purposes. The information and opinions expressed should not be considered as recommendations for future decisions. Under any circumstances, the Capital Market Laboratory of University of Lima will be responsible for the use of the statements in this document.

# PULSO BURSÁTIL

FACULTAD DE CIENCIAS EMPRESARIALES Y ECONÓMICAS  
CARRERA DE ECONOMÍA  
LABORATORIO DE MERCADO DE CAPITALES



## WORLD

Main Indices	Close	1 D*	5 D*	1 M*	YTD*	Market Cap. (US\$ Mill.)
▲ Dow Jones (USA)	29,823.92	0.63%	0.79%	10.77%	4.50%	9,269,993
▲ Standard & Poor's 500 (EEUU)	3,662.45	1.13%	2.37%	10.64%	13.36%	31,694,875
▲ NASDAQ Composite (USA)	12,355.11	1.28%	3.99%	12.75%	37.70%	19,861,156
▲ Stoxx EUROPE 600 (Europe)	391.90	0.65%	-0.12%	12.66%	-5.76%	8,898,567
▲ DAX (Germany)	13,382.30	0.89%	0.68%	13.52%	1.01%	1,011,813
▲ FTSE 100 (United Kingdom)	6,384.73	1.89%	-0.74%	12.90%	-15.35%	1,361,062
▲ CAC 40 (France)	5,581.64	1.14%	0.42%	18.98%	-6.63%	1,480,149
▲ IBEX 35 (Spain)	8,140.80	0.79%	-0.03%	23.62%	-14.75%	440,176
▲ MSCI AC Asia Pacific Index	191.07	0.98%	-0.19%	9.95%	11.96%	24,525,584
▲ HANG SENG (Hong Kong)	26,567.68	0.96%	-0.06%	8.50%	-5.85%	3,720,697
▲ SHANGHAI SEC Comp. (China)	3,451.94	1.77%	1.44%	7.12%	13.27%	6,385,089
▲ NIKKEI 225 (Japan)	26,787.54	1.34%	2.38%	14.86%	13.10%	3,781,379
▲ S&P / ASX 200 (Australia)	6,588.54	1.09%	-0.84%	10.67%	-1.46%	1,535,008
▲ KOSPI (South Korea)	2,634.25	2.67%	0.37%	16.11%	21.53%	1,577,152

\*Legend: Variation 1D: 1 Day; 5D: 5 Days; 1M: 1 Month; YTD: Var.% 12/31/19 to date

## Equity

Germany (Stocks from DAX Index)

Largest gains	Curr.	Price	▲%	Exchange	Largest losses	Curr.	Price	▼%	Exchange
CON GY	EUR	118.85	4.07	Xetra	DHER GY	EUR	99.48	-1.75	Xetra
MUV2 GY	EUR	242.5	3.81	Xetra	VNA GY	EUR	56.72	-1.32	Xetra
MTX GY	EUR	203.7	2.90	Xetra	HEN3 GY	EUR	89.26	-1.09	Xetra
BMW GY	EUR	74.78	2.38	Xetra	DB1 GY	EUR	138.25	-1.07	Xetra

Europe (Stocks from STOXX EUROPE 600)

Largest gains	Curr.	Price	▲%	Exchange	Largest losses	Curr.	Price	▼%	Exchange
BIRG ID	EUR	2.87	8.79	EN Dublin	UCG IM	EUR	7.95	-8.02	Borsa Italiana
TW/LN	Gbp	166.05	7.86	Londres	AVV LN	Gbp	3.181	-8.22	Londres
MRO LN	Gbp	165.4	7.75	Londres	KNV0 SS	SEK	404.65	-5.22	Stockholm
ITV LN	Gbp	101.35	7.73	Londres	DLG GY	EUR	42	-5.02	Xetra

## Global Overview:

### United States:

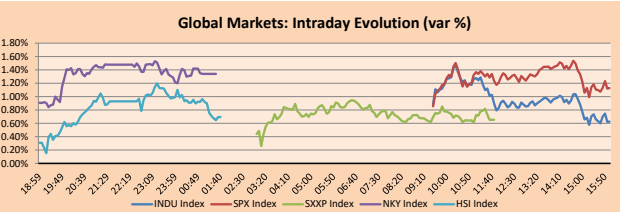
US markets closed the day with positive returns driven by optimism in advance of vaccines. Investors remained focused on updates on a pool of candidate vaccines as global shipments begin and drug manufacturers submit documentation for regulatory approvals. Adding to the optimism, global markets were given a boost thanks to data showing China's manufacturing activity in November increased faster than expected. Several other countries also reported strong spikes in manufacturing activity. On the other hand, investors also closely followed the statements of the United States Secretary of the Treasury, Steve Mnuchin, and the president of the Federal Reserve, Jerome Powell, in the Senate Banking Committee, where they agreed on the need for a greater package of support for small businesses. Along the same lines, a bipartisan group of lawmakers unveiled a \$ 908 billion COVID-19 relief bill aimed at breaking a months-long deadlock between Democrats and Republicans on new emergency assistance for small businesses, unemployed people, airlines and other industries during the pandemic. In this way, the main indices S&P 500 + 1.13%, DJIA + 0.63% and NASDAQ + 1.28% closed higher.

### Europe:

European markets closed today's session with positive returns, supported by negotiations by Pfizer and BioNTech to seek emergency approval from the European regulator of its vaccine candidate, while Moderna announced that it is seeking conditional approval. The European Basic Materials Index SXPP + 0.68% remained in the lead, thanks to data showing China's manufacturing activity in November increased faster than expected. On the other hand, the European Central Bank is preparing for the next week to talk about a relaxation of the policy, especially after Tuesday's data showing a drop in inflation for the fourth consecutive month. On Brexit, Michael Gove pointed out that a turbulent exit is possible without a trade agreement from the European Union, as negotiations remain stalled around fisheries, governance rules and dispute resolution. In corporate actions, the Italian company Unicredit posted its worst day since March of -8%, after announcing that the CEO will step down in April next year due to disagreements with the board. For today's close, the main indexes Stoxx 600 + 0.65%, FTSE 100 + 1.89%, CAC 40 + 1.14% and DAX + 0.69% culminated with higher results.

### Asia:

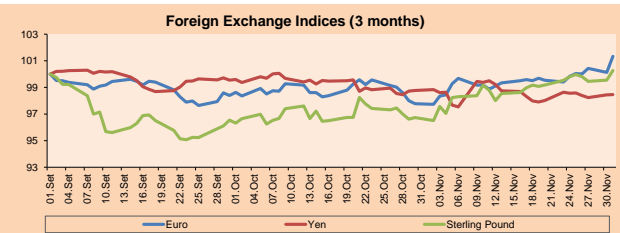
The main Asian markets closed the day's session with positive results, of which China had an increase in the CSI 300 of + 2.15% thanks to the Caixin Purchasing Managers Index (PMI), which reported a value of 54.9 and showed the fastest growing manufacturing sector in the decade for the month of November. Also, optimism in the economy spread after Moderna Inc. said on Monday that it had requested emergency clearance from the US, fostering a speedy recovery in the region. In South Korea, strong global demand for memory chips drove semiconductor sales growth by + 16.4% and helped boost November exports by + 4% over the previous year. In the case of Australia, the Reserve Bank kept the reference rates at 0.1%, and supported the demand for housing and the dynamism of the construction sector. On the other hand, Carrie Lam Cheng, leader of the city of Hong Kong, announced that strict measures of social distancing will be adopted again to face an increase in the number of infected. Lastly, the NIKKEI + 1.34%, Shanghai Composite + 1.77%, Shenzhen Composite + 1.64%, Hang Seng + 0.86%, S & P / ASX 200 + 1.09% and KOSPI + 1.66% closed the day higher.



Source: Bloomberg

Currency	Price	1 D*	5 D*	1 M*	YTD*
▲ Euro	1.2071	1.21%	1.51%	3.64%	7.65%
▲ Yen	104.3300	0.02%	-0.11%	-0.32%	-3.94%
▲ Sterling Pound	1.3420	0.73%	0.47%	3.65%	1.23%
▼ Yuan	6.5722	-0.10%	-0.29%	-1.78%	-5.62%
▼ Hong Kong Dollar	7.7518	0.01%	0.00%	-0.01%	-0.51%
▼ Brazilian Real	5.2183	-2.63%	-2.92%	-9.17%	29.47%
▲ Argentine Peso	81.4348	0.16%	0.92%	3.97%	36.01%

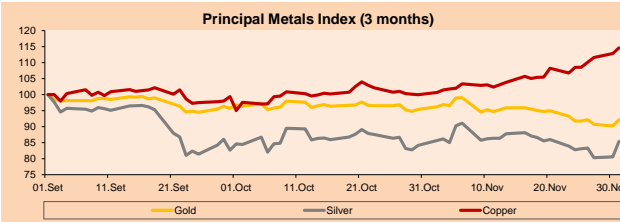
\*Legend: Variación 1D: 1 Día; 5D: 5 Days; 1M: 1 Mes; YTD: Var.% 31/12/19 a la fecha



Base: 01/09/20=100  
Source: Bloomberg

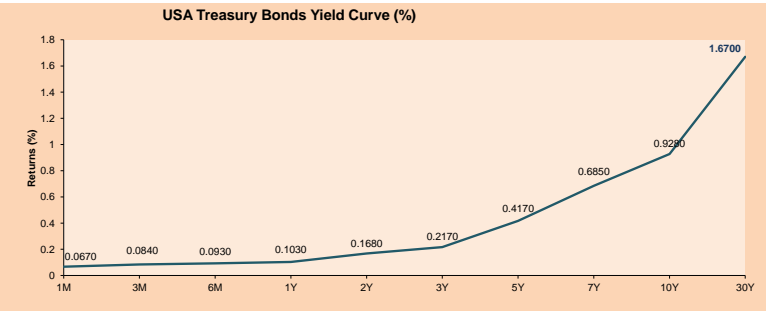
Commodities	Close	1 D*	5 D*	1 M*	YTD*
▲ Oro (US\$ Oz. T) (LME)	1,815.24	2.19%	0.42%	3.38%	19.84%
▲ Plata (US\$ Oz. T) (LME)	24.00	0.00%	3.15%	1.46%	34.45%
▲ Cobres (US\$ TM) (LME)	7,688.00	1.57%	5.62%	14.62%	25.03%
▼ Zinc (US\$ TM) (LME)	2,752.50	-0.85%	0.36%	9.50%	20.75%
▼ Petróleo WTI (US\$ Barril) (NYM)	44.55	-1.74%	-0.80%	23.24%	-20.49%
▲ Estano (US\$ TM) (LME)	18,897.00	1.37%	0.99%	6.62%	10.01%
▲ Plomo (US\$ TM) (LME)	2,074.25	0.62%	3.28%	14.82%	8.40%
- Azúcar #11 (US\$ Libra) (NYB-ICE)	14.51	0.00%	-3.52%	1.04%	0.90%
▼ Cacao (US\$ TM) (NYB-ICE)	2,691.00	-1.75%	-3.38%	16.75%	10.65%
▼ Café Arabica (US\$ TM) (NYB-ICE)	118.45	-3.93%	2.20%	10.86%	-15.42%

\*Legend: Variación 1D: 1 Día; 5D: 5 Days; 1M: 1 Mes; YTD: Var.% 31/12/19 a la fecha



Base: 01/09/20=100  
Source: Bloomberg

ETFs	Curr.	Close	1D	5D	30 D	YTD	Exchange
SPDR S&P 500 ETF TRUST	USD	366.02	1.09%	0.77%	12.09%	13.72%	NYSE Arca
ISHARES MSCI EMERGING MARKET	USD	49.69	1.97%	-0.32%	11.14%	10.74%	NYSE Arca
ISHARES IBOXX HIGH YLD CORP	USD	86.20	-0.14%	-0.13%	2.77%	-1.98%	NYSE Arca
FINANCIAL SELECT SECTOR SPDR	USD	28.31	1.54%	-1.22%	18.65%	-8.02%	NYSE Arca
VANECK GOLD MINERS	USD	36.96	3.69%	7.80%	-4.08%	22.81%	NYSE Arca
ISHARES RUSSELL 2000 ETF	USD	182.70	0.93%	-0.83%	19.94%	10.29%	NYSE Arca
SPDR GOLD SHARES	USD	170.18	2.11%	0.35%	-3.42%	19.09%	NYSE Arca
ISHARES 20+ YEAR TREASURY BO	USD	157.50	-1.57%	-1.05%	-0.04%	16.25%	NASDAQ GM
INVESCO QQQ TRUST SERIES 1	USD	303.46	1.28%	3.05%	12.65%	42.73%	NASDAQ GM
ISHARES NASDAQ BIOTECHNOLOGY	USD	145.32	0.23%	5.11%	11.25%	20.59%	NASDAQ GM
ENERGY SELECT SECTOR SPDR	USD	36.93	0.46%	-8.39%	28.59%	-38.49%	NYSE Arca
PROSHARES ULTRA VIX ST FUTUR	USD	11.29	1.25%	-5.84%	-47.68%	-12.41%	NYSE Arca
UNITED STATES OIL FUND LP	USD	30.62	-1.13%	-0.58%	21.27%	-70.12%	NYSE Arca
ISHARES MSCI BRAZIL ETF	USD	34.89	4.93%	4.34%	29.90%	-26.47%	NYSE Arca
SPDR S&P OIL & GAS EXP & PR	USD	53.80	-0.48%	-9.76%	32.58%	-43.25%	NYSE Arca
UTILITIES SELECT SECTOR SPDR	USD	63.28	0.70%	-1.48%	1.44%	-2.07%	NYSE Arca
ISHARES US REAL ESTATE ETF	USD	85.12	1.14%	0.04%	9.82%	-8.55%	NYSE Arca
SPDR S&P BIOTECH ETF	USD	132.84	-0.20%	5.46%	17.89%	39.77%	NYSE Arca
ISHARES IBOXX INVESTMENT GRA	USD	137.68	-0.58%	0.18%	2.95%	7.80%	NYSE Arca
ISHARES JP MORGAN USD EMERGI	USD	114.14	-0.10%	-0.04%	3.74%	-0.37%	NASDAQ GM
REAL ESTATE SELECT SECT SPDR	USD	36.96	1.26%	0.43%	8.23%	-4.42%	NYSE Arca
ISHARES CHINA LARGE-CAP ETF	USD	47.48	1.02%	-0.06%	7.66%	8.82%	NYSE Arca
CONSUMER STAPLES SPDR	USD	67.50	0.88%	0.79%	8.42%	7.18%	NYSE Arca
VANECK JR GOLD MINERS	USD	52.71	5.36%	9.58%	-0.94%	24.73%	NYSE Arca
SPDR BBG BARC HIGH YIELD BND	USD	107.54	0.01%	0.00%	3.11%	-1.83%	NYSE Arca
VANGUARD REAL ESTATE ETF	USD	85.08	1.29%	-0.16%	11.08%	-8.31%	NYSE Arca
GRAYSCALE BITCOIN TRUST BTC	USD	23.74	2.36%	6.17%	54.36%	189.87%	OTC US



Source: Bloomberg

Capital Market Laboratory Coordinator: Economist Bruno Bellido  
Collaboration: Piero Best, Luis Davila, Laura Delgado and Alonso Hernandez  
email: pulsobursatil@ulima.edu.pe  
facebook: www.facebook.com/pulsobursatil.ulima

LIMA

Stocks

Ticker	Currency	Price	1D*	5D*	30D*	YTD*	Frequency	Volume (US\$)	Beta	Dividend Yield (%)	Price Earning	Market Cap. (M US\$)	Economic Sector*	Index Weight
▲ ALICORC1 PE**	S/.	7.10	1.33%	1.75%	11.53%	0.06%	100.00%	2,058,317	0.76	3.52	16.33	1,681.08	Industrial	3.53%
▲ ATACOB1 PE**	S/.	0.15	0.00%	0.00%	16.00%	-12.12%	40.00%	469	1.10	0.00	-	37.96	Mining	1.02%
- BACKUS1 PE**	S/.	19.50	0.00%	0.52%	2.63%	-31.58%	90.00%	52,122	0.52	3.35	8.82	8,253.31	Industrial	0.82%
▲ BAP PE**	US\$	157.49	2.10%	7.50%	38.03%	-25.95%	100.00%	6,673,449	1.55	5.59	-	14,864.27	Diverse	5.82%
▲ BVN PE**	US\$	11.68	6.47%	7.75%	-2.67%	-23.66%	95.00%	596,319	1.36	0.22	-	3,219.41	Mining	5.88%
▲ CASAGRC1 PE**	S/.	5.91	7.26%	15.43%	18.20%	95.05%	90.00%	97,831	0.57	1.81	10.61	137.93	Agricultural	1.31%
▲ BBVAC1 PE**	S/.	2.34	1.74%	4.46%	13.59%	-24.32%	95.00%	168,303	0.74	3.69	12.18	4,233.02	Finance	2.85%
▲ CORARE1 PE**	S/.	0.87	-1.14%	-3.33%	10.13%	-4.40%	95.00%	41,120	0.67	5.44	6.18	322.44	Industrial	1.72%
▲ CPACASC1 PE**	S/.	6.00	1.35%	-2.28%	11.11%	-2.44%	95.00%	537,393	0.62	6.00	19.35	710.44	Industrial	2.38%
▲ CVERDEC1 PE**	US\$	20.60	0.98%	3.52%	11.41%	6.74%	100.00%	472,522	0.76	0.00	33.48	7,211.15	Mining	5.25%
- ENGEPEC1 PE**	S/.	2.00	0.00%	-2.44%	0.00%	-13.04%	45.00%	286	0.49	0.00	10.05	1,573.02	Public Services	1.44%
- ENDISPC1**	S/.	5.12	0.00%	-0.97%	-1.54%	-30.34%	70.00%	76,840	0.46	0.40	9.66	905.84	Public Services	0.98%
▲ FERREYC1 PE**	S/.	1.70	0.59%	0.00%	-2.86%	-22.37%	100.00%	264,290	0.70	4.51	34.13	459.55	Diverse	4.90%
- AENZAC1 PE**	S/.	1.73	0.00%	8.12%	33.08%	1.76%	100.00%	234,284	1.78	0.00	-	417.93	Diverse	4.05%
▲ IFS PE**	US\$	30.50	2.18%	4.63%	46.63%	-25.43%	95.00%	260,504	1.30	5.74	30.43	3,521.16	Diverse	7.22%
▲ INRETC1 PE**	US\$	35.80	0.85%	0.85%	6.23%	-0.56%	100.00%	7,268,272	0.62	1.58	28.96	3,680.50	Diverse	5.28%
▲ LUSURC1 PE**	S/.	26.60	0.49%	-1.52%	2.31%	3.30%	90.00%	274,194	0.48	2.44	26.10	3,588.76	Public Services	1.81%
- MINSUR1 PE**	S/.	1.70	0.00%	0.00%	1.80%	8.97%	70.00%	2,087	0.74	0.00	-	1,357.91	Mining	3.09%
▲ PML PE**	US\$	0.09	-4.17%	2.22%	6.98%	64.29%	65.00%	4,143	1.29	0.00	-	24.31	Mining	2.12%
▲ RELAPAC1 PE**	S/.	0.06	5.00%	-7.35%	1.61%	-48.78%	90.00%	8,889	0.73	0.00	-	145.21	Industrial	2.12%
▲ SCCO PE**	US\$	60.39	-0.89%	1.16%	15.58%	42.33%	90.00%	77,507	0.83	2.48	35.18	46,685.89	Mining	2.14%
▲ SIDERC1 PE**	S/.	0.83	-1.19%	3.75%	18.57%	-6.74%	95.00%	11,616	0.87	41.23	9.86	282.37	Industrial	1.43%
▲ TV PE**	US\$	0.15	-3.31%	-12.57%	46.00%	-15.61%	85.00%	49,702	1.52	0.00	-	117.17	Mining	2.93%
▲ UNACEMC1 PE**	S/.	1.50	1.35%	0.00%	15.38%	-25.00%	95.00%	154,200	0.90	1.73	72.99	755.60	Industrial	3.00%
▲ VOLCABC1 PE**	S/.	0.41	-0.25%	-3.57%	7.71%	-8.99%	100.00%	222,039	0.89	0.00	-	1,767.59	Mining	5.90%
- NEXAPEC1 PE**	S/.	2.72	0.00%	-2.86%	13.33%	-21.16%	55.00%	3,979	0.99	0.00	-	996.14	Mining	1.56%

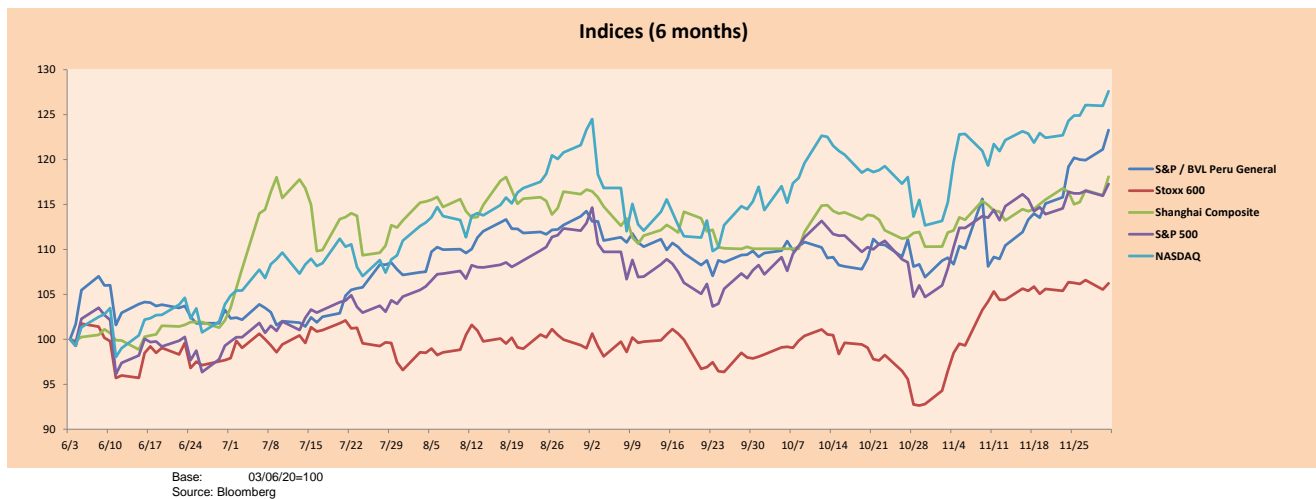
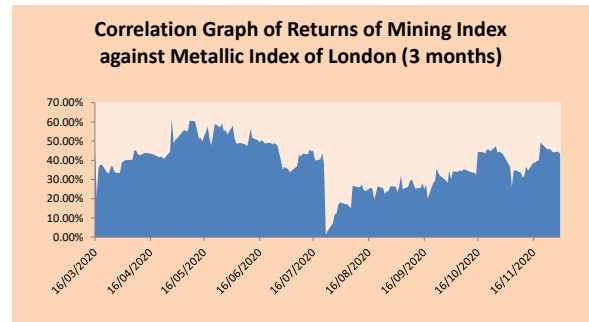
Quantity of shares: 26  
 Source: Bloomberg, Economatica  
 \* Bloomberg Industry Classification System  
 \*\* PER is used in the stock market and original currency of the instrument  
 \*Legend: Variation 1D: 1 Day; 5D: 5 Days; 1M: 1 Month; YTD: Var.% 12/31/19 to date

Sectorial Indices

	Close	1D*	5D*	30D*	YTD*	Beta
▲ S&P/BVLMining	362.49	1.34%	2.67%	9.25%	18.98%	0.98
▲ S&P/BVLConsumer	1,040.39	0.54%	-0.95%	3.89%	-8.75%	0.41
▲ S&P/BVLIndustrials	187.95	0.74%	0.79%	12.08%	-10.97%	0.59
▲ S&P/BVLFinancials	1,014.77	2.14%	7.04%	37.14%	-13.97%	1.61
▲ S&P/BVLConstruction	207.16	0.75%	1.18%	16.86%	-8.59%	0.59
▲ S&P/BVLPublicSvcs	620.84	0.60%	-0.67%	1.79%	-4.71%	0.07
▲ S&P/BVLElectricUtil	606.10	0.60%	-0.67%	1.79%	-4.71%	0.07

S&P/BVLConstructionTRPEN

\*Legend: Variation 1D: 1 Day; 5D: 5 Days; 1M: 1 Month; YTD: Var.% 12/31/19 to date



Capital Market Laboratory Coordinator: Economist Bruno Bellido  
 Collaboration: Piero Best, Luis Davila, Laura Delgado and Alonso Hernández  
 email: pulsohorsatil@ulima.edu.pe  
 facebook: www.facebook.com/pulsohorsatil.ul

The content of this document is just for informational purposes. The information and opinions expressed should not be consider as recommendations for future decisions. Under any circumstances, the Capital Market Laboratory of University of Lima will be responsible for the use of the statements in this document.

### SOVEREIGN RATING

RISK RATINGS

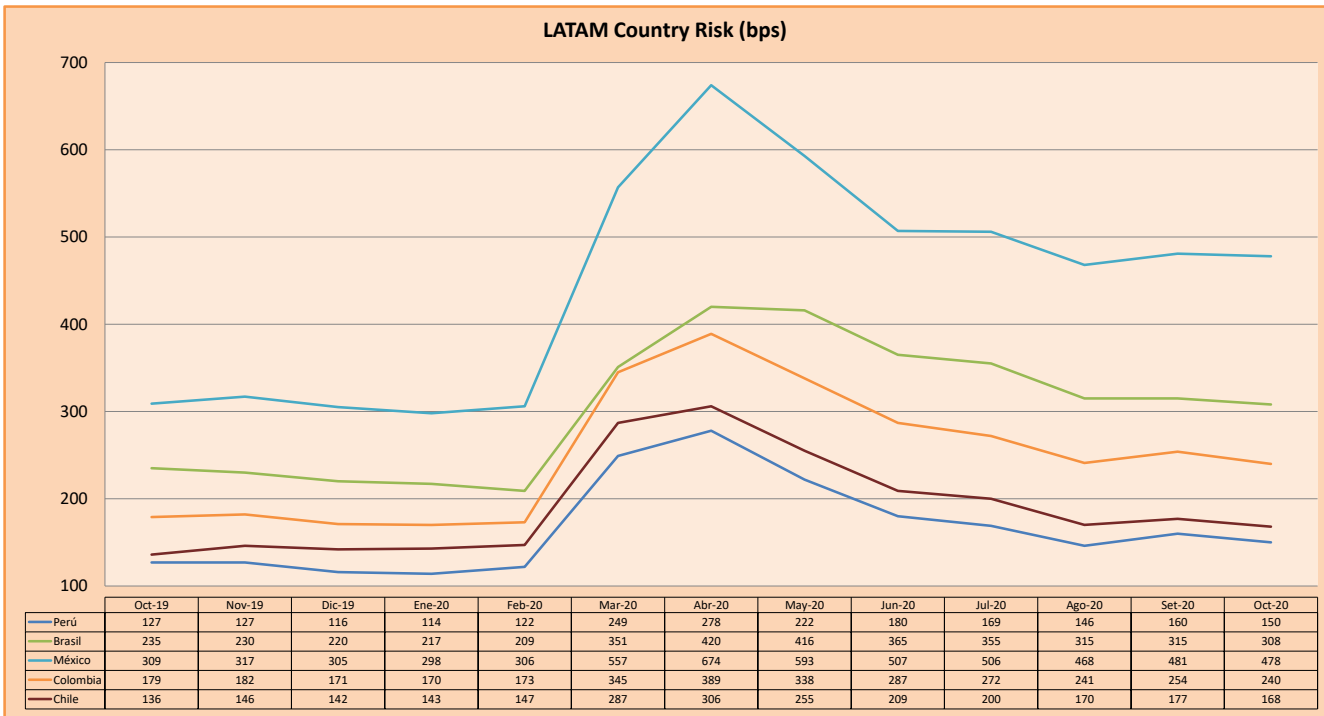
Moody's	S&P	Fitch	
Aaa	AAA	AAA	Prime
Aa1	AA+	AA+	High credit quality
Aa2	AA	AA	
Aa3	AA-	AA-	
A1	A+	A+	Medium-high grade, with low credit risk
A2	A	A	
A3	A-	A-	
Baa1	BBB+	BBB+	Moderate Credit Risk
Baa2	BBB	BBB	
Baa3	BBB-	BBB-	
Ba1	BB+	BB+	It has speculative elements and it is subject to substantial credit risk
Ba2	BB	BB	
Ba3	BB-	BB-	
B1	B+	B+	It is considered speculative and it has high credit risk
B2	B	B	
B3	B-	B-	
Caa1	CCC+		Bad credit conditions and it is subject to high credit risk
Caa2	CCC		
Caa3	CCC-	CCC	
Ca	C		Very close to default or in default
		DDD	
C	D	DD D	

Source: Bloomberg

Latin America Credit Rating			
Clasificadora de riesgo			
Country	Moody's	Fitch	S&P
Peru	A3	BBB+	BBB+
México	Ba2	BB-	BB-
Venezuela	C	WD	SD
Brazil	Ba2	BB-	BB-
Colombia	Baa2	BBB-	BBB-
Chile	A1	A-	A+
Argentine	Ca	WD	CCC+
Panama	Baa1	BBB	BBB

Source: Bloomberg

LATAM Country Risk (bps)



Source: BCRP

Capital Market Laboratory Coordinator: Economist Bruno Bellido  
Collaboration: Piero Best, Luis Davila, Laura Delgado and Alonso Hernández  
email: pulsobursatil@ulima.edu.pe  
facebook: www.facebook.com/pulsobursatil.ul