

PULSO BURSÁTIL

FACULTAD DE CIENCIAS EMPRESARIALES Y ECONÓMICAS
CARRERA DE ECONOMÍA
LABORATORIO DE MERCADO DE CAPITALES

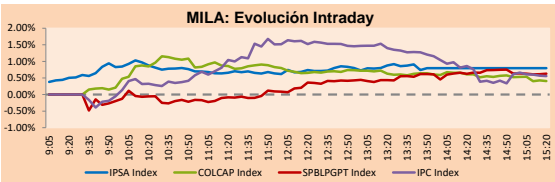


MILA

Lima, november 18, 2020

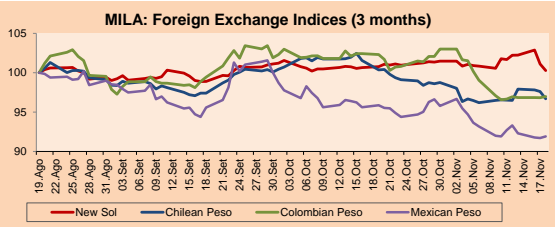
Main Indexes	Close	1 D	5 D	1 M	YTD	Cap. Burs. (US\$ bill)
▲ IPSA (Chile)	4,108.79	1.36%	3.25%	13.13%	-12.01%	105.45
▲ IGPA (Chile)	20,494.35	1.29%	2.94%	11.33%	-12.39%	129.30
▲ COLSC (Colombia)	918.58	0.24%	0.92%	4.51%	-6.08%	4.99
▲ COLCAP (Colombia)	1,234.56	0.31%	1.74%	5.07%	-25.74%	72.95
▲ S&P/BVL (Perú)*	18,629.02	0.60%	4.44%	5.74%	-9.24%	94.02
▲ S&P/BVL SEL (Perú)	492.13	0.40%	4.09%	5.75%	-7.39%	77.20
▲ S&P/BVL LIMA 25	23,277.11	2.07%	5.37%	7.01%	-9.61%	93.21
▲ IPC (México)	42,252.61	1.29%	3.01%	12.21%	-2.96%	263.52
▲ S&P MILA 40	471.14	0.95%	4.75%	14.00%	-21.88%	212.04

*Legend: Variation 1D: 1 day; 5D: 5 days; 1M: 1 Month; YTD: Var% 12/31/19 to date

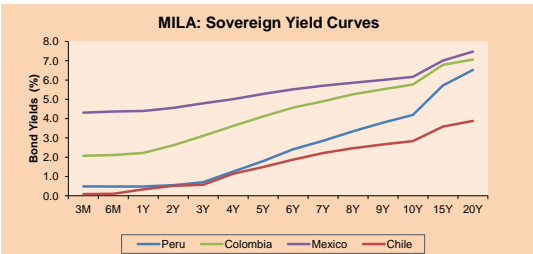


Currency	Price	1D*	5D*	30 D*	YTD*
▼ New Sol (PEN)	3,572.9	-0.83%	-1.37%	-0.48%	7.87%
▼ Chilean Peso (CLP)	757.67	-0.94%	0.17%	-3.65%	0.79%
▲ Colombian Peso (COP)	3,644.92	0.16%	0.35%	-5.20%	11.22%
▲ Mexican Peso (MXN)	20.32	0.23%	-0.86%	-4.13%	7.37%

*Legend: Variation 1D: 1 day; 5D: 5 days; 1M: 1 Month; YTD: Var% 12/31/19 to date



Fixed Income	Currency	Price	Bid Yield (%)	Ask Yield (%)	Duration
PERU 7.35 07/21/25	USD	128.017	1.22	1.12	4.03
PERU 4.125 08/25/27	USD	117.04	1.50	1.44	5.98
PERU 8.75 11/21/33	USD	169.444	2.51	2.43	8.98
PERU 6.55 03/14/37	USD	152.038	2.65	2.57	10.93
PERU 5.625 11/18/2050	USD	159.692	2.73	2.68	18.04
CHILE 2.25 10/30/22	USD	103.377	0.61	0.39	1.91
CHILE 3.125 01/21/26	USD	110.726	1.04	0.94	4.78
CHILE 3.625 10/30/42	USD	115.98	2.69	2.63	16.00
COLOM 11.85 03/09/28	USD	165.522	2.23	2.01	5.50
COLOM 10.375 01/28/33	USD	160.222	4.15	3.97	8.02
COLOM 7.375 08/18/37	USD	146.161	3.72	3.63	11.01
COLOM 6.125 01/18/41	USD	134.757	3.70	3.64	12.84
MEX 4 10/02/23	USD	134.757	3.7	3.639	12.84
MEX5.55 01/45	USD	127.788	3.81	3.76	14.62



Equity

Largest gains	Exchange	Currency	Price	▲ %
VOLCAN CIA MIN-B	Peru	PEN	0.40	6.18
GRUPO FIN INB-O	Mexico	MXN	19.86	5.86
CEMEX SAB-CPO	Mexico	MXN	9.74	4.51
SMU SA	Chile	CLP	116.68	4.46
ITAU CORPBANCA	Chile	CLP	2.17	4.33

Per Turnover	Exchange	Amount (US\$)
WALMART DE MEXIC	Mexico	64,468,037
GRUPO F BANORT-O	Mexico	52,969,358
FOMENTO ECON-UBD	Mexico	40,146,645
AMERICA MOVIL-L	Mexico	36,460,484
GRUPO MEXICO-B	Mexico	31,481,107

Largest losses	Exchange	Currency	Price	▼ %
ALFA SAB-A	Mexico	MXN	15.29	-3.84
GRUPO TELEV-CPO	Mexico	MXN	33.07	-2.28
AMERICA MOVIL-L	Mexico	MXN	14.53	-1.56
ENGIE ENERGIA CH	Chile	CLP	820	-1.32
INDUSTRIAS PENOL	Mexico	MXN	314.64	-1.25

Per Volume	Exchange	Volume
ITAU CORPBANCA	Chile	1,481,861,157
BANCO SANTANDER	Chile	111,900,841
AGUAS ANDINAS-A	Chile	84,876,966
BANCO DE CHILE	Chile	78,187,480
ENEL AMERICAS SA	Chile	75,548,725

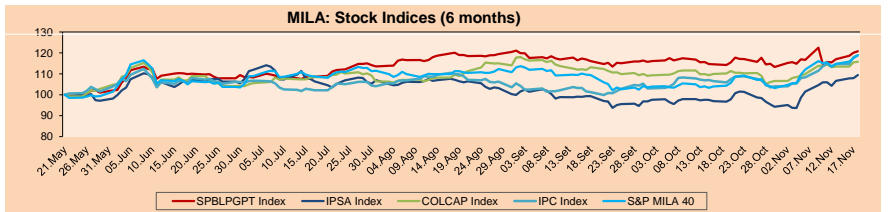
MILA

Peru: The General Index of the BVL ended today's session with a positive result of +0.60%. The index maintains an annual accumulated negative trend of -9.24% in local currency, while the adjusted return in dollars amounts to -15.86%. Then, the S&P / BVL Peru SEL varied by +0.40% while the S&P / BVL LIMA 25 by +2.07%. The PEN spot reached 5 / 3.5729. Headline: Lima Stock Exchange closes in green in line with Wall Street due to optimism about vaccine against COVID-19.

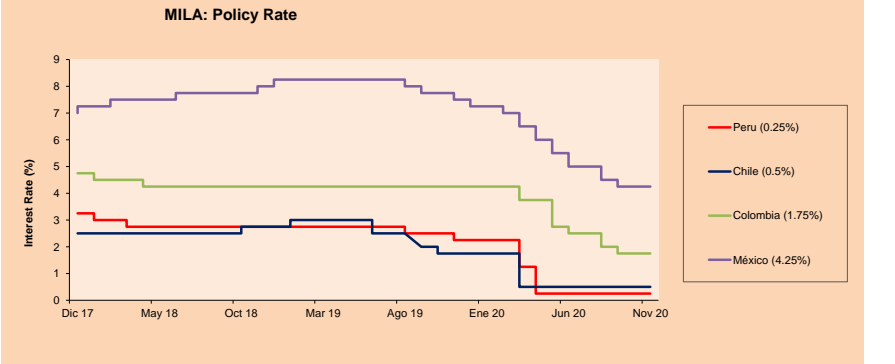
Chile: The IPSA index ended the day with a positive return of +1.36%. The sectors that benefited the most during the session were Communication Services (+3.09%) and Materials (+1.97%). The stocks with the best performance were SMU SA (+4.46%) and Corpbanca (+4.33%). Headline: Chile's economy slows down to 9.1% in the third quarter.

Colombia: The COLCAP index ended the day with a positive return of +0.31%. The sectors that benefited the most during the session were Finance (+0.72%) and Materials (+0.25%). The shares with the best performance were Banco Davivienda SA (+1.68%) and Bancolombia SA (+1.15%). Headline: Colombia will sign contracts with two Canadian companies for four oil blocks.

Mexico: The IPC index closed the day with a positive return of +0.72%. The sectors that benefited the most during the day were Real Estate Goods (+3.01%) and Non-Basic Consumer Products (+2.85%). The stocks with the best performance were Grupo Financiero Inbursa SA (+5.86%) and Cemex SAB de CV (+4.51%). Headline: Brazilian petrochemical company Braskem says its gas contract in Mexico is still active.



ETFs	Curr.	Close	1D	5D	30 D	YTD	Exchange
▲ iShares MSCI All Peru Caped Index Fund	USD	31.76	0.95%	4.75%	7.37%	-14.28%	NYSE Arca
▲ iShares MSCI All Chile Caped Index Fund	USD	27.64	1.04%	0.80%	14.98%	-17.07%	Cboe BZX
▲ Global X MSCI Colombia	USD	9.41	0.64%	1.84%	12.47%	-32.30%	NYSE Arca
▲ iShares MSCI Mexico Capped	USD	40.84	0.27%	4.50%	17.32%	-9.30%	NYSE Arca
▼ iShares MSCI Emerging Markets	USD	48.71	-0.35%	1.44%	7.22%	8.56%	NYSE Arca
▼ Vanguard FTSE Emerging Markets	USD	47.45	-0.34%	1.19%	6.39%	6.70%	NYSE Arca
▼ iShares Core MSCI Emerging Markets	USD	58.39	-0.26%	1.58%	7.41%	8.61%	NYSE Arca
▼ iShares JP Morgan Emerging Markets Bonds	USD	59.36	-0.17%	0.92%	5.79%	1.19%	Cboe BZX
▲ Morgan Stanley Emerging Markets Domestic	USD	6.06	1.00%	3.06%	7.07%	-13.30%	New York



Capital Market Laboratory Coordinator: Economist Bruno Bellido
Collaboration: Piero Best, Luis Davila, Laura Delgado and Alonso Hernández
email: pulsobursatil@ulima.edu.pe
facebook: www.facebook.com/pulsobursatil.ul

The content of this document is just for informational purposes. The information and opinions expressed should not be considered as recommendations for future decisions. Under any circumstances, the Capital Market Laboratory of University of Lima will be responsible for the use of the statements in this document.

PULSO BURSÁTIL

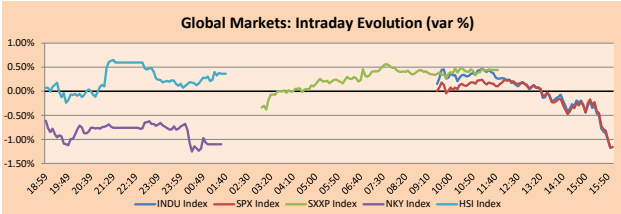
FACULTAD DE CIENCIAS EMPRESARIALES Y ECONÓMICAS
CARRERA DE ECONOMÍA
LABORATORIO DE MERCADO DE CAPITALES



WORLD

Main Indices	Close	1 D*	5 D*	1 M*	YTD*	Market Cap. (US\$ Mill.)
▼ Dow Jones (USA)	29,438.42	-1.16%	0.14%	4.41%	3.15%	9,172,310
▼ Standard & Poor's 500 (EEUU)	3,567.79	-1.16%	-0.14%	4.11%	10.43%	31,225,614
▼ NASDAQ Composite (USA)	11,801.60	-0.82%	0.13%	2.81%	31.53%	19,198,541
▲ Stoxx EUROPE 600 (Europe)	390.54	0.44%	0.51%	6.47%	-6.08%	9,006,530
▲ DAX (Germany)	13,201.89	0.52%	-0.11%	2.70%	-0.36%	1,016,974
▲ FTSE 100 (United Kingdom)	6,385.24	0.31%	0.05%	8.51%	-15.34%	1,323,532
▲ CAC 40 (France)	5,511.45	0.52%	1.22%	11.51%	-7.81%	1,490,253
▲ IBEX 35 (Spain)	7,981.50	0.59%	2.41%	16.35%	-16.42%	440,011
▲ MSCI AC Asia Pacific Index	188.40	0.23%	2.12%	7.89%	10.40%	23,825,748
▲ HANG SENG (Hong Kong)	26,544.29	0.49%	1.21%	8.16%	-5.84%	3,723,211
▲ SHANGHAI SEC Comp. (China)	3,947.30	0.22%	0.15%	1.05%	9.74%	6,197,213
▲ NIKKEI 225 (Japan)	25,728.14	-1.10%	1.49%	8.20%	8.27%	3,728,374
▲ S&P / ASX 200 (Australia)	6,531.10	0.51%	1.26%	4.50%	-2.61%	1,499,372
▲ KOSPI (South Korea)	2,545.64	0.72%	4.57%	8.14%	15.47%	1,511,294

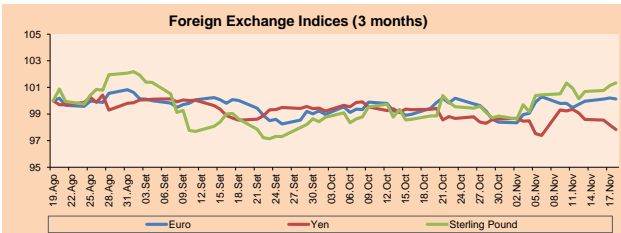
*Legend: Variation 1D: 1 Day; 5D: 5 Days; 1M: 1 Month; YTD: Var.% 12/31/19 to date



Source: Bloomberg

Currency	Price	1 D*	5 D*	1 M*	YTD*
▼ Euro	1.1853	-0.08%	0.65%	0.71%	5.71%
▼ Yen	103.8200	-0.36%	-1.53%	-1.53%	-4.41%
▲ Sterling Pound	1.3273	0.20%	0.39%	2.51%	0.12%
▲ Yuan	6.5605	0.06%	-1.06%	-1.83%	-5.78%
▲ Hong Kong Dollar	7.7528	0.00%	-0.02%	0.03%	-0.50%
▲ Brazilian Real	5.3631	0.72%	-0.68%	-4.41%	33.07%
▲ Argentine Peso	80.1582	0.15%	0.84%	3.33%	33.88%

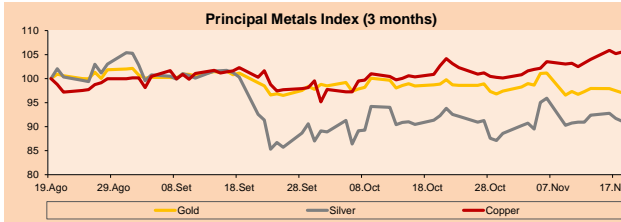
*Legend: Variation 1D: 1 Day; 5D: 5 Days; 1M: 1 Month; YTD: Var.% 12/31/19 to date



Base: 19/08/20=100
Source: Bloomberg

Commodities	Close	1 D*	5 D*	1 M*	YTD*
▼ Oro (US\$ Oz. T) (LME)	1,872.24	-0.43%	0.35%	-1.67%	23.40%
▼ Plata (US\$ Oz. T) (LME)	24.34	-0.63%	0.24%	-0.21%	38.32%
▲ Cobalt (US\$ TM) (LME)	7,069.50	0.32%	2.96%	4.60%	14.97%
▲ Zinc (US\$ TM) (LME)	2,742.00	2.34%	5.14%	10.84%	20.29%
▲ Petróleo WTI (US\$ Barril) (NYM)	41.82	0.94%	0.89%	1.85%	-25.90%
▼ Estano (US\$ TM) (LME)	18,856.00	-1.00%	3.59%	1.26%	9.77%
▼ Plomo (US\$ TM) (LME)	1,931.50	0.68%	4.10%	11.15%	0.94%
▲ Azúcar #11 (US\$ Libra) (NYB-ICE)	15.45	0.91%	6.63%	4.96%	7.44%
▲ Cacao (US\$ TM) (NYB-ICE)	2,580.00	2.50%	8.68%	6.61%	6.09%
▲ Café Arábica (US\$ TM) (NYB-ICE)	122.85	2.80%	9.74%	12.76%	-12.28%

*Legend: Variación 1D: 1 Día; 5D: 5 Días; 1M: 1 Mes; YTD: Var.% 31/12/19 a la fecha



Base: 19/08/20=100
Source: Bloomberg

Equity

Germany (Stocks from DAX Index)

Largest gains	Curr.	Price	▲%	Exchange	Largest losses	Curr.	Price	▼%	Exchange
VNA GY	EUR	57.18	2.51	Xetra	MTX GY	EUR	201.3	-1.95	Xetra
DB1 GY	EUR	136.75	2.40	Xetra	MRK GY	EUR	128.5	-1.95	Xetra
ADS GY	EUR	284.2	2.38	Xetra	RWE GY	EUR	33.72	-0.68	Xetra
DAI GY	EUR	55.7	2.13	Xetra	FME GY	EUR	71.22	-0.59	Xetra

Europe (Stocks from STOXX EUROPE 600)

Largest gains	Curr.	Price	▲%	Exchange	Largest losses	Curr.	Price	▼%	Exchange
RF FP	EUR	53.35	5.54	EN Paris	HL/LN	GBB	1526	-5.54	Londres
ALO FP	EUR	43.26	4.85	EN Paris	TRYG DC	DKK	176.5	-5.06	Copenhagen
RNO FP	EUR	31.37	4.71	EN Paris	DOC LN	GBB	5582	-5.04	Londres
SOP FP	EUR	124.8	4.70	EN Paris	HSV LN	GBB	1204	-4.97	Londres

Global Overview:

United States:

US markets ended trading with losses, when concerns about the evolution of the pandemic and the reimposition of restrictive measures overcame the feeling of hope for the vaccine. A selloff at the end of the session drove the markets lower, despite favorable preliminary results from 2 vaccines recently. Tim Ghriskey of Inverness Capital commented "It's a confusing market because portfolio managers don't know what time frame to focus on." In detail, he explained that this confusion comes from the "trade-off between the short term from the six to nine months of continuous spread of the virus and the period after that when everyone is vaccinated and the virus is eradicated." Continued growth in confirmed cases and containment measures around the world also weighed on the markets. On the corporate front, the quarterly earnings reporting period is about to end. Of the 468 S&P 500 companies that have reported, 84.4% have had a positive surprise, according to Reuters. In this way, the S&P 500 -1.16%, DJIA -1.16% and NASDAQ -0.82% ended in negative territory.

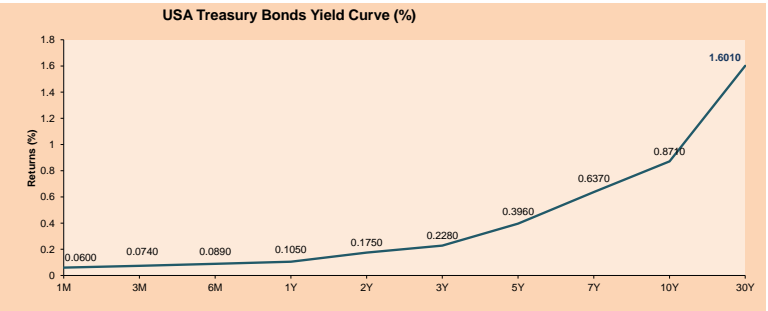
Europe:

European markets closed today's session with positive returns as new advances in a Covid-19 vaccine offset concerns of a rapid spread of the virus in the region. The advance was shown by the side of the Pfizer + 0.78% vaccine, whose vaccine had a 95% success rate in its experimental phase. However, the market response was not as high as investors believed that launching it would take time, and, in the meantime, greater US and European restrictions without new stimulus would threaten to affect economic activity. Thus, the number of daily deaths reported worldwide by the new coronavirus was at the highest level in history to this day, with the UK having the highest number of deaths in Europe, according to a Reuters count. Despite this, news of mergers and acquisitions drove large swings in stocks, with UK company RSA insurance + 4.17% higher, after backing a E 7.2 billion (\$ 9.55 billion) cash offering from Intact Financial + 0.64% and Trigg -5.06% in one of the largest financial acquisitions in Europe this year. Thus, the main indexes Stoxx 600 + 0.44%, FTSE 100 + 0.31%, CAC 40 + 0.52% and DAX + 0.52% closed higher.

Asia:

Asian markets closed today's session with mixed returns, amid hopes of additional stimulus from the US Federal Reserve and reassuring announcements from both the Central Bank of Australia and the Chinese government. However, the feeling of the market was hit by reports of Tokyo's new daily infections record of 493 and 313 in South Korea. In addition, it was reported that Japan plans to raise its COVID-19 alert level to the highest of four levels and other countries of the continent, support its social distancing rules. On the other hand, Australia stocks reached a nearly nine-month high, driven by the financial sector after the country's central bank ensured that rising house prices were not a cause of concern as demand is still weak against slow population growth this year. In turn, gains in Chinese stock exchange were boosted by Prime Minister Li Keqiang's announcement, which calmed investors' concerns that they might soon abandon macroeconomic policy stimulus plans. Thus, Nikkei 225 -1.10%, Hang Seng + 0.49%, S & P / ASX 200 + 0.51%, Kospi + 0.26%, Shanghai Composite + 0.22% and Shenzhen Composite -0.34% closed with results mostly higher.

ETFs	Curr.	Close	1D	5D	30 D	YTD	Exchange
SPDR S&P 500 ETF TRUST	USD	356.28	-1.20%	-0.11%	4.17%	10.69%	NYSE Arca
ISHARES MSCI EMERGING MARKET	USD	48.71	-0.35%	1.44%	7.22%	8.56%	NYSE Arca
ISHARES IBOXX HIGH YLD CORP	USD	85.79	-0.19%	0.07%	1.73%	-2.44%	NYSE Arca
FINANCIAL SELECT SECTOR SPDR	USD	27.33	-0.94%	1.07%	11.05%	-11.21%	NYSE Arca
VANECK GOLD MINERS	USD	35.82	-3.03%	-3.58%	-6.53%	22.34%	NYSE Arca
ISHARES RUSSELL 2000 ETF	USD	175.96	-1.40%	1.93%	9.69%	6.21%	NYSE Arca
SPDR GOLD SHARES	USD	175.49	-0.57%	0.34%	-1.63%	22.81%	NYSE Arca
ISHARES 20+ YEAR TREASURY BO	USD	159.27	0.29%	2.28%	-0.94%	17.56%	NASDAQ GM
INVESCO QQQ TRUST SERIES 1	USD	290.11	-0.74%	0.12%	2.22%	36.45%	NASDAQ GM
ISHARES NASDAQ BIOTECHNOLOGY	USD	137.92	-2.02%	-1.14%	0.36%	14.45%	NASDAQ GM
ENERGY SELECT SECTOR SPDR	USD	35.42	-2.91%	4.85%	19.89%	-41.01%	NYSE Arca
PROSHARES ULTRA VIX ST FUTUR	USD	12.88	5.14%	-1.38%	-28.17%	-0.08%	NYSE Arca
UNITED STATES OIL FUND LP	USD	29.00	0.45%	-0.14%	1.43%	-71.70%	NYSE Arca
ISHARES MSCI BRAZIL ETF	USD	32.37	-1.88%	1.89%	12.08%	-31.78%	NYSE Arca
SPDR S&P OIL & GAS EXP & PR	USD	51.33	-2.15%	6.32%	20.30%	-45.85%	NYSE Arca
UTILITIES SELECT SECTOR SPDR	USD	64.17	-1.96%	-3.52%	1.12%	-0.70%	NYSE Arca
ISHARES US REAL ESTATE ETF	USD	85.15	-1.80%	0.45%	5.99%	-8.52%	NYSE Arca
SPDR S&P BIOTECH ETF	USD	124.34	-1.89%	0.55%	5.11%	30.73%	NYSE Arca
ISHARES IBOXX INVESTMENT GRA	USD	138.93	0.21%	1.38%	1.37%	7.01%	NYSE Arca
ISHARES JP MORGAN USD EMERGI	USD	113.78	-0.09%	0.15%	2.06%	-0.68%	NASDAQ GM
REAL ESTATE SELECT SECT SPDR	USD	37.13	-1.69%	0.22%	4.47%	-3.98%	NYSE Arca
ISHARES CHINA LARGE-CAP ETF	USD	47.15	-0.44%	-0.95%	6.94%	8.07%	NYSE Arca
CONSUMER STAPLES SPDR	USD	66.74	-1.37%	-0.07%	2.19%	5.97%	NYSE Arca
VANECK JR GOLD MINER	USD	51.63	-2.70%	-2.38%	-9.01%	22.17%	NYSE Arca
SPDR BBG BARC HIGH YIELD BND	USD	106.89	-0.22%	0.18%	1.90%	-2.42%	NYSE Arca
VANGUARD REAL ESTATE ETF	USD	84.74	-1.94%	0.57%	6.51%	-8.68%	NYSE Arca
GRAYSACLE BITCOIN TRUST BTC	USD	19.64	-2.58%	12.07%	53.08%	139.80%	OTC US



Source: Bloomberg

Capital Market Laboratory Coordinator: Economist Bruno Bellido
Collaboration: Piero Best, Luis Davila, Laura Delgado and Alonso Hernandez
email: pulsobursatil@ulima.edu.pe
facebook: www.facebook.com/pulsobursatil

LIMA

Stocks

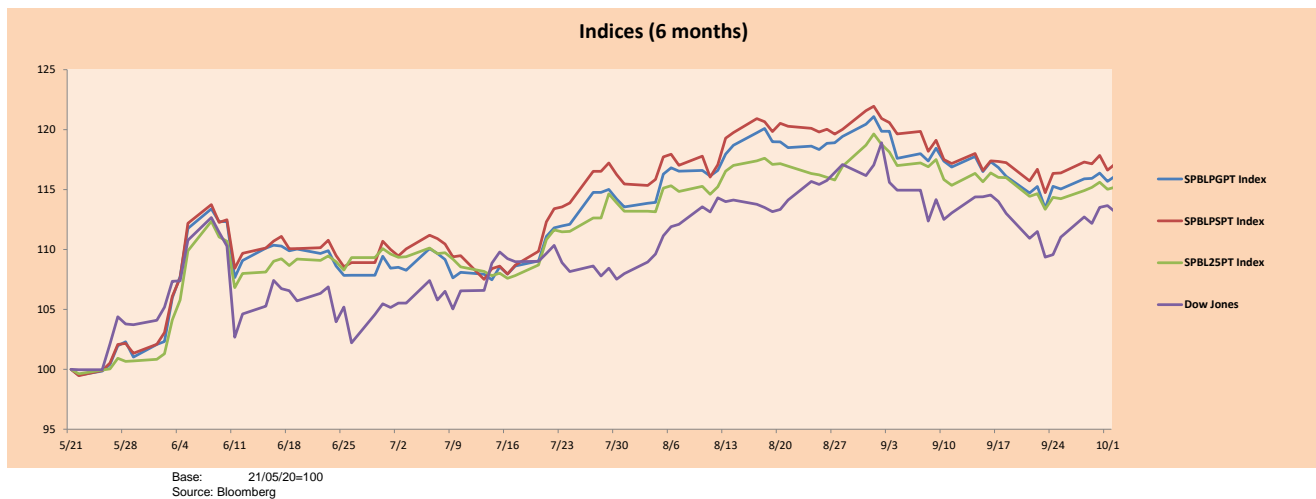
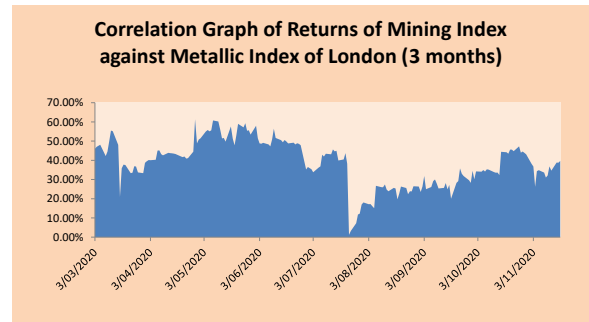
Ticker	Currency	Price	1D*	5D*	30D*	YTD*	Frequency	Volume (US\$)	Beta	Dividend Yield (%)	Price Earning	Market Cap. (M US\$)	Economic Sector*	Index Weight
▲ ALICORC1 PE**	S/.	7.15	0.24%	0.92%	4.51%	-6.08%	100.00%	1,129,045	0.75	3.50	16.44	1,707.79	Industrial	3.53%
▲ ATACOCB1 PE**	S/.	0.12	0.00%	0.00%	-3.13%	-24.85%	40.00%	2,859	1.05	0.00	-	32.79	Mining	1.02%
▲ BACKUSI1 PE**	S/.	19.60	0.51%	0.51%	15.29%	-31.23%	95.00%	8,609	0.52	3.34	5.78	8,353.90	Industrial	0.82%
▲ BAP PE**	US\$	135.50	1.93%	13.72%	12.64%	-36.29%	100.00%	1,108,915	1.54	6.50	-	12,788.80	Diverse	5.82%
▼ BVN PE**	US\$	11.50	-0.95%	-3.12%	-6.50%	-24.84%	100.00%	127,843	1.47	0.23	-	3,169.80	Mining	5.88%
▲ CASAGRC1 PE**	S/.	5.20	2.36%	18.45%	23.81%	71.62%	90.00%	33,895	0.55	2.06	9.34	122.59	Agricultural	1.31%
▲ BBVAC1 PE**	S/.	2.14	0.47%	-4.89%	0.19%	-30.79%	95.00%	2,286,375	0.70	4.03	11.14	3,910.67	Finance	2.85%
▲ CORAREI1 PE**	S/.	0.90	4.65%	13.92%	21.62%	-1.10%	95.00%	11,670	0.71	8.09	6.40	327.41	Industrial	1.72%
▲ CPACASC1 PE**	S/.	6.00	4.35%	8.50%	11.11%	-2.44%	95.00%	188,900	0.61	6.00	19.35	717.38	Industrial	2.38%
▲ CVERDEC1 PE**	US\$	18.60	0.54%	-1.59%	1.92%	-3.63%	100.00%	140,549	0.74	0.00	44.90	6,511.04	Mining	5.25%
▲ ENGEPEC1 PE**	S/.	1.96	0.51%	-2.00%	-2.00%	-14.78%	60.00%	21,654	0.50	12.87	9.85	1,557.27	Public Services	1.44%
- ENDISPC1**	S/.	5.05	0.00%	-0.98%	1.00%	-31.29%	55.00%	136,942	0.46	0.00	9.53	902.56	Public Services	0.98%
▲ FERREYC1 PE**	S/.	1.75	2.34%	2.34%	4.79%	-20.09%	100.00%	207,216	0.72	4.38	35.13	477.89	Diverse	4.90%
- AENZAC1 PE**	S/.	1.58	0.00%	3.95%	12.86%	-7.06%	90.00%	13,267	0.74	0.00	-	385.58	Diverse	4.05%
▲ IFS PE**	US\$	25.60	2.40%	22.84%	8.25%	-37.41%	100.00%	67,415	1.27	6.84	24.22	2,955.46	Diverse	7.22%
▼ INRETC1 PE**	US\$	34.00	-0.58%	2.87%	12.21%	-5.56%	95.00%	1,618,480	0.62	1.66	27.23	3,495.45	Diverse	5.28%
▲ LUSURC1 PE**	S/.	26.00	0.04%	-0.04%	-3.74%	0.97%	85.00%	126,518	0.51	2.50	22.05	3,543.55	Public Services	1.81%
▲ MINSUR1 PE**	S/.	1.67	1.21%	0.00%	0.00%	7.05%	65.00%	7,539	0.74	0.00	-	1,347.54	Mining	3.09%
▲ PML PE**	US\$	0.09	2.27%	0.00%	5.88%	60.71%	55.00%	14,242	1.27	0.00	-	23.77	Mining	2.12%
▲ RELAPAC1 PE**	S/.	0.07	1.47%	6.15%	4.55%	-43.90%	55.00%	21,840	0.73	0.00	-	160.66	Industrial	2.12%
- SCCO PE**	US\$	56.06	0.00%	4.30%	16.38%	32.12%	90.00%	897	0.83	0.00	32.66	43,338.49	Mining	2.14%
▲ SIDERC1 PE**	S/.	0.80	5.26%	5.26%	21.21%	-10.11%	100.00%	41,208	0.87	42.78	9.51	274.94	Industrial	1.43%
▲ TV PE**	US\$	0.16	22.05%	29.17%	49.04%	-10.40%	85.00%	268,395	1.46	0.00	-	124.40	Mining	2.93%
▲ UNACEMC1 PE**	S/.	1.50	6.38%	11.11%	7.14%	-25.00%	95.00%	28,382	0.85	1.73	72.99	763.30	Industrial	3.00%
▲ VOLCABC1 PE**	S/.	0.40	6.18%	3.95%	3.95%	-11.24%	100.00%	447,511	0.82	0.00	-	1,778.76	Mining	5.90%
- NEXAPEC1 PE**	S/.	2.60	0.00%	1.17%	0.00%	-24.64%	50.00%	13,782	1.00	0.00	-	962.29	Mining	1.56%

Quantity of shares: 26
Source: Bloomberg, Economática
* Bloomberg Industry Classification System
** PER is used in the stock market and original currency of the instrument
*Legend: Variation 1D: 1 Day; 5D: 5 Days; 1M: 1 Month; YTD: Var.% 12/31/18 to date

Sectorial Indices

	Close	1D*	5D*	30D*	YTD*	Beta
▼ Mining Index	340.60	-0.60%	0.36%	6.75%	11.80%	1.00
▲ Consumer Index	1,014.47	0.40%	1.88%	4.96%	-11.03%	0.40
▲ Industrial Index	186.69	3.16%	7.31%	10.45%	-11.57%	0.59
▲ Banking and Financial Index	865.51	1.10%	12.06%	11.09%	-26.63%	1.58
▲ Construction Index	202.73	3.50%	7.41%	10.85%	-10.55%	0.57
▲ Services Index	608.85	0.51%	0.02%	-1.75%	-6.55%	0.08
▲ Electric Index	594.39	0.51%	0.02%	-1.75%	-6.55%	0.08

*Legend: Variation 1D: 1 Day; 5D: 5 Days; 1M: 1 Month; YTD: Var.% 12/31/19 to date



Capital Market Laboratory Coordinator: Economist Bruno Bellido
Collaboration: Piero Best, Luis Davila, Laura Delgado and Alonso Hernández
email: pulsohorsatil@ulima.edu.pe
facebook: www.facebook.com/pulsohorsatil.ul

The content of this document is just for informational purposes. The information and opinions expressed should not be consider as recommendations for future decisions. Under any circumstances, the Capital Market Laboratory of University of Lima will be responsible for the use of the statements in this document.

SOVEREIGN RATING

RISK RATINGS

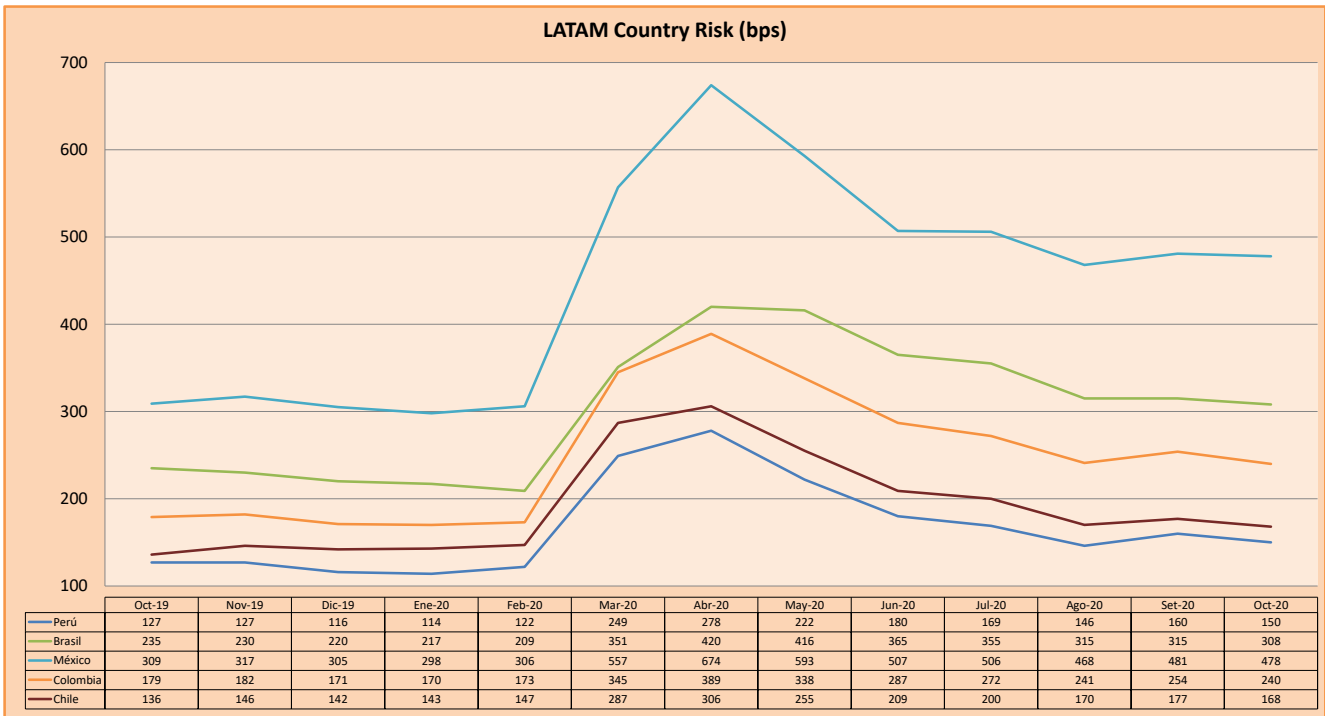
Moody's	S&P	Fitch	
Aaa	AAA	AAA	Prime
Aa1	AA+	AA+	High credit quality
Aa2	AA	AA	
Aa3	AA-	AA-	
A1	A+	A+	Medium-high grade, with low credit risk
A2	A	A	
A3	A-	A-	
Baa1	BBB+	BBB+	Moderate Credit Risk
Baa2	BBB	BBB	
Baa3	BBB-	BBB-	
Ba1	BB+	BB+	It has speculative elements and it is subject to substantial credit risk
Ba2	BB	BB	
Ba3	BB-	BB-	
B1	B+	B+	It is considered speculative and it has high credit risk
B2	B	B	
B3	B-	B-	
Caa1	CCC+		Bad credit conditions and it is subject to high credit risk
Caa2	CCC		
Caa3	CCC-	CCC	
Ca	C		Very close to default or in default
		DDD	
C	D	DD D	

Source: Bloomberg

Latin America Credit Rating			
Clasificadora de riesgo			
Country	Moody's	Fitch	S&P
Peru	A3	BBB+	BBB+
México	Ba2	BB-	BB-
Venezuela	C	WD	SD
Brazil	Ba2	BB-	BB-
Colombia	Baa2	BBB-	BBB-
Chile	A1	A-	A+
Argentine	Ca	WD	CCC+
Panama	Baa1	BBB	BBB+

Source: Bloomberg

LATAM Country Risk (bps)



Source: BCRP

Capital Market Laboratory Coordinator: Economist Bruno Bellido
Collaboration: Piero Best, Luis Davila, Laura Delgado and Alonso Hernández
email: pulsobursatil@ulima.edu.pe
facebook: www.facebook.com/pulsobursatil.ul