

PULSO BURSÁTIL

FACULTAD DE CIENCIAS EMPRESARIALES Y ECONÓMICAS
CARRERA DE ECONOMÍA
LABORATORIO DE MERCADO DE CAPITALES

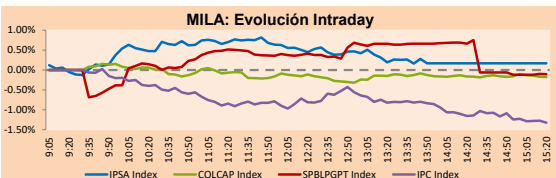


MILA

Lima, november 27, 2020

Main Indexes	Close	1 D	5 D	1 M	YTD	Cap. Burs. (US\$ bill)
▼ IPSA (Chile)	4,117.03	-0.12%	1.54%	16.30%	-11.84%	104.77
▼ IGPA (Chile)	20,593.35	-0.06%	1.63%	14.93%	-11.97%	128.96
▲ COLSC (Colombia)	967.11	0.72%	3.35%	10.22%	-1.12%	5.32
▼ COLCAP (Colombia)	1,261.74	-0.10%	1.77%	11.00%	-24.10%	75.24
▼ S&P/BVL (Perú)*	19,601.09	-0.05%	4.20%	12.18%	-4.51%	99.93
▲ S&P/BVL SEL (Perú)	523.52	0.92%	4.65%	12.30%	-1.49%	83.01
▼ S&P/BVL LIMA 25	23,983.69	-0.09%	1.90%	10.86%	-6.87%	99.08
▼ IPC (México)	41,674.30	-0.18%	2.21%	12.67%	-4.29%	264.93
▲ S&P MILA 40	477.44	1.37%	6.58%	16.80%	-20.83%	218.85

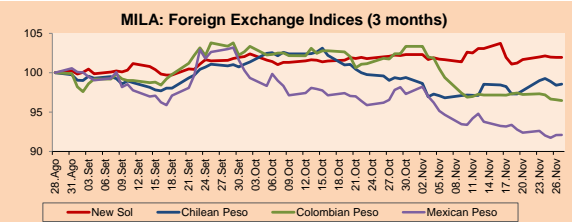
*Legend: Variation 1D: 1 day; 5D: 5 days; 1M: 1 Month; YTD: Var% 12/31/19 to date



Source: Bloomberg

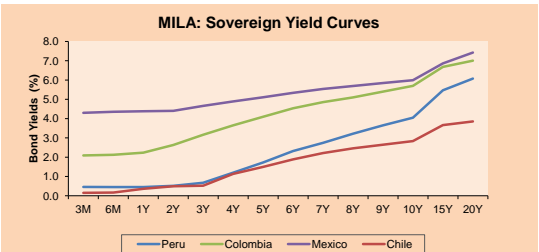
Currency	Price	1D*	5D*	30 D*	YTD*
▼ New Sol (PEN)	3,603.00	0.00%	0.21%	-0.27%	8.78%
▲ Chilean Peso (CLP)	767.39	0.14%	0.85%	-0.82%	2.08%
▼ Colombian Peso (COP)	3,613.02	-0.11%	-0.79%	-5.80%	10.25%
▲ Mexican Peso (MXN)	20.04	0.02%	-0.30%	-5.85%	5.90%

*Legend: Variation 1D: 1 day; 5D: 5 days; 1M: 1 Month; YTD: Var% 12/31/19 to date



Base: 28/08/20=100
Source: Bloomberg

Fixed Income	Currency	Price	Bid Yield (%)	Ask Yield (%)	Duration
PERU 7.35 07/21/25	USD	127.804	1.23	1.11	4.00
PERU 4.125 08/25/27	USD	116.537	1.56	1.51	5.95
PERU 8.75 11/21/33	USD	167.172	2.66	2.57	9.15
PERU 6.55 03/14/37	USD	149.38	2.81	2.72	10.84
PERU 5.625 11/18/2050	USD	154.221	2.92	2.89	17.76
CHILE 2.25 10/30/22	USD	103.348	0.61	0.37	1.87
CHILE 3.125 01/21/26	USD	110.551	1.06	0.97	4.75
CHILE 3.625 10/30/42	USD	115.809	2.69	2.64	15.96
COLOM 11.85 03/09/28	USD	165.572	2.19	1.98	5.47
COLOM 10.375 01/28/33	USD	159.265	4.22	4.03	7.97
COLOM 7.375 09/19/37	USD	144.691	3.80	3.72	10.93
COLOM 6.125 01/18/41	USD	133.067	3.79	3.74	12.75
MEX 4 10/02/23	USD	133.067	3.794	3.739	12.75
MEX5.55 01/45	USD	127.919	3.80	3.75	14.57



Source: Bloomberg

Equity

Largest gains	Exchange	Currency	Price	▲ %
CONCHATORO	Chile	CLP	1268.10	3.94
EMPRESAS COPEC	Chile	CLP	6305.00	2.27
CENCOSUD SA	Chile	CLP	1369.00	2.24
CMPC	Chile	CLP	1735.00	1.77
ISA SA	Colombia	COP	22600.00	1.25

Per Turnover	Exchange	Amount (US\$)
WALMART DE MEXIC	Mexico	20,392,457
GRUPO MEXICO-B	Mexico	18,215,030
GRUPO F BANORT-O	Mexico	16,513,633
SOQUIMICH-B	Chile	15,762,780
AMERICA MOVIL-L	Mexico	15,697,366

Largest losses	Exchange	Currency	Price	▼ %
FOMENTO ECON-UBC	Mexico	MXN	145.35	-4.26
COCA-COLA FEMSA	Mexico	MXN	88.24	-3.87
COLBUN SA	Chile	CLP	125.51	-3.82
GRUPO AEROPORTU	Mexico	MXN	118.13	-3.80
AERO DEL PACIF-B	Mexico	MXN	203.15	-3.54

Per Volume	Exchange	Volume
ITAU CORPBANCA	Chile	247,667,011
BANCO DE CHILE	Chile	95,743,236
BANCO SANTANDER	Chile	83,178,518
ENEL AMERICAS SA	Chile	68,403,552
AGUAS ANDINAS-A	Chile	38,931,564

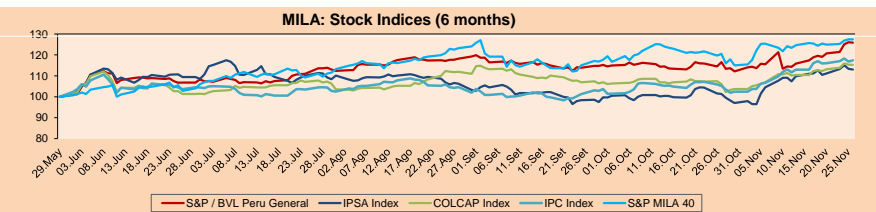
MILA

Peru: The General Index of the BVL ended today's session with a negative result of -0.05%. The index maintains an annual accumulated negative trend of -4.51% in local currency, while the adjusted return in dollars amounts to -12.21%. Then, the S&P / BVL Peru SEL varied by +0.92% while the S&P / BVL LIMA 25 by -0.09%. The PEN spot reached 5 / 3.6030. Headline: MEF: Pandemic, drought and disinterest hit farmers in Peru

Chile: The IPSA index ended the day with a negative return of -0.12%. The sectors most affected in the day were Communication Services (-2.01%) and Public Services (-1.98%). The worst performing stocks were Colbun SA (-3.82%) and Energía Chile SA (-3.04%). Headline: Unemployment in Chile falls to 11.6% in the moving quarter to October

Colombia: The COLCAP index ended the day with a negative return of -0.10%. The sectors most affected during the session were Energy (-1.66%) and Materials (-0.58%). The worst performing stocks were Banco Davivienda SA (-2.34%) and Inversiones Argos SA (-1.95%). Ecuador and Colombia work on the gradual reopening of the border

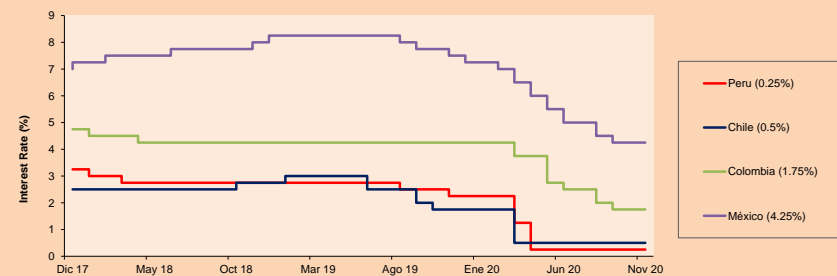
Mexico: The IPC index closed the day with a negative return of -1.74%. The sectors most affected in the day were Industrial (-2.45%) and Basic Products (-2.29%). The worst performing stocks were Fomento Economico Mexicano SAB (-4.26%) and Coca-Cola Femsa SAB de CV (-3.87%). Headline: Mexico extends tax advantages in borders with the US and will replicate them at the southern border



Base: 01/06/20=100
Source: Bloomberg

ETFs	Curr.	Close	1D	5D	30 D	YTD	Exchange
▲ iShares MSCI All Peru Caped Index Fund	USD	33.55	1.37%	5.40%	14.07%	-9.45%	NYSE Arca
▲ iShares MSCI All Chile Caped Index Fund	USD	27.82	-0.68%	1.68%	15.72%	-16.53%	Cboe BZX
▼ Global X MSCI Colombia	USD	9.6724	-0.64%	2.03%	19.12%	-30.41%	NYSE Arca
▲ iShares MSCI Mexico Capped	USD	41.4	-0.38%	1.12%	20.70%	-8.06%	NYSE Arca
▲ iShares MSCI Emerging Markets	USD	50.04	0.95%	2.00%	11.77%	-11.52%	NYSE Arca
▲ Vanguard FTSE Emerging Markets	USD	48.76	0.93%	1.80%	11.30%	9.65%	NYSE Arca
▲ iShares Core MSCI Emerging Markets	USD	60.1	0.96%	2.21%	12.04%	11.79%	NYSE Arca
▲ iShares JP Morgan Emerging Markets Bonds	USD	60.06	0.65%	0.74%	8.55%	2.39%	Cboe BZX
- Morgan Stanley Emerging Markets Domestic	USD	6.09	0.00%	0.50%	9.53%	-12.88%	New York

MILA: Policy Rate



Source: Bloomberg

Capital Market Laboratory Coordinator: Economist Bruno Bellido
Collaboration: Piero Best, Luis Davila, Laura Delgado and Alonso Hernández
email: pulsobursatil@ulima.edu.pe
facebook: www.facebook.com/pulsobursatil.ul

WORLD

Main Indices	Close	1 D*	5 D*	1 M*	YTD*	Market Cap. (US\$ Mill.)
▲ Dow Jones (USA)	29,910.37	0.13%	1.45%	12.86%	4.81%	9,153,924
▲ Standard & Poor's 500 (EEUU)	3,638.35	0.24%	1.58%	11.27%	12.62%	31,486,913
▲ NASDAQ Composite (USA)	12,205.85	0.92%	2.53%	11.86%	36.03%	19,752,290
▲ Stoxx EUROPE 600 (Europe)	393.23	0.41%	0.93%	14.86%	-5.44%	8,995,306
▲ DAX (Germany)	13,335.68	0.37%	1.51%	15.40%	0.65%	1,016,822
▲ FTSE 100 (United Kingdom)	6,367.58	0.07%	0.25%	14.17%	-15.58%	1,317,216
▲ CAC 40 (France)	5,598.18	0.56%	1.88%	21.85%	-6.35%	1,496,332
▲ IBEX 35 (Spain)	8,190.70	1.06%	2.67%	26.94%	-14.23%	447,025
▲ MSCI AC Asia Pacific Index	193.10	0.33%	2.23%	12.44%	13.15%	24,258,254
▲ HANG SENG (Hong Kong)	26,894.68	0.28%	1.68%	11.56%	-4.59%	3,787,697
▲ SHANGHAI SEC Comp. (China)	3,408.31	1.15%	0.91%	5.70%	11.74%	6,297,762
▲ NIKKEI 225 (Japan)	26,644.71	0.40%	3.94%	15.96%	12.63%	3,827,244
▲ S&P / ASX 200 (Australia)	6,601.05	-0.53%	0.95%	11.36%	-1.24%	1,537,030
▲ KOSPI (South Korea)	2,633.45	-1.74%	-0.55%	16.16%	19.83%	1,573,904

*Legend: Variation 1D: 1 Day; 5D: 5 Days; 1M: 1 Month; YTD: Var.% 12/31/19 to date

Equity

Germany (Stocks from DAX Index)

Largest gains	Curr.	Price	▲%	Exchange	Largest losses	Curr.	Price	▼%	Exchange
1COV GY	EUR	47.45	2.31	Xetra	BMW GY	EUR	73.09	-1.40	Xetra
RWE GY	EUR	34.87	1.84	Xetra	ADS GY	EUR	271.2	-1.27	Xetra
MRK GY	EUR	133.4	1.52	Xetra	MUV2 GY	EUR	235.8	-1.01	Xetra
BAS GY	EUR	60.92	1.42	Xetra	HEI GY	EUR	60.5	-0.79	Xetra

Europe (Stocks from STOXX EUROPE 600)

Largest gains	Curr.	Price	▲%	Exchange	Largest losses	Curr.	Price	▼%	Exchange
VIFN SE	CHF	132.35	8.17	SIX Swiss Ex	ICAD FP	EUR	59.9	-7.28	EN Paris
EVO SS	SEK	690.2	6.35	Stockholm	COV FP	EUR	72	-3.42	EN Paris
HFG GY	EUR	50.6	5.95	Xetra	TRN LN	GBp	454.2	-3.11	Londres
DLG GY	EUR	45.9	5.78	Xetra	EMG LN	GBp	116.5	-2.71	Londres

Global Overview:

United States:

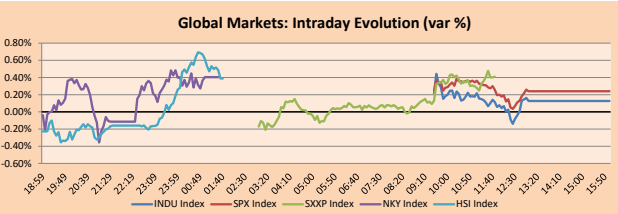
US markets closed today's session with positive results as hopes for a peaceful transition to the Biden administration outweighed concerns about rising COVID-19 cases. President Donald Trump said on Thursday that he would hand over power when the Electoral College certifies President-elect Joe Biden as the winner of the 2020 election. Investors, in turn, were keeping an eye out for early reports of the buying activity of Black Friday to assess whether the high volume of Covid-19 cases and the slowdown in the economic recovery will affect the sales of the Christmas season. Also, it is feared that weaker data on consumer spending and income could create obstacles to an economic recovery. On the other hand, gold plunged -2.3% to \$ 1,774.42 an ounce, its lowest level since June, while oil futures traded mixed. West Texas Intermediate crude fell -2.5% to \$ 44.55 a barrel while Brent crude, the international benchmark for oil, rose +1.3% to \$ 48.44 per barrel. Thus, the DJIA +0.13%, S&P 500 +0.24% and Nasdaq +0.92% closed higher.

Europe:

European markets closed today's session with positive returns for the fourth consecutive week as investors look to a faster economic recovery next year. The pan-European index closed higher and added 0.93% during the week, with the technology sector and banking sector leading the gains, while energy stocks were the main winners of the week due to the increase in the prices of the Petroleum. Within banking stocks, BBVA advanced +4.99% and was among the main winners of the benchmark index. Banco Sabadell shares, on the other hand, fell -13.58%, as the failure of the BBVA-Sabadell merger is expected to add pressure on the latter's lender, which was the weakest link in the possible transaction. On the other hand, the number of infections in Germany surpassed the million mark and the daily death toll reached a record high, while lawmakers announced plans to almost double loans for next year to combat the pandemic. In this way, the main indexes Stoxx 600 +0.41%, FTSE 100 +0.07%, CAC 40 +0.56% and DAX +0.37% closed higher.

Asia:

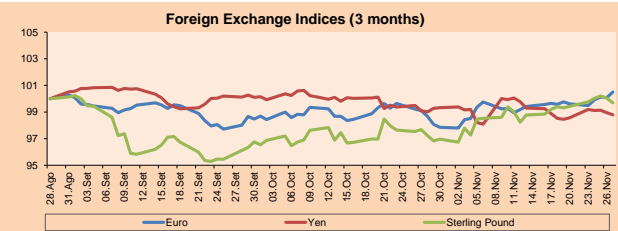
Asian markets closed today's session with mostly positive returns following the strength of China, as optimistic earnings from industrial companies pointed to a continued recovery in its economy. October earnings in Chinese industrial companies increased +28.2% YoY and point to a consistent recovery in the manufacturing sector. Along the same line, Japan's Nikkei stock index closed at its highest level since April 1991, driven by strong corporate earnings from electronic parts manufacturers who expect higher demand for electric vehicles, 5G communications and other new technologies. On the other hand, Australian stocks posted losses, mainly reacting to the questioning of several scientists about the efficacy of the COVID-19 vaccine from drug manufacturer AstraZeneca; however, in a monthly analysis, the Australian stock market is on its way to closing its best month in history with an increase of +25%. Regarding individual stocks, Treasury Wine Estates Ltd. plunged more than -14% after China announced that it will impose anti-dumping duties and that Treasury Wine will have to pay the highest deposit of all wine importers. Thus, the main Nikkei 225 +0.40%, Hang Seng +0.28%, ASX 200 -0.53%, CSI 300 +1.24% and Shanghai Composite +1.14% indices closed mostly higher.



Source: Bloomberg

Currency	Price	1 D*	5 D*	1 M*	YTD*
▲ Euro	1.1963	0.42%	0.89%	1.85%	6.69%
▲ Yen	104.0900	-0.16%	0.22%	-0.22%	-4.16%
▼ Sterling Pound	1.3311	-0.35%	0.27%	2.53%	0.41%
▲ Yuan	6.5781	0.04%	0.23%	-2.24%	-5.53%
▼ Hong Kong Dollar	7.7506	0.00%	-0.02%	0.01%	-0.52%
▲ Brazilian Real	5.3373	0.10%	-0.96%	-7.16%	32.43%
▲ Argentine Peso	81.0628	0.21%	0.88%	3.52%	35.39%

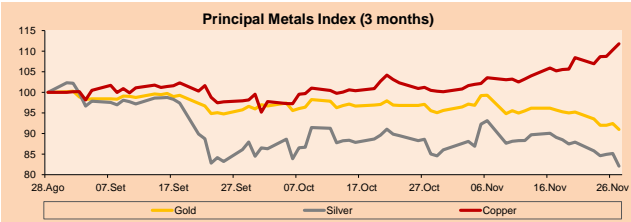
*Legend: Variation 1D: 1 Day; 5D: 5 Days; 1M: 1 Month; YTD: Var.% 12/31/19 to date



Base: 28/08/20=100
Source: Bloomberg

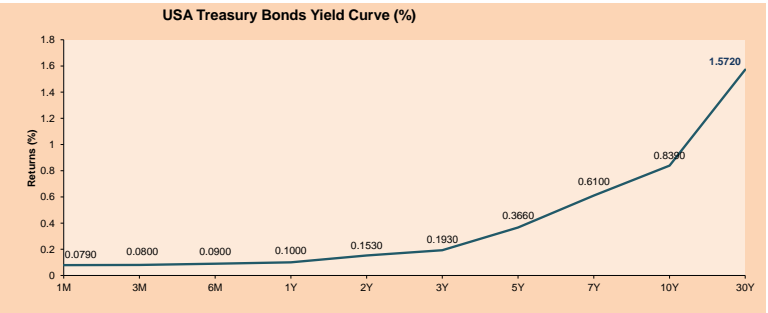
Commodities	Close	1 D*	5 D*	1 M*	YTD*
▼ Oro (US\$ Oz. T) (LME)	1,787.79	-1.54%	-4.45%	-4.76%	17.83%
▼ Plata (US\$ Oz. T) (LME)	22.57	-3.61%	-6.63%	-3.47%	25.45%
▲ Cobalt (US\$ TM) (LME)	7,487.50	1.36%	3.10%	11.26%	21.77%
▲ Zinc (US\$ TM) (LME)	2,776.00	1.20%	-0.99%	10.17%	21.78%
▼ Petróleo WTI (US\$ Barril) (NYM)	45.53	-0.39%	7.33%	20.71%	-18.74%
▲ Estano (US\$ TM) (LME)	18,926.00	0.46%	0.50%	5.53%	10.18%
▲ Plomo (US\$ TM) (LME)	2,089.45	3.28%	4.43%	17.09%	9.20%
▲ Azúcar #11 (US\$ Libra) (NYB-ICE)	14.82	0.34%	-2.56%	-0.47%	3.06%
▲ Cacao (US\$ TM) (NYB-ICE)	2,766.00	1.54%	1.99%	16.32%	13.73%
▲ Café Arábica (US\$ TM) (NYB-ICE)	124.20	6.02%	5.21%	15.32%	-11.32%

*Legend: Variación 1D: 1 Día; 5D: 5 Días; 1M: 1 Mes; YTD: Var.% 31/12/19 a la fecha



Base: 28/08/20=100
Source: Bloomberg

ETFs	Curr.	Close	1D	5D	30 D	YTD	Exchange
SPDR S&P 500 ETF TRUST	USD	363.67	0.28%	2.35%	11.33%	12.99%	NYSE Arca
ISHARES MSCI EMERGING MARKET	USD	50.04	0.95%	2.00%	11.77%	11.52%	NYSE Arca
ISHARES IBOXX HIGH YLD CORP	USD	86.41	0.16%	0.57%	3.53%	-1.74%	NYSE Arca
FINANCIAL SELECT SECTOR SPDR	USD	28.47	-0.32%	4.75%	20.58%	-7.50%	NYSE Arca
VANECK GOLD MINERS	USD	34.23	0.56%	-4.85%	-6.27%	16.91%	NYSE Arca
ISHARES RUSSELL 2000 ETF	USD	184.37	0.42%	3.87%	20.28%	11.29%	NYSE Arca
SPDR GOLD SHARES	USD	167.79	-0.91%	-4.50%	-4.74%	17.42%	NYSE Arca
ISHARES 20+ YEAR TREASURY BO	USD	160.22	0.97%	-0.80%	-0.30%	18.26%	NASDAQ GM
INVECO QQQ TRUST SERIES 1	USD	299.01	0.92%	2.97%	10.08%	40.64%	NASDAQ GM
ISHARES NASDAQ BIOTECHNOLOGY	USD	143.22	3.07%	3.13%	8.20%	18.84%	NASDAQ GM
ENERGY SELECT SECTOR SPDR	USD	38.91	-1.17%	8.66%	40.42%	-35.19%	NYSE Arca
PROSHARES ULTRA VIX ST FUTUR	USD	11.44	1.24%	-8.55%	-50.56%	-11.25%	NYSE Arca
UNITED STATES OIL FUND LP	USD	31.22	-0.48%	6.66%	18.65%	-69.54%	NYSE Arca
ISHARES MSCI BRAZIL ETF	USD	34.03	0.50%	5.78%	25.25%	-28.28%	NYSE Arca
SPDR S&P OIL & GAS EXP & PR	USD	57.88	-1.43%	11.18%	45.98%	-38.95%	NYSE Arca
UTILITIES SELECT SECTOR SPDR	USD	63.76	-0.99%	0.35%	1.53%	-1.33%	NYSE Arca
ISHARES US REAL ESTATE ETF	USD	84.90	-0.31%	-0.02%	10.45%	-8.79%	NYSE Arca
SPDR S&P BIOTECH ETF	USD	131.46	3.66%	4.30%	15.11%	38.22%	NYSE Arca
ISHARES IBOXX INVESTMENT GRA	USD	138.00	0.36%	0.31%	2.39%	7.85%	NYSE Arca
ISHARES JP MORGAN USD EMERGI	USD	114.47	0.32%	0.01%	3.80%	-0.08%	NASDAQ GM
REAL ESTATE SELECT SECT SPDR	USD	36.82	-0.19%	-0.32%	8.36%	-4.78%	NYSE Arca
ISHARES CHINA LARGE-CAP ETF	USD	48.62	2.94%	2.49%	10.78%	11.44%	NYSE Arca
CONSUMER STAPLES SPDR	USD	66.92	-0.01%	0.63%	7.07%	6.26%	NYSE Arca
VANECK JR GOLD MINERS	USD	49.61	0.98%	-4.39%	-4.65%	17.39%	NYSE Arca
SPDR BBG BARC HIGH YIELD BND	USD	107.66	0.12%	0.52%	3.71%	-1.72%	NYSE Arca
VANGUARD REAL ESTATE ETF	USD	84.89	-0.45%	0.33%	11.58%	-8.51%	NYSE Arca
GRAYSCALE BITCOIN TRUST BTC	USD	18.84	-9.73%	-11.32%	26.32%	129.98%	OTC US



Source: Bloomberg

LIMA

Stocks

Ticker	Currency	Price	1D*	5D*	30D*	YTD*	Frequency	Volume (US\$)	Beta	Dividend Yield (%)	Price Earning	Market Cap. (M US\$)	Economic Sector*	Index Weight
▲ ALICORC1 PE**	S/.	7.10	0.72%	3.35%	10.22%	-1.12%	100.00%	182,967	0.75	3.52	16.33	1,681.76	Industrial	3.53%
▲ ATACOB1 PE**	S/.	0.15	0.00%	-0.68%	16.00%	-12.12%	50.00%	3,553	1.11	0.00	-	38.02	Mining	1.02%
- BACKUS1 PE**	S/.	19.50	0.00%	-1.52%	5.12%	-31.58%	95.00%	866	0.53	0.00	8.82	8,268.30	Industrial	0.82%
▼ BAP PE**	US\$	150.00	-0.99%	12.78%	29.62%	-29.47%	100.00%	1,721,833	1.56	5.87	-	14,157.35	Diverse	5.82%
▼ BVN PE**	US\$	10.89	-0.46%	-6.36%	-13.37%	-28.82%	100.00%	343,945	1.36	0.24	-	3,001.66	Mining	5.88%
▼ CASAGRC1 PE**	S/.	5.05	-2.88%	-5.08%	4.12%	66.67%	95.00%	9,632	0.51	2.12	9.07	118.06	Agricultural	1.31%
▲ BBVAC1 PE**	S/.	2.26	0.89%	5.12%	10.24%	-26.91%	100.00%	98,910	0.73	3.82	11.76	4,095.45	Finance	2.85%
▲ CORARE1 PE**	S/.	0.88	1.15%	-2.22%	8.64%	-3.30%	100.00%	57,784	0.68	5.38	6.26	323.56	Industrial	1.72%
▼ CPACASC1 PE**	S/.	6.00	-0.66%	-3.23%	10.09%	-2.44%	100.00%	387,818	0.61	6.00	19.35	711.68	Industrial	2.38%
▲ CVERDEC1 PE**	US\$	20.00	2.04%	3.63%	8.11%	3.63%	100.00%	220,859	0.75	0.00	32.51	7,001.12	Mining	5.25%
- ENGEPEC1 PE**	S/.	2.00	0.00%	0.00%	0.00%	-13.04%	55.00%	7,091	0.50	0.00	10.05	1,575.77	Public Services	1.44%
▲ ENDISPC1**	S/.	5.22	2.35%	2.76%	0.38%	-28.98%	65.00%	2,818	0.45	0.39	9.85	925.15	Public Services	0.98%
▲ FERREYC1 PE**	S/.	1.72	1.18%	1.18%	0.58%	-21.46%	100.00%	164,159	0.69	4.46	34.53	465.77	Diverse	4.90%
- AENZAC1 PE**	S/.	1.70	0.00%	7.59%	30.77%	0.00%	100.00%	447,726	0.74	0.00	-	411.40	Diverse	4.05%
▲ IFS PE**	US\$	29.90	2.40%	15.00%	41.04%	-26.89%	100.00%	1,107,933	1.30	5.85	29.78	3,451.89	Diverse	7.22%
▲ INRETC1 PE**	US\$	35.50	0.85%	2.16%	8.90%	-1.39%	100.00%	70,113	0.62	1.59	28.67	3,649.66	Diverse	5.28%
- LUSURC1 PE**	S/.	27.00	0.00%	3.05%	0.00%	4.85%	90.00%	115,745	0.50	2.40	26.50	3,649.09	Public Services	1.81%
- MINSUR1 PE**	S/.	1.70	0.00%	0.59%	1.80%	8.97%	70.00%	28,009	0.74	0.00	-	1,360.28	Mining	3.09%
▲ PML PE**	US\$	0.10	4.35%	6.67%	11.63%	71.43%	65.00%	3,800	1.29	0.00	-	25.35	Mining	2.12%
▼ RELAPAC1 PE**	S/.	0.06	-3.13%	-6.06%	0.00%	-49.59%	80.00%	34,773	0.76	0.00	-	143.16	Industrial	2.12%
▲ SCCO PE**	US\$	60.67	1.12%	6.16%	17.81%	42.99%	90.00%	128,379	0.85	2.47	35.34	46,902.36	Mining	2.14%
▲ SIDERC1 PE**	S/.	0.81	1.25%	1.25%	17.39%	-8.99%	100.00%	10,968	0.88	42.25	9.63	276.05	Industrial	1.43%
- TV PE**	US\$	0.15	0.00%	-7.98%	50.00%	-13.29%	90.00%	4,530	1.58	0.00	-	120.38	Mining	2.93%
▲ UNACEMC1 PE**	S/.	1.48	0.68%	-1.33%	9.63%	-26.00%	100.00%	176,426	0.88	1.76	72.01	746.83	Industrial	3.00%
▼ VOLCABC1 PE**	S/.	0.40	-2.89%	-4.05%	8.92%	-9.44%	100.00%	114,565	0.87	0.00	-	1,769.32	Mining	5.90%
▼ NEXAPEC1 PE**	S/.	2.72	-2.86%	2.26%	13.33%	-21.16%	60.00%	3,986	0.99	0.00	-	997.88	Mining	1.56%

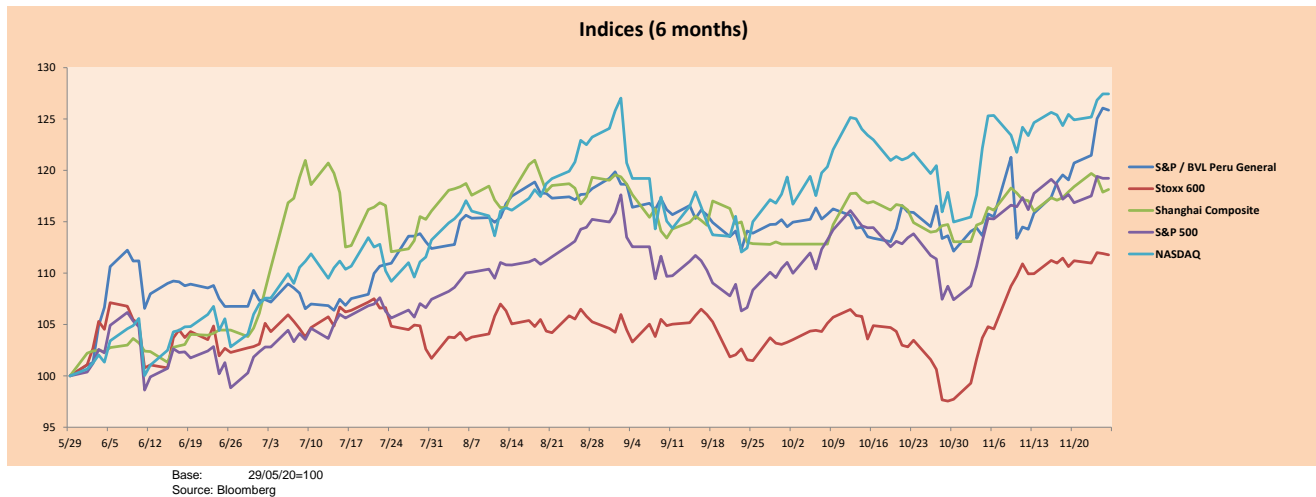
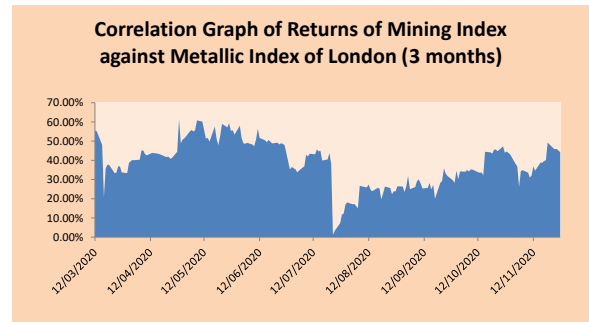
Quantity of shares: 26
 Source: Bloomberg, Económática
 * Bloomberg Industry Classification System
 ** PER is used in the stock market and original currency of the instrument
 *Legend: Variation 1D: 1 Day; 5D: 5 Days; 1M: 1 Month; YTD: Var.% 12/31/19 to date

Sectorial Indices

	Close	1D*	5D*	30D*	YTD*	Beta
▲ S&P/BVLMining	355.28	0.48%	1.74%	6.36%	16.62%	0.99
▼ S&P/BVLConsumer	1,032.54	-0.26%	0.10%	3.48%	-9.44%	0.41
▲ S&P/BVLIndustrials	187.37	0.35%	0.50%	11.50%	-11.25%	0.57
▼ S&P/BVLFinancials	968.33	-0.61%	12.78%	29.18%	-17.91%	1.61
▲ S&P/BVLConstruction	205.39	0.07%	0.32%	14.33%	-9.37%	0.57
▲ S&P/BVLPublicSvcs	623.39	0.25%	1.65%	0.68%	-4.32%	0.08
▲ S&P/BVLElectricUtil	608.58	0.25%	1.65%	0.68%	-4.32%	0.08

S&P/BVLConstructionTRPEN

*Legend: Variation 1D: 1 Day; 5D: 5 Days; 1M: 1 Month; YTD: Var.% 12/31/19 to date



Base: 29/05/20=100
 Source: Bloomberg

Capital Market Laboratory Coordinator: Economist Bruno Bellido
 Collaboration: Piero Best, Luis Davila, Laura Delgado and Alonso Hernández
 email: pulsohorsatil@ulima.edu.pe
 facebook: www.facebook.com/pulsohorsatil.ul

The content of this document is just for informational purposes. The information and opinions expressed should not be considered as recommendations for future decisions. Under any circumstances, the Capital Market Laboratory of University of Lima will be responsible for the use of the statements in this document.

SOVEREIGN RATING

RISK RATINGS

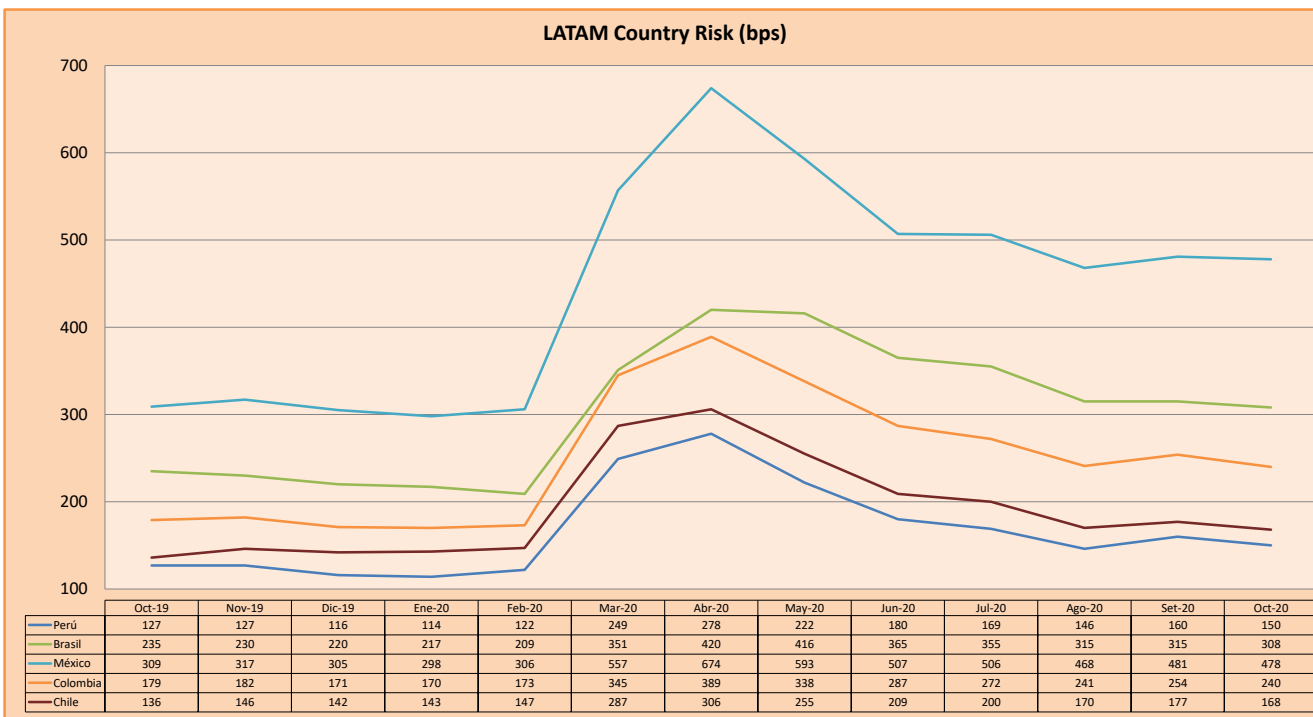
Moody's	S&P	Fitch	
Aaa	AAA	AAA	Prime
Aa1	AA+	AA+	High credit quality
Aa2	AA	AA	
Aa3	AA-	AA-	
A1	A+	A+	Medium-high grade, with low credit risk
A2	A	A	
A3	A-	A-	
Baa1	BBB+	BBB+	Moderate Credit Risk
Baa2	BBB	BBB	
Baa3	BBB-	BBB-	
Ba1	BB+	BB+	It has speculative elements and it is subject to substantial credit risk
Ba2	BB	BB	
Ba3	BB-	BB-	
B1	B+	B+	It is considered speculative and it has high credit risk
B2	B	B	
B3	B-	B-	
Caa1	CCC+		Bad credit conditions and it is subject to high credit risk
Caa2	CCC		
Caa3	CCC-	CCC	
Ca	C		Very close to default or in default
		DDD	
C	D	DD D	

Source: Bloomberg

Latin America Credit Rating			
Clasificadora de riesgo			
Country	Moody's	Fitch	S&P
Peru	A3	BBB+	BBB+
México	Ba2	BB-	BB-
Venezuela	C	WD	SD
Brazil	Ba2	BB-	BB-
Colombia	Baa2	BBB-	BBB-
Chile	A1	A-	A+
Argentine	Ca	WD	CCC+
Panama	Baa1	BBB	BBB

Source: Bloomberg

LATAM Country Risk (bps)



Source: BCRP

Capital Market Laboratory Coordinator: Economist Bruno Bellido
Collaboration: Piero Best, Luis Davila, Laura Delgado and Alonso Hernández
email: pulsobursatil@ulima.edu.pe
facebook: www.facebook.com/pulsobursatil.ul