

# PULSO BURSÁTIL

FACULTAD DE CIENCIAS EMPRESARIALES Y ECONÓMICAS  
CARRERA DE ECONOMÍA  
LABORATORIO DE MERCADO DE CAPITALES

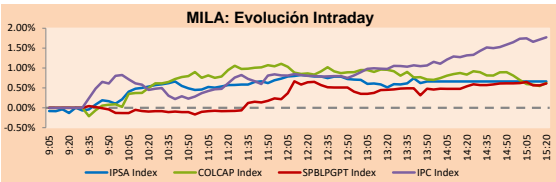


## MILA

Lima, december 2, 2020

Main Indexes	Close	1 D	5 D	1 M	YTD	Cap. Burs. (US\$ bill)
▲ IPSA (Chile)	4,157.12	1.13%	0.53%	17.86%	-11.12%	108.03
▲ IGPA (Chile)	20,769.53	0.98%	0.48%	16.35%	-11.31%	132.62
▲ COLSC (Colombia)	992.33	1.40%	3.69%	12.24%	1.46%	5.59
▲ COLCAP (Colombia)	1,288.49	0.26%	1.97%	11.91%	-22.49%	78.00
▲ S&P/BVL (Perú)*	20,313.85	0.83%	3.42%	13.97%	-1.03%	101.40
▲ S&P/BVL SEL (Perú)	532.89	0.44%	2.45%	13.33%	0.28%	83.40
▲ S&P/BVL LIMA 25	24,451.84	0.27%	1.59%	11.79%	-5.05%	100.52
▲ IPC (México)	43,674.84	1.32%	2.92%	16.57%	0.31%	278.44
▲ S&P MILA 40	493.66	0.28%	3.51%	18.10%	-18.14%	224.74

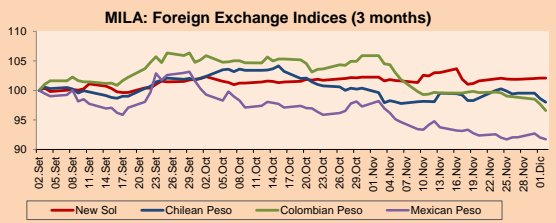
\*Legend: Variation 1D: 1 day; 5D: 5 days; 1M: 1 Month; YTD: Var% 12/31/19 to date



Source: Bloomberg

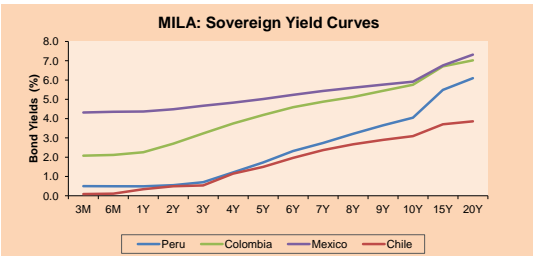
Currency	Price	1D*	5D*	30 D*	YTD*
▲ New Sol (PEN)	3,6098	0.01%	0.16%	-0.16%	8.98%
▲ Chilean Peso (CLP)	755.47	-0.64%	-1.89%	-1.64%	0.49%
▲ Colombian Peso (COP)	3,530.71	-1.12%	-2.47%	-8.79%	7.74%
▼ Mexican Peso (MXN)	19.97	-0.32%	0.02%	-6.58%	5.50%

\*Legend: Variation 1D: 1 day; 5D: 5 days; 1M: 1 Month; YTD: Var% 12/31/19 to date



Base: 02/09/20=100  
Source: Bloomberg

Fixed Income	Currency	Price	Bid Yield (%)	Ask Yield (%)	Duration
PERU 7.35 07/21/25	USD	127.661	1.25	1.14	3.99
PERU 4.125 08/25/27	USD	116.534	1.57	1.49	5.94
PERU 8.75 11/21/33	USD	167.57	2.62	2.54	9.15
PERU 6.55 03/14/37	USD	148.98	2.82	2.76	10.85
PERU 5.625 11/18/2050	USD	153.39	2.95	2.91	17.74
CHILE 2.25 10/30/22	USD	103.335	0.60	0.38	1.87
CHILE 3.125 01/21/26	USD	110.453	1.07	0.99	4.74
CHILE 3.625 10/30/42	USD	115.567	2.70	2.66	15.97
COLOM 11.85 03/09/28	USD	165.508	2.19	1.98	5.47
COLOM 10.375 01/28/33	USD	159.06	4.23	4.05	7.97
COLOM 7.375 09/18/37	USD	144.173	3.83	3.76	10.92
COLOM 6.125 01/18/41	USD	132.295	3.84	3.78	12.72
MEX 4 10/02/23	USD	132.295	3.84	3.783	12.72
MEX5.55 01/45	USD	127.854	3.80	3.76	14.57



Source: Bloomberg

## Equity

Largest gains	Exchange	Currency	Price	▲%
INFRAESTRUCTURA	Mexico	MXN	79.28	11.35
ENEL CHILE SA	Chile	CLP	57.22	6.95
INDUSTRIAS PENOL	Mexico	MXN	336.14	6.55
GRUPO MEXICO-B	Mexico	MXN	78.78	5.03
KIMBERLY-CLA M-A	Mexico	MXN	33.75	4.65

Per Turnover	Exchange	Amount (US\$)
GRUPO F BANORT-O	Mexico	71,590,479
GRUPO MEXICO-B	Mexico	40,394,632
WALMART DE MEXIC	Mexico	39,064,838
AMERICA MOVIL-L	Mexico	38,431,346
INFRAESTRUCTURA	Mexico	34,321,541

Largest losses	Exchange	Currency	Price	▼%
FIBRA UNO	Mexico	MXN	20.15	-2.42
SOQUIMICH-B	Chile	CLP	34661	-2.36
VOLCAN CIA MIN-B	Peru	PEN	0.396	-2.22
CERVEZAS	Chile	CLP	5625	-2.21
CONCHATORO	Chile	CLP	1274.6	-1.96

Per Volume	Exchange	Volume
ITAU CORPBANCA	Chile	1,009,208,972
BANCO SANTANDER	Chile	189,411,791
BANCO DE CHILE	Chile	132,092,992
ENEL AMERICAS SA	Chile	77,046,474
ENEL CHILE SA	Chile	60,651,828

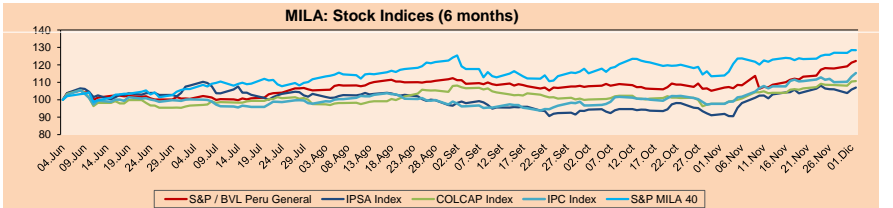
## MILA

Peru: The General Index of the BVL ended today's session with a positive result of +0.83%. The index maintains an annual accumulated negative trend of -1.03% in local currency, while the adjusted return in dollars amounts to -0.19%. Then, the S&P / BVL Peru SEL varied by +0.44% while the S&P / BVL LIMA 25 by +0.27%. The PEN spot reached 5 / 3.6098. Owner: Unemployment will be lifted in Ica due to the repeal of the labor chapter in the Agrarian Promotion Law and cessation of services.

Chile: The IPSA index ended the day with a positive return of +1.13%. The sectors that benefited the most during the session were Energy (+4.33%) and Finance (+3.03%). The best performing stocks were Enel Chile SA (+6.95%) and Empresas COPEC SA (+4.33%). Headline: Porsche and Siemens Energy advance in the development of non-polluting synthetic fuels in Chile.

Colombia: The COLCAP index had a positive result of +0.26%. The sectors with the best returns on the day were Non-Basic Consumer Products (+1.44%) and Finance (+1.10%). The securities with the best results were Corporación Financiera Colombi (+3.68%) and Almacenes Éxito SA (+2.23%). Headline: Sales of new vehicles in Colombia fall 6.7% in November, but show improvement.

Mexico: The MEXBOL index closed the session with a positive result of +1.82%. The sectors with the best returns of the day were Public Services (+11.35%) and Materials (+2.86%). The best performing stocks were Infraestructura Energética Nov (+11.35%) and Industrias Peñoles SAB de CV (+6.55%). Headline: Mexico cancels gas supply to Braskem-Idesa's petrochemical company and says it will not renew the agreement.

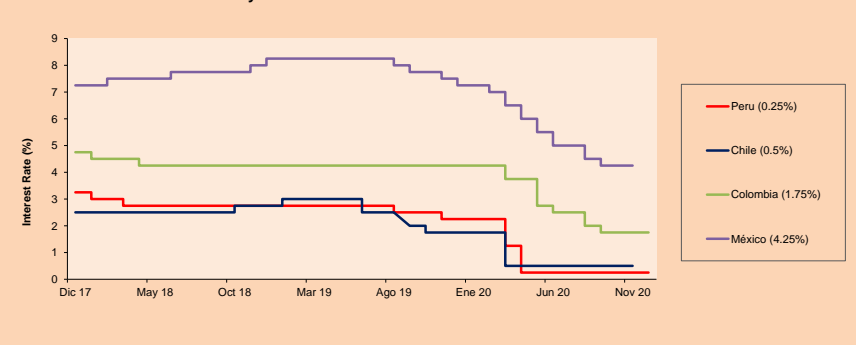


Base: 05/06/20=100  
Source: Bloomberg

## ETFs

ETFs	Curr.	Close	1D	5D	30 D	YTD	Exchange
▲ iShares MSCI All Peru Caped Index Fund	USD	34.0864	0.28%	2.99%	14.77%	-8.00%	NYSE Arca
▲ iShares MSCI All Chile Caped Index Fund	USD	27.99	-0.74%	-0.07%	15.23%	-16.02%	Cboe BZX
▲ Global X MSCI Colombia	USD	10.06	2.09%	3.34%	22.46%	-27.63%	NYSE Arca
▲ iShares MSCI Mexico Capped	USD	42.62	1.36%	2.55%	25.02%	-5.35%	NYSE Arca
▲ iShares MSCI Emerging Markets	USD	49.76	0.14%	0.38%	9.89%	10.90%	NYSE Arca
▲ Vanguard FTSE Emerging Markets	USD	48.53	-0.04%	0.46%	9.38%	9.13%	NYSE Arca
▲ iShares Core MSCI Emerging Markets	USD	59.87	0.18%	0.57%	10.46%	11.37%	NYSE Arca
▲ iShares JP Morgan Emerging Markets Bonds	USD	59.84	-0.20%	0.28%	7.75%	2.01%	Cboe BZX
▲ Morgan Stanley Emerging Markets Domestic	USD	6.21	0.16%	1.97%	11.09%	-11.16%	New York

## MILA: Policy Rate



Source: Bloomberg

Capital Market Laboratory Coordinator: Economist Bruno Bellido  
Collaboration: Piero Best, Luis Davila, Laura Delgado and Alonso Hernández  
email: pulsobursatil@ulima.edu.pe  
facebook: www.facebook.com/pulsobursatil.ul

The content of this document is just for informational purposes. The information and opinions expressed should not be considered as recommendations for future decisions. Under any circumstances, the Capital Market Laboratory of University of Lima will be responsible for the use of the statements in this document.

## WORLD

Main Indices	Close	1 D*	5 D*	1 M*	YTD*	Market Cap. (US\$ Mill.)
▲ Dow Jones (USA)	29,883.79	0.20%	-0.54%	8.75%	4.71%	9,282,119
▲ Standard & Poor's 500 (EEUU)	3,669.01	0.18%	0.92%	8.90%	13.56%	31,751,318
▲ NASDAQ Composite (USA)	12,349.37	-0.05%	2.60%	10.65%	37.63%	19,857,885
▼ Stoxx EUROPE 600 (Europe)	391.69	-0.05%	-0.10%	9.81%	-5.99%	8,855,327
▼ DAX (Germany)	13,313.24	-0.52%	0.18%	9.65%	0.05%	1,002,445
▲ FTSE 100 (United Kingdom)	6,483.39	1.23%	1.13%	11.72%	-14.29%	1,383,351
▲ CAC 40 (France)	5,583.01	0.02%	0.21%	15.78%	-6.93%	1,475,511
▲ IBEX 35 (Spain)	8,220.80	0.98%	0.69%	21.33%	-14.21%	441,964
▲ MSCI AC Asia Pacific Index	191.54	0.25%	0.20%	9.50%	12.23%	24,554,310
▲ HANG SENG (Hong Kong)	26,532.58	-0.13%	-0.51%	7.17%	-5.18%	3,713,981
▲ SHANGHAI SEC Comp. (China)	3,449.38	-0.07%	2.59%	5.29%	12.85%	6,390,246
▲ NIKKEI 225 (Japan)	26,800.98	0.05%	1.92%	15.08%	13.33%	3,683,376
▲ S&P / ASX 200 (Australia)	6,590.20	0.03%	-1.39%	9.05%	-1.03%	1,544,491
▲ KOSPI (South Korea)	2,675.90	1.82%	3.49%	15.06%	22.69%	1,609,062

\*Legend: Variation 1D: 1 Day; 5D: 5 Days; 1M: 1 Month; YTD: Var.% 12/31/19 to date

## Equity

Germany (Stocks from DAX Index)						Europe (Stocks from STOXX EUROPE 600)					
Largest gains	Curr.	Price	▲ %	Exchange		Largest losses	Curr.	Price	▼ %	Exchange	
MTX GY	EUR	206.3	1.28	Xetra		CON GY	EUR	116.5	-1.98	Xetra	
EOAN GY	EUR	9.118	1.24	Xetra		FME GY	EUR	69.42	-1.89	Xetra	
DWNI GY	EUR	41.48	1.00	Xetra		ADS GY	EUR	267.8	-1.83	Xetra	
DB1 GY	EUR	139.5	0.90	Xetra		BAYN GY	EUR	47.825	-1.75	Xetra	

## Global Overview:

### United States:

US markets ended trading with mixed returns, as investors assessed positive vaccine developments and likely fiscal stimulus against a disappointing private jobs report. In Congress, discussions to close an agreement for a new fiscal stimulus continue. Steny Hoyer, majority leader of the House of Representatives, said he remains hopeful of reaching an agreement in the next few days. Besides, vaccine developments have been driving US markets higher. On the latest news, Pfizer and BioNTech vaccines received the green light for use in Great Britain, which now becomes the first Western country to allow a coronavirus vaccine. In economic data, private payrolls showed lower growth in November. This can be attributed to recent infections and trade restrictions complicating the job market's recovery, according to Reuters. This news weighed on the sentiment of market agents. In individual stocks, Pfizer + 3.53%, BioNTech + 6.21% and NetApp + 9%. The latter rose after announcing quarterly earnings estimates that beat investors' expectations. Thus, the S&P 500 + 0.18% and DJIA + 0.2% rose; instead, the NASDAQ -0.05% fell.

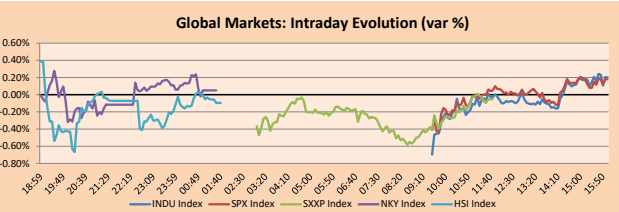
### Europe:

European markets closed today's session with mixed returns as the UK becomes the first country to approve a Covid-19 vaccine. It was necessary that the shares of the German BioNTech + 5.39% rose after the British government authorized distribution of the coronavirus vaccine in conjunction with the US laboratories Pfizer + 3.53%, who would have already available the distribution from the next week. This news caused the FTSE 100 index to reach pre-pandemic levels, having recovered 60% from the March lows. Meanwhile, recent data in Germany shows a higher-than-expected commercial sector rebound in October. On the other hand, investors were also on the lookout for moves from Britain and the European Union, as trade talks on Brexit were still stalled according to comments from the European Union negotiator. It is recalled that the bloc would have said that it would launch contingency measures on Wednesday or Thursday if an agreement was reached by then. In this way, the main indexes Stoxx 600 -0.05%, FTSE 100 + 1.23%, CAC 40 + 0.02% and DAX -0.52% closed with mixed results.

### Asia:

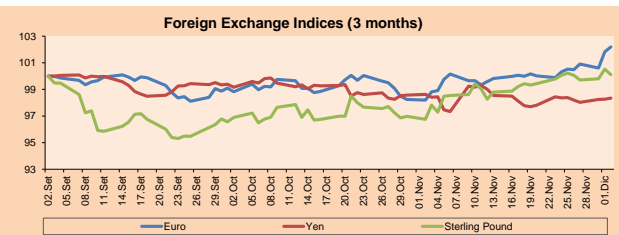
Asian markets closed today's session with mixed results following statements by the elected president of the United States, Joe Biden, regarding the trade war with China. The New York Times published Biden's remarks on the trade relationship between the two powers, and said he will not immediately cancel the Phase 1 trade agreement that President Donald Trump signed with China, nor will he take steps to eliminate tariffs on its exports. As a consequence, Chinese stocks erased previous gains to close almost unchanged on Wednesday, as the real estate sector offset losses in the healthcare sector. By contrast, Japan's market extended its rally and closed at a 29 1/2 year high as investors regained their hopes for US stimulus, after Biden declared that his priority is to get a large aid package through Congress even before he takes office in January. In Australia, its benchmark closed almost unchanged, S & P / ASX 200 + 0.03%, even after data from the expansion of its economy that exceeded expectations, + 3.3% YoY in the third quarter. Thus, the Nikkei 225 + 0.05%, Shanghai Composite -0.07%, Shenzhen Composite + 0.16%, Hang Seng -0.13%, S & P / ASX 200 + 0.03% and KOSPI + 1.58% closed the session with mixed results.

ETFs	Curr.	Close	1D	5D	30 D	YTD	Exchange
SPDR S&P 500 ETF TRUST	USD	366.79	0.21%	1.14%	11.08%	13.98%	NYSE Arca
ISHARES MSCI EMERGING MARKET	USD	49.76	0.14%	0.38%	9.89%	10.90%	NYSE Arca
ISHARES IBOXX HIGH YLD CORP	USD	86.44	0.28%	0.20%	3.25%	-1.71%	NYSE Arca
FINANCIAL SELECT SECTOR SPDR	USD	28.62	1.10%	0.21%	17.73%	-7.02%	NYSE Arca
VANECK GOLD MINERS	USD	36.97	0.03%	5.87%	-6.89%	22.85%	NYSE Arca
ISHARES RUSSELL 2000 ETF	USD	182.89	0.10%	-0.38%	17.97%	10.39%	NYSE Arca
SPDR GOLD SHARES	USD	171.46	0.75%	1.15%	-3.63%	19.99%	NYSE Arca
ISHARES 20+ YEAR TREASURY BO	USD	156.25	-0.79%	-1.53%	-1.47%	15.33%	NASDAQ GM
INVESCO QQQ TRUST SERIES 1	USD	303.85	0.13%	2.56%	12.55%	42.91%	NASDAQ GM
ISHARES NASDAQ BIOTECHNOLOGY	USD	144.99	-0.23%	4.35%	11.21%	20.31%	NASDAQ GM
ENERGY SELECT SECTOR SPDR	USD	38.13	3.25%	-3.15%	28.38%	-36.48%	NYSE Arca
PROSHARES ULTRA VIX ST FUTUR	USD	11.19	-0.89%	-0.97%	-48.41%	-13.19%	NYSE Arca
UNITED STATES OIL FUND LP	USD	30.97	1.14%	-1.28%	17.94%	-69.78%	NYSE Arca
ISHARES MSCI BRAZIL ETF	USD	34.88	-0.03%	3.01%	28.38%	-26.49%	NYSE Arca
SPDR S&P OIL & GAS EXP & PR	USD	56.54	3.23%	-5.42%	31.77%	-41.41%	NYSE Arca
UTILITIES SELECT SECTOR SPDR	USD	63.70	0.66%	-1.09%	-0.08%	-1.42%	NYSE Arca
ISHARES US REAL ESTATE ETF	USD	84.36	-0.89%	-0.94%	6.17%	-9.37%	NYSE Arca
SPDR S&P BIOTECH ETF	USD	132.82	-0.09%	4.73%	17.79%	39.65%	NYSE Arca
ISHARES IBOXX HIGH YLD GRA	USD	117.22	-0.39%	-0.21%	2.43%	1.24%	NYSE Arca
ISHARES JPM MORGAN USD EMERGI	USD	114.20	0.05%	0.09%	4.01%	-0.31%	NASDAQ GM
REAL ESTATE SELECT SECT SPDR	USD	36.57	-1.06%	-0.87%	4.52%	-5.43%	NYSE Arca
ISHARES CHINA LARGE-CAP ETF	USD	47.15	-0.70%	-0.17%	4.82%	8.07%	NYSE Arca
CONSUMER STAPLES SPDR	USD	66.94	-0.83%	0.01%	5.83%	6.29%	NYSE Arca
VANECK JR GOLD MINERS	USD	52.57	-0.27%	7.00%	-4.16%	24.40%	NYSE Arca
SPDR BBG BARC HIGH YIELD BND	USD	107.76	0.20%	0.21%	3.51%	-14.62%	NYSE Arca
VANGUARD REAL ESTATE ETF	USD	84.41	-0.79%	-1.01%	7.64%	-9.03%	NYSE Arca
GRAYSACLE BITCOIN TRUST BTC	USD	23.39	-1.47%	12.10%	50.81%	185.59%	OTC US



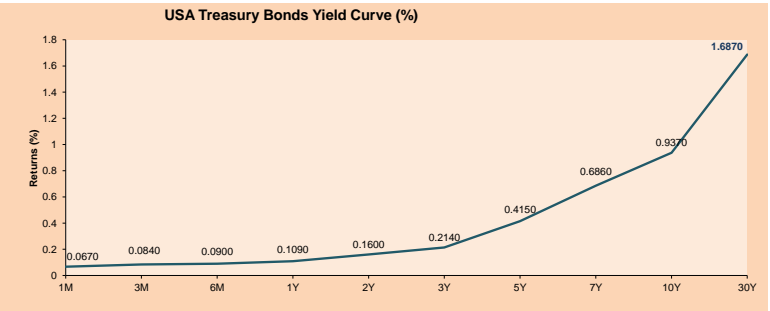
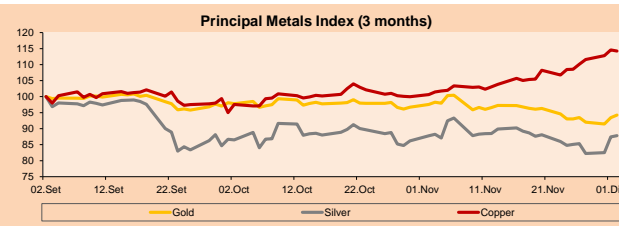
Currency	Price	1 D*	5 D*	1 M*	YTD*
▲ Euro	1.2115	0.36%	1.66%	4.07%	8.04%
▲ Yen	104.4200	0.09%	-0.04%	-0.29%	-3.86%
▼ Sterling Pound	1.3365	-0.41%	-0.11%	3.47%	0.81%
▼ Yuan	6.5630	-0.14%	-0.24%	-1.91%	-5.75%
- Hong Kong Dollar	7.7518	0.00%	0.01%	0.02%	-0.51%
▲ Brazilian Real	5.2312	0.25%	-1.61%	-8.95%	29.79%
▲ Argentine Peso	81.4585	0.03%	0.83%	3.53%	36.05%

\*Legend: Variation 1D: 1 Day; 5D: 5 Days; 1M: 1 Month; YTD: Var.% 12/31/19 to date



Commodities	Close	1 D*	5 D*	1 M*	YTD*
▲ Oro (US\$ Oz. T) (LME)	1,831.28	0.89%	1.31%	-3.39%	20.70%
▲ Plata (US\$ Oz. T) (LME)	24.10	0.42%	3.19%	0.06%	35.01%
▲ Cobres (US\$ TM) (LME)	7,666.50	-0.28%	5.26%	13.53%	24.68%
▲ Zinc (US\$ TM) (LME)	2,725.50	-0.98%	-0.47%	7.81%	19.57%
▲ Petróleo WTI (US\$ Barril) (NYM)	45.28	1.64%	-0.94%	21.79%	-19.19%
▲ Estano (US\$ TM) (LME)	18,802.62	-0.50%	0.21%	5.82%	9.46%
▲ Plomo (US\$ TM) (LME)	2,042.25	-1.54%	1.24%	14.40%	6.73%
▲ Añacar #11 (US\$ Libra) (NYB-ICE)	14.60	0.62%	-1.15%	-2.47%	1.53%
▲ Cacao (US\$ TM) (NYB-ICE)	2,638.00	-1.97%	-3.16%	16.52%	8.47%
▲ Café Arabica (US\$ TM) (NYB-ICE)	119.10	0.55%	1.66%	13.05%	-14.96%

\*Lenda: Variación 1D: 1 Día; 5D: 5 Días; 1M: 1 Mes; YTD: Var.% 31/12/19 a la fecha



Capital Market Laboratory Coordinator: Economist Bruno Bellido  
Collaboration: Piero Best, Luis Davila, Laura Delgado and Alonso Hernandez  
email: pulsobursatil@ulima.edu.pe  
facebook: www.facebook.com/pulsobursatil.ulima

LIMA

Stocks

Ticker	Currency	Price	1D*	5D*	30D*	YTD*	Frequency	Volume (US\$)	Beta	Dividend Yield (%)	Price Earning	Market Cap. (M US\$)	Economic Sector*	Index Weight
- ALICORC1 PE**	S/.	7.09	0.00%	3.35%	12.24%	1.46%	100.00%	2,822,957	0.76	3.53	16.31	1,678.48	Industrial	3.53%
- ATACOB1 PE**	S/.	0.15	0.00%	0.00%	16.00%	-12.12%	40.00%	469	1.10	0.00	-	37.95	Mining	1.02%
- BACKUS1 PE**	S/.	19.50	0.00%	-0.05%	2.63%	-31.58%	90.00%	380,891	0.52	3.35	8.82	8,252.17	Industrial	0.82%
▲ BAP PE**	US\$	160.98	2.22%	6.26%	37.06%	-24.31%	100.00%	10,363,770	1.56	5.47	-	15,193.67	Diverse	5.82%
▲ BVN PE**	US\$	11.79	0.94%	7.77%	-5.30%	-22.94%	95.00%	233,807	1.37	0.22	-	3,249.73	Mining	5.88%
▲ CASAGRC1 PE**	S/.	6.10	3.21%	19.14%	22.00%	101.32%	95.00%	118,256	0.58	1.76	10.95	142.34	Agricultural	1.31%
▼ BBVAC1 PE**	S/.	2.30	-1.71%	2.22%	13.30%	-25.61%	100.00%	255,500	0.78	3.75	11.97	4,160.09	Finance	2.85%
▲ CORARE1 PE**	S/.	0.88	1.15%	-1.12%	8.64%	-3.30%	95.00%	103,287	0.67	5.38	6.26	349.04	Industrial	1.72%
▲ CPACASC1 PE**	S/.	6.02	0.33%	-0.99%	7.50%	-2.11%	100.00%	453,350	0.60	5.98	19.42	712.69	Industrial	2.38%
▲ CVERDEC1 PE**	US\$	20.99	1.89%	7.09%	13.46%	8.76%	100.00%	936,153	0.75	0.00	34.12	7,347.68	Mining	5.25%
▲ ENGEPEC1 PE**	S/.	2.01	0.50%	0.50%	0.50%	-12.61%	50.00%	10,539	0.49	12.55	10.10	1,580.67	Public Services	1.44%
▲ ENDISPC1**	S/.	5.20	1.56%	1.96%	0.00%	-29.25%	75.00%	176,559	0.46	0.39	9.81	919.87	Public Services	0.98%
- FERREYC1 PE**	S/.	1.70	0.00%	0.00%	-1.73%	-22.37%	100.00%	448,702	0.70	4.51	34.13	459.49	Diverse	4.90%
- AENZAC1 PE**	S/.	1.73	0.00%	3.59%	24.46%	1.76%	100.00%	424,273	0.76	0.00	-	417.87	Diverse	4.05%
- IFS PE**	US\$	30.50	0.00%	4.45%	48.42%	-25.43%	95.00%	123,769	1.24	5.74	30.37	3,521.16	Diverse	7.22%
- INRETC1 PE**	US\$	35.80	0.00%	0.85%	6.23%	-0.56%	100.00%	608,815	0.62	1.58	28.91	3,680.50	Diverse	5.28%
- LUSURC1 PE**	S/.	26.60	0.00%	-1.48%	2.27%	3.30%	90.00%	1,161,236	0.49	2.44	26.10	3,588.26	Public Services	1.81%
- MINSUR1 PE**	S/.	1.70	0.00%	0.00%	1.80%	8.97%	75.00%	2,472	0.74	0.00	-	1,357.72	Mining	3.09%
▼ PML PE**	US\$	0.09	-1.09%	-1.09%	5.81%	62.50%	70.00%	14,822	1.29	0.00	-	24.04	Mining	2.12%
▼ RELAPAC1 PE**	S/.	0.06	-1.59%	-6.06%	0.00%	-49.59%	95.00%	18,691	0.73	0.00	-	142.89	Industrial	2.12%
▼ SCCO PE**	US\$	60.36	-0.05%	0.60%	12.72%	42.26%	90.00%	102,011	0.83	2.49	35.16	46,662.70	Mining	2.14%
- SIDERC1 PE**	S/.	0.83	0.00%	3.75%	15.28%	-6.74%	90.00%	11,614	0.87	0.00	9.86	282.33	Industrial	1.43%
- TV PE**	US\$	0.15	0.00%	-3.31%	46.00%	-15.61%	85.00%	9,262	1.52	0.00	-	117.17	Mining	2.93%
- UNACEMC1 PE**	S/.	1.50	0.00%	0.00%	15.38%	-25.00%	95.00%	554,042	0.88	1.73	72.99	755.50	Industrial	3.00%
▼ VOLCABC1 PE**	S/.	0.40	-2.22%	-3.41%	7.03%	-11.01%	100.00%	376,081	0.89	0.00	-	1,761.25	Mining	5.90%
- NEXAPEC1 PE**	S/.	2.72	0.00%	-2.86%	13.33%	-21.16%	50.00%	3,979	0.99	0.00	-	996.00	Mining	1.56%

Quantity of shares: 26

Source: Bloomberg, Económica

\* Bloomberg Industry Classification System

\*\* PER is used in the stock market and original currency of the instrument

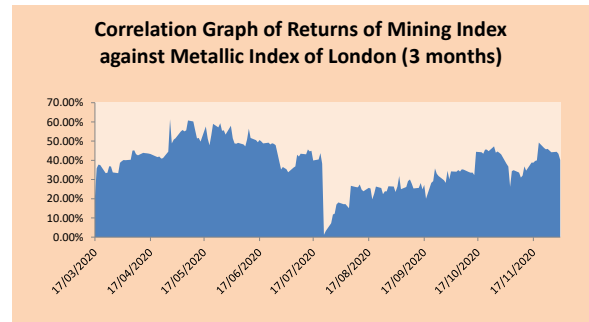
\*Legend: Variation 1D: 1 Day; 5D: 5 Days; 1M: 1 Month; YTD: Var.% 12/31/19 to date

Sectorial Indices

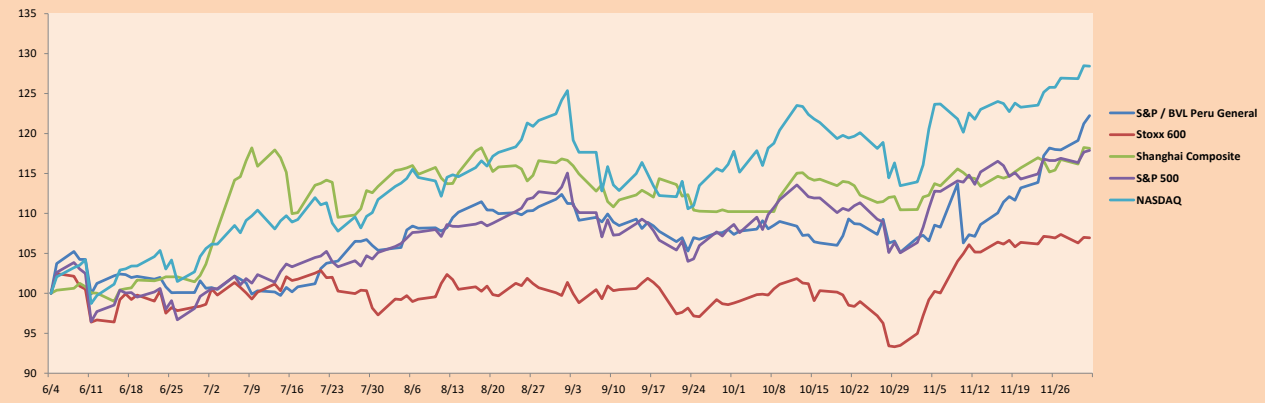
	Close	1D*	5D*	30D*	YTD*	Beta
▲ S&P/BVLMining	363.51	0.28%	2.81%	6.87%	19.32%	0.98
▲ S&P/BVLConsumer	1,040.59	0.02%	-0.39%	3.60%	-8.74%	0.41
▲ S&P/BVLIndustrials	189.35	0.74%	1.06%	11.19%	-10.31%	0.58
▲ S&P/BVLFinancials	1,033.88	1.88%	6.07%	36.47%	-12.35%	1.60
▲ S&P/BVLConstruction	209.34	1.05%	1.53%	14.89%	-7.63%	0.57
▲ S&P/BVLPublicSvcs	622.43	0.26%	0.10%	2.04%	-4.46%	0.08
▲ S&P/BVLElectricUtil	607.65	0.26%	0.10%	2.04%	-4.46%	0.08

S&P/BVLConstructionTRPEN

\*Legend: Variation 1D: 1 Day; 5D: 5 Days; 1M: 1 Month; YTD: Var.% 12/31/19 to date



Indices (6 months)



Base: 04/06/20=100  
Source: Bloomberg

Capital Market Laboratory Coordinator: Economist Bruno Bellido  
Collaboration: Piero Best, Luis Davila, Laura Delgado and Alonso Hernández  
email: pulsohorsatil@ulima.edu.pe  
facebook: www.facebook.com/pulsohorsatil.ul

The content of this document is just for informational purposes. The information and opinions expressed should not be considered as recommendations for future decisions. Under any circumstances, the Capital Market Laboratory of University of Lima will be responsible for the use of the statements in this document.

### SOVEREIGN RATING

RISK RATINGS

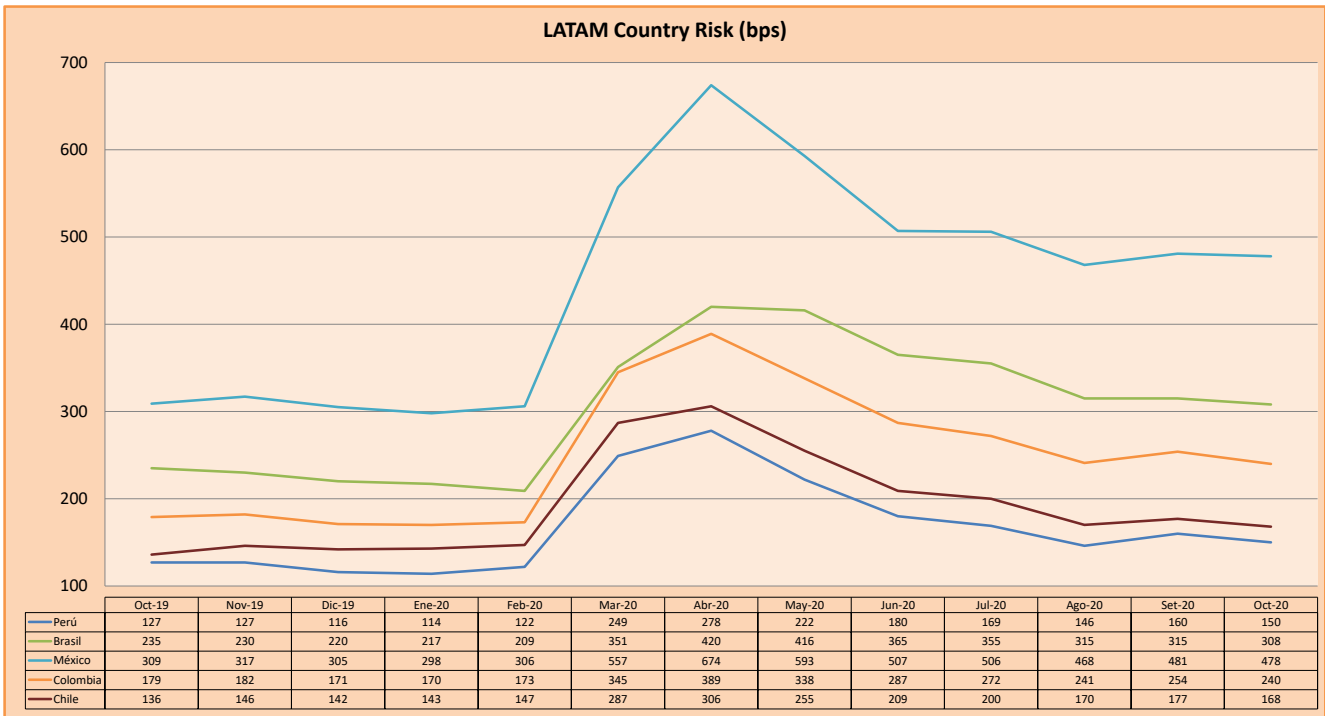
Moody's	S&P	Fitch	
Aaa	AAA	AAA	Prime
Aa1	AA+	AA+	High credit quality
Aa2	AA	AA	
Aa3	AA-	AA-	
A1	A+	A+	Medium-high grade, with low credit risk
A2	A	A	
A3	A-	A-	
Baa1	BBB+	BBB+	Moderate Credit Risk
Baa2	BBB	BBB	
Baa3	BBB-	BBB-	
Ba1	BB+	BB+	It has speculative elements and it is subject to substantial credit risk
Ba2	BB	BB	
Ba3	BB-	BB-	
B1	B+	B+	It is considered speculative and it has high credit risk
B2	B	B	
B3	B-	B-	
Caa1	CCC+		Bad credit conditions and it is subject to high credit risk
Caa2	CCC		
Caa3	CCC-	CCC	
Ca	C		Very close to default or in default
		DDD	
C	D	DD D	

Source: Bloomberg

Latin America Credit Rating			
Clasificadora de riesgo			
Country	Moody's	Fitch	S&P
Peru	A3	BBB+	BBB+
México	Ba2	BB-	BB-
Venezuela	C	WD	SD
Brazil	Ba2	BB-	BB-
Colombia	Baa2	BBB-	BBB-
Chile	A1	A-	A+
Argentine	Ca	WD	CCC+
Panama	Baa1	BBB	BBB

Source: Bloomberg

LATAM Country Risk (bps)



Source: BCRP

Capital Market Laboratory Coordinator: Economist Bruno Bellido  
Collaboration: Piero Best, Luis Davila, Laura Delgado and Alonso Hernández  
email: pulsobursatil@ulima.edu.pe  
facebook: www.facebook.com/pulsobursatil.ul