

# PULSO BURSÁTIL

FACULTAD DE CIENCIAS EMPRESARIALES Y ECONÓMICAS  
CARRERA DE ECONOMÍA  
LABORATORIO DE MERCADO DE CAPITALES

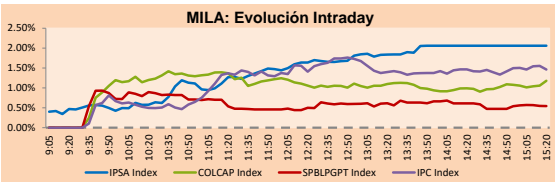


## MILA

Lima, december 17, 2020

Main Indexes	Close	1 D	5 D	1 M	YTD	Cap. Burs. (US\$ bill)
▲ IPSA (Chile)	4,199.33	2.15%	2.26%	2.20%	-10.08%	114.11
▲ IGPA (Chile)	20,994.56	1.96%	2.09%	2.44%	-10.25%	140.39
▲ COLSC (Colombia)	1,047.13	0.42%	2.18%	13.99%	7.06%	6.05
▲ COLCAP (Colombia)	1,443.59	1.56%	5.49%	16.93%	-13.16%	88.54
▲ S&P/BVL (Perú)*	20,811.72	0.64%	0.14%	11.72%	1.39%	104.34
▲ S&P/BVL SEL (Perú)	542.94	0.44%	0.11%	10.32%	2.17%	85.87
▲ S&P/BVL LIMA 25	25,089.05	0.76%	-0.62%	7.78%	-2.58%	103.45
▲ IPC (México)	44,326.05	1.22%	1.86%	4.91%	1.80%	283.90
▲ S&P MILA 40	533.10	2.60%	4.06%	13.15%	-11.60%	5,625.72

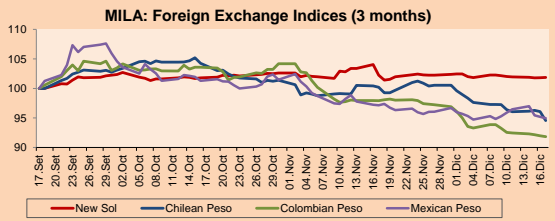
\*Legend: Variation 1D: 1 day; 5D: 5 days; 1M: 1 Month; YTD: Var% 12/31/19 to date



Source: Bloomberg

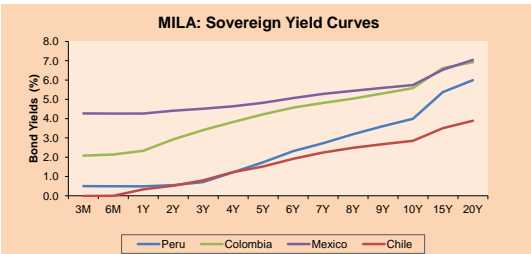
Currency	Price	1D*	5D*	30 D*	YTD*
▲ New Sol (PEN)	3,588.6	0.04%	-0.16%	-0.39%	8.34%
▲ Chilean Peso (CLP)	721.73	-1.60%	-1.91%	-5.64%	-3.99%
▲ Colombian Peso (COP)	3,412.43	-0.17%	-0.79%	-6.23%	4.13%
▼ Mexican Peso (MXN)	19.82	-0.24%	-0.98%	-2.27%	4.70%

\*Legend: Variation 1D: 1 day; 5D: 5 days; 1M: 1 Month; YTD: Var% 12/31/19 to date



Base: 17/09/20=100  
Source: Bloomberg

Fixed Income	Currency	Price	Bid Yield (%)	Ask Yield (%)	Duration
PERU 7.35 07/21/25	USD	128.184	1.11	0.97	3.95
PERU 4.125 08/25/27	USD	117.506	1.42	1.32	5.91
PERU 8.75 11/21/33	USD	170.216	2.44	2.36	9.16
PERU 6.55 03/14/37	USD	151.316	2.68	2.60	10.83
PERU 5.625 11/18/2050	USD	156.253	2.85	2.81	17.80
CHILE 2.25 10/30/22	USD	103.733	0.39	0.09	1.83
CHILE 3.125 01/21/26	USD	111.011	0.97	0.84	4.71
CHILE 3.625 10/30/42	USD	117.141	2.62	2.57	15.98
COLOM 11.85 03/09/28	USD	165.553	2.08	1.99	5.44
COLOM 10.375 01/28/33	USD	161.191	4.09	3.83	7.84
COLOM 7.375 09/18/37	USD	145.742	3.73	3.65	10.93
COLOM 6.125 01/18/41	USD	133.784	3.76	3.69	12.74
MEX 4 10/02/23	USD	133.784	3.755	3.687	12.74
MEX5.55 01/45	USD	130.586	3.65	3.62	14.65



Source: Bloomberg

### Equity

Largest gains	Exchange	Currency	Price	▲ %
PARQUE ARAUCO	Chile	CLP	1235.00	7.86
GRUPO CARSO-A1	Mexico	MXN	56.98	6.82
VOLCAN CIA MIN-B	Peru	PEN	0.47	5.86
GRUPO F BANORT-O	Mexico	MXN	114.94	4.81
EMPRESAS COPEC	Chile	CLP	7130.00	4.55

Per Turnover	Exchange	Amount (US\$)
GRUPO F BANORT-O	Mexico	54,066,058
WALMART DE MEXIC	Mexico	51,714,372
AMERICA MOVIL-L	Mexico	49,717,698
GRUPO MEXICO-B	Mexico	38,614,665
FOFOMENTO ECON-UBD	Mexico	25,884,684

Largest losses	Exchange	Currency	Price	▼ %
ALFA SAB-A	Mexico	MXN	14.26	-4.17
PROMOTORA Y OPEF	Mexico	MXN	175.43	-1.69
AMERICA MOVIL-L	Mexico	MXN	14.21	-1.59
GRUPO FIN INB-O	Mexico	MXN	20.04	-1.52
INRETAIL PERU CO	Peru	USD	35.6	-1.11

Per Volume	Exchange	Volume
ITAU CORPBANCA	Chile	266,691,617
BANCO SANTANDER	Chile	87,915,151
AMERICA MOVIL-L	Mexico	69,030,676
ENEL CHILE SA	Chile	55,524,326
BANCO DE CHILE	Chile	54,361,592

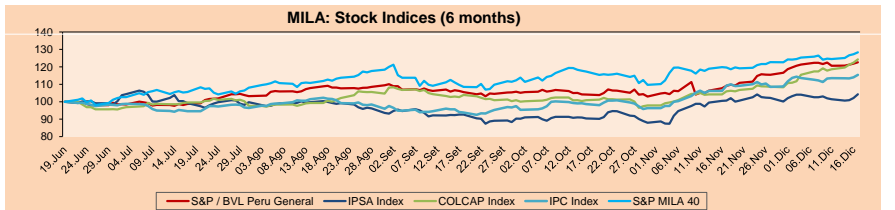
### MILA

Peru: The General Index of the BVL ended today's session with a positive result of +0.64%. The index maintains an annual accumulated positive trend of +1.39% in local currency, while the adjusted yield in dollars amounts to -6.42%. Then, the S&P / BVL Peru SEL varied by +0.44% while the S&P / BVL LIMA 25 by +0.76%. The PEN spot reached 3 / 3.5886. Headline: Peru's credit rating may depend on the outcome of upcoming elections, according to Fitch.

Chile: The IPSA index ended the day with a positive return of +2.15%. The sectors that benefited the most in the session were Real Estate (+4.58%) and Energy (+4.55%). The stocks with the best performance were Parque Arauco SA (+7.86%) and Empresas COPEC SA (+4.55%). Headline: Capital Economics believes that Chile is "well positioned" to take advantage of the "rebound" effect from vaccines in 2021.

Colombia: The COLCAP index ended the day with a positive return of +1.56%. The sectors that benefited the most during the session were Finance (+2.11%) and Materials (+1.86%). The stocks with the best performance were Grupo de Inversiones Suramerica (+4.58%) and Banco Davivienda SA (+3.87%). Headline: In competitiveness, Colombia improved in 88% of the variables.

Mexico: The IPC index closed the day with a positive return of +1.22%. The sectors most benefited during the day were Finance (+2.81%) and Real Estate (+2.6%). The stocks with the best performance were Grupo Carso SAB de CV (+6.82%) and Grupo Financiero Banorte SAB (+4.81%). Headline: Mexico will raise the minimum wage by 15% next year.

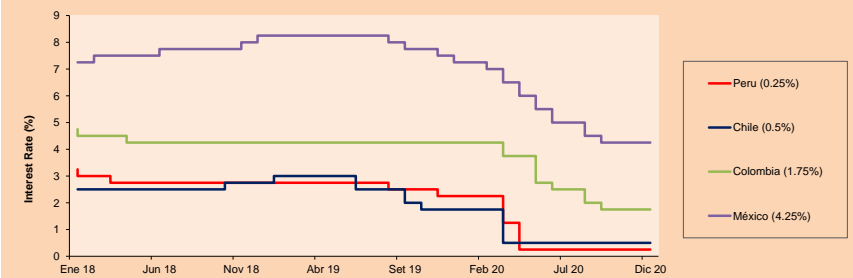


Base: 22/06/20=100  
Source: Bloomberg

### ETFs

ETFs	Curr.	Close	1D	5D	30 D	YTD	Exchange
▲ iShares MSCI All Peru Caped Index Fund	USD	34.845	1.00%	1.26%	10.76%	-5.95%	NYSE Arca
▲ iShares MSCI All Chile Caped Index Fund	USD	29.85	4.12%	3.18%	9.12%	-10.44%	Cboe BZX
▲ Global X MSCI Colombia	USD	11.35	1.98%	3.69%	21.39%	-18.35%	NYSE Arca
▲ iShares MSCI Mexico Capped	USD	43.49	1.73%	1.99%	6.78%	-3.42%	NYSE Arca
▲ iShares MSCI Emerging Markets	USD	51.05	0.65%	-0.06%	4.44%	13.77%	NYSE Arca
▲ Vanguard FTSE Emerging Markets	USD	50.18	0.80%	1.25%	5.40%	12.84%	NYSE Arca
▲ iShares Core MSCI Emerging Markets	USD	61.34	0.76%	-0.10%	4.78%	14.10%	NYSE Arca
▲ iShares JP Morgan Emerging Markets Bonds	USD	60.26	0.45%	-0.45%	1.35%	2.73%	Cboe BZX
▼ Morgan Stanley Emerging Markets Domestic	USD	6.36	-0.78%	0.32%	6.00%	-9.01%	New York

### MILA: Policy Rate



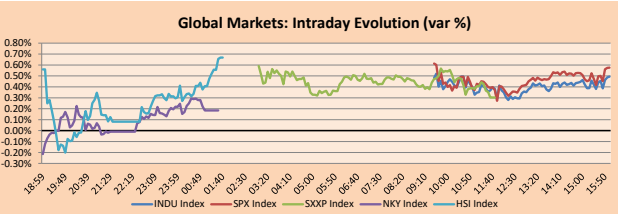
Source: Bloomberg

Capital Market Laboratory Coordinator: Economist Bruno Bellido  
Collaboration: Piero Best, Luis Davila, Laura Delgado and Alonso Hernández  
email: pulsobursatil@ulima.edu.pe  
facebook: www.facebook.com/pulsobursatil.ul

## WORLD

Main Indices	Close	1 D*	5 D*	1 M*	YTD*	Market Cap. (US\$ Mill.)
▲ Dow Jones (USA)	30,303.37	0.49%	1.01%	2.94%	6.18%	9,462,365
▲ Standard & Poor's 500 (EEUU)	3,722.48	0.58%	1.48%	4.34%	15.22%	32,214,973
▲ NASDAQ Composite (USA)	12,764.75	0.84%	2.89%	8.16%	42.26%	20,589,872
▲ Stoxx EUROPE 600 (Europe)	397.28	0.30%	1.05%	1.73%	-4.46%	8,874,277
▲ DAX (Germany)	13,667.25	0.75%	2.79%	3.52%	3.16%	1,015,270
▼ FTSE 100 (United Kingdom)	6,551.06	-0.30%	-0.74%	2.00%	-13.14%	1,385,311
▲ CAC 40 (France)	5,549.46	0.03%	0.00%	0.69%	-7.17%	1,454,332
▲ IBEX 35 (Spain)	8,153.40	0.17%	-0.35%	2.15%	-14.62%	435,881
▲ MSCI AC Asia Pacific Index	197.38	0.76%	1.62%	4.77%	15.66%	25,054,095
▲ HANG SENG (Hong Kong)	26,678.38	0.82%	1.01%	-0.16%	-5.99%	4,063,141
▲ SHANGHAI SEC Comp. (China)	3,404.87	1.13%	0.94%	1.79%	11.71%	6,350,702
▲ NIKKEI 225 (Japan)	26,806.67	0.18%	0.19%	4.00%	13.11%	3,786,647
▲ S&P / ASX 200 (Australia)	6,756.67	1.16%	1.10%	2.50%	0.15%	1,621,747
▲ KOSPI (South Korea)	2,770.43	1.22%	1.86%	8.89%	26.13%	1,664,201

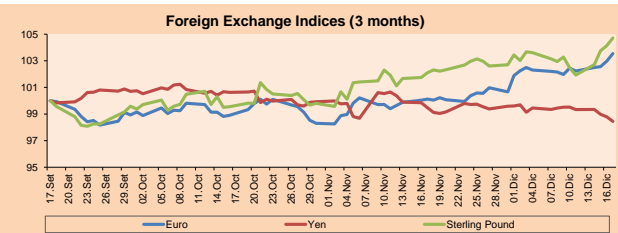
\*Legend: Variation 1D: 1 Day; 5D: 5 Days; 1M: 1 Month; YTD: Var. % 12/31/19 to date



Source: Bloomberg

Currency	Price	1 D*	5 D*	1 M*	YTD*
▲ Euro	1.2268	0.56%	1.07%	3.42%	9.41%
▼ Yen	103.1100	-0.35%	-1.08%	-1.04%	-5.06%
▲ Sterling Pound	1.3585	0.56%	2.18%	2.56%	2.47%
▲ Yuan	6.5338	0.02%	-0.16%	-0.35%	-6.17%
▲ Hong Kong Dollar	7.7524	0.00%	0.01%	0.00%	-0.50%
▼ Brazilian Real	5.0665	-0.38%	0.94%	-4.85%	25.71%
▲ Argentine Peso	82.7153	0.10%	0.71%	3.35%	38.15%

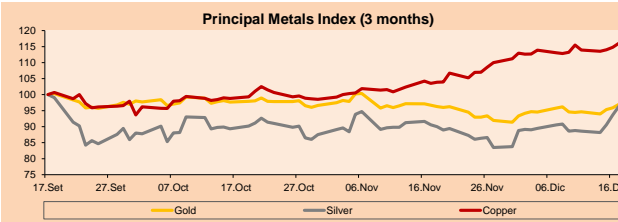
\*Legend: Variación 1D: 1 Día; 5D: 5 Días; 1M: 1 Mes; YTD: Var. % 12/31/19 a la fecha



Base: 17/09/20=100  
Source: Bloomberg

Commodities	Close	1 D*	5 D*	1 M*	YTD*
▲ Oro (US\$ Oz. T) (LME)	1,885.42	1.11%	2.66%	0.27%	24.26%
▲ Plata (US\$ Oz. T) (LME)	26.06	2.90%	8.59%	6.42%	45.99%
▲ Cobre (US\$ TM) (LME)	7,900.25	1.11%	0.50%	12.11%	28.48%
▲ Zinc (US\$ TM) (LME)	2,834.75	1.10%	-0.07%	5.81%	24.36%
▲ Petróleo WTI (US\$ Barril) (NYM)	48.36	-1.13%	3.38%	16.11%	-13.69%
▲ Estano (US\$ TM) (LME)	20,049.00	0.47%	2.85%	5.27%	16.71%
▼ Plomo (US\$ TM) (LME)	2,042.00	-0.55%	-1.84%	6.44%	6.72%
▲ Azúcar #11 (US\$ Libra) (NYB-ICE)	14.68	1.31%	0.14%	-4.11%	2.09%
▲ Cacao (US\$ TM) (NYB-ICE)	2,541.00	0.95%	-1.01%	0.95%	4.48%
- Café Arabica (US\$ TM) (NYB-ICE)	126.60	0.00%	4.58%	5.94%	-9.60%

\*Legend: Variación 1D: 1 Día; 5D: 5 Días; 1M: 1 Mes; YTD: Var. % 31/12/19 a la fecha



Base: 17/09/20=100  
Source: Bloomberg

## Equity

Germany (Stocks from DAX Index)

Largest gains	Curr.	Price	▲ %	Exchange	Largest losses	Curr.	Price	▼ %	Exchange
ADS GY	EUR	295	1.58	Xetra	HENS GY	EUR	90.24	-1.23	Xetra
MRK GY	EUR	139.1	1.53	Xetra	BEI GY	EUR	93.7	-1.18	Xetra
IFX GY	EUR	30.945	1.49	Xetra	BMW GY	EUR	73.78	-0.87	Xetra
DBK GY	EUR	9.097	1.42	Xetra	VOW3 GY	EUR	154.44	-0.75	Xetra

Europe (Stocks from STOXX EUROPE 600)

Largest gains	Curr.	Price	▲ %	Exchange	Largest losses	Curr.	Price	▼ %	Exchange
TKA GY	EUR	7.896	11.27	Xetra	PEO PW	PLN	60.3	-5.16	Warsaw
EVT GY	EUR	28.25	5.81	Xetra	REP SQ	EUR	8.284	-4.93	Soc Bol SIBSE
ZAL GY	EUR	89.68	5.43	Xetra	ANIS SE	CHF	18.99	-4.86	SIX Swiss Ex
LIGHT NA	EUR	34.45	4.97	EN Amsterdam	VOD LN	GBp	125.48	-4.05	Londres

## Global Overview:

### United States:

US markets closed today's session with positive returns, fueled by optimism about a coronavirus stimulus bill as there was better communication between Republicans and Democrats, prompting markets to look beyond signs of tension, caused by the COVID-19 pandemic. Negotiations improved in search of mitigating higher jobless claims which stood at 885,000 last week, higher than expected. Likewise, it was evident that retail sales in the United States fell more than expected in November, as consumer spending remained restricted. On the other hand, Advances on the vaccine front also boosted the market, with Moderna Inc. + 6.97% awaiting U.S. approval to implement what would be the second-largest COVID-19 vaccine in the country. In corporate stocks, Accenture was up + 6.88% after it raised its annual sales forecast and beat quarterly revenue estimates as an extended period of working from home boosted its security, cloud and digital services. Thus, the main indexes S&P 500 + 0.58%, DJIA + 0.49% and NASDAQ + 0.84% closed higher.

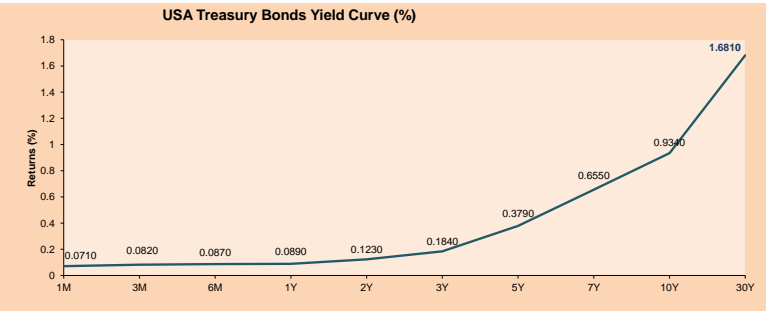
### Europe:

European markets ended today's session mostly on the upside, when investors viewed with optimism Fed's announcement to maintain support for the economy. Market sentiment saw an improvement after the US Federal Reserve reported that it will buy at least \$ 120 billion in bonds each month. Thus, in the STOXX 600, retail stocks were the biggest winners, rising 2.1% in relation to monetary policy, the Bank of England decided to leave the reference rate unchanged at 0.1% after having cut the rate on 2 occasions, when it was at levels of 0.75% at the beginning of the pandemic in March. In addition, it also reported that it would maintain the target stock of asset purchases at \$95 billion euros (equivalent to US \$ 1.2 trillion). In corporate stocks, British aviation company Signature Aviation had a strong 40% gain, leading in the STOXX 600, after confirming that it had initiated discussions with Blackstone for a probable cash purchase offer of US \$ 5.17 per share, according to CNBC. In this way, the STOXX 600 + 0.3%, CAC 40 + 0.03%, DAX + 0.75%, BEL 20 + 0.36% and FTSE MIB + 0.12% finish in positive territory, among other indices.

### Asia:

Asian markets closed the session with positive returns due to investor optimism about advances in a new stimulus package from North America. Market sentiment closely followed the decision of the United States Democrats and Republicans, who are expected to be close to agreeing to a \$ 900 billion COVID-19 aid bill, fueling expectations about the outlook for the worldwide economy. In China, stocks ended higher for the fourth consecutive session, with healthcare stocks the biggest performer of the day, with the sector sub-index gaining + 3.27%, driven by an increase of + 8.42% of Jianguo Hengrui Medicine Co Ltd.'s share price. Meanwhile, in Japan, Japan Post Insurance company + 10.05% posted a rise on media reports that it would buy back \$ 2.9 billion of its own shares from its parent, Japan Post Holdings + 3.58%. On the other hand, in Hong Kong, technology companies received support at the end of the session with an announcement from the Chinese Ministry of Finance that it would issue preferential tax policies for the semiconductor and software industries. Thus, the main indexes Nikkei 225 + 0.18%, Hang Seng + 0.82%, ASX 200 + 1.16%, CSI 300 + 1.28% and Shanghai Composite + 1.13% closed higher.

ETFs	Curr.	Close	1D	5D	30 D	YTD	Exchange
SPDR S&P 500 ETF TRUST	USD	372.24	0.56%	1.60%	3.22%	15.65%	NYSE Arca
ISHARES MSCI EMERGING MARKET	USD	51.05	0.65%	-0.06%	4.44%	13.77%	NYSE Arca
ISHARES IBOXX HIGH YLD CORP	USD	86.61	-0.26%	-0.18%	0.77%	-1.51%	NYSE Arca
FINANCIAL SELECT SECTOR SPDR	USD	28.74	3.20%	-0.03%	4.17%	-6.63%	NYSE Arca
VANECK GOLD MINERS	USD	37.29	0.58%	5.82%	0.95%	27.36%	NYSE Arca
ISHARES RUSSELL 2000 ETF	USD	196.29	1.19%	2.64%	9.99%	18.48%	NYSE Arca
SPDR GOLD SHARES	USD	176.74	1.05%	2.65%	0.14%	23.68%	NYSE Arca
ISHARES 20+ YEAR TREASURY BO	USD	156.80	-0.37%	-0.89%	-1.27%	15.74%	NASDAQ GM
INVESCO QQQ TRUST SERIES 1	USD	311.00	0.65%	2.80%	6.41%	46.28%	NASDAQ GM
ISHARES NASDAQ BIOTECHNOLOGY	USD	155.09	1.43%	3.52%	10.18%	28.69%	NASDAQ GM
ENERGY SELECT SECTOR SPDR	USD	40.07	-0.47%	-3.88%	9.84%	-33.26%	NYSE Arca
PROSHARES ULTRA VIX ST FUTUR	USD	10.68	2.11%	-5.32%	-12.82%	-17.15%	Cboe BZX
UNITED STATES OIL FUND LP	USD	33.16	1.28%	3.27%	14.86%	-67.64%	NYSE Arca
ISHARES MSCI BRAZIL ETF	USD	37.89	1.01%	1.34%	14.85%	-20.15%	NYSE Arca
SPDR S&P OIL & GAS EXP & PR	USD	60.41	0.00%	-5.16%	15.15%	-36.28%	NYSE Arca
UTILITIES SELECT SECTOR SPDR	USD	62.83	0.67%	1.11%	-4.00%	-2.77%	NYSE Arca
ISHARES US REAL ESTATE ETF	USD	85.62	0.98%	1.92%	-1.26%	-8.01%	NYSE Arca
SPDR S&P BIOTECH ETF	USD	146.65	1.47%	3.02%	15.71%	54.19%	NYSE Arca
ISHARES IBOXX MGMT INVEMT GRA	USD	137.26	-0.06%	0.09%	0.45%	7.27%	NYSE Arca
ISHARES JIP MORGAN USD EMERGI	USD	115.37	-0.02%	0.44%	1.31%	0.71%	NASDAQ GM
REAL ESTATE SELECT SECT SPDR	USD	37.08	1.17%	2.29%	-1.83%	-4.11%	NYSE Arca
ISHARES CHINA LARGE-CAP ETF	USD	45.83	0.64%	-1.59%	-3.23%	5.04%	NYSE Arca
CONSUMER STAPLES SPDR	USD	67.78	0.64%	0.91%	0.16%	7.62%	NYSE Arca
VANECK JR GOLD MINERS	USD	55.64	4.45%	8.02%	4.86%	31.66%	NYSE Arca
SPDR BBG BARC HIGH YIELD BND	USD	108.45	0.17%	0.28%	1.23%	-1.00%	NYSE Arca
VANGUARD REAL ESTATE ETF	USD	86.67	0.97%	2.60%	0.29%	-6.60%	NYSE Arca
GRAYSCALE BITCOIN TRUST BTC	USD	28.25	9.45%	31.58%	40.13%	244.93%	OTC US



Source: Bloomberg

Capital Market Laboratory Coordinator: Economist Bruno Bellido  
Collaboration: Piero Best, Luis Davila, Laura Delgado and Alonso Hernandez  
email: pulsobursatil@ulima.edu.pe  
facebook: www.facebook.com/pulsobursatil.ul

# LIMA

## Stocks

Ticker	Currency	Price	1D*	5D*	30D*	YTD*	Frequency	Volume (US\$)	Beta	Dividend Yield (%)	Price Earning	Market Cap. (M US\$)	Economic Sector*	Index Weight
▲ ALICORC1 PE**	S/.	7.16	0.42%	2.18%	13.99%	7.06%	100.00%	1,478,620	0.72	3.49	16.47	1,705.06	Industrial	3.53%
▲ ATACOB1 PE**	S/.	0.13	0.00%	-7.14%	4.84%	-21.21%	47.37%	33,618	1.05	0.00	-	34.23	Mining	1.02%
▲ BACKUS1 PE**	S/.	20.00	0.96%	-0.74%	2.56%	-29.82%	78.95%	11,364	0.50	3.27	9.05	7,636.75	Industrial	0.82%
▼ BAP PE**	US\$	162.00	-0.36%	-1.22%	21.86%	-23.83%	100.00%	2,069,258	1.61	5.43	-	15,289.94	Diverse	5.82%
▲ BVN PE**	US\$	12.90	2.95%	1.42%	11.11%	-15.69%	94.74%	694,901	1.32	0.20	-	3,555.69	Mining	5.88%
- CASAGRC1 PE**	S/.	5.50	0.00%	-4.68%	8.27%	81.52%	84.21%	15,034	0.59	0.00	9.87	129.10	Agricultural	1.31%
▼ BBVAC1 PE**	S/.	2.23	-0.89%	-3.04%	4.69%	-27.88%	100.00%	80,563	0.78	3.87	11.61	4,057.31	Finance	2.85%
- CORARE1 PE**	S/.	0.91	0.00%	-4.21%	5.81%	0.00%	89.47%	39,594	0.57	7.67	6.47	373.78	Industrial	1.72%
▼ CPACASC1 PE**	S/.	5.50	-1.79%	-5.17%	-4.35%	-10.57%	94.74%	126,163	0.55	4.18	17.74	655.07	Industrial	2.38%
▲ CVERDEC1 PE**	US\$	21.50	2.38%	0.47%	16.22%	11.40%	100.00%	105,286	0.67	0.00	34.95	7,526.20	Mining	5.25%
▼ ENGEPEC1 PE**	S/.	2.01	-0.50%	-0.50%	3.08%	-12.61%	52.63%	29,486	0.48	12.55	10.10	1,590.00	Public Services	1.44%
- ENDISPC1**	S/.	5.35	0.00%	0.38%	5.94%	-27.21%	68.42%	6,507	0.46	0.38	10.10	951.99	Public Services	0.98%
▲ FERREYC1 PE**	S/.	1.77	0.57%	0.57%	3.51%	-19.18%	100.00%	40,067	0.58	4.33	35.53	481.23	Diverse	4.90%
▲ AENZAC1 PE**	S/.	1.75	2.34%	-1.69%	10.76%	2.94%	100.00%	96,197	0.77	0.00	-	425.20	Diverse	4.05%
- IFS PE**	US\$	31.20	0.00%	-0.95%	24.80%	-23.72%	89.47%	157	1.35	0.00	30.94	3,601.97	Diverse	7.22%
▼ INRETC1 PE**	US\$	35.60	-1.11%	-1.66%	4.09%	-1.11%	100.00%	420,850	0.58	1.58	28.63	3,659.94	Diverse	5.28%
▲ LUSURC1 PE**	S/.	26.50	1.18%	-0.38%	1.96%	2.91%	89.47%	2,080,587	0.51	3.77	26.01	3,595.89	Public Services	1.81%
- MINSUR1 PE**	S/.	1.81	0.00%	-2.16%	9.70%	16.03%	84.21%	20,429	0.75	0.00	-	1,454.11	Mining	3.09%
▼ PML PE**	US\$	0.10	-4.04%	-5.00%	7.95%	69.64%	63.16%	2,890	1.24	0.00	-	25.10	Mining	2.12%
▲ RELAPAC1 PE**	S/.	0.07	3.13%	0.00%	-2.94%	-46.34%	94.74%	6,734	0.53	0.00	-	153.00	Industrial	2.12%
▲ SCCO PE**	US\$	62.95	0.88%	6.59%	12.29%	48.36%	89.47%	196,587	0.79	2.38	36.67	48,664.96	Mining	2.14%
▼ SIDERC1 PE**	S/.	0.83	-2.35%	-6.74%	9.21%	-6.74%	89.47%	90,819	0.85	41.23	9.86	284.00	Industrial	1.43%
▲ TV PE**	US\$	0.16	2.56%	1.91%	25.98%	-7.51%	84.21%	14,528	1.47	0.00	-	158.25	Mining	2.93%
- UNACEMC1 PE**	S/.	1.55	0.00%	-0.64%	9.93%	-22.50%	94.74%	71,121	0.76	1.68	42.62	785.29	Industrial	3.00%
▲ VOLCABC1 PE**	S/.	0.47	5.86%	4.44%	26.34%	5.62%	100.00%	321,609	0.82	0.00	-	1,822.03	Mining	5.90%
▼ NEXAPEC1 PE**	S/.	2.75	-1.79%	-1.79%	5.77%	-20.29%	52.63%	4,023	0.99	0.00	-	1,013.31	Mining	1.56%

Quantity of shares: 26  
Source: Bloomberg, Economática  
\* Bloomberg Industry Classification System  
\*\* PER is used in the stock market and original currency of the instrument  
\*Legend: Variation 1D: 1 Day; 5D: 5 Days; 1M: 1 Month; YTD: Var.% 12/31/19 to date

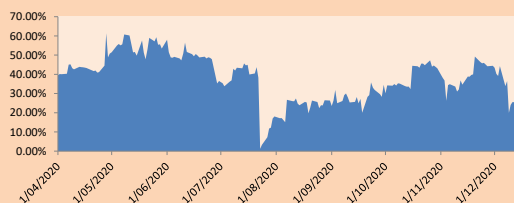
### Sectorial Indices

	Close	1D*	5D*	30D*	YTD*	Beta
▲ S&P/BVLMining	383.81	1.67%	3.91%	12.01%	25.98%	0.93
▼ S&P/BVLConsumer	1,041.09	-0.33%	-1.76%	3.03%	-8.69%	0.37
▲ S&P/BVLIndustrials	192.98	0.22%	-1.17%	6.63%	-8.59%	0.48
▼ S&P/BVLFinancials	1,034.48	-0.33%	-1.42%	20.84%	-12.30%	1.66
▲ S&P/BVLConstruction	211.53	0.06%	-1.84%	8.00%	-6.66%	0.49
▲ S&P/BVLPublicSvcs	626.17	0.91%	0.77%	3.37%	-3.89%	0.09
▲ S&P/BVLElectricUtil	611.30	0.91%	0.77%	3.37%	-3.89%	0.09

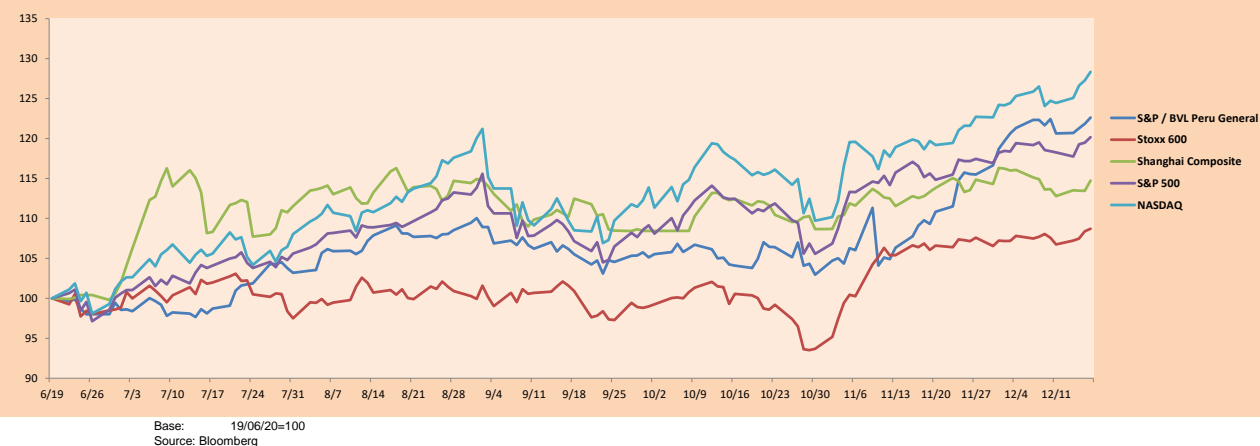
S&P/BVLConstructionTRPEN

\*Legend: Variation 1D: 1 Day; 5D: 5 Days; 1M: 1 Month; YTD: Var.% 12/31/19 to date

Correlation Graph of Returns of Mining Index against Metallic Index of London (3 months)



### Indices (6 months)



Capital Market Laboratory Coordinator: Economist Bruno Bellido  
Collaboration: Piero Best, Luis Davila, Laura Delgado and Alonso Hernández  
email: pulsohorsatil@ulima.edu.pe  
facebook: www.facebook.com/pulsohorsatil.ul

## SOVEREIGN RATING

### RISK RATINGS

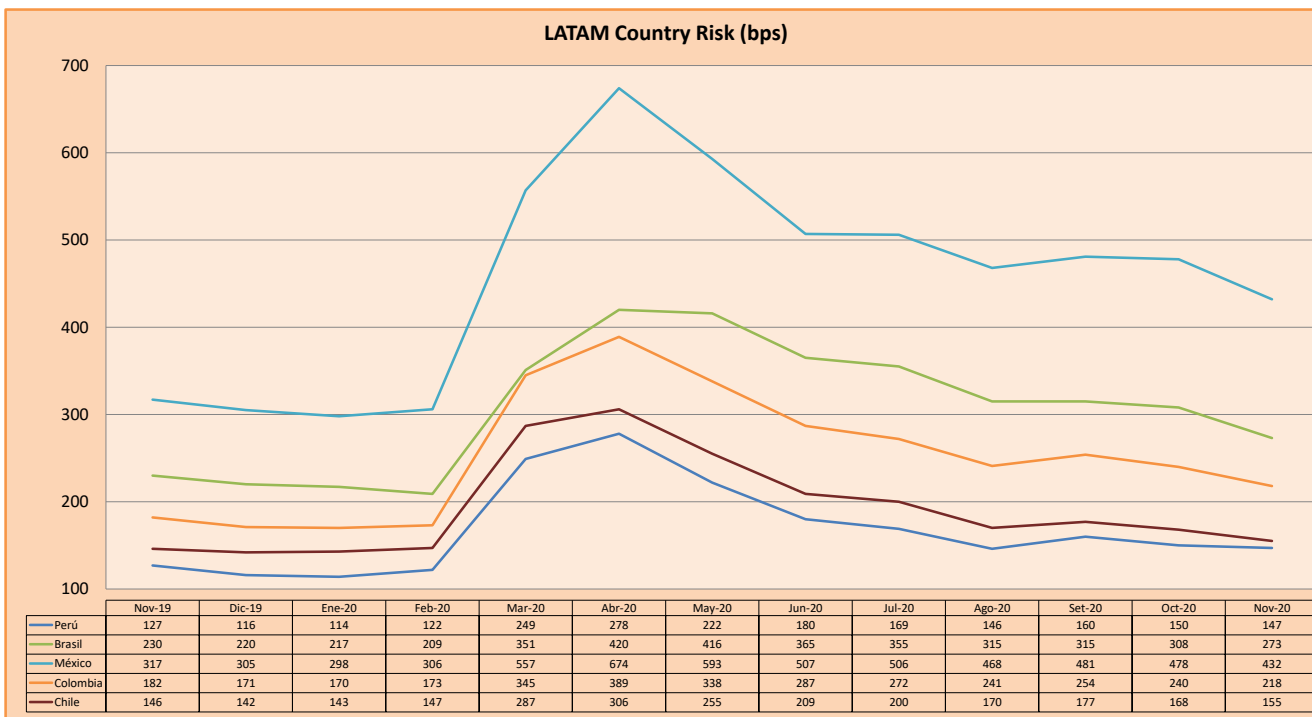
Moody's	S&P	Fitch	
Aaa	AAA	AAA	Prime
Aa1	AA+	AA+	High credit quality
Aa2	AA	AA	
Aa3	AA-	AA-	
A1	A+	A+	Medium-high grade, with low credit risk
A2	A	A	
A3	A-	A-	
Baa1	BBB+	BBB+	Moderate Credit Risk
Baa2	BBB	BBB	
Baa3	BBB-	BBB-	
Ba1	BB+	BB+	It has speculative elements and it is subject to substantial credit risk
Ba2	BB	BB	
Ba3	BB-	BB-	
B1	B+	B+	It is considered speculative and it has high credit risk
B2	B	B	
B3	B-	B-	
Caa1	CCC+		Bad credit conditions and it is subject to high credit risk
Caa2	CCC		
Caa3	CCC-		
Ca	CC	CCC	Very close to default or in default
	C		
C	D	DDD DD D	

Source: Bloomberg

Latin America Credit Rating			
Clasificadora de riesgo			
Country	Moody's	Fitch	S&P
Peru	A3	BBB+	BBB+
México	Ba2	BB-	BB-
Venezuela	C	WD	SD
Brazil	Ba2	BB-	BB-
Colombia	Baa2	BBB-	BBB-
Chile	A1	A-	A+
Argentina	Ca	WD	CCC+
Panama	Baa1	BBB	BBB

Source: Bloomberg

### LATAM Country Risk (bps)



Source: BCRP

Capital Market Laboratory Coordinator: Economist Bruno Bellido  
Collaboration: Piero Best, Luis Davila, Laura Delgado and Alonso Hernández  
email: [pulsobursatil@ulima.edu.pe](mailto:pulsobursatil@ulima.edu.pe)  
facebook: [www.facebook.com/pulsobursatil.ul](https://www.facebook.com/pulsobursatil.ul)