

PULSO BURSÁTIL

FACULTAD DE CIENCIAS EMPRESARIALES Y ECONÓMICAS
CARRERA DE ECONOMÍA
LABORATORIO DE MERCADO DE CAPITALES

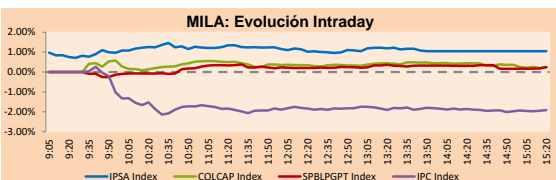


MILA

Lima, January 19, 2021

Main Indexes	Close	1 D	5 D	1 M	YTD	Cap. Burs. (US\$ bill)
▲ IPSA (Chile)	4,669.74	0.99%	1.51%	10.90%	11.79%	123.77
▲ IGPA (Chile)	23,438.85	1.00%	1.82%	11.30%	11.57%	153.10
▲ COLSC (Colombia)	1,084.57	0.30%	0.66%	4.60%	2.42%	5.87
▲ COLCAP (Colombia)	1,459.41	0.34%	-0.16%	2.31%	1.50%	88.93
▲ S&P/BVL (Perú)*	21,561.72	0.47%	-0.26%	4.01%	3.55%	112.53
▲ S&P/BVL SEL (Perú)	583.41	0.90%	0.75%	7.90%	5.80%	93.06
▲ S&P/BVL LIMA 25	26,932.74	0.66%	1.14%	7.59%	6.88%	111.62
▼ IPC (México)	45,495.41	-2.07%	-0.99%	3.70%	3.24%	296.87
▲ S&P MILA 40	556.35	0.32%	-0.73%	4.95%	4.06%	5,840.13

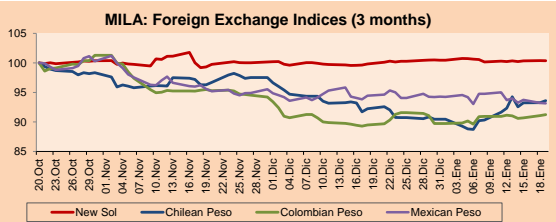
*Legend: Variation 1D: 1 day; 5D: 5 days; 1M: 1 Month; YTD: Var% 12/31/19 to date



Source: Bloomberg

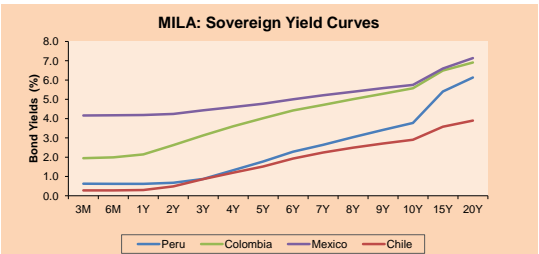
Currency	Price	1D*	5D*	30 D*	YTD*
▼ New Sol (PEN)	3,6145	-0.01%	0.12%	0.53%	-0.10%
▲ Chilean Peso (CLP)	736.58	0.37%	1.38%	1.47%	3.48%
▲ Colombian Peso (COP)	3,487.04	0.19%	0.10%	1.96%	1.67%
▼ Mexican Peso (MXN)	19.67	-0.08%	-0.60%	-1.38%	-1.22%

*Legend: Variation 1D: 1 day; 5D: 5 days; 1M: 1 Month; YTD: Var% 12/31/19 to date



Base: 2010/20=100
Source: Bloomberg

Fixed Income	Currency	Price	Bid Yield (%)	Ask Yield (%)	Duration
PERU 7.35 07/21/25	USD	127.23	1.18	1.07	3.86
PERU 4.125 08/25/27	USD	116.128	1.58	1.50	5.83
PERU 8.75 11/21/33	USD	168.16	2.54	2.47	9.06
PERU 6.55 03/14/37	USD	148.958	2.80	2.74	10.74
PERU 5.625 11/18/2050	USD	151.675	3.02	2.97	17.53
CHILE 2.25 10/30/22	USD	103.425	0.43	0.20	1.74
CHILE 3.125 01/21/26	USD	110.582	1.01	0.90	4.62
CHILE 3.625 10/30/42	USD	112.786	2.86	2.81	15.77
COLOM 11.85 03/09/28	USD	164.543	2.18	1.96	5.35
COLOM 10.375 01/28/33	USD	160.953	4.05	3.86	7.87
COLOM 7.375 09/18/37	USD	140.506	4.06	3.98	10.71
COLOM 6.125 01/18/41	USD	128.175	4.08	4.03	12.78
MEX 4 10/02/23	USD	128.175	4.081	4.028	12.78
MEX5.55 01/45	USD	125.724	3.91	3.87	14.37



Source: Bloomberg

Equity

Largest gains	Exchange	Currency	Price	▲ %
ITAU CORPBANCA	Chile	CLP	2.60	4.42
VOLCAN CIA MIN-B	Peru	PEN	0.55	3.77
CENCOSUD SHOPPIN	Chile	CLP	1272.60	3.46
PARQUE ARAUCO	Chile	CLP	1175.00	3.39
CEMEX SAB-CPO	Mexico	MXN	13.07	3.16

Per Turnover	Exchange	Amount (US\$)
WALMART DE MEXIC	Mexico	94,572,873
AMERICA MOVIL-L	Mexico	48,566,821
GRUPO F BANORT-O	Mexico	34,024,282
GRUPO MEXICO-B	Mexico	30,159,984
FOMENTO ECON-UBD	Mexico	28,163,920

Largest losses	Exchange	Currency	Price	▼ %
WALMART DE MEXIC	Mexico	MXN	63.99	-5.37
INDUSTRIAS PENOL	Mexico	MXN	323.43	-4.67
ARCA CONTINENTAL	Mexico	MXN	97	-4.09
GRUPO FIN INB-O	Mexico	MXN	20.04	-4.02
GRUMA SAB-B	Mexico	MXN	224.03	-3.65

Per Volume	Exchange	Volume
ITAU CORPBANCA	Chile	366,274,887
BANCO SANTANDER	Chile	207,294,229
ENEL AMERICAS SA	Chile	97,159,899
BANCO DE CHILE	Chile	85,659,454
AMERICA MOVIL-L	Mexico	67,814,397

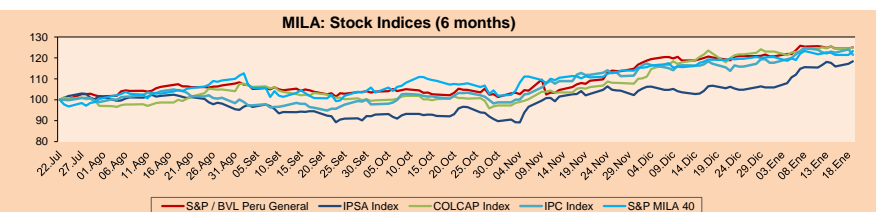
MILA

Peru: The General Index of the Lima Stock Exchange ended today's session with a positive result of +0.47%. The index maintains an annual accumulated positive trend of +3.55% in local currency, while the adjusted return in dollars amounts to +3.65%. Then, the S&P / BVL Peru SEL varied by +0.90% while the S&P / BVL LIMA 25 by +0.66%. The PEN spot reached S / 3.6145. Owner: Petropur receives authorization to issue bonds for up to US \$1,000M to finance the Talara Refinery

Chile: The IPSA index ended the day with a positive return of +0.99%. The sectors that benefited the most during the session were Real Estate (+3.30%) and Energy (+3.00%). The stocks with the best results were Itau CorpBanca Chile SA (+4.42%) and Cencosud Shopping SA (+3.46%). Head: Chilean Codeco approves two projects for more than US \$1,200M and plans to generate 2,000 new jobs

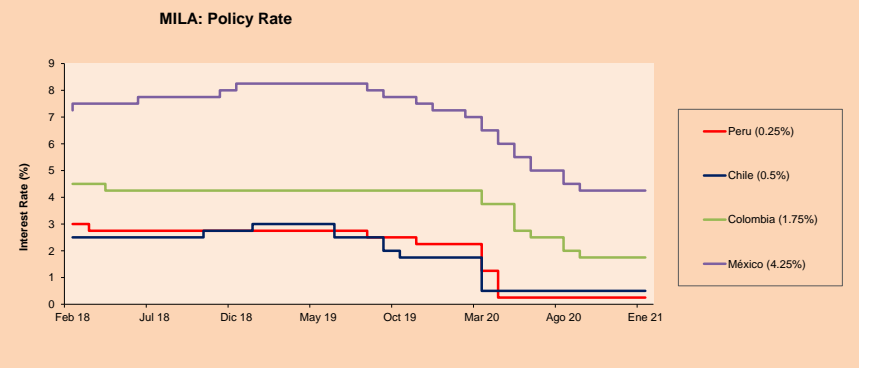
Colombia: The COLCAP index had a positive result of +0.34%. The sectors with the best returns on the day were Utilities (+1.56%) and Materials (+1.14%). The securities with the best performance were Mineros SA (+4.50%) and Grupo Energia Bogota SA (+2.07%). Headline: 'Interest rates will remain stable this year': Asobancaria

Mexico: The IPC index closed the session with a negative result of -2.07%. The sectors that fell the most during the day were Basic Consumer Products (-3.54%) and Health Care (-2.98%). The worst performing stocks were Wal-Mart de Mexico SAB de CV (-5.37%) and Industrias Penoles SAB de CV (-4.67%). Headline: Mexico's economy contracts 5.4% year-on-year in December, according to preliminary estimate



Base: 23/07/20=100
Source: Bloomberg

ETFs	Curr.	Close	1D	5D	30 D	YTD	Exchange
▲ iShares MSCI All Peru Caped Index Fund	USD	35.26	1.00%	-1.92%	1.26%	1.67%	NYSE Arca
▲ iShares MSCI All Chile Caped Index Fund	USD	31.85	0.22%	-0.99%	7.17%	5.43%	Cboe BZX
▼ Global X MSCI Colombia	USD	11.38	-0.26%	-0.22%	0.09%	0.18%	NYSE Arca
▲ iShares MSCI Mexico Capped	USD	44.16	-0.72%	-0.99%	3.69%	2.72%	NYSE Arca
▲ iShares MSCI Emerging Markets	USD	55.25	1.66%	1.38%	8.35%	6.93%	NYSE Arca
▲ Vanguard FTSE Emerging Markets	USD	53.45	1.81%	1.96%	6.84%	6.67%	NYSE Arca
▲ iShares Core MSCI Emerging Markets	USD	66.07	1.44%	1.23%	8.06%	6.50%	NYSE Arca
▲ iShares JP Morgan Emerging Markets Bonds	USD	63.19	0.72%	0.22%	4.90%	3.45%	Cboe BZX
▲ Morgan Stanley Emerging Markets Domestic	USD	6.25	0.64%	0.48%	-1.42%	-0.64%	New York



Source: Bloomberg

Capital Market Laboratory Coordinator: Economist Bruno Bellido
Collaboration: Piero Best, Maria Camarena, Alonso Stephen Hernández and Adrian Paredes
email: pulsobursatil@ulima.edu.pe
facebook: www.facebook.com/pulsobursatil.ul

The content of this document is just for informational purposes. The information and opinions expressed should not be considered as recommendations for future decisions. Under any circumstances, the Capital Market Laboratory of University of Lima will be responsible for the use of the statements in this document.

LIMA

Stocks

Ticker	Currency	Price	1D*	5D*	30D*	YTD*	Frequency	Volume (US\$)	Beta	Dividend Yield (%)	Price Earning	Market Cap. (M US\$)	Economic Sector*	Index Weight
▲ ALICORC1 PE**	S/.	8.20	0.30%	0.66%	4.60%	2.42%	100.00%	1,442,140	0.78	3.05	18.86	1,934.03	Industrial	3.53%
▲ ATACOB1 PE**	S/.	0.14	0.00%	-4.76%	7.69%	1.45%	72.22%	1,227	1.07	0.00	-	36.60	Mining	1.02%
- BACKUS1 PE**	S/.	22.50	0.00%	-2.17%	12.50%	11.66%	83.33%	44,620	0.52	2.91	10.18	8,238.92	Industrial	0.82%
▲ BAP PE**	US\$	155.78	1.16%	-5.59%	-3.46%	-3.00%	100.00%	299,764	1.59	5.65	-	14,702.88	Diverse	5.82%
▼ BVN PE**	US\$	11.03	-0.72%	-0.09%	-13.90%	-8.08%	94.44%	170,144	1.31	0.00	-	3,040.25	Mining	5.88%
▼ CASAGRC1 PE**	S/.	5.40	-0.92%	-3.57%	-1.82%	13.68%	50.00%	8,504	0.64	4.18	9.70	125.84	Agricultural	1.31%
▲ BBVAC1 PE**	S/.	2.31	0.43%	0.43%	5.00%	6.45%	94.44%	23,822	0.77	3.74	12.02	4,172.74	Finance	2.85%
▲ CORARE1 PE**	S/.	0.86	-2.27%	-1.15%	-7.53%	-3.37%	83.33%	18,094	0.54	8.12	6.11	370.93	Industrial	1.72%
- CPACASC1 PE**	S/.	5.60	0.00%	0.00%	2.38%	5.66%	88.89%	38,993	0.58	4.11	18.06	719.11	Industrial	2.38%
- CVERDEC1 PE**	US\$	22.00	2.33%	0.00%	2.80%	5.16%	94.44%	225,123	0.75	0.00	35.76	7,701.23	Mining	5.25%
- ENGEPEC1 PE**	S/.	2.13	0.00%	2.40%	5.97%	6.50%	50.00%	10,311	0.49	0.00	10.70	1,672.86	Public Services	1.44%
▲ ENDISPC1**	S/.	5.50	0.18%	0.00%	2.80%	1.85%	61.11%	1,522	0.46	0.00	10.38	971.67	Public Services	0.98%
▲ FERREYC1 PE**	S/.	1.97	0.51%	3.68%	10.67%	13.22%	94.44%	575,714	0.66	3.89	26.59	531.77	Diverse	4.90%
- AENZAC1 PE**	S/.	1.72	0.00%	4.24%	1.18%	-1.15%	88.89%	394,013	0.74	0.00	-	414.91	Diverse	4.05%
▼ IFS PE**	US\$	34.70	-0.26%	1.76%	15.17%	12.15%	100.00%	13,711	1.35	5.04	34.67	4,006.04	Diverse	7.22%
▼ INRETC1 PE**	US\$	44.50	-0.45%	1.60%	25.35%	13.52%	100.00%	390,610	0.59	1.27	36.05	4,574.93	Diverse	5.28%
▲ LUSURC1 PE**	S/.	29.25	0.86%	14.26%	10.38%	14.71%	83.33%	394,362	0.51	3.41	28.70	3,940.61	Public Services	1.81%
- MINSUR1 PE**	S/.	2.05	1.99%	3.54%	13.26%	10.81%	77.78%	2,734	0.77	0.00	-	1,635.12	Mining	3.09%
- PML PE**	US\$	0.15	0.00%	2.84%	52.63%	36.79%	55.56%	2,809	1.41	0.00	-	38.31	Mining	2.12%
- RELAPAC1 PE**	S/.	0.07	0.00%	-1.41%	2.94%	1.45%	94.44%	2,808	0.52	0.00	-	161.11	Industrial	2.12%
▼ SCCO PE**	US\$	71.00	-0.06%	-0.93%	12.43%	7.74%	83.33%	98,084	0.81	2.11	41.36	54,888.20	Mining	2.14%
▲ SIDERC1 PE**	S/.	0.83	1.22%	-2.35%	-2.35%	-2.35%	83.33%	10,741	0.84	41.23	9.86	281.97	Industrial	1.43%
▼ TV PE**	US\$	0.19	-2.11%	0.54%	16.25%	26.53%	88.89%	5,466	1.50	0.00	-	183.97	Mining	2.93%
▲ UNACEMC1 PE**	S/.	1.69	2.42%	6.96%	13.42%	9.03%	83.33%	4,831,941	0.81	0.77	46.47	850.09	Industrial	3.00%
▲ VOLCABC1 PE**	S/.	0.55	3.77%	1.85%	15.06%	5.77%	100.00%	561,023	0.87	0.00	-	1,750.08	Mining	5.90%
- NEXAPEC1 PE**	S/.	3.05	0.00%	0.00%	10.91%	7.77%	50.00%	8,800	1.01	0.00	-	1,115.95	Mining	1.56%

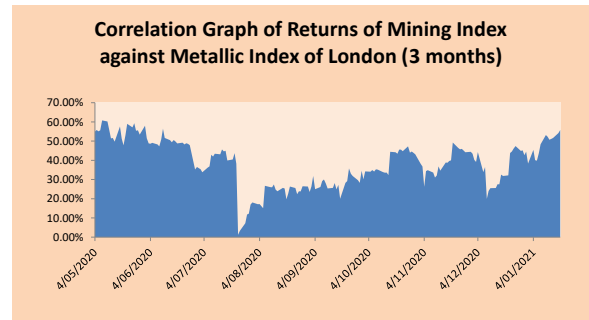
Quantity of shares: 26
Source: Bloomberg, Economática
* Bloomberg Industry Classification System
** PER is used in the stock market and original currency of the instrument
*Legend: Variation 1D: 1 Day; 5D: 5 Days; 1M: 1 Month; YTD: Var.% 12/31/19 to date

Sectorial Indices

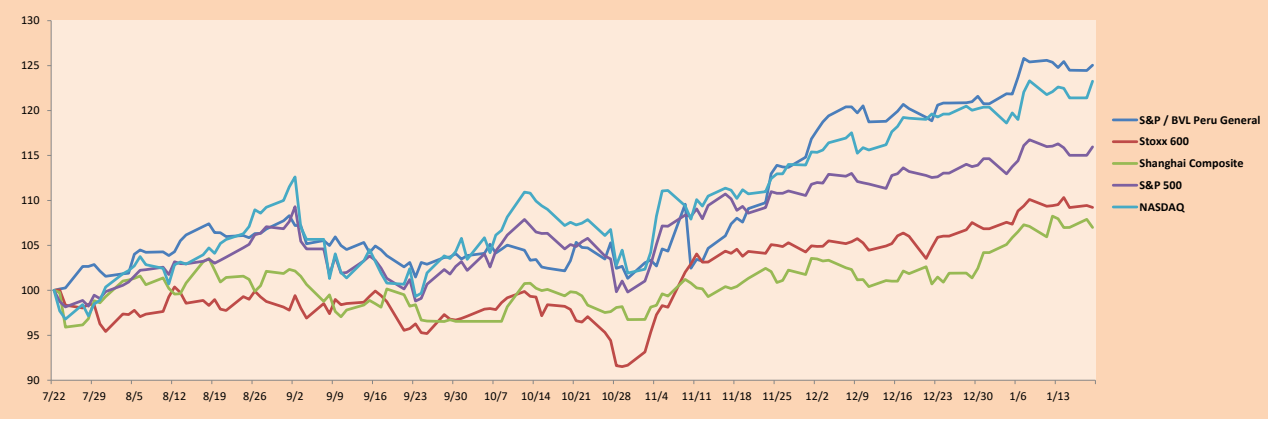
	Close	1D*	5D*	30D*	YTD*	Beta
▲ S&P/BVLMining	403.04	0.04%	-0.29%	4.89%	3.36%	0.92
▲ S&P/BVLConsumer	1,236.90	0.48%	0.62%	18.62%	13.62%	0.38
▲ S&P/BVLIndustrials	203.10	0.68%	3.33%	6.57%	6.58%	0.53
▲ S&P/BVLFinancials	1,018.63	0.96%	-4.54%	-0.97%	-1.48%	1.63
▲ S&P/BVLConstruction	217.56	0.76%	3.22%	4.95%	4.04%	0.51
▲ S&P/BVLPublicSvcs	664.77	0.38%	6.15%	6.16%	8.25%	0.12
▲ S&P/BVLElectricUtil	648.98	0.38%	6.15%	6.16%	8.25%	0.12

S&P/BVLConstructionTRPEN

*Legend: Variation 1D: 1 Day; 5D: 5 Days; 1M: 1 Month; YTD: Var.% 12/31/19 to date



Indices (6 months)



Base: 22/07/20=100
Source: Bloomberg

Capital Market Laboratory Coordinator: Economist Bruno Bellido
Collaboration: Piero Best, Maria Camarena, Alonso Stephen Hernández and Adrian Paredes
email: pulsobursatil@ulima.edu.pe
facebook: www.facebook.com/pulsobursatil.ul

SOVEREIGN RATING

RISK RATINGS

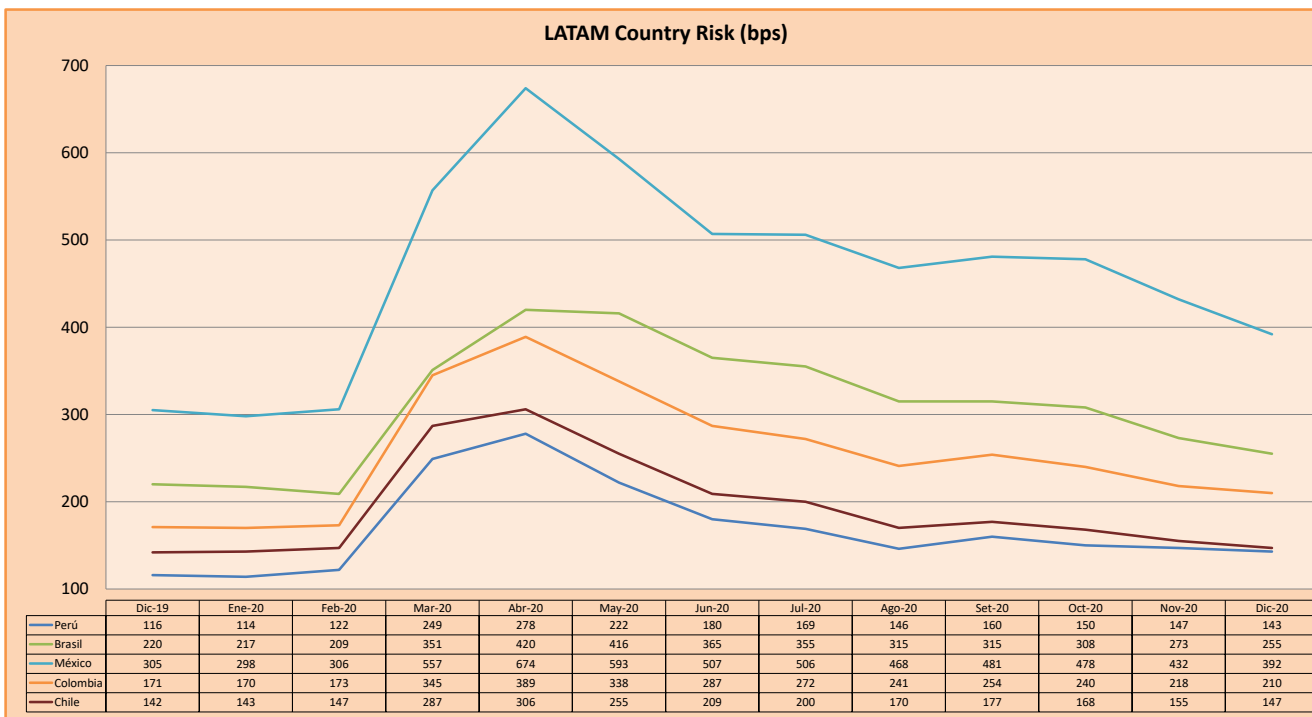
Moody's	S&P	Fitch	
Aaa	AAA	AAA	Prime
Aa1	AA+	AA+	High credit quality
Aa2	AA	AA	
Aa3	AA-	AA-	
A1	A+	A+	Medium-high grade, with low credit risk
A2	A	A	
A3	A-	A-	
Baa1	BBB+	BBB+	Moderate Credit Risk
Baa2	BBB	BBB	
Baa3	BBB-	BBB-	
Ba1	BB+	BB+	It has speculative elements and it is subject to substantial credit risk
Ba2	BB	BB	
Ba3	BB-	BB-	
B1	B+	B+	It is considered speculative and it has high credit risk
B2	B	B	
B3	B-	B-	
Caa1	CCC+		Bad credit conditions and it is subject to high credit risk
Caa2	CCC		
Caa3	CCC-	CCC	
Ca	C		Very close to default or in default
		DDD	
C	D	DD D	

Source: Bloomberg

Latin America Credit Rating			
Clasificadora de riesgo			
Country	Moody's	Fitch	S&P
Peru	A3	BBB+	BBB+
México	Ba2	BB-	BB-
Venezuela	C	WD	SD
Brazil	Ba2	BB-	BB-
Colombia	Baa2	BBB-	BBB-
Chile	A1	A-	A+
Argentina	Ca	WD	CCC+
Panama	Baa1	BBB	BBB

Source: Bloomberg

LATAM Country Risk (bps)



Source: BCRP

Capital Market Laboratory Coordinator: Economist Bruno Bellido
Collaboration: Piero Best, Maria Camarena, Alonso Stephen Hernández and Adrian Paredes
email: pulsobursatil@ulima.edu.pe
facebook: www.facebook.com/pulsobursatil.ul