

PULSO BURSÁTIL

FACULTAD DE CIENCIAS EMPRESARIALES Y ECONÓMICAS
CARRERA DE ECONOMÍA
LABORATORIO DE MERCADO DE CAPITALES

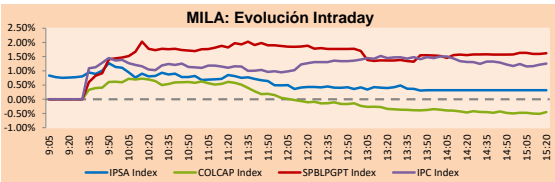


MILA

Lima, February 16, 2021

Main Indexes	Close	1 D	5 D	1 M	YTD	Cap. Burs. (US\$ bill)
▲ IPSA (Chile)	4,653.07	0.71%	2.43%	1.77%	11.39%	126.18
▲ IGPA (Chile)	23,461.04	0.62%	2.42%	2.13%	11.68%	157.45
▲ COLSC (Colombia)	1,075.68	0.03%	1.99%	0.02%	1.58%	5.96
▼ COLCAP (Colombia)	1,363.17	-0.45%	-1.24%	-6.16%	-5.20%	82.23
▲ S&P/BVL (Perú)*	22,597.00	1.64%	1.28%	5.27%	8.52%	117.06
▲ S&P/BVL SEL (Perú)	600.31	0.79%	0.40%	3.95%	8.87%	95.42
▲ S&P/BVL LIMA 25	29,394.04	0.84%	1.03%	9.88%	16.65%	116.07
▲ IPC (México)	44,698.59	1.23%	-0.72%	-2.60%	1.43%	280.46
▲ S&P MILA 40	553.67	0.38%	2.74%	0.38%	3.56%	5,652.60

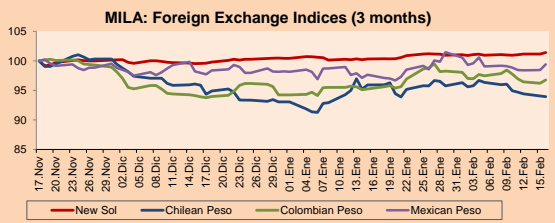
*Legend: Variation 1D: 1 day; 5D: 5 days; 1M: 1 Month; YTD: Var% 12/31/20 to date



Source: Bloomberg

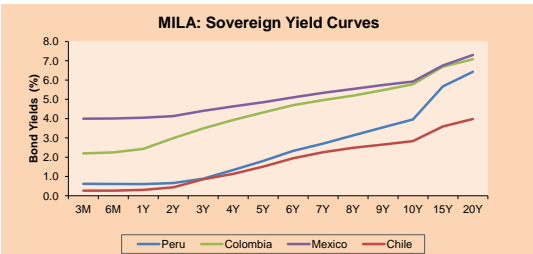
Currency	Price	1D*	5D*	30 D*	YTD*
▲ New Sol (PEN)	3,653.33	0.24%	0.40%	1.11%	0.98%
▼ Chilean Peso (CLP)	718.61	-0.11%	-2.20%	-2.07%	0.96%
▲ Colombian Peso (COP)	3,521.39	0.56%	-1.71%	1.61%	2.67%
▲ Mexican Peso (MXN)	20.15	0.95%	0.29%	1.80%	1.21%

*Legend: Variation 1D: 1 day; 5D: 5 days; 1M: 1 Month; YTD: Var% 12/31/20 to date



Base: 17/11/20=100
Source: Bloomberg

Fixed Income	Currency	Price	Bid Yield (%)	Ask Yield (%)	Duration
PERU 7.35 07/21/25	USD	126.703	1.18	1.11	3.90
PERU 4.125 08/25/27	USD	115.522	1.64	1.58	5.76
PERU 8.75 11/21/33	USD	163.555	2.82	2.77	8.97
PERU 6.55 03/14/37	USD	144.407	3.06	3.02	10.65
PERU 5.625 11/18/2050	USD	144.903	3.26	3.25	17.31
CHILE 2.25 10/30/22	USD	103.335	0.41	0.16	1.66
CHILE 3.125 01/21/26	USD	110.308	1.03	0.93	4.61
CHILE 3.625 10/30/42	USD	110.394	2.98	2.96	15.71
COLOM 11.85 03/09/28	USD	161.641	2.44	2.22	5.27
COLOM 10.375 01/28/33	USD	161.115	4.03	3.80	8.10
COLOM 7.375 09/18/37	USD	138.891	4.15	4.08	10.66
COLOM 6.125 01/18/41	USD	126.618	4.17	4.13	12.74
MEX 4 10/02/23	USD	126.618	4.166	4.13	12.74
MEX5.55 01/45	USD	122.648	4.09	4.04	14.62



Source: Bloomberg

Equity

Largest gains	Exchange	Currency	Price	▲%
CENCOSUD SHOPPIN	Chile	CLP	1267.50	5.52
FOMENTO ECON-UBD	Mexico	MXN	143.36	4.51
GRUPO TELEV-CPO	Mexico	MXN	34.87	4.09
GRUPO MEXICO-B	Mexico	MXN	92.60	3.53
COCA-COLA FEMSA	Mexico	MXN	91.08	3.43

Per Turnover	Exchange	Amount (US\$)
GRUPO MEXICO-B	Mexico	26,589,488
CEMEX SAB-CPO	Mexico	26,020,129
GRUPO F BANORT-O	Mexico	24,315,655
BANCO SANTANDER	Chile	20,664,742
SOQUIMICH-B	Chile	20,501,134

Largest losses	Exchange	Currency	Price	▼%
VOLCAN CIA MIN-B	Peru	PEN	0.78	-2.50
CMPC	Chile	CLP	2150	-2.14
GRUPO NUTRESA SA	Colombia	COP	23420	-1.97
GRUPO FIN INB-O	Mexico	MXN	19.53	-1.96
ENGIE ENERGIA CH	Chile	CLP	864	-1.82

Per Volume	Exchange	Volume
BANCO SANTANDER	Chile	348,492,923
ITAU CORPBANCA	Chile	209,380,417
BANCO DE CHILE	Chile	110,504,874
ENEL AMERICAS SA	Chile	77,558,988
ENEL CHILE SA	Chile	60,586,761

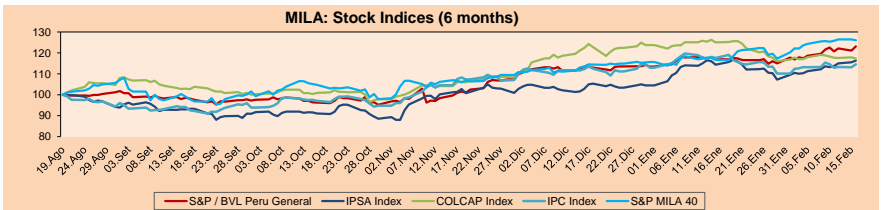
MILA

Peru: The General Index of the BVL ended today's session with a positive result of +1.64%. The index maintains an annual accumulated positive trend of +8.52% in local currency, while the adjusted return in dollars amounts to +7.48%. Then, the S&P / BVL Peru SEL varied by +0.79% while the S&P / BVL LIMA 25 by +0.84%. The PEN spot reached 5 / 3.6533. Headline: Peruvian government seeks to prevent Sinopharm vaccine scandal from weakening relations with China

Chile: The IPSA index ended the day with a positive return of +0.71%. The sectors that benefited the most from the session were Industrial (+5.66%) and Real Estate (+2.73%). The shares with the best performance were Compañía Sud Americana de Vapo (+5.66%) and Cencosud Shopping SA (+5.52%). Headline: Telefónica advances negotiations for the sale of data centers to Nabix (Asterion)

Colombia: The COLCAP index closed today with a negative return of -0.45%. The sectors most affected during the session were First Needs Products (-1.92%) and Non-Basic Consumer Products (-1.61%). The worst performing stocks were Grupo Nutresa SA (-1.97%) and Organización Terpel SA (-1.61%). Headline: Tax collection in Colombia falls 5.4% in January to US \$ 5,250M

Mexico: The IPC index closed the day with a positive return of +1.23%. The sectors with the highest performance in the day were Materials (+1.93%) and Basic Products (+1.88%). The stocks with the best performance were Fomento Economico Mexico SAB (+4.51%) and Grupo Televisa SA (+4.09%). Headline: Mexican subsidiary of AB InBev sus Constellation Brands for failing to use the Corona trademark

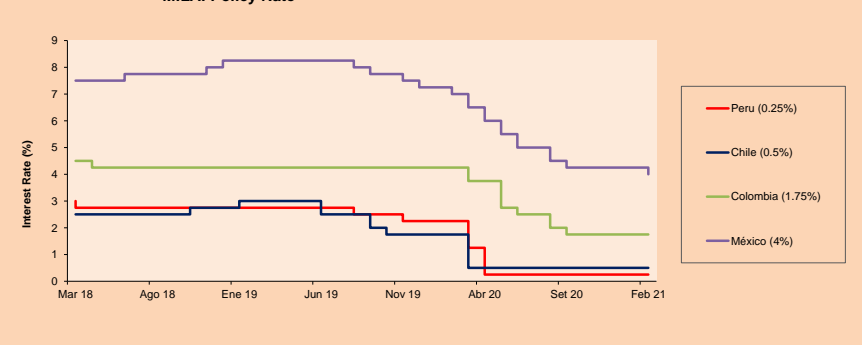


Base: 20/08/20=100
Source: Bloomberg

ETFs

ETFs	Curr.	Close	1D	5D	30 D	YTD	Exchange
▲ iShares MSCI All Peru Caped Index Fund	USD	37.71	0.13%	0.83%	8.02%	8.74%	NYSE Arca
▲ iShares MSCI All Chile Caped Index Fund	USD	32.87	1.39%	3.95%	3.43%	8.81%	Cboe BZX
▼ Global X MSCI Colombia	USD	10.59	-0.19%	0.76%	-7.19%	-6.78%	NYSE Arca
▲ iShares MSCI Mexico Capped	USD	42.42	-0.21%	-1.16%	-4.63%	-1.33%	NYSE Arca
▲ iShares MSCI Emerging Markets	USD	57.94	0.24%	1.76%	6.61%	12.13%	NYSE Arca
▲ Vanguard FTSE Emerging Markets	USD	56.35	0.28%	1.73%	7.33%	12.45%	NYSE Arca
▲ iShares Core MSCI Emerging Markets	USD	69.46	0.27%	1.79%	6.65%	11.96%	NYSE Arca
▲ iShares JP Morgan Emerging Markets Bonds	USD	65.17	0.20%	1.32%	3.87%	6.70%	Cboe BZX
▼ Morgan Stanley Emerging Markets Domestic	USD	6.22	-0.64%	0.16%	0.16%	-1.11%	New York

MILA: Policy Rate



Source: Bloomberg

Capital Market Laboratory Coordinator: Economist Bruno Bellido
Collaboration: Piero Best, María Camarena, Alonso Stephen Hernández and Adrian Paredes
email: pulsobursatil@ulima.edu.pe
facebook: www.facebook.com/pulsobursatil.ul

The content of this document is just for informational purposes. The information and opinions expressed should not be considered as recommendations for future decisions. Under any circumstances, the Capital Market Laboratory of University of Lima will be responsible for the use of the statements in this document.

PULSO BURSÁTIL

FACULTAD DE CIENCIAS EMPRESARIALES Y ECONÓMICAS
CARRERA DE ECONOMÍA
LABORATORIO DE MERCADO DE CAPITALES



WORLD

Main Indices	Close	1 D*	5 D*	1 M*	YTD*	Market Cap. (US\$ Mill.)
▲ Dow Jones (USA)	31,522.75	0.20%	0.44%	2.30%	2.99%	9,895,626
▼ Standard & Poor's 500 (EEUU)	3,932.59	-0.06%	0.43%	4.36%	4.70%	34,759,603
▼ NASDAQ Composite (USA)	14,047.50	-0.34%	0.43%	8.07%	8.99%	22,958,949
▼ Stoxx EUROPE 600 (Europe)	419.20	-0.06%	2.14%	2.78%	5.05%	9,516,732
▼ DAX (Germany)	14,064.60	-0.32%	0.38%	2.01%	2.52%	1,055,010
▼ FTSE 100 (United Kingdom)	6,748.86	-0.11%	3.33%	0.20%	4.46%	1,403,989
▼ CAC 40 (France)	5,786.53	0.00%	1.67%	3.12%	4.24%	1,562,884
▼ IBEX 35 (Spain)	8,153.70	-0.61%	0.65%	-0.94%	0.99%	444,296
▲ MSCI AC Asia Pacific Index	220.63	0.53%	2.11%	5.76%	10.36%	27,830,845
▲ HANG SENG (Hong Kong)	30,746.86	1.90%	4.98%	7.60%	12.91%	4,740,353
▲ SHANGHAI SE Comp. (China)	3,655.09	1.43%	3.92%	3.50%	5.24%	6,332,718
▲ NIKKEI 225 (Japan)	30,467.75	1.28%	3.67%	6.56%	10.74%	4,131,092
▲ S&P / ASX 200 (Australia)	6,917.27	0.70%	1.41%	2.31%	4.30%	1,699,338
▲ KOSPI (South Korea)	3,163.25	1.23%	-0.72%	1.23%	8.72%	1,891,168

*Legend: Variation 1D: 1 Day; 5D: 5 Days; 1M: 1 Month; YTD: Var.% 12/31/20 to date

Equity

Germany (Stocks from DAX Index)

Largest gains	Curr.	Price	▲%	Exchange	Largest losses	Curr.	Price	▼%	Exchange
DBK GY	EUR	9.333	1.70	Xetra	EOAN GY	EUR	8.686	-1.70	Xetra
IFX GY	EUR	36.425	1.43	Xetra	RWE GY	EUR	33.37	-1.53	Xetra
VOW3 GY	EUR	163.18	0.59	Xetra	HEN3 GY	EUR	86.04	-1.40	Xetra
DPW GY	EUR	43	0.54	Xetra	CON GY	EUR	121.1	-1.30	Xetra

Europe (Stocks from STOXX EUROPE 600)

Largest gains	Curr.	Price	▲%	Exchange	Largest losses	Curr.	Price	▼%	Exchange
STMN SE	CHF	1170.5	4.98	SIX Swiss Ex	WIE AV	EUR	29.1	-1.36	Vienna
TSCO LN	Gbp	242.25	-0.86	Londres	SMDS LN	Gbp	396	-3.37	Londres
VALMT FH	EUR	27.98	1.75	Helsinki	ASSAB SS	SEK	221.2	-3.15	Stockholm
HSBA LN	Gbp	427.75	4.21	Londres	SSE LN	Gbp	1418.5	-3.04	Londres

Global Overview:

United States:

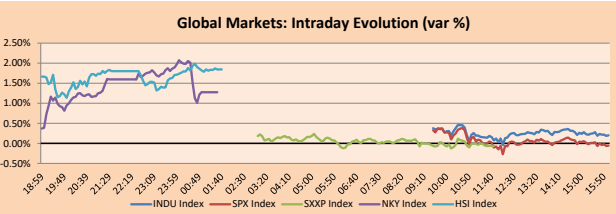
US markets ended the day with mixed results, with the S&P 500 and NASDAQ retreating from all-time highs and the Dow Jones setting a new closing record. President Joe Biden made his first official trip to Wisconsin, in order to present the economic relief bill to the people who secured victory in last year's presidential election. On the other hand, the yield on 10-year Treasury bonds rose above 1.30%, a level not seen since February 2020. According to CNBC, many on Wall Street believe that rising interest rates could make the high-flying stock market less attractive, while posing a threat to sectors such as technology. On the other hand, shares of cryptocurrency and blockchain-related companies rose during the day: bitcoin surpassed the US\$50,000 barrier, while Silvergate Capital Corp +8.33%, Riot Blockchain +20.74% and Marathon Patent Group +13.26%. Similarly, the price of oil jumped above US\$60 per barrel and reached its highest level since January 2020. Thus, the DJIA +0.20% rose; in contrast, NASDAQ -0.34% and S&P 500 -0.06% retreated.

Europe:

Major European markets ended today's session mixed amid investors' waning optimism about the global economic recovery and following advances in Japanese and Hong Kong stocks on European exchanges. In macroeconomic data, Eurozone GDP fell less than estimated for the final quarter of 2020 and employment rose from the previous three months despite confinements due to the COVID-19 pandemic. The main pan-European index closed slightly dragged down by the utilities +1.52% and communication services -0.89% sectors; despite the European mining index hitting a 10-year high in the session after Glencore shares rose +2.45%. In the UK, the FTSE closed lower even after the successful launch of vaccines and the easing of restrictions. On the other hand, in Germany, the DAX ended the session lower after a drop in total auto sales by 28% in January. Thus, Stoxx 600 -0.06%, FTSE -0.11%, CAC +0.00% and DAX -0.32% ended mixed.

Asia:

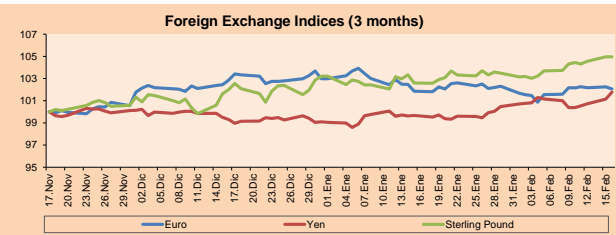
Asian markets closed the day with positive results, with Hong Kong leading the region, while market agents monitor the strength in the foreign market with optimism about the recovery of the global economy. The shares were boosted by expectations that the coronavirus would progressively be under control and by the anticipation of strong buying interest from Chinese investors when its markets resume trading on Thursday, according to Reuters. In Hong Kong, markets reopened higher, with film stocks soaring sharply, after Chinese box office revenues were reported to hit 6.77 billion yuan (US \$ 1.05 billion) in the week that started this month. This thanks to the celebration for the Lunar New Year, managing to exceed the past weekly high of 5.9 billion yuan in 2019, according to Reuters. In Japan, stocks reached a 30-year high, as a result of better expectations for the distribution of vaccines. In Australia, the RBA published meeting minutes, commenting that significant monetary support is necessary for a period of time. In individual stocks, IMAX China + 31.14% and Alibaba Pictures + 34.58%. Thus, the Hang Seng + 1.9%, Nikkei + 1.28%, S & P / ASX 200 + 0.7% and Kospi Composite + 0.52% closed higher, among other indices.



Source: Bloomberg

Currency	Price	1 D*	5 D*	1 M*	YTD*
▲ Euro	1.2106	-0.19%	-0.11%	0.20%	-0.90%
▲ Yen	106.0400	0.63%	1.39%	2.11%	2.70%
- Sterling Pound	1.3903	0.00%	0.62%	2.30%	1.70%
- Yuan	6.4583	0.00%	0.36%	-0.35%	-1.06%
▼ Hong Kong Dollar	7.7523	-0.01%	0.01%	-0.02%	-0.01%
▼ Brazilian Real	5.3776	0.00%	-0.09%	1.46%	3.45%
- Argentine Peso	88.5327	0.00%	0.30%	3.28%	5.21%

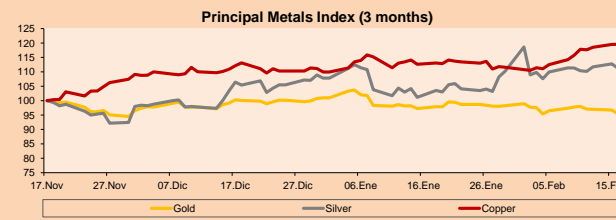
*Legend: Variation 1D: 1 Day; 5D: 5 Days; 1M: 1 Month; YTD: Var.% 12/31/20 to date



Base: 17/11/20=100
Source: Bloomberg

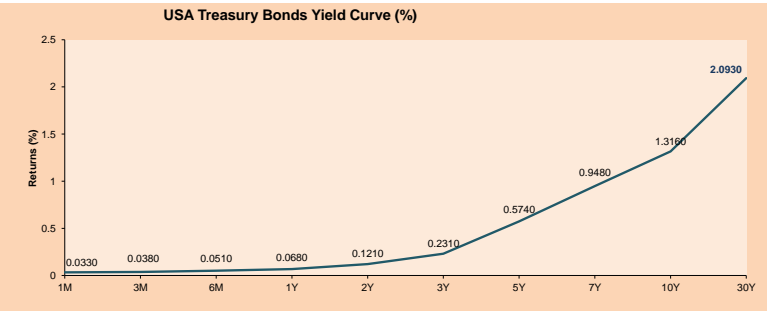
Commodities	Close	1 D*	5 D*	1 M*	YTD*
▼ Oro (US\$ Oz. T) (LME)	1,794.47	-1.34%	-2.39%	-1.89%	-5.47%
▼ Plata (US\$ Oz. T) (LME)	27.24	-1.36%	-0.09%	9.99%	3.18%
▲ Cobre (US\$ TM) (LME)	8,424.00	0.02%	3.26%	6.13%	8.71%
▲ Zinc (US\$ TM) (LME)	2,809.50	-0.66%	4.94%	4.93%	2.94%
▲ Petróleo WTI (US\$ Barril) (NYM)	60.05	0.98%	2.90%	14.56%	23.48%
▼ Estanho (US\$ TM) (LME)	27,130.00	-8.42%	10.98%	26.19%	32.05%
▼ Plomo (US\$ TM) (LME)	2,093.25	-0.91%	1.26%	5.77%	5.95%
▲ Açuúcar #11 (US\$ Libra) (NYB-ICE)	15.92	1.79%	1.02%	2.18%	8.45%
▼ Cacao (US\$ TM) (NYB-ICE)	2,428.00	-0.21%	-0.08%	-2.18%	-4.22%
▲ Café Arábica (US\$ TM) (NYB-ICE)	126.20	2.56%	0.96%	-3.11%	-3.03%

*Leyenda: Variación 1D: 1 Día; 5D: 5 Días; 1M: 1 Mes; YTD: Var.% 31/12/20 a la fecha



Base: 17/11/20=100
Source: Bloomberg

ETFs	Curr.	Close	1D	5D	30 D	YTD	Exchange
SPDR S&P 500 ETF TRUST	USD	392.30	-0.09%	0.53%	4.42%	4.93%	NYSE Arca
ISHARES MSCI EMERGING MARKET	USD	57.94	0.24%	1.76%	6.61%	12.13%	NYSE Arca
ISHARES IBOXX HIGH YLD CORP	USD	87.64	-0.16%	0.02%	0.61%	0.39%	NYSE Arca
FINANCIAL SELECT SECTOR SPDR	USD	32.06	1.71%	2.43%	3.62%	8.75%	NYSE Arca
VANECK GOLD MINERS	USD	34.09	-1.98%	-3.10%	-1.22%	-5.36%	NYSE Arca
ISHARES RUSSELL 2000 ETF	USD	225.83	-0.63%	-1.12%	7.16%	15.18%	NYSE Arca
SPDR GOLD SHARES	USD	168.24	-1.44%	-2.23%	-1.69%	-5.67%	NYSE Arca
ISHARES 20+ YEAR TREASURY BO	USD	144.87	-1.52%	-2.63%	-4.58%	-8.15%	NASDAQ GM
INVESCO QQQ TRUST SERIES 1	USD	335.54	-0.27%	0.61%	7.59%	6.95%	NASDAQ GM
ISHARES NASDAQ BIOTECHNOLOGY	USD	167.01	-2.17%	-2.71%	3.28%	10.24%	NASDAQ GM
ENERGY SELECT SECTOR SPDR	USD	45.79	2.51%	4.38%	7.11%	20.82%	NYSE Arca
PROSHARES ULTRA VIX S&P 500	USD	9.56	1.49%	-4.50%	-12.27%	-10.23%	Cboe BZX
UNITED STATES OIL FUND LP	USD	40.45	1.28%	3.27%	14.46%	22.54%	NYSE Arca
ISHARES MSCI BRAZIL ETF	USD	36.23	0.56%	0.61%	-1.79%	-2.27%	NYSE Arca
SPDR S&P OIL & GAS EXP & PR	USD	78.17	3.36%	6.76%	12.85%	33.62%	NYSE Arca
UTILITIES SELECT SECTOR SPDR	USD	61.92	-1.12%	-2.01%	-1.70%	-1.24%	NYSE Arca
ISHARES US REAL ESTATE ETF	USD	88.66	-0.98%	-0.24%	4.81%	3.51%	NYSE Arca
SPDR S&P BIOTECH ETF	USD	160.16	-2.53%	-6.81%	5.50%	13.77%	NYSE Arca
ISHARES IBOXX INVESTMENT GRA	USD	133.73	-0.71%	-1.06%	-1.77%	-3.19%	NYSE Arca
ISHARES JIP MORGAN US EMERGI	USD	112.09	-1.22%	-1.51%	-1.16%	-3.30%	NASDAQ GM
REAL ESTATE SELECT SECT SPDR	USD	37.96	-1.07%	-0.60%	4.46%	3.83%	NYSE Arca
ISHARES CHINA LARGE-CAP ETF	USD	53.61	0.06%	2.70%	10.26%	15.46%	NYSE Arca
CONSUMER STAPLES SPDR	USD	65.57	-0.18%	-0.58%	-0.09%	-2.79%	NYSE Arca
VANECK JR GOLD MINERS	USD	49.27	-1.95%	-3.05%	-0.16%	-9.16%	NYSE Arca
SPDR BBG BARC HIGH YIELD BND	USD	109.40	-0.22%	0.05%	0.65%	0.42%	NYSE Arca
VANGUARD REAL ESTATE ETF	USD	88.90	-0.77%	0.00%	5.07%	4.67%	NYSE Arca
GRAYSCALE BITCOIN TRUST BTC	USD	50.31	2.86%	5.02%	27.88%	57.21%	OTC US



Source: Bloomberg

Capital Market Laboratory Coordinator: Economist Bruno Bellido
Collaboration: Piero Best, Maria Camarena, Alonso Stephen Hernández and Adrian Paredes
email: pulso@pulsobursatil.ulima.edu.pe
facebook: www.facebook.com/pulsobursatil.ulima

The content of this document is just for informational purposes. The information and opinions expressed should not be considered as recommendations for future decisions. Under any circumstances, the Capital Market Laboratory of University of Lima will be responsible for the use of the statements in this document.

LIMA

Stocks

Ticker	Currency	Price	1D*	5D*	30D*	YTD*	Frequency	Volume (US\$)	Beta	Dividend Yield (%)	Price Earning	Market Cap. (M US\$)	Economic Sector*	Index Weight
▲ ALICORC1 PE**	S/.	8.22	0.03%	1.99%	0.02%	1.58%	100.00%	113,083	0.71	3.04	21.44	1,918.54	Industrial	3.53%
▲ ATACOCB1 PE**	S/.	0.17	0.00%	0.61%	18.57%	20.29%	95.00%	2,689	1.09	0.00	-	42.93	Mining	1.02%
▼ BACKUS1 PE**	S/.	24.10	-0.37%	1.69%	7.11%	19.60%	85.00%	1,649	0.54	1.46	10.91	8,844.00	Industrial	0.82%
▲ BAP PE**	US\$	165.10	3.19%	0.24%	6.86%	2.80%	100.00%	1,081,011	1.67	5.33	-	15,582.52	Diverse	5.82%
- BVN PE**	US\$	10.32	0.00%	0.19%	-7.11%	-14.00%	95.00%	389,193	1.23	0.00	-	2,844.55	Mining	5.88%
- CASAGRC1 PE**	S/.	6.00	-3.23%	-3.23%	10.09%	26.32%	80.00%	30,245	0.66	3.77	10.77	138.34	Agricultural	1.31%
▲ BBVAC1 PE**	S/.	2.49	0.40%	1.22%	7.33%	14.75%	95.00%	141,007	0.73	3.47	17.96	4,450.12	Finance	2.85%
- CORARE1 PE**	S/.	1.15	0.00%	0.00%	30.68%	29.21%	100.00%	17,298	0.61	6.07	6.86	411.30	Industrial	1.72%
▲ CPACASC1 PE**	S/.	6.05	0.00%	-1.79%	6.51%	14.15%	100.00%	1,428,993	0.58	3.80	19.52	768.65	Industrial	2.38%
- CVERDEC1 PE**	US\$	25.00	4.17%	5.04%	16.28%	19.50%	100.00%	498,795	0.81	0.00	40.64	8,751.40	Mining	5.25%
- ENGEPEC1 PE**	S/.	2.40	0.00%	0.00%	12.68%	20.00%	85.00%	1,018	0.49	0.00	12.06	1,864.89	Public Services	1.44%
▼ ENDISPC1**	S/.	6.15	-1.60%	-2.38%	12.02%	13.89%	85.00%	50,847	0.49	0.00	11.60	1,074.96	Public Services	0.98%
▲ FERREYC1 PE**	S/.	2.06	2.49%	1.48%	5.64%	18.39%	100.00%	346,121	0.60	3.72	27.80	550.16	Diverse	4.90%
- AENZAC1 PE**	US\$	1.72	0.00%	-4.97%	0.00%	-1.15%	95.00%	4,708	0.83	0.00	-	410.51	Diverse	4.05%
▲ IFS PE**	US\$	34.50	6.15%	4.55%	-0.86%	11.51%	100.00%	1,247,640	1.32	5.07	37.97	3,982.95	Diverse	7.22%
- INRETC1 PE**	US\$	43.00	0.00%	-2.05%	-3.91%	9.69%	100.00%	203,668	0.61	1.31	35.21	4,420.71	Diverse	5.28%
▼ LUSURC1 PE**	S/.	27.50	-0.36%	-2.14%	-1.79%	7.84%	90.00%	378,389	0.57	2.54	26.99	3,665.50	Public Services	1.81%
▲ MINSUR1 PE**	S/.	2.90	8.21%	19.83%	44.28%	56.76%	90.00%	2,910,949	0.76	0.00	-	2,288.53	Mining	3.09%
▲ PML PE**	US\$	0.15	5.63%	3.45%	3.45%	41.51%	65.00%	36,189	1.49	0.00	-	39.63	Mining	2.12%
▼ RELAPAC1 PE**	S/.	0.09	-2.17%	13.92%	28.57%	30.43%	100.00%	62,848	0.51	0.00	-	204.95	Industrial	2.12%
▲ SCCO PE**	US\$	73.00	1.81%	3.19%	2.76%	10.77%	80.00%	100,892	0.74	2.33	33.93	56,434.35	Mining	2.14%
▲ SIDERC1 PE**	S/.	1.03	3.00%	3.00%	24.10%	21.18%	95.00%	46,171	0.84	33.23	12.24	346.20	Industrial	1.43%
- TV PE**	US\$	0.18	0.00%	4.05%	-4.26%	22.45%	100.00%	19,109	1.51	0.00	-	178.04	Mining	2.93%
▼ UNACEMC1 PE**	S/.	1.84	-0.54%	1.66%	10.18%	18.71%	100.00%	18,321	0.82	0.71	50.60	915.71	Industrial	3.00%
▼ VOLCABC1 PE**	S/.	0.78	-2.50%	-2.50%	47.17%	50.00%	100.00%	691,026	0.95	0.00	-	1,997.08	Mining	5.90%
▼ NEXAPEC1 PE**	S/.	3.80	-5.00%	0.00%	24.59%	34.28%	90.00%	9,275	1.07	0.00	-	1,374.47	Mining	1.56%

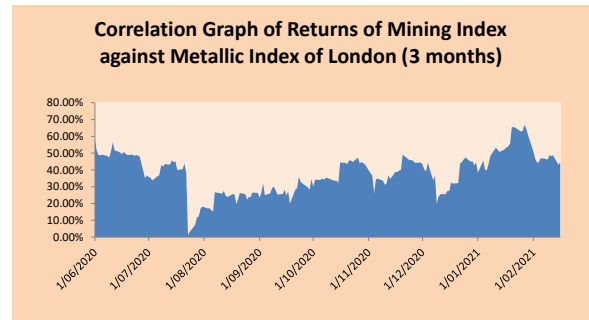
Quantity of shares: 26
 Source: Bloomberg, Economática
 * Bloomberg Industry Classification System
 ** PER is used in the stock market and original currency of the instrument
 *Legend: Variation 1D: 1 Day; 5D: 5 Days; 1M: 1 Month; YTD: Var.% 12/31/20 to date

Sectorial Indices

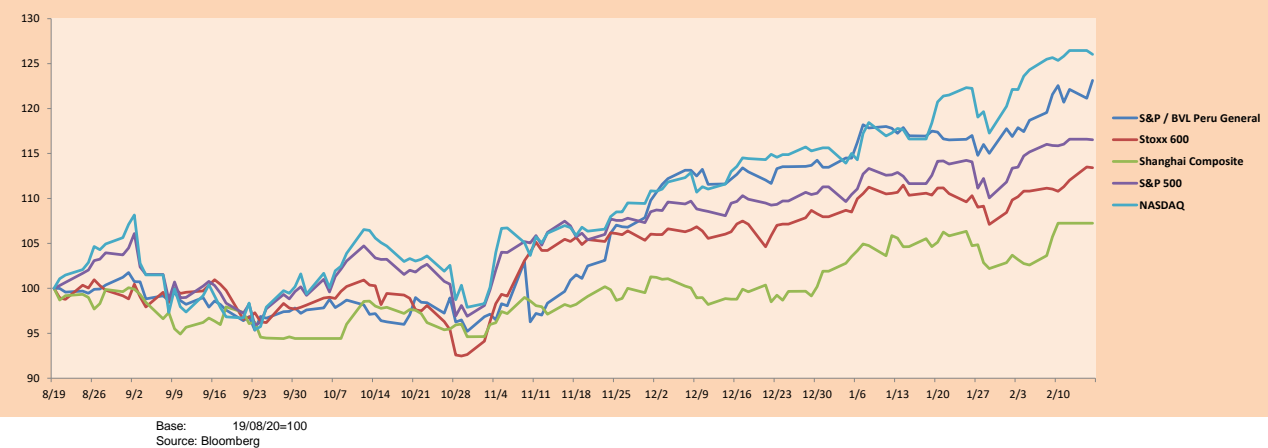
	Close	1D*	5D*	30D*	YTD*	Beta
▲ S&P/BVLMining	425.63	1.62%	3.26%	5.70%	9.15%	0.80
▼ S&P/BVLConsumer	1,239.89	-0.39%	-1.01%	0.45%	13.90%	0.40
▲ S&P/BVLIndustrials	216.87	0.60%	-0.03%	7.08%	13.81%	0.52
▲ S&P/BVLFinancials	1,084.66	3.61%	1.11%	7.22%	4.91%	1.80
▲ S&P/BVLConstruction	233.87	-0.13%	-0.79%	7.45%	11.84%	0.55
▼ S&P/BVLPublicSvcs	674.13	-0.33%	-1.08%	3.26%	9.78%	0.17
▼ S&P/BVLElectricUtil	658.11	-0.33%	-1.08%	3.26%	9.77%	0.17

S&P/BVLConstructionTRPEN

*Legend: Variation 1D: 1 Day; 5D: 5 Days; 1M: 1 Month; YTD: Var.% 12/31/20 to date



Indices (6 months)



Capital Market Laboratory Coordinator: Economist Bruno Bellido
 Collaboration: Piero Best, Maria Camarena, Alonso Stephen Hernández and Adrian Paredes
 email: pulsobursatil@ulima.edu.pe
 facebook: www.facebook.com/pulsobursatil.ul

The content of this document is just for informational purposes. The information and opinions expressed should not be consider as recommendations for future decisions. Under any circumstances, the Capital Market Laboratory of University of Lima will be responsible for the use of the statements in this document.

SOVEREIGN RATING

RISK RATINGS

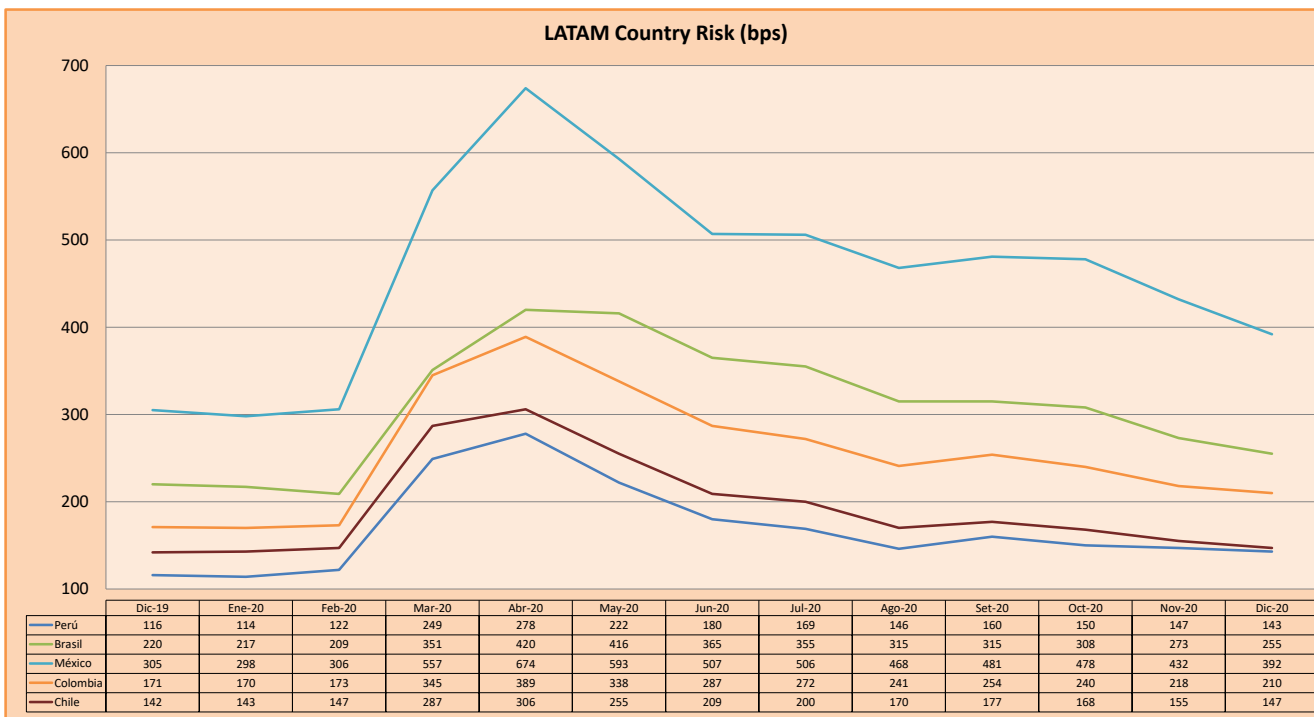
Moody's	S&P	Fitch	
Aaa	AAA	AAA	Prime
Aa1	AA+	AA+	High credit quality
Aa2	AA	AA	
Aa3	AA-	AA-	
A1	A+	A+	Medium-high grade, with low credit risk
A2	A	A	
A3	A-	A-	
Baa1	BBB+	BBB+	Moderate Credit Risk
Baa2	BBB	BBB	
Baa3	BBB-	BBB-	
Ba1	BB+	BB+	It has speculative elements and it is subject to substantial credit risk
Ba2	BB	BB	
Ba3	BB-	BB-	
B1	B+	B+	It is considered speculative and it has high credit risk
B2	B	B	
B3	B-	B-	
Caa1	CCC+		Bad credit conditions and it is subject to high credit risk
Caa2	CCC		
Caa3	CCC-	CCC	
Ca	C		Very close to default or in default
		DDD	
C	D	DD D	

Source: Bloomberg

Latin America Credit Rating			
Clasificadora de riesgo			
Country	Moody's	Fitch	S&P
Peru	A3	BBB+	BBB+
México	Ba2	BB-	BB-
Venezuela	C	WD	SD
Brazil	Ba2	BB-	BB-
Colombia	Baa2	BBB-	BBB-
Chile	A1	A-	A+
Argentina	Ca	WD	CCC+
Panama	Baa1	BBB-	BBB

Source: Bloomberg

LATAM Country Risk (bps)



Source: BCRP

Capital Market Laboratory Coordinator: Economist Bruno Bellido
Collaboration: Piero Best, Maria Camarena, Alonso Stephen Hernández and Adrian Paredes
email: pulsobursatil@ulima.edu.pe
facebook: www.facebook.com/pulsobursatil.ul