

PULSO BURSÁTIL

FACULTAD DE CIENCIAS EMPRESARIALES Y ECONÓMICAS
CARRERA DE ECONOMÍA
LABORATORIO DE MERCADO DE CAPITALES

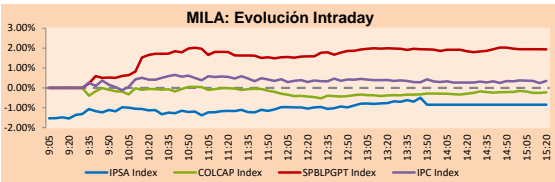


MILA

Lima, February 22, 2021

Main Indexes	Close	1 D	5 D	1 M	YTD	Cap. Burs. (US\$ bill)
▼ IPSA (Chile)	4,569.34	-1.18%	-1.10%	1.97%	9.39%	126.33
▼ IGPA (Chile)	23,080.93	-1.04%	-1.01%	2.02%	9.87%	157.12
▼ COLSC (Colombia)	1,072.96	-0.62%	-0.23%	-1.54%	1.32%	5.82
▼ COLCAP (Colombia)	1,352.21	-0.03%	-1.25%	-4.71%	-5.96%	79.99
▲ S&P/BVL (Perú)*	23,180.01	1.69%	4.26%	8.40%	11.32%	124.75
▲ S&P/BVL SEL (Perú)	610.74	0.98%	2.54%	5.40%	10.76%	101.60
▲ S&P/BVL LIMA 25	29,826.90	0.82%	2.33%	10.42%	18.37%	123.73
▲ IPC (México)	44,946.60	0.10%	1.79%	0.59%	2.00%	276.69
▲ S&P MILA 40	558.45	0.20%	1.25%	3.40%	4.46%	5,736.42

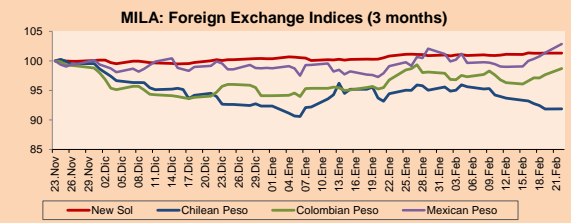
*Legend: Variation 1D: 1 day; 5D: 5 days; 1M: 1 Month; YTD: Var% 12/31/20 to date



Source: Bloomberg

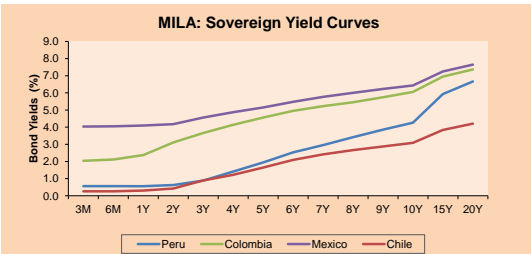
Currency	Price	1D*	5D*	30 D*	YTD*
- New Sol (PEN)	3.6525	0.00%	0.22%	0.50%	0.95%
▲ Chilean Peso (CLP)	708.18	0.03%	-1.56%	-2.73%	-0.51%
▲ Colombian Peso (COP)	3,597.85	1.08%	2.74%	2.01%	4.90%
▲ Mexican Peso (MXN)	20.73	1.48%	3.85%	3.79%	4.11%

*Legend: Variation 1D: 1 day; 5D: 5 days; 1M: 1 Month; YTD: Var% 12/31/20 to date



Base: 23/11/20=100
Source: Bloomberg

Fixed Income	Currency	Price	Bid Yield (%)	Ask Yield (%)	Duration
PERU 7.35 07/21/25	USD	126.351	1.25	1.14	3.89
PERU 4.125 08/25/27	USD	114.83	1.74	1.67	5.74
PERU 8.75 11/21/33	USD	160.827	3.02	2.94	8.91
PERU 6.55 03/14/37	USD	141.561	3.26	3.17	10.56
PERU 5.625 11/18/2050	USD	140.782	3.45	3.40	17.06
CHILE 2.25 10/30/22	USD	103.156	0.50	0.23	1.65
CHILE 3.125 01/21/26	USD	109.694	1.15	1.03	4.60
CHILE 3.625 10/30/42	USD	107.51	3.16	3.13	15.60
COLOM 11.85 03/09/28	USD	159.95	2.62	2.40	5.24
COLOM 10.375 01/28/33	USD	160.083	4.11	3.88	8.07
COLOM 7.375 08/18/37	USD	136.48	4.33	4.23	10.59
COLOM 6.125 01/18/41	USD	123.636	4.38	4.30	12.64
MEX 4 10/02/23	USD	123.636	4.376	4.303	12.64
MEX5.55 01/45	USD	120.505	4.21	4.16	14.48



Source: Bloomberg

Equity

Largest gains	Exchange	Currency	Price	▲ %
GRUPO MEXICO-B	Mexico	MXN	109.97	7.89
BUENAVENTURA-ADR	Peru	USD	11.48	7.39
SOUTHERN COPPER	Peru	USD	82.40	4.97
ECOPETROL	Colombia	COP	2233.00	3.14
SOQUIMICH-B	Chile	CLP	40905.00	2.69

Per Turnover	Exchange	Amount (US\$)
GRUPO MEXICO-B	Mexico	83,247,202
GRUPO F BANORT-O	Mexico	53,703,791
WALMART DE MEXIC	Mexico	47,429,626
AMERICA MOVIL-L	Mexico	37,722,545
SOQUIMICH-B	Chile	27,856,520

Largest losses	Exchange	Currency	Price	▼ %
GRUPO ENERGIA BO	Colombia	COP	2510	-4.24
GRUPO CARSO-A1	Mexico	MXN	49.25	-4.03
GRUPO FIN INB-O	Mexico	MXN	18.25	-4.00
BANCO SANTANDER	Chile	CLP	41.33	-3.61
ALFA SAB-A	Mexico	MXN	11.72	-3.54

Per Volume	Exchange	Volume
BANCO SANTANDER	Chile	224,747,378
ITAU CORPBANCA	Chile	209,261,919
ENEL AMERICAS SA	Chile	113,988,428
ENEL CHILE SA	Chile	105,120,566
BANCO DE CHILE	Chile	64,256,926

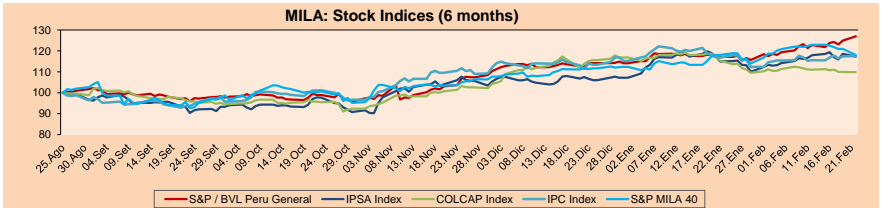
MILA

Peru: The General Index of the BVL ended today's session with a positive result of +1.69%. The index maintains an annual accumulated positive trend of +11.32% in local currency, while the adjusted return in dollars amounts to +10.27%. Then, the S&P / BVL Peru SEL varied by +0.98% while the S&P / BVL LIMA 25 by +0.82%. The PEN spot reached 5 / 3.6525. Headline: Copper price exceeds US \$ 4 per pound, the highest value in almost a decade.

Chile: The IPSA index ended the day with a negative return of -1.18%. The sectors most affected during the session were Finance (-2.40%) and Public Services (-2.31%). The worst performing stocks were Banco Santander Chile (-3.61%) and Enel Americas SA (-3.40%). Headline: Chile wins the race to attract foreign investment in Latin America: surpasses Uruguay and Costa Rica.

Colombia: The COLCAP index closed today with a negative return of -0.03%. The sectors most affected during the session were Public Services (-1.59%) and Basic Products (-0.62%). The worst performing stocks were Empresa de Energía de Bogotá 5 (-4.24%) and Cementos Argos SA (-1.68%). Headline: American Airlines opens new routes to New York from Chile and Colombia.

Mexico: The IPC index closed the day with a positive return of +0.10%. The sectors that benefited the most during the session were Materials (+4.21%) and Non-basic consumer products (+0.19%). The stocks with the best performance were Grupo México SAB de CV (+7.89%) and Controladora Nemark SAB de CV (+5.80%). Headline: Mexico gives a new tax benefit to the state company Pemex for US \$ 3,540M.

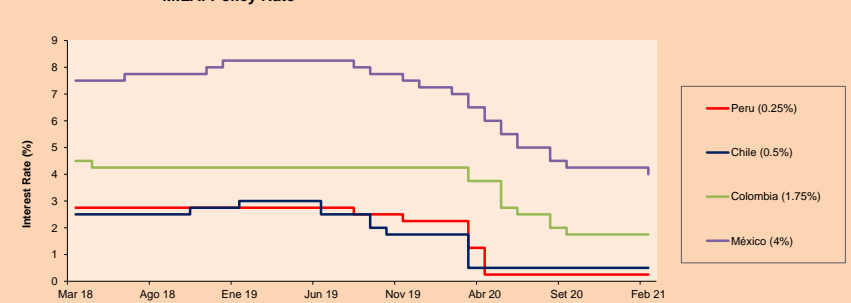


Base: 26/08/20=100
Source: Bloomberg

ETFs

ETFs	Curr.	Close	1D	5D	30 D	YTD	Exchange
▲ iShares MSCI All Peru Caped Index Fund	USD	38.72	1.41%	2.81%	9.81%	11.65%	NYSE Arca
▲ iShares MSCI All Chile Caped Index Fund	USD	32.48	-2.05%	0.19%	2.75%	7.51%	Cboe BZX
▼ Global X MSCI Colombia	USD	10.37	-0.14%	-2.26%	-5.12%	-8.71%	NYSE Arca
▼ iShares MSCI Mexico Capped	USD	40.99	-1.73%	-3.58%	-4.59%	-4.65%	NYSE Arca
▼ iShares FTSE Emerging Markets	USD	55.84	-2.94%	-3.39%	0.02%	8.07%	NYSE Arca
▼ Vanguard FTSE Emerging Markets	USD	54.47	-2.84%	-3.06%	0.87%	8.07%	NYSE Arca
▼ iShares Core MSCI Emerging Markets	USD	67.08	-2.85%	-3.16%	0.34%	8.12%	NYSE Arca
▼ iShares JP Morgan Emerging Markets Bonds	USD	63.71	-1.70%	-2.04%	0.47%	4.31%	Cboe BZX
▼ Morgan Stanley Emerging Markets Domestic	USD	6.14	-0.65%	-1.92%	-0.49%	-2.38%	New York

MILA: Policy Rate



Source: Bloomberg

Capital Market Laboratory Coordinator: Economist Bruno Bellido
Collaboration: Piero Best, Maria Camarena, Alonso Stephen Hernández and Adrian Paredes
email: pulsobursatil@ulima.edu.pe
facebook: www.facebook.com/pulsobursatil.ul

The content of this document is just for informational purposes. The information and opinions expressed should not be considered as recommendations for future decisions. Under any circumstances, the Capital Market Laboratory of University of Lima will be responsible for the use of the statements in this document.

PULSO BURSÁTIL

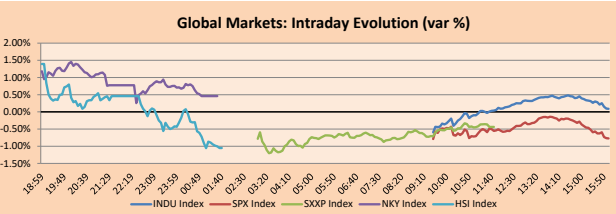
FACULTAD DE CIENCIAS EMPRESARIALES Y ECONÓMICAS
CARRERA DE ECONOMÍA
LABORATORIO DE MERCADO DE CAPITALES



WORLD

Main Indices	Close	1 D*	5 D*	1 M*	YTD*	Market Cap. (US\$ Mill.)
▲ Dow Jones (USA)	31,521.69	0.09%	0.20%	1.69%	2.99%	9,670,567
▼ Standard & Poor's 500 (EEUU)	3,876.50	-0.77%	-1.48%	0.91%	3.21%	34,221,809
▼ NASDAQ Composite (USA)	13,533.05	-2.46%	-3.99%	-0.07%	5.00%	22,055,657
▼ Stoxx EUROPE 600 (Europe)	413.06	-0.44%	-1.53%	1.11%	3.52%	9,341,609
▼ DAX (Germany)	13,950.04	-0.31%	-1.13%	0.55%	1.69%	1,040,814
▼ FTSE 100 (United Kingdom)	6,612.24	-0.18%	-2.13%	-1.24%	2.35%	1,362,057
▼ CAC 40 (France)	5,767.44	-0.11%	-0.33%	3.74%	3.89%	1,549,876
▼ IBEX 35 (Spain)	8,112.20	-0.48%	-1.11%	0.94%	0.48%	439,672
▼ MSCI AC Asia Pacific Index	216.34	-0.86%	-1.43%	1.52%	8.21%	27,197,883
▼ HANG SENG (Hong Kong)	30,319.83	-1.06%	0.48%	2.96%	11.34%	4,632,249
▼ SHANGHAI SE Comp. (China)	3,642.45	-1.45%	3.11%	0.99%	4.86%	6,928,529
▲ NIKKEI 225 (Japan)	30,156.03	0.46%	0.24%	5.32%	9.88%	4,118,334
▲ S&P / ASX 200 (Australia)	6,780.89	-0.19%	-1.28%	-0.06%	3.18%	1,704,690
▲ KOSPI (South Korea)	3,079.75	0.10%	1.79%	-2.62%	6.44%	1,836,732

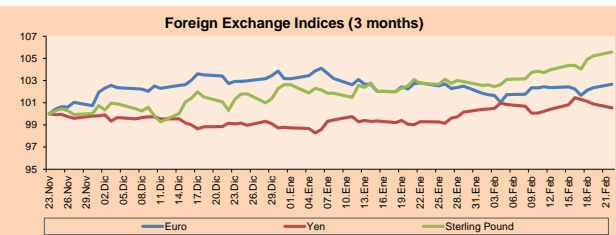
*Legend: Variation 1D: 1 Day; 5D: 5 Days; 1M: 1 Month; YTD: Var.% 12/31/20 to date



Source: Bloomberg

Currency	Price	1 D*	5 D*	1 M*	YTD*
▲ Euro	1.2157	0.31%	0.23%	-0.12%	-0.48%
▲ Yen	105.0800	-0.35%	-0.28%	1.25%	1.77%
▲ Sterling Pound	1.4063	0.34%	1.15%	2.75%	2.87%
▲ Yuan	6.4648	0.11%	0.10%	-0.26%	-0.96%
▲ Hong Kong Dollar	7.7535	0.01%	0.01%	0.02%	0.01%
▲ Brazilian Real	5.4600	1.34%	1.53%	-0.19%	5.03%
▲ Argentine Peso	89.4390	0.32%	1.02%	3.32%	6.29%

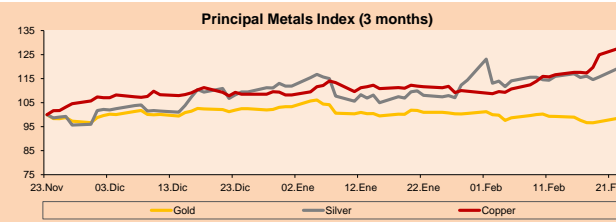
*Legend: Variación 1D: 1 Día; 5D: 5 Días; 1M: 1 Mes; YTD: Var.% 12/31/20 a la fecha



Base: 23/11/20=100
Source: Bloomberg

Commodities	Close	1 D*	5 D*	1 M*	YTD*
▲ Oro (US\$ Oz. T) (LME)	1,809.67	1.42%	-0.51%	-2.49%	-4.67%
▲ Plata (US\$ Oz. T) (LME)	28.14	3.11%	1.88%	10.37%	6.57%
▲ Cobre (US\$ TM) (LME)	9,132.50	2.08%	8.43%	14.25%	17.85%
▲ Zinc (US\$ TM) (LME)	2,883.50	0.65%	1.95%	7.07%	5.65%
▲ Petróleo WTI (US\$ Barril) (NYM)	61.70	4.12%	3.91%	18.22%	26.72%
▲ Estanho (US\$ TM) (LME)	29,055.00	1.10%	-1.92%	29.83%	41.42%
▼ Plomo (US\$ TM) (LME)	2,135.75	-0.74%	1.10%	5.37%	8.10%
▲ Acaúcar #11 (US\$ Libra) (NYB-ICE)	17.44	3.26%	11.51%	15.65%	18.80%
▲ Cacao (US\$ TM) (NYB-ICE)	2,490.00	1.92%	2.34%	0.16%	-1.78%
▲ Café Arábica (US\$ TM) (NYB-ICE)	134.95	4.49%	9.67%	6.93%	3.69%

*Leyenda: Variación 1D: 1 Día; 5D: 5 Días; 1M: 1 Mes; YTD: Var.% 31/12/20 a la fecha



Base: 23/11/20=100
Source: Bloomberg

Equity

Germany (Stocks from DAX Index)

Largest gains	Curr.	Price	▲%	Exchange	Largest losses	Curr.	Price	▼%	Exchange
1COV GY	EUR	60.1	2.45	Xetra	RWE GY	EUR	31.73	-2.28	Xetra
VOW3 GY	EUR	174	2.03	Xetra	CON GY	EUR	118	-1.95	Xetra
MTX GY	EUR	195.2	1.91	Xetra	EOAN GY	EUR	8.548	-1.57	Xetra
HEI GY	EUR	66.64	1.59	Xetra	ADS GY	EUR	291.1	-1.52	Xetra

Europe (Stocks from STOXX EUROPE 600)

Largest gains	Curr.	Price	▲%	Exchange	Largest losses	Curr.	Price	▼%	Exchange
CCL LN	Gbp	1556	8.21	Londres	FHS LN	Gbp	242.6	-9.81	Londres
IAG LN	Gbp	178.1	7.45	Londres	HFG GY	EUR	67.35	-7.23	Xetra
RRV LN	Gbp	105.45	6.89	Londres	TECN SE	CHF	404.2	-7.08	SIX Swiss Ex
SW FP	EUR	79.58	5.77	EN Paris	DHER GY	EUR	113.45	-6.78	Xetra

Global Overview:

United States:

US markets ended with mixed returns as long-term Treasury yields rose again, indicating prospects for rising inflation. Assets with higher growth can make it difficult to justify high stock valuations by reducing the value of their future earnings to investors. Against a backdrop of rising rates and faster economic growth, technology companies with rapidly increasing profits become less attractive to investors. Yields on benchmark 10-year US Treasuries rose to 1.363%, a 26-point variation, which would be the biggest monthly gain in three years. In addition, Federal Reserve Chairman Jerome Powell is scheduled to speak to the Senate Banking Committee on Tuesday, and investors are expected to look for potential changes in the central bank's dovish outlook. In corporate stock, Goodyear Tire & Rubber Co., +21.05%, said Monday that it would acquire Cooper Tire & Rubber Co., +29.40%, in a deal with an enterprise value of approximately \$ 2.5 billion. In this way, the main indices S&P 500 -0.77%, DJIA +0.09% and NASDAQ -2.46% closed with mixed results.

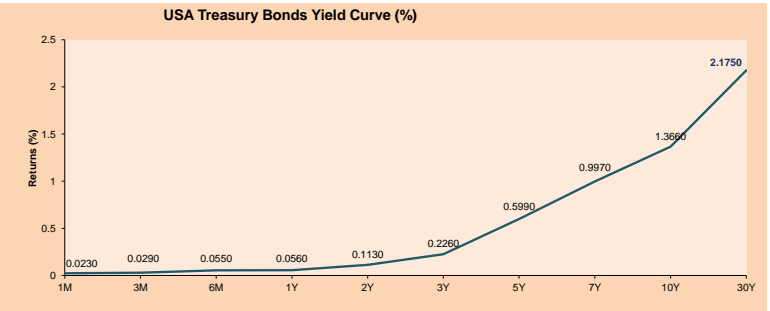
Europe:

European markets ended the day's session experiencing negative returns due to concerns about the risk of rising inflation levels following the recent rise in U.S. bond yields. On the other hand, rates in the Euro zone fell on Monday after Christine Lagarde, president of the European central bank, said that it is closely monitoring the increase in the cost of debt in order to maintain the strength of its common currency, according to Reuters. Thus, the Stoxx 600 closed with negative returns dragged down by technology stocks -1.72% and utilities -1.70%. In London, the FTSE 100 fell despite Prime Minister Boris Johnson's announcement that he promises to chart a path to gradually reopen the economy. On the other hand, disputes remain over the access of British stocks to continental financial markets after Brexit. Finally, the German benchmark index halted its decline from today's session due to the announcement of increased business confidence reaching a high since October. Stoxx 600 -0.37%, FTSE 100 -0.18%, CAC -0.11% and DAX -0.31% closed lower.

Asia:

The main Asian indices closed mostly lower amid expectations of high inflation as a result of the US stimulus and the tightening of policies in China. Thus, Hong Kong's benchmark index closed the session dragged down by technology stocks, Tencent -3.71%, Alibaba -2.49% and Xiaomi -5.38%. In mainland China the Shanghai composite posted its worst daily decline in almost 7 months following concerns over policy tightening. On the other hand, in Japan the Nikkei ended the session higher driven by the technology +2.21% and materials +1.08% sectors amid expectations of economic growth following the end of the state of emergency. In individual stocks Toshiba closed down -1.34% despite the announcement of the closure of its talks with General Electric regarding the co-production of equipment for offshore wind energy systems. Likewise, in Korea, the KOSPI closed lower after expectations for increased exports were tempered following a rise in U.S. Treasury yields. Samsung Electronics and LG Chem experienced declines of -0.48% and -2.89% respectively. Thus Hang Seng -1.06%, NIKKEI +0.46%, CSI 300 -3.14% and S&P/ASX 200 -0.19%.

ETFs	Curr.	Close	1D	5D	30 D	YTD	Exchange
SPDR S&P 500 ETF TRUST	USD	387.03	-0.77%	-1.43%	1.08%	3.52%	NYSE Arca
ISHARES MSCI EMERGING MARKET	USD	55.84	-2.94%	-3.39%	0.02%	8.07%	NYSE Arca
ISHARES IBOXX HIGH YLD CORP	USD	87.23	-0.31%	-0.63%	-0.08%	-0.08%	NYSE Arca
FINANCIAL SELECT SECTOR SPDR	USD	32.71	0.93%	3.78%	7.81%	10.96%	NYSE Arca
VANECK GOLD MINERS	USD	34.21	4.49%	-1.84%	-2.90%	-5.02%	NYSE Arca
ISHARES RUSSELL 2000 ETF	USD	223.73	-0.65%	-1.55%	4.06%	14.11%	NYSE Arca
SPDR GOLD SHARES	USD	169.51	1.50%	-0.69%	-2.52%	-4.96%	NYSE Arca
ISHARES 20+ YEAR TREASURY BO	USD	142.18	-0.76%	-3.35%	-6.39%	-9.86%	NASDAQ GM
INVESCO QQQ TRUST SERIES 1	USD	322.44	-2.59%	-4.16%	-0.92%	2.77%	NASDAQ GM
ISHARES NASDAQ BIOTECHNOLOGY	USD	162.14	-2.51%	-5.03%	-1.55%	7.03%	NASDAQ GM
ENERGY SELECT SECTOR SPDR	USD	47.78	3.46%	6.96%	13.57%	26.07%	NYSE Arca
PROSHARES ULTRA VIX ST FLUTER	USD	9.36	6.24%	-0.64%	-2.45%	-12.11%	Cboe BZX
UNITED STATES OIL FUND LP	USD	41.28	4.03%	3.36%	17.17%	25.05%	NYSE Arca
ISHARES MSCI BRAZIL ETF	USD	33.47	-6.19%	-7.11%	-4.48%	-9.71%	NYSE Arca
SPDR S&P OIL & GAS EXP & PR	USD	79.93	3.08%	5.69%	17.46%	36.63%	NYSE Arca
UTILITIES SELECT SECTOR SPDR	USD	60.21	-1.95%	-3.85%	-4.19%	-3.97%	NYSE Arca
ISHARES US REAL ESTATE ETF	USD	89.24	0.60%	-0.34%	3.80%	4.19%	NYSE Arca
SPDR S&P BIOTECH ETF	USD	154.29	-3.00%	-6.10%	1.13%	9.60%	NYSE Arca
ISHARES IBOXX INVESTMENT GRA	USD	132.34	-0.62%	-1.74%	-2.45%	-4.19%	NYSE Arca
ISHARES JIP MORGAN USD EMERGI	USD	111.23	-0.68%	-1.98%	-2.30%	-4.04%	NASDAQ GM
REAL ESTATE SELECT SECT SPDR	USD	38.31	0.58%	-0.16%	4.05%	4.79%	NYSE Arca
ISHARES CHINA LARGE-CAP ETF	USD	51.64	-3.67%	-3.62%	-0.14%	11.22%	NYSE Arca
CONSUMER STAPLES SPDR	USD	65.00	0.09%	-1.05%	-0.11%	-3.63%	NYSE Arca
VANECK JR GOLD MINERS	USD	50.31	5.83%	0.12%	-0.06%	-7.25%	NYSE Arca
SPDR BBG BARC HIGH YIELD BND	USD	108.94	-0.33%	-0.64%	0.00%	0.00%	NYSE Arca
VANGUARD REAL ESTATE ETF	USD	89.66	0.83%	0.08%	4.54%	5.57%	NYSE Arca
GRAYSCALE BITCOIN TRUST BTC	USD	53.50	-5.64%	9.38%	55.30%	67.19%	OTC US



Source: Bloomberg

Capital Market Laboratory Coordinator: Economist Bruno Bellido
Collaboration: Piero Best, Maria Camarena, Alonso Hernández and Adrian Paredes
email: pulso@pulsobursatil.com
facebook: www.facebook.com/pulsobursatil

LIMA

Stocks

Ticker	Currency	Price	1D*	5D*	30D*	YTD*	Frequency	Volume (US\$)	Beta	Dividend Yield (%)	Price Earning	Market Cap. (M US\$)	Economic Sector*	Index Weight
▼ ALICORC1 PE**	S/.	8.14	-0.62%	-0.23%	-1.54%	1.32%	100.00%	20,909	0.69	3.07	21.25	1,900.40	Industrial	3.53%
▼ ATACOB1 PE**	S/.	0.17	0.00%	0.00%	13.70%	20.29%	90.00%	29	1.09	0.00	-	42.94	Mining	1.02%
▼ BACKUS1 PE**	S/.	23.00	-1.71%	-4.92%	2.22%	14.14%	85.00%	103,315	0.54	1.53	10.41	8,672.20	Industrial	0.82%
▼ BAP PE**	US\$	163.00	-0.34%	1.88%	6.08%	1.49%	100.00%	543,967	1.67	5.40	-	15,384.32	Diverse	5.82%
▲ BVN PE**	US\$	11.48	7.39%	11.24%	9.33%	-4.33%	95.00%	1,408,275	1.23	0.00	-	3,164.28	Mining	5.88%
▲ CASAGRC1 PE**	S/.	6.30	2.44%	1.61%	8.62%	32.63%	90.00%	39,583	0.61	3.59	11.31	145.29	Agricultural	1.31%
▼ BBVAC1 PE**	S/.	2.46	-1.99%	-0.81%	8.37%	13.36%	95.00%	11,983	0.69	3.51	25.75	4,397.47	Finance	2.85%
▲ CORARE1 PE**	S/.	1.15	2.68%	0.00%	29.21%	29.21%	100.00%	5,069	0.58	6.07	6.86	416.55	Industrial	1.72%
- CPACASC1 PE**	S/.	6.15	0.00%	1.65%	5.13%	16.04%	100.00%	35,709	0.59	3.74	43.93	781.52	Industrial	2.38%
- CVERDEC1 PE**	US\$	27.00	3.65%	12.50%	23.91%	29.06%	100.00%	604,829	0.83	0.00	43.89	9,451.51	Mining	5.25%
- ENGEPEC1 PE**	S/.	2.50	2.04%	4.17%	17.37%	25.00%	80.00%	90,976	0.49	8.80	15.28	1,943.02	Public Services	1.44%
- ENDISPC1**	S/.	6.00	0.00%	-4.00%	8.70%	11.11%	90.00%	5,749	0.48	0.00	14.07	1,048.98	Public Services	0.98%
- FERREYC1 PE**	S/.	2.07	0.00%	2.99%	2.99%	18.97%	100.00%	151,348	0.61	3.70	13.77	552.95	Diverse	4.90%
- AENZAC1 PE**	S/.	1.72	0.00%	0.00%	-2.82%	-1.15%	100.00%	108,337	0.82	0.00	-	410.60	Diverse	4.05%
▼ IFS PE**	US\$	34.50	-0.29%	6.15%	6.91%	11.51%	100.00%	99,622	1.35	5.07	37.96	3,982.95	Diverse	7.22%
- INRETC1 PE**	US\$	43.00	0.00%	0.00%	-2.71%	9.69%	100.00%	4,300	0.61	1.31	35.21	4,420.71	Diverse	5.28%
▼ LUSURC1 PE**	S/.	23.18	-3.42%	-16.01%	-19.23%	-9.10%	95.00%	22,733	0.54	3.01	22.75	3,090.36	Public Services	1.81%
▲ MINSUR1 PE**	S/.	3.16	3.61%	17.91%	54.15%	70.81%	95.00%	110,996	0.79	0.00	-	2,494.26	Mining	3.09%
▲ PML PE**	US\$	0.15	0.00%	5.63%	3.45%	41.51%	75.00%	28,450	1.49	0.00	-	39.63	Mining	2.12%
▼ RELAPAC1 PE**	S/.	0.13	-2.31%	38.04%	78.87%	84.06%	100.00%	219,482	0.38	0.00	-	289.26	Industrial	2.12%
▲ SCCO PE**	US\$	82.40	4.97%	14.92%	16.14%	25.04%	85.00%	90,569	0.76	2.06	38.30	63,701.24	Mining	2.14%
- SIDERC1 PE**	S/.	1.01	0.00%	1.00%	14.77%	18.82%	95.00%	20,198	0.84	33.89	12.00	339.55	Industrial	1.43%
▲ TV PE**	US\$	0.18	5.88%	0.00%	1.69%	22.45%	100.00%	7,892	1.50	0.00	-	178.04	Mining	2.93%
▲ UNACEMC1 PE**	S/.	1.87	0.54%	1.08%	4.47%	20.65%	100.00%	48,760	0.80	0.70	51.42	930.84	Industrial	3.00%
▲ VOLCABC1 PE**	S/.	0.77	1.32%	-3.75%	37.50%	48.08%	100.00%	319,244	0.89	0.00	-	859.40	Mining	5.90%
- NEXAPEC1 PE**	S/.	3.95	0.00%	-1.25%	27.83%	39.58%	90.00%	8,939	1.07	0.00	-	1,429.73	Mining	1.56%

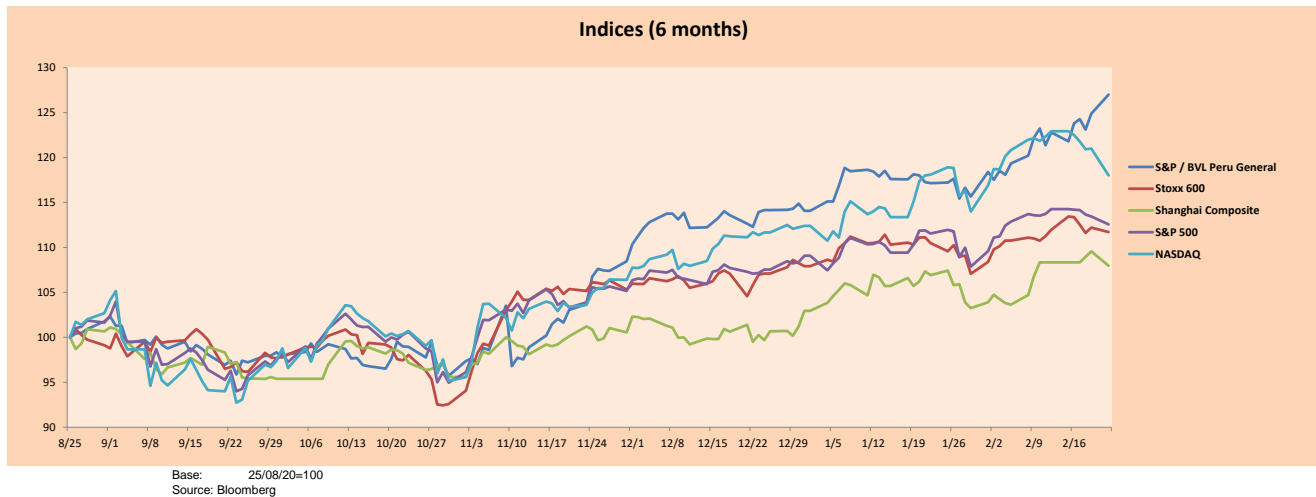
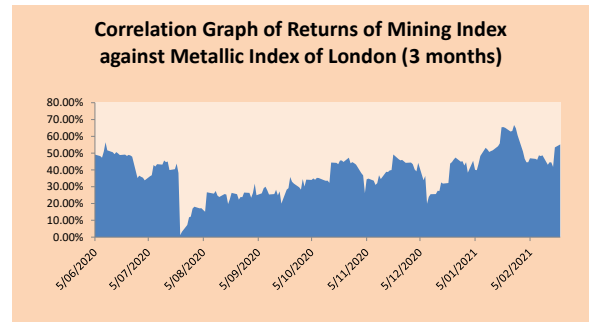
Quantity of shares: 26
 Source: Bloomberg, Economática
 * Bloomberg Industry Classification System
 ** PER is used in the stock market and original currency of the instrument
 *Legend: Variation 1D: 1 Day; 5D: 5 Days; 1M: 1 Month; YTD: Var.% 12/31/20 to date

Sectorial Indices

	Close	1D*	5D*	30D*	YTD*	Beta
▲ S&P/BVLMining	472.29	5.11%	12.76%	18.07%	21.12%	0.84
▼ S&P/BVLConsumer	1,227.58	-0.06%	-1.38%	-0.82%	12.76%	0.38
▲ S&P/BVLIndustrials	219.65	0.17%	1.89%	4.54%	15.27%	0.51
▲ S&P/BVLFinancials	1,072.60	-0.32%	2.46%	6.72%	3.74%	1.78
▲ S&P/BVLConstruction	236.50	0.28%	0.99%	4.44%	13.09%	0.54
▼ S&P/BVLPublicSvcs	637.24	-0.73%	-5.79%	-3.43%	3.77%	0.15
▼ S&P/BVLElectricUtil	622.11	-0.73%	-5.79%	-3.43%	3.77%	0.15

S&P/BVLConstructionTRPEN

*Legend: Variation 1D: 1 Day; 5D: 5 Days; 1M: 1 Month; YTD: Var.% 12/31/20 to date



Capital Market Laboratory Coordinator: Economist Bruno Bellido
 Collaboration: Piero Best, Maria Camarena, Alonso Stephen Hernández and Adrian Paredes
 email: pulsohorsatil@ulima.edu.pe
 facebook: www.facebook.com/pulsohorsatil.ul

The content of this document is just for informational purposes. The information and opinions expressed should not be consider as recommendations for future decisions. Under any circumstances, the Capital Market Laboratory of University of Lima will be responsible for the use of the statements in this document.

SOVEREIGN RATING

RISK RATINGS

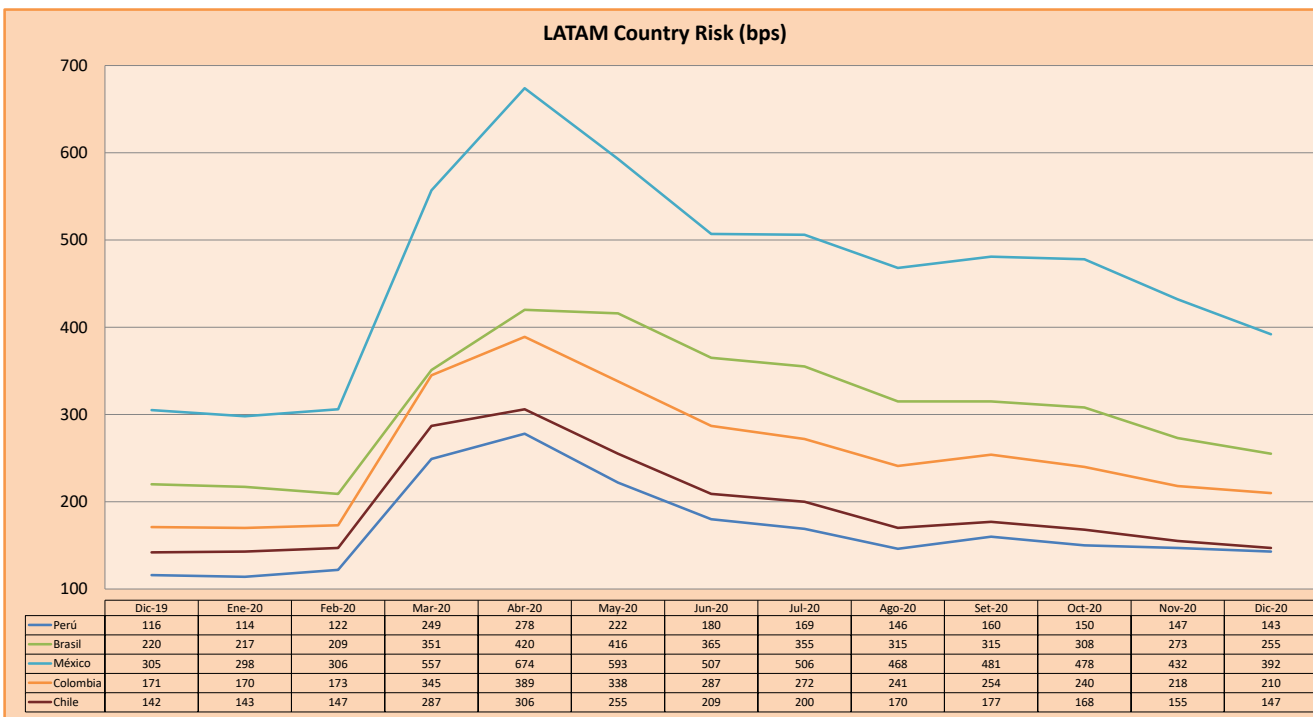
Moody's	S&P	Fitch	
Aaa	AAA	AAA	Prime
Aa1	AA+	AA+	High credit quality
Aa2	AA	AA	
Aa3	AA-	AA-	
A1	A+	A+	Medium-high grade, with low credit risk
A2	A	A	
A3	A-	A-	
Baa1	BBB+	BBB+	Moderate Credit Risk
Baa2	BBB	BBB	
Baa3	BBB-	BBB-	
Ba1	BB+	BB+	It has speculative elements and it is subject to substantial credit risk
Ba2	BB	BB	
Ba3	BB-	BB-	
B1	B+	B+	It is considered speculative and it has high credit risk
B2	B	B	
B3	B-	B-	
Caa1	CCC+		Bad credit conditions and it is subject to high credit risk
Caa2	CCC		
Caa3	CCC-	CCC	
Ca	C		Very close to default or in default
		DDD	
C	D	DD D	

Source: Bloomberg

Latin America Credit Rating			
Clasificadora de riesgo			
Country	Moody's	Fitch	S&P
Peru	A3	BBB+	BBB+
México	Ba2	BB-	BB-
Venezuela	C	WD	SD
Brazil	Ba2	BB-	BB-
Colombia	Baa2	BBB-	BBB-
Chile	A1	A-	A+
Argentina	Ca	WD	CCC+
Panama	Baa1	BBB-	BBB

Source: Bloomberg

LATAM Country Risk (bps)



Source: BCRP

Capital Market Laboratory Coordinator: Economist Bruno Bellido
Collaboration: Piero Best, Maria Camarena, Alonso Stephen Hernández and Adrian Paredes
email: pulsobursatil@ulima.edu.pe
facebook: www.facebook.com/pulsobursatil.ul