

# PULSO BURSÁTIL

FACULTAD DE CIENCIAS EMPRESARIALES Y ECONÓMICAS  
CARRERA DE ECONOMÍA  
LABORATORIO DE MERCADO DE CAPITALES

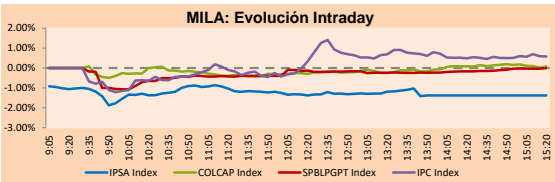


## MILA

Lima, February 23, 2021

Main Indexes	Close	1 D	5 D	1 M	YTD	Cap. Burs. (US\$ bill)
▼ IPSA (Chile)	4,489.21	-1.75%	-3.52%	1.83%	9.24%	124.53
▼ IGPA (Chile)	22,709.56	-1.61%	-3.20%	1.83%	9.66%	155.16
▲ COLSC (Colombia)	1,069.17	-0.35%	-0.61%	-1.89%	0.96%	5.83
▲ COLCAP (Colombia)	1,355.24	0.22%	-0.58%	-4.49%	-5.75%	80.89
- S&P/BVL (Perú)*	23,179.52	0.00%	2.58%	8.40%	11.32%	122.57
- S&P/BVL SEL (Perú)	613.23	0.41%	2.15%	5.83%	11.21%	100.15
▲ S&P/BVL LIMA 25	29,981.27	0.52%	2.00%	10.99%	18.98%	121.54
▲ IPC (México)	45,268.33	0.72%	1.27%	1.31%	2.73%	281.75
▼ S&P MILA 40	552.32	-1.10%	-0.24%	2.27%	3.31%	5,785.01

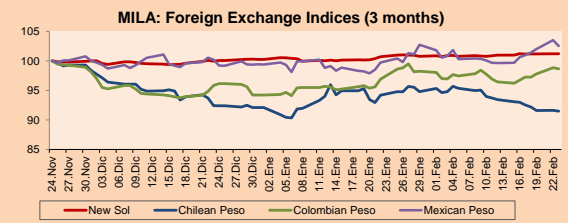
\*Legend: Variation 1D: 1 day; 5D: 5 days; 1M: 1 Month; YTD: Var% 12/31/20 to date



Source: Bloomberg

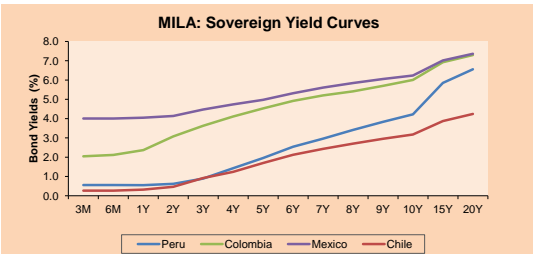
Currency	Price	1D*	5D*	30 D*	YTD*
- New Sol (PEN)	3,6525	0.00%	-0.02%	0.50%	0.95%
▼ Chilean Peso (CLP)	707.09	-0.15%	-1.60%	-2.88%	-0.66%
▼ Colombian Peso (COP)	3,590.88	-0.19%	1.97%	1.81%	4.70%
▼ Mexican Peso (MXN)	20.53	-0.96%	1.87%	2.79%	3.10%

\*Legend: Variation 1D: 1 day; 5D: 5 days; 1M: 1 Month; YTD: Var% 12/31/20 to date



Base: 24/11/20=100  
Source: Bloomberg

Fixed Income	Currency	Price	Bid Yield (%)	Ask Yield (%)	Duration
PERU 7.35 07/21/25	USD	126.3	1.25	1.16	3.88
PERU 4.125 08/25/27	USD	114.717	1.76	1.69	5.83
PERU 8.75 11/21/33	USD	160.482	3.04	2.96	8.87
PERU 6.55 03/14/37	USD	141.166	3.28	3.20	10.51
PERU 5.625 11/18/2050	USD	140.374	3.47	3.42	16.94
CHILE 2.25 10/30/22	USD	103.147	0.50	0.24	1.64
CHILE 3.125 01/21/26	USD	109.7	1.14	1.04	4.59
CHILE 3.625 10/30/42	USD	107.074	3.19	3.15	15.54
COLOM 11.85 03/09/28	USD	159.716	2.65	2.42	5.22
COLOM 10.375 01/28/33	USD	160.2	4.10	3.87	8.04
COLOM 7.375 09/18/37	USD	136.152	4.35	4.26	10.54
COLOM 6.125 01/18/41	USD	123.527	4.38	4.31	12.57
MEX 4 10/02/23	USD	123.527	4.378	4.314	12.57
MEX5.55 01/45	USD	120.586	4.20	4.16	14.42



Source: Bloomberg

### Equity

Largest gains	Exchange	Currency	Price	▲ %
AERO DEL SURES-B	Mexico	MXN	369.35	4.66
INRETAIL PERU CO	Peru	USD	45.00	4.65
WALMART DE MEXIC	Mexico	MXN	62.75	4.05
GRUPO F BANORT-O	Mexico	MXN	110.28	3.70
GRUPO CARSO-A1	Mexico	MXN	50.86	3.27

Per Turnover	Exchange	Amount (US\$)
SOQUIMICH-B	Chile	130,676,604
GRUPO MEXICO-B	Mexico	77,459,551
WALMART DE MEXIC	Mexico	58,660,348
GRUPO F BANORT-O	Mexico	44,064,971
AMERICA MOVIL-L	Mexico	28,467,553

Largest losses	Exchange	Currency	Price	▼ %
SOUTHERN COPPER	Peru	USD	79	-4.13
BANCO CRED INVER	Chile	CLP	31600	-3.73
CMPC	Chile	CLP	2106.1	-3.52
SOQUIMICH-B	Chile	CLP	39600	-3.19
KIMBERLY-CLA M-A	Mexico	MXN	33.6	-2.86

Per Volume	Exchange	Volume
ITAU CORPBANCA	Chile	156,826,152
ENEL CHILE SA	Chile	137,903,192
ENEL AMERICAS SA	Chile	84,825,290
BANCO SANTANDER	Chile	79,393,305
COLBUN SA	Chile	44,856,389

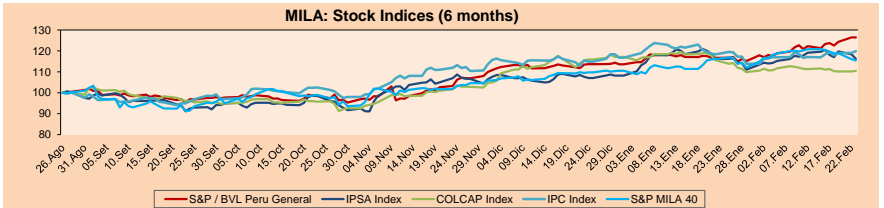
### MILA

Peru: The General Index of the BVL ended today's session with a positive result of +0.00%. The index maintains an annual accumulated positive trend of +11.32% in local currency, while the adjusted return in dollars amounts to +10.27%. Then, the S&P / BVL Peru SEL changed by +0.41% while the S&P / BVL LIMA 25 by +0.52%. The PEN spot reached 5 / 3.6525. Headline: Given the lack of access to credit in the informal financial system, mypes resorted to lenders who charge rates of up to 1,000% and have illegal collection methods

Chile: The IPSA index ended the day with a negative return of -1.75%. The most affected sectors of the day were Finance (-1.24%) and Basic Products (-1.35%). The shares with the worst performance were Banco de Crédito e Inversión (-3.73%) and Empresas CMPC SA (-3.52%). Headline: Chile wins the race to attract foreign investment in Latin America: surpasses Uruguay and Costa Rica

Colombia: The COLCAP index closed today with a positive return of +0.22%. The sectors that benefited the most from the session were Energy (+2.21%) and Finance (+0.35%). The stocks with the best performance were Ecopetrol SA (+2.60%) and Banco de Bogotá SA (+2.37%). Headline: The UN asks Colombia to comply with the peace agreement with the FARC and more actions to stop the violence

Mexico: The IPC index closed the day with a positive return of +0.72%. The sectors with the highest performance on the day were Real Estate (+2.97%) and Industrial (+2.38%). The stocks with the best performance were Grupo Cementos de Chihuahua SA (+5.47%) and Grupo Aeroportuario del Sureste SA de CV (+4.66%). Headline: Mexicana América Móvil will sell exchangeable bonds of the Dutch KPN for US \$ 2,700M

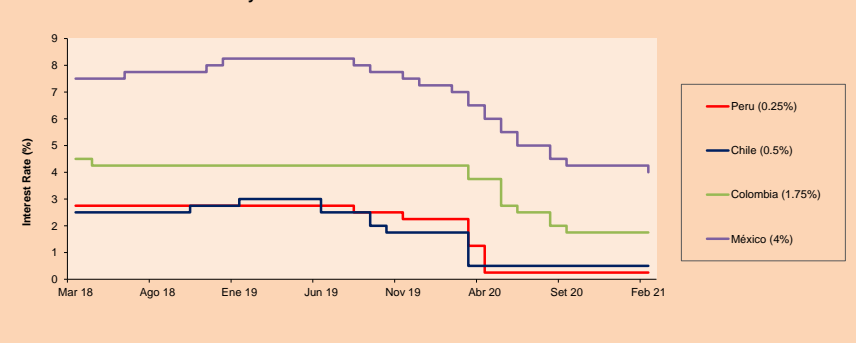


Base: 27/08/20=100  
Source: Bloomberg

### ETFs

	Curr.	Close	1D	5D	30 D	YTD	Exchange
▲ iShares MSCI All Peru Caped Index Fund	USD	38.97	0.65%	3.34%	10.52%	12.37%	NYSE Arca
▲ iShares MSCI All Chile Caped Index Fund	USD	32.63	0.46%	-0.73%	3.23%	8.01%	Cboe BZX
▼ Global X MSCI Colombia	USD	10.365	-0.05%	-2.12%	-5.17%	-8.76%	NYSE Arca
▲ iShares MSCI Mexico Capped	USD	41.91	2.24%	-1.20%	-2.44%	-2.51%	NYSE Arca
▲ iShares MSCI Emerging Markets	USD	56.09	0.45%	-3.19%	0.47%	8.55%	NYSE Arca
▲ Vanguard FTSE Emerging Markets	USD	54.78	0.57%	-2.79%	1.44%	9.32%	NYSE Arca
▲ iShares Core MSCI Emerging Markets	USD	67.42	0.51%	-2.94%	0.85%	8.67%	NYSE Arca
▲ iShares JP Morgan Emerging Markets Bonds	USD	63.99	0.44%	-1.81%	0.91%	4.76%	Cboe BZX
▼ Morgan Stanley Emerging Markets Domestic	USD	6.11	-0.49%	-1.77%	-0.97%	-2.86%	New York

### MILA: Policy Rate



Source: Bloomberg

Capital Market Laboratory Coordinator: Economist Bruno Bellido  
Collaboration: Piero Best, María Camarena, Alonso Stephen Hernández and Adrian Paredes  
email: pulsobursatil@ulima.edu.pe  
facebook: www.facebook.com/pulsobursatil.ul

The content of this document is just for informational purposes. The information and opinions expressed should not be considered as recommendations for future decisions. Under any circumstances, the Capital Market Laboratory of University of Lima will be responsible for the use of the statements in this document.

# PULSO BURSÁTIL

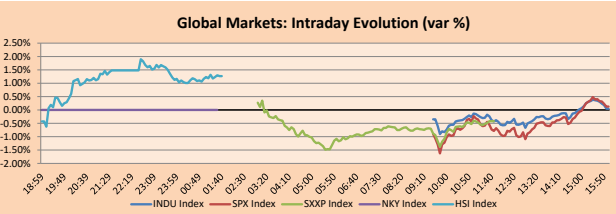
FACULTAD DE CIENCIAS EMPRESARIALES Y ECONÓMICAS  
CARRERA DE ECONOMÍA  
LABORATORIO DE MERCADO DE CAPITALES



## WORLD

Main Indices	Close	1 D*	5 D*	1 M*	YTD*	Market Cap. (US\$ Mill.)
▲ Dow Jones (USA)	31,537.35	0.05%	0.05%	1.74%	3.04%	9,665,671
▲ Standard & Poor's 500 (EEUU)	3,881.37	0.13%	-1.30%	1.04%	3.34%	34,262,304
▲ NASDAQ Composite (USA)	13,465.20	-0.50%	-4.15%	-0.57%	4.48%	21,938,049
▼ Stoxx EUROPE 600 (Europe)	411.32	-0.42%	-1.88%	1.06%	3.47%	9,306,191
▼ DAX (Germany)	13,864.81	-0.61%	-1.42%	0.62%	1.75%	1,034,459
▲ FTSE 100 (United Kingdom)	6,625.94	0.21%	-1.92%	-1.04%	2.55%	1,359,559
▲ CAC 40 (France)	5,779.84	0.22%	-0.12%	4.04%	4.19%	1,552,745
▲ IBEX 35 (Spain)	8,252.10	1.72%	1.21%	2.75%	2.27%	447,030
▲ MSCI AC Asia Pacific Index	216.67	0.15%	-1.79%	1.68%	8.38%	27,196,327
▲ HANG SENG (Hong Kong)	30,632.64	1.03%	-0.37%	0.52%	9.13%	4,644,238
▲ SHANGHAI SE Comp. (China)	3,636.36	-0.17%	0.91%	-1.18%	2.62%	6,914,761
▲ NIKKEI 225 (Japan)	30,156.03	0.46%	0.24%	3.63%	8.12%	4,111,682
▲ S&P / ASX 200 (Australia)	6,839.17	0.86%	-1.13%	-0.33%	2.90%	1,713,019
▲ KOSPI (South Korea)	3,070.09	0.72%	1.27%	-4.64%	4.23%	1,829,637

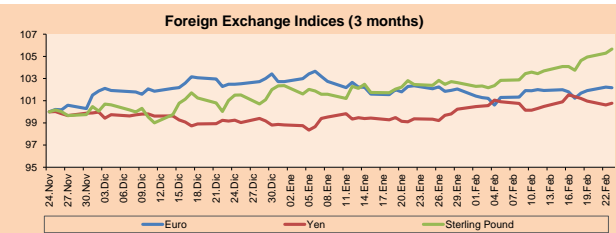
\*Legend: Variation 1D: 1 Day; 5D: 5 Days; 1M: 1 Month; YTD: Var.% 12/31/20 to date



Source: Bloomberg

Currency	Price	1 D*	5 D*	1 M*	YTD*
▼ Euro	1.2150	-0.06%	0.36%	-0.17%	-0.54%
▲ Yen	105.2500	0.16%	-0.75%	1.42%	1.94%
▲ Sterling Pound	1.4113	0.36%	1.51%	3.12%	3.24%
▲ Yuan	6.4668	0.03%	0.13%	-0.23%	-0.93%
▲ Hong Kong Dollar	7.7538	0.00%	0.02%	0.02%	0.01%
▼ Brazilian Real	5.4415	-0.34%	1.19%	-0.53%	4.67%
▲ Argentine Peso	89.5376	0.11%	1.44%	3.43%	6.41%

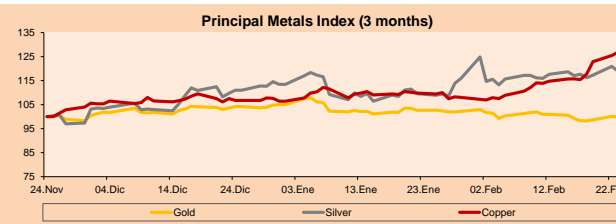
\*Legend: Variation 1D: 1 Day; 5D: 5 Days; 1M: 1 Month; YTD: Var.% 12/31/20 to date



Base: 24/11/20=100  
Source: Bloomberg

Commodities	Close	1 D*	5 D*	1 M*	YTD*
▼ Oro (US\$ Oz. T) (LME)	1,805.73	-0.22%	0.63%	-2.69%	-4.89%
▼ Plata (US\$ Oz. T) (LME)	27.67	+1.65%	1.58%	8.55%	4.82%
▲ Cobre (US\$ TM) (LME)	9,231.50	1.06%	9.59%	15.49%	19.13%
▼ Zinc (US\$ TM) (LME)	2,840.25	-1.50%	1.09%	5.47%	4.06%
▼ Petróleo WTI (US\$ Barril) (NYM)	61.67	-0.05%	2.65%	18.16%	26.66%
▼ Estanho (US\$ TM) (LME)	28,270.00	-2.70%	4.20%	26.32%	37.60%
▼ Plomo (US\$ TM) (LME)	2,101.00	-1.63%	0.37%	3.65%	6.34%
▼ Acaño #11 (US\$ Libra) (NYB-ICE)	17.01	-2.47%	6.85%	12.80%	15.87%
▲ Cacao (US\$ TM) (NYB-ICE)	2,499.00	0.36%	2.92%	0.52%	-1.42%
▲ Café Arábica (US\$ TM) (NYB-ICE)	138.30	2.48%	9.59%	9.59%	6.26%

\*Leyenda: Variación 1D: 1 Día; 5D: 5 Días; 1M: 1 Mes; YTD: Var.% 31/12/20 a la fecha



Base: 24/11/20=100  
Source: Bloomberg

## Equity

Germany (Stocks from DAX Index)

Largest gains	Curr.	Price	▲%	Exchange	Largest losses	Curr.	Price	▼%	Exchange
LIN GY	EUR	209.9	1.60	Xetra	IFX GY	EUR	34.99	-3.14	Xetra
DBK GY	EUR	9.93	1.32	Xetra	BMW GY	EUR	69.32	-2.74	Xetra
EOAN GY	EUR	8.65	1.19	Xetra	DAI GY	EUR	65.33	-2.20	Xetra
BEI GY	EUR	85.28	0.85	Xetra	HEI GY	EUR	65.38	-1.89	Xetra

Europe (Stocks from STOXX EUROPE 600)

Largest gains	Curr.	Price	▲%	Exchange	Largest losses	Curr.	Price	▼%	Exchange
MRL SQ	EUR	8.61	6.30	Soc.Bol SIBE	RAA GY	EUR	713	-9.63	Xetra
AMS SQ	EUR	59.2	5.87	Soc.Bol SIBE	ADVEN NA	EUR	1980	-7.99	EN Amsterdam
UTG LN	GBP	1009	5.82	London	GXI GY	EUR	85.45	-6.82	Xetra
ITX SQ	EUR	27.45	5.46	Soc.Bol SIBE	NEL NO	NOK	25.22	-6.73	Oslo

## Global Overview:

### United States:

US markets closed the day with mixed returns, as the S&P 500 and DJIA turned positive at the close of the session despite growth stocks dragging the broader market. Growth stocks, which led when restrictions were imposed by the pandemic, drove the market lower as investors turn to stocks benefiting from the economic reopening. Regarding the FED statement in Congress, President Jerome Powell denied fears that the economic aid provided will raise the risk of higher inflation. He also stressed that the accommodative monetary policy would continue in force for "some time," according to Reuters. He also added that the economic recovery was "uneven and far from complete". In individual stocks, Tesla Inc -2.2% hit by the big sell-off in tech stocks and the fall of bitcoin, which plunged 12%. Currently, the company has invested US \$ 1.5 billion in the cryptocurrency. Riot Blockchain Inc -24.6% and Marathon Patent Group Inc -23%. Thus, the DJIA +0.05% and S&P 500 +0.13% rose, while the NASDAQ -0.5% it fell.

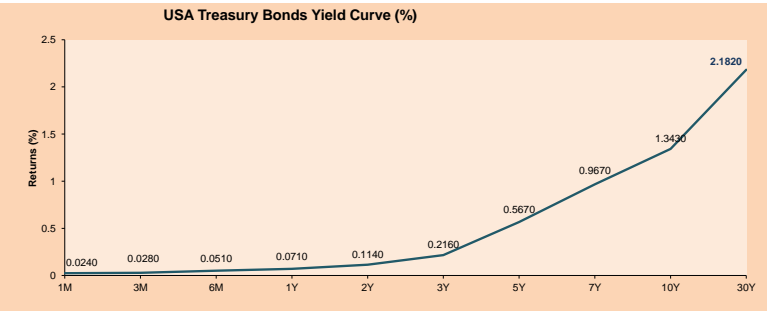
### Europe:

The main European markets closed mostly lower following the increase in U.S. bond yields and optimism due to the progress of vaccination campaigns on the continent. Thus, the Stoxx 600 ended the session negative dragged down for the second consecutive day by technology stocks -2.14% and healthcare -1.08% due to fears related to higher interest rates and safe haven in proycylical stocks. In individual stocks Rational fell -9.60% following the issuance of its lower-than-expected sales forecast. On the other hand, in the UK, the FTSE 100 experienced positive returns despite the rise in the unemployment rate announced today due to expectations of the end of confinement starting on March 8. This boosted international vacation bookings by up to 600%, according to Reuters, having a positive impact on related sectors. Finally, the German index returned a drop in the technology -1.63% and industrial -1.86% sectors. Thus the FTSE 100 +0.21%, DAX -0.61%, CAC 40 +0.22%, IBEX 35 +1.72% Stoxx 600 -0.42% closed mixed.

### Asia:

Asian markets ended trading with mixed results, as investor expectations focused on upcoming comments from the Fed and rising bond yields. Economic agents formed expectations about the following testimony of the FED. In the region, benchmark 10-year bond yields have hit multi-month records. The current rise has restrained the rally for stocks in Asia, according to Reuters. Margaret Yang from DailyFX indicated that "Powell's testimony will be watched closely to see how tolerant the Fed is in light of rising yields and how they will address a strengthened inflation outlook." In China, markets closed lower, dragged down by tech stocks and fears about a tightening of government policies. However, losses were reduced thanks to gains in financial stocks. Zheng Zichun from AVIC Securities noted that "the People's Bank of China would refrain from a sudden and rapid tightening in order to provide stability to the market." Finally, the Japanese markets were closed for a national holiday. Thus, the Hang Seng +1.03%, S & P / ASX 200 +0.86% and NIFTY 50 +0.22% rose; on the other hand, the Shanghai Composite -0.17% and Shenzhen -0.61% fell, among other indices.

ETFs	Curr.	Close	1D	5D	30 D	YTD	Exchange
SPDR S&P 500 ETF TRUST	USD	367.50	0.12%	-1.22%	1.21%	3.64%	NYSE Arca
ISHARES MSCI EMERGING MARKET	USD	56.09	0.45%	-3.19%	0.47%	8.55%	NYSE Arca
ISHARES IBOXX HIGH YLD CORP	USD	87.44	0.24%	-0.23%	0.16%	0.16%	NYSE Arca
FINANCIAL SELECT SECTOR SPDR	USD	32.91	0.61%	2.65%	8.47%	11.64%	NYSE Arca
VANECK GOLD MINERS	USD	33.44	-2.25%	-1.91%	-5.08%	-7.16%	NYSE Arca
ISHARES RUSSELL 2000 ETF	USD	221.76	-0.88%	-1.80%	3.14%	13.11%	NYSE Arca
SPDR GOLD SHARES	USD	169.12	-0.23%	0.52%	-2.75%	-5.18%	NYSE Arca
ISHARES 20+ YEAR TREASURY BO	USD	141.77	-0.29%	-2.14%	-6.66%	-10.12%	NASDAQ GM
INVESCO QQQ TRUST SERIES 1	USD	321.48	-0.30%	-4.19%	-1.21%	2.47%	NASDAQ GM
ISHARES NASDAQ BIOTECHNOLOGY	USD	159.87	-1.40%	-4.28%	-2.93%	5.53%	NASDAQ GM
ENERGY SELECT SECTOR SPDR	USD	48.57	1.65%	6.07%	15.45%	28.15%	NYSE Arca
PROSHARES ULTRA VIX ST FLUTUR	USD	8.79	-6.09%	-8.05%	-13.74%	-17.46%	Cboe BZX
UNITED STATES OIL FUND LP	USD	41.62	0.82%	2.89%	18.14%	26.08%	NYSE Arca
ISHARES MSCI BRAZIL ETF	USD	34.38	2.72%	-5.11%	-1.88%	-7.26%	NYSE Arca
SPDR S&P OIL & GAS EXP & PR	USD	81.65	2.15%	4.45%	19.99%	39.57%	NYSE Arca
UTILITIES SELECT SECTOR SPDR	USD	60.71	0.83%	-1.95%	-3.39%	-3.17%	NYSE Arca
ISHARES US REAL ESTATE ETF	USD	89.74	0.56%	1.22%	4.39%	4.78%	NYSE Arca
SPDR S&P BIOTECH ETF	USD	150.83	-2.24%	-5.83%	-1.13%	7.14%	NYSE Arca
ISHARES IBOXX INVESTMENT GRA	USD	132.44	0.08%	-0.96%	-2.40%	-4.12%	NYSE Arca
ISHARES JIP MORGAN USD EMERGI	USD	111.36	0.12%	-0.65%	-2.19%	-3.93%	NASDAQ GM
REAL ESTATE SELECT SECT SPDR	USD	38.45	0.37%	1.29%	4.43%	5.17%	NYSE Arca
ISHARES CHINA LARGE-CAP ETF	USD	51.81	0.33%	-3.36%	0.19%	11.59%	NYSE Arca
CONSUMER STAPLES SPDR	USD	65.09	0.14%	-0.73%	0.03%	-3.50%	NYSE Arca
VANECK JR GOLD MINERS	USD	49.34	-1.93%	0.14%	-1.99%	-0.93%	NYSE Arca
SPDR BBG BARC HIGH YIELD BND	USD	109.30	-0.33%	-0.09%	0.33%	0.33%	NYSE Arca
VANGUARD REAL ESTATE ETF	USD	90.22	0.62%	1.48%	5.19%	6.23%	NYSE Arca
GRAYSCALE BITCOIN TRUST BTC	USD	45.84	-14.32%	-8.88%	33.06%	43.25%	OTC US



Source: Bloomberg

Capital Market Laboratory Coordinator: Economist Bruno Bellido  
Collaboration: Piero Best, Maria Camarena, Alonso Stephen Hernandez and Adrian Paredes  
email: pulsoBursatil@ulima.edu.pe  
facebook: www.facebook.com/pulsoBursatil.ulima

LIMA

Stocks

Ticker	Currency	Price	1D*	5D*	30D*	YTD*	Frequency	Volume (US\$)	Beta	Dividend Yield (%)	Price Earning	Market Cap. (M US\$)	Economic Sector*	Index Weight	
-	ALICORC1 PE**	S/.	8.15	0.00%	-1.18%	-1.89%	0.96%	100.00%	1,091,410	0.68	3.07	21.28	1,902.72	Industrial	3.53%
▲	ATACOCB1 PE**	S/.	0.17	2.41%	2.41%	16.44%	23.19%	90.00%	19,169	1.09	0.00	-	43.97	Mining	1.02%
-	BACKUSI1 PE**	S/.	23.00	0.00%	-4.56%	2.22%	14.14%	85.00%	22,944	0.54	1.53	10.41	8,672.20	Industrial	0.82%
▲	BAP PE**	US\$	163.60	0.37%	-0.91%	6.47%	1.87%	100.00%	647,736	1.65	5.38	-	15,440.95	Diverse	5.82%
▼	BVN PE**	US\$	11.45	-0.26%	10.95%	9.05%	-4.58%	95.00%	508,076	1.26	0.00	-	3,156.02	Mining	5.88%
▼	CASAGRC1 PE**	S/.	6.15	-2.38%	2.50%	6.03%	29.47%	90.00%	25,804	0.62	3.67	11.04	141.83	Agricultural	1.31%
▼	BBVAC1 PE**	S/.	2.45	-0.41%	-1.61%	7.93%	12.90%	95.00%	25,909	0.68	3.52	25.64	4,379.59	Finance	2.85%
▼	CORAREI1 PE**	S/.	1.14	-0.87%	-0.87%	28.09%	28.09%	100.00%	11,259	0.59	6.12	6.80	416.00	Industrial	1.72%
-	CPACASC1 PE**	S/.	6.15	0.00%	1.65%	5.13%	16.04%	100.00%	87,012	0.58	3.74	43.93	781.52	Industrial	2.38%
▲	CVERDEC1 PE**	US\$	27.50	1.85%	10.00%	26.20%	31.45%	100.00%	424,480	0.84	0.00	44.70	9,626.54	Mining	5.25%
▼	ENGEPEC1 PE**	S/.	2.48	-0.80%	3.33%	16.43%	24.00%	80.00%	2,556	0.49	8.87	15.16	1,927.48	Public Services	1.44%
▼	ENDISPC1**	S/.	6.00	0.00%	-2.44%	8.70%	11.11%	90.00%	8,570	0.48	0.00	14.07	1,048.98	Public Services	0.98%
▲	FERREYC1 PE**	S/.	2.08	0.46%	0.97%	3.48%	19.54%	100.00%	1,711,426	0.61	3.68	13.83	555.63	Diverse	4.90%
-	AENZAC1 PE**	S/.	1.72	0.00%	0.00%	-2.82%	-1.15%	100.00%	135,010	0.81	0.00	-	410.60	Diverse	4.05%
▲	IFS PE**	US\$	34.85	1.01%	1.01%	8.00%	12.64%	100.00%	31,826	1.33	5.02	38.34	4,023.35	Diverse	7.22%
▲	INRETC1 PE**	US\$	45.00	4.65%	4.65%	1.81%	14.80%	100.00%	3,222,675	0.60	1.25	36.84	4,626.33	Diverse	5.28%
▲	LUSURC1 PE**	S/.	23.20	0.09%	-15.64%	-19.16%	-9.02%	95.00%	160,828	0.52	3.01	22.77	3,093.02	Public Services	1.81%
▼	MINSUR1 PE**	S/.	3.15	-0.32%	8.62%	53.66%	70.27%	95.00%	159,721	1.79	0.00	-	2,486.37	Mining	3.09%
▲	PML PE**	US\$	0.16	6.00%	6.00%	9.66%	50.00%	75.00%	52,988	1.49	0.00	-	42.01	Mining	2.12%
▲	RELAPAC1 PE**	S/.	0.13	1.57%	43.33%	81.69%	86.96%	100.00%	92,138	0.35	0.00	-	293.82	Industrial	2.12%
▲	SCCO PE**	US\$	79.00	-4.13%	8.22%	11.35%	19.88%	85.00%	157,679	0.78	2.15	36.72	61,072.79	Mining	2.14%
▲	SIDERC1 PE**	S/.	1.04	2.97%	0.97%	18.18%	22.35%	95.00%	30,836	0.84	32.91	12.36	349.63	Industrial	1.43%
▼	TV PE**	US\$	0.18	-1.11%	-1.11%	0.56%	21.09%	100.00%	7,731	1.50	0.00	-	176.06	Mining	2.93%
▼	UNACEMC1 PE**	S/.	1.86	-0.53%	1.09%	3.91%	20.00%	100.00%	91,376	0.79	0.70	51.15	925.86	Industrial	3.00%
▲	VOLCABC1 PE**	S/.	0.78	1.30%	0.00%	39.29%	50.00%	100.00%	310,074	0.89	0.00	-	870.56	Mining	5.90%
▲	NEXAPEC1 PE**	S/.	4.05	2.53%	6.58%	31.07%	43.11%	90.00%	36,964	1.07	0.00	-	1,465.60	Mining	1.56%

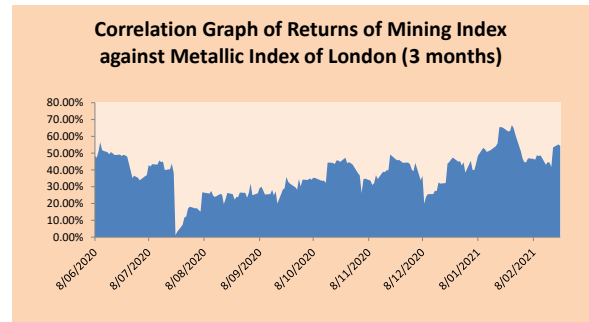
Quantity of shares: 26  
 Source: Bloomberg, Economática  
 \* Bloomberg Industry Classification System  
 \*\* PER is used in the stock market and original currency of the instrument  
 \*Legend: Variation 1D: 1 Day; 5D: 5 Days; 1M: 1 Month; YTD: Var.% 12/31/20 to date

Sectorial Indices

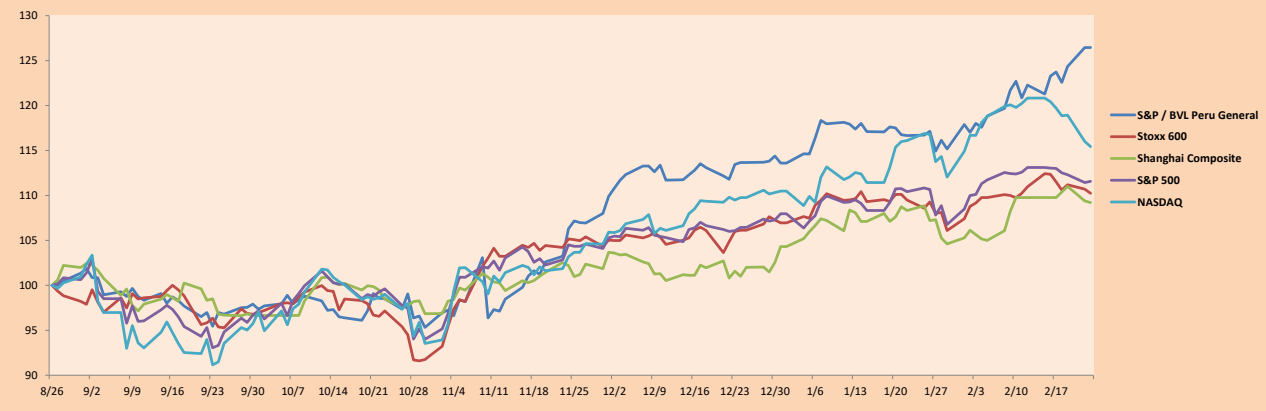
	Close	1D*	5D*	30D*	YTD*	Beta	
▼	S&P/BVLMining	461.13	-2.36%	8.34%	15.28%	18.25%	0.84
▲	S&P/BVLConsumer	1,253.03	2.07%	1.06%	1.24%	15.10%	0.37
▲	S&P/BVLIndustrials	219.75	0.05%	1.33%	4.58%	15.32%	0.51
▲	S&P/BVLFinancials	1,076.85	0.40%	-0.72%	7.14%	4.15%	1.78
▼	S&P/BVLConstruction	236.12	-0.16%	0.96%	4.27%	12.91%	0.54
▲	S&P/BVLPublicSvcs	637.71	0.07%	-5.40%	-3.36%	3.84%	0.15
▲	S&P/BVLElectricUtil	622.57	0.07%	-5.40%	-3.35%	3.84%	0.15

S&P/BVLConstructionTRPEN

\*Legend: Variation 1D: 1 Day; 5D: 5 Days; 1M: 1 Month; YTD: Var.% 12/31/20 to date



Indices (6 months)



Base: 26/08/20=100  
 Source: Bloomberg

Capital Market Laboratory Coordinator: Economist Bruno Bellido  
 Collaboration: Piero Best, Maria Camarena, Alonso Stephen Hernández and Adrian Paredes  
 email: pulsohorsatil@ulima.edu.pe  
 facebook: www.facebook.com/pulsohorsatil.ul

The content of this document is just for informational purposes. The information and opinions expressed should not be consider as recommendations for future decisions. Under any circumstances, the Capital Market Laboratory of University of Lima will be responsible for the use of the statements in this document.

## SOVEREIGN RATING

### RISK RATINGS

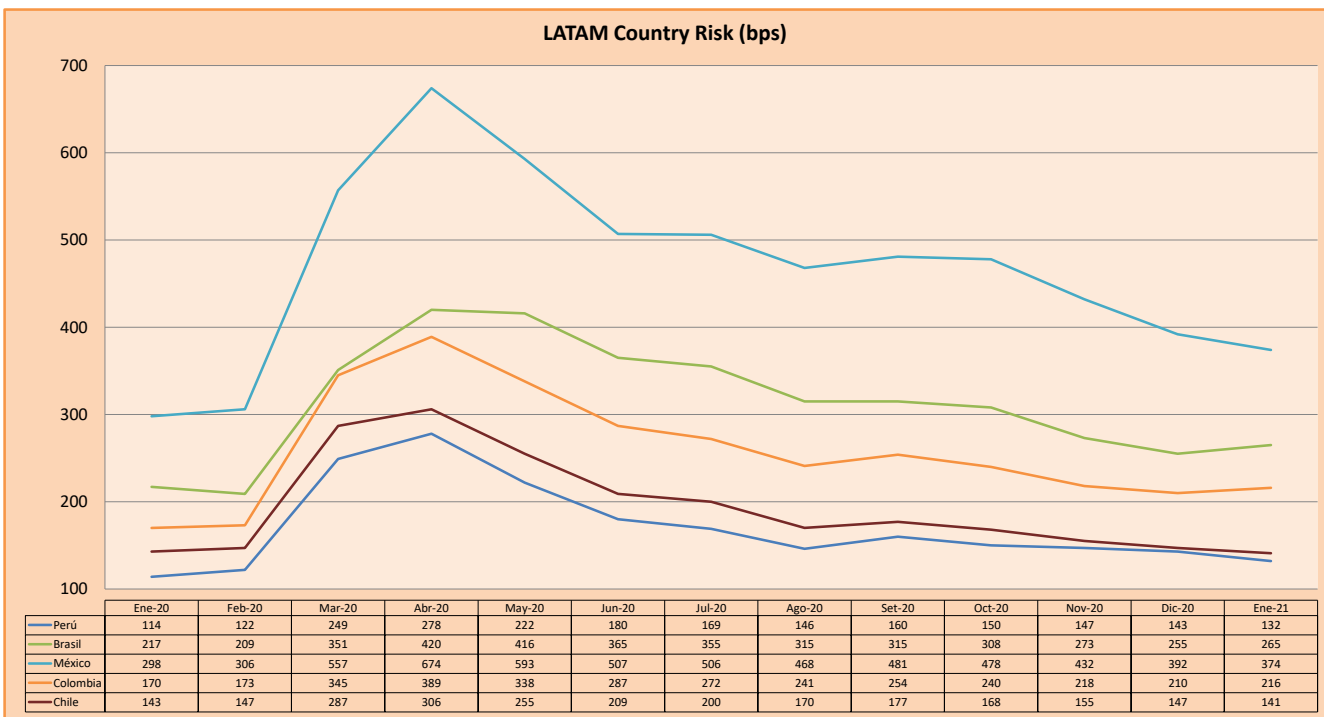
Moody's	S&P	Fitch	
Aaa	AAA	AAA	Prime
Aa1	AA+	AA+	High credit quality
Aa2	AA	AA	
Aa3	AA-	AA-	
A1	A+	A+	Medium-high grade, with low credit risk
A2	A	A	
A3	A-	A-	
Baa1	BBB+	BBB+	Moderate Credit Risk
Baa2	BBB	BBB	
Baa3	BBB-	BBB-	
Ba1	BB+	BB+	It has speculative elements and it is subject to substantial credit risk
Ba2	BB	BB	
Ba3	BB-	BB-	
B1	B+	B+	It is considered speculative and it has high credit risk
B2	B	B	
B3	B-	B-	
Caa1	CCC+		Bad credit conditions and it is subject to high credit risk
Caa2	CCC		
Caa3	CCC-	CCC	
Ca	C		Very close to default or in default
		DDD	
C	D	DD D	

Source: Bloomberg

Latin America Credit Rating			
Clasificadora de riesgo			
Country	Moody's	Fitch	S&P
Peru	A3	BBB+	BBB+
México	Ba2	BB-	BB-
Venezuela	C	WD	SD
Brazil	Ba2	BB-	BB-
Colombia	Baa2	BBB-	BBB-
Chile	A1	A-	A+
Argentina	Ca	WD	CCC+
Panama	Baa1	BBB-	BBB

Source: Bloomberg

### LATAM Country Risk (bps)



Source: BCRP

Capital Market Laboratory Coordinator: Economist Bruno Bellido  
Collaboration: Piero Best, Maria Camarena, Alonso Stephen Hernández and Adrian Paredes  
email: [pulsobursatil@ulima.edu.pe](mailto:pulsobursatil@ulima.edu.pe)  
facebook: [www.facebook.com/pulsobursatil.ul](https://www.facebook.com/pulsobursatil.ul)