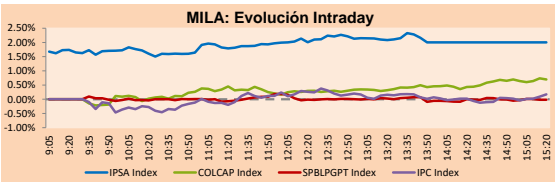


MILA

Lima, February 24, 2021

Main Indexes	Close	1 D	5 D	1 M	YTD	Cap. Burs. (US\$ bill)
▲ IPSA (Chile)	4,576.41	1.94%	0.38%	2.28%	9.91%	127.66
▲ IGPA (Chile)	23,101.81	1.73%	0.32%	2.33%	10.31%	158.61
▼ COLSC (Colombia)	1,068.56	-0.06%	-1.23%	-0.39%	0.90%	5.89
▲ COLCAP (Colombia)	1,370.75	1.14%	0.33%	-2.77%	-5.49%	82.05
▲ S&P/BVL (Perú)*	23,199.68	0.09%	2.28%	8.32%	11.29%	122.33
▼ S&P/BVL SEL (Perú)	611.56	-0.27%	1.41%	5.13%	10.44%	99.64
▲ S&P/BVL LIMA 25	30,092.95	0.37%	2.31%	10.25%	19.14%	121.31
▼ IPC (México)	45,151.38	-0.26%	0.20%	1.16%	3.59%	282.09
▲ S&P MILA 40	562.09	1.77%	1.98%	5.64%	5.14%	5,748.27

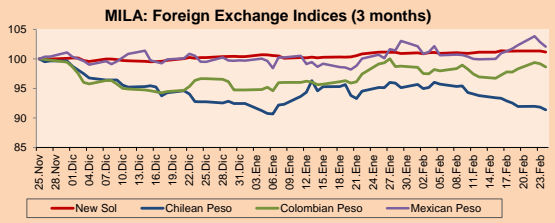
*Legend: Variation 1D: 1 day; 5D: 5 days; 1M: 1 Month; YTD: Var% 12/31/20 to date



Source: Bloomberg

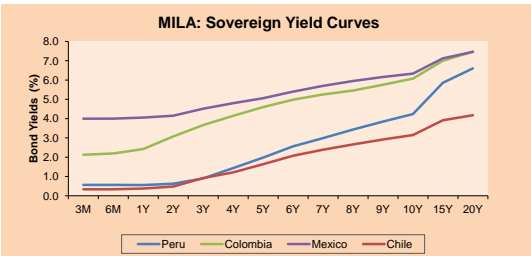
Currency	Price	1D*	5D*	30 D*	YTD*
▼ New Sol (PEN)	3,645.55	-0.19%	-0.17%	0.02%	0.76%
▼ Chilean Peso (CLP)	703.58	-0.50%	-1.61%	-3.96%	-1.15%
▼ Colombian Peso (COP)	3,571.22	-0.55%	0.87%	-0.50%	4.13%
▼ Mexican Peso (MXN)	20.38	-0.75%	0.76%	1.34%	2.33%

*Legend: Variation 1D: 1 day; 5D: 5 days; 1M: 1 Month; YTD: Var% 12/31/20 to date



Base: 25/11/20=100
Source: Bloomberg

Fixed Income	Currency	Price	Bid Yield (%)	Ask Yield (%)	Duration
PERU 7.35 07/21/25	USD	126.143	1.28	1.18	3.88
PERU 4.125 08/25/27	USD	114.525	1.79	1.71	5.83
PERU 8.75 11/21/33	USD	159.839	3.08	3.01	8.86
PERU 6.55 03/14/37	USD	140.498	3.32	3.25	10.51
PERU 5.625 11/18/2050	USD	139.163	3.52	3.48	16.89
CHILE 2.25 10/30/22	USD	103.136	0.50	0.24	1.64
CHILE 3.125 01/21/26	USD	109.634	1.15	1.05	4.59
CHILE 3.625 10/30/42	USD	106.654	3.21	3.18	15.54
COLOM 11.85 03/09/28	USD	159.616	2.75	2.34	5.22
COLOM 10.375 01/28/33	USD	160.233	4.10	3.86	8.04
COLOM 7.375 09/18/37	USD	135.774	4.37	4.29	10.54
COLOM 6.125 01/18/41	USD	122.971	4.41	4.35	12.57
MEX 4 10/02/23	USD	122.971	4.413	4.352	12.57
MEX5.55 01/45	USD	120.071	4.24	4.18	14.40



Source: Bloomberg

Equity

Largest gains	Exchange	Currency	Price	▲ %
CEMEX SAB-CPO	Mexico	MXN	14.01	5.42
PARQUE ARAUCO	Chile	CLP	1250.00	5.36
CENCOSUD SHOPPIN	Chile	CLP	1305.00	4.39
ISA SA	Colombia	COP	23600.00	4.33
FALABELLA SA	Chile	CLP	2970.00	4.25

Per Turnover	Exchange	Amount (US\$)
GRUPO MEXICO-B	Mexico	60,327,420
WALMART DE MEXIC	Mexico	54,100,258
FALABELLA SA	Chile	44,536,357
CEMEX SAB-CPO	Mexico	34,081,404
GRUPO F BANORT-O	Mexico	24,890,050

Largest losses	Exchange	Currency	Price	▼ %
GRUPO MEXICO-B	Mexico	MXN	104.28	-3.70
BOLSA MEXICANA	Mexico	MXN	41.96	-2.89
ENGIE ENERGIA CH	Chile	CLP	830	-2.03
WALMART DE MEXIC	Mexico	MXN	61.54	-1.93
CONCHATORO	Chile	CLP	1118.5	-1.86

Per Volume	Exchange	Volume
ITAU CORPBANCA	Chile	306,624,670
BANCO SANTANDER	Chile	274,024,933
ENEL AMERICAS SA	Chile	130,189,184
ENEL CHILE SA	Chile	120,002,579
BANCO DE CHILE	Chile	61,655,183

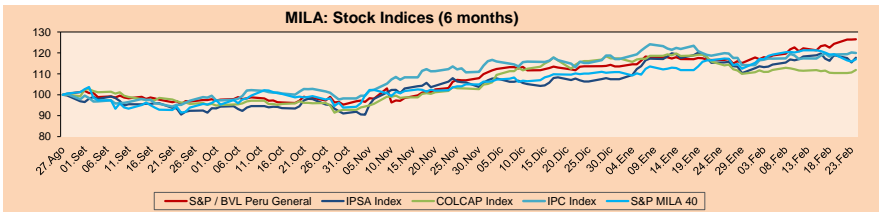
MILA

Peru: The General Index of the BVL ended today's session with a positive result of +0.09%. The index maintains an annual accumulated positive trend of +11.29% in local currency, while the adjusted return in dollars amounts to +10.37%. Then, the S&P / BVL Peru SEL changed by +0.41% while the S&P / BVL LIMA 25 by +0.52%. The PEN spot reached 5 / 3.6455. Headline: Targeted quarantine and reduced capacity subtract about one point from growth

Chile: The IPSA index ended the day with a positive return of +1.94%. The sectors that benefited the most from the session were First Needs Products (+4.24%) and Real Estate Goods (+2.21%). The stocks with the best performance were Parque Arauco SA (+5.36%) and Cencosud Shopping SA (+4.39%). Headline: COVID-19: Chile highlights that it is already third in number of vaccines per inhabitant

Colombia: The COLCAP index closed today with a positive return of +1.14%. The sectors that benefited the most from the session were Energy (+3.09%) and Finance (+0.55%). The stocks with the best performance were Interconexión Eléctrica SA (+4.33%) and Promigas SA ESP (+2.63%). Headline: Fitch says diluted tax reform and pandemic risks in Colombia could affect its rating

Mexico: The IPC index closed the day with a negative return of -0.26%. The sectors with the lowest performance on the day were Industrial (-1.45%) and Basic Products (-0.47%). The worst performing stocks were Grupo México SAB de CV (-3.70%) and Bolsa Mexicana de Valores SA (-2.89%). Headline: Moody's warns of lingering risk in Mexico's sovereign debt, but improves GDP forecast for 2021

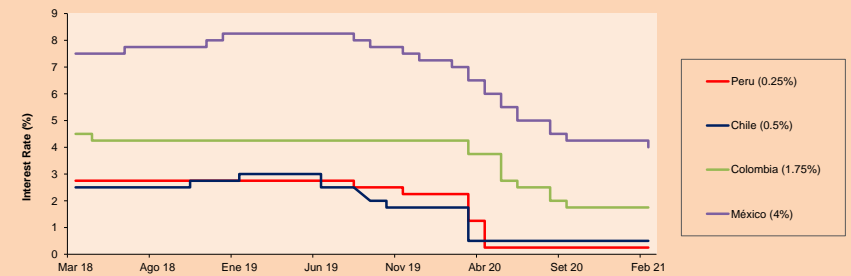


Base: 28/08/20=100
Source: Bloomberg

ETFs

ETFs	Curr.	Close	1D	5D	30 D	YTD	Exchange
▼ iShares MSCI All Peru Caped Index Fund	USD	38.89	-0.21%	2.29%	11.11%	12.14%	NYSE Arca
▲ iShares MSCI All Chile Caped Index Fund	USD	33.33	2.15%	1.86%	6.32%	10.33%	Cboe BZX
▲ Global X MSCI Colombia	USD	10.53	1.59%	0.26%	-0.38%	-7.31%	NYSE Arca
▲ iShares MSCI Mexico Capped	USD	42.24	0.79%	-1.29%	-2.06%	-1.74%	NYSE Arca
▼ iShares MSCI Emerging Markets	USD	55.73	-0.64%	-3.85%	-0.92%	7.86%	NYSE Arca
▼ Vanguard FTSE Emerging Markets	USD	54.43	-0.64%	-3.65%	0.29%	8.62%	NYSE Arca
▼ iShares Core MSCI Emerging Markets	USD	67.01	-0.61%	-3.51%	-0.49%	8.01%	NYSE Arca
▼ iShares JP Morgan Emerging Markets Bonds	USD	63.64	-0.55%	-2.36%	-0.22%	4.19%	Cboe BZX
- Morgan Stanley Emerging Markets Domestic	USD	6.11	0.00%	-1.29%	-0.33%	-2.86%	New York

MILA: Policy Rate



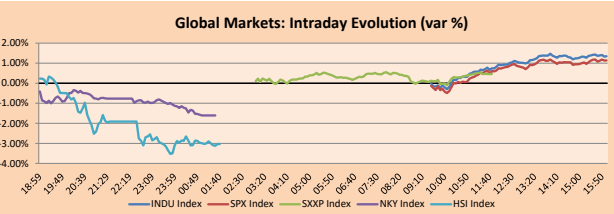
Source: Bloomberg

Capital Market Laboratory Coordinator: Economist Bruno Bellido
Collaboration: Piero Best, María Camarena, Alonso Stephen Hernández and Adrian Paredes
email: pulsobursatil@ulima.edu.pe
facebook: www.facebook.com/pulsobursatil

WORLD

Main Indices	Close	1 D*	5 D*	1 M*	YTD*	Market Cap. (US\$ Mill.)
▲ Dow Jones (USA)	31,961.86	1.35%	1.10%	2.66%	3.85%	9,731,756
▲ Standard & Poor's 500 (EEUU)	3,925.43	1.14%	-0.15%	1.39%	4.07%	34,651,950
▲ NASDAQ Composite (USA)	13,597.97	0.99%	-2.63%	-1.55%	4.16%	22,155,009
▲ Stoxx EUROPE 600 (Europe)	413.21	0.46%	-0.69%	2.11%	3.67%	9,329,340
▲ DAX (Germany)	13,976.00	0.80%	0.48%	2.25%	1.69%	1,040,867
▲ FTSE 100 (United Kingdom)	6,658.97	0.50%	-0.77%	0.85%	3.43%	1,363,278
▲ CAC 40 (France)	5,797.98	0.31%	0.56%	6.37%	4.86%	1,553,716
▲ IBEX 35 (Spain)	8,269.60	0.21%	1.81%	6.02%	3.71%	446,681
▲ MSCI AC Asia Pacific Index	212.31	-2.01%	-3.78%	-1.36%	6.20%	26,655,298
▼ HANG SENG (Hong Kong)	29,718.24	-2.99%	-4.40%	-0.28%	10.44%	4,565,765
▼ SHANGHAI SE Comp. (China)	3,564.06	-1.99%	-2.49%	-1.08%	3.22%	6,828,176
▼ NIKKEI 225 (Japan)	29,671.70	-1.81%	-2.61%	4.67%	9.93%	4,088,248
▼ S&P / ASX 200 (Australia)	6,777.82	-0.90%	-1.56%	0.14%	3.75%	1,724,454
▼ KOSPI (South Korea)	2,994.98	-0.26%	0.20%	-3.41%	7.87%	1,854,397

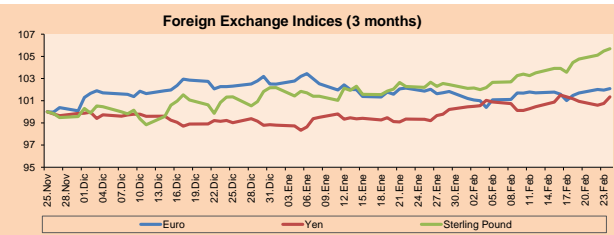
*Legend: Variation 1D: 1 Day; 5D: 5 Days; 1M: 1 Month; YTD: Var.% 12/31/20 to date



Source: Bloomberg

Currency	Price	1 D*	5 D*	1 M*	YTD*
▲ Euro	1.2166	0.13%	1.06%	0.22%	-0.41%
▲ Yen	105.8700	0.59%	0.00%	2.04%	2.54%
▲ Sterling Pound	1.4141	0.20%	2.05%	3.41%	3.45%
▼ Yuan	6.4571	-0.15%	-0.02%	-0.35%	-1.07%
▼ Hong Kong Dollar	7.7550	0.02%	0.03%	0.04%	0.02%
▼ Brazilian Real	5.4159	-0.47%	0.08%	-1.47%	4.18%
▲ Argentine Peso	89.6676	0.15%	0.81%	3.17%	6.50%

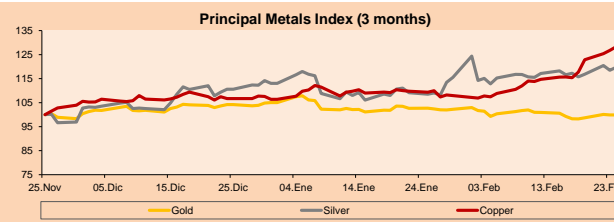
*Legend: Variation 1D: 1 Day; 5D: 5 Days; 1M: 1 Month; YTD: Var.% 12/31/20 to date



Base: 25/11/20=100
Source: Bloomberg

Commodities	Close	1 D*	5 D*	1 M*	YTD*
▼ Oro (US\$ Oz. T) (LME)	1,805.06	-0.04%	1.63%	-2.74%	-4.97%
▲ Plata (US\$ Oz. T) (LME)	27.95	1.01%	2.08%	10.28%	5.87%
▲ Cobre (US\$ TM) (LME)	9,340.00	1.18%	11.15%	17.28%	20.53%
▲ Zinc (US\$ TM) (LME)	2,833.50	-0.24%	1.39%	5.61%	3.82%
▲ Petróleo WTI (US\$ Barril) (NYM)	63.22	-2.51%	3.37%	20.03%	29.84%
▲ Estano (US\$ TM) (LME)	28,940.00	2.37%	4.27%	26.57%	40.86%
▲ Plomo (US\$ TM) (LME)	2,105.75	0.23%	0.54%	3.85%	6.58%
▲ Acaúcar #11 (US\$ Libra) (NYB-ICE)	17.17	0.94%	6.58%	14.31%	16.96%
▲ Cacao (US\$ TM) (NYB-ICE)	2,553.00	2.16%	7.54%	3.57%	0.71%
▼ Café Arábica (US\$ TM) (NYB-ICE)	137.25	-0.76%	7.73%	9.45%	5.46%

*Legend: Variación 1D: 1 Día; 5D: 5 Días; 1M: 1 Mes; YTD: Var.% 31/12/20 a la fecha



Base: 25/11/20=100
Source: Bloomberg

Equity

Germany (Stocks from DAX Index)

Largest gains	Curr.	Price	▲%	Exchange	Largest losses	Curr.	Price	▼%	Exchange
HEI GY	EUR	67.6	3.40	Xetra	DVNI GY	EUR	39.29	-1.26	Xetra
BAYN GY	EUR	55.11	3.32	Xetra	VNA GY	EUR	52.86	-1.16	Xetra
DBK GY	EUR	10.186	2.58	Xetra	DB1 GY	EUR	134.75	-1.10	Xetra
CON GY	EUR	120.5	1.73	Xetra	EOAN GY	EUR	8.558	-1.06	Xetra

Europe (Stocks from STOXX EUROPE 600)

Largest gains	Curr.	Price	▲%	Exchange	Largest losses	Curr.	Price	▼%	Exchange
CCL LN	GBP	1645.5	10.47	Londres	WKL NA	EUR	63.88	-6.25	EN Amsterdam
TTI IM	EUR	0.4148	9.16	Borsa Italiana	ENTRA NO	NOK	180.3	-6.00	Oslo
DUFN SE	CHF	59.42	7.49	SIX Swiss Ex	REE SQ	EUR	13.85	-5.58	Soc.BoI SIBE
SFZN SE	CHF	714	7.45	SIX Swiss Ex	GMAB DC	DKK	2150	-5.70	Copenhaen

Global Overview:

United States:

Major U.S. indices closed higher in today's session after Fed Chairman Jerome Powell's announcement that interest rates would remain low until 2023 calmed investors on inflation expectations. The S&P 500 finished the session higher driven by travel-related stocks amid an announcement of a 57% decrease in daily case loads, according to CNBC. Similarly, the Dow Jones industrials ended the day with positive returns reaching a new all-time high due to rising cyclical stock prices. On the other hand, the technology index remained positive despite a massive sell-off in tech stocks. In individual stocks GameStop closed higher +103.94% to end the day above 500 following reports that its CFO Jim Bell will resign amid pressure from board member Ryan Cohen, according to Reuters. Elsewhere, Microsoft Corp +0.55%, Amazon.com Inc -1.09% and Apple Inc -0.41%. Thus, Dow Jones +1.35%, S&P 500 +1.14%, Nasdaq +0.99% ended the session higher.

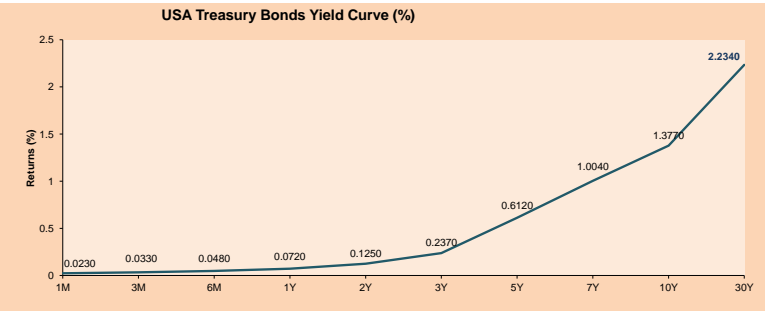
Europe:

European markets ended the session with positive returns, influenced by encouraging economic data from Germany and as investors continue to assess inflation risks and high valuations. In economic data, Germany reported that higher exports and stable construction activity contributed to the country's economic expansion by 0.3% in the last quarter of last year. The data exceeded the expectations of economists and gave greater support to the sectors that benefited from the recovery after the pandemic. In addition, there was a 1.9% increase in European travel stocks, reaching almost a year high, thanks to optimism about less restriction measures in the main countries, according to Reuters. Regarding the high valuations, which have recently pushed markets down, Chris Bauchamp from IG Group commented that "... investors are increasingly coming to terms with the fact that as European economies slowly reopen and earnings improve, current stock valuations may be justified". Thus, the STOXX 600 +0.46%, DAX +0.8%, CAC 40 +0.31%, FTSE 100 +0.5% and FTSE MIB +0.69% rose, among other indices.

Asia:

The main Asian markets ended the day's session with negative results, driven by the tightening of policies in the face of the recovery of the eastern economies, which produced sales in the shares of the overvalued sectors. The People's Bank of China (PBOC) is poised to keep its benchmark interest rate unchanged in the coming months, while directing a steady slowdown in credit expansion in 2021, with the CSI 300 falling -2.6%. In Hong Kong's case, pandemic relief measures, which include cash handouts to residents and tax breaks and other benefits for businesses, left the city with a much deeper deficit last year than HK \$ 139.1k million initially planned, for which reason the increase of the stamp tax on the trading of shares was proposed, from 0.10% to 0.13%. On the other hand, the Nasdaq listed stocks promoted the rotation of stocks towards those that were severely affected by the pandemic by launching new vaccines to boost the sectors with the greatest contagion. Lastly, the Shanghai Composite -1.55%, Shenzhen Composite -2.03%, Nikkei -1.61%, Hang Seng -1.92%, S & P / ASX 200 -0.89% and KOSPI -2.45% closed the day with a big drop.

ETFs	Curr.	Close	1D	5D	30 D	YTD	Exchange
SPDR S&P 500 ETF TRUST	USD	391.77	1.10%	-0.16%	1.92%	4.78%	NYSE Arca
ISHARES MSCI EMERGING MARKET	USD	55.73	-0.64%	-3.85%	-0.92%	7.86%	NYSE Arca
ISHARES IBOXX HIGH YLD CORP	USD	87.53	0.10%	-0.09%	0.24%	0.26%	NYSE Arca
FINANCIAL SELECT SECTOR SPDR	USD	33.55	1.94%	4.13%	11.39%	13.81%	NYSE Arca
VANECK GOLD MINERS	USD	33.70	0.78%	1.44%	-4.23%	-6.44%	NYSE Arca
ISHARES RUSSELL 2000 ETF	USD	227.00	2.36%	1.31%	5.68%	15.78%	NYSE Arca
SPDR GOLD SHARES	USD	169.00	-0.07%	1.61%	-2.90%	-5.25%	NYSE Arca
ISHARES 20+ YEAR TREASURY BO	USD	140.84	-0.66%	-3.40%	-8.35%	-10.71%	NASDAQ GM
INVESCO QQQ TRUST SERIES 1	USD	324.13	0.82%	-2.93%	-1.21%	3.31%	NASDAQ GM
ISHARES NASDAQ BIOTECHNOLOGY	USD	161.42	0.97%	-3.65%	-3.77%	6.55%	NASDAQ GM
ENERGY SELECT SECTOR SPDR	USD	50.29	3.54%	8.22%	20.77%	32.69%	NYSE Arca
PROSHARES ULTRA VIX ST FLUTUR	USD	8.28	-5.80%	-10.39%	-23.68%	-22.25%	Cboe BZX
UNITED STATES OIL FUND LP	USD	42.50	2.11%	3.94%	19.42%	28.75%	NYSE Arca
ISHARES MSCI BRAZIL ETF	USD	34.73	1.02%	-3.82%	0.61%	-6.31%	NYSE Arca
SPDR S&P OIL & GAS EXP & PR	USD	84.86	3.93%	7.35%	25.09%	45.06%	NYSE Arca
UTILITIES SELECT SECTOR SPDR	USD	60.00	-1.17%	-3.18%	-6.40%	-4.31%	NYSE Arca
ISHARES US REAL ESTATE ETF	USD	90.22	0.53%	1.90%	4.17%	5.34%	NYSE Arca
SPDR S&P BIOTECH ETF	USD	153.10	1.51%	-4.74%	-2.57%	8.75%	NYSE Arca
ISHARES IBOXX INVESTMENT GRA	USD	132.64	0.18%	-1.31%	-2.67%	-3.97%	NYSE Arca
ISHARES JPMORGAN USD EMERGI	USD	111.53	0.15%	-1.05%	-2.42%	-3.78%	NASDAQ GM
REAL ESTATE SELECT SECT SPDR	USD	38.63	0.47%	1.68%	3.98%	5.66%	NYSE Arca
ISHARES CHINA LARGE-CAP ETF	USD	50.69	-2.16%	-6.94%	-4.18%	9.18%	NYSE Arca
CONSUMER STAPLES SPDR	USD	65.05	-0.06%	-1.15%	-1.02%	-3.58%	NYSE Arca
VANECK JR GOLD MINERS	USD	50.13	1.60%	4.05%	0.42%	-7.58%	NYSE Arca
SPDR BBG BARC HIGH YIELD BND	USD	109.32	0.02%	-0.06%	0.35%	0.35%	NYSE Arca
VANGUARD REAL ESTATE ETF	USD	90.91	0.76%	2.39%	5.20%	7.04%	NYSE Arca
GRAYSCALE BITCOIN TRUST BTC	USD	48.40	5.58%	-10.49%	46.44%	51.25%	OTC US



Source: Bloomberg

LIMA

Stocks

Ticker	Currency	Price	1D*	5D*	30D*	YTD*	Frequency	Volume (US\$)	Beta	Dividend Yield (%)	Price Earning	Market Cap. (M US\$)	Economic Sector*	Index Weight
- ALICORC1 PE**	S/.	8.15	0.00%	-0.61%	-0.39%	0.90%	100.00%	3,194,634	0.68	3.07	21.28	1,906.37	Industrial	3.53%
- ATACOB1 PE**	S/.	0.17	0.00%	2.41%	13.33%	23.19%	90.00%	9,749	1.09	0.00	-	44.06	Mining	1.02%
▲ BACKUS1 PE**	S/.	23.20	0.87%	-3.33%	3.11%	15.14%	85.00%	83,248	0.54	1.51	10.86	8,720.10	Industrial	0.82%
▲ BAP PE**	US\$	164.50	0.55%	-2.08%	6.82%	2.43%	100.00%	1,392,136	1.65	5.35	-	15,525.89	Diverse	5.82%
▲ BVN PE**	US\$	11.63	1.57%	14.02%	12.91%	-3.08%	95.00%	730,973	1.26	0.00	-	3,205.63	Mining	5.88%
▲ CASAGRC1 PE**	S/.	6.22	1.14%	2.98%	7.24%	30.95%	90.00%	20,382	0.61	3.63	11.17	143.72	Agricultural	1.31%
▲ BBVAC1 PE**	S/.	2.46	0.41%	-1.99%	7.42%	13.36%	95.00%	228,649	0.68	3.51	25.75	4,405.91	Finance	2.85%
▼ CORARE1 PE**	S/.	1.11	-2.63%	-3.48%	18.09%	24.72%	100.00%	109,408	0.59	6.29	6.62	415.14	Industrial	1.72%
▼ CPACASC1 PE**	S/.	6.12	-0.49%	0.33%	2.86%	15.47%	100.00%	50,631	0.58	3.76	43.71	779.20	Industrial	2.38%
▼ CVERDEC1 PE**	US\$	28.20	2.55%	14.63%	29.36%	34.80%	100.00%	345,304	0.84	0.00	45.51	9,871.58	Mining	5.25%
- ENGEPEC1 PE**	S/.	2.47	-0.40%	2.92%	13.82%	23.50%	80.00%	51,019	0.49	8.90	15.10	1,923.39	Public Services	1.44%
▼ ENDISPC1**	S/.	6.00	0.00%	-0.50%	8.70%	11.11%	90.00%	10,507	0.48	0.00	14.07	1,050.99	Public Services	0.98%
▲ FERREYC1 PE**	S/.	2.10	0.96%	1.45%	0.96%	20.69%	100.00%	744,008	0.61	3.65	13.83	562.04	Diverse	4.90%
- AENZAC1 PE**	S/.	1.72	0.00%	0.00%	-3.37%	-1.15%	100.00%	13,038	0.81	0.00	-	411.38	Diverse	4.05%
▼ IFS PE**	US\$	34.07	-2.24%	-1.25%	3.24%	10.12%	100.00%	188,195	1.33	5.14	37.44	3,933.30	Diverse	7.22%
- INRETC1 PE**	US\$	45.00	0.00%	4.65%	2.51%	14.80%	100.00%	583,470	0.60	1.25	36.80	4,626.33	Diverse	5.28%
- LUSURC1 PE**	S/.	23.20	0.00%	-15.64%	-17.14%	-9.02%	100.00%	14,077	0.52	3.01	22.77	3,098.96	Public Services	1.81%
- MINSUR1 PE**	S/.	3.15	0.00%	10.92%	40.00%	70.27%	95.00%	114,556	0.79	0.00	-	2,491.14	Mining	3.09%
▲ PML PE**	US\$	0.16	0.63%	6.67%	39.13%	50.94%	80.00%	19,735	1.49	0.00	-	42.27	Mining	2.12%
▲ RELAPAC1 PE**	S/.	0.14	4.65%	50.00%	87.50%	95.65%	100.00%	182,801	0.34	0.00	-	308.08	Industrial	2.12%
▲ SCCO PE**	US\$	78.10	-1.14%	5.54%	13.02%	18.51%	90.00%	171,937	0.78	2.18	36.31	60,377.02	Mining	2.14%
▲ SIDERC1 PE**	S/.	1.05	0.96%	1.94%	16.67%	23.53%	95.00%	12,055	0.84	32.59	12.48	353.67	Industrial	1.43%
▲ TV PE**	US\$	0.19	3.93%	5.11%	10.12%	25.85%	100.00%	18,426	1.50	0.00	-	182.98	Mining	2.93%
▼ UNACEMC1 PE**	S/.	1.84	-1.08%	-3.16%	3.37%	18.71%	100.00%	371,612	0.80	0.71	50.87	917.67	Industrial	3.00%
▲ VOLCABC1 PE**	S/.	0.79	1.28%	2.60%	38.60%	51.92%	100.00%	366,477	0.88	0.00	-	883.42	Mining	5.90%
- NEXAPEC1 PE**	S/.	4.05	0.00%	3.85%	31.07%	43.11%	95.00%	24,372	1.07	0.00	-	1,468.70	Mining	1.56%

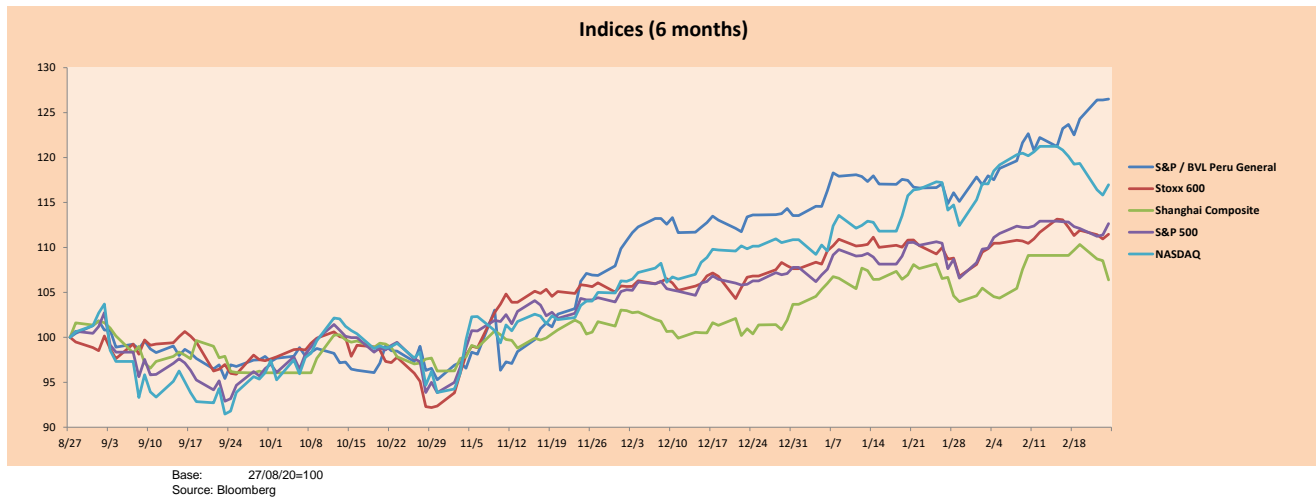
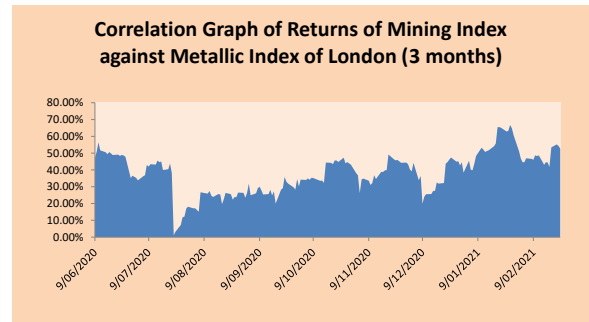
Quantity of shares: 26
 Source: Bloomberg, Economática
 * Bloomberg Industry Classification System
 ** PER is used in the stock market and original currency of the instrument
 *Legend: Variation 1D: 1 Day; 5D: 5 Days; 1M: 1 Month; YTD: Var.% 12/31/20 to date

Sectorial Indices

	Close	1D*	5D*	30D*	YTD*	Beta
▼ S&P/BVLMining	459.95	-0.26%	7.74%	16.76%	17.95%	0.84
▲ S&P/BVLConsumer	1,253.76	0.06%	1.29%	1.48%	15.17%	0.37
▲ S&P/BVLIndustrials	219.60	-0.07%	0.06%	2.78%	15.24%	0.52
▲ S&P/BVLFinancials	1,077.60	0.07%	-2.11%	6.47%	4.23%	1.79
▲ S&P/BVLConstruction	234.75	-0.58%	-1.11%	-2.70%	12.26%	0.54
▼ S&P/BVLPublicSvcs	637.17	-0.08%	-5.26%	-2.79%	3.76%	0.15
▼ S&P/BVLElectricUtil	622.03	-0.09%	-5.26%	-2.79%	3.75%	0.15

S&P/BVLConstructionTRPEN

*Legend: Variation 1D: 1 Day; 5D: 5 Days; 1M: 1 Month; YTD: Var.% 12/31/20 to date



Base: 27/08/20=100
 Source: Bloomberg

Capital Market Laboratory Coordinator: Economist Bruno Bellido
 Collaboration: Piero Best, Maria Camarena, Alonso Stephen Hernández and Adrian Paredes
 email: pulsohorsatil@ulima.edu.pe
 facebook: www.facebook.com/pulsohorsatil.ul

The content of this document is just for informational purposes. The information and opinions expressed should not be considered as recommendations for future decisions. Under any circumstances, the Capital Market Laboratory of University of Lima will be responsible for the use of the statements in this document.

SOVEREIGN RATING

RISK RATINGS

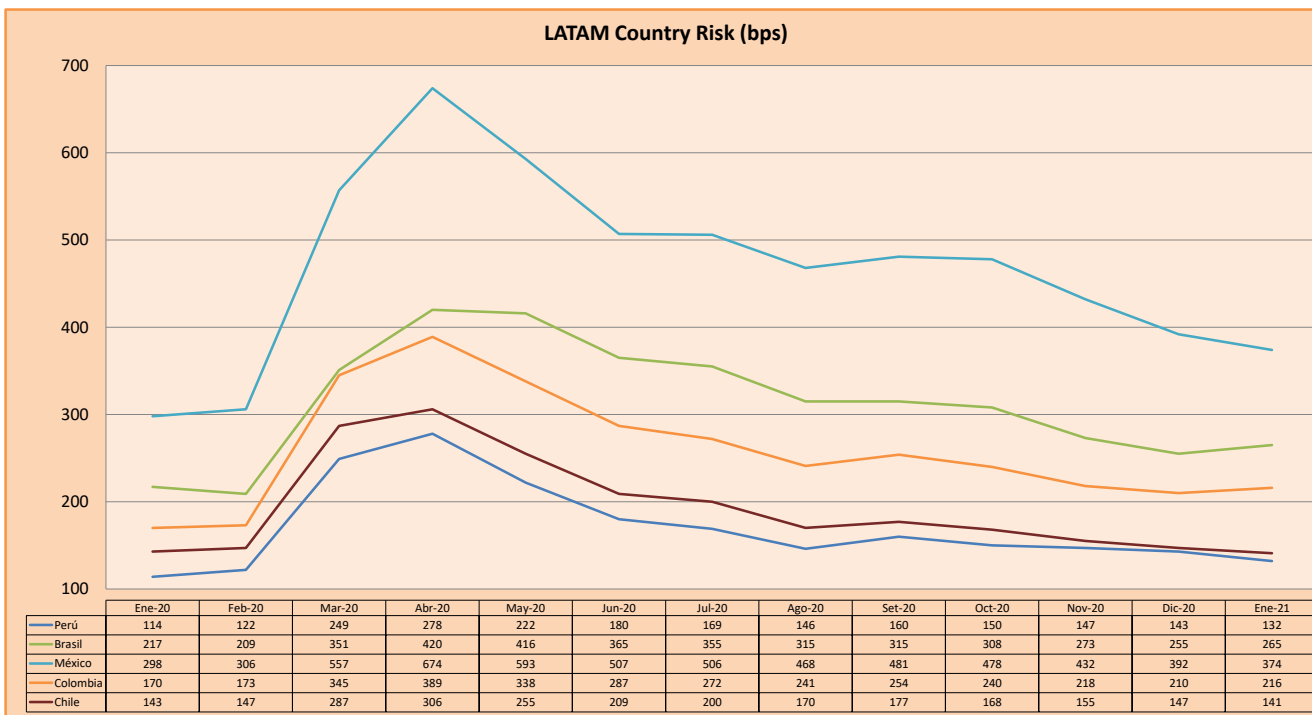
Moody's	S&P	Fitch	
Aaa	AAA	AAA	Prime
Aa1	AA+	AA+	High credit quality
Aa2	AA	AA	
Aa3	AA-	AA-	
A1	A+	A+	Medium-high grade, with low credit risk
A2	A	A	
A3	A-	A-	
Baa1	BBB+	BBB+	Moderate Credit Risk
Baa2	BBB	BBB	
Baa3	BBB-	BBB-	
Ba1	BB+	BB+	It has speculative elements and it is subject to substantial credit risk
Ba2	BB	BB	
Ba3	BB-	BB-	
B1	B+	B+	It is considered speculative and it has high credit risk
B2	B	B	
B3	B-	B-	
Caa1	CCC+		Bad credit conditions and it is subject to high credit risk
Caa2	CCC		
Caa3	CCC-	CCC	
Ca	C		Very close to default or in default
		DDD	
C	D	DD D	

Source: Bloomberg

Latin America Credit Rating			
Clasificadora de riesgo			
Country	Moody's	Fitch	S&P
Peru	A3	BBB+	BBB+
México	Ba2	BB-	BB-
Venezuela	C	WD	SD
Brazil	Ba2	BB-	BB-
Colombia	Baa2	BBB-	BBB-
Chile	A1	A-	A+
Argentina	Ca	WD	CCC+
Panama	Baa1	BBB-	BBB

Source: Bloomberg

LATAM Country Risk (bps)



Source: BCRP

Capital Market Laboratory Coordinator: Economist Bruno Bellido
Collaboration: Piero Best, Maria Camarena, Alonso Stephen Hernández and Adrian Paredes
email: pulsobursatil@ulima.edu.pe
facebook: www.facebook.com/pulsobursatil.ul