

PULSO BURSÁTIL

FACULTAD DE CIENCIAS EMPRESARIALES Y ECONÓMICAS
CARRERA DE ECONOMÍA
LABORATORIO DE MERCADO DE CAPITALES

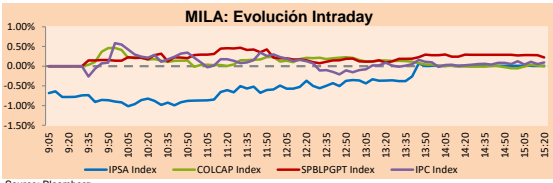


MILA

Lima, March 12, 2021

Main Indexes	Close	1 D	5 D	1 M	YTD	Cap. Burs. (US\$ bill)
▲ IPSA (Chile)	4,893.23	0.25%	3.81%	5.91%	17.14%	134.11
▲ IGPA (Chile)	24,623.13	0.17%	3.53%	5.61%	17.21%	165.48
▲ COLSC (Colombia)	1,053.28	0.91%	-0.15%	-2.06%	-0.54%	5.54
▲ COLCAP (Colombia)	1,353.68	0.25%	0.67%	-1.15%	-5.86%	82.06
▲ S&P/BVL (Perú)*	22,767.39	0.12%	0.96%	2.41%	9.34%	115.75
▲ S&P/BVL SEL (Perú)	607.16	0.35%	1.15%	1.94%	10.11%	94.20
▼ S&P/BVL LIMA 25	29,764.13	-0.17%	1.01%	2.11%	18.12%	114.76
▲ IPC (México)	47,769.87	0.20%	3.08%	8.18%	8.40%	292.51
▼ S&P MILA 40	566.20	-0.95%	3.90%	2.65%	5.91%	6,052.85

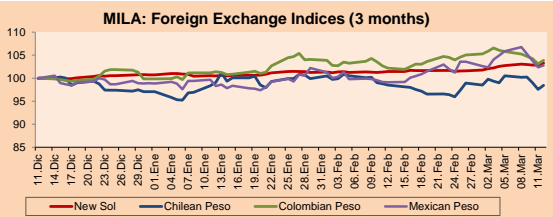
*Legend: Variation 1D: 1 day; 5D: 5 days; 1M: 1 Month; YTD: Var% 12/31/20 to date



Source: Bloomberg

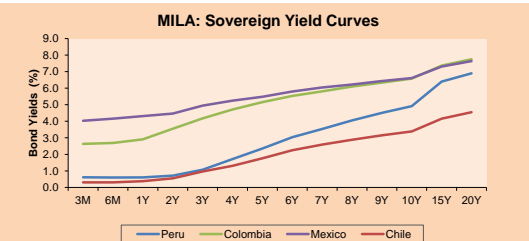
Currency	Price	1D*	5D*	30 D*	YTD*
▲ New Sol (PEN)	3.7099	0.45%	0.51%	1.99%	2.54%
▲ Chilean Peso (CLP)	721.74	0.87%	-2.07%	-0.61%	1.40%
▲ Colombian Peso (COP)	3,568.25	0.72%	-1.85%	0.29%	4.04%
▲ Mexican Peso (MXN)	20.69	0.43%	-2.91%	3.24%	3.91%

*Legend: Variation 1D: 1 day; 5D: 5 days; 1M: 1 Month; YTD: Var% 12/31/20 to date



Base: 11/12/20=100
Source: Bloomberg

Fixed Income	Currency	Price	Bid Yield (%)	Ask Yield (%)	Duration
PERU 7.35 07/21/25	USD	124.076	1.66	1.53	3.82
PERU 4.125 08/25/27	USD	112.183	2.12	2.06	5.78
PERU 8.75 11/21/33	USD	154.423	3.46	3.39	8.73
PERU 6.55 03/14/37	USD	135.271	3.67	3.58	10.59
PERU 5.625 11/18/2050	USD	131.137	3.88	3.83	16.34
CHILE 2.25 10/30/22	USD	102.672	0.72	0.47	1.59
CHILE 3.125 01/21/26	USD	108.019	1.45	1.36	4.54
CHILE 3.625 10/30/42	USD	103.593	3.41	3.37	15.35
COLOM 11.85 03/09/28	USD	158.753	2.71	2.48	5.37
COLOM 10.375 01/28/33	USD	156.267	4.40	4.16	7.97
COLOM 7.375 09/18/37	USD	132.265	4.61	4.53	10.39
COLOM 6.125 01/18/41	USD	119.04	4.68	4.61	12.36
MEX 4 10/02/23	USD	119.04	4.683	4.607	12.36
MEX5.55 01/45	USD	116.099	4.47	4.42	14.13



Source: Bloomberg

Equity

Largest gains	Exchange	Currency	Price	▲ %
ITAU CORPBANCA	Chile	CLP	2.87	5.32
ENGIE ENERGIA CH	Chile	CLP	846.00	3.82
BANCO CRED INVER	Chile	CLP	35900.00	3.76
AERO DEL SURESB	Mexico	MXN	364.68	2.80
CENCOSUD SA	Chile	CLP	1464.00	2.74

Per Turnover	Exchange	Amount (US\$)
GRUPO F BANORT-O	Mexico	42,613,721
GRUPO MEXICO-B	Mexico	41,731,021
WALMART DE MEXIC	Mexico	41,645,012
GRUPO AEROPORTUA	Mexico	37,954,424
AMERICA MOVIL-L	Mexico	29,568,861

Largest losses	Exchange	Currency	Price	▼ %
VOLCAN CIA MIN-B	Peru	PEN	0.85	-2.30
KIMBERLY-CLA M-A	Mexico	MXN	34.36	-2.05
CMPC	Chile	CLP	2304.9	-1.92
GRUPO AEROPORTU	Mexico	MXN	131.08	-1.88
SOUTHERN COPPER	Peru	USD	77.57	-1.81

Per Volume	Exchange	Volume
ITAU CORPBANCA	Chile	633,850,999
BANCO SANTANDER	Chile	120,463,880
ENEL AMERICAS SA	Chile	109,655,922
ENEL CHILE SA	Chile	75,547,749
AMERICA MOVIL-L	Mexico	43,251,466

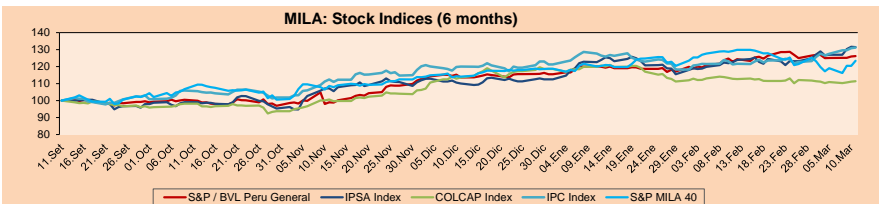
MILA

Peru: The General Index of the BVL ended today's session with a positive result of + 0.12%. The index maintains a positive accumulated annual trend of + 9.34% in local currency, while the adjusted return in dollars amounts to + 6.63%. Then, the S&P / BVL Peru SEL varied by + 0.35% while the S&P / BVL LIMA 25 by -0.17%. The PEN spot reached S / 3.7099. Headline: Peru suspends mandatory quarantine for foreign travelers and PCR requirement on domestic flights

Chile: The IPSA index ended the day with a positive return of + 0.25%. The sectors with the highest growth in the session were Information Technology (+ 1.75%) and Finance (+ 1.46%). The stocks with the best performance were Inversiones La Construcción (+ 5.34%) and Itau Corbanca (+ 5.32%). Headline: Chile posts a trade surplus of US \$ 1,516M in February

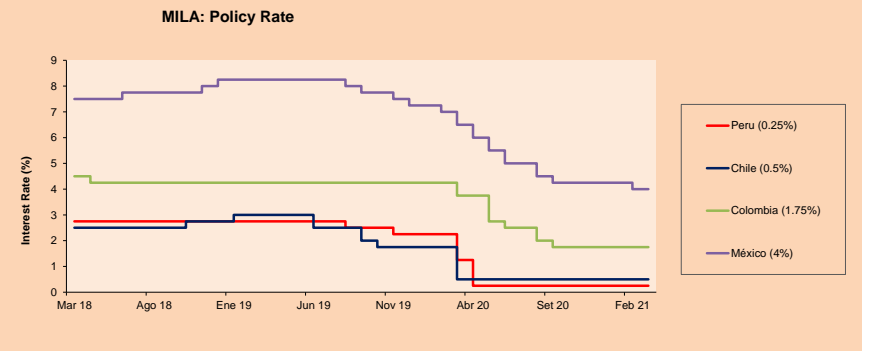
Colombia: The COLCAP index closed today with a positive return of + 0.25%. The sectors with the highest increase in the day were Non-Basic Consumer Products (+ 3.85%) and Public Services (+ 0.43%). The stocks with the best returns were Organización Terpel SA (+ 3.85%) and Almacenes Exito SA (+ 1.69%). Headline: Colombia's Tax Commission to Recommend Cuts in Tax Exemptions

Mexico: The IPC index closed the day with a positive return of + 0.20%. The sectors that led the day were Industrial (+ 0.97%) and Communication Services (+ 0.93%). The shares with the highest earnings were Grupo Aeropuerto del Sureste-B (+ 2.80%) and Grupo Aeropuerto del Pacifico -B (+ 2.02%). Headline: Mexico will evaluate this year if there are conditions for a tax reform



Base: 14/09/20=100
Source: Bloomberg

ETFs	Curr.	Close	1D	5D	30 D	YTD	Exchange
▲ iShares MSCI All Peru Caped Index Fund	USD	36.87	0.05%	2.39%	-2.23%	6.31%	NYSE Arca
▼ iShares MSCI All Chile Caped Index Fund	USD	34.06	-1.25%	5.32%	6.44%	12.74%	Cboe BZX
▼ Global X MSCI Colombia	USD	10.61	-0.42%	2.57%	0.86%	-6.60%	NYSE Arca
▼ iShares MSCI Mexico Capped	USD	43.83	-0.45%	5.36%	2.65%	1.95%	NYSE Arca
▼ iShares MSCI Emerging Markets	USD	53.99	-1.78%	0.30%	-5.51%	4.49%	NYSE Arca
▼ Vanguard FTSE Emerging Markets	USD	52.87	-1.77%	0.51%	-4.76%	5.51%	NYSE Arca
▼ iShares Core MSCI Emergina Markets	USD	65.07	-1.72%	0.35%	-4.98%	4.88%	NYSE Arca
▼ iShares JP Morgan Emergina Markets Bonds	USD	62.895	-0.86%	0.46%	-2.59%	2.97%	Cboe BZX
▼ Morgan Stanley Emerging Markets Domestic	USD	5.93	-1.00%	-0.67%	-4.51%	-5.72%	New York



Source: Bloomberg

Capital Market Laboratory Coordinator: Economist Bruno Bellido
Collaboration: Piero Best, Maria Camarena, Alonso Stephen Hernández and Adrian Paredes
email: pulso_bursatil@ulima.edu.pe
facebook: www.facebook.com/pulso_bursatil

The content of this document is just for informational purposes. The information and opinions expressed should not be considered as recommendations for future decisions. Under any circumstances, the Capital Market Laboratory of University of Lima will be responsible for the use of the statements in this document.

PULSO BURSÁTIL

FACULTAD DE CIENCIAS EMPRESARIALES Y ECONÓMICAS
CARRERA DE ECONOMÍA
LABORATORIO DE MERCADO DE CAPITALES



WORLD

Main Indices	Close	1 D*	5 D*	1 M*	YTD*	Market Cap. (US\$ Mill.)
▲ Dow Jones (USA)	32,778.64	0.90%	4.07%	4.20%	7.10%	9,773,957
▲ Standard & Poor's 500 (EEUU)	3,943.34	0.10%	2.64%	0.22%	4.99%	34,799,323
▼ NASDAQ Composite (USA)	13,319.86	-0.59%	3.09%	-5.50%	3.35%	21,720,507
▼ Stoxx EUROPE 600 (Europe)	423.08	-0.26%	3.52%	0.86%	6.03%	9,733,291
▲ DAX (Germany)	14,502.39	-0.46%	4.18%	2.78%	5.71%	1,103,390
▲ FTSE 100 (United Kingdom)	6,761.47	0.36%	1.97%	0.08%	4.66%	1,403,111
▲ CAC 40 (France)	6,046.55	0.21%	4.56%	4.50%	8.92%	1,650,031
▲ IBEX 35 (Spain)	8,644.50	0.60%	4.32%	5.38%	7.07%	477,053
▲ MSCI AC Asia Pacific Index	207.79	-0.10%	0.86%	-5.32%	3.94%	26,302,010
▲ HANG SENG (Hong Kong)	28,739.72	-2.20%	-1.23%	-4.75%	5.54%	4,299,158
▲ SHANGHAI SE Comp. (China)	3,453.08	0.47%	-1.40%	-5.53%	-0.58%	6,538,170
▲ NIKKEI 225 (Japan)	29,717.83	1.73%	2.96%	-1.22%	8.28%	4,042,879
▲ S&P / ASX 200 (Australia)	6,766.81	0.79%	0.83%	-1.49%	2.73%	1,662,785
▲ KOSPI (South Korea)	3,054.39	0.20%	3.08%	-2.94%	6.30%	1,785,940

*Legend: Variation 1D: 1 Day; 5D: 5 Days; 1M: 1 Month; YTD: Var. % 12/31/20 to date

Equity

Germany (Stocks from DAX Index)

Largest gains	Curr.	Price	▲ %	Exchange	Largest losses	Curr.	Price	▼ %	Exchange
DBK GY	EUR	10,666	1.41	Xetra	SAP GY	EUR	103.04	-2.66	Xetra
HEI GY	EUR	73.88	1.32	Xetra	DAI GY	EUR	70.72	-1.90	Xetra
DPW GY	EUR	45.06	1.14	Xetra	1COV GY	EUR	59.14	-1.76	Xetra
BEI GY	EUR	87.08	1.09	Xetra	BMW GY	EUR	77.48	-1.32	Xetra

Europe (Stocks from STOXX EUROPE 600)

Largest gains	Curr.	Price	▲ %	Exchange	Largest losses	Curr.	Price	▼ %	Exchange
KBC BB	EUR	60.7	5.20	EN Brussels	BKG LN	Gbp	4306	-5.82	Londres
SPIE FP	EUR	20.48	4.38	EN Paris	THG LN	Gbp	645	-4.30	Londres
CNA LN	Gbp	53.9	4.34	Londres	ADE NO	NOK	130	-4.06	Oslo
BARC LN	Gbp	180.6	3.64	Londres	AMBUB DC	DKK	274.1	-3.96	Copenhagen

Global Overview:

United States:

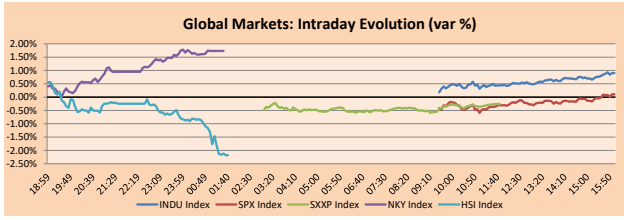
US markets closed trading with mixed returns, as market participants turned back to the stocks that would benefit from the economic recovery, reinforced by rising returns in the bond market. The DJIA index continued its record closes, while the S&P 500 finished slightly higher, both marking some of their best weekly gains. For its part, the NASDAQ was again under pressure following the increase in bond rates, with the benchmark 10-year bond reaching 1.642%. Thomas Hayes from Great Hill Capital LLC commented that, "for tech stocks to continue to thrive, you need low rates and, indeed, slower growth". He also added that with Biden's bill, it is possible that the economy will grow between 7% and 9% in 2021 and put pressure on interest rates. In economic data, consumer confidence showed an improvement earlier this month, reaching its strongest level in a year, according to the University of Michigan publication. Thus, the DJIA + 0.9% and S&P 500 + 0.1% rose; instead, the NASDAQ -0.59% fell.

Europe:

European markets ended the session with mixed performances. During the day, U.S. Treasury yields reached 1.6%, following the strong reception of the stimulus approval. At the same time, signals from the European Central Bank to control borrowing costs helped some investors to take some money off the table. The pan-European STOXX 600 index closed lower, snapping a four-session winning streak. However, the index posted weekly gains of 3.5%, its best performance since November. In the UK, the economy contracted -2.9% in January from the previous month, evidence of a less severe contraction than expected as the country re-entered the national lockdown. In Germany, the Frankfurt stock exchange closed with losses, showing a decline in the software, distribution and media sectors. In stock market shares, luxury sector stocks made gains such as Burberry +6.8% and Brunello Cucinelli +8.24%. On the other hand, technology and automotive stocks suffered losses: Prosus -6.67%, Daimler -1.90% and BMW -1.32%. By today's close, the main indexes Stoxx 600 -0.26%, FTSE 100 +0.36%, CAC 40 +0.21% and DAX -0.46% ended the day mixed.

Asia:

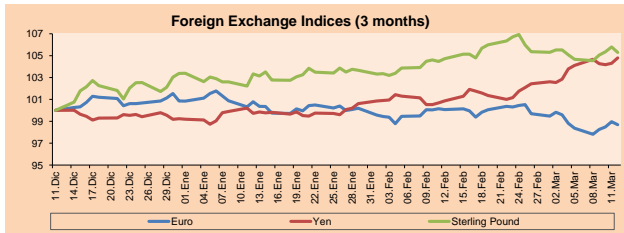
Major Asian markets ended the session mostly higher following yesterday's fiscal stimulus announcement and the resurgence of tensions between China and the United States. Thus, in Hong Kong, stocks fell dragged down by technology stocks after threats of fines and new restrictions on Alibaba weighed on confidence in this sector. On the other hand, the Japanese index benefited from the depreciation of the yen that encouraged export expectations; thus the Materials +3.18% and Technology +2.99% sectors led the session's gains. In South Korea, the main indices closed the day with positive performances, driven by semiconductor stocks Samsung Electronics +0.98% and SK Hinx +2.19%. Finally, in Australia, the S&P/ASX 200 index ended the day with gains after the technology sector +2.44% benefited from Wall Street gains yesterday and mining stocks rose following the recovery of iron prices. Thus, NIKKEI +1.42%, HANG SENG -2.20%, SHANGHAI COMP +0.17%, KOSPI +1.35% and S&P/ASX 200 +0.79% closed the day mostly higher.



Source: Bloomberg

Currency	Price	1 D*	5 D*	1 M*	YTD*
▼ Euro	1.1953	-0.28%	0.32%	-1.36%	-2.15%
▼ Yen	109.0300	0.48%	0.66%	4.25%	5.60%
▼ Sterling Pound	1.3924	-0.48%	0.60%	0.65%	1.86%
▲ Yuan	6.5085	0.23%	0.18%	0.78%	-0.29%
▲ Hong Kong Dollar	7.7629	0.04%	0.00%	0.14%	0.13%
▲ Brazilian Real	5.5560	0.29%	-2.24%	3.18%	6.88%
▲ Argentine Peso	90.8594	0.08%	0.53%	2.52%	7.98%

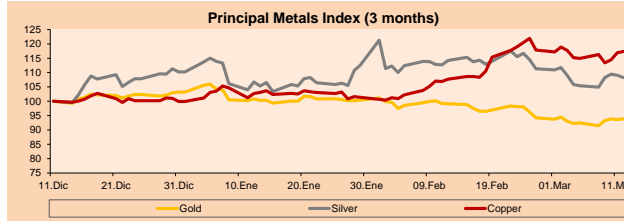
*Legend: Variation 1D: 1 Day; 5D: 5 Days; 1M: 1 Month; YTD: Var. % 12/31/20 to date



Base: 11/12/20=100
Source: Bloomberg

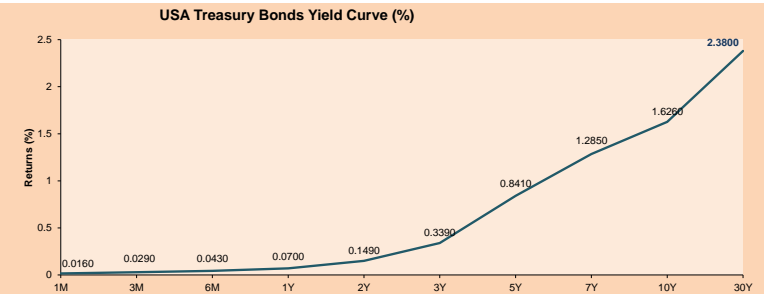
Commodities	Close	1 D*	5 D*	1 M*	YTD*
▲ Oro (US\$ Oz. T) (LME)	1,727.11	0.26%	1.56%	-6.28%	-9.02%
▼ Plata (US\$ Oz. T) (LME)	25.92	-0.78%	2.66%	-4.10%	-1.83%
▲ Cobre (US\$ TM) (LME)	9,103.50	0.38%	2.14%	9.64%	17.48%
▼ Zinc (US\$ TM) (LME)	2,782.25	-0.58%	1.03%	2.82%	1.94%
▼ Petróleo WTI (US\$ Barril) (NYM)	65.61	-0.62%	-0.73%	12.02%	34.75%
▼ Estarío (US\$ TM) (LME)	28,250.00	-6.88%	6.99%	13.85%	37.51%
▲ Plomo (US\$ TM) (LME)	1,936.25	1.15%	-2.38%	-7.02%	-2.00%
▼ Azúcar #11 (US\$ Libra) (NYB-ICE)	16.13	-1.41%	-1.65%	1.83%	9.88%
▲ Casaca (US\$ TM) (NYB-ICE)	2,570.00	-0.89%	0.94%	3.05%	1.38%
▲ Café Arábica (US\$ TM) (NYB-ICE)	133.00	0.49%	3.22%	8.00%	2.19%

*Leyenda: Variación 1D: 1 Día; 5D: 5 Días; 1M: 1 Mes; YTD: Var. % 31/12/20 a la fecha



Base: 11/12/20=100
Source: Bloomberg

ETFs	Curr.	Close	1D	5D	30 D	YTD	Exchange
SPDR S&P 500 ETF TRUST	USD	394.06	0.13%	2.72%	1.02%	5.40%	NYSE Arca
ISHARES MSCI EMERGING MARKET	USD	53.99	-1.78%	0.30%	-5.51%	4.49%	NYSE Arca
ISHARES IBOXX HIGH YLD CORP	USD	86.46	-0.28%	-0.18%	-1.30%	-0.96%	NYSE Arca
FINANCIAL SELECT SECTOR SPDR	USD	34.77	1.02%	3.14%	11.09%	17.94%	NYSE Arca
VANECK GOLD MINERS	USD	33.00	0.09%	4.09%	-6.24%	-8.16%	NYSE Arca
ISHARES RUSSELL 2000 ETF	USD	233.59	0.59%	7.29%	2.96%	19.14%	NYSE Arca
SPDR GOLD SHARES	USD	161.49	-0.02%	1.48%	-6.50%	-9.46%	NYSE Arca
ISHARES 20+ YEAR TREASURY BO	USD	136.06	-2.12%	-2.05%	-9.16%	-13.74%	NASDAQ GM
INVECO COO TRUST SERIES 1	USD	315.46	-0.81%	2.20%	-5.20%	0.55%	NASDAQ GM
ISHARES NASDAQ BIOTECHNOLOGY	USD	154.75	-0.72%	3.05%	-9.11%	2.15%	NASDAQ GM
ENERGY SELECT SECTOR SPDR	USD	53.57	0.21%	1.17%	19.82%	41.35%	NYSE Arca
PROSHARES ULTRA VIX ST FUTUR	USD	7.74	-2.03%	-11.24%	-24.49%	-27.32%	Cboe BZX
UNITED STATES OIL FUND LP	USD	44.35	-0.56%	-0.20%	12.91%	34.35%	NYSE Arca
ISHARES MSCI BRAZIL ETF	USD	33.29	-1.13%	0.91%	-6.75%	-10.20%	NYSE Arca
SPDR S&P OIL & GAS EXP & PR	USD	90.44	-0.74%	0.49%	20.75%	54.60%	NYSE Arca
UTILITIES SELECT SECTOR SPDR	USD	62.41	1.35%	4.57%	-1.62%	-0.46%	NYSE Arca
ISHARES US REAL ESTATE ETF	USD	90.87	1.67%	5.26%	1.60%	6.09%	NYSE Arca
SPDR S&P BIOTECH ETF	USD	146.51	-0.30%	5.58%	-12.80%	4.07%	NYSE Arca
ISHARES IBOXX INVESTMENT GRA	USD	128.71	-1.15%	-0.81%	-5.00%	-6.82%	NYSE Arca
ISHARES JP MORGAN USD EMERGI	USD	108.46	-1.26%	-0.13%	-4.89%	-6.43%	NASDAQ GM
REAL ESTATE SELECT SECT SPDR	USD	39.03	1.72%	5.94%	1.51%	6.76%	NYSE Arca
ISHARES CHINA LARGE-CAP ETF	USD	48.10	-2.81%	-1.54%	-8.75%	3.60%	NYSE Arca
CONSUMER STAPLES SPDR	USD	66.15	0.82%	2.24%	0.41%	-1.93%	NYSE Arca
VANECK JR GOLD MINERS	USD	47.10	-0.19%	3.27%	-7.68%	-13.16%	NYSE Arca
SPDR BBS BARC HIGH YIELD BND	USD	108.01	-0.23%	-0.18%	-1.26%	-0.85%	NYSE Arca
VANGUARD REAL ESTATE ETF	USD	91.62	1.68%	5.48%	2.51%	7.88%	NYSE Arca
GRAYSCALE BITCOIN TRUST BTC	USD	50.00	-4.40%	14.16%	11.23%	56.25%	OTC US



Source: Bloomberg

Capital Market Laboratory Coordinator: Economist Bruno Bellido
Collaboration: Piero Best, Maria Camarena, Alonso Stephen Hernández and Adrian Paredes
email: pulsobursatil@ulima.edu.pe
facebook: www.facebook.com/pulsobursatil

The content of this document is just for informational purposes. The information and opinions expressed should not be considered as recommendations for future decisions. Under any circumstances, the Capital Market Laboratory of University of Lima will be responsible for the use of the contents in this document.

LIMA

Stocks

Ticker	Currency	Price	1D*	5D*	30D*	YTD*	Frequency	Volume (US\$)	Beta	Dividend Yield (%)	Price Earning	Market Cap. (M US\$)	Economic Sector*	Index Weight
▲ ALICORC1 PE**	S/.	8.05	0.91%	-0.15%	-2.06%	-0.54%	100.00%	1,596,939	0.67	3.11	21.02	1,850.44	Industrial	3.53%
▲ ATACOCB1 PE**	S/.	0.16	0.00%	-0.62%	-6.43%	15.94%	90.00%	199	1.10	0.00	-	40.75	Mining	1.02%
▲ BACKUSI1 PE**	S/.	23.25	1.09%	0.00%	-3.13%	15.38%	100.00%	44,604	0.54	1.51	11.15	8,566.15	Industrial	0.82%
▼ BAP PE**	US\$	151.15	-1.34%	-2.23%	-10.03%	-5.88%	100.00%	340,905	1.65	5.82	-	14,265.89	Diverse	5.82%
▲ BVN PE**	US\$	11.50	2.68%	0.17%	11.54%	-4.17%	100.00%	553,886	1.23	0.00	-	3,169.80	Mining	5.88%
- CASAGRC1 PE**	S/.	5.90	0.85%	0.68%	-4.07%	24.21%	90.00%	7,083	0.61	3.83	10.59	133.96	Agricultural	1.31%
- BBVAC1 PE**	S/.	2.40	0.00%	0.00%	-3.61%	10.60%	100.00%	183,396	0.67	3.60	25.12	4,223.84	Finance	2.85%
- CORAREI1 PE**	S/.	1.14	0.00%	-0.87%	-0.87%	28.09%	100.00%	63,509	0.58	6.12	6.80	419.72	Industrial	1.72%
▲ CPACASC1 PE**	S/.	5.97	0.51%	0.84%	-4.63%	12.64%	100.00%	6,421	0.59	3.85	42.64	734.21	Industrial	2.38%
▲ CVERDEC1 PE**	US\$	26.00	1.56%	-0.50%	6.78%	24.28%	100.00%	266,308	0.90	0.00	42.26	9,101.46	Mining	5.25%
▲ ENGEPEC1 PE**	S/.	2.68	0.37%	3.08%	11.67%	34.00%	90.00%	15,406	0.50	8.20	16.38	2,050.69	Public Services	1.44%
- ENDISPC1**	S/.	6.00	0.00%	1.69%	-4.00%	11.11%	70.00%	14,424	0.49	0.00	14.07	1,032.75	Public Services	0.98%
- FERREYC1 PE**	S/.	2.18	0.00%	1.87%	6.86%	25.29%	100.00%	91,849	0.57	3.52	14.50	573.33	Diverse	4.90%
- AENZAC1 PE**	S/.	1.75	0.00%	0.00%	-2.23%	0.57%	100.00%	6,793	0.80	0.00	-	411.29	Diverse	4.05%
▲ IFS PE**	US\$	31.21	0.68%	-0.29%	-4.56%	0.87%	100.00%	133,661	1.31	5.61	34.88	3,603.12	Diverse	7.22%
- INRET1 PE**	US\$	45.00	0.00%	-0.22%	1.83%	14.80%	100.00%	8,100	0.61	1.25	56.71	4,626.33	Diverse	5.28%
- LUSUR1 PE**	S/.	14.93	0.00%	-32.14%	-46.68%	-41.45%	90.00%	25,895	0.47	4.68	14.65	1,959.67	Public Services	1.81%
▼ MINSUR1 PE**	S/.	2.85	-1.72%	-1.72%	18.75%	54.05%	100.00%	45,038	0.79	0.00	75.86	2,214.76	Mining	3.09%
- PML PE**	US\$	0.14	0.70%	0.00%	-4.00%	35.85%	80.00%	3,120	1.49	0.00	-	38.04	Mining	2.12%
- RELAPAC1 PE**	S/.	0.13	0.00%	3.13%	62.96%	91.30%	100.00%	21,359	0.41	0.00	-	296.00	Industrial	2.12%
▼ SCCO PE**	US\$	77.57	-1.81%	7.74%	8.63%	17.71%	100.00%	24,503	0.87	2.19	36.06	59,967.29	Mining	2.14%
▼ SIDERC1 PE**	S/.	1.02	-0.97%	0.00%	2.00%	20.00%	100.00%	14,838	0.84	27.15	12.12	337.60	Industrial	1.43%
▼ TV PE**	US\$	0.15	-1.33%	5.71%	-17.78%	0.68%	100.00%	82,824	1.51	0.00	-	146.39	Mining	2.93%
▼ UNACEMC1 PE**	S/.	1.84	-0.54%	3.95%	1.10%	18.71%	100.00%	160,174	0.80	0.71	40.31	901.74	Industrial	3.00%
▼ VOLCABC1 PE**	S/.	0.85	-2.30%	3.66%	6.25%	63.46%	100.00%	70,582	0.88	0.00	-	934.01	Mining	5.90%
▼ NEXAPEC1 PE**	S/.	3.85	-1.28%	-1.28%	-3.75%	36.04%	100.00%	21,744	1.10	0.00	-	1,370.86	Mining	1.56%

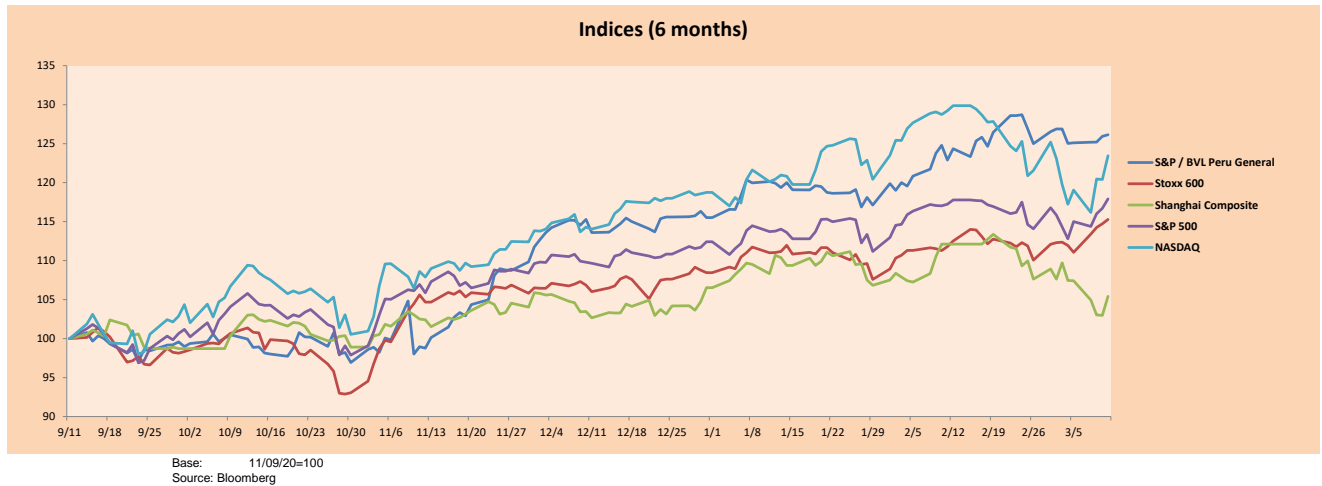
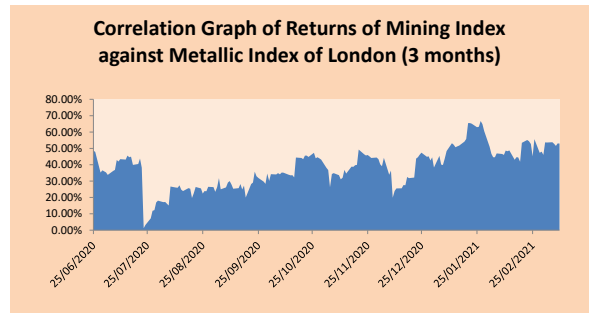
Quantity of shares: 26
Source: Bloomberg, Economática
* Bloomberg Industry Classification System
** PER is used in the stock market and original currency of the instrument
*Legend: Variation 1D: 1 Day; 5D: 5 Days, 1M: 1 Month; YTD: Var.% 12/31/20 to date

Sectorial Indices

	Close	1D*	5D*	30D*	YTD*	Beta
▼ S&P/BVLMining	460.11	-0.24%	5.10%	10.72%	17.99%	0.90
▲ S&P/BVLConsumer	1,257.21	0.33%	-0.59%	0.01%	15.49%	0.38
▲ S&P/BVLIndustrials	222.52	0.12%	1.87%	1.98%	16.77%	0.50
▼ S&P/BVLFinancials	1,009.24	-0.67%	-1.48%	-7.47%	-2.39%	1.77
▲ S&P/BVLConstruction	235.58	0.17%	1.84%	-0.66%	12.65%	0.54
▲ S&P/BVLPublicSvcs	654.92	0.13%	1.60%	-3.94%	6.65%	0.15
▲ S&P/BVLElectricUtil	639.37	0.13%	1.60%	-3.94%	6.65%	0.15

S&P/BVLConstructionTRPEN

*Legend: Variation 1D: 1 Day; 5D: 5 Days, 1M: 1 Month; YTD: Var.% 12/31/20 to date



Capital Market Laboratory Coordinator: Economist Bruno Bellido
Collaboration: Piero Best, Maria Camarena, Alonso Stephen Hernández and Adrian Paredes
email: pulsobursatil@ulima.edu.pe
facebook: www.facebook.com/pulsobursatil.ul

The content of this document is just for informational purposes. The information and opinions expressed should not be consider as recommendations for future decisions. Under any circumstances, the Capital Market Laboratory of University of Lima will be responsible for the use of the statements in this document.

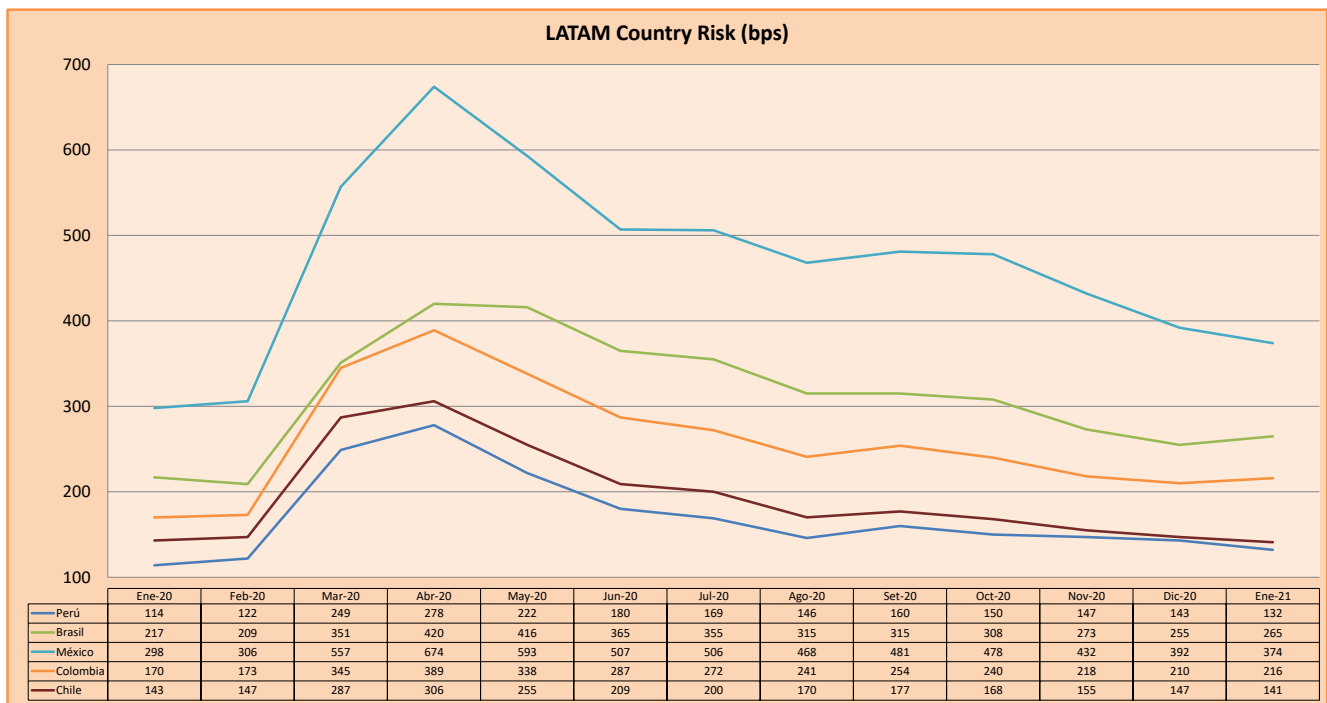
SOVEREIGN RATING

RISK RATINGS				
Moody's	S&P	Fitch		
Aaa	AAA	AAA	Prime	
Aa1	AA+	AA+	High credit quality	
Aa2	AA	AA		
Aa3	AA-	AA-		
A1	A+	A+	Medium-high grade, with low credit risk	
A2	A	A		
A3	A-	A-		
Baa1	BBB+	BBB+	Moderate Credit Risk	
Baa2	BBB	BBB		
Baa3	BBB-	BBB-		
Ba1	BB+	BB+	It has speculative elements and it is subject to substantial credit risk	
Ba2	BB	BB		
Ba3	BB-	BB-		
B1	B+	B+	It is considered speculative and it has high credit risk	
B2	B	B		
B3	B-	B-		
Caa1	CCC+	CCC	Bad credit conditions and it is subject to high credit risk	
Caa2	CCC			
Caa3	CCC-			
Ca	C	DDD	Very close to default or in default	
C	D			DD
				D

Source: Bloomberg

Latin America Credit Rating			
Clasificadora de riesgo			
Country	Moody's	Fitch	S&P
Peru	A3	BBB+	BBB+
México	Ba2	BB-	BB-
Venezuela	C	WD	SD
Brazil	Ba2	BB-	BB-
Colombia	Baa2	BBB-	BBB-
Chile	A1	A-	A+
Argentina	Ca	WD	CCC+
Panama	Baa1	BBB-	BBB

Source: Bloomberg



Source: BCRP

Capital Market Laboratory Coordinator: Economist Bruno Bellido
Collaboration: Piero Best, Maria Camarena, Alonso Stephen Hernández and Adrian Paredes
email: pulsobursatil@ulima.edu.pe
facebook: www.facebook.com/pulsobursatil.ul

The content of this document is just for informational purposes. The information and opinions expressed should not be considered as recommendations for future decisions. Under any circumstances, the Capital Market Laboratory of University of Lima will be responsible for the use of the statements in this document.