

# PULSO BURSÁTIL

FACULTAD DE CIENCIAS EMPRESARIALES Y ECONÓMICAS  
CARRERA DE ECONOMÍA  
LABORATORIO DE MERCADO DE CAPITALES

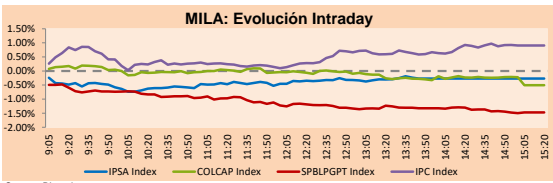


## MILA

Lima, March 16, 2021

Main Indexes	Close	1 D	5 D	1 M	YTD	Cap. Burs. (US\$ bill)
▼ IPSA (Chile)	4,905.05	-0.18%	1.38%	7.59%	17.42%	133.30
▲ IGPA (Chile)	24,682.80	-0.16%	1.32%	7.18%	17.50%	164.39
▲ COLSC (Colombia)	1,052.84	0.08%	0.72%	-2.69%	-0.58%	5.55
▼ COLCAP (Colombia)	1,350.14	-0.50%	0.63%	-1.18%	-6.10%	82.90
▼ S&P/BVL (Perú)*	22,339.99	-1.47%	-1.00%	-1.51%	7.29%	112.65
▼ S&P/BVL SEL (Perú)	593.97	-1.09%	-0.84%	-1.51%	7.72%	90.81
▼ S&P/BVL LIMA 25	29,510.46	-0.76%	-0.52%	0.33%	17.11%	111.66
▲ IPC (México)	48,203.95	0.91%	2.40%	6.97%	9.39%	296.22
▲ S&P MILA 40	561.52	-1.24%	1.42%	1.88%	5.03%	6,105.22

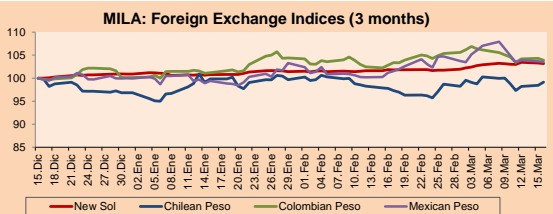
\*Legend: Variation 1D: 1 day; 5D: 5 days; 1M: 1 Month; YTD: Var% 12/31/20 to date



Source: Bloomberg

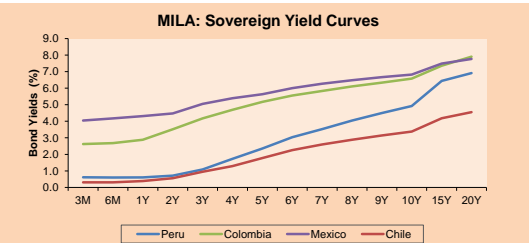
Currency	Price	1D*	5D*	30 D*	YTD*
▼ New Sol (PEN)	3.7005	-0.12%	0.04%	1.54%	2.28%
▲ Chilean Peso (CLP)	728.65	0.71%	-0.88%	0.90%	2.37%
▼ Colombian Peso (COP)	3,558.49	-0.38%	-1.11%	1.38%	3.75%
▼ Mexican Peso (MXN)	20.61	-0.19%	-2.74%	3.30%	3.50%

\*Legend: Variation 1D: 1 day; 5D: 5 days; 1M: 1 Month; YTD: Var% 12/31/20 to date



Base: 15/12/20=100  
Source: Bloomberg

Fixed Income	Currency	Price	Bid Yield (%)	Ask Yield (%)	Duration
PERU 7.35 07/21/25	USD	124.255	1.60	1.50	3.82
PERU 4.125 08/25/27	USD	112.606	2.07	1.99	5.77
PERU 8.75 11/21/33	USD	155.756	3.35	3.30	8.73
PERU 6.55 03/14/37	USD	136.313	3.59	3.52	10.60
PERU 5.625 11/18/2050	USD	133.113	3.79	3.73	16.38
CHILE 2.25 10/30/22	USD	102.707	0.69	0.45	1.58
CHILE 3.125 01/21/26	USD	108.069	1.44	1.35	4.53
CHILE 3.625 10/30/42	USD	105.095	3.33	3.26	15.35
COLOM 11.85 03/09/28	USD	158.896	2.70	2.44	5.37
COLOM 10.375 01/28/33	USD	155.05	4.50	4.25	7.92
COLOM 7.375 09/18/37	USD	133.392	4.54	4.44	10.38
COLOM 6.125 01/18/41	USD	120.233	4.60	4.53	12.37
MEX 4 10/02/23	USD	120.233	4.596	4.53	12.37
MEX5.55 01/45	USD	117.66	4.38	4.33	14.13



Source: Bloomberg

## Equity

Largest gains	Exchange	Currency	Price	▲ %
SONDA SA	Chile	CLP	465.00	4.94
ECOPETROL	Colombia	COP	2480.00	4.29
SMU SA	Chile	CLP	108.37	2.27
ENEL CHILE SA	Chile	CLP	56.72	2.20
ITAU CORPBANCA	Chile	CLP	2.93	2.09

Per Turnover	Exchange	Amount (US\$)
ENEL AMERICAS SA	Chile	29,588,625
SOQUIMICH-B	Chile	19,841,742
ECOPETROL	Colombia	16,467,374
ANDINA-PREF B	Chile	9,578,459
FALABELLA SA	Chile	8,978,453

Largest losses	Exchange	Currency	Price	▼ %
BUENAVENTURA-ADF	Peru	USD	11.1	-3.48
GRUPO ARGOS SA	Colombia	COP	12500	-2.65
CENCOSUD SHOPPIN	Chile	CLP	1417.9	-1.47
BANCO SANTANDER	Chile	CLP	45.6	-1.38
ENGIE ENERGIA CH	Chile	CLP	835	-1.30

Per Volume	Exchange	Volume
ITAU CORPBANCA	Chile	429,520,518
ENEL AMERICAS SA	Chile	175,019,697
BANCO SANTANDER	Chile	80,959,098
BANCO DE CHILE	Chile	64,046,868
ENEL CHILE SA	Chile	40,199,952

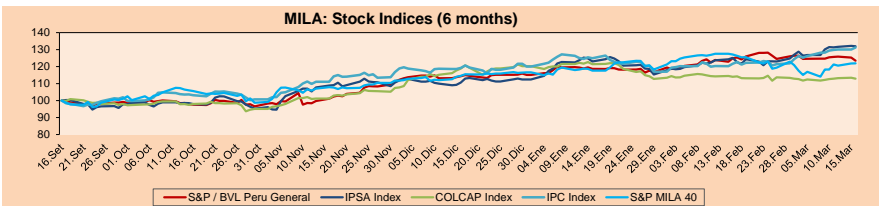
## MILA

Peru: The General Index of the BVL ended today's session with a negative result of -1.47%. The index maintains an annual accumulated positive trend of + 7.29% in local currency, while the adjusted return in dollars amounts to + 4.90%. Then, the S&P / BVL Peru SEL varied by -1.09% while the S&P / BVL LIMA 25 by -0.76%. The PEN spot reached \$ / 3,7005. Headline: Telefónica files a lawsuit against Peru before ICSID for breaching investment agreements

Chile: The IPSA index ended the day with a negative return of -0.18%. The sectors most affected during the session were Non-Basic Consumer Products (-1.39%) and Materials (-1.25%). The worst performing stocks were Sociedad Química y Minera de C (-3.09%) and Compañía Cerveceras Unidas SA (-2.12%). Owner: Codeco obtains permission to extend the life of its Radomiro Tomic mine, a US \$ 882M project

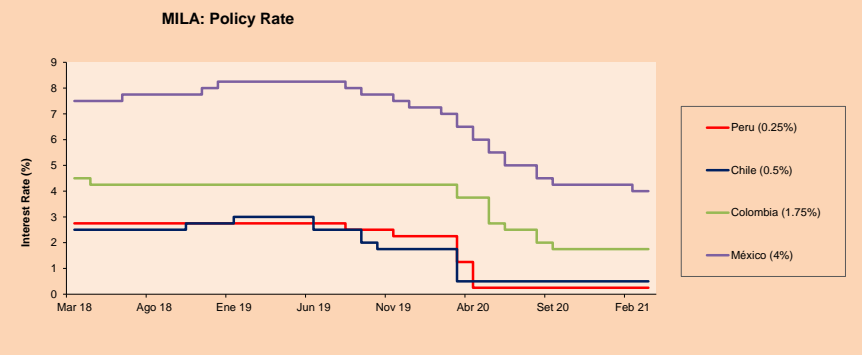
Colombia: The COLCAP index closed today with a negative return of -0.50%. The sectors with the greatest losses on the day were Materials (-1.28%) and Energy (-0.74%). The worst performing stocks were Promigas SA (-2.56%) and Cementos Argos SA (-2.48%). Headline: Colombia's Industry and Retail Sales Back and Fall 1.6% in January

Mexico: The IPC index closed the day with a positive return of + 0.91%. The sectors that benefited the most during the session were Real Estate (+ 3.19%) and Industrial (+ 2.89%). The stocks with the best performance were Grupo Aeroportuario del Centro (+ 8.75%) and Telesites SAB de CV (+ 6.38%). Headline: Mexico's economy would not recover the pre-pandemic level until 2024, according to Crédito y Caución



Base: 17/09/20=100  
Source: Bloomberg

ETFs	Curr.	Close	1D	5D	30 D	YTD	Exchange
▼ iShares MSCI All Peru Caped Index Fund	USD	36.3042	-1.00%	0.18%	-3.60%	4.68%	NYSE Arca
▼ iShares MSCI All Chile Caped Index Fund	USD	34.14	-0.41%	3.39%	5.31%	13.01%	Cboe BZX
▲ Global X MSCI Colombia	USD	10.69	0.47%	3.79%	0.75%	-5.90%	NYSE Arca
▲ iShares MSCI Mexico Capped	USD	44.71	0.88%	5.60%	5.18%	4.00%	NYSE Arca
▲ iShares MSCI Emerging Markets	USD	54.35	0.42%	1.53%	-5.97%	5.19%	NYSE Arca
▲ Vanguard FTSE Emerging Markets	USD	53.07	0.44%	1.39%	-5.55%	5.91%	NYSE Arca
▲ iShares Core MSCI Emergina Markets	USD	65.56	0.49%	1.75%	-5.36%	5.67%	NYSE Arca
▲ iShares JP Morgan Emergina Markets Bonds	USD	63.49	0.65%	1.61%	-2.38%	3.93%	Cboe BZX
▼ Morgan Stanley Emerging Markets Domestic	USD	5.98	-0.17%	0.84%	-4.47%	-4.93%	New York



Source: Bloomberg

Capital Market Laboratory Coordinator: Economist Bruno Bellido  
Collaboration: Piero Best, Maria Camarena, Alonso Stephen Hernández and Adrian Paredes  
email: pulsobursatil@ulima.edu.pe  
facebook: www.facebook.com/pulsobursatil.uil

The content of this document is just for informational purposes. The information and opinions expressed should not be considered as recommendations for future decisions. Under any circumstances, the Capital Market Laboratory of University of Lima will be responsible for the use of the statements in this document.



LIMA

Stocks

Ticker	Currency	Price	1D*	5D*	30D*	YTD*	Frequency	Volume (US\$)	Beta	Dividend Yield (%)	Price Earning	Market Cap. (M US\$)	Economic Sector*	Index Weight
▲ ALICORC1 PE**	S/.	8.02	0.08%	0.72%	-2.69%	-0.58%	100.00%	12,704	0.67	3.12	20.94	1,848.28	Industrial	3.53%
▲ ATACOCB1 PE**	S/.	0.16	0.00%	1.97%	-6.06%	12.32%	85.00%	7,144	1.10	0.00	-	39.57	Mining	1.02%
- BACKUSI1 PE**	S/.	23.50	0.00%	1.08%	-2.89%	16.63%	100.00%	8,237	0.54	1.49	11.27	8,626.39	Industrial	0.82%
▼ BAP PE**	US\$	151.67	-0.87%	-0.80%	-8.63%	-5.56%	100.00%	1,642,908	1.64	5.80	-	14,314.97	Diverse	5.82%
▼ BVN PE**	US\$	10.85	-2.25%	-4.82%	5.14%	-9.58%	100.00%	318,094	1.20	0.00	-	2,990.64	Mining	5.88%
- CASAGRC1 PE**	S/.	5.90	0.00%	0.00%	-4.84%	24.21%	75.00%	7,101	0.61	0.00	10.59	134.30	Agricultural	1.31%
- BBVAC1 PE**	S/.	2.40	0.00%	0.84%	-4.00%	10.60%	100.00%	109,570	0.67	3.60	25.12	4,234.58	Finance	2.85%
- CORAREI1 PE**	S/.	1.14	0.00%	0.00%	-1.72%	28.09%	100.00%	21,450	0.58	6.12	6.80	420.78	Industrial	1.72%
▼ CPACASC1 PE**	S/.	5.90	-0.84%	-2.64%	-3.59%	11.32%	100.00%	165,365	0.59	3.90	42.14	728.05	Industrial	2.38%
▼ CVERDEC1 PE**	US\$	25.70	-0.39%	1.58%	7.08%	22.85%	100.00%	498,721	0.90	0.00	41.77	8,996.44	Mining	5.25%
▼ ENGEPEC1 PE**	S/.	2.64	-1.49%	2.33%	8.20%	32.00%	85.00%	43,993	0.49	8.33	16.14	2,025.21	Public Services	1.44%
- ENDISPC1**	S/.	6.00	0.00%	0.00%	-4.00%	11.11%	70.00%	79,298	0.49	0.00	14.07	1,035.37	Public Services	0.98%
▲ FERREYC1 PE**	S/.	2.20	0.46%	0.92%	9.45%	26.44%	100.00%	192,216	0.55	3.48	14.63	580.06	Diverse	4.90%
▲ AENZAC1 PE**	S/.	1.70	-2.86%	-2.86%	-1.73%	-2.30%	95.00%	367,407	0.81	0.00	-	400.56	Diverse	4.05%
▼ IFS PE**	US\$	30.70	-0.32%	-0.97%	-5.25%	-0.78%	100.00%	3,101	1.31	5.70	34.23	3,544.24	Diverse	7.22%
▼ INRETC1 PE**	US\$	44.50	-0.89%	-1.11%	3.49%	13.52%	100.00%	1,511,933	0.62	1.27	55.95	4,574.93	Diverse	5.28%
▼ LUSURC1 PE**	S/.	13.80	-6.12%	-31.68%	-50.71%	-45.88%	85.00%	110,618	0.51	5.06	13.54	1,815.95	Public Services	1.81%
▼ MINSUR1 PE**	S/.	2.80	-0.71%	-2.78%	12.00%	51.35%	95.00%	70,337	0.79	0.00	74.71	2,181.44	Mining	3.09%
▲ PML PE**	US\$	0.16	12.32%	7.64%	6.16%	46.23%	75.00%	25,809	1.49	0.00	-	40.95	Mining	2.12%
▲ RELAPAC1 PE**	S/.	0.14	1.49%	7.94%	52.81%	97.10%	100.00%	65,632	0.40	0.00	-	305.74	Industrial	2.12%
▼ SCCO PE**	US\$	73.78	-4.89%	0.64%	2.90%	11.96%	95.00%	50,065	0.89	2.30	34.30	57,037.35	Mining	2.14%
- SIDERC1 PE**	S/.	1.03	0.98%	0.98%	5.10%	21.18%	95.00%	6,819	0.84	26.88	12.24	341.78	Industrial	1.43%
▲ TV PE**	US\$	0.15	0.00%	5.63%	-15.73%	2.04%	100.00%	60,048	1.51	0.00	-	148.36	Mining	2.93%
▼ UNACEMC1 PE**	S/.	1.82	-1.09%	-1.09%	-1.09%	17.42%	100.00%	28,195	0.80	0.71	39.87	894.20	Industrial	3.00%
▼ VOLCABC1 PE**	S/.	0.84	-1.18%	-3.45%	5.00%	61.54%	100.00%	367,633	0.88	0.00	-	925.37	Mining	5.90%
▼ NEXAPEC1 PE**	S/.	3.80	-1.04%	-3.80%	-6.17%	34.28%	95.00%	2,189	1.09	0.00	-	1,356.65	Mining	1.56%

Quantity of shares: 26

Source: Bloomberg, Economática

\* Bloomberg Industry Classification System

\*\* PER is used in the stock market and original currency of the instrument

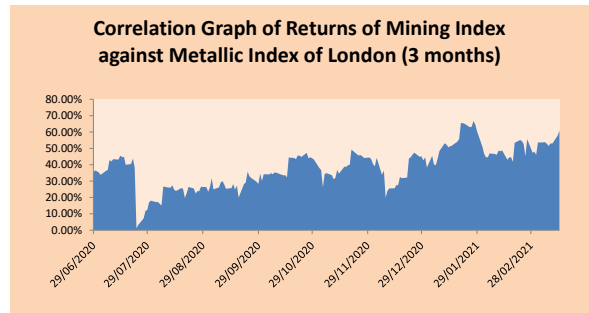
\*Legend: Variation 1D: 1 Day; 5D: 5 Days, 1M: 1 Month; YTD: Var.% 12/31/20 to date

Sectorial Indices

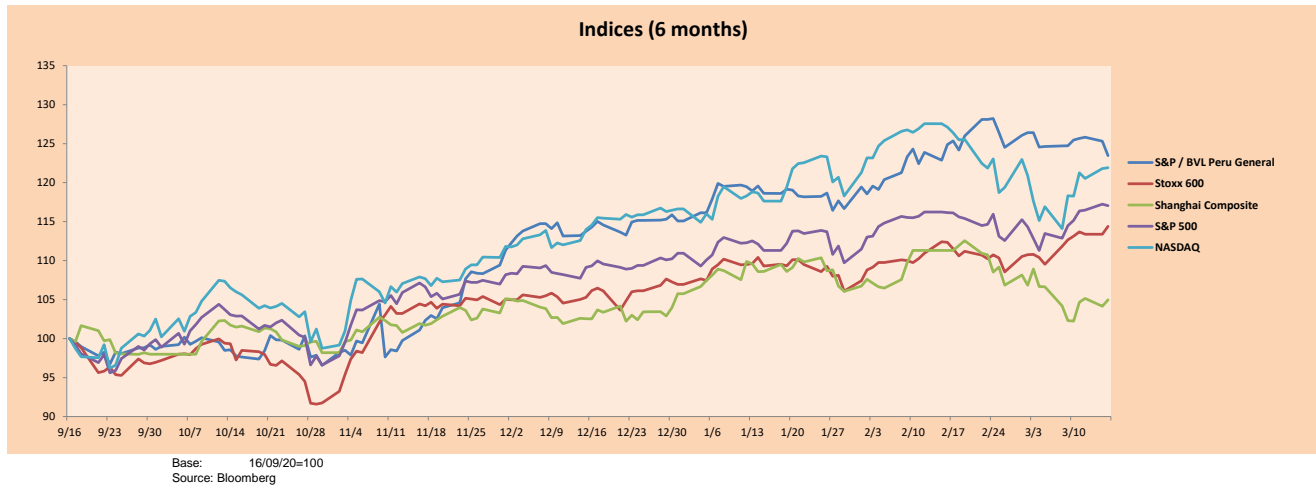
	Close	1D*	5D*	30D*	YTD*	Beta
▼ S&P/BVLMining	438.87	-3.64%	-0.98%	5.06%	12.55%	0.91
▼ S&P/BVLConsumer	1,249.49	-0.60%	-0.29%	0.52%	14.78%	0.39
▼ S&P/BVLIndustrials	221.21	-0.68%	-0.58%	2.46%	16.08%	0.50
▼ S&P/BVLFinancials	1,008.21	-0.90%	-0.72%	-6.70%	-2.49%	1.76
▼ S&P/BVLConstruction	232.50	-1.22%	-1.37%	-0.96%	11.18%	0.54
▼ S&P/BVLPublicSvcs	654.11	-0.51%	1.16%	-4.52%	6.52%	0.15
▼ S&P/BVLElectricUtil	638.57	-0.51%	1.16%	-4.52%	6.51%	0.15

S&P/BVLConstructionTRPEN

\*Legend: Variation 1D: 1 Day; 5D: 5 Days, 1M: 1 Month; YTD: Var.% 12/31/20 to date



Indices (6 months)



Base: 16/09/20=100  
Source: Bloomberg

Capital Market Laboratory Coordinator: Economist Bruno Bellido  
Collaboration: Piero Best, Maria Camarena, Alonso Stephen Hernández and Adrian Paredes  
email: pulsoBursatil@ulima.edu.pe  
facebook: www.facebook.com/pulsoBursatil.ul

The content of this document is just for informational purposes. The information and opinions expressed should not be consider as recommendations for future decisions. Under any circumstances, the Capital Market Laboratory of University of Lima will be responsible for the use of the statements in this document.

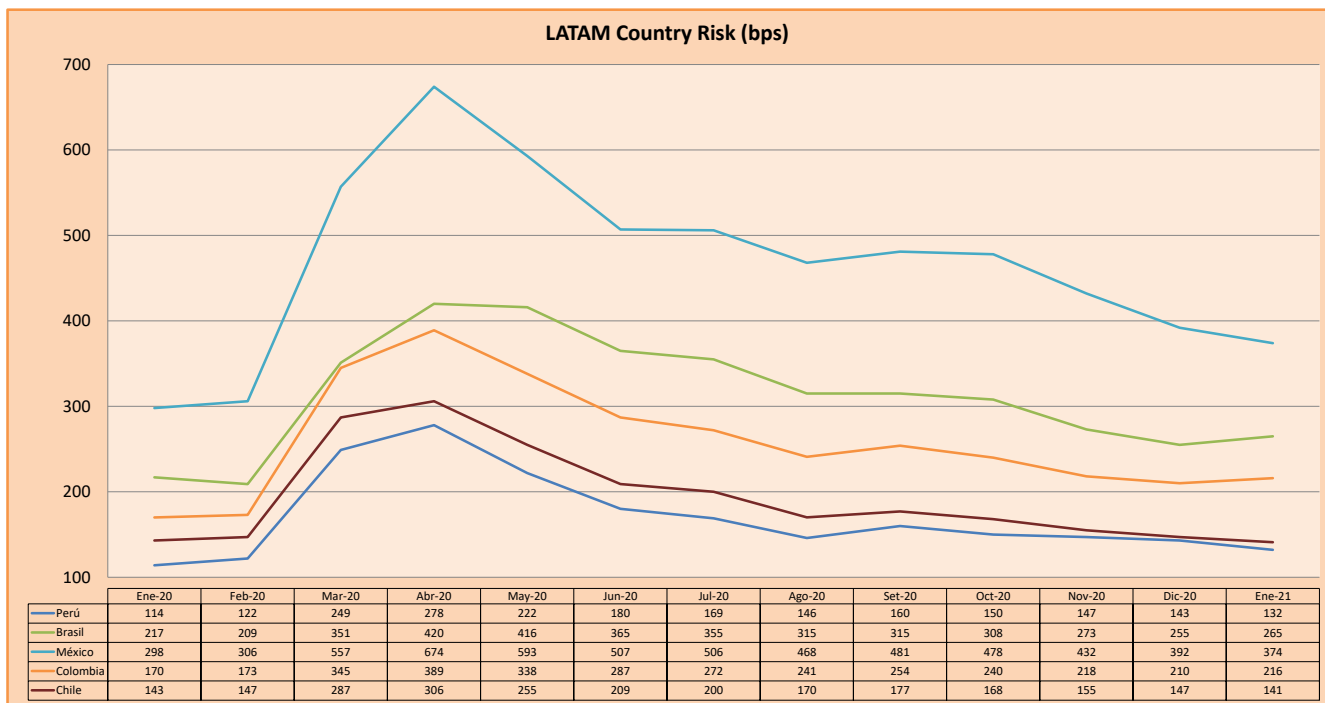
## SOVEREIGN RATING

RISK RATINGS			
Moody's	S&P	Fitch	
Aaa	AAA	AAA	Prime
Aa1 Aa2 Aa3	AA+ AA AA-	AA+ AA AA-	High credit quality
A1 A2 A3	A+ A A-	A+ A A-	Medium-high grade, with low credit risk
Baa1 Baa2 Baa3	BBB+ BBB BBB-	BBB+ BBB BBB-	Moderate Credit Risk
Ba1 Ba2 Ba3	BB+ BB BB-	BB+ BB BB-	It has speculative elements and it is subject to substantial credit risk
B1 B2 B3	B+ B B-	B+ B B-	It is considered speculative and it has high credit risk
Caa1 Caa2 Caa3	CCC+ CCC CCC-	CCC	Bad credit conditions and it is subject to high credit risk
Ca C	C D	DDD DD D	Very close to default or in default

Source: Bloomberg

Latin America Credit Rating			
Clasificadora de riesgo			
Country	Moody's	Fitch	S&P
Peru	A3	BBB+	BBB+
México	Ba2	BB-	BB-
Venezuela	C	WD	SD
Brazil	Ba2	BB-	BB-
Colombia	Baa2	BBB-	BBB-
Chile	A1	A-	A+
Argentina	Ca	WD	CCC+
Panama	Baa1	BBB-	BBB

Source: Bloomberg



Source: BCRP

Capital Market Laboratory Coordinator: Economist Bruno Bellido  
Collaboration: Piero Best, Maria Camarena, Alonso Stephen Hernández and Adrian Paredes  
email: [pulsobursatil@ulima.edu.pe](mailto:pulsobursatil@ulima.edu.pe)  
facebook: [www.facebook.com/pulsobursatil.ul](https://www.facebook.com/pulsobursatil.ul)

The content of this document is just for informational purposes. The information and opinions expressed should not be considered as recommendations for future decisions. Under any circumstances, the Capital Market Laboratory of University of Lima will be responsible for the use of the statements in this document.