

PULSO BURSÁTIL

FACULTAD DE CIENCIAS EMPRESARIALES Y ECONÓMICAS
CARRERA DE ECONOMÍA
LABORATORIO DE MERCADO DE CAPITALES

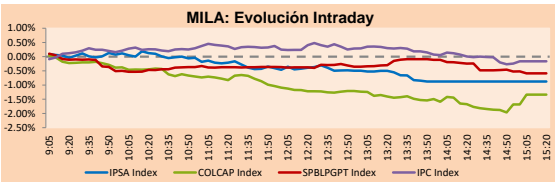


MILA

Lima, March 18, 2021

Main Indexes	Close	1 D	5 D	1 M	YTD	Cap. Burs. (US\$ bill)
▼ IPSA (Chile)	4,878.67	-0.63%	-0.05%	5.51%	16.79%	134.37
▼ IGPA (Chile)	24,572.01	-0.55%	-0.03%	5.35%	16.97%	165.93
▼ COLSC (Colombia)	1,043.33	-0.79%	-0.04%	-3.36%	-1.48%	5.49
▼ COLCAP (Colombia)	1,325.59	-1.34%	-1.83%	-1.99%	-7.81%	80.68
▼ S&P/BVL (Perú)*	22,312.08	-0.59%	-1.88%	-2.12%	7.16%	112.52
▼ S&P/BVL SEL (Perú)	590.43	-0.89%	-2.42%	-2.38%	7.08%	89.52
▼ S&P/BVL LIMA 25	29,484.99	-0.50%	-1.11%	-0.34%	17.01%	111.54
▼ IPC (México)	47,572.39	-0.22%	0.05%	5.95%	7.95%	293.92
▼ S&P MILA 40	560.18	-0.57%	-2.00%	0.51%	4.78%	6,021.14

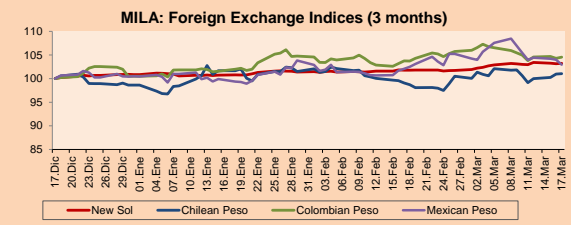
*Legend: Variation 1D: 1 day; 5D: 5 days; 1M: 1 Month; YTD: Var% 12/31/20 to date



Source: Bloomberg

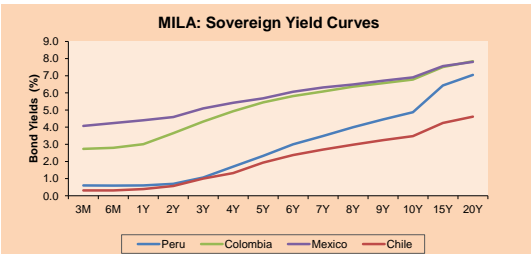
Currency	Price	1D*	5D*	30 D*	YTD*
▲ New Sol (PEN)	3,7088	0.13%	0.42%	1.52%	2.51%
▲ Chilean Peso (CLP)	718.72	-1.46%	0.45%	0.02%	0.98%
▲ Colombian Peso (COP)	3,570.78	0.10%	0.79%	1.40%	4.11%
▲ Mexican Peso (MXN)	20.49	0.42%	-0.58%	1.64%	2.87%

*Legend: Variation 1D: 1 day; 5D: 5 days; 1M: 1 Month; YTD: Var% 12/31/20 to date



Base: 17/12/20=100
Source: Bloomberg

Fixed Income	Currency	Price	Bid Yield (%)	Ask Yield (%)	Duration
PERU 7.35 07/21/25	USD	124.11	1.63	1.51	3.82
PERU 4.125 08/25/27	USD	112.188	2.13	2.05	5.77
PERU 8.75 11/21/33	USD	155.081	3.41	3.34	8.75
PERU 6.55 03/14/37	USD	135.459	3.65	3.57	10.61
PERU 5.625 11/18/2050	USD	132.025	3.84	3.79	16.45
CHILE 2.25 10/30/22	USD	102.707	0.67	0.44	1.58
CHILE 3.125 01/21/26	USD	107.732	1.51	1.41	4.53
CHILE 3.625 10/30/42	USD	103.903	3.39	3.35	15.40
COLOM 11.85 03/09/28	USD	158.589	2.73	2.47	5.37
COLOM 10.375 01/28/33	USD	155.117	4.49	4.25	7.93
COLOM 7.375 09/18/37	USD	132.693	4.58	4.50	10.71
COLOM 6.125 01/18/41	USD	119.556	4.64	4.58	12.41
MEX 4 10/02/23	USD	119.556	4.64	4.577	12.41
MEX5.55 01/45	USD	116.306	4.45	4.42	14.20



Source: Bloomberg

Equity

Largest gains	Exchange	Currency	Price	▲ %	Largest losses	Exchange	Currency	Price	▼ %
CAP	Chile	CLP	12520.00	3.90	ECOPETROL	Colombia	COP	2350	-4.35
AERO DEL SURES-B	Mexico	MXN	390.36	2.38	CORFICOLOMBIANA	Colombia	COP	31100	-3.86
ISA SA	Colombia	COP	23680.00	1.28	PARQUE ARAUCO	Chile	CLP	1285	-3.82
FERREYCORP SAA	Peru	PEN	2.23	0.91	CEMENTOS ARGOS	Colombia	COP	5020	-3.37
GRUPO TELEV-CPO	Mexico	MXN	37.91	0.88	GRUPO ARGOS SA	Colombia	COP	11900	-2.78

Per Turnover

FALABELLA SA	Exchange	Amount (US\$)
FALABELLA SA	Chile	30,197,045
GRUPO MEXICO-B	Mexico	28,256,547
WALMART DE MEXIC	Mexico	26,440,590
GRUPO F BANORT-O	Mexico	23,394,035
AMERICA MOVIL-L	Mexico	19,385,316

Per Volume

ITAU CORPBANCA	Exchange	Volume
ITAU CORPBANCA	Chile	466,059,039
BANCO SANTANDER	Chile	74,062,288
AGUAS ANDINAS-A	Chile	50,556,587
BANCO DE CHILE	Chile	44,161,298
ENEL CHILE SA	Chile	33,256,259

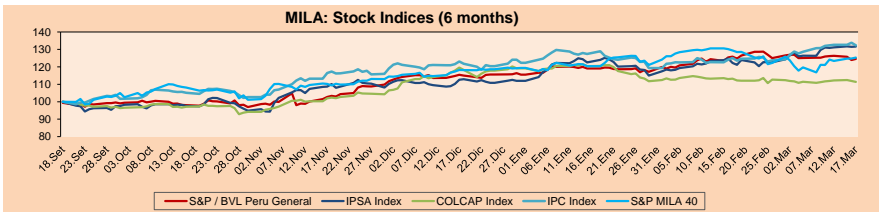
MILA

Peru: The General Index of BVL ended today's session with a positive result of +0.46%. The index maintains an annual cumulative positive trend of +7.79% in local currency, while the dollar-adjusted performance amounted to +5.29%. Then, the S&P / BVL Peru SEL varied by +0.29% while the S&P / BVL LIMA 25 by +0.42%. The spot PEN reached S/3.7039. Headline: Economy Commission gave the green light to withdraw 50% of CTS for those earning less than S/2,400

Chile: The IPSA index ended the day with a positive return of +0.09%. The most benefited sectors of the day were Energy (+1.34%) and Information Technology (+1.24%). The best performing stocks were Ripley Corporación SA (+3.03%) and Plaza (+2.13%). Headline: Chilean non-copper exports started the year with growth of 8.5%, compared to 2020

Colombia: The COLCAP index closed today with a negative return of -0.49%. The sectors with the largest losses during the day were Communication services (-1.11%) and Materials (-0.98%). The worst performing stocks were Cementos Argos SA (-1.98%) and Grupo Aval Acciones y Valores (-1.87%). Headline: Tax Commission recommends extending IVA, President Duque raised social points of the tax reform

Mexico: The IPC index closed the day with a negative performance of -1.09%. The sectors that suffered the most during the day were Consumer Staples (-2.31%) and Financials (-1.87%). The worst performing stocks were Wal-Mart de México SAB de CV (-4.22%) and Grupo Financiero Banorte SAB de CV (-2.89%). Headline: The Ministry of National Defense requests 30,860 pesos to consult studies on the Santa Lucia airport

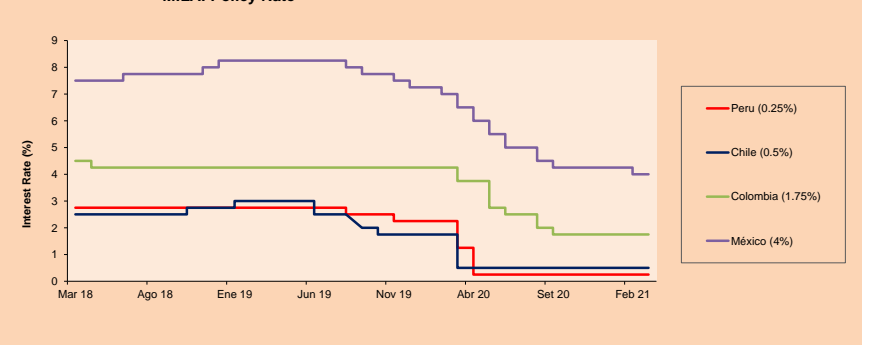


Base: 18/09/20=100
Source: Bloomberg

ETFs

ETFs	Curr.	Close	1D	5D	30 D	YTD	Exchange
▼ iShares MSCI All Peru Caped Index Fund	USD	35.76	-1.54%	-2.96%	-5.17%	3.11%	NYSE Arca
▼ iShares MSCI All Chile Caped Index Fund	USD	34.24	-1.27%	-0.72%	4.17%	13.34%	Cboe BZX
▼ Global X MSCI Colombia	USD	10.41	-1.33%	-2.30%	-1.70%	-8.36%	NYSE Arca
▼ iShares MSCI Mexico Capped	USD	44.34	-0.67%	0.70%	4.53%	3.14%	NYSE Arca
▼ iShares MSCI Emerging Markets	USD	53.42	-1.84%	-2.82%	-7.80%	3.39%	NYSE Arca
▼ Vanguard FTSE Emerging Markets	USD	52.29	-1.54%	-2.84%	-7.20%	4.35%	NYSE Arca
▼ iShares Core MSCI Emerging Markets	USD	64.49	-1.66%	-2.60%	-7.16%	3.95%	NYSE Arca
▼ iShares JP Morgan Emerging Markets Bonds	USD	62.67	-1.28%	-1.21%	-3.84%	2.60%	Cboe BZX
▼ Morgan Stanley Emerging Markets Domestic	USD	5.92	-1.33%	-1.17%	-4.82%	-5.88%	New York

MILA: Policy Rate



Source: Bloomberg

Capital Market Laboratory Coordinator: Economist Bruno Bellido
Collaboration: Piero Best, Maria Camarena, Alonso Stephen Hernández and Adrian Paredes
email: pulsobursatil@ulima.edu.pe
facebook: www.facebook.com/pulsobursatil.ul

The content of this document is just for informational purposes. The information and opinions expressed should not be considered as recommendations for future decisions. Under any circumstances, the Capital Market Laboratory of University of Lima will be responsible for the use of the statements in this document.

LIMA

Stocks

Ticker	Currency	Price	1D*	5D*	30D*	YTD*	Frequency	Volume (US\$)	Beta	Dividend Yield (%)	Price Earning	Market Cap. (M US\$)	Economic Sector*	Index Weight
▼ ALICORC1 PE**	S/.	7.93	-0.79%	-0.04%	-3.36%	-1.48%	100.00%	44,260	0.67	3.15	20.71	1,823.58	Industrial	3.53%
▲ ATACOB1 PE**	S/.	0.16	1.94%	-1.25%	-4.82%	14.49%	80.00%	14,506	1.10	0.00	-	40.25	Mining	1.02%
- BACKUS1 PE**	S/.	23.25	0.00%	1.09%	-3.53%	15.38%	100.00%	16,355	0.54	1.51	11.15	8,568.69	Industrial	0.82%
▼ BAP PE**	US\$	147.50	-1.64%	-3.72%	-10.66%	-8.16%	100.00%	262,138	1.64	5.97	-	13,921.39	Diverse	5.82%
▲ BVN PE**	US\$	11.18	0.45%	-0.18%	8.33%	-6.83%	100.00%	84,722	1.21	0.00	-	3,081.59	Mining	5.88%
- CASAGRC1 PE**	S/.	5.80	0.00%	-0.85%	-3.33%	22.11%	75.00%	13,074	0.61	3.90	10.41	131.73	Agricultural	1.31%
- BBVAC1 PE**	S/.	2.43	0.00%	1.25%	-2.41%	11.98%	100.00%	15,745	0.66	3.55	25.43	4,277.90	Finance	2.85%
- CORARE1 PE**	S/.	1.13	-1.74%	-0.88%	-1.74%	26.97%	100.00%	40,384	0.57	6.18	6.74	411.68	Industrial	1.72%
- CPACASC1 PE**	S/.	5.92	0.00%	-0.34%	-2.15%	11.70%	100.00%	277,222	0.59	3.89	42.29	728.71	Industrial	2.38%
- CVERDEC1 PE**	US\$	26.17	0.00%	2.23%	4.68%	25.10%	100.00%	386,780	0.90	0.00	42.54	9,160.97	Mining	5.25%
▼ ENGEPEC1 PE**	S/.	2.64	-0.38%	-1.12%	10.00%	32.00%	90.00%	17,250	0.49	8.33	16.14	2,020.68	Public Services	1.44%
▼ ENDISPC1**	S/.	6.05	-0.33%	0.83%	-1.63%	12.04%	70.00%	156,310	0.49	0.00	14.19	1,041.66	Public Services	0.98%
▲ FERREYC1 PE**	S/.	2.23	0.90%	2.29%	8.25%	28.16%	100.00%	866,773	0.54	3.44	14.83	586.65	Diverse	4.90%
▲ AENZAC1 PE**	S/.	1.73	1.17%	-1.14%	0.58%	-0.57%	95.00%	321,133	0.81	0.00	-	406.71	Diverse	4.05%
▲ IFS PE**	US\$	30.00	-2.79%	-3.23%	-13.04%	-3.04%	100.00%	385,387	1.31	5.83	33.52	3,463.43	Diverse	7.22%
▼ INRETC1 PE**	US\$	44.00	-1.12%	-2.22%	2.33%	12.24%	100.00%	2,232,784	0.63	1.28	55.43	4,523.52	Diverse	5.28%
▼ LUSURC1 PE**	S/.	13.45	-0.30%	-9.91%	-51.09%	-47.25%	85.00%	50,589	0.51	5.19	13.20	1,765.93	Public Services	1.81%
▼ MINSUR1 PE**	S/.	2.82	-1.05%	-2.76%	-2.76%	52.43%	95.00%	30,116	0.79	0.00	75.09	2,192.10	Mining	3.09%
▼ PML PE**	US\$	0.15	-3.23%	4.90%	0.00%	41.51%	75.00%	7,150	1.49	0.00	-	39.63	Mining	2.12%
▼ RELAPAC1 PE**	S/.	0.14	-0.74%	2.27%	50.00%	95.65%	100.00%	24,744	0.39	0.00	-	302.82	Industrial	2.12%
▼ SCCO PE**	US\$	74.31	-0.11%	-5.94%	1.79%	12.76%	95.00%	8,690	0.86	2.29	34.54	57,447.07	Mining	2.14%
▼ SIDERC1 PE**	S/.	1.02	-0.97%	-0.97%	-0.97%	20.00%	100.00%	20,057	0.84	27.15	12.12	337.70	Industrial	1.43%
- TV PE**	US\$	0.16	0.00%	5.33%	-12.22%	7.48%	100.00%	29,066	1.51	0.00	-	156.28	Mining	2.93%
▼ UNACEMC1 PE**	S/.	1.79	-0.56%	-3.24%	-2.72%	15.48%	100.00%	23,581	0.81	0.73	39.21	877.49	Industrial	3.00%
- VOLCABC1 PE**	S/.	0.84	0.00%	-3.45%	7.69%	61.54%	100.00%	412,786	0.87	0.00	-	923.30	Mining	5.90%
▼ NEXAPEC1 PE**	S/.	3.75	-1.32%	-3.85%	-1.32%	32.51%	90.00%	5,056	1.09	0.00	-	1,335.95	Mining	1.56%

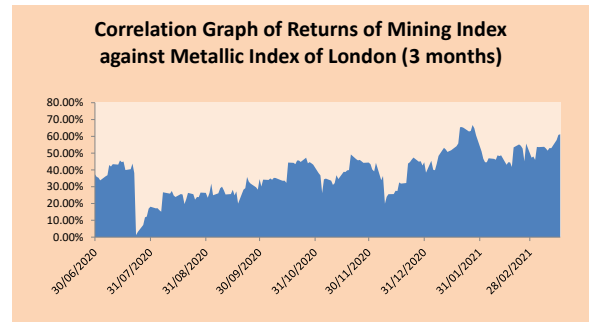
Quantity of shares: 26
 Source: Bloomberg, Economática
 * Bloomberg Industry Classification System
 ** PER is used in the stock market and original currency of the instrument
 *Legend: Variation 1D: 1 Day; 5D: 5 Days; 1M: 1 Month; YTD: Var.% 12/31/20 to date

Sectorial Indices

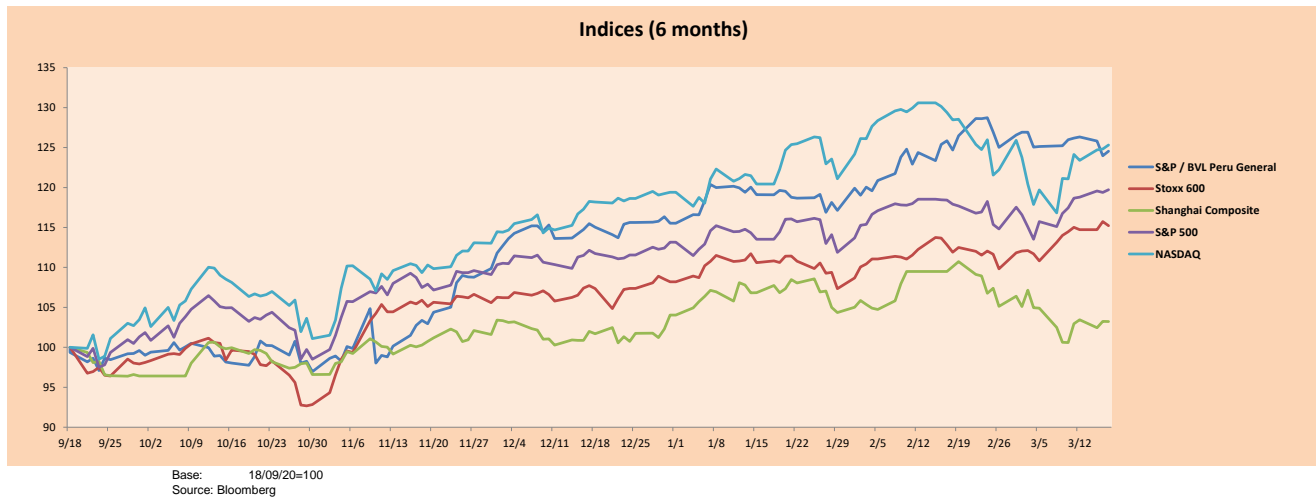
	Close	1D*	5D*	30D*	YTD*	Beta
▲ S&P/BVLMining	445.33	0.08%	-3.44%	4.63%	14.20%	0.91
▲ S&P/BVLConsumer	1,236.74	-1.02%	-1.30%	-0.25%	13.61%	0.38
▲ S&P/BVLIndustrials	221.53	0.26%	-0.33%	2.15%	16.25%	0.49
▲ S&P/BVLFinancials	984.87	-1.55%	-3.07%	-9.20%	-4.74%	1.77
▲ S&P/BVLConstruction	231.61	-0.01%	-1.52%	-0.97%	10.75%	0.54
▲ S&P/BVLPublicSvcs	655.10	-0.19%	0.15%	-2.82%	6.68%	0.15
▲ S&P/BVLElectricUtil	639.54	-0.19%	0.15%	-2.82%	6.68%	0.15

S&P/BVLConstructionTRPEN

*Legend: Variation 1D: 1 Day; 5D: 5 Days; 1M: 1 Month; YTD: Var.% 12/31/20 to date



Indices (6 months)



Base: 18/09/20=100
 Source: Bloomberg

Capital Market Laboratory Coordinator: Economist Bruno Bellido
 Collaboration: Piero Best, Maria Camarena, Alonso Stephen Hernández and Adrian Paredes
 email: pulsohorsatil@ulima.edu.pe
 facebook: www.facebook.com/pulsohorsatil.ul

The content of this document is just for informational purposes. The information and opinions expressed should not be considered as recommendations for future decisions. Under any circumstances, the Capital Market Laboratory of University of Lima will be responsible for the use of the statements in this document.

SOVEREIGN RATING

RISK RATINGS

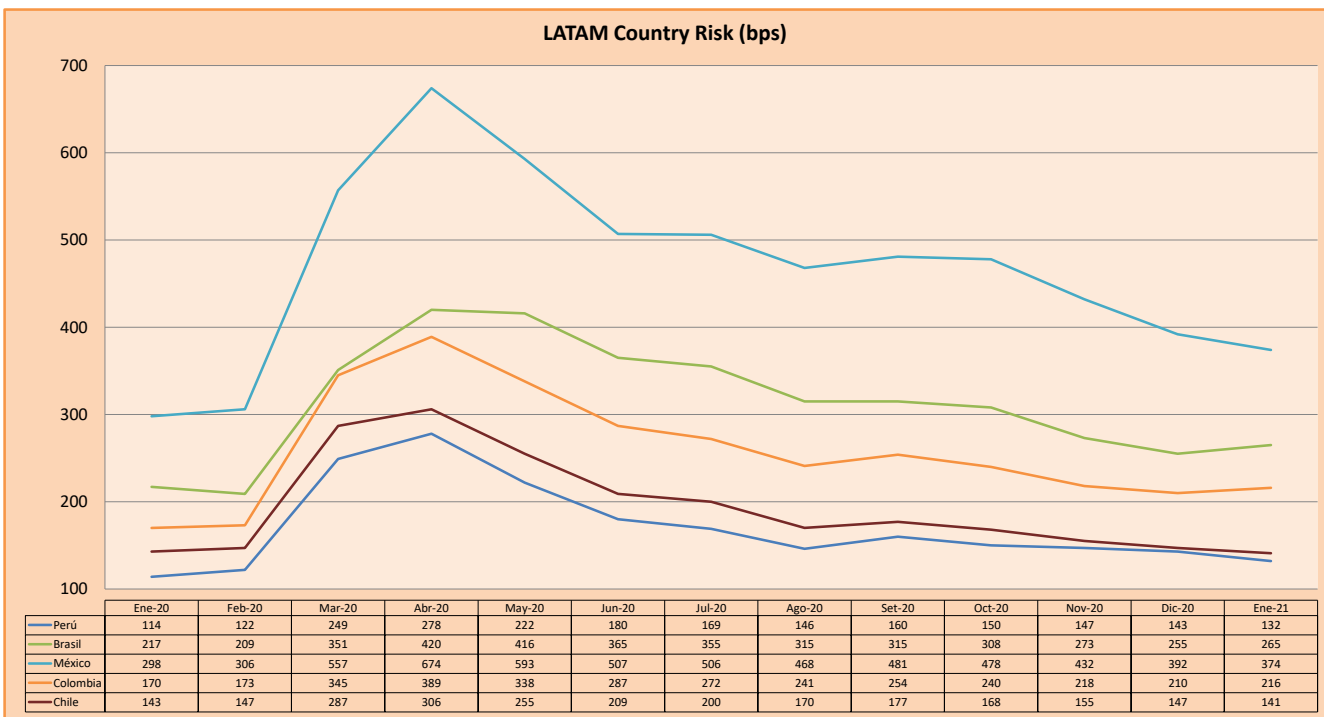
Moody's	S&P	Fitch	
Aaa	AAA	AAA	Prime
Aa1	AA+	AA+	High credit quality
Aa2	AA	AA	
Aa3	AA-	AA-	
A1	A+	A+	Medium-high grade, with low credit risk
A2	A	A	
A3	A-	A-	
Baa1	BBB+	BBB+	Moderate Credit Risk
Baa2	BBB	BBB	
Baa3	BBB-	BBB-	
Ba1	BB+	BB+	It has speculative elements and it is subject to substantial credit risk
Ba2	BB	BB	
Ba3	BB-	BB-	
B1	B+	B+	It is considered speculative and it has high credit risk
B2	B	B	
B3	B-	B-	
Caa1	CCC+		Bad credit conditions and it is subject to high credit risk
Caa2	CCC		
Caa3	CCC-	CCC	
Ca	C		Very close to default or in default
		DDD	
C	D	DD D	

Source: Bloomberg

Latin America Credit Rating			
Clasificadora de riesgo			
Country	Moody's	Fitch	S&P
Peru	A3	BBB+	BBB+
México	Ba2	BB-	BB-
Venezuela	C	WD	SD
Brazil	Ba2	BB-	BB-
Colombia	Baa2	BBB-	BBB-
Chile	A1	A-	A+
Argentina	Ca	WD	CCC+
Panama	Baa2	BBB-	BBB

Source: Bloomberg

LATAM Country Risk (bps)



Source: BCRP

Capital Market Laboratory Coordinator: Economist Bruno Bellido
Collaboration: Piero Best, Maria Camarena, Alonso Stephen Hernández and Adrian Paredes
email: pulsobursatil@ulima.edu.pe
facebook: www.facebook.com/pulsobursatil.ul