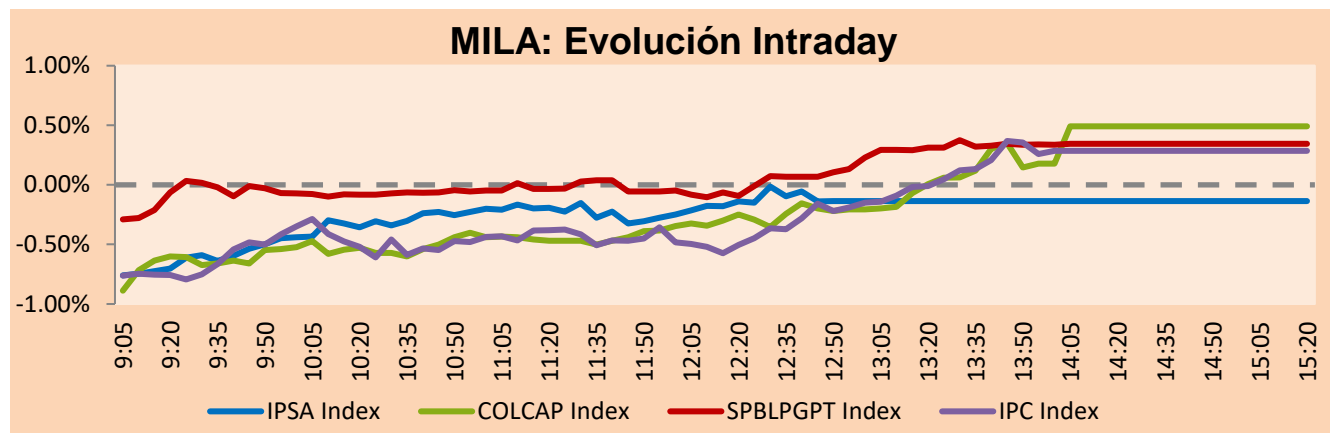


MILA

Lima, March 30, 2021

Main Indexes	Close	1 D	5 D	1 M	YTD	Cap. Burs. (US\$ bill)
▲ IPSA (Chile)	4,928.15	0.23%	2.61%	3.50%	16.95%	133.83
▲ IGPA (Chile)	24,801.89	0.15%	2.49%	3.52%	17.32%	160.43
COLSC (Colombia)	1,045.86	0.00%	-0.27%	-0.81%	-1.02%	5.28
▲ COLCAP (Colombia)	1,327.32	0.49%	0.57%	-2.87%	-8.42%	77.79
▲ S&P/BVL (Perú)*	21,478.65	0.34%	-0.23%	-5.23%	2.64%	105.11
▲ S&P/BVL SEL (Perú)	575.15	0.52%	0.55%	-4.93%	3.49%	93.02
▲ S&P/BVL LIMA 25	28,877.45	0.27%	0.28%	-2.27%	14.28%	104.13
▲ IPC (México)	47,905.00	0.33%	2.67%	5.50%	7.21%	295.34
▲ S&P MILA 40	543.13	0.48%	0.14%	0.26%	2.20%	6,079.04

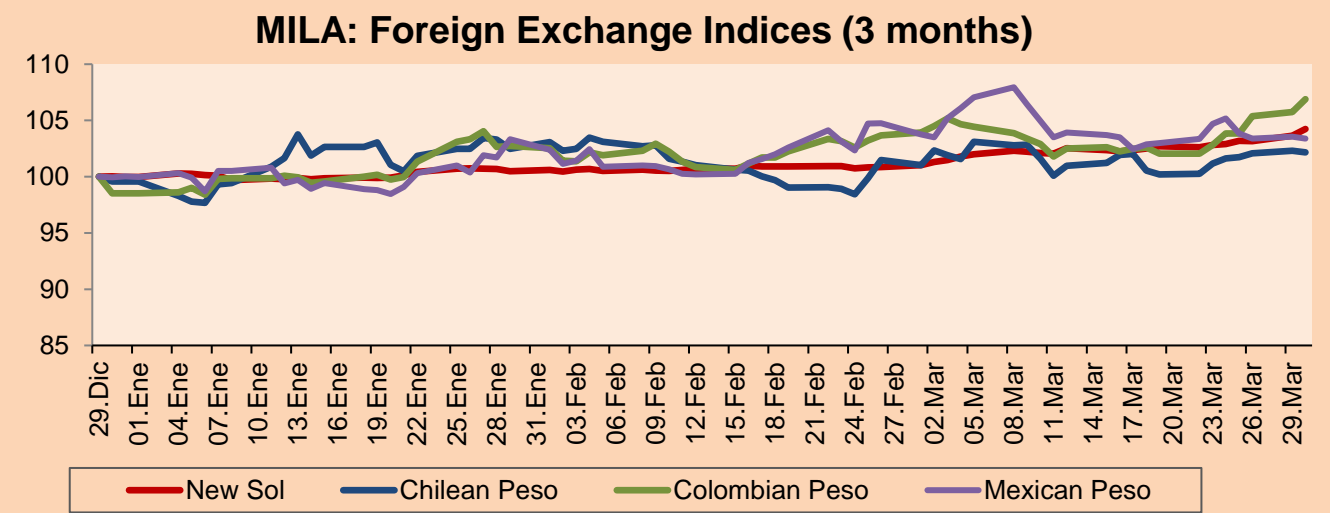
*Legend: Variation 1D: 1 day; 5D: 5 days; 1M: 1 Month; YTD: Var% 12/31/20 to date



Source: Bloomberg

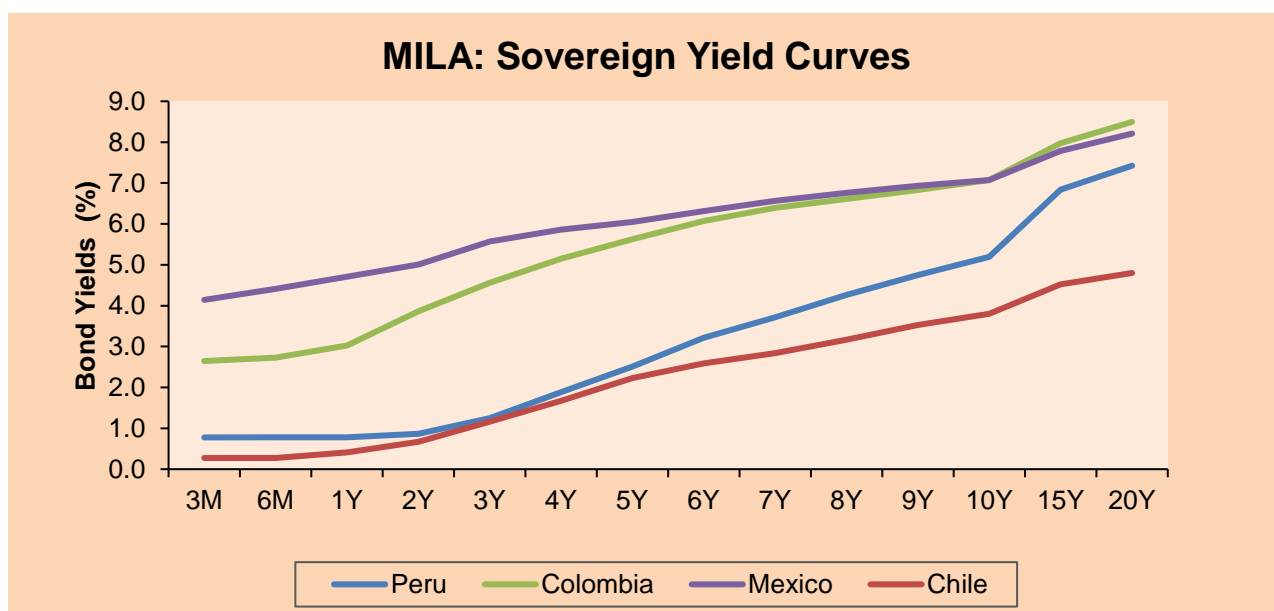
Currency	Price	1D*	5D*	30 D*	YTD*
▲ New Sol (PEN)	3,772.00	0.58%	1.38%	3.38%	4.26%
▼ Chilean Peso (CLP)	730.22	-0.15%	0.97%	0.67%	2.59%
▲ Colombian Peso (COP)	3,720.43	1.08%	3.95%	3.11%	8.48%
▼ Mexican Peso (MXN)	20.58	-0.18%	-1.27%	-1.31%	3.36%

*Legend: Variation 1D: 1 day; 5D: 5 days; 1M: 1 Month; YTD: Var% 12/31/20 to date



Base: 29/12/20=100
Source: Bloomberg

Fixed Income	Currency	Price	Bid Yield (%)	Ask Yield (%)	Duration
PERU 7.35 07/21/25	USD	124.01	1.62	1.50	3.78
PERU 4.125 08/25/27	USD	111.914	2.17	2.08	5.74
PERU 8.75 11/21/33	USD	155.823	3.35	3.27	8.71
PERU 6.55 03/14/37	USD	135.72	3.61	3.57	10.55
PERU 5.625 11/18/2050	USD	132.782	3.80	3.75	16.34
CHILE 2.25 10/30/22	USD	102.684	0.67	0.42	1.54
CHILE 3.125 01/21/26	USD	107.756	1.50	1.40	4.50
CHILE 3.625 10/30/42	USD	104.811	3.33	3.30	15.30
COLOM 11.85 03/09/28	USD	157.706	2.80	2.57	5.33
COLOM 10.375 01/28/33	USD	151.106	4.80	4.59	7.85
COLOM 7.375 09/18/37	USD	131.872	4.64	4.55	10.61
COLOM 6.125 01/18/41	USD	118.399	4.72	4.66	12.26
MEX 4 10/02/23	USD	118.399	4.715	4.661	12.26
MEX5.55 01/45	USD	115.358	4.52	4.47	14.02



Source: Bloomberg

Equity

Largest gains	Exchange	Currency	Price	▲%	Largest losses	Exchange	Currency	Price	▼%
CEMEX SAB-CPO	Mexico	MXN	14.90	6.96	GRUPO BIMBO-A	Mexico	MXN	42.89	-3.01
FERREYCORP SAA	Peru	PEN	2.25	3.69	GRUPO TELEV-CPO	Mexico	MXN	38.25	-2.62
ISA SA	Colombia	COP	22960.00	3.42	INDUSTRIAS PENOL	Mexico	MXN	263.07	-2.56
PARQUE ARAUCO	Chile	CLP	1385.00	2.49	CERVEZAS	Chile	CLP	6455	-2.43
GRUPO ARGOS SA	Colombia	COP	11850.00	2.24	BANCO CRED INVER	Chile	CLP	37600	-2.31

Per Turnover	Exchange	Amount (US\$)	Per Volume	Exchange	Volume
WALMART DE MEXIC	Mexico	32,863,144	BANCO SANTANDER	Chile	368,102,680
CEMEX SAB-CPO	Mexico	30,187,286	ITAU CORPBANCA	Chile	224,187,997
COLBUN SA	Chile	30,074,498	COLBUN SA	Chile	152,704,508
AMERICA MOVIL-L	Mexico	24,587,830	ENEL AMERICAS SA	Chile	121,295,339
BANCO SANTANDER	Chile	22,634,275	ENEL CHILE SA	Chile	83,117,326

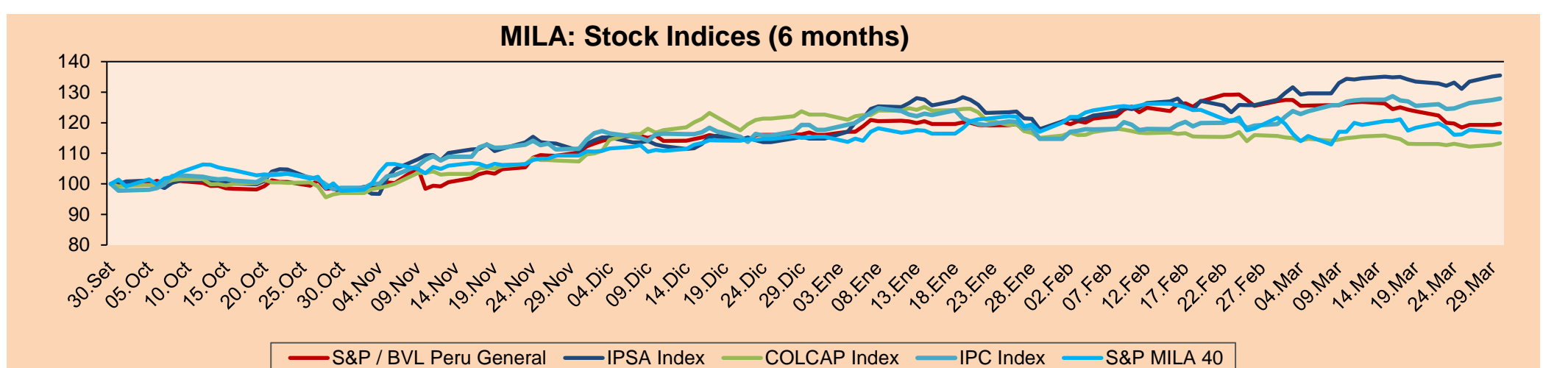
MILA

Peru: The BVL General Index ended today's session with a negative result of -0.50%. The index maintains a positive annual cumulative trend of +2.64% in local currency, while the dollar-adjusted performance amounted to -0.80%. Then, the S&P / BVL Peru SEL varied by -0.78% while the S&P / BVL LIMA 25 by -0.28%. The spot PEN reached S/3.7435. Headline: Peru warned that it is in "the highest part" of the second wave of COVID-19.

Chile: The IPSA index ended the day with a positive return of +0.23%. The best performing stocks were Mallplaza (+2.73%) and Parque Arauco (+2.49%). Headline: Santiago Stock Exchange closes slightly higher for third consecutive day of gains.

Colombia: The COLCAP index closed today with a positive return of +0.49%. The most benefited sectors of the day were Energy. The best performing stocks were Interconexión Eléctrica (+2.59%) and Grupo Aval (+2.59%). Headline: ExxonMobil receives authorization for its fracking pilot project in Colombia.

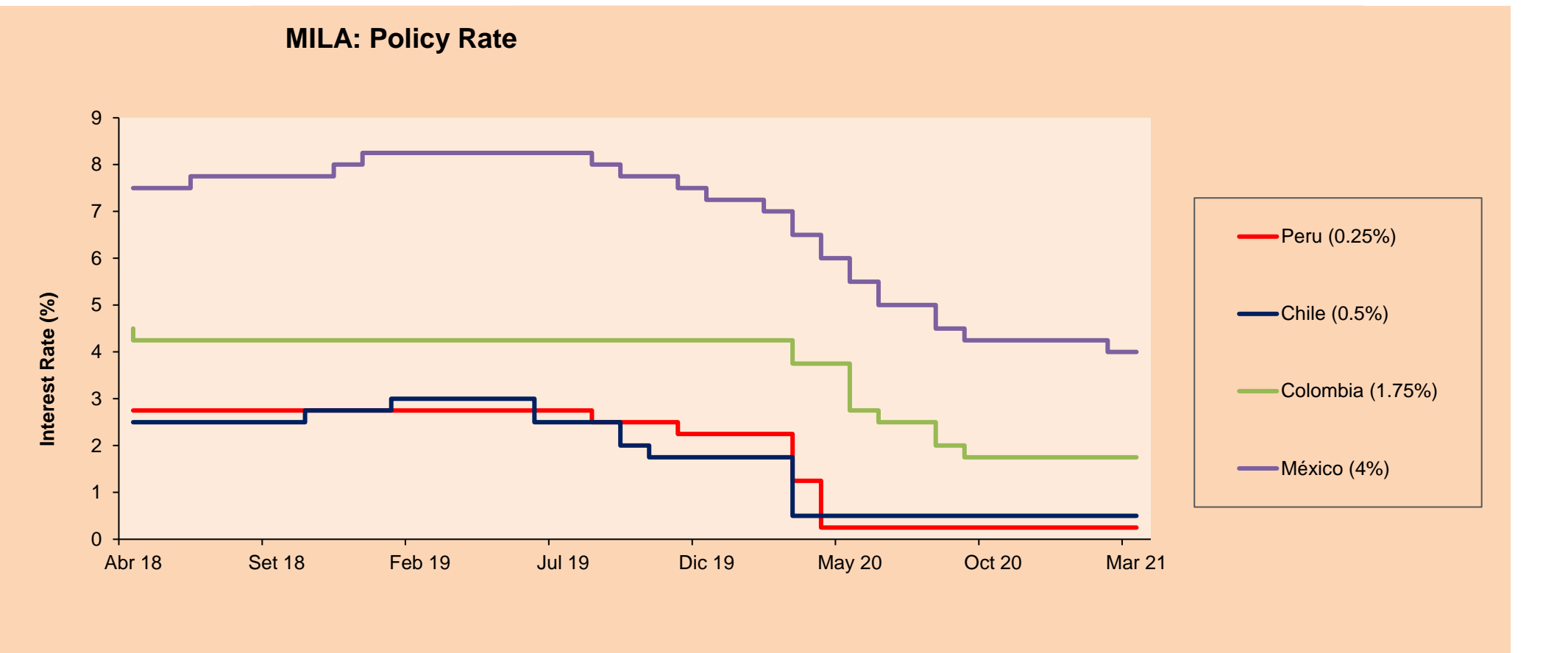
Mexico: The IPC index closed the day with a positive return of +0.78%. The sectors that benefited the most during the day were Industrials (+1.73%) and Financials (+1.17%). The best performing stocks were Banco Regional RA (+5.39%) and Telesites (+5.21%). Headline: Mexico's coronavirus death toll could actually be 70% higher.



Base: 01/10/20=100
Source: Bloomberg

ETFs

ETFs	Curr.	Close	1D	5D	30 D	YTD	Exchange
▲ iShares MSCI All Peru Caped Index Fund	USD	34	0.56%	-0.67%	-8.28%	-1.96%	NYSE Arca
▲ iShares MSCI All Chile Caped Index Fund	USD	33.885	0.85%	1.67%	7.88%	12.16%	Cboe BZX
▼ Global X MSCI Colombia	USD	10.05	-0.10%	-1.60%	0.00%	-11.53%	NYSE Arca
▲ iShares MSCI Mexico Capped	USD	44.26	0.16%	3.19%	8.85%	2.95%	NYSE Arca
▲ iShares MSCI Emerging Markets	USD	53.07	0.32%	0.34%	-1.23%	2.71%	NYSE Arca
▲ Vanguard FTSE Emerging Markets	USD	51.82	0.41%	0.10%	-1.28%	3.41%	NYSE Arca
▲ iShares Core MSCI Emerging Markets	USD	64.07	0.38%	0.36%	-1.02%	3.27%	NYSE Arca
▲ iShares JP Morgan Emerging Markets Bonds	USD	62.84	0.43%	1.13%	0.88%	2.88%	Cboe BZX
▼ Morgan Stanley Emerging Markets Domestic	USD	5.9	-1.67%	-1.34%	-1.34%	-6.20%	New York

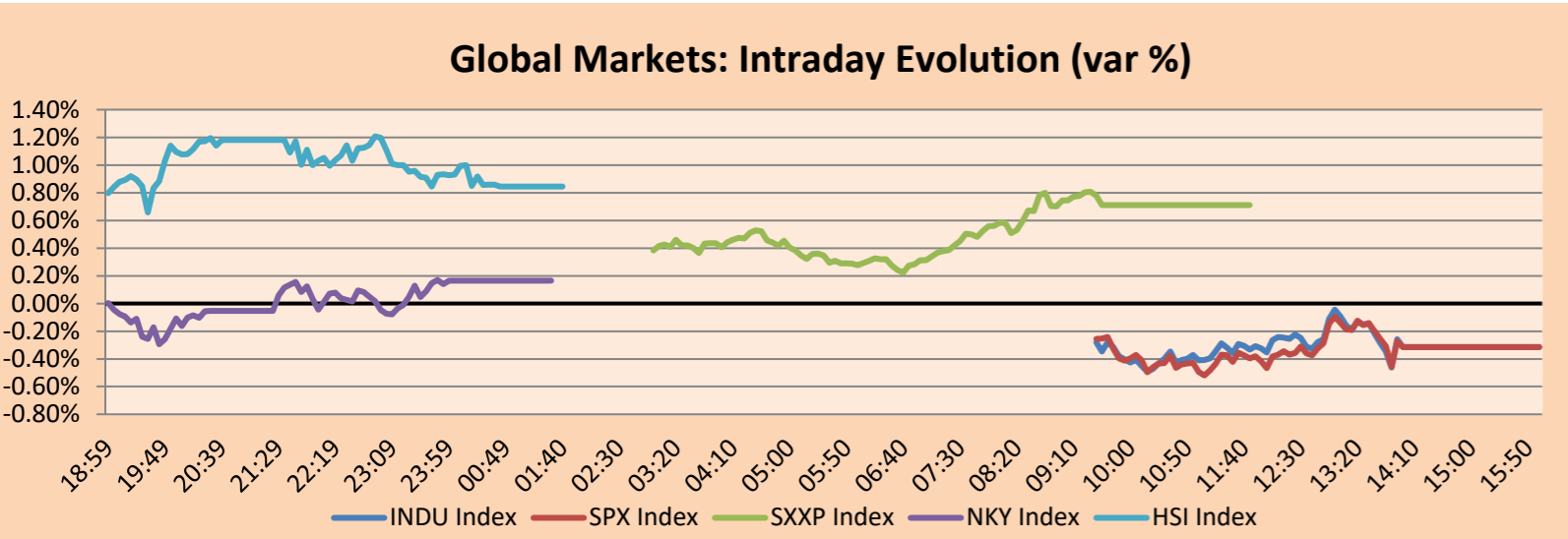


Source: Bloomberg

WORLD

Main Indices	Close	1 D*	5 D*	1 M*	YTD*	Market Cap. (US\$ Mill.)
▼ Dow Jones (USA)	33,066.96	-0.31%	1.99%	5.61%	8.32%	9,941,060
▼ Standard & Poor's 500 (EEUU)	3,958.55	-0.32%	1.23%	3.86%	7.02%	35,545,152
▼ NASDAQ Composite (USA)	13,045.39	-0.11%	-1.38%	0.91%	4.59%	22,077,585
▲ Stoxx EUROPE 600 (Europe)	430.65	0.71%	1.73%	4.60%	8.32%	10,141,948
▲ DAX (Germany)	15,008.61	1.29%	2.36%	7.60%	10.12%	1,174,080
▲ FTSE 100 (United Kingdom)	6,772.12	0.53%	1.09%	1.87%	4.28%	1,419,332
▲ CAC 40 (France)	6,088.04	1.21%	2.40%	5.05%	9.94%	1,698,707
▲ IBEX 35 (Spain)	8,595.20	1.21%	2.44%	2.65%	6.24%	487,513
▼ MSCI AC Asia Pacific Index	205.02	-0.06%	-0.62%	0.23%	3.28%	26,179,113
▲ HANG SENG (Hong kong)	28,577.50	0.84%	0.28%	-0.54%	6.27%	4,415,579
▲ SHANGHAI SE Comp. (China)	3,456.68	0.62%	1.32%	-0.50%	0.33%	6,538,562
▲ NIKKEI 225 (Japan)	29,432.70	0.16%	1.51%	3.43%	8.78%	3,993,961
▼ S&P / ASX 200 (Australia)	6,738.45	-0.90%	-0.10%	0.98%	3.67%	1,655,138
▲ KOSPI (South Korea)	3,070.00	0.33%	2.67%	2.86%	8.33%	1,848,379

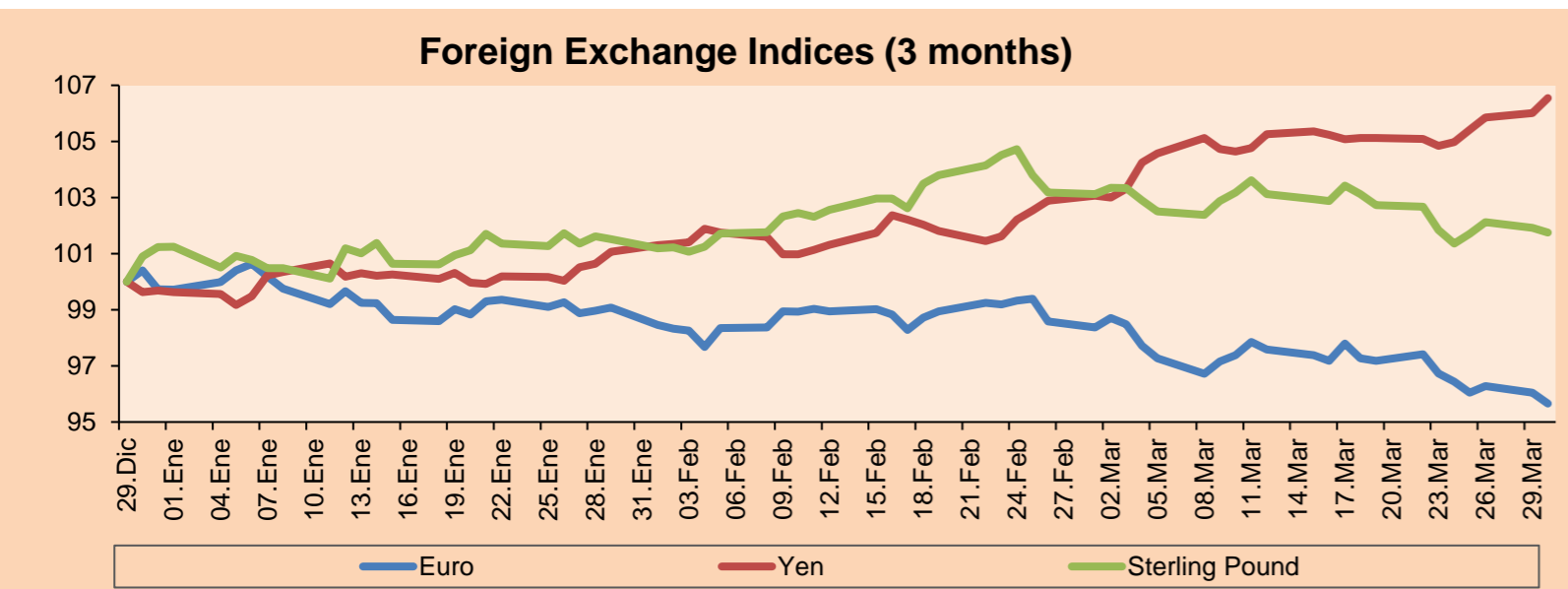
*Legend: Variation 1D: 1 Day; 5D: 5 Days; 1M: 1 Month; YTD: Var.% 12/31/20 to date



Source: Bloomberg

Currency	Price	1 D*	5 D*	1 M*	YTD*
▼ Euro	1,171.7	-0.41%	-1.11%	-2.96%	-4.08%
▲ Yen	110.3600	0.50%	1.63%	3.56%	6.89%
▼ Sterling Pound	1,374.0	-0.16%	-0.09%	-1.39%	0.51%
▲ Yuan	6,571.8	0.03%	0.85%	1.43%	0.68%
▲ Hong Kong Dollar	7,774.9	0.02%	0.10%	0.24%	0.28%
▼ Brazilian Real	5,774.5	-0.15%	4.54%	3.06%	11.08%
▲ Argentine Peso	91,955.7	0.04%	0.35%	2.37%	9.28%

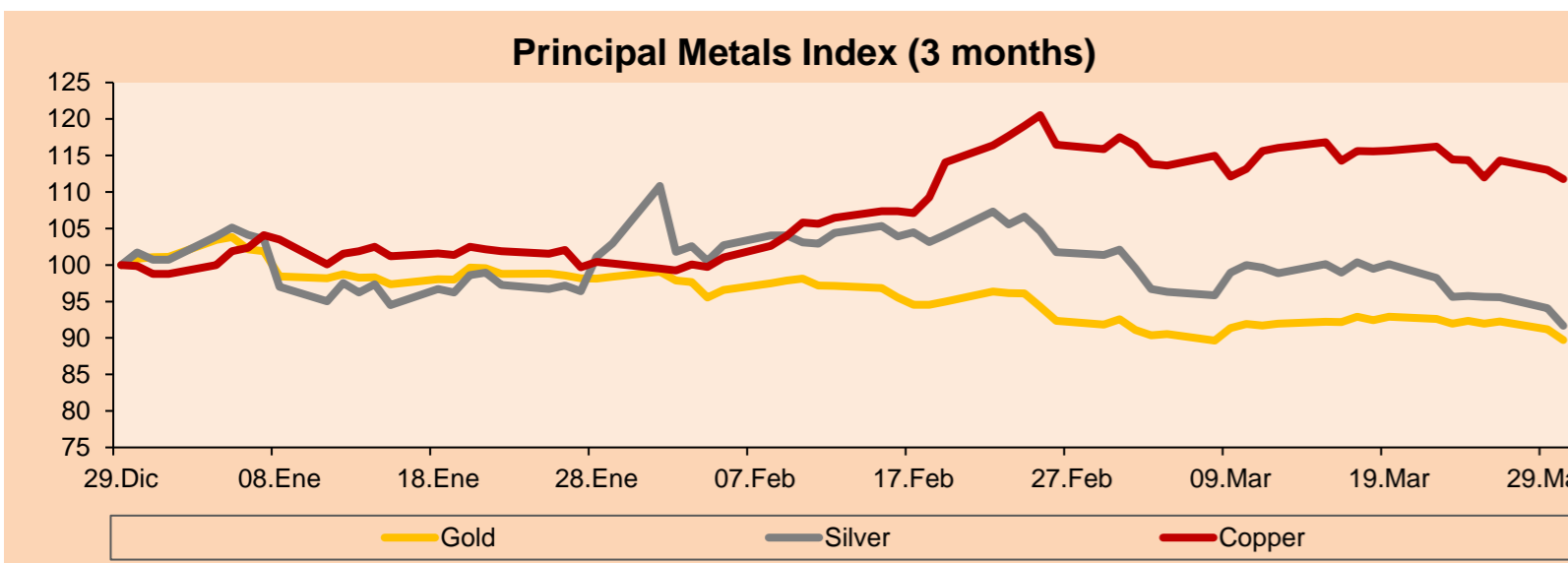
*Legend: Variation 1D: 1 Day; 5D: 5 Days; 1M: 1 Month; YTD: Var.% 12/31/20 to date



Base: 29/12/20=100
Source: Bloomberg

Commodities	Close	1 D*	5 D*	1 M*	YTD*
▼ Oro (US\$ Oz. T) (LME)	1,685.20	-1.58%	-2.42%	-2.82%	-11.23%
▼ Plata (US\$ Oz. T) (LME)	24.03	-2.54%	-4.12%	-9.89%	-8.99%
▼ Cobre (US\$ TM) (LME)	8,770.25	-1.08%	-2.32%	-4.04%	13.18%
▼ Zinc (US\$ TM) (LME)	2,797.25	-0.65%	-0.99%	0.78%	2.49%
▼ Petróleo WTI (US\$ Barril) (NYM)	60.55	-1.64%	4.83%	-1.11%	24.36%
▼ Estaño (US\$ TM) (LME)	26,810.00	-2.22%	-3.06%	1.02%	30.50%
▲ Plomo (US\$ TM) (LME)	1,946.75	0.80%	1.34%	-4.51%	-1.47%
- Azúcar #11 (US\$ Libra) (NYB-ICE)	14.92	0.00%	-3.31%	-9.30%	1.63%
▼ Cacao (US\$ TM) (NYB-ICE)	2,384.00	-3.13%	-3.25%	-8.10%	-5.06%
▼ Café Arábica (US\$ TM) (NYB-ICE)	122.60	-3.50%	-3.92%	-10.84%	-5.80%

*Leyenda: Variación 1D: 1 Día; 5D: 5 Días; 1M: 1 Mes; YTD: Var.% 31/12/20 a la fecha



Base: 29/12/20=100
Source: Bloomberg

Equity

Germany (Stocks from DAX Index)

Largest gains	Curr.	Price	▲ %	Exchange	Largest losses	Curr.	Price	▼ %	Exchange
BMW GY	EUR	88.8	3.74	Xetra	RWE GY	EUR	32.4	-0.95	Xetra
1COV GY	EUR	58.2	3.12	Xetra	HEN3 GY	EUR	96.18	-0.95	Xetra
DAI GY	EUR	75.94	3.03	Xetra	SAP GY	EUR	103.56	-0.71	Xetra
BAS GY	EUR	71.88	2.64	Xetra	EOAN GY	EUR	9.758	-0.37	Xetra

Europe (Stocks from STOXX EUROPE 600)

Largest gains	Curr.	Price	▲ %	Exchange	Largest losses	Curr.	Price	▼ %	Exchange
SAB SQ	EUR	0.4744	5.45	Soc.Bol SIBE	GN DC	DKK	494	-3.21	Copenhagen
EVT GY	EUR	30.9	5.32	Xetra	ADE NO	NOK	126.9	-3.20	Oslo
VCT LN	GBp	2240	5.16	Londres	INPST NA	EUR	14.236	-3.12	EN Amsterdam
IAG LN	GBp	202	5.10	Londres	CSGN SE	CHF	10.415	-3.07	SIX Swiss Ex

Global Overview:

United States:

Major U.S. indexes closed negative after U.S. Treasury yields raised interest rates. Major U.S. indexes closed lower after the 10-year bond hit a 14-month high of 1.77%. On the day, large bank stocks recovered some declines from earlier this week as lenders assessed losses they will incur after hedge fund Archegos Capital defaulted on major margin calls. Investors are keeping an eye on President Joe Biden's public speech this Wednesday. It is expected to include details on the launch of his infrastructure plan for the country. As mentioned last week, this infrastructure plan would comprise nearly \$3 trillion worth and would be aimed at restoring roads and bridges, and in turn curbing climate change. Meanwhile, Bitcoin is approaching \$60,000, thanks to companies such as Paypal, Visa and Dapper Labs embracing crypto assets as a measure of payments. In the stock market, losses were led by Amgen -2.04%, Merck -1.71% and Procter & Gamble -1.54%. Thus, the DOW JONES -0.31%, S&P 500 -0.32% and NASDAQ -0.11% closed the day with losses.

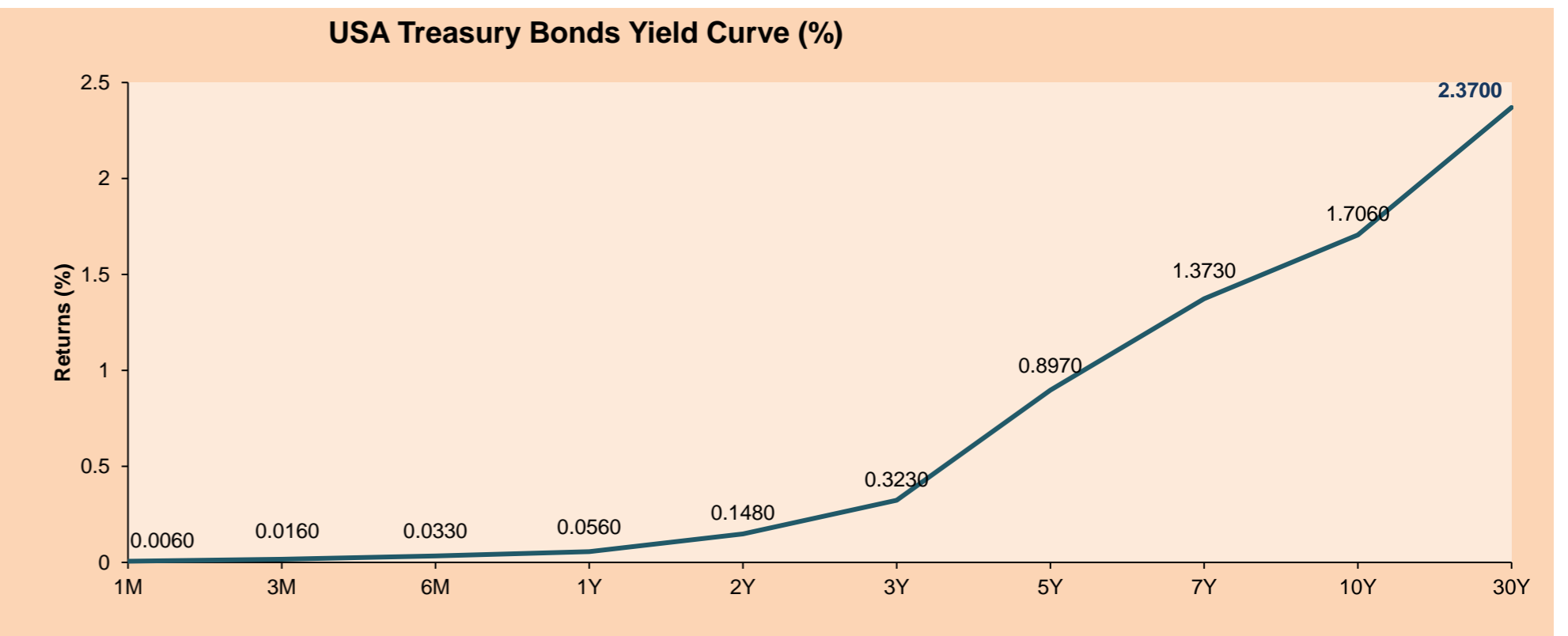
Europe:

European markets closed today with favorable results after hopes for an early vaccine-driven economic recovery increased. The pan-European index closed higher and nearing all-time highs, after US and European government bond yields managed to reverse Monday's drop in bank stocks. On the macroeconomic data front, eurozone sentiment jumped much more than expected during March, from 93.4 in February to 101 points. With this, the STOXX 600 is close to closing the first quarter with gains of close to 8%. In France, the CAC 40 closed higher after recent consumer confidence data showed unexpected increases despite the containment measures. In Germany, DAX is close to climb to a new record high, driven mainly by automakers and Deutsche Bank's upbeat results +1.56%. In equities, Credit Suisse Group -3.07% continued to accumulate weekly losses, while Victrex +5.16%, after Citigroup raised its price target. Thus, the STOXX 600 +0.71%, CAC 40 +1.21%, FTSE 100 +0.53% and DAX +1.29% closed with highly positive performances.

Asia:

Asian markets ended today's session with mixed results, of which China had an increase in CSI300 + 1.11%, driven by Chinese electric vehicle manufacturer BYD Co Ltd, which is backed by billionaire Warren Buffett, which reported the Monday a 162% growth in 2020 net profit as it became a major mask maker amid the COVID-19 pandemic. For now, it's more of a rebound after recent market corrections, analysts at Huaxi Securities said in a report, adding that cyclical top-tier firms with low valuations and good cash conditions are relatively safe for investors. Nonetheless, analysts said market sentiment remained weak and investors should not have too much hope that the rally would be sustainable. Tensions between China and the US and expectations of tightening liquidity had curbed risk appetite in the equity market, while US Treasury yields could rise to about 2% in the future, which would limit the market rally. Thus, the Shanghai Composite + 0.60%, Shenzhen -1.12%, Hang Seng -1.34%, Nikkei -0.78%, S & P / ASX 200 -0.90% and Kospi Composite + 1.12% closed various returns, among other indices.

ETFs	Curr.	Close	1D	5D	30 D	YTD	Exchange
SPDR S&P 500 ETF TRUST	USD	394.73	-0.27%	1.34%	3.78%	5.58%	NYSE Arca
ISHARES MSCI EMERGING MARKET	USD	53.07	0.32%	0.34%	-1.23%	2.71%	NYSE Arca
ISHARES IBOXX HIGH YLD CORP	USD	86.76	-0.24%	0.35%	0.37%	-0.62%	NYSE Arca
FINANCIAL SELECT SECTOR SPDR	USD	34.31	0.70%	3.47%	6.19%	16.38%	NYSE Arca
VANECK GOLD MINERS	USD	31.83	-3.13%	-2.48%	2.25%	-11.63%	NYSE Arca
ISHARES RUSSELL 2000 ETF	USD	218.01	1.68%	0.44%	-0.14%	11.20%	NYSE Arca
SPDR GOLD SHARES	USD	157.57	-1.71%	-2.62%	-2.62%	-11.66%	NYSE Arca
ISHARES 20+ YEAR TREASURY BO	USD	136.21	0.52%	-0.93%	-4.83%	-13.64%	NASDAQ GM
INVESTCO QQQ TRUST SERIES 1	USD	314.32	-0.50%	-0.91%	0.06%	0.18%	NASDAQ GM
ISHARES NASDAQ BIOTECHNOLOGY	USD	146.68	-0.39%	-3.26%	-6.53%	-3.18%	NASDAQ GM
ENERGY SELECT SECTOR SPDR	USD	49.40	-0.86%	3.28%	2.60%	30.34%	NYSE Arca
PROSHARES ULTRA VIX ST FUTUR	USD	5.71	-6.55%	-12.15%	-40.15%	-46.38%	Cboe BZX
UNITED STATES OIL FUND LP	USD	41.17	-1.79%	4.57%	-0.34%	24.72%	NYSE Arca
ISHARES MSCI BRAZIL ETF	USD	32.79	1.30%	-1.26%	2.79%	-11.55%	NYSE Arca
SPDR S&P OIL & GAS EXP & PR	USD	80.75	-0.16%	3.14%	0.30%	38.03%	NYSE Arca
UTILITIES SELECT SECTOR SPDR	USD	63.57	-0.90%	1.60%	8.93%	1.39%	NYSE Arca
ISHARES US REAL ESTATE ETF	USD	92.32	-0.08%	1.62%	5.69%	7.79%	NYSE Arca
SPDR S&P BIOTECH ETF	USD	130.11	0.58%	-6.08%	-12.09%	-7.58%	NYSE Arca
ISHARES IBOXX INVESTMENT GRA	USD	129.71	0.31%	0.19%	-1.94%	-6.10%	NYSE Arca
ISHARES JP MORGAN USD EMERGI	USD	108.74	0.05%	-0.37%	-1.17%	-6.19%	NASDAQ GM
REAL ESTATE SELECT SECT SPDR	USD	39.65	-0.43%	2.19%	6.19%	8.45%	NYSE Arca
ISHARES CHINA LARGE-CAP ETF	USD	46.61	0.41%	-0.49%	-5.01%	0.39%	NYSE Arca
CONSUMER STAPLES SPDR	USD	68.53	-1.07%	2.28%	8.26%	1.60%	NYSE Arca
VANECK JR GOLD MINERS	USD	43.55	-4.43%	-4.89%	-4.83%	-19.71%	NYSE Arca
SPDR BBG BARC HIGH YIELD BND	USD	108.38	-0.21%	0.44%	0.20%	-0.51%	NYSE Arca
VANGUARD REAL ESTATE ETF	USD	92.42	0.13%	1.56%	5.18%	8.82%	NYSE Arca
GRAYSCALE BITCOIN TRUST BTC	USD	50.82	2.77%	8.71%	17.64%	58.81%	OTC US



Source: Bloomberg

LIMA

Stocks

Ticker	Currency	Price	1D*	5D*	30D*	YTD*	Frequency	Volume (US\$)	Beta	Dividend Yield (%)	Price Earning	Market Cap. (M US\$)	Economic Sector*	Index Weight
▲ ALICORC1 PE**	S/.	7.70	0.22%	0.18%	-0.81%	-1.02%	100.00%	2,069,394	0.68	3.25	19.97	1,741.37	Industrial	3.53%
▲ ATACOB1 PE**	S/.	0.15	0.00%	-4.52%	-12.43%	7.25%	70.00%	3,378	1.09	0.00	-	37.07	Mining	1.02%
▲ BACKUS1 PE**	S/.	22.25	0.23%	-1.51%	-4.09%	10.42%	95.00%	53,770	0.54	1.58	10.84	8,274.14	Industrial	0.82%
▲ BAP PE**	US\$	138.43	0.68%	-1.40%	-13.70%	-13.80%	100.00%	137,403	1.65	6.36	-	13,065.34	Diverse	5.82%
▼ BVN PE**	US\$	10.01	-2.05%	-4.67%	-9.08%	-16.58%	100.00%	98,626	1.16	0.00	-	2,759.10	Mining	5.88%
▼ CASAGRC1 PE**	S/.	5.95	-0.83%	0.85%	-2.46%	25.26%	80.00%	51,153	0.55	3.80	10.88	132.87	Agricultural	1.31%
▲ BBVAC1 PE**	S/.	2.43	0.41%	0.41%	-1.62%	11.98%	100.00%	155,623	0.66	3.55	25.33	4,206.23	Finance	2.85%
- CORAREI1 PE**	S/.	1.15	0.00%	1.77%	4.55%	29.21%	100.00%	43,409	0.57	6.07	6.98	405.85	Industrial	1.72%
▼ CPACASC1 PE**	S/.	5.85	-0.34%	-0.85%	-3.31%	10.38%	100.00%	162,631	0.59	3.93	41.79	708.63	Industrial	2.38%
▼ CVERDEC1 PE**	US\$	24.50	-2.00%	-5.41%	-5.77%	17.11%	100.00%	220,073	0.89	0.00	31.88	8,576.37	Mining	5.25%
- ENGEPEC1 PE**	S/.	2.60	0.00%	-0.76%	3.17%	30.00%	90.00%	203,396	0.50	8.46	15.89	1,956.72	Public Services	1.44%
- ENDISPC1**	S/.	6.05	0.00%	0.00%	2.54%	12.04%	60.00%	3,208	0.48	0.00	14.19	1,024.21	Public Services	0.98%
▲ FERREYC1 PE**	S/.	2.25	3.69%	-0.44%	7.14%	29.31%	100.00%	807,233	0.57	3.41	14.77	582.00	Diverse	4.90%
▲ AENZAC1 PE**	S/.	1.80	1.12%	7.14%	7.14%	3.45%	95.00%	3,033,195	0.80	0.00	-	416.08	Diverse	4.05%
▲ IFS PE**	US\$	29.40	1.38%	3.16%	-14.78%	-4.98%	100.00%	55,127	1.27	5.95	34.05	3,394.16	Diverse	7.22%
▼ INRETC1 PE**	US\$	42.60	-0.93%	-1.39%	-4.27%	8.67%	100.00%	407,751	0.64	1.32	53.78	4,379.59	Diverse	5.28%
▲ LUSURC1 PE**	S/.	14.20	1.43%	13.60%	-38.79%	-44.31%	95.00%	135,132	0.54	4.92	14.70	1,833.17	Public Services	1.81%
▲ MINSUR1 PE**	S/.	2.75	0.36%	-1.43%	-11.29%	48.65%	90.00%	135,768	0.79	0.00	72.56	2,101.87	Mining	3.09%
- PML PE**	US\$	0.15	0.00%	-3.23%	-6.25%	41.51%	65.00%	775	1.45	0.00	-	39.63	Mining	2.12%
▼ RELAPAC1 PE**	S/.	0.13	-3.05%	-3.05%	-2.31%	84.06%	95.00%	57,922	0.47	0.00	-	280.10	Industrial	2.12%
▲ SCCO PE**	US\$	68.15	0.19%	0.22%	-4.46%	3.41%	90.00%	13,170	0.96	2.49	31.85	52,684.94	Mining	2.14%
- SIDERC1 PE**	S/.	1.10	0.00%	10.00%	8.91%	29.41%	85.00%	28,990	0.80	25.17	12.95	358.09	Industrial	1.43%
- TV PE**	US\$	0.15	0.00%	2.04%	-4.46%	2.04%	95.00%	26,250	1.47	0.00	-	148.36	Mining	2.93%
▲ UNACEMC1 PE**	S/.	1.70	2.41%	-5.56%	-7.61%	9.68%	95.00%	296,632	0.81	0.76	37.68	819.41	Industrial	3.00%
▼ VOLCABC1 PE**	S/.	0.85	-2.30%	6.25%	10.39%	63.46%	100.00%	730,286	0.87	0.00	-	918.63	Mining	5.90%
- NEXAPEC1 PE**	S/.	3.40	0.00%	-5.56%	-13.92%	20.14%	80.00%	139	1.12	0.00	-	1,192.03	Mining	1.56%

Quantity of shares: 26

Source: Bloomberg, Economática

* Bloomberg Industry Classification System

** PER is used in the stock market and original currency of the instrument

*Legend: Variation 1D: 1 Day; 5D: 5 Days; 1M: 1 Month; YTD: Var.% 12/31/20 to date

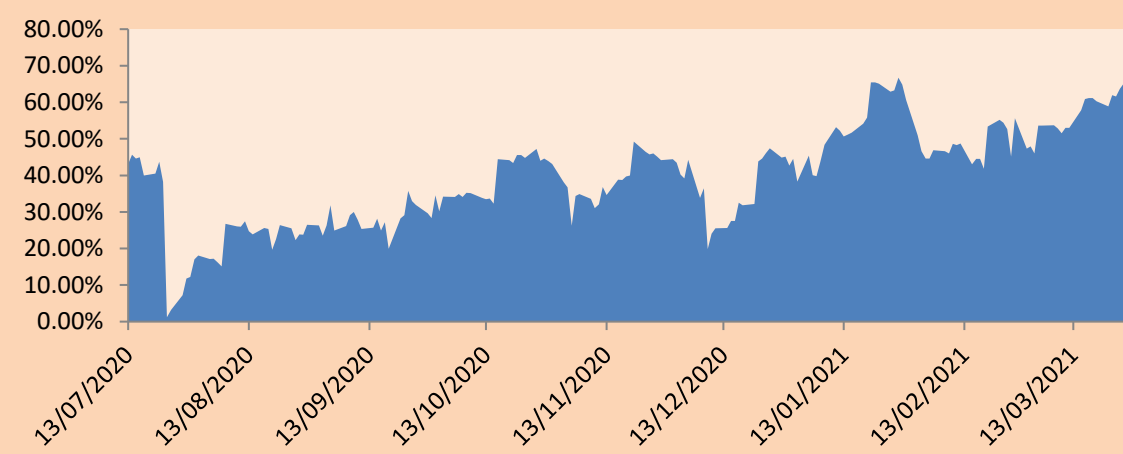
Sectorial Indices

	Close	1D*	5D*	30D*	YTD*	Beta
▼ S&P/BVLMining	416.18	-0.06%	0.12%	-2.63%	6.73%	0.94
▼ S&P/BVLConsumer	1,207.33	-0.28%	-1.16%	-2.99%	10.90%	0.41
▲ S&P/BVLIndustrials	220.66	1.74%	-0.47%	1.13%	15.80%	0.49
▲ S&P/BVLFinancials	946.48	1.30%	0.47%	-10.43%	-8.46%	1.77
▲ S&P/BVLConstruction	229.59	0.95%	-0.44%	-1.36%	9.79%	0.54
- S&P/BVLPublicSvcs	658.90	0.00%	0.84%	3.29%	7.30%	0.14
- S&P/BVLElectricUtil	643.25	0.00%	0.84%	3.29%	7.29%	0.14

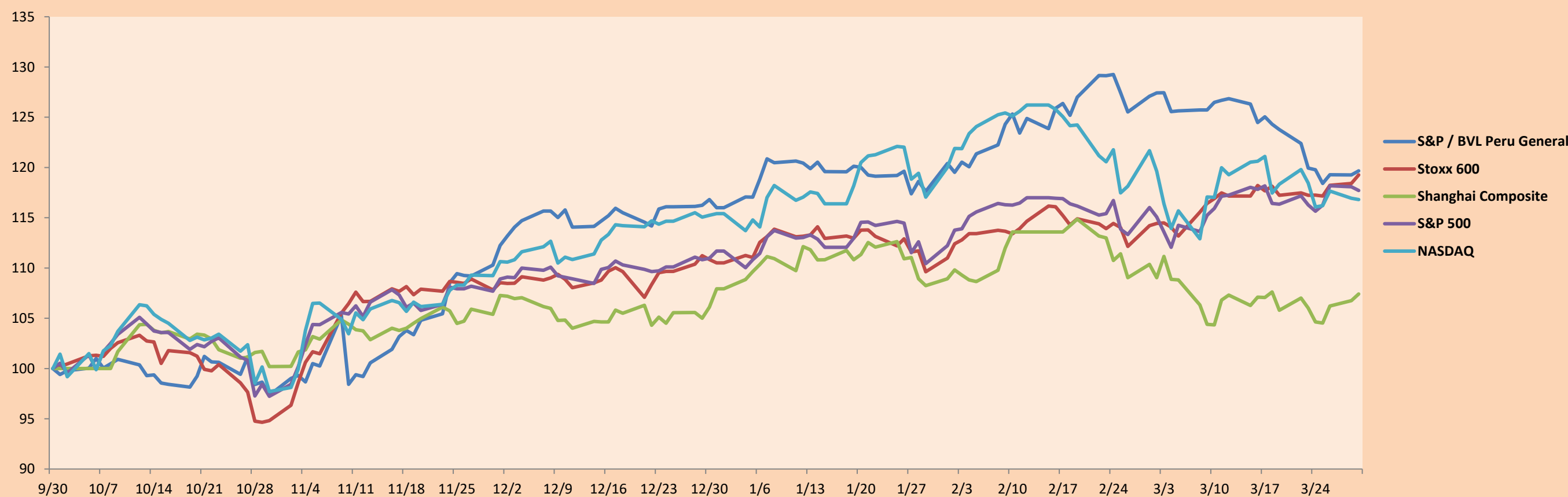
S&P/BVLConstructionTRPEN

*Legend: Variation 1D: 1 Day; 5D: 5 Days; 1M: 1 Month; YTD: Var.% 12/31/20 to date

Correlation Graph of Returns of Mining Index against Metallic Index of London (3 months)



Indices (6 months)



Base: 30/09/20=100
Source: Bloomberg

Capital Market Laboratory Coordinator: Economist Bruno Bellido
Collaboration: Piero Best, Maria Camarena, Alonso Stephen Hernández and Adrian Paredes
email: pulsobursatil@ulima.edu.pe
facebook: www.facebook.com/pulsobursatil.ul

SOVEREIGN RATING

RISK RATINGS

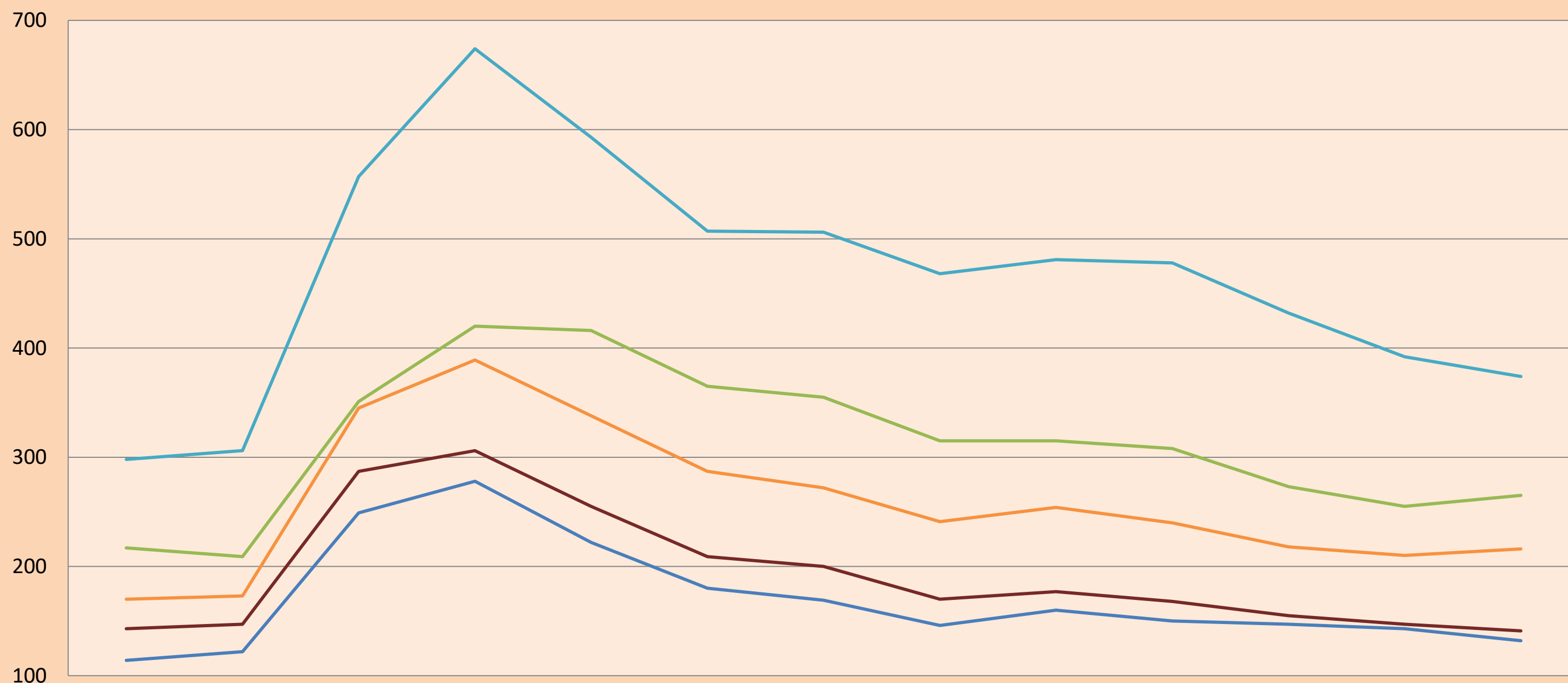
Moody's	S&P	Fitch	
Aaa	AAA	AAA	Prime
Aa1	AA+	AA+	High credit quality
Aa2	AA	AA	
Aa3	AA-	AA-	
A1	A+	A+	Medium-high grade, with low credit risk
A2	A	A	
A3	A-	A-	
Baa1	BBB+	BBB+	Moderate Credit Risk
Baa2	BBB	BBB	
Baa3	BBB-	BBB-	
Ba1	BB+	BB+	It has speculative elements and it is subject to substantial credit risk
Ba2	BB	BB	
Ba3	BB-	BB-	
B1	B+	B+	It is considered speculative and it has high credit risk
B2	B	B	
B3	B-	B-	
Caa1	CCC+	CCC	
Caa2	CCC	CCC	
Caa3	CCC-	CCC	
Ca	CC	CC	Very close to default or in default
C	C	CC	
C	D	DD	

Source: Bloomberg

Latin America Credit Rating			
Clasificadora de riesgo			
Country	Moody's	Fitch	S&P
Peru	A3	BBB+	BBB+
México	Ba2	BB-	BB-
Venezuela	C	WD	SD
Brazil	Ba2	BB-	BB-
Colombia	Baa2	BBB-	BBB-
Chile	A1	A-	A
Argentine	Ca	WD	CCC+
Panama	Baa2	BBB-	BBB

Source: Bloomberg

LATAM Country Risk (bps)



	Ene-20	Feb-20	Mar-20	Abr-20	May-20	Jun-20	Jul-20	Ago-20	Set-20	Oct-20	Nov-20	Dic-20	Ene-21
Perú	114	122	249	278	222	180	169	146	160	150	147	143	132
Brasil	217	209	351	420	416	365	355	315	315	308	273	255	265
México	298	306	557	674	593	507	506	468	481	478	432	392	374
Colombia	170	173	345	389	338	287	272	241	254	240	218	210	216
Chile	143	147	287	306	255	209	200	170	177	168	155	147	141

Source: BCRP

Capital Market Laboratory Coordinator: Economist Bruno Bellido
Collaboration: Piero Best, María Camarena, Alonso Stephen Hernández and Adrian Paredes
email: pulsobursatil@ulima.edu.pe
facebook: www.facebook.com/pulsobursatil.ul