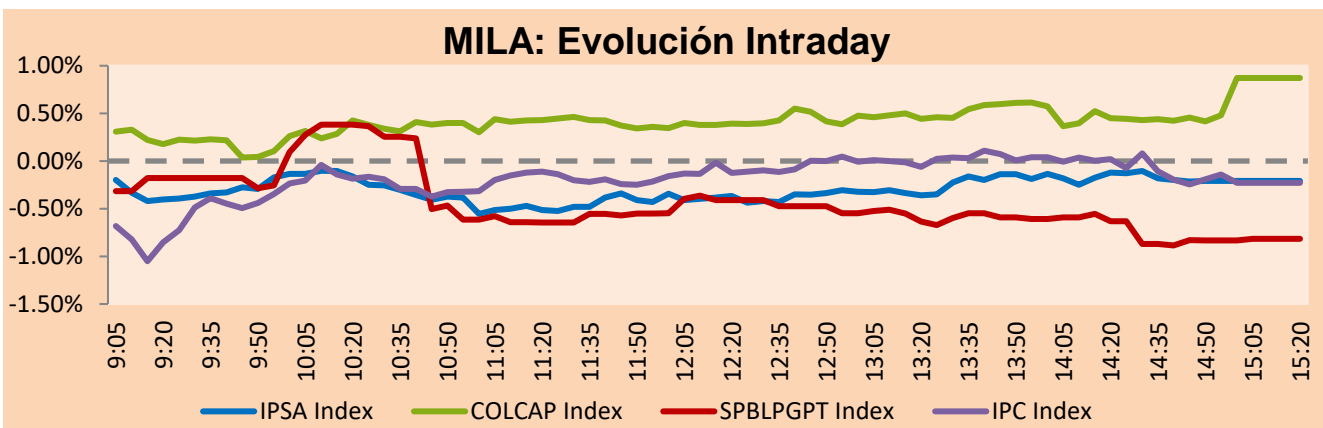


MILA

Lima, April 7, 2021

Main Indexes	Close	1 D	5 D	1 M	YTD	Cap. Burs. (US\$ bill)
▼ IPSA (Chile)	4,859.07	-0.03%	-1.40%	3.10%	16.32%	135.09
▼ IGPA (Chile)	24,539.96	-0.04%	-1.06%	3.17%	16.82%	162.69
▲ COLSC (Colombia)	1,042.39	0.19%	-0.33%	-0.84%	-1.57%	5.35
▲ COLCAP (Colombia)	1,335.89	0.87%	1.14%	-0.08%	-7.09%	79.48
▲ S&P/BVL (Perú)*	21,334.96	-0.82%	-0.33%	-5.45%	2.46%	109.89
▼ S&P/BVL SEL (Perú)	568.22	-0.37%	-0.69%	-5.11%	3.05%	96.91
▲ S&P/BVL LIMA 25	28,845.71	0.16%	0.16%	-2.09%	14.47%	108.86
▼ IPC (México)	47,897.84	-0.18%	0.32%	1.75%	8.69%	299.23
▲ S&P MILA 40	552.83	0.08%	1.79%	1.57%	3.40%	6,046.23

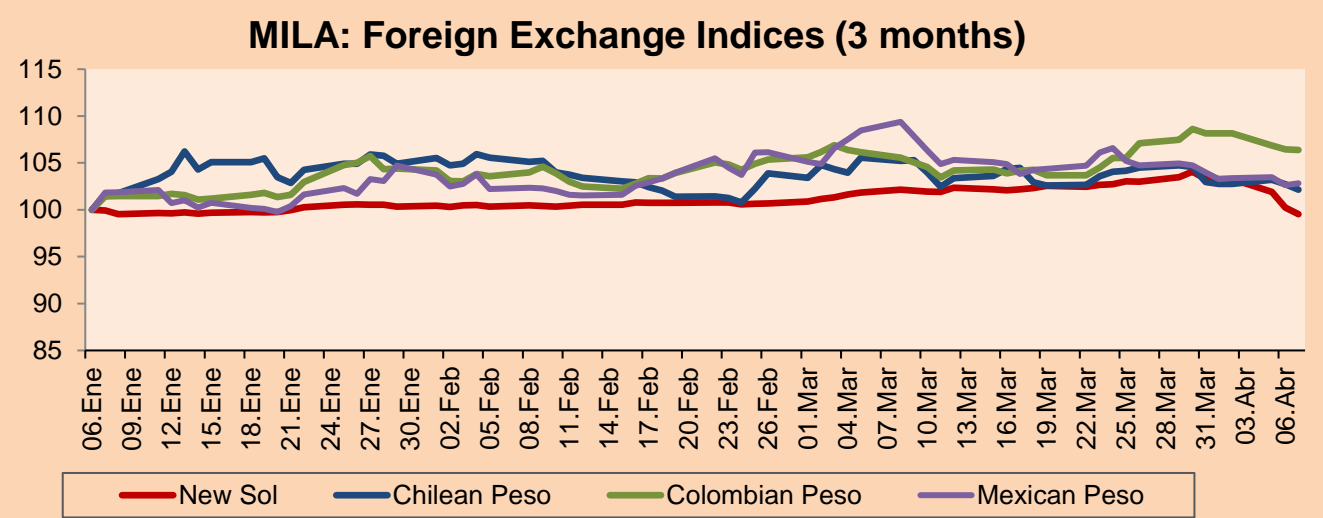
*Legend: Variation 1D: 1 day; 5D: 5 days; 1M: 1 Month; YTD: Var% 12/31/20 to date



Source: Bloomberg

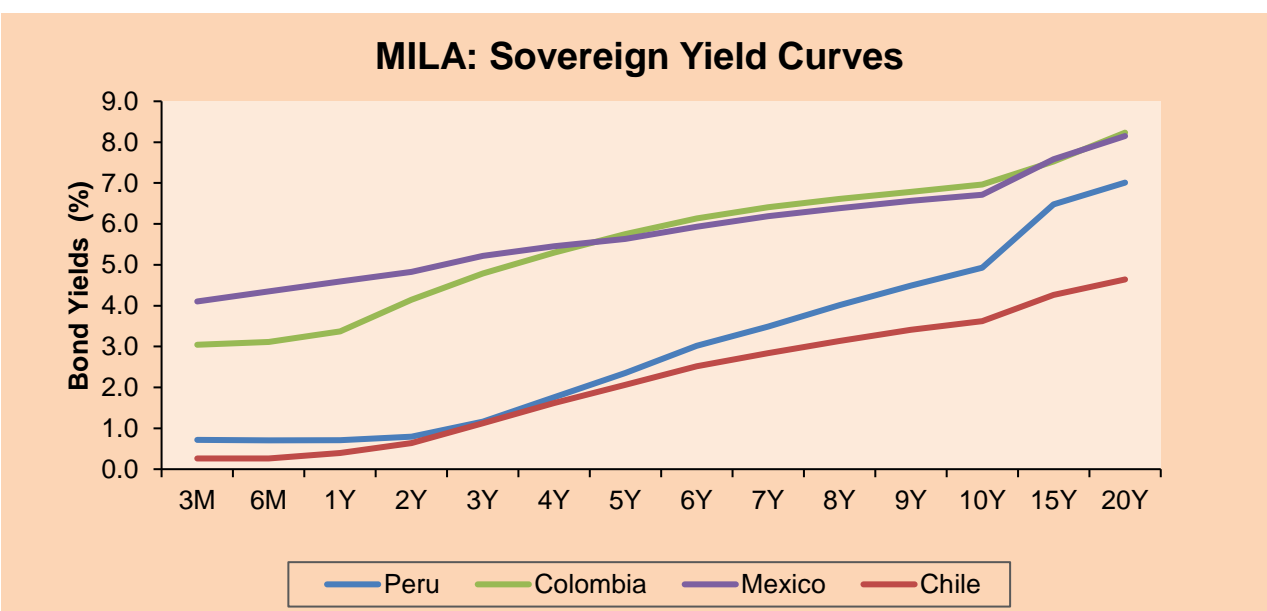
Currency	Price	1D*	5D*	30 D*	YTD*
▼ Sol (PEN)	3,6071	-0.73%	-3.64%	-2.57%	-0.30%
▼ Chilean Peso (CLP)	713.20	-0.56%	-0.81%	-2.93%	0.20%
▼ Colombian Peso (COP)	3,643.11	-0.08%	-1.65%	0.77%	6.22%
▲ Mexican Peso (MXN)	20.21	0.21%	-1.11%	-5.99%	1.47%

*Legend: Variation 1D: 1 day; 5D: 5 days; 1M: 1 Month; YTD: Var% 12/31/20 to date



Base: 06/01/21=100
Source: Bloomberg

Fixed Income	Currency	Price	Bid Yield (%)	Ask Yield (%)	Duration
PERU 7.35 07/21/25	USD	124.178	1.55	1.45	3.76
PERU 4.125 08/25/27	USD	112.296	2.10	2.02	5.72
PERU 8.75 11/21/33	USD	157.383	3.23	3.15	8.72
PERU 6.55 03/14/37	USD	137.193	3.51	3.46	10.57
PERU 5.625 11/18/2050	USD	135.312	3.68	3.64	16.52
CHILE 2.25 10/30/22	USD	102.741	0.59	0.37	1.52
CHILE 3.125 01/21/26	USD	108.168	1.40	1.31	4.48
CHILE 3.625 10/30/42	USD	106.08	3.24	3.22	15.35
COLOM 11.85 03/09/28	USD	158.421	2.69	2.46	5.31
COLOM 10.375 01/28/33	USD	153.85	4.56	4.36	7.86
COLOM 7.375 09/18/37	USD	133.993	4.48	4.40	10.67
COLOM 6.125 01/18/41	USD	120.557	4.56	4.51	12.37
MEX 4 10/02/23	USD	120.557	4.564	4.513	12.37
MEX5.55 01/45	USD	116.004	4.47	4.44	14.09



Source: Bloomberg

Equity

Largest gains	Exchange	Currency	Price	▲%	Largest losses	Exchange	Currency	Price	▼%
CENCOSUD SA	Peru	/A Authorizat	1550.00	2.89	SOQUIMICH-B	Peru	Authorizatio	37747	-2.66
GRUPO TELEV-CPO	Peru	/A Authorizat	39.61	2.88	ANDINA-PREF B	Peru	Authorizatio	1843	-2.26
FALABELLA SA	Peru	/A Authorizat	3300.00	2.48	WALMART DE MEXICO	Peru	Authorizatio	63.97	-1.75
VOLCAN CIA MIN-B	Peru	PEN	0.84	2.44	SOUTHERN COPPER	Peru	USD	71.2	-1.39
ECOPETROL	Colombia	COP	2337.00	2.10	FIBRA TERRA	Peru	Authorizatio	30.01	-1.35

Per Turnover	Exchange	Amount (US\$)	Per Volume	Exchange	Volume
AMERICA MOVIL-L	Mexico	40,296,924	BANCO SANTANDER	Peru	165,802,465
BANCO CRED INVER	Chile	8,935,136	ITAU CORPBANCA	Peru	139,274,267
AERO DEL SURES-B	Mexico	8,089,126	ENEL CHILE SA	Peru	84,054,027
ALFA SAB-A	Mexico	7,276,084	AMERICA MOVIL-L	Mexico	57,726,901
ARCA CONTINENTAL	Mexico	6,095,362	BANCO DE CHILE	Peru	54,600,839

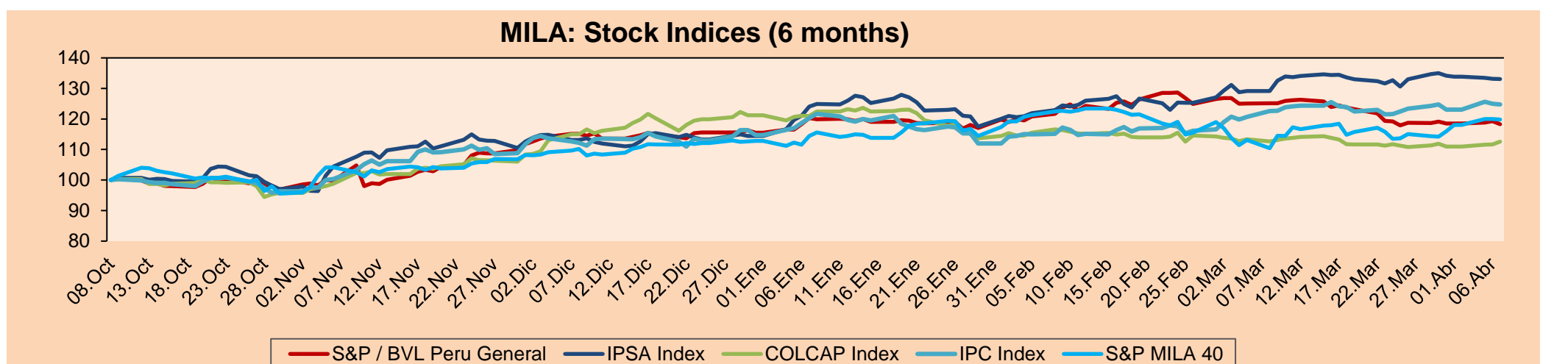
MILA

Peru: The General Index of the BVL ended today's session with a negative result of -0.82%. The index maintains an annual accumulated positive trend of + 2.46% in local, while the adjusted return in dollars amounts to + 2.77%. Then, the S&P / BVL Peru SEL varied by -0.37% while the S&P / BVL LIMA 25 by + 0.16%. The PEN spot reached S/3.6071. Headline: Peru's country risk fell one basis point and closed at 1.22 percentage points..

Chile: The IPSA index ended the day with a negative return of -0.03%. The worst performing stocks were Sociedad Química y Minera de Chile (-2.66%) and the bottling company Andina-Pref B (-2.26%). Headline: Landing of Melero at Work adds uncertainty to pension reform.

Colombia: The COLCAP index closed today with a positive return of + 0.87%. The sectors that benefited the most from the session were Energy (+ 1.92%) and Finance (+ 0.97%). The stocks with the best performance were Inversiones Argos SA (+ 2.51%) and Ecopetrol SA (+ 2.1%). Owner: Prodeco insists on the resignation of mining titles in Cesar.

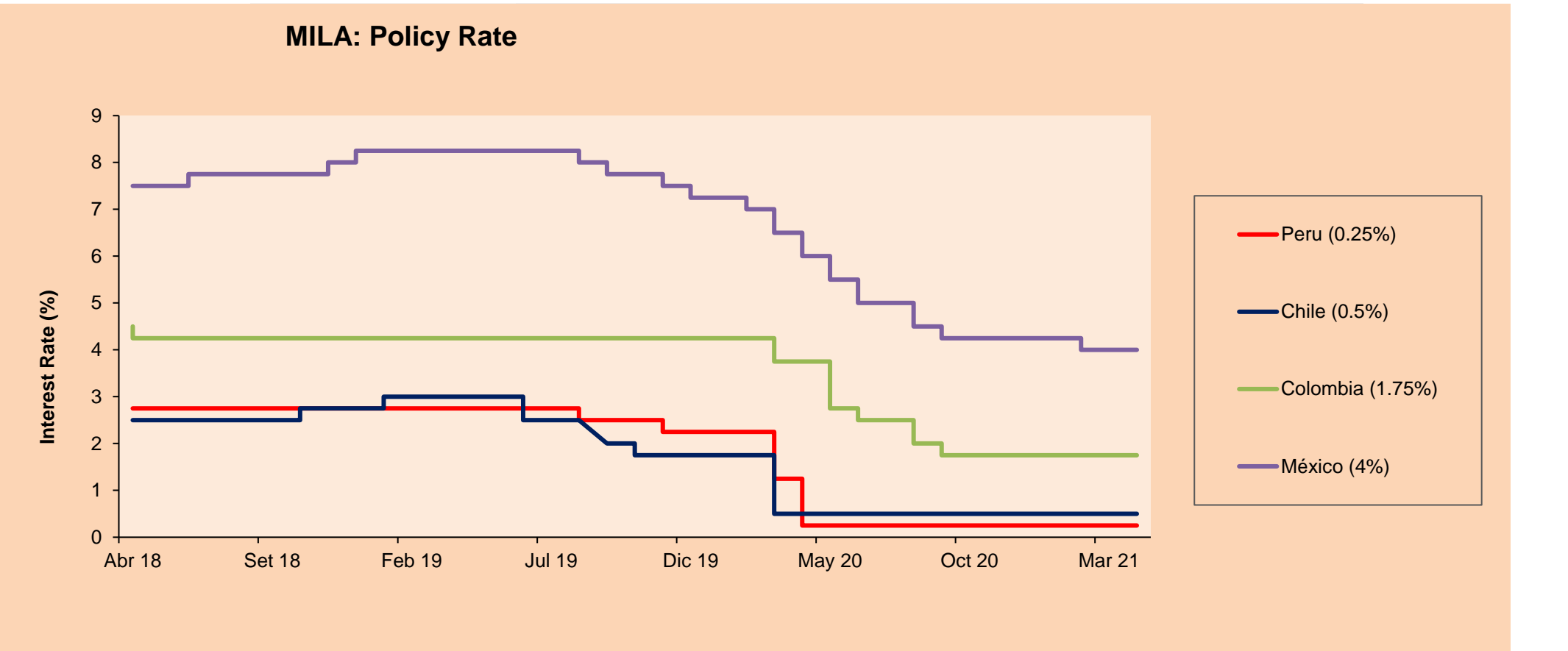
Mexico: The IPC index closed the day with a negative return of -0.18%. The best performing stocks were Grupo Aeroportuario del Centro (+ 1.39%) and Grupo Aeroportuario del Sureste (+ 0.44%). Headline: Mexico could receive IMF support to strengthen its reserves.



Base: 09/10/20=100
Source: Bloomberg

ETFs

ETFs	Curr.	Close	1D	5D	30 D	YTD	Exchange
▲ iShares MSCI All Peru Caped Index Fund	USD	35.815	0.20%	5.35%	0.15%	3.27%	NYSE Arca
▼ iShares MSCI All Chile Caped Index Fund	USD	34.24	-0.17%	-0.03%	6.77%	13.34%	Cboe BZX
▼ Global X MSCI Colombia	USD	10.3101	-0.05%	0.68%	-0.67%	-9.24%	NYSE Arca
▼ iShares MSCI Mexico Capped	USD	45.22	-0.31%	3.17%	8.03%	5.19%	NYSE Arca
▼ iShares MSCI Emerging Markets	USD	53.57	-1.47%	0.43%	2.27%	3.68%	NYSE Arca
▼ Vanguard FTSE Emerging Markets	USD	52.11	-1.46%	0.12%	1.72%	3.99%	NYSE Arca
▼ iShares Core MSCI Emerging Markets	USD	64.72	-1.34%	0.56%	2.44%	4.32%	NYSE Arca
▼ iShares JP Morgan Emerging Markets Bonds	USD	63.1	-0.77%	-0.09%	2.14%	3.31%	Cboe BZX
▲ Morgan Stanley Emerging Markets Domestic	USD	6.07	0.83%	0.83%	3.06%	-3.50%	New York



Source: Bloomberg

WORLD

Main Indices	Close	1 D*	5 D*	1 M*	YTD*	Market Cap. (US\$ Mill.)
▲ Dow Jones (USA)	33,446.26	0.05%	1.15%	5.17%	9.28%	10,132,144
▲ Standard & Poor's 500 (EEUU)	4,079.95	0.15%	3.07%	6.77%	8.62%	36,082,782
▲ NASDAQ Composite (USA)	13,688.84	-0.07%	4.93%	8.56%	6.21%	22,398,758
▼ Stoxx EUROPE 600 (Europe)	434.32	-0.22%	1.57%	4.09%	8.84%	10,051,814
▼ DAX (Germany)	15,176.36	-0.24%	2.42%	5.53%	10.62%	1,161,557
▲ FTSE 100 (United Kingdom)	6,885.32	0.91%	2.21%	2.47%	6.58%	1,448,307
▼ CAC 40 (France)	6,130.66	-0.01%	1.91%	3.86%	10.43%	1,685,398
▼ IBEX 35 (Spain)	8,597.40	-0.43%	1.24%	1.81%	6.49%	481,524
▼ MSCI AC Asia Pacific Index	206.93	-0.18%	1.65%	2.13%	3.51%	26,126,786
▼ HANG SENG (Hong kong)	28,674.80	-0.91%	1.19%	1.22%	6.09%	4,371,163
▼ SHANGHAI SE Comp. (China)	3,479.63	-0.10%	0.66%	1.70%	0.19%	6,562,740
▲ NIKKEI 225 (Japan)	29,730.79	0.12%	1.89%	3.08%	7.96%	4,005,377
▲ S&P / ASX 200 (Australia)	6,928.02	0.61%	1.89%	3.81%	6.21%	1,680,679
▼ KOSPI (South Korea)	3,137.41	-0.18%	0.32%	4.67%	9.13%	1,878,447

*Legend: Variation 1D: 1 Day; 5D: 5 Days; 1M: 1 Month; YTD: Var.% 12/31/20 to date

Equity

Germany (Stocks from DAX Index)

Largest gains	Curr.	Price	▲ %	Exchange	Largest losses	Curr.	Price	▼ %	Exchange
MUV2 GY	EUR	267.35	1.60	Xetra	ADS GY	EUR	270.5	-1.99	Xetra
DBK GY	EUR	10.468	1.24	Xetra	1COV GY	EUR	57.12	-1.96	Xetra
HEN3 GY	EUR	97	1.17	Xetra	MRK GY	EUR	144.85	-0.96	Xetra
ALV GY	EUR	220	0.76	Xetra	LIN GY	EUR	238.3	-0.87	Xetra

Europe (Stocks from STOXX EUROPE 600)

Largest gains	Curr.	Price	▲ %	Exchange	Largest losses	Curr.	Price	▼ %	Exchange
HFG GY	EUR	67.72	6.08	Xetra	CLNX SQ	EUR	42.34	-4.68	Soc.Bol SIBE
CCL LN	GBp	1799	5.39	Londres	PRX NA	EUR	93.96	-4.61	EN Amsterdam
TKWY NA	EUR	82.81	3.77	EN Amsterdam	AMBUB DC	DKK	305.4	-3.96	Copenhagen
ATO FP	EUR	59.32	3.71	EN Paris	ROSE SE	CHF	338	-3.57	SIX Swiss Ex

Global Overview:

United States:

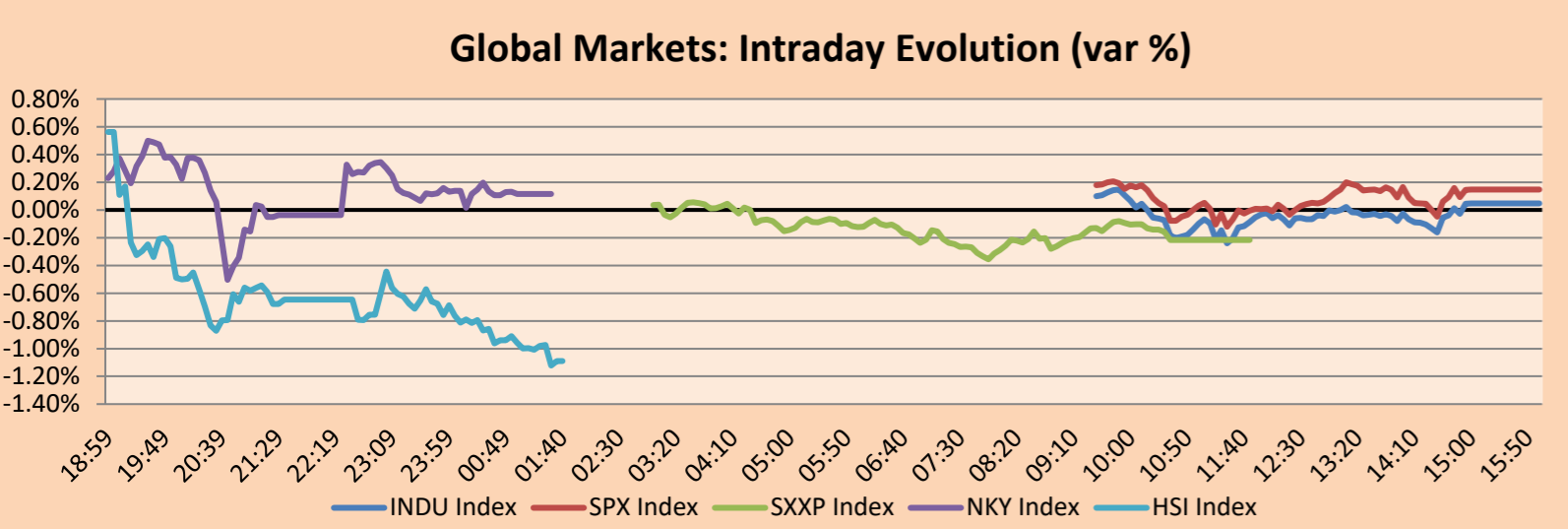
Major U.S. indexes ended today's trading session with mixed results, following positive impulses from the Federal Reserve, infrastructure plan talks and upcoming corporate results. The indexes received positive news from the FED's latest meeting minutes, which called for the Fed to maintain a pace of asset purchases as the economic recovery continues. This news mainly benefited the S&P 500, which reached a new closing high. On the other hand, Joe Biden spoke about his infrastructure stimulus package. The economic plan will now include an increase in the corporate tax rate to 28%. For its part, the Treasury Department noted that this tax proposal would generate about \$2.5 trillion. Meanwhile, investors have turned their attention to the week ahead, where first-quarter corporate results will be observed. According to Yahoo Finance, cyclical stocks such as financials and energy will bring profits closely tied to the pace of economic recovery. Lastly, NASDAQ closed in the negative despite positive results from major technology stocks: Amazon +1.72%, Apple +1.34%, Alphabet +1.35% and Facebook +2.23%. Thus, Dow +0.05%, S&P 500 +0.15% ended the day slightly higher while Nasdaq -0.07% closed with negative results.

Europe:

European markets ended with stocks mostly down, due to the problems found in the AstraZeneca vaccine and the response of the countries to this issue. Pan-European index stocks ended lower, with healthcare stocks being the hardest hit with pharmaceuticals, biotechnology and health sciences -0.77% and medical equipment and services -0.44% being the worst hit. Great Britain, managed to go against the downward trend due to the launch of the Modern COVID vaccine, after the vaccination process slowed down following the problems identified in the AstraZeneca vaccine. Germany, on the other hand, is facing its worst deficit in the last 30 years, mainly due to its fight against the third wave of COVID19. Finally, France's indices closed with mixed results; gains were seen in the food and general financials sectors, while the industrials, oil and gas production, and basic materials sectors led the markets lower. Thus, the STOXX 600 -0.22%, CAC 40 -0.01%, FTSE 100 +0.91% and DAX -0.24% closed with mixed performances, among other indices.

Asia:

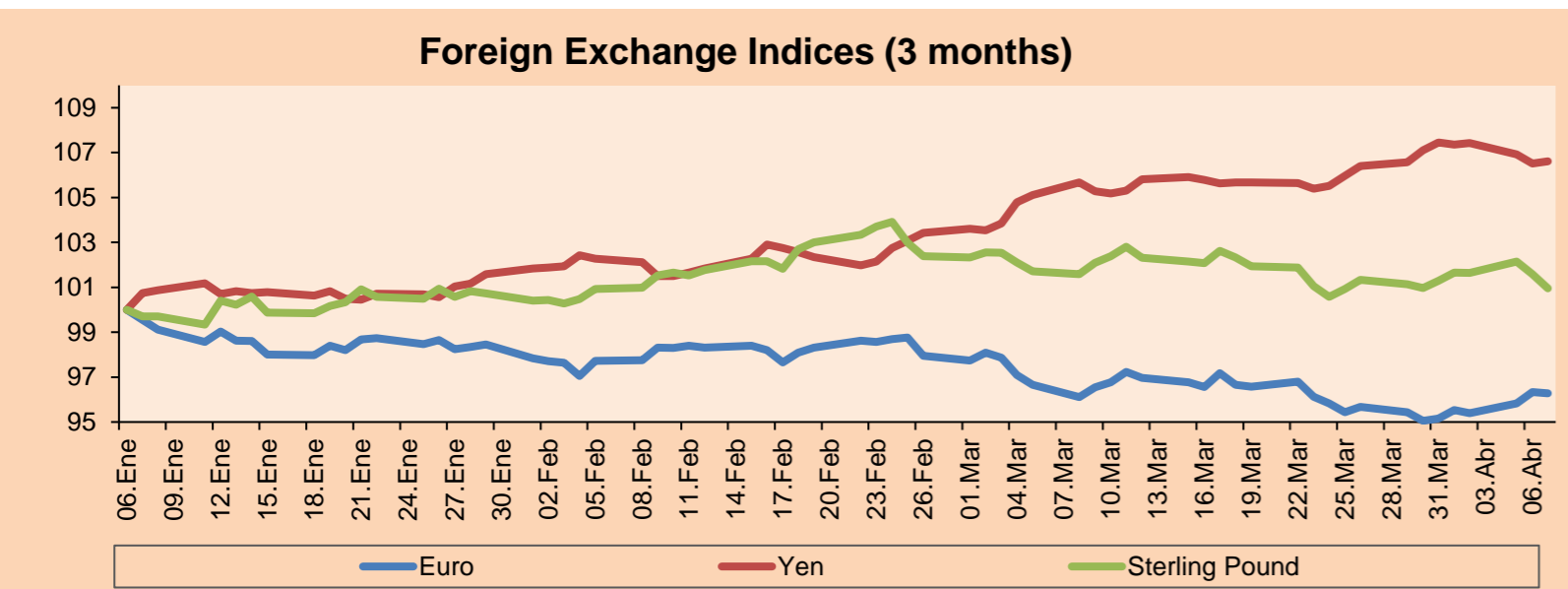
The main Asian indices obtained mixed results, due to concerns about the effects of the pandemic on the recovery of the Chinese economy; however, consumer demand and exports show a strong lag. In addition, Toshiba +18.28% as a result of the announcement of the purchase offer by the investment fund CVC Capital Partners and that it would be evaluating paying a premium of 30% over the market value; however, the company's listing was halted due to excess operations. In addition, Samsung -0.47% closed lower as a result of the drop in profits from the sale of chips by approximately 20%. In the Chinese market, Tencent -3.75% closed lower, thus dragging the Hang Seng index, and in general the energy sectors -0.2% and financial -0.63% closed lower. Finally, in Australia all sectors closed higher and the main banking stocks recovered the losses of previous days, closing with ANZ +0.32%, National Bank of Australia +0.42%, Westpac +0.57% and Commonwealth Bank +0.58%. Thus, S & P / ASX200 +0.61%, KOSPI +0.33%, Nikkei +0.12%, CSI300 -0.71% closed mixed.



Source: Bloomberg

Currency	Price	1 D*	5 D*	1 M*	YTD*
▼ Euro	1.1868	-0.07%	1.18%	0.18%	-2.85%
▲ Yen	109.8500	0.09%	-0.79%	0.88%	6.39%
▼ Sterling Pound	1.3737	-0.63%	-0.33%	-0.63%	0.49%
▲ Yuan	6.5425	0.05%	-0.16%	0.25%	0.23%
▲ Hong Kong Dollar	7.7849	0.11%	0.14%	0.20%	0.41%
▲ Brazilian Real	5.6163	0.44%	-0.31%	-3.46%	8.04%
▲ Argentine Peso	92.3305	0.05%	0.37%	1.94%	9.73%

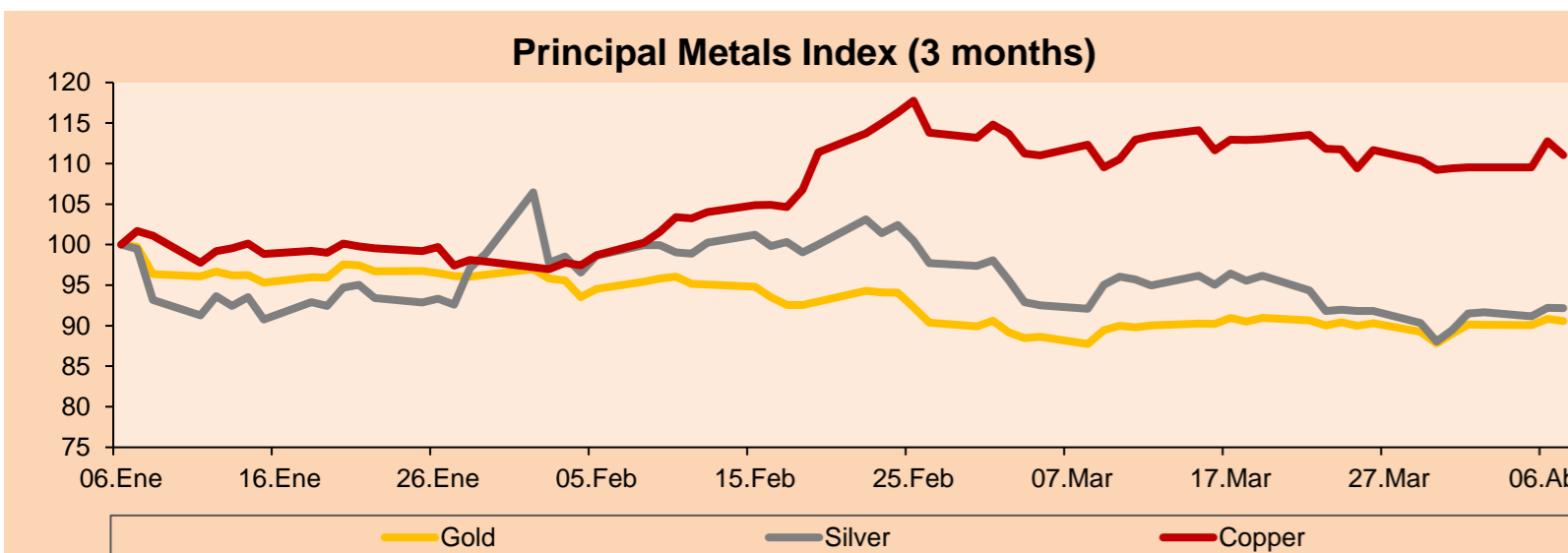
*Legend: Variation 1D: 1 Day; 5D: 5 Days; 1M: 1 Month; YTD: Var.% 12/31/20 to date



Base: 06/01/21=100
Source: Bloomberg

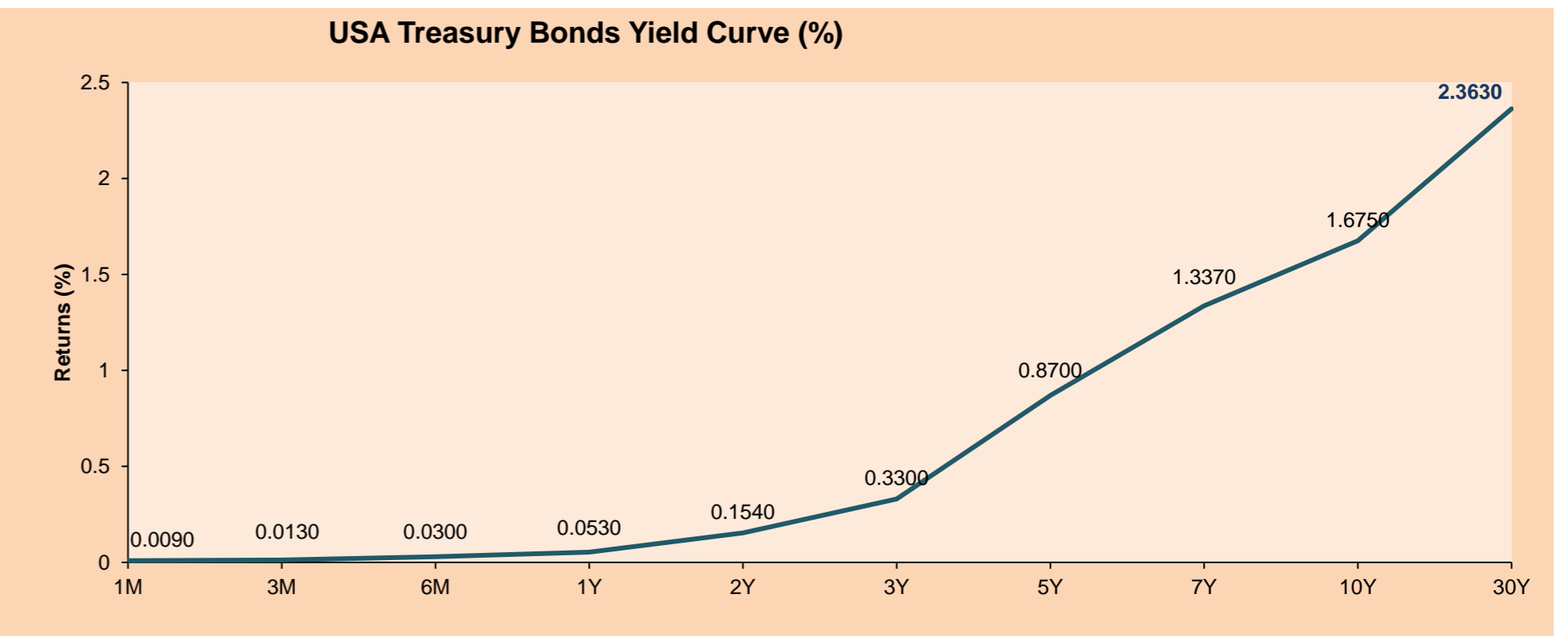
Commodities	Close	1 D*	5 D*	1 M*	YTD*
▼ Oro (US\$ Oz. T) (LME)	1,737.72	-0.32%	1.76%	3.22%	-8.46%
▼ Plata (US\$ Oz. T) (LME)	25.15	-0.05%	2.99%	0.08%	-4.75%
▼ Cobre (US\$ TM) (LME)	8,919.00	-1.49%	1.49%	-1.11%	15.10%
▲ Zinc (US\$ TM) (LME)	2,812.00	0.22%	0.24%	1.81%	3.03%
▲ Petróleo WTI (US\$ Barril) (NYM)	59.77	0.74%	1.03%	-7.95%	22.76%
▲ Estaño (US\$ TM) (LME)	27,760.00	-0.05%	0.81%	3.96%	35.12%
▲ Plomo (US\$ TM) (LME)	1,971.71	1.32%	0.98%	0.70%	-0.20%
▼ Azúcar #11 (US\$ Libra) (NYB-ICE)	15.14	-0.13%	2.51%	-6.54%	3.13%
▼ Cacao (US\$ TM) (NYB-ICE)	2,411.00	-0.58%	1.09%	-5.04%	-3.98%
▼ Café Arábica (US\$ TM) (NYB-ICE)	126.75	-0.08%	2.63%	-1.86%	-2.61%

*Leyenda: Variación 1D: 1 Día; 5D: 5 Días; 1M: 1 Mes; YTD: Var.% 31/12/20 a la fecha



Base: 06/01/21=100
Source: Bloomberg

ETFs	Curr.	Close	1D	5D	30 D	YTD	Exchange
SPDR S&P 500 ETF TRUST	USD	406.59	0.12%	2.59%	6.52%	8.75%	NYSE Arca
ISHARES MSCI EMERGING MARKET	USD	53.57	-1.47%	0.43%	2.27%	3.68%	NYSE Arca
ISHARES IBOXX HIGH YLD CORP	USD	87.23	-0.03%	0.06%	1.44%	-0.08%	NYSE Arca
FINANCIAL SELECT SECTOR SPDR	USD	34.84	0.49%	2.32%	2.05%	18.18%	NYSE Arca
VANECK GOLD MINERS	USD	33.93	-1.02%	4.40%	8.09%	-5.80%	NYSE Arca
ISHARES RUSSELL 2000 ETF	USD	220.69	-1.61%	-0.11%	0.89%	12.56%	NYSE Arca
SPDR GOLD SHARES	USD	162.76	-0.28%	1.75%	3.35%	-8.75%	NYSE Arca
ISHARES 20+ YEAR TREASURY BO	USD	136.88	-0.70%	1.06%	-0.69%	-13.22%	NASDAQ GM
INVESCO QQQ TRUST SERIES 1	USD	331.62	0.24%	3.91%	10.56%	5.70%	NASDAQ GM
ISHARES NASDAQ BIOTECHNOLOGY	USD	148.85	-1.79%	-1.14%	1.10%	-1.74%	NASDAQ GM
ENERGY SELECT SECTOR SPDR	USD	49.15	0.35%	0.18%	-7.35%	29.68%	NYSE Arca
PROSHARES ULTRA VIX ST FUTUR	USD	4.99	-4.04%	-11.68%	-44.06%	-53.15%	Cboe BZX
UNITED STATES OIL FUND LP	USD	40.86	0.39%	0.81%	-6.07%	23.78%	NYSE Arca
ISHARES MSCI BRAZIL ETF	USD	33.72	-0.68%	0.81%	8.63%	-9.04%	NYSE Arca
SPDR S&P OIL & GAS EXP & PR	USD	81.81	-0.23%	0.58%	-7.75%	39.85%	NYSE Arca
UTILITIES SELECT SECTOR SPDR	USD	64.94	-0.12%	1.41%	7.30%	3.57%	NYSE Arca
ISHARES US REAL ESTATE ETF	USD	94.20	0.00%	2.46%	8.23%	9.98%	NYSE Arca
SPDR S&P BIOTECH ETF	USD	131.75	-2.41%	-2.88%	-2.36%	-6.41%	NYSE Arca
ISHARES IBOXX INVESTMENT GRA	USD	130.58	-0.20%	0.41%	1.58%	-5.47%	NYSE Arca
ISHARES JP MORGAN USD EMERGI	USD	109.25	-0.35%	0.34%	2.37%	-5.75%	NASDAQ GM
REAL ESTATE SELECT SECT SPDR	USD	40.48	0.12%	2.51%	9.35%	10.72%	NYSE Arca
ISHARES CHINA LARGE-CAP ETF	USD	46.50	-2.27%	-0.34%	-1.34%	0.15%	NYSE Arca
CONSUMER STAPLES SPDR	USD	68.97	-0.25%	0.97%	6.14%	2.25%	NYSE Arca
VANECK JR GOLD MINERS	USD	47.19	-1.50%	4.84%	5.57%	-13.00%	NYSE Arca
SPDR BBG BARC HIGH YIELD BND	USD	108.94	0.01%	0.13%	1.40%	0.00%	NYSE Arca
VANGUARD REAL ESTATE ETF	USD	94.20	0.07%	2.55%	7.52%	10.91%	NYSE Arca
GRAYSCALE BITCOIN TRUST BTC	USD	47.57	-6.03%	-4.94%	4.78%	48.66%	OTC US



Source: Bloomberg

LIMA

Stocks

Ticker	Currency	Price	1D*	5D*	30D*	YTD*	Frequency	Volume (US\$)	Beta	Dividend Yield (%)	Price Earning	Market Cap. (M US\$)	Economic Sector*	Index Weight
▲ ALICORC1 PE**	S/.	7.74	0.19%	-0.33%	-0.84%	-1.57%	100.00%	568,635	0.68	3.23	20.21	1,830.37	Industrial	3.53%
ATACOB1 PE**	S/.	0.15	0.00%	0.00%	-7.50%	7.25%	50.00%	927	1.09	0.00	-	38.77	Mining	1.02%
▲ BACKUS1 PE**	S/.	23.00	0.44%	1.77%	-1.08%	14.14%	94.44%	16,481	0.54	1.53	11.03	8,770.81	Industrial	0.82%
▼ BAP PE**	US\$	144.50	-1.25%	5.17%	-5.41%	-10.02%	100.00%	1,708,578	1.64	6.09	-	13,638.24	Diverse	5.82%
▼ BVN PE**	US\$	10.13	-1.17%	1.30%	-11.53%	-15.58%	100.00%	105,408	1.17	0.00	-	2,792.18	Mining	5.88%
▲ CASAGRC1 PE**	S/.	6.25	1.63%	3.14%	5.93%	31.58%	88.89%	81,861	0.54	3.61	11.22	145.95	Agricultural	1.31%
▲ BBVAC1 PE**	S/.	2.51	1.62%	3.72%	5.02%	15.67%	100.00%	227,279	0.66	3.44	26.27	4,543.32	Finance	2.85%
▲ CORARE1 PE**	S/.	1.18	2.61%	0.85%	2.61%	32.58%	100.00%	81,479	0.55	5.92	7.04	423.46	Industrial	1.72%
- CPACASC1 PE**	S/.	5.80	0.00%	-0.85%	-1.53%	9.43%	94.44%	261,467	0.60	3.97	41.43	746.32	Industrial	2.38%
▲ CVERDEC1 PE**	US\$	25.25	0.60%	1.00%	-2.13%	20.70%	100.00%	356,265	0.89	0.00	32.20	8,838.91	Mining	5.25%
- ENGEPEC1 PE**	S/.	2.55	0.00%	-1.92%	-1.92%	27.50%	83.33%	23,159	0.50	8.62	15.59	2,006.82	Public Services	1.44%
- ENDISPC1**	S/.	6.05	0.00%	0.00%	2.54%	12.04%	38.89%	470	0.48	0.00	14.19	1,071.03	Public Services	0.98%
▲ FERREYC1 PE**	S/.	2.24	0.90%	0.90%	4.67%	28.74%	100.00%	393,965	0.57	3.42	14.90	605.90	Diverse	4.90%
▲ AENZAC1 PE**	S/.	1.82	1.11%	1.11%	4.00%	4.60%	88.89%	235,844	0.81	0.00	-	439.94	Diverse	4.05%
- IFS PE**	US\$	30.81	0.00%	2.02%	-3.11%	-0.42%	100.00%	289,123	1.26	5.68	33.50	3,556.94	Diverse	7.22%
- INRETC1 PE**	US\$	42.00	0.00%	-0.71%	-6.87%	7.14%	100.00%	348,526	0.65	1.34	51.50	4,317.91	Diverse	5.28%
▲ LUSURC1 PE**	S/.	14.90	0.13%	2.05%	-30.70%	-41.57%	100.00%	81,245	0.54	4.68	15.01	2,011.47	Public Services	1.81%
- MINSUR1 PE**	S/.	2.86	0.00%	4.00%	1.06%	54.59%	94.44%	56,334	0.79	0.00	78.25	2,285.88	Mining	3.09%
▲ PML PE**	US\$	0.16	0.65%	1.30%	8.33%	47.17%	72.22%	6,390	1.45	0.00	-	41.21	Mining	2.12%
▼ RELAPAC1 PE**	S/.	0.13	-1.49%	2.33%	2.33%	91.30%	94.44%	33,091	0.49	0.00	-	304.44	Industrial	2.12%
▼ SCCO PE**	US\$	71.20	-1.39%	3.91%	-2.96%	8.04%	88.89%	42,389	0.96	2.39	33.10	55,042.82	Mining	2.14%
▲ SIDERC1 PE**	S/.	1.13	0.89%	3.67%	10.78%	32.94%	88.89%	76,927	0.80	24.50	13.43	384.67	Industrial	1.43%
▲ TV PE**	US\$	0.16	6.00%	3.92%	12.77%	8.16%	94.44%	28,714	1.47	0.00	-	157.27	Mining	2.93%
- UNACEMC1 PE**	S/.	1.72	0.00%	0.00%	-4.44%	10.97%	94.44%	255,546	0.82	0.76	37.68	866.95	Industrial	3.00%
▲ VOLCABC1 PE**	S/.	0.84	2.44%	0.00%	2.44%	61.54%	100.00%	821,310	0.87	0.00	-	949.33	Mining	5.90%
▼ NEXAPEC1 PE**	S/.	3.37	-2.03%	-1.75%	-13.14%	19.08%	72.22%	156,490	1.12	0.00	-	1,235.63	Mining	1.56%

Quantity of shares: 26
Source: Bloomberg, Economática
* Bloomberg Industry Classification System
** PER is used in the stock market and original currency of the instrument
*Legend: Variation 1D: 1 Day; 5D: 5 Days, 1M: 1 Month; YTD: Var.% 12/31/20 to date

Up 13
Down 5
Hold 8

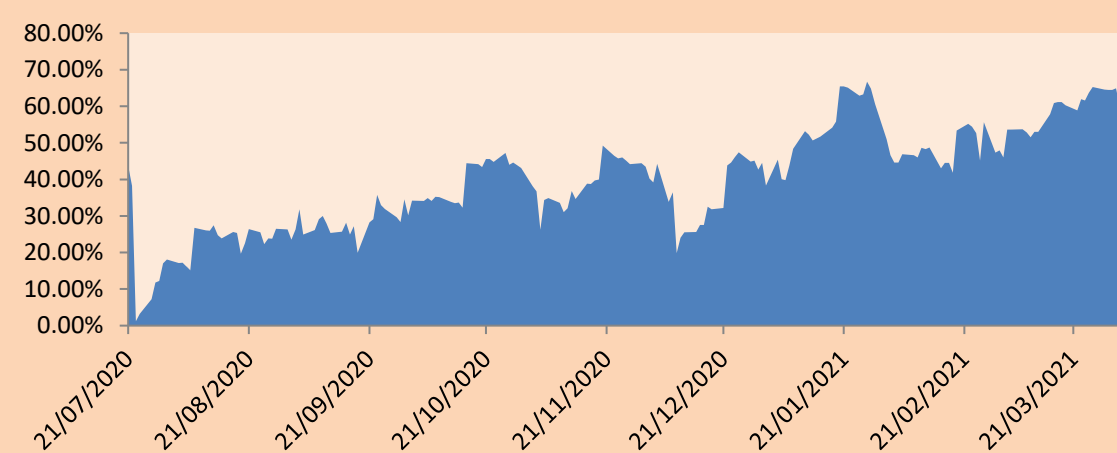
Sectorial Indices

	Close	1D*	5D*	30D*	YTD*	Beta
▼ S&P/BVLMining	413.11	-1.50%	-0.44%	-6.71%	5.94%	0.95
▼ S&P/BVLConsumer	1,184.83	-0.21%	-1.21%	-5.98%	8.84%	0.41
▲ S&P/BVLIndustrials	221.20	0.52%	0.41%	0.95%	16.08%	0.50
▼ S&P/BVLFinancials	946.61	-1.65%	1.14%	-7.06%	-8.44%	1.76
▲ S&P/BVLConstruction	230.73	0.38%	0.15%	-0.69%	10.33%	0.54
- S&P/BVLPublicSvcs	654.73	0.00%	-0.63%	1.57%	6.62%	0.13
- S&P/BVLElectricUtil	639.18	0.00%	-0.63%	1.57%	6.62%	0.13

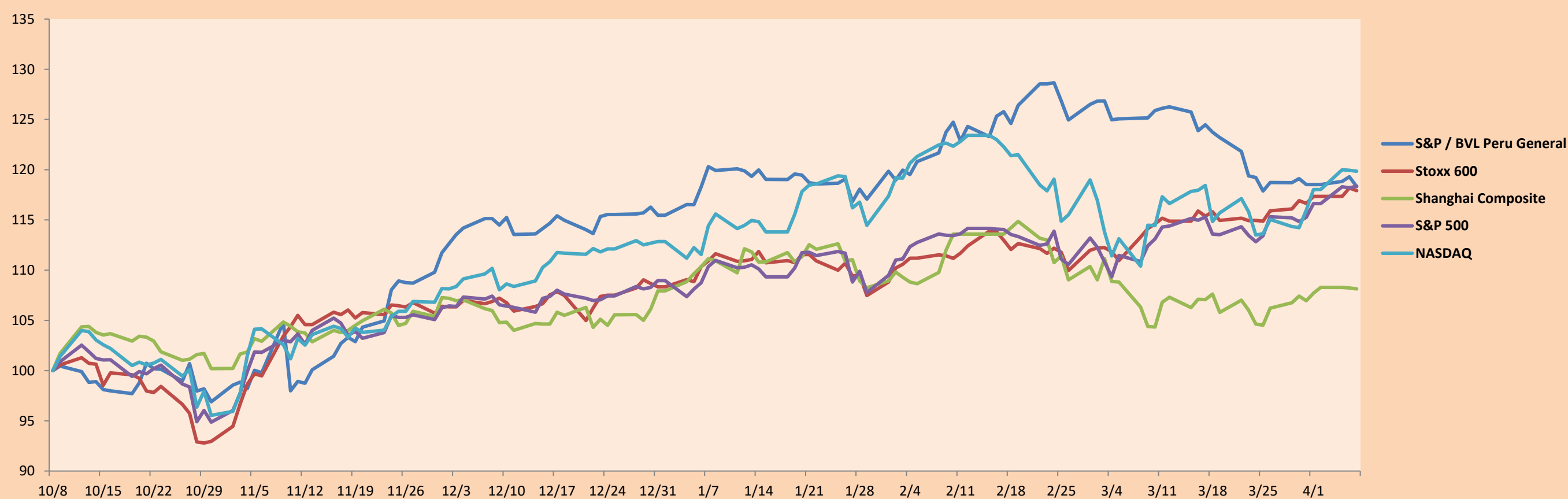
S&P/BVLConstructionTRPEN

*Legend: Variation 1D: 1 Day; 5D: 5 Days, 1M: 1 Month; YTD: Var.% 12/31/20 to date

Correlation Graph of Returns of Mining Index against Metallic Index of London (3 months)



Indices (6 months)



Base: 08/10/20=100
Source: Bloomberg

Capital Market Laboratory Coordinator: Economist Bruno Bellido
Collaboration: : Maria Camarena, Alonso García, Adrian Paredes y Jairo Valverde
email: pulsobursatil@ulima.edu.pe
facebook: www.facebook.com/pulsobursatil.ul

SOVEREIGN RATING

RISK RATINGS

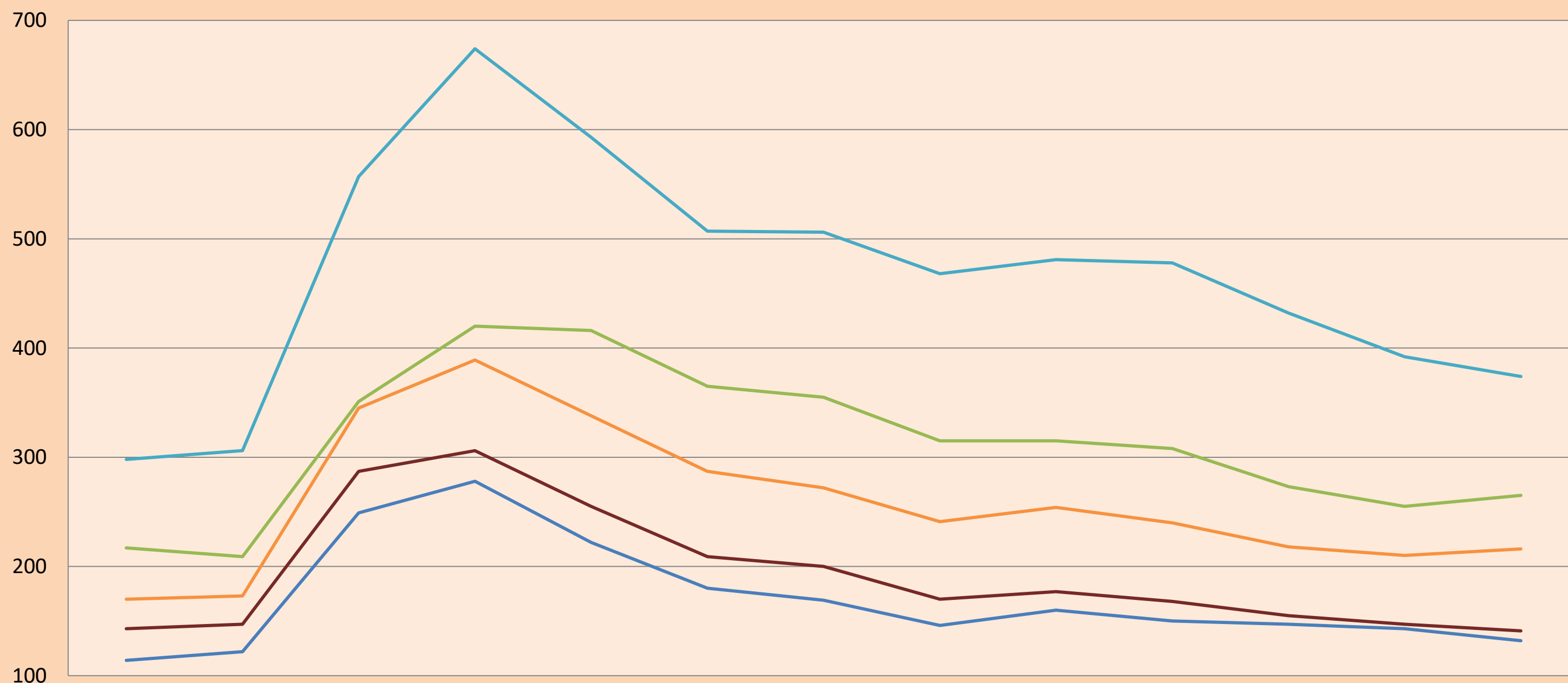
Moody's	S&P	Fitch	
Aaa	AAA	AAA	Prime
Aa1	AA+	AA+	High credit quality
Aa2	AA	AA	
Aa3	AA-	AA-	
A1	A+	A+	Medium-high grade, with low credit risk
A2	A	A	
A3	A-	A-	
Baa1	BBB+	BBB+	Moderate Credit Risk
Baa2	BBB	BBB	
Baa3	BBB-	BBB-	
Ba1	BB+	BB+	It has speculative elements and it is subject to substantial credit risk
Ba2	BB	BB	
Ba3	BB-	BB-	
B1	B+	B+	It is considered speculative and it has high credit risk
B2	B	B	
B3	B-	B-	
Caa1	CCC+	CCC	Bad credit conditions and it is subject to high credit risk
Caa2	CCC		
Caa3	CCC-		
Ca	CC	DDD	Very close to default or in default
	C		
C	D		

Source: Bloomberg

Latin America Credit Rating			
Clasificadora de riesgo			
Country	Moody's	Fitch	S&P
Peru	A3	BBB+	BBB+
México	Ba2	BB-	BB-
Venezuela	C	WD	SD
Brazil	Ba2	BB-	BB-
Colombia	Baa2	BBB-	BBB-
Chile	A1	A-	A
Argentine	Ca	WD	CCC+
Panama	Baa2	BBB-	BBB

Source: Bloomberg

LATAM Country Risk (bps)



	Ene-20	Feb-20	Mar-20	Abr-20	May-20	Jun-20	Jul-20	Ago-20	Set-20	Oct-20	Nov-20	Dic-20	Ene-21
Perú	114	122	249	278	222	180	169	146	160	150	147	143	132
Brasil	217	209	351	420	416	365	355	315	315	308	273	255	265
México	298	306	557	674	593	507	506	468	481	478	432	392	374
Colombia	170	173	345	389	338	287	272	241	254	240	218	210	216
Chile	143	147	287	306	255	209	200	170	177	168	155	147	141

Source: BCRP

Capital Market Laboratory Coordinator: Economist Bruno Bellido
Collaboration: : María Camarena, Alonso García, Adrian Paredes y Jairo Valverde
email: pulsobursatil@ulima.edu.pe
facebook: www.facebook.com/pulsobursatil.ul