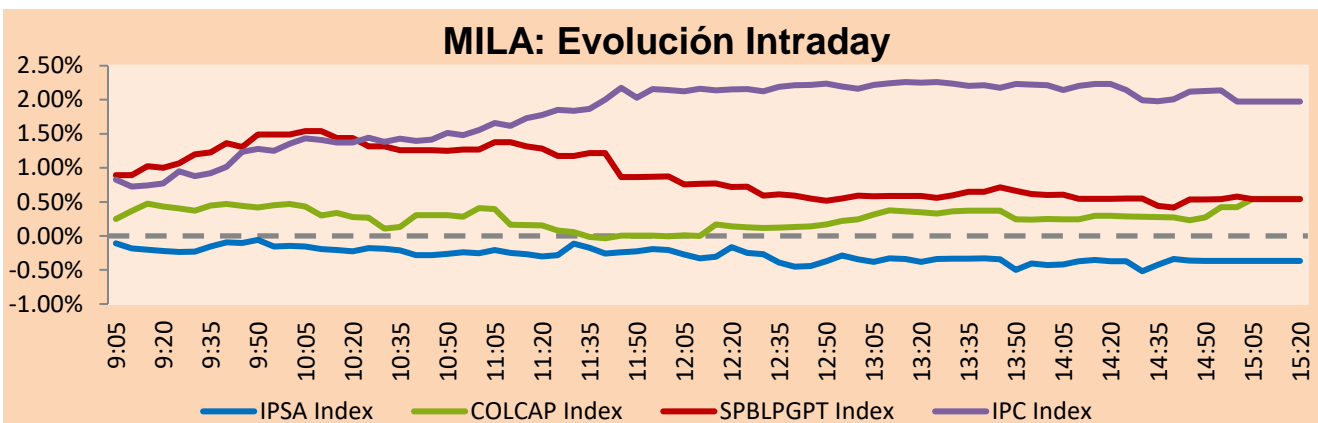


MILA

Lima, April 5, 2021

Main Indexes	Close	1 D	5 D	1 M	YTD	Cap. Burs. (US\$ bill)
▼ IPSA (Chile)	4,871.17	-0.29%	0.35%	3.34%	16.61%	133.74
▼ IGPA (Chile)	24,592.89	-0.21%	0.58%	3.40%	17.07%	160.98
▼ COLSC (Colombia)	1,044.33	-0.37%	-0.62%	-1.17%	-1.38%	5.37
▲ COLCAP (Colombia)	1,323.97	0.54%	0.29%	-1.54%	-7.92%	78.57
▲ S&P/BVL (Perú)*	21,429.88	0.27%	0.83%	-4.97%	2.92%	109.46
▲ S&P/BVL SEL (Perú)	572.14	0.26%	0.98%	-4.68%	3.76%	96.92
▼ S&P/BVL LIMA 25	28,765.62	-0.11%	0.43%	-2.38%	14.16%	108.46
▲ IPC (México)	48,245.85	2.12%	2.62%	4.11%	9.48%	300.82
▲ S&P MILA 40	547.05	0.12%	1.63%	0.38%	2.32%	6,117.59

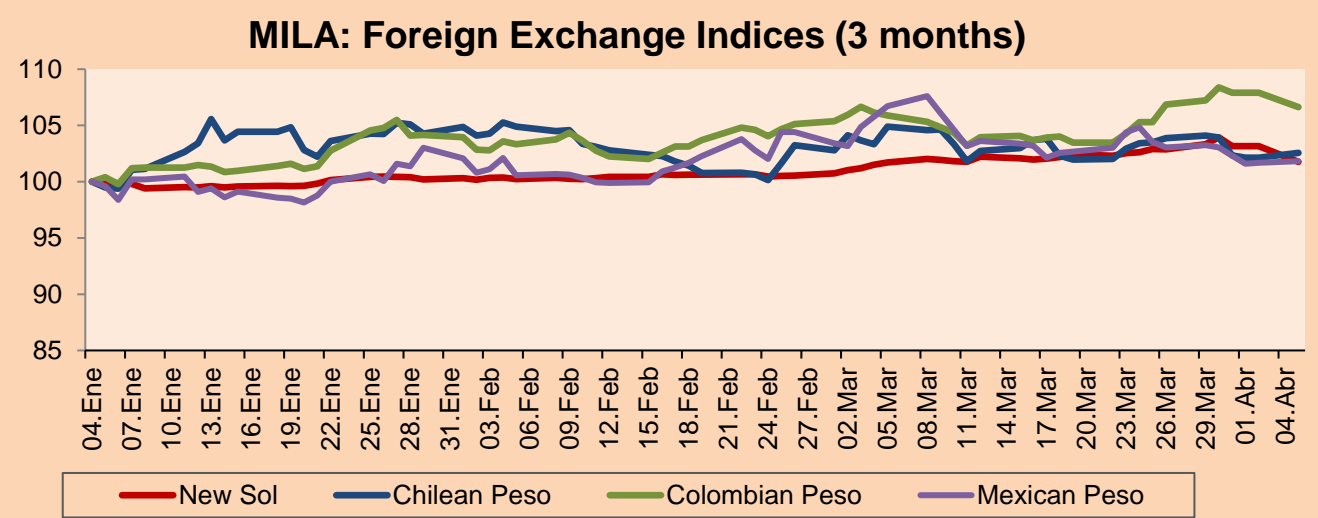
*Legend: Variation 1D: 1 day; 5D: 5 days; 1M: 1 Month; YTD: Var% 12/31/20 to date



Source: Bloomberg

Currency	Price	1D*	5D*	30 D*	YTD*
▼ New Sol (PEN)	3,6935	-1.34%	-1.51%	0.07%	2.09%
▲ Chilean Peso (CLP)	720.59	0.42%	-1.46%	-2.23%	1.24%
▼ Colombian Peso (COP)	3,660.20	-1.19%	-0.56%	0.68%	6.72%
▲ Mexican Peso (MXN)	20.34	0.13%	-1.38%	-4.58%	2.12%

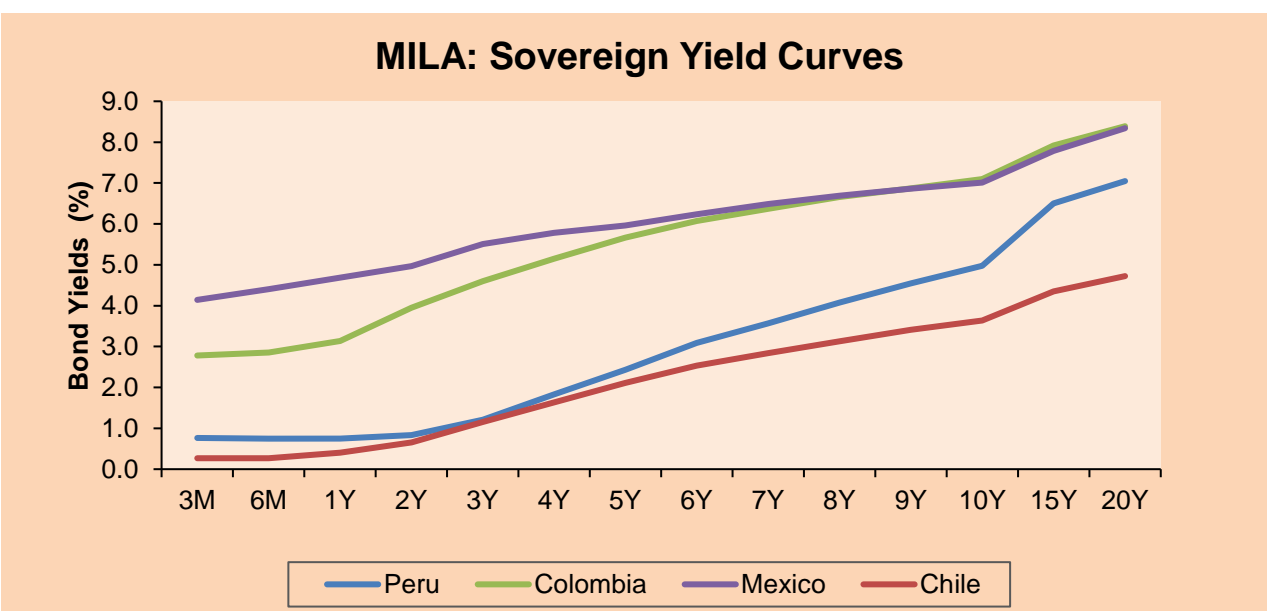
*Legend: Variation 1D: 1 day; 5D: 5 days; 1M: 1 Month; YTD: Var% 12/31/20 to date



Base: 04/01/21=100

Source: Bloomberg

Fixed Income	Currency	Price	Bid Yield (%)	Ask Yield (%)	Duration
PERU 7.35 07/21/25	USD	124.11	1.58	1.46	3.77
PERU 4.125 08/25/27	USD	112.274	2.11	2.02	5.72
PERU 8.75 11/21/33	USD	157.158	3.24	3.17	8.70
PERU 6.55 03/14/37	USD	136.958	3.53	3.48	10.54
PERU 5.625 11/18/2050	USD	134.905	3.71	3.65	16.40
CHILE 2.25 10/30/22	USD	102.709	0.64	0.37	1.53
CHILE 3.125 01/21/26	USD	108.11	1.42	1.32	4.49
CHILE 3.625 10/30/42	USD	106.042	3.25	3.21	15.30
COLOM 11.85 03/09/28	USD	158.405	2.70	2.47	5.32
COLOM 10.375 01/28/33	USD	153.85	4.56	4.36	7.85
COLOM 7.375 09/18/37	USD	134.157	4.48	4.38	10.64
COLOM 6.125 01/18/41	USD	120.908	4.55	4.49	12.32
MEX 4 10/02/23	USD	120.908	4.545	4.485	12.32
MEX5.55 01/45	USD	116.796	4.43	4.38	14.05



Source: Bloomberg

Equity

Largest gains	Exchange	Currency	Price	▲%	Largest losses	Exchange	Currency	Price	▼%
GRUPO F BANORT-O	Mexico	MXN	122.72	6.59	PARQUE ARAUCO	Chile	CLP	1384.3	-2.43
SOUTHERN COPPER	Peru	USD	71.77	4.74	VOLCAN CIA MIN-B	Peru	PEN	0.82	-2.38
WALMART DE MEXIC	Mexico	MXN	66.86	3.71	ECOPETROL	Colombia	COP	2325	-1.73
FOMENTO ECON-UBD	Mexico	MXN	159.66	3.61	CENCOSUD SHOPPIN	Chile	CLP	1460	-1.68
GRUPO CARSO-A1	Mexico	MXN	57.78	3.40	CORFICOLOMBIANA	Colombia	COP	32230	-1.53

Per Turnover	Exchange	Amount (US\$)	Per Volume	Exchange	Volume
GRUPO F BANORT-O	Mexico	62,487,547	ENEL AMERICAS SA	Chile	152,972,798
GRUPO MEXICO-B	Mexico	35,978,649	BANCO SANTANDER	Chile	120,087,109
WALMART DE MEXIC	Mexico	28,896,078	ITAU CORPBANCA	Chile	105,237,039
ENEL AMERICAS SA	Chile	25,557,904	ENEL CHILE SA	Chile	45,625,072
CEMEX SAB-CPO	Mexico	22,025,344	BANCO DE CHILE	Chile	34,159,701

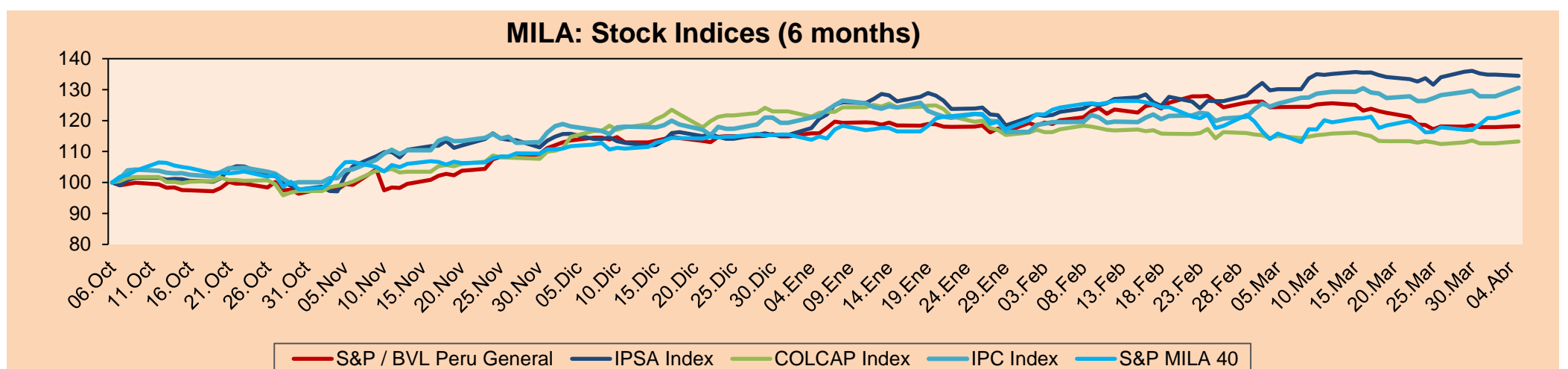
MILA

Peru: The General Index of BVL ended today's session with a positive result of +0.27%. The index maintains an annual cumulative positive trend of +2.92% in local currency, while the dollar-adjusted performance amounted to +0.81%. Then, the S&P / BVL Peru SEL varied by +0.26% while the S&P / BVL LIMA 25 by -0.11%. The spot PEN reached S / 3.6935. Headline: At risk that 4.8 million soles will not pay their debts in the next twelve months

Chile: The IPSA index ended the day with a negative return of -0.29%. The worst performing stocks were Plaza SA (-2.82%) and Ripley Corp SA (-2.68%). Headline: AFP PlanVital lost almost 130,000 affiliates since it failed to win the bidding process

Colombia: The COLCAP index closed today with a positive return of +0.54%. The most benefited sectors of the day were Financials (+1.25%) and Utilities (+1.11%). The best performing stocks were BanColombia SA (+4.32%) and Interconexión Eléctrica SA (+3.17%). Headline: With green taxes, Colombia would receive close to 3.4 billion dollars a year

Mexico: The IPC index closed the day with a positive return of +2.12%. The best performing stocks were Grupo Financiero Banorte (+6.59%) and Alsea SAB de CV (+4.16%). Headline: Mexican Institute of Economics and Finance says that the Mexican economy is showing signs of reactivation, but warns that caution is needed.

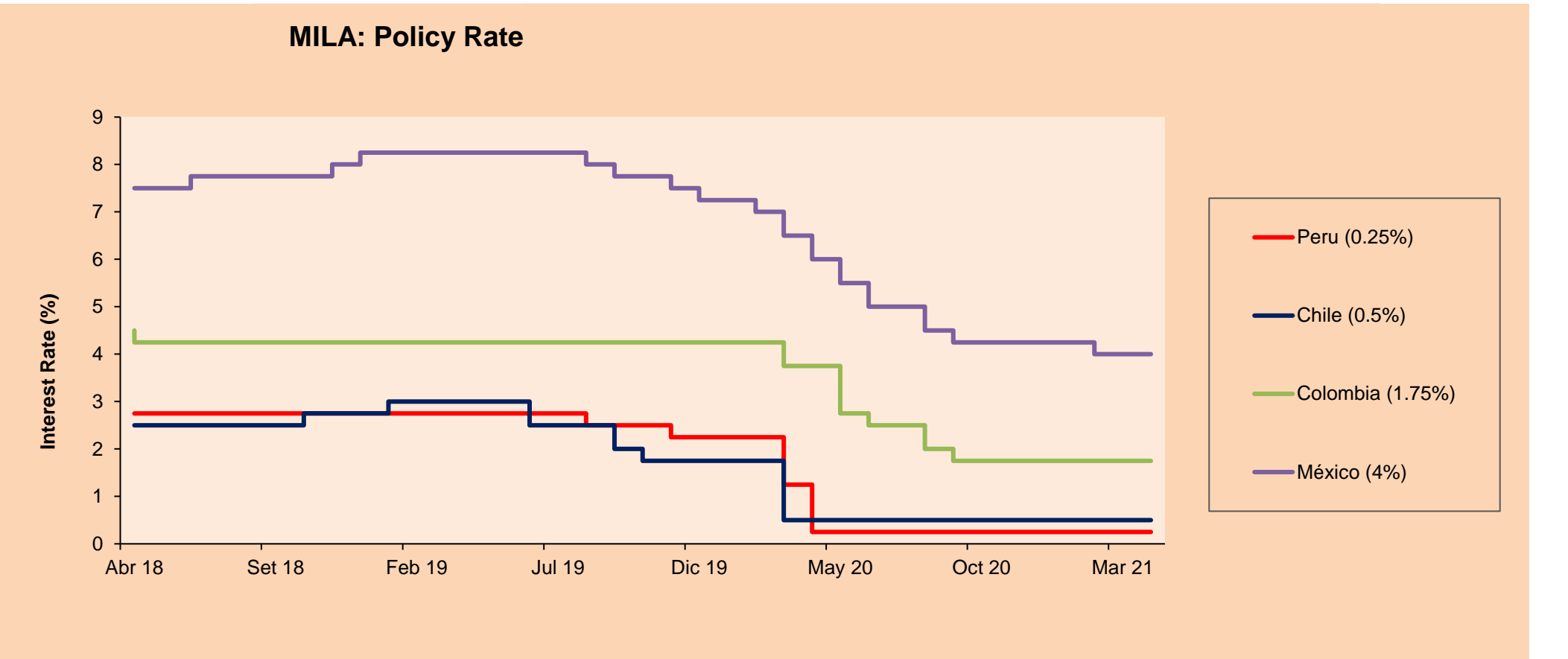


Base: 07/10/20=100

Source: Bloomberg

ETFs

ETFs	Curr.	Close	1D	5D	30 D	YTD	Exchange
▲ iShares MSCI All Peru Caped Index Fund	USD	34.9	0.75%	3.22%	-3.08%	0.63%	NYSE Arca
▼ iShares MSCI All Chile Caped Index Fund	USD	34.14	-0.47%	1.61%	5.57%	13.01%	Cboe BZX
▼ Global X MSCI Colombia	USD	10.215	-0.54%	1.54%	-1.25%	-10.08%	NYSE Arca
▲ iShares MSCI Mexico Capped	USD	45.23	1.48%	2.35%	8.73%	5.21%	NYSE Arca
▲ iShares MSCI Emerging Markets	USD	54.07	0.39%	2.21%	0.45%	4.64%	NYSE Arca
▲ Vanguard FTSE Emerging Markets	USD	52.63	0.21%	1.98%	0.06%	5.03%	NYSE Arca
▲ iShares Core MSCI Emerging Markets	USD	65.25	0.28%	2.22%	0.63%	5.17%	NYSE Arca
▲ iShares JP Morgan Emerging Markets Bonds	USD	63.42	0.13%	1.36%	1.29%	3.83%	Cboe BZX
▼ Morgan Stanley Emerging Markets Domestic	USD	6.01	-0.17%	0.17%	0.67%	-4.45%	New York



Source: Bloomberg

Capital Market Laboratory Coordinator: Economist Bruno Bellido
Collaboration: : María Camarena, Alonso García, Adrian Paredes y Jairo Valverde
email: pulsobursatil@ulima.edu.pe
facebook: www.facebook.com/pulsobursatil.ul

WORLD

Main Indices	Close	1 D*	5 D*	1 M*	YTD*	Market Cap. (US\$ Mill.)
▲ Dow Jones (USA)	33,527.19	1.13%	1.37%	6.45%	9.54%	10,103,866
▲ Standard & Poor's 500 (EEUU)	4,077.91	1.44%	2.60%	6.14%	8.57%	36,067,289
▲ NASDAQ Composite (USA)	13,705.59	1.67%	4.32%	6.08%	6.34%	22,436,691
▲ Stoxx EUROPE 600 (Europe)	432.22	0.61%	2.16%	4.60%	8.32%	10,063,568
▲ DAX (Germany)	15,107.17	0.66%	3.32%	7.60%	10.12%	1,164,539
▲ FTSE 100 (United Kingdom)	6,737.30	0.35%	0.94%	1.87%	4.28%	1,402,994
▲ CAC 40 (France)	6,102.96	0.59%	2.53%	5.05%	9.94%	1,684,902
▼ IBEX 35 (Spain)	8,577.60	-0.03%	2.00%	2.65%	6.24%	483,552
▲ MSCI AC Asia Pacific Index	207.11	0.31%	0.96%	0.53%	3.60%	26,227,455
▲ HANG SENG (Hong kong)	28,938.74	1.97%	3.72%	-0.54%	6.27%	4,418,806
▲ SHANGHAI SE Comp. (China)	3,484.39	0.52%	1.93%	-0.50%	0.33%	6,543,341
▲ NIKKEI 225 (Japan)	30,089.25	0.79%	2.40%	4.24%	9.63%	4,035,768
▲ S&P / ASX 200 (Australia)	6,828.69	0.56%	0.56%	1.92%	4.63%	1,665,360
▲ KOSPI (South Korea)	3,120.83	2.12%	2.62%	3.44%	8.94%	1,858,516

*Legend: Variation 1D: 1 Day; 5D: 5 Days; 1M: 1 Month; YTD: Var.% 12/31/20 to date

Equity

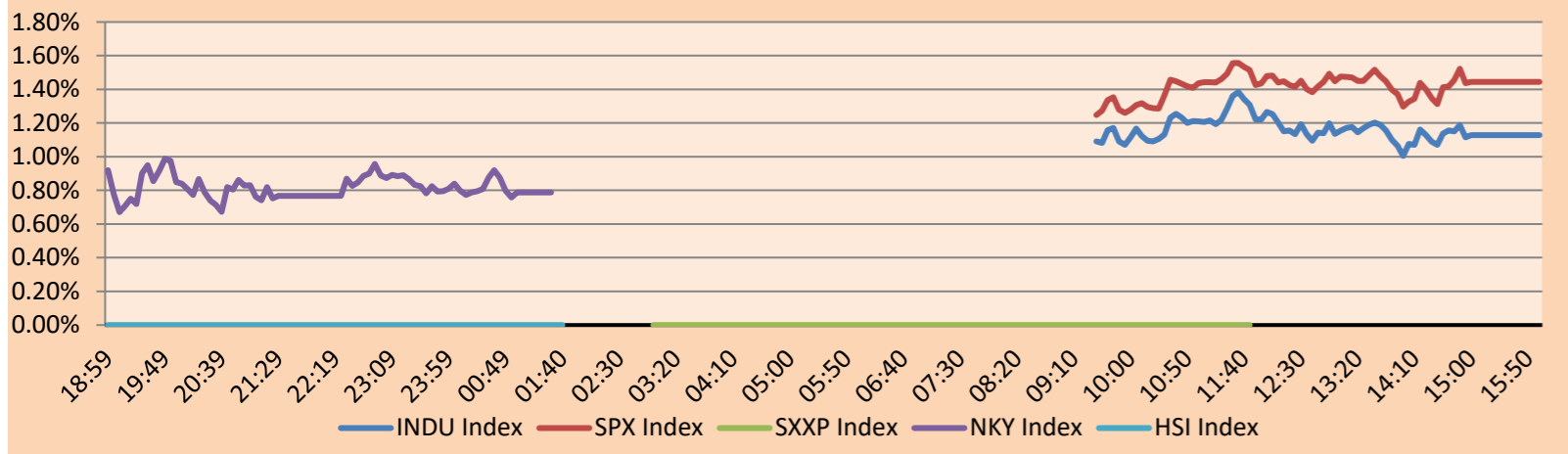
Germany (Stocks from DAX Index)

Largest gains	Curr.	Price	▲ %	Exchange	Largest losses	Curr.	Price	▼ %	Exchange
IFX GY	EUR			Xetra	BAS GY	EUR			Xetra
EOAN GY	EUR			Xetra	HEI GY	EUR			Xetra
DHER GY	EUR			Xetra	DBK GY	EUR			Xetra
ENR GY	EUR			Xetra	ALV GY	EUR			Xetra

Europe (Stocks from STOXX EUROPE 600)

Largest gains	Curr.	Price	▲ %	Exchange	Largest losses	Curr.	Price	▼ %	Exchange
AMBUB DC	DKK			Copenhagen	UPM FH	EUR			Helsinki
SGRE SQ	EUR			Soc.Bol SIBE	STERV FH	EUR			Helsinki
KINDSDB SS	SEK			Stockholm	SKAB SS	SEK			Stockholm
KGH PW	PLN			Warsaw	CSGN SE	CHF			SIX Swiss Ex

Global Markets: Intraday Evolution (var %)



Source: Bloomberg

Currency	Price	1 D*	5 D*	1 M*	YTD*
▲ Euro	1.1813	0.46%	0.41%	-0.86%	-3.30%
▼ Yen	110.1800	-0.46%	0.34%	1.73%	6.71%
▲ Sterling Pound	1.3900	0.49%	1.00%	0.43%	1.68%
- Yuan	6.5670	0.00%	-0.05%	1.08%	0.61%
▲ Hong Kong Dollar	7.7760	0.00%	0.03%	0.16%	0.30%
▼ Brazilian Real	5.6655	-0.76%	-2.04%	-0.31%	8.98%
▲ Argentine Peso	92.1623	0.52%	0.27%	1.99%	9.53%

*Legend: Variation 1D: 1 Day; 5D: 5 Days; 1M: 1 Month; YTD: Var.% 12/31/20 to date

Global Overview:

United States:

The main US indexes closed higher due mainly to the rebound of several of the large companies in the technology sector, among which are GOOGL + 4.19%, GOOG + 4.11%, MSFT + 2.77%, ORCL + 3.27% among others. It should be noted that despite the leakage of data from more than 500 million Facebook users during the weekend and their lawsuits regarding anticompetitive practices, this had an upward closing of FB + 3.43% and even the prices of their announcements have increased by 30% compared to 2020. In turn, Tesla shares also experienced a strong rise TSLA + 4.43%, thanks to the fact that the number of vehicles delivered during the first quarter doubled compared to last year. This was also reflected in its competitors such as General Motor + 5.61%, Volkswagen + 4.43% and Ford + 4.52%. On the other hand, GameStop's stock had a GME fall of -2.5% as a consequence of the announcement of the sale of 3.5 million of its common shares, which represent around 5% of total shares. In summary, the American stock indexes at the close had the following values DOW JONES + 1.13%, SPX + 1.44% and NASDAQ + 1.67%.

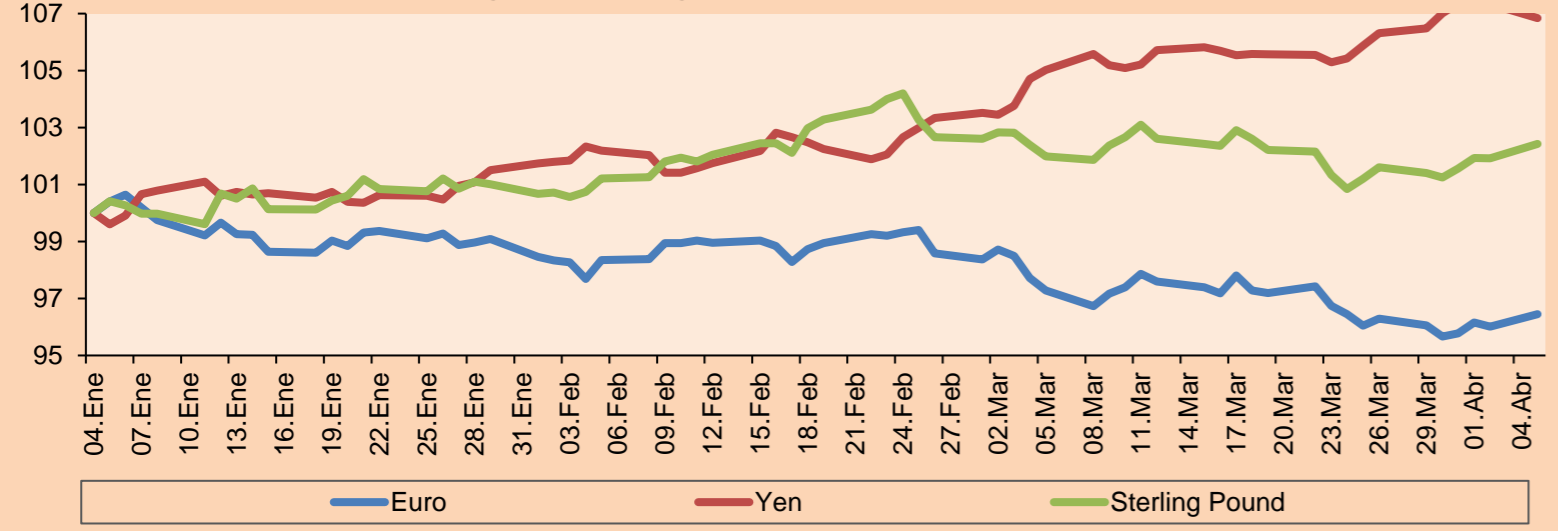
Europe:

The main European indexes remained unchanged due to the holiday.

Asia:

The major Asian indexes had mixed results, due to optimistic jobs data in the United States and tension in the increase of COVID19 cases. The Chinese indexes: including Hong Kong index, and Australian indexes not participating today due to Qingming Holiday and Easter; respectively, which are classified as a national holiday. In Japan, there was positivity gained across industries after proven positive US jobs data was announced, causing global economic stabilization. Thus, there is a general growth of all sectors, highlighting the Communication Services sector + 1.85% and Non-basic consumer products + 1.58%. Likewise, South Korea also achieves positive returns, only its gains are limited due to the firmer dollar, which is holding back foreign investors. Otherwise, LG will withdraw from the mobile phone market, unable to find buyers and record six consecutive years of losses, generating a 2.52% drop in the stock. Lastly, India's shares tumble as it reversed coronavirus cases, surpassing 100,000 cases daily. Thus, KOSPI + 0.26%, Nikkei + 0.79%, NIFTY 50 -1.54% ended the session with mixed returns.

Foreign Exchange Indices (3 months)

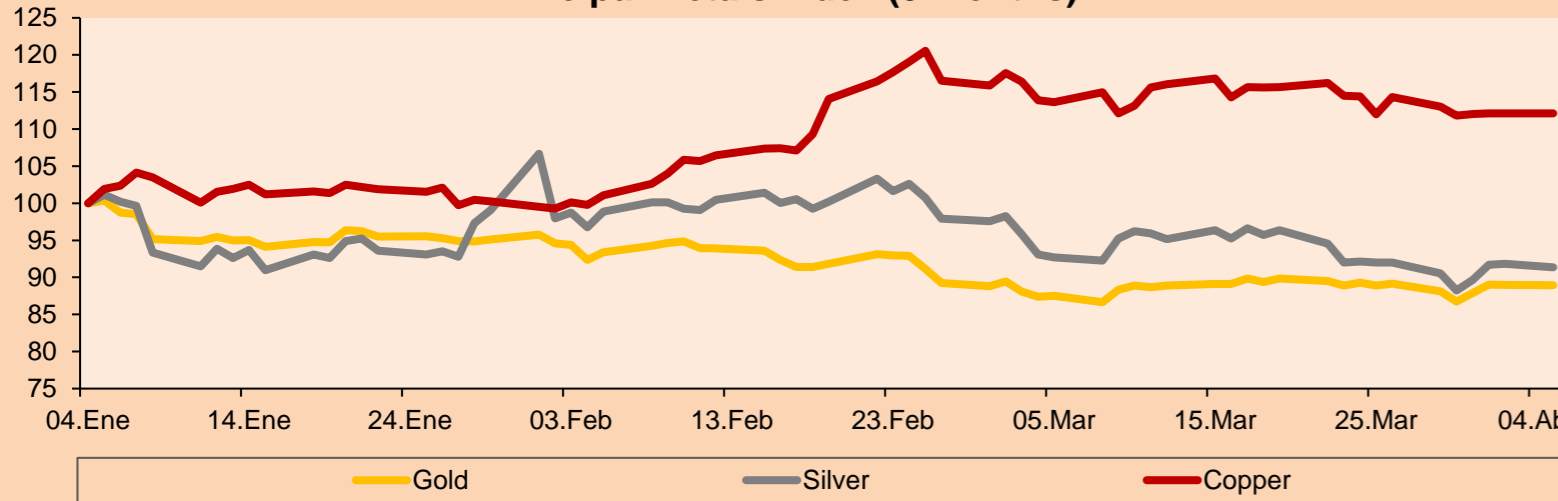


Base: 04/01/21=100
Source: Bloomberg

Commodities	Close	1 D*	5 D*	1 M*	YTD*
▼ Oro (US\$ Oz. T) (LME)	1,728.27	-0.03%	0.94%	1.62%	-8.96%
▼ Plata (US\$ Oz. T) (LME)	24.88	-0.52%	0.91%	-1.45%	-5.77%
- Cobre (US\$ TM) (LME)	8,794.50	0.00%	-0.81%	-1.33%	13.49%
- Zinc (US\$ TM) (LME)	2,757.15	0.00%	-2.08%	0.12%	1.02%
▼ Petróleo WTI (US\$ Barril) (NYM)	58.65	-4.56%	-4.73%	-11.03%	20.46%
- Estaño (US\$ TM) (LME)	26,678.00	0.00%	-2.71%	1.04%	29.85%
- Plomo (US\$ TM) (LME)	1,941.55	0.00%	0.53%	-2.11%	-1.73%
▲ Azúcar #11 (US\$ Libra) (NYB-ICE)	14.84	0.88%	-0.54%	-9.51%	1.09%
▼ Cacao (US\$ TM) (NYB-ICE)	2,364.00	-2.15%	-3.94%	-7.15%	-5.85%
▲ Café Arábica (US\$ TM) (NYB-ICE)	122.10	0.41%	-3.90%	-5.24%	-6.19%

*Leyenda: Variación 1D: 1 Día; 5D: 5 Días; 1M: 1 Mes; YTD: Var.% 31/12/20 a la fecha

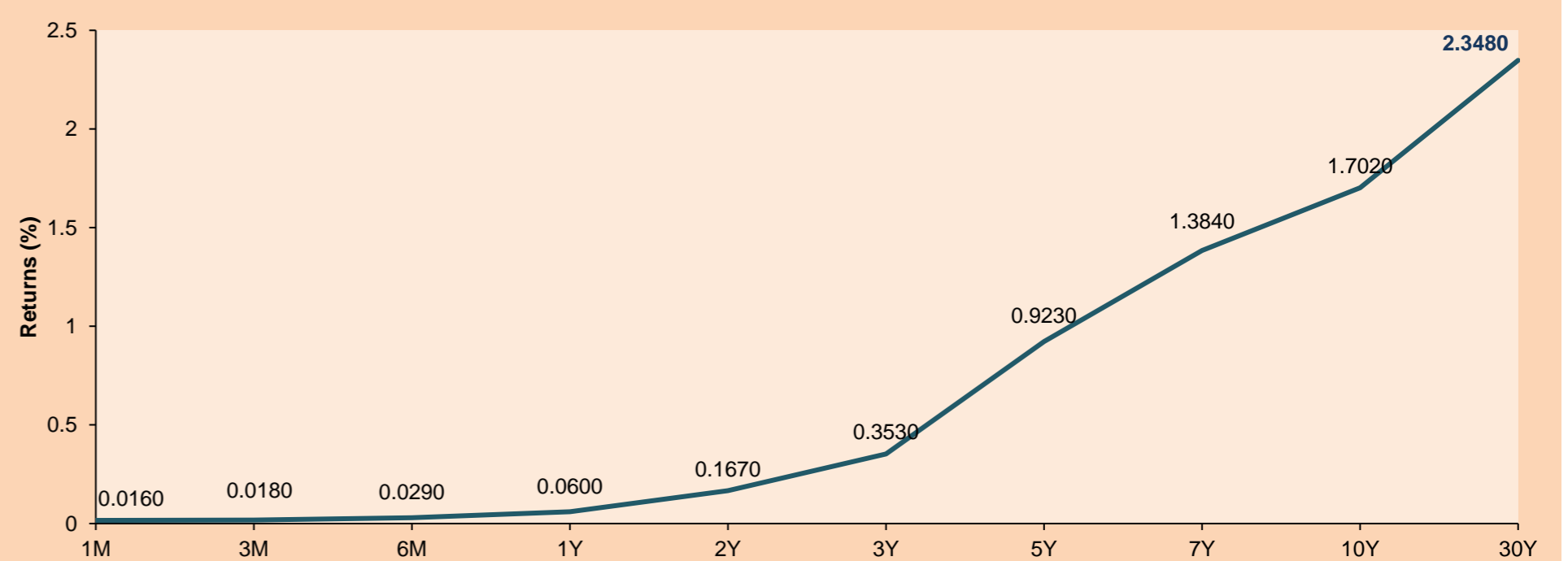
Principal Metals Index (3 months)



Base: 04/01/21=100
Source: Bloomberg

ETFs	Curr.	Close	1D	5D	30 D	YTD	Exchange
SPDR S&P 500 ETF TRUST	USD	406.36	1.44%	2.67%	5.92%	8.69%	NYSE Arca
ISHARES MSCI EMERGING MARKET	USD	54.07	0.39%	2.21%	0.45%	4.64%	NYSE Arca
ISHARES IBOXX HIGH YLD CORP	USD	87.11	0.05%	0.16%	0.57%	-0.22%	NYSE Arca
FINANCIAL SELECT SECTOR SPDR	USD	34.74	0.78%	1.97%	3.06%	17.84%	NYSE Arca
VANECK GOLD MINERS	USD	33.71	0.33%	2.59%	6.07%	-6.41%	NYSE Arca
ISHARES RUSSELL 2000 ETF	USD	224.97	0.55%	4.93%	3.33%	14.75%	NYSE Arca
SPDR GOLD SHARES	USD	161.92	-0.04%	1.00%	1.75%	-9.22%	NYSE Arca
ISHARES 20+ YEAR TREASURY BO	USD	136.91	-0.44%	1.04%	-1.44%	-13.20%	NASDAQ GM
INVESTCO QQ TRUST SERIES 1	USD	331.05	2.00%	4.79%	7.25%	5.52%	NASDAQ GM
ISHARES NASDAQ BIOTECHNOLOGY	USD	152.17	0.43%	3.34%	1.35%	0.45%	NASDAQ GM
ENERGY SELECT SECTOR SPDR	USD	49.11	-2.39%	-1.44%	-7.25%	29.58%	NYSE Arca
PROSHARES ULTRA VIX ST FUTUR	USD	5.14	-4.64%	-15.88%	-41.06%	-51.74%	Cboe BZX
UNITED STATES OIL FUND LP	USD	40.28	-3.73%	-3.91%	-9.36%	22.02%	NYSE Arca
ISHARES MSCI BRAZIL ETF	USD	33.58	2.94%	3.74%	1.79%	-9.41%	NYSE Arca
SPDR S&P OIL & GAS EXP & PR	USD	81.43	-4.83%	0.68%	-9.52%	39.20%	NYSE Arca
UTILITIES SELECT SECTOR SPDR	USD	64.68	1.09%	0.83%	8.38%	3.16%	NYSE Arca
ISHARES US REAL ESTATE ETF	USD	93.95	0.40%	1.69%	8.83%	9.69%	NYSE Arca
SPDR S&P BIOTECH ETF	USD	138.63	1.17%	7.17%	-0.10%	-1.53%	NYSE Arca
ISHARES IBOXX INVESTMENT GRA	USD	129.97	-0.49%	0.51%	0.16%	-5.91%	NYSE Arca
ISHARES JP MORGAN USD EMERGI	USD	109.26	-0.12%	0.52%	0.61%	-5.74%	NASDAQ GM
REAL ESTATE SELECT SECT SPDR	USD	40.33	0.52%	1.28%	9.47%	10.31%	NYSE Arca
ISHARES CHINA LARGE-CAP ETF	USD	47.49	0.08%	2.31%	-2.78%	2.28%	NYSE Arca
CONSUMER STAPLES SPDR	USD	68.85	1.28%	-0.61%	6.41%	2.08%	NYSE Arca
VANECK JR GOLD MINERS	USD	46.72	0.00%	2.52%	2.43%	-13.86%	NYSE Arca
SPDR BBG BARC HIGH YIELD BND	USD	108.74	0.09%	0.12%	0.50%	-0.18%	NYSE Arca
VANGUARD REAL ESTATE ETF	USD	93.89	0.38%	1.72%	8.09%	10.55%	NYSE Arca
GRAYSCALE BITCOIN TRUST BTC	USD	52.95	4.10%	7.08%	20.89%	65.47%	OTC US

USA Treasury Bonds Yield Curve (%)



Source: Bloomberg

LIMA

Stocks

Ticker	Currency	Price	1D*	5D*	30D*	YTD*	Frequency	Volume (US\$)	Beta	Dividend Yield (%)	Price Earning	Market Cap. (M US\$)	Economic Sector*	Index Weight
▼ ALICORC1 PE**	S/.	7.70	-0.37%	-0.62%	-1.17%	-1.38%	100.00%	125,460	0.68	3.25	20.10	1,778.38	Industrial	3.53%
ATACOCB1 PE**	S/.	0.15	0.00%	0.00%	-8.07%	7.25%	61.11%	905	1.09	0.00	-	37.86	Mining	1.02%
▲ BACKUSI1 PE**	S/.	22.70	0.44%	2.25%	-2.37%	12.66%	94.44%	87,756	0.54	1.55	10.89	8,519.38	Industrial	0.82%
▲ BAP PE**	US\$	140.21	2.05%	1.97%	-9.31%	-12.70%	100.00%	1,339,988	1.64	6.28	-	13,233.35	Diverse	5.82%
▲ BVN PE**	US\$	10.05	0.50%	-1.66%	-12.46%	-16.25%	100.00%	126,516	1.17	0.00	-	2,770.13	Mining	5.88%
▲ CASAGRC1 PE**	S/.	6.07	0.17%	1.17%	3.58%	27.79%	83.33%	3,684	0.55	3.72	10.90	138.43	Agricultural	1.31%
- BBVAC1 PE**	S/.	2.42	0.00%	0.00%	0.83%	11.52%	100.00%	229,154	0.66	3.57	25.33	4,277.95	Finance	2.85%
- CORAREI1 PE**	S/.	1.17	0.00%	1.74%	1.74%	31.46%	100.00%	8,230	0.57	5.97	6.98	413.01	Industrial	1.72%
▲ CPACASC1 PE**	S/.	5.87	0.34%	0.00%	-0.84%	10.75%	94.44%	270,823	0.60	3.92	41.93	737.66	Industrial	2.38%
▲ CVERDEC1 PE**	US\$	25.10	0.40%	0.40%	-3.94%	19.98%	100.00%	258,125	0.89	0.00	32.01	8,786.41	Mining	5.25%
▼ ENGEPEC1 PE**	S/.	2.57	-1.15%	-1.15%	-1.15%	28.50%	83.33%	29,406	0.50	8.56	15.71	1,975.25	Public Services	1.44%
- ENDISPC1**	S/.	6.05	0.00%	0.00%	2.54%	12.04%	50.00%	3,276	0.48	0.00	14.19	1,045.98	Public Services	0.98%
▼ FERREYC1 PE**	S/.	2.20	-0.90%	1.38%	2.80%	26.44%	100.00%	35,348	0.58	3.48	14.63	581.16	Diverse	4.90%
- AENZAC1 PE**	S/.	1.80	0.00%	1.12%	2.86%	3.45%	94.44%	157,077	0.81	0.00	-	424.92	Diverse	4.05%
▲ IFS PE**	US\$	30.85	2.15%	6.38%	-1.44%	-0.29%	100.00%	235,524	1.26	5.67	34.30	3,561.56	Diverse	7.22%
- INRETC1 PE**	US\$	42.30	0.00%	-1.63%	-6.21%	7.91%	100.00%	58,012	0.64	1.33	53.04	4,348.75	Diverse	5.28%
▲ LUSURC1 PE**	S/.	14.75	1.03%	5.36%	-32.95%	-42.16%	100.00%	172,282	0.53	4.73	14.85	1,944.64	Public Services	1.81%
▲ MINSURI1 PE**	S/.	2.83	2.91%	3.28%	-2.41%	52.97%	94.44%	394,112	0.79	0.00	75.71	2,208.99	Mining	3.09%
- PML PE**	US\$	0.15	0.00%	2.67%	6.94%	45.28%	61.11%	40,757	1.45	0.00	-	40.69	Mining	2.12%
▲ RELAPAC1 PE**	S/.	0.13	1.55%	0.00%	2.34%	89.86%	94.44%	42,234	0.48	0.00	-	295.06	Industrial	2.12%
▲ SCCO PE**	US\$	71.77	4.74%	5.51%	-0.32%	8.91%	88.89%	125,794	0.96	2.37	33.36	55,483.47	Mining	2.14%
▲ SIDERC1 PE**	S/.	1.11	1.83%	0.91%	8.82%	30.59%	88.89%	48,050	0.80	24.95	13.19	369.02	Industrial	1.43%
- TV PE**	US\$	0.15	0.00%	2.00%	9.29%	4.08%	94.44%	23,815	1.47	0.00	-	151.33	Mining	2.93%
▲ UNACEMC1 PE**	S/.	1.73	0.58%	4.22%	-2.26%	11.61%	94.44%	40,560	0.82	0.75	37.90	851.59	Industrial	3.00%
▼ VOLCABC1 PE**	S/.	0.82	-2.38%	-5.75%	0.00%	57.69%	100.00%	157,412	0.87	0.00	-	905.05	Mining	5.90%
▲ NEXAPEC1 PE**	S/.	3.44	0.29%	1.18%	-11.79%	21.55%	77.78%	4,101	1.12	0.00	-	1,231.55	Mining	1.56%

Quantity of shares: 26

Source: Bloomberg, Economática

* Bloomberg Industry Classification System

** PER is used in the stock market and original currency of the instrument

*Legend: Variation 1D: 1 Day; 5D: 5 Days, 1M: 1 Month; YTD: Var.% 12/31/20 to date

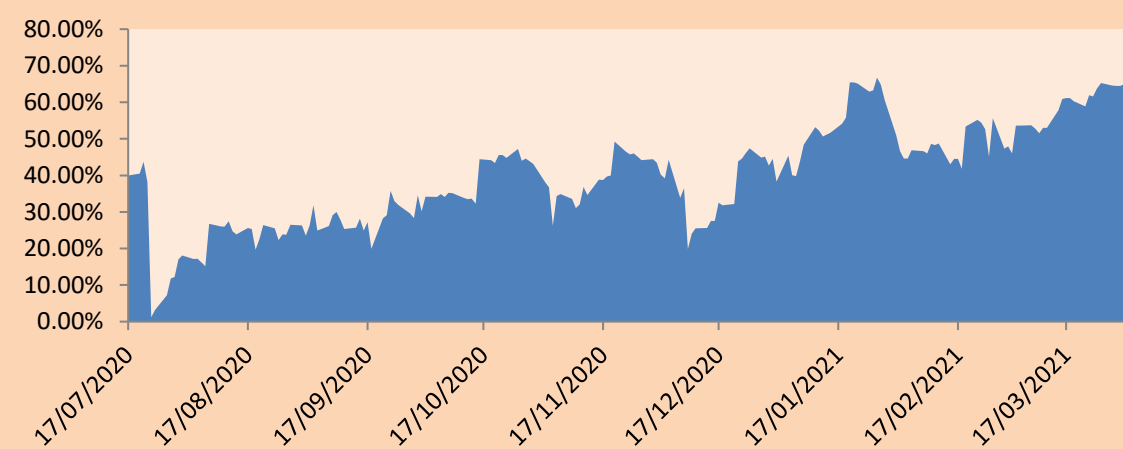
Sectorial Indices

	Close	1D*	5D*	30D*	YTD*	Beta
▲ S&P/BVLMining	421.82	1.66%	1.29%	-3.65%	8.17%	0.94
▼ S&P/BVLConsumer	1,195.47	-0.33%	-1.26%	-5.47%	9.82%	0.41
▼ S&P/BVLIndustrials	220.20	-0.05%	1.53%	0.81%	15.55%	0.49
▲ S&P/BVLFinancials	941.58	0.60%	0.78%	-8.09%	-8.93%	1.77
▲ S&P/BVLConstruction	231.11	0.32%	1.62%	-0.10%	10.52%	0.53
▼ S&P/BVLPublicSvcs	656.40	-0.38%	-0.38%	1.83%	6.89%	0.13
▼ S&P/BVLElectricUtil	640.81	-0.38%	-0.38%	1.83%	6.89%	0.13

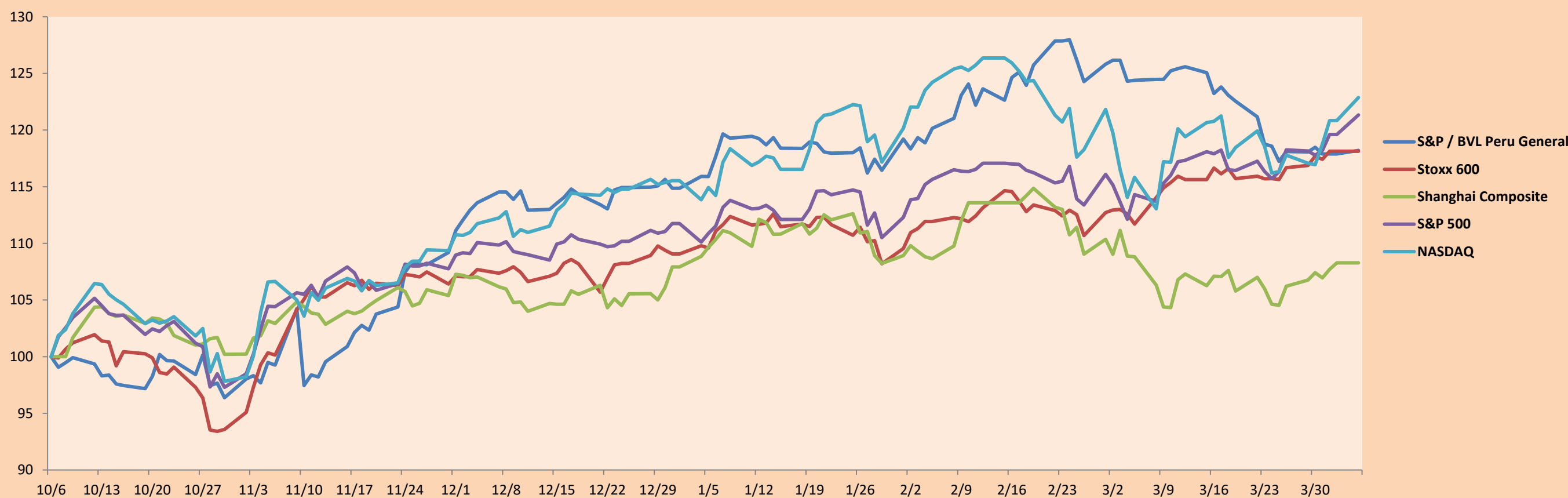
S&P/BVLConstructionTRPEN

*Legend: Variation 1D: 1 Day; 5D: 5 Days, 1M: 1 Month; YTD: Var.% 12/31/20 to date

Correlation Graph of Returns of Mining Index against Metallic Index of London (3 months)



Indices (6 months)



Base: 06/10/20=100
Source: Bloomberg

Capital Market Laboratory Coordinator: Economist Bruno Bellido
Collaboration: : Maria Camarena, Alonso García, Adrian Paredes y Jairo Valverde
email: pulsohorsatil@ulima.edu.pe
facebook: www.facebook.com/pulsohorsatil.ul

SOVEREIGN RATING

RISK RATINGS

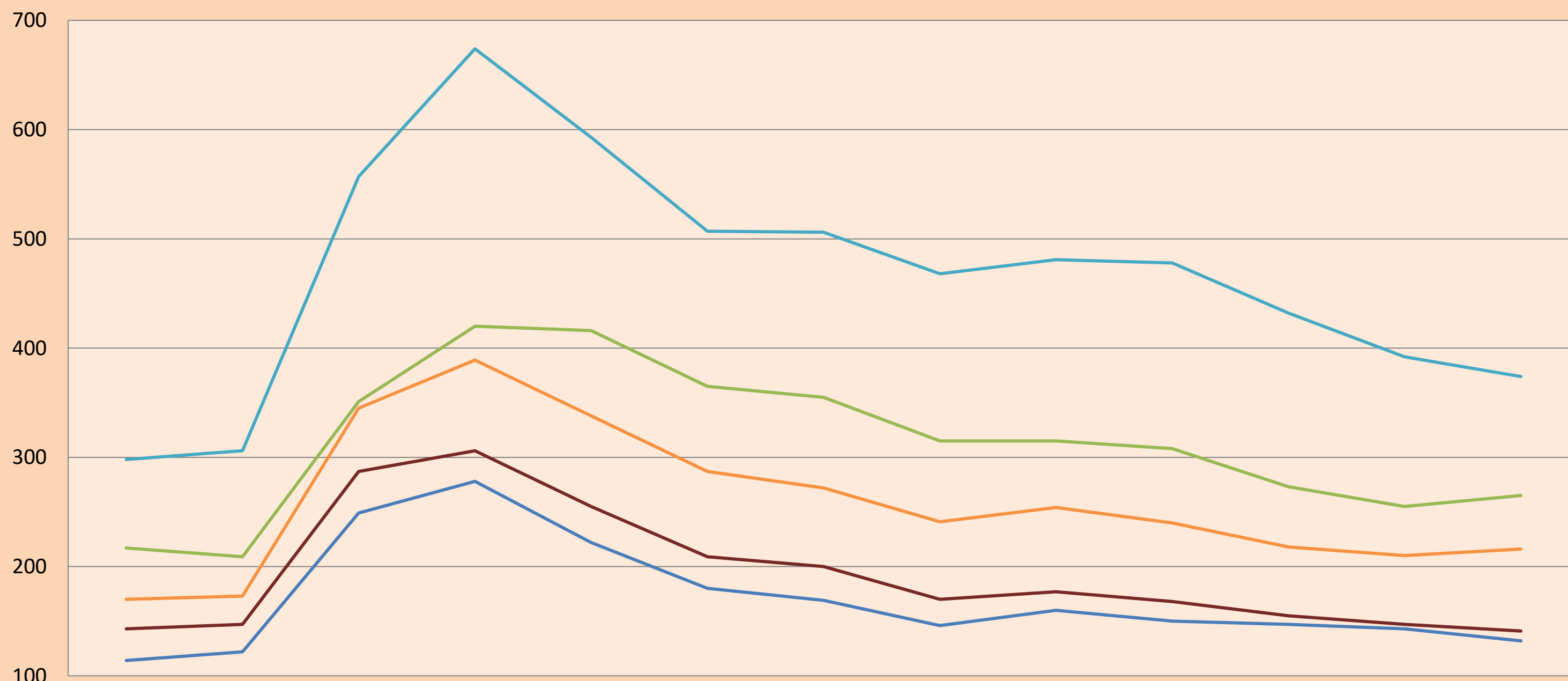
Moody's	S&P	Fitch	
Aaa	AAA	AAA	Prime
Aa1	AA+	AA+	High credit quality
Aa2	AA	AA	
Aa3	AA-	AA-	
A1	A+	A+	Medium-high grade, with low credit risk
A2	A	A	
A3	A-	A-	
Baa1	BBB+	BBB+	Moderate Credit Risk
Baa2	BBB	BBB	
Baa3	BBB-	BBB-	
Ba1	BB+	BB+	It has speculative elements and it is subject to substantial credit risk
Ba2	BB	BB	
Ba3	BB-	BB-	
B1	B+	B+	It is considered speculative and it has high credit risk
B2	B	B	
B3	B-	B-	
Caa1	CCC+	CCC	Bad credit conditions and it is subject to high credit risk
Caa2	CCC		
Caa3	CCC-		
Ca	CC	DDD	Very close to default or in default
	C		
C	D		

Source: Bloomberg

Latin America Credit Rating			
Clasificadora de riesgo			
Country	Moody's	Fitch	S&P
Peru	A3	BBB+	BBB+
México	Ba2	BB-	BB-
Venezuela	C	WD	SD
Brazil	Ba2	BB-	BB-
Colombia	Baa2	BBB-	BBB-
Chile	A1	A-	A
Argentine	Ca	WD	CCC+
Panama	Baa2	BBB-	BBB

Source: Bloomberg

LATAM Country Risk (bps)



	Ene-20	Feb-20	Mar-20	Abr-20	May-20	Jun-20	Jul-20	Ago-20	Set-20	Oct-20	Nov-20	Dic-20	Ene-21
Perú	114	122	249	278	222	180	169	146	160	150	147	143	132
Brasil	217	209	351	420	416	365	355	315	315	308	273	255	265
México	298	306	557	674	593	507	506	468	481	478	432	392	374
Colombia	170	173	345	389	338	287	272	241	254	240	218	210	216
Chile	143	147	287	306	255	209	200	170	177	168	155	147	141

Source: BCRP

Capital Market Laboratory Coordinator: Economist Bruno Bellido
Collaboration: : María Camarena, Alonso García, Adrian Paredes y Jairo Valverde
email: pulsobursatil@ulima.edu.pe
facebook: www.facebook.com/pulsobursatil.ul