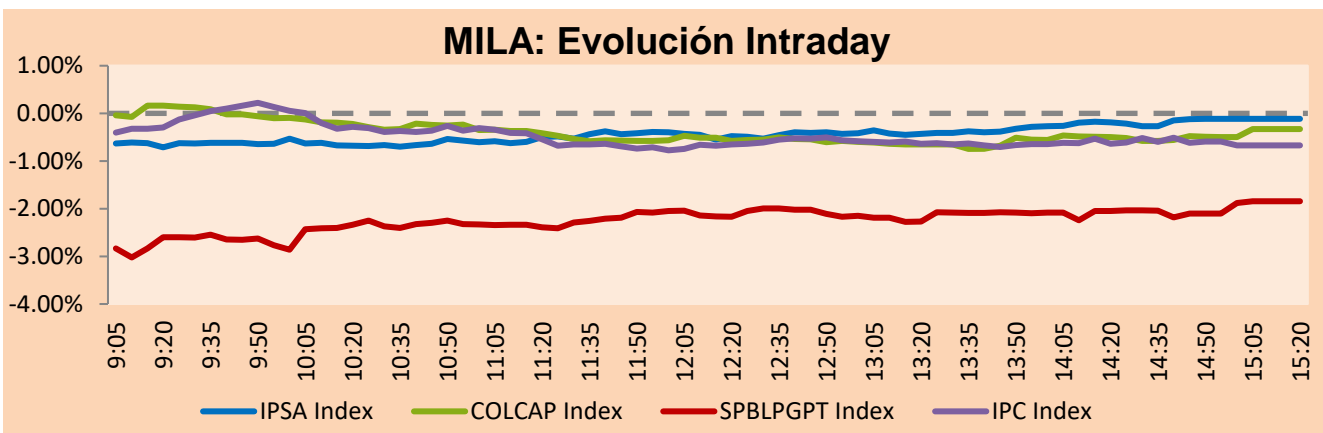


## MILA

Lima, April 12, 2021

Main Indexes	Close	1 D	5 D	1 M	YTD	Cap. Burs. (US\$ bill)
▼ IPSA (Chile)	4,950.06	-0.16%	1.62%	1.16%	18.50%	137.95
▼ IGPA (Chile)	24,946.70	-0.21%	1.44%	1.31%	18.75%	165.57
▼ COLSC (Colombia)	1,019.77	-0.92%	-2.35%	-3.18%	-3.70%	5.20
▼ COLCAP (Colombia)	1,317.76	-0.33%	-0.47%	-2.65%	-8.35%	77.88
▼ S&P/BVL (Perú)*	21,315.22	-1.84%	-0.54%	-6.38%	2.37%	108.85
▼ S&P/BVL SEL (Perú)	562.78	-1.78%	-1.64%	-7.31%	2.06%	96.33
▼ S&P/BVL LIMA 25	28,422.88	-2.08%	-1.19%	-4.51%	12.80%	107.82
▼ IPC (México)	47,352.18	-0.58%	-1.85%	-0.87%	7.46%	296.48
▼ S&P MILA 40	556.01	-0.71%	1.64%	-1.80%	4.00%	5,973.01

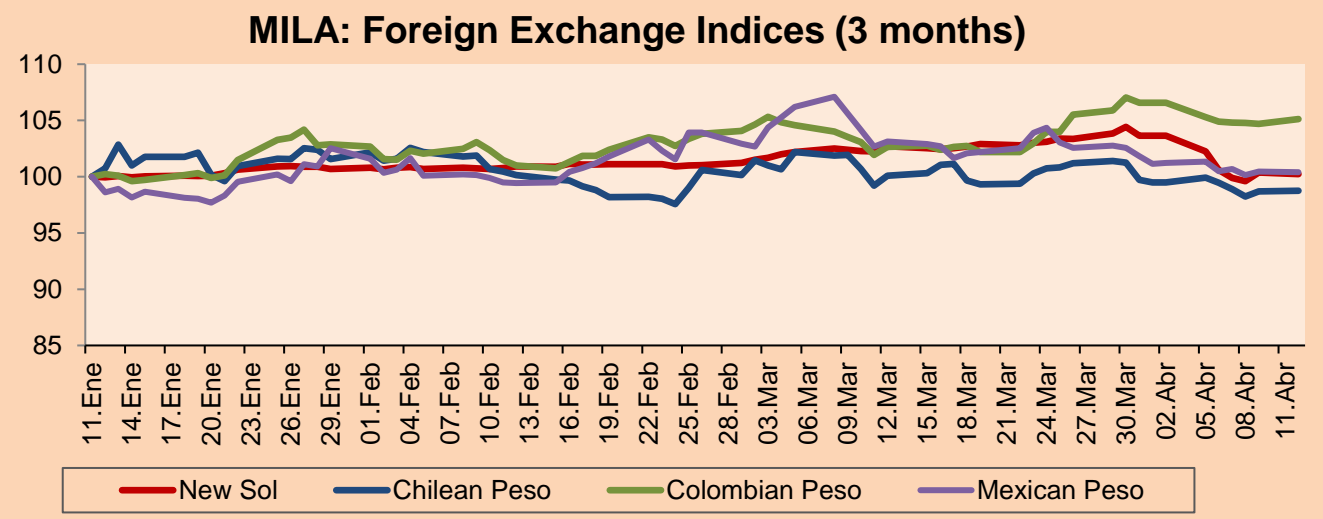
\*Legend: Variation 1D: 1 day; 5D: 5 days; 1M: 1 Month; YTD: Var% 12/31/20 to date



Source: Bloomberg

Currency	Price	1D*	5D*	30 D*	YTD*
▼ Sol (PEN)	3,6199	-0.15%	-1.99%	-2.43%	0.05%
▲ Chilean Peso (CLP)	712.10	0.06%	-1.18%	-1.34%	0.04%
▲ Colombian Peso (COP)	3,653.54	0.40%	-0.18%	2.39%	6.53%
▼ Mexican Peso (MXN)	20.15	-0.07%	-0.94%	-2.64%	1.16%

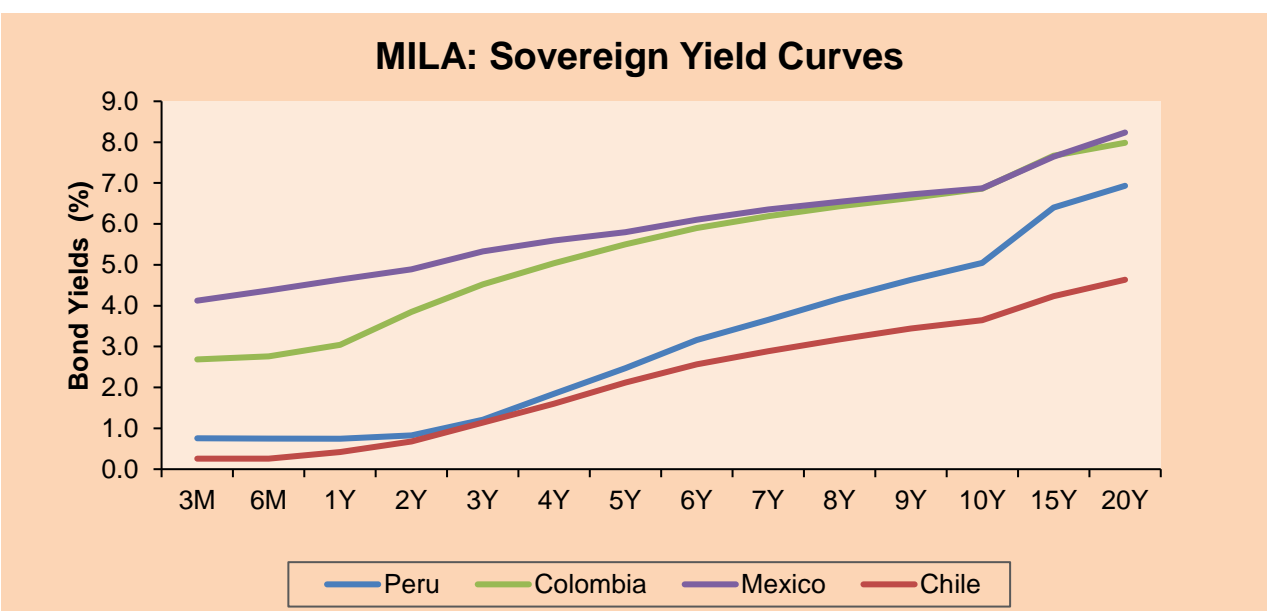
\*Legend: Variation 1D: 1 day; 5D: 5 days; 1M: 1 Month; YTD: Var% 12/31/20 to date



Base: 11/01/21=100

Source: Bloomberg

Fixed Income	Currency	Price	Bid Yield (%)	Ask Yield (%)	Duration
PERU 7.35 07/21/25	USD	123.816	1.61	1.51	3.74
PERU 4.125 08/25/27	USD	111.799	2.17	2.10	5.69
PERU 8.75 11/21/33	USD	155.985	3.31	3.26	8.68
PERU 6.55 03/14/37	USD	135.839	3.60	3.56	10.51
PERU 5.625 11/18/2050	USD	133.466	3.77	3.72	16.36
CHILE 2.25 10/30/22	USD	102.741	0.58	0.35	1.51
CHILE 3.125 01/21/26	USD	108.162	1.40	1.31	4.46
CHILE 3.625 10/30/42	USD	105.689	3.27	3.24	15.29
COLOM 11.85 03/09/28	USD	158.753	2.67	2.37	5.30
COLOM 10.375 01/28/33	USD	153.85	4.56	4.36	7.84
COLOM 7.375 09/18/37	USD	133.618	4.50	4.43	10.62
COLOM 6.125 01/18/41	USD	120.425	4.58	4.52	12.30
MEX 4 10/02/23	USD	120.425	4.578	4.515	12.3
MEX5.55 01/45	USD	116.076	4.47	4.43	14.03



Source: Bloomberg

### Equity

Largest gains	Exchange	Currency	Price	▲%	Largest losses	Exchange	Currency	Price	▼%
GRUPO CARSO-A1	Mexico	MXN	59.42	3.54	VOLCAN CIA MIN-B	Peru	PEN	0.79	-5.95
INFRAESTRUCTURA	Mexico	MXN	82.96	2.78	AERO DEL PACIF-B	Mexico	MXN	212.26	-3.87
CONCHATORO	Chile	CLP	1390.00	2.28	AERO DEL SURES-B	Mexico	MXN	355.68	-3.84
FALABELLA SA	Chile	CLP	3500.00	1.74	GRUPO AEROPORTU	Mexico	MXN	129.29	-3.46
CENCOSUD SA	Chile	CLP	1625.00	1.57	CREDICORP LTD	Peru	USD	147.06	-2.09

Per Turnover	Exchange	Amount (US\$)	Per Volume	Exchange	Volume
WALMART DE MEXIC	Mexico	38,588,220	BANCO SANTANDER	Chile	116,593,386
GRUPO F BANORT-O	Mexico	31,947,315	ITAU CORPBANCA	Chile	98,342,442
INFRAESTRUCTURA	Mexico	22,334,316	BANCO DE CHILE	Chile	43,151,889
AMERICA MOVIL-L	Mexico	21,596,276	ENEL CHILE SA	Chile	35,043,340
GRUPO MEXICO-B	Mexico	20,838,451	ENEL AMERICAS SA	Chile	31,360,373

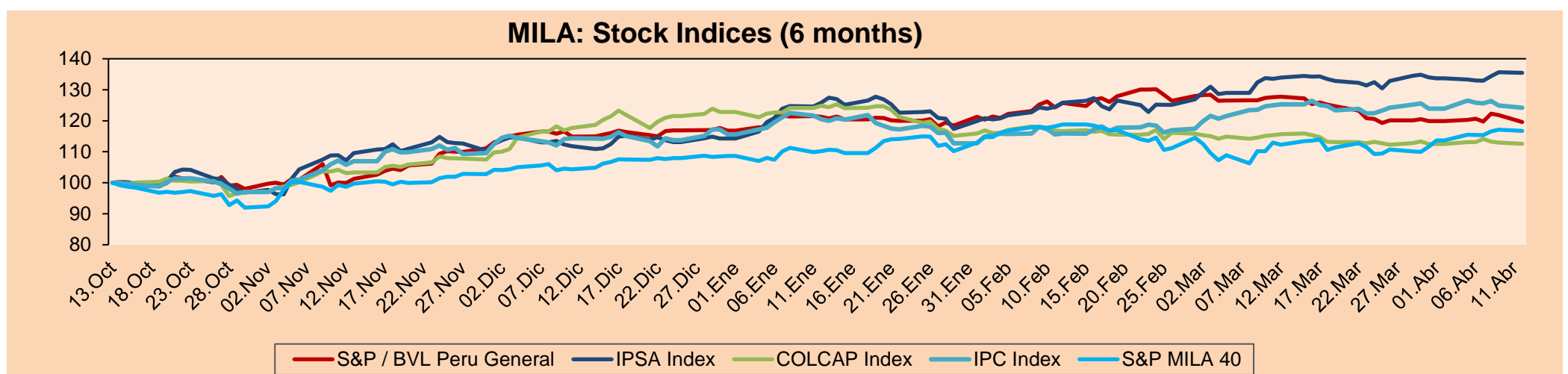
### MILA

Peru: The General Index of BVL ended today's session with a negative result of -1.84%. The index maintains a positive annual cumulative trend of +2.37% in local currency, while the dollar-adjusted performance amounted to +2.31%. Then, the S&P / BVL Peru SEL varied by -1.78% while the S&P / BVL LIMA 25 by -2.08%. The spot PEN reached 5/3.6199. Headline: Quick count: Castillo leads and there is a dispute for the second place

Chile: The IPSA index ended the day with a negative return of -0.16%. The most damaged sectors of the day were Real Estate (-1.88%) and Industrials (-1.58%). The worst performing stocks were Grupo Security SA (-2.05%) and Cencosud Shopping SA (-2.00%). Headline: Third withdrawal: authors of the initiative point out that it may be possible to materialize despite the fact that the government does not support it

Colombia: The COLCAP index closed today with a negative return of -0.33%. The most negatively affected sectors of the day were Non Basic Consumer Products (-1.39%) and Financials (-1.16%). The worst performing stocks were Mineros SA (-2.75%) and BanColombia SA (-2.51%). Headline: General Budget would be more austere for 2022

Mexico: The IPC index closed the day with a negative return of -0.58%. The sectors that lost the most during the day were Industrials (-2.46%) and Materials (-0.94%). The worst performing stocks were Grupo Aeroportuario del Pacifico (-3.87%) and Grupo Aeroportuario del Sureste (-3.84%). Headline: Basic food basket rose 6.2% in March, with a price increase of 15.2% at annual rate.

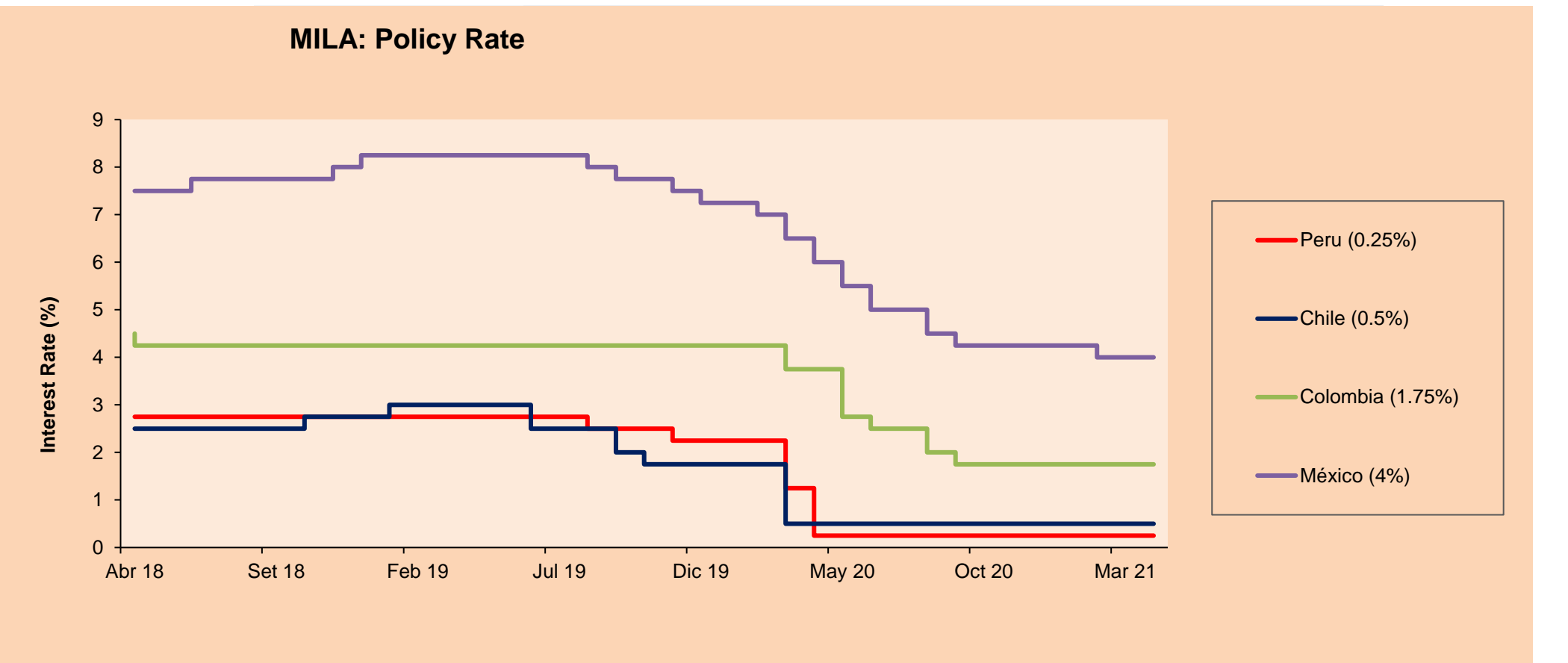


Base: 14/10/20=100

Source: Bloomberg

### ETFs

ETFs	Curr.	Close	1D	5D	30 D	YTD	Exchange
▼ iShares MSCI All Peru Caped Index Fund	USD	35.717	-1.45%	2.34%	-3.13%	2.99%	NYSE Arca
▼ iShares MSCI All Chile Caped Index Fund	USD	34.84	-0.54%	2.05%	2.29%	15.33%	Cboe BZX
▼ Global X MSCI Colombia	USD	10.234	-0.93%	0.19%	-3.54%	-9.91%	NYSE Arca
▼ iShares MSCI Mexico Capped	USD	44.96	-0.38%	-0.60%	2.58%	4.58%	NYSE Arca
▼ iShares MSCI Emerging Markets	USD	53.23	-0.60%	-1.55%	-1.41%	3.02%	NYSE Arca
▼ Vanguard FTSE Emerging Markets	USD	51.86	-0.65%	-1.46%	-1.91%	3.49%	NYSE Arca
▼ iShares Core MSCI Emerging Markets	USD	64.35	-0.62%	-1.38%	-1.11%	3.72%	NYSE Arca
▼ iShares JP Morgan Emerging Markets Bonds	USD	62.87	-0.49%	-0.87%	-0.04%	2.93%	Cboe BZX
▼ Morgan Stanley Emerging Markets Domestic	USD	5.99	-0.17%	-0.33%	1.01%	-4.77%	New York



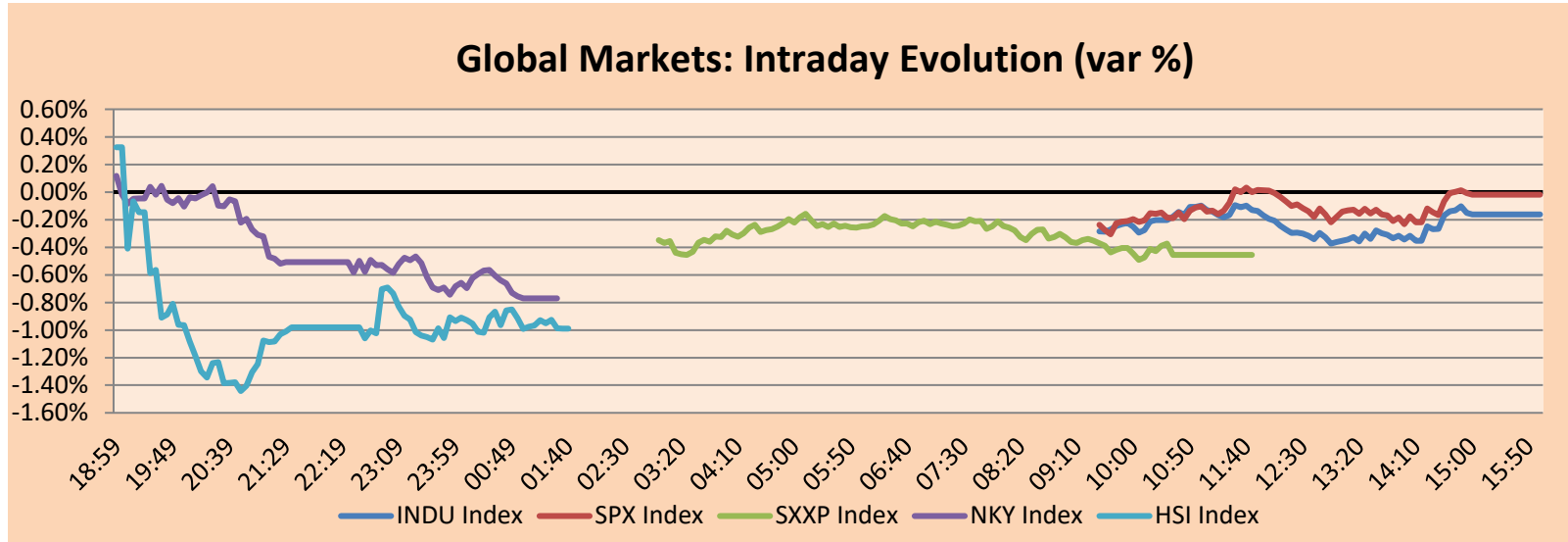
Source: Bloomberg



## WORLD

Main Indices	Close	1 D*	5 D*	1 M*	YTD*	Market Cap. (US\$ Mill.)
▼ Dow Jones (USA)	33,745.40	-0.16%	0.65%	2.95%	10.26%	10,250,068
▼ Standard & Poor's 500 (EEUU)	4,127.99	-0.02%	1.23%	4.68%	9.90%	36,510,550
▼ NASDAQ Composite (USA)	13,850.00	-0.36%	1.05%	3.98%	7.46%	22,649,299
▼ Stoxx EUROPE 600 (Europe)	435.24	-0.46%	0.70%	3.12%	9.34%	10,038,887
▼ DAX (Germany)	15,215.00	-0.13%	0.71%	5.17%	11.18%	1,160,508
▼ FTSE 100 (United Kingdom)	6,889.12	-0.39%	2.25%	1.76%	6.51%	1,448,642
▼ CAC 40 (France)	6,161.68	-0.13%	0.96%	2.21%	11.32%	1,692,201
▼ IBEX 35 (Spain)	8,532.60	-0.39%	-0.52%	-1.16%	5.82%	475,908
▼ MSCI AC Asia Pacific Index	205.38	-0.53%	-0.84%	-1.16%	2.73%	25,762,271
▼ HANG SENG (Hong kong)	28,453.28	-0.86%	0.26%	-0.84%	4.65%	4,343,578
▼ SHANGHAI SE Comp. (China)	3,412.95	-1.09%	-2.05%	-1.64%	-2.21%	6,430,153
▼ NIKKEI 225 (Japan)	29,538.73	-0.77%	-1.83%	0.11%	8.41%	3,994,008
▼ S&P / ASX 200 (Australia)	6,973.96	-0.30%	2.13%	3.11%	5.92%	1,694,160
▼ KOSPI (South Korea)	3,135.59	-0.58%	-1.85%	3.75%	10.29%	1,864,524

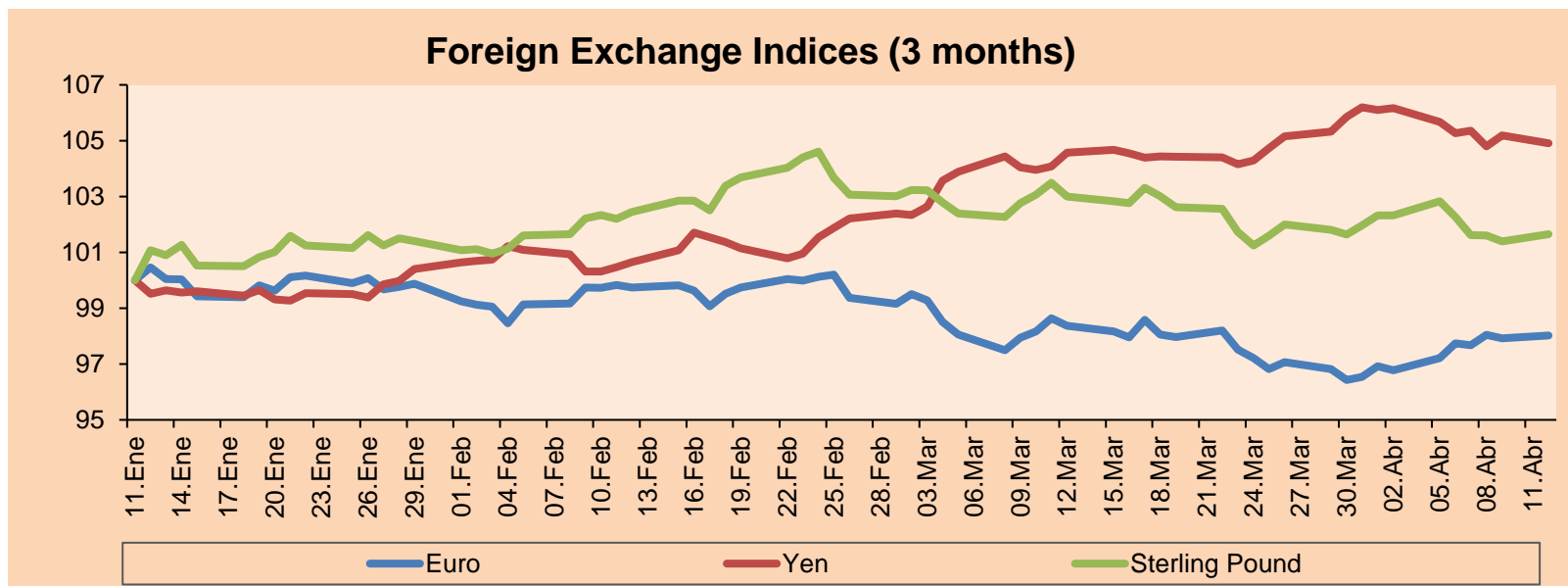
\*Legend: Variation 1D: 1 Day; 5D: 5 Days; 1M: 1 Month; YTD: Var.% 12/31/20 to date



Source: Bloomberg

Currency	Price	1 D*	5 D*	1 M*	YTD*
▲ Euro	1.1911	0.10%	0.83%	-0.35%	-2.50%
▼ Yen	109.3800	-0.26%	-0.73%	0.32%	5.94%
▲ Sterling Pound	1.3741	0.25%	-1.14%	-1.31%	0.52%
▲ Yuan	6.5483	-0.07%	-0.28%	0.61%	0.32%
▼ Hong Kong Dollar	7.7738	-0.05%	-0.03%	0.14%	0.27%
▲ Brazilian Real	5.7349	0.89%	1.22%	3.22%	10.32%
▲ Argentine Peso	92.5759	0.15%	0.45%	1.89%	10.02%

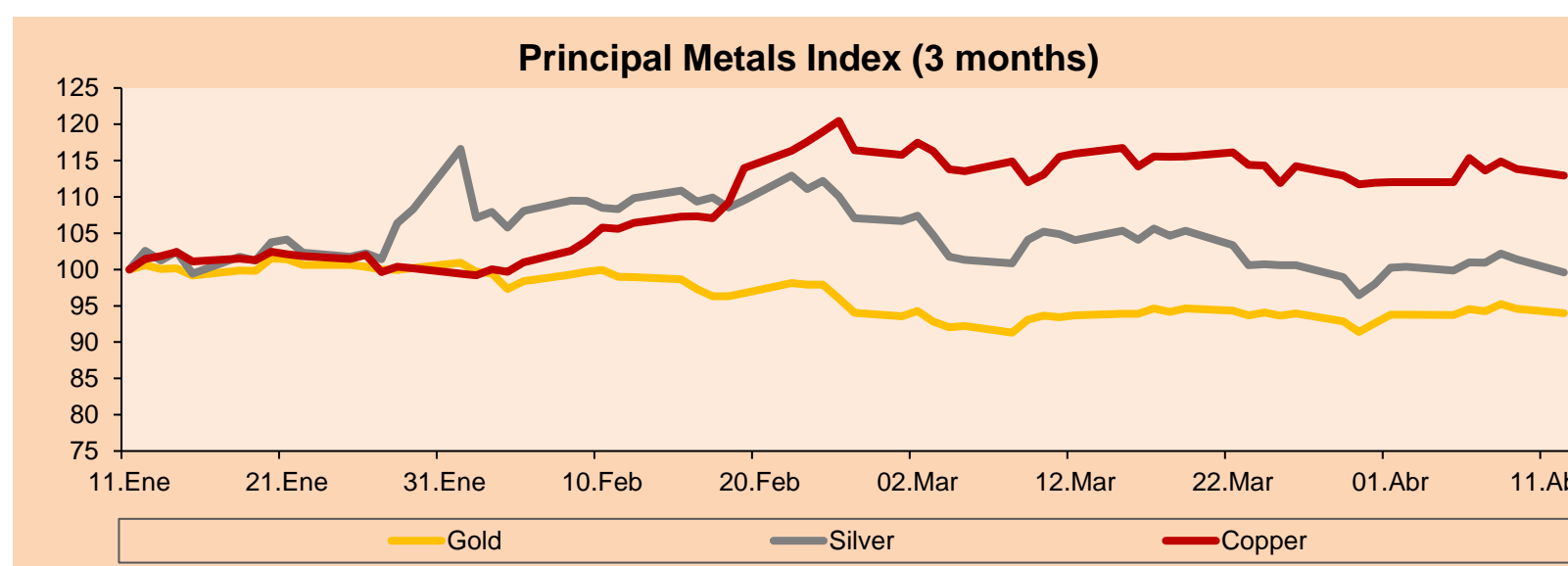
\*Legend: Variation 1D: 1 Day; 5D: 5 Days; 1M: 1 Month; YTD: Var.% 12/31/20 to date



Base: 11/01/21=100  
Source: Bloomberg

Commodities	Close	1 D*	5 D*	1 M*	YTD*
▼ Oro (US\$ Oz. T) (LME)	1,732.76	-0.64%	0.26%	0.33%	-8.72%
▼ Plata (US\$ Oz. T) (LME)	24.82	-1.78%	-0.25%	-4.25%	-6.01%
▼ Cobre (US\$ TM) (LME)	8,864.25	-0.79%	0.79%	-2.63%	14.39%
▼ Zinc (US\$ TM) (LME)	2,734.45	-2.62%	-0.82%	-1.72%	0.19%
▲ Petróleo WTI (US\$ Barril) (NYM)	59.70	0.64%	1.79%	-9.05%	22.61%
▲ Estaño (US\$ TM) (LME)	27,158.00	-1.68%	1.80%	-3.87%	32.19%
▼ Plomo (US\$ TM) (LME)	1,954.35	-0.10%	0.66%	0.93%	-1.08%
▲ Azúcar #11 (US\$ Libra) (NYB-ICE)	15.36	-0.32%	4.21%	-2.29%	8.25%
▲ Cacao (US\$ TM) (NYB-ICE)	2,401.00	0.59%	1.57%	-7.08%	-4.38%
▲ Café Arábica (US\$ TM) (NYB-ICE)	130.00	0.66%	4.80%	-3.67%	-1.40%

\*Leyenda: Variación 1D: 1 Día; 5D: 5 Días; 1M: 1 Mes; YTD: Var.% 31/12/20 a la fecha



Base: 11/01/21=100  
Source: Bloomberg

## Equity

Germany (Stocks from DAX Index)

Largest gains	Curr.	Price	▲ %	Exchange	Largest losses	Curr.	Price	▼ %	Exchange
EOAN GY	EUR	10.032	1.32	Xetra	MTX GY	EUR	199.15	-1.65	Xetra
BMW GY	EUR	88.95	1.08	Xetra	IFX GY	EUR	35.18	-1.18	Xetra
1COV GY	EUR	56.42	0.97	Xetra	MRK GY	EUR	146.7	-1.05	Xetra
DPW GY	EUR	48.485	0.91	Xetra	SAP GY	EUR	111.24	-0.94	Xetra

Europe (Stocks from STOXX EUROPE 600)

Largest gains	Curr.	Price	▲ %	Exchange	Largest losses	Curr.	Price	▼ %	Exchange
DIA IM	EUR	153.05	9.63	Borsa Italiana	VVS DC	DKK	1200.2	-4.35	Copenhagen
SEV FP	EUR	19.865	7.73	EN Paris	TUI LN	GBp	372.1	-4.34	Londres
LLOY LN	GBp	44.39	2.62	Londres	HUSQB SS	SEK	124.45	-4.16	Stockholm
SAGAB SS	SEK	205	2.55	Stockholm	SKI FP	EUR	144.5	-4.05	EN Paris

## Global Overview:

### United States:

The American market closed lower due to investors being cautious; since, they are waiting for the earnings reports from the beginning of the year; as well as, if the impact of the inflation report will only have a transitory effect on prices. In addition, initially the energy and finance sectors outperformed the market, however, these sectors have lost momentum being again outperformed by information technology. Despite these results, companies like Tesla + 3.69% had growth because analysts increased the target price and Uber + 3.05% shows a strong rise after having reported the highest number of registered reservations in the history of the company. On the other hand, the technology industry competes to enter the health sector, and in this case, Microsoft acquired the voice recognition company Nuance for 19.7 billion dollars. Finally, Nvidia + 5.62% enters the artificial intelligence industry through the presentation of its first ARM architecture chip for data centres, a market where currently companies such as IBM -0.84%, Intel -4.18% or AMD -5.05% bet on the development of neural networks as the new paradigm of companies that are dedicated to data analysis. In this way DOW JONES -0.16%, S&P 500 -0.02% and NASDAQ -0.36%.

### Europe:

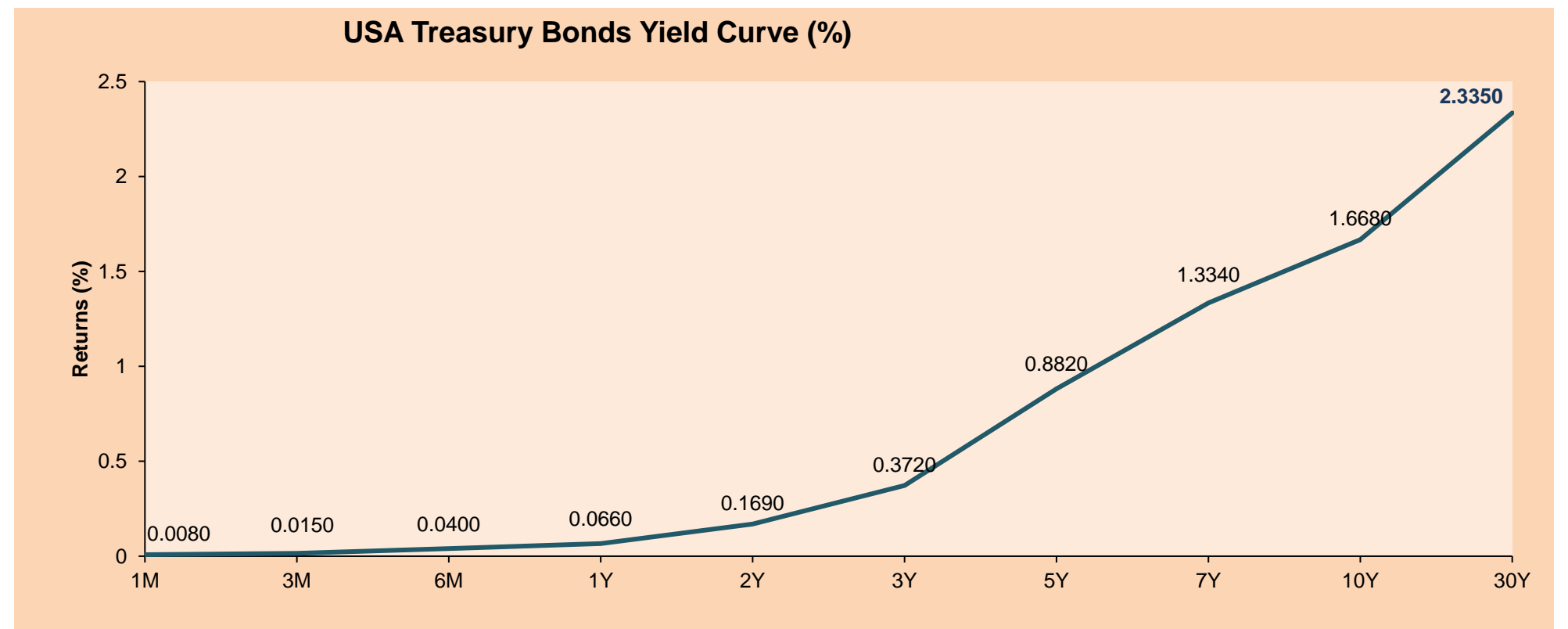
Major European markets ended the day lower amid massive profit-taking ahead of the quarterly corporate reporting season. In economic data, Eurozone retail sales in February came in at 3% above expectations. Thus, the Stoxx 600 closed lower arrested with the Information Technology -1.28% and Industrials -0.89% after closing at record highs on Friday. Analysts remain on expectations of a 47.4% increase in first-quarter earnings for STOXX 600 companies, according to Refinitiv. Elsewhere, in the UK, the government began easing closure measures by allowing restaurants, pubs and non-essential stores to reopen. However, this was not reflected in the FTSE 100, which closed with losses. Finally, the German index closed lower as it prepares for new legislation that would allow the country to impose restrictions without the approval of the regional government. Thus, STOXX 600 -0.46%, FTSE 100 -0.39%, CAC 40 -0.13%, DAX -0.13% closed lower.

### Asia:

The main Asian indexes ended today's session with negative returns, due to the fall of different sectors of the economy, disappointment of business economic data and the elimination of vaccination targets. Shares in China fell, weighed down by the materials -3.9% and transportation -4.1% sectors, on concerns over political tightening. On the other hand, the Hong Kong index fell, due to the fall of the technology sector -1.87% and of necessities -1.55%. In Japan, stocks closed lower, dragged down by heavy losses from Yaskawa Electric after they failed to meet market expectations, prompting a selloff in other tech stocks. South Korean Stocks Raise on battery makers profits and strong hopes for a US recovery, although gains were limited due to pending US earnings and inflation data. Finally, Australia's index falls after the government abandoned its COVID19 vaccination targets due to a change in stance on the AstraZeneca vaccine. Thus, NIKKEI -0.77%, CSI 300 -1.74%, Shanghai Comp -1.09%, KOSPI +0.12% and S&P / ASX 200 -0.3% ended the day mostly lower.

## ETFs

	Curr.	Close	1D	5D	30 D	YTD	Exchange
SPDR S&P 500 ETF TRUST	USD	411.64	0.04%	1.30%	4.46%	10.10%	NYSE Arca
ISHARES MSCI EMERGING MARKET	USD	53.23	-0.60%	-1.55%	-1.41%	3.02%	NYSE Arca
ISHARES IBOXX HIGH YLD CORP	USD	87.11	-0.10%	0.00%	0.75%	-0.22%	NYSE Arca
FINANCIAL SELECT SECTOR SPDR	USD	35.30	0.43%	1.61%	1.52%	19.74%	NYSE Arca
VANECK GOLD MINERS	USD	33.96	-2.22%	0.74%	2.66%	-5.72%	NYSE Arca
ISHARES RUSSELL 2000 ETF	USD	221.72	-0.39%	-1.44%	-5.08%	13.09%	NYSE Arca
SPDR GOLD SHARES	USD	162.28	-0.61%	0.22%	0.49%	-9.02%	NYSE Arca
ISHARES 20+ YEAR TREASURY BO	USD	137.45	-0.04%	0.39%	1.02%	-12.86%	NASDAQ GM
INVESTCO QQQ TRUST SERIES 1	USD	336.67	-0.13%	1.70%	6.72%	7.31%	NASDAQ GM
ISHARES NASDAQ BIOTECHNOLOGY	USD	146.50	-1.50%	-3.73%	-5.33%	-3.29%	NASDAQ GM
ENERGY SELECT SECTOR SPDR	USD	47.81	-0.79%	-2.65%	-10.75%	26.15%	NYSE Arca
PROSHARES ULTRA VIX ST FUTUR	USD	4.77	-1.65%	-7.20%	-38.37%	-55.21%	Cboe BZX
UNITED STATES OIL FUND LP	USD	40.90	0.64%	1.54%	-7.78%	23.90%	NYSE Arca
ISHARES MSCI BRAZIL ETF	USD	33.52	-0.12%	-0.18%	0.69%	-9.58%	NYSE Arca
SPDR S&P OIL & GAS EXP & PR	USD	76.59	-2.42%	-5.94%	-15.31%	30.92%	NYSE Arca
UTILITIES SELECT SECTOR SPDR	USD	64.88	0.09%	0.31%	3.96%	3.48%	NYSE Arca
ISHARES US REAL ESTATE ETF	USD	94.47	0.54%	0.55%	3.96%	10.30%	NYSE Arca
SPDR S&P BIOTECH ETF	USD	127.05	-1.99%	-8.35%	-13.28%	-9.75%	NYSE Arca
ISHARES IBOXX INVESTMENT GRA	USD	130.76	-0.02%	0.61%	1.59%	-5.34%	NYSE Arca
ISHARES JP MORGAN USD EMERGI	USD	109.76	0.16%	0.46%	1.20%	-5.31%	NASDAQ GM
REAL ESTATE SELECT SECT SPDR	USD	40.58	0.59%	0.62%	3.97%	11.00%	NYSE Arca
ISHARES CHINA LARGE-CAP ETF	USD	46.47	-0.13%	-2.15%	-3.39%	0.09%	NYSE Arca
CONSUMER STAPLES SPDR	USD	69.29	0.54%	0.64%	4.75%	2.73%	NYSE Arca
VANECK JR GOLD MINERS	USD	47.36	-2.65%	1.37%	0.55%	-12.68%	NYSE Arca
SPDR BBG BARC HIGH YIELD BND	USD	108.80	-0.08%	0.06%	0.73%	-0.13%	NYSE Arca
VANGUARD REAL ESTATE ETF	USD	94.29	0.59%	0.43%	2.91%	11.02%	NYSE Arca
GRAYSCALE BITCOIN TRUST BTC	USD	51.78	4.29%	-2.21%	3.56%	61.81%	OTC US



Source: Bloomberg



# LIMA

## Stocks

Ticker	Currency	Price	1D*	5D*	30D*	YTD*	Frequency	Volume (US\$)	Beta	Dividend Yield (%)	Price Earning	Market Cap. (M US\$)	Economic Sector*	Index Weight
▼ ALICORC1 PE**	S/.	7.60	-0.92%	-2.35%	-3.18%	-3.70%	100.00%	169,746	0.68	3.29	19.84	1,791.13	Industrial	3.53%
▲ ATACOB1 PE**	S/.	0.15	1.35%	1.35%	-6.25%	8.70%	44.44%	3,729	1.09	0.00	-	39.15	Mining	1.02%
▼ BACKUS1 PE**	S/.	22.53	-4.13%	-0.75%	-3.10%	11.81%	94.44%	24,539	0.55	1.56	10.81	8,665.85	Industrial	0.82%
▼ BAP PE**	US\$	147.06	-2.09%	4.89%	-2.71%	-8.43%	100.00%	2,949,544	1.64	5.99	-	13,879.86	Diverse	5.82%
▼ BVN PE**	US\$	10.47	-1.87%	4.18%	-8.96%	-12.75%	100.00%	199,346	1.17	0.00	-	2,885.89	Mining	5.88%
- CASAGRC1 PE**	S/.	6.30	0.00%	3.79%	6.78%	32.63%	94.44%	2,048	0.56	3.59	11.31	146.60	Agricultural	1.31%
▲ BBVAC1 PE**	S/.	2.45	0.82%	1.24%	2.08%	12.90%	100.00%	249,859	0.64	3.52	25.64	4,419.03	Finance	2.85%
▼ CORARE1 PE**	S/.	1.19	-4.03%	1.71%	4.39%	33.71%	94.44%	58,385	0.61	5.87	7.10	422.52	Industrial	1.72%
▼ CPACASC1 PE**	S/.	5.72	-0.35%	-2.56%	-4.19%	7.92%	88.89%	38,864	0.58	4.02	40.86	733.42	Industrial	2.38%
▼ CVERDEC1 PE**	US\$	24.00	-5.88%	-4.38%	-7.69%	14.72%	100.00%	814,428	0.95	0.00	30.60	8,401.34	Mining	5.25%
- ENGEPEC1 PE**	S/.	2.51	0.00%	-2.33%	-6.34%	25.50%	88.89%	4,123	0.49	8.76	15.34	1,968.36	Public Services	1.44%
▼ ENDISPC1**	S/.	6.00	-1.64%	-0.83%	0.00%	11.11%	55.56%	5,718	0.48	0.00	14.07	1,058.42	Public Services	0.98%
▼ FERREYC1 PE**	S/.	2.15	-0.46%	-2.27%	-1.38%	23.56%	100.00%	142,119	0.58	3.56	14.30	579.50	Diverse	4.90%
- AENZAC1 PE**	S/.	1.75	0.00%	-2.78%	0.00%	0.57%	83.33%	456	0.81	0.00	-	421.52	Diverse	4.05%
▼ IFS PE**	US\$	31.40	-0.32%	1.78%	0.61%	1.49%	100.00%	1,503,277	1.25	5.57	34.24	3,625.06	Diverse	7.22%
▼ INRETC1 PE**	US\$	40.70	-1.45%	-3.78%	-9.56%	3.83%	100.00%	248,026	0.63	1.39	50.05	4,184.26	Diverse	5.28%
▼ LUSURC1 PE**	S/.	14.00	-3.51%	-5.08%	-6.23%	-45.10%	100.00%	37,128	0.60	4.99	14.10	1,883.29	Public Services	1.81%
▼ MINSUR1 PE**	S/.	2.82	-3.42%	-0.35%	-1.05%	52.43%	94.44%	43,210	0.80	0.00	76.93	2,245.94	Mining	3.09%
▼ PML PE**	US\$	0.16	-1.81%	5.84%	13.19%	53.77%	72.22%	14,181	1.46	0.00	-	43.06	Mining	2.12%
▼ RELAPAC1 PE**	S/.	0.13	-3.85%	-4.58%	-5.30%	81.16%	94.44%	21,184	0.50	0.00	-	287.27	Industrial	2.12%
▼ SCCO PE**	US\$	70.30	-0.59%	-2.05%	-9.37%	6.68%	94.44%	119,325	0.96	2.42	32.68	54,347.05	Mining	2.14%
▼ SIDERC1 PE**	S/.	1.13	-2.59%	1.80%	10.78%	32.94%	88.89%	203,817	0.81	24.50	9.04	383.31	Industrial	1.43%
▼ TV PE**	US\$	0.16	-3.07%	3.27%	6.76%	7.48%	94.44%	252,472	1.48	0.00	-	156.28	Mining	2.93%
▼ UNACEMC1 PE**	S/.	1.67	-4.57%	-3.47%	-9.24%	7.74%	94.44%	127,011	0.84	0.78	36.58	838.77	Industrial	3.00%
▼ VOLCABC1 PE**	S/.	0.79	-5.95%	-3.66%	-7.06%	51.92%	100.00%	839,767	0.88	0.00	-	889.66	Mining	5.90%
- NEXAPEC1 PE**	S/.	3.43	0.00%	-0.29%	-10.91%	21.20%	66.67%	8,120	1.12	0.00	-	1,252.97	Mining	1.56%

Quantity of shares: 26  
Source: Bloomberg, Economática  
\* Bloomberg Industry Classification System  
\*\* PER is used in the stock market and original currency of the instrument  
\*Legend: Variation 1D: 1 Day; 5D: 5 Days, 1M: 1 Month; YTD: Var.% 12/31/20 to date

Up 2  
Down 20  
Hold 4

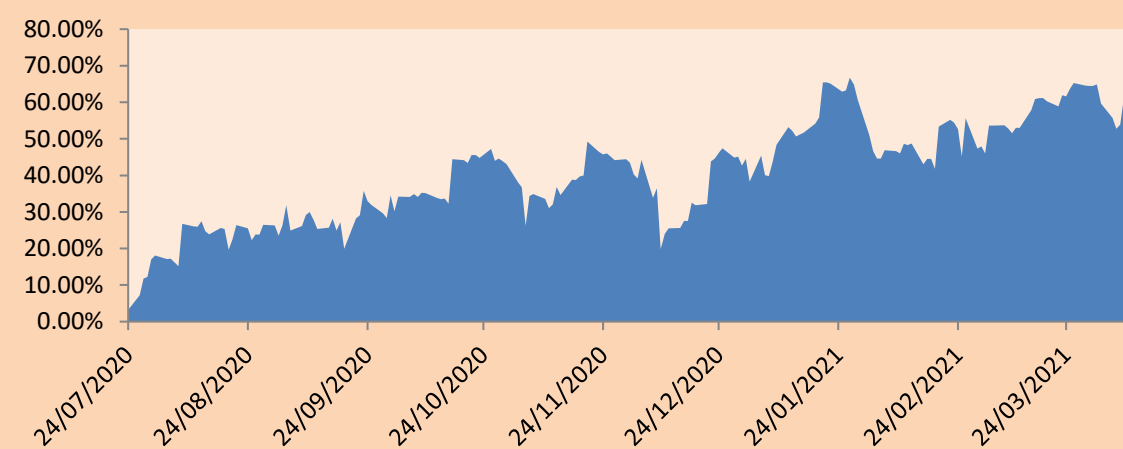
### Sectorial Indices

	Close	1D*	5D*	30D*	YTD*	Beta
▼ S&P/BVLMining	411.77	-1.66%	-2.38%	-10.51%	5.60%	0.95
▼ S&P/BVLConsumer	1,158.45	-1.91%	-3.10%	-7.86%	6.41%	0.41
▼ S&P/BVLIndustrials	215.00	-1.44%	-2.36%	-3.38%	12.83%	0.50
▼ S&P/BVLFinancials	964.86	-1.86%	2.47%	-4.40%	-6.68%	1.75
▼ S&P/BVLConstruction	225.65	-1.84%	-2.36%	-4.22%	7.90%	0.54
▼ S&P/BVLPublicSvcs	646.54	-0.51%	-1.50%	-1.28%	5.28%	0.13
▼ S&P/BVLElectricUtil	631.18	-0.51%	-1.50%	-1.28%	5.28%	0.13

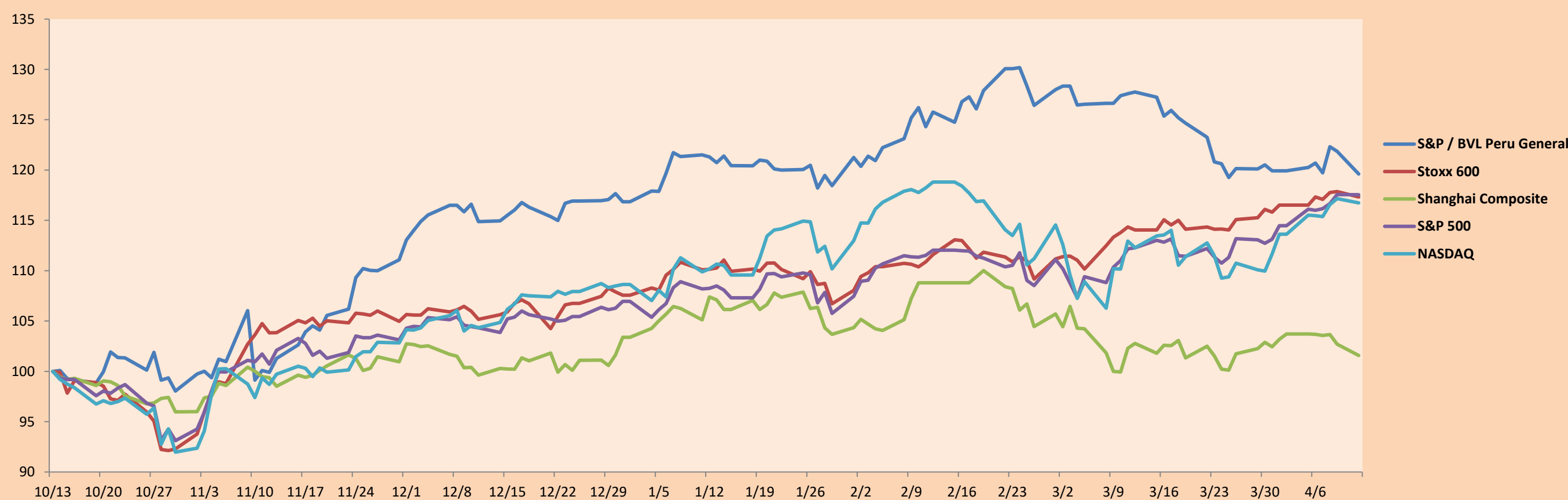
S&P/BVLConstructionTRPEN

\*Legend: Variation 1D: 1 Day; 5D: 5 Days, 1M: 1 Month; YTD: Var.% 12/31/20 to date

Correlation Graph of Returns of Mining Index against Metallic Index of London (3 months)



Indices (6 months)



Base: 13/10/20=100  
Source: Bloomberg

Capital Market Laboratory Coordinator: Economist Bruno Bellido  
Collaboration: María Camarena, Alonso García, Adrian Paredes y Jairo Valverde  
email: pulsobursatil@ulima.edu.pe  
facebook: www.facebook.com/pulsobursatil.ul

## SOVEREIGN RATING

### RISK RATINGS

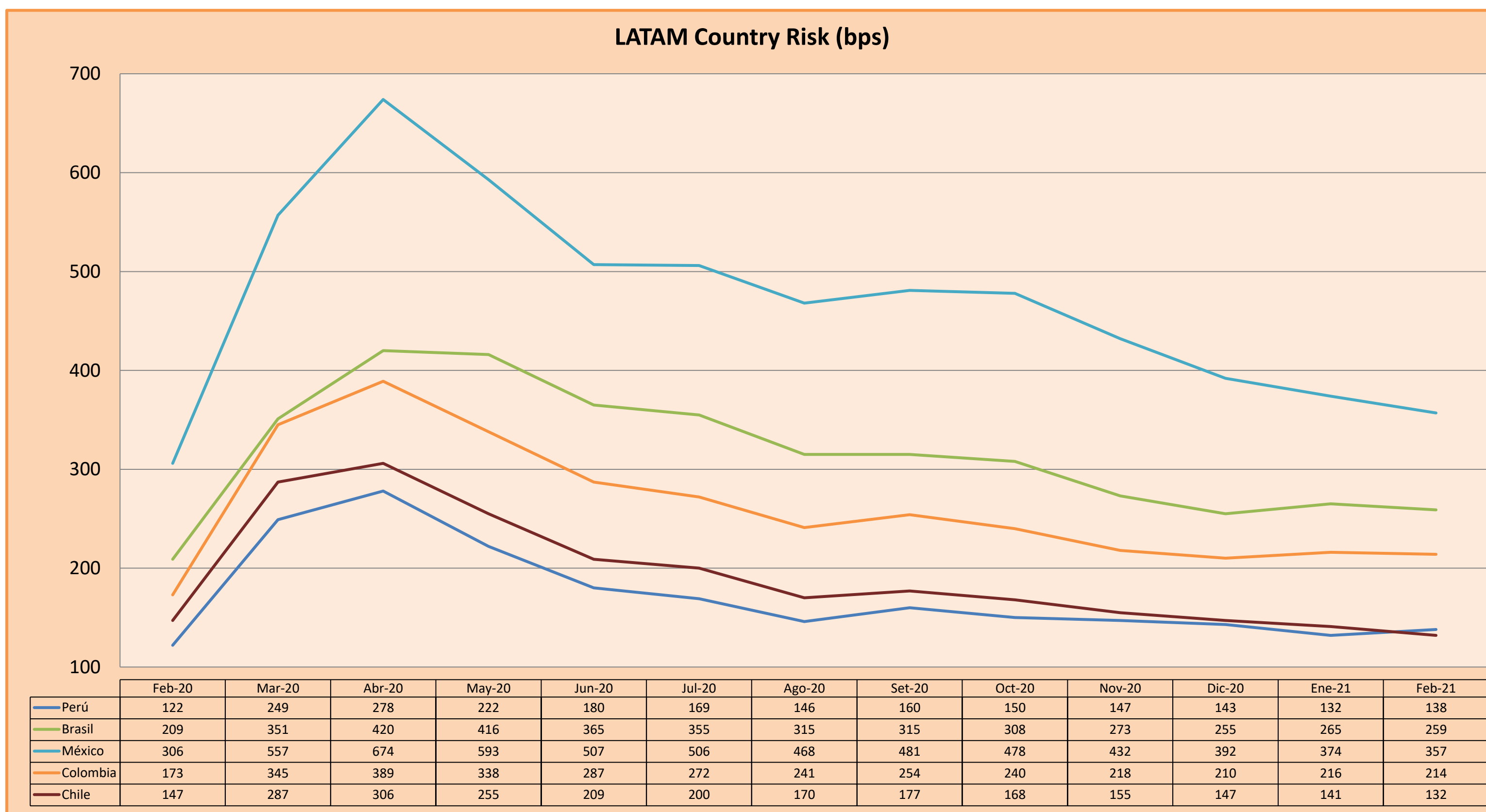
Moody's	S&P	Fitch	
Aaa	AAA	AAA	Prime
Aa1	AA+	AA+	High credit quality
Aa2	AA	AA	
Aa3	AA-	AA-	
A1	A+	A+	Medium-high grade, with low credit risk
A2	A	A	
A3	A-	A-	
Baa1	BBB+	BBB+	Moderate Credit Risk
Baa2	BBB	BBB	
Baa3	BBB-	BBB-	
Ba1	BB+	BB+	It has speculative elements and it is subject to substantial credit risk
Ba2	BB	BB	
Ba3	BB-	BB-	
B1	B+	B+	It is considered speculative and it has high credit risk
B2	B	B	
B3	B-	B-	
Caa1	CCC+	CCC	Bad credit conditions and it is subject to high credit risk
Caa2	CCC		
Caa3	CCC-		
Ca	CC	DDD	Very close to default or in default
	C		
C	D		

Source: Bloomberg

Latin America Credit Rating			
Clasificadora de riesgo			
Country	Moody's	Fitch	S&P
Peru	A3	BBB+	BBB+
México	Ba2	BB-	BB-
Venezuela	C	WD	SD
Brazil	Ba2	BB-	BB-
Colombia	Baa2	BBB-	BBB-
Chile	A1	A-	A
Argentine	Ca	WD	CCC+
Panama	Baa2	BBB-	BBB

Source: Bloomberg

### LATAM Country Risk (bps)



Source: BCRP

Capital Market Laboratory Coordinator: Economist Bruno Bellido  
Collaboration: Maria Camarena, Alonso García, Adrian Paredes y Jairo Valverde  
email: pulsobursatil@ulima.edu.pe  
facebook: www.facebook.com/pulsobursatil.ul