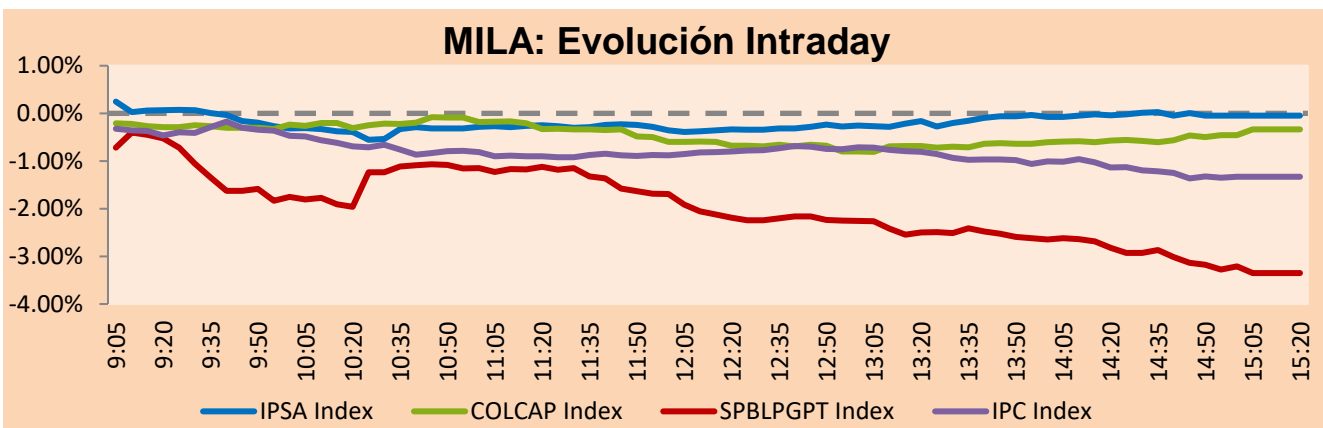


MILA

Lima, April 19, 2021

Main Indexes	Close	1 D	5 D	1 M	YTD	Cap. Burs. (US\$ bill)
▼ IPSA (Chile)	4,970.29	-0.36%	0.41%	2.38%	18.99%	144.50
▼ IGPA (Chile)	25,095.75	-0.23%	0.60%	2.53%	19.46%	173.95
▲ COLSC (Colombia)	1,024.41	0.11%	0.46%	-1.88%	-3.27%	5.21
▼ COLCAP (Colombia)	1,312.62	-0.34%	-0.39%	-0.90%	-8.71%	78.77
▼ S&P/BVL (Perú)*	20,483.68	-3.35%	-3.90%	-7.79%	-1.63%	107.71
▼ S&P/BVL SEL (Perú)	542.90	-4.13%	-3.53%	-7.79%	-1.54%	95.69
▼ S&P/BVL LIMA 25	26,791.74	-5.19%	-5.74%	-8.97%	6.32%	106.71
▼ IPC (México)	48,072.62	-1.34%	1.52%	2.22%	9.09%	303.65
▼ S&P MILA 40	561.54	-0.77%	1.00%	0.08%	5.03%	6,017.58

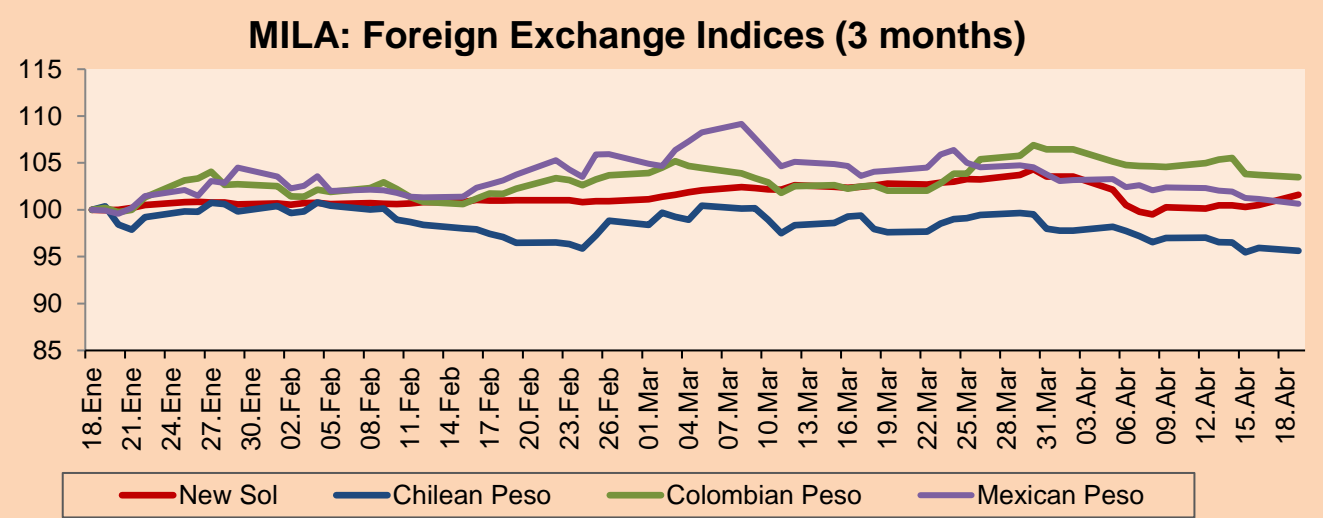
*Legend: Variation 1D: 1 day; 5D: 5 days; 1M: 1 Month; YTD: Var% 12/31/20 to date



Source: Bloomberg

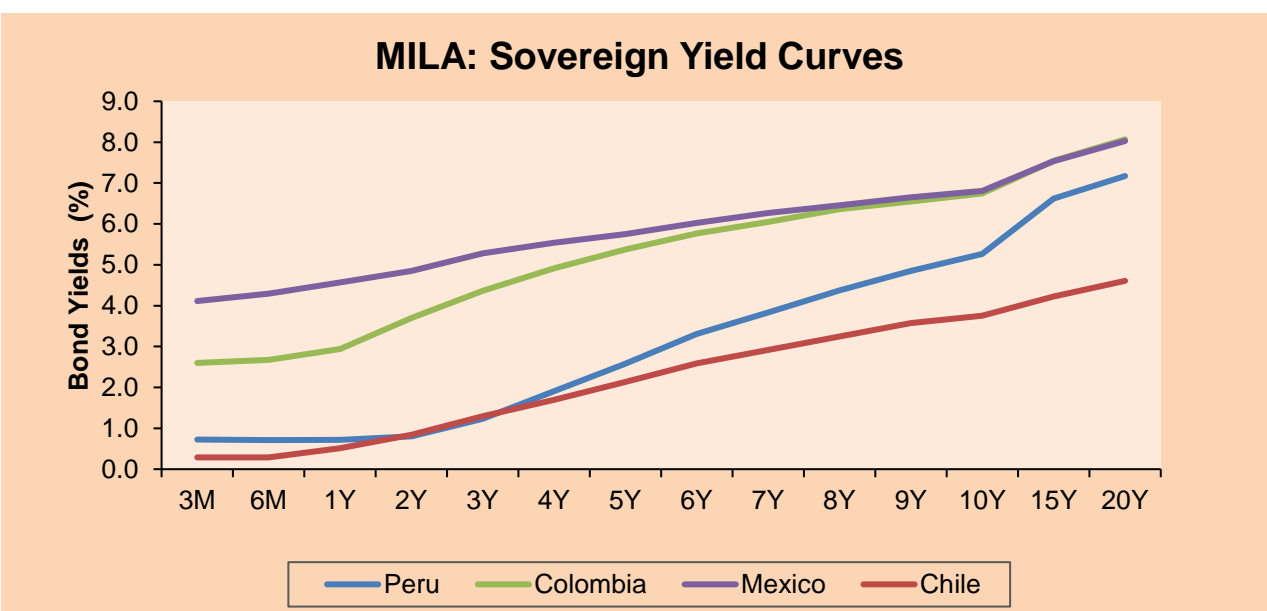
Currency	Price	1D*	5D*	30 D*	YTD*
▲ Sol (PEN)	3,6734	1.10%	1.48%	-1.17%	1.53%
▼ Chilean Peso (CLP)	701.65	-0.34%	-1.47%	-2.05%	-1.42%
▼ Colombian Peso (COP)	3,602.02	-0.21%	-1.41%	1.42%	5.02%
▼ Mexican Peso (MXN)	19.82	-0.51%	-1.63%	-3.36%	-0.49%

*Legend: Variation 1D: 1 day; 5D: 5 days; 1M: 1 Month; YTD: Var% 12/31/20 to date



Base: 18/01/21=100
Source: Bloomberg

Fixed Income	Currency	Price	Bid Yield (%)	Ask Yield (%)	Duration
PERU 7.35 07/21/25	USD	123.672	1.61	1.53	3.72
PERU 4.125 08/25/27	USD	111.675	2.18	2.11	5.67
PERU 8.75 11/21/33	USD	156.131	3.31	3.24	8.66
PERU 6.55 03/14/37	USD	136.286	3.57	3.52	10.50
PERU 5.625 11/18/2050	USD	133.84	3.74	3.72	16.37
CHILE 2.25 10/30/22	USD	102.773	0.55	0.30	1.49
CHILE 3.125 01/21/26	USD	108.362	1.35	1.25	4.44
CHILE 3.625 10/30/42	USD	107.093	3.19	3.15	15.33
COLOM 11.85 03/09/28	USD	159.54	2.55	2.28	5.29
COLOM 10.375 01/28/33	USD	154.125	4.53	4.32	7.82
COLOM 7.375 09/18/37	USD	134.554	4.44	4.36	10.63
COLOM 6.125 01/18/41	USD	121.133	4.52	4.48	12.31
MEX 4 10/02/23	USD	121.133	4.518	4.478	12.31
MEX5.55 01/45	USD	117.62	4.38	4.33	14.09



Source: Bloomberg

Equity

Largest gains	Exchange	Currency	Price	▲%	Largest losses	Exchange	Currency	Price	▼%
CAP	Chile	CLP	14600.00	4.38	VOLCAN CIA MIN-B	Peru	PEN	0.76	-11.63
CEMENTOS ARGOS	Colombia	COP	5390.00	3.06	ALICORP-C	Peru	PEN	7.15	-6.41
GRUPO TELEV-CPO	Mexico	MXN	53.46	2.59	FERREYCORP SAA	Peru	PEN	1.99	-6.13
ENEL CHILE SA	Chile	CLP	56.70	1.07	GRUPO CARSO-A1	Mexico	MXN	58.37	-4.55
BUENAVENTURA-ADR	Peru	USD	10.46	1.06	ENEL AMERICAS SA	Chile	CLP	108	-4.42

Per Turnover	Exchange	Amount (US\$)	Per Volume	Exchange	Volume
ENEL AMERICAS SA	Chile	55,290,815	ITAU CORPBANCA	Chile	999,539,380
GRUPO F BANORT-O	Mexico	37,637,312	ENEL AMERICAS SA	Chile	355,748,485
WALMART DE MEXIC	Mexico	35,109,822	BANCO DE CHILE	Chile	251,692,649
BANCO DE CHILE	Chile	30,597,705	BANCO SANTANDER	Chile	217,120,783
FALABELLA SA	Chile	28,793,287	ENEL CHILE SA	Chile	36,521,069

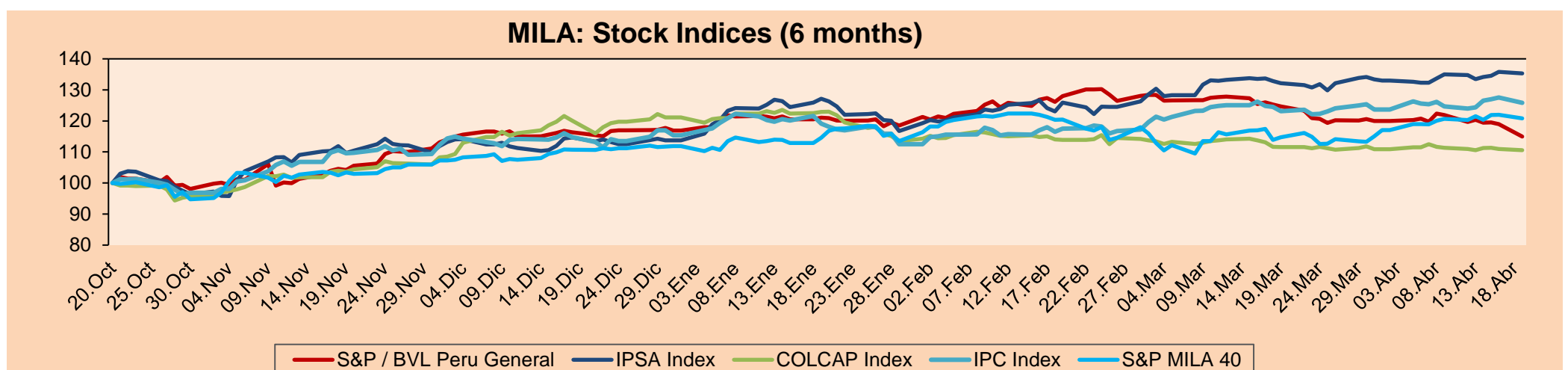
MILA

Peru: The General Index of BVL ended today's session with a negative result of -3.35%. The index maintains an annual cumulative negative trend of -1.63% in local currency, while the dollar-adjusted performance declined to -3.11%. Then, the S&P / BVL Peru SEL varied by -4.13% while the S&P / BVL LIMA 25 by -5.19%. The spot PEN reached S / 3.6734. Headline: BVL and exchange rate had a down day after poll placed Castillo as eventual winner

Chile: The IPSA index ended the day with a positive return of -0.36%. The sectors that lost the most during the day were Utilities (-1.85%) and Financials (-0.73%). The best performing stocks were Enel Américas SA (-4.42%) and Compañía Cervecerías Unidas SA (-4.22%). Headline: Commodities continue to rise and are at 2018 levels

Colombia: The COLCAP index closed today with a negative return of -0.34%. The worst performing sectors of the day were Communication Services (-2.18%) and Financials (-0.73%). The worst performing stocks were Canacol Energy Ltd. (-2.34%) and Empresa de Telecomunicaciones (-2.18%). Headline: Colombia recorded the day with the highest number of COVID deaths since the beginning of the pandemic

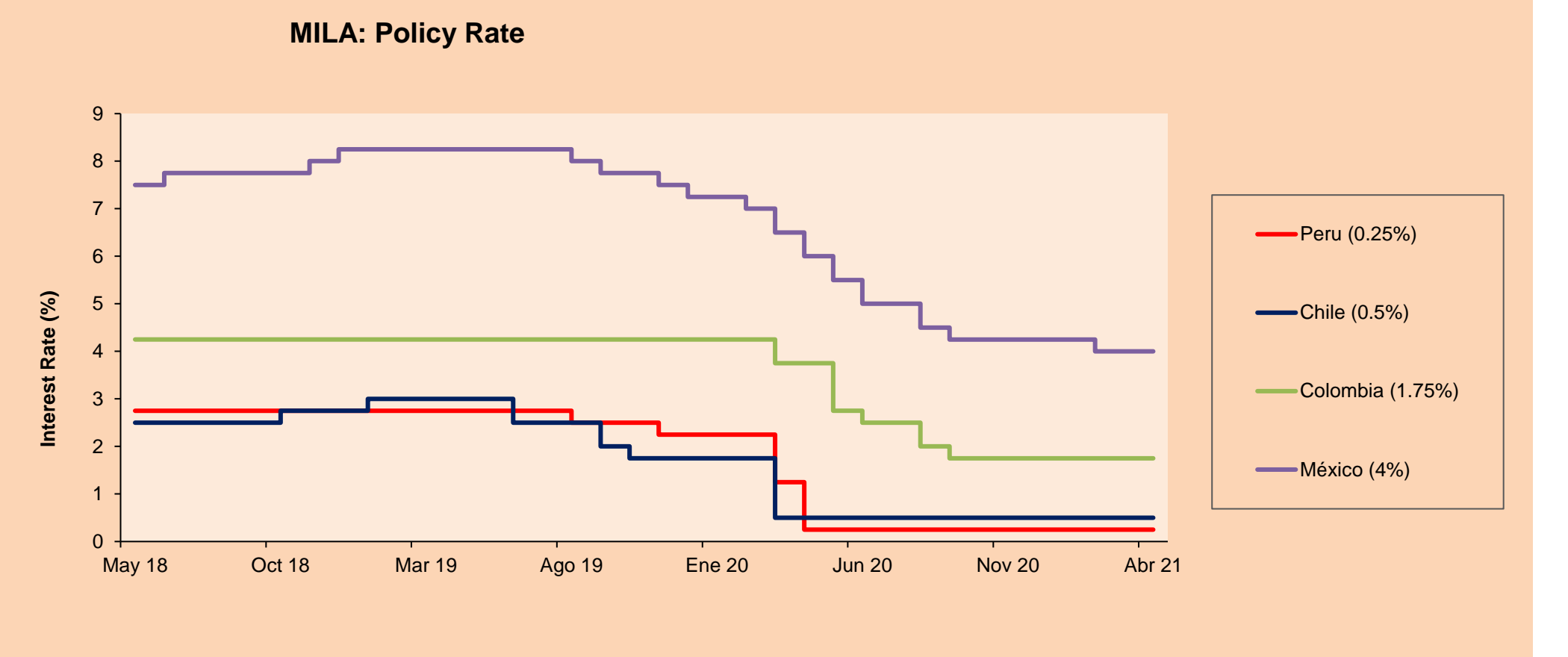
Mexico: The IPC index closed the day with a negative return of -1.34%. The worst performing sectors of the day were Industrials (-1.98%) and Materials (-1.82%). The worst performing stocks were Grupo Carso SAB de CV (-4.55%) and Beclé SAB de CV (-3.99%). Headline: Senate Commissions Approve Reform to the Hydrocarbons Law



Base: 21/10/20=100
Source: Bloomberg

ETFs

ETFs	Curr.	Close	1D	5D	30 D	YTD	Exchange
▼ iShares MSCI All Peru Caped Index Fund	USD	34.4	-3.99%	-3.69%	-3.72%	-0.81%	NYSE Arca
▲ iShares MSCI All Chile Caped Index Fund	USD	35.8	0.34%	2.76%	4.37%	18.50%	Cboe BZX
▼ Global X MSCI Colombia	USD	10.33	-1.43%	0.94%	-1.03%	-9.07%	NYSE Arca
▼ iShares MSCI Mexico Capped	USD	46.28	-0.67%	2.94%	5.61%	7.65%	NYSE Arca
▼ iShares MSCI Emerging Markets	USD	54.15	-0.37%	1.73%	0.13%	4.80%	NYSE Arca
▼ Vanguard FTSE Emerging Markets	USD	52.67	-0.21%	1.56%	-0.27%	5.11%	NYSE Arca
▼ iShares Core MSCI Emerging Markets	USD	65.51	-0.27%	1.80%	0.54%	5.59%	NYSE Arca
▲ iShares JP Morgan Emerging Markets Bonds	USD	63.77	0.15%	1.43%	1.17%	4.40%	Cboe BZX
▼ Morgan Stanley Emerging Markets Domestic	USD	6.11	-0.49%	2.00%	1.83%	-2.86%	New York



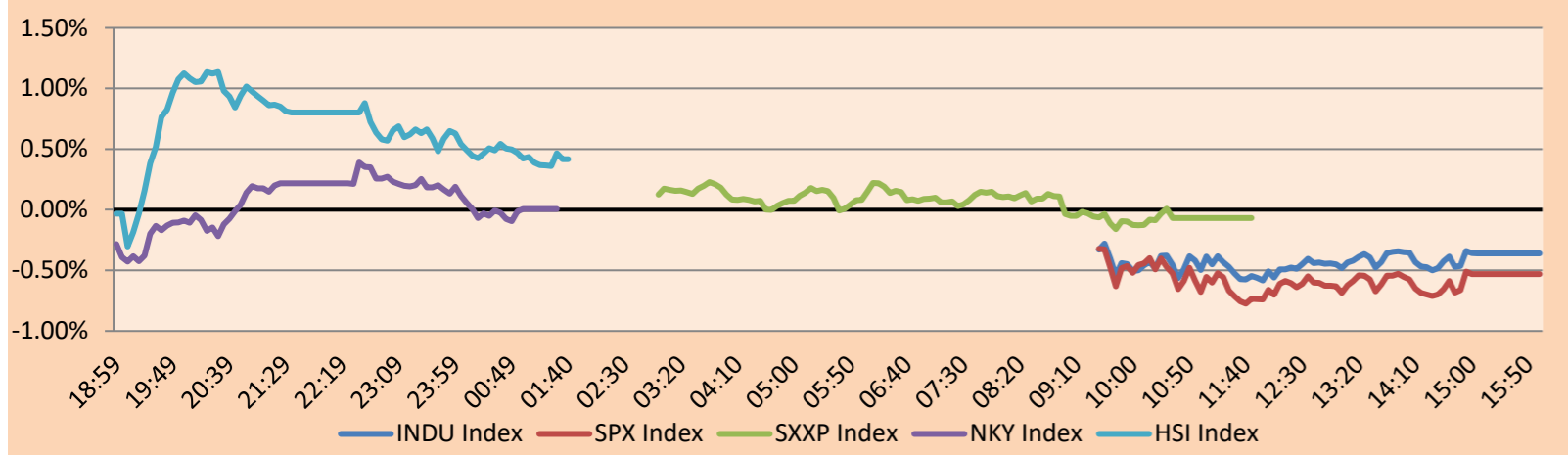
Source: Bloomberg

WORLD

Main Indices	Close	1 D*	5 D*	1 M*	YTD*	Market Cap. (US\$ Mill.)
▼ Dow Jones (USA)	34,077.63	-0.36%	0.98%	4.44%	11.34%	10,367,549
▼ Standard & Poor's 500 (EEUU)	4,163.26	-0.53%	0.85%	6.39%	10.84%	36,827,099
▼ NASDAQ Composite (USA)	13,914.77	-0.98%	0.47%	5.29%	7.96%	22,846,496
▼ Stoxx EUROPE 600 (Europe)	442.18	-0.07%	1.59%	4.45%	10.81%	10,101,678
▼ DAX (Germany)	15,368.39	-0.59%	1.01%	5.11%	12.02%	1,158,496
▼ FTSE 100 (United Kingdom)	7,000.08	-0.28%	1.61%	4.34%	8.35%	1,451,001
▲ CAC 40 (France)	6,296.69	0.15%	2.19%	4.98%	13.43%	1,712,998
▲ IBEX 35 (Spain)	8,711.40	1.14%	2.10%	2.57%	7.90%	480,500
▲ MSCI AC Asia Pacific Index	209.14	0.24%	1.83%	0.31%	4.61%	26,269,731
▲ HANG SENG (Hong kong)	29,106.15	0.47%	2.29%	0.40%	6.88%	4,453,162
▲ SHANGHAI SE Comp. (China)	3,477.55	1.49%	1.89%	2.44%	0.42%	6,592,594
▲ NIKKEI 225 (Japan)	29,685.37	0.01%	0.50%	-2.47%	5.87%	4,047,049
▲ S&P / ASX 200 (Australia)	7,065.64	0.03%	1.32%	4.62%	6.55%	1,756,775
▼ KOSPI (South Korea)	3,198.84	-1.34%	1.52%	5.62%	11.72%	1,927,239

*Legend: Variation 1D: 1 Day; 5D: 5 Days; 1M: 1 Month; YTD: Var.% 12/31/20 to date

Global Markets: Intraday Evolution (var %)

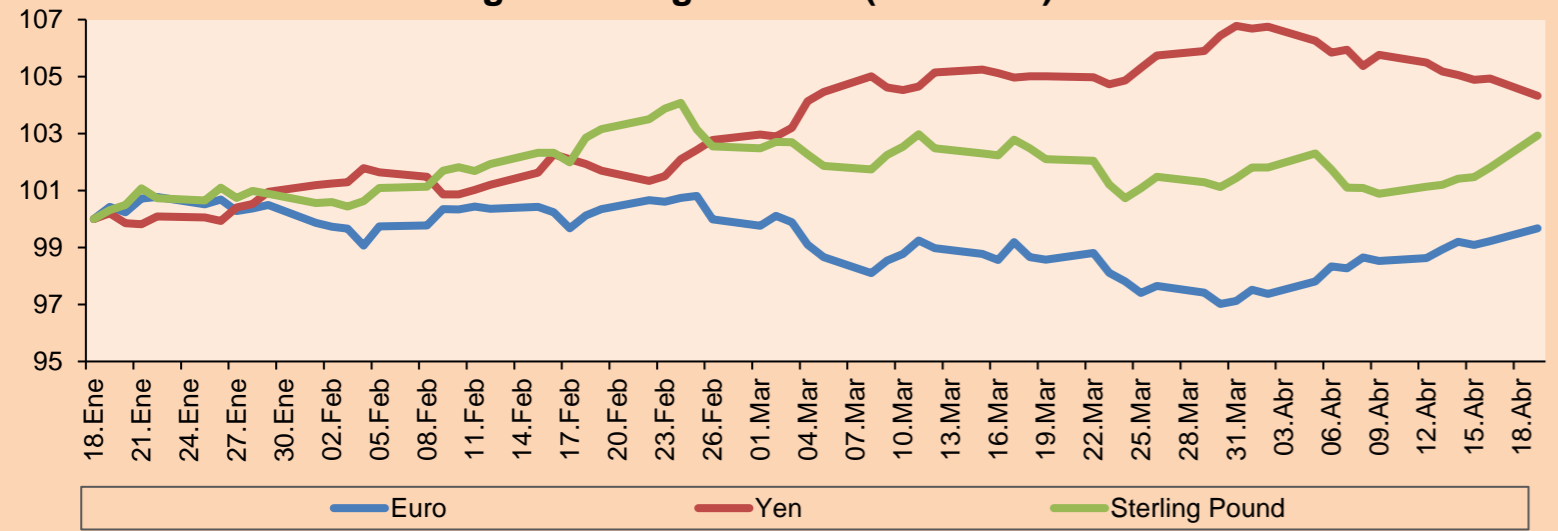


Source: Bloomberg

Currency	Price	1 D*	5 D*	1 M*	YTD*
▲ Euro	1.2037	0.45%	1.06%	1.12%	-1.47%
▼ Yen	108.1700	-0.58%	-1.11%	-0.65%	4.77%
▲ Sterling Pound	1.3986	1.11%	1.78%	0.82%	2.31%
▼ Yuan	6.5103	-0.16%	-0.58%	0.02%	-0.26%
▼ Hong Kong Dollar	7.7659	-0.07%	-0.10%	0.01%	0.17%
▼ Brazilian Real	5.5488	-0.70%	-3.25%	1.06%	6.74%
▲ Argentine Peso	92.9271	0.14%	0.38%	1.72%	10.44%

*Legend: Variation 1D: 1 Day; 5D: 5 Days; 1M: 1 Month; YTD: Var.% 12/31/20 to date

Foreign Exchange Indices (3 months)

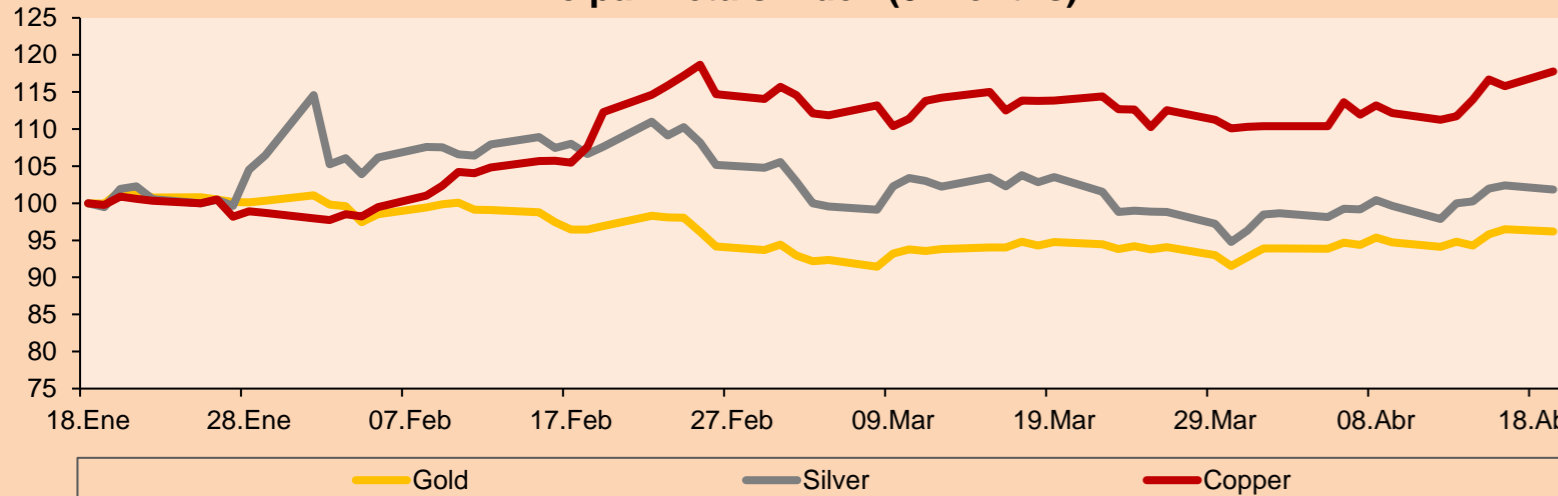


Base: 18/01/21=100
Source: Bloomberg

Commodities	Close	1 D*	5 D*	1 M*	YTD*
▼ Oro (US\$ Oz. T) (LME)	1,771.43	-0.29%	2.23%	1.50%	-6.69%
▼ Plata (US\$ Oz. T) (LME)	25.82	-0.55%	4.06%	-1.61%	-2.19%
▲ Cobre (US\$ TM) (LME)	9,384.25	1.70%	5.87%	3.44%	21.10%
▼ Zinc (US\$ TM) (LME)	2,827.00	-0.26%	3.38%	0.08%	3.58%
▲ Petróleo WTI (US\$ Barril) (NYM)	63.38	0.40%	6.16%	3.16%	30.17%
▲ Estaño (US\$ TM) (LME)	28,053.00	-0.14%	3.30%	0.01%	36.55%
▲ Plomo (US\$ TM) (LME)	2,034.75	0.38%	4.11%	5.37%	2.99%
▼ Azúcar #11 (US\$ Libra) (NYB-ICE)	16.21	-2.17%	5.53%	4.92%	14.24%
▲ Cacao (US\$ TM) (NYB-ICE)	2,492.00	1.14%	3.79%	-0.56%	-0.76%
▲ Café Arábica (US\$ TM) (NYB-ICE)	131.90	0.53%	1.46%	0.65%	0.04%

*Leyenda: Variación 1D: 1 Día; 5D: 5 Días; 1M: 1 Mes; YTD: Var.% 31/12/20 a la fecha

Principal Metals Index (3 months)



Base: 18/01/21=100
Source: Bloomberg

Equity

Germany (Stocks from DAX Index)

Largest gains	Curr.	Price	▲ %	Exchange	Largest losses	Curr.	Price	▼ %	Exchange
DHER GY	EUR	130.95	1.95	Xetra	VNA GY	EUR	56.9	-3.03	Xetra
BAYN GY	EUR	54.96	1.78	Xetra	CON GY	EUR	114.32	-2.77	Xetra
FME GY	EUR	64.22	1.33	Xetra	HEN3 GY	EUR	96.18	-2.77	Xetra
FRE GY	EUR	38.79	0.87	Xetra	ENR GY	EUR	28.76	-2.51	Xetra

Europe (Stocks from STOXX EUROPE 600)

Largest gains	Curr.	Price	▲ %	Exchange	Largest losses	Curr.	Price	▼ %	Exchange
MKS LN	GBp	162.1	3.58	Londres	NEL NO	NOK	24.57	-5.72	Oslo
BBVA SQ	EUR	4.5135	3.46	Soc.Bol SIBE	SINCH SS	SEK	1628.5	-5.65	Stockholm
SAN SQ	EUR	2.965	3.17	Soc.Bol SIBE	THG LN	GBp	633.5	-5.16	Londres
KSP ID	EUR	76.78	3.03	EN Dublin	INPST NA	EUR	15.64	-4.99	EN Amsterdam

Global Overview:

United States:

The main US indices closed with negative results as investors are waiting for the quarterly reports that justify the high valuations of the last week. One of the values that dragged the markets a lot was Tesla -3.4% after a fatal accident involving one of its cars in which the driverless mode was being used. This fall even had an impact on the value of bitcoin which fell by 8.4% due to Tesla's high investments in this currency. On the other hand, Nvidia -3.5% fell due to the announcement of the British government regarding the national security implications that the purchase of its ARM chips would bring, putting into play a contract valued at 40 billion dollars. Despite this, it is estimated that the US economy could enter a boom; as there is an excess of \$ 2 trillion in savings compared to pre-pandemic levels. Lastly, investors keep an eye on Biden's revival plan after he had a meeting to discuss the size of this plan. Thus, the S & P500 -0.53%, the NASDAQ -0.98% and the DOW JONES -0.36% closed the day with gains.

Europe:

Major European indices ended today's session mostly lower amid a weak opening on Wall Street and the depreciation of the dollar, which spurred profit-taking by investors. On the other hand, first-quarter earnings for STOXX 600-listed companies are expected to rise by more than 55% compared to the year-ago quarter, according to Reuters. However, today's session closed with slight losses dragged down by auto stocks -1.60%. On the other hand, London stocks closed lower despite the rapid vaccination campaign. In individual stocks Juventus +17.85%, remained higher throughout the session following news that it would be the only major Italian club to join the new European soccer Super League. In Germany, the DAX closed on its worst day in a month following the worrying resurgence of COVID-19 cases. Thus STOXX 600 -0.07%; FTSE 100 -0.28%; CAC 40 +0.15%; DAX -0.59% closed mostly lower.

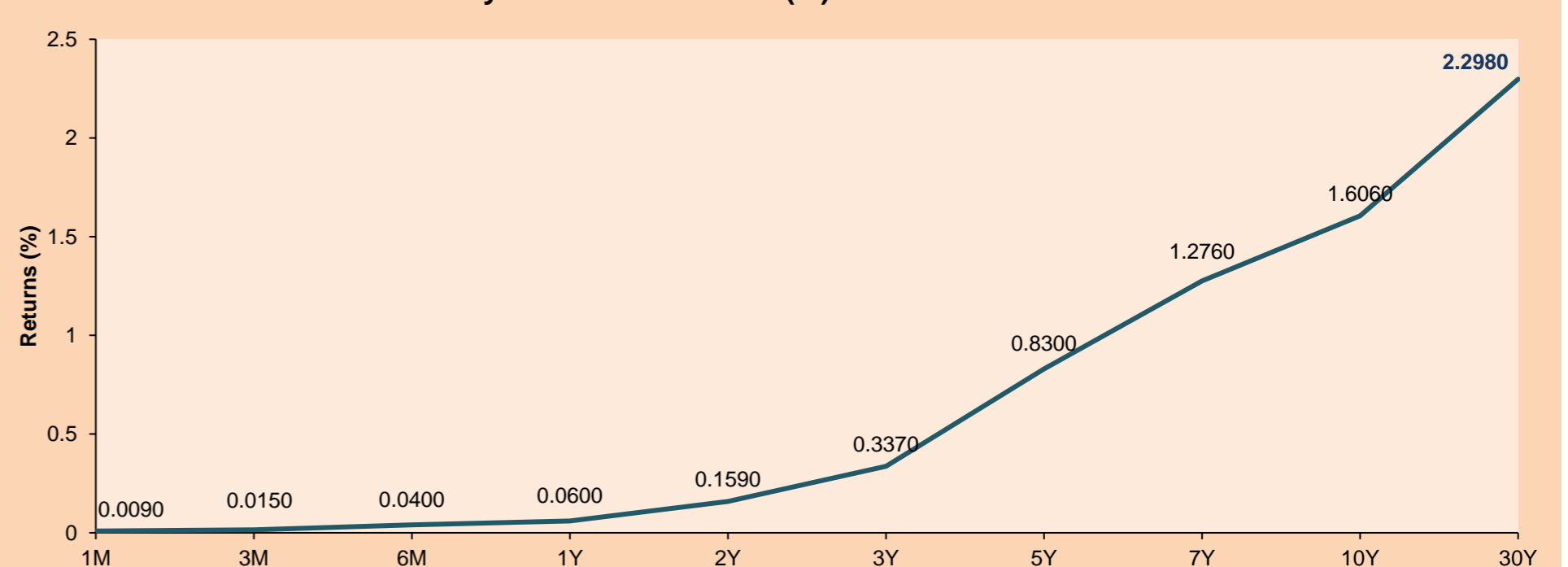
Asia:

The main Asian indexes ended up slightly, due to different changes in the sectors belonging to these indexes and foreign entries to the Chinese market. For starters, the Chinese market is driven by gains in new energy vehicle firms and strong foreign entry into the equity market, thanks to the inclusion of the MSCI and FTSE indices, generating greater confidence in the market. On the other hand, Hong Kong stocks end higher, driven by a rally in healthcare and industrial firms, although big tech companies slumped amid lingering regulatory concerns that overshadow market gains. On the other hand, the South Korean index ended up very slightly due to possible upcoming gains in the technology sector, which were mitigated by concerns about the variants of COVID19. Finally, Australian stocks were almost unchanged as losses between the energy and technology sectors eradicated an initial boost from mining and the recovery of the tourism sector thanks to a travel bubble between New Zealand and Australia. Thus, S&P/ASX200 +0.03%, KOSPI + 0.01%, Nikkei +0.01%, CSI300 +2.43%, HangSeng +0.47%

ETFs

	Curr.	Close	1D	5D	30 D	YTD	Exchange
SPDR S&P 500 ETF TRUST	USD	415.21	-0.49%	0.87%	6.61%	11.05%	NYSE Arca
ISHARES MSCI EMERGING MARKET	USD	54.15	-0.37%	1.73%	0.13%	4.80%	NYSE Arca
ISHARES IBOXX HIGH YLD CORP	USD	87.16	-0.16%	0.06%	1.28%	-0.16%	NYSE Arca
FINANCIAL SELECT SECTOR SPDR	USD	35.30	-0.28%	0.00%	3.16%	19.74%	NYSE Arca
VANECK GOLD MINERS	USD	35.79	-0.67%	5.39%	5.61%	-0.64%	NYSE Arca
ISHARES RUSSELL 2000 ETF	USD	221.73	-1.30%	0.00%	-2.30%	13.09%	NYSE Arca
SPDR GOLD SHARES	USD	165.89	-0.28%	2.22%	1.62%	-6.99%	NYSE Arca
ISHARES 20+ YEAR TREASURY BO	USD	138.86	-0.29%	1.03%	3.05%	-11.96%	NASDAQ GM
SPDR QQQ TRUST SERIES 1	USD	338.88	-0.92%	0.66%	8.22%	8.01%	NASDAQ GM
ISHARES NASDAQ BIOTECHNOLOGY	USD	151.58	-1.10%	3.47%	-2.76%	0.06%	NASDAQ GM
ENERGY SELECT SECTOR SPDR	USD	48.35	-0.10%	1.13%	-2.38%	27.57%	NYSE Arca
PROSHARES ULTRA VIX ST FUTUR	USD	4.74	5.80%	-0.63%	-29.46%	-55.49%	Cboe BZX
UNITED STATES OIL FUND LP	USD	43.32	0.32%	5.92%	3.71%	31.23%	NYSE Arca
ISHARES MSCI BRAZIL ETF	USD	35.27	0.60%	5.22%	2.98%	-4.86%	NYSE Arca
SPDR S&P OIL & GAS EXP & PR	USD	77.49	-0.03%	1.18%	-7.47%	32.46%	NYSE Arca
UTILITIES SELECT SECTOR SPDR	USD	66.87	-0.51%	3.07%	7.51%	6.65%	NYSE Arca
ISHARES US REAL ESTATE ETF	USD	96.55	0.24%	2.20%	7.23%	12.73%	NYSE Arca
SPDR S&P BIOTECH ETF	USD	128.72	-2.15%	1.31%	-11.27%	-8.57%	NYSE Arca
ISHARES IBOXX INVESTMENT GRA	USD	130.73	-0.26%	-0.02%	1.63%	-5.36%	NYSE Arca
ISHARES JP MORGAN USD EMERGI	USD	111.14	-0.07%	1.26%	1.69%	-4.12%	NASDAQ GM
REAL ESTATE SELECT SECT SPDR	USD	41.53	0.31%	2.34%	7.48%	13.59%	NYSE Arca
ISHARES CHINA LARGE-CAP ETF	USD	46.90	-0.02%	0.93%	-2.27%	1.01%	NYSE Arca
CONSUMER STAPLES SPDR	USD	69.54	-0.39%	0.36%	4.76%	3.10%	NYSE Arca
VANECK JR GOLD MINERS	USD	49.36	-1.91%	4.22%	1.63%	-9.00%	NYSE Arca
SPDR BBG BARC HIGH YIELD BND	USD	108.90	-0.09%	0.09%	1.25%	-0.04%	NYSE Arca
VANGUARD REAL ESTATE ETF	USD	96.31	0.20%	2.14%	6.43%	13.40%	NYSE Arca
GRAYSCALE BITCOIN TRUST BTC	USD	47.95	-6.66%	-7.40%	-9.45%	49.84%	OTC US

USA Treasury Bonds Yield Curve (%)



Source: Bloomberg

Capital Market Laboratory Coordinator: Economist Bruno Bellido

Collaboration: Maria Camarena, Alonso García, Nicolas Muñoz, Adrian Paredes y Jairo Valverde

email: pulsobursatil@ulima.edu.pe

facebook: www.facebook.com/pulsobursatil.ul

LIMA

Stocks

Ticker	Currency	Price	1D*	5D*	30D*	YTD*	Frequency	Volume (US\$)	Beta	Dividend Yield (%)	Price Earning	Market Cap. (M US\$)	Economic Sector*	Index Weight
▲ ALICORC1 PE**	S/.	7.15	0.11%	0.46%	-1.88%	-3.27%	100.00%	309,301	0.73	3.50	18.67	1,661.26	Industrial	3.53%
ATACOB1 PE**	S/.	0.15	0.00%	0.00%	-5.06%	8.70%	27.78%	729	1.09	0.00	-	38.58	Mining	1.02%
- BACKUS1 PE**	S/.	22.70	0.00%	0.75%	0.44%	12.66%	88.89%	154,946	0.55	0.00	10.89	8,568.20	Industrial	0.82%
▼ BAP PE**	US\$	134.25	-4.41%	-8.71%	-8.46%	-16.41%	100.00%	5,029,843	1.62	6.56	-	12,670.83	Diverse	5.82%
▲ BVN PE**	US\$	10.46	1.06%	-0.10%	-4.65%	-12.83%	100.00%	2,617,388	1.11	0.00	-	2,883.14	Mining	5.88%
- CASAGRC1 PE**	S/.	5.90	0.00%	-6.35%	1.72%	24.21%	88.89%	882	0.57	0.00	10.59	135.29	Agricultural	1.31%
▼ BBVAC1 PE**	S/.	2.23	-6.69%	-8.98%	-7.85%	2.76%	100.00%	227,124	0.71	2.02	23.34	3,963.64	Finance	2.85%
▼ CORAREI1 PE**	S/.	0.98	-10.09%	-17.65%	-14.78%	10.11%	94.44%	140,291	0.73	9.85	5.84	404.88	Industrial	1.72%
▼ CPACASC1 PE**	S/.	5.40	-2.88%	-5.59%	-8.94%	1.89%	88.89%	112,262	0.61	4.26	38.57	682.31	Industrial	2.38%
▼ CVERDEC1 PE**	US\$	21.00	-14.60%	-12.50%	-19.85%	0.38%	100.00%	443,472	1.07	2.72	26.78	7,351.18	Mining	5.25%
▼ ENGEPEC1 PE**	S/.	2.34	-4.49%	-6.77%	-11.36%	17.00%	94.44%	94,619	0.49	12.19	14.30	1,808.32	Public Services	1.44%
▼ ENDISPC1**	S/.	5.50	-5.01%	-8.33%	-9.09%	1.85%	55.56%	18,696	0.49	3.10	12.90	956.09	Public Services	0.98%
▼ FERREYC1 PE**	S/.	1.99	-6.13%	-7.44%	-11.56%	14.37%	100.00%	513,790	0.63	3.85	13.24	528.56	Diverse	4.90%
▼ AENZAC1 PE**	S/.	1.55	-6.06%	-11.43%	-11.43%	-10.92%	77.78%	6,539	0.84	0.00	-	367.91	Diverse	4.05%
▼ IFS PE**	US\$	29.20	-5.81%	-7.01%	-1.02%	-5.62%	100.00%	590,699	1.27	5.99	32.31	3,371.07	Diverse	7.22%
▼ INRETC1 PE**	US\$	37.82	-2.02%	-7.08%	-14.05%	-3.52%	100.00%	81,400	0.64	1.49	47.20	3,888.17	Diverse	5.28%
▼ LUSURC1 PE**	S/.	13.00	-8.64%	-7.14%	-5.45%	-49.02%	94.44%	28,933	0.68	5.37	13.09	1,723.30	Public Services	1.81%
▼ MINSURI1 PE**	S/.	2.55	-7.27%	-9.57%	-9.57%	37.84%	94.44%	806,669	0.81	0.00	68.55	2,001.32	Mining	3.09%
▼ PML PE**	US\$	0.14	-5.92%	-12.27%	-4.67%	34.91%	77.78%	102,237	1.47	0.00	-	37.78	Mining	2.12%
▼ RELAPAC1 PE**	S/.	0.12	-6.98%	-4.00%	-11.11%	73.91%	100.00%	40,075	0.61	0.00	-	271.76	Industrial	2.12%
▼ SCCO PE**	US\$	74.80	-1.45%	6.40%	0.66%	13.51%	100.00%	557,019	0.92	2.27	34.77	57,825.88	Mining	2.14%
▼ SIDERC1 PE**	S/.	0.95	-5.00%	-15.93%	-6.86%	11.76%	94.44%	36,529	0.83	23.63	7.61	317.56	Industrial	1.43%
▼ TV PE**	US\$	0.15	-4.97%	-3.16%	-3.16%	4.08%	94.44%	591,464	1.46	0.00	-	151.33	Mining	2.93%
▼ UNACEMC1 PE**	S/.	1.49	-9.15%	-10.78%	-16.29%	-3.87%	94.44%	72,311	0.94	0.87	32.64	737.47	Industrial	3.00%
▼ VOLCABC1 PE**	S/.	0.76	-11.63%	-3.80%	-8.43%	46.15%	100.00%	1,099,187	0.99	0.00	-	843.41	Mining	5.90%
▼ NEXAPEC1 PE**	S/.	3.15	-8.16%	-8.16%	-16.00%	11.31%	61.11%	20,188	1.11	0.00	-	1,134.88	Mining	1.56%

Quantity of shares: 26
Source: Bloomberg, Economática
* Bloomberg Industry Classification System
** PER is used in the stock market and original currency of the instrument
*Legend: Variation 1D: 1 Day; 5D: 5 Days, 1M: 1 Month; YTD: Var.% 12/31/20 to date

Up 2
Down 21
Hold 3

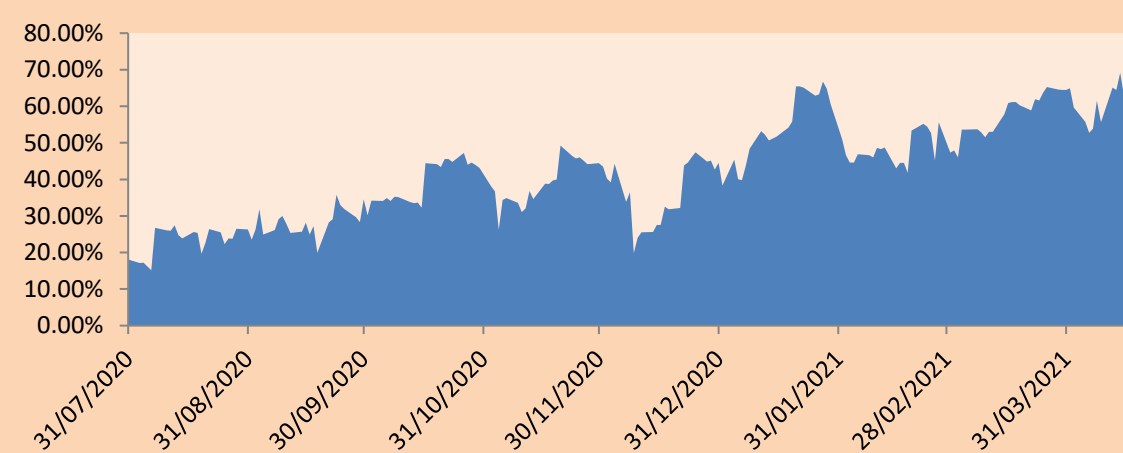
Sectorial Indices

	Close	1D*	5D*	30D*	YTD*	Beta
▼ S&P/BVLMining	427.04	-1.55%	3.71%	-3.76%	9.51%	0.91
▼ S&P/BVLConsumer	1,102.69	-2.93%	-4.81%	-10.62%	1.29%	0.43
▼ S&P/BVLIndustrials	198.05	-5.81%	-7.88%	-10.96%	3.93%	0.57
▼ S&P/BVLFinancials	896.52	-3.56%	-7.08%	-8.51%	-13.29%	1.71
▼ S&P/BVLConstruction	207.26	-5.64%	-8.15%	-10.68%	-0.89%	0.61
▼ S&P/BVLPublicSvcs	625.99	-3.06%	-3.18%	-4.44%	1.94%	0.18
▼ S&P/BVLElectricUtil	611.12	-3.06%	-3.18%	-4.44%	1.93%	0.18

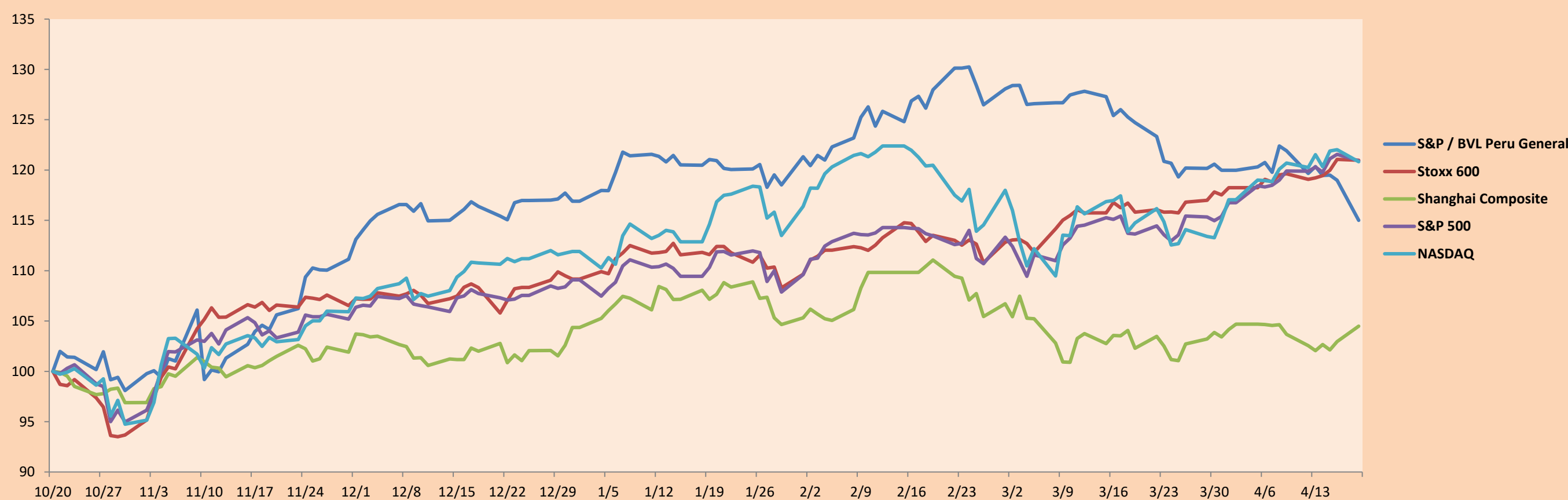
S&P/BVLConstructionTRPEN

*Legend: Variation 1D: 1 Day; 5D: 5 Days, 1M: 1 Month; YTD: Var.% 12/31/20 to date

Correlation Graph of Returns of Mining Index against Metallic Index of London (3 months)



Indices (6 months)



Base: 20/10/20=100
Source: Bloomberg

Capital Market Laboratory Coordinator: Economist Bruno Bellido
Collaboration: María Camarena, Alonso García, Nicolás Muñoz, Adrian Paredes y Jairo Valverde
email: pulsobursatil@ulima.edu.pe
facebook: www.facebook.com/pulsobursatil.ul

SOVEREIGN RATING

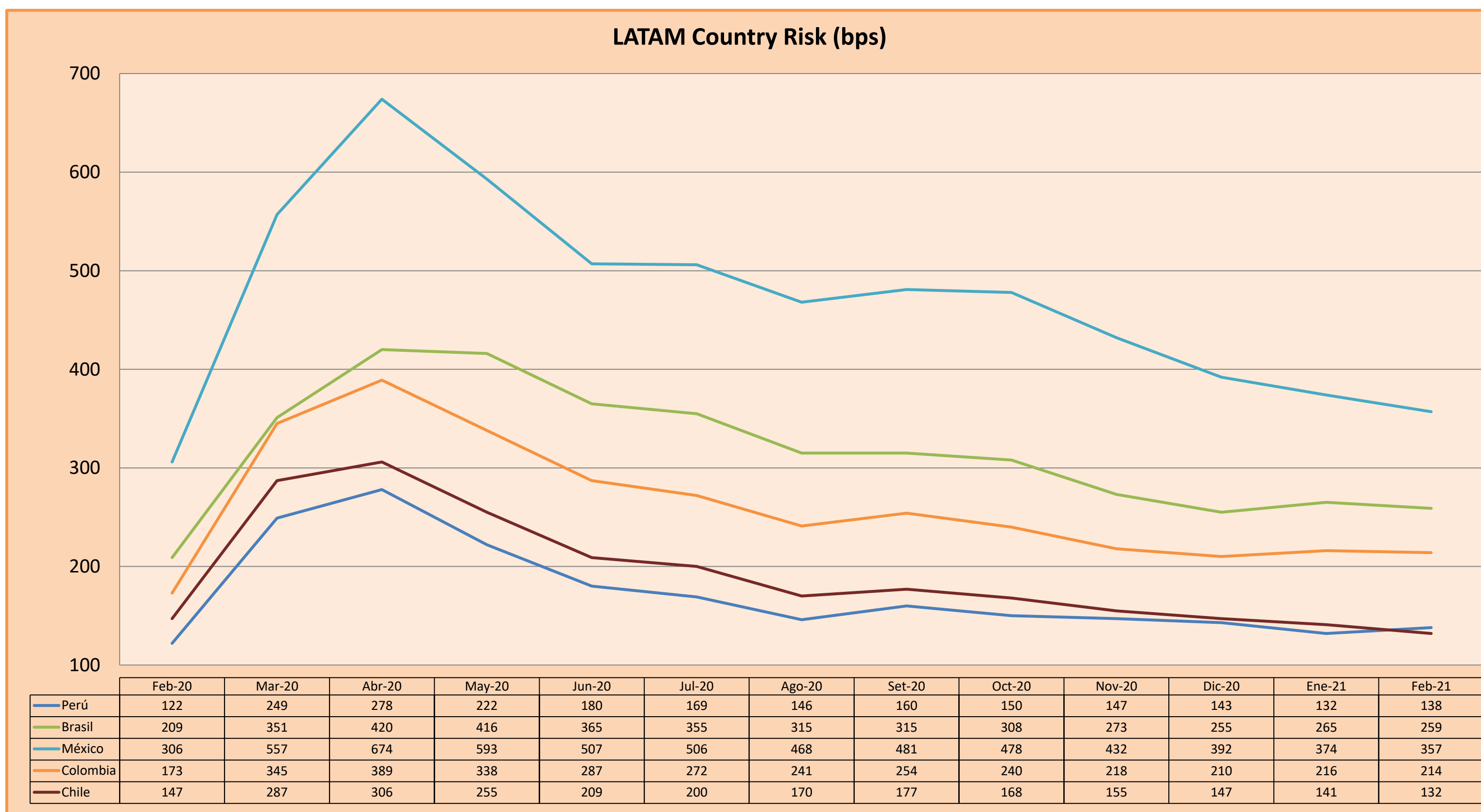
RISK RATINGS

Moody's	S&P	Fitch	
Aaa	AAA	AAA	Prime
Aa1	AA+	AA+	High credit quality
Aa2	AA	AA	
Aa3	AA-	AA-	
A1	A+	A+	Medium-high grade, with low credit risk
A2	A	A	
A3	A-	A-	
Baa1	BBB+	BBB+	Moderate Credit Risk
Baa2	BBB	BBB	
Baa3	BBB-	BBB-	
Ba1	BB+	BB+	It has speculative elements and it is subject to substantial credit risk
Ba2	BB	BB	
Ba3	BB-	BB-	
B1	B+	B+	It is considered speculative and it has high credit risk
B2	B	B	
B3	B-	B-	
Caa1	CCC+	CCC	Bad credit conditions and it is subject to high credit risk
Caa2	CCC		
Caa3	CCC-		
Ca	CC	DDD	Very close to default or in default
	C		
C	D		

Source: Bloomberg

Latin America Credit Rating			
Clasificadora de riesgo			
Country	Moody's	Fitch	S&P
Peru	A3	BBB+	BBB+
México	Ba2	BB-	BB-
Venezuela	C	WD	SD
Brazil	Ba2	BB-	BB-
Colombia	Baa2	BBB-	BBB-
Chile	A1	A-	A
Argentine	Ca	WD	CCC+
Panama	Baa2	BBB-	BBB

Source: Bloomberg



Source: BCRP

Capital Market Laboratory Coordinator: Economist Bruno Bellido
Collaboration: Maria Camarena, Alonso García, Nicolas Muñoz, Adrian Paredes y Jairo Valverde
email: pulsobursatil@ulima.edu.pe
facebook: www.facebook.com/pulsobursatil.ul