

MILA

Lima, April 29, 2021

Peru

The BVL General Index ended today's session with a positive result of + 1.57%. Then, the S&P / BVL Peru SEL varied by + 1.62% while the S&P / BVL LIMA 25 by + 3.03%. The PEN spot reached S / 3.7847. Headline: Copper exceeds \$ 10,000 per ton for the first time in 10 years.

Chile:

The IPSA index closed the day with a negative return of -0.95%. The sectors that benefited the least from the session were Energy (-4.30%) and Real Estate (-2.33%). On the other hand, the worst performing stocks were Empresas Copec SA (-4.30%) and Itau Corpbanca (-4.05%). Headline: Third withdrawal from the AFPs: Central Bank enters the scene and applies important measures to safeguard market stability.

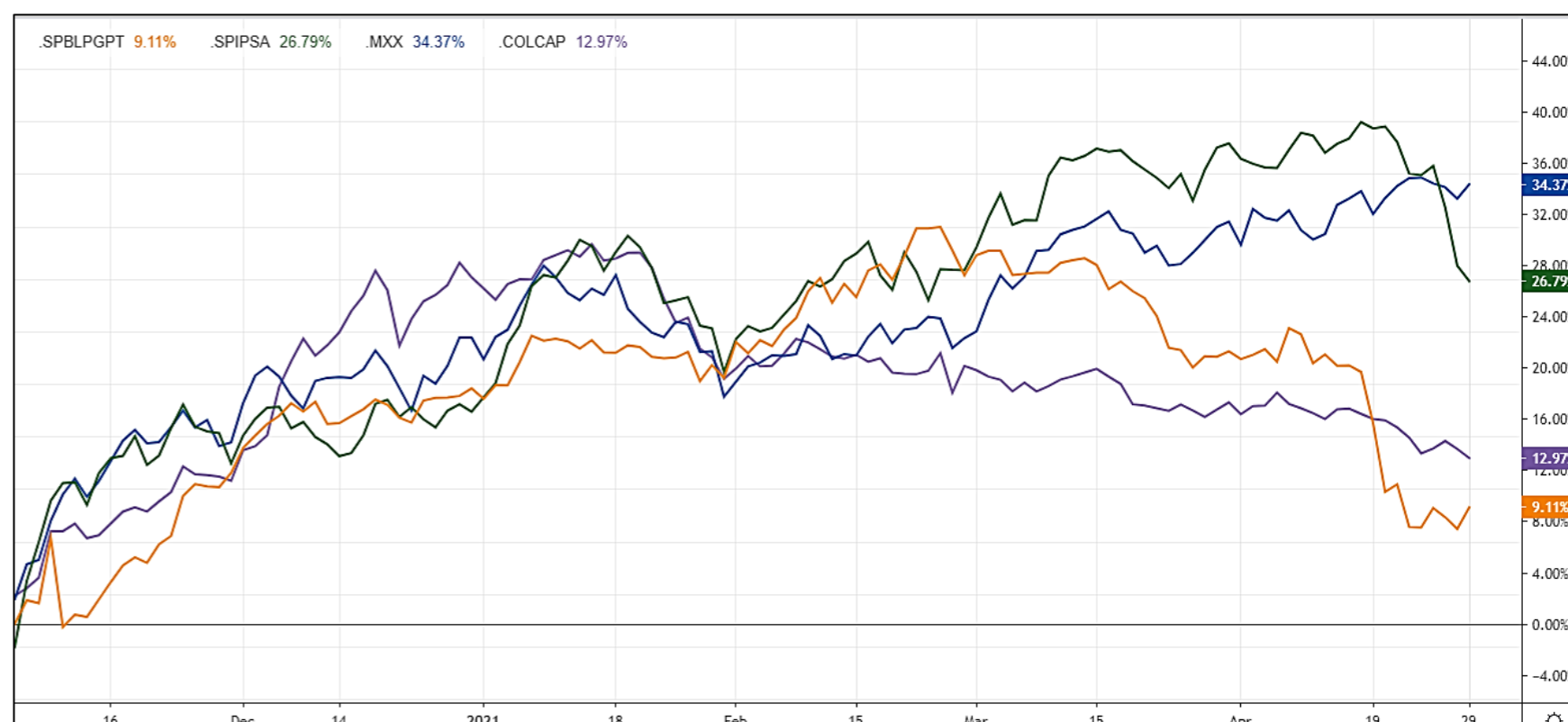
Colombia:

The COLCAP index closed today with a negative return of -0.63%. The sectors that benefited the least from the session were Basic Materials (-1.31%) and Energy (-0.90%). The stocks with the best performance were Promigas SA ESP (+ 3.18%) and Grupo Nutresa SA (+ 1.80%). Headline: The market is already treating Colombia's debt like junk bonds in anticipation of a failed tax reform

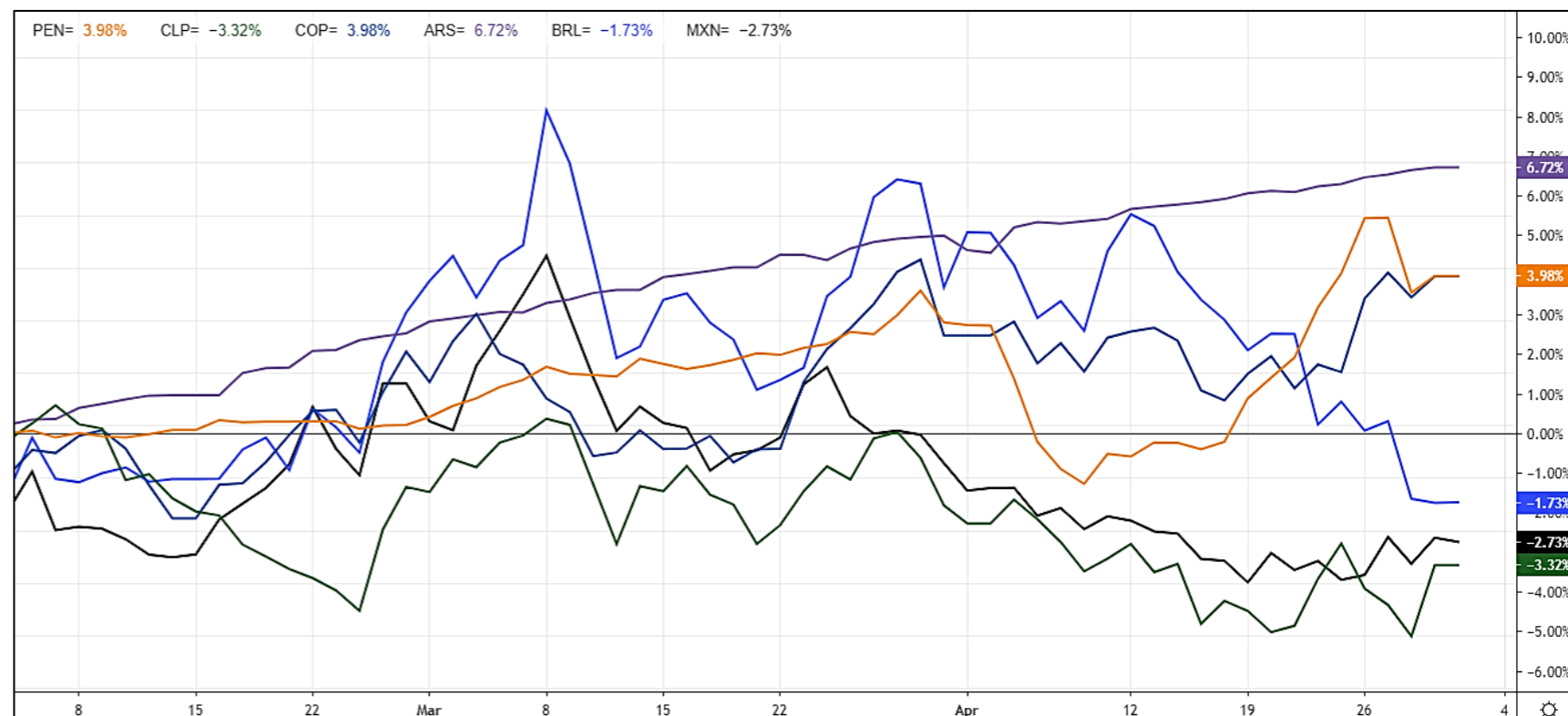
Mexico:

The IPC index closed the day with a positive return of + 0.85%. The sectors that benefited the most from the session were Basic Services (+ 2.49%) and Financial (+ 2.23%). The best performing stocks were Cemex SAB de CV (+ 5.70%) and Regional SAB de CV (+ 4.15%). Owner: Senate approves Pemex to have control over gasoline sales and price

MILA: Stock Indices (6 months)



MILA: Foreign Exchange Indices (3 Months)



Currency

RIC	Name	Last	Pct. Chng	Net. Chng	Close	Currency
ARS=	Argentine Peso	93.46	0.03 %	+0.03	93.46	ARS
BRL=	Brazilian Real	5.3381	0.01 %	+0.0006	5.3375	BRL
CLP=	Chilean Peso	709		0	709	CLP
COP=	Colombian Peso	3713.23		0	3713.23	COP
MXN=	Mexican Peso	20.0201	-0.1 %	-0.0199	20.04	MXN
PEN=	Peru Sol	3.7848	0 %	+0.0001	3.7847	PEN

MILA: Main Indexes

RIC	Name	Last	Pct. Chng	Net. Chng	Close	Currency
.SIPSA	S&P IPSA TR	4542.54	-0.95 %	-43.73	4586.27	CLP
.SPCLXIGPA	S&P/CLX IGPA TR	22946.04	-0.91 %	-210.1	23156.14	CLP
./COLSC	COLSC/d	998.64	0.22 %	+2.2	996.44	COP
.COLCAP	COLCAP Index	1278	-0.63 %	-8.16	1286.16	COP
./SPBLPGPT	S&P/BVL GENERA/d	19319.67	1.57 %	+297.78	19021.89	PEN
./SPBLPSPT	S&P/BVL SELECT/d	521.67	1.62 %	+8.34	513.33	PEN
./MXX	IPC/d	48897.79	0.85 %	+409.85	48487.94	MXN
.SPMILAPN	SP MILA40 Net TR	921.1491	-1.5 %	-14.2718	935.4209	PEN
./SPBL25PT	S&P/BVL LIMA 2/d	25279.76	3.03 %	+744.18	24535.58	PEN

WORLD

RIC	Name	Last	Net. Chng	% Chng	Volume	Volume30d	Volume60d	YTD%
/SPX	S&P 500 INDEX/d	4211.47	+28.29	0.68%				12.12%
SPIPSA	S&P IPSA TR	4542.54	-43.73	-0.95%				8.75%
/SPBLPGPT	S&P/BVL GENERA/d	19319.67	+297.78	1.57%				-7.22%
/MOEX	MOEX Russia Ind.	3571.05						8.57%
/CSI300	CSI300 INDEX/d	5156.3836	-77856	-0.15%	93310	136298	166142	-1.06%
/BSESEN	S&P SENSEX/d	49765.94			12751139	16289270		4.22%
/FCHI	CAC 40 INDEX/d	6302.57			78833296	78123264	82995189	13.53%
/MXC	IPC/d	48897.79	+409.85	0.85%	171030900	167367172	194048253	11.02%
/IBEX	IBEX 35 INDEX/d	8823.2			186261908	198977271		9.28%
/GSPTSE	S&P/TSX COMP I/d	19255.92	-101.03	-0.52%	198631517	226187032	255528978	10.45%
/STI	STRAITS TIMES/d	3231.35	+9.77	0.30%	141912600	249496849	270140722	13.58%
/FTMIB	FTSE MIB/d	24278.2	-181.37	-0.74%	439223638	420278782	483683661	9.20%
/NSEI	NIFTY 50/d	14894.9	0	0.00%	520605000	594791067		6.53%
/AXJO	S&P/ASX 200	7022.9	-59.4	-0.84%	287528855	577220987	611088282	6.62%
/FTSE	FTSE 100 INDEX/d	6961.48	-2.19	-0.03%	657930270	745539844	794759119	7.75%
/IXIC	NASDAQ COMPOSITE/d	14082.546	+31.515	0.22%	1007741946	982438050	1142425144	9.27%
/TOPIX	TOPIX INDEX	1907.31	-1.75	-0.09%	59792	1210025333	1307434167	5.69%
/STOXX	STXE 600 PR/d	438.77			1967039480	2098733013		9.96%
/HSI	HANG SENG INDE/d	28880.57	-422.69	-1.44%	818767238	2000759853	2491794125	6.06%
/BVSP	BVSP BOVESPA I/d	120065.75	-986.77	-0.82%	8500170	8646232333	9742773717	0.88%
/SSEC	SSE COMPOSITE/d	3461.8423	-13.0588	-0.38%	184862	27770361760	30380837945	-0.35%

CURRENCY

RIC	Nombre	Currency	1D	Ask Price	Bid Price
CAD=	Canadian Dollar	CAD	-0.02%	1.2283	1.2279
CNY=	Chinese Renminbi	CNY	-0.04%	6.4734	6.471
EUR=	Euro	USD	-0.02%	1.2122	1.2118
GBP=	British Pound	USD	0.01%	1.3944	1.394
JPY=	Japanese Yen	JPY	-0.06%	108.94	108.91
KRW=	Korean Won	KRW	0.16%	1107.98	1107.63

GLOBAL OVERVIEW

United States:

The main US indexes closed with positive results, thanks to different news from companies that have had big rallies today and the economic growth of the United States in this first quarter. In the United States, economic growth accelerated as the government gave money to mostly low-income households, boosting consumer spending and setting the course for what is expected to be the strongest performance of this year in almost four decades. On the other hand, the S&P 500 closed at an all-time high, which was driven by the solid earnings report from Facebook Inc, and the Amazon Inc report where they mention that sales will continue to grow as the reopening of the US economy continues. In advance. Meanwhile, Twitter falls steeply, after it announced that expenses and costs will rise by at least 25% for this year. On the other hand, the Dow ended higher, driven by the financial sector + 1.73% and the energy sector 1.60%. Thus, the S&P 500 + 0.68%, the NASDAQ + 0.22% and the DOW JONES + 0.71% closed the day with positive returns.

Europe:

Major European markets closed with losses as European bond yields rose, triggering massive profit-taking. On the other hand, major bank stocks rose to 14-month highs following strong quarterly reports this week. On the data front, the European Commission's monthly survey showed optimism rose to 110.3 points from 100.9 in March, beating estimates in a Reuters poll. Thus, the Stoxx 600 closed lower dragged down by the auto sector -2.6% after FORD announced that semiconductor shortages could halve second quarter production. In London, the FTSE 100 ended with losses despite a boost in banking stocks. In individual stocks, Unilever gained +3.30% after announcing a \$3.6 billion share buyback. Finally, the German index closed with losses dragged down by semiconductor supply concerns; thus, Volkswagen posted losses of 3% on the session. Thus; STOXX -0.26%; DAX -0.9%; CAC 40 -0.86%; FTSE 100 -0.03% ended the session down.

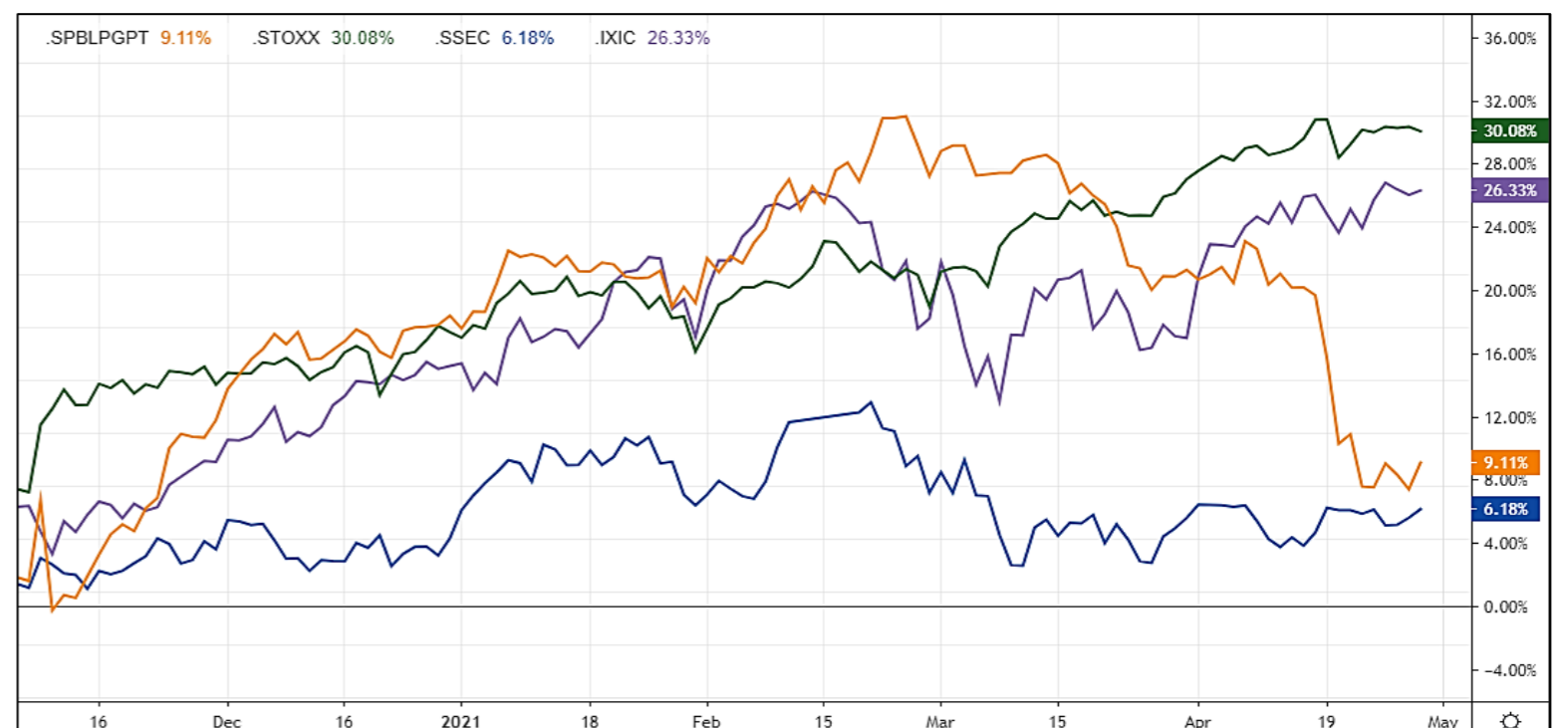
Asia:

The main Asian indices ended today's session with positive results, following the decision from the US and the optimistic results for the first quarter of the year. On a day marked by the absence of Japanese stocks due to a national holiday, the main Asia-Pacific indexes achieved outstanding results. The US Federal Reserve maintained its easy money policy and announced the purchase of 120 billion dollars in bonds each month. In China, stocks closed the session higher, largely supported by positive results in banking stocks. Citic Securities Corp +4.24%, China's largest asset broker, reported a 26.7% increase in net earnings. Similarly, Bank of Jiangsu +6.84% after reporting that its loan delinquencies fell to 1.32%. Finally, the CSI SWS stock index, which measures the performance of the financial sector, was up +2.44% at the close. In Australia, gold and technology stocks led the gains, reaching their highest level in almost 14 months. In India, investors ignored rising cases and focused on earnings reports from blue-chip companies. Thus, S&P/ASX 200 +0.25%; SHANGHAI Composite +0.52%; KOSPI -0.23%; HANG SENG +0.80%; NIFTY 50 +0.20%.

MAIN ETF'S

RIC	Name	Last	% Chng	Net. Chng	Volume	Vol 30d	Volat. 30d	% YTD	% YTD (USD)
/SPY	SPDR S&P 500/d	420.06	0.64%	2.66	78,544,3...	79,843,855	11.38	12.35%	12.35%
/EFA	ISH MSCI EAFE/d	79.10	0.04%	0.03	16,411,0...	19,776,741	12.36	8.42%	8.42%
/HYG	ISH IBOXX \$ HI/d	87.48	0.11%	0.10	17,152,880	22,752,024	3.94	0.21%	0.21%
/XLF	SPDR FINANCL S/d	36.58	1.78%	0.64	48,573,0...	52,336,922	16.31	24.08%	24.08%
/GDV	VNCK VCTR GLD /d	34.77	-1.92%	-0.68	23,574,8...	18,463,465	27.69	-3.47%	-3.47%
/IWM	ISH RSL 2000/d	227.99	-0.37%	-0.85	25,500,3...	30,075,985	24.80	16.29%	16.29%
/TAN	INVSC SOLAR/d	86.30	-2.07%	-1.82	1,449,382	1,913,118	46.70	-16.02%	-16.02%
/BIBB39.SA	NASDAQ BIOTC/d	55.15	-1.69%	-0.95	18,721			4.19%	
/BNO	US BRENT OIL F/d	17.29	1.95%	0.33	1,128,142	1,233,697	43.76	34.24%	34.24%
/DIA	SPDR DJI AVERA/d	340.57	0.65%	2.20	3,688,409	4,072,832	9.67	11.37%	11.37%
/SDY	SPDR S&P DIVDE/d	123.63	1.11%	1.36	368,881	432,224	11.02	16.71%	16.71%
/ZPDS.DE	E.II-S.US.CON./d	27.13				5,371	11.55	5.05%	3.54%
/GBTC.PK	GRAYSCALE BI O/d	43.00	-6.93%	-3.20	8,605,831	8,936,744	73.04	34.38%	34.38%
/VNO	VANGUARD RL ES/d	98.69	0.86%	0.84	3,319,085	4,235,975	12.28	16.20%	16.20%
/FXI	ISH CHINA LG C/d	47.24	-0.08%	-0.04	19,172,264	19,004,496	19.47	1.74%	1.74%
/KXI	ISH GBL CONS S/d	60.15	1.08%	0.64	30,017	35,420	9.80	3.21%	3.21%

INDICES (6 MONTHS)



LIMA

RIC	Name		Moneda	Precio	1D	5D	30D	YTD	Beta	Dividend Yield ▲
/SPBLPGPT	S&P/BVL GENERA/d	🕒 ▲	PEN	19319.67	1.57 %	1.40 %	-13.52 %		1.00	Unable to collect...
/CVERDEC1.LM	CERRO VERDE/d	🕒 ▲	USD	21.5	13.16 %	10.82 %	-14.30 %	5.28 %	1.14	
/UNACEMC1.LM	UNACEM/d	🕒 ▲	PEN	1.43	5.926 %	11.72 %	-21.43 %	-7.09 %	1.09	0.84 %
/INRETC1.LM	INRETAIL PERU/d	🕒 ▲	USD	35.5	2.9 %	1.43 %	-20.22 %	-9.44 %	0.59	1.39 %
/BACKUSH1.LM	BACKUS JOHNSTO/d	🕒 ▲	PEN	19.1	1.596 %	0.79 %	-18.72 %	-5.21 %	0.41	1.84 %
/SCCO.LM	SOUTHERN COPPE/d	🕒 ▼	USD	71.35	-1.63 %	3.05 %	-3.29 %	9.19 %	1.08	2.30 %
/ALICORC1.LM	ALICORP/d	🕒 ▲	PEN	7	3.55 %	6.38 %	-9.40 %	1.62 %	0.71	3.50 %
/CPACASC1.LM	CEM PACASMAYO/d	🕒 ▼	PEN	5.15	3 %		-12.71 %	-2.83 %	0.77	3.85 %
/BBVAC1.LM	BCO BBVA PERU/d	🕒 ▼	PEN	2	-0.498 %	-0.99 %	-15.08 %	-6.07 %	0.79	3.98 %
/BVLAC1.LM	BOLSA DE LIMA/d	🕒 ▲	PEN	2.5	2.881 %	1.21 %	2.06 %	4.62 %	0.15	4.60 %
/CASAGRC1.LM	CASA GRANDE/d	🕒 ▲	PEN	5.13	15.022 %	-5.00 %	-13.05 %	8.00 %	0.90	4.76 %
/BAP.LM	CREDICORP/d	🕒 ▲	USD	120.65	0.17 %	-2.05 %	-20.45 %	-24.88 %	1.12	5.18 %
/IFS.LM	INTERCORP/d	🕒 ▼	USD	25.81	-0.65 %	-2.05 %	-15.93 %	-14.17 %	1.22	5.22 %
/CORAREC1.LM	ACEROS AREQUIP/d	🕒	PEN	1.26		-0.79 %	-8.49 %	4.90 %	0.58	5.68 %
/CORAREI1.LM	ACEROS AREQUIP/d	🕒 ▼	PEN	1	11.111 %	17.65 %	-9.82 %	15.51 %	1.19	5.68 %
/ENDISPC1.LM	ENEL DIST PERU/d	🕒 ▲	PEN	4.3	3.865 %	2.38 %	-26.22 %	-18.02 %	0.49	Unable to collect...
/ENGIEC1.LM	ENGIE ENERG PE/d	🕒 ▼	PEN	6.26	-0.477 %	-4.43 %	-13.39 %	-7.21 %	0.37	5.25 %
/FERREYC1.LM	FERREYCORP/d	🕒 ▲	PEN	1.77	4.118 %	7.27 %	-15.69 %	6.60 %	1.17	8.81 %
/ENGEPEC1.LM	ENEL GEN PERU/d	🕒 ▲	PEN	1.9	0.529 %	-2.56 %	-26.12 %	-2.47 %	0.52	10.99 %
/PML.LM	PANORO MINERAL/d	🕒 ▲	USD	0.122	10.91 %	1.67 %	-21.29 %	15.09 %	1.96	Unable to collect...
/SIDERC1.LM	SIDER PERU/d	🕒 ▼	PEN	0.94	4.494 %	16.05 %	1.43 %	22.91 %	1.15	10.63 %
/ATACOBC1.LM	ATACOCHA/d	🕒 ▲	PEN	0.118	7.273 %	-5.60 %	-23.87 %	-14.49 %	1.85	
/BVN.LM	BUENAVENTURA/d	🕒 ▼	USD	9.72	-1.52 %	-1.82 %	-10.41 %	-19.00 %	1.33	
/AENZAC1.LM	AENZA/d	🕒 ▼	PEN	1.2		-24.53 %	-29.41 %	-31.03 %	1.50	
/MINSURI1.LM	MINSUR/d	🕒 ▲	PEN	2.52	12.5 %	10.53 %	-10.00 %	36.22 %	1.18	
/NEXAPEC1.LM	NEXA RES PERU/d	🕒 ▲	PEN	2.7	7.407 %	-3.57 %	-28.95 %	-4.59 %	1.66	
/RELAPAC1.LM	RELAPA SAA/d	🕒 ▼	PEN	0.115		21.05 %	-15.44 %	66.67 %	1.91	
/RIMSEGC1.LM	RIMAC SEGUROS/d	🕒	PEN	1.05			-8.70 %	6.36 %	0.55	
/TV.LM	TREVALI MINING/d	🕒 ▼	USD	0.16	-0.62 %	11.11 %	6.67 %	8.84 %	2.45	
/VOLCABC1.LM	VOLCAN MINERA/d	🕒 ▼	PEN	0.73	5.797 %	8.96 %	-13.10 %	40.38 %	1.63	

*Source : REfinitiv

Capital Markets Laboratory Coordinator: Economist Bruno Bellido
 Collaboration: María Camarena, Alonso García, Adrian Paredes y Jairo Valverde
 email: pulsobursatil@ulima.edu.pe
 Facebook: www.facebook.com/pulsobursatil.ul

RATING SOBERANO

CLASIFICACIONES DE RIESGO

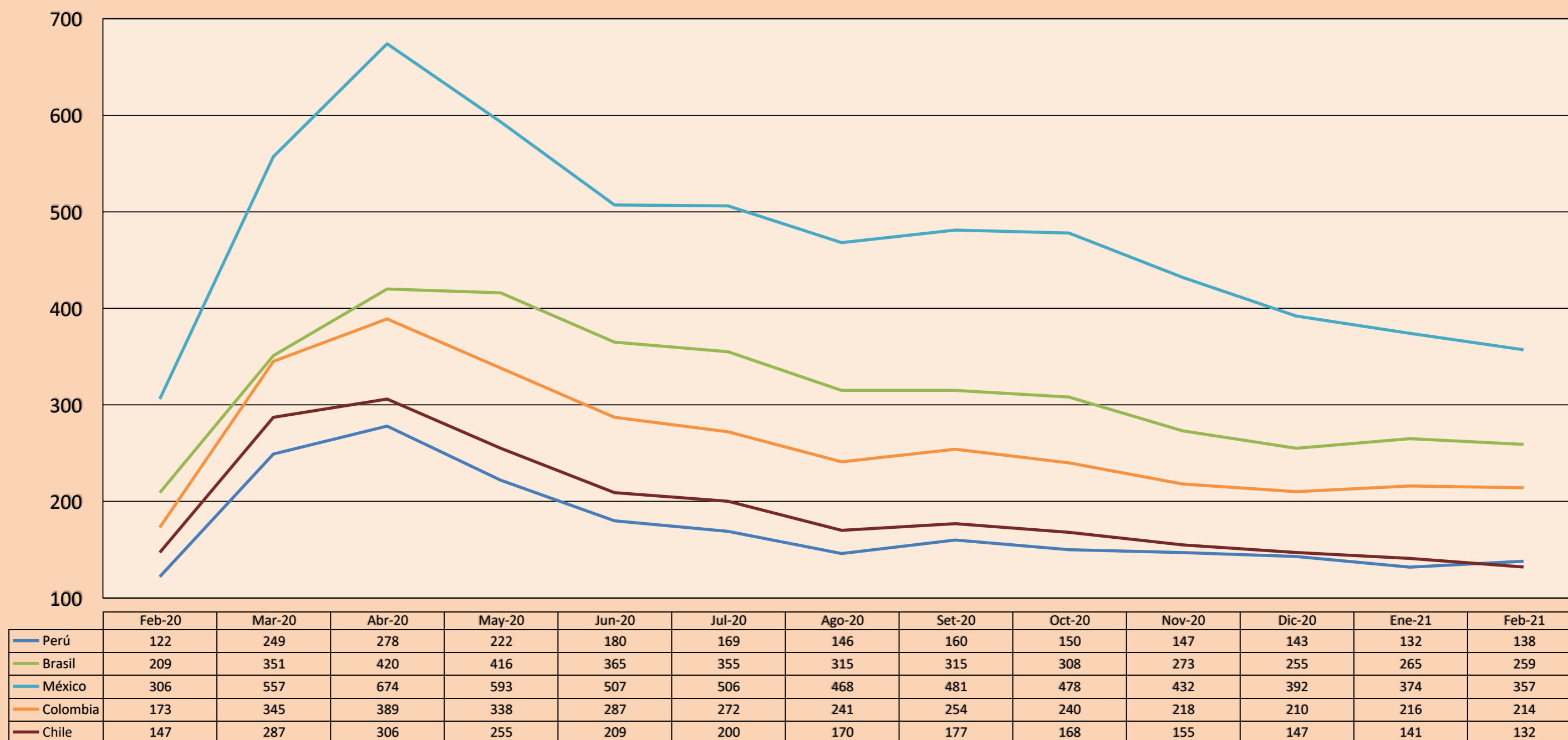
Moody's	S&P	Fitch		32
Aaa	AAA	AAA	Prime	
Aa1	AA+	AA+	Alto Grado	
Aa2	AA	AA		
Aa3	AA-	AA-		
A1	A+	A+	Grado Alto Medio	
A2	A	A		
A3	A-	A-		
Baa1	BBB+	BBB+	Grado Bajo Medio	
Baa2	BBB	BBB		
Baa3	BBB-	BBB-		
Ba1	BB+	BB+	Sin Grado de Inversión Especulativo	
Ba2	BB	BB		
Ba3	BB-	BB-		
B1	B+	B+	Altamente Especulativo	
B2	B	B		
B3	B-	B-		
Caa1	CCC+	CCC	Riesgo Sustancial Extremadamente Especulativo	
Caa2	CCC			
Caa3	CCC-			
Ca	CC	DDD	Poca esperanzas de Pago	
C	C			
	D			
		DD	Impago	
		D		

Source : Bloomberg

Rating Crédito Latinoamérica			
Clasificadora de riesgo			
País	Moody's	Fitch	S&P
Perú	A3	BBB+	BBB+
México	Baa1	BBB-	BBB
Venezuela	C	WD	SD
Brazil	Ba2	BB-	BB-
Colombia	Baa2	BBB-	BBB-
Chile	A1	A-	A
Argentina	Ca	WD	CCC+
Panamá	Baa2	BBB-	BBB

Source: Bloomberg

Riesgo País Latinoamérica (pbs)



Source: BCRP

Capital Markets Laboratory Coordinator: Economist Bruno Bellido
Collaboration: María Camarena, Alonso García, Adrian Paredes y Jairo Valverde
email: pulsobursatil@ulima.edu.pe
Facebook: www.facebook.com/pulsobursatil.ul