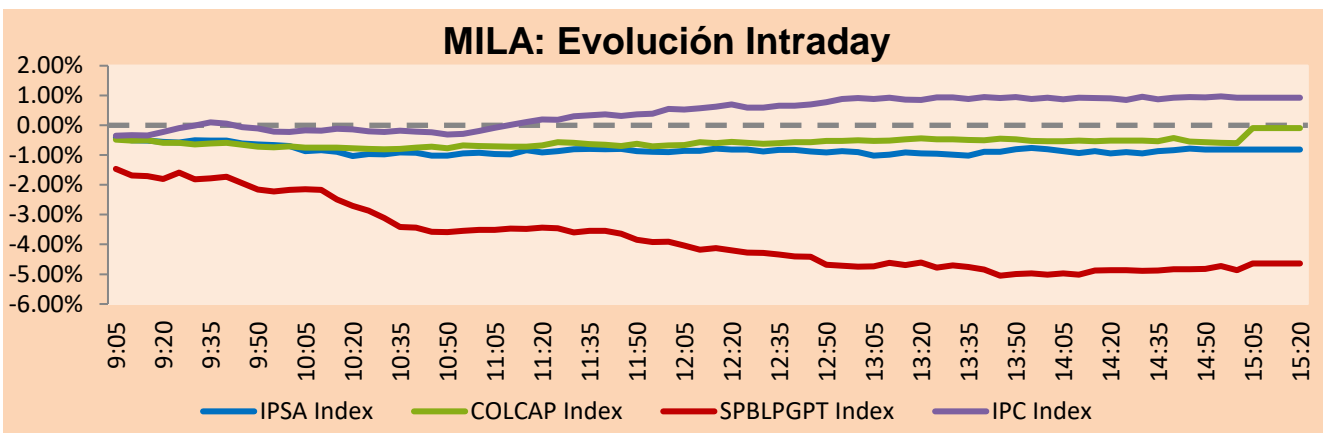


MILA

Lima, April 20, 2021

Main Indexes	Close	1 D	5 D	1 M	YTD	Cap. Burs. (US\$ bill)
▲ IPSA (Chile)	4,975.80	0.11%	1.51%	2.49%	19.12%	145.49
▲ IGPA (Chile)	25,106.94	0.04%	1.54%	2.58%	19.51%	175.78
▼ COLSC (Colombia)	1,023.12	-0.13%	0.22%	-2.00%	-3.39%	5.11
▼ COLCAP (Colombia)	1,311.39	-0.09%	-0.09%	-0.99%	-8.80%	77.81
▼ S&P/BVL (Perú)*	19,533.66	-4.64%	-8.88%	-12.07%	-6.19%	101.65
▼ S&P/BVL SEL (Perú)	519.62	-4.29%	-8.22%	-11.75%	-5.77%	91.01
▼ S&P/BVL LIMA 25	25,329.30	-5.46%	-11.47%	-13.94%	0.52%	100.74
▲ IPC (México)	48,528.97	0.95%	2.16%	3.19%	10.13%	301.31
▼ S&P MILA 40	556.42	-0.91%	0.25%	-0.83%	4.08%	6,017.58

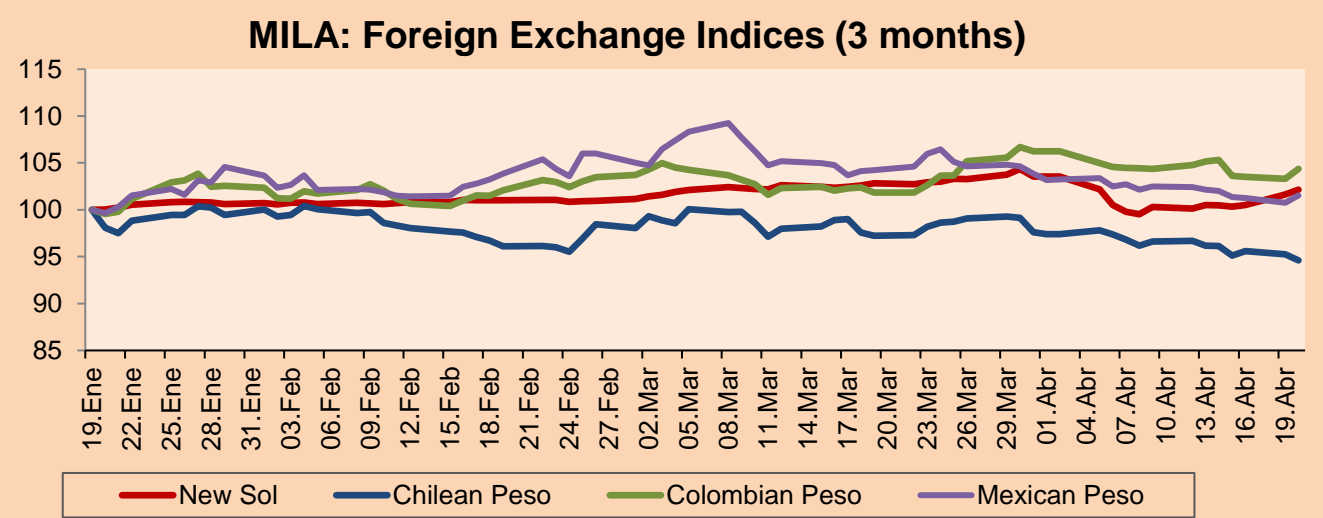
*Legend: Variation 1D: 1 day; 5D: 5 days; 1M: 1 Month; YTD: Var% 12/31/20 to date



Source: Bloomberg

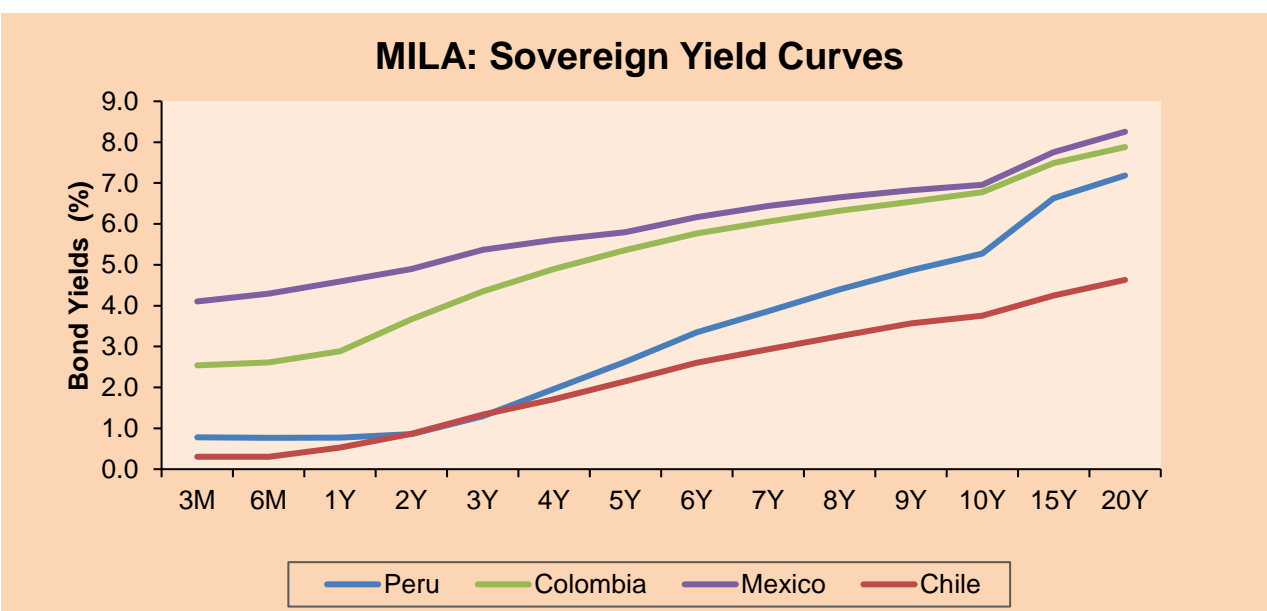
Currency	Price	1D*	5D*	30 D*	YTD*
▲ Sol (PEN)	3,692.3	0.51%	1.64%	-0.66%	2.05%
▼ Chilean Peso (CLP)	696.88	-0.68%	-1.63%	-2.72%	-2.09%
▲ Colombian Peso (COP)	3,639.46	1.04%	-0.74%	2.47%	6.12%
▲ Mexican Peso (MXN)	19.97	0.78%	-0.61%	-2.61%	0.29%

*Legend: Variation 1D: 1 day; 5D: 5 days; 1M: 1 Month; YTD: Var% 12/31/20 to date



Base: 19/01/21=100
Source: Bloomberg

Fixed Income	Currency	Price	Bid Yield (%)	Ask Yield (%)	Duration
PERU 7.35 07/21/25	USD	123.482	1.64	1.58	3.72
PERU 4.125 08/25/27	USD	111.168	2.23	2.22	5.67
PERU 8.75 11/21/33	USD	155.201	3.37	3.31	8.66
PERU 6.55 03/14/37	USD	135.124	3.64	3.60	10.50
PERU 5.625 11/18/2050	USD	132.969	3.78	3.76	16.37
CHILE 2.25 10/30/22	USD	102.766	0.54	0.31	1.49
CHILE 3.125 01/21/26	USD	108.407	1.33	1.25	4.44
CHILE 3.625 10/30/42	USD	106.994	3.20	3.15	15.33
COLOM 11.85 03/09/28	USD	159.614	2.53	2.27	5.29
COLOM 10.375 01/28/33	USD	154.125	4.53	4.32	7.82
COLOM 7.375 09/18/37	USD	133.947	4.47	4.41	10.63
COLOM 6.125 01/18/41	USD	120.892	4.54	4.49	12.31
MEX 4 10/02/23	USD	120.892	4.543	4.485	12.31
MEX5.55 01/45	USD	117.035	4.41	4.37	14.09



Source: Bloomberg

Equity

Largest gains	Exchange	Currency	Price	▲%	Largest losses	Exchange	Currency	Price	▼%
CAP	Chile	CLP	14600.00	4.38	VOLCAN CIA MIN-B	Peru	PEN	0.76	-11.63
CEMENTOS ARGOS	Colombia	COP	5390.00	3.06	ALICORP-C	Peru	PEN	7.15	-6.41
GRUPO TELEV-CPO	Mexico	MXN	53.46	2.59	FERREYCORP SAA	Peru	PEN	1.99	-6.13
ENEL CHILE SA	Chile	CLP	56.70	1.07	GRUPO CARSO-A1	Mexico	MXN	58.37	-4.55
BUENAVENTURA-ADR	Peru	USD	10.46	1.06	ENEL AMERICAS SA	Chile	CLP	108	-4.42

Per Turnover	Exchange	Amount (US\$)	Per Volume	Exchange	Volume
ENEL AMERICAS SA	Chile	55,290,815	ITAU CORPBANCA	Chile	999,539,380
GRUPO F BANORT-O	Mexico	37,637,312	ENEL AMERICAS SA	Chile	355,748,485
WALMART DE MEXIC	Mexico	35,109,822	BANCO DE CHILE	Chile	251,692,649
BANCO DE CHILE	Chile	30,597,705	BANCO SANTANDER	Chile	217,120,783
FALABELLA SA	Chile	28,793,287	ENEL CHILE SA	Chile	36,521,069

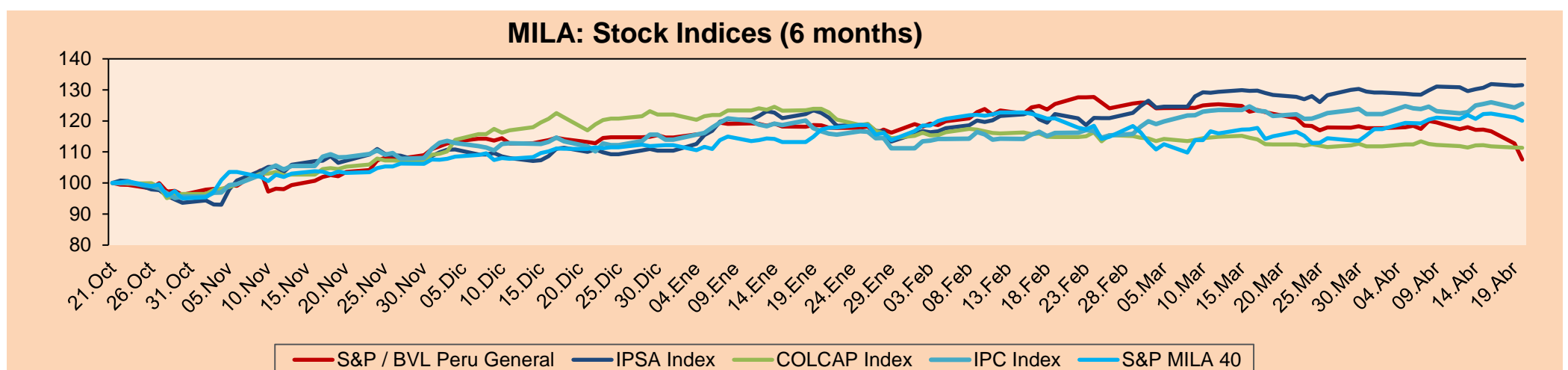
MILA

Peru: The General Index of the BVL ended today's session with a negative result of -4.64%. The index maintains an annual accumulated negative trend of -6.19% in local currency, while the adjusted return in dollars falls to -8.08%. Then, the S&P / BVL Peru SEL varied by -4.29% while the S&P / BVL LIMA 25 by -5.46%. The PEN spot reached S / 3.6923. Headline: Exchange rate: sun falls for the third consecutive day after the impact of the last survey.

Chile: The IPSA index ended the day with a positive return of + 0.11%. The sectors that benefited the most from the conference were Public Services (+ 1.85%) and Information Technology (+ 1.04%). The best performing stocks were Enel Américas SA (+ 4.63%) and Viña Concha y Toro SA (+ 2.69%). Headline: Interest rates on consumer loans fall to their lowest level since there is registration

Colombia: The COLCAP index closed today with a negative return of -0.09%. The most affected sectors of the day were Energy (-0.93%) and Basic products (-0.48%). The worst performing stocks were Almacenes Éxito SA. (-2.38%) and Canacol Energy Ltd. (-1.91%). Headline: Duque Says Tax Reform Will Avoid Social "Time Bomb"

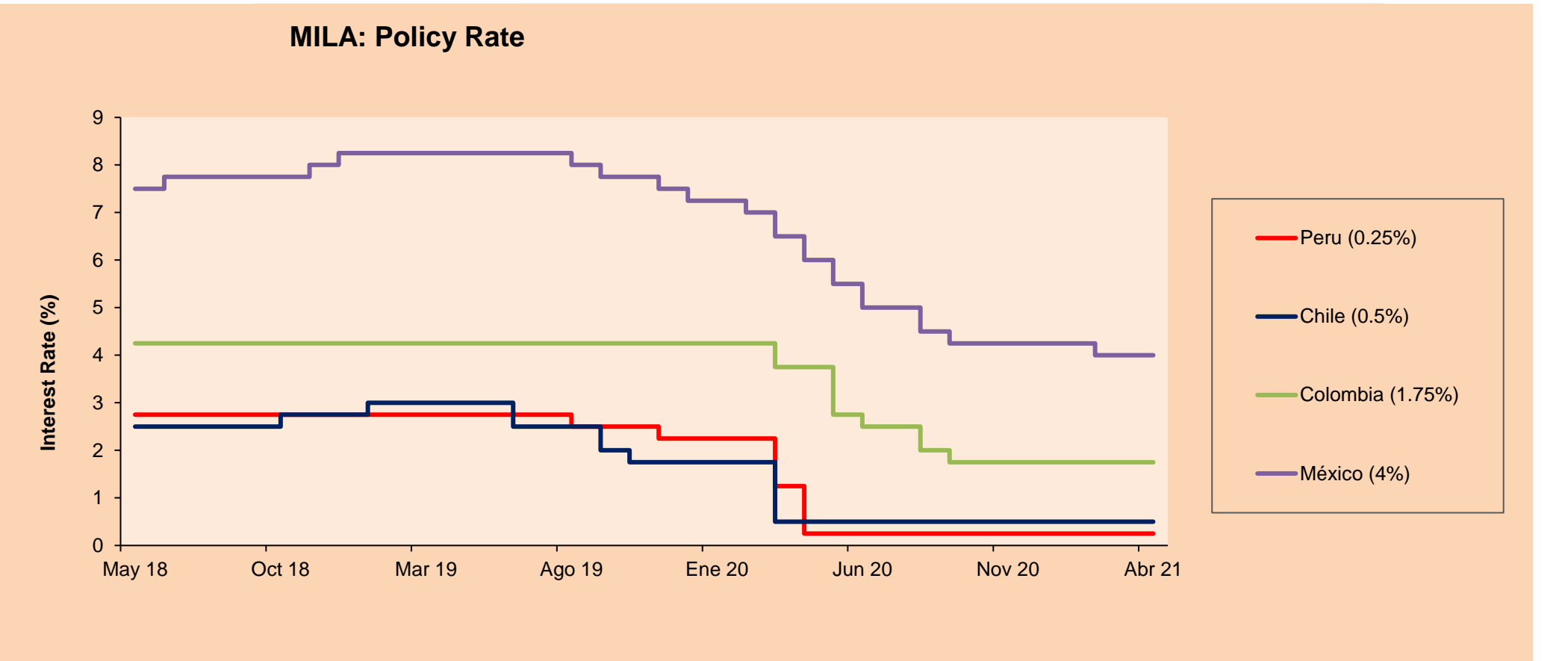
Mexico: The IPC index closed the day with a positive return of + 0.95%. The sectors that benefited the most from the conference were First Needs Products (+ 2.05%) and Communication Services (+ 1.04%). The best performing stocks were Arca Continental SAB de CV (+ 3.99%) and Alfa SAB de CV (+ 3.92%). Headline: Economy improves performance ... but still uneven



Base: 22/10/20=100
Source: Bloomberg

ETFs

ETFs	Curr.	Close	1D	5D	30 D	YTD	Exchange
▼ iShares MSCI All Peru Caped Index Fund	USD	32.84	-4.53%	-8.01%	-8.09%	-5.31%	NYSE Arca
▼ iShares MSCI All Chile Caped Index Fund	USD	35.52	-0.78%	2.10%	3.56%	17.58%	Cboe BZX
▼ Global X MSCI Colombia	USD	10.195	-1.31%	0.20%	-2.32%	-10.26%	NYSE Arca
▼ iShares MSCI Mexico Capped	USD	46.24	-0.09%	2.14%	5.52%	7.56%	NYSE Arca
▼ iShares MSCI Emerging Markets	USD	53.71	-0.81%	0.49%	-0.68%	3.95%	NYSE Arca
▼ Vanguard FTSE Emerging Markets	USD	52.27	-0.76%	0.77%	-1.02%	4.31%	NYSE Arca
▼ iShares Core MSCI Emerging Markets	USD	65.03	-0.73%	0.68%	-0.20%	4.82%	NYSE Arca
▼ iShares JP Morgan Emerging Markets Bonds	USD	63.53	-0.38%	1.18%	0.79%	4.01%	Cboe BZX
▲ Morgan Stanley Emerging Markets Domestic	USD	6.14	0.49%	1.99%	2.33%	-2.38%	New York



Source: Bloomberg

WORLD

Main Indices	Close	1 D*	5 D*	1 M*	YTD*	Market Cap. (US\$ Mill.)
▼ Dow Jones (USA)	33,821.30	-0.75%	0.43%	3.66%	10.50%	10,367,549
▼ Standard & Poor's 500 (EEUU)	4,134.94	-0.68%	-0.16%	5.67%	10.09%	36,827,099
▼ NASDAQ Composite (USA)	13,786.27	-0.92%	-1.50%	4.32%	6.97%	22,846,496
▼ Stoxx EUROPE 600 (Europe)	433.80	-1.90%	-0.45%	2.47%	8.71%	9,917,385
▼ DAX (Germany)	15,129.51	-1.55%	-0.69%	3.48%	10.28%	1,140,644
▼ FTSE 100 (United Kingdom)	6,859.87	-2.00%	-0.44%	2.25%	6.18%	1,426,791
▼ CAC 40 (France)	6,165.11	-2.09%	-0.31%	2.79%	11.05%	1,677,827
▼ IBEX 35 (Spain)	8,459.40	-2.89%	-0.77%	-0.40%	4.78%	467,014
▼ MSCI AC Asia Pacific Index	207.92	-0.58%	0.97%	-0.27%	4.00%	26,153,481
▲ HANG SENG (Hong kong)	29,135.73	0.10%	2.24%	0.50%	6.99%	4,450,985
▼ SHANGHAI SE Comp. (China)	3,472.94	-0.13%	2.25%	2.01%	0.00%	6,604,061
▼ NIKKEI 225 (Japan)	29,100.38	-1.97%	-2.19%	-3.91%	4.31%	3,984,227
▼ S&P / ASX 200 (Australia)	7,017.77	-0.68%	0.59%	3.74%	5.65%	1,730,864
▲ KOSPI (South Korea)	3,220.70	0.95%	2.16%	5.08%	11.16%	1,931,843

*Legend: Variation 1D: 1 Day; 5D: 5 Days; 1M: 1 Month; YTD: Var.% 12/31/20 to date

Equity

Germany (Stocks from DAX Index)

Largest gains	Curr.	Price	▲ %	Exchange	Largest losses	Curr.	Price	▼ %	Exchange
DHER GY	EUR	128.75	-1.68	Xetra	VNA GY	EUR	57.24	0.60	Xetra
BAYN GY	EUR	54.14	-1.49	Xetra	CON GY	EUR	111.96	-2.06	Xetra
FME GY	EUR	64.04	-0.28	Xetra	HEN3 GY	EUR	94.76	-1.48	Xetra
FRE GY	EUR	38.26	-1.37	Xetra	ENR GY	EUR	27.89	-3.03	Xetra

Europe (Stocks from STOXX EUROPE 600)

Largest gains	Curr.	Price	▲ %	Exchange	Largest losses	Curr.	Price	▼ %	Exchange
MKS LN	GBp	153.95	-5.03	Londres	NEL NO	NOK	23.74	-3.38	Oslo
BBVA SQ	EUR	4.3125	-4.45	Soc.Bol SIBE	SINCH SS	SEK	1570	-3.59	Stockholm
SAN SQ	EUR	2.8515	-3.83	Soc.Bol SIBE	THG LN	GBp	617.5	-2.53	Londres
KSP ID	EUR	76.24	-0.70	EN Dublin	INPST NA	EUR	15.4	-1.53	EN Amsterdam

Global Overview:

United States:

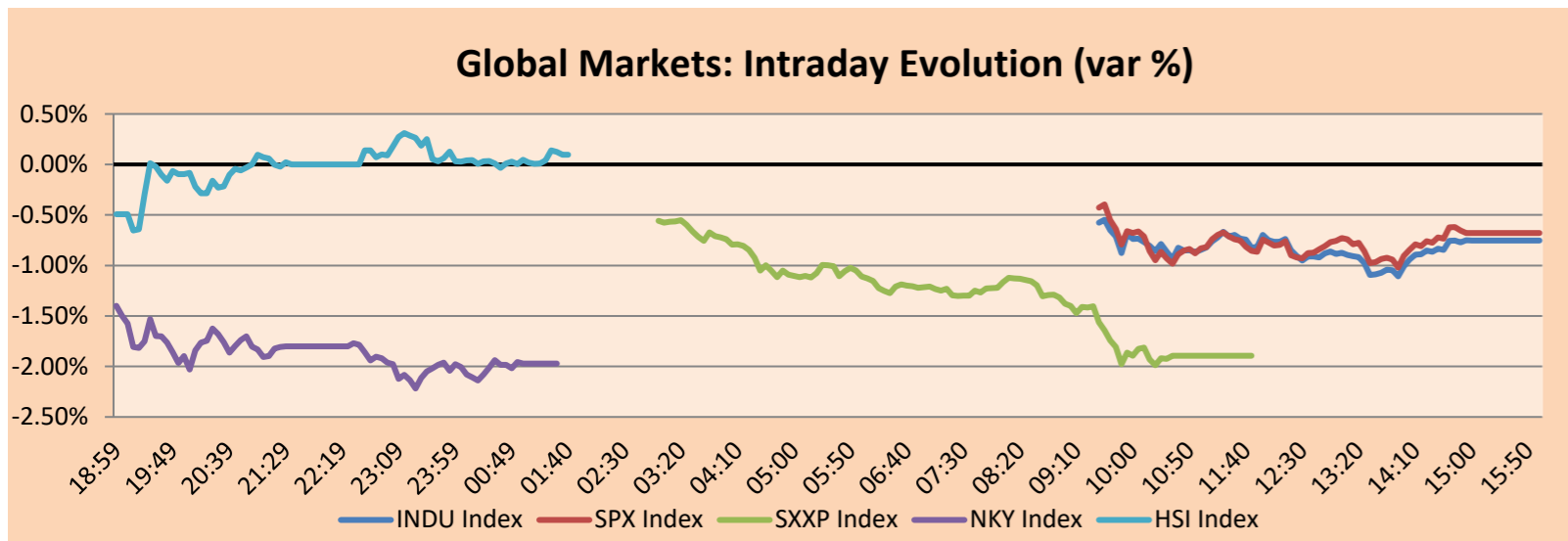
The major U.S. indices ended the session with negative returns for the second consecutive day amid the global increase in COVID-19 cases. Investors downplayed the positive earnings reports of the past two weeks on concerns about the number of contagions outside the United States. Because these could hamper the global economic recovery and with it, U.S. multinationals. Thus, large airline operators shares and Jetblue Airways -4.46%, American Airlines -5.48%, Norwegian Cruise Line -4.36% and Carnival Corp. 4.45% fell more than 4%. Instead, investors sought safety in Real Estate and services stocks. After the markets closed, Netflix fell by more than 10% after it announced a drop in the number of predicted subscribers for the first quarter of 2021. On the other hand, P&G announced a price increase in September after commodity inflation affected earnings per share from \$1.26 to \$1.19. Thus, Dow Jones -0.75%; NASDAQ -0.92% and S&P 500 -0.68% ended the session with losses.

Europe:

The main European indexes ended today's session with a resounding fall, registering their worst day in this year. These decreases are due to falls in the sectors with the highest increase at the beginning of the year and the demands on tobacco companies proposed by Biden. The Eurozone index falls in all its sectors, with Real Estate +0.60% being the only redeemable. On the other hand, the index of Great Britain had its biggest fall in the last 2 months, being affected by the energy sectors -3.26% and the financial sector -2.64%. Likewise, the DAX of Germany fell due to the fall of the discretionary consumer sectors -2.52% and the industrial sector in -2.04%. On the other hand, British American Tobacco and Imperial Brands fell sharply as the Biden administration wants the nicotine levels of all cigarettes sold in the United States to be lowered. Finally, Johnson & Johnson resumes its launch of the COVID19 vaccine in Europe. Thus, STOXX 600 -1.9%; FTSE 100 -2.00%; CAC 40 -2.09%; DAX -1.55% closed lower.

Asia:

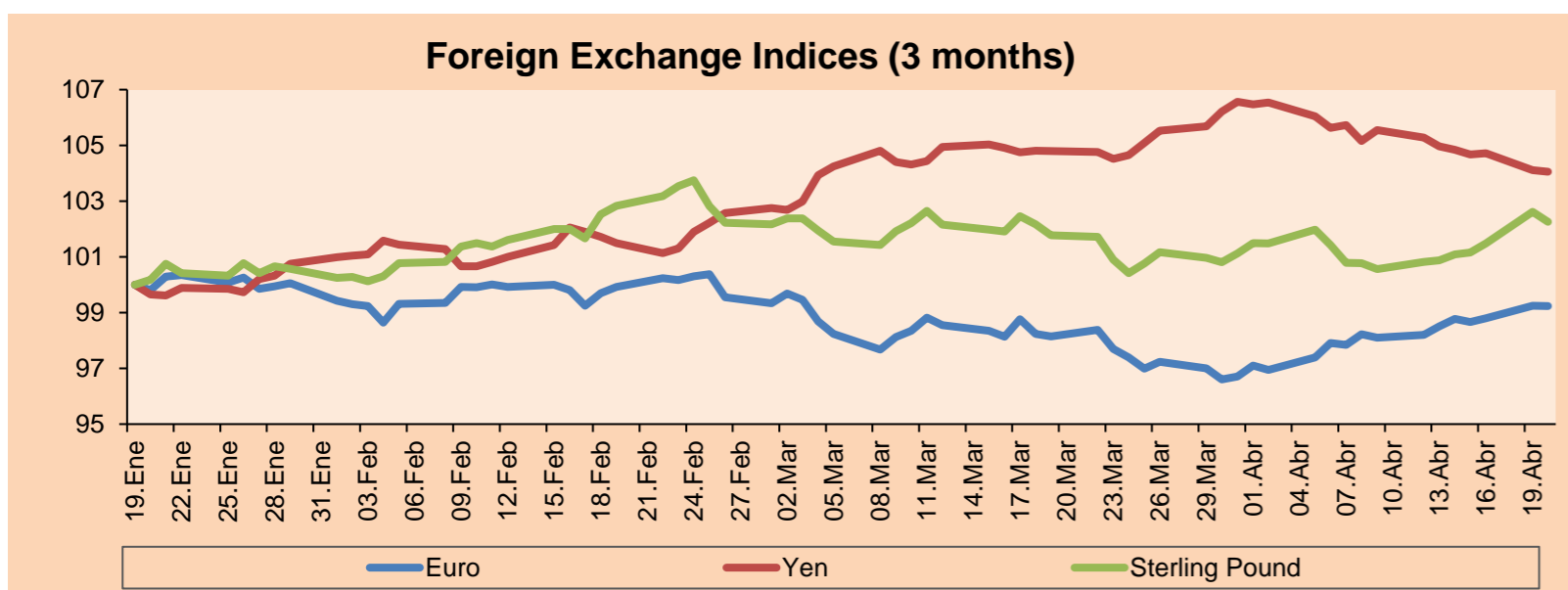
Major Asian indexes posted mixed results, due to constraints stemming from COVID19 issues, as well as optimism over quarterly results pointing to an economic recovery. South Korea's index hit a new record high, extending its streak for the seventh consecutive day, on speculation of a global economic rebound and robust first-quarter earnings. Japanese stocks ended lower, after concerns that the reintroduction of COVID19 blockades in the country's largest cities would slow the recovery. The Hong Kong index ended with its highest close in over a month led by gains in the financial sector and strong inflows from mainland China via Stock Connect. Finally, Australia's index ends lower after a streak of five consecutive days with Lynas -8.34%, as one of the hardest hit companies. Thus, S&P / ASX 200 -0.68%, KOSPI +0.68%, Nikkei -1.97%, CSI 300 -0.07%, Hang Seng +0.10%, Nifty 50 -0.44% closed mixed.



Source: Bloomberg

Currency	Price	1 D*	5 D*	1 M*	YTD*
▼ Euro	1.2036	-0.01%	0.74%	1.11%	-1.47%
▼ Yen	108.1100	-0.06%	-0.87%	-0.71%	4.71%
▼ Sterling Pound	1.3937	-0.35%	1.36%	0.47%	1.95%
▼ Yuan	6.4995	-0.17%	-0.68%	-0.15%	-0.42%
▼ Hong Kong Dollar	7.7613	-0.06%	-0.15%	-0.05%	0.11%
▲ Brazilian Real	5.5674	0.34%	-2.64%	1.40%	7.10%
▲ Argentine Peso	92.9747	0.05%	0.38%	1.77%	10.49%

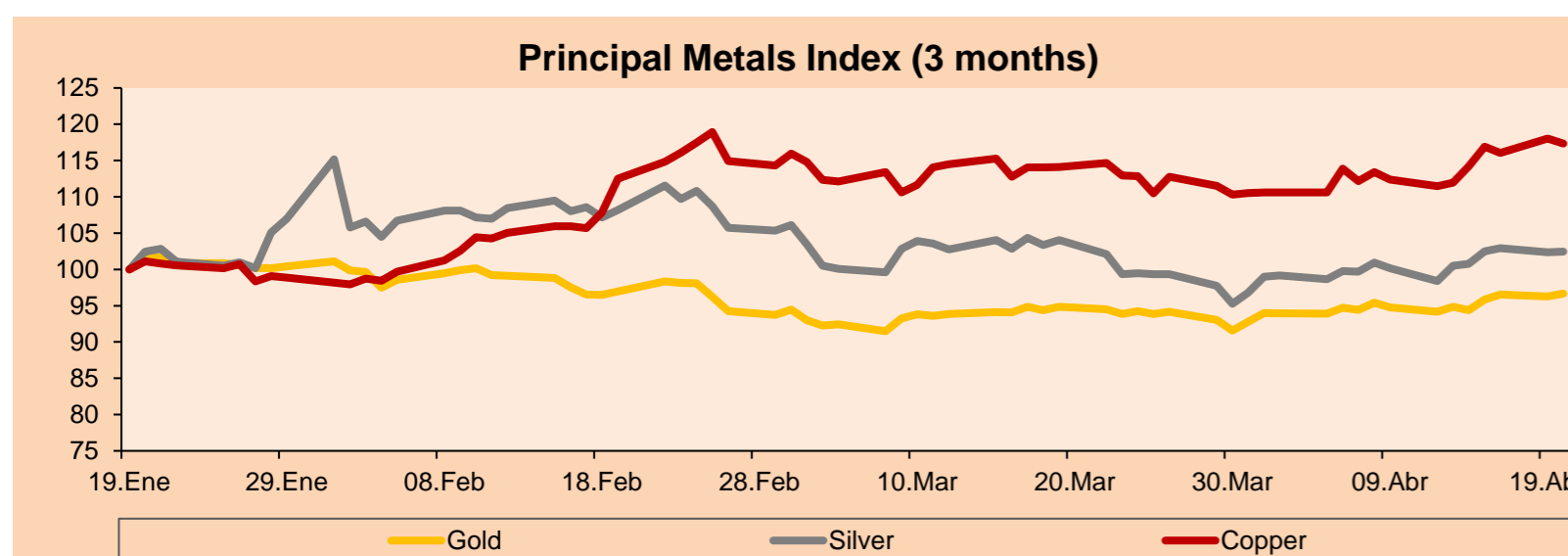
*Legend: Variation 1D: 1 Day; 5D: 5 Days; 1M: 1 Month; YTD: Var.% 12/31/20 to date



Base: 19/01/21=100
Source: Bloomberg

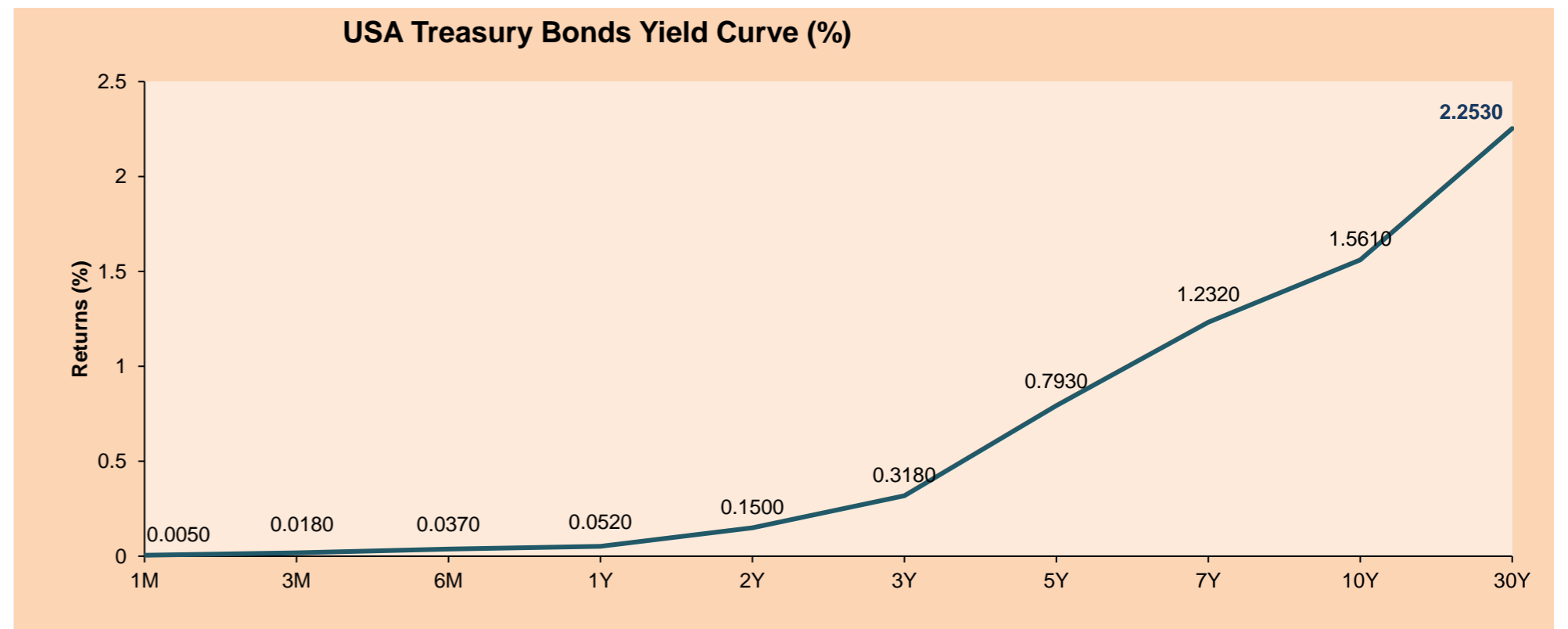
Commodities	Close	1 D*	5 D*	1 M*	YTD*
▲ Oro (US\$ Oz. T) (LME)	1,778.75	0.41%	1.90%	1.92%	-6.30%
▲ Plata (US\$ Oz. T) (LME)	25.84	0.07%	1.95%	-1.54%	-2.13%
▼ Cobre (US\$ TM) (LME)	9,328.75	-0.59%	4.80%	2.82%	20.39%
▼ Zinc (US\$ TM) (LME)	2,793.50	-1.19%	1.12%	-1.11%	2.35%
▼ Petróleo WTI (US\$ Barril) (NYM)	62.67	-1.20%	4.03%	2.22%	28.87%
▼ Estaño (US\$ TM) (LME)	28,149.50	0.34%	2.96%	0.35%	37.02%
▼ Plomo (US\$ TM) (LME)	2,007.00	-1.36%	2.18%	3.94%	1.58%
▲ Azúcar #11 (US\$ Libra) (NYB-ICE)	16.72	3.15%	7.87%	8.22%	17.83%
▼ Cacao (US\$ TM) (NYB-ICE)	2,419.00	-2.93%	-0.90%	-3.47%	-3.66%
▲ Café Arábica (US\$ TM) (NYB-ICE)	134.45	1.83%	1.89%	2.59%	1.97%

*Leyenda: Variación 1D: 1 Día; 5D: 5 Días; 1M: 1 Mes; YTD: Var.% 31/12/20 a la fecha



Base: 19/01/21=100
Source: Bloomberg

ETFs	Curr.	Close	1D	5D	30 D	YTD	Exchange
SPDR S&P 500 ETF TRUST	USD	412.17	-0.73%	-0.17%	5.83%	10.24%	NYSE Arca
ISHARES MSCI EMERGING MARKET	USD	53.71	-0.81%	0.49%	-0.68%	3.95%	NYSE Arca
ISHARES IBOXX HIGH YLD CORP	USD	87.01	-0.17%	-0.18%	1.10%	-0.33%	NYSE Arca
FINANCIAL SELECT SECTOR SPDR	USD	34.64	-1.87%	-0.94%	1.23%	17.50%	NYSE Arca
VANECK GOLD MINERS	USD	36.20	1.15%	4.75%	6.82%	0.50%	NYSE Arca
ISHARES RUSSELL 2000 ETF	USD	217.19	-2.05%	-1.79%	-4.30%	10.78%	NYSE Arca
SPDR GOLD SHARES	USD	166.48	0.36%	1.87%	1.98%	-6.66%	NYSE Arca
ISHARES 20+ YEAR TREASURY BO	USD	139.50	0.46%	0.74%	3.53%	-11.56%	NASDAQ GM
INVESTCO QQQ TRUST SERIES 1	USD	336.41	-0.73%	-1.23%	7.43%	7.23%	NASDAQ GM
ISHARES NASDAQ BIOTECHNOLOGY	USD	151.58	0.00%	1.59%	-2.76%	0.06%	NASDAQ GM
ENERGY SELECT SECTOR SPDR	USD	47.07	-2.65%	-1.65%	-4.97%	24.20%	NYSE Arca
PROSHARES ULTRA VIX ST FUTUR	USD	4.88	2.95%	4.05%	-27.38%	-54.18%	Cboe BZX
UNITED STATES OIL FUND LP	USD	42.74	-1.34%	3.24%	2.32%	29.48%	NYSE Arca
ISHARES MSCI BRAZIL ETF	USD	35.02	-0.71%	4.07%	2.25%	-5.53%	NYSE Arca
SPDR S&P OIL & GAS EXP & PR	USD	74.00	-4.50%	-3.65%	-11.64%	26.50%	NYSE Arca
UTILITIES SELECT SECTOR SPDR	USD	67.72	1.27%	3.15%	8.87%	8.01%	NYSE Arca
ISHARES US REAL ESTATE ETF	USD	97.56	1.05%	2.65%	8.35%	13.91%	NYSE Arca
SPDR S&P BIOTECH ETF	USD	128.29	-0.33%	-0.48%	-11.57%	-8.87%	NYSE Arca
ISHARES IBOXX INVESTMENT GRA	USD	130.98	0.19%	-0.27%	1.83%	-5.18%	NYSE Arca
ISHARES JP MORGAN USD EMERGI	USD	110.86	-0.25%	0.47%	1.44%	-4.36%	NASDAQ GM
REAL ESTATE SELECT SECT SPDR	USD	41.99	1.11%	2.87%	8.67%	14.85%	NYSE Arca
ISHARES CHINA LARGE-CAP ETF	USD	46.77	-0.28%	0.71%	-2.54%	0.73%	NYSE Arca
CONSUMER STAPLES SPDR	USD	69.92	0.55%	1.45%	5.33%	3.66%	NYSE Arca
VANECK JR GOLD MINERS	USD	49.91	1.11%	2.93%	2.76%	-7.98%	NYSE Arca
SPDR BBG BARC HIGH YIELD BND	USD	108.70	-0.18%	-0.13%	1.06%	-0.22%	NYSE Arca
VANGUARD REAL ESTATE ETF	USD	97.10	0.82%	2.47%	7.30%	14.33%	NYSE Arca
GRAYSCALE BITCOIN TRUST BTC	USD	47.01	-1.96%	-14.42%	-11.23%	46.91%	OTC US



Source: Bloomberg

LIMA

Stocks

Ticker	Currency	Price	1D*	5D*	30D*	YTD*	Frequency	Volume (US\$)	Beta	Dividend Yield (%)	Price Earning	Market Cap. (M US\$)	Economic Sector*	Index Weight
▼ ALICORC1 PE**	S/.	7.10	-0.13%	0.22%	-2.00%	-3.39%	100.00%	2,197,816	0.73	3.52	18.54	1,641.29	Industrial	3.53%
▼ ATACOB1 PE**	S/.	0.15	0.00%	0.00%	-5.06%	8.70%	22.22%	725	1.09	0.00	-	38.38	Mining	1.02%
▼ BACKUS1 PE**	S/.	20.00	-11.89%	-12.85%	-11.50%	-0.74%	88.89%	244,521	0.55	1.76	9.59	8,107.89	Industrial	0.82%
▼ BAP PE**	US\$	126.84	-5.52%	-12.48%	-13.51%	-21.02%	100.00%	10,632,460	1.62	6.94	-	11,971.45	Diverse	5.82%
▼ BVN PE**	US\$	10.30	-1.53%	-4.19%	-6.11%	-14.17%	100.00%	4,376,346	1.11	0.00	-	2,839.04	Mining	5.88%
▼ CASAGRC1 PE**	S/.	5.60	-5.08%	-8.94%	-3.45%	17.89%	88.89%	88,152	0.57	4.03	10.05	127.76	Agricultural	1.31%
▼ BBVAC1 PE**	S/.	2.05	-8.07%	-15.64%	-15.29%	-5.53%	100.00%	459,383	0.71	2.20	21.45	3,625.06	Finance	2.85%
▼ CORAREI1 PE**	S/.	0.91	-7.14%	-23.53%	-20.87%	2.25%	94.44%	242,526	0.73	10.61	5.43	373.49	Industrial	1.72%
▼ CPACASC1 PE**	S/.	5.25	-2.78%	-7.73%	-11.47%	-0.94%	88.89%	296,352	0.61	4.38	37.50	659.96	Industrial	2.38%
▼ CVERDEC1 PE**	US\$	20.00	-4.76%	-14.53%	-23.66%	-4.40%	100.00%	2,079,671	1.07	2.86	25.50	7,001.12	Mining	5.25%
▼ ENGEPEC1 PE**	S/.	2.13	-8.97%	-15.48%	-19.32%	6.50%	94.44%	453,435	0.49	13.39	13.02	1,637.61	Public Services	1.44%
▼ ENDISPC1**	S/.	5.30	-3.64%	-11.67%	-12.40%	-1.85%	55.56%	1,451,534	0.49	3.22	12.43	916.61	Public Services	0.98%
▼ FERREYC1 PE**	S/.	1.82	-8.54%	-14.55%	-19.11%	4.60%	100.00%	633,522	0.63	10.01	12.10	480.93	Diverse	4.90%
▼ AENZAC1 PE**	S/.	1.40	-9.68%	-20.00%	-20.00%	-19.54%	77.78%	229,605	0.84	0.00	-	330.60	Diverse	4.05%
▼ IFS PE**	US\$	26.79	-8.25%	-15.49%	-9.19%	-13.41%	100.00%	480,112	1.27	6.53	29.80	3,092.84	Diverse	7.22%
▼ INRETC1 PE**	US\$	36.10	-4.55%	-10.97%	-17.95%	-7.91%	100.00%	4,179,373	0.64	1.56	45.28	3,711.34	Diverse	5.28%
▼ LUSURC1 PE**	S/.	12.00	-7.69%	-15.79%	-12.73%	-52.94%	94.44%	44,122	0.68	7.17	12.08	1,582.60	Public Services	1.81%
▼ MINSUR1 PE**	S/.	2.40	-5.88%	-14.29%	-14.89%	29.73%	94.44%	935,089	0.81	0.00	64.19	1,873.95	Mining	3.09%
▼ PML PE**	US\$	0.13	-7.69%	-14.29%	-12.00%	24.53%	83.33%	56,352	1.47	0.00	-	34.87	Mining	2.12%
▼ RELAPAC1 PE**	S/.	0.10	-15.00%	-20.31%	-24.44%	47.83%	100.00%	73,707	0.61	0.00	-	229.82	Industrial	2.12%
▼ SCCO PE**	US\$	71.25	-4.75%	0.30%	-4.12%	8.12%	100.00%	221,212	0.92	2.39	33.12	55,081.47	Mining	2.14%
▼ SIDERC1 PE**	S/.	0.86	-9.47%	-25.22%	-15.69%	1.18%	94.44%	25,180	0.83	26.10	6.89	286.00	Industrial	1.43%
▼ TV PE**	US\$	0.14	-6.54%	-9.49%	-9.49%	-2.72%	94.44%	224,524	1.46	0.00	-	141.44	Mining	2.93%
▼ UNACEMC1 PE**	S/.	1.40	-6.04%	-16.17%	-21.35%	-9.68%	100.00%	835,961	0.94	0.93	30.67	689.37	Industrial	3.00%
▼ VOLCABC1 PE**	S/.	0.69	-9.21%	-16.87%	-16.87%	32.69%	100.00%	1,577,852	0.99	0.00	-	761.81	Mining	5.90%
▼ NEXAPEC1 PE**	S/.	3.00	-4.76%	-12.54%	-20.00%	6.01%	61.11%	230,268	1.11	0.00	-	1,075.86	Mining	1.56%

Quantity of shares: 26
Source: Bloomberg, Economática
* Bloomberg Industry Classification System
** PER is used in the stock market and original currency of the instrument
*Legend: Variation 1D: 1 Day; 5D: 5 Days, 1M: 1 Month; YTD: Var.% 12/31/20 to date

Up 0
Down 25
Hold 1

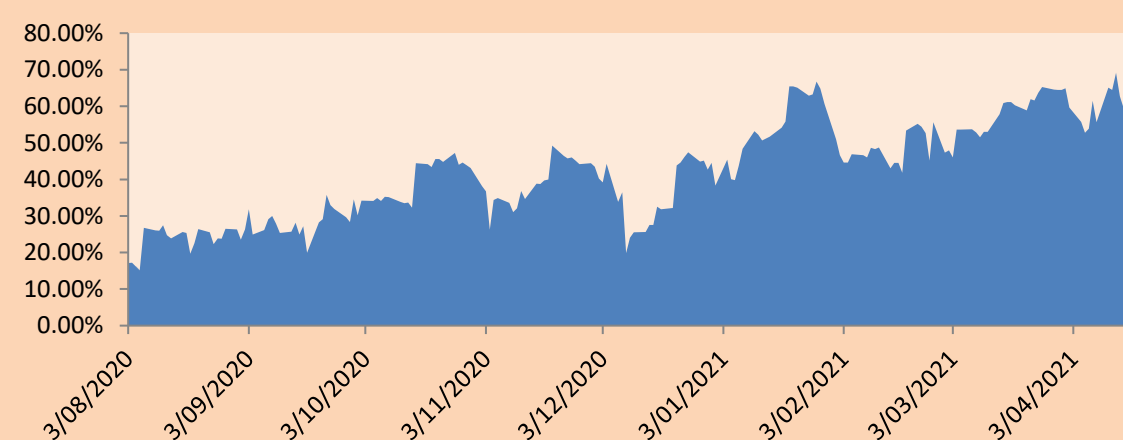
Sectorial Indices

	Close	1D*	5D*	30D*	YTD*	Beta
▼ S&P/BVLMining	410.56	-3.86%	-2.02%	-7.48%	5.29%	0.90
▼ S&P/BVLConsumer	1,057.79	-4.07%	-9.36%	-14.26%	-2.83%	0.47
▼ S&P/BVLIndustrials	186.81	-5.68%	-12.83%	-16.01%	-1.97%	0.64
▼ S&P/BVLFinancials	847.82	-5.43%	-11.39%	-13.48%	-18.00%	1.66
▼ S&P/BVLConstruction	194.25	-6.28%	-13.83%	-16.29%	-7.11%	0.69
▼ S&P/BVLPublicSvcs	597.73	-4.51%	-7.67%	-8.76%	-2.67%	0.25
▼ S&P/BVLElectricUtil	583.54	-4.51%	-7.67%	-8.76%	-2.67%	0.25

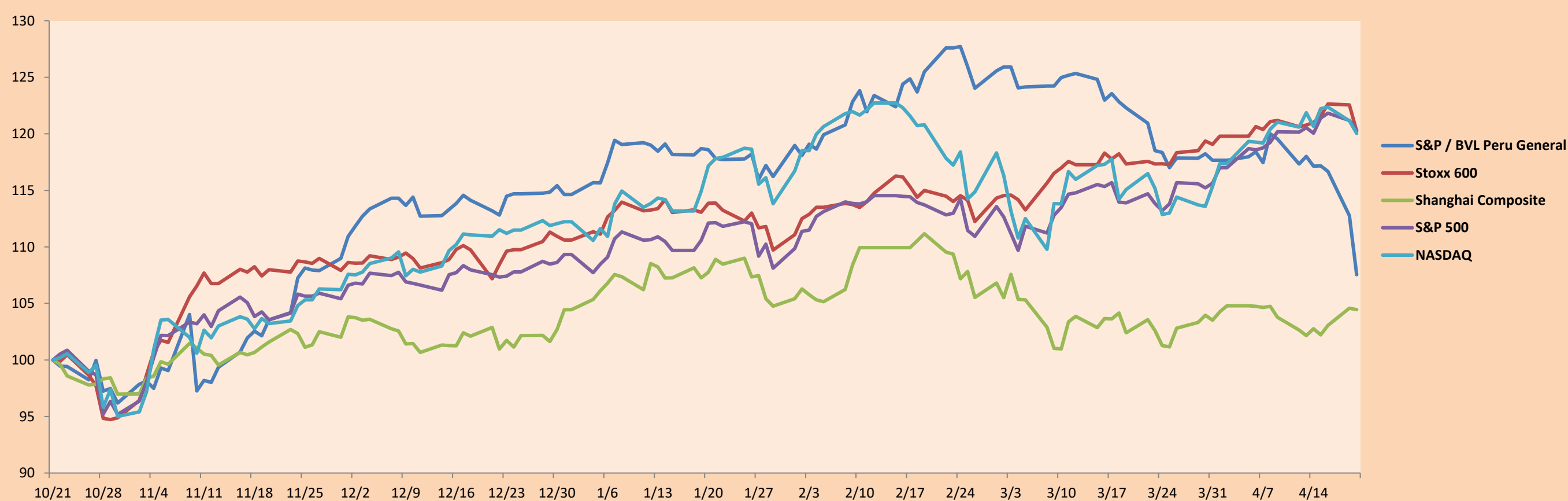
S&P/BVLConstructionTRPEN

*Legend: Variation 1D: 1 Day; 5D: 5 Days, 1M: 1 Month; YTD: Var.% 12/31/20 to date

Correlation Graph of Returns of Mining Index against Metallic Index of London (3 months)



Indices (6 months)



Base: 21/10/20=100
Source: Bloomberg

Capital Market Laboratory Coordinator: Economist Bruno Bellido
Collaboration: María Camarena, Alonso García, Nicolás Muñoz, Adrián Paredes y Jairo Valverde
email: pulsobursatil@ulima.edu.pe
facebook: www.facebook.com/pulsobursatil.ul

SOVEREIGN RATING

RISK RATINGS

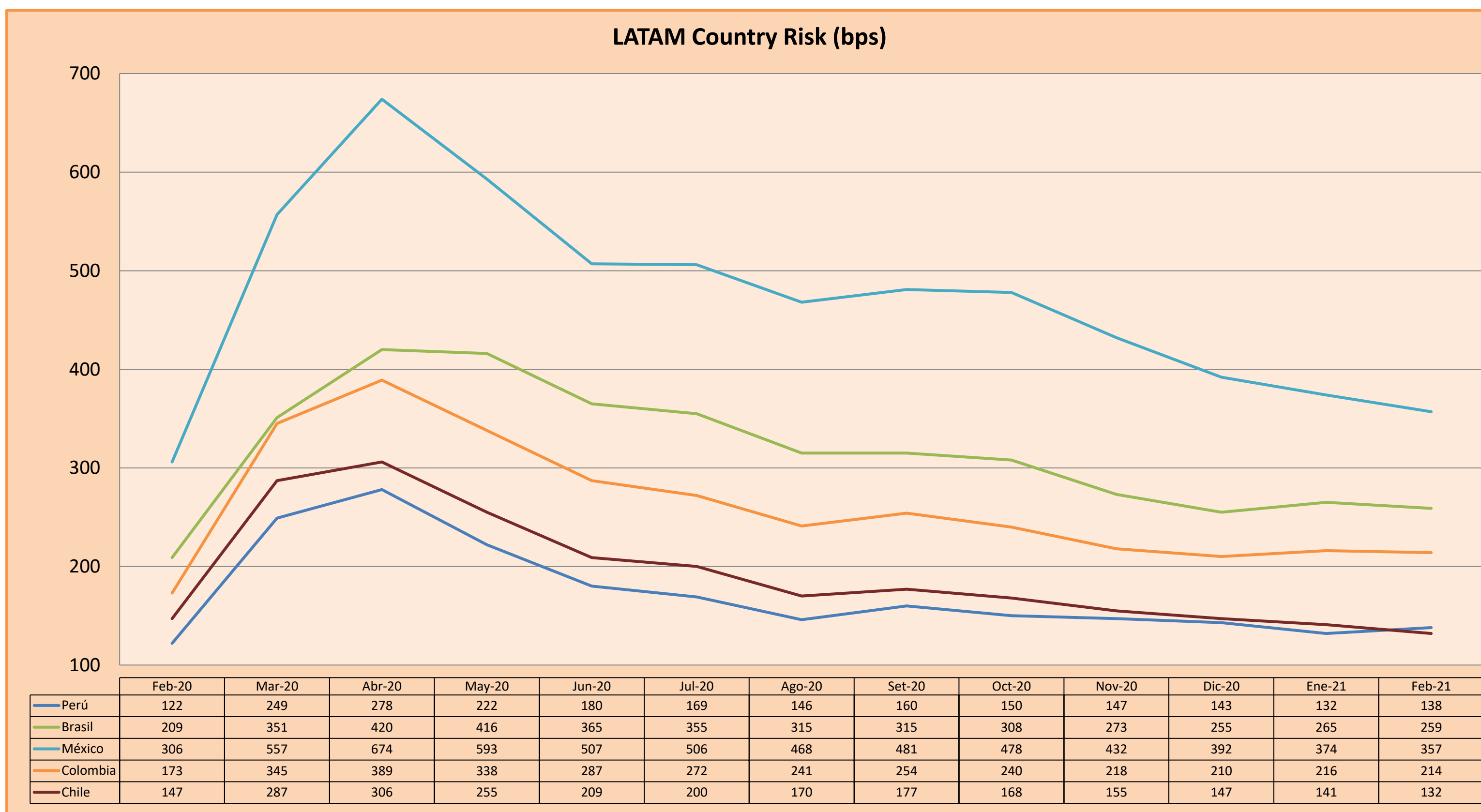
Moody's	S&P	Fitch	
Aaa	AAA	AAA	Prime
Aa1	AA+	AA+	High credit quality
Aa2	AA	AA	
Aa3	AA-	AA-	
A1	A+	A+	Medium-high grade, with low credit risk
A2	A	A	
A3	A-	A-	
Baa1	BBB+	BBB+	Moderate Credit Risk
Baa2	BBB	BBB	
Baa3	BBB-	BBB-	
Ba1	BB+	BB+	It has speculative elements and it is subject to substantial credit risk
Ba2	BB	BB	
Ba3	BB-	BB-	
B1	B+	B+	It is considered speculative and it has high credit risk
B2	B	B	
B3	B-	B-	
Caa1	CCC+	CCC	
Caa2	CCC	CCC	
Caa3	CCC-	CCC	
Ca	CC	CC	Very close to default or in default
	C	C	
C	D	DDD DD D	

Source: Bloomberg

Latin America Credit Rating			
Clasificadora de riesgo			
Country	Moody's	Fitch	S&P
Peru	A3	BBB+	BBB+
México	Ba2	BB-	BB-
Venezuela	C	WD	SD
Brazil	Ba2	BB-	BB-
Colombia	Baa2	BBB-	BBB-
Chile	A1	A-	A
Argentine	Ca	WD	CCC+
Panama	Baa2	BBB-	BBB

Source: Bloomberg

LATAM Country Risk (bps)



Source: BCRP

Capital Market Laboratory Coordinator: Economist Bruno Bellido
Collaboration: Maria Camarena, Alonso García, Nicolas Muñoz, Adrian Paredes y Jairo Valverde
email: pulsobursatil@ulima.edu.pe
facebook: www.facebook.com/pulsobursatil.ul