

MILA

Peru

The BVL General Index ended today's session with a negative result of -0.85%. Then, the S&P / BVL Peru SEL varied by -0.94% while the S&P / BVL LIMA 25 by + 1.08%. The PEN spot reached S / 3.7724. Headline: Peru Country Risk under four basis points and closed at 1.50 percentage points.

Chile:

The IPSA index ended the day with a negative return of -3.43%. The most affected sectors of the day were Technology (-4.89%) and Industrial (-4.44%). The worst performing stocks were Inversiones de la Construcción SA (-8.63%) and Grupo Security SA (-6.75%). Owner: Wealth Tax: Construction Commission approves transitory VAT reduction on basic goods and products

Colombia:

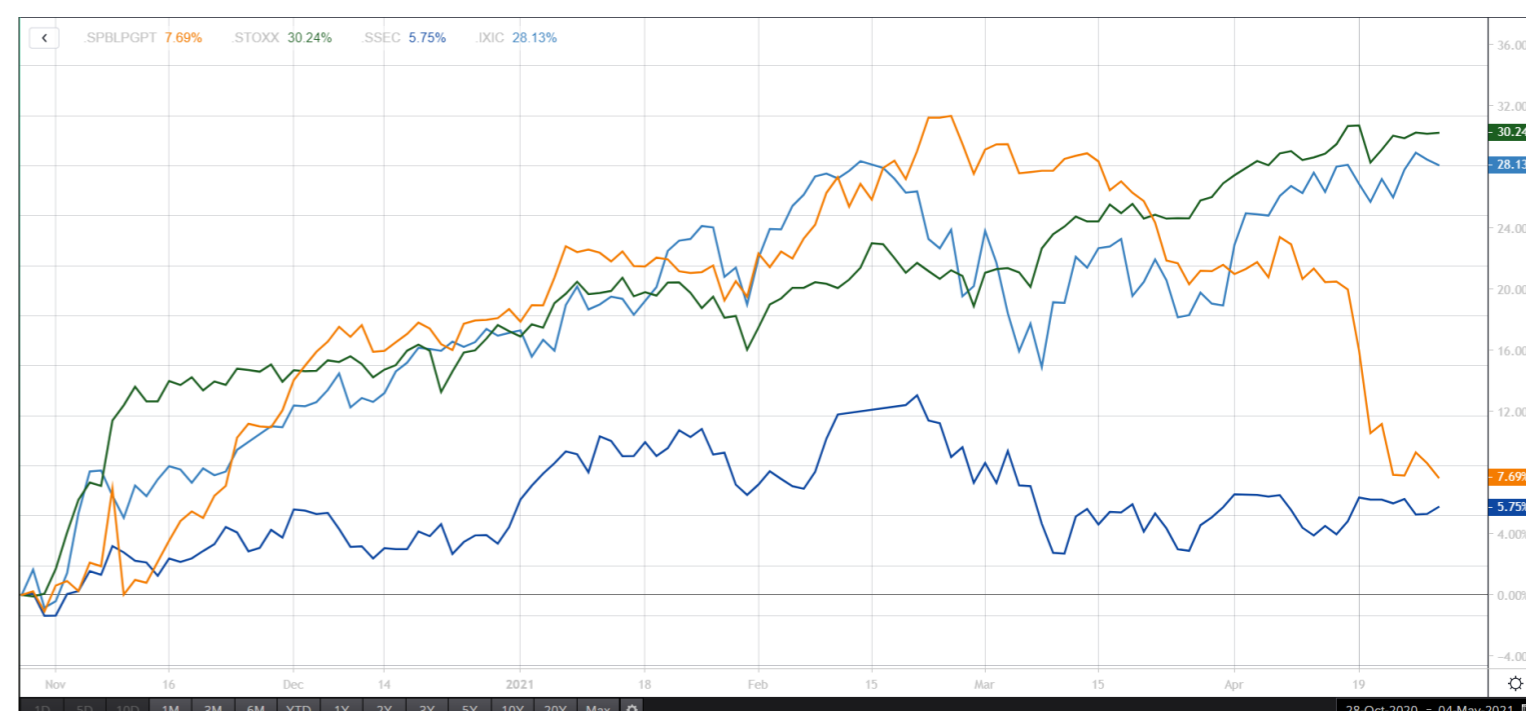
The COLCAP index closed today with a negative return of 0.54%. The most affected sectors of the day were Finance (-1.50%) and Utilities (-0.88%). The worst performing stocks were Organización Terpel SA (-3.57%) and Promigas SA ESP (-3.52%). Headline: Microcredit never lowered interest in the pandemic

Mexico:

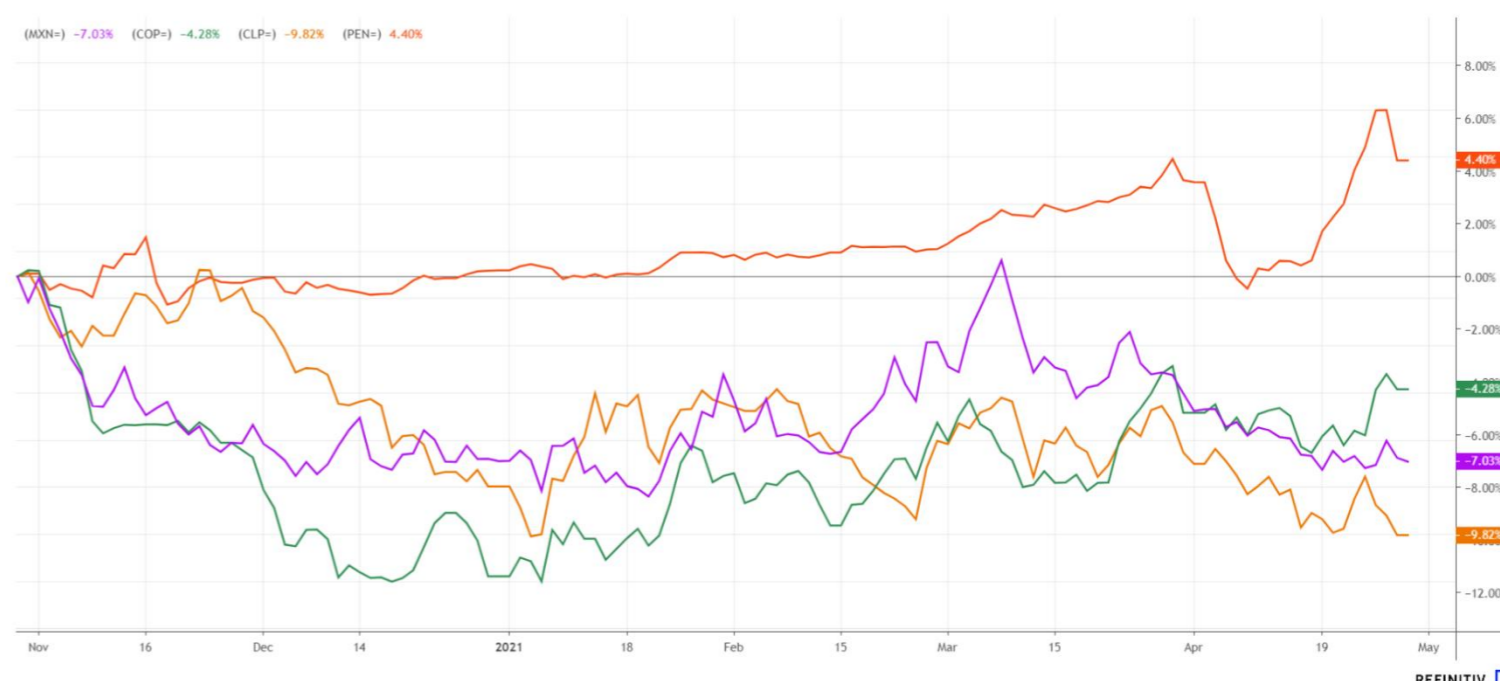
The IPC index closed the day with a negative return of -0.34%. The most affected sectors of the day were Basic Materials (-2.28%) and Technology (-1.90%). The worst performing stocks were Grupo México SAB de CV (-3.38%) and Megacable Holdings SAB de CV (-2.58%). Headline: Mexican exports have their best 'rebound' in three years in March

Lima, April 28, 2021

MILA: Stock Indices (6 months)



MILA: Foreign Exchange Indices (3 Months)



Currency

RIC ▲	Nombre	Currency	1D	Ask Price	Bid Price
ARS=	Argentine Peso	▲ ARS	0.11 %	93.44	93.43
BRL=	Brazilian Real	▼ BRL	-0.01 %	5.3435	5.343
CLP=	Chilean Peso	▼ CLP		696.53	695.93
COP=	Colombian Peso	▲ COP		3697.88	3694.13
MXN=	Mexican Peso	▼ MXN	-0.10 %	19.931	19.901
PEN=	Peru Sol	▼ PEN	0.00 %	3.7724	3.7688

MILA: Main Indexes

RIC	Name		Last	Pct. Chng	Net. Chng	Close	Currency
.SPIPSA	S&P IPSA TR	▲	4586.27	-3.43 %	-162.73	4749.00	CLP
.SPCLXIGPA	S&P/CLX IGPA TR	▼	23156.14	-3.34 %	-800.97	23957.11	CLP
.COLSC	COLSC/d	▼	996.44	0.14 %	1.37	995.07	COP
.COLCAP	COLCAP Index	▼	1286.16	-0.54 %	-6.99	1293.15	COP
.SPBPLPGPT	S&P/BVL GENERA/d	▼	19021.89	-0.85 %	-163.31	19185.20	PEN
.SPBPLSPT	S&P/BVL SELECT/d	▼	513.33	-0.94 %	-4.89	518.22	PEN
.MXX	IPC/d	▲	48487.94	-0.66 %	-324.23	48812.17	MXN
.SPMILAPN	SP MILA40 Net TR		935.4209	-3.0000 %	-29.2666	964.6875	PEN

WORLD

RIC	Name	Last	Net. Chng	% Chng	Volume	Volume30d	Volume60d ▲	YTD%
/SPX	S&P 500 INDEX/d	4183.18	-3.54	-0.08%				11.38%
/SPIPSA	S&P IPSA TR	4586.27	-162.73	-3.43%				9.79%
/SPBLPGPT	S&P/BVL GENERA/d	19021.89	-163.31	-0.85%				-8.65%
/MOEX	MOEX Russia Ind.	3578.12						8.79%
/CSI300	CSI300 INDEX/d	5152.49120	33.24910	0.65%	20379	136600	166477	-1.13%
/BSESN	S&P SENSEX/d	49733.84				12718244	16485458	4.15%
/FCHI	CAC 40 INDEX/d	6306.980			69450159	78317533	83219996	13.61%
/IMXX	IPC/d	48487.94	-324.23	-0.66%	115918503	168840006	197894755	10.05%
/IBEX	IBEX 35 INDEX/d	8799.6	42.9	0.49%	218196687	184534218	198588332	8.99%
/GSPSTSE	S&P/TSX COMP I/d	19356.95	181.86	0.95%	191679514	228607673	256570208	10.99%
/STI	STRAITS TIMES/d	3229.96	10.40	0.32%	45275600	254696960	271342791	13.61%
/FTMIB	FTSE MIB/d	24459.57	-13.49	-0.06%	357370584	423896571	482786352	10.02%
/NSEI	NIFTY 50/d	14864.55				519796167	596797200	6.31%
/AXJO	S&P/ASX 200	7088.900	24.200	0.34%	169673728	579760540	613061913	7.62%
/FTSE	FTSE 100 INDEX/d	6963.67	18.70	0.27%	990231902	751924709	795777851	7.79%
/IXIC	NASDAQ COMPOSI/d	14051.031	-39.185	-0.28%	863068769	990032591	1147374343	9.00%
/TOPX	TOPIX INDEX	1909.06	5.51	0.29%	123708	1210025333	1307434167	5.78%
/STOXX	STXE 600 PR/d	439.92	0.07	0.02%	206103725	1973019349	2098439612	10.25%
/HSI	HANG SENG INDE/d	29336.92	265.58	0.91%	162341910	2009946831	2511695964	7.73%
/BVSP	BVSP BOVESPA I/d	121052.52	1664.15	1.39%	9081459	8622938367	9746379117	1.71%
/SSEC	SSE COMPOSITE/d	3465.61140	8.54310	0.25%	46577	27781789863	30359964235	-0.21%

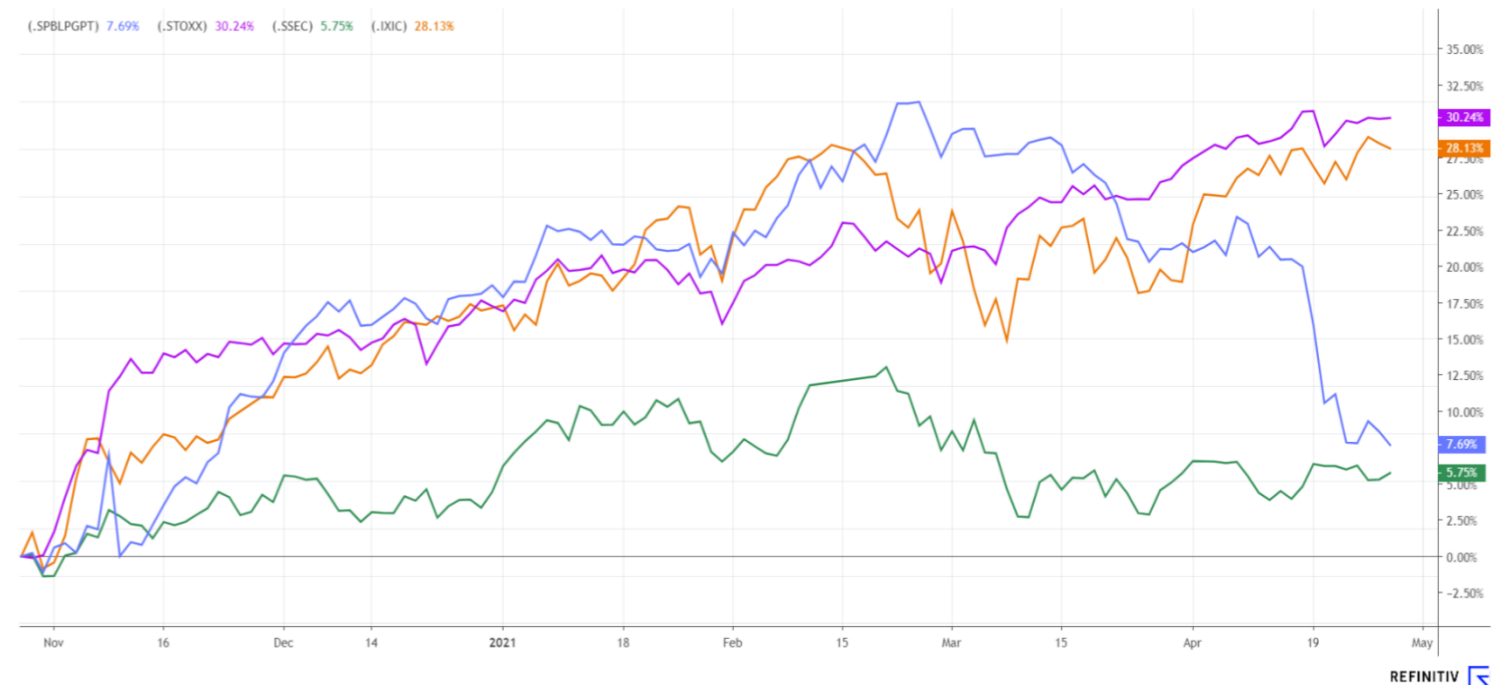
MAIN ETF's

RIC	Name	Last	% Chng	Net. Chng	Volume	Vol 30d	Volat. 30d	% YTD	% YTD (USD)
/SPY	SPDR S&P 500/d	417.40	-0.03%	-0.12	51,238,8...	80,455,434	11.31	11.56%	11.64%
/EFA	ISH MSCI EAFE/d	79.07	0.25%	0.20	14,288,6...	19,772,354	12.44	8.38%	8.37%
/HYG	ISH IBOXX \$ HI/d	87.38	0.19%	0.17	14,795,025	23,124,935	3.94	0.11%	0.09%
/XLF	SPDR FINANCL S/d	35.94	0.39%	0.14	35,771,677	52,820,821	15.72	21.88%	21.91%
/GDX	VNCK VCTR GLD /d	35.45	0.42%	0.15	20,209,764	18,500,420	27.66	-1.58%	-1.58%
/IWM	ISH RSL 2000/d	228.84	0.17%	0.39	16,222,739	30,200,517	24.90	16.62%	16.72%
/TAN	INVSC SOLAR/d	88.12	-2.98%	-2.71	1,437,024	1,918,261	46.51	-14.36%	-14.25%
/BIBB39.SA	NASDAQ BIOTC/d	56.10	-2.55%	-1.47	21,972			5.98%	
/BNO	US BRENT OIL F/d	16.96	0.71%	0.12	1,006,778	1,234,099	43.42	31.68%	31.68%
/DIA	SPDR DJI AVERA/d	338.37	-0.43%	-1.46	3,025,135	4,093,802	9.64	10.62%	10.65%
/SDY	SPDR S&P DIVDE/d	122.27	-0.01%	-0.01	337,030	430,612	10.70	15.42%	15.43%
/ZPDS.DE	E.II-S.US.CON./d	26.97	0.11%	0.03	225	6,181	11.72	4.45%	2.99%
/GBTC.PK	GRAYSCALE BI O/d	46.20	-0.81%	-0.38	4,295,155	8,956,342	71.66	44.38%	44.38%
/VNO	VANGUARD RL ES/d	97.85	-0.21%	-0.21	3,509,229	4,247,393	12.13	15.29%	15.21%
/FXI	ISH CHINA LG C/d	47.28	0.47%	0.22	11,296,183	18,978,715	19.47	1.83%	1.83%
/KXI	ISH GBL CONS S/d	59.51	0.12%	0.07	17,396	35,097	9.45	2.23%	2.11%

CURRENCY

RIC ▲	Nombre	Currency	1D	Ask Price	Bid Price
CAD=	Canadian Dollar	CAD	-0.22%	1.2316	1.2312
CNY=	Chinese Renminbi	CNY	-0.13%	6.4806	6.4771
EUR=	Euro	USD	0.21%	1.2127	1.2123
GBP=	British Pound	USD	0.29%	1.3936	1.3932
JPY=	Japanese Yen	JPY	-0.13%	108.62	108.59
KRW=	Korean Won	KRW	-0.30%	1110.23	1109.88

INDICES (6 MONTHS)



GLOBAL OVERVIEW

United States:

The main U.S. indices ended today's session with losses after the Federal Reserve said it will keep interest rates low and rejected the reduction of support for the economic recovery. Similarly, it signaled that bond purchases would continue as a measure to support the economic recovery. In individual stocks, Alphabet rose +2.90% reaching a new all-time high after the announcement of a \$50 billion share buyback; likewise Apple announced that its sales increased by 54% during the quarter. In contrast, Boeing -2.90%; Spotify Technology -12.00%; Texas Instruments -4.4% closed the day with losses after its earnings reports came in below analysts' expectations. As of today, 86% of S&P 500 components reporting earnings estimates beat expectations, according to Refinitiv data. Regarding commodities, WTI crude oil reached the highest level since March 17 after data showed an increase in gasoline demand. Thus, DOW -0.48%; S&P 500 -0.08%; NASDAQ -0.28% ended the session lower.

Europe:

Major European markets closed the day higher, following a series of positive results from leading financial companies. The pan-European STOXX 600 index ended broadly unchanged as investors remained cautious ahead of possible decisions by the U.S. Federal Reserve. However, banking stocks led gains among regional sectors. According to Tom Dorner, chief investment officer for equities at Aberdeen Standard Investments, "Europe's market has performed well for the year and its economic recovery will be strong". He added that "market rotation will continue to favor cyclical stocks such as banks and autos". On the other hand, data from Refinitiv IBES forecasts that European corporate earnings in the first quarter of 2021 will increase by 71.3% year-over-year, well above the forecast given last week of 61.2%. On the stock side, Reuters highlights Deutsche Bank +10.70% after reporting a €908 million profit for the first quarter, the strongest in seven years. Santander +2.70%, and Lloyds Banking Group +3.51%, after reporting better-than-expected earnings. Thus, the STOXX 600 +0.02%, CAC 40 +0.53%, FTSE 100 +0.27% and DAX +0.28% closed the day with positive performances.

Asia:

The major Asian indices ended today's session with slight gains as investors continue to digest financial information released in both Japan and Australia. Within China, the market has obtained a positive result as it is evaluating the expansion of a chip factory promoted by the Taiwanese company United Microelectronics Corp. Valued at 3.9 billion dollars. Meanwhile, in Hong Kong it closed higher thanks to a rise in Alibaba shares despite the news of investigation to its founder Jack Ma. In Japan, the retail sector rose 2.05% and they are reassessing with some skepticism being a host of the Olympics, but without an audience. On the other hand, the Korean market closed unchanged. Finally, in the Australian market, the natural resources sector fell 0.94%; Despite this, the iron boom continues with a rise of 0.21 cents, in turn, this week the inflation report was published with 0.6% inflation for the quarter. Thus, S & P / ASX 200 0.00%; SHANGHAI + 0.42%; KOSPI 0.00%; HANG SENG + 0.45%; NIKKEI + 0.21% ended today's session with slightly positive returns.

LIMA

RIC	Name		Moneda	Precio	1D	5D	30D	YTD	Beta	Dividend Yield ▲
/SPBLPGPT	S&P/BVL GENERA/d	🕒 ▼	PEN	19021.89	-0.85 %	-3.14 %	-16.11 %		1.00	Unable to collect...
/CVERDEC1.LM	CERRO VERDE/d	🕒 ▲	USD	19	5.03 %	-8.43 %	-24.56 %	-6.96 %	1.22	
/ENDISPC1.LM	ENEL DIST PERU/d	🕒 ▲	PEN	4.14	1.222 %	-14.64 %	-28.96 %	-21.07 %	0.50	
/UNACEMC1.LM	UNACEM/d	🕒 ▼	PEN	1.35	8.871 %	-3.57 %	-26.63 %	-12.29 %	1.13	0.84 %
/INRETC1.LM	INRETAIL PERU/d	🕒 ▲	USD	34.5	-1.43 %	-3.36 %	-23.16 %	-11.99 %	0.61	1.39 %
/BACKUSH1.LM	BACKUS JOHNSTO/d	🕒 ▲	PEN	18.8		-4.81 %	-20.00 %	-6.70 %	0.41	1.84 %
/SCCO.LM	SOUTHERN COPPE/d	🕒 ▲	USD	72.53	0.25 %	1.57 %	-6.50 %	10.99 %	1.08	2.30 %
/ALICORC1.LM	ALICORP/d	🕒 ▼	PEN	6.76	0.896 %	-0.47 %	-12.83 %	-1.86 %	0.74	3.50 %
/CPACASC1.LM	CEM PACASMAYO/d	🕒 ▼	PEN	5		-4.76 %	-15.97 %	-5.66 %	0.79	3.85 %
/BBVAC1.LM	BCO BBVA PERU/d	🕒 ▲	PEN	2.01	4.688 %	-9.87 %	-14.65 %	-5.60 %	0.79	3.98 %
/BVLAC1.LM	BOLSA DE LIMA/d	🕒	PEN	2.43		-1.62 %	-0.39 %	2.94 %	0.17	4.60 %
/CASAGRC1.LM	CASA GRANDE/d	🕒 ▲	PEN	4.46	0.677 %	-17.41 %	-24.41 %	-6.11 %	0.98	4.76 %
/BAP.LM	CREDICORP/d	🕒 ▲	USD	120.45	-0.91 %	-3.83 %	-21.27 %	-25.00 %	1.12	5.18 %
/IFS.LM	INTERCORP/d	🕒 ▼	USD	25.98	-2.70 %	-5.53 %	-15.65 %	-13.61 %	1.22	5.22 %
/ENGIEC1.LM	ENGIE ENERG PE/d	🕒 ▼	PEN	6.29		-6.81 %	-12.98 %	-6.76 %	0.36	5.25 %
/CORAREC1.LM	ACEROS AREQUIP/d	🕒	PEN	1.26		-0.79 %	-8.49 %	4.90 %	0.58	5.68 %
/CORAREI1.LM	ACEROS AREQUIP/d	🕒 ▲	PEN	0.9	7.143 %	-4.26 %	-18.84 %	3.96 %	1.26	5.68 %
/FERREYC1.LM	FERREYCORP/d	🕒 ▲	PEN	1.7	3.659 %	-5.56 %	-18.65 %	2.39 %	1.19	8.81 %
/SIDERC1.LM	SIDER PERU/d	🕒 ▲	PEN	0.89	14.103 %	3.49 %	-3.03 %	16.37 %	1.20	10.63 %
/ENGEPEC1.LM	ENEL GEN PERU/d	🕒 ▲	PEN	1.89		-7.80 %	-27.60 %	-2.99 %	0.52	10.99 %
0#/SPBLPGPT				Unable to ...		Unable t...	Unable to ...	Unable to...	Unable ...	Unable to resolv...
1#/SPBLPGPT				Unable to ...		Unable t...	Unable to ...	Unable to...	Unable ...	Unable to resolv...
2#/SPBLPGPT				Unable to ...		Unable t...	Unable to ...	Unable to...	Unable ...	Unable to resolv...
/ATACOBC1.LM	ATACOCHA/d	🕒 ▼	PEN	0.11	-0.901 %	-15.38 %	-29.03 %	-20.29 %	1.90	
/BVN.LM	BUENAVENTURA/d	🕒 ▲	USD	9.87	-0.40 %	-6.00 %	-11.08 %	-17.75 %	1.33	
/AENZAC1.LM	AENZA/d	🕒 ▼	PEN	1.2	-4.000 %	-12.41 %	-31.43 %	-31.03 %	1.50	
/MINSURI1.LM	MINSUR/d	🕒 ▲	PEN	2.24	4.186 %	-6.67 %	-20.57 %	21.08 %	1.26	
/NEXAPEC1.LM	NEXA RES PERU/d	🕒	PEN	2.7		-11.48 %	-29.69 %	-4.59 %	1.67	
/PML.LM	PANORO MINERAL/d	🕒 ▼	USD	0.11		-19.12 %	-20.29 %	3.77 %	2.02	
/RELAPAC1.LM	RELAPA SAA/d	🕒 ▲	PEN	0.115	9.524 %	9.52 %	-14.18 %	66.67 %	1.93	
/RIMSEGC1.LM	RIMAC SEGUROS/d	🕒	PEN	1.05			-9.48 %	6.36 %	0.55	
/TV.LM	TREVALI MINING/d	🕒 ▲	USD	0.161	1.90 %	7.33 %	7.33 %	9.52 %	2.47	
/VOLCABC1.LM	VOLCAN MINERA/d	🕒 ▲	PEN	0.69	7.813 %	-6.76 %	-18.82 %	32.69 %	1.67	

*Source : REfinitiv

RATING SOBERANO

CLASIFICACIONES DE RIESGO

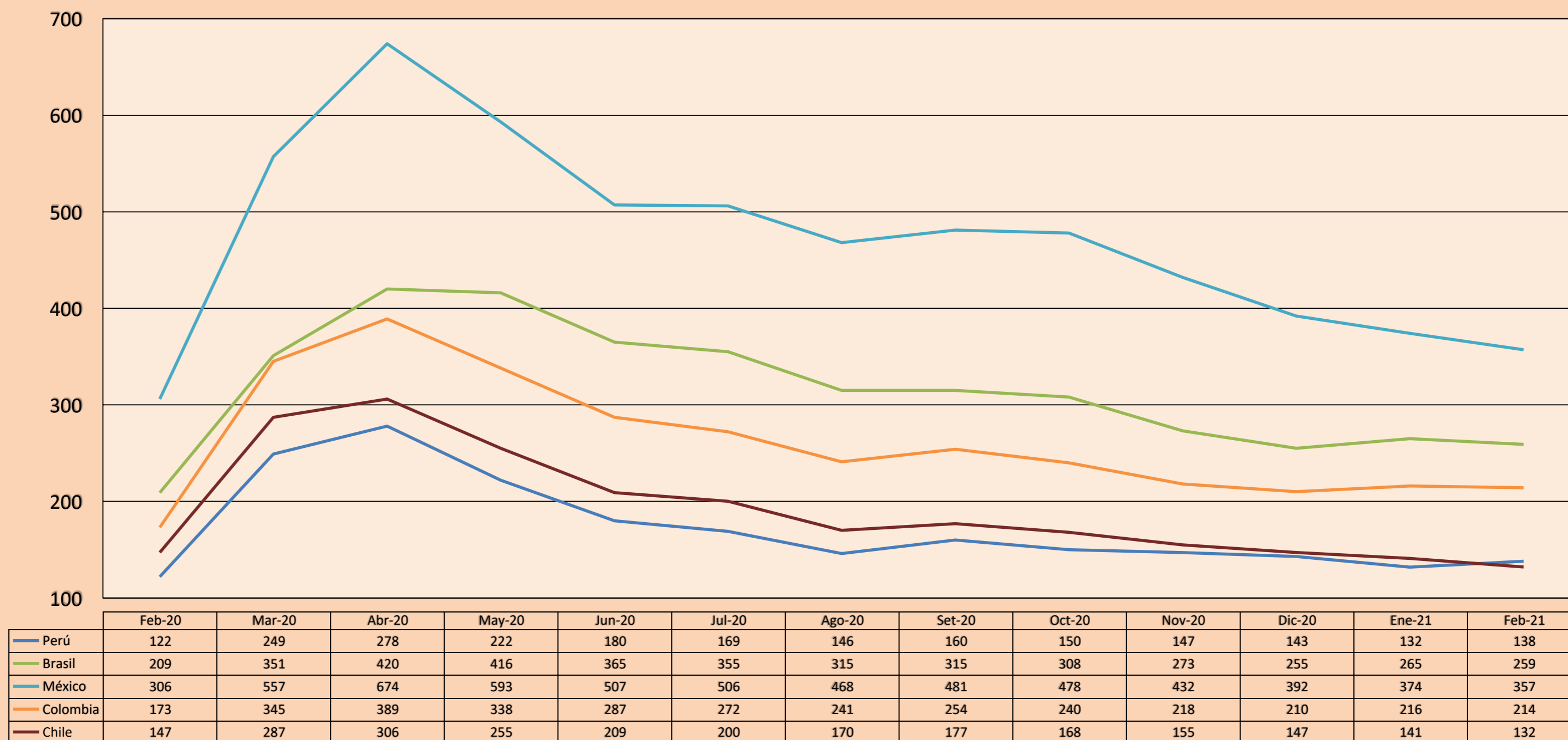
Moody's	S&P	Fitch		32
Aaa	AAA	AAA	Prime	
Aa1	AA+	AA+	Alto Grado	
Aa2	AA	AA		
Aa3	AA-	AA-		
A1	A+	A+	Grado Alto Medio	
A2	A	A		
A3	A-	A-		
Baa1	BBB+	BBB+	Grado Bajo Medio	
Baa2	BBB	BBB		
Baa3	BBB-	BBB-		
Ba1	BB+	BB+	Sin Grado de Inversión Especulativo	
Ba2	BB	BB		
Ba3	BB-	BB-		
B1	B+	B+	Altamente Especulativo	
B2	B	B		
B3	B-	B-		
Caa1	CCC+	CCC	Riesgo Sustancial Extremadamente Especulativo	
Caa2	CCC			
Caa3	CCC-			
Ca	CC	DDD	Poca esperanzas de Pago	
C	C			
	D			
		DD	Impago	
		D		

Source : Bloomberg

Rating Crédito Latinoamérica			
Clasificadora de riesgo			
País	Moody's	Fitch	S&P
Perú	A3	BBB+	BBB+
México	Baa1	BBB-	BBB
Venezuela	C	WD	SD
Brazil	Ba2	BB-	BB-
Colombia	Baa2	BBB-	BBB-
Chile	A1	A-	A
Argentina	Ca	WD	CCC+
Panamá	Baa2	BBB-	BBB

Source: Bloomberg

Riesgo País Latinoamérica (pbs)



Source: BCRP

Capital Markets Laboratory Coordinator: Economist Bruno Bellido
Collaboration: María Camarena, Alonso García, Adrian Paredes y Jairo Valverde
email: pulsobursatil@ulima.edu.pe
Facebook: www.facebook.com/pulsobursatil.ul