

PULSO BURSÁTIL

FACULTAD DE CIENCIAS EMPRESARIALES Y ECONÓMICAS
CARRERA DE ECONOMÍA
LABORATORIO DE MERCADO DE CAPITALES

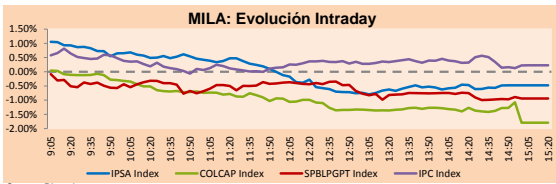


MILA

Lima, May 13, 2021

Main Indexes	Close	1 D	5 D	1 M	YTD	Cap. Burs. (US\$ bill)
▼ IPSA (Chile)	4,443.64	-0.93%	-4.04%	-9.35%	6.38%	128.85
▼ IGPA (Chile)	22,451.02	-0.81%	-3.88%	-9.20%	6.87%	153.80
▲ COLSC (Colombia)	987.30	0.24%	3.77%	-3.29%	-6.77%	4.57
▲ COLCAP (Colombia)	1,262.29	-1.79%	-0.34%	-3.83%	-12.21%	74.38
▼ S&P/BVL (Perú)*	21,515.26	-0.94%	10.22%	0.37%	3.33%	112.11
▼ S&P/BVL SEL (Perú)	573.56	-0.46%	9.87%	1.94%	4.02%	100.49
▲ S&P/BVL LIMA 25	28,402.86	0.33%	10.39%	0.72%	12.72%	111.21
▲ IPC (México)	48,829.31	0.17%	-0.22%	2.79%	10.81%	307.39
▼ S&P MILA 40	521.04	-1.14%	0.50%	-6.12%	-2.54%	6,128.37

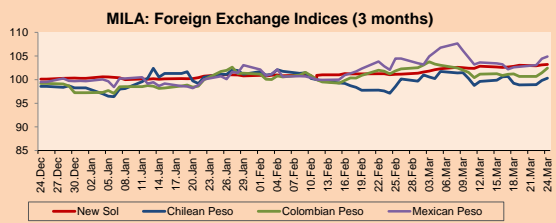
*Legend: Variation 1D: 1 day; 5D: 5 days; 1M: 1 Month; YTD: Var% 12/31/20 to date



Source: Bloomberg

Currency	Price	1D*	5D*	30 D*	YTD*
▼ New Sol (PEN)	3,658.8	-1.60%	-4.14%	0.71%	1.13%
▲ Chilean Peso (CLP)	707.93	0.08%	1.23%	-0.07%	-0.54%
▼ Colombian Peso (COP)	3,729.79	-0.46%	-2.39%	1.73%	8.75%
▼ Mexican Peso (MXN)	19.94	-1.13%	-0.90%	-0.79%	0.11%

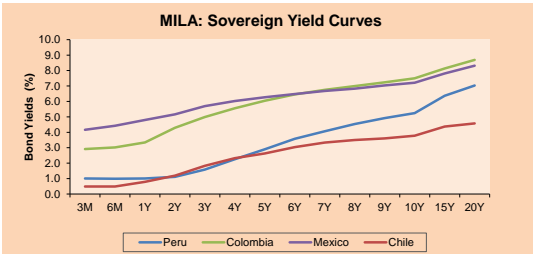
*Legend: Variation 1D: 1 day; 5D: 5 days; 1M: 1 Month; YTD: Var% 12/31/20 to date



Base: 11/02/21=100

Source: Bloomberg

Fixed Income	Currency	Price	Bid Yield (%)	Ask Yield (%)	Duration
PERU 7.35 07/21/25	USD	123.086	1.68	1.55	3.66
PERU 4.125 08/25/27	USD	111.164	2.26	2.16	5.61
PERU 8.75 11/21/33	USD	155.388	3.34	3.27	8.59
PERU 6.55 03/14/37	USD	134.724	3.67	3.62	10.40
PERU 5.625 11/18/2050	USD	133.092	3.78	3.74	16.23
CHILE 2.25 10/30/22	USD	102.642	0.54	0.30	1.44
CHILE 3.125 01/21/26	USD	108.11	1.38	1.28	4.38
CHILE 3.625 10/30/42	USD	104.647	3.34	3.30	15.45
COLOM 11.85 03/09/28	USD	159.869	2.46	2.15	5.23
COLOM 10.375 01/28/33	USD	149.631	4.89	4.68	7.69
COLOM 7.375 09/18/37	USD	131.449	4.65	4.57	10.49
COLOM 6.125 01/18/41	USD	118.585	4.70	4.64	12.14
MEX 4 10/02/23	USD	118.585	4.699	4.64	12.14
MEX5.55 01/45	USD	117.156	4.40	4.35	14.00



Source: Bloomberg

Equity

Largest gains	Exchange	Currency	Price	▲ %
VOLCAN CIA MIN-B	Peru	PEN	0.84	5.00
FALABELLA SA	Chile	CLP	3179.00	2.55
WALMART DE MEXIC	Mexico	MXN	64.28	2.47
ECOPETROL	Colombia	COP	2333.00	2.28
SMU SA	Chile	CLP	112.49	2.26

Per Turnover	Exchange	Amount (US\$)
CERVEZAS	Chile	56,207,020
GRUPO MEXICO-B	Mexico	43,494,900
WALMART DE MEXIC	Mexico	43,141,650
GRUPO F BANORT-O	Mexico	38,876,840
AMERICA MOVIL-L	Mexico	29,849,168

Largest losses	Exchange	Currency	Price	▼ %
GRUPO AEROPORTU	Mexico	MXN	129.88	-4.71
BOLSA MEXICANA	Mexico	MXN	40.98	-3.37
FERREYCORP SAA	Peru	PEN	2.2	-2.65
AERO DEL PACIF-B	Mexico	MXN	215.42	-2.41
INDUSTRIAS PENOL	Mexico	MXN	270.66	-2.34

Per Volume	Exchange	Volume
BANCO SANTANDER	Chile	292,336,207
ITAU CORP BANCA	Chile	288,378,689
ENEL CHILE SA	Chile	105,938,884
BANCO DE CHILE	Chile	95,786,178
ENEL AMERICAS SA	Chile	63,373,900

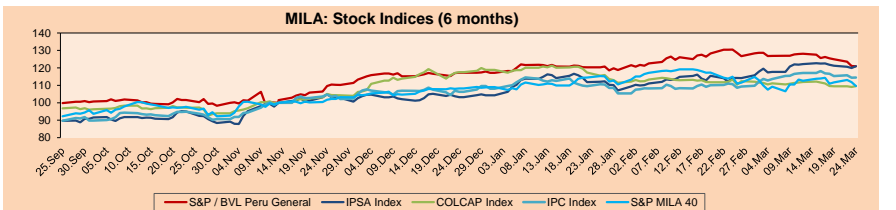
MILA

Peru: The General Index of the BVL ended today's session with a negative result of -0.94%. The index maintains an annual accumulated positive trend of + 3.33% in local currency, while the adjusted return in dollars amounts to + 2.18%. Then, the S&P / BVL Peru SEL varied by -0.59% while the S&P / BVL LIMA 25 by -0.40%. The PEN spot reached 5 / 3.6588. Headline: CADE Digital: Fuerza Popular and Perú Libre present their proposals in digital transformation

Chile: The IPSA index ended the day with a negative return of -0.93%. The sectors that benefited the least from the session were Information Technology (-3.11%) and Non-Basic Consumer Products (-0.33%). The worst performing stocks were Aguas Andinas SA (-6.56%) and CAP SA (-3.75%). Headline: The opposition reacted with annoyance to the announcements of the Government that do not consider the proposal of the sector

Colombia: The COLCAP index closed today with a negative return of -1.79%. The least benefited sectors in the session were Energy (-2.80%) and Public Services (-2.21%). The worst performing stocks were BanColombia (-2.62%) and Canacol Energy Ltd (-1.82%). Headline: More taxes on companies, the other axis of the new reform

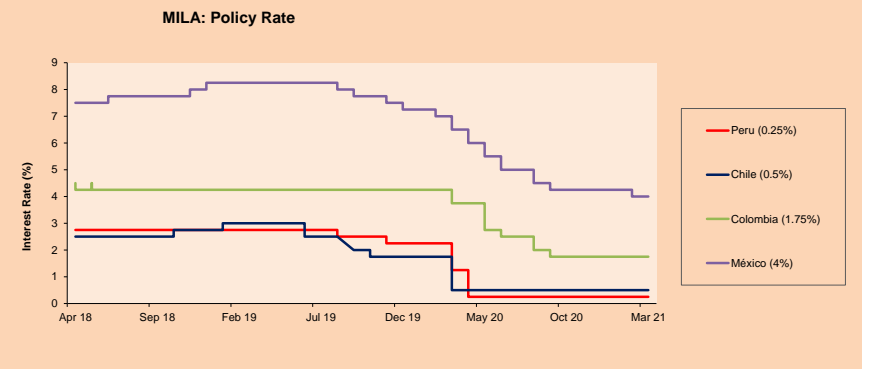
Mexico: The IPC index closed the day with a positive return of +0.17%. The sectors that benefited the most during the day were Public Services (+1.87%) and Health (+1.46%). The best performing stocks were Banco del Bajío SA (+2.93%) and Alfa SAB de CV (+1.92%). Headline: Mexico will leverage T-MEC for post-COVID economic takeoff: Hacienda



Base: 25/09/20=100

Source: Bloomberg

ETFs	Curr.	Close	1D	5D	30 D	YTD	Exchange
▼ iShares MSCI All Peru Caped Index Fund	USD	35.02	-0.48%	9.78%	-1.90%	0.98%	NYSE Arca
▼ iShares MSCI All Chile Caped Index Fund	USD	31.36	-0.85%	-5.83%	-9.86%	3.81%	Cboe BZX
▲ Global X MSCI Colombia	USD	9.94	-0.60%	3.01%	-2.31%	-12.50%	NYSE Arca
▲ iShares MSCI Mexico Capped	USD	46.64	1.37%	0.30%	3.03%	8.49%	NYSE Arca
▼ iShares MSCI Emerging Markets	USD	52.01	-0.13%	-3.92%	-2.69%	0.66%	NYSE Arca
▼ Vanguard FTSE Emerging Markets	USD	50.96	-0.12%	-3.90%	-1.75%	1.70%	NYSE Arca
▼ iShares Core MSCI Emergina Markets	USD	63.17	-0.03%	-3.78%	-2.20%	1.82%	NYSE Arca
▲ iShares JP Morgan Emerging Markets Bonds	USD	62.15	0.49%	-2.11%	-1.02%	1.75%	Cboe BZX
- Morgan Stanley Emerging Markets Domestic	USD	6.08	0.00%	-0.49%	1.00%	-3.34%	New York



Source: Bloomberg

Capital Market Laboratory Coordinator: Economist Bruno Bellido
Collaboration: María Camarena, Alonso García, Adrian Paredes and Jairo Valverde
email: pulsobursatil@ulima.edu.pe
facebook: www.facebook.com/pulsobursatil

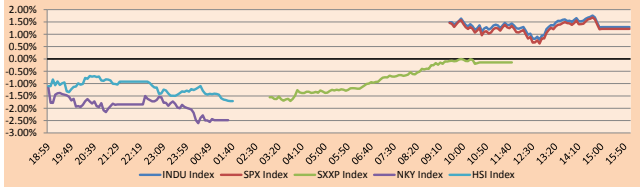
The content of this document is just for informational purposes. The information and opinions expressed should not be considered as recommendations for future decisions. Under any circumstances, the Capital Market Laboratory of University of Lima will be responsible for the use of the statements in this document.

WORLD

Main Indices	Close	1 D*	5 D*	1 M*	YTD*	Market Cap. (US\$ Mill.)
▲ Dow Jones (USA)	34,021.45	1.29%	-1.53%	1.02%	11.16%	9,925,402
▲ Standard & Poor's 500 (EEUU)	4,112.50	1.22%	-2.12%	-0.70%	9.49%	35,872,492
▲ NASDAQ Composite (USA)	13,124.99	0.72%	-3.73%	-6.22%	1.84%	21,664,221
▲ Stoxx EUROPE 600 (Europe)	437.32	-0.14%	-0.84%	0.17%	9.60%	9,956,337
▲ DAX (Germany)	15,199.68	0.33%	0.02%	-0.06%	10.79%	1,125,730
▲ FTSE 100 (United Kingdom)	6,963.33	-0.59%	-1.59%	0.34%	7.78%	1,434,839
▲ CAC 40 (France)	6,288.33	0.14%	-1.08%	1.28%	13.27%	1,709,211
▲ IBEX 35 (Spain)	8,966.20	-0.46%	-0.18%	4.40%	11.05%	498,188
▲ MSCI AC Asia Pacific Index	197.95	-1.83%	-4.13%	-4.45%	-0.99%	25,314,389
▲ HANG SENG (Hong Kong)	27,718.67	-1.81%	-3.21%	-4.09%	1.79%	4,239,941
▲ SHANGHAI SE Comp. (China)	3,429.54	-0.96%	-0.34%	0.38%	-1.26%	6,579,982
▲ NIKKEI 225 (Japan)	27,448.01	-2.49%	-6.42%	-7.34%	0.01%	3,774,348
▲ S&P / ASX 200 (Australia)	6,982.72	-0.88%	-1.12%	0.26%	6.90%	1,709,570
▲ KOSPI (South Korea)	3,122.11	0.17%	-0.22%	-1.15%	9.47%	1,860,177

*Legend: Variation 1D: 1 Day; 5D: 5 Days; 1M: 1 Month; YTD: Var. % 12/31/20 to date

Global Markets: Intraday Evolution (var %)

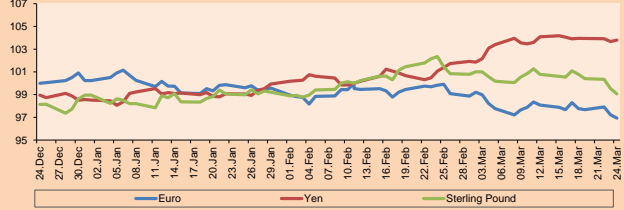


Source: Bloomberg

Currency	Price	1 D*	5 D*	1 M*	YTD*
▲ Euro	1.2081	0.07%	0.13%	1.11%	-1.11%
▲ Yen	109.4700	-0.18%	0.35%	0.38%	6.02%
▲ Sterling Pound	1.4052	-0.01%	1.17%	2.20%	2.79%
▲ Yuan	6.4520	-0.07%	-0.19%	-1.41%	-1.15%
▲ Hong Kong Dollar	7.7681	0.03%	0.00%	-0.07%	0.19%
▲ Brazilian Real	5.3098	0.08%	0.60%	-1.15%	2.14%
▲ Argentine Peso	94.0179	0.04%	0.24%	1.51%	11.73%

*Legend: Variation 1D: 1 Day; 5D: 5 Days; 1M: 1 Month; YTD: Var. % 12/31/20 to date

Foreign Exchange Indices (3 months)

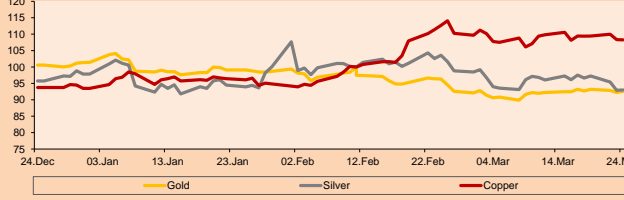


Base: 11/02/21=100
Source: Bloomberg

Commodities	Close	1 D*	5 D*	1 M*	YTD*
▲ Oro (US\$ Oz. T) (LME)	1,826.72	0.61%	0.63%	4.65%	-3.77%
▲ Plata (US\$ Oz. T) (LME)	27.09	0.26%	-0.80%	6.89%	2.62%
▲ Cobre (US\$ TM) (LME)	10,327.25	-1.02%	2.30%	16.02%	33.27%
▲ Zinc (US\$ TM) (LME)	2,904.25	-1.72%	-0.87%	5.13%	6.41%
▲ Petróleo WTI (US\$ Barril) (NYM)	63.82	-3.42%	-1.38%	5.94%	31.24%
▲ Estano (US\$ TM) (LME)	31,056.00	-3.15%	-8.19%	13.59%	51.16%
▲ Plomo (US\$ TM) (LME)	2,130.75	-1.59%	-3.30%	8.48%	7.85%
▲ Azúcar #11 (US\$ Libra) (NYB-ICE)	17.11	-4.09%	-2.51%	10.39%	20.58%
▲ Cacao (US\$ TM) (NYB-ICE)	2,502.00	-0.80%	3.69%	2.50%	-0.36%
▲ Café Arábica (US\$ TM) (NYB-ICE)	146.40	-0.07%	-5.12%	10.95%	11.04%

*Legend: Variación 1D: 1 Día; 5D: 5 Días; 1M: 1 Mes; YTD: Var. % 31/12/20 a la fecha

Principal Metals Index (3 months)



Base: 11/02/21=100
Source: Bloomberg

Equity

Germany (Stocks from DAX Index)					
Largest gains	Curr.	Price	▲%	Exchange	
MRK GY	EUR	138.25	1.84	Xetra	
FME GY	EUR	66.72	1.46	Xetra	
HEN3 GY	EUR	95.32	0.85	Xetra	
ALV GY	EUR	215.2	0.80	Xetra	

Europe (Stocks from STOXX EUROPE 600)					
Largest gains	Curr.	Price	▲%	Exchange	
HFG GY	EUR	65.98	4.10	Xetra	
ARGX BB	EUR	216.4	3.64	EN Brussels	
NEXI IM	EUR	15.665	3.33	Borsa Italiana	
GLPG NA	EUR	62.92	3.18	EN Amsterdam	

Largest losses					
Curr.	Price	▼%	Exchange		
ENR GY	EUR	24.26	-1.26	Xetra	
CON GY	EUR	112.04	-1.15	Xetra	
DAI GY	EUR	72.27	-0.95	Xetra	
ADS GY	EUR	284.85	-0.59	Xetra	

Global Overview:

United States:

The main US indexes ended today's session with positive returns, which had fallen sharply due to US inflation concerns. During the day, the S&P500 ended higher, driven by a recovery in all sectors except when the energy sector, which was weighed down by the fall in oil. This fell due to the resumption of the Colonial Pipeline, which eased the supply restriction. On the other hand, the industrial sector was the most representative in the rise of the indices today. Relative to stocks, Disney eased estimates of its earnings due to the reopening of its theme parks, which account for most of its revenue. On the other hand, Tesla shares continue to fall sharply, falling below its 200-day moving average. Finally, inflation concerns continue to affect the world market, casting doubt on the positivism of the economic recovery and the increase in vaccination, which leaves investors in a very alarming situation. To sum it up, DOW JONES + 1.29%, Nasdaq + 0.72% and S&P 500 + 1.22% ended the day higher.

Europe:

The main European market indexes ended the session mostly lower, dragged down by a sudden drop in commodity prices. Similarly, the rapid growth of US inflation is keeping risk sentiment in check. Meanwhile, in the European Union, carbon prices have doubled in the past six months, raising concerns that the rally is likely to have been driven by financial investors, according to Bloomberg. In economic data, UK house prices rose sharply in April on the back of a sudden increase in demand. As a result, the Stoxx 600 closed lower, dragged down by the energy -1.56% and materials -0.92% sectors. Meanwhile, in London, the FTSE 100 ended with losses: inflation expectations in the United Kingdom reached their highest levels since 2008. In individual stocks, luxury brand Burberry plunged -8.8% following the report announcing a 10% drop in annual sales. In addition, shares of Telefonica SA increased its net profit by €866 million; boosting the stock by 1.7% during today's session. Thus, FTSE 100 -0.59%; DAX +0.33%; STOXX 600 -0.14% closed the day mostly with losses.

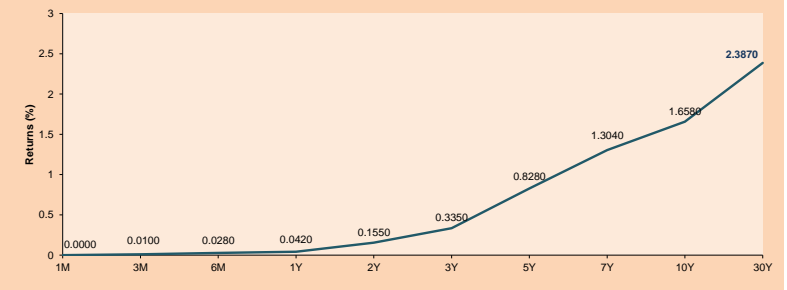
Asia:

Major index in Asian countries ended today's session with negative results, after tensions over inflationary risk impacted investors' decisions. In China and Hong Kong, stocks fell after bank lending data fell short of expectations, as well as ongoing disputes between China and the U.S. Chinese banks lent \$227.74 billion in April, well below March. This trend will continue as Beijing aims to stabilize the macro leverage ratio for annual targets, Haitong Securities said in a report. In Japan, the NIKKEI index fell to a four-month low as inflation fears hit the market. Big-value stocks such as SoftBank Group -7.77%, Terumo -4.44%, Tokyo Electron -4.69% and Sysmex -4.23%, posted losses. In Australia, mining stocks plunged nearly 2% as iron ore prices fell more than 7% after a five-session rally. In South Korea, stocks posted their third consecutive loss of the week on concerns about possible Fed tightening. Thus, S&P/ASX 200 -0.88%, Shanghai Composite -0.96%, Hang Seng -1.81%, NIKKEI -2.49%, KOSPI -1.25% closed with downbeat results.

ETFs

	Curr.	Close	1D	5D	30 D	YTD	Exchange
SPDR S&P 500 ETF TRUST	USD	410.28	1.20%	-2.10%	-0.62%	9.74%	NYSE Arca
ISHARES MSCI EMERGING MARKET	USD	52.01	-0.13%	-3.92%	-2.69%	0.66%	NYSE Arca
ISHARES IBOXX HIGH YLD CORP	USD	86.93	0.36%	-0.39%	-0.28%	-0.42%	NYSE Arca
FINANCIAL SELECT SECTOR SPDR	USD	37.29	1.61%	-0.77%	6.63%	26.49%	NYSE Arca
VANECK GOLD MINERS	USD	36.93	0.19%	0.46%	6.86%	2.53%	NYSE Arca
ISHARES RUSSELL 2000 ETF	USD	215.75	1.84%	-3.07%	-2.44%	10.04%	NYSE Arca
SPDR GOLD SHARES	USD	171.13	0.41%	0.63%	4.71%	-4.05%	NYSE Arca
ISHARES 20+ YEAR TREASURY BO	USD	135.81	0.15%	-2.94%	-1.93%	-13.90%	NASDAQ GM
INVESCO QQQ TRUST SERIES 1	USD	319.34	0.77%	-3.67%	-6.24%	1.78%	NASDAQ GM
ISHARES NASDAQ BIOTECHNOLOGY	USD	146.13	-0.16%	-1.53%	-2.06%	-3.54%	NASDAQ GM
ENERGY SELECT SECTOR SPDR	USD	51.88	-1.22%	-1.54%	8.40%	36.89%	NYSE Arca
PROSHARES ULTRA VIX FUTUR	USD	5.18	-14.52%	17.19%	10.45%	-51.36%	Close BZX
UNITED STATES OIL FUND LP	USD	43.81	-3.12%	-1.35%	5.82%	32.72%	NYSE Arca
ISHARES MSCI BRAZIL ETF	USD	36.98	0.76%	-0.08%	9.90%	-0.24%	NYSE Arca
SPDR S&P OIL & GAS EXP & PR	USD	81.59	-3.12%	-3.48%	6.24%	39.47%	NYSE Arca
UTILITIES SELECT SECTOR SPDR	USD	65.59	1.93%	-0.38%	-0.09%	4.61%	NYSE Arca
ISHARES US REAL ESTATE ETF	USD	96.26	1.22%	-1.00%	1.28%	12.39%	NYSE Arca
SPDR S&P BIOTECH ETF	USD	122.48	-1.32%	-2.55%	-4.99%	-13.00%	NYSE Arca
ISHARES IBOXX INVESTMENT GRA	USD	130.34	0.38%	-1.03%	-0.76%	-5.64%	NYSE Arca
ISHARES JP MORGAN USD EMERG	USD	110.65	0.52%	-0.41%	0.28%	-4.54%	NASDAQ GM
REAL ESTATE SELECT SECT SPDR	USD	41.56	1.27%	-0.72%	1.81%	13.68%	NYSE Arca
ISHARES CHINA LARGE-CAP ETF	USD	43.55	-1.43%	-5.18%	-6.22%	-6.20%	NYSE Arca
CONSUMER STAPLES SPDR	USD	70.60	1.41%	-0.06%	2.44%	4.67%	NYSE Arca
VANECK JR GOLD MINERS	USD	49.48	-1.18%	-1.84%	2.04%	-8.78%	NYSE Arca
SPDR BARRICK HIGH YIELD BND	USD	108.49	0.26%	-0.36%	-0.32%	-0.41%	NYSE Arca
VANGUARD REAL ESTATE ETF	USD	95.94	1.30%	-1.26%	1.25%	12.98%	NYSE Arca
GRAYSCALE BITCOIN TRUST BTC	USD	37.18	-11.41%	-17.75%	-32.31%	16.19%	OTC US

USA Treasury Bonds Yield Curve (%)



Source: Bloomberg

Capital Market Laboratory Coordinator: Economist Bruno Bellido
Collaboration: María Camarena, Alonso García, Adrian Paredes and Jairo Valverde
email: pulsohorsatil@ulima.edu.pe
facebook: www.facebook.com/pulsohorsatil.u

LIMA

Stocks

Ticker	Currency	Price	1D*	5D*	30D*	YTD*	Frequency	Volume (US\$)	Beta	Dividend Yield (%)	Price Earning	Market Cap. (M US\$)	Economic Sector*	Index Weight
▲ ALICORC1 PE**	S/.	7.52	0.24%	3.77%	-3.29%	-6.77%	100.00%	6,685,203	0.72	3.32	19.63	1,756.43	Industrial	3.53%
▲ ATACOCB1 PE**	S/.	0.14	7.69%	11.11%	-6.67%	1.45%	80.00%	31,559	1.16	0.00	-	36.15	Mining	1.02%
▲ BACKUS1 PE**	S/.	20.11	0.55%	1.31%	-12.37%	-0.20%	100.00%	25,206	0.69	1.75	9.64	7,606.34	Industrial	0.82%
▲ BAP PE**	US\$	142.00	1.54%	22.15%	-2.01%	-11.58%	100.00%	2,417,597	1.25	6.20	-	13,402.29	Diverse	5.82%
▼ BVN PE**	US\$	11.02	-2.99%	11.54%	2.51%	-8.17%	100.00%	92,417	1.13	0.00	-	3,032.28	Mining	5.88%
- CASAGRC1 PE**	S/.	6.10	0.00%	10.91%	-0.81%	28.42%	75.00%	109,445	0.83	3.70	5.78	140.44	Agricultural	1.31%
- BBVAC1 PE**	S/.	2.23	0.00%	8.25%	-8.23%	2.76%	100.00%	293,157	0.86	0.00	23.34	3,979.46	Finance	2.85%
▲ CORAREH1 PE**	S/.	1.24	0.81%	15.89%	4.20%	39.33%	100.00%	179,845	1.07	7.79	3.97	383.60	Industrial	1.72%
▲ CPACASC1 PE**	S/.	5.81	1.22%	6.61%	2.11%	9.62%	100.00%	1,198,792	0.64	3.96	41.50	725.93	Industrial	2.38%
▲ CVERDEC1 PE**	US\$	24.90	1.63%	10.67%	6.41%	19.02%	100.00%	621,980	1.30	2.29	31.75	8,716.39	Mining	5.25%
▲ ENGEPEC1 PE**	S/.	2.38	3.03%	13.33%	-5.56%	19.00%	90.00%	702,998	0.68	11.98	14.55	1,846.57	Public Services	1.44%
▲ ENDISPC1**	S/.	5.20	1.96%	5.05%	-13.33%	-3.70%	60.00%	2,028	0.77	3.28	11.70	907.55	Public Services	0.98%
▲ FERREYV1 PE**	S/.	1.98	2.59%	8.20%	-7.04%	13.79%	100.00%	1,438,199	0.84	9.20	13.17	528.00	Diverse	4.90%
▲ AENZAC1 PE**	S/.	1.29	0.78%	9.32%	-26.29%	-25.86%	95.00%	168,866	0.68	0.00	-	307.42	Diverse	4.05%
▲ IFS PE**	US\$	29.68	1.30%	18.77%	-6.37%	-4.07%	100.00%	49,852	1.25	2.59	16.36	3,426.49	Diverse	7.22%
▲ INRETC1 PE**	US\$	40.51	1.28%	15.09%	-0.10%	3.34%	100.00%	106,560	0.79	1.68	50.36	4,164.72	Diverse	5.28%
- LUSURC1 PE**	S/.	13.00	0.00%	13.04%	-8.77%	-49.02%	85.00%	646	0.99	0.00	13.09	1,730.18	Public Services	1.81%
▼ MINSUR1 PE**	S/.	3.24	-0.31%	12.50%	15.71%	75.14%	95.00%	68,935	0.97	0.00	87.43	2,553.00	Mining	3.09%
- PML PE**	US\$	0.14	0.00%	8.00%	-12.34%	27.36%	65.00%	78	1.51	0.00	-	35.67	Mining	2.12%
▲ RELAPAC1 PE**	S/.	0.12	2.56%	4.35%	-6.25%	73.91%	95.00%	13,246	0.96	0.00	3.33	272.85	Industrial	2.12%
▼ SCCO PE**	US\$	77.20	-4.71%	6.16%	8.67%	17.15%	90.00%	105,295	1.10	2.85	26.82	59,681.25	Mining	2.14%
▲ SIDERC1 PE**	S/.	1.13	3.67%	13.00%	-1.74%	32.94%	85.00%	92,169	0.97	19.87	9.05	274.23	Industrial	1.43%
▼ TV PE**	US\$	0.20	-1.94%	8.60%	27.85%	37.41%	95.00%	59,783	1.47	0.00	-	199.80	Mining	2.93%
▲ UNACEMC1 PE**	S/.	1.60	3.23%	10.34%	-4.19%	3.23%	95.00%	370,207	0.99	1.63	35.05	795.07	Industrial	3.00%
▼ VOLGABC1 PE**	S/.	0.77	-1.28%	13.24%	-7.23%	48.08%	100.00%	119,983	1.40	0.00	-	857.92	Mining	5.90%
▲ NEXAPEC1 PE**	S/.	3.65	1.39%	14.06%	6.41%	28.98%	90.00%	99,909	1.21	0.00	-	1,317.43	Mining	1.56%

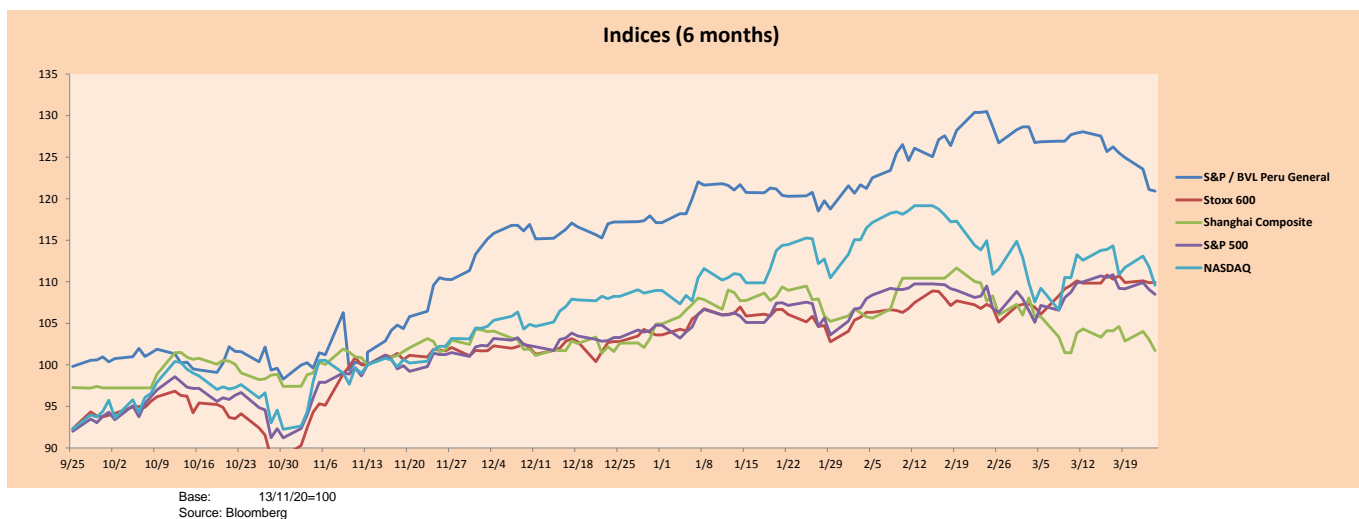
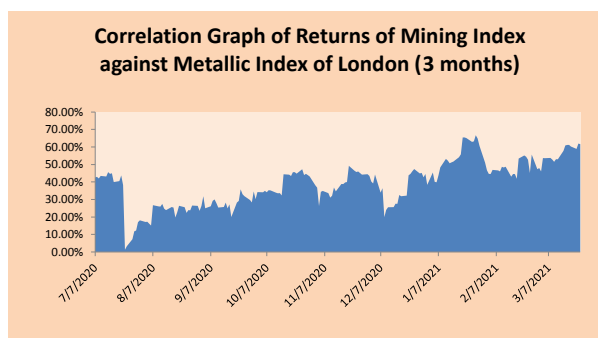
Quantity of shares: 26
 Source: Bloomberg, Económica
 * Bloomberg Industry Classification System
 ** PER is used in the stock market and original currency of the instrument
 *Legend: Variation 1D: 1 Day; 5D: 5 Days, 1M: 1 Month; YTD: Var.% 12/31/20 to date

Sectorial Indices

	Close	1D*	5D*	30D*	YTD*	Beta
▼ S&P/BVLMining	452.13	-4.89%	4.84%	7.90%	15.95%	0.92
▲ S&P/BVLConsumer	1,163.94	2.07%	10.55%	-0.26%	6.92%	0.41
▲ S&P/BVLIndustrials	202.10	1.98%	8.26%	-5.70%	6.06%	0.49
▼ S&P/BVLFinancials	940.12	-0.10%	16.17%	-1.74%	-9.07%	1.79
▲ S&P/BVLConstruction	209.31	1.70%	8.37%	-7.15%	0.09%	0.54
▲ S&P/BVLPublicSvcs	602.04	1.36%	8.38%	-7.00%	-1.96%	0.15
▲ S&P/BVLElectricUtil	587.74	1.36%	8.38%	-7.00%	-1.96%	0.15

S&P/BVLConstructionTRPEN

*Legend: Variation 1D: 1 Day; 5D: 5 Days, 1M: 1 Month; YTD: Var.% 12/31/20 to date



Capital Market Laboratory Coordinator: Economist Bruno Bellido
 Collaboration: María Camarena, Alonso García, Adrían Paredes and Jairo Valverde
 email: pulsobursatil@ulima.edu.pe
 facebook: www.facebook.com/pulsobursatil

The content of this document is just for informational purposes. The information and opinions expressed should not be considered as recommendations for future decisions. Under any circumstances, the Capital Market Laboratory of University of Lima will be responsible for the use of the statements in this document.

SOVEREIGN RATING

RISK RATINGS

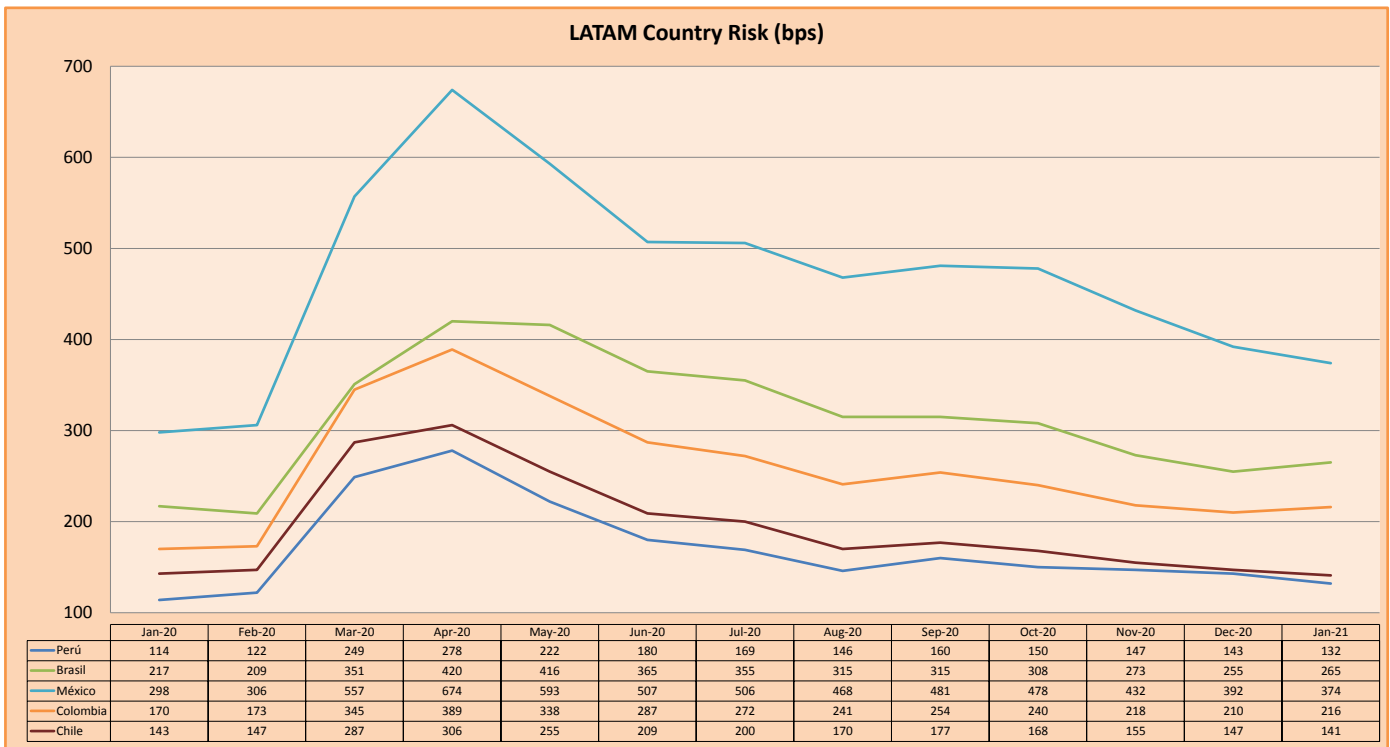
Moody's	S&P	Fitch		
Aaa	AAA	AAA	Prime	
Aa1	AA+	AA+	High credit quality	
Aa2	AA	AA		
Aa3	AA-	AA-		
A1	A+	A+	Medium-high grade, with low credit risk	
A2	A	A		
A3	A-	A-		
Baa1	BBB+	BBB+	Moderate Credit Risk	
Baa2	BBB	BBB		
Baa3	BBB-	BBB-		
Ba1	BB+	BB+	It has speculative elements and it is subject to substantial credit risk	
Ba2	BB	BB		
Ba3	BB-	BB-		
B1	B+	B+	It is considered speculative and it has high credit risk	
B2	B	B		
B3	B-	B-		
Caa1	CCC+	CCC	Bad credit conditions and it is subject to high credit risk	
Caa2	CCC			
Caa3	CCC-			
Ca	C	DDD	Very close to default or in default	
C	D			DD
				D

Source: Bloomberg

Latin America Credit Rating			
Clasificadora de riesgo			
Country	Moody's	Fitch	S&P
Peru	A3	BBB+	BBB+
México	Ba2	BB-	BB-
Venezuela	C	WD	SD
Brazil	Ba2	BB-	BB-
Colombia	Baa2	BBB-	BBB-
Chile	A1	A-	A
Argentina	Ca	WD	CCC+
Panama	Baa2	BBB-	BBB

Source: Bloomberg

LATAM Country Risk (bps)



Source: BCRP

Capital Market Laboratory Coordinator: Economist Bruno Bellido

Collaboration: Maria Camarena, Alonso Garcia, Adrian Paredes and Jairo Valverde

email: pulsobursatil@ulima.edu.pe

facebook: www.facebook.com/pulsobursatil.ul