

# PULSO BURSÁTIL

FACULTAD DE CIENCIAS EMPRESARIALES Y ECONÓMICAS  
CARRERA DE ECONOMÍA  
LABORATORIO DE MERCADO DE CAPITALES

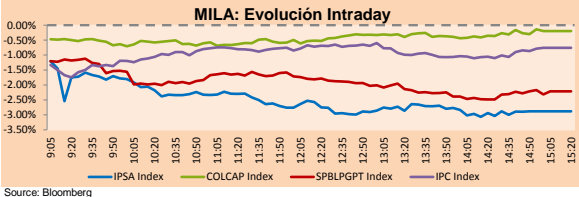


## MILA

Lima, May 19, 2021

Main Indexes	Close	1 D	5 D	1 M	YTD	Cap. Burs. (US\$ bill)
▼ IPSA (Chile)	4,030.39	-2.74%	-10.15%	-19.00%	-3.52%	116.90
▼ IGPA (Chile)	20,403.94	-2.68%	-9.85%	-18.73%	-2.87%	140.76
▼ COLSC (Colombia)	983.26	-0.54%	0.77%	-4.02%	-7.15%	4.56
▼ COLCAP (Colombia)	1,265.64	-0.20%	-2.05%	-3.49%	-11.98%	75.89
▼ S&P/BVL (Perú)*	21,204.73	-2.21%	-2.37%	8.55%	1.84%	104.34
▼ S&P/BVL SEL (Perú)	561.41	-2.14%	-2.57%	8.04%	1.81%	93.66
▼ S&P/BVL LIMA 25	27,659.15	-1.87%	-2.30%	9.20%	9.76%	103.45
▼ IPC (México)	49,382.25	-0.82%	1.30%	1.76%	12.06%	308.33
▼ S&P MILA 40	492.19	-2.65%	-6.62%	-12.35%	-7.94%	6,144.63

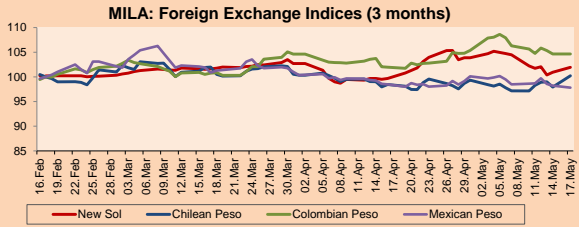
\*Legend: Variation 1D: 1 day; 5D: 5 days; 1M: 1 Month; YTD: Var% 12/31/20 to date



Source: Bloomberg

Currency	Price	1D*	5D*	30 D*	YTD*
▲ New Sol (PEN)	3,7433	0.11%	0.67%	1.90%	3.46%
▲ Chilean Peso (CLP)	712.11	-0.06%	0.68%	1.49%	0.05%
▲ Colombian Peso (COP)	3,672.45	0.16%	-1.99%	1.96%	7.08%
▲ Mexican Peso (MXN)	19.93	0.42%	-1.18%	0.56%	0.07%

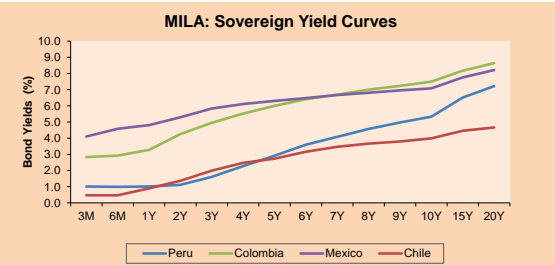
\*Legend: Variation 1D: 1 day; 5D: 5 days; 1M: 1 Month; YTD: Var% 12/31/20 to date



Base: 17/02/21=100

Source: Bloomberg

Fixed Income	Currency	Price	Bid Yield (%)	Ask Yield (%)	Duration
PERU 7.35 07/21/25	USD	123.051	1.67	1.54	3.64
PERU 4.125 08/25/27	USD	111.106	2.26	2.17	5.59
PERU 8.75 11/21/33	USD	155.694	3.32	3.24	8.59
PERU 6.55 03/14/37	USD	135.654	3.61	3.54	10.44
PERU 5.625 11/18/2050	USD	133.298	3.77	3.73	16.68
CHILE 2.25 10/30/22	USD	102.541	0.81	0.35	1.43
CHILE 3.125 01/21/26	USD	107.759	1.46	1.35	4.36
CHILE 3.625 10/30/42	USD	102.912	3.45	3.41	15.42
COLOM 11.85 03/09/28	USD	159.635	2.47	2.17	5.21
COLOM 10.375 01/28/33	USD	149.581	4.89	4.68	7.68
COLOM 7.375 09/18/37	USD	131.17	4.67	4.59	10.48
COLOM 6.125 01/18/41	USD	118.039	4.74	4.68	12.15
MEX 4 10/02/23	USD	118.039	4.736	4.679	12.15
MEX5.55 01/45	USD	117.308	4.40	4.34	14.05



Source: Bloomberg

## Equity

Largest gains	Exchange	Currency	Price	▲ %
CNEC	Colombia	COP	9940.00	2.21
INTERCORP	Peru	PEN	27.45	2.19
CELSIA	Colombia	COP	4370.00	1.83
RELAPA	Peru	PEN	0.118	1.70
PFCEMARGOS	Colombia	COP	3922.00	1.58

Per Turnover	Exchange	Amount (US\$)
AMXL MF	Mexico	25,042,950
WALMEX* MF	Mexico	28,744,471
GFNORTECO MF	Mexico	29,448,419
FALAB CC	Chile	30,671,824
SQM/B CC	Chile	36,940,858

Largest losses	Exchange	Currency	Price	▼ %
IAM SA	Chile	CLP	416.24	-10.11
SOQUIMICH	Chile	CLP	30380	-7.94
CENCOSUD	Chile	CLP	1179.00	-7.93
SCCO PE	Peru	PEN	70.75	-7.71
AGUASA.SN	Chile	CLP	151.00	-6.50

Per Volume	Exchange	Volume
SCCO PE	Peru	112,672
ALICORC1 PE	Peru	125,024
VOLCABC1 PE	Peru	226,735
FERREYC1 PE	Peru	344,152
GCARSOA1 MF	Mexico	440,955

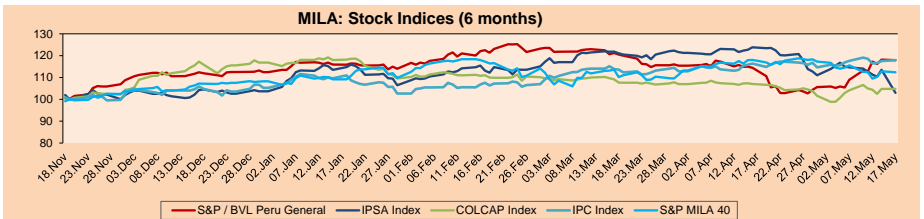
## MILA

Peru: The General Index of the BVL ended today's session with a negative result of -2.21%. The index maintains an annual accumulated positive trend of + 1.845% in local currency, while the adjusted return in dollars varied to -1.57%. Then, the S&P / BVL Peru SEL varied by -2.14% while the S&P / BVL LIMA 25 by -1.87%. The PEN spot reached S / 3.7433. Headline: Lima Stock Exchange closes in red due to a sharp fall in shares in the mining sector.

Chile: The IPSA index ended the day with a negative return of -2.74%. The sectors that benefited the least from the session were Materials (-5.40%) and Non-cyclical Consumer Products (-4.08%). The worst performing stocks were Inversion Aguas Metropolitan (-10.49%) and Sociedad Química y Minera de C (-7.94%). Headline: Chilean stock market makes its third day in a row down amid a day of turmoil for global markets.

Colombia: The COLCAP index closed today with a negative return of -0.20%. The most affected sectors of the day were Public Services (-1.50%) and Energy (-1.23%). The worst performing stocks were Almacenes Éxito SA (-3.58%) and Inversiones Argos SA (-2.73%). Headline: Standard and Poor's downgrades Colombia's investment grade

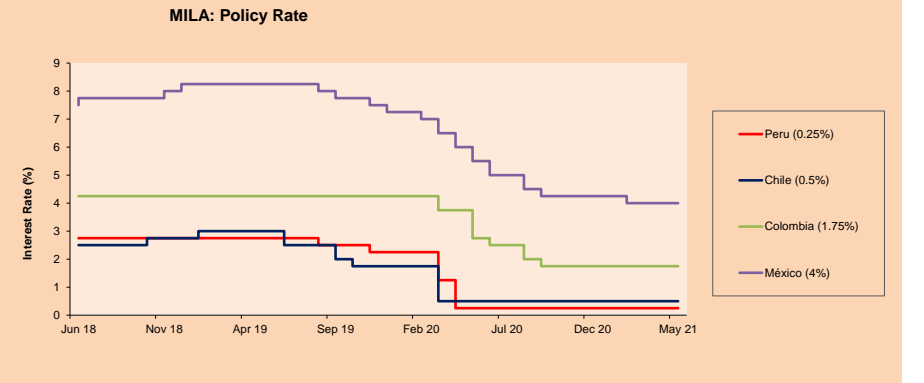
Mexico: The IPC index closed the day with a negative return of -0.82%. The sectors most affected in the day were Public Services (-4.47%) and Materials (-2.48%). The worst performing stocks were Infraestructura Energética Nov (-4.47%) and Grupo México SAB de CV (-3.54%). Headline: Biden's government 'sticks its leg' and calls for Mexico's energy policy



Base: 18/11/20=100

Source: Bloomberg

ETFs	Curr.	Close	1D	5D	30 D	YTD	Exchange
▼ iShares MSCI All Peru Caped Index Fund	USD	33.51	-3.04%	-4.77%	-2.59%	-3.37%	NYSE Arca
▼ iShares MSCI All Chile Caped Index Fund	USD	28.36	-2.24%	-10.34%	-20.78%	-6.12%	Cboe BZX
▼ Global X MSCI Colombia	USD	9.9877	-1.15%	-0.12%	-3.31%	-12.08%	NYSE Arca
▼ iShares MSCI Mexico Capped	USD	47.35	-1.11%	2.91%	2.31%	10.14%	NYSE Arca
▼ iShares MSCI Emerging Markets	USD	53.45	-0.30%	2.63%	-1.29%	3.44%	NYSE Arca
▼ Vanuand FTSE Emerging Markets	USD	52.44	-0.27%	2.78%	-0.44%	4.65%	NYSE Arca
▼ iShares Core MSCI Emerging Markets	USD	64.8	-0.29%	2.53%	-1.08%	4.45%	NYSE Arca
▼ iShares JP Morgan Emerging Markets Bonds	USD	63.29	-0.41%	2.33%	-0.75%	3.62%	Cboe BZX
▼ Morgan Stanley Emerging Markets Domestic	USD	6.12	-0.49%	0.66%	0.16%	-2.70%	New York



Source: Bloomberg

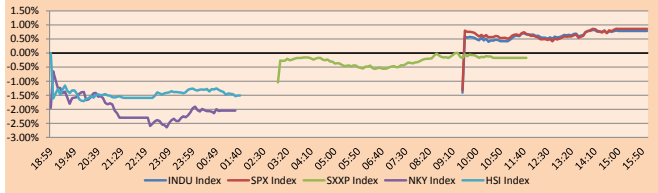
Capital Market Laboratory Coordinator: Economist Bruno Bellido  
Collaboration: Maria Camarena, Alonso Garcia, Adrian Paredes and Jairo Valverde  
email: pulsobursatil@ulima.edu.pe  
facebook: www.facebook.com/pulsobursatil.ul

## WORLD

Main Indices	Close	1 D*	5 D*	1 M*	YTD*	Market Cap. (US\$ Mill.)
▼ Dow Jones (USA)	33,896.04	-0.48%	0.92%	0.22%	10.75%	10,040,243
▼ Standard & Poor's 500 (EEUU)	4,115.68	-0.29%	1.30%	-0.47%	9.57%	36,331,472
▼ NASDAQ Composite (USA)	13,299.74	-0.03%	2.06%	-3.53%	3.19%	22,132,584
▼ Stoxx EUROPE 600 (Europe)	436.34	-1.51%	-0.36%	0.59%	9.35%	9,865,072
▼ DAX (Germany)	15,113.56	-1.77%	-0.24%	-0.11%	10.17%	1,112,251
▼ FTSE 100 (United Kingdom)	6,950.20	-1.19%	-0.78%	1.32%	7.58%	1,422,472
▼ CAC 40 (France)	6,262.55	-1.43%	-0.27%	1.58%	12.81%	1,689,372
▼ IBEX 35 (Spain)	9,070.70	-1.23%	0.70%	7.23%	12.35%	500,154
▼ MSCI AC Asia Pacific Index	203.61	-0.51%	0.98%	-2.07%	1.84%	26,086,365
▲ HANG SENG (Hong Kong)	28,593.81	1.42%	2.07%	-1.76%	-0.34%	4,353,195
▲ SHANGHAI SE Comp. (China)	3,510.97	-0.51%	1.39%	1.09%	1.09%	6,773,404
▼ NIKKEI 225 (Japan)	28,044.45	-1.28%	-0.37%	-3.76%	2.05%	3,877,393
▼ S&P / ASX 200 (Australia)	6,931.66	-1.90%	-1.61%	-1.01%	5.47%	1,700,268
▼ KOSPI (South Korea)	3,173.05	-0.82%	1.30%	-1.02%	10.19%	1,885,100

\*Legend: Variation 1D: 1 Day; 5D: 5 Days; 1M: 1 Month; YTD: Var.% 12/31/20 to date

Global Markets: Intraday Evolution (var %)

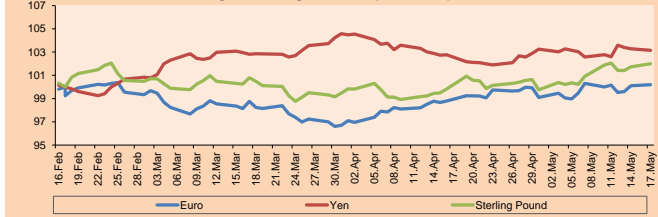


Source: Bloomberg

Currency	Price	1 D*	5 D*	1 M*	YTD*
▼ Euro	1.2175	-0.38%	0.85%	1.15%	-0.34%
▲ Yen	109.2200	0.29%	-0.41%	0.97%	5.78%
▲ Sterling Pound	1.4115	-0.52%	0.43%	0.92%	3.26%
▲ Yuan	6.4349	0.14%	-0.33%	-1.16%	-1.41%
▲ Hong Kong Dollar	7.7648	-0.01%	-0.01%	-0.01%	0.15%
▲ Brazilian Real	5.3106	0.94%	0.08%	-4.29%	2.16%
▲ Argentine Peso	94.2049	0.04%	0.23%	1.38%	11.95%

\*Legend: Variation 1D: 1 Day; 5D: 5 Days; 1M: 1 Month; YTD: Var.% 12/31/20 to date

Foreign Exchange Indices (3 months)

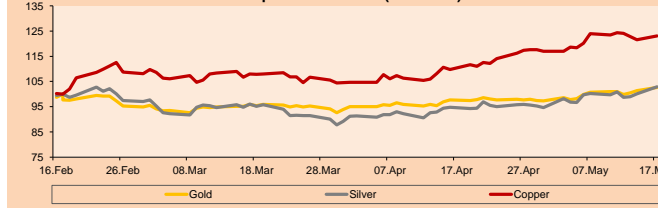


Base: 17/02/21=100  
Source: Bloomberg

Commodities	Close	1 D*	5 D*	1 M*	YTD*
▲ Oro (US\$ Oz. T) (LME)	1,869.62	0.01%	2.97%	5.54%	-1.51%
▼ Plata (US\$ Oz. T) (LME)	27.74	-1.59%	2.64%	7.41%	5.05%
▼ Cobre (US\$ TM) (LME)	9,980.00	-3.82%	-4.34%	6.35%	28.79%
▼ Zinc (US\$ TM) (LME)	2,920.75	-3.83%	-1.16%	3.32%	7.01%
▼ Petróleo WTI (US\$ Barril) (NYM)	63.36	-3.25%	-4.12%	-0.11%	30.29%
▼ Estanto (US\$ TM) (LME)	32,205.00	-2.20%	0.44%	14.80%	56.76%
▼ Plomo (US\$ TM) (LME)	2,173.50	-2.12%	0.38%	6.82%	10.01%
▼ Azúcar #11 (US\$ Libra) (NYB-ICE)	16.95	-1.51%	-4.99%	4.57%	19.45%
▼ Cacao (US\$ TM) (NYB-ICE)	2,469.00	-1.40%	-1.91%	-0.92%	-1.67%
▼ Café Arábica (US\$ TM) (NYB-ICE)	150.95	-1.21%	3.04%	14.44%	14.49%

\*Leyenda: Variación 1D: 1 Día; 5D: 5 Días; 1M: 1 Mes; YTD: Var.% 31/12/20 a la fecha

Principal Metals Index (3 months)



Base: 17/02/21=100  
Source: Bloomberg

## Equity

Germany (Stocks from DAX Index)

Largest gains	Curr.	Price	▲ %	Exchange	Largest losses	Curr.	Price	▼ %	Exchange
ADS GY	EUR	294.55	0.26	Xetra	DBER GY	EUR	102.15	-3.54	Xetra
VNA GY	EUR	51.12	-0.43	Xetra	HEI GY	EUR	73.28	-3.27	Xetra
FME GY	EUR	66.46	-0.72	Xetra	DAI GY	EUR	72.46	-3.12	Xetra
EDAN GY	EUR	10.484	-0.72	Xetra	DTE GY	EUR	16.592	-2.79	Xetra

Europe (Stocks from STOXX EUROPE 600)

Largest gains	Curr.	Price	▲ %	Exchange	Largest losses	Curr.	Price	▼ %	Exchange
FERG LN	Gbp	9472	2.18	Londres	KGH PW	PLN	202	-5.61	Warsaw
BAKKA NO	NOK	709.4	1.84	Oslo	NHY NO	NOK	50.9	-5.53	Oslo
SOON SE	CHF	296	1.79	SIX Swiss Ex	CNHI IM	EUR	13.435	-5.35	Borsa Italiana
FDU FP	EUR	45	1.76	EN Paris	SECUB SS	SEK	136.2	-5.35	Stockholm

## Global Overview:

### United States:

Major U.S. indices ended today's session lower after the U.S. Federal Reserve signaled the need to adjust the benchmark rate. The April minutes revealed that, if the accelerating pace of inflation continues, the next meetings will most likely discuss reducing monthly government bond purchases and raising interest rates. On the other hand, oil prices closed with losses due to the possibility that an agreement between the United States and Iran will increase the supply of crude oil. Thus, the S&P 500 closed lower dragged down by the Energy -2.52% and Materials -1.54% sectors. Similarly, Bitcoin and Ether plunged after China banned financial institutions from providing services with cryptocurrencies. In individual stocks, Target rose 6.1% following its earnings report which showed a solid quarterly sales figure. Similarly, SO DOW JONES -0.48%; S&P 500 -0.29% and NASDAQ -0.03% ended the day with negative returns.

### Europe:

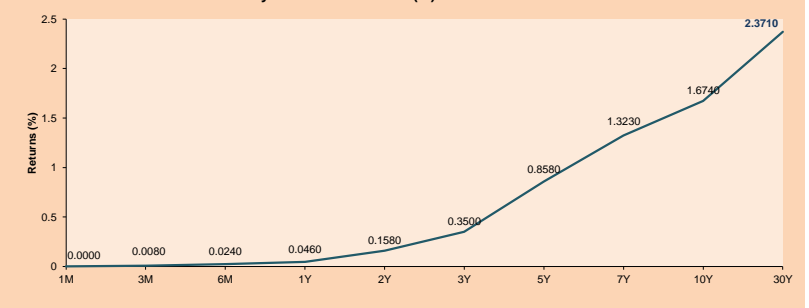
European markets ended with negative results, marking the worst day of the week. Major European indexes replicated the performance of markets globally, with investors on Wall Street remaining cautious on rising inflationary pressures. Additionally, falling cryptocurrencies and rising UK inflation added to close the day in the red. The pan-European STOXX 600 index ended lower, accompanying the dismal performance of the mining, travel and technology sectors. In the UK, the FTSE 100 index ended negative as inflation doubled in April, according to the Office for National Statistics. Consumer prices rose by 1.5% after a 0.7% rise in March. In Germany, the Frankfurt index closed lower after the German Economic Institute's report showed that raw material shortages could cost the country a quick recovery from the economic impact of the pandemic. In stock market shares, Reuters highlights ASML International -1.52%, ASML -2.66% and Infineon Technologies -1.74%, falling on concerns about a global chip shortage. Thus, the STOXX 600 -1.51%, CAC 40 -1.43%, FTSE 100 -1.19%, DAX -1.77% closed with downward.

### Asia:

The major Asian indices closed trading in negative territory due to growing concerns about the Fed's pronouncement today. The Chinese market closed lower due to the imposition of a new regulation on financial institutions against the use of cryptocurrencies which manifested itself in bitcoin falling again to a low of \$37,140.90. In turn, in Taiwan, infections by Covid19 continue to increase, although the government is accelerating its vaccination campaigns and the acquisition of AstraZeneca vaccines is being evaluated. The Japanese market closed down as a result of the slow vaccination campaign which would be putting into question the safety of the Olympics to be held in the country, in turn investors are waiting for the publication of the data economic at the regional level. Finally, the Australian market closed lower due to a drop in crude oil prices. Thus, NIKKEI -1.28%; CSI 300 -0.30%; S & P / ASX -1.90%; NIFTY 50 -0.52% and SHANGHAI COMPOSITE -0.51% closed lower.

ETFs	Curr.	Close	1D	5D	30 D	YTD	Exchange
SPDR S&P 500 ETF TRUST	USD	410.86	-0.26%	1.34%	-1.05%	9.89%	NYSE Arca
ISHARES MSCI EMERGING MARKET	USD	53.45	-0.30%	2.63%	-1.29%	3.44%	NYSE Arca
ISHARES IBXX HIGH YLD CORP	USD	86.61	-0.26%	-0.01%	-0.63%	-0.79%	NYSE Arca
FINANCIAL SELECT SECTOR SPDR	USD	37.19	-0.61%	1.34%	5.35%	26.15%	NYSE Arca
VANECK GOLD MINERS	USD	39.04	-1.49%	5.91%	9.08%	8.38%	NYSE Arca
ISHARES RUSSELL 2000 ETF	USD	217.95	-0.77%	2.88%	-1.70%	11.16%	NYSE Arca
SPDR GOLD SHARES	USD	175.16	0.07%	2.78%	5.59%	-1.79%	NYSE Arca
ISHARES 20+ YEAR TREASURY BO	USD	136.11	-0.24%	0.38%	-1.98%	-13.71%	NASDAQ GM
INVESTCO QQQ TRUST SERIES 1	USD	322.59	0.11%	1.80%	-4.81%	2.82%	NASDAQ GM
ISHARES NASDAQ BIOTECHNOLOGY	USD	149.15	-0.92%	1.91%	-1.60%	-1.54%	NASDAQ GM
ENERGY SELECT SECTOR SPDR	USD	52.13	-2.49%	-0.74%	7.82%	37.55%	NYSE Arca
PROSHARES ULTRA VIX ST FUTUR	USD	4.89	7.47%	-19.31%	3.16%	-54.08%	Cboe BZX
UNITED STATES OIL FUND LP	USD	43.43	-3.14%	-3.96%	0.25%	31.57%	NYSE Arca
ISHARES MSCI BRAZIL ETF	USD	37.50	-1.32%	2.18%	6.32%	1.16%	NYSE Arca
SPDR S&P OIL & GAS EXP & PR	USD	86.46	-2.09%	2.66%	11.58%	47.79%	NYSE Arca
UTILITIES SELECT SECTOR SPDR	USD	65.25	-0.17%	1.40%	-2.42%	4.07%	NYSE Arca
ISHARES US REAL ESTATE ETF	USD	97.28	-0.28%	2.29%	0.76%	13.58%	NYSE Arca
SPDR S&P BIOTECH ETF	USD	124.95	-1.75%	0.67%	-2.93%	-11.24%	NYSE Arca
ISHARES IBXX INVESTMENT GRA	USD	130.24	-0.18%	0.30%	-0.37%	-5.71%	NYSE Arca
ISHARES JP MORGAN US EMERGI	USD	110.64	-0.47%	0.51%	-0.45%	-4.55%	NASDAQ GM
REAL ESTATE SELECT SECT SPDR	USD	41.89	-0.38%	2.07%	0.87%	14.58%	NYSE Arca
ISHARES CHINA LARGE-CAP ETF	USD	45.13	0.29%	2.15%	-3.77%	-2.80%	NYSE Arca
CONSUMER STAPLES SPDR	USD	70.36	-0.33%	1.16%	1.18%	4.31%	NYSE Arca
VANECK JR GOLD MINERS	USD	53.10	-1.45%	6.05%	7.58%	-2.10%	NYSE Arca
SPDR BBG BARC HIGH YIELD BND	USD	108.15	-0.29%	-0.06%	-0.69%	-0.73%	NYSE Arca
VANGUARD REAL ESTATE ETF	USD	96.89	-0.32%	2.30%	0.60%	14.08%	NYSE Arca
GRAYSCALE BITCOIN TRUST BTC	USD	32.60	-5.18%	-22.33%	-32.01%	1.88%	OTC US

USA Treasury Bonds Yield Curve (%)



Source: Bloomberg

# LIMA

## Stocks

Ticker	Currency	Price	1D*	5D*	30D*	YTD*	Frequency	Volume (US\$)	Beta	Dividend Yield (%)	Price Earning	Market Cap. (M US\$)	Economic Sector*	Index Weight
▼ ALICORC1 PE**	S/.	6.90	-0.54%	0.77%	-4.02%	-7.15%	100.00%	938,380	0.72	3.62	18.02	1,572.48	Industrial	3.53%
▼ ATACOCB1 PE**	S/.	0.14	0.00%	6.15%	-8.00%	0.00%	80.00%	10,376	1.15	0.00	-	34.83	Mining	1.02%
▼ BACKUS11 PE**	S/.	19.50	-2.50%	-2.50%	-14.10%	-3.23%	100.00%	18,695	0.68	1.80	9.35	7,279.87	Industrial	0.82%
▼ BAP PE**	US\$	139.34	-1.00%	-0.36%	3.79%	-13.24%	100.00%	6,934,117	1.23	6.32	-	13,151.23	Diverse	5.82%
▼ BVN PE**	US\$	11.36	-3.32%	0.00%	8.60%	-5.33%	100.00%	548,219	1.16	0.00	-	3,125.84	Mining	5.88%
- CASAGRC1 PE**	S/.	5.90	0.00%	-3.28%	0.00%	24.21%	95.00%	11,239	0.83	0.00	5.59	132.77	Agricultural	1.31%
- BBVAC1 PE**	S/.	2.17	0.00%	-2.69%	-2.69%	0.00%	90.00%	39	0.88	0.00	22.71	3,784.98	Finance	2.85%
▼ CORARE11 PE**	S/.	1.14	-1.72%	-7.32%	16.33%	28.09%	100.00%	226,684	1.05	8.47	3.65	397.75	Industrial	1.72%
▼ CPACASC1 PE**	S/.	5.61	-1.58%	-2.26%	3.89%	5.85%	100.00%	417,368	0.63	4.10	40.07	686.89	Industrial	2.38%
▼ CVERDEC1 PE**	US\$	21.50	-3.46%	-12.24%	2.38%	2.77%	100.00%	328,021	1.28	2.66	27.42	7,526.20	Mining	5.25%
▼ ENGEPEC1 PE**	S/.	2.26	-0.88%	-2.16%	-3.42%	13.00%	95.00%	37,691	0.70	8.74	13.81	1,713.88	Public Services	1.44%
▼ ENDISPC1**	S/.	4.95	-2.94%	-2.94%	-10.00%	-8.33%	80.00%	5,585	0.76	3.45	11.14	844.41	Public Services	0.98%
- FERREY1 PE**	S/.	1.90	0.00%	-1.55%	-4.52%	9.20%	100.00%	293,307	0.82	9.58	12.64	495.23	Diverse	4.90%
▼ AENZAC1 PE**	S/.	1.20	-4.00%	-6.25%	-22.58%	-31.03%	100.00%	51,938	0.72	0.00	-	279.51	Diverse	4.05%
▲ IFS PE**	US\$	28.05	2.19%	4.27%	-3.94%	-9.34%	95.00%	453,705	1.15	2.75	15.82	3,238.31	Diverse	7.22%
▲ INRET1 PE**	US\$	40.99	-0.02%	2.48%	8.38%	4.57%	100.00%	159,258	0.80	1.66	84.06	4,214.07	Diverse	5.28%
▼ LUSURC1 PE**	S/.	11.90	-3.25%	-8.46%	-8.46%	-53.33%	75.00%	8,610	0.97	7.23	11.98	1,548.02	Public Services	1.81%
▼ MINSUR1 PE**	S/.	3.12	-1.89%	-4.00%	22.35%	68.65%	100.00%	142,404	0.96	0.00	82.28	2,402.95	Mining	3.09%
▼ PML PE**	US\$	0.13	-3.03%	-5.19%	-10.49%	20.75%	80.00%	22,760	1.42	0.00	-	33.82	Mining	2.12%
▲ RELAPAC1 PE**	S/.	0.12	1.69%	2.56%	0.00%	73.91%	95.00%	41,959	0.97	0.00	3.26	266.69	Industrial	2.12%
▲ SCCO PE**	US\$	70.75	-7.71%	-12.68%	-5.41%	7.36%	100.00%	273,706	1.13	3.11	24.58	54,694.93	Mining	2.14%
▼ SIDERC1 PE**	S/.	1.02	-3.77%	-6.42%	7.37%	20.00%	100.00%	51,013	0.96	22.01	8.17	241.95	Industrial	1.43%
▼ TV PE**	US\$	0.21	-5.83%	1.94%	37.25%	42.86%	100.00%	28,952	1.35	0.00	-	207.71	Mining	2.93%
▼ UNACEMC1 PE**	S/.	1.56	-1.27%	0.65%	4.70%	0.65%	95.00%	17,703	0.95	1.67	34.17	757.69	Industrial	3.00%
▼ VOLCABC1 PE**	S/.	0.73	-2.67%	-6.41%	-3.95%	40.38%	100.00%	259,204	1.39	0.00	-	794.99	Mining	5.90%
- NEXAPEC1 PE**	S/.	3.40	0.00%	-5.56%	7.94%	20.14%	70.00%	19,982	1.15	0.00	-	1,199.93	Mining	1.56%

Quantity of shares: 26  
 Source: Bloomberg, Economatika  
 \* Bloomberg Industry Classification System  
 \*\* PER is used in the stock market and original currency of the instrument  
 \*Legend: Variation 1D: 1 Day; 5D: 5 Days, 1M: 1 Month; YTD: Var.% 12/31/20 to date

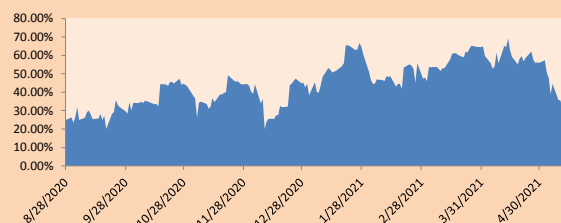
### Sectorial Indices

	Close	1D*	5D*	30D*	YTD*	Beta
▼ S&P/BVLMining	436.33	-5.79%	-8.21%	2.18%	11.89%	1.12
▼ S&P/BVLConsumer	1,139.91	-1.74%	-0.04%	3.38%	4.71%	0.58
▼ S&P/BVLIndustrials	195.85	-1.20%	-1.18%	-1.11%	2.78%	0.63
▼ S&P/BVLFinancials	939.49	-0.66%	-0.17%	4.79%	-9.13%	1.24
▼ S&P/BVLConstruction	203.60	-1.78%	-1.08%	-1.77%	-2.64%	0.62
▼ S&P/BVLPublicSvcs	586.52	-1.18%	-1.25%	-6.31%	-4.49%	0.42
▼ S&P/BVLElectricUtil	572.59	-1.18%	-1.25%	-6.30%	-4.49%	0.42

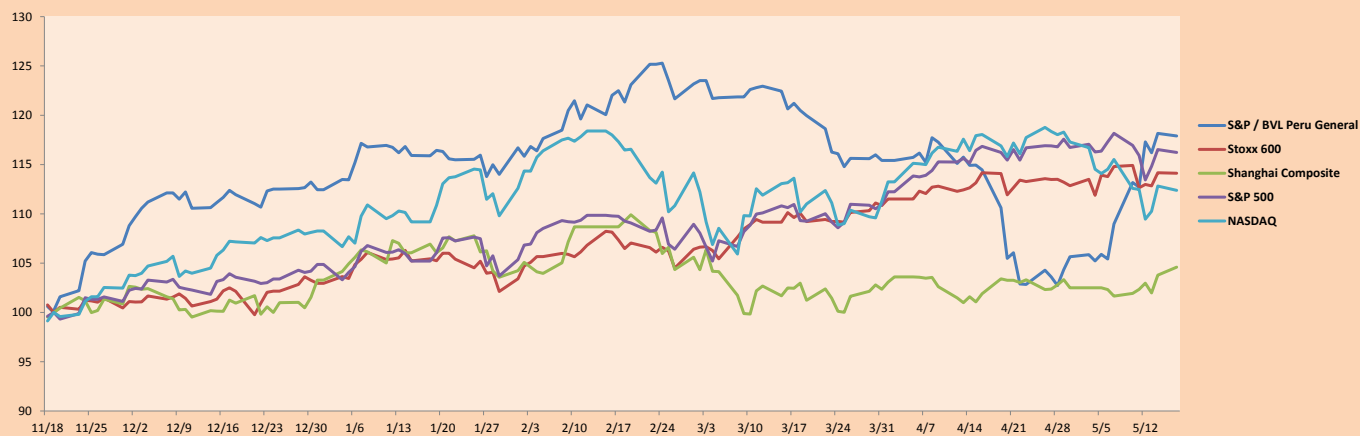
S&P/BVLConstructionTRPEN

\*Legend: Variation 1D: 1 Day; 5D: 5 Days, 1M: 1 Month; YTD: Var.% 12/31/20 to date

Correlation Graph of Returns of Mining Index against Metallic Index of London (3 months)



Indices (6 months)



Base: 19/11/20=100  
 Source: Bloomberg

Capital Market Laboratory Coordinator: Economist Bruno Bellido  
 Collaboration: Maria Camarena, Alonso Garcia, Adrian Paredes and Jairo Valverde  
 email: pulsobursatil@ulima.edu.pe  
 facebook: www.facebook.com/pulsobursatil.ul

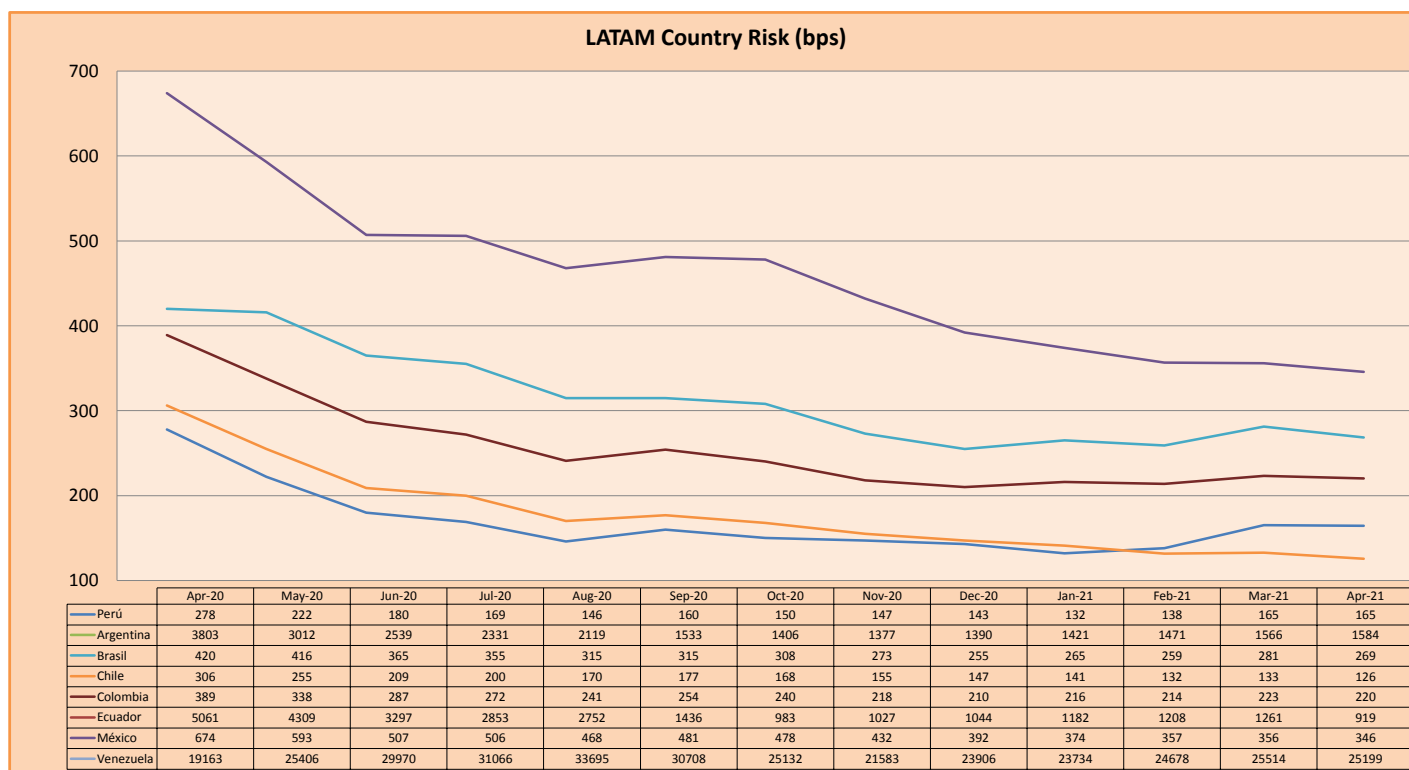
## SOVEREIGN RATING

RISK RATINGS			
Moody's	S&P	Fitch	
Aaa	AAA	AAA	Prime
Aa1	AA+	AA+	High credit quality
Aa2	AA	AA	
Aa3	AA-	AA-	
A1	A+	A+	Medium-high grade, with low credit risk
A2	A	A	
A3	A-	A-	
Baa1	BBB+	BBB+	Moderate Credit Risk
Baa2	BBB	BBB	
Baa3	BBB-	BBB-	
Ba1	BB+	BB+	It has speculative elements and it is subject to substantial credit risk
Ba2	BB	BB	
Ba3	BB-	BB-	
B1	B+	B+	It is considered speculative and it has high credit risk
B2	B	B	
B3	B-	B-	
Caa1	CCC+	CCC	Bad credit conditions and it is subject to high credit risk
Caa2	CCC		
Caa3	CCC-		
Ca	C	DDD	Very close to default or in default
C	D		

Source: Bloomberg

Latin America Credit Rating			
Clasificadora de riesgo			
Country	Moody's	Fitch	S&P
Peru	A3	BBB+	BBB+
México	Ba2	BB-	BB-
Venezuela	C	WD	SD
Brazil	Ba2	BB-	BB-
Colombia	Baa2	BBB-	BBB-
Chile	A1	A-	A
Argentina	Ca	WD	CCC+
Panama	Baa2	BBB-	BBB

Source: Bloomberg



Source: BCRP

Capital Market Laboratory Coordinator: Economist Bruno Bellido  
Collaboration: María Camarena, Alonso García, Adrian Paredes and Jairo Valverde  
email: [pulsobursatil@ulima.edu.pe](mailto:pulsobursatil@ulima.edu.pe)  
facebook: [www.facebook.com/pulsobursatil.ul](https://www.facebook.com/pulsobursatil.ul)