

PULSO BURSÁTIL

FACULTAD DE CIENCIAS EMPRESARIALES Y ECONÓMICAS
CARRERA DE ECONOMÍA
LABORATORIO DE MERCADO DE CAPITALES

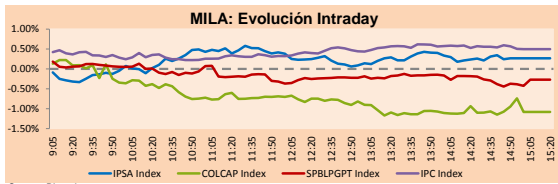


MILA

Lima, May 26, 2021

Main Indexes	Close	1 D	5 D	1 M	YTD	Cap. Burs. (US\$ bill)
▲ IPSA (Chile)	4,119.06	0.68%	-0.60%	-13.26%	-1.39%	116.00
▲ IGPA (Chile)	20,747.09	0.59%	-1.05%	-13.42%	-1.24%	138.70
▲ COLSC (Colombia)	972.81	0.36%	-1.06%	-2.21%	-8.14%	4.41
▲ COLCAP (Colombia)	1,190.78	-1.08%	-5.91%	-7.92%	-17.19%	69.85
▼ S&P/BVL (Perú)*	20,183.17	-0.27%	-4.82%	5.20%	-3.07%	96.64
▼ S&P/BVL SEL (Perú)	531.16	-0.51%	-5.39%	2.50%	-3.67%	86.61
▼ S&P/BVL LIMA 25	25,741.52	-0.36%	-6.93%	6.05%	2.15%	95.81
▲ IPC (México)	49,103.50	0.57%	-0.56%	0.60%	11.43%	307.77
▲ S&P MILA 40	474.23	0.24%	-3.65%	-10.89%	-11.30%	6,118.74

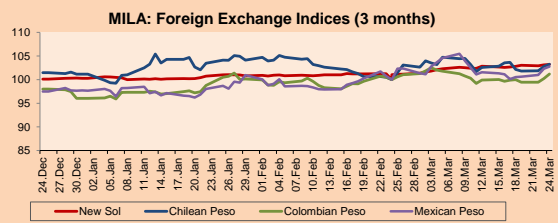
*Legend: Variation 1D: 1 day; 5D: 5 days; 1M: 1 Month; YTD: Var% 12/31/20 to date



Source: Bloomberg

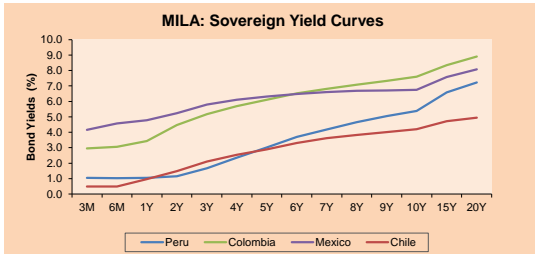
Currency	Price	1D*	5D*	30 D*	YTD*
▲ New Sol (PEN)	3,854.00	0.80%	2.96%	0.39%	6.52%
▼ Chilean Peso (CLP)	729.72	-0.63%	2.47%	3.43%	2.52%
▲ Colombian Peso (COP)	3,743.15	0.22%	1.93%	2.48%	9.14%
▼ Mexican Peso (MXN)	19.88	-0.10%	-0.24%	0.04%	-0.17%

*Legend: Variation 1D: 1 day; 5D: 5 days; 1M: 1 Month; YTD: Var% 12/31/20 to date



Base: 24/02/21=100
Source: Bloomberg

Fixed Income	Currency	Price	Bid Yield (%)	Ask Yield (%)	Duration
PERU 7.35 07/21/25	USD	122.886	1.68	1.56	3.62
PERU 4.125 08/25/27	USD	111.044	2.27	2.18	5.56
PERU 8.75 11/21/33	USD	154.958	3.37	3.30	8.78
PERU 6.55 03/14/37	USD	134.871	3.66	3.60	10.37
PERU 5.625 11/18/2050	USD	131.203	3.87	3.83	16.49
CHILE 2.25 10/30/22	USD	102.526	0.62	0.32	1.41
CHILE 3.125 01/21/26	USD	108.265	1.34	1.24	4.34
CHILE 3.625 10/30/42	USD	104.157	3.37	3.33	15.38
COLOM 11.85 03/09/28	USD	158.853	2.54	2.25	5.19
COLOM 10.375 01/28/33	USD	148.506	4.98	4.77	7.65
COLOM 7.375 09/18/37	USD	129.744	4.78	4.70	10.40
COLOM 6.125 01/18/41	USD	116.26	4.87	4.80	12.03
MEX 4 10/02/23	USD	116.26	4.866	4.8	12.03
MEX5.55 01/45	USD	119.06	4.29	4.24	14.05



Source: Bloomberg

Equity

Largest gains	Exchange	Currency	Price	▲%
SMU CC	Chile	CLP	98.00	5.15
CENCOSUD CC	Chile	CLP	1345.00	3.46
CENCOSHO CC	Chile	CLP	1198.00	3.45
BIMBOA MF	Mexico	MXN	42.55	3.15
PEOLES* MF	Mexico	MXN	283.74	2.47

Per Turnover	Exchange	Amount (US\$)
WALMEX* MF	Mexico	52,767,517
AMXL MF	Mexico	34,384,292
GFNORTEO MF	Mexico	33,665,837
FEMSAUBD MF	Mexico	24,819,410
MEXICOB MF	Mexico	23,026,820

Largest losses	Exchange	Currency	Price	▼%
INRETC1 PE	Peru	USD	37	-4.64
AESGENER CC	Chile	CLP	102.47	-4.55
PFDAVND CX	Colombia	COP	28600	-3.48
ISA CX	Colombia	COP	19600	-2.97
PFAVAL CX	Colombia	COP	1051	-2.69

Per Volume	Exchange	Volume
ITAUCORP CC	Chile	546,914,116
BSAN CC	Chile	252,393,661
CHILE CC	Chile	137,453,662
ENELCHIL CC	Chile	117,959,486
ENELAM CC	Chile	55,564,573

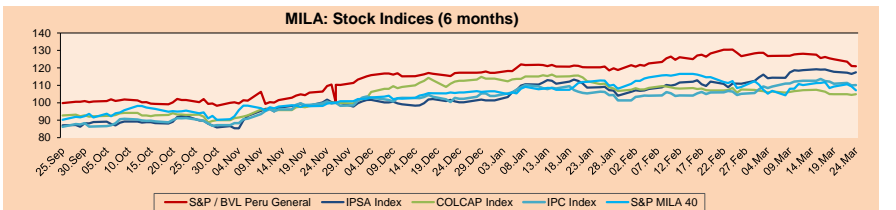
MILA

Peru: The BVL General Index ended today's session with a negative result of -0.27%. The index maintains a positive accumulated annual trend of -3.07% in local currency, while the adjusted yield in dollars amounts to -9.00%. Then, the S&P / BVL Peru SEL varied by -0.51% while the S&P / BVL LIMA 25 by -0.36%. The PEN spot reached 3,854.00. Headline: Dollar reached a record of 3,854, despite the fact that the BCR sold US \$ 469 million in three days

Chile: The IPSA index ended the day with a positive return of +0.68%. The sectors that benefited the most from the session were Consumer Goods (+ 2.13%) and Discretionary Consumer Products (+ 1.89%). The best performing stocks were SMU SA (+ 5.15%) and Ripley Corp SA (+ 4.46%). Headline: Chilean stock market rebounds, but Latam is not saved from a sharp fall after noise in Brazil

Colombia: The COLCAP index closed today with a negative return of -1.08%. The least benefited sectors in the session were Basic Services (-1.45%) and Energy (-0.61%). The worst performing stocks were Interconexión Eléctrica SA ESP (-2.97%) and Grupo Aval Ltd (-2.69%). Owner: Stoppage and blockades have affected Ecopetrol's operation

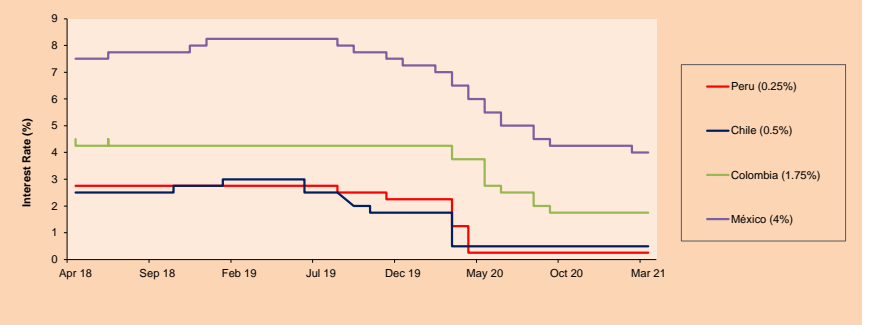
Mexico: The IPC index closed the day with a positive return of +0.57%. The sectors that benefited the most during the session were Real Estate (+ 4.38%) and Communication Services (+ 1.10%). The best performing stocks were Corp Inmobiliaria Vesta SAB de CV (+ 4.38%) and Grupo Bimbo SAB de CV (+ 3.15%). Headline: Mexico's economic activity has a "rebound" of 2.6% in March



Base: 25/09/20=100
Source: Bloomberg

ETFs	Curr.	Close	1D	5D	30 D	YTD	Exchange
▼ iShares MSCI All Peru Caped Index Fund	USD	31.45	-0.29%	-6.15%	-1.35%	-9.31%	NYSE Arca
▲ iShares MSCI All Chile Caped Index Fund	USD	27.97	0.79%	-1.38%	-19.53%	-7.41%	Cboe BZX
▲ Global X MSCI Colombia	USD	9.61	-1.03%	-3.78%	-3.80%	-15.40%	NYSE Arca
▲ iShares MSCI Mexico Capped	USD	47.38	0.47%	0.06%	0.85%	10.21%	NYSE Arca
▲ iShares MSCI Emerging Markets	USD	54.51	0.74%	1.98%	-0.35%	5.50%	NYSE Arca
▲ Vanguard FTSE Emerging Markets	USD	53.5	0.73%	2.02%	0.22%	6.77%	NYSE Arca
▲ iShares Core MSCI Emergina Markets	USD	66.2	0.81%	2.16%	-0.08%	6.71%	NYSE Arca
▲ iShares JP Morgan Emerging Markets Bonds	USD	64.59	0.65%	2.05%	1.10%	5.75%	Cboe BZX
▲ Morgan Stanley Emerging Markets Domestic	USD	6.24	1.30%	1.96%	1.79%	-0.79%	New York

MILA: Policy Rate



Source: Bloomberg

Capital Market Laboratory Coordinator: Economist Bruno Bellido
Collaboration: María Camarena, Alonso García, Adrian Paredes and Jairo Valverde
email: pulsobursatil@ulima.edu.pe
facebook: www.facebook.com/pulsobursatil

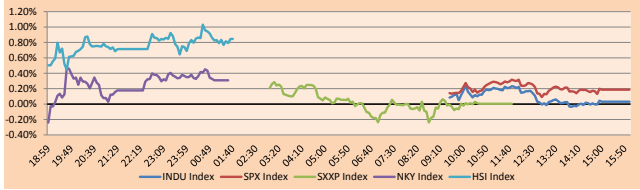
The content of this document is just for informational purposes. The information and opinions expressed should not be considered as recommendations for future decisions. Under any circumstances, the Capital Market Laboratory of University of Lima will be responsible for the use of the statements in this document.

WORLD

Main Indices	Close	1 D*	5 D*	1 M*	YTD*	Market Cap. (US\$ Mill.)
▲ Dow Jones (USA)	34,323.05	0.03%	1.28%	0.99%	12.14%	10,193,965
▲ Standard & Poor's 500 (EEUU)	4,195.99	0.19%	1.95%	0.22%	11.71%	37,069,573
▲ NASDAQ Composite (USA)	13,738.00	0.59%	3.30%	-2.50%	6.59%	22,875,977
- Stoxx EUROPE 600 (Europe)	445.22	0.00%	2.04%	1.22%	11.58%	10,060,395
▼ DAX (Germany)	15,450.72	-0.09%	0.42%	1.32%	12.62%	1,135,446
▼ FTSE 100 (United Kingdom)	7,026.93	-0.04%	1.10%	1.18%	8.77%	1,440,575
▲ CAC 40 (France)	6,391.60	0.02%	2.08%	1.88%	15.13%	1,728,334
▼ IBEX 35 (Spain)	9,196.90	-0.13%	1.39%	5.03%	13.91%	505,841
▲ MSCI AC Asia Pacific Index	207.16	0.27%	1.74%	-0.60%	3.62%	26,639,302
▲ HANG SENG (Hong Kong)	29,166.01	0.88%	2.00%	0.36%	6.67%	4,462,120
▲ SHANGHAI SE Comp. (China)	3,593.36	0.34%	2.35%	4.21%	3.30%	6,984,014
▲ NIKKEI 225 (Japan)	28,642.19	0.31%	2.13%	-1.96%	3.57%	3,932,290
▲ S&P / ASX 200 (Australia)	7,092.53	-0.32%	2.32%	0.83%	7.67%	1,738,697
▲ KOSPI (South Korea)	3,168.43	0.57%	-0.56%	-2.11%	9.54%	1,096,358

*Legend: Variation 1D: 1 Day; 5D: 5 Days; 1M: 1 Month; YTD: Var. % 12/31/20 to date

Global Markets: Intraday Evolution (var %)

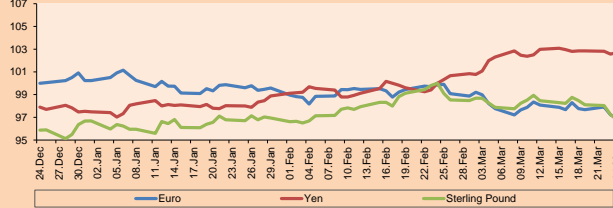


Source: Bloomberg

Currency	Price	1 D*	5 D*	1 M*	YTD*
▼ Euro	1,2192	-0.47%	0.14%	0.88%	-0.20%
▲ Yen	109,1500	0.34%	-0.06%	0.99%	5.71%
▼ Sterling Pound	1,4119	-0.24%	0.03%	1.58%	3.28%
▼ Yuan	6,3908	-0.31%	-0.69%	-1.46%	-2.09%
▼ Hong Kong Dollar	7,7623	0.00%	-0.03%	0.03%	0.12%
▼ Brazilian Real	5,3120	-0.37%	0.03%	-2.30%	2.18%
▲ Argentine Peso	94,4850	0.22%	0.30%	1.29%	12.29%

*Legend: Variation 1D: 1 Day; 5D: 5 Days; 1M: 1 Month; YTD: Var. % 12/31/20 to date

Foreign Exchange Indices (3 months)

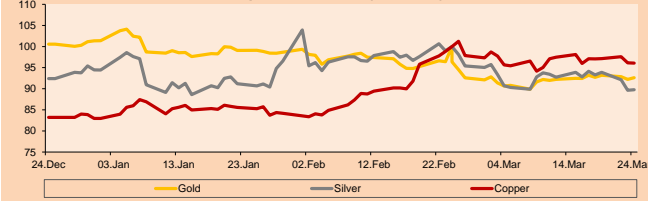


Base: 24/02/21=100
Source: Bloomberg

Commodities	Close	1 D*	5 D*	1 M*	YTD*
▼ Oro (US\$ Oz. T) (LME)	1,896.67	-0.14%	1.45%	6.47%	-0.09%
▼ Plata (US\$ Oz. T) (LME)	27.68	-1.13%	-0.20%	5.56%	4.85%
▲ Cobre (US\$ TM) (LME)	9,961.25	0.61%	-0.19%	1.95%	28.55%
▼ Zinc (US\$ TM) (LME)	2,949.25	-0.64%	0.98%	1.68%	8.06%
▲ Petróleo WTI (US\$ Barril) (NYM)	66.21	0.21%	4.51%	7.14%	38.46%
▲ Estiaino (US\$ TM) (LME)	31,025.00	-1.80%	-3.66%	9.82%	51.01%
▲ Plomo (US\$ TM) (LME)	2,173.25	0.84%	-0.01%	5.73%	10.00%
▲ Aplicar #11 (US\$ Libra) (NYB-ICE)	16.78	-1.53%	-1.00%	-1.81%	18.25%
▲ Gasca (US\$ TM) (NYB-ICE)	2,459.00	1.32%	-2.27%	-1.76%	-1.88%
▲ Café Arábica (US\$ TM) (NYB-ICE)	155.70	3.46%	3.15%	8.62%	18.09%

*Leyenda: Variación 1D: 1 Día; 5D: 5 Días; 1M: 1 Mes; YTD: Var. % 31/12/20 a la fecha

Principal Metals Index (3 months)



Base: 24/02/21=100
Source: Bloomberg

Equity

Germany (Stocks from DAX Index)

Largest gains	Curr.	Price	▲ %	Exchange	Largest losses	Curr.	Price	▼ %	Exchange
DAI GY	EUR	77.54	1.17	Xetra	DBK GY	EUR	12.128	-1.16	Xetra
DPW GY	EUR	54.19	1.10	Xetra	MUV2 GY	EUR	233.7	-1.14	Xetra
HEI GY	EUR	74.32	0.95	Xetra	RWE GY	EUR	32.01	-0.84	Xetra
SAP GY	EUR	116.02	0.82	Xetra	FRE GY	EUR	44.225	-0.81	Xetra

Europe (Stocks from STOXX EUROPE 600)

Largest gains	Curr.	Price	▲ %	Exchange	Largest losses	Curr.	Price	▼ %	Exchange
SCT LN	Gbp	1929	6.93	Londres	ITRK LN	Gbp	5650	-5.01	Londres
NEL NO	NOK	17.685	4.00	Oslo	CA FP	EUR	16.37	-3.85	EN Paris
NESTE FH	EUR	53.46	3.20	Helsinki	OCDO LN	Gbp	1929.5	-3.81	Londres
LOGN SE	CHF	107	3.18	SIX Swiss Ex	BLND LN	Gbp	500.6	-3.66	Londres

Global Overview:

United States:

Major U.S. indices ended the day's session slightly higher after the world's major central banks announced that they would maintain their economic support despite the outbreak of inflation. In economic data, the U.S. consumer confidence index for May fell to 117.2 points below the analysts' estimate of 119.2. Thus, the S&P 500 closed higher driven by the Energy +0.93% and Communication Products +0.90% sectors; the last few days cyclical sectors have benefited from elevated vaccination rates and a decrease in new case reports. On the other hand, the technology index benefited from the drop in Treasury yields which stood at 1.5638% reaching a 2-week low. In individual stocks, GameStop +15.80% driven by speculations around the production of digital video games. Finally, shares of Abercrombie +11.70%; Urban Outfitters +12.4%; Dick's +11.59% closed higher after better earnings in the first quarter of the year. Thus, DOW JONES +0.03%; S&P 500 +0.19%; NASDAQ +0.59% closed the session with slight gains.

Europe:

The main European index ended with mixed results, as investors are attentive to the inflation outlook. Eurozone stocks closed flat after central bank policymakers pledged to keep monetary policy loose. As a result, the pan-European STOXX 600 index was unchanged, with falling banking stocks offsetting gains in travel and leisure. Recently, the STOXX 600 reached a new all-time high, after rising about 12% since the beginning of the year. Also, according to a Reuters poll of strategists, eurozone stocks will remain slightly above current record levels, predicting that the STOXX 600 would reach 451 points by the end of the year. In the commodities market, Bloomberg highlights gold's fall from a four-month high due to the tension between central banks' views. In the stock market, Reuters puts Marks & Spencer +8.50%, after announcing that its earnings would recover from an 88% drop in profits last year. In turn, Danone -1.82%, after Berenberg downgraded the stock to "sell". Thus, the STOXX 600 0.00%, CAC 40 +0.02%, FTSE 100 -0.04% and DAX -0.09% closed the day with mixed performances.

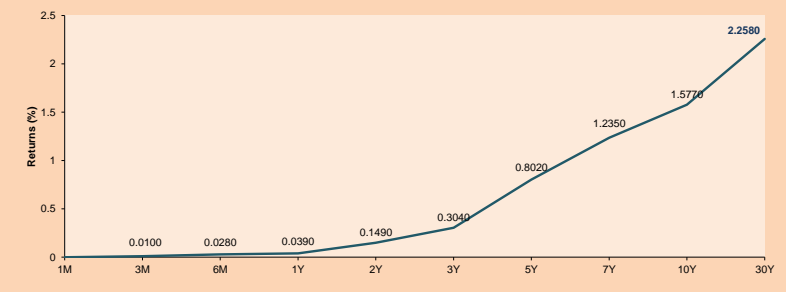
Asia:

The major Asian indexes posted mixed returns, due to warning concerns about rising inflation and the boost from certain riskier sectors. Shares in China ended higher as easing inflationary tensions and an appreciation of the Yuan boosted risk appetite. However, Hong Kong shares ended higher, thanks to the FED's announcement of a moderate monetary policy, boosting the Consumer Cyclical sector + 2.29% and the Industrial sector + 1.44%. Similarly, Japan's index closed higher, mitigated by inflationary concerns and infection control in the country. On the other hand, the South Korean index closed with negative returns, weighed down by LG Chem's fall by almost 7%, overshadowing the good news from the United States. Finally, relative to shares, Xiaomi Corp rises by 1.4% thanks to the lifting of its restrictions in the United States and LG Chem falls by -6.73% after withdrawing from ESS battery production, which would represent a cost 350 million dollars. Thus, S&P/ASX200 -0.32%, KOSPI -0.09%, Nikkei + 0.31%, CSI300 + 0.04%, HangSeng + 0.88% finished with mixed returns.

ETFs

ETFs	Curr.	Close	1D	5D	30 D	YTD	Exchange
SPDR S&P 500 ETF TRUST	USD	419.07	0.20%	2.00%	0.35%	12.09%	NYSE Arca
ISHARES MSCI EMERGING MARKET	USD	54.51	0.74%	1.98%	-0.35%	5.50%	NYSE Arca
ISHARES IBOXX HIGH YLD CORP	USD	87.25	0.03%	0.74%	-0.09%	-0.06%	NYSE Arca
FINANCIAL SELECT SECTOR SPDR	USD	37.49	0.29%	0.81%	5.55%	27.17%	NYSE Arca
VANECK GOLD MINERS	USD	39.46	-0.15%	1.08%	9.67%	9.55%	NYSE Arca
ISHARES RUSSELL 2000 ETF	USD	223.35	1.87%	2.48%	-2.09%	13.92%	NYSE Arca
SPDR GOLD SHARES	USD	177.64	-0.17%	1.42%	6.47%	-0.40%	NYSE Arca
ISHARES 20+ YEAR TREASURY BO	USD	139.22	-0.17%	2.28%	-0.46%	-11.74%	NASDAQ GM
INVESCO QQQ TRUST SERIES 1	USD	334.13	0.35%	3.58%	-2.20%	6.50%	NASDAQ GM
ISHARES NASDAQ BIOTECHNOLOGY	USD	150.59	0.60%	0.97%	-4.86%	-0.59%	NASDAQ GM
ENERGY SELECT SECTOR SPDR	USD	52.07	0.89%	-0.12%	8.80%	37.39%	NYSE Arca
PROSHARES ULTRA VIX ST FUTUR	USD	38.12	-8.80%	-22.04%	-16.59%	-64.21%	Close BZX
UNITED STATES OIL FUND LP	USD	45.20	0.62%	4.08%	6.79%	36.93%	NYSE Arca
ISHARES MSCI BRAZIL ETF	USD	37.71	1.48%	0.58%	5.34%	1.73%	NYSE Arca
SPDR S&P OIL & GAS EXP & PR	USD	87.67	2.78%	1.40%	12.72%	49.86%	NYSE Arca
UTILITIES SELECT SECTOR SPDR	USD	65.25	0.02%	0.00%	-1.44%	4.07%	NYSE Arca
ISHARES US REAL ESTATE ETF	USD	99.84	0.33%	2.63%	1.50%	16.57%	NYSE Arca
SPDR S&P BIOTECH ETF	USD	126.96	2.17%	1.61%	-8.64%	-9.82%	NYSE Arca
ISHARES IBOXX INVESTMENT GRA	USD	132.00	-0.05%	1.35%	0.30%	-4.44%	NYSE Arca
ISHARES JP MORGAN USD EMERGI	USD	111.84	-0.01%	1.08%	0.83%	-3.51%	NASDAQ GM
REAL ESTATE SELECT SECT SPDR	USD	43.02	0.23%	2.70%	1.63%	17.67%	NYSE Arca
ISHARES CHINA LARGE-CAP ETF	USD	46.43	0.61%	2.88%	-0.94%	0.00%	NYSE Arca
CONSUMER STAPLES SPDR	USD	71.10	-0.21%	1.05%	3.36%	5.41%	NYSE Arca
VANECK JR GOLD MINERS	USD	54.18	-0.53%	2.03%	8.95%	-0.11%	NYSE Arca
SPDR BBG BARC HIGH YIELD BND	USD	108.96	0.06%	0.75%	-0.05%	0.02%	NYSE Arca
VANGUARD REAL ESTATE ETF	USD	99.51	0.44%	2.70%	1.47%	11.71%	NYSE Arca
GRAYSCALE BITCOIN TRUST BTC	USD	32.05	1.71%	-1.69%	-30.19%	0.16%	OTC US

USA Treasury Bonds Yield Curve (%)



Source: Bloomberg

Capital Market Laboratory Coordinator: Economist Bruno Bellido
Collaboration: María Camarena, Alonso García, Adrian Paredes and Jairo Valverde
email: pulsohorsatil@ulima.edu.pe
facebook: www.facebook.com/pulsohorsatil.u

LIMA

Stocks

Ticker	Currency	Price	1D*	5D*	30D*	YTD*	Frequency	Volume (US\$)	Beta	Dividend Yield (%)	Price Earning	Market Cap. (M US\$)	Economic Sector*	Index Weight
▲ ALICORC1 PE**	S/.	6.09	0.36%	-1.06%	-2.21%	-8.14%	100.00%	907,591	0.78	4.11	11.49	1,347.91	Industrial	3.53%
▲ ATACOCB1 PE**	S/.	0.11	0.91%	-19.57%	0.00%	-19.57%	80.00%	12,563	1.15	0.00	-	27.21	Mining	1.02%
▼ BACKUS1 PE**	S/.	17.50	-1.91%	-10.26%	-4.37%	-13.15%	100.00%	50,936	0.71	2.01	8.44	6,577.91	Industrial	0.82%
▼ BAP PE**	US\$	129.80	-0.32%	-8.85%	7.01%	-19.18%	100.00%	2,932,535	1.16	6.78	-	12,250.83	Diverse	5.82%
▼ BVN PE**	US\$	11.20	-0.97%	-1.41%	10.67%	-6.67%	100.00%	845,425	1.21	0.00	-	3,081.81	Mining	5.88%
- CASAGRC1 PE**	S/.	5.10	0.00%	-13.56%	13.08%	7.37%	75.00%	8,158	0.94	4.43	3.76	111.47	Agricultural	1.31%
▼ BBVAC1 PE**	S/.	1.95	-2.01%	-10.14%	-3.47%	-10.14%	100.00%	45,708	0.88	2.32	27.84	3,303.55	Finance	2.85%
▲ CORAREH1 PE**	S/.	1.05	7.14%	-7.89%	25.00%	17.98%	100.00%	225,984	1.18	9.19	3.36	377.18	Industrial	1.72%
▲ CPACASC1 PE**	S/.	5.27	-0.57%	-6.06%	2.33%	-0.57%	100.00%	34,239	0.69	4.36	37.64	629.77	Industrial	2.38%
▼ CVERDEC1 PE**	US\$	17.90	-0.56%	-16.74%	-3.24%	-14.44%	100.00%	546,316	1.39	3.19	10.25	6,266.00	Mining	5.25%
- ENGEPEC1 PE**	S/.	2.10	0.00%	-7.08%	11.70%	5.00%	90.00%	14,848	0.72	9.40	12.84	1,546.80	Public Services	1.44%
- ENDISPC1**	S/.	4.50	0.00%	-9.09%	12.50%	-16.67%	60.00%	101,967	0.77	0.00	10.12	745.60	Public Services	0.98%
- FERREYC1 PE**	S/.	1.74	0.00%	-8.42%	2.35%	0.00%	100.00%	77,771	0.88	10.47	11.57	440.50	Diverse	4.90%
▲ AENZAC1 PE**	S/.	1.13	1.80%	-5.83%	-2.59%	-35.06%	95.00%	61,646	0.70	0.00	-	255.65	Diverse	4.05%
▼ IFS PE**	US\$	26.39	-1.24%	-5.92%	-4.04%	-14.71%	100.00%	1,086,662	1.11	2.92	15.32	3,046.66	Diverse	7.22%
▼ INRETC1 PE**	US\$	37.00	-4.64%	-9.73%	6.32%	-5.61%	100.00%	1,378,830	0.84	1.84	78.10	3,803.87	Diverse	5.28%
▲ LUSURC1 PE**	S/.	11.50	4.55%	-3.36%	-4.17%	-54.90%	85.00%	5,595	0.95	7.48	12.46	1,453.02	Public Services	1.81%
▼ MINSUR1 PE**	S/.	2.84	-1.05%	-8.97%	29.68%	53.51%	95.00%	62,842	0.98	0.00	5.61	2,124.47	Mining	3.09%
- PML PE**	US\$	0.12	0.00%	-6.25%	9.09%	13.21%	65.00%	19,800	1.43	0.00	-	31.70	Mining	2.12%
▲ RELAPAC1 PE**	S/.	0.11	4.67%	-6.67%	12.00%	62.32%	95.00%	9,569	1.07	0.00	2.96	241.76	Industrial	2.12%
▲ SCCO PE**	US\$	67.59	0.28%	-4.47%	-6.84%	2.56%	90.00%	796,757	1.13	3.25	23.48	52,252.02	Mining	2.14%
▲ SIDERC1 PE**	S/.	0.97	3.19%	-4.90%	24.36%	14.12%	85.00%	35,847	1.00	23.14	7.77	223.48	Industrial	1.43%
▼ TV PE**	US\$	0.20	-2.50%	-7.14%	21.88%	32.65%	95.00%	24,930	1.29	0.00	-	192.87	Mining	2.93%
▼ UNACEMC1 PE**	S/.	1.43	-1.38%	-8.33%	15.32%	-7.74%	95.00%	972,014	0.96	1.82	31.33	674.60	Industrial	3.00%
▼ VOLCABC1 PE**	S/.	0.66	-1.49%	-9.59%	0.00%	26.92%	100.00%	137,576	1.45	0.00	-	698.12	Mining	5.90%
- NEXAPEC1 PE**	S/.	3.14	0.00%	-7.65%	17.60%	10.95%	90.00%	53,832	1.14	0.00	24.36	1,077.10	Mining	1.56%

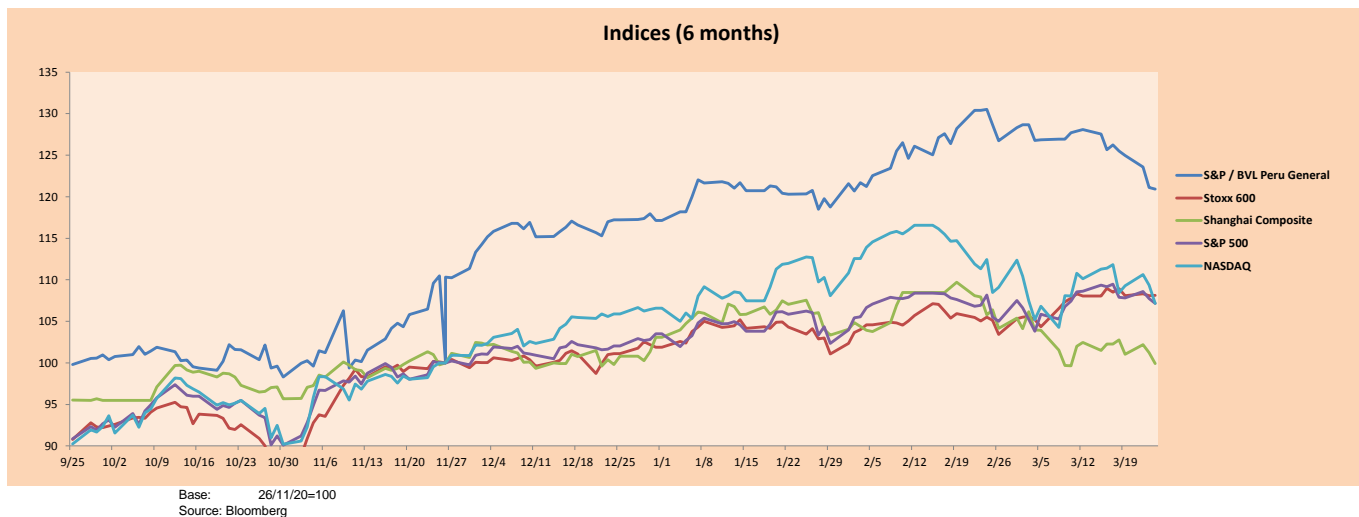
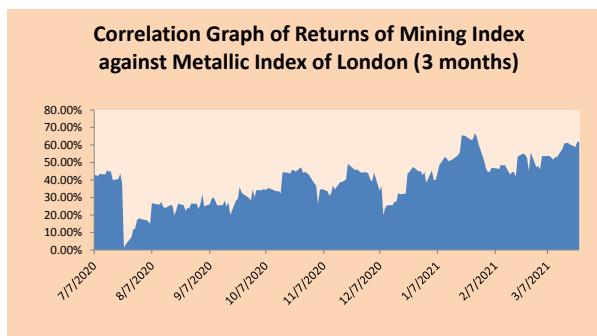
Quantity of shares: 26
 Source: Bloomberg, Económica
 * Bloomberg Industry Classification System
 ** PER is used in the stock market and original currency of the instrument
 *Legend: Variation 1D: 1 Day; 5D: 5 Days, 1M: 1 Month; YTD: Var.% 12/31/20 to date

Sectorial Indices

	Close	1D*	5D*	30D*	YTD*	Beta
▲ S&P/BVLMining	426.19	0.46%	-2.32%	0.50%	9.29%	0.91
▼ S&P/BVLConsumer	1,033.43	-2.31%	-9.34%	-0.75%	-5.07%	0.42
▲ S&P/BVLIndustrials	182.31	0.09%	-6.91%	5.84%	-4.33%	0.49
▲ S&P/BVLFinancials	900.15	0.30%	-4.19%	6.10%	-12.94%	1.77
▲ S&P/BVLConstruction	190.89	0.05%	-6.24%	7.31%	-8.72%	0.54
- S&P/BVLPublicSvcs	550.23	0.00%	-6.19%	6.52%	-10.40%	0.15
- S&P/BVLElectricUtil	537.16	0.00%	-6.19%	6.52%	-10.40%	0.15

S&P/BVLConstructionTRPEN

*Legend: Variation 1D: 1 Day; 5D: 5 Days, 1M: 1 Month; YTD: Var.% 12/31/20 to date



Capital Market Laboratory Coordinator: Economist Bruno Bellido
 Collaboration: María Camarena, Alonso García, Adrían Paredes and Jairo Valverde
 email: pulsobursatil@ulima.edu.pe
 facebook: www.facebook.com/pulsobursatil

SOVEREIGN RATING

RISK RATINGS

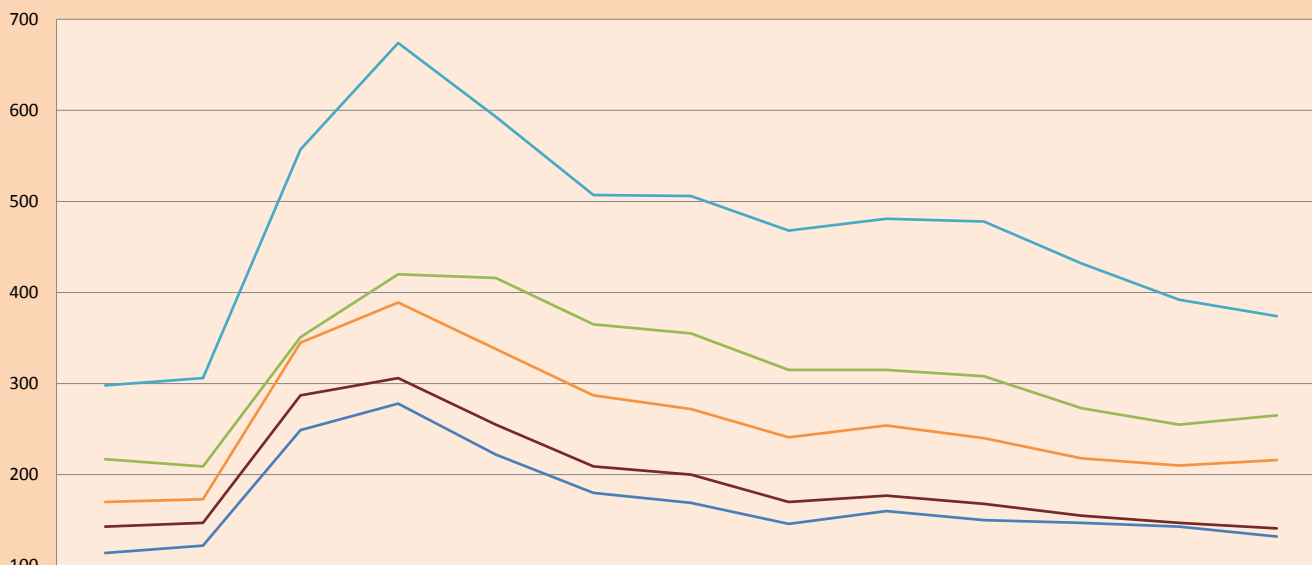
Moody's	S&P	Fitch		
Aaa	AAA	AAA	Prime	
Aa1	AA+	AA+	High credit quality	
Aa2	AA	AA		
Aa3	AA-	AA-		
A1	A+	A+	Medium-high grade, with low credit risk	
A2	A	A		
A3	A-	A-		
Baa1	BBB+	BBB+	Moderate Credit Risk	
Baa2	BBB	BBB		
Baa3	BBB-	BBB-		
Ba1	BB+	BB+	It has speculative elements and it is subject to substantial credit risk	
Ba2	BB	BB		
Ba3	BB-	BB-		
B1	B+	B+	It is considered speculative and it has high credit risk	
B2	B	B		
B3	B-	B-		
Caa1	CCC+	CCC	Bad credit conditions and it is subject to high credit risk	
Caa2	CCC			
Caa3	CCC-			
Ca	C	DDD	Very close to default or in default	
C	D			DD
				D

Source: Bloomberg

Latin America Credit Rating			
Clasificadora de riesgo			
Country	Moody's	Fitch	S&P
Peru	A3	BBB+	BBB+
México	Ba2	BB-	BB-
Venezuela	C	WD	SD
Brazil	Ba2	BB-	BB-
Colombia	Baa2	BBB-	BB+
Chile	A1	A-	A
Argentine	Ca	WD	CCC+
Panama	Baa2	BBB-	BBB

Source: Bloomberg

LATAM Country Risk (bps)



	Jan-20	Feb-20	Mar-20	Apr-20	May-20	Jun-20	Jul-20	Aug-20	Sep-20	Oct-20	Nov-20	Dec-20	Jan-21
Perú	114	122	249	278	222	180	169	146	160	150	147	143	132
Brasil	217	209	351	420	416	365	355	315	315	308	273	255	265
México	298	306	557	674	593	507	506	468	481	478	432	392	374
Colombia	170	173	345	389	338	287	272	241	254	240	218	210	216
Chile	143	147	287	306	255	209	200	170	177	168	155	147	141

Source: BCRP

Capital Market Laboratory Coordinator: Economist Bruno Bellido
Collaboration: Maria Camarena, Alonso Garcia, Adrian Paredes and Jairo Valverde
email: pulsobursatil@ulima.edu.pe
facebook: www.facebook.com/pulsobursatil.ul