

# PULSO BURSÁTIL

FACULTAD DE CIENCIAS EMPRESARIALES Y ECONÓMICAS  
CARRERA DE ECONOMÍA  
LABORATORIO DE MERCADO DE CAPITALES

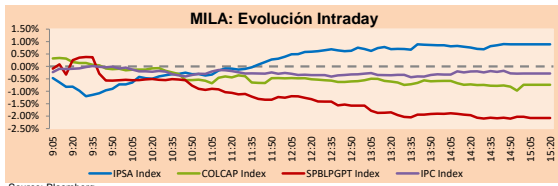


## MILA

Lima, June 15, 2021

| Main Indexes         | Close     | 1 D    | 5 D    | 1 M     | YTD     | Cap. Burs. (US\$ bill) |
|----------------------|-----------|--------|--------|---------|---------|------------------------|
| ▲ IPSA (Chile)       | 4,361.62  | 0.38%  | 4.54%  | -4.66%  | 4.41%   | 121.36                 |
| ▲ IGPA (Chile)       | 21,905.34 | 0.35%  | 4.07%  | -4.98%  | 4.27%   | 145.62                 |
| ▼ COLCAP (Colombia)  | 973.09    | -0.79% | -1.06% | -2.36%  | -8.11%  | 4.57                   |
| ▼ COLCAP (Colombia)  | 1,252.27  | -0.74% | -0.55% | -2.91%  | -12.91% | 76.37                  |
| ▼ S&P/BVL (Perú)*    | 19,202.39 | -2.07% | -5.80% | -12.24% | -7.78%  | 91.84                  |
| ▼ S&P/BVL SEL (Perú) | 505.67    | -2.15% | -4.87% | -12.83% | -8.30%  | 82.26                  |
| ▼ S&P/BVL LIMA 25    | 24,556.50 | -1.78% | -3.56% | -14.17% | -2.55%  | 91.03                  |
| ▲ IPC (México)       | 50,908.18 | -0.24% | 0.08%  | 3.43%   | 15.52%  | 311.47                 |
| ▼ S&P MILA 40        | 489.13    | -1.49% | -1.37% | -9.05%  | -8.51%  | 6,237.30               |

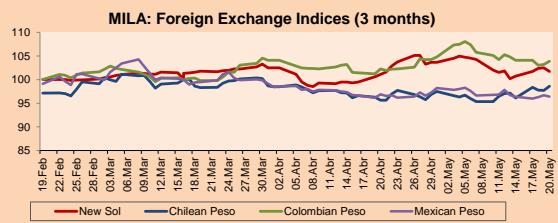
\*Legend: Variation 1D: 1 day; 5D: 5 days; 1M: 1 Month; YTD: Var% 12/31/20 to date



Source: Bloomberg

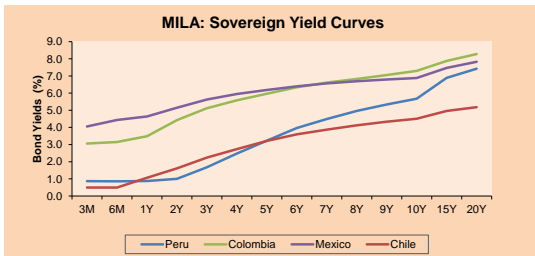
| Currency               | Price    | 1D*    | 5D*    | 30 D*  | YTD*  |
|------------------------|----------|--------|--------|--------|-------|
| ▼ Sol (PEN)            | 3,8824   | -0.33% | -1.25% | 5.53%  | 7.31% |
| ▲ Chilean Peso (CLP)   | 726.75   | 1.18%  | 1.24%  | 3.76%  | 2.10% |
| ▲ Colombian Peso (COP) | 3,663.95 | 1.68%  | 1.64%  | -1.10% | 6.83% |
| ▲ Mexican Peso (MXN)   | 20.03    | 0.31%  | 1.81%  | 0.80%  | 0.56% |

\*Legend: Variation 1D: 1 day; 5D: 5 days; 1M: 1 Month; YTD: Var% 12/31/20 to date



Base: 16/03/21=100  
Source: Bloomberg

| Fixed Income          | Currency | Price   | Bid Yield (%) | Ask Yield (%) | Duration |
|-----------------------|----------|---------|---------------|---------------|----------|
| PERU 7.35 07/21/25    | USD      | 122.855 | 1.62          | 1.51          | 3.57     |
| PERU 4.125 08/25/27   | USD      | 111.676 | 2.15          | 2.06          | 5.51     |
| PERU 8.75 11/21/33    | USD      | 155.92  | 3.29          | 3.21          | 8.75     |
| PERU 6.55 03/14/37    | USD      | 135.976 | 3.58          | 3.51          | 10.34    |
| PERU 5.625 11/18/2050 | USD      | 132.541 | 3.81          | 3.76          | 16.48    |
| CHILE 2.25 10/30/22   | USD      | 102.521 | 0.58          | 0.23          | 1.35     |
| CHILE 3.125 01/21/26  | USD      | 108.385 | 1.30          | 1.19          | 4.29     |
| CHILE 3.625 10/30/42  | USD      | 104.325 | 3.37          | 3.31          | 15.35    |
| COLOM 11.85 03/09/28  | USD      | 159.873 | 2.37          | 2.07          | 5.14     |
| COLOM 10.375 01/28/33 | USD      | 149.944 | 4.84          | 4.63          | 7.61     |
| COLOM 7.375 09/18/37  | USD      | 131.949 | 4.60          | 4.53          | 10.41    |
| COLOM 6.125 01/18/41  | USD      | 118.617 | 4.69          | 4.64          | 12.08    |
| MEX 4 10/02/23        | USD      | 118.617 | 4.685         | 4.643         | 12.08    |
| MEX5.55 01/45         | USD      | 120.172 | 4.21          | 4.18          | 14.07    |



Source: Bloomberg

## Equity

| Largest gains    | Exchange | Currency | Price   | ▲%   |
|------------------|----------|----------|---------|------|
| ENEL AMERICAS SA | Chile    | CLP      | 101.01  | 2.65 |
| GRUPO AEROPORTUA | Mexico   | MXN      | 133.27  | 2.14 |
| FALABELLA SA     | Chile    | CLP      | 3251.00 | 2.01 |
| ECOPETROL        | Colombia | COP      | 2439.00 | 2.01 |
| EMPRESAS COPEC   | Chile    | CLP      | 7599.00 | 2.00 |

| Per Turnover     | Exchange | Amount (US\$) |
|------------------|----------|---------------|
| WALMART DE MEXIC | Mexico   | 42,517,945    |
| GRUPO F BANORT-O | Mexico   | 33,542,564    |
| BECLE SAB DE CV  | Mexico   | 30,368,154    |
| GRUPO MEXICO-B   | Mexico   | 26,156,462    |
| AERO DEL SURES-B | Mexico   | 25,736,159    |

| Largest losses   | Exchange | Currency | Price | ▼%    |
|------------------|----------|----------|-------|-------|
| VOLCAN CIA MIN-B | Peru     | PEN      | 0.52  | -8.77 |
| BUENAVENTURA-ADF | Peru     | USD      | 10.26 | -4.11 |
| BANCO DAVIVIENDA | Colombia | COP      | 29630 | -3.80 |
| ENGIE ENERGIA CH | Chile    | CLP      | 620   | -3.73 |
| SOUTHERN COPPER  | Peru     | USD      | 63.3  | -3.51 |

| Per Volume       | Exchange | Volume      |
|------------------|----------|-------------|
| ITAU CORPBANCA   | Chile    | 237,005,602 |
| BANCO SANTANDER  | Chile    | 203,501,500 |
| ENEL AMERICAS SA | Chile    | 79,964,305  |
| BANCO DE CHILE   | Chile    | 60,173,547  |
| ENEL CHILE SA    | Chile    | 53,816,621  |

## MILA

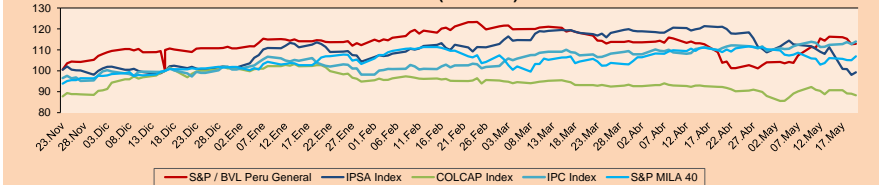
Peru: The General Index of the BVL ended today's session with a negative result of -2.07%. The index maintains an annual accumulated negative trend of -7.78% in local currency, while the adjusted return in dollars amounts to -14.06%. Then, the S&P / BVL Peru SEL varied by -2.15% while the S&P / BVL LIMA 25 by -1.78%. The PEN spot reached 5 / 3.8824. Headline: Lima Stock Exchange closed lower after final count by ONPE

Chile: The IPSA index ended the day with a positive return of +0.38%. The sectors that benefited the most from the session were Non-Basic Consumer Products (+1.84%) and Materials (+0.43%). The stocks with the best performance were Enel Américas SA (+2.65%) and Falabella SA (+2.01%). Headline: Retail sales at the beginning of June mark an increase of more than 50% on the impulse of Cyberday

Colombia: The COLCAP index closed today with a negative return of -0.74%. The sector that benefited the least from the session was Public Services (-0.76%). The worst performing stocks were Banco Davivienda (-3.80%) and Grupo Bolívar SA (-2.70%). Headline: Comptroller Issues Alerts for \$ 1 Billion in Mines and Energy

Mexico: The IPC index closed the day with a negative return of -0.24%. The sectors that benefited the least from the session were Communication Services (-1.77%) and Non-Basic Consumer Products (-1.32%). The worst performing stocks were Qualitas Controladora SAB CV (-4.40%) and Alsea SAB de CV (-3.34%) Headline: Mexico 'passes examination' by S&P, which ratifies 'BBB' rating with negative outlook

## MILA: Stock Indices (6 months)

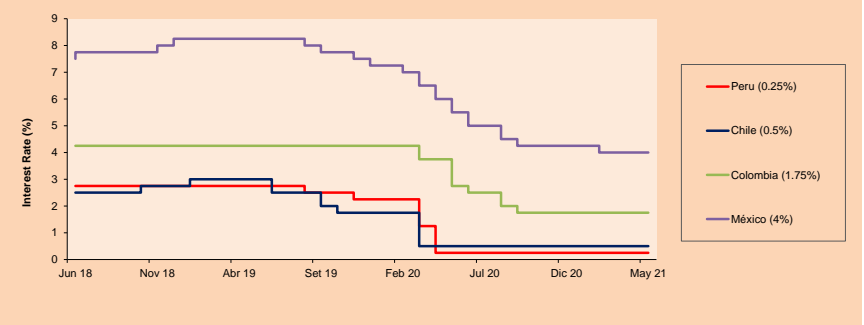


Base: 23/11/20=100  
Source: Bloomberg

## ETFs

| ETFs                                       | Curr. | Close  | 1D     | 5D     | 30 D    | YTD     | Exchange  |
|--|-------|--------|--------|--------|---------|---------|-----------|
| ▼ iShares MSCI All Peru Caped Index Fund   | USD   | 29.89  | -0.53% | -5.47% | -15.52% | -13.81% | NYSE Arca |
| ▼ iShares MSCI All Chile Caped Index Fund  | USD   | 29.53  | -1.27% | 1.55%  | -9.28%  | -2.25%  | Cboe BZX  |
| ▼ Global X MSCI Colombia                   | USD   | 10.115 | -1.51% | -2.88% | -0.83%  | -10.96% | NYSE Arca |
| ▼ iShares MSCI Mexico Capped               | USD   | 48.68  | -0.59% | -2.07% | 3.33%   | 13.24%  | NYSE Arca |
| ▼ iShares MSCI Emerging Markets            | USD   | 55.06  | -0.69% | -0.69% | 3.98%   | 6.56%   | NYSE Arca |
| ▼ Vanguard FTSE Emerging Markets           | USD   | 54.51  | -0.67% | -0.09% | 5.23%   | 8.78%   | NYSE Arca |
| ▼ iShares Core MSCI Emergoina Markets      | USD   | 66.86  | -0.68% | -0.80% | 4.14%   | 7.77%   | NYSE Arca |
| ▼ iShares JP Morgan Emerging Markets Bonds | USD   | 64.42  | -0.82% | -0.92% | 2.43%   | 5.47%   | Cboe BZX  |
| ▼ Morgan Stanley Emerging Markets Domestic | USD   | 6.23   | -0.32% | -0.80% | 1.80%   | -0.95%  | New York  |

## MILA: Policy Rate



Source: Bloomberg

Capital Market Laboratory Coordinator: Economist Bruno Bellido  
Collaboration: María Camarena, Alonso García, Adrian Paredes and Jairo Valverde  
email: pulsobursatil@ulima.edu.pe  
facebook: www.facebook.com/pulsobursatil

The content of this document is just for informational purposes. The information and opinions expressed should not be considered as recommendations for future decisions. Under any circumstances, the Capital Market Laboratory of University of Lima will be responsible for the use of the statements in this document.

## WORLD

| Main Indices                   | Close     | 1 D*   | 5 D*   | 1 M*   | YTD*   | Market Cap. (US\$ Mill.) |
|--------------------------------|-----------|--------|--------|--------|--------|--------------------------|
| ▼ Dow Jones (USA)              | 34,299.33 | -0.27% | -0.87% | -0.24% | 12.07% | 10,309,782               |
| ▼ Standard & Poor's 500 (EEUU) | 4,246.59  | -0.20% | 0.46%  | 1.74%  | 13.06% | 37,595,538               |
| ▼ NASDAQ Composite (USA)       | 14,072.86 | -0.71% | 1.06%  | 4.79%  | 9.19%  | 23,690,425               |
| ▲ Stoxx EUROPE 600 (Europe)    | 458.81    | 0.11%  | 1.06%  | 3.68%  | 14.98% | 10,412,824               |
| ▲ DAX (Germany)                | 15,729.52 | 0.36%  | 0.57%  | 2.03%  | 14.66% | 1,164,652                |
| ▲ FTSE 100 (United Kingdom)    | 7,172.48  | 0.36%  | 1.09%  | 1.83%  | 11.02% | 1,472,088                |
| ▲ CAC 40 (France)              | 6,638.52  | 0.35%  | 1.33%  | 3.98%  | 19.60% | 1,811,026                |
| ▼ IBEX 35 (Spain)              | 9,230.70  | -0.54% | 0.84%  | 0.93%  | 14.33% | 509,284                  |
| ▲ MSCI AC Asia Pacific Index   | 210.28    | 0.17%  | 0.18%  | 4.72%  | 5.18%  | 27,172,529               |
| ▼ HANG SENG (Hong Kong)        | 28,638.53 | -0.71% | -0.52% | 2.18%  | 5.17%  | 4,468,669                |
| ▼ SHANGHAI SE Comp. (China)    | 3,556.56  | -0.53% | -1.19% | 1.90%  | 2.40%  | 6,931,961                |
| ▲ NIKKEI 225 (Japan)           | 29,441.30 | 0.96%  | 1.65%  | 4.54%  | 6.98%  | 4,026,468                |
| ▲ S&P/ASX 200 (Australia)      | 7,379.47  | 0.92%  | 1.34%  | 5.37%  | 12.20% | 1,804,329                |
| ▼ KOSPI (South Korea)          | 3,258.63  | -0.24% | 0.08%  | 3.58%  | 13.66% | 1,959,556                |

\*Legend: Variation 1D: 1 Day; 5D: 5 Days; 1M: 1 Month; YTD: Var. %: 12/31/20 to date

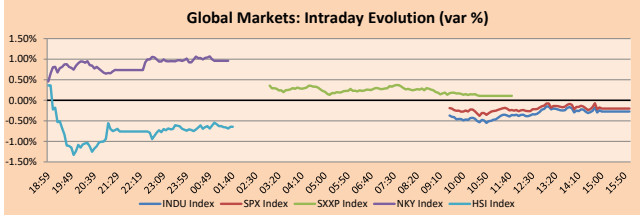
## Equity

Germany (Stocks from DAX Index)

| Largest gains | Curr. | Price  | ▲%   | Exchange | Largest losses | Curr. | Price  | ▼%    | Exchange |
|---------------|-------|--------|------|----------|----------------|-------|--------|-------|----------|
| MTX GY        | EUR   | 211.7  | 1.78 | Xetra    | DBER GY        | EUR   | 109.5  | -1.48 | Xetra    |
| DB1 GY        | EUR   | 139.35 | 1.35 | Xetra    | IFX GY         | EUR   | 33.995 | -0.64 | Xetra    |
| HEN3 GY       | EUR   | 93.72  | 0.90 | Xetra    | HEI GY         | EUR   | 74.24  | -0.59 | Xetra    |
| ENR GY        | EUR   | 25.65  | 0.87 | Xetra    | 1COV GY        | EUR   | 53.36  | -0.48 | Xetra    |

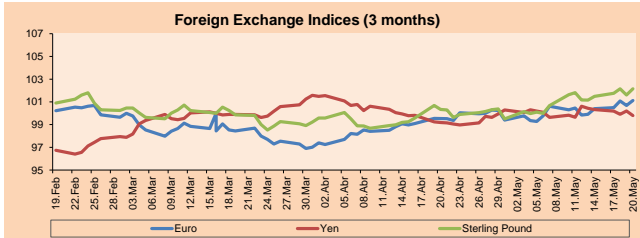
Europe (Stocks from STOXX EUROPE 600)

| Largest gains | Curr. | Price  | ▲%   | Exchange       | Largest losses | Curr. | Price  | ▼%    | Exchange     |
|---------------|-------|--------|------|----------------|----------------|-------|--------|-------|--------------|
| EPIA SS       | SEK   | 187.5  | 4.14 | Stockholm      | EVO SS         | SEK   | 1493.8 | -6.05 | Stockholm    |
| ATL IM        | EUR   | 16.295 | 3.56 | Borsa Italiana | KGH PW         | PLN   | 186.05 | -5.82 | Warsaw       |
| ABF LN        | Gbp   | 2367   | 3.27 | Londres        | MT NA          | EUR   | 25.65  | -4.74 | EN Amsterdam |
| DEMANT DC     | DKK   | 354.8  | 3.20 | Copenhagen     | BOL SS         | SEK   | 330.8  | -4.53 | Stockholm    |



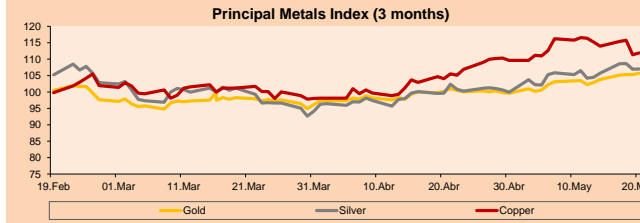
| Currency           | Price    | 1 D*   | 5 D*   | 1 M*   | YTD*   |
|--------------------|----------|--------|--------|--------|--------|
| ▲ Euro             | 1.2126   | 0.05%  | -0.39% | -0.12% | -0.74% |
| ▲ Yen              | 110.0800 | 0.01%  | 0.53%  | 0.67%  | 6.62%  |
| ▼ Sterling Pound   | 1.4083   | -0.21% | -0.52% | -0.10% | 3.02%  |
| ▲ Yuan             | 6.4061   | 0.12%  | 0.09%  | -0.49% | -1.86% |
| ▲ Hong Kong Dollar | 7.7624   | 0.01%  | 0.03%  | -0.07% | 0.12%  |
| ▼ Brazilian Real   | 5.0457   | -0.32% | 0.23%  | -4.32% | -2.94% |
| ▼ Argentine Peso   | 95.2852  | 0.03%  | 0.29%  | 1.32%  | 13.24% |

\*Legend: Variation 1D: 1 Day; 5D: 5 Days; 1M: 1 Month; YTD: Var. %: 12/31/20 to date



| Commodities                         | Close     | 1 D*   | 5 D*   | 1 M*   | YTD*   |
|-------------------------------------|-----------|--------|--------|--------|--------|
| ▼ Oro (US\$ Oz. T) (LME)            | 1,859.02  | -0.38% | -1.79% | 0.85%  | -2.07% |
| ▼ Plata (US\$ Oz. T) (LME)          | 27.66     | -0.69% | 0.17%  | 0.88%  | 4.78%  |
| ▼ Cobre (US\$ TM) (LME)             | 9,537.50  | -4.03% | -4.03% | -6.63% | 23.08% |
| ▼ Zinc (US\$ TM) (LME)              | 3,014.00  | -0.45% | 0.61%  | 3.23%  | 10.43% |
| ▲ Petróleo WTI (US\$ Barril) (NYM)  | 72.12     | 1.75%  | 2.96%  | 10.34% | 48.64% |
| ▲ Estiaino (US\$ TM) (LME)          | 33,103.00 | 0.75%  | 0.59%  | 5.76%  | 61.13% |
| ▼ Plomo (US\$ TM) (LME)             | 2,158.75  | -1.53% | -0.56% | 0.98%  | 9.26%  |
| ▲ Azúcar #11 (US\$ Libra) (NYB-ICE) | 17.20     | -1.09% | -3.10% | 0.92%  | 22.51% |
| ▼ Gasca (US\$ TM) (NYB-ICE)         | 2,428.00  | -0.78% | 0.41%  | -3.42% | -3.11% |
| ▼ Café Arábica (US\$ TM) (NYB-ICE)  | 153.25    | -1.89% | -4.13% | 4.29%  | 14.97% |

\*Legend: Variación 1D: 1 Día; 5D: 5 Días; 1M: 1 Mes; YTD: Var. %: 31/12/20 a la fecha



## Global Overview:

### United States:

Major U.S. indices closed lower today, retreating from record highs recorded earlier in the week. Investors await the conclusion of the Federal Reserve's monetary policy meeting. The central bank is not expected to make any changes, but could signal that it will begin to ease its bond-buying policy. Today, new economic data showed that producer prices rose, thanks to inflationary pressures. In addition, the underlying consumer price index and personal consumption expenditures rose to near 30-year highs in May. On the other hand, retail sales retreated, as spending rebounded toward goods services, largely due to the progress of vaccination, which allows the population to participate in other activities restricted by the pandemic. Finally, Wells Fargo Investment Institute released its mid-year outlook for 2021, saying it sees an intensified economic recovery in 2022, and ignoring inflation rates altogether. Thus, DOW JONES -0.27%; S&P 500 -0.20%; NASDAQ -0.71% ended the day with negative returns.

### Europe:

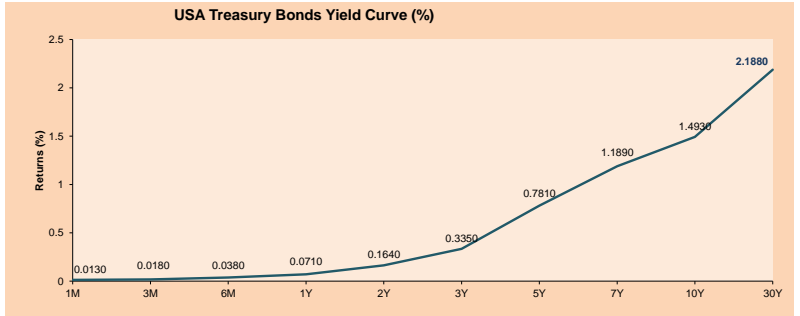
European markets ended stocks with positive results, driven by confidence in the economic recovery, however, gains were limited by waiting for the two-day policy meeting of the Federal Reserve. The pan-European STOXX600 index ended higher, due to the increase in the Non-Cyclical Consumer sectors + 0.8% and the Industrial sector + 0.48%. On the other hand, the moderate signals from the European Central Bank on the tightening of policies have boosted assets belonging to risk sectors. Likewise, there is confidence in a stable vaccination program which will promote economic recovery. On the other hand, investors are awaiting the Fed's political meeting, in which they seek to find indications about the central bank's plans in relation to reducing bond purchases and concerns about US inflation. Finally, Germany's DAX closed higher, thanks to the 0.5% increase in the CPI. Likewise, the London index ended higher, due to the increase in employment driven by the easing of COVID-19 restrictions. Thus, the STOXX 600 + 0.11%, CAC 40 + 0.35%, FTSE 100 + 0.36%, DAX + 0.36% closed with positive returns.

### Asia:

Asian mainland indices ended the day with mixed performances as investors await the U.S. Federal Reserve's monetary policy meeting. In China, tensions between Hong Kong and Western China deepened after G7 leaders signaled that Hong Kong should maintain its autonomy by rejecting the mainland's anti-human rights attitudes. On the other hand, in Japan, indices closed higher driven by the technology sector, following the strong close of the NASDAQ the previous session. Investors have regained confidence in the market as the COVID-19 vaccine launches went smoothly," said Jun Morita, head of research at Chibagin Asset Management. Finally, Australia's main index closed at record highs after the Reserve Bank of Australia Meeting announced that it would continue its bond-buying program. Thus, NIKKEI +0.96%; HANG SENG -0.71%; CSI 300 -1.11%; KOSPI +0.32%; S&P/ASX 200 -0.21%; SHANGHAI COMPOSITE -0.92% closed mixed.

## ETFs

| ETFs                         | Curr. | Close  | 1D     | 5D     | 30 D    | YTD     | Exchange  |
|------------------------------|-------|--------|--------|--------|---------|---------|-----------|
| SPDR S&P 500 ETF TRUST       | USD   | 424.48 | -0.18% | 0.52%  | 1.90%   | 13.53%  | NYSE Arca |
| ISHARES MSCI EMERGING MARKET | USD   | 55.06  | -0.69% | -0.69% | 3.98%   | 6.56%   | NYSE Arca |
| ISHARES IBOXX HIGH YLD CORP  | USD   | 87.53  | -0.01% | 0.19%  | 0.37%   | 0.26%   | NYSE Arca |
| FINANCIAL SELECT SECTOR SPDR | USD   | 37.24  | 0.19%  | -2.31% | -1.69%  | 26.32%  | NYSE Arca |
| VANECK GOLD MINERS           | USD   | 37.59  | -1.16% | -1.34% | -0.66%  | 4.36%   | NYSE Arca |
| ISHARES RUSSELL 2000 ETF     | USD   | 230.36 | -0.23% | -1.09% | 4.23%   | 17.49%  | NYSE Arca |
| SPDR GOLD SHARES             | USD   | 174.05 | -0.38% | -1.84% | 0.79%   | -2.42%  | NYSE Arca |
| ISHARES 20+ YEAR TREASURY BO | USD   | 141.05 | -0.12% | 0.43%  | 2.90%   | -10.58% | NASDAQ GM |
| INVESCO QQQ TRUST SERIES 1   | USD   | 342.26 | -0.65% | 1.63%  | 4.86%   | 9.09%   | NASDAQ GM |
| ISHARES NASDAQ BIOTECHNOLOGY | USD   | 159.44 | -1.48% | 0.86%  | 6.52%   | 5.25%   | NASDAQ GM |
| ENERGY SELECT SECTOR SPDR    | USD   | 56.19  | 1.90%  | 0.36%  | 5.05%   | 48.26%  | NYSE Arca |
| PROSHARES ULTRA VIX ST FUTUR | USD   | 31.50  | 3.35%  | -8.47% | -25.58% | -70.42% | Close BZX |
| UNITED STATES OIL FUND LP    | USD   | 48.98  | 1.37%  | 2.39%  | 9.55%   | 48.38%  | NYSE Arca |
| ISHARES MSCI BRAZIL ETF      | USD   | 40.99  | 0.37%  | -1.56% | 9.34%   | 10.57%  | NYSE Arca |
| SPDR S&P OIL & GAS EXP & PR  | USD   | 97.97  | 1.74%  | -0.34% | 13.44%  | 67.47%  | NYSE Arca |
| UTILITIES SELECT SECTOR SPDR | USD   | 66.45  | 0.30%  | 2.31%  | 0.82%   | 5.98%   | NYSE Arca |
| ISHARES US REAL ESTATE ETF   | USD   | 103.81 | -1.05% | -0.64% | 6.66%   | 21.20%  | NYSE Arca |
| SPDR S&P BIOTECH ETF         | USD   | 133.43 | -2.38% | -0.02% | 5.13%   | -5.22%  | NYSE Arca |
| ISHARES IBOXX INVESTMENT GRA | USD   | 133.28 | 0.08%  | 0.60%  | 1.70%   | -3.51%  | NYSE Arca |
| REAL ESTATE SELECT SECT SPDR | USD   | 112.47 | 0.22%  | 0.24%  | 1.11%   | -2.97%  | NASDAQ GM |
| ISHARES CHINA LARGE-CAP ETF  | USD   | 45.28  | -0.92% | 0.13%  | 7.94%   | 23.85%  | NYSE Arca |
| ISHARES CHINA LARGE-CAP ETF  | USD   | 45.58  | -1.36% | -1.09% | 3.10%   | -1.83%  | NYSE Arca |
| CONSUMER STAPLES SPDR        | USD   | 70.73  | -0.24% | -0.10% | -0.25%  | 4.86%   | NYSE Arca |
| VANECK JR GOLD MINERS        | USD   | 52.28  | -1.34% | -1.00% | 2.29%   | -3.61%  | NYSE Arca |
| SPDR BBO HIGH YIELD BND      | USD   | 109.43 | 0.02%  | 0.29%  | 0.56%   | 0.45%   | NYSE Arca |
| VANGUARD REAL ESTATE ETF     | USD   | 104.36 | -1.07% | -0.24% | 7.50%   | 22.89%  | NYSE Arca |
| GRAYSCALE BITCOIN TRUST BTC  | USD   | 33.23  | 0.46%  | 21.07% | -15.72% | 3.85%   | OTC US    |



Capital Market Laboratory Coordinator: Economist Bruno Bellido  
Collaboration: Maria Camarena, Alonso García, Adrian Paredes and Jairo Valverde  
email: pulsobursatil@ulima.edu.pe  
facebook: www.facebook.com/pulsobursatil.u

LIMA

Stocks

| Ticker           | Currency | Price  | 1D*    | 5D*     | 30D*    | YTD*    | Frequency | Volume (US\$) | Beta | Dividend Yield (%) | Price Earning | Market Cap. (M US\$) | Economic Sector* | Index Weight |
|------------------|----------|--------|--------|---------|---------|---------|-----------|---------------|------|--------------------|---------------|----------------------|------------------|--------------|
| ▼ ALICORC1 PE**  | S/.      | 6.45   | -0.79% | -1.06%  | -2.36%  | -8.11%  | 100.00%   | 608,333       | 1.01 | 3.88               | 12.17         | 1,417.09             | Industrial       | 3.53%        |
| ▼ ATACOCB1 PE**  | S/.      | 0.10   | 0.00%  | -13.04% | -27.54% | -27.54% | 70.00%    | 477           | 1.19 | 0.00               | -             | 24.34                | Mining           | 1.02%        |
| ▼ BACKUS1 PE**   | S/.      | 17.30  | -3.35% | -3.94%  | -14.86% | -14.14% | 100.00%   | 7,685         | 0.73 | 7.43               | 8.35          | 7,300.73             | Industrial       | 0.82%        |
| ▼ BAP PE**       | US\$     | 120.66 | -1.33% | -9.79%  | -17.36% | -24.87% | 100.00%   | 362,064       | 1.15 | 0.00               | -             | 11,388.17            | Diverse          | 5.82%        |
| ▼ BVN PE**       | US\$     | 10.26  | -4.11% | -6.47%  | -12.23% | -14.50% | 100.00%   | 67,800        | 1.10 | 0.00               | -             | 2,823.16             | Mining           | 5.88%        |
| ▼ CASAGRC1 PE**  | S/.      | 3.81   | -3.54% | -2.31%  | -38.45% | -19.79% | 90.00%    | 39,252        | 1.27 | 19.63              | 2.81          | 82.66                | Agricultural     | 1.31%        |
| ▼ BBVAC1 PE**    | S/.      | 1.96   | -1.01% | 0.00%   | -12.11% | -9.68%  | 85.00%    | 166,398       | 1.10 | 2.30               | 27.99         | 3,296.20             | Finance          | 2.85%        |
| ▼ CORAREH1 PE**  | S/.      | 0.90   | -8.16% | -3.23%  | -26.83% | 1.12%   | 100.00%   | 28,255        | 1.33 | 22.60              | 2.88          | 374.65               | Industrial       | 1.72%        |
| ▲ CPACASC1 PE**  | S/.      | 6.15   | 1.99%  | 8.66%   | 5.13%   | 16.04%  | 100.00%   | 585,203       | 0.73 | 3.74               | 43.93         | 728.50               | Industrial       | 2.38%        |
| ▼ CVERDEC1 PE**  | US\$     | 15.99  | -0.68% | -8.10%  | -33.38% | -23.57% | 100.00%   | 383,687       | 1.47 | 3.57               | 9.16          | 5,597.40             | Mining           | 5.25%        |
| ▼ ENGPEEC1 PE**  | S/.      | 2.02   | -0.49% | 1.51%   | -15.13% | 1.00%   | 95.00%    | 27,219        | 0.69 | 9.77               | 12.35         | 1,476.99             | Public Services  | 1.44%        |
| ▼ ENDISPC1**     | S/.      | 4.07   | -1.93% | -1.93%  | -21.73% | -24.63% | 75.00%    | 2,902         | 0.77 | 4.19               | 9.16          | 669.42               | Public Services  | 0.98%        |
| ▼ FERREYC1 PE**  | S/.      | 1.50   | -1.32% | 1.35%   | -24.62% | -13.79% | 100.00%   | 57,941        | 1.11 | 12.14              | 6.63          | 376.96               | Diverse          | 4.90%        |
| ▲ AENZAC1 PE**   | S/.      | 1.17   | 9.35%  | -2.50%  | -11.36% | -32.76% | 100.00%   | 246,462       | 0.83 | 0.00               | -             | 262.76               | Diverse          | 4.05%        |
| ▼ IFS PE**       | US\$     | 25.55  | -0.58% | -4.59%  | -14.83% | -17.42% | 95.00%    | 1,183,582     | 1.21 | 3.01               | 14.94         | 2,949.69             | Diverse          | 7.22%        |
| ▼ INRETC1 PE**   | US\$     | 35.00  | -0.82% | -0.85%  | -14.63% | -10.71% | 100.00%   | 689,894       | 0.82 | 1.95               | 74.42         | 3,598.26             | Diverse          | 5.28%        |
| - LUSURC1 PE**   | S/.      | 11.71  | 0.00%  | -1.60%  | -6.32%  | -54.09% | 70.00%    | 75            | 0.73 | 0.00               | 12.69         | 1,468.73             | Public Services  | 1.81%        |
| - MINSUR1 PE**   | S/.      | 2.62   | -0.76% | 0.00%   | -18.63% | 41.62%  | 100.00%   | 49,760        | 0.97 | 12.75              | 5.14          | 1,945.57             | Mining           | 3.09%        |
| ▼ PML PE**       | US\$     | 0.10   | -5.00% | -9.52%  | -29.63% | -10.38% | 75.00%    | 20,522        | 1.42 | 0.00               | -             | 25.12                | Mining           | 2.12%        |
| - RELAPAC1 PE**  | S/.      | 0.13   | 0.00%  | 10.62%  | -1.57%  | 81.16%  | 95.00%    | 47,890        | 1.15 | 0.00               | 3.27          | 267.85               | Industrial       | 2.12%        |
| - SCCO PE**      | US\$     | 63.30  | -3.51% | -7.99%  | -16.16% | -3.95%  | 100.00%   | 274,147       | 0.95 | 3.48               | 21.99         | 48,935.54            | Mining           | 2.14%        |
| - SIDERC1 PE**   | S/.      | 0.97   | 0.00%  | 4.30%   | -11.01% | 14.12%  | 100.00%   | 3,748         | 0.93 | 0.00               | 4.85          | 221.84               | Industrial       | 1.43%        |
| ▼ TV PE**        | US\$     | 0.18   | -4.21% | -8.08%  | -8.08%  | 23.81%  | 100.00%   | 80,011        | 1.22 | 0.00               | -             | 180.01               | Mining           | 2.93%        |
| ▼ UNACEMC1 PE**  | S/.      | 1.28   | -0.78% | -7.91%  | -20.00% | -17.42% | 95.00%    | 52,074        | 1.17 | 2.03               | 10.11         | 599.42               | Industrial       | 3.00%        |
| ▼ VOLGABC1 PE**  | S/.      | 0.52   | -8.77% | -13.33% | -30.67% | 0.00%   | 100.00%   | 325,213       | 1.56 | 0.00               | -             | 546.01               | Mining           | 5.90%        |
| - NEXAPEEC1 PE** | S/.      | 3.30   | 0.00%  | 1.23%   | -7.04%  | 16.61%  | 65.00%    | 17,272        | 1.12 | 0.00               | 25.41         | 1,123.26             | Mining           | 1.56%        |

Quantity of shares: 26  
Source: Bloomberg, Economática  
\* Bloomberg Industry Classification System  
\*\* PER is used in the stock market and original currency of the instrument  
\*Legend: Variation 1D: 1 Day; 5D: 5 Days, 1M: 1 Month; YTD: Var.% 12/31/20 to date

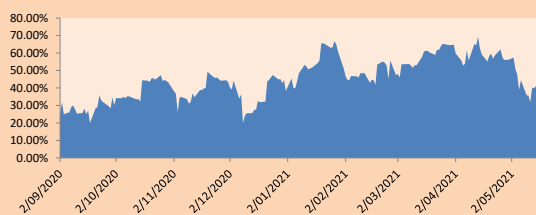
Sectorial Indices

|                       | Close    | 1D*    | 5D*     | 30D*    | YTD*    | Beta |
|-----------------------|----------|--------|---------|---------|---------|------|
| ▼ S&P/BVLMining       | 398.51   | -3.88% | -8.38%  | -11.98% | 2.20%   | 1.16 |
| ▼ S&P/BVLCConsumer    | 1,034.18 | -1.35% | 2.50%   | -11.69% | -5.00%  | 0.59 |
| ▲ S&P/BVLIndustrials  | 177.56   | 0.88%  | 0.20%   | -13.20% | -6.82%  | 0.63 |
| ▼ S&P/BVLFinancials   | 848.66   | -1.55% | -10.00% | -12.41% | -17.92% | 1.22 |
| ▲ S&P/BVLConstruction | 194.72   | 1.74%  | -0.41%  | -8.30%  | -6.89%  | 0.63 |
| ▼ S&P/BVLPublicSvcs   | 529.15   | -0.23% | -0.64%  | -12.23% | -13.83% | 0.44 |
| ▼ S&P/BVLElectricUtil | 516.58   | -0.23% | -0.64%  | -12.23% | -13.83% | 0.44 |

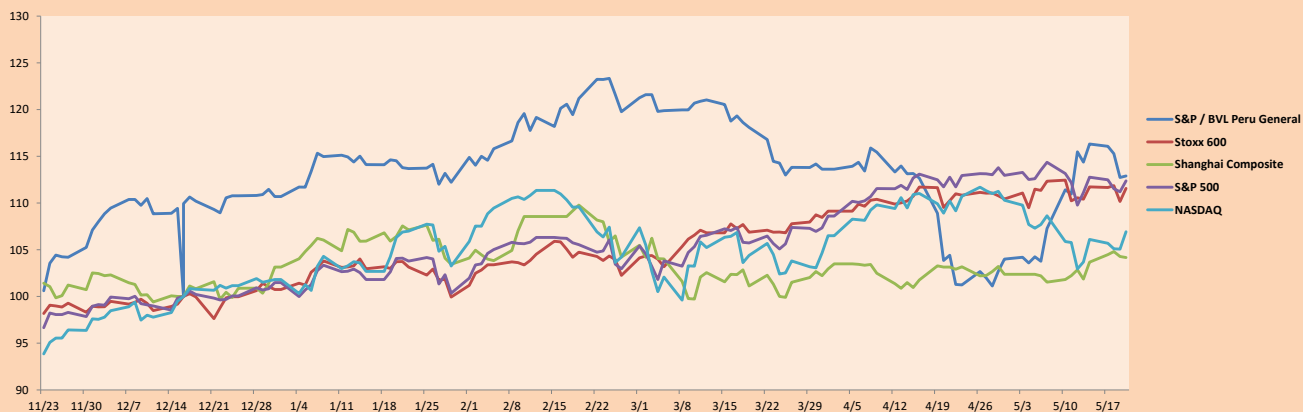
S&P/BVLConstructionTRPEN

\*Legend: Variation 1D: 1 Day; 5D: 5 Days, 1M: 1 Month; YTD: Var.% 12/31/20 to date

Correlation Graph of Returns of Mining Index against Metallic Index of London (3 months)



Indices (6 months)



Base: 16/12/20=100  
Source: Bloomberg

Capital Market Laboratory Coordinator: Economist Bruno Bellido  
Collaboration: María Camarena, Alonso García, Adrian Paredes and Jairo Valverde  
email: pulsobursatil@ulima.edu.pe  
facebook: www.facebook.com/pulsobursatil

## SOVEREIGN RATING

### RISK RATINGS

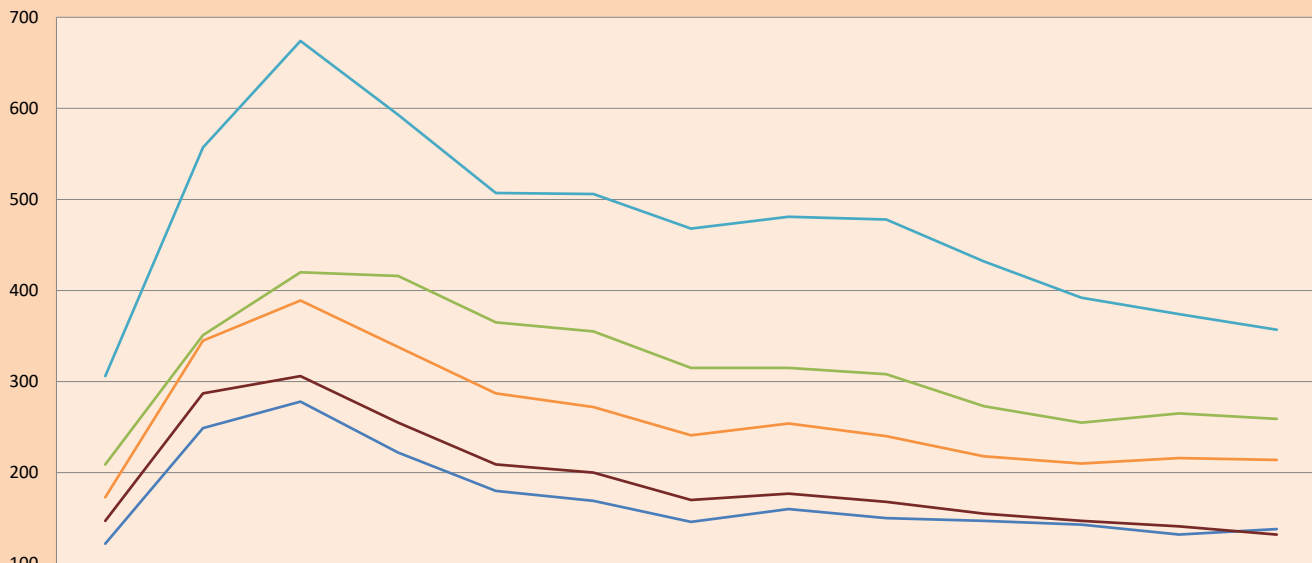
| Moody's | S&P  | Fitch |  |
|---------|------|-------|--|
| Aaa     | AAA  | AAA   | Prime  |
| Aa1     | AA+  | AA+   | High credit quality  |
| Aa2     | AA   | AA    |  |
| Aa3     | AA-  | AA-   |  |
| A1      | A+   | A+    | Medium-high grade, with low credit risk                                  |
| A2      | A    | A     |  |
| A3      | A-   | A-    |  |
| Baa1    | BBB+ | BBB+  | Moderate Credit Risk   |
| Baa2    | BBB  | BBB   |  |
| Baa3    | BBB- | BBB-  |  |
| Ba1     | BB+  | BB+   | It has speculative elements and it is subject to substantial credit risk |
| Ba2     | BB   | BB    |  |
| Ba3     | BB-  | BB-   |  |
| B1      | B+   | B+    | It is considered speculative and it has high credit risk                 |
| B2      | B    | B     |  |
| B3      | B-   | B-    |  |
| Caa1    | CCC+ | CCC   | Bad credit conditions and it is subject to high credit risk              |
| Caa2    | CCC  |       |  |
| Caa3    | CCC- |       |  |
| Ca      | C    | DDD   | Very close to default or in default                                      |
| C       | D    |       |  |
|         |      |       |  |

Source: Bloomberg

| Latin America Credit Rating |         |       |      |
|-----------------------------|---------|-------|------|
| Clasificadora de riesgo     |         |       |      |
| Country                     | Moody's | Fitch | S&P  |
| Peru                        | A3      | BBB+  | BBB+ |
| México                      | Ba2     | BB-   | BB-  |
| Venezuela                   | C       | WD    | SD   |
| Brazil                      | Ba2     | BB-   | BB-  |
| Colombia                    | Baa2    | BBB-  | BB+  |
| Chile                       | A1      | A-    | A    |
| Argentine                   | Ca      | WD    | CCC+ |
| Panama                      | Baa2    | BBB-  | BBB  |

Source: Bloomberg

### LATAM Country Risk (bps)



|          | Feb-20 | Mar-20 | Abr-20 | May-20 | Jun-20 | Jul-20 | Ago-20 | Set-20 | Oct-20 | Nov-20 | Dic-20 | Ene-21 | Feb-21 |
|----------|--------|--------|--------|--------|--------|--------|--------|--------|--------|--------|--------|--------|--------|
| Perú     | 122    | 249    | 278    | 222    | 180    | 169    | 146    | 160    | 150    | 147    | 143    | 132    | 138    |
| Brasil   | 209    | 351    | 420    | 416    | 365    | 355    | 315    | 315    | 308    | 273    | 255    | 265    | 259    |
| México   | 306    | 557    | 674    | 593    | 507    | 506    | 468    | 481    | 478    | 432    | 392    | 374    | 357    |
| Colombia | 173    | 345    | 389    | 338    | 287    | 272    | 241    | 254    | 240    | 218    | 210    | 216    | 214    |
| Chile    | 147    | 287    | 306    | 255    | 209    | 200    | 170    | 177    | 168    | 155    | 147    | 141    | 132    |

Source: BCRP

Capital Market Laboratory Coordinator: Economist Bruno Bellido  
Collaboration: María Camarena, Alonso García, Nicolás Muñoz, Adrián Paredes y Jairo Valverde  
email: [pulsobursatil@ulima.edu.pe](mailto:pulsobursatil@ulima.edu.pe)  
facebook: [www.facebook.com/pulsobursatil.ul](https://www.facebook.com/pulsobursatil.ul)