

PULSO BURSÁTIL

FACULTAD DE CIENCIAS EMPRESARIALES Y ECONÓMICAS
CARRERA DE ECONOMÍA
LABORATORIO DE MERCADO DE CAPITALES

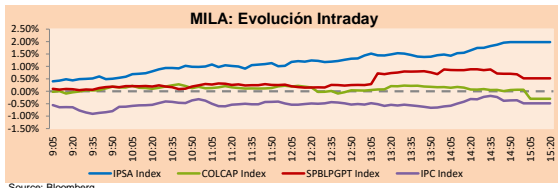


MILA

Lima, June 22, 2021

Main Indexes	Close	1 D	5 D	1 M	YTD	Cap. Burs. (US\$ bill)
▲ IPSA (Chile)	4,371.93	1.81%	0.62%	7.16%	4.66%	118.15
▲ IGPA (Chile)	21,931.46	1.71%	0.47%	6.49%	4.40%	142.95
▼ COLCAP (Colombia)	966.75	0.00%	-0.65%	-0.92%	-8.71%	4.40
▼ COLCAP (Colombia)	1,242.70	-0.30%	-0.76%	-0.11%	-13.57%	73.93
▲ S&P/BVL (Perú)*	18,724.92	0.52%	-2.49%	-8.98%	-10.07%	88.06
▲ S&P/BVL SEL (Perú)	497.32	0.42%	-1.65%	-8.38%	-9.81%	79.84
▼ S&P/BVL LIMA 25	23,909.01	-0.21%	-2.64%	-10.11%	-5.12%	87.29
▼ IPC (México)	50,129.88	-0.37%	-1.53%	0.71%	13.76%	300.86
▲ S&P MILA 40	475.77	1.06%	-2.73%	-2.24%	-11.01%	6,124.72

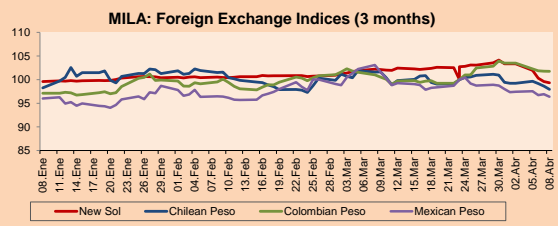
*Legend: Variation 1D: 1 day; 5D: 5 days; 1M: 1 Month; YTD: Var% 12/31/20 to date



Source: Bloomberg

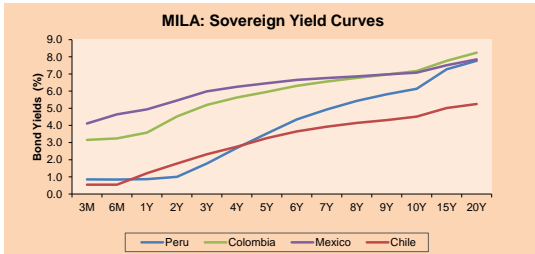
Currency	Price	1D*	5D*	30 D*	YTD*
▲ Sol (PEN)	3,9794	0.67%	2.50%	6.02%	9.99%
▼ Chilean Peso (CLP)	742.30	-0.82%	2.14%	3.32%	4.29%
▲ Colombian Peso (COP)	3,782.27	0.62%	3.23%	0.96%	10.28%
▼ Mexican Peso (MXN)	20.36	-0.65%	1.66%	2.02%	2.22%

*Legend: Variation 1D: 1 day; 5D: 5 days; 1M: 1 Month; YTD: Var% 12/31/20 to date



Base: 23/03/21=100
Source: Bloomberg

Fixed Income	Currency	Price	Bid Yield (%)	Ask Yield (%)	Duration
PERU 7.35 07/21/25	USD	122.892	1.59	1.47	3.55
PERU 4.125 08/25/27	USD	111.578	2.15	2.07	5.49
PERU 8.75 11/21/33	USD	156.18	3.26	3.18	8.72
PERU 6.55 03/14/37	USD	136.742	3.52	3.46	10.32
PERU 5.625 11/18/2050	USD	134.917	3.69	3.66	16.57
CHILE 2.25 10/30/22	USD	102.456	0.58	0.27	1.33
CHILE 3.125 01/21/26	USD	108.234	1.32	1.21	4.27
CHILE 3.625 10/30/42	USD	105.642	3.28	3.24	15.32
COLOM 11.85 03/09/28	USD	157.493	2.64	2.34	5.10
COLOM 10.375 01/28/33	USD	149.206	4.90	4.69	7.56
COLOM 7.375 09/18/37	USD	130.523	4.71	4.64	10.34
COLOM 6.125 01/18/41	USD	117.76	4.75	4.69	11.99
MEX 4 10/02/23	USD	117.76	4.754	4.694	11.99
MEX5.55 01/45	USD	121.252	4.15	4.11	14.08



Source: Bloomberg

Equity

Largest gains	Exchange	Currency	Price	▲%
CAP	Chile	CLP	12855.00	6.41
SOQUIMICH-B	Chile	CLP	33574.00	4.88
PARQUE ARAUCO	Chile	CLP	998.00	3.95
GRUPO MEXICO-B	Mexico	MXN	90.92	3.38
SONDA SA	Chile	CLP	429.36	2.44

Per Turnover	Exchange	Amount (US\$)
CERVEZAS	Chile	149,365,620
GRUPO F BANORT-O	Mexico	38,674,616
GRUPO MEXICO-B	Mexico	33,989,797
WALMART DE MEXIC	Mexico	25,784,332
SOQUIMICH-B	Chile	18,902,479

Largest losses	Exchange	Currency	Price	▼%
AERO DEL SURES-B	Mexico	MXN	362.82	-4.50
AERO DEL PACIF-B	Mexico	MXN	217.19	-3.47
GRUPO CARSO-A1	Mexico	MXN	62.8	-3.34
ENEL CHILE SA	Chile	CLP	42.01	-2.96
GRUMA SAB-B	Mexico	MXN	221.96	-1.75

Per Volume	Exchange	Volume
ITAU CORPBANCA	Chile	198,462,611
BANCO SANTANDER	Chile	186,857,813
BANCO DE CHILE	Chile	133,820,756
ENEL AMERICAS SA	Chile	127,062,796
ENEL CHILE SA	Chile	75,573,350

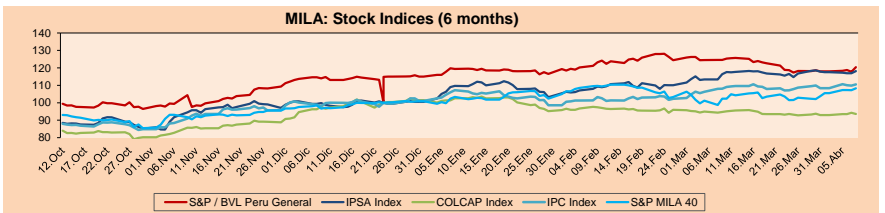
MILA

Peru: The General Index of the BVL ended today's session with a positive result of +0.52%. The index maintains an annual accumulated negative trend of -10.07% in local currency, while the adjusted return in dollars amounts to -18.24%. Then, the S&P / BVL Peru SEL varied by +0.42% while the S&P / BVL LIMA 25 by -0.21%. The PEN spot reached 5 / 3.9784. Headline: Exchange rate closes at 5 / 3.98 despite the fact that the BCR sold US \$ 150 million in the market

Chile: The IPSA index ended the day with a positive return of +1.81%. The sectors that benefited the most from the conference were Materials (+4.23%) and Energy (+2.86%). The worst performing stocks were CAP SA (+6.41%) and Sociedad Química y Minera Chile (+4.88%). Headline: Waterfalls soar in the stock market after announcing that they will evaluate financing

Colombia: The COLCAP index closed today with a negative return of -0.30%. The sectors that benefited the least from the session were First Needs Products (-1.60%) and Finance (-1.20%). The worst performing stocks were Grupo de Inversión Suramericana (-2.08%) and Celsia SA (-1.76%). Headline: In April the trade balance deficit reached US \$ 1,487 million

Mexico: The IPC index closed the day with a negative return of -0.37%. The least benefited sectors of the day were Industrial (-2.65%) and Communication Services (-0.64%). The worst performing stocks were Grupo Aeroport. del Sureste-B (-4.50%) and Grupo Carso SAB de CV (-3.34%) Headline: Yields of Cetes and M Bonds register increases prior to the Banxico announcement and inflation data

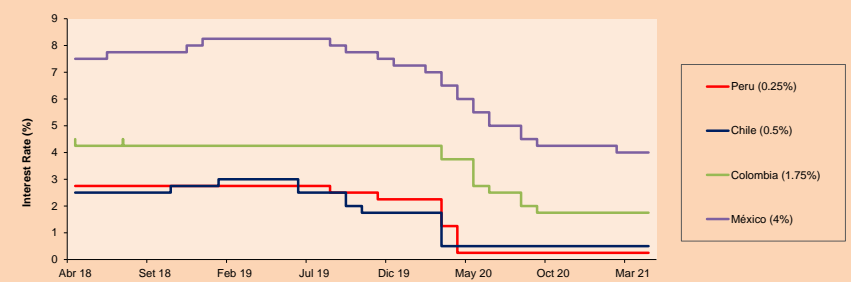


Base: 12/10/20=100
Source: Bloomberg

ETFs

ETFs	Curr.	Close	1D	5D	30 D	YTD	Exchange
▲ iShares MSCI All Peru Caped Index Fund	USD	28.0308	0.18%	-6.22%	-13.96%	-19.17%	NYSE Arca
▲ iShares MSCI All Chile Caped Index Fund	USD	28.79	1.98%	-2.51%	1.44%	-4.70%	Cboe BZX
▼ Global X MSCI Colombia	USD	9.84	-0.71%	-2.72%	0.28%	-13.38%	NYSE Arca
▲ iShares MSCI Mexico Capped	USD	47.13	-0.06%	-3.18%	-1.36%	9.63%	NYSE Arca
▼ iShares MSCI Emerging Markets	USD	54.21	-0.46%	-1.54%	2.01%	4.92%	NYSE Arca
▼ Vanguard FTSE Emerging Markets	USD	53.41	-0.43%	-2.02%	2.57%	6.59%	NYSE Arca
▼ iShares Core MSCI Emergina Markets	USD	65.92	-0.38%	-1.41%	2.23%	6.25%	NYSE Arca
▼ iShares JP Morgan Emerging Markets Bonds	USD	63.58	-0.49%	-1.30%	0.49%	4.09%	Cboe BZX
- Morgan Stanley Emerging Markets Domestic	USD	6.14	0.00%	-1.44%	0.66%	-2.38%	New York

MILA: Policy Rate



Source: Bloomberg

Capital Market Laboratory Coordinator: Economist Bruno Bellido
Collaboration: María Camarena, Alonso García, Nicolás Muñoz, Adrian Paredes y Jairo Valverde
email: pulsobursatil@ulima.edu.pe
facebook: www.facebook.com/pulsobursatil

The content of this document is just for informational purposes. The information and opinions expressed should not be consider as recommendations for future decisions. Under any circumstances, the Capital Market Laboratory of University of Lima will be responsible for the use of the statements in this document.

WORLD

Main Indices	Close	1 D*	5 D*	1 M*	YTD*	Market Cap. (US\$ Mill.)
▲ Dow Jones (USA)	33,945.58	0.20%	-1.03%	-0.77%	10.91%	10,254,456
▲ Standard & Poor's 500 (EUEU)	4,246.44	0.51%	0.00%	2.18%	13.06%	37,327,863
▲ NASDAQ Composite (USA)	14,253.27	0.79%	1.28%	5.81%	10.59%	23,651,760
▲ Stoxx EURO600 (Europe)	456.42	0.26%	-0.52%	2.70%	14.38%	10,629,116
▲ DAX (Germany)	15,636.33	0.21%	-0.59%	1.29%	13.98%	1,175,518
▲ FTSE 100 (United Kingdom)	7,090.01	0.39%	-1.15%	1.03%	9.74%	1,470,642
▲ CAC 40 (France)	6,811.50	0.14%	-0.42%	3.52%	19.10%	1,833,001
▲ IBEX 35 (Spain)	9,053.30	0.02%	-1.92%	-1.64%	12.13%	507,886
▲ MSCI AC Asia Pacific Index	205.97	0.79%	-2.05%	0.91%	3.03%	26,660,475
▼ HANG SENG (Hong Kong)	28,309.76	-0.63%	-1.15%	-0.52%	3.96%	4,341,388
▲ SHANGHAI SE Comp. (China)	3,557.41	0.80%	0.02%	2.03%	2.43%	6,863,494
▲ NIKKEI 225 (Japan)	28,884.13	3.12%	-1.89%	2.00%	5.25%	3,954,455
▲ S&P / ASX 200 (Australia)	7,342.20	1.48%	-0.51%	4.44%	11.46%	1,771,552
▼ KOSPI (South Korea)	3,263.88	-0.37%	-1.53%	3.40%	13.59%	1,939,263

*Legend: Variation 1D: 1 Day; 5D: 5 Days; 1M: 1 Month; YTD: Var. % 12/31/20 to date

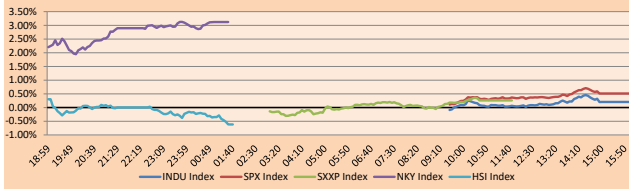
Equity

Germany (Stocks from DAX Index)					
Largest gains	Curr.	Price	▲%	Exchange	
MRK GY	EUR	157	2.18	Xetra	
VNA GY	EUR	54.72	1.52	Xetra	
LIN GY	EUR	244.7	1.14	Xetra	
IFX GY	EUR	32,955	0.98	Xetra	

Europe (Stocks from STOXX EUROPE 600)					
Largest gains	Curr.	Price	▲%	Exchange	
TPK LN	Gbp	1725	6.71	Londres	
BEZ LN	Gbp	340.9	6.17	Londres	
BLND LN	Gbp	516.8	4.72	Londres	
1COV GY	EUR	55.62	4.59	Xetra	

Largest losses					
	Curr.	Price	▼%	Exchange	
VOW3 GY	EUR	223.4	-1.43	Xetra	
ENR GY	EUR	25.17	-1.02	Xetra	
DBK GY	EUR	10.916	-0.87	Xetra	
ALV GY	EUR	215.7	-0.69	Xetra	

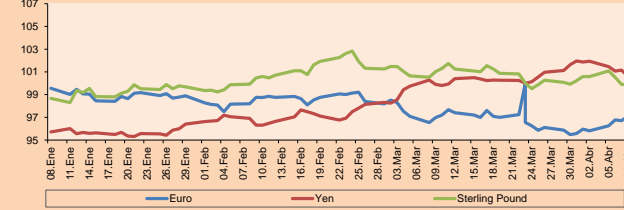
Global Markets: Intraday Evolution (var %)



Currency	Price	1 D*	5 D*	1 M*	YTD*
▲ Euro	1,1940	0.18%	-1.53%	-1.99%	-2.26%
▲ Yen	110,6500	0.34%	0.52%	1.55%	7.17%
▲ Sterling Pound	1,3949	0.11%	-0.96%	-1.42%	2.94%
▲ Yuan	6,4811	0.22%	1.17%	0.73%	-0.71%
▲ Hong Kong Dollar	7,7668	0.02%	0.06%	0.03%	0.18%
▼ Brazilian Real	4,9596	-1.11%	-1.71%	-7.59%	-4.60%
▼ Argentine Peso	95,4925	0.12%	0.22%	1.29%	13.48%

*Legend: Variation 1D: 1 Day; 5D: 5 Days; 1M: 1 Month; YTD: Var. % 12/31/20 to date

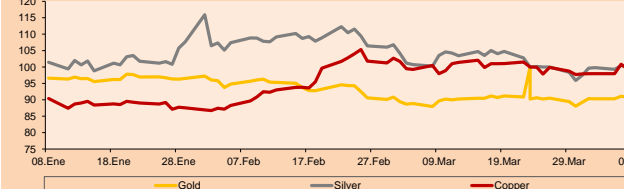
Foreign Exchange Indices (3 months)



Commodities	Close	1 D*	5 D*	1 M*	YTD*
▼ Oro (US\$ Oz. T) (LME)	1,778.74	-0.25%	-4.32%	-5.45%	-6.30%
▼ Plata (US\$ Oz. T) (LME)	25.78	-0.67%	-6.82%	-6.48%	-2.37%
▲ Cobre (US\$ TM) (LME)	9,274.60	1.32%	-2.78%	-6.01%	19.69%
▲ Zinc (US\$ TM) (LME)	2,848.75	0.90%	-5.48%	-3.71%	4.38%
▼ Petróleo WTI (US\$ Barril) (NYM)	72.85	-0.37%	1.38%	14.98%	50.61%
▼ Estano (US\$ TM) (LME)	32,184.00	1.45%	-2.78%	-0.41%	56.06%
▼ Plomo (US\$ TM) (LME)	2,164.53	0.76%	0.27%	-1.32%	9.55%
▲ Azúcar #11 (US\$ Libra) (NYB-ICE)	16.74	-1.93%	-2.67%	-0.59%	19.23%
▲ Cacah (US\$ TM) (NYB-ICE)	2,396.00	0.76%	-1.32%	-4.12%	-4.39%
▼ Café Arábica (US\$ TM) (NYB-ICE)	152.10	-1.27%	-0.75%	0.00%	14.10%

*Legend: Variación 1D: 1 Día; 5D: 5 Días; 1M: 1 Mes; YTD: Var. % 31/12/20 a la fecha

Principal Metals Index (3 months)



Global Overview:

United States:

The main US indices closed the day in positive territory for the second consecutive day, thanks to the Fed Chairman's remarks. Stocks have found some balance in the days following the FED's monetary policy decision and post-meeting messages. Jerome Powell, chairman of the FED, testified before the House of Representatives, reiterating that inflationary pressures are temporary. "We will not raise interest rates preemptively because we have the potential emergence of inflation. Let's wait for evidence of actual inflation or other imbalances" concluded Powell. Major U.S. indexes closed higher, highlighted by the NASDAQ, which rose to a record high as technology stocks benefited from investors' focus on growth stocks. On the other hand, home sales fell for the fourth consecutive month in May after prices reached a new high. This trend could persist for a while, due to the cost of building materials. Among the outstanding stocks we have Microsoft +1.20%, after taking its market capitalization to USD 2 trillion. At the same time, the price of Bitcoin stabilized after it traded back above \$32000. Thus, DOW JONES +0.20%; S&P 500 +0.51%; NASDAQ +0.79% ended the day with positive returns.

Europe:

European markets ended stocks with positive results, driven by the rise in mining and energy stocks benefiting from stable commodity prices. On the other hand, investors are concerned about the speech given by Jerome Powell, chairman of the Federal Reserve. The pan-European STOXX600 index ended higher, due to growth in the mining sector +1.3% driven by the recovery in the price of metals. Likewise, the ECB's volatility index fell to 17.7, easing the tension among investors. On the other hand, the British FTSE100 index ended higher, thanks to the growth in the Real Estate sectors +2.34% and Health +2.17%, also the travel sector rose by 0.5%, after the British Secretary of Health said that it was continues to work to reduce travel restrictions. Finally, among the highlights of the day, Kingspan Group rose 6.96% after forecasting big sales for the second quarter of 2021. On the other hand, Sanofi fell 0.6% despite its start in the Phase I clinical trial for a seasonal flu vaccine. Thus, the STOXX 600 +0.26%, CAC 40 +0.14%, FTSE 100 +0.39%, DAX +0.21% closed with positive returns.

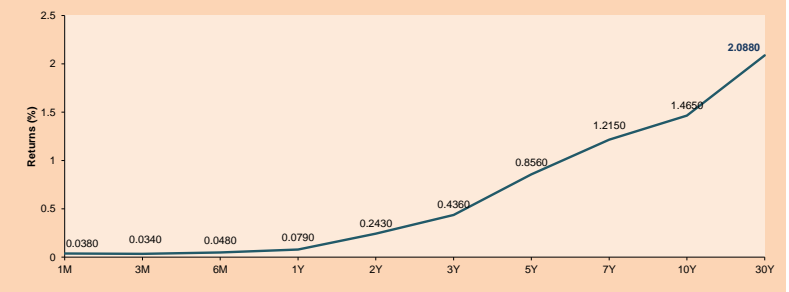
Asia:

Asian mainland indexes ended trading mostly higher as investors remained expectant of Fed chief Jerome Powell's remarks. On the other hand, China's central bank said on Monday that it had recently summoned some bank and payment companies, including China Construction Bank and Alipay, urging them to take action against cryptocurrency trading. Thus, Hong Kong closed lower due to weakness in technology stocks mainly in blockchain-related assets. Contrarily, the Shanghai Composite ended with gains after Beijing's reform measures to the way banks calculate deposit rates boosted the financial sector +0.58% and oil's rise did the same for the energy sector +2.93%. Similarly, Japan's NIKKEI attributed its gains to the transportation sector after Mitsui OSK closed 10.2% higher to reach a decade high after tripling its annual revenue forecast. Finally, the S&P/ASX 200 closed higher driven by the Energy +2.24% and Financials +2.01% sectors. Thus, NIKKEI +3.16%; HANG SENG -0.63%; CSI 300 +0.62%; SHANGHAI COMPOSITE +0.80%; KOSPI 0.71%; S&P/ASX 200 +1.48% closed mostly higher.

ETFs

ETFs	Curr.	Close	1D	5D	30 D	YTD	Exchange
SPDR S&P 500 ETF TRUST	USD	423.11	-0.53%	-0.32%	1.97%	13.17%	NYSE Arca
ISHARES MSCI EMERGING MARKET	USD	54.21	-0.46%	-1.54%	2.01%	4.92%	NYSE Arca
ISHARES IBOXX HIGH YLD CORP	USD	87.66	0.07%	0.15%	0.63%	0.41%	NYSE Arca
FINANCIAL SELECT SECTOR SPDR	USD	35.97	0.17%	-3.41%	-4.28%	22.01%	NYSE Arca
VANECK GOLD MINERS	USD	34.55	-0.63%	-8.09%	-12.06%	-4.08%	NYSE Arca
ISHARES RUSSELL 2000 ETF	USD	227.91	0.45%	-1.08%	3.61%	16.25%	NYSE Arca
SPDR GOLD SHARES	USD	166.25	-0.42%	-4.48%	-5.56%	-6.79%	NYSE Arca
ISHARES 20+ YEAR TREASURY BO	USD	143.64	0.24%	1.84%	4.34%	-8.93%	NASDAQ GM
INVESCO QQQ TRUST SERIES 1	USD	347.57	0.93%	1.55%	6.29%	10.78%	NASDAQ GM
ISHARES BIOTECHNOLOGY ETF	USD	160.91	0.44%	0.92%	6.30%	6.22%	NASDAQ GM
ENERGY SELECT SECTOR SPDR	USD	54.43	0.67%	-3.13%	4.35%	43.61%	NYSE Arca
PROSHARES ULTRA VIX ST FUTUR	USD	30.00	-7.58%	-4.76%	-31.51%	-71.83%	Close BZX
UNITED STATES OIL FUND LP	USD	49.42	0.12%	0.90%	13.09%	49.71%	NYSE Arca
ISHARES MSCI BRAZIL ETF	USD	41.19	0.88%	0.49%	11.26%	11.11%	NYSE Arca
SPDR S&P OIL & GAS EXP & PR	USD	95.90	0.56%	-2.11%	10.73%	63.93%	NYSE Arca
UTILITIES SELECT SECTOR SPDR	USD	64.04	-0.61%	-3.63%	-3.20%	2.14%	NYSE Arca
ISHARES US REAL ESTATE ETF	USD	102.97	-0.48%	-0.81%	4.74%	20.22%	NYSE Arca
SPDR S&P BIOTECH ETF	USD	133.68	-0.82%	0.19%	5.53%	-5.04%	NYSE Arca
ISHARES IBOXX INVESTMENT GRA	USD	133.78	0.16%	0.38%	1.95%	-3.15%	NYSE Arca
ISHARES JP MORGAN USD EMERGI	USD	112.15	-0.04%	-0.28%	0.86%	-3.24%	NASDAQ GM
REAL ESTATE SELECT SECT SPDR	USD	44.72	-0.45%	-1.24%	5.62%	22.32%	NYSE Arca
ISHARES CHINA LARGE-CAP ETF	USD	45.18	-0.81%	-0.88%	0.09%	-2.69%	NYSE Arca
CONSUMER STAPLES SPDR	USD	69.24	0.14%	-2.11%	-2.51%	2.65%	NYSE Arca
VANECK JR GOLD MINERS	USD	47.89	-0.89%	-8.40%	-11.10%	-11.71%	NYSE Arca
SPDR RBC BARC HIGH YIELD BND	USD	109.50	0.03%	0.09%	0.69%	0.51%	NYSE Arca
VANGUARD REAL ESTATE ETF	USD	103.35	-0.52%	-0.97%	5.59%	21.69%	NYSE Arca
GRAYSCALE BITCOIN TRUST BTC	USD	28.01	1.12%	-15.72%	-6.94%	-12.47%	OTC US

USA Treasury Bonds Yield Curve (%)



Source: Bloomberg

Capital Market Laboratory Coordinator: Economist Bruno Bellido
Collaboration: Maria Camarena, Alonso García, Nicolas Muñoz, Adrian Paredes y Jairo Valverde
email: pulsohorsati@ulima.edu.pe
facebook: www.facebook.com/pulsohorsati.ul

LIMA

Stocks

Ticker	Currency	Price	1D*	5D*	30D*	YTD*	Frequency	Volume (US\$)	Beta	Dividend Yield (%)	Price Earning	Market Cap. (M US\$)	Economic Sector*	Index Weight	
-	ALICORC1 PE**	S/.	6.16	0.00%	-0.65%	-0.92%	-8.71%	100.00%	183,398	1.02	4.06	11.62	1,320.81	Industrial	3.53%
-	ATACOCB1 PE**	S/.	0.10	0.00%	0.00%	-27.54%	-27.54%	44.44%	3,769	1.18	0.00	-	23.74	Mining	1.02%
▼	BACKUSH1 PE**	S/.	17.00	-2.86%	-1.73%	-5.56%	-15.63%	94.44%	6,582	0.75	7.57	8.20	6,248.74	Industrial	0.82%
▼	BAP PE**	US\$	116.01	-0.22%	-3.85%	-14.32%	-27.76%	100.00%	219,627	1.15	0.00	-	10,949.29	Diverse	5.82%
▲	BVN PE**	US\$	9.32	2.08%	-9.16%	-16.64%	-22.33%	100.00%	19,128	1.11	0.00	-	2,564.51	Mining	5.88%
-	CASAGRC1 PE**	S/.	3.85	-2.53%	1.05%	-29.87%	-18.95%	88.89%	28,331	1.26	19.43	2.84	81.50	Agricultural	1.31%
-	BBVAC1 PE**	S/.	1.92	0.00%	-2.04%	-7.25%	-11.52%	100.00%	29,720	1.09	2.35	27.41	3,150.22	Finance	2.85%
▼	CORAREH1 PE**	S/.	0.90	-4.26%	0.00%	-10.89%	1.12%	100.00%	33,659	1.33	22.60	2.88	341.85	Industrial	1.72%
▼	CPACASC1 PE**	S/.	5.15	-0.96%	-16.26%	-3.38%	-2.83%	94.44%	10,236	0.71	15.34	36.79	602.20	Industrial	2.38%
▲	CVERDEC1 PE**	US\$	16.10	2.55%	0.69%	-15.71%	-23.04%	100.00%	115,617	1.45	3.55	9.22	5,635.90	Mining	5.25%
▼	ENGEPEC1 PE**	S/.	1.98	-0.50%	-1.98%	-10.81%	-1.00%	83.33%	1,518	0.69	9.97	12.10	1,412.46	Public Services	1.44%
-	ENDISPC1**	S/.	3.90	0.00%	-4.18%	-19.59%	-27.78%	44.44%	163,584	0.78	0.00	8.77	625.82	Public Services	0.98%
▼	FERREYC1 PE**	S/.	1.43	-1.38%	-4.67%	-23.53%	-17.82%	100.00%	1,227,349	1.11	12.73	6.32	350.61	Diverse	4.90%
▼	AENZAC1 PE**	S/.	1.16	-4.92%	-0.85%	4.50%	-33.33%	88.89%	191,168	0.73	0.00	-	254.17	Diverse	4.05%
▼	IFS PE**	US\$	24.95	-0.60%	-2.35%	-11.24%	-19.36%	100.00%	4,119,754	1.19	3.09	14.96	2,880.42	Diverse	7.22%
▼	INRETC1 PE**	US\$	34.85	-0.49%	-0.43%	-9.24%	-11.10%	100.00%	1,300,486	0.83	1.95	75.96	3,582.83	Diverse	5.28%
-	LUSURC1 PE**	S/.	11.07	0.00%	-5.47%	-6.97%	-56.59%	100.00%	21,471	0.73	0.00	11.99	1,354.61	Public Services	1.81%
-	MINSUR11 PE**	S/.	2.51	0.00%	-4.20%	-13.45%	35.68%	94.44%	1,747	0.97	13.31	4.80	1,818.45	Mining	3.09%
▲	PML PE**	US\$	0.10	6.38%	5.26%	-18.03%	-5.66%	72.22%	5,530	1.42	0.00	-	26.44	Mining	2.12%
▲	RELAPAC1 PE**	S/.	0.13	0.76%	5.60%	20.00%	91.30%	94.44%	30,425	1.14	0.00	3.37	275.95	Industrial	2.12%
▲	SOCO PE**	US\$	61.52	1.18%	-2.81%	-11.55%	-6.65%	88.89%	25,074	0.97	3.58	21.38	47,559.47	Mining	2.14%
▼	SIDERC1 PE**	S/.	0.90	-2.17%	-7.22%	-6.25%	5.88%	88.89%	19,413	0.94	24.94	4.50	200.82	Industrial	1.43%
-	TV PE**	US\$	0.18	0.00%	-3.85%	-15.87%	19.05%	94.44%	4,410	1.24	0.00	-	173.09	Mining	2.93%
▼	UNACEMC1 PE**	S/.	1.20	-0.83%	-6.25%	-21.57%	-22.58%	94.44%	208,149	1.16	2.17	9.47	548.26	Industrial	3.00%
▼	VOLGABC1 PE**	S/.	0.49	-1.02%	-6.73%	-30.71%	-6.73%	100.00%	18,505	1.59	0.00	-	496.84	Mining	5.90%
▼	NEXAPEC1 PE**	S/.	3.04	-0.65%	-7.88%	-8.71%	7.42%	72.22%	2,788	1.12	0.00	22.84	1,010.30	Mining	1.56%

Quantity of shares: 26
Source: Bloomberg, Económica
* Bloomberg Industry Classification System
** PER is used in the stock market and original currency of the instrument
*Legend: Variation 1D: 1 Day; 5D: 5 Days, 1M: 1 Month; YTD: Var.% 12/31/20 to date

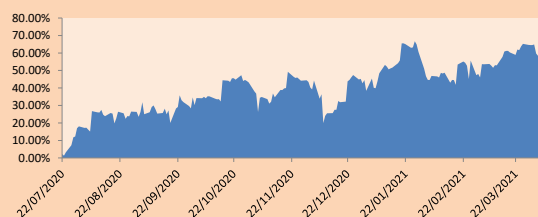
Sectorial Indices

	Close	1D*	5D*	30D*	YTD*	Beta	
▲	S&P/BVLMining	388.76	1.88%	-2.45%	-8.86%	-0.31%	0.94
▼	S&P/BVLConsumer	1,024.45	-0.35%	-0.94%	-4.96%	-5.89%	0.39
▼	S&P/BVLIndustrials	171.21	-1.63%	-3.58%	-9.42%	-10.15%	0.49
▲	S&P/BVLFinancials	837.63	0.38%	-1.30%	-8.72%	-18.98%	1.76
▼	S&P/BVLConstruction	188.07	-1.78%	-3.42%	-3.53%	-10.07%	0.54
▼	S&P/BVLPublicSvcs	518.23	-0.92%	-2.06%	-9.72%	-15.61%	0.13
▼	S&P/BVLElectricUtil	505.92	-0.92%	-2.06%	-9.72%	-15.61%	0.13

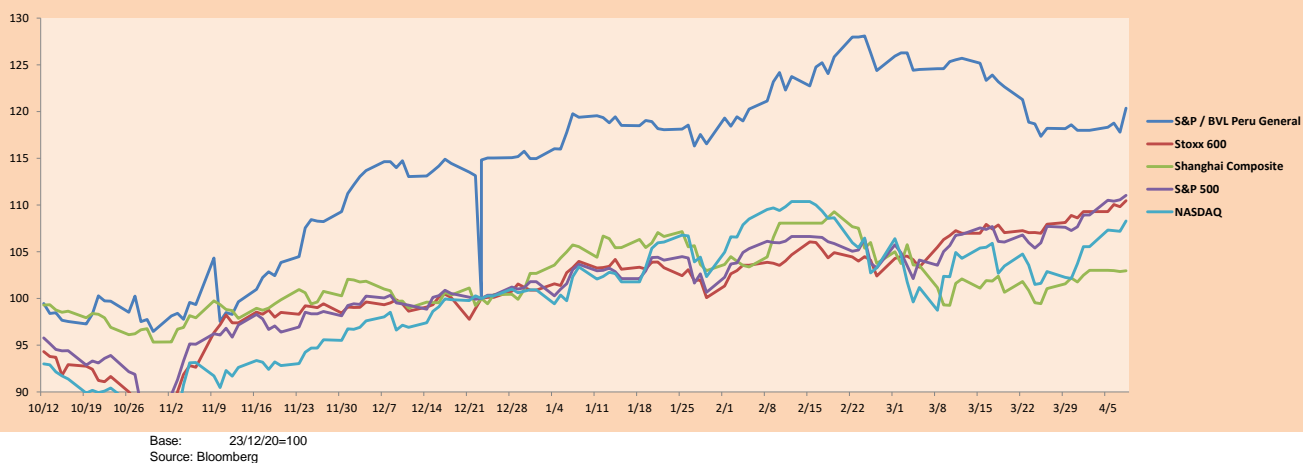
S&P/BVLConstructionTRPEN

*Legend: Variation 1D: 1 Day; 5D: 5 Days, 1M: 1 Month; YTD: Var.% 12/31/20 to date

Correlation Graph of Returns of Mining Index against Metallic Index of London (3 months)



Indices (6 months)



Base: 23/12/20=100
Source: Bloomberg

Capital Market Laboratory Coordinator: Economist Bruno Bellido
Collaboration: María Camarena, Alonso García, Nicolás Muñoz, Adrián Paredes y Jairo Valverde
email: pulsobursatil@ulima.edu.pe
facebook: www.facebook.com/pulsobursatil

SOVEREIGN RATING

RISK RATINGS

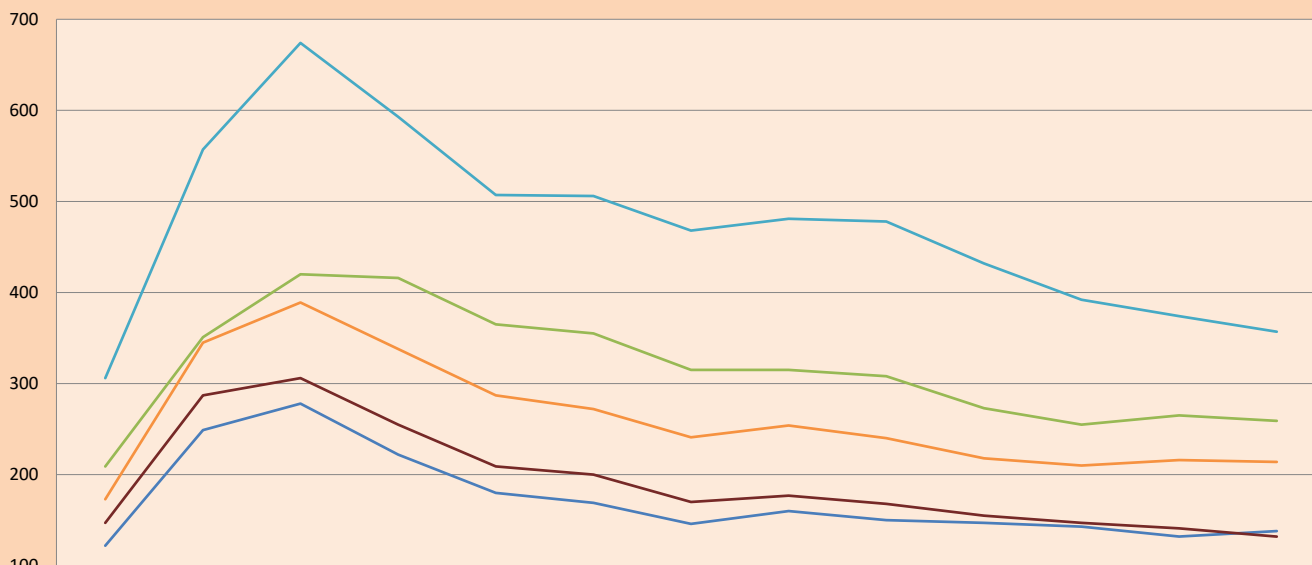
Moody's	S&P	Fitch	
Aaa	AAA	AAA	Prime
Aa1	AA+	AA+	High credit quality
Aa2	AA	AA	
Aa3	AA-	AA-	
A1	A+	A+	Medium-high grade, with low credit risk
A2	A	A	
A3	A-	A-	
Baa1	BBB+	BBB+	Moderate Credit Risk
Baa2	BBB	BBB	
Baa3	BBB-	BBB-	
Ba1	BB+	BB+	It has speculative elements and it is subject to substantial credit risk
Ba2	BB	BB	
Ba3	BB-	BB-	
B1	B+	B+	It is considered speculative and it has high credit risk
B2	B	B	
B3	B-	B-	
Caa1	CCC+	CCC	Bad credit conditions and it is subject to high credit risk
Caa2	CCC		
Caa3	CCC-		
Ca	C	DDD	Very close to default or in default
C	D		

Source: Bloomberg

Latin America Credit Rating			
Clasificadora de riesgo			
Country	Moody's	Fitch	S&P
Peru	A3	BBB+	BBB+
México	Ba2	BB-	BB-
Venezuela	C	WD	SD
Brazil	Ba2	BB-	BB-
Colombia	Baa2	BBB-	BB+
Chile	A1	A-	A
Argentine	Ca	WD	CCC+
Panama	Baa2	BBB-	BBB

Source: Bloomberg

LATAM Country Risk (bps)



	Feb-20	Mar-20	Abr-20	May-20	Jun-20	Jul-20	Ago-20	Set-20	Oct-20	Nov-20	Dic-20	Ene-21	Feb-21
Perú	122	249	278	222	180	169	146	160	150	147	143	132	138
Brasil	209	351	420	416	365	355	315	315	308	273	255	265	259
México	306	557	674	593	507	506	468	481	478	432	392	374	357
Colombia	173	345	389	338	287	272	241	254	240	218	210	216	214
Chile	147	287	306	255	209	200	170	177	168	155	147	141	132

Source: BCRP

Capital Market Laboratory Coordinator: Economist Bruno Bellido
Collaboration: María Camarena, Alonso García, Nicolás Muñoz, Adrián Paredes y Jairo Valverde
email: pulsobursatil@ulima.edu.pe
facebook: www.facebook.com/pulsobursatil.ul