

PULSO BURSÁTIL

FACULTAD DE CIENCIAS EMPRESARIALES Y ECONÓMICAS
CARRERA DE ECONOMÍA
LABORATORIO DE MERCADO DE CAPITALES

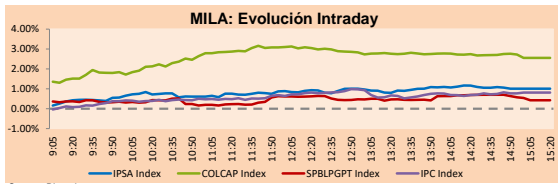


MILA

Lima, June 24, 2021

Main Indexes	Close	1 D	5 D	1 M	YTD	Cap. Burs. (US\$ bill)
▲ IPISA (Chile)	4,421.23	1.17%	1.49%	7.43%	5.84%	121.23
▲ IGPA (Chile)	22,180.83	1.12%	1.37%	6.94%	5.59%	144.44
▲ COLCAP (Colombia)	970.51	1.05%	0.28%	0.07%	-8.36%	4.40
▲ COLCAP (Colombia)	1,278.81	2.55%	2.40%	4.16%	-11.06%	74.58
▲ S&P/BVL (Perú)*	18,858.68	0.42%	0.87%	-7.33%	-9.43%	89.11
▲ S&P/BVL SEL (Perú)	498.75	0.36%	2.00%	-6.58%	-9.55%	80.17
▼ S&P/BVL LIMA 25	23,917.51	-0.02%	0.08%	-7.42%	-5.08%	88.34
▲ IPC (México)	50,558.32	0.77%	0.71%	2.22%	14.73%	307.98
▲ S&P MILA 40	488.72	1.80%	2.13%	1.84%	-8.59%	6,116.35

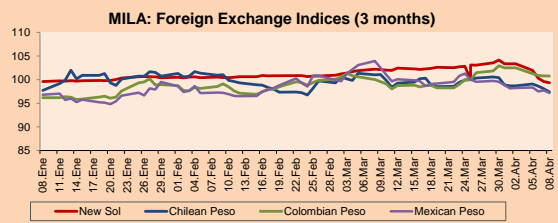
*Legend: Variation 1D: 1 day; 5D: 5 days; 1M: 1 Month; YTD: Var% 12/31/20 to date



Source: Bloomberg

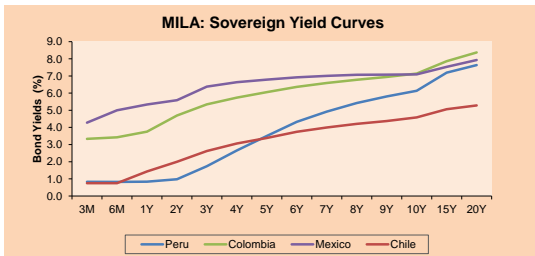
Currency	Price	1D*	5D*	30 D*	YTD*
▲ Sol (PEN)	3,9850	0.14%	1.70%	4.23%	10.14%
▼ Chilean Peso (CLP)	734.57	-0.06%	-0.40%	0.03%	3.20%
▼ Colombian Peso (COP)	3,774.42	-0.28%	1.64%	1.06%	10.05%
▼ Mexican Peso (MXN)	19.86	-1.69%	-2.79%	-0.21%	-0.28%

*Legend: Variation 1D: 1 day; 5D: 5 days; 1M: 1 Month; YTD: Var% 12/31/20 to date



Base: 25/03/21=100
Source: Bloomberg

Fixed Income	Currency	Price	Bid Yield (%)	Ask Yield (%)	Duration
PERU 7.35 07/21/25	USD	122.818	1.59	1.48	3.54
PERU 4.125 08/25/27	USD	111.633	2.14	2.06	5.48
PERU 8.75 11/21/33	USD	156.406	3.24	3.16	8.71
PERU 6.55 03/14/37	USD	136.895	3.51	3.45	10.31
PERU 5.625 11/18/2050	USD	135.693	3.66	3.62	16.59
CHILE 2.25 10/30/22	USD	102.476	0.56	0.23	1.33
CHILE 3.125 01/21/26	USD	108.38	1.28	1.18	4.26
CHILE 3.625 03/30/42	USD	106.01	3.25	3.21	15.32
COLOM 11.85 03/09/28	USD	157.228	2.67	2.36	5.09
COLOM 10.375 01/28/33	USD	149.281	4.89	4.68	7.55
COLOM 7.375 09/18/37	USD	130.695	4.69	4.62	10.33
COLOM 6.125 01/18/41	USD	117.847	4.74	4.69	11.97
MEX 4 10/02/23	USD	117.847	4.744	4.691	11.97
MEX5.55 01/45	USD	120.764	4.19	4.13	14.04



Source: Bloomberg

Equity

Largest gains	Exchange	Currency	Price	▲%	Largest losses	Exchange	Currency	Price	▼%
ECOPETROL	Colombia	COP	2750.00	9.04	VOLCAN CIA MIN-B	Peru	PEN	0.47	-4.86
CEMEX SAB-CPO	Mexico	MXN	17.18	6.44	FERREYCORP SAA	Peru	PEN	1.37	-4.20
PARQUE ARAUCO	Chile	CLP	1067.00	5.64	CENCOSUD SHOPPIN	Chile	CLP	1295	-2.19
CERVEZAS	Chile	CLP	7220.00	4.78	SMU SA	Chile	CLP	90.1	-1.93
CEMENTOS ARGOS	Colombia	COP	5460.00	3.70	FIBRA UNO	Mexico	MXN	22.23	-1.42

Per Turnover	Exchange	Amount (US\$)	Per Volume	Exchange	Volume
WALMART DE MEXIC	Mexico	93,765,773	ITAU CORPBANCA	Chile	161,367,478
CEMEX SAB-CPO	Mexico	45,657,563	BANCO SANTANDER	Chile	114,287,974
GRUPO F BANORT-O	Mexico	45,160,156	BANCO DE CHILE	Chile	73,601,315
GRUPO MEXICO-B	Mexico	30,428,306	ENEL AMERICAS SA	Chile	56,336,880
AMERICA MOVIL-L	Mexico	20,635,885	CEMEX SAB-CPO	Mexico	53,232,192

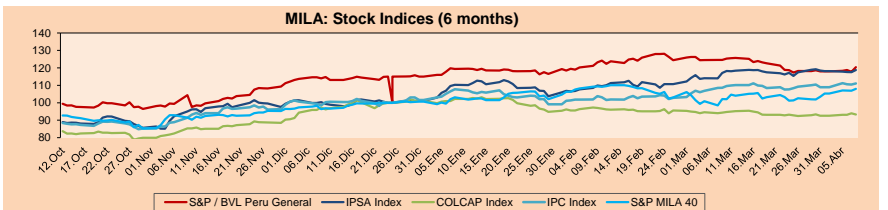
MILA

Peru: The General Index of the BVL ended today's session with a positive result of + 0.542%. The index maintains an annual accumulated negative trend of -9.43% in local currency, while the adjusted return in dollars amounts to -17.77%. Then, the S&P / BVL Peru SEL varied by + 0.36% while the S&P / BVL LIMA 25 by -0.02%. The PEN spot reached 5 / 3.9850. Headline: Public companies start 2021 with surplus, after five years of deficit

Chile: The IPISA index ended the day with a positive return of + 1.17%. The sectors that benefited the most from the conference were Information Technology (+ 2.30%) and Real Estate (+ 2.29%). The stocks with the best performance were Parque Arauco (+ 5.64%) and CIA Cervecerias Unidas (+ 4.78%). Headline: The IPISA intensifies its rise with the exit from quarantine of much of Santiago and on Wall Street the S&P 500 hits an all-time high.

Colombia: The COLCAP index closed today with a positive return of + 2.55%. The sectors that benefited the most from the session were Energy (+ 8.33%) and Materials (+ 2.60%). The stocks with the best performance were Ecopetrol SA (9.04%) and Cementos Argos SA (+ 3.70%). Owner: Ecopetrol extends exclusivity term in acquisition of ISA

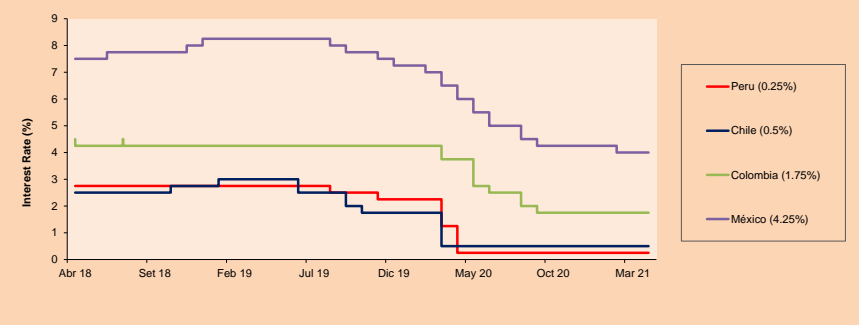
Mexico: The IPC index closed the day with a positive return of + 0.77%. The sectors that benefited the most from the conference were Materials (+ 2.74%) and Non-Basic Consumer Products (+ 1.30%). The best performing stocks were Cemex SAB-CPO (+ 6.44%) and Banco del Bajío (+ 2.61%) Headline: COVID vaccines will catapult emerging markets ... and that's good for Mexico



Base: 12/10/20=100
Source: Bloomberg

ETFs	Curr.	Close	1D	5D	30 D	YTD	Exchange
▲ iShares MSCI All Peru Caped Index Fund	USD	28.44	1.07%	-1.66%	-9.83%	-17.99%	NYSE Arca
▲ iShares MSCI All Chile Caped Index Fund	USD	29.63	1.89%	2.46%	6.77%	-1.92%	Cboe BZX
▲ Global X MSCI Colombia	USD	10.145	2.94%	2.47%	4.48%	-10.70%	NYSE Arca
▲ iShares MSCI Mexico Capped	USD	48.32	1.83%	2.24%	2.46%	12.40%	NYSE Arca
▲ iShares MSCI Emerging Markets	USD	55.04	0.92%	0.79%	1.72%	6.52%	NYSE Arca
▲ Vanguard FTSE Emerging Markets	USD	54.12	0.74%	0.07%	1.90%	8.00%	NYSE Arca
▲ iShares Core MSCI Emergina Markets	USD	66.89	0.87%	0.80%	1.86%	7.82%	NYSE Arca
▲ iShares JP Morgan Emerging Markets Bonds	USD	64.09	0.44%	0.17%	-0.13%	4.93%	Cboe BZX
▲ Morgan Stanley Emerging Markets Domestic	USD	6.14	0.16%	0.00%	-0.32%	-2.38%	New York

MILA: Policy Rate



Source: Bloomberg

Capital Market Laboratory Coordinator: Economist Bruno Bellido
 Collaboration: María Camarena, Alonso García, Adrián Paredes y Jairo Valverde
 email: pulsobursatil@ulima.edu.pe
 facebook: www.facebook.com/pulsobursatil

The content of this document is just for informational purposes. The information and opinions expressed should not be considered as recommendations for future decisions. Under any circumstances, the Capital Market Laboratory of University of Lima will be responsible for the use of the statements in this document.

WORLD

Main Indices	Close	1 D*	5 D*	1 M*	YTD*	Market Cap. (US\$ Mill.)
▲ Dow Jones (USA)	34,198.82	0.95%	1.10%	-0.57%	11.73%	10,288,731
▲ Standard & Poor's 500 (EEOU)	4,266.49	0.58%	1.06%	1.65%	13.59%	37,483,591
▲ NASDAQ Composite (USA)	14,369.71	0.69%	1.47%	5.19%	11.49%	23,863,985
▲ Stoxx EUROPE 600 (Europe)	457.04	0.87%	-0.50%	2.66%	14.54%	10,661,873
▲ DAX (Germany)	15,589.23	0.86%	-0.88%	0.80%	13.63%	1,173,168
▲ FTSE 100 (United Kingdom)	7,109.97	0.51%	-0.61%	1.14%	10.05%	1,469,981
▲ CAC 40 (France)	6,831.15	1.22%	-0.53%	3.77%	19.45%	1,838,590
▲ IBEX 35 (Spain)	9,074.10	1.34%	-1.32%	-1.46%	12.39%	510,342
▲ MSCI AC Asia Pacific Index	207.24	0.17%	-0.43%	1.48%	3.66%	26,788,446
▲ HANG SENG (Hong Kong)	28,882.46	0.23%	1.13%	-0.10%	6.06%	4,434,054
▲ SHANGHAI SE Comp. (China)	3,566.65	0.01%	1.16%	-0.41%	2.69%	6,894,284
▲ NIKKEI 225 (Japan)	28,875.23	0.00%	-0.49%	1.13%	5.21%	3,924,885
▲ S&P / ASX 200 (Australia)	7,275.27	-0.32%	-1.14%	2.25%	10.45%	1,759,055
▲ KOSPI (South Korea)	3,286.10	0.77%	0.71%	3.62%	14.36%	1,948,623

*Legend: Variation 1D: 1 Day; 5D: 5 Days; 1M: 1 Month; YTD: Var. % 12/31/20 to date

Equity

Germany (Stocks from DAX Index)				Exchange			
Largest gains	Curr.	Price	▲%	Largest losses	Curr.	Price	▼%
DHER GY	EUR	108.75	2.59	DWNI GY	EUR	51.5	-0.04
ENR GY	EUR	25.51	2.45	FRE GY	EUR	43.98	0.01
IFX GY	EUR	33.055	2.21	LIN GY	EUR	240.25	0.08
DPW GY	EUR	58.31	2.08	1COV GY	EUR	54.58	0.26

Europe (Stocks from STOXX EUROPE 600)				Exchange			
Largest gains	Curr.	Price	▲%	Largest losses	Curr.	Price	▼%
ADYEN NA	EUR	2021	5.67	VOD LN	Gbp	125.3	-4.10
SOP FP	EUR	183.9	4.53	TRN LN	Gbp	290	-3.91
EVO SS	SEK	1477.4	4.45	TATE LN	Gbp	742.8	-3.36
NEXI IM	EUR	18.635	4.05	UU/LN	Gbp	990.2	-3.02

Global Overview:

United States:

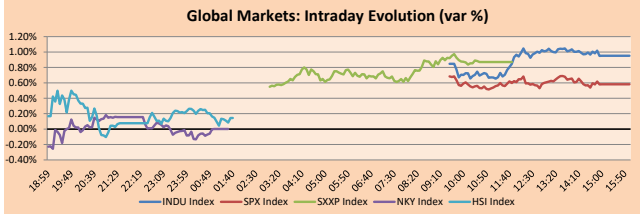
Major US indexes closed the day with positive returns after President Joe Biden accepted a bipartisan infrastructure deal in the Senate. Investors also hope that this plan will be the next step in the recovery of the US economy and obtaining higher profits through stocks. In this way, the Dow ended higher, driven by key companies such as Caterpillar and Boeing which increased more than 2%. On the other hand, the Nasdaq and the S & P500 closed with all-time highs, thanks to the rise in technology shares, highlighting Tesla that it rose by 3.5% after Elon Musk said it would include SpaceX when its flow is more predictable, and shareholders of Tesla could have investment preference. Lastly, relative to stocks, Eli Lilly and Co rose 7.3% after it submitted its experimental Alzheimer's drug to the FDA this year. On the other hand, the company Biogen Inc, which obtained a contractual proof for its drug against the same disease, fell by 6.1%. Thus, DOW JONES + 0.95%; S&P 500 + 0.58%; NASDAQ + 0.69% ended the day with positive returns.

Europe:

European markets ended stocks with positive results, driven by technology stocks and focused on the economic rebound, despite fears of a possible early rate cut by the Federal Reserve. The pan-European STOXX600 index ended higher, closing with all its sectors higher, except for Communication Services, which fell 0.06%. Likewise, the growth of technology stocks on the Nasdaq impacted the index positively. On the other hand, the European Central Bank does not consider withdrawing support since it considers that it is still too early, giving investors confidence. On the other hand, the German DAX index closed higher, thanks to the business climate index exceeding expectations reaching its highest level since the end of 2018. The London FTSE100 index closed higher, as the Bank of England held its policy rates unchanged, and I highlight that current inflation was only temporary while the economy is reopening. Lastly, relative to shares, Tecan Group rose 10.8%, after purchasing medical devices from the US group Paramit Corp for a billion dollars. Thus, the STOXX 600 + 0.87%, CAC 40 + 1.22%, FTSE 100 + 0.51%, DAX + 0.86% closed with positive returns.

Asia:

Asian mainland indexes ended trading with slightly upward returns as Asia's major markets closed flat. In China, indices posted positive results during the day, after consumer and energy companies offset losses generated by healthcare companies, hit by concerns of a drop in drug prices. At the same time, a senior official from China's banking and insurance watchdog indicated that the monthly producer price index (PPI) will increase by 10% in June, hurting intermediate consumers. In Japan, the index closed unchanged from the previous session due to uncertainty over domestic corporate earnings, announced in a few weeks. Notable Japanese stocks included Mercari +8.48% after it forecast an annual net profit of 5 million yen. In South Korea, stocks closed near all-time highs thanks to the positive performance of its leading chip stocks: Samsung Electronics +1.37% and SK Hynix +1.61%. Finally, Australian stocks closed lower, dragged down by banking stocks, in addition to the continued rise in coronavirus cases. Thus, NIKKEI 0.00%; HANG SENG +0.23%; CSI 300 +0.17%; SHANGHAI COMPOSITE +0.01%; KOSPI +0.30%; S&P/ASX 200 -0.32% closed with positive performances.

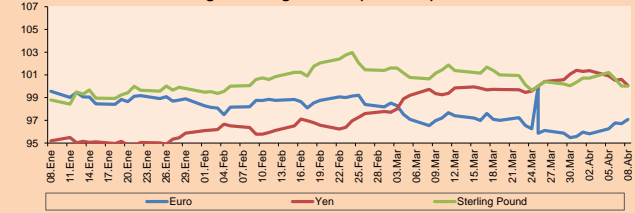


Source: Bloomberg

Currency	Price	1 D*	5 D*	1 M*	YTD*
▲ Euro	1.1932	0.05%	0.21%	-2.60%	-2.32%
▼ Yen	110.8700	-0.08%	0.60%	1.92%	7.38%
▼ Sterling Pound	1.3922	-0.30%	0.00%	-1.63%	1.84%
▼ Yuan	6.4719	-0.04%	0.37%	0.95%	-0.85%
▼ Hong Kong Dollar	7.7632	-0.02%	-0.02%	0.01%	0.13%
▼ Brazilian Real	4.9146	-1.05%	-1.87%	-7.82%	-5.46%
▼ Argentine Peso	95.5584	0.03%	0.21%	1.36%	13.56%

*Legend: Variation 1D: 1 Day; 5D: 5 Days; 1M: 1 Month; YTD: Var. % 12/31/20 to date

Foreign Exchange Indices (3 months)

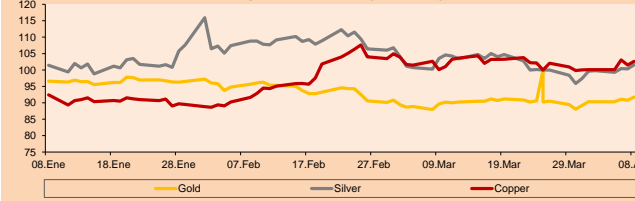


Base: 25/03/21=100
Source: Bloomberg

Commodities	Close	1 D*	5 D*	1 M*	YTD*
▼ Oro (US\$ Oz. T) (LME)	1,775.17	-0.20%	0.09%	-6.53%	-6.49%
▲ Plata (US\$ Oz. T) (LME)	25.95	0.21%	0.16%	-7.33%	-1.72%
▼ Cobre (US\$ TM) (LME)	9,391.75	-0.64%	1.11%	-5.14%	21.20%
▲ Zinc (US\$ TM) (LME)	2,901.75	0.82%	0.13%	-2.24%	6.32%
▲ Petróleo WTI (US\$ Barril) (NYM)	73.30	0.30%	3.56%	11.42%	51.54%
▲ Estiáno (US\$ TM) (LME)	32,354.00	0.89%	0.74%	2.34%	57.39%
▲ Plomo (US\$ TM) (LME)	2,209.00	1.34%	4.54%	2.49%	11.81%
▲ Azúcar #11 (US\$ Libra) (NYB-ICE)	17.24	1.35%	3.17%	0.35%	22.79%
▼ Café (US\$ TM) (NYB-ICE)	2,344.00	-1.06%	-1.55%	-3.42%	-6.46%
▼ Café Arábica (US\$ TM) (NYB-ICE)	153.40	-0.32%	1.19%	0.62%	15.08%

*Legend: Variación 1D: 1 Día; 5D: 5 Días; 1M: 1 Mes; YTD: Var. % 31/12/20 a la fecha

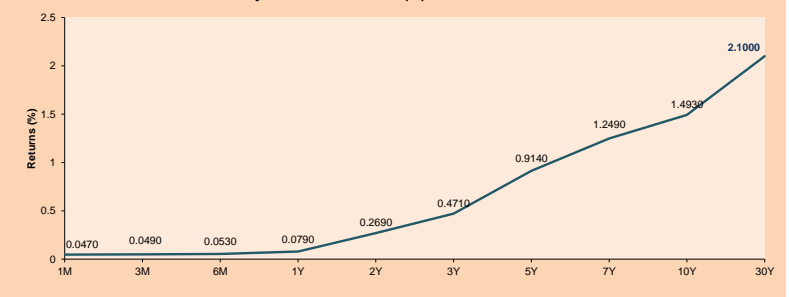
Principal Metals Index (3 months)



Base: 25/03/21=100
Source: Bloomberg

ETFs	Curr.	Close	1D	5D	30 D	YTD	Exchange
SPDR S&P 500 ETF TRUST	USD	425.10	0.59%	0.74%	1.64%	13.70%	NYSE Arca
ISHARES MSCI EMERGING MARKET	USD	55.04	0.92%	0.79%	1.72%	6.52%	NYSE Arca
ISHARES IBOXX HIGH YLD CORP	USD	87.04	0.31%	0.42%	0.71%	0.62%	NYSE Arca
FINANCIAL SELECT SECTOR SPDR	USD	36.49	1.25%	1.08%	-2.38%	23.78%	NYSE Arca
VANECK GOLD MINERS	USD	34.44	0.32%	-1.40%	-12.85%	-4.39%	NYSE Arca
ISHARES RUSSELL 2000 ETF	USD	231.89	1.41%	2.02%	5.76%	18.29%	NYSE Arca
SPDR GOLD SHARES	USD	165.04	-0.06%	0.11%	-6.69%	-6.91%	NYSE Arca
ISHARES 20+ YEAR TREASURY BO	USD	143.50	0.16%	0.32%	2.90%	-9.02%	NASDAQ GM
INVESCO QQQ TRUST SERIES 1	USD	349.89	0.62%	1.32%	5.08%	11.52%	NASDAQ GM
ISHARES BIOTECHNOLOGY ETF	USD	161.77	0.79%	1.70%	8.07%	6.79%	NASDAQ GM
ENERGY SELECT SECTOR SPDR	USD	55.05	0.86%	-1.96%	6.67%	45.25%	NYSE Arca
PROSHARES ULTRA VIX ST FUTUR	USD	28.21	-3.26%	-11.07%	-31.03%	-73.51%	Close BZX
UNITED STATES OIL FUND LP	USD	49.84	0.24%	3.75%	10.95%	50.98%	NYSE Arca
ISHARES MSCI BRAZIL ETF	USD	41.96	1.21%	4.20%	12.92%	13.19%	NYSE Arca
SPDR S&P OIL & GAS EXP & PR	USD	98.58	1.60%	5.98%	15.57%	68.51%	NYSE Arca
UTILITIES SELECT SECTOR SPDR	USD	63.30	-0.09%	-3.81%	-2.97%	0.96%	NYSE Arca
ISHARES US REAL ESTATE ETF	USD	102.36	-0.33%	-0.66%	2.86%	19.51%	NYSE Arca
SPDR S&P BIOTECH ETF	USD	137.29	2.22%	2.17%	10.49%	-2.48%	NYSE Arca
ISHARES IBOXX INVESTMENT GRA	USD	133.83	0.19%	0.14%	1.33%	-3.11%	NYSE Arca
ISHARES JP MORGAN US EMERGI	USD	112.32	0.04%	0.33%	0.42%	-3.10%	NASDAQ GM
REAL ESTATE SELECT SECT SPDR	USD	44.37	-0.47%	-1.49%	3.38%	21.36%	NYSE Arca
ISHARES CHINA LARGE-CAP ETF	USD	46.23	1.05%	1.58%	0.17%	-0.43%	NYSE Arca
CONSUMER STAPLES SPDR	USD	69.15	0.49%	-1.27%	-2.95%	2.52%	NYSE Arca
VANECK JR GOLD MINERS	USD	47.87	0.63%	-1.89%	-12.12%	-11.74%	NYSE Arca
SPDR RBC BARO HIGH YIELD BND	USD	108.74	0.22%	0.35%	0.77%	0.73%	NYSE Arca
VANGUARD REAL ESTATE ETF	USD	102.22	-0.92%	-1.28%	-3.18%	20.38%	NYSE Arca
GRAYSCALE BITCOIN TRUST BTC	USD	29.61	6.55%	-5.28%	-6.03%	-7.47%	OTC US

USA Treasury Bonds Yield Curve (%)



Source: Bloomberg

Capital Market Laboratory Coordinator: Economist Bruno Bellido
Collaboration: María Camarena, Alonso García, Adrian Paredes y Jairo Valverde
email: pulsoBursatil@ulima.edu.pe
facebook: www.facebook.com/pulsoBursatil.u

LIMA

Stocks

Ticker	Currency	Price	1D*	5D*	30D*	YTD*	Frequency	Volume (US\$)	Beta	Dividend Yield (%)	Price Earning	Market Cap. (M US\$)	Economic Sector*	Index Weight
▲ ALICORC1 PE**	S/.	6.10	1.05%	0.28%	0.07%	-8.36%	100.00%	10,208	1.02	4.10	11.51	1,306.19	Industrial	3.53%
▲ ATACOCB1 PE**	S/.	0.10	0.00%	-2.00%	-10.91%	-28.99%	44.44%	2,582	1.18	0.00	-	23.23	Mining	1.02%
- BACKUSH1 PE**	S/.	16.90	0.00%	-0.59%	-5.27%	-16.13%	94.44%	912	0.75	0.00	8.15	6,225.67	Industrial	0.82%
▲ BAP PE**	US\$	118.41	1.89%	-1.42%	-9.07%	-26.27%	100.00%	2,119,381	1.14	0.00	-	11,175.81	Diverse	5.82%
▼ BVN PE**	US\$	9.31	-0.96%	-2.00%	-17.68%	-22.42%	100.00%	34,312	1.11	0.00	-	2,561.75	Mining	5.88%
- CASAGRC1 PE**	S/.	3.60	0.00%	-5.76%	-29.41%	-24.21%	88.89%	779	1.25	0.00	2.66	76.10	Agricultural	1.31%
▼ BBVAC1 PE**	S/.	1.85	-0.27%	-0.80%	-3.75%	-11.74%	100.00%	85,657	1.10	2.36	27.34	3,031.11	Finance	2.85%
▲ CORAREH1 PE**	S/.	0.91	2.25%	3.41%	-7.14%	2.25%	100.00%	23,790	1.34	22.35	2.91	339.46	Industrial	1.72%
▲ CPACASC1 PE**	S/.	4.93	-3.71%	-18.91%	-6.98%	-6.98%	94.44%	35,188	0.71	16.02	35.21	577.95	Industrial	2.38%
- CVERDEC1 PE**	US\$	15.80	1.94%	7.85%	-12.22%	-24.47%	100.00%	64,977	1.45	3.62	9.05	5,530.89	Mining	5.25%
▲ ENGEPEC1 PE**	S/.	1.98	0.00%	-1.49%	-5.71%	-1.00%	83.33%	468	0.69	0.00	12.10	1,410.47	Public Services	1.44%
- ENDISPC1**	S/.	3.90	0.00%	-2.01%	-13.33%	-27.78%	44.44%	163,354	0.78	0.00	8.77	624.94	Public Services	0.98%
▼ FERREYV1 PE**	S/.	1.37	-4.20%	-2.84%	-21.26%	-21.26%	100.00%	515,625	1.11	13.29	6.05	335.43	Diverse	4.90%
▲ AENZAC1 PE**	S/.	1.26	3.28%	-4.55%	13.51%	-27.59%	88.89%	57,902	0.73	0.00	-	275.69	Diverse	4.05%
- IFS PE**	US\$	25.85	1.77%	1.37%	-3.26%	-16.45%	100.00%	1,541,489	1.19	2.98	15.52	2,984.32	Diverse	7.22%
- INRETC1 PE**	US\$	34.86	0.00%	2.50%	-10.15%	-11.07%	100.00%	58,216	0.82	1.95	76.08	3,583.86	Diverse	5.28%
▲ LUSURC1 PE**	S/.	10.90	0.65%	-1.80%	-0.91%	-57.25%	100.00%	2,054	0.73	10.23	11.81	1,331.94	Public Services	1.81%
- MINSUR1 PE**	S/.	2.48	0.00%	-3.13%	-13.59%	34.05%	94.44%	39,783	0.97	13.47	4.74	1,794.19	Mining	3.09%
▼ PML PE**	US\$	0.10	-3.00%	3.19%	-19.17%	-8.49%	72.22%	2,521	1.42	0.00	-	25.64	Mining	2.12%
- RELAPAC1 PE**	S/.	0.14	0.00%	9.60%	28.04%	98.55%	94.44%	18,980	1.14	0.00	3.50	286.00	Industrial	2.12%
▲ SCCO PE**	US\$	63.40	0.43%	6.11%	-5.93%	-3.79%	88.89%	134,565	0.97	3.47	22.03	49,012.85	Mining	2.14%
▲ SIDERC1 PE**	S/.	0.92	1.10%	4.55%	-2.13%	8.24%	88.89%	13,153	0.94	24.40	4.60	204.99	Industrial	1.43%
▲ TV PE**	US\$	0.18	1.14%	0.00%	-11.50%	20.41%	94.44%	3,540	1.24	0.00	-	175.07	Mining	2.93%
- UNACEMC1 PE**	S/.	1.17	0.00%	-4.10%	-19.31%	-24.52%	94.44%	882,550	1.15	2.22	9.24	533.80	Industrial	3.00%
▼ VOLCABC1 PE**	S/.	0.47	-4.86%	-4.08%	-29.85%	-9.62%	100.00%	99,008	1.60	0.00	-	480.80	Mining	5.90%
▼ NEXAPEC1 PE**	S/.	2.90	-3.33%	-6.45%	-7.64%	2.47%	72.22%	39,319	1.12	0.00	21.76	962.87	Mining	1.56%

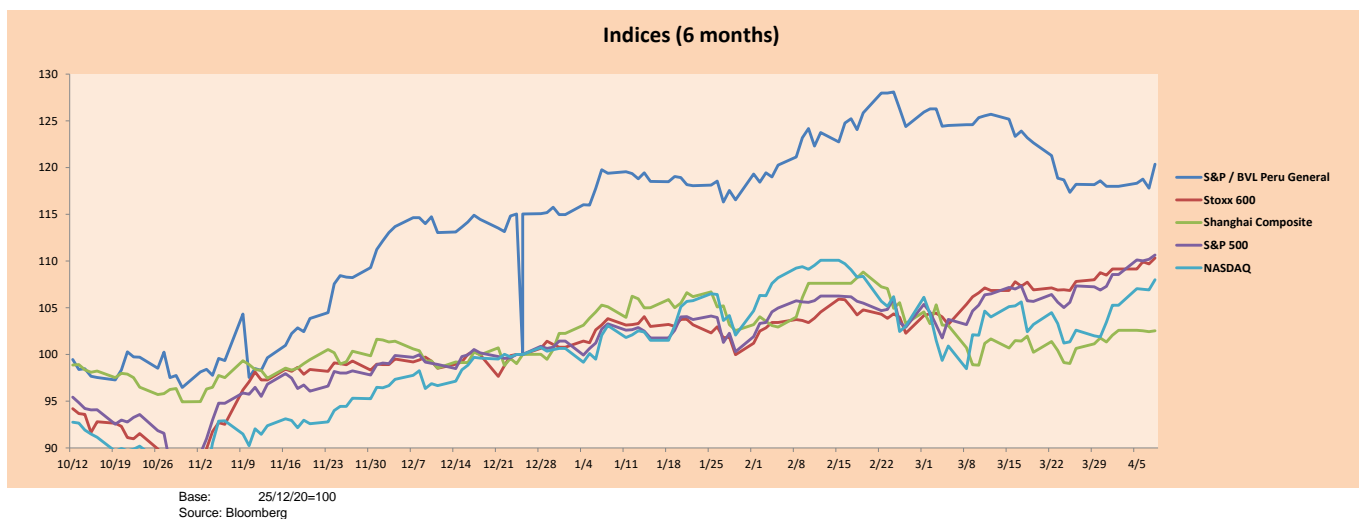
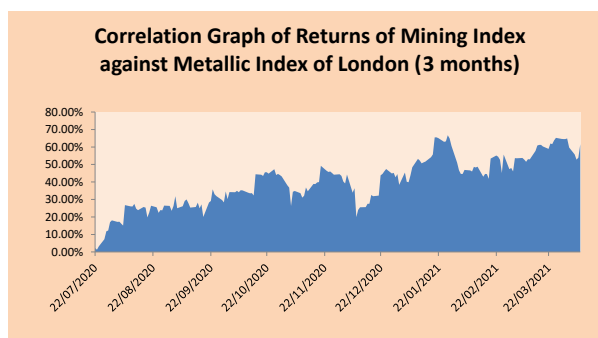
Quantity of shares: 26
 Source: Bloomberg, Económica
 * Bloomberg Industry Classification System
 ** PER is used in the stock market and original currency of the instrument
 *Legend: Variation 1D: 1 Day; 5D: 5 Days, 1M: 1 Month; YTD: Var.% 12/31/20 to date

Sectorial Indices

	Close	1D*	5D*	30D*	YTD*	Beta
▲ S&P/BVLMining	395.13	0.01%	4.61%	-6.86%	1.33%	0.95
▲ S&P/BVLConsumer	1,019.86	0.66%	2.49%	-3.59%	-6.32%	0.40
▼ S&P/BVLIndustrials	169.01	-1.42%	-3.56%	-7.21%	-11.31%	0.49
▲ S&P/BVLFinancials	856.53	1.92%	0.52%	-4.56%	-17.16%	1.77
▼ S&P/BVLConstruction	187.51	-0.40%	-4.10%	-1.72%	-10.33%	0.53
- S&P/BVLPublicSvcs	518.23	0.00%	-1.55%	-5.82%	-15.61%	0.13
- S&P/BVLElectricUtil	505.92	0.00%	-1.55%	-5.82%	-15.61%	0.13

S&P/BVLConstructionTRPEN

*Legend: Variation 1D: 1 Day; 5D: 5 Days, 1M: 1 Month; YTD: Var.% 12/31/20 to date



Capital Market Laboratory Coordinator: Economist Bruno Bellido
 Collaboration: Maria Camarena, Alonso García, Adrian Paredes y Jairo Valverde
 email: pulsobursatil@ulima.edu.pe
 facebook: www.facebook.com/pulsobursatil

The content of this document is just for informational purposes. The information and opinions expressed should not be considered as recommendations for future decisions. Under any circumstances, the Capital Market Laboratory of University of Lima will be responsible for the use of the statements in this document.

SOVEREIGN RATING

RISK RATINGS

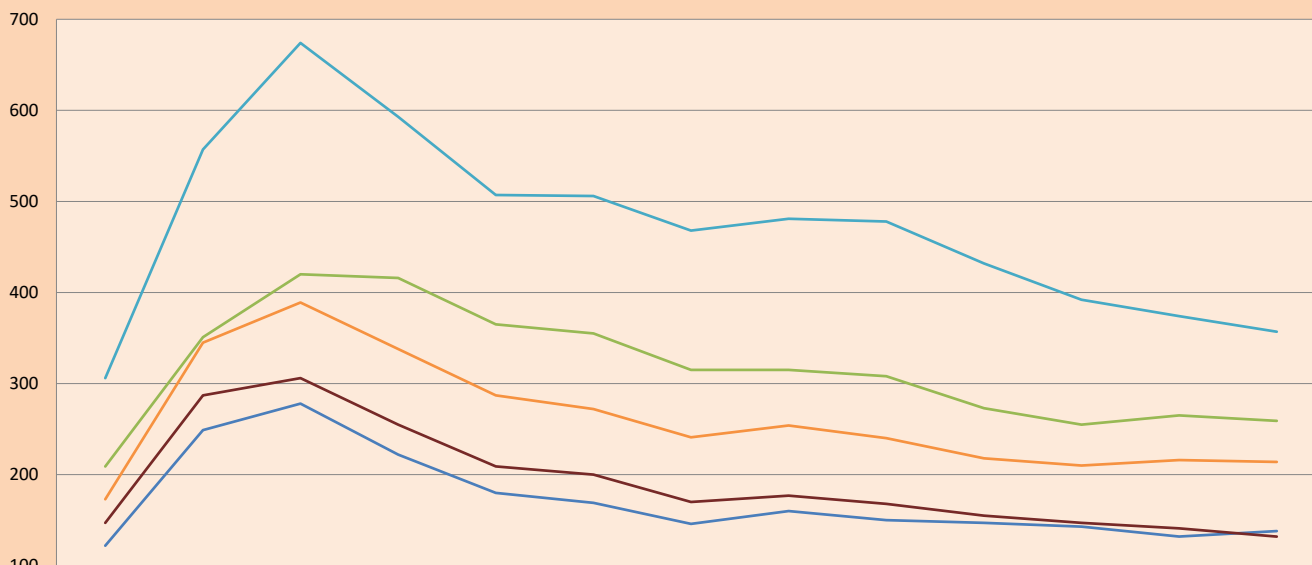
Moody's	S&P	Fitch		
Aaa	AAA	AAA	Prime	
Aa1	AA+	AA+	High credit quality	
Aa2	AA	AA		
Aa3	AA-	AA-		
A1	A+	A+	Medium-high grade, with low credit risk	
A2	A	A		
A3	A-	A-		
Baa1	BBB+	BBB+	Moderate Credit Risk	
Baa2	BBB	BBB		
Baa3	BBB-	BBB-		
Ba1	BB+	BB+	It has speculative elements and it is subject to substantial credit risk	
Ba2	BB	BB		
Ba3	BB-	BB-		
B1	B+	B+	It is considered speculative and it has high credit risk	
B2	B	B		
B3	B-	B-		
Caa1	CCC+	CCC	Bad credit conditions and it is subject to high credit risk	
Caa2	CCC			
Caa3	CCC-			
Ca	C	DDD	Very close to default or in default	
C	D			DD
				D

Source: Bloomberg

Latin America Credit Rating			
Clasificadora de riesgo			
Country	Moody's	Fitch	S&P
Peru	A3	BBB+	BBB+
México	Ba2	BB-	BB-
Venezuela	C	WD	SD
Brazil	Ba2	BB-	BB-
Colombia	Baa2	BBB-	BB+
Chile	A1	A-	A
Argentine	Ca	WD	CCC+
Panama	Baa2	BBB-	BBB

Source: Bloomberg

LATAM Country Risk (bps)



	Feb-20	Mar-20	Abr-20	May-20	Jun-20	Jul-20	Ago-20	Set-20	Oct-20	Nov-20	Dic-20	Ene-21	Feb-21
Perú	122	249	278	222	180	169	146	160	150	147	143	132	138
Brasil	209	351	420	416	365	355	315	315	308	273	255	265	259
México	306	557	674	593	507	506	468	481	478	432	392	374	357
Colombia	173	345	389	338	287	272	241	254	240	218	210	216	214
Chile	147	287	306	255	209	200	170	177	168	155	147	141	132

Source: BCRP

Capital Market Laboratory Coordinator: Economist Bruno Bellido
Collaboration: María Camarena, Alonso García, Adrian Paredes y Jairo Valverde
email: pulsobursatil@ulima.edu.pe
facebook: www.facebook.com/pulsobursatil.ul