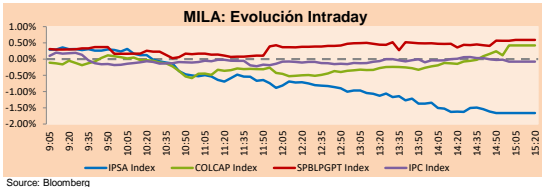


MILA

Lima, June 25, 2021

Main Indexes	Close	1 D	5 D	1 M	YTD	Cap. Burs. (US\$ bill)
▼ IPSA (Chile)	4,349.51	-1.62%	0.44%	2.13%	4.12%	120.82
▼ IGPA (Chile)	21,845.32	-1.51%	0.48%	1.92%	3.99%	144.14
▲ COLSC (Colombia)	985.31	1.52%	1.77%	1.31%	-6.96%	4.73
▲ COLCAP (Colombia)	1,284.20	0.42%	2.14%	6.43%	-10.69%	78.93
▲ S&P/BVL (Perú)*	18,969.96	0.59%	2.12%	-9.74%	-8.90%	91.53
▲ S&P/BVL SEL (Perú)	500.98	0.45%	2.78%	-9.25%	-9.15%	82.12
▲ S&P/BVL LIMA 25	24,118.24	0.84%	1.31%	-10.83%	-4.29%	90.76
▼ IPC (México)	50,549.86	-0.02%	0.46%	1.02%	14.71%	310.26
▼ S&P MILA 40	487.82	-0.18%	3.57%	-0.85%	-8.76%	6,150.66

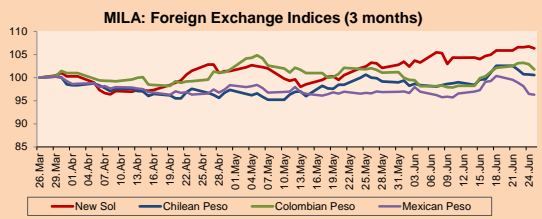
*Legend: Variation 1D: 1 day; 5D: 5 days; 1M: 1 Month; YTD: Var% 12/31/20 to date



Source: Bloomberg

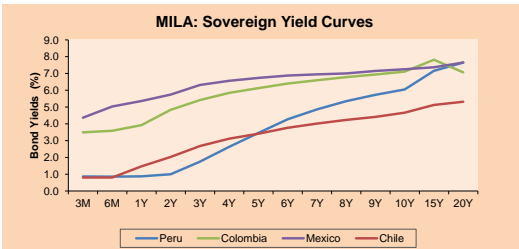
Currency	Price	1D*	5D*	30 D*	YTD*
▼ Sol (PEN)	3,9696	-0.39%	0.44%	3.00%	9.72%
▼ Chilean Peso (CLP)	733.90	-0.09%	-1.94%	0.57%	3.11%
▼ Colombian Peso (COP)	3,731.85	-1.13%	-0.36%	-0.30%	8.81%
▼ Mexican Peso (MXN)	19.82	-0.18%	-0.40%	-0.29%	-0.45%

*Legend: Variation 1D: 1 day; 5D: 5 days; 1M: 1 Month; YTD: Var% 12/31/20 to date



Base: 26/03/21=100
Source: Bloomberg

Fixed Income	Currency	Price	Bid Yield (%)	Ask Yield (%)	Duration
PERU 7.35 07/21/25	USD	122.808	1.60	1.47	3.53
PERU 4.125 08/25/27	USD	111.519	2.16	2.08	5.47
PERU 8.75 11/21/33	USD	156.23	3.26	3.17	8.70
PERU 6.55 03/14/37	USD	136.674	3.53	3.46	10.31
PERU 5.625 11/18/2050	USD	135.626	3.66	3.62	16.60
CHILE 2.25 10/30/22	USD	102.467	0.57	0.23	1.32
CHILE 3.125 01/21/26	USD	108.378	1.29	1.18	4.25
CHILE 3.625 10/30/42	USD	105.894	3.27	3.21	15.32
COLOM 11.85 03/09/28	USD	157.609	2.63	2.30	5.08
COLOM 10.375 01/28/33	USD	149.431	4.88	4.66	7.54
COLOM 7.375 09/18/37	USD	131.026	4.67	4.59	10.33
COLOM 6.125 01/18/41	USD	118.116	4.72	4.67	11.98
MEX 4 10/02/23	USD	118.116	4.724	4.672	11.98
MEX5.55 01/45	USD	120.526	4.20	4.15	14.03



Source: Bloomberg

Equity	Exchange	Currency	Price	▲ %
Largest gains				
FERREYCORP SAA	Peru	PEN	1.41	2.92
SOUTHERN COPPER	Peru	USD	65.11	2.70
GRUPO ARGOS SA	Colombia	COP	10,800.00	2.27
INRETAIL PERU CO	Peru	USD	35.55	1.98
GRUPO AVAL SA-PF	Colombia	COP	1,119.00	1.82
Per Turnover	Exchange	Amount (US\$)		
WALMART DE MEXIC	Mexico	56,745,343		
GRUPO MEXICO-B	Mexico	41,254,819		
GRUPO F BANORT-O	Mexico	39,750,306		
CEMEX SAB-CPO	Mexico	27,005,039		
ENEL AMERICAS SA	Chile	18,669,737		

Largest losses	Exchange	Currency	Price	▼ %
PARQUE ARAUCO	Chile	CLP	1,030.00	-3.47
BANCO CRED INVER	Chile	CLP	31,300.00	-3.37
COLBUN SA	Chile	CLP	106.00	-3.20
CENCOSUD SA	Chile	CLP	1,462.00	-3.18
CMPC	Chile	CLP	1,770.00	-3.01
Per Volume	Exchange	Volume		
ITAU CORPBANCA	Chile	1,100,349,532		
BANCO SANTANDER	Chile	408,331,919		
BANCO DE CHILE	Chile	239,838,412		
ENEL CHILE SA	Chile	145,973,668		
ENEL AMERICAS SA	Chile	125,699,986		

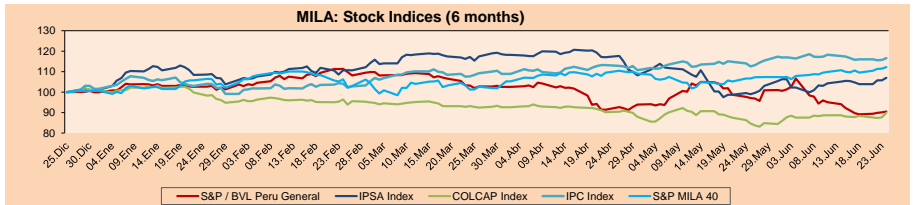
MILA

Peru: The General Index of BVL ended today's session with a positive result of +0.59%. The index maintains a negative annual cumulative trend of -8.90% in local currency, while the dollar-adjusted performance amounted to -16.96%. Then, the S&P / BVL Peru SEL varied by +0.45% while the S&P / BVL LIMA 25 by +0.84%. The spot PEN reached S / 3.9696. Headline: Ruling that declared the acquisition of Epsa by El Comercio null and void lacks legal grounds

Chile: The IPSA index ended the day with a positive return of -1.62%. The sectors that lost the most during the day were Non-Basic Consumer Products (-2.96%) and Energy (-2.52%). The most performing stocks were Parque Arauco (-3.47%) and Banco de Crédito e Inversiones (-3.37%). Headline: Beltrán de Ramón will be the new general manager of the Central Bank

Colombia: The COLCAP index closed today with a positive return of +0.42%. The most benefited sectors of the day were Communication services (+4.08%) and Materials (+1.27%). The best performing stocks were Empresa de Telecomunicaciones (4.08%) and Inversiones Argos SA (+2.27%). Headline: Guajira, San Andres and Cesar, where the economy plummeted the most in 2020

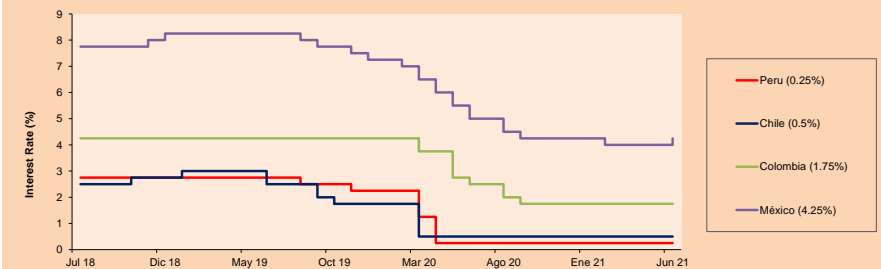
Mexico: The IPC index closed the day with a negative return of -0.02%. The worst performing sectors of the day were Financials (-0.59%) and Industrials (+0.44%). The best performing stocks were Regional SAB de CV (+2.90%) and Alfa SAB de CV (+1.41%). Headline: Banxico surprises and raises interest rate to 4% of a point



Base: 28/12/20=100
Source: Bloomberg

ETFs	Curr.	Close	1D	5D	30 D	YTD	Exchange
▲ iShares MSCI All Peru Caped Index Fund	USD	28.65	0.74%	0.88%	-8.90%	-17.39%	NYSE Arca
▲ iShares MSCI All Chile Caped Index Fund	USD	29.21	-1.42%	3.58%	4.43%	-3.31%	Cboe BZX
▲ Global X MSCI Colombia	USD	10.22	0.74%	3.97%	6.35%	-10.04%	NYSE Arca
▲ iShares MSCI Mexico Capped	USD	48.56	0.50%	3.72%	2.49%	12.96%	NYSE Arca
▲ iShares MSCI Emerging Markets	USD	55.5	0.84%	2.34%	1.62%	7.41%	NYSE Arca
▲ Vanguard FTSE Emerging Markets	USD	54.56	0.81%	1.68%	1.98%	8.88%	NYSE Arca
▲ iShares Core MSCI Emerging Markets	USD	67.37	0.72%	2.35%	1.77%	8.59%	NYSE Arca
▲ iShares JP Moran Emerging Markets Bonds	USD	64.36	0.42%	1.16%	-0.36%	5.37%	Cboe BZX
▲ Morgan Stanley Emerging Markets Domestic	USD	6.16	0.33%	0.00%	-1.28%	-2.07%	New York

MILA: Policy Rate



Source: Bloomberg

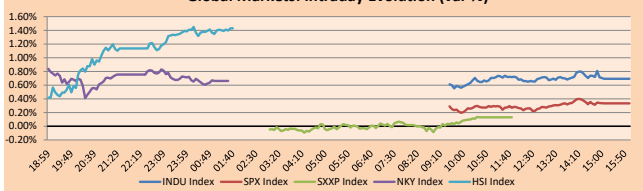
Capital Market Laboratory Coordinator: Economist Bruno Bellido
Collaboration: María Camarena, Alonso García, Adrian Paredes y Jairo Valverde
email: pulsobursatil@ulima.edu.pe
facebook: www.facebook.com/pulsobursatil.ul

WORLD

Main Indices	Close	1 D*	5 D*	1 M*	YTD*	Market Cap. (US\$ Mill.)
▲ Dow Jones (USA)	34,433.84	0.69%	3.44%	-0.28%	12.51%	10,380,802
▲ Standard & Poor's 500 (EEUU)	4,280.70	0.33%	2.74%	1.82%	13.97%	37,820,185
▼ NASDAQ Composite (USA)	14,360.39	-0.06%	2.35%	4.45%	11.42%	24,032,380
▲ Stoxx EUROPE 600 (Europe)	457.63	0.13%	1.23%	1.93%	14.69%	10,664,942
▲ DAX (Germany)	15,607.97	0.12%	1.04%	0.57%	13.77%	1,173,934
▲ FTSE 100 (United Kingdom)	7,136.07	0.37%	1.69%	1.62%	10.46%	1,487,484
▲ CAC 40 (France)	6,622.87	-0.12%	0.82%	2.14%	19.30%	1,835,870
▲ IBEX 35 (Spain)	9,095.00	0.23%	0.71%	-1.40%	12.65%	511,662
▲ MSCI AC Asia Pacific Index	209.27	0.98%	0.87%	0.51%	4.67%	27,133,959
▲ HANG SENG (Hong Kong)	29,288.22	1.40%	1.69%	0.56%	7.55%	4,520,490
▲ SHANGHAI SE Comp. (China)	3,607.56	1.15%	2.34%	0.19%	3.87%	6,989,099
▲ NIKKEI 225 (Japan)	29,068.18	0.66%	0.35%	-0.23%	5.91%	3,960,762
▲ S&P/ASX 200 (Australia)	7,308.05	0.45%	-0.83%	1.79%	10.94%	1,776,462
▼ KOSPI (South Korea)	3,302.84	-0.02%	0.46%	3.58%	14.94%	1,970,704

*Legend: Variation 1D: 1 Day; 5D: 5 Days; 1M: 1 Month; YTD: Var. %: 12/31/20 to date

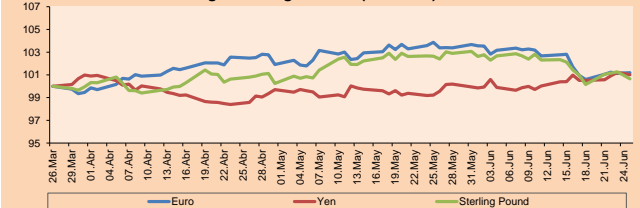
Global Markets: Intraday Evolution (var %)



Currency	Price	1 D*	5 D*	1 M*	YTD*
▲ Euro	1.1935	0.03%	0.60%	-2.11%	-2.30%
▲ Yen	110.7500	-0.11%	0.49%	1.47%	7.26%
▼ Sterling Pound	1.3879	-0.31%	0.59%	-1.70%	1.53%
▼ Yuan	6.4562	-0.24%	0.05%	1.02%	-1.09%
▼ Hong Kong Dollar	7.7614	-0.02%	-0.02%	-0.01%	0.11%
▲ Brazilian Real	4.9343	0.40%	-3.06%	-7.11%	-5.08%
▲ Argentine Peso	95.6053	0.05%	0.24%	1.19%	13.62%

*Legend: Variation 1D: 1 Day; 5D: 5 Days; 1M: 1 Month; YTD: Var. %: 12/31/20 to date

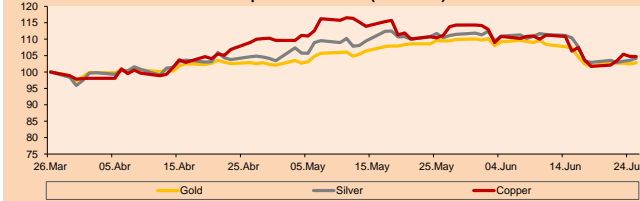
Foreign Exchange Indices (3 months)



Commodities	Close	1 D*	5 D*	1 M*	YTD*
▲ Oro (US\$ Oz. T) (LME)	1,781.44	0.35%	0.98%	-6.08%	-6.16%
▲ Plata (US\$ Oz. T) (LME)	26.10	0.60%	1.22%	-5.71%	-1.14%
▼ Cobre (US\$ TM) (LME)	9,388.40	-0.04%	2.95%	-5.75%	21.16%
▼ Zinc (US\$ TM) (LME)	2,892.25	-0.33%	2.98%	-1.93%	5.97%
▲ Petróleo WTI (US\$ Barril) (NYM)	74.05	1.02%	3.87%	12.27%	53.09%
▲ Estano (US\$ TM) (LME)	32,419.00	0.26%	3.36%	4.49%	57.80%
▲ Plomo (US\$ TM) (LME)	2,213.75	0.22%	3.19%	1.96%	12.05%
▲ Azúcar #11 (US\$ Libra) (NYB-ICE)	17.31	0.41%	3.90%	2.24%	23.29%
▲ Café (US\$ TM) (NYB-ICE)	2,360.00	1.54%	0.34%	-3.21%	-5.03%
▲ Café Arábica (US\$ TM) (NYB-ICE)	157.80	2.87%	3.85%	0.10%	18.38%

*Legend: Variación 1D: 1 Día; 5D: 5 Días; 1M: 1 Mes; YTD: Var. %: 31/12/20 a la fecha

Principal Metals Index (3 months)



Equity

Germany (Stocks from DAX Index)				Largest gains				Largest losses						
	Curr.	Price	▲ %	Exchange		Curr.	Price	▼ %	Exchange		Curr.	Price	▼ %	Exchange
ENR GY	EUR	25.37	-0.55	Xetra	DHER GY	EUR	108.45	-0.28	Xetra					
IFX GY	EUR	33.075	0.06	Xetra	BAYN GY	EUR	51.79	0.96	Xetra					
SIE GY	EUR	136.92	1.24	Xetra	EOAN GY	EUR	9.839	-1.13	Xetra					
VOW3 GY	EUR	215.95	-1.33	Xetra	BAS GY	EUR	66.05	0.67	Xetra					

Europe (Stocks from STOXX EUROPE 600)				Largest gains				Largest losses						
	Curr.	Price	▲ %	Exchange		Curr.	Price	▼ %	Exchange		Curr.	Price	▼ %	Exchange
ROCKB DC	DKK	3041	-0.72	Copenhagen	NG/ LN	Gbp	923.2	-0.08	Londres					
ELUXB SS	SEK			Stockholm	EOAN GY	EUR	9.839	-1.13	Xetra					
AMP IM	EUR	41.27	0.10	Borsa Italiana	INPST NA	EUR	15.658	3.68	EN Amsterdam					
TRN IM	EUR	6.284	-0.57	Borsa Italiana	SAP FF	EUR	124.48	-1.49	EN Paris					

Global Overview:

United States:

The main US indexes closed the day with mixed returns, due to weaker-than-expected inflation data, which alleviates concerns about the possible reduction of the stimulus by the FED. In this way, the S&P 500 finished higher, driven by Nike + 15.5% after the shoe manufacturer forecast fiscal sales for this whole year. Likewise, Bank of America + 1.9% and Wells Fargo + 2.7%, recovered after the FED announced that the large banks passed the stress test, therefore they will no longer have more restrictions related to the pandemic. On the other hand, the Senate's bipartisan agreement on infrastructure spending positively impacts the S&P 500, outperforming the Nasdaq. The latest personal consumption expenditure data showed that core inflation rose below expectations. Finally, in relation to shares, FedEx Corp fell by 3.6%, after the company did not meet its sales forecast for 2022. On the other hand, CarMax Inc rose by 6.7%, thanks to the incentive to buy of personal cars due to the COVID-19 pandemic seeking to avoid public. Thus, DOW JONES + 0.69%; S&P 500 + 0.33%; NASDAQ -0.06%.

Europe:

European markets ended stocks with mixed results as a result of US inflationary results and the Fed's announcement that it will not raise rates. This was reinforced by a rise in the price of crude. The pan-European index closed with positive results thanks to the FED statements and presented gains in the Finance + 0.51% and Health + 0.37% sectors. The British market closed with gains driven by the increase in commodities and is reflected in the sectors with more gains that are materials + 1.14% and Energy 0.74%. Meanwhile, the French market closed with negative returns due to a feeling of weakness with respect to the monetary policy of the eurozone compared to the American one. This was reinforced by losses in the Food, Public Services and Finance sectors. Finally, the German market closed with positive returns also driven by American optimism and gains within the Healthcare + 0.83%, Non-Basic Consumer Products + 0.82% and Industrial + 0.30% sectors. Thus, the STOXX 600 +0.14%,CAC40 -0.12%, FTSE 100 + 0.37%, DAX + 0.12% closed with mixed returns.

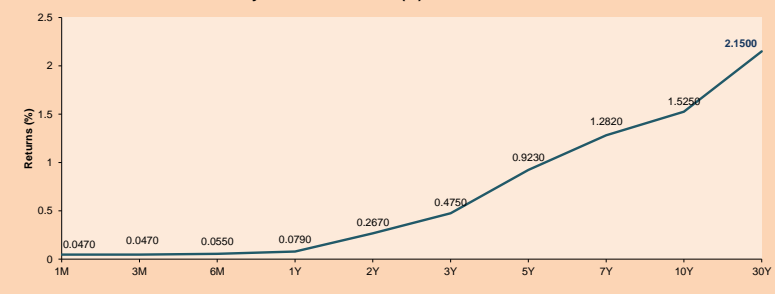
Asia:

Asian main indices closed the last day of the week higher after President Joe Biden adopted an infrastructure deal raising hopes for economic recovery. Hong Kong stocks ended with gains driven by the technology 2.4% and materials 3.3% sectors following increased investment from the mainland through Stock Connect. Similarly, Japan's NIKKEI ended the day with gains; however, these were capped by unclear recovery prospects. In addition, expectations of an increase in COVID -19 cases due to the presence of the Olympics is worrying investors. In individual stocks Panasonic +4.93% after it was shown to have sold its entire stake to TESLA last fiscal year. Finally, Australia's S&P/ASX closed with positive returns; however, the week's gains were capped by an increase in cases in the country's most populous state New South Wales. Thus, NIKKEI +0.66%; HANG SENG +1.40%; CSI 300 +1.63%; SHANGHAI COMPOSITE +1.15%; KOSPI +0.51%; S&P/ASX 200 +0.45% ended with positive returns.

ETFs

	Curr.	Close	1D	5D	30 D	YTD	Exchange
SPDR S&P 500 ETF TRUST	USD	426.61	0.36%	2.82%	1.80%	14.10%	NYSE Arca
ISHARES MSCI EMERGING MARKET	USD	55.50	0.84%	2.34%	1.82%	7.41%	NYSE Arca
ISHARES IBOXX HIGH YLD CORP	USD	87.93	0.10%	0.57%	0.78%	0.72%	NYSE Arca
FINANCIAL SELECT SECTOR SPDR	USD	36.93	1.21%	4.83%	-1.49%	25.27%	NYSE Arca
VANECK GOLD MINERS	USD	34.36	-0.23%	0.67%	-12.92%	-4.61%	NYSE Arca
ISHARES RUSSELL 2000 ETF	USD	232.28	0.17%	4.57%	-4.00%	18.47%	NYSE Arca
SPDR GOLD SHARES	USD	166.59	0.33%	1.01%	-6.22%	-6.60%	NYSE Arca
ISHARES 20+ YEAR TREASURY BO	USD	142.01	-1.04%	-2.55%	2.00%	-9.97%	NASDAQ GM
INVESCO QQQ TRUST SERIES 1	USD	349.46	-0.12%	1.99%	4.59%	11.39%	NASDAQ GM
ISHARES BIOTECHNOLOGY ETF	USD	163.13	0.84%	2.75%	8.33%	7.68%	NASDAQ GM
ENERGY SELECT SECTOR SPDR	USD	55.34	0.53%	5.63%	6.28%	46.02%	NYSE Arca
PROSHARES ULTRA VIX ST FUTUR	USD	27.54	-2.38%	-23.27%	-27.75%	-74.14%	Close BZX
UNITED STATES OIL FUND LP	USD	50.25	0.82%	3.91%	11.17%	52.23%	NYSE Arca
ISHARES MSCI BRAZIL ETF	USD	41.04	-2.19%	2.27%	8.83%	10.71%	NYSE Arca
SPDR S&P OIL & GAS EXP & PR	USD	99.75	1.19%	9.60%	13.78%	70.51%	NYSE Arca
UTILITIES SELECT SECTOR SPDR	USD	63.98	1.07%	-0.19%	-1.95%	2.04%	NYSE Arca
ISHARES US REAL ESTATE ETF	USD	103.23	0.85%	1.79%	3.40%	20.53%	NYSE Arca
SPDR S&P BIOTECH ETF	USD	138.68	1.01%	3.82%	9.23%	-1.49%	NYSE Arca
ISHARES IBOXX INVESTMENT GRA	USD	133.48	-0.26%	-0.64%	1.12%	-3.37%	NYSE Arca
ISHARES JP MORGAN USD EMERGI	USD	112.13	-0.17%	-0.12%	0.26%	-3.26%	NASDAQ GM
REAL ESTATE SELECT SECT SPDR	USD	44.69	0.72%	0.81%	3.88%	22.24%	NYSE Arca
ISHARES CHINA LARGE-CAP ETF	USD	47.11	1.90%	3.40%	1.46%	1.46%	NYSE Arca
CONSUMER STAPLES SPDR	USD	69.68	0.77%	1.28%	-2.00%	3.31%	NYSE Arca
VANECK JR GOLD MINERS	USD	47.43	-0.92%	-0.63%	-12.46%	-12.56%	NYSE Arca
SPDR BARRI HIGH YIELD BND	USD	109.85	0.10%	0.54%	0.82%	0.84%	NYSE Arca
VANGUARD REAL ESTATE ETF	USD	102.91	0.69%	1.11%	3.42%	21.17%	NYSE Arca
GRAYSCALE BITCOIN TRUST BTC	USD	27.68	-6.52%	-7.11%	-13.63%	-13.50%	OTC US

USA Treasury Bonds Yield Curve (%)



Source: Bloomberg

Capital Market Laboratory Coordinator: Economist Bruno Bellido
Collaboration: Maria Camarena, Alonso Garcia, Adrian Paredes y Jairo Valverde
email: pulsobursatil@ulima.edu.pe
facebook: www.facebook.com/pulsobursatil.u

LIMA

Stocks

Ticker	Currency	Price	1D*	5D*	30D*	YTD*	Frequency	Volume (US\$)	Beta	Dividend Yield (%)	Price Earning	Market Cap. (M US\$)	Economic Sector*	Index Weight
▲ ALICORC1 PE**	S/.	6.10	1.52%	1.77%	1.31%	-6.96%	100.00%	28,058	1.02	4.10	11.51	1,311.26	Industrial	3.53%
▲ ATACOCB1 PE**	S/.	0.10	0.00%	-2.00%	-11.71%	-28.99%	65.00%	2,592	1.18	0.00	-	23.33	Mining	1.02%
- BACKUS1 PE**	S/.	16.90	0.00%	4.51%	-3.43%	-16.13%	95.00%	2,282	0.75	7.61	8.15	6,249.82	Industrial	0.82%
▲ BAP PE**	US\$	119.12	0.60%	2.87%	-8.23%	-25.83%	100.00%	1,780,012	1.15	0.00	-	11,242.82	Diverse	5.82%
- BVN PE**	US\$	9.31	0.00%	-0.64%	-16.88%	-22.42%	100.00%	251	1.11	0.00	-	2,561.75	Mining	5.88%
- CASAGRC1 PE**	S/.	3.60	0.00%	-10.00%	-29.41%	-24.21%	95.00%	782	1.25	0.00	2.66	76.39	Agricultural	1.31%
- BBVAC1 PE**	S/.	1.85	0.00%	0.76%	-1.80%	-11.74%	100.00%	3,809	1.10	2.36	27.34	3,149.73	Finance	2.85%
▲ CORARE1 PE**	S/.	0.99	8.79%	4.21%	-5.71%	11.24%	100.00%	146,254	1.35	20.55	3.17	344.45	Industrial	1.72%
▲ CPACASC1 PE**	S/.	5.04	2.23%	-16.69%	-4.36%	-4.91%	100.00%	121,864	0.71	15.67	36.00	591.94	Industrial	2.38%
▲ CVERDEC1 PE**	US\$	16.00	1.27%	4.58%	-10.61%	-23.52%	100.00%	230,688	1.45	3.57	9.16	5,600.90	Mining	5.25%
▲ ENGEPEC1 PE**	S/.	1.99	0.51%	-1.00%	-5.24%	-0.50%	80.00%	131,284	0.69	9.92	12.16	1,423.09	Public Services	1.44%
▼ ENDISPC1**	S/.	3.85	-1.28%	-1.28%	-14.44%	-28.70%	70.00%	4,795	0.78	4.43	8.66	619.32	Public Services	0.98%
▲ FERREYC1 PE**	S/.	1.41	2.92%	-1.40%	-18.97%	-18.97%	100.00%	2,314,662	1.11	12.92	6.23	346.56	Diverse	4.90%
▲ AENZAC1 PE**	S/.	1.30	3.17%	0.78%	15.04%	-25.29%	100.00%	24,562	0.73	0.00	-	285.54	Diverse	4.05%
▼ IFS PE**	US\$	25.25	-2.32%	-0.59%	-4.32%	-18.39%	100.00%	1,312,703	1.18	3.05	15.15	2,915.05	Diverse	7.22%
▲ INRETC1 PE**	US\$	35.55	1.98%	3.64%	-3.92%	-9.31%	100.00%	374,042	0.83	1.92	77.53	3,654.80	Diverse	5.28%
▲ LUSURC1 PE**	S/.	10.95	0.46%	-0.45%	-4.78%	-57.06%	90.00%	24,338	0.73	10.18	11.86	1,343.24	Public Services	1.81%
- MINSUR1 PE**	S/.	2.45	-1.21%	-3.54%	-13.73%	32.43%	100.00%	46,351	0.97	13.64	4.68	1,779.36	Mining	3.09%
▼ PML PE**	US\$	0.10	0.00%	3.19%	-19.17%	-8.49%	85.00%	4,850	1.42	0.00	-	25.64	Mining	2.12%
▲ RELAPAC1 PE**	S/.	0.14	4.38%	15.32%	27.68%	107.25%	100.00%	114,238	1.14	0.00	3.65	299.69	Industrial	2.12%
▲ SCCO PE**	US\$	65.11	2.70%	9.14%	-3.67%	-1.20%	100.00%	13,022	0.97	3.38	22.62	50,334.80	Mining	2.14%
▲ SIDERC1 PE**	S/.	0.93	1.09%	3.33%	-4.12%	9.41%	100.00%	57,148	0.94	24.14	4.65	208.02	Industrial	1.43%
▼ TV PE**	US\$	0.18	-1.13%	2.94%	-10.26%	19.05%	100.00%	6,300	1.24	0.00	-	173.09	Mining	2.93%
▲ UNACEMC1 PE**	S/.	1.19	1.71%	-3.25%	-16.78%	-23.23%	100.00%	50,397	1.15	2.18	9.40	545.04	Industrial	3.00%
- VOLCABC1 PE**	S/.	0.47	0.00%	0.00%	-28.79%	-9.62%	100.00%	156,521	1.59	0.00	-	482.67	Mining	5.90%
- NEXAPEC1 PE**	S/.	2.90	0.00%	-5.23%	-7.64%	2.47%	75.00%	39,471	1.12	0.00	21.77	966.60	Mining	1.56%

Quantity of shares: 26
Source: Bloomberg, Económática
* Bloomberg Industry Classification System
** PER is used in the stock market and original currency of the instrument
*Legend: Variation 1D: 1 Day; 5D: 5 Days, 1M: 1 Month; YTD: Var.% 12/31/20 to date

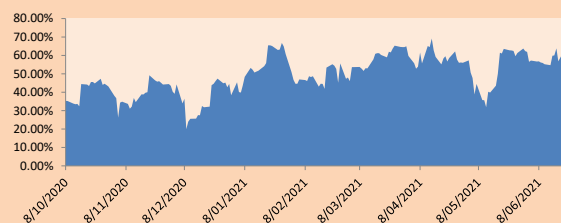
Sectorial Indices

	Close	1D*	5D*	30D*	YTD*	Beta
▲ S&P/BVLMining	401.36	1.58%	5.99%	-5.83%	2.93%	0.97
▲ S&P/BVLConsumer	1,029.43	0.94%	2.90%	-0.39%	-5.44%	0.80
▲ S&P/BVLIndustrials	173.12	2.43%	-1.49%	-5.04%	-9.15%	0.87
▲ S&P/BVLFinancials	858.41	0.22%	3.16%	-4.64%	-16.97%	1.10
▲ S&P/BVLConstruction	191.65	2.21%	-1.89%	0.40%	-8.35%	0.79
▼ S&P/BVLPublicSvcs	518.06	-0.03%	-1.27%	-5.85%	-15.64%	0.43
▼ S&P/BVLElectricUtil	505.75	-0.03%	-1.28%	-5.85%	-15.64%	0.43

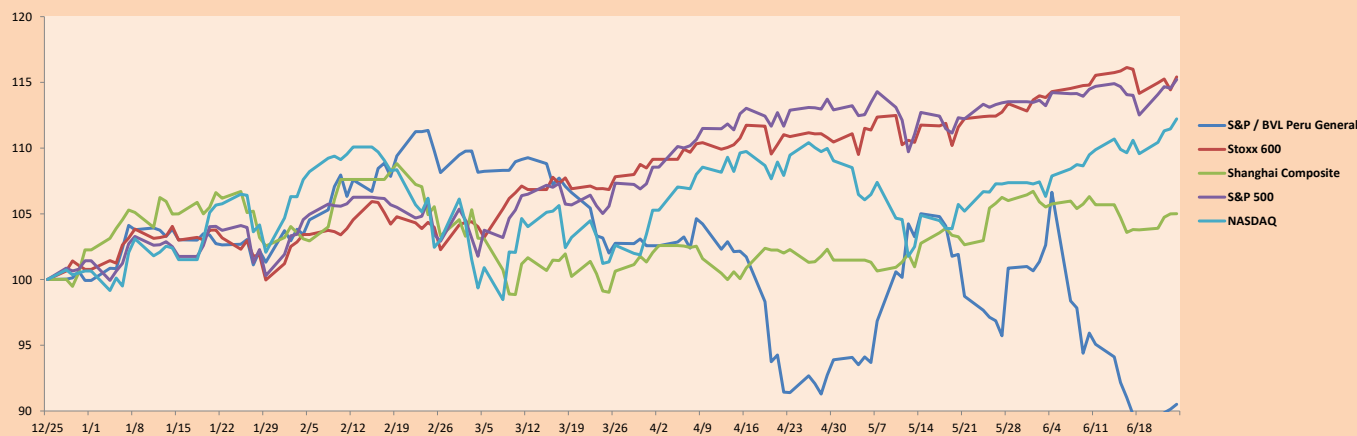
S&P/BVLConstructionTRPEN

*Legend: Variation 1D: 1 Day; 5D: 5 Days, 1M: 1 Month; YTD: Var.% 12/31/20 to date

Correlation Graph of Returns of Mining Index against Metallic Index of London (3 months)



Indices (6 months)



Base: 25/12/20=100
Source: Bloomberg

Capital Market Laboratory Coordinator: Economist Bruno Bellido
Collaboration: María Camarena, Alonso García, Adrian Paredes y Jairo Valverde
email: pulsobursatil@ulima.edu.pe
facebook: www.facebook.com/pulsobursatil.ul

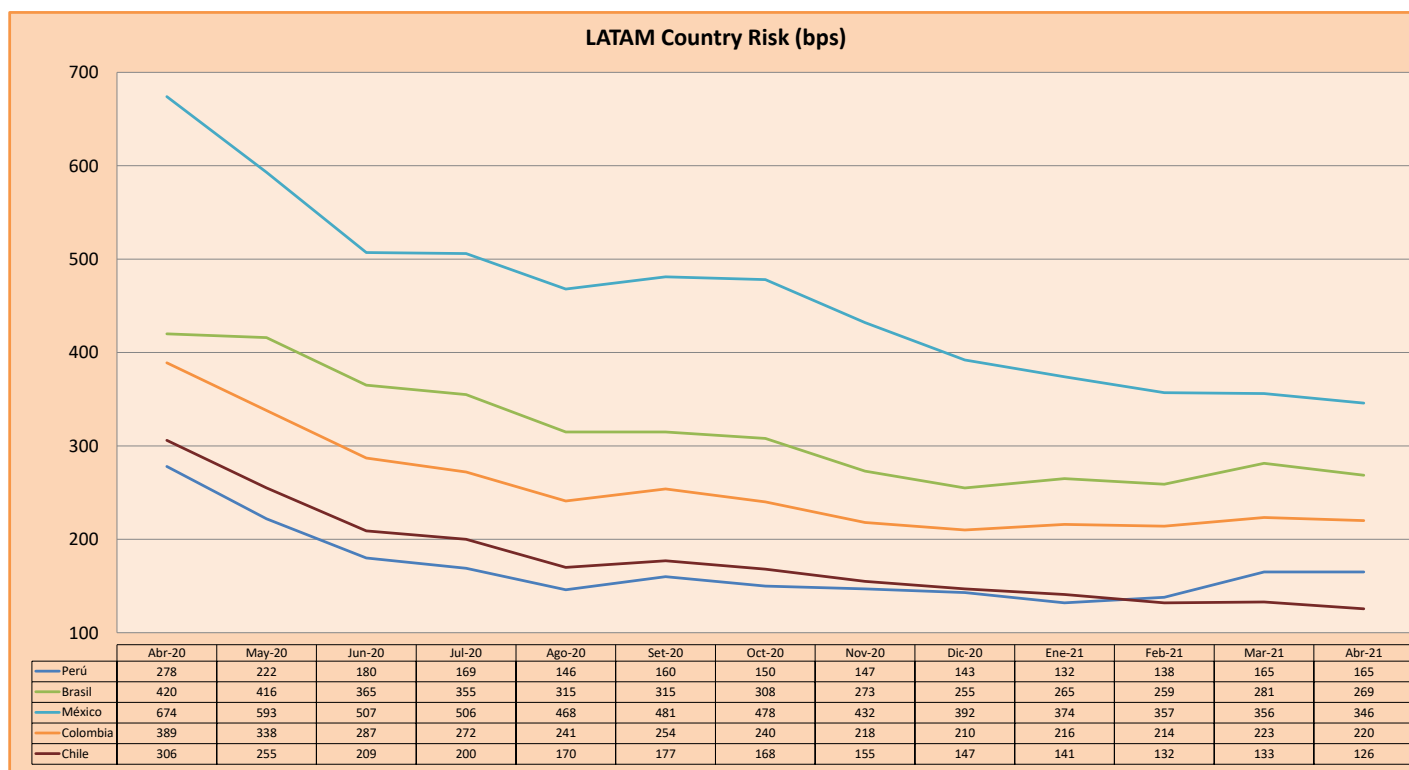
SOVEREIGN RATING

RISK RATINGS			
Moody's	S&P	Fitch	
Aaa	AAA	AAA	Prime
Aa1	AA+	AA+	High credit quality
Aa2	AA	AA	
Aa3	AA-	AA-	
A1	A+	A+	Medium-high grade, with low credit risk
A2	A	A	
A3	A-	A-	
Baa1	BBB+	BBB+	Moderate Credit Risk
Baa2	BBB	BBB	
Baa3	BBB-	BBB-	
Ba1	BB+	BB+	It has speculative elements and it is subject to substantial credit risk
Ba2	BB	BB	
Ba3	BB-	BB-	
B1	B+	B+	It is considered speculative and it has high credit risk
B2	B	B	
B3	B-	B-	
Caa1	CCC+		Bad credit conditions and it is subject to high credit risk
Caa2	CCC		
Caa3	CCC-	CCC	
Ca	C		Very close to default or in default
		DDD	
C	D	DD D	

Source: Bloomberg

Latin America Credit Rating			
Clasificadora de riesgo			
Country	Moody's	Fitch	S&P
Peru	A3	BBB+	BBB+
México	Ba2	BB-	BB-
Venezuela	C	WD	SD
Brazil	Ba2	BB-	BB-
Colombia	Baa2	BBB-	BB+
Chile	A1	A-	A
Argentine	Ca	WD	CCC+
Panama	Baa2	BBB-	BBB

Source: Bloomberg



Source: BCRP

Capital Market Laboratory Coordinator: Economist Bruno Bellido
Collaboration: Maria Camarena, Alonso García, Adrian Paredes y Jairo Valverde
email: pulsobursatil@ulima.edu.pe
facebook: www.facebook.com/pulsobursatil.ul